



STATE OF WASHINGTON  
DEPARTMENT OF ECOLOGY

Northwest Regional Office • 3190 160th Ave SE • Bellevue, WA 98008-5452 • 425-649-7000  
711 for Washington Relay Service • Persons with a speech disability can call 877-833-6341

April 26, 2016

Mr. Eran Fields  
FH Brooklyn, LLC  
3954 Hopevale Drive  
Sherman Oaks, CA 91403

**Re: Notice of Potential Liability under the Model Toxics Control Act for the Release of Hazardous Substances at the following Hazardous Waste Site:**

- Name: **Chevron Station 90129**
- Address: 4700 Brooklyn Avenue NE Seattle, WA 98105
- County Assessor's Parcel Number 8816400985
- Facility/Site No.: 819666648
- Cleanup Site No.: 10632

Dear Mr. Fields:

Under the Model Toxics Control Act (MTCA), chapter 70.105D RCW, which governs the cleanup of hazardous waste sites in Washington State, the Department of Ecology (Ecology) may identify persons that it finds are liable for the release of hazardous substances at a site. Before making such a finding, Ecology must provide persons with notice and an opportunity to comment on the proposed finding. Any person whom Ecology finds, based on credible evidence, to be liable is known as a "potentially liable person" or "PLP".

**Proposed Finding of Liability**

Based on credible evidence, Ecology is proposing to find FH Brooklyn LLC liable under RCW 70.105D.040 for the release of hazardous substances at the **Chevron Station 90129** facility (Site). This proposed finding is based on the following evidence:

1. FH Brooklyn LLC is the current owner of property where contamination has come to be located.
2. Ground Water Sampling Report Second Quarter 2014 details following:
  - Samples were not collected from monitoring wells MW-9, 10, 11, 12, & MW-13 due to Separate-phase liquids (free product, SPL)
  - MW-3            8,900 µg/l gasoline        210 µg/l Benzene
  - MW-4            840 µg/l gasoline         53 µg/l Benzene
  - MW-16          1,300 µg/l gasoline       150 µg/l Benzene



3. A completed Remedial Investigation defining the full lateral and vertical extent of the Site has not been submitted to Ecology. Ground water and soil impacts may extend beyond the southern property boundary.

### **Opportunity to Respond to Proposed Finding of Liability**

In response to Ecology's proposed finding of liability, you may either:

1. Accept your status as a PLP without admitting liability and expedite the process through a voluntary waiver of your right to comment. This may be accomplished by signing and returning the enclosed form or by sending a letter containing similar information to Ecology;
2. Challenge your status as a PLP by submitting written comments to Ecology within thirty (30) calendar days of the date you receive this letter; or
3. Choose not to comment on your status as a PLP.

Please submit your waiver or written comments to the following address:

Dale Myers  
Toxics Cleanup Program  
Department of Ecology  
3190 160th Avenue SE  
Bellevue, WA 98008

After reviewing any comments submitted or after 30 days if no response has been received, Ecology will make a final determination regarding your status as a PLP and provide you with written notice of that determination.

### **Identification of Other Potentially Liable Persons**

Ecology may be notifying additional persons that they may be potentially liable for the release of hazardous substances at the Site.

If you are aware of any other persons who may be liable for the release of hazardous substances at the Site, Ecology encourages you to provide us with their identities and the reason you believe they are liable. Ecology also suggests you contact these other persons to discuss how you can jointly work together to most efficiently clean up the Site.

### **Responsibility and Scope of Potential Liability**

Please note that Ecology may either conduct or require PLPs to conduct remedial actions to investigate and clean up the release of hazardous substances at a site. PLPs are encouraged to initiate discussions and negotiations with Ecology and the Office of the Attorney General that may lead to an agreement on the remedial action to be conducted.

Please also note that each liable person is strictly liable, jointly and severally, for all remedial action costs and for all natural resource damages resulting from the release of hazardous substances at a site. If Ecology incurs remedial action costs in connection with the investigation or cleanup of real property and those costs are not reimbursed, then Ecology has the authority under RCW 70.105D.055 to file a lien against that real property to recover those costs.

Mr. Eran Fields  
April 26, 2016  
Page 3

### Next Steps in Cleanup Process

In response to the release of hazardous substances at the Site, Ecology intends to conduct the following actions under MTCA:

1. Conduct a Site Hazard Assessment;
2. Include FH Brooklyn LLC as a PLP in an Agreed Order to complete an Interim Action, the Remedial Investigation, Feasibility Study and Cleanup Action Plan to remediate the Site.

For a description of the process for cleaning up a hazardous waste site under MTCA, please refer to the enclosed fact sheet.

Ecology's policy is to work cooperatively with PLPs to accomplish the prompt and effective cleanup of hazardous waste sites. Please note that your cooperation in planning or conducting remedial actions at the Site is not an admission of guilt or liability.

### Contact Information

If you have any questions regarding this letter or if you would like additional information regarding the cleanup of hazardous waste sites, please call me at (425) 649-4446 or email at [dale.myers@ecy.wa.gov](mailto:dale.myers@ecy.wa.gov). Thank you for your cooperation.

Sincerely,



Dale Myers  
Toxics Cleanup Program

Enclosures: Focus: Model Toxics Control Act Cleanup Regulation: Process  
for Cleanup of Hazardous Waste Sites (Pub. No. #94-129)  
Voluntary Waiver of Right to Comment Form  
Site Vicinity Map  
Current and Heritage Chevron LUST Sites

By Certified Mail [7012 3460 0000 2587 3613]

cc: Eric Hetrick, Chevron Environmental Management Co.  
William F. Joyce, Joyce Ziker Parkinson PLLC, By Certified Mail [7012 3460 0000 2587 3576]  
Allyson Bazan, AAG







# Focus

---

## Model Toxics Control Act Cleanup Regulation: Process for Cleanup of Hazardous Waste Sites

---

In March of 1989, an innovative, citizen-mandated toxic waste cleanup law went into effect in Washington, changing the way hazardous waste sites in this state are cleaned up. Passed by voters as Initiative 97, this law is known as the Model Toxics Control Act, chapter 70.105D RCW. This fact sheet provides a brief overview of the process for the cleanup of contaminated sites under the rules Ecology adopted to implement that Act (chapter 173-340 WAC).

### How the Law Works

---

The cleanup of hazardous waste sites is complex and expensive. In an effort to avoid the confusion and delays associated with the federal Superfund program, the Model Toxics Control Act is designed to be as streamlined as possible. It sets strict cleanup standards to ensure that the quality of cleanup and protection of human health and the environment are not compromised. At the same time, the rules that guide cleanup under the Act have built-in flexibility to allow cleanups to be addressed on a site-specific basis.

The Model Toxics Control Act funds hazardous waste cleanup through a tax on the wholesale value of hazardous substances. The tax is imposed on the first in-state possessor of hazardous substances at the rate of 0.7 percent, or \$7 per \$1,000. Since its passage in 1988, the Act has guided the cleanup of thousands of hazardous waste sites that dot the Washington landscape. The Washington State Department of Ecology's Toxic Cleanup Program ensures that these sites are investigated and cleaned up.

### What Constitutes a Hazardous Waste Site?

---

Any owner or operator who has information that a hazardous substance has been released to the environment at the owner or operator's facility and may be a threat to human health or the environment must report this information to the Department of Ecology (Ecology). If an "initial investigation" by Ecology confirms further action (such as testing or cleanup) may be necessary, the facility is entered onto either Ecology's "Integrated Site Information System" database or "Leaking Underground Storage Tank" database. These are computerized databases used to track progress on all confirmed or suspected contaminated sites in Washington State. All confirmed sites that have not been already voluntarily cleaned up are ranked and placed on the state "Hazardous Sites List." Owners, operators, and other persons known to be potentially liable for the cleanup of the site will receive an "Early Notice Letter" from Ecology notifying them that their site is suspected of needing cleanup, and that it is Ecology's policy to work cooperatively with them to accomplish prompt and effective cleanup.

---

## Who is Responsible for Cleanup?

---

Any past or present relationship with a contaminated site may result in liability. Under the Model Toxics Control Act a potentially liable person can be:

- A current or past facility owner or operator.
- Anyone who arranged for disposal or treatment of hazardous substances at the site.
- Anyone who transported hazardous substances for disposal or treatment at a contaminated site, unless the facility could legally receive the hazardous materials at the time of transport.
- Anyone who sells a hazardous substance with written instructions for its use, and abiding by the instructions results in contamination.

In situations where there is more than one potentially liable person, each person is jointly and severally liable for cleanup at the site. That means each person can be held liable for the entire cost of cleanup. In cases where there is more than one potentially liable person at a site, Ecology encourages these persons to get together to negotiate how the cost of cleanup will be shared among all potentially liable persons.

Ecology must notify anyone it knows may be a “potentially liable person” and allow an opportunity for comment before making any further determination on that person’s liability. The comment period may be waived at the potentially liable person’s request or if Ecology has to conduct emergency cleanup at the site.

## Achieving Cleanups through Cooperation

---

Although Ecology has the legal authority to order a liable party to clean up, the department prefers to achieve cleanups cooperatively. Ecology believes that a non-adversarial relationship with potentially liable persons improves the prospect for prompt and efficient cleanup. The rules implementing the Model Toxics Control Act, which were developed by Ecology in consultation with the Science Advisory Board (created by the Act), and representatives from citizen, environmental and business groups, and government agencies, are designed to:

- Encourage independent cleanups initiated by potentially liable persons, thus providing for quicker cleanups with less legal complexity.
- Encourage an open process for the public, local government and liable parties to discuss cleanup options and community concerns.
- Facilitate cooperative cleanup agreements rather than Ecology-initiated orders. *Ecology can, and does, however use enforcement tools in emergencies or with recalcitrant potentially liable persons.*

## What is the Potentially Liable Person’s Role in Cleanup?

---

The Model Toxics Control Act requires potentially liable persons to assume responsibility for cleaning up contaminated sites. For this reason, Ecology does not usually conduct the actual cleanup when a potentially liable person can be identified. Rather, Ecology oversees the cleanup of sites to ensure that investigations, public involvement and actual cleanup and monitoring are done appropriately. Ecology’s costs of this oversight are required to be paid by the liable party.

When contamination is confirmed at the site, the owner or operator may decide to proceed with cleanup without Ecology assistance or approval. Such “independent cleanups” are



---

allowed under the Model Toxics Control Act under most circumstances, but must be reported to Ecology, and are done at the owner's or operator's own risk. Ecology may require additional cleanup work at these sites to bring them into compliance with the state cleanup standards. Most cleanups in Washington are done independently.

Other than local governments, potentially liable persons conducting independent cleanups do not have access to financial assistance from Ecology. Those who plan to seek contributions from other persons to help pay for cleanup costs need to be sure their cleanup is "the substantial equivalent of a department-conducted or department-supervised remedial action." Ecology has provided guidance on how to meet this requirement in WAC 173-340-545. Persons interested in pursuing a private contribution action on an independent cleanup should carefully review this guidance prior to conducting site work.

### **Working with Ecology to Achieve Cleanup**

---

Ecology and potentially liable persons often work cooperatively to reach cleanup solutions. Options for working with Ecology include formal agreements such as consent decrees and agreed orders, and seeking technical assistance through the Voluntary Cleanup Program. These mechanisms allow Ecology to take an active role in cleanup, providing help to potentially liable persons and minimizing costs by ensuring the job meets state standards the first time. This also minimizes the possibility that additional cleanup will be required in the future – providing significant assurances to investors and lenders.

Here is a summary of the most common mechanisms used by Ecology:

- **Voluntary Cleanup Program:** Many property owners choose to cleanup their sites independent of Ecology oversight. This allows many smaller or less complex sites to be cleaned up quickly without having to go through a formal process. A disadvantage to property owners is that Ecology does not approve the cleanup. This can present a problem to property owners who need state approval of the cleanup to satisfy a buyer or lender.

One option to the property owner wanting to conduct an independent cleanup yet still receive some feedback from Ecology is to request a technical consultation through Ecology's Voluntary Cleanup Program. Under this voluntary program, the property owner submits a cleanup report with a fee to cover Ecology's review costs. Based on the review, Ecology either issues a letter stating that the site needs "No Further Action" or identifies what additional work is needed. Since Ecology is not directly involved in the site cleanup work, the level of certainty in Ecology's response is less than in a consent decree or agreed order. However, many persons have found a "No Further Action" letter to be sufficient for their needs, making the Voluntary Cleanup Program a popular option.

- **Consent Decrees:** A consent decree is a formal legal agreement filed in court. The work requirements in the decree and the terms under which it must be done are negotiated and agreed to by the potentially liable person, Ecology and the state Attorney General's office. Before consent decrees can become final, they must undergo a public review and comment period that typically includes a public hearing. Consent decrees protect the potentially liable person from being sued for "contribution" by other persons that incur cleanup expenses at the site while facilitating any contribution claims against the other persons when they are responsible for part of the cleanup costs. Sites cleaned up under a consent decree are also exempt from having to obtain certain state and local permits that could delay the cleanup.

- 
- **De Minimus Consent Decree:** Landowners whose contribution to site contamination is “insignificant in amount and toxicity” may be eligible for a de minimus consent decree. In these decrees, landowner typically settle their liability by paying for some of the cleanup instead of actually conducting the cleanup work. Ecology usually accepts a de minimus settlement proposal only if the landowner is affiliated with a larger site cleanup that Ecology is currently working on.
  - **Prospective Purchaser Consent Decree:** A consent decree may also be available for a “prospective purchaser” of contaminated property. In this situation, a person who is not already liable for cleanup and wishes to purchase a cleanup site for redevelopment or reuse may apply to negotiate a prospective purchaser consent decree. The applicant must show, among other things, that they will contribute substantial new resources towards the cleanup. Cleanups that also have a substantial public benefit will receive a higher priority for prospective purchaser agreements. If the application is accepted, the requirements for cleanup are negotiated and specified in a consent decree so that the purchaser can better estimate the cost of cleanup before buying the land.
  - **Agreed Orders:** Unlike a consent decree, an agreed order is not filed in court and is not a settlement. Rather, it is a legally binding administrative order issued by Ecology and agreed to by the potentially liable person. Agreed orders are available for remedial investigations, feasibility studies, and final cleanups. An agreed order describes the site activities that must occur for Ecology to agree not to take enforcement action for that phase of work. As with consent decrees, agreed orders are subject to public review and offer the advantage of facilitating contribution claims against other persons and exempting cleanup work from obtaining certain state and local permits.

### **Ecology-Initiated Cleanup Orders**

---

Administrative orders requiring cleanup activities without an agreement with a potentially liable person are known as **enforcement orders**. These orders are usually issued to a potentially liable person when Ecology believes a cleanup solution cannot be achieved expeditiously through negotiation or if an emergency exists. If the responsible party fails to comply with an enforcement order, Ecology can clean up the site and later recover costs from the responsible person(s) at up to three times the amount spent. The state Attorney General’s Office may also seek a fine of up to \$25,000 a day for violating an order. Enforcement orders are subject to public notification.

### **Financial Assistance**

---

Each year, Ecology provides millions of dollars in grants to local governments to help pay for the cost of site cleanup. In general, such grants are available only for sites where the cleanup work is being done under an order or decree. Ecology can also provide grants to local governments to help defray the cost of replacing a public water supply well contaminated by a hazardous waste site. Grants are also available for local citizen groups and neighborhoods affected by contaminated sites to facilitate public review of the cleanup. See Chapter 173-322 WAC for additional information on grants to local governments and Chapter 173-321 WAC for additional information on public participation grants.

### **Public Involvement**

---

Public notices are required on all agreed orders, consent decrees, and enforcement orders. Public notification is also required for all Ecology-conducted remedial actions.



---

Ecology's Site Register is a widely used means of providing information about cleanup efforts to the public and is one way of assisting community involvement. The Site Register is published every two weeks to inform citizens of public meetings and comment periods, discussions or negotiations of legal agreements, and other cleanup activities. The Site Register can be accessed on the Internet at: [www.ecy.wa.gov/programs/tcp/pub\\_inv/pub\\_inv2.html](http://www.ecy.wa.gov/programs/tcp/pub_inv/pub_inv2.html).

## How Sites are Cleaned Up

---

The rules describing the cleanup process at a hazardous waste site are in chapter 173-340 WAC. The following is a general description of the steps taken during the cleanup of an average hazardous waste site. Consult the rules for the specific requirements for each step in the cleanup process.

**1. Site Discovery:** Sites where contamination is found must be reported to Ecology's Toxics Cleanup Program within 90 days of discovery, unless it involves a release of hazardous materials from an underground storage tank system. In that case, the site discovery must be reported to Ecology within 24 hours. At this point, potentially liable persons may choose to conduct independent cleanup without assistance from the department, but cleanup results must be reported to Ecology.

**2. Initial Investigation:** Ecology is required to conduct an initial investigation of the site within 90 days of receiving a site discovery report. Based on information obtained about the site, a decision must be made within 30 days to determine if the site requires additional investigation, emergency cleanup, or no further action. If further action is required under the Model Toxics Control Act, Ecology sends early notice letters to owners, operators and other potentially liable persons inviting them to work cooperatively with the department.

**4. Hazard Ranking:** The Model Toxics Control Act requires that sites be ranked according to the relative health and environmental risk each site poses. Working with the Science Advisory Board, Ecology created the Washington Ranking Method to categorize sites using data from site hazard assessments. Sites are ranked on a scale of 1 to 5. A score of 1 represents the highest level of risk and 5 the lowest. Ranked sites are placed on the state Hazardous Sites List.

**3. Site Hazard Assessment:** A site hazard assessment is conducted to confirm the presence of hazardous substances and to determine the relative risk the site poses to human health and the environment.

**5. Remedial Investigation/Feasibility Study:** A remedial investigation and feasibility study is conducted to define the extent and magnitude of contamination at the site. Potential impacts on human health and the environment and alternative cleanup technologies are also evaluated in this study. Sites being cleaned up by Ecology or by potentially liable persons under a consent decree, agreed order or enforcement order are required to provide for a 30 day public review before finalizing the report.

**6. Selection of Cleanup Action:** Using information gathered during the study, a cleanup action plan is developed. The plan identifies preferred cleanup methods and specifies cleanup standards and other requirements at the site. A draft of the plan is subject to public review and comment before it is finalized.

**7. Site Cleanup:** Actual cleanup begins when the cleanup action plan is implemented. This includes design, construction, operation and monitoring of cleanup actions. A site may be taken off the Hazardous Sites List after cleanup is completed and Ecology determines cleanup standards have been met.

---

## For More Information / Special Accommodation Needs

---

If you would like more information about the state Model Toxics Control Act, please call us toll-free at **1-800-826-7716**, or contact your regional Washington State Department of Ecology office listed below. Information about site cleanup, including a listing of ranked hazardous waste sites, is also accessible through our Internet address:

<http://www.ecy.wa.gov/programs/tcp/cleanup.html>

- **Northwest Regional Office**                                **425/649-7000**  
(Island, King, Kitsap, San Juan, Skagit, Snohomish, Whatcom Counties)
- **Southwest Regional Office**                                **360/407-6300**  
(Southwestern Washington, Olympic Peninsula, Pierce, Thurston and Mason Counties)
- **Central Regional Office**                                    **509/575-2490**  
(Benton, Chelan, Douglas, Kittitas, Klickitat, Okanogan, Yakima Counties)
- **Eastern Regional Office**                                    **509/329-3400**  
(Adams, Asotin, Columbia, Ferry, Franklin, Garfield, Grant, Lincoln, Pend Oreille, Spokane, Stevens, Walla Walla, Whitman Counties)

*If you need this publication in an alternative format, please contact the Toxics Cleanup Program at (360) 407-7170. Persons with a hearing loss can call 711 for the Washington Relay Service. Persons with a speech disability can call 877-833-6341.*

**Disclaimer Notice:** This fact sheet is intended to help the user understand the Model Toxics Control Act Cleanup Regulation, chapter 173-340 WAC. It does not establish or modify regulatory requirements.

**Procedure 500B: Attachment 7**  
**Notice of Waiver**  
Revised January 2008

---

FH BROOKLYN, LLC  
ATTN: ERAN FIELDS  
3954 HOPEVALE DRIVE  
SHERMAN OAKS, CA 91403

Pursuant to WAC 173-340-500 and WAC 173-340-520(1)(b)(i), I (NAME) \_\_\_\_\_,  
a duly authorized representative of FH BROOKLYN, LLC, do hereby waive the right to the  
thirty- (30) day notice and comment period described in WAC 173-340-500(3) and accept status  
of FH BROOKLYN, LLC as a Potentially Liable Person at the following site:

- Name: **Chevron Station 90129**
- Address: 4700 Brooklyn Avenue NE Seattle, WA 98105
- County Assessor's Parcel Number
- Facility/Site No.: 819666648
- Cleanup Site No.: 10632

By waiving this right, FH BROOKLYN, LLC makes no admission of liability.

\_\_\_\_\_  
Signature

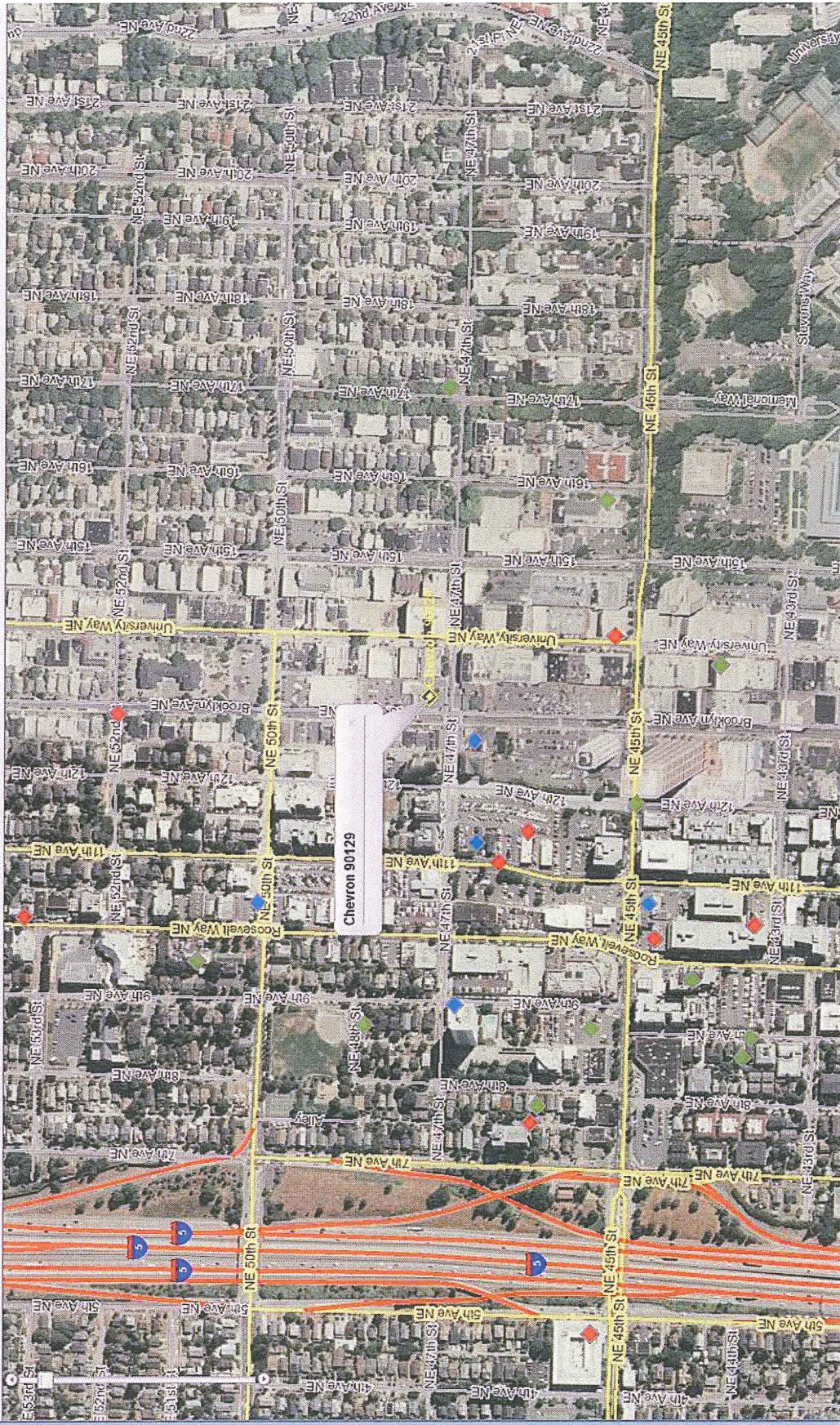
\_\_\_\_\_  
Date

Relation to the Site (that is, owner or operator)





Tools | Layers | Map Search | H



Facility Site Details	
<b>Chevron 90129</b>	
ID	81986648
Address	4700 Brooklyn Ave NE
City	Seattle
Zip Code	98105
County	King
Latitude	47.66295
Longitude	-122.31394
Alternate Names	
IEVRON 0129	
IEVRON SS 90129	
Cleanup Site Details	
Nearby Cleanup Sites	
Web Reports	
EM Stations	
Land	
303d	
Water	







RECEIVED

NOV 10 2009

DEPT. OF ECOLOGY  
TCP-NWRO

NOV 10 2009

DEPT. OF ECOLOGY  
TCP-NWRO

Ollvia Skance  
Project Manager  
Marketing Business Unit

Chevron Environmental  
Management Company  
6111 Bollinger Canyon Road  
San Ramon, CA 94583  
Tel (925) 543-2366  
Fax (925) 842-2324  
ollvia.skance@chevron.com

November 9, 2009

Ms. Carrie Pederson  
Washington Department of Ecology  
3190 160<sup>th</sup> Ave. SE  
Bellevue, Washington 98008-5452

Re: **Current and Heritage Chevron LUST sites in Northwest Washington**

Dear Ms. Pederson:

Chevron Environmental Management Company (Chevron) has prepared this letter in follow-up to our September 29, 2009 meeting regarding the status of Current and Heritage Chevron Leaking Underground Storage Tank (LUST) sites located within the Northwest Washington Region. Chevron has reviewed the list of sites (Attachment A) provided by Washington Northwest Department of Ecology (NW DOE) and taken into consideration the options discussed during our meeting. Chevron appreciates and shares NW DOE concerns regarding the pace of LUST site closures in the Northwest Region, and is proposing the following path forward.

All sites with measureable separate phase product (NAPL) will be enrolled in the Voluntary Clean-up Program (VCP), if this has not already occurred. The NW DOE identified 13 sites with NAPL in Attachment A. In reviewing this data and corresponding site information, Chevron has identified 8 sites with NAPL for which we are the Potentially Liable Party (PLP), as detailed in Attachment B, Table 2. One of these sites is presently enrolled in the VCP, and Attachment C contains completed VCP applications for the remaining 7 sites.

In addition to immediate enrollment in the VCP, Chevron has provided draft clean-up timelines for these 8 sites. The draft timeline identifies the dates when a Remedial Investigation/Feasibility Study (RI/FS) and No Further Action (NFA) Request are anticipated to be submitted to NW DOE based upon currently available site information and data. Although Chevron has already taken historic steps to address NAPL at many of these sites, a brief summary of steps to address NAPL at each site is included in Attachment B, Table 2.

Chevron has also begun the process of reviewing available files to identify PLP status for the 101 sites NW DOE provided in our September meeting. Chevron has to date confirmed PLP responsibility on 52 of these sites (Attachment B, Table 3). Further research is occurring to confirm PLP status at 45 sites (Attachment B, Table 5), and Chevron has confirmed we are not the PLP on 5 sites (Attachment B, Table 4).

Although Point Wells site #1001344 was included on the list provided by NW DOE, this is an asphalt terminal with multiple aboveground storage tanks that Chevron believes should not

be included in NW DOE's current efforts regarding LUST sites. Clean-up at this site is being managed and is progressing.

We look forward to meeting with you in person to discuss these issues further, and will be in touch via telephone to identify a meeting date in November that will be feasible for all necessary participants. Please contact me with any immediate questions or comments at (925) 543-2366 or [olivia.skance@chevron.com](mailto:olivia.skance@chevron.com).

Sincerely,



Olivia Skance  
Project Manager

Attachments:

- Attachment A - Table 1: Site List Presented by NW DOE
- Attachment B - Table 2: Sites Identified by Chevron or NW DOE Which Have Measurable NAPL
  - Table 3: Chevron is a PLP
  - Table 4: Chevron is not a PLP
  - Table 5: PLP Status Undetermined
- Attachment C - VCP Applications



Attachment A

Table 1  
Site List Provided by NW DOE

UST ID	ALT Name	Address	City	Cleanup Status
112	Chevron Station N County Service,	3628 116th St NE	Marysville	Awaiting Cleanup & RCU (2)
2754	Chevron Jerry's #002754	435 Griffin Ave	Enumclaw	Awaiting Cleanup & RCU (2)
5048	Chevron Station #9-0208	7580 35th SW	Seattle	RCU
5068	Chevron #9-0963	2620 Broadway	Everett	Cleanup started & RCU (2)
5083	Chevron Station #9-1209	355 NW 85th	Seattle	RCU
5084	Chevron Station #9-1253	620 Bay Street	Port Orchard	RCU
5087	Chevron Station #9-1364	1313 156th Ave NE	Bellevue	RCU
5088	Chevron Station #9-1377	1356 Midway	Oak Harbor	RCU
5096	Chevron Station #9-1676	8401 NE 12th	Medina	RCU
5107	Chevron Station #9-2022	3725 150th SE	Bellevue	RCU
5112	Chevron Station #9-2259	18514 Pac Hwy S	Seattle	RCU
5116	Chevron Station #9-2431	206 A St SE	Auburn	RCU
5120	Chevron Station #9-2581	10812 Main St	Bellevue	RCU
5131	Chevron Station #9-3013	617 Market St	Kirkland	RCU/VCP-rescinded
5140	Chevron Station #9-3398	2255 Bel-Red Rd	Redmond	RCU
5156	Chevron Station #9-3987	17017 Bothell Way NE	Seattle	RCU
5160	Chevron Crombies	15804 Des Moines Way S	Seatac	RCU
5173	Chevron Station Madison, 3121 E	3115 E Madison St	Seattle	RCU
5177	Chevron Station #9-4948	100 N Samish Way	Bellingham	RCU
5194	Chevron Station #9-5627	2727 Eastlake Ave E	Seattle	RCU
5235	Chevron #9-7451	2626 Bellevue Way NE	Bellevue	Cleanup started; free product 3/00
5241	Chevron Station #9-7856	23208 56th Ave W	Mountlake Terrace	RCU
5243	Chevron Station #9-7960	3520 Kitsap Way	Bremerton	RCU
5247	Chevron Station #9-8465	1315 Ave D	Snohomish	RCU
5255	Chevron Station #9-9105	15540 Lake Hills Blvd	Bellevue	RCU
5263	Chevron Station #9-9609	1206 4th St	Marysville	RCU
8770	Chevron Station Newport Hills	11919 SE 56th St	Bellevue	RCU
10823	Chevron Chuck's	11704 Hwy 99 S	Everett	RCU
98283	Chevron Station #20-0028	34727 Pacific Hwy S	Federal Way	RCU
97387	Chevron Station Edmonds (Priv)	7609 212th St SW	Edmonds	Cleanup started & RCU (2)
100242	Chevron Point Wells #1344 (3/91)	20500 Richmond Beach Dr NW	Shoreline	RCU
200588	Cement Distributors Inc	10220 Evergreen Way	Everett	RCU
5069	Chevron Station #9-0968	2021 Marker NW	Seattle	Cleanup started; free product 8/03; VCP resc



Table 1  
Site List Provided by NW DOE

5080	Chevron Station #9-1176	1511 S 348th	Federal Way	Cleanup started; VCP resc
5113	Chevron Station #9-2360	3204 129th Pl SE	Belleuve	Cleanup started; free product 6/04; VCP resc
5236	Chevron Station #9-7502	124 Ferry St	Sedro-Woolley	Cleanup started; free product 10/91
5250	Chevron Station #9-8538	31204 Pacific Hwy S	Federal Way	Cleanup started; VCP withdrawn
100969	Chevron Woodinville	13424 175th NE	Woodinville	Cleanup started; VCP withdrawn
200091	Chevron Bulk Plant 100-1324 (form	18218 Fjord Dr	Poulsbo	Cleanup started; VCP=resc
436162	Chevron Station Former	6th Avenue & S. Lane	Seattle	Cleanup started; free product 9/97
27	Chevron Rick's	8506 5th Ave NE	Seattle	Cleanup started
577	Herb's Chevron	224 W Ferry St	Sedro-Woolley	Cleanup started (2); free product 11/96
1447	Chevron Station #690 Midway	6905 Guide Meridian	Lynnden	Cleanup started; VCP withdrawn
2164	R-M Dist Co/Chevron Bulk	1194 NE Goldie St	oak Harbor	Cleanup started
5043	Chevron Station #9-0123	915 E Roy St	Seattle	Cleanup started/free product 2/93
5046	Chevron Station #9-0129	4700 Brooklyn Ave NE	Seattle	Cleanup started/free product 2/96
5060	Chevron Station #9-0619	2200 Elm Street	Bellingham	Cleanup started
5061	Chevron 9-0636	5940 E Marginal Way	Seattle	Awaiting Cleanup
5064	Chevron Station #9-0709	4211 Preston-Fall City Rd SE	Fall City	Cleanup Started
5100	Chevron Station #9-1841	10011 Main St	Belleuve	Cleanup started; free product 8/96
5111	Chevron Station #9-2175	13948 NE 20th St	Belleuve	Awaiting cleanup
5121	Chevron Station #9-2584	1424 NE 125th	Seattle	Cleanup started
5138	Chevron Station #9-3299	15900 116th Ave NE	Bothell	Awaiting cleanup
5179	Chevron 9 4999	20724 Bothell Way	Bothell	Cleanup started
5205	Chevron Station #9-6266	1554 NE 145th St	Shoreline	Cleanup started
5218	Chevron Station #9-6774	953 S Burlington Blvd	Burlington	Cleanup started
5256	Chevron Station #9-9114	301 Grady Way	Renton	Cleanup started; free product 12/00
5257	Chevron Ballinger Way	20330 15th Ave NE	Shoreline	Awaiting cleanup
5258	Chevron Station #9-9269	1649 Bellevue Way SE	Belleuve	Cleanup started
5261	Chevron 9-9555	6504 NE Bothell Way	Kenmore	Cleanup started
5366	Fairway Center Chevron	1750 Front Street	Lynnden	Cleanup started
7213	Chevron Bill's	18425 Aurora Ave N	Seattle	Cleanup started
8310	Chevron Station North Bend	302 W North Bend Way	North Bend	Cleanup started
100295	Chevron 20-0425	1220 Hildebrand Ln NE	Bainbridge Island	Cleanup started; VCP resc
100520	Chevron Station #20-0410	15510 Aurora Ave N	Seattle	Cleanup started
101758	Chevron Vacant Site	707 Taylor	Seattle	Cleanup started
101796	Chevron 9-3099	10805 E Marginal Way S	Tukwila	Cleanup started (3); free product 6/03



Table 1

Site List Provided by NW DOE

372858	Chevron Station	8250 Railroad Ave SE	Snoqualmie	Cleanup started
449526	Former Chevron #9-6600	4520 25th Ave NE	Seattle	Awaiting cleanup
5052	Chevron Station #9-0374	16256 NE 8th St	Bellevue	VCP in process
5262	Chevron Station #9-9574	2233 State Rd 530 NE	Arlington	RCU; VCP in process
6951	Chevron Station Border	608 Cherry St	Sumas	RCU, VCP in process
5044	Chevron Station #9-0126	12607 NE 85th St	Kirkland	Cleanup started; VCP in process
5051	Chevron Station #9-0333	2802 Rainier Ave S	Seattle	Awaiting cleanup; VCP in process
5054	Chevron #9-0445	214 128th SW	Everett	cleanup started; free product 10/04; VCP in process
5081	Chevron Station #9-1183	10921 Bothell Way SE	Everett	Cleanup started; VCP in process
5093	Chevron Station #9-1557	220 Strander Blvd	Tukwila	Cleanup started; VCP in process
5097	Chevron Station #9-1708	Rt 1 Frontier Village	Lake Stevens	Cleanup started; VCP in process
5103	Chevron #9-1951	1359 W Pioneer Way	Oak Harbor	Monitoring; VCP in process
5126	Chevron Station #9-2815	2150 N Northgate Way	Seattle	Cleanup started; VCP in process
5141	Chevron Station #9-3471	5127 168th Ave SW	Lynnwood	Awaiting cleanup; VCP in process
5158	Chevron Sta #9-4283	23701 Maple Valley Hwy	Maple Valley	Cleanup started; VCP in process
5167	Chevron Station #9-4511	617 NW Richmond Beach Dr	Shoreline	Cleanup started; VCP in process
5178	Chevron Station #9-4953	20000 44th Ave W	Lynnwood	Cleanup started; VCP in process
5186	Chevron 9-5277	9571 Silverdale Way NW	Silverdale	Cleanup started; VCP in process
5201	Chevron 9-6142	353 Village Plaza	Bainbridge Island	Cleanup started; VCP in process
5213	Chevron Station #9-6391	514 Main St East	Monroe	Monitoring; VCP in process
5227	Chevron Station #9-7111	19044 108th Ave SE	Renton	Monitoring; VCP in process
5248	Chevron #9-8473	28806 Military Rd S	Federal Way	Cleanup started; VCP in process
5249	Chevron Station #9-8484	8700 14th Ave S	Seattle	Cleanup started; VCP in process
5253	Chevron Svc Sln 9-8795	16010 Redmond Way	Redmond	Cleanup started; VCP in process
5260	Chevron Station #9-9481	647 140th NE	Bellevue	Monitoring; VCP in process
5264	Chevron Station #9-9624	3450 SW 320th	Federal Way	Cleanup started; VCP in process
6889	Chevron Station #9-4998	1501 Auburn Way N	Auburn	Cleanup started; VCP in process
8343	Chevron Station #9-1713	1202 Meeker St	Kent	Awaiting cleanup; VCP in process
9567	Exxon Station #7-3372	8402 Evergreen Way	Everett	Cleanup started; VCP in process
9763	Smokey Point Chevron	2804 172nd NE	Arlington	Awaiting cleanup; VCP in process
434904	Vashon East Shopping Ctr Old Chev	9740 SW Bank Rd & Vashon Hwy	Vashon Island	Monitoring; VCP in process
583072	Seattle Housing Authority-Maint P	1225 N 45th St	Seattle	Cleanup started; free product 6/01; VCP in process
5094	Chevron Station #9-1603	900 Iowa St	Bellingham	Cleanup started; VCP in process
100646	Chevron Gas Barn	486 Tye Dr	Point Roberts	Cleanup started; VCP in process



Attachment B

Table 2  
 Sites Identified by Chevron or NW DOE Which Have Measurable NAPL

ALT Name	Status of NAPL Clean-up or PLP Clarification	RI/FS ; NFA <sup>1</sup>
#9-0445	Measurable NAPL has not been detected in groundwater monitoring wells since 2006	NP <sup>2</sup>
#9-7451	NAPL is bailed on quarterly basis	12/2010; 12/2014
#9-0968	Passive absorbent sock to be installed in 4th Qtr 2009.	12/2012; 12/2020
#9-2360	Passive absorbent sock to be installed in 4th Qtr 2009.	11/2010; 12/2018
#9-7502	Application of surfactant to address NAPL was completed in 3rd Qtr 2009	12/2011; 12/2018
#9-8538	0.02' of NAPL detected 3rd Qtr 2009; Passive absorbent sock to be installed in 4th Qtr 2009.	12/2011; 1/2017
#9-0123	NAPL is bailed on quarterly basis	4/2011; 11/2014
#9-0129	Measurable NAPL has not been detected in groundwater monitoring wells since 2005	NP <sup>2</sup>
#9-1841	Measurable NAPL has not been detected in groundwater monitoring wells since 2008	NP <sup>2</sup>
#9-9114	Measurable NAPL has not been detected in groundwater monitoring wells since 2007	NP <sup>2</sup>
#20-0410	Measurable NAPL 1st detected 3rd Qtr 2009, NAPL confirmation measurement in 4th Qtr 2009	11/2010; 10/2014
#209335	Passive absorbent sock installed.	8/2010; 10/2014
#9-3099	NAPL result of release from current property and station owner, DOE Release ID # 597103	NP <sup>2</sup>
#92546	Chevron is not the current owner/operator; historic owner/operator status under investigation	NP <sup>2</sup>
Chevron Station Former	Chevron has no records of ownership or liability for this property/former station	NP <sup>2</sup>

<sup>1</sup> Anticipated Submittal Dates of RI/FS and Closure Request based upon currently available site information and data

<sup>2</sup> RI/FS and NFA dates are not provided herein, as NAPL is not present and/or Chevron is not the PLP



Table 2  
 Sites Identified by Chevron or NW DOE Which Have Measurable NAPL

ALT Name	Address	City	Cleanup Status	NAPL Present
#9-0445	214 128th SW	Everett	Cleanup started; free product 10/04; VCP in process	No
#9-7451	2626 Bellevue Way NE	Bellevue	Cleanup started; free product 3/00	Yes
#9-0968	2021 Market NW	Seattle	Cleanup started; free product 8/03; VCP resc	Yes
#9-2360	3204 129th Pl SE	Bellevue	Cleanup started; free product 6/04; VCP resc	Yes
#9-7502	124 Ferry St	Sedro-Woolley	Cleanup started; free product 10/91	Yes
#9-8538	31204 Pacific Hwy S	Federal Way	Cleanup started; VCP withdrawn	Yes
#9-0123	915 E Roy St	Seattle	Cleanup started/free product 2/93	Yes
#9-0129	4700 Brooklyn Ave NE	Seattle	Cleanup started/free product 2/96	No
#9-1841	10011 Main St	Bellevue	Cleanup started; free product 8/96	No
#9-9114	301 Grady Way	Renton	Cleanup started; free product 12/00	No
#20-0410	15510 Aurora Ave N	Seattle	Cleanup started	Yes
#209335	1225 N 45th St	Seattle	Cleanup started; free product 6/01; VCP in process	Yes
#9-3099	10805 E Marginal Way S	Tukwila	Cleanup started (3); free product 6/03	Yes
#92546	224 W Ferry St	Sedro-Woolley	Cleanup started (2); free product 11/96	Unknown
Chevron Station Former	6th Avenue & S. Lane	Seattle	Cleanup started; free product 9/97	Unknown

Table 3  
Chevron Is PLP

ALT Name	Address	City
Chevron Point Wells #1001344	20500 Richmond Beach Dr NW	Shoreline
Chevron Station #9-9609	1206 4th St	Marysville
Chevron Station #9-0374	16256 NE 8th St	Bellevue
Chevron Station #9-9574	2233 State Rd 530 NE	Arlington
Chevron Station #9-0333	2802 Rainier Ave S	Seattle
Chevron #9-0445	214 128th SW	Everett
Chevron Station #9-1183	10921 Bothell Way SE	Everett
Chevron Station #9-1557	220 Strander Blvd	Tukwila
Chevron Station #9-1708	Rt 1 Frontier Village	lake Stevens
Chevron #9-1951	1359 W Pioneer Way	Oak Harbor
Chevron Sta #9-4283	23701 Maple Valley Hwy	Maple Valley
Chevron Station #9-4511	617 NW Richmond Beach Dr	Shoreline
Chevron 9-5277	9571 Silverdale Way NW	Silverdale
Chevron Station #9-6391	514 Main St East	Monre
Chevron Station #9-7111	19044 108th Ave SE	Renton
Chevron #9-8473	28806 Military Rd S	Federal Way
Chevron Station #9-8484	8700 14th Ave S	Seattle
Chevron Svc Stn 9-8795	16010 Redmond Way	Redmond
Chevron Station #9-9481	647 140th NE	Bellevue
Chevron Station #9-9624	3450 SW 320th	Federal Way
Chevron Station #9-1603	900 Iowa St	Bellingham
Chevron #9-7451	2626 Bellevue Way NE	Bellevue
Chevron Station #9-0968	2021 Market NW	Seattle
Chevron Station #9-1176	1511 S 348th	Federal Way
Chevron Station #9-2360	3204 129th PI SE	Bellevue
Chevron Station #9-7502	124 Ferry St	Sedro-Woolley
Chevron Station #9-8538	31204 Pacific Hwy S	Federal Way
Chevron Bulk Plant 100-1324 (former)	18218 Fjord Dr	Poulsbo
Chevron Station #9-0123	915 E Roy St	Seattle
Chevron Station #9-0129	4700 Brooklyn Ave NE	Seattle
Chevron 9-0636	5940 E Marginal Way	Seattle
Chevron Station #9-1841	10011 Main St	Bellevue
Chevron Station #9-2175	13948 NE 20th St	Bellevue
Chevron Station #9-6266	1554 NE 145th St	Shoreline
Chevron Station #9-9114	301 Grady Way	Renton
Chevron Station #9-9269	1649 Bellevue Way SE	Bellevue
Chevron Bill's (Station #9-1584)	18425 Aurora Ave N	Seattle
Chevron 20-0425	1220 Hildebrand Ln NE	Bainbridge Island
Chevron Station #20-0410	15510 Aurora Ave N	Seattle
Chevron 9-3099	10805 E Marginal Way S	Tukwila
Chevron Station #9-0126	12607 NE 85th St	Kirkland
Chevron Station #9-2815	2150 N Northgate Way	Seattle
Chevron Station #9-3471	5127 168th Ave SW	Lynnwood
Chevron Station #9-4953	20000 44th Ave W	Lynnwood
Chevron 9-6142	353 Village Plaza	Bainbridge Island
Chevron Station #9-4998	1501 Auburn Way N	Auburn



Table 3  
Chevron is PLP

Chevron Station #9-1713	1202 Meeker St	Kent
Seattle Housing Authority-Maint Pkg Lot (Station #209335)	1225 N 45th St	Seattle
Chevron Station #9-2022	3725 150th SE	Bellevue
Chevron Station #20-0028	34727 Pacific Hwy S	Federal Way
Chevron Station #9-3299	15900 116th Ave NE	Bothell
Vashon East Shopping Ctr Old Chevron	9740 SW Bank Rd & Vashon Hwy	Vashon Island

Table 4  
Chevron Is Not A PLP

ALT Name	Address	City	PLP Status
Chevron Station #690 Midway	6905 Guide Meridian	Lynden	Chevron is not a PLP, as Chevron is not the property or station owner.
R-M Dist Co/Chevron Bulk	1194 NE Goldie St	Oak Harbor	Chevron is not a PLP, as Chevron is not the property or station owner.
Chevron Station Former	6th Avenue & S. Lane	Seattle	Chevron has no records of ownership or liability for this property.
Fairway Center Chevron	1750 Front Street	Lynden	Chevron is not a PLP, and has no historic or current ownership of the property or station.
Chevron Vacant Site	707 Taylor	Seattle	Chevron has no records of ownership or liability for this property.



Table 5  
PLP Status Undetermined

ALT Name	Address	City	Chevron Site
Chevron Station N County Service, Former	3628 116th St NE	Marysville	#9-3268
Chevron Jerry's #002754	435 Griffin Ave	Enumclaw	#9-0202
Chevron Stration #9-0208	7580 35th SW	Seattle	#9-0208
Chevron #9-0963	2620 Broadway	Everett	#9-0963
Chevron Station #9-1209	355 NW 85th	Seattle	#9-1209
Chevron Station #9-1253	620 Bay Street	Port Orchard	#9-1253
Chevron Station #9-1364	1313 156th Ave NE	Bellevue	#9-1364
Chevron Station #9-1377	1356 Midway	Oak Harbor	#9-1377
Chevron Station #9-1676	8401 NE 12th	Medina	#9-1676
Chevron Station #9-2022	3725 150th SE	Bellevue	#9-2022
Chevron Station #9-2259	18514 Pac Hwy S	Seattle	#9-2259
Chevron Station #9-2431	206 A St SE	Auburn	#9-2431
Chevron Station #9-3013	617 Market St	Kirkland	#9-3013
Chevron Station #9-3398	2255 Bel-Red Rd	Redmond	#9-3398
Chevron Station #9-3987	17017 Bothell Way NE	Seattle	#9-3987
Chevron Crombies	15804 Des Moines Way S	Seatac	#9-4312
Chevron Station Madison, 3121 E Madison	3115 E Madison St	Seattle	#9-4715
Chevron Station #9-4948	100 N Samish Way	Bellingham	#9-4948
Chevron Station #9-5627	2727 Eastlake Ave E	Seattle	#9-5627
Chevron Station #9-7856	23208 56th Ave W	Mountlake Terrace	#9-7856
Chevron Station #9-7960	3520 Kitsap Way	Bremerton	#9-7960
Chevron Station #9-8465	1315 Ave D	Snohomish	#9-8465
Chevron Station #9-9105	15540 Lake Hills Blvd	Bellevue	#9-9105
Chevron Station Newport Hills	11919 SE 56th St	Bellevue	#9-0825
Chevron Chuck's	11704 Hwy 99 S	Everett	#20-3405
Chevron Station Edmonds (Priv)	7609 212th St SW	Edmonds	#9-8489
Cement Distributors Inc	10220 Evergreen Way	Everett	#20-7894
Chevron Woodinville	13424 175th NE	Woodinville	#9-4961
Chevron Rick's	8506 5th Ave NE	Seattle	#9-0451
Herb's Chevron	224 W Ferry St	Sedro-Woolley	#9-2546
Chevron Station #9-0619	2200 Elm Street	Bellingham	#9-0619
Chevron Station #9-0709	4211 Preston-Fall City Rd SE	Fall City	#9-0709
Chevron Station #9-2584	1424 NE 125th	Seattle	#9-2584

Table 5  
PLP Status Undetermined

Chevron Station #9-3299	15900 1.16th Ave NE	Bothell	#9-3299
Chevron 9 4999	20724 Bothell Way	Bothell	#9-4999
Chevron Station #9-6774	953 S Burlington Blvd	Burlington	#9-6774
Chevron Ballinger Way	20330 15th Ave NE	Shoreline	#9-9124
Chevron 9-9555	6504 NE Bothell Way	Kenmore	#9-9555
Chevron Station North Bend	302 W North Bend Way	North Bend	#30-6333
Chevron Station	8250 Railroad Ave SE	Snoqualmie	#20-4443
Former Chevron #9-6600	4520 25th Ave NE	Seattle	#9-6600
Chevron Station Border	608 Cherry St	Sumas	#9-1999
Exxon Station #7-3372	8402 Evergreen Way	Everett	#20-3561
Smokey Point Chevron	2804 172nd NE	Arlington	#20-3408
Chevron Gas Barn	486 Tye Dr	Point Roberts	#9-9965



Attachment C

