

KEY:

MONITOR WELL/BORING DESIGNATION: MW-11 (ELEV=+0.00)

MONITOR WELL/BORING LOCATION

FILL

SAND

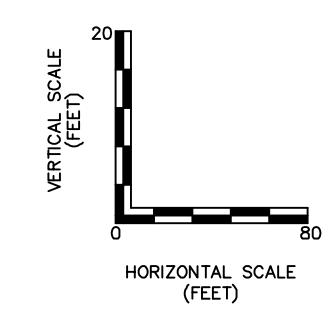
GRAVEL

POORLY GRADED GRAVEL

GROUNDWATER ELEVATION MEASURED ON 6/28/2010

T TIDEWATER

C CPL



<p>10550 RICHMOND AVENUE, SUITE 155 HOUSTON, TEXAS 77042 PH: (713) 914-6699 FAX: (713) 789-8404</p>			<p>Title: REVISED GEOLOGIC CROSS-SECTION B - B'</p>		
			<p>Project: NWTC PASCO TERMINAL PASCO, WASHINGTON</p>		
<p>Scale: AS SHOWN</p>			<p>Client: CHEVRON PIPE LINE COMPANY</p>		
<p>Drawn by: CLK</p>	<p>Date: 09/19/11</p>	<p>Project No.: 25012120</p>	<p>File Name: Cross Section B-B'-Rev.dwg</p>	<p>Date: 09/19/11</p>	<p>Figure: 7</p>

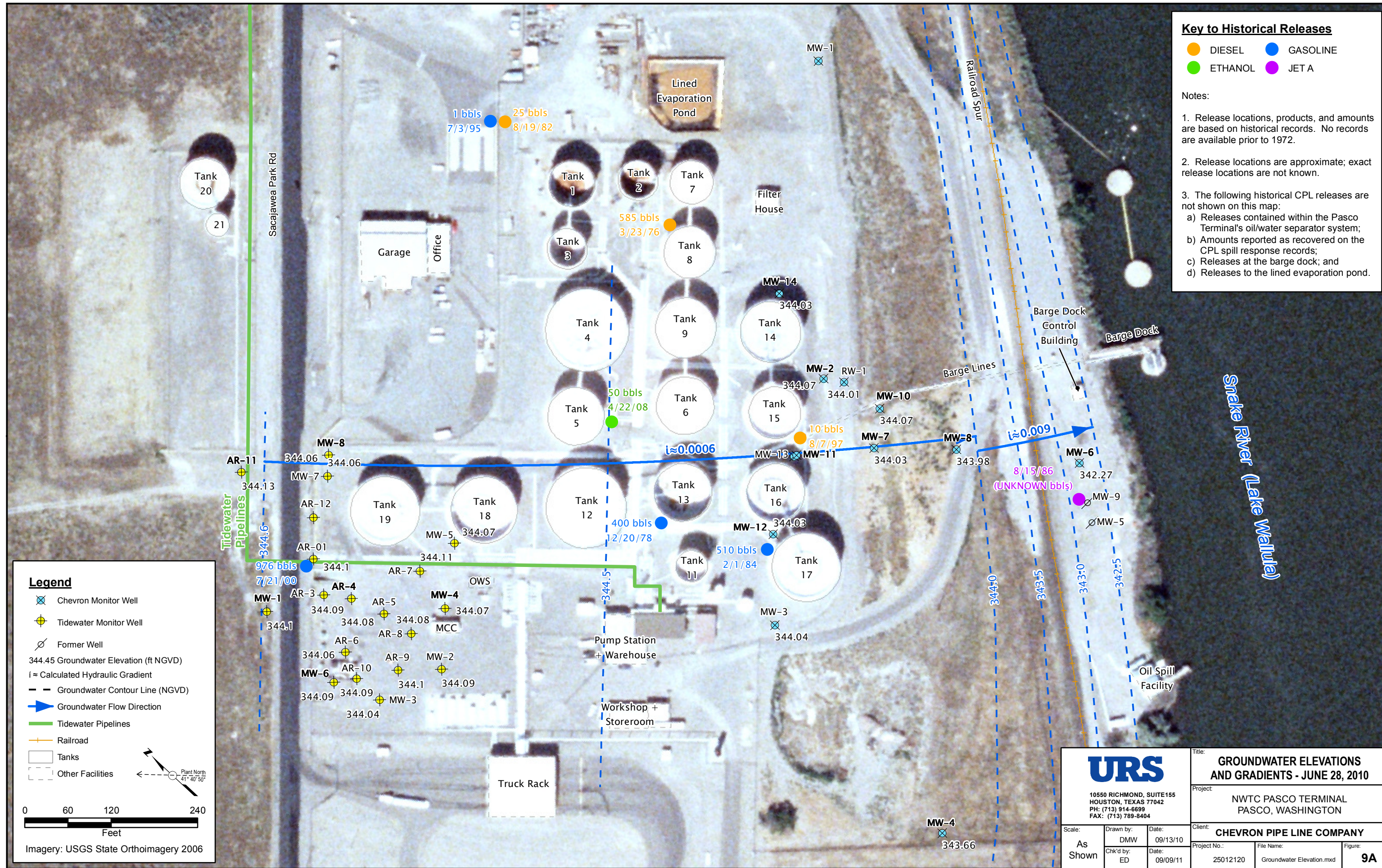
FIGURE 4

Key to Historical Releases

- DIESEL
- GASOLINE
- ETHANOL
- JET A

Notes:

1. Release locations, products, and amounts are based on historical records. No records are available prior to 1972.
2. Release locations are approximate; exact release locations are not known.
3. The following historical CPL releases are not shown on this map:
 - a) Releases contained within the Pasco Terminal's oil/water separator system;
 - b) Amounts reported as recovered on the CPL spill response records;
 - c) Releases at the barge dock; and
 - d) Releases to the lined evaporation pond.



Legend

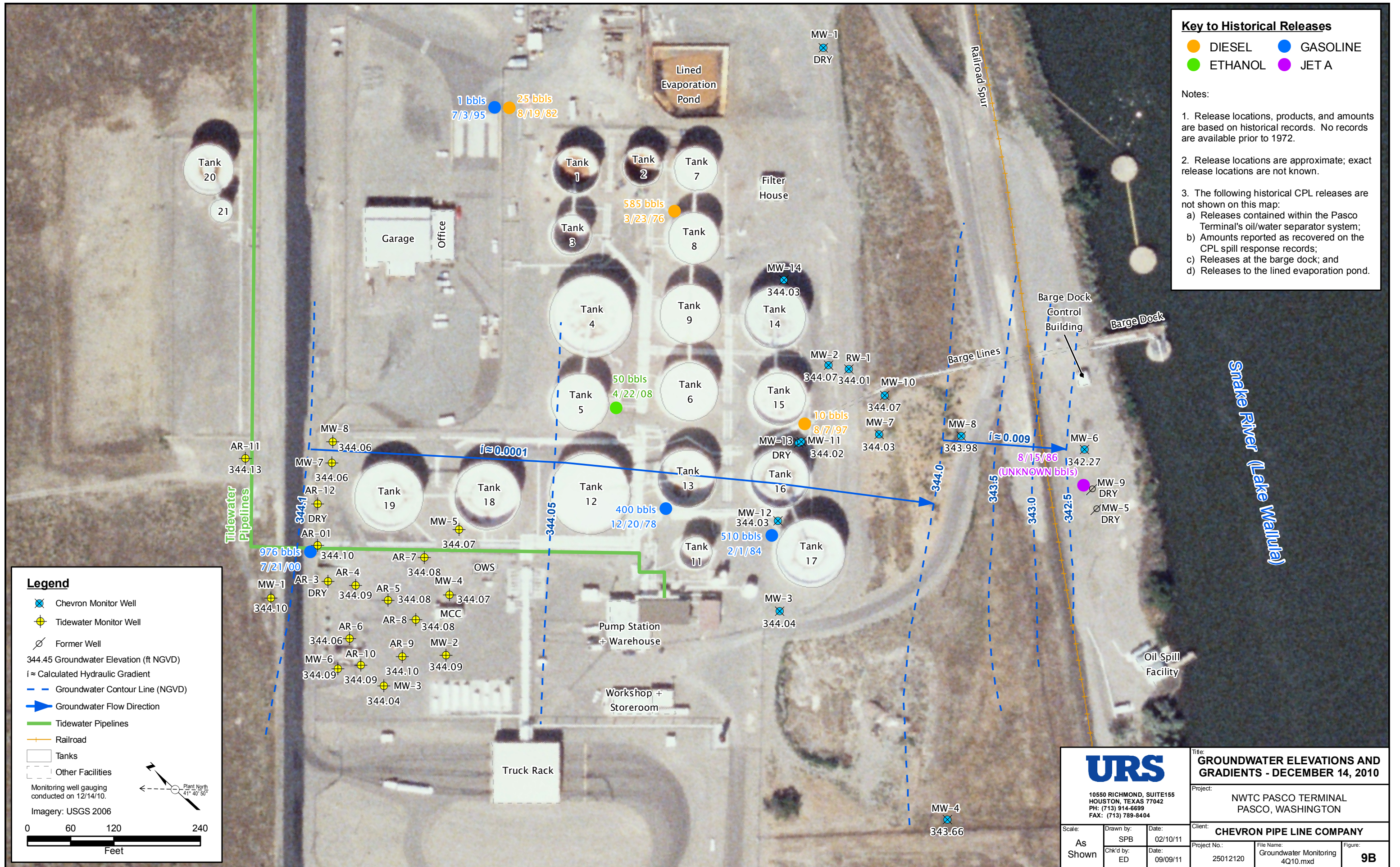
- ⊗ Chevron Monitor Well
- ⊕ Tidewater Monitor Well
- ⊕ Former Well
- 344.45 Groundwater Elevation (ft NGVD)
- $i \approx$ Calculated Hydraulic Gradient
- Groundwater Contour Line (NGVD)
- ➔ Groundwater Flow Direction
- Tidewater Pipelines
- Railroad
- Tanks
- Other Facilities

Plant North
41° 40' 50"

0 60 120 240
Feet

Imagery: USGS State Orthoimagery 2006

		Title: GROUNDWATER ELEVATIONS AND GRADIENTS - JUNE 28, 2010	
		Project: NWTC PASCO TERMINAL PASCO, WASHINGTON	
10550 RICHMOND, SUITE 155 HOUSTON, TEXAS 77042 PH: (713) 914-6699 FAX: (713) 789-8404		Client: CHEVRON PIPE LINE COMPANY	
Scale: As Shown	Drawn by: DMW	Date: 09/13/10	Client: CHEVRON PIPE LINE COMPANY
	Chk'd by: ED	Date: 09/09/11	Project No.: 25012120
			File Name: Groundwater Elevation.mxd
			Figure: 9A



Key to Historical Releases

- DIESEL
- GASOLINE
- ETHANOL
- JET A

Notes:

- Release locations, products, and amounts are based on historical records. No records are available prior to 1972.
- Release locations are approximate; exact release locations are not known.
- The following historical CPL releases are not shown on this map:
 - Releases contained within the Pasco Terminal's oil/water separator system;
 - Amounts reported as recovered on the CPL spill response records;
 - Releases at the barge dock; and
 - Releases to the lined evaporation pond.

Legend

- ⊗ Chevron Monitor Well
- ⊕ Tidewater Monitor Well
- ⊘ Former Well
- 344.45 Groundwater Elevation (ft NGVD)
- $i \approx$ Calculated Hydraulic Gradient
- - - Groundwater Contour Line (NGVD)
- ➔ Groundwater Flow Direction
- Tidewater Pipelines
- Railroad
- ▭ Tanks
- ▭ Other Facilities

Monitoring well gauging conducted on 12/14/10.
Imagery: USGS 2006

Scale: 0 60 120 240 Feet

Plant North 41° 40' 50"

<p>10550 RICHMOND, SUITE 155 HOUSTON, TEXAS 77042 PH: (713) 914-6699 FAX: (713) 789-8404</p>		<p>Title: GROUNDWATER ELEVATIONS AND GRADIENTS - DECEMBER 14, 2010</p>	
		<p>Project: NWTC PASCO TERMINAL PASCO, WASHINGTON</p>	
<p>Scale: As Shown</p>	<p>Drawn by: SPB</p>	<p>Date: 02/10/11</p>	<p>Client: CHEVRON PIPE LINE COMPANY</p>
<p>Chk'd by: ED</p>	<p>Date: 09/09/11</p>	<p>Project No.: 25012120</p>	<p>File Name: Groundwater Monitoring 4Q10.mxd</p>
			<p>Figure: 9B</p>

Key to Historical Releases

- DIESEL
- GASOLINE
- ETHANOL
- JET A

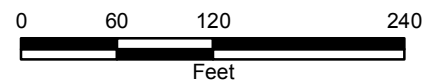
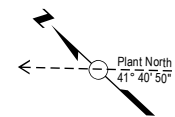
Notes:

1. Release locations, products, and amounts are based on historical records. No records are available prior to 1972.
2. Release locations are approximate; exact release locations are not known.
3. The following historical CPL releases are not shown on this map:
 - a) Releases contained within the Pasco Terminal's oil/water separator system;
 - b) Amounts reported as recovered on the CPL spill response records;
 - c) Releases at the barge dock; and
 - d) Releases to the lined evaporation pond.

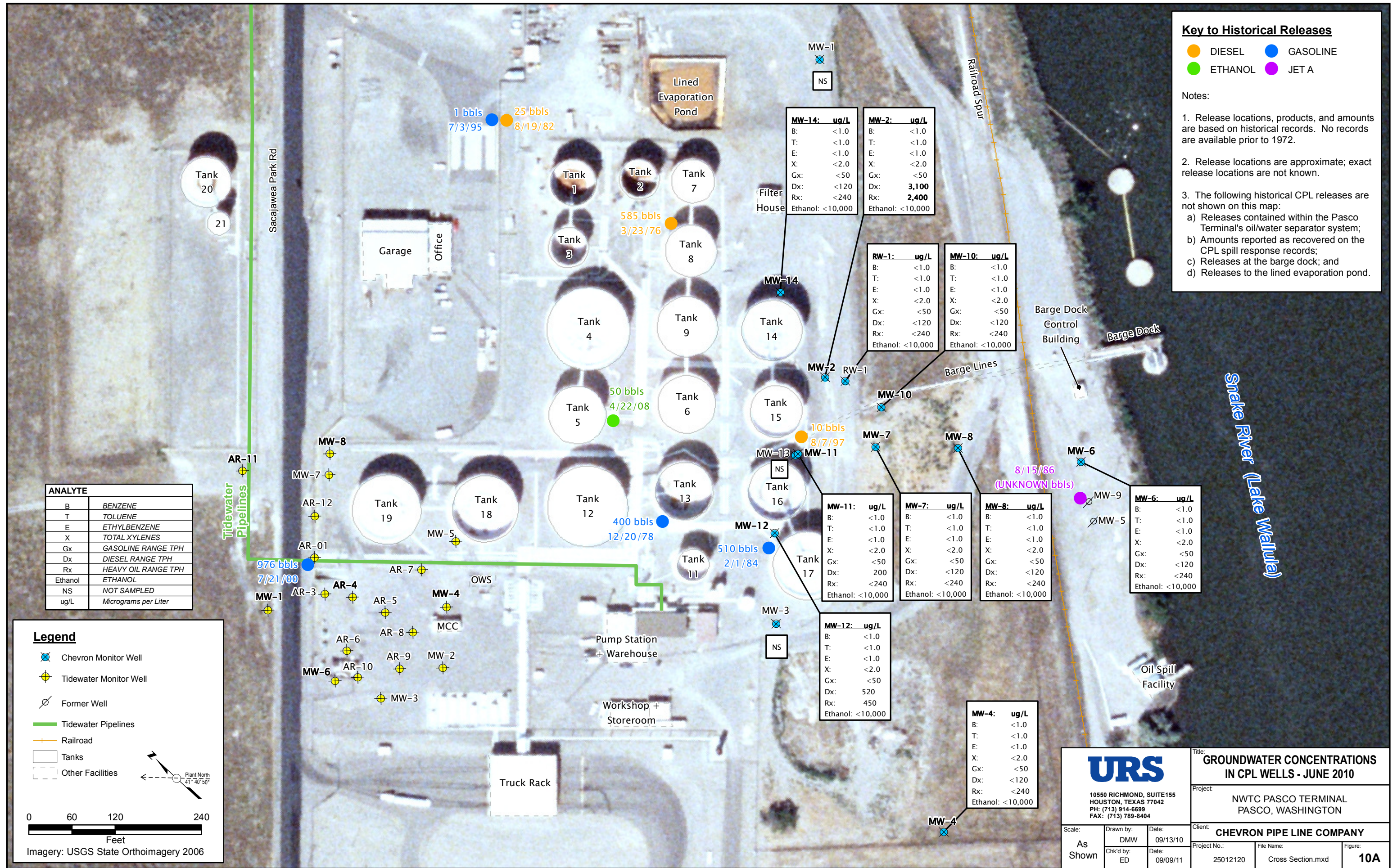
ANALYTE	
B	BENZENE
T	TOLUENE
E	ETHYLBENZENE
X	TOTAL XYLENES
Gx	GASOLINE RANGE TPH
Dx	DIESEL RANGE TPH
Rx	HEAVY OIL RANGE TPH
Ethanol	ETHANOL
NS	NOT SAMPLED
ug/L	Micrograms per Liter

Legend

- ⊗ Chevron Monitor Well
- ⊗ Tidewater Monitor Well
- ⊗ Former Well
- Tidewater Pipelines
- Railroad
- Tanks
- Other Facilities



Imagery: USGS State Orthoimagery 2006



MW-14: ug/L

B: <1.0
T: <1.0
E: <1.0
X: <2.0
Gx: <50
Dx: <120
Rx: <240
Ethanol: <10,000

MW-2: ug/L

B: <1.0
T: <1.0
E: <1.0
X: <2.0
Gx: <50
Dx: **3,100**
Rx: **2,400**
Ethanol: <10,000

RW-1: ug/L

B: <1.0
T: <1.0
E: <1.0
X: <2.0
Gx: <50
Dx: <120
Rx: <240
Ethanol: <10,000

MW-10: ug/L

B: <1.0
T: <1.0
E: <1.0
X: <2.0
Gx: <50
Dx: <120
Rx: <240
Ethanol: <10,000

MW-11: ug/L

B: <1.0
T: <1.0
E: <1.0
X: <2.0
Gx: <50
Dx: 200
Rx: <240
Ethanol: <10,000

MW-7: ug/L

B: <1.0
T: <1.0
E: <1.0
X: <2.0
Gx: <50
Dx: <120
Rx: <240
Ethanol: <10,000

MW-8: ug/L

B: <1.0
T: <1.0
E: <1.0
X: <2.0
Gx: <50
Dx: <120
Rx: <240
Ethanol: <10,000

MW-6: ug/L

B: <1.0
T: <1.0
E: <1.0
X: <2.0
Gx: <50
Dx: <120
Rx: <240
Ethanol: <10,000

MW-12: ug/L

B: <1.0
T: <1.0
E: <1.0
X: <2.0
Gx: <50
Dx: 520
Rx: 450
Ethanol: <10,000

MW-4: ug/L

B: <1.0
T: <1.0
E: <1.0
X: <2.0
Gx: <50
Dx: <120
Rx: <240
Ethanol: <10,000

<p>10550 RICHMOND, SUITE 155 HOUSTON, TEXAS 77042 PH: (713) 914-6699 FAX: (713) 789-8404</p>		<p>Title: GROUNDWATER CONCENTRATIONS IN CPL WELLS - JUNE 2010</p>	
		<p>Project: NWTC PASCO TERMINAL PASCO, WASHINGTON</p>	
Scale: As Shown	Drawn by: DMW	Date: 09/13/10	Client: CHEVRON PIPE LINE COMPANY
Chk'd by: ED	Date: 09/09/11	Project No.: 25012120	File Name: Cross Section.mxd
			Figure: 10A

Key to Historical Releases

- DIESEL ● GASOLINE
- ETHANOL ● JET A

Notes:

1. Release locations, products, and amounts are based on historical records. No records are available prior to 1972.
2. Release locations are approximate; exact release locations are not known.
3. The following historical CPL releases are not shown on this map:
 - a) Releases contained within the Pasco Terminal's oil/water separator system;
 - b) Amounts reported as recovered on the CPL spill response records;
 - c) Releases at the barge dock; and
 - d) Releases to the lined evaporation pond.

ANALYTE	
B	BENZENE
T	TOLUENE
E	ETHYLBENZENE
X	TOTAL XYLENES
Gx	GASOLINE RANGE TPH
Dx	DIESEL RANGE TPH
Rx	HEAVY OIL RANGE TPH
Ethanol	ETHANOL
NS	NOT SAMPLED
ug/L	Micrograms per Liter

Legend

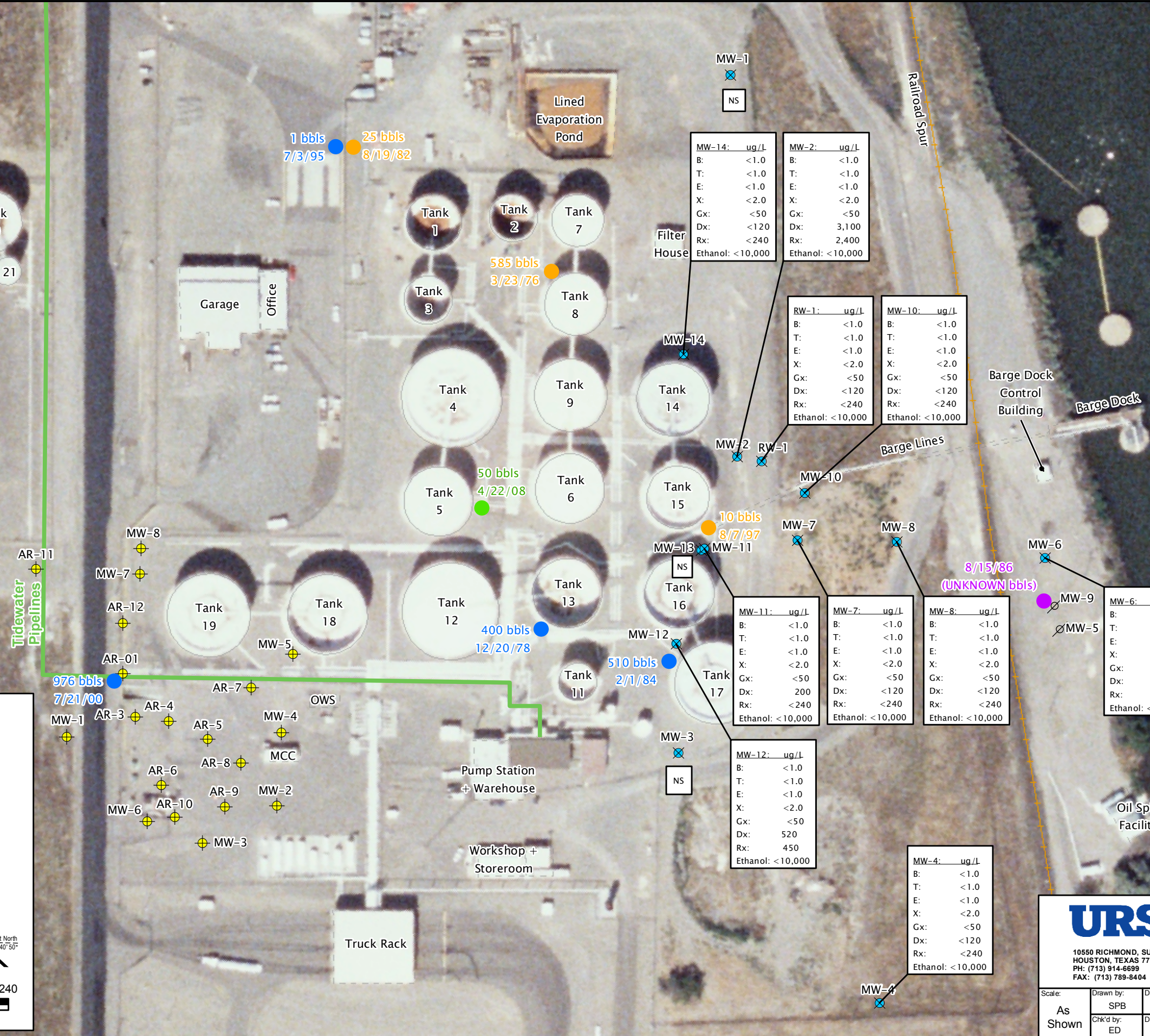
- ⊗ Chevron Monitor Well
- ⊕ Tidewater Monitor Well
- ⊕ Former Well
- Tidewater Pipelines
- Railroad
- Tanks
- Other Facilities

Monitor wells sampled 12/14-17/10.

Note: **Bold** value exceeds Method A Cleanup Level

Imagery: USGS 2006

Plant North 41° 40' 50"



MW-14: ug/L

B:	<1.0
T:	<1.0
E:	<1.0
X:	<2.0
Gx:	<50
Dx:	<120
Rx:	<240
Ethanol:	<10,000

MW-2: ug/L

B:	<1.0
T:	<1.0
E:	<1.0
X:	<2.0
Gx:	<50
Dx:	3,100
Rx:	2,400
Ethanol:	<10,000

MW-10: ug/L

B:	<1.0
T:	<1.0
E:	<1.0
X:	<2.0
Gx:	<50
Dx:	<120
Rx:	<240
Ethanol:	<10,000

MW-11: ug/L

B:	<1.0
T:	<1.0
E:	<1.0
X:	<2.0
Gx:	<50
Dx:	200
Rx:	<240
Ethanol:	<10,000

MW-7: ug/L

B:	<1.0
T:	<1.0
E:	<1.0
X:	<2.0
Gx:	<50
Dx:	<120
Rx:	<240
Ethanol:	<10,000

MW-8: ug/L

B:	<1.0
T:	<1.0
E:	<1.0
X:	<2.0
Gx:	<50
Dx:	<120
Rx:	<240
Ethanol:	<10,000

MW-6: ug/L

B:	<1.0
T:	<1.0
E:	<1.0
X:	<2.0
Gx:	<50
Dx:	<120
Rx:	<240
Ethanol:	<10,000

MW-12: ug/L

B:	<1.0
T:	<1.0
E:	<1.0
X:	<2.0
Gx:	<50
Dx:	520
Rx:	450
Ethanol:	<10,000

MW-4: ug/L

B:	<1.0
T:	<1.0
E:	<1.0
X:	<2.0
Gx:	<50
Dx:	<120
Rx:	<240
Ethanol:	<10,000

<p>10550 RICHMOND, SUITE 155 HOUSTON, TEXAS 77042 PH: (713) 914-6699 FAX: (713) 789-8404</p>	<p>Title: GROUNDWATER CONCENTRATIONS IN CPL WELLS - DECEMBER 2010</p>	
	<p>Project: NWTC PASCO TERMINAL PASCO, WASHINGTON</p>	
<p>Scale: As Shown</p>	<p>Drawn by: SPB</p>	<p>Date: 02/08/11</p>
<p>Client: CHEVRON PIPE LINE COMPANY</p>	<p>Project No.: 25012120</p>	<p>File Name: Analytics.mxd</p>
<p>Imagery: USGS 2006</p>	<p>Chk'd by: ED</p>	<p>Date: 09/09/11</p>
		<p>Figure: 10B</p>