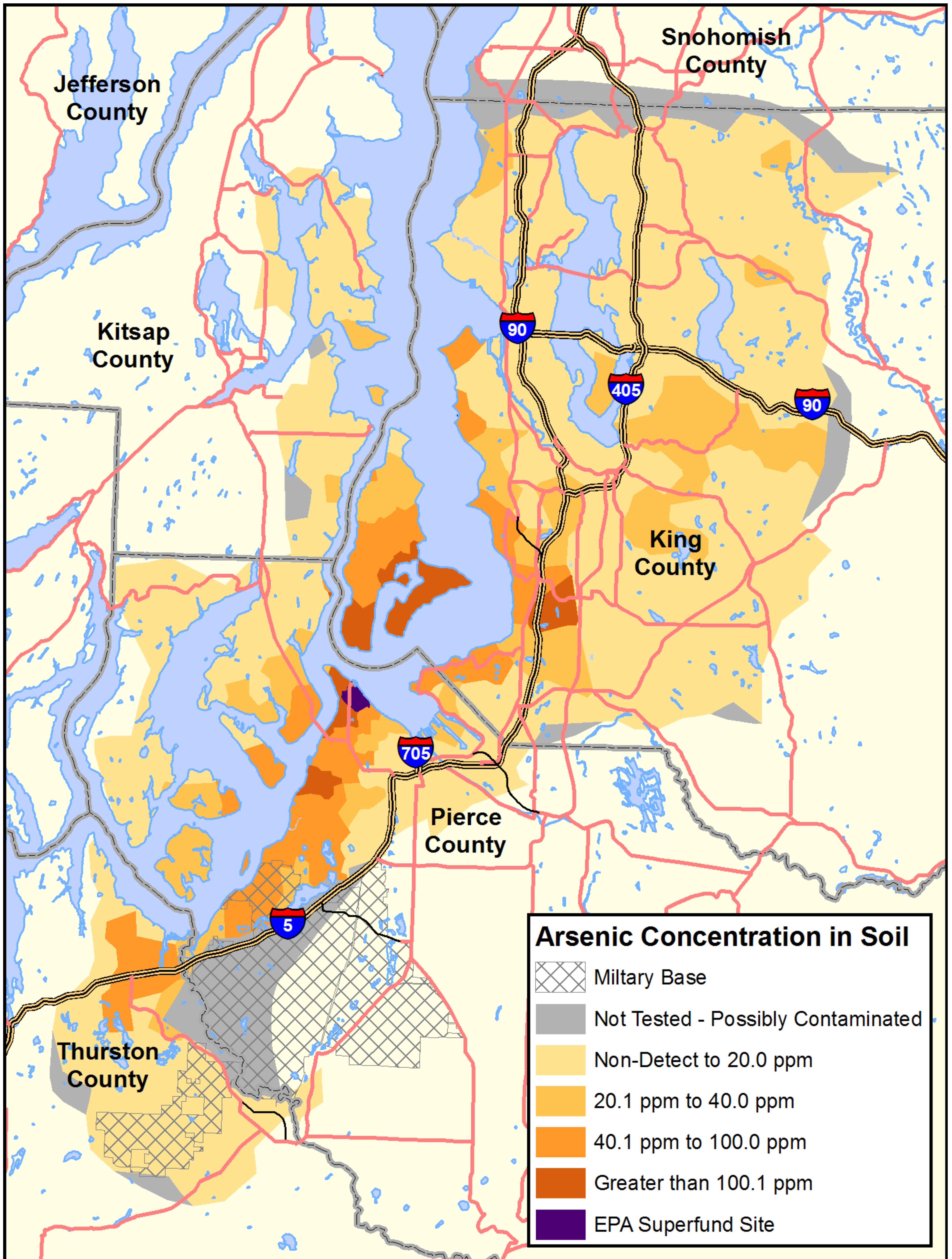


# Tacoma Smelter Plume



This map shows the general pattern of arsenic contamination from air emissions from the former Asarco smelter in Ruston and north Tacoma. Ecology used soil sampling data to **estimate** the **highest** arsenic levels likely to be in a given area. A property may have lower or higher levels than the map shows. To tell if your soil is contaminated requires sampling on your property.