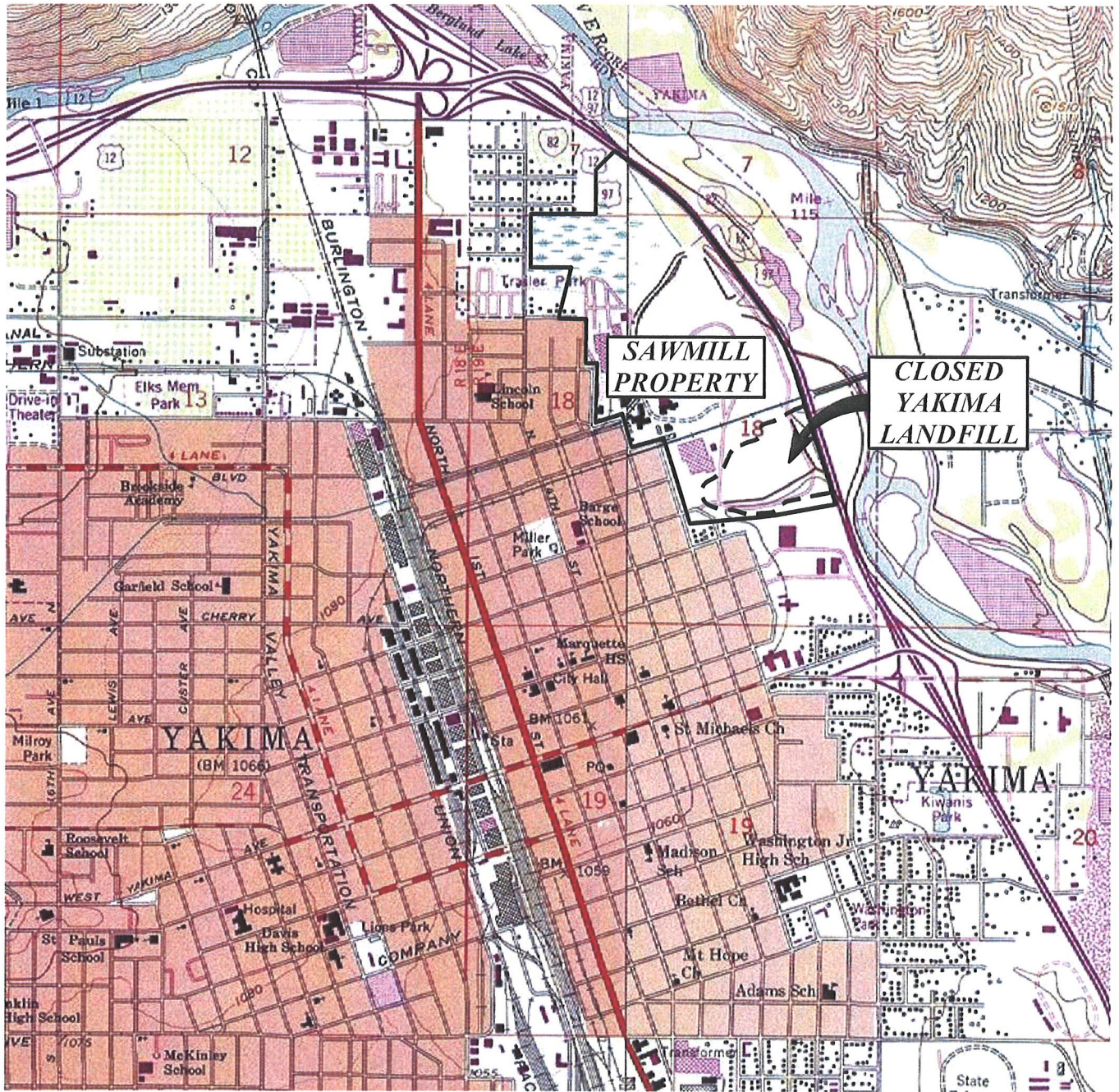


## FIGURES



0 2000 4000

SCALE IN FEET



WASHINGTON

SOURCE: USGS 7.5 Minute Quadrangle Yakima West and Yakima East, 1985 Contour Interval 20 Feet.

FIGURE 1  
CLOSED CITY OF YAKIMA MUNICIPAL LANDFILL  
YAKIMA, WASHINGTON

LANDFILL LOCATION MAP

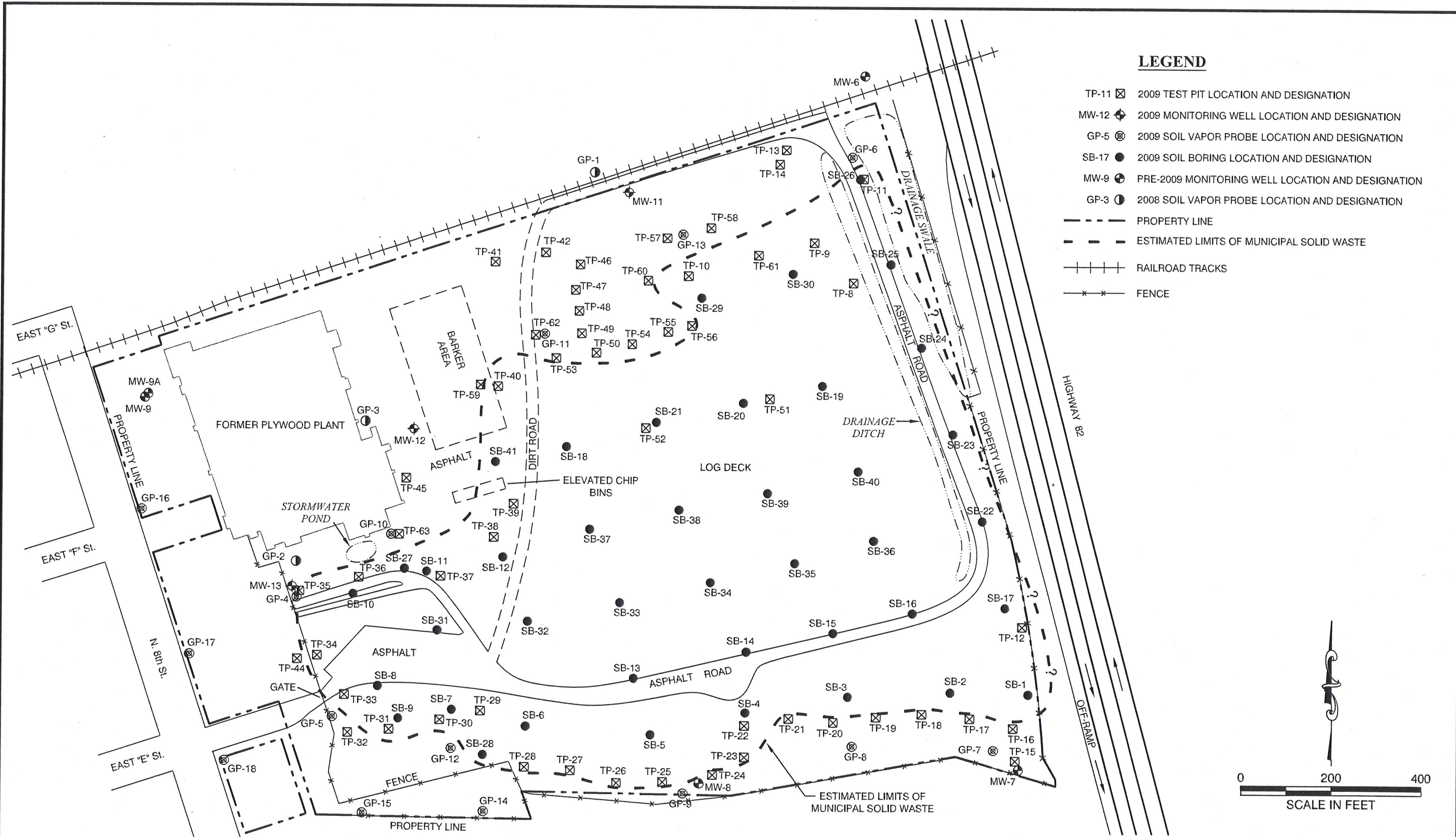
**SLR**  
SLR International Corp

22122 20th AVE SE  
BLDG. H, SUITE 150  
BOTHELL, WA 98021

T: 425-402-8800  
F: 425-402-8488

DATE 09/09  
DWN. BDT  
APPR. \_\_\_\_\_  
REVIS. \_\_\_\_\_  
PROJECT NO.  
001.0221.00006

C:\DRIVE\E\Clients\SLR\001001.0221.0000403-02.dwg, 4/22/2009 6:07:01 PM, BDT



**SLR**  
 SLR International Corp

22122 20th AVE SE  
 BLDG. H, SUITE 150  
 BOTHELL, WA 98021

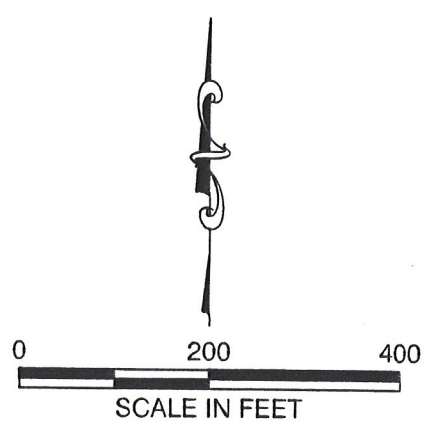
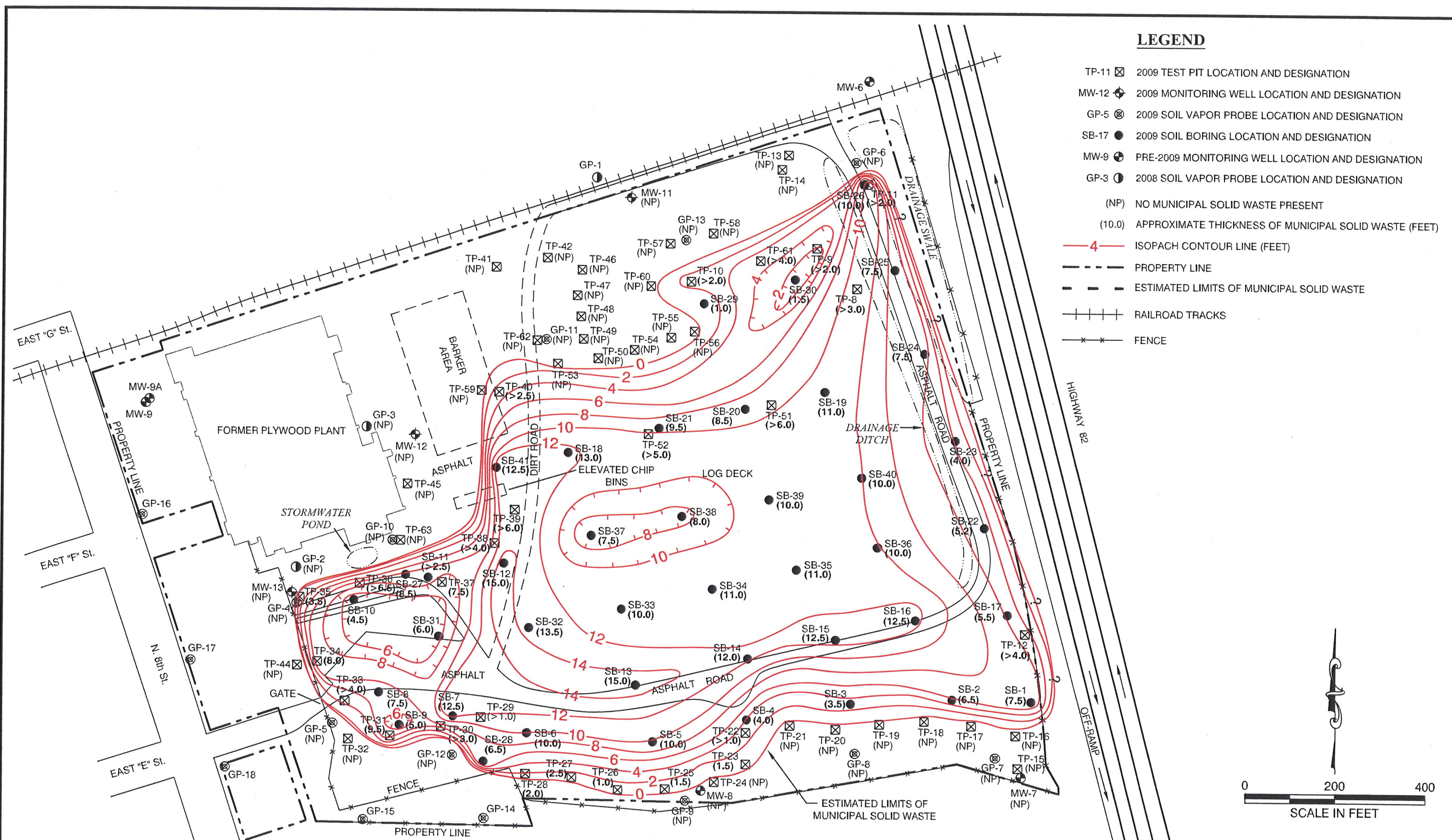
T: 425-402-8800  
 F: 425-402-8488

DATE	04/09
DWN.	BDT
APPR.	
REVIS.	
PROJECT NO.	001.0221.00004

**FIGURE 2**  
**CLOSED CITY OF YAKIMA MUNICIPAL LANDFILL**  
**YAKIMA, WASHINGTON**  
**2009 INVESTIGATION LOCATIONS**

**LEGEND**

- TP-11 ☒ 2009 TEST PIT LOCATION AND DESIGNATION
- MW-12 ⦿ 2009 MONITORING WELL LOCATION AND DESIGNATION
- GP-5 ⊗ 2009 SOIL VAPOR PROBE LOCATION AND DESIGNATION
- SB-17 ● 2009 SOIL BORING LOCATION AND DESIGNATION
- MW-9 ⦿ PRE-2009 MONITORING WELL LOCATION AND DESIGNATION
- GP-3 ⊗ 2008 SOIL VAPOR PROBE LOCATION AND DESIGNATION
- (NP) NO MUNICIPAL SOLID WASTE PRESENT
- (10.0) APPROXIMATE THICKNESS OF MUNICIPAL SOLID WASTE (FEET)
- 4— ISOPACH CONTOUR LINE (FEET)
- - - - - PROPERTY LINE
- - - - - ESTIMATED LIMITS OF MUNICIPAL SOLID WASTE
- + + + + + RAILROAD TRACKS
- \* \* \* \* \* FENCE



C:\DRIVE\_E\Clients\SLR\001001.0221.0000404-03.dwg, 4/22/2009 6:05:55 PM, BDT

**SLR**  
SLR International Corp

22122 20th AVE SE  
BLDG. H, SUITE 150  
BOTHELL, WA 98021

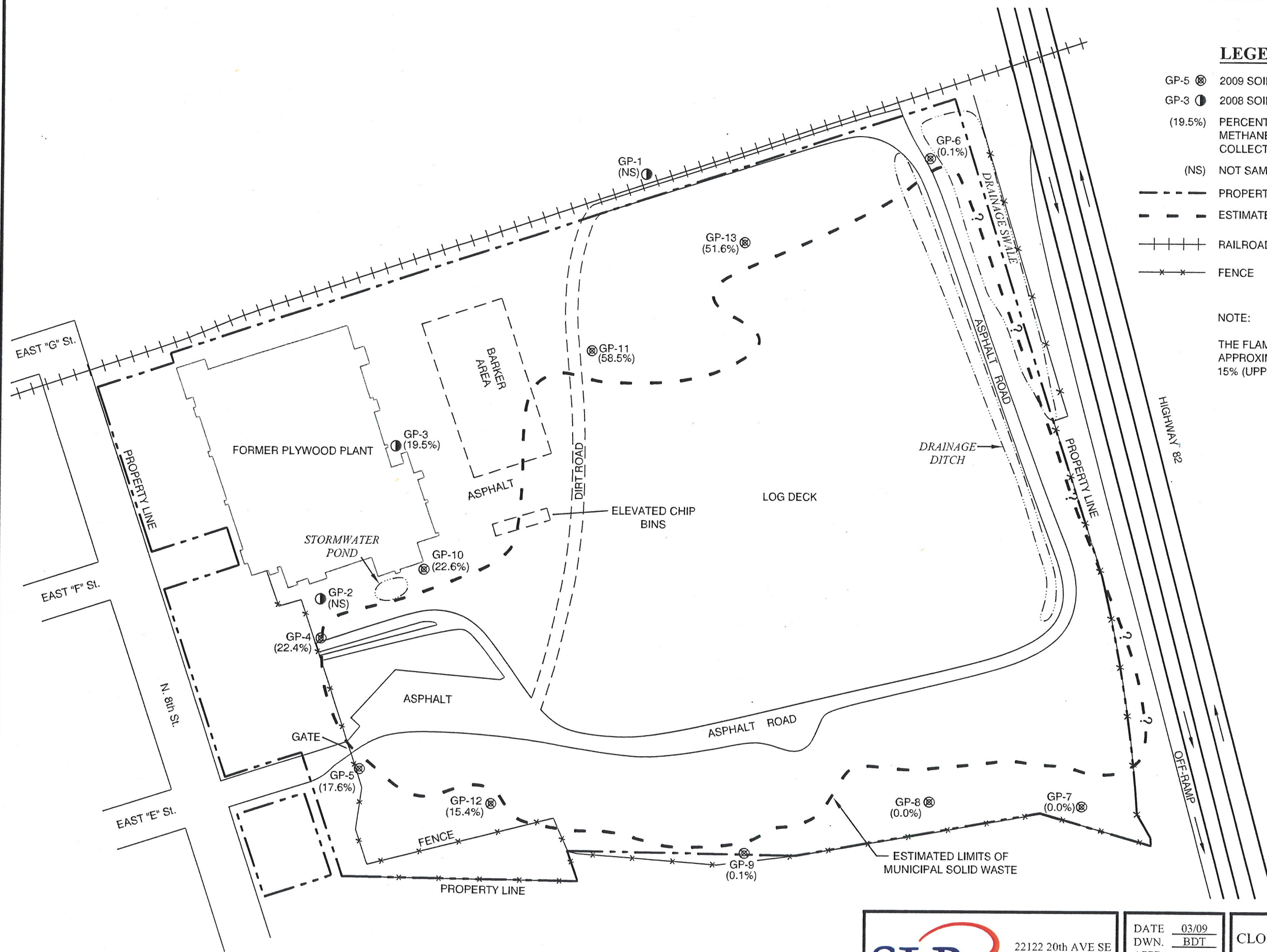
T: 425-402-8800  
F: 425-402-8488

DATE	04/09
DWN.	BDT
APPR.	
REVIS.	
PROJECT NO.	001.0221.00004

**FIGURE 3**  
**CLOSED CITY OF YAKIMA MUNICIPAL LANDFILL**  
**YAKIMA, WASHINGTON**

**MUNICIPAL SOLID WASTE ISOPACH MAP**

C:\DRIVE\_E\Clients\SLR\1001.0221.0000404-04.dwg, 5/2/2009 4:23:36 PM, BDT

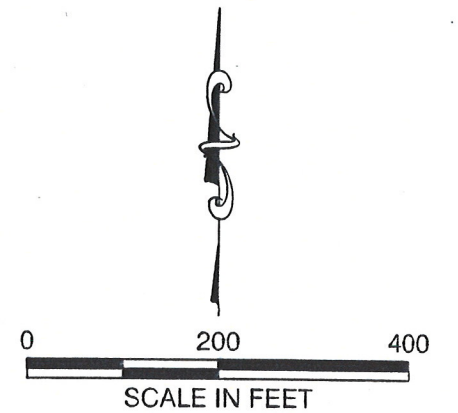


**LEGEND**

- GP-5 (⊗) 2009 SOIL VAPOR PROBE LOCATION AND DESIGNATION
- GP-3 (●) 2008 SOIL VAPOR PROBE LOCATION AND DESIGNATION
- (19.5%) PERCENTAGE OF COMBUSTIBLE GAS (PRESUMABLY METHANE) BY VOLUME IN SOIL VAPOR SAMPLES COLLECTED ON FEBRUARY 25, 2009
- (NS) NOT SAMPLED
- PROPERTY LINE
- - - ESTIMATED LIMITS OF MUNICIPAL SOLID WASTE
- + + + RAILROAD TRACKS
- \* \* \* FENCE

**NOTE:**

THE FLAMMABLE RANGE OF METHANE IS APPROXIMATELY 5% (LOWER EXPLOSIVE LIMIT) TO 15% (UPPER EXPLOSIVE LIMIT) BY VOLUME IN AIR.



**SLR**  
SLR International Corp

22122 20th AVE SE  
BLDG. H, SUITE 150  
BOTHELL, WA 98021

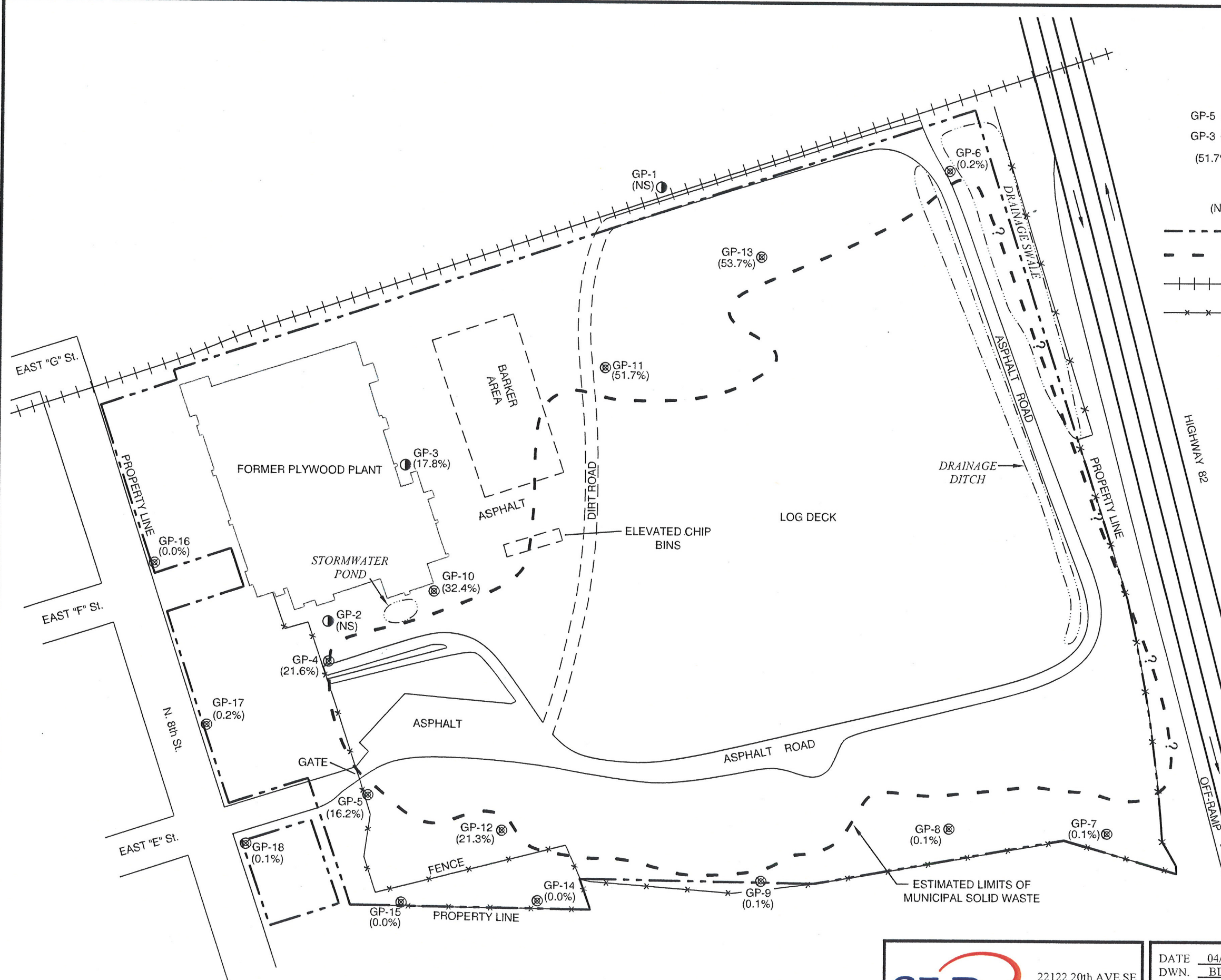
T: 425-402-8800  
F: 425-402-8488

DATE	03/09
DWN.	BDT
APPR.	
REVIS.	
PROJECT NO.	001.0221.00004

**FIGURE 4**  
**CLOSED CITY OF YAKIMA MUNICIPAL LANDFILL**  
**YAKIMA, WASHINGTON**

**COMBUSTIBLE GAS CONCENTRATIONS -**  
**FEBRUARY 25, 2009**

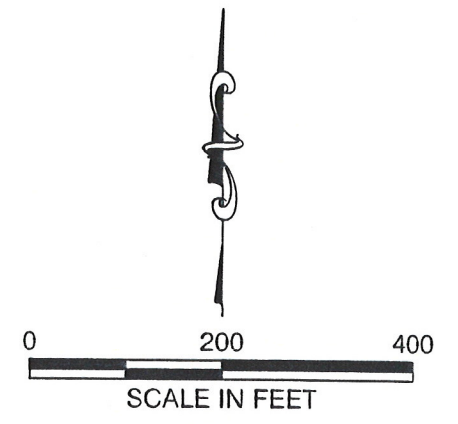
C:\DRIVE\_E\Clients\SLR\001001.0221.0000404.05.dwg, 5/2/2009 4:29:07 PM, BDT



**LEGEND**

- GP-5 (⊗) 2009 SOIL VAPOR PROBE LOCATION AND DESIGNATION
- GP-3 (●) 2008 SOIL VAPOR PROBE LOCATION AND DESIGNATION
- (51.7%) PERCENTAGE OF COMBUSTIBLE GAS (PRESUMABLY METHANE) BY VOLUME IN SOIL VAPOR SAMPLES COLLECTED ON APRIL 17, 2009
- (NS) NOT SAMPLED
- PROPERTY LINE
- - - ESTIMATED LIMITS OF MUNICIPAL SOLID WASTE
- + + + RAILROAD TRACKS
- \* \* \* FENCE

NOTE:  
 THE FLAMMABLE RANGE OF METHANE IS APPROXIMATELY 5% (LOWER EXPLOSIVE LIMIT) TO 15% (UPPER EXPLOSIVE LIMIT) BY VOLUME IN AIR.



**SLR**  
 SLR International Corp  
 22122 20th AVE SE  
 BLDG. H, SUITE 150  
 BOTHELL, WA 98021  
 T: 425-402-8800  
 F: 425-402-8488

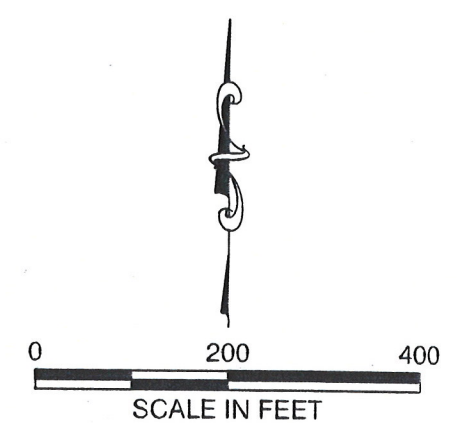
DATE	04/09
DWN.	BDT
APPR.	
REVIS.	
PROJECT NO.	001.0221.00004

**FIGURE 5**  
 CLOSED CITY OF YAKIMA MUNICIPAL LANDFILL  
 YAKIMA, WASHINGTON  
**COMBUSTIBLE GAS CONCENTRATIONS -**  
**APRIL 17, 2009**

C:\DRIVE\E\Clients\SLR\001001.0221.0000404-06.dwg, 4/22/2009 6:03:22 PM, BDT

**LEGEND**

- TP-11 ☒ 2009 TEST PIT LOCATION AND DESIGNATION
- MW-12 ⬤ 2009 MONITORING WELL LOCATION AND DESIGNATION
- GP-5 ⊗ 2009 SOIL VAPOR PROBE LOCATION AND DESIGNATION
- SB-17 ● 2009 SOIL BORING LOCATION AND DESIGNATION
- MW-9 ⊕ 2009 PRE-2009 MONITORING WELL LOCATION AND DESIGNATION
- GP-3 ⊕ 2008 SOIL VAPOR PROBE LOCATION AND DESIGNATION
- PROPERTY LINE
- - - ESTIMATED LIMITS OF MUNICIPAL SOLID WASTE
- +++ RAILROAD TRACKS
- FENCE
- A A' GEOLOGIC CROSS SECTION LOCATION



**SLR**  
SLR International Corp

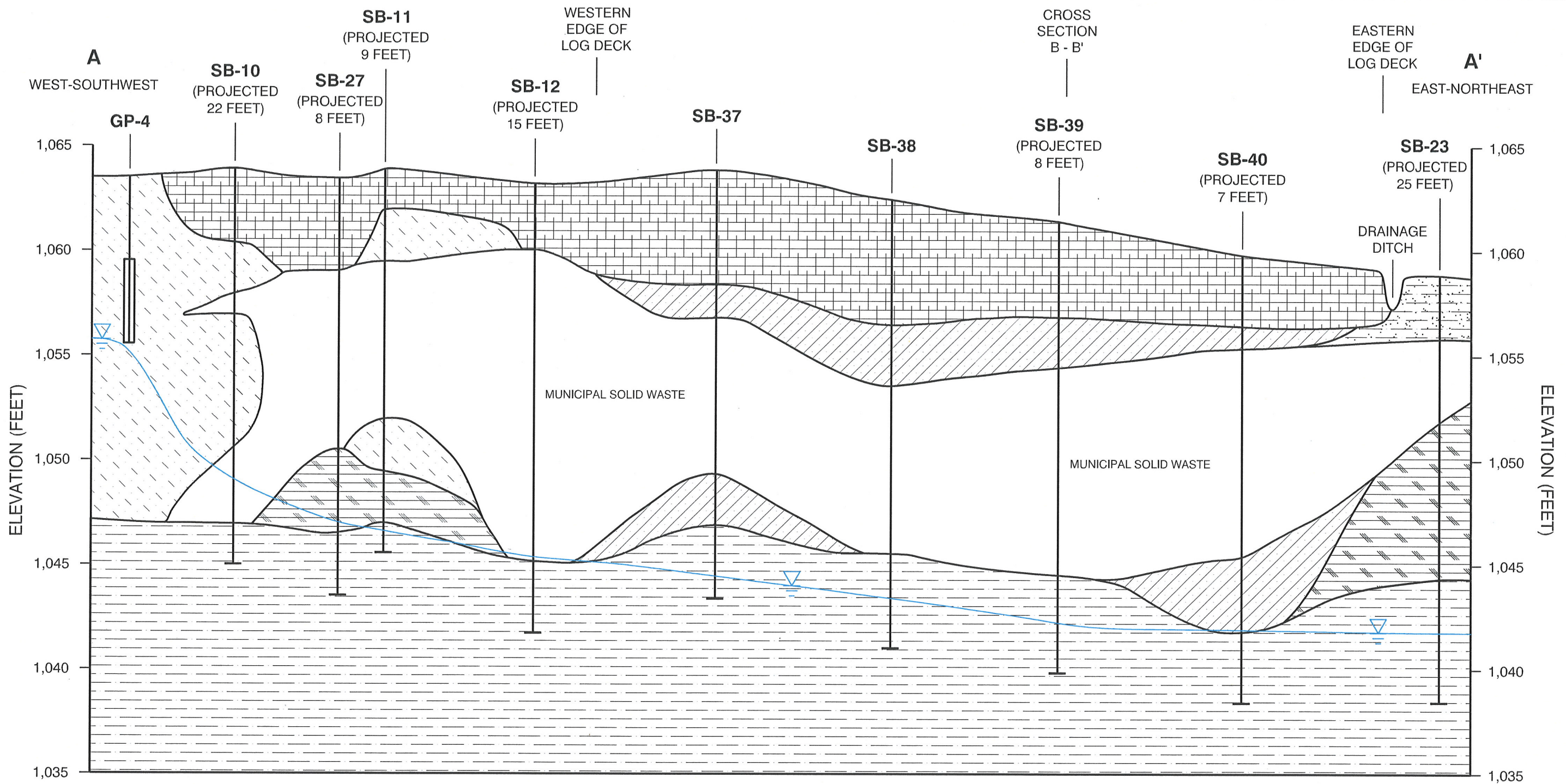
22122 20th AVE SE  
BLDG. H, SUITE 150  
BOTHELL, WA 98021

T: 425-402-8800  
F: 425-402-8488

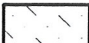
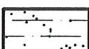

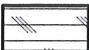
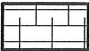

DATE 03/09  
DWN. BDT  
APPR. \_\_\_\_\_  
REVIS. \_\_\_\_\_  
PROJECT NO. 001.0221.00004





**FIGURE 6**  
**CLOSED CITY OF YAKIMA MUNICIPAL LANDFILL**  
**YAKIMA, WASHINGTON**

**LOCATIONS OF GEOLOGIC CROSS SECTIONS**

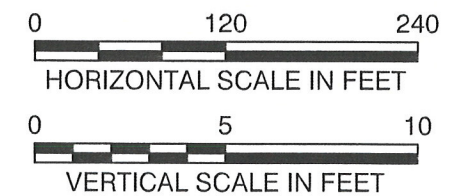


**LEGEND**

-  Silty GRAVEL (GM)
-  Sandy GRAVEL (GW) and Gravelly SAND (SP)
-  Sandy SILT or Gravelly SILT (ML)
-  Silty SAND (SM)
-  WOOD WASTE (WW)
-  MUNICIPAL SOLID WASTE (MSW)

-  INFERRED LITHOLOGIC CONTACT
-  GP-4 EXPLORATION LOCATION AND DESIGNATION
-  SCREEN LOCATION
-  INFERRED GROUNDWATER TABLE SURFACE IN FEBRUARY 2009

- NOTES:
- 1) CROSS SECTION LOCATION IS SHOWN ON FIGURE 6.
  - 2) ELEVATIONS ARE RELATIVE TO NAVD 88 DATUM.



C:\DRIVE\_E\Clients\SLR\001001.0221.00004\04-07.dwg, 9/21/2009 7:29:43 PM, BDT

**SLR**  
SLR International Corp

22122 20th AVE SE  
BLDG. H, SUITE 150  
BOTHELL, WA 98021

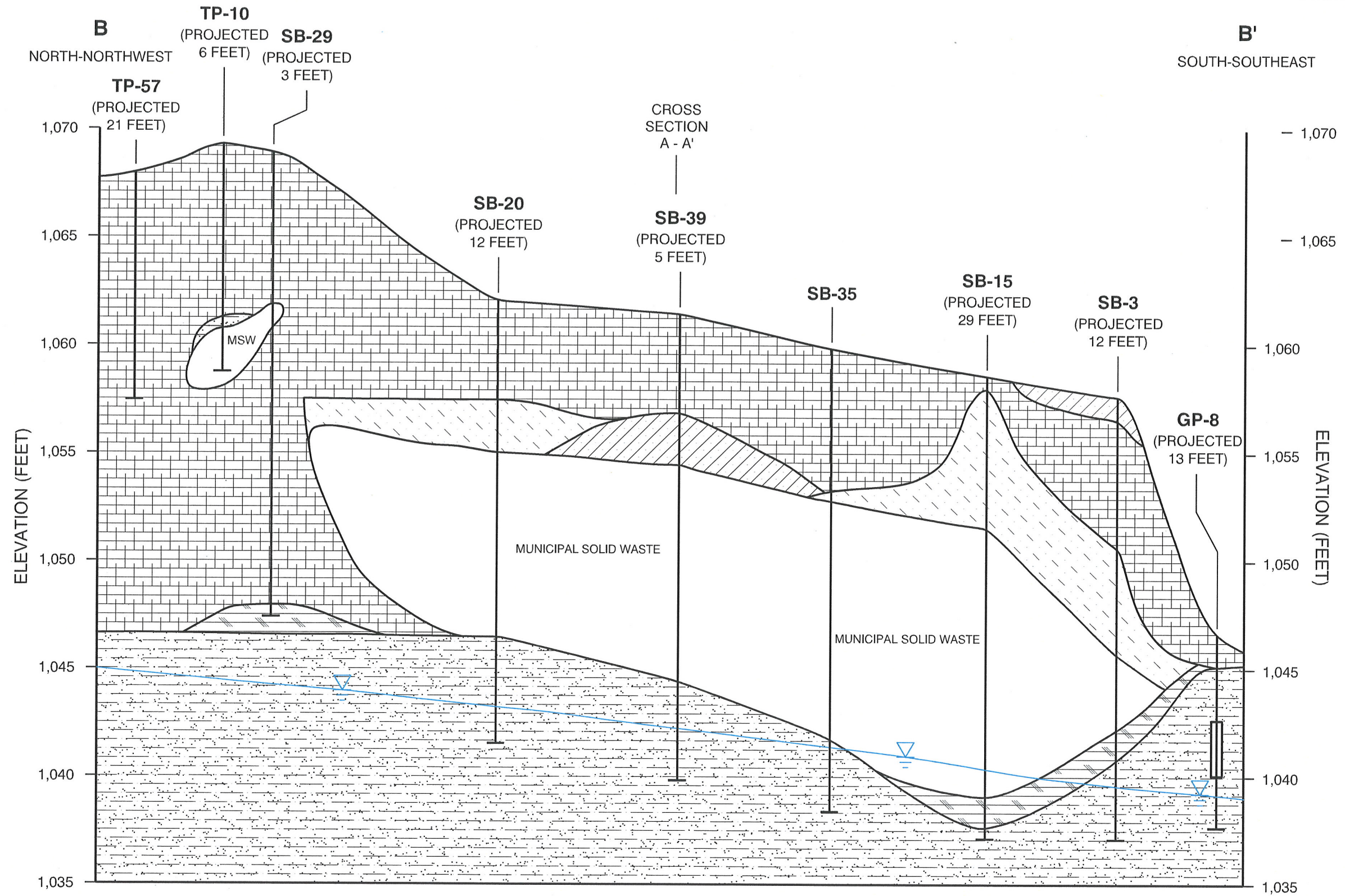
T: 425-402-8800  
F: 425-402-8488

DATE	09/09
DWN.	BDT
APPR.	
REVIS.	
PROJECT NO.	001.0221.00004

**FIGURE 7**  
CLOSED CITY OF YAKIMA MUNICIPAL LANDFILL  
YAKIMA, WASHINGTON

**CROSS SECTION A - A'**



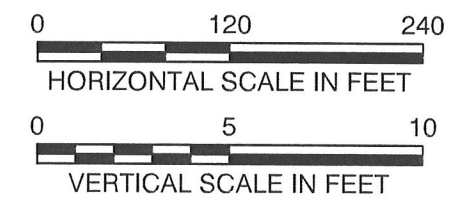


**LEGEND**

- |  |  |  |                             |
|--|--|--|-----------------------------|
|  | Silty GRAVEL (GM)                        |  | Silty SAND (SM)             |
|  | Sandy GRAVEL (GW) AND Gravelly SAND (SP) |  | WOOD WASTE (WW)             |
|  | Sandy SILT or Gravelly SILT (ML)         |  | MUNICIPAL SOLID WASTE (MSW) |

- INFERRED LITHOLOGIC CONTACT
- EXPLORATION LOCATION AND DESIGNATION
- SCREEN LOCATION
- INFERRED GROUNDWATER TABLE SURFACE IN FEBRUARY 2009

- NOTES:**
- CROSS SECTION LOCATION IS SHOWN ON FIGURE 6.
  - ELEVATIONS ARE RELATIVE TO NAVD 88 DATUM.



**SLR**  
SLR International Corp

22122 20th AVE SE  
BLDG. H, SUITE 150  
BOTHELL, WA 98021

T: 425-402-8800  
F: 425-402-8488

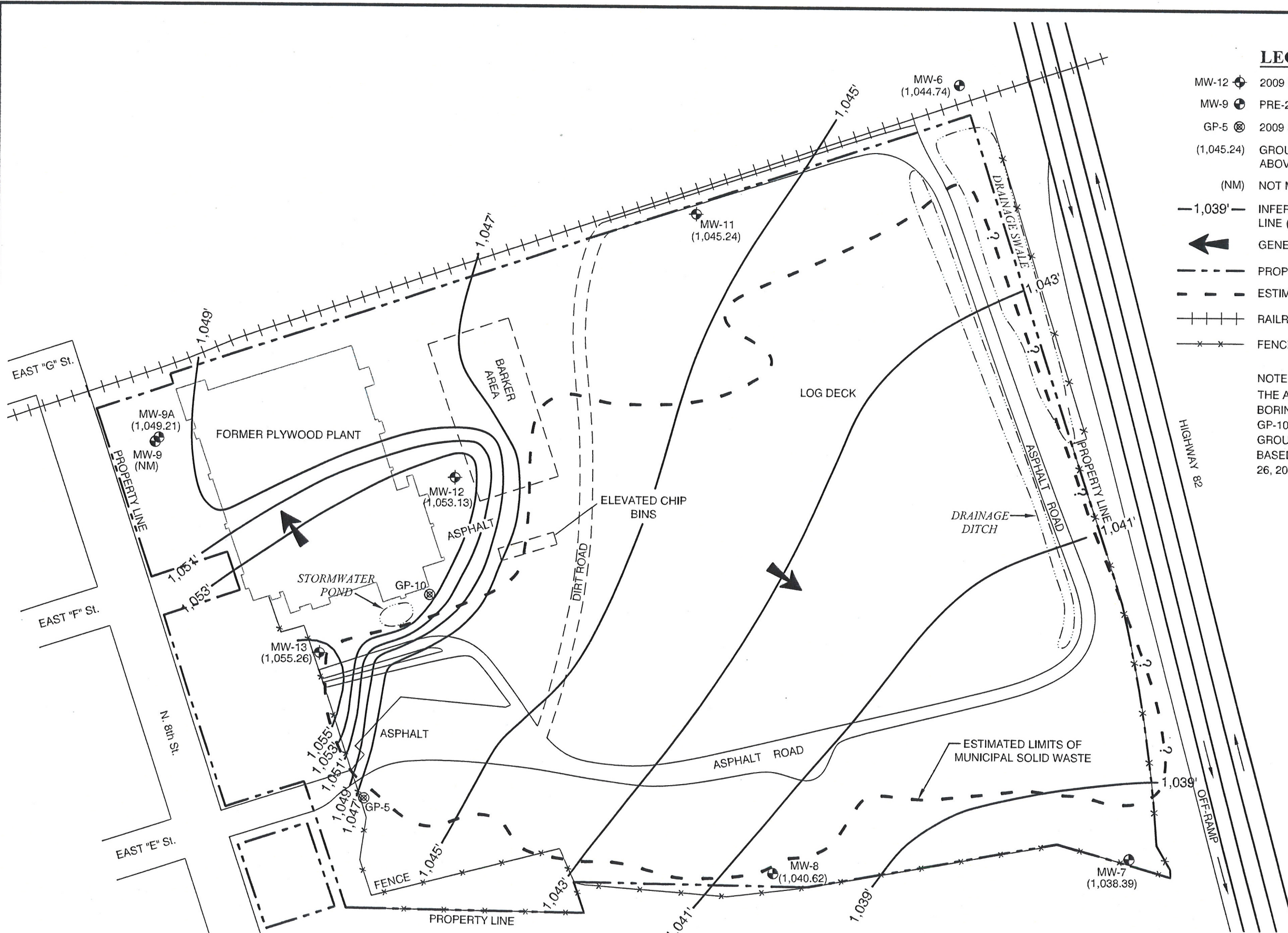
DATE	09/09
DWN.	BDT
APPR.	
REVIS.	
PROJECT NO.	001.0221.00004

**FIGURE 8**  
CLOSED CITY OF YAKIMA MUNICIPAL LANDFILL  
YAKIMA, WASHINGTON

**CROSS SECTION B - B'**

C:\DRIVE\_E\Clients\SLR\001001\_0221\_00004\04-08.dwg, 9/21/2009 7:48:55 PM, BDT

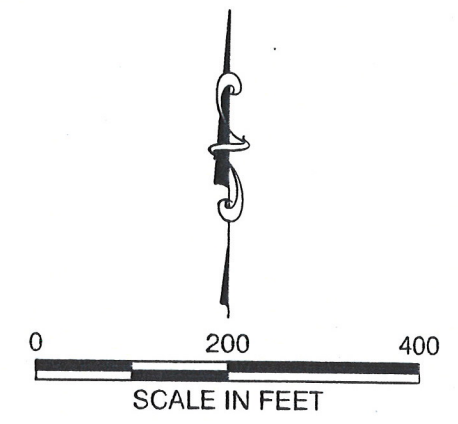
C:\DRIVE\_E\Clients\SLR\001001.0221.0000404-09.dwg, 4/22/2009 6:09:48 PM, BDT



**LEGEND**

- MW-12 2009 MONITORING WELL LOCATION AND DESIGNATION
- MW-9 PRE-2009 MONITORING WELL LOCATION AND DESIGNATION
- GP-5 2009 SOIL VAPOR PROBE LOCATION AND DESIGNATION
- (1,045.24) GROUNDWATER ELEVATION ON FEBRUARY 26, 2009 (FEET ABOVE NAVD 88 DATUM)
- (NM) NOT MEASURED
- 1,039'- INFERRED GROUNDWATER ELEVATION CONTOUR LINE (FEET ABOVE NAVD 88 DATUM)
- GENERAL GROUNDWATER FLOW DIRECTION
- - - - - PROPERTY LINE
- - - - - ESTIMATED LIMITS OF MUNICIPAL SOLID WASTE
- + + + + + RAILROAD TRACKS
- \* \* \* \* \* FENCE

NOTE:  
 THE APPROXIMATE GROUNDWATER ELEVATIONS IN THE BORINGS TO INSTALL SOIL VAPOR PROBES GP-5 AND GP-10 ON FEBRUARY 17 AND 18, 2009, SUPPORT THE GROUNDWATER ELEVATION CONTOUR LINES THAT ARE BASED ON WELL MEASUREMENTS TAKEN ON FEBRUARY 26, 2009.



**SLR**  
 SLR International Corp  
 22122 20th AVE SE  
 BLDG. H, SUITE 150  
 BOTHELL, WA 98021  
 T: 425-402-8800  
 F: 425-402-8488

DATE	04/09
DWN.	BDT
APPR.	
REVIS.	
PROJECT NO.	001.0221.00004

**FIGURE 9**  
 CLOSED CITY OF YAKIMA MUNICIPAL LANDFILL  
 YAKIMA, WASHINGTON  
**GROUNDWATER ELEVATION CONTOUR MAP -**  
**FEBRUARY 26, 2009**