

# IRONDALE IRON & STEEL PLANT



## CONTACTS & INFORMATION

### Comments accepted:

July 21 to August 22, 2016

### Submit comments to:

Steve Teel, Site Manager  
Southwest Regional Office  
PO Box 47775  
Olympia, WA 98504-7775  
(360) 407-6247  
Steve.Teel@ecy.wa.gov

### Document review locations:

#### Jefferson County Public Library

620 Cedar Ave  
Port Hadlock, WA 98339  
(360) 385-6544

#### WA Department of Ecology

##### Southwest Regional Office

300 Desmond Drive SE  
Lacey, WA 98503

By appointment only:

Contact Susie Baxter,  
PublicDisclosureSWRO@ecy.wa.gov  
or (360) 407-6365

### Website:

<https://fortress.wa.gov/ecy/gsp/Sitepage.aspx?csid=4484>

Facility Site ID #: 95275518

Cleanup Site ID #: 4484

## Cleanup Complete!

### Proposed removal from the Hazardous Sites List

Cleanup and habitat restoration are complete at the Irondale Iron & Steel Plant site. The Department of Ecology (Ecology) proposes removing it from the Hazardous Sites List. You are invited to submit comments on the proposed removal from July 21-August 22, 2016.

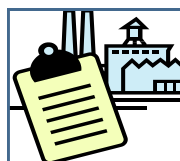
### Cleanup activities (see map on page 3)

To clean up and restore the site, we:

- Removed contaminated sediment and soils
- Removed slag (a byproduct of metal smelting)
- Capped remaining contaminated soil to prevent any further release of the contaminants
- Restored the shoreline habitat
- Made a plan to protect historical features of the site

Soil, groundwater, and surface water tests showed that the cleanup work met Ecology's goals. Since some soil contamination remains on the site, Ecology filed an environmental covenant that restricts land use there. Ecology will conduct periodic reviews every 5 years to be sure the cap that covers the contaminated soil remains effective.

You are invited to review the Cleanup Action and Site Restoration Completion Report for more details about the cleanup. Find review locations in the panel to the left.



### What is the Hazardous Sites List?

The Hazardous Sites List includes sites that Ecology has assessed for their potential threat to human health and the environment. Sites must go through cleanup and meet state standards before Ecology can remove them from the list.



## Site background and cleanup

Iron and steel were periodically produced at the site from 1881 to 1919. Plant operations contaminated some of the site's soil, sediment, and groundwater. Contaminants included arsenic, metals, total petroleum hydrocarbons (TPHs), and carcinogenic polycyclic aromatic hydrocarbons (CPAHs).

Ecology first investigated the site in 2001 and decided that the contaminants did not pose a threat to human health or the environment. A second investigation began in 2005 after a resident found an oily residue on the beach. That investigation ultimately led to cleanup.



New plants in the shoreline restoration

Habitat restoration was an important part of cleanup at the Irondale site. Plants that were damaged or removed during excavation were restored and invasive plants were removed to provide better habitat for fish and other animals. Large logs and tree roots now sit at the high water mark to protect against erosion. New intertidal habitat was also created for fish.



Preserving historical structures

## Archaeological and historic features

The site is part of the Irondale Historic District, which is on the National Register of Historic Places and Washington Heritage Register.

Ecology worked with tribes and state and federal agencies to identify and protect structures of historical significance. A plan is now in place to protect these historical features for the long term.



Ribbon cutting at Irondale Beach Park reopening in 2013

## Partnering for success

Ecology worked with more than ten tribal, federal, state, and county agencies as well as local volunteers to make the Irondale cleanup site, now more commonly known as Irondale Beach Park, a safe place for the people, plants, and animals that use the area.

## Park Information

Matt Tyler, Parks Manager  
Jefferson County  
Parks and Recreation  
623 Sheridan Street  
Port Townsend, WA 98368  
Phone: (360) 385-9129  
mtyler@co.jefferson.wa.us  
[www.countyrec.com](http://www.countyrec.com)

## To be removed from the mailing list:

Contact Megan MacClellan, Public Involvement Coordinator, at [Megan.MacClellan@ecy.wa.gov](mailto:Megan.MacClellan@ecy.wa.gov) or (360) 407-0067.

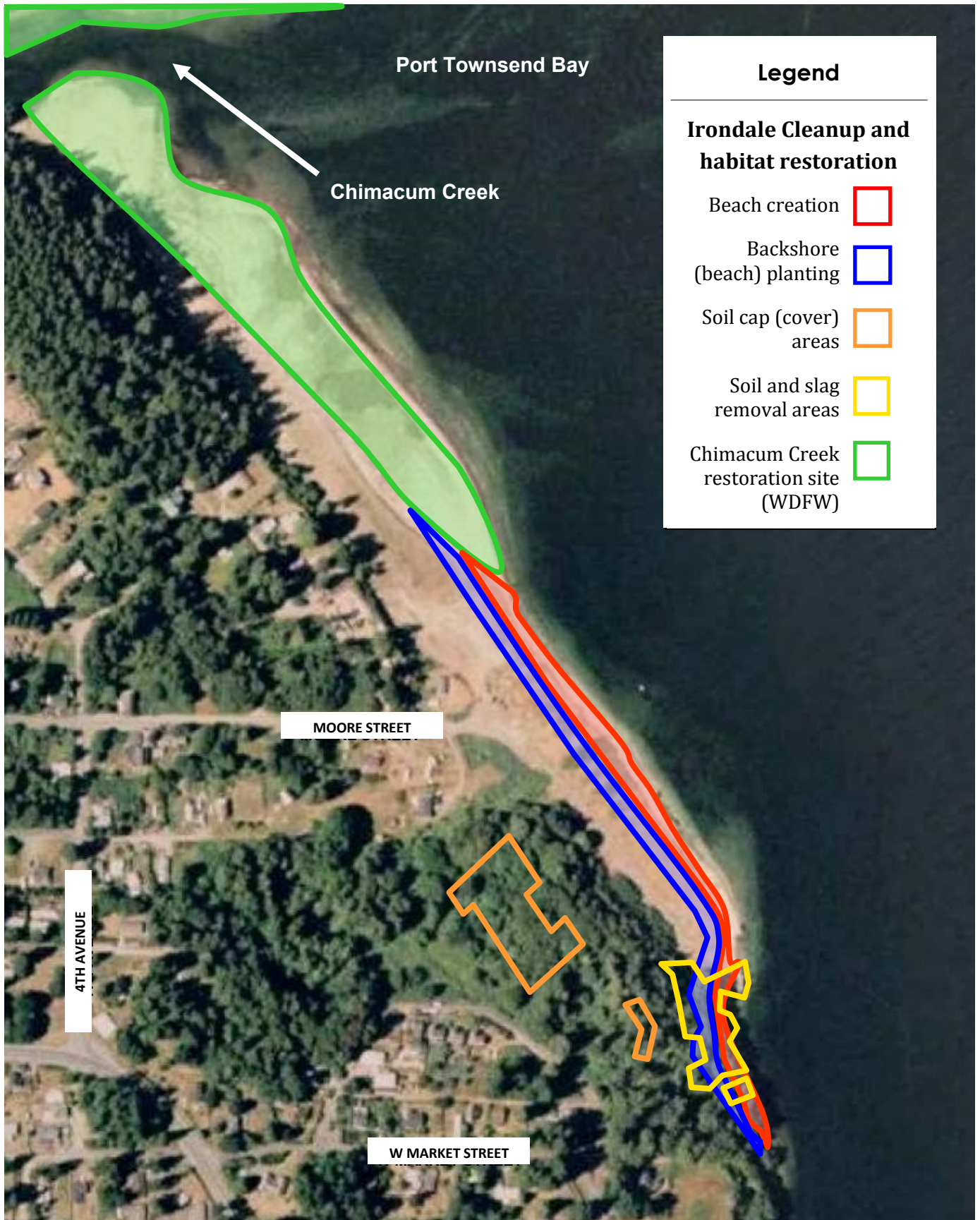
**To request ADA accommodation** for disabilities, or printed materials in a format for the visually impaired, call Ecology at 360-407-6300 or visit <http://www.ecy.wa.gov/accessibility.html>.

Persons with impaired hearing may call Washington Relay Service at 711. Persons with speech disability may call TTY at 877-833-6341.

**¿Habla Español?** Si necesita esta información en español, contáctenos a [preguntas@ecy.wa.gov](mailto:preguntas@ecy.wa.gov).



### Irondale Iron & Steel Plant site map



PO Box 47775

Olympia, WA 98504-7775

## Join the discussion about finishing cleanup at the former Irondale Iron & Steel site!



Ecology seeks public comment on proposed delisting

**Public Comment Period:  
July 21 to August 22, 2016**

**Facility Site ID #: 95275518  
Cleanup Site ID #: 4484**

To request ADA accommodation, including materials in a format for the visually impaired, call Ecology at (360) 407-6300.

Persons with impaired hearing may call Washington Relay Service at 711. Persons with speech disability may call TTY at 877-833-6341.

**¿Habla Español?** Si necesita esta información en español, contáctenos a [preguntas@ecy.wa.gov](mailto:preguntas@ecy.wa.gov).