

## What can I do to improve the health of the river?

### At home:



- **DO** maintain your car to reduce leaks that could get into the storm drain.
- **DO** properly dispose paints, oil and hazardous waste.



- **DO** carpool, ride your bike or use public transit.
- **DO** use natural gardening and lawn care products.



- **DO NOT** dump waste into storm drains.
- **DO NOT** wash your car on the street; wash it on your lawn or at a car wash.

### At your business or workplace:



- **DO** store chemicals and hazardous waste properly.
- **DO** report and clean up spills and leaks.
- **DO** assist inspectors when they visit your facility.



- **DO** dispose hazardous chemicals properly. Contact King County at (206) 263-1650 or the Department of Ecology at (425) 649-7000 to find out how.



- **DO** clean out storm drains and pipes.
- **DO** follow your Stormwater Prevention Plan.
- **DO** contact Environmental Coalition of South Seattle (ECOSS) to learn how your business or workplace can help.

### Want more information?

#### Check out Ecology's website

[http://www.ecy.wa.gov/programs/tcp/sites\\_brochure/lower\\_duwamish/lower\\_duwamish\\_hp.html](http://www.ecy.wa.gov/programs/tcp/sites_brochure/lower_duwamish/lower_duwamish_hp.html)

#### Check out EPA's website

<https://yosemite.epa.gov/r10/cleanup.nsf/sites/lduwamish>

#### Join the listserv

<http://Bit.ly/2b70yBy>



Photo Credit: John Monnat

The Duwamish River looking south towards Mt. Rainier

To request ADA accommodation including materials in a format for the visually impaired, call Ecology at 425-649-7000. Persons with impaired hearing may call Washington Relay Service at 711. Persons with speech disability may call TTY at 877-833-6341.



## Lower Duwamish Waterway Source Control

### Decades of industrial contamination

The Lower Duwamish Waterway (LDW) site is an approximately 5-mile portion of the Lower Duwamish River that flows into Elliott Bay. The waterway's sediments contain a wide range of contaminants due to decades of industrial activity and runoff from urban areas. These contaminants include PCBs (polychlorinated biphenyls), PAHs (polycyclic aromatic hydrocarbons), chlorinated dioxins and furans, arsenic and other metals, pesticides and phthalates.

### Working to control sources of pollution

The Washington State Department of Ecology (Ecology) and the U.S. Environmental Protection Agency (EPA) are working to control sources of pollution in the waterway and clean up contaminated sediments under a legal agreement called an Administrative Order on Consent with the City of Seattle, King County, the Port of Seattle and The Boeing Company.

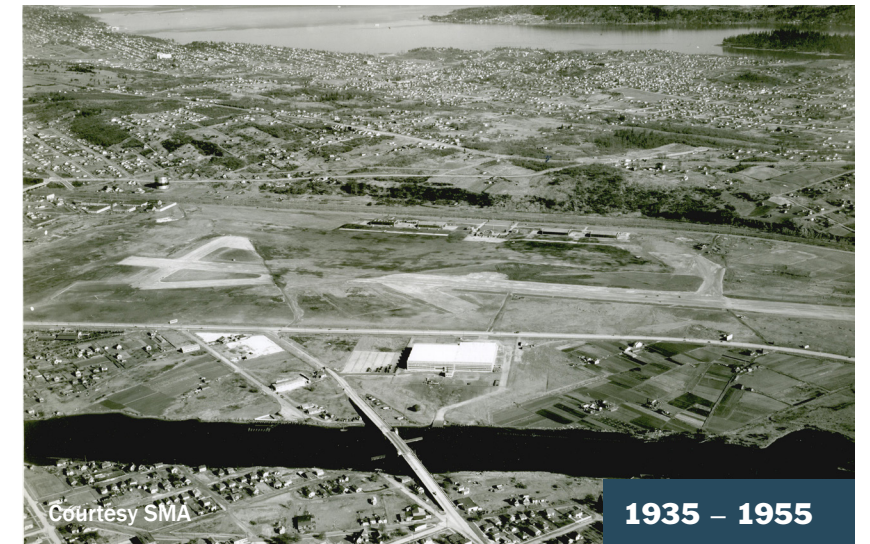
### Ecology and EPA

EPA leads the sediment contamination cleanup for the LDW site with support from Ecology. In 2001, EPA added the LDW site to the Superfund National Priorities List; Ecology added the site to the Washington Hazardous Sites List in 2002. Ecology is leading the efforts to control sources of sediment pollution in the LDW in cooperation with the City of Seattle, King County and EPA. EPA published a Record of Decision (ROD) in November 2014 which presents the selected remedy to cleanup the sediments of the LDW.



Courtesy King County

1955 – Present



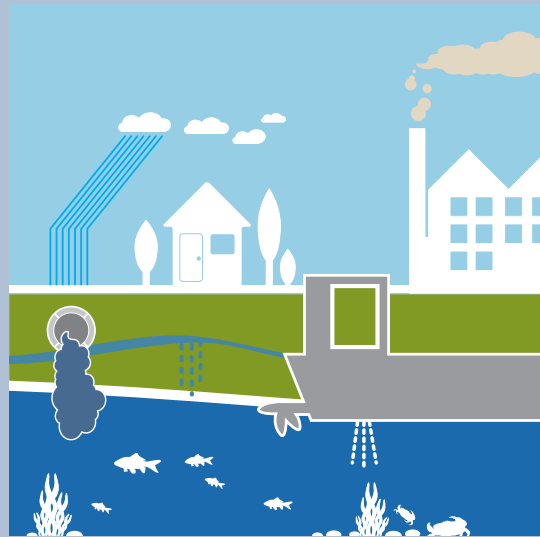
Courtesy SMA

1935 – 1955



Courtesy SMA, 10293

1900 – 1935



## Ecology's plan to manage pollution: Source Control Strategy

Ecology developed the **Lower Duwamish Waterway Source Control Strategy** to coordinate the long-term effort to manage sources of pollution to the river. The strategy outlines the way federal, state and local agencies will work under their various legal authorities. Each agency will set its legal obligations as a regulator or an agency being regulated. The source control work will be coordinated with EPA's superfund sediment cleanup schedule.

**2012:** Ecology published Revised Draft Strategy for controlling solutions.

**2012 – 2015:** Ecology reviewed comments and new information.

**2016:** Ecology published Lower Duwamish Waterway Source Control Strategy.

**Ongoing:** The strategy is a living document and will be revised as needed during sediment cleanup by Ecology.

## What is source control?

Source control is the process of finding and controlling releases of pollution to waterway sediments. This is important in order to prevent pollution before active cleanup begins and prevent sediment recontamination after EPA's cleanup. Finding and controlling sources is difficult. Even with aggressive source control some recontamination may occur.

### Source control activities include:

-  **sampling**
-  **education**
-  **monitoring**
-  **treating stormwater**
-  **investigating**
-  **coordination among agencies**
-  **cleanup**
-  **enforcing regulations**
-  **management practices that prevent pollution**

## What are other agencies doing for source control?

Ecology has asked the primary public agencies involved in controlling sources to provide an Implementation Plan that describes how that agency conducts its source control work.

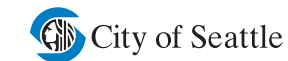
These plans are unique and will include a:

- Description of how each agency conducts its various programs to address source control for the LDW source area.
- Set of each agency's priorities for source control on a near-term (5-year) and long-term basis.
- Description of coordination within the agency and interagency coordination through the Source Control Work Group.

Implementation Plans will be made available on Ecology's website when they are finalized.

## What agencies are involved?

Ecology leads the interagency Source Control Work Group (SCWG). The SCWG shares information, discusses strategy, develops action plans, implements source control measures and tracks progress. The SCWG includes Ecology, the City of Seattle, King County, Port of Seattle, City of Tukwila, Washington State Department of Transportation, Puget Sound Clean Air Agency and EPA.



## What is being done to control sources of pollution?

### Studies

Ecology conducts research to find pollutants in air, water, soil and consumer products, then proposes solutions.



### Business inspections

Ecology, City of Seattle and King County coordinate business inspections. The Port of Seattle also conducts tenant inspections.



### Monitoring

Ecology uses data from various studies to track the levels and movement of pollution.



### Contaminated site cleanup

Ecology and the Environmental Protection Agency (EPA) oversee cleanup at sites near the river.



### Education and outreach

Ecology and partners educate the public about ways to reduce pollution.



### Source tracing

City of Seattle, King County and Ecology sample solids from catch basins, storm drains and waste.



### Permitting

Ecology issues permits for water quality and managing hazardous waste.



To learn more about the 2016 Source Control Strategy, please visit Ecology's website.

[www.ecy.wa.gov/programs/tcp/sites\\_brochure/lower\\_duwamish/lower\\_duwamish\\_hp.html](http://www.ecy.wa.gov/programs/tcp/sites_brochure/lower_duwamish/lower_duwamish_hp.html)