

Mr. Paul Herschell
Herschell Management Company
PO Box 820623
Vancouver, Washington 98682

Thursday, August 25, 2016

RE: Groundwater Monitoring Event-August 2016

**WDOE VCP Facility #SW0471
Padden Industrial Park
4601 NE 78th Street
Vancouver, Washington**

Point Source Report WA160720-3

Dear Mr. Herschell,

At your request, Point Source Solutions (Point Source) has conducted groundwater monitoring of an existing resource protection well (MW-9B) in the Padden Industrial Park located at 4601 NE 78th Street, Vancouver, Washington (Property).

The Property is identified on a site location map, site plan and topographic map, all of which are located in the Figures attached to this report.

As summarized in the June 4, 2007 NFA Determination Letter, the Washington Department of Ecology (WDOE) issued an NFA finding for the Property based on historic environmental assessment reports and a Long Term Monitoring Plan submitted by 3 Kings Environmental on December 16, 2006. In order to maintain the NFA, WDOE requested continued monitoring on an approximate 20-month interval for five years (i.e., through 2012).

The long-term monitoring included the gauging and sampling of onsite monitoring well MW-9B for diesel-range petroleum hydrocarbons (TPH-Dx), Benzene/Toluene/Ethylbenzene/Xylenes (BTEX) and polychlorinated bipenyls (PCBs). Sampling events and subsequent laboratory analysis for this particular well were completed in October 2007, August 2009, April 2011, March 2013 and September 2014.

Concentrations of dissolved petroleum hydrocarbons appeared to indicate an increasing trend in 2014, therefore continued long-term monitoring associated with monitoring well MW-9B was requested to be continued on a bi-annual basis (i.e., every two years). The initial bi-annual sampling event was scheduled for August 2016.

BACKGROUND

The Property was initially developed in the 1950s as a metal salvage and scrap yard business, identified as Cliff Kappe Metals. This business operated continuously until approximately 1976. Based on aerial photograph review, business activity was concentrated on the western portion of the Property, while the eastern portion saw little use. Heuvel Enterprises LLC purchased the Property in the early 1980s, then leased the Property to an automobile towing company until the late 1980s. The Property was then vacated from the late 1980s until sometime in 2002, when development of the current multi-tenant commercial facility was initiated.

In December 2002 during site development, 3 Kings completed assessment activities associated with surface soil. Soil samples collected from the vicinity of the onsite storm water management system indicated the presence of TPH-Dx as heavy oil and PCBs at levels which exceed WDOE Model Toxics Control Act (MTCA) Method A Cleanup Levels, while TPH-Dx as diesel, Volatile Organic Compounds (VOCs) and Toxicity Characteristic Leaching Procedure (TCLP) for heavy metals were not identified at levels which exceed applicable cleanup standards.

In January 2003, 3 Kings returned to the Property to remove a total of 13.83 tons of soil which was found to exceed the WDOE MTCA Method A cleanup standard for PCBs. This impacted soil was excavated and transported to Hillsboro Landfill in Hillsboro, Oregon for disposal. Confirmation soil samples collected from the exposed sidewalls and base of the excavation exhibited concentrations of TPH-Dx and PCBs at levels which were below MTCA Method A cleanup standards for Industrial Receptors.

In January 2003, 3 Kings collected a single groundwater sample from monitoring well MW-9B. This well was identified within the boundaries of the Property, although it was installed to monitor contaminants associated with the BOC Gases and Boomsnub properties which reportedly migrated toward the Property. PCBs were not detected in the sample collected from monitoring well MW-9B.

On March 10, 2003, WDOE prepared a letter stating that an Institutional Control (IC) would be required to facilitate project file closure, as impacted soil above cleanup standards remained onsite. In addition, a long-term groundwater monitoring program was established to evaluate shallow groundwater beneath the Property for TPH-Dx, PCBs and BTEX. WDOE required the completion of groundwater monitoring associated with onsite well MW-9B for two years at six month intervals.

On December 16, 2006, 3 Kings submitted a Long-Term Monitoring Plan on behalf of Heuvel Enterprises LLC, which laid out a five-year sampling plan for groundwater at the Property. Sample events associated with monitoring well MW-9B were recommended to continue at approximate 20-month intervals. The sample collected from monitoring well MW-9B would be analyzed for TPH-Dx, BTEX and PCBs. Sampling events were tentatively scheduled for January 2007, September 2008, May 2010 and January 2012.

On June 4, 2007, WDOE issued a No Further Action (NFA) Determination for the Property, based on continued long-term monitoring with acceptable concentrations of TPH-Dx, BTEX and PCBs.

GROUNDWATER MONITORING EVENT – AUGUST 2016

On October 12, 2016, Jeffrey Wilson of Point Source collected a representative groundwater sample from monitoring well MW-9B. Prior to purging and sampling the static water level elevation was measured to be 21.06 feet below top of casing (TOC) using an electronic water level meter. MW-9B was purged and sampled using a peristaltic pump with dedicated polyethylene tubing. Well purging was considered complete when approximately three casing volumes of water were removed from the well. Point Source purged approximately 65 gallons of water from MW-9B.

The groundwater sample was collected with the peristaltic pump operated at a reduced flow (<0.1 gallons per minute). The sample was collected in laboratory-supplied glassware, labeled and placed in a cooler with ice and subsequently transported under chain-of-custody to Apex Labs of Tigard, Oregon for analysis by NWTPH-Dx, EPA Method 8260B (BTEX) and EPA Method 8280A (PCBs).

DATA ANALYSIS & INTERPRETATION

Analysis and interpretation of the data generated during the field activities for the sampling event are presented in the following sections. Where appropriate, the results are compared with regulatory limits for the contaminants of concern.

Groundwater Sampling Results

A summary of sampling information and laboratory analytical results for the sampling event are provided in Table 1.

Copies of the laboratory analytical report from the sampling event are provided in Appendix A.

TABLE 1- MW-9B GROUNDWATER					
LABORATORY ANALYTICAL RESULTS –TPH-DX/BTEX/PCBS (UG/L)					
SAMPLE #	DATE	STATIC H2O LEVEL TOC	NWTPH - DX/HO	BTEX EPA 8260B	PCBs EPA 8280A
MW-9B**	October 2007	34.08 feet	Not Detected	Not Detected	Not Detected
MW-9B**	August 2009	24.82 feet	Not Detected	Not Sampled	Not Detected
MW-9B**	April 2011	17.74 feet	Not Detected	Not Detected	Not Detected
MW-9B**	March 2013	19.08 feet	Dx – 136 Oil – 230	Not Detected	Not Detected
MW-9B**	September 2014	22.50 feet	Dx – 279 Oil – 864	Not Detected	Not Detected
MW-9B-8/4/16	August 2016	22.50 feet	Not Detected	Not Detected	Not Detected
MTCA Method A Unrestricted Land Use Cleanup Level			Dx – 500 Oil – 500	Benzene – 5 Toluene – 1,000 Ethylbenzene – 700 Xylene – 1,000	PCB – 0.1

Notes:

Analytical results depicted in **BOLD** are in excess of the relevant regulatory cleanup concentration.

** Denotes samples collected by 3 Kings Environmental, Inc.

Cleanup criteria for compounds noted in Table 2 are established in Table 720-1 – Washington Department of Ecology Model Toxics Control Act Groundwater Cleanup Levels for Unrestricted Land Use.

Quality Assurance/Quality Control Review

Laboratory QA/QC measures were performed through data validation of available analytical data generated as part of these sampling events. Data validation considered the following:

- Method Detection and/or Reporting Limits
- Laboratory Matrix Blanks
- Sample Holding Times
- Surrogate and Matrix Spike Recoveries, and
- Laboratory Duplicate Analysis Results

Apex Labs did not report qualifiers that would indicate problems with the sample results. According to the lab reports all analyses were performed with the appropriate Batch QC (including Sample Duplicates, Matrix Spikes and/or Matrix Spike Duplicates) in order to meet or exceed method and regulatory requirements. Exceptions are qualified in the analytical report. In cases where there is insufficient sample material provided for Sample Duplicates and/or Matrix Spikes, a Lab Control Sample Duplicate (LCS Dup) is analyzed to demonstrate accuracy and precision of the extraction and analysis.

SUMMARY AND CONCLUSIONS

Based on the results of this quarterly sampling event, the following conclusions have been developed:

- Analytical data from the groundwater sample collected from MW-9B did not disclose the presence of any of the contaminants of concern including TPH-Dx, BTEX and PCBs.
- The next groundwater monitoring event is scheduled for August 2018.

Point Source appreciates the opportunity to provide these services. If you have any questions concerning this report, or if we can assist you in any other matter, please contact Gil Cobb at 503.916.9254.



Gil Cobb
Licensed Geologist/Hydrogeologist (Washington #1594)



Point Source Solutions, LLC
10445 SW Canyon Road, Suite 115
Beaverton, Oregon 97005

Office: 503.236.5885
Mobile: 503.916.9254
Fax: 503.224.0449

www.pointsourcesolutions.com

Attachments:

Figure 1 - Site Location Map

Figure 2 - Topographic Map

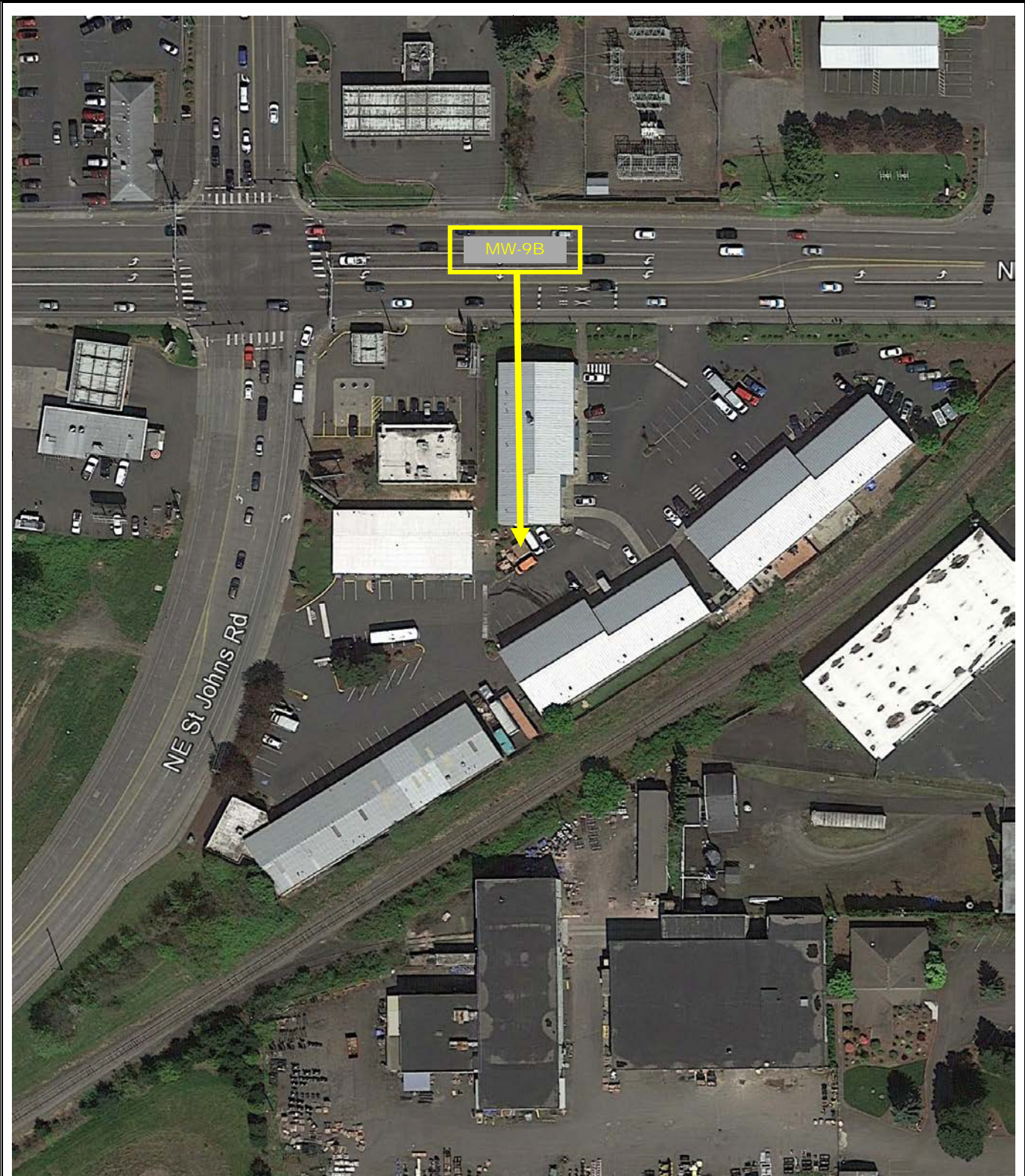
Figure 3 - Site Plan

Appendix A – Analytical Results

Appendix B – Qualifications

FIGURES

**SITE LOCATION MAP
SITE PLAN
SITE TOPOGRAPHIC MAP**



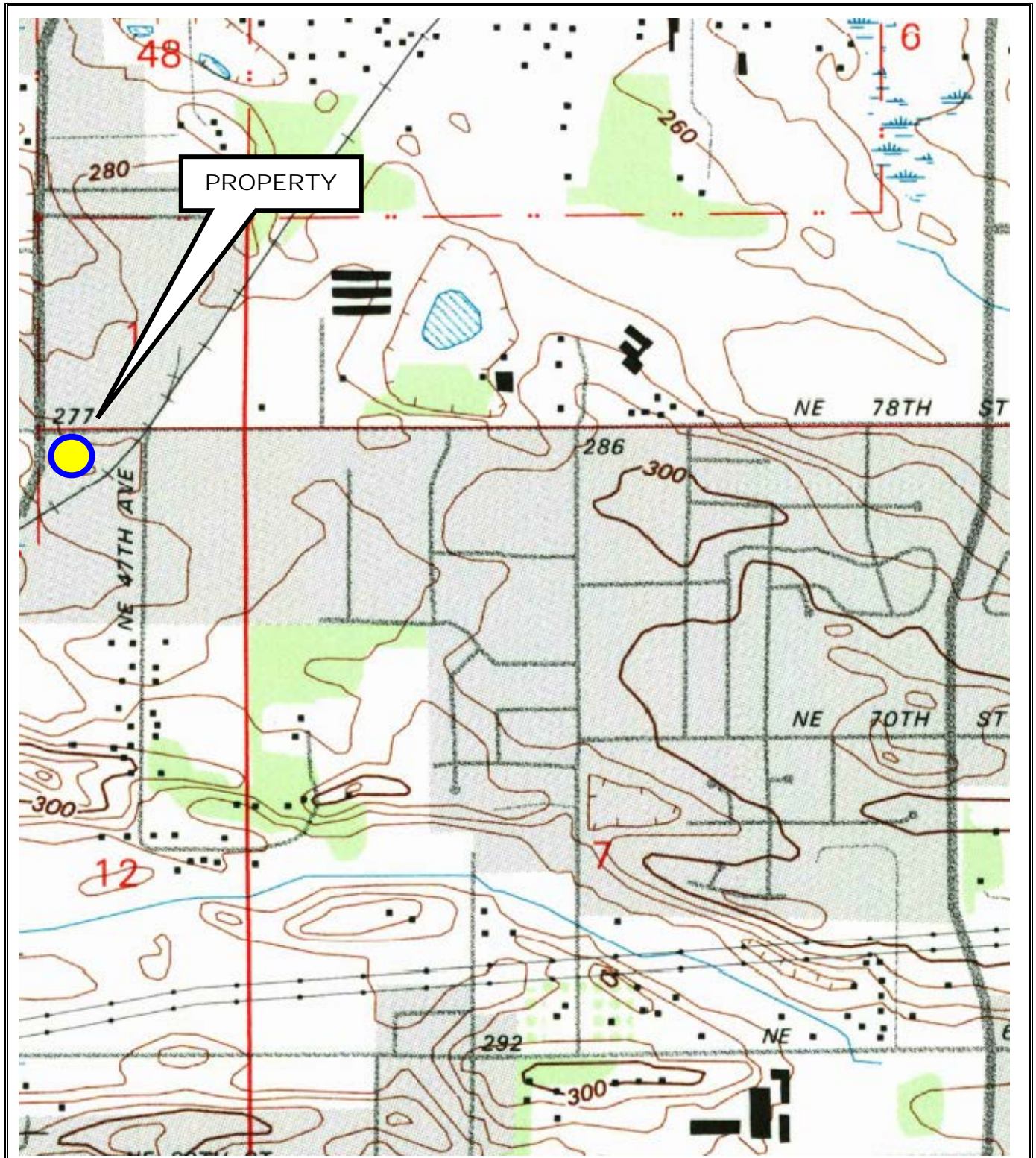
SITE PLAN

From Google Earth 2015



Site Name: Padden Industrial Park
4601 NE 78th Street
Vancouver, Washington

Project Number: WA160720-3



TOPOGRAPHIC MAP

DRAWING NOT TO SCALE

Source: USGS 7.5 Minute Topographic Map
Orchards, WA Quadrangle 1990



Site Name: Padden Industrial Park
4601 NE 78th Street
Vancouver, Washington

Project Number: WA160720-3

APPENDIX A
ANALYTICAL REPORT

Apex Labs

12232 S.W. Garden Place
Tigard, OR 97223
503-718-2323 Phone
503-718-0333 Fax

Monday, August 22, 2016

Gil Cobb
Point Source Solutions, LLC
10445 SW Canyon Road Suite 115
Beaverton, OR 97005

RE: General 2016 / Padden Ind. Park/WA160720-3

Enclosed are the results of analyses for work order A6H0181, which was received by the laboratory on 8/4/2016 at 1:33:00PM.

Thank you for using Apex Labs. We appreciate your business and strive to provide the highest quality services to the environmental industry.

If you have any questions concerning this report or the services we offer, please feel free to contact me by email at: DAuvil@apex-labs.com, or by phone at 503-718-2323.

Apex Laboratories



The results in this report apply to the samples analyzed in accordance with the chain of custody document. This analytical report must be reproduced in its entirety.

Darrell Auvil, Project Manager

Point Source Solutions, LLC
10445 SW Canyon Road Suite 115
Beaverton, OR 97005

Project: **General 2016**
Project Number: Padden Ind. Park/WA160720
Project Manager: Gil Cobb

Reported:
08/22/16 16:52

ANALYTICAL REPORT FOR SAMPLES

SAMPLE INFORMATION

Sample ID	Laboratory ID	Matrix	Date Sampled	Date Received
MW-9B-8/4/16	A6H0181-01	Water	08/04/16 12:14	08/04/16 13:33

Apex Laboratories



The results in this report apply to the samples analyzed in accordance with the chain of custody document. This analytical report must be reproduced in its entirety.

Darrell Auvil, Project Manager

Point Source Solutions, LLC
 10445 SW Canyon Road Suite 115
 Beaverton, OR 97005

Project: **General 2016**
 Project Number: Padden Ind. Park/WA160720
 Project Manager: Gil Cobb

Reported:
 08/22/16 16:52

ANALYTICAL SAMPLE RESULTS

Diesel and/or Oil Hydrocarbons by NWTPH-Dx

Analyte	Result	MDL	Reporting		Dilution	Date Analyzed	Method	Notes
			Limit	Units				
MW-9B-8/4/16 (A6H0181-01)			Matrix: Water		Batch: 6080195			
Diesel	ND	---	204	ug/L	1	08/05/16 21:54	NWTPH-Dx	
Oil	ND	---	408	"	"	"	"	
<i>Surrogate: o-Terphenyl (Surr)</i>			<i>Recovery: 102 %</i>	<i>Limits: 50-150 %</i>	"	"	"	

Apex Laboratories



Darrell Auvil, Project Manager

The results in this report apply to the samples analyzed in accordance with the chain of custody document. This analytical report must be reproduced in its entirety.

Point Source Solutions, LLC
 10445 SW Canyon Road Suite 115
 Beaverton, OR 97005

Project: **General 2016**
 Project Number: Padden Ind. Park/WA160720
 Project Manager: Gil Cobb

Reported:
 08/22/16 16:52

ANALYTICAL SAMPLE RESULTS

BTEX Compounds by EPA 8260B

Analyte	Result	MDL	Reporting		Dilution	Date Analyzed	Method	Notes
			Limit	Units				
MW-9B-8/4/16 (A6H0181-01)			Matrix: Water		Batch: 6080184			
Benzene	ND	---	0.200	ug/L	1	08/05/16 14:49	EPA 8260B	
Toluene	ND	---	1.00	"	"	"	"	
Ethylbenzene	ND	---	0.500	"	"	"	"	
Xylenes, total	ND	---	1.50	"	"	"	"	
<i>Surrogate: 1,4-Difluorobenzene (Surr)</i>			<i>Recovery: 103 %</i>	<i>Limits: 80-120 %</i>	"	"	"	
<i>Toluene-d8 (Surr)</i>			<i>101 %</i>	<i>Limits: 80-120 %</i>	"	"	"	
<i>4-Bromofluorobenzene (Surr)</i>			<i>101 %</i>	<i>Limits: 80-120 %</i>	"	"	"	

Apex Laboratories



The results in this report apply to the samples analyzed in accordance with the chain of custody document. This analytical report must be reproduced in its entirety.

Darrell Auvil, Project Manager

Point Source Solutions, LLC
 10445 SW Canyon Road Suite 115
 Beaverton, OR 97005

Project: **General 2016**
 Project Number: Padden Ind. Park/WA160720
 Project Manager: Gil Cobb

Reported:
 08/22/16 16:52

ANALYTICAL SAMPLE RESULTS

Polychlorinated Biphenyls by EPA 8082A

Analyte	Result	MDL	Reporting Limit	Units	Dilution	Date Analyzed	Method	Notes
MW-9B-8/4/16 (A6H0181-01)			Matrix: Water		Batch: 6080257			C-07
Aroclor 1016	ND	---	0.101	ug/L	1	08/09/16 12:39	EPA 8082A	
Aroclor 1221	ND	---	0.101	"	"	"	"	
Aroclor 1232	ND	---	0.101	"	"	"	"	
Aroclor 1242	ND	---	0.101	"	"	"	"	
Aroclor 1248	ND	---	0.101	"	"	"	"	
Aroclor 1254	ND	---	0.101	"	"	"	"	
Aroclor 1260	ND	---	0.101	"	"	"	"	
<i>Surrogate: Decachlorobiphenyl (Surr)</i>			<i>Recovery: 82 %</i>	<i>Limits: 58-120 %</i>	"	"	"	

Apex Laboratories



The results in this report apply to the samples analyzed in accordance with the chain of custody document. This analytical report must be reproduced in its entirety.

Darrell Auvil, Project Manager

Point Source Solutions, LLC
 10445 SW Canyon Road Suite 115
 Beaverton, OR 97005

Project: **General 2016**
 Project Number: Padden Ind. Park/WA160720
 Project Manager: Gil Cobb

Reported:
 08/22/16 16:52

QUALITY CONTROL (QC) SAMPLE RESULTS

Diesel and/or Oil Hydrocarbons by NWTPH-Dx

Analyte	Result	MDL	Reporting Limit	Units	Dil.	Spike Amount	Source Result	%REC	%REC Limits	RPD	RPD Limit	Notes
Batch 6080195 - EPA 3510C (Fuels/Acid Ext.)						Water						
Blank (6080195-BLK1)						Prepared: 08/05/16 14:01 Analyzed: 08/05/16 20:54						
NWTPH-Dx												
Diesel	ND	---	200	ug/L	1	---	---	---	---	---	---	
Oil	ND	---	400	"	"	---	---	---	---	---	---	
<i>Surr: o-Terphenyl (Surr)</i>		<i>Recovery: 100 %</i>		<i>Limits: 50-150 %</i>		<i>Dilution: 1x</i>						
LCS (6080195-BS1)						Prepared: 08/05/16 14:01 Analyzed: 08/05/16 21:14						
NWTPH-Dx												
Diesel	1240	---	200	ug/L	1	1250	---	99	58-115%	---	---	
<i>Surr: o-Terphenyl (Surr)</i>		<i>Recovery: 102 %</i>		<i>Limits: 50-150 %</i>		<i>Dilution: 1x</i>						
LCS Dup (6080195-BSD1)						Prepared: 08/05/16 14:01 Analyzed: 08/05/16 21:34						
NWTPH-Dx												
Diesel	1280	---	200	ug/L	1	1250	---	102	58-115%	3	20%	Q-19
<i>Surr: o-Terphenyl (Surr)</i>		<i>Recovery: 104 %</i>		<i>Limits: 50-150 %</i>		<i>Dilution: 1x</i>						



Point Source Solutions, LLC
10445 SW Canyon Road Suite 115
Beaverton, OR 97005

Project: **General 2016**
Project Number: Padden Ind. Park/WA160720
Project Manager: Gil Cobb

Reported:
08/22/16 16:52

QUALITY CONTROL (QC) SAMPLE RESULTS

BTEX Compounds by EPA 8260B

Analyte	Result	MDL	Reporting Limit	Units	Dil.	Spike Amount	Source Result	%REC	%REC Limits	RPD	RPD Limit	Notes
Batch 6080184 - EPA 5030B						Water						
Blank (6080184-BLK1)						Prepared: 08/05/16 10:39 Analyzed: 08/05/16 12:58						
EPA 8260B												
Benzene	ND	---	0.200	ug/L	1	---	---	---	---	---	---	---
Toluene	ND	---	1.00	"	"	---	---	---	---	---	---	---
Ethylbenzene	ND	---	0.500	"	"	---	---	---	---	---	---	---
Xylenes, total	ND	---	1.50	"	"	---	---	---	---	---	---	---

Surr: 1,4-Difluorobenzene (Surr) Recovery: 102 % Limits: 80-120 % Dilution: 1x
Toluene-d8 (Surr) 101 % 80-120 % "
4-Bromofluorobenzene (Surr) 101 % 80-120 % "

LCS (6080184-BS1) Prepared: 08/05/16 10:39 Analyzed: 08/05/16 12:02

EPA 8260B												
Benzene	21.7	---	0.200	ug/L	1	20.0	---	109	70-130%	---	---	---
Toluene	21.1	---	1.00	"	"	"	---	106	"	---	---	---
Ethylbenzene	21.6	---	0.500	"	"	"	---	108	"	---	---	---
Xylenes, total	67.3	---	1.50	"	"	60.0	---	112	"	---	---	---

Surr: 1,4-Difluorobenzene (Surr) Recovery: 100 % Limits: 80-120 % Dilution: 1x
Toluene-d8 (Surr) 100 % 80-120 % "
4-Bromofluorobenzene (Surr) 98 % 80-120 % "

Duplicate (6080184-DUP1) Prepared: 08/05/16 12:13 Analyzed: 08/05/16 15:17

QC Source Sample: MW-9B-8/4/16 (A6H0181-01)

EPA 8260B												
Benzene	ND	---	0.200	ug/L	1	---	ND	---	---	---	---	30%
Toluene	ND	---	1.00	"	"	---	ND	---	---	---	---	30%
Ethylbenzene	ND	---	0.500	"	"	---	ND	---	---	---	---	30%
Xylenes, total	ND	---	1.50	"	"	---	ND	---	---	---	---	30%

Surr: 1,4-Difluorobenzene (Surr) Recovery: 104 % Limits: 80-120 % Dilution: 1x
Toluene-d8 (Surr) 102 % 80-120 % "
4-Bromofluorobenzene (Surr) 101 % 80-120 % "

Apex Laboratories

The results in this report apply to the samples analyzed in accordance with the chain of custody document. This analytical report must be reproduced in its entirety.



Darrell Auvil, Project Manager

Point Source Solutions, LLC
 10445 SW Canyon Road Suite 115
 Beaverton, OR 97005

Project: **General 2016**
 Project Number: Padden Ind. Park/WA160720
 Project Manager: Gil Cobb

Reported:
 08/22/16 16:52

QUALITY CONTROL (QC) SAMPLE RESULTS

Polychlorinated Biphenyls by EPA 8082A

Analyte	Result	MDL	Reporting Limit	Units	Dil.	Spike Amount	Source Result	%REC	%REC Limits	RPD	RPD Limit	Notes
Batch 6080257 - EPA 3510C (Neutral pH)						Water						
Blank (6080257-BLK1)						Prepared: 08/09/16 07:13 Analyzed: 08/09/16 11:28						C-07
EPA 8082A												
Aroclor 1016	ND	---	0.0909	ug/L	1	---	---	---	---	---	---	
Aroclor 1221	ND	---	0.0909	"	"	---	---	---	---	---	---	
Aroclor 1232	ND	---	0.0909	"	"	---	---	---	---	---	---	
Aroclor 1242	ND	---	0.0909	"	"	---	---	---	---	---	---	
Aroclor 1248	ND	---	0.0909	"	"	---	---	---	---	---	---	
Aroclor 1254	ND	---	0.0909	"	"	---	---	---	---	---	---	
Aroclor 1260	ND	---	0.0909	"	"	---	---	---	---	---	---	
<i>Surr: Decachlorobiphenyl (Surr)</i>		<i>Recovery: 63 %</i>		<i>Limits: 58-120 %</i>		<i>Dilution: 1x</i>						
LCS (6080257-BS1)						Prepared: 08/09/16 07:13 Analyzed: 08/09/16 11:46						C-07
EPA 8082A												
Aroclor 1016	1.78	---	0.100	ug/L	1	2.50	---	71	46-129%	---	---	
Aroclor 1260	2.22	---	0.100	"	"	"	---	89	45-134%	---	---	
<i>Surr: Decachlorobiphenyl (Surr)</i>		<i>Recovery: 83 %</i>		<i>Limits: 58-120 %</i>		<i>Dilution: 1x</i>						
LCS Dup (6080257-BSD1)						Prepared: 08/09/16 07:13 Analyzed: 08/09/16 12:04						C-07, Q-19
EPA 8082A												
Aroclor 1016	1.76	---	0.100	ug/L	1	2.50	---	70	46-129%	1	30%	
Aroclor 1260	2.13	---	0.100	"	"	"	---	85	45-134%	4	30%	
<i>Surr: Decachlorobiphenyl (Surr)</i>		<i>Recovery: 82 %</i>		<i>Limits: 58-120 %</i>		<i>Dilution: 1x</i>						



Point Source Solutions, LLC 10445 SW Canyon Road Suite 115 Beaverton, OR 97005	Project: General 2016 Project Number: Padden Ind. Park/WA160720 Project Manager: Gil Cobb	Reported: 08/22/16 16:52
---	--	------------------------------------

SAMPLE PREPARATION INFORMATION

Diesel and/or Oil Hydrocarbons by NWTPH-Dx

Prep: EPA 3510C (Fuels/Acid Ext.)

Lab Number	Matrix	Method	Sampled	Prepared	Sample Initial/Final	Default Initial/Final	RL Prep Factor
Batch: 6080195							
A6H0181-01	Water	NWTPH-Dx	08/04/16 12:14	08/05/16 14:01	980mL/5mL	1000mL/5mL	1.02

BTEX Compounds by EPA 8260B

Prep: EPA 5030B

Lab Number	Matrix	Method	Sampled	Prepared	Sample Initial/Final	Default Initial/Final	RL Prep Factor
Batch: 6080184							
A6H0181-01	Water	EPA 8260B	08/04/16 12:14	08/05/16 12:13	5mL/5mL	5mL/5mL	1.00

Polychlorinated Biphenyls by EPA 8082A

Prep: EPA 3510C (Neutral pH)

Lab Number	Matrix	Method	Sampled	Prepared	Sample Initial/Final	Default Initial/Final	RL Prep Factor
Batch: 6080257							
A6H0181-01	Water	EPA 8082A	08/04/16 12:14	08/09/16 07:13	990mL/5mL	1000mL/5mL	1.01

Apex Laboratories



The results in this report apply to the samples analyzed in accordance with the chain of custody document. This analytical report must be reproduced in its entirety.

Darrell Auvil, Project Manager

Point Source Solutions, LLC
10445 SW Canyon Road Suite 115
Beaverton, OR 97005

Project: **General 2016**
Project Number: Padden Ind. Park/WA160720
Project Manager: Gil Cobb

Reported:
08/22/16 16:52

Notes and Definitions

Qualifiers:

- C-07 Extract has undergone Sulfuric Acid Cleanup by EPA 3665A, Sulfur Cleanup by EPA 3660B, and Florisil Cleanup by EPA 3620B in order to minimize matrix interference.
- Q-19 Blank Spike Duplicate (BSD) sample analyzed in place of Matrix Spike/Duplicate samples due to limited sample amount available for analysis.

Notes and Conventions:

- DET Analyte DETECTED
- ND Analyte NOT DETECTED at or above the reporting limit
- NR Not Reported
- dry Sample results reported on a dry weight basis. Results listed as 'wet' or without 'dry' designation are not dry weight corrected.
- RPD Relative Percent Difference
- MDL If MDL is not listed, data has been evaluated to the Method Reporting Limit only.
- WMSC Water Miscible Solvent Correction has been applied to Results and MRLs for volatiles soil samples per EPA 8000C.
- Batch QC Unless specifically requested, this report contains only results for Batch QC derived from client samples included in this report. All analyses were performed with the appropriate Batch QC (including Sample Duplicates, Matrix Spikes and/or Matrix Spike Duplicates) in order to meet or exceed method and regulatory requirements. Any exceptions to this will be qualified in this report. Complete Batch QC results are available upon request. In cases where there is insufficient sample provided for Sample Duplicates and/or Matrix Spikes, a Lab Control Sample Duplicate (LCS Dup) is analyzed to demonstrate accuracy and precision of the extraction and analysis.
- Blank Policy Apex assesses blank data for potential high bias down to a level equal to 1/2 the method reporting limit (MRL), except for conventional chemistry and HCID analyses which are assessed only to the MRL. Sample results flagged with a B or B-02 qualifier are potentially biased high if they are less than ten times the level found in the blank for inorganic analyses or less than five times the level found in the blank for organic analyses.
- For accurate comparison of volatile results to the level found in the blank; water sample results should be divided by the dilution factor, and soil sample results should be divided by 1/50 of the sample dilution to account for the sample prep factor.
- Results qualified as reported below the MRL may include a potential high bias if associated with a B or B-02 qualified blank. B and B-02 qualifications are not applied to J qualified results reported below the MRL.
- QC results are not applicable. For example, % Recoveries for Blanks and Duplicates, % RPD for Blanks, Blank Spikes and Matrix Spikes, etc.
- *** Used to indicate a possible discrepancy with the Sample and Sample Duplicate results when the %RPD is not available. In this case, either the Sample or the Sample Duplicate has a reportable result for this analyte, while the other is Non Detect (ND).

Apex Laboratories

The results in this report apply to the samples analyzed in accordance with the chain of custody document. This analytical report must be reproduced in its entirety.



Darrell Auvil, Project Manager

APPENDIX B
QUALIFICATIONS



Jeffrey Wilson
Environmental Scientist

CURRENT POSITION

Environmental Scientist
 Point Source Solutions, LLC

PAST EMPLOYMENT

Associated Environmental Group
 Olympia, Washington
 2012-2014

Bureau of Land Management
 Corvallis, Oregon 2011-2012

EDUCATION

B.S., Environmental Science, PSU,
 2008

Graduate Certificate, Hydrology,
 PSU, 2011

LICENSES & CERTIFICATIONS

OSHA 40-Hour Hazardous Waste Worker

OSHA 10-Hour Construction

Washington State Registered Site Assessor

Washington State UST Decommissioning

Washington State Licensed AHERA Building Surveyor

Certified Erosion and Sediment Control Inspector

Certified Erosion and Sediment Control Lead

SUMMARY OF SKILLS AND QUALIFICATIONS

Over 3 years of experience performing technical field work including soil sampling/profiling, groundwater monitoring, vapor sampling, asbestos & lead sampling, land surveying, biological monitoring, remediation activities and remediation systems O&M. Responsible for the writing or preparation of various environmental reports.

Prior to joining Point Source, Mr. Wilson was responsible performing various environmental field and office work. Office work included report writing of Phase I Environmental Site Assessments, Ground Water Monitoring Events, Asbestos/Lead Building Inspections; report preparation of Phase II Environmental Site Assessments, In-Situ Bioremediation projects, UST Decommissioning projects and Ground Water Monitoring Well Installation projects; data entry of field and laboratory analytical results. Environmental field work included soil sampling/profiling, groundwater monitoring & well installation, vapor sampling, asbestos & lead sampling, biological monitoring, land surveying and remediation systems O&M. Mr. Wilson was also responsible for oversight of field crews performing various subsurface investigations and remediation projects.

SUMMARY OF COMPLETED PROJECTS

Conducted numerous Phase I Environmental Site Assessments and report writing.

Conducted numerous AHERA Building Surveys and report writing.

Conducted numerous Quarterly Ground Water Monitoring events and report writing.

Conducted numerous Phase II Environmental Site Assessments and report preparation.

Conducted In-Situ Bioremediation, Monitoring Well Installation, UST Decommissioning & Remedial Actions at numerous sites throughout Washington and report preparation.

Managed investigative derived waste profiling and disposal.

Managed repair and maintenance of remediation systems, including DPE, SVE, and Ozone systems.

Managed repair and maintenance of sampling equipment.



Gil Cobb
Licensed Geologist

CURRENT POSITION

Principal and Owner
Point Source Solutions, LLC

PAST EMPLOYMENT

PSI, Inc.
Portland, Oregon
1991-2003

Hall-Kimbrell Environmental
Honolulu, Hawaii
1985-1991

Morco Geological Services
Carlsbad, New Mexico
1982-1985

EDUCATION

B.S., Earth Sciences, New Mexico
Highlands University, 1978

REGISTRATIONS

Licensed Geologist/Hydrogeologist
#1594, Washington

Registered Geologist #1440,
Oregon

Professional Geologist #5343149-
2250, Utah

**LICENSES &
CERTIFICATIONS**

Certified Asbestos Inspector

OSHA 40-Hour Hazardous Waste
Worker

UST Site Assessor, Washington

CONTINUING EDUCATION

Wellhead Protection Planning,
Oregon DEQ

Risk-Based Corrective Action,
ASTM

Treatment Technology for
Contaminated Soils and Ground
Water, NGWA

SUMMARY OF SKILLS AND QUALIFICATIONS

Over 28 years of experience performing Phase I, Phase II, remediation design and management and other regulatory oversight and environmental site reconnaissance services.

Prior to joining Point Source in 2004, Mr. Cobb was responsible for training and the technical reporting of 35-40 staff members from the offices of a national consulting firm in Oregon, Washington, Hawaii, Utah and Colorado. His primary responsibilities included: project management; the mentoring of young professionals in environmental consulting departments in the western US; report review of environmental assessments, NEPA/SEPA documentation, subsurface site characterizations and underground storage tank closures; and regulatory interaction and negotiation on behalf of the firm's clients both in the private and public sectors.

SUMMARY OF COMPLETED PROJECTS

WA Department of Natural Resources; Lacey, WA: Project Manager/Project Geologist for the environmental site characterization of various locations within the DNR-Lacey Compound. This compound had served as a maintenance facility for DNR for over 30 years with vehicle and equipment shops as well as buried waste disposal sites.

Former Bennett Paint Site; Salt Lake City, UT: Project Manager/Project Geologist for the environmental site characterization, remediation and closure of a former paint manufacturing site. Extensive clean-up of this industrial site was required including the remediation of metals and solvents in soil and groundwater. The site has now been redeveloped for retail purposes.

Clark County, WA; Vancouver, WA: Project Manager for all technical and administrative tasks involving the decommissioning and closure of a diesel UST at the Clark County Corrections Center as well as the installation of a new emergency generator fueling system.

Town Pump; White Salmon, WA: Project Manager/Project Geologist for the environmental site characterization and soils cleanup and of three separate petroleum hydrocarbon plumes which had affected a state right-of-way and an adjacent trailer park. All work was performed under an Agreed Order with the State of Washington.

Fire Protection District #2; Graham, WA: Project Manager/ Project Geologist for all aspects of UST decommissioning, site characterization, permitting, soils cleanup, and construction of a groundwater extraction system.