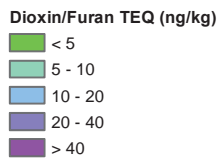
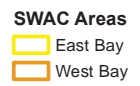


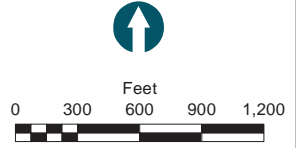
C:\Users\Paradise\Documents\01658\Budd\_Inlet\Map\Invest\_Report\F051\_Dr\_IDW.mxd\_incorrect\_3/13/2014\_10:37:20 AM



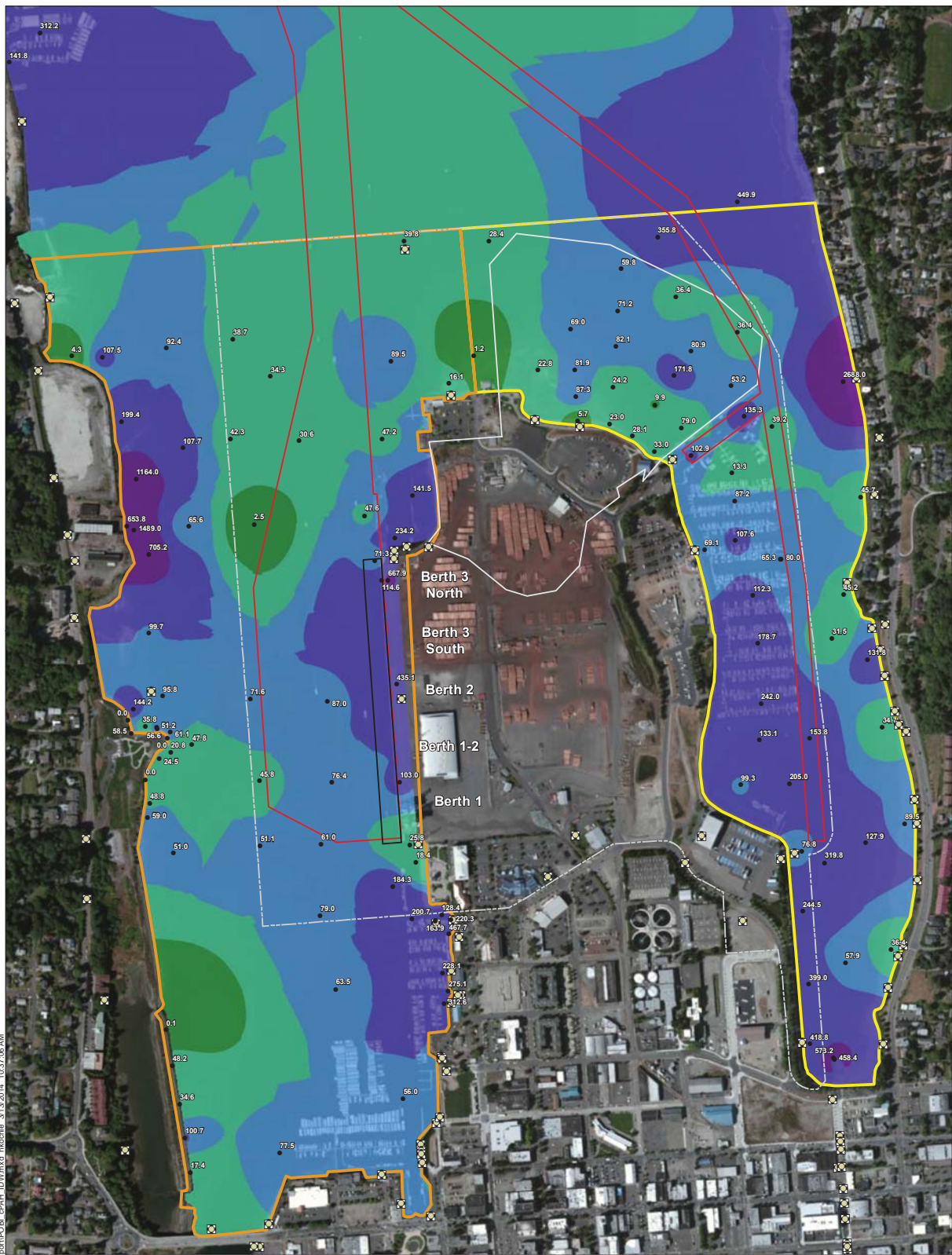
- Surface Grab Location
- ☒ Outfall
- Cascade Pole Cleanup Boundary
- Berth Area Boundary
- Federal Navigation Channel
- Study Area



**NOTES:**  
 1. Total Dioxin/Furan TEQ Concentrations, (2005-Mammal, U = 0, EMPC included).  
 2. Total Dioxin/Furan TEQ Concentrations calculated using an Inverse Distance Weighting interpolator.  
 3. Background imagery provided by ESRI online services.



**Figure 5-1**  
 Interpolated Surface Sediment Dioxin/Furan Concentrations  
 Budd Inlet Investigation Report  
 Port of Olympia



C:\Users\Paradise\Documents\01658\Budd\_Inlet\Map\Invest\_Report\F051\_ePAH\_IDW.mxd mxd 3/12/2014 10:37:06 AM

**Total cPAH TEQ (µg/kg)**

- < 10
- 10 - 50
- 50 - 100
- 100 - 500
- > 500

- Surface Grab Location
- Outfall
- Cascade Pole Cleanup Boundary
- Berth Area Boundary
- Federal Navigation Channel
- Study Area

**SWAC Areas**

- East Bay
- West Bay

**NOTES:**

1. Total cPAH TEQ (7 minimum CAEPA 2005) (U = 0).
2. Background imagery provided by ESRI online services.

