

Yard Soil Replacement Work Complete for 2016

CONTACTS & INFORMATION

For More Information:

Craig Rankine
Ecology Site Manager
Phone: (360) 690-4795
E-mail: craig.rankine@ecy.wa.gov

Website:

<https://fortress.wa.gov/ecy/gsp/Sitepage.aspx?csid=3020>

Public Involvement:

Stacy Galleher
Public Involvement Coordinator
Phone: (360) 407-6255
Email: Stacy.Galleher@ecy.wa.gov

Construction Questions

Lauren Wirtis—Maul Foster Alongi
Project Administrator
Phone: (360) 947-2210
Email: lwirtis@maulfoster.com

Special Accommodations

To request ADA accommodation including materials in a format for the visually impaired, call Ecology at (360) 407-6300.

Persons with impaired hearing may call Washington Relay Service at 711. Persons with speech disability may call TTY at (877) 833-6341.

Facility Site ID #: 1019

Cleanup Site ID #: 3020

This summer, the Department of Ecology and the Port of Ridgefield (port) removed dioxin contaminated soil in 20 residential yards and some right-of-way areas in the neighborhood east of the port property (off-property area, see map) at the Pacific Wood Treating cleanup site. Remaining yards in the current off-property area will be cleaned up in 2017.

We are finishing work in the last few yards

While most of the construction is complete for 2016, we are still finishing up replacing plants in a few yards. We expect to finish this work by mid-November.

What Happens Next?

- We will continue to sample soil to find the extent of the off-property contamination.
- Once we find the extent, we will offer soil sampling to homeowners in the affected area.
- We will keep the website updated with the latest news.

How can I keep my family safe from possible contamination?

There are still some homes within the off property area that need to be cleaned up and there is likely some contamination outside of the off-property area which we are still studying. In the meantime, there are several ways you can reduce your exposure to dioxins and other types of soil contamination. For example you can:

- Wash hands before eating and after playing or working outside.
- Remove your shoes before going inside.
- Prevent children from eating dirt.
- Wash children's toys and pacifiers often.
- Mop, vacuum, and dust with a damp cloth often.

Background

From 1964-1993, Pacific Wood Treating (PWT) operated on the Port of Ridgefield (port) property. PWT pressure treated wood products with a variety of toxic chemicals. In 2009, the port began sampling in right-of-ways to define the extent of contamination in the off-property area. Dioxins were the only contaminant found above cleanup levels. From the right-of-way sample results it was clear that dioxins were also in yards. The yard soil sampling program started spring 2015.

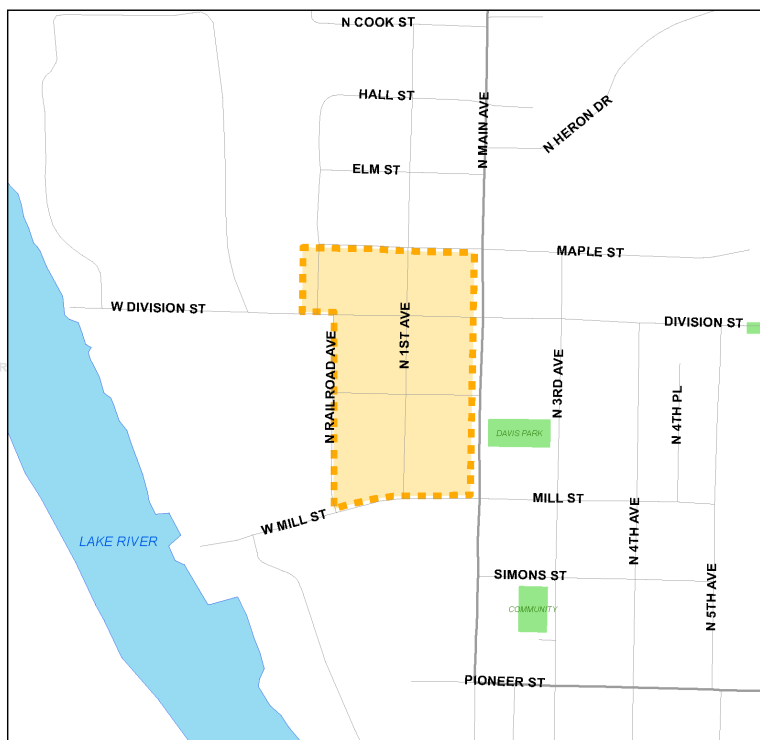
We have not found the current extent of contamination. We will collect additional soil samples east of Main Ave., south of Mill Street, and north of Maple Street. We will start with the right-of-ways and continue sampling residents yards until we find the extent of contamination.



PO Box 47775

Olympia, WA 98504-7775

Yard Soil Replacement Complete for 2016



Ecology and the port removed contaminated soil from 20 yards and some right-of-ways in the off-property area (orange area in map). We will complete replacement in the off-property area in 2017.

¿Habla Español? Si necesita esta información en español, contáctenos a preguntas@ecy.wa.gov.

For more information visit www.ecy.wa.gov and search for “csid 3020”

Facility Site ID #: 1019
Cleanup Site ID #: 3020

