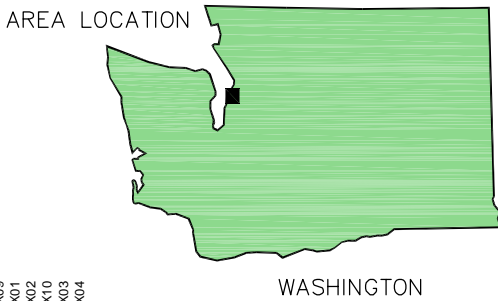



REFERENCE: BASE MAP USGS QUADS., 7.5 MIN. SERIES (TOPOGRAPHIC) – EDMONDS EAST, WASH. AND EDMONDS WEST, WASH.



UNOCAL EDMONDS BULK FUEL TERMINAL EDMONDS, WASHINGTON	
<b>SITE LOCATION MAP</b>	
	FIGURE <b>1</b>

XREFS:  
 45362X05  
 45362X06  
 45362X07  
 45362X08  
 45362X09  
 45362X01  
 45362X02  
 45362X10  
 45362X03  
 45362X04

IMAGES:  
 Edmond-E.tif  
 Edmond-W.tif

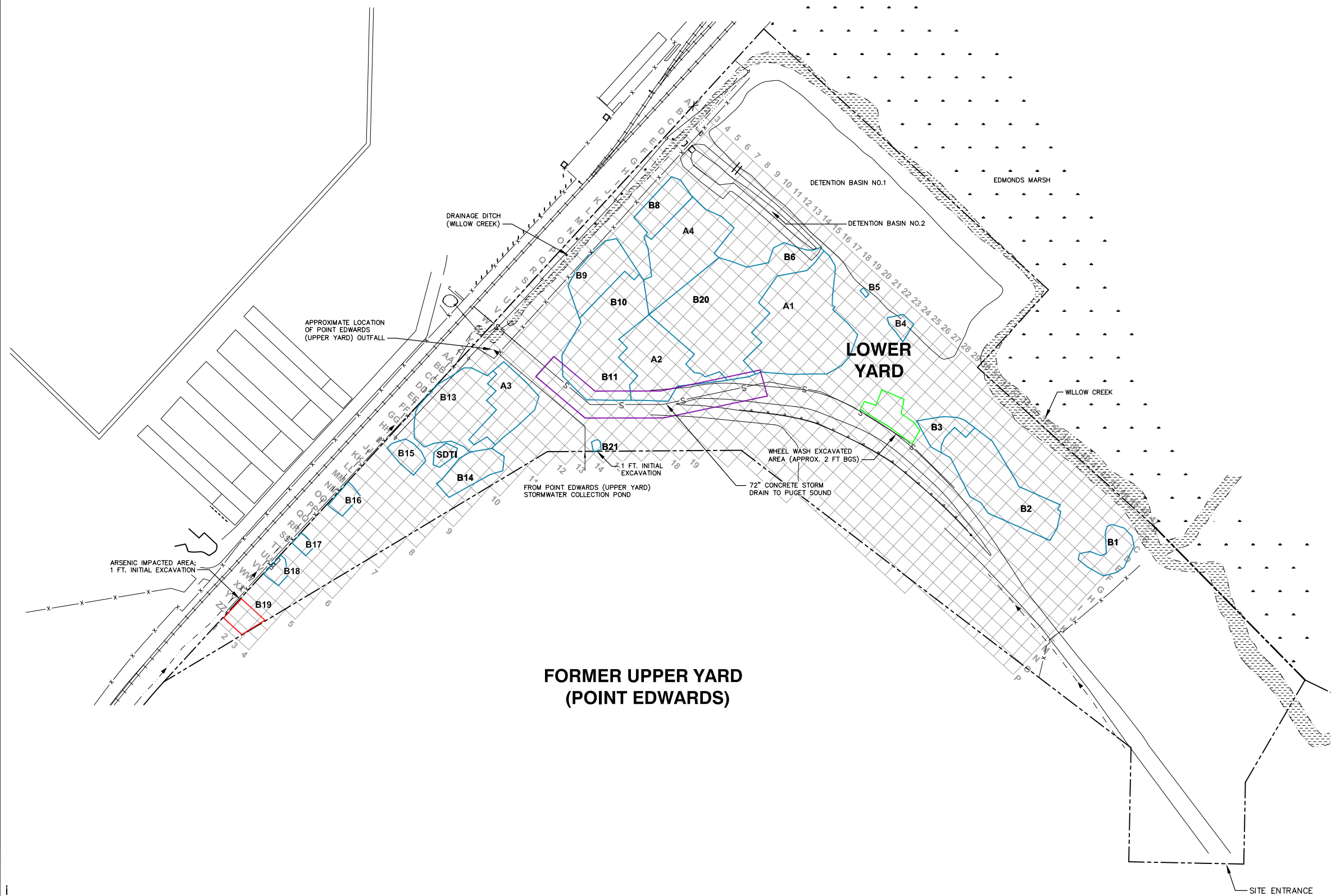
PROJECTNAME: ---



XREFS: PROJECTNAME: --

IMAGES: Edmond-E.tif Edmond-W.tif

45362X05  
45362X06  
45362X07  
45362X08  
45362X09  
45362X01  
45362X02  
45362X10  
45362X03  
45362X04



- LEGEND:**
- LOWER YARD SITE BOUNDARY
  - - - DRAINAGE DITCH
  - EXCAVATION AREAS
  - SHALLOW EXCAVATION AREA
  - ARSENIC REMOVAL AREA
  - WSDOT STORMWATER LINE AREA

**NOTE:**  
1. BASE MAP SUPPLIED BY SLR INTERNATIONAL CORP., APRIL 2007, AT A SCALE OF 1"=150'.



UNOCAL EDMONDS BULK FUEL TERMINAL  
EDMONDS, WASHINGTON

**PHASE I SITE OVERVIEW AND  
EXCAVATION AREAS**



FIGURE  
**2**



FINAL EXCAVATION QUANTITIES	
EXCAVATION AREA (SQ. FT.)	EXCAVATION VOLUME (CU. YD.)
24,474	7,579

FINAL EXCAVATION QUANTITIES	
EXCAVATION AREA (SQ. FT.)	EXCAVATION VOLUME (CU. YD.)
18,127	7,165

FINAL EXCAVATION QUANTITIES	
EXCAVATION AREA (SQ. FT.)	EXCAVATION VOLUME (CU. YD.)
59,588	22,195

FINAL EXCAVATION QUANTITIES	
EXCAVATION AREA (SQ. FT.)	EXCAVATION VOLUME (CU. YD.)
25,716	7,694

TOTAL FINAL EXCAVATION QUANTITIES	
EXCAVATION AREA (SQ. FT.)	EXCAVATION VOLUME (CU. YD.)
205,189	72,830

FINAL EXCAVATION QUANTITIES	
EXCAVATION AREA (SQ. FT.)	EXCAVATION VOLUME (CU. YD.)
128	350

FINAL EXCAVATION QUANTITIES	
EXCAVATION AREA (SQ. FT.)	EXCAVATION VOLUME (CU. YD.)
34,202	14,379

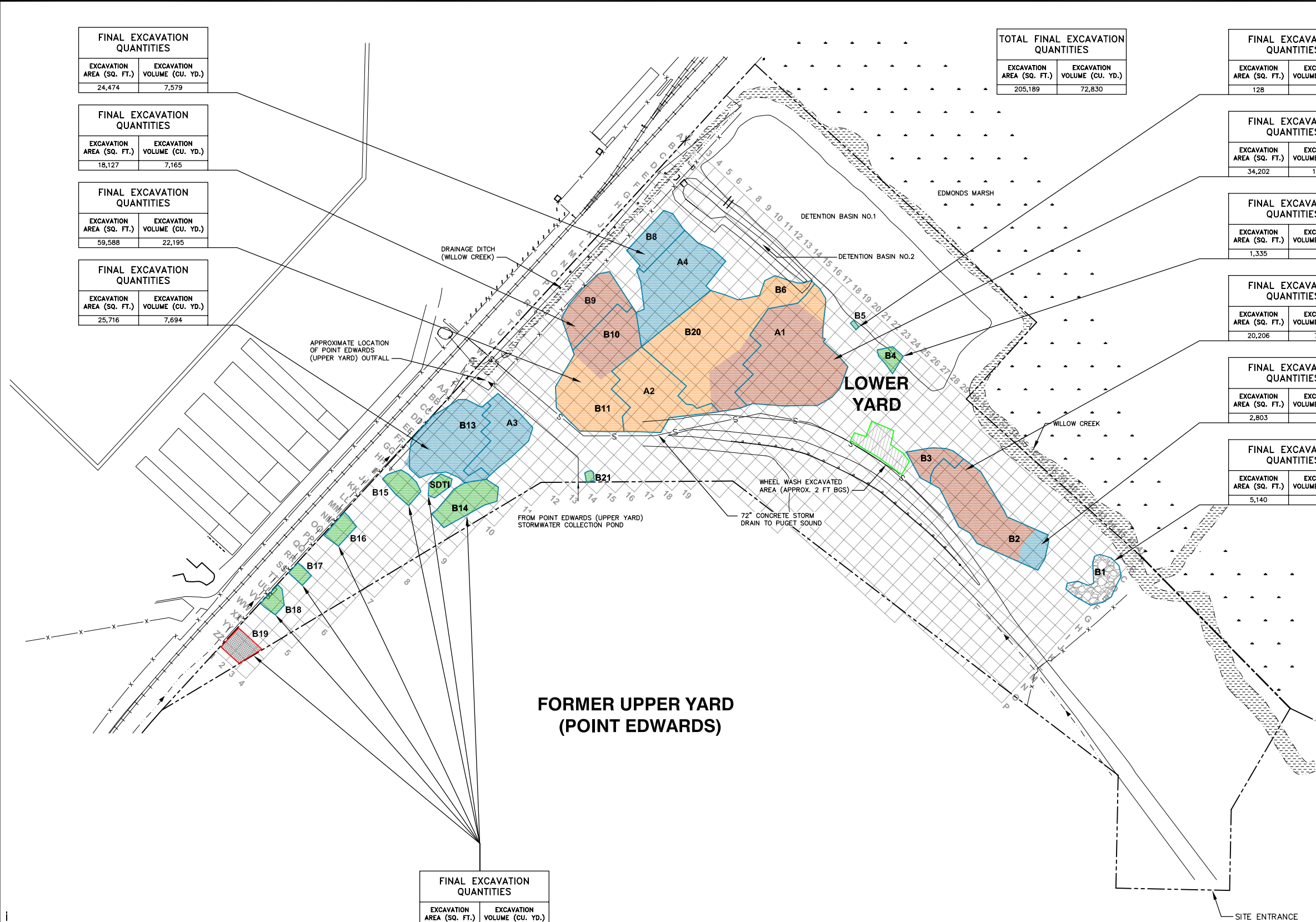
FINAL EXCAVATION QUANTITIES	
EXCAVATION AREA (SQ. FT.)	EXCAVATION VOLUME (CU. YD.)
1,335	248

FINAL EXCAVATION QUANTITIES	
EXCAVATION AREA (SQ. FT.)	EXCAVATION VOLUME (CU. YD.)
20,206	7,410

FINAL EXCAVATION QUANTITIES	
EXCAVATION AREA (SQ. FT.)	EXCAVATION VOLUME (CU. YD.)
2,803	789

FINAL EXCAVATION QUANTITIES	
EXCAVATION AREA (SQ. FT.)	EXCAVATION VOLUME (CU. YD.)
5,140	62

FINAL EXCAVATION QUANTITIES	
EXCAVATION AREA (SQ. FT.)	EXCAVATION VOLUME (CU. YD.)
16,363	4,071

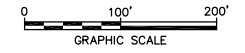


**LEGEND:**

- LOWER YARD SITE BOUNDARY
- DRAINAGE DITCH
- FINAL EXTENTS OF SOIL EXCAVATION (APPROXIMATELY 8' BGS)
- FINAL EXTENTS OF SOIL EXCAVATION (APPROXIMATELY 8-10' BGS)
- FINAL EXTENTS OF SOIL EXCAVATION (APPROXIMATELY 10-12' BGS)
- FINAL EXTENTS OF SOIL EXCAVATION (APPROXIMATELY >12' BGS)
- DEBRIS REMOVAL AREA
- ARSENIC REMOVAL AREA
- TRUCK WHEEL WASH REMOVAL AREA

**NOTE:**

1. BASE MAP SUPPLIED BY SLR INTERNATIONAL CORP., APRIL 2007, AT A SCALE OF 1"=150'.
2. VOLUME AND AREA DATA CORRESPOND TO SHADED AREAS.
3. TRUCK WHEEL WASH AREA USED DURING PHASE I REMEDIATION OPERATIONS.

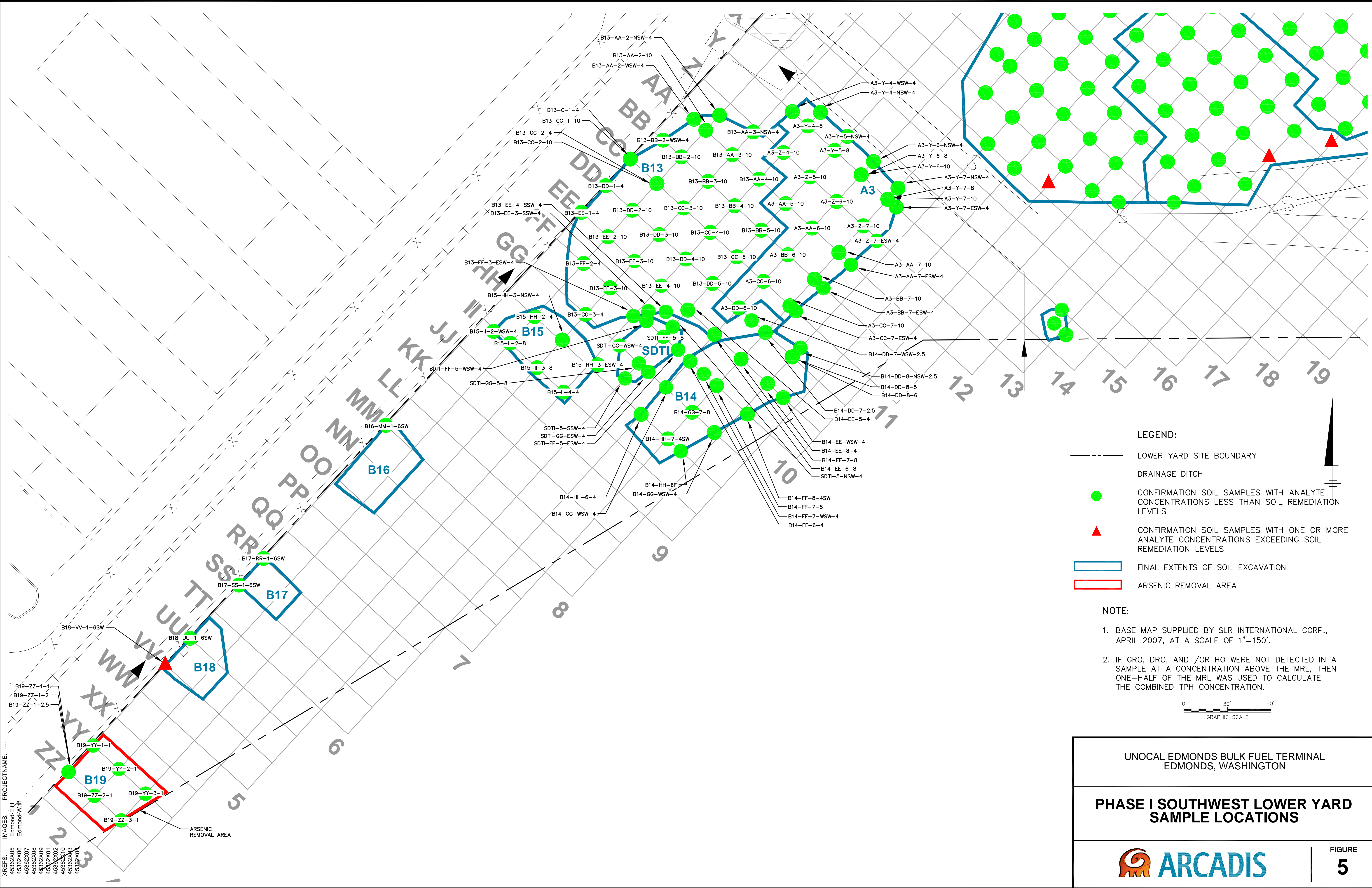


UNOCAL EDMONDS BULK FUEL TERMINAL  
EDMONDS, WASHINGTON

**PHASE I FINAL EXCAVATION AREAS  
AND VOLUMES**

FIGURE  
**4**





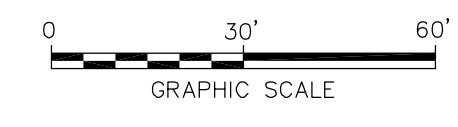
XREFS: PROJECTNAME: Edmonds-Edif Edmonds-Wtft  
 45362\X05  
 45362\X06  
 45362\X07  
 45362\X08  
 45362\X09  
 45362\X10  
 45362\X11  
 45362\X12  
 45362\X13  
 45362\X14

**LEGEND:**

- LOWER YARD SITE BOUNDARY
- DRAINAGE DITCH
- CONFIRMATION SOIL SAMPLES WITH ANALYTE CONCENTRATIONS LESS THAN SOIL REMEDIATION LEVELS
- CONFIRMATION SOIL SAMPLES WITH ONE OR MORE ANALYTE CONCENTRATIONS EXCEEDING SOIL REMEDIATION LEVELS
- FINAL EXTENTS OF SOIL EXCAVATION
- ARSENIC REMOVAL AREA

**NOTE:**

1. BASE MAP SUPPLIED BY SLR INTERNATIONAL CORP., APRIL 2007, AT A SCALE OF 1"=150'.
2. IF GRO, DRO, AND /OR HO WERE NOT DETECTED IN A SAMPLE AT A CONCENTRATION ABOVE THE MRL, THEN ONE-HALF OF THE MRL WAS USED TO CALCULATE THE COMBINED TPH CONCENTRATION.



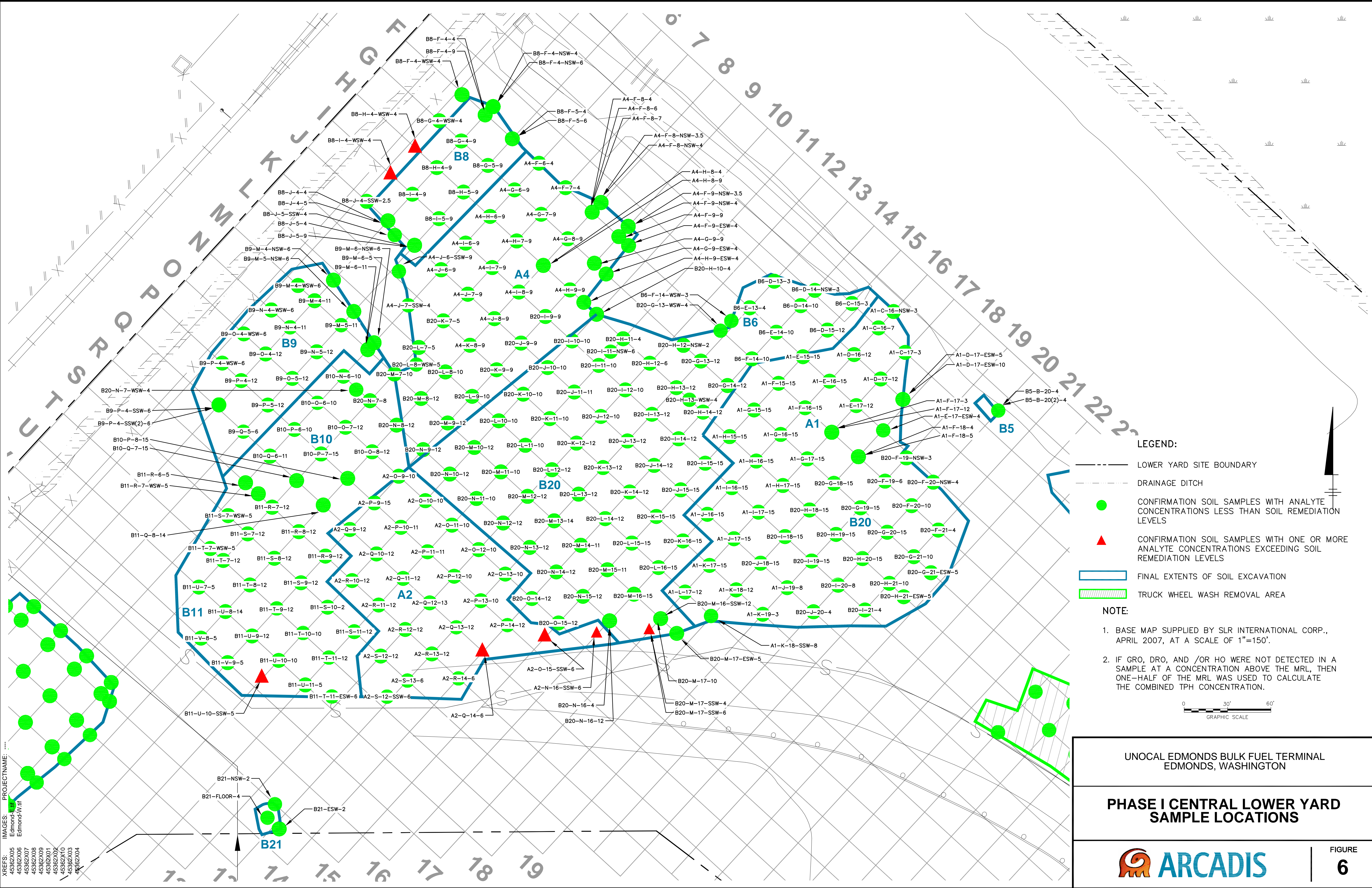
UNOCAL EDMONDS BULK FUEL TERMINAL  
EDMONDS, WASHINGTON

**PHASE I SOUTHWEST LOWER YARD  
SAMPLE LOCATIONS**

**ARCADIS**

**FIGURE  
5**





UNOCAL EDMONDS BULK FUEL TERMINAL  
EDMONDS, WASHINGTON

**PHASE I CENTRAL LOWER YARD  
SAMPLE LOCATIONS**


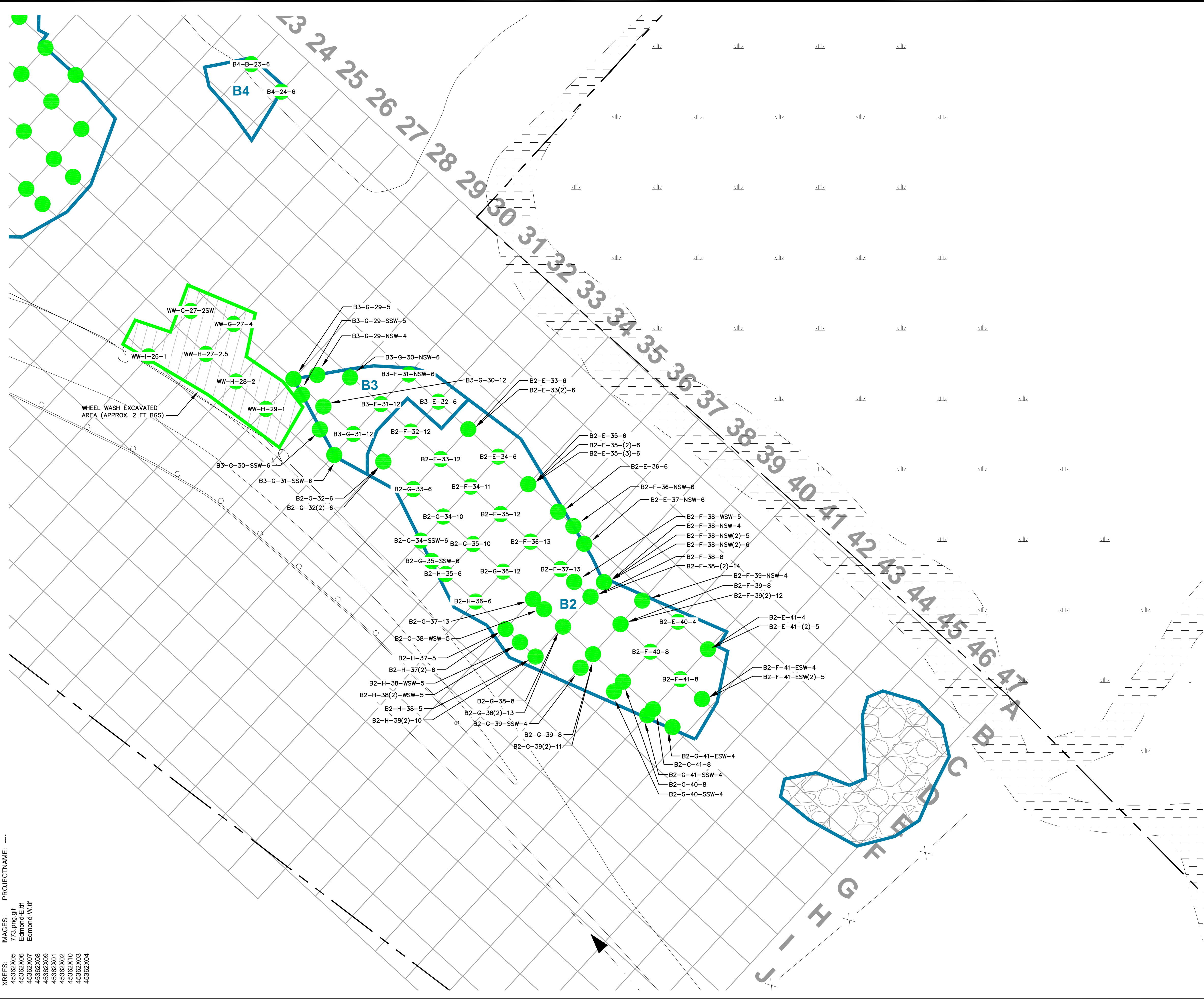
 **ARCADIS**

FIGURE  
**6**



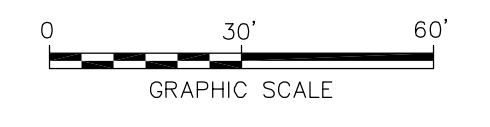


**LEGEND:**

- LOWER YARD SITE BOUNDARY
- DRAINAGE DITCH
- CONFIRMATION SOIL SAMPLES WITH ANALYTE CONCENTRATIONS LESS THAN SOIL REMEDIATION LEVELS
- FINAL EXTENTS OF SOIL EXCAVATION
- DEBRIS REMOVAL AREA
- TRUCK WHEEL WASH REMOVAL AREA

**NOTE:**

1. BASE MAP SUPPLIED BY SLR INTERNATIONAL CORP., APRIL 2007, AT A SCALE OF 1"=150'.
2. IF GRO, DRO, AND /OR HO WERE NOT DETECTED IN A SAMPLE AT A CONCENTRATION ABOVE THE MRL, THEN ONE-HALF OF THE MRL WAS USED TO CALCULATE THE COMBINED TPH CONCENTRATION.



UNOCAL EDMONDS BULK FUEL TERMINAL  
EDMONDS, WASHINGTON

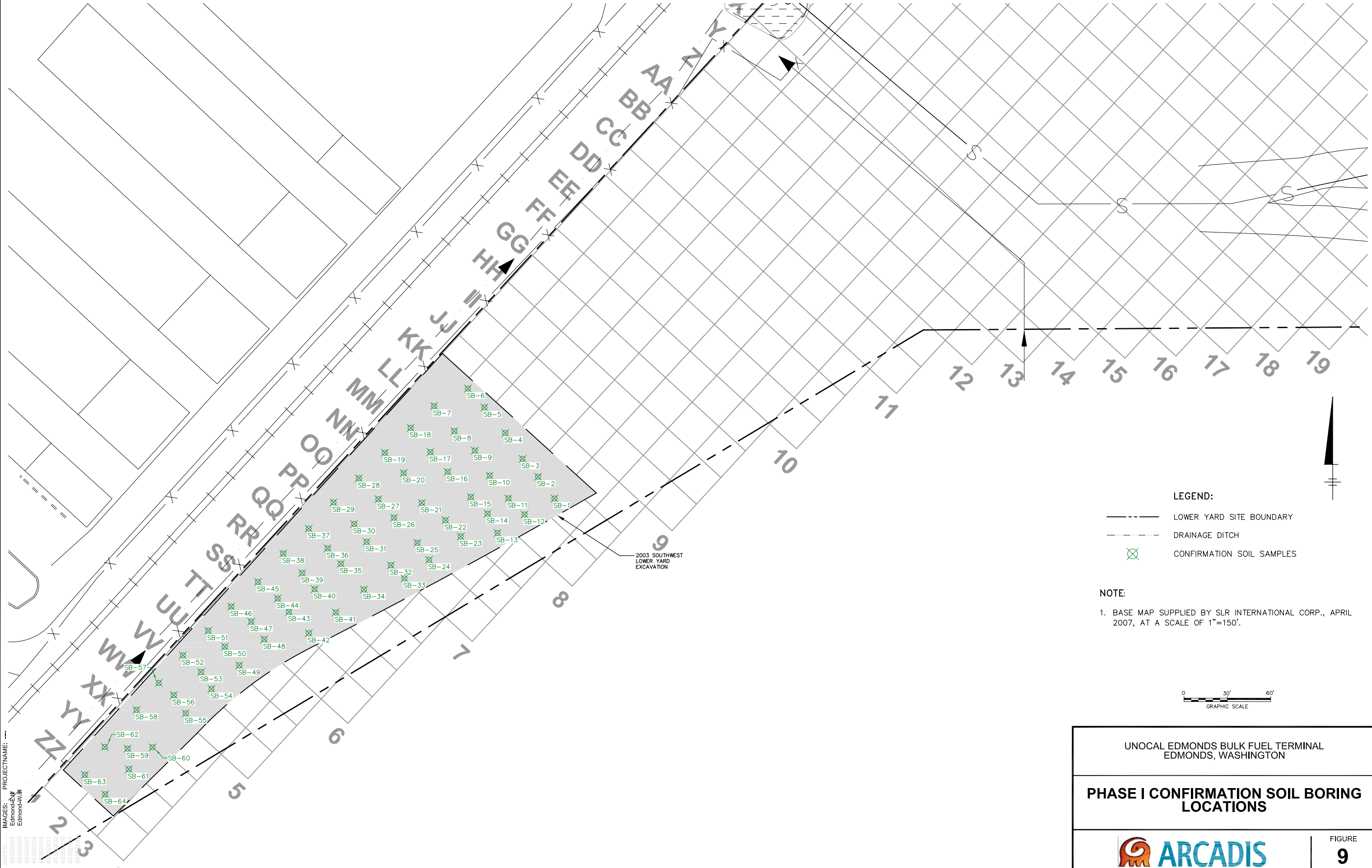
**PHASE I SOUTHEAST LOWER YARD  
SAMPLE LOCATIONS**

FIGURE  
**7**









PROJECTNAME: ---  
 IMAGES: Edmonds-Exc Edmonds-Walk

UNOCAL EDMONDS BULK FUEL TERMINAL  
 EDMONDS, WASHINGTON

**PHASE I CONFIRMATION SOIL BORING LOCATIONS**

**ARCADIS**

FIGURE **9**

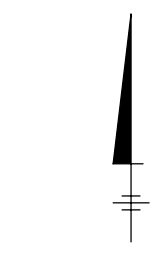
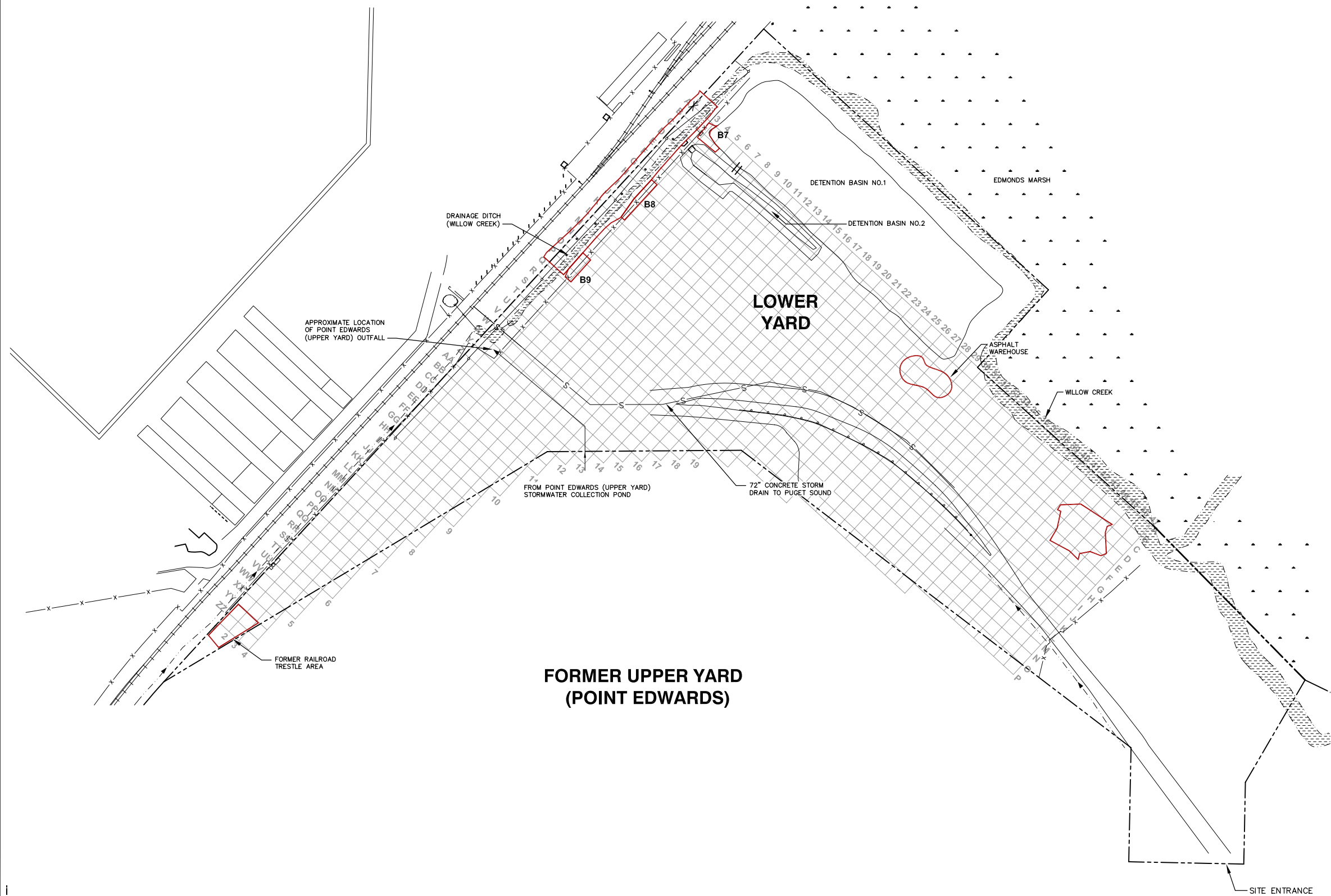






XREFS: PROJECTNAME: --

IMAGES: Edmond-E.tif  
Edmond-W.tif  
45362X05  
45362X06  
45362X07  
45362X08  
45362X09  
45362X01  
45362X02  
45362X10  
45362X03  
45362X04




- LEGEND:**
- LOWER YARD SITE BOUNDARY
  - - - DRAINAGE DITCH
  - ▭ PHASE II PROPOSED EXCAVATION AREAS

**NOTE:**

1. BASE MAP SUPPLIED BY SLR INTERNATIONAL CORP., APRIL 2007, AT A SCALE OF 1"=150'.



UNOCAL EDMONDS BULK FUEL TERMINAL EDMONDS, WASHINGTON	
<b>PLANNED PHASE II EXCAVATION AREAS</b>	
	FIGURE <b>11</b>