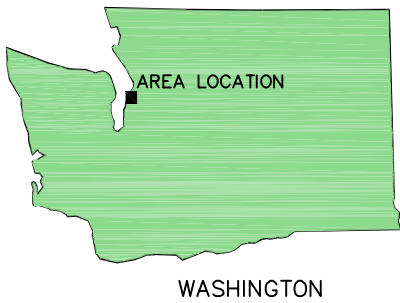
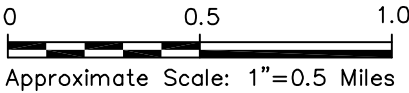


CITY: (TAMPA, FL) \SRACUSE, NY GROUP: ENVCAD DB: JAR, PGL, PAK, D, RASAR LYS: ONE*OFF*REF*
 G:\ENVCAD\SRACUSE\ACT1804562\000\00006\DWG\4562\NT1.DWG LAYOUT: 1. SAVER: 2/13/2009 9:11 AM
 ACADVER: 17.05 (LMS TECH) PAGES: 17.05 (LMS TECH) PLOT: PLT\FULL.CTB PLOTTED: 2/13/2009 9:11 AM BY: LISTER, PAUL
 XREFS: IMAGES: PROJECTNAME: Edmond-E.dwg Edmond-W.dwg



REFERENCE: USGS QUADS., 7.5 MIN. SERIES (TOPOGRAPHIC) - EDMONDS EAST, WASH. AND EDMONDS WEST, WASH.

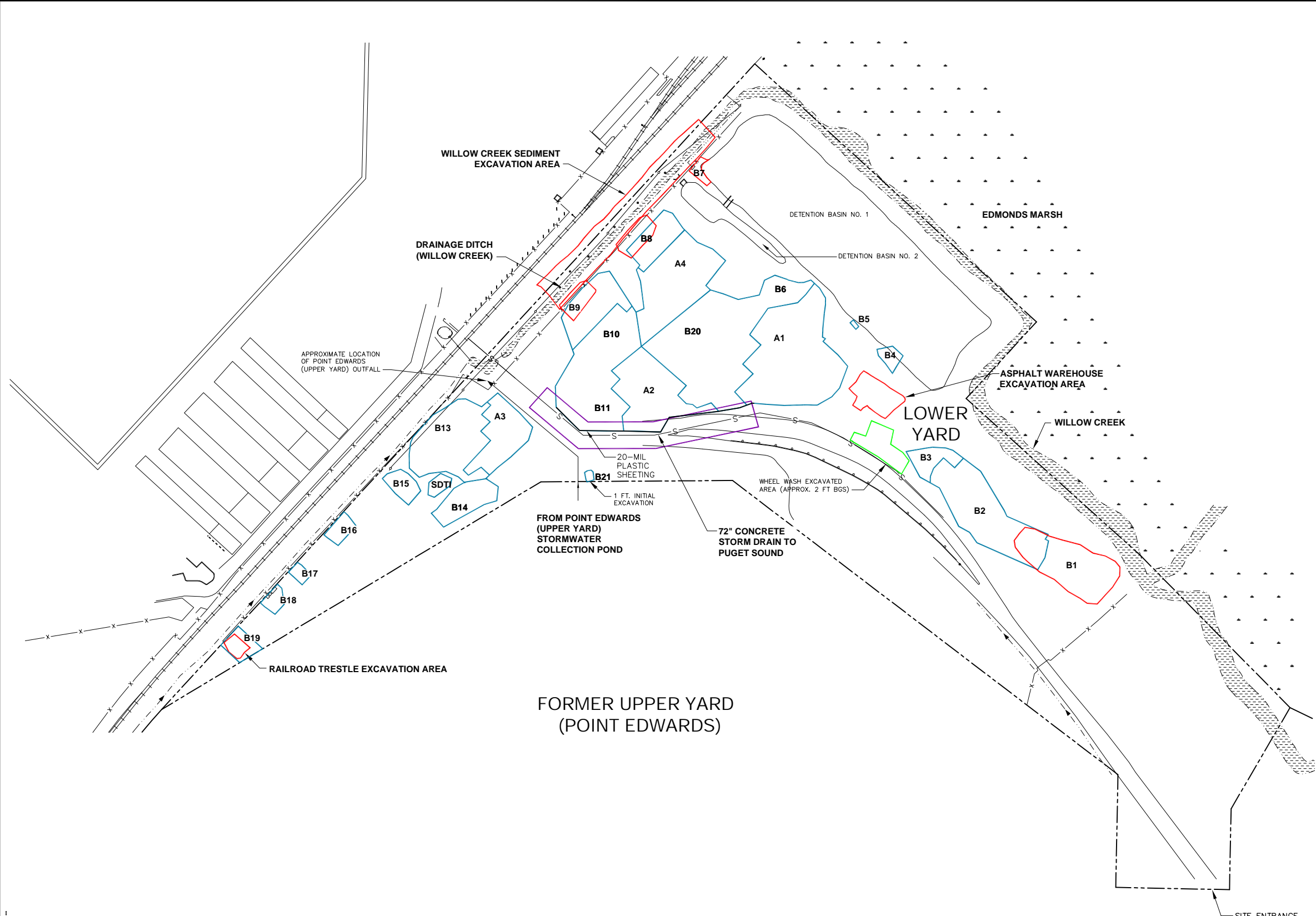


WASHINGTON



CHEVRON ENVIRONMENTAL MANAGEMENT COMPANY FORMER UNOCAL TERMINAL EDMONDS, WASHINGTON	
SITE LOCATION MAP	
	FIGURE 1

CITY: SYRACUSE, NY GROUP: ENV/CAD DB: DMW PGL/KMD PIC: J. VOGELIY PM: R. ANDRESEN TR: D. RASAR LTR: ON=OFF-REF. (FRZ)
 G:\ENV\CAD\SYRACUSE\ACT\B0045382\0002\0000\2\DWG\45382B08.dwg LAYOUT: 2\$AVED: 11/19/2009 1:30 PM ACADVER: 17.05 (LMS TECH) PAGES: 17
 XREFS: 45382X05 45382X01 45382X02 45382X00
 IMAGES: PROJECTNAME: ---
 PLT: FULL CTB PLOTTED: 11/19/2009 1:30 PM BY: LISTER, PAUL

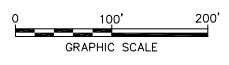


LEGEND:

- LOWER YARD SITE BOUNDARY
- DRAINAGE DITCH
- PHASE I EXCAVATION AREAS
- SHALLOW PHASE I EXCAVATION AREA
- WSDOT STORMWATER LINE AREA
- PHASE II EXCAVATION AREAS

NOTE:

1. BASE MAP SUPPLIED BY SLR INTERNATIONAL CORP., APRIL 2007, AT A SCALE OF 1"=150'.

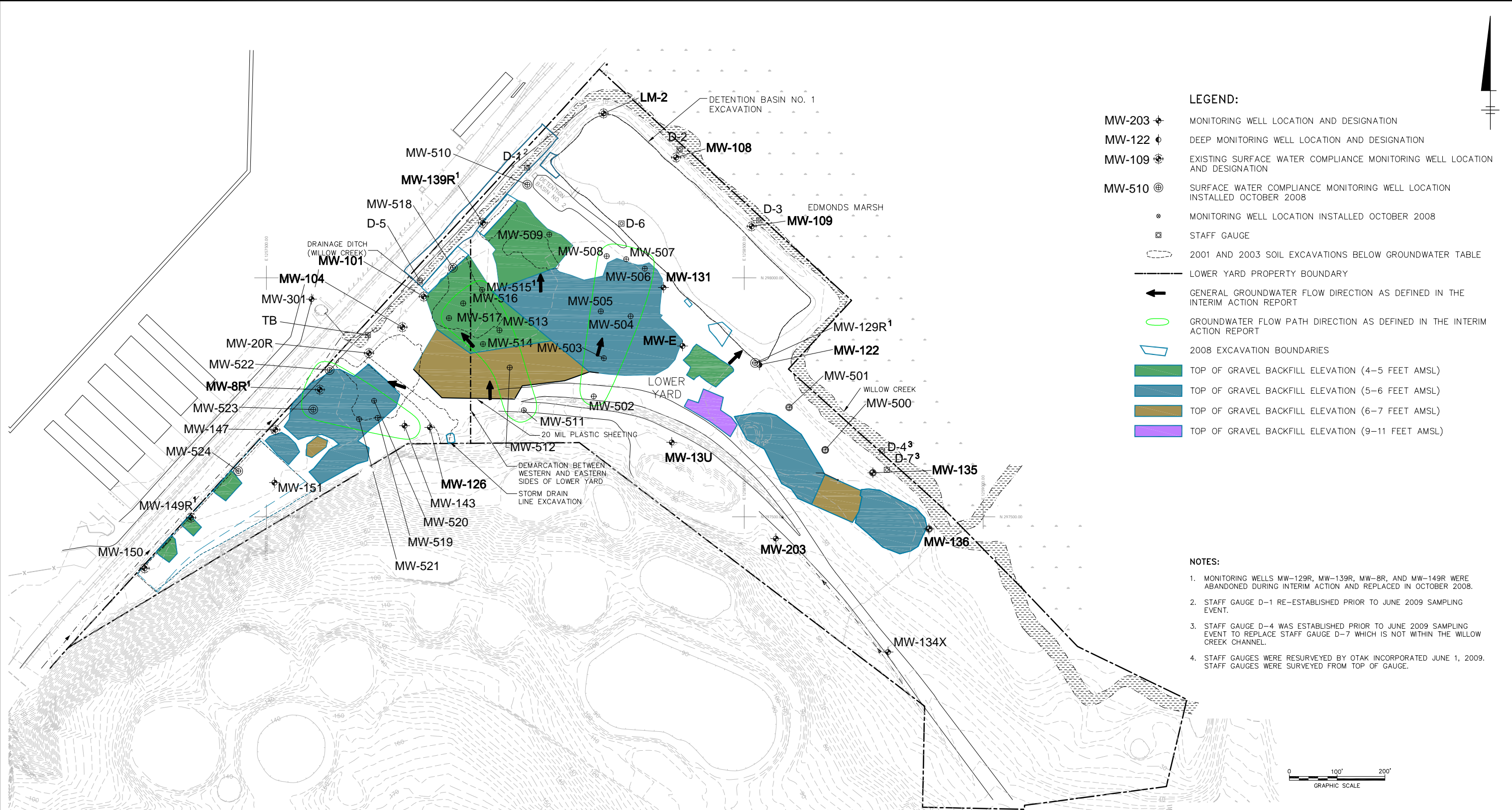


CHEVRON ENVIRONMENTAL MANAGEMENT COMPANY
 FORMER UNOCAL EDMONDS TERMINAL
 EDMONDS, WASHINGTON

PHASE II SITE OVERVIEW AND EXCAVATION AREAS

FIGURE 2

CITY: (TAMPA, FL) SYRACUSE, NY GROUP: ENVCAD DB: (J. RICHARDS), K. DAVIS, P. LISTER PW: R. ANDRESEN TM: S. ZORN TR: D. RASAR LXR: ONL OFF: REF
 G:\ENVCAD\SYRACUSE\ACT\B0045382\0001\DWG\45382\05.dwg LAYOUT: 35 SAVED: 11/19/2009 10:08 AM ACADVER: 17.05 (LMS TECH) PAGES: 17
 PLOT: FULL CTB PLOTTED: 11/19/2009 10:08 AM BY: LISTER, PAUL
 XREFS: 45382X01 45382X02 45382X00
 IMAGES: PROJECTNAME: ---



- LEGEND:**
- MW-203 ⊕ MONITORING WELL LOCATION AND DESIGNATION
 - MW-122 ⊕ DEEP MONITORING WELL LOCATION AND DESIGNATION
 - MW-109 ⊕ EXISTING SURFACE WATER COMPLIANCE MONITORING WELL LOCATION AND DESIGNATION
 - MW-510 ⊕ SURFACE WATER COMPLIANCE MONITORING WELL LOCATION INSTALLED OCTOBER 2008
 - ⊕ MONITORING WELL LOCATION INSTALLED OCTOBER 2008
 - ⊕ STAFF GAUGE
 - 2001 AND 2003 SOIL EXCAVATIONS BELOW GROUNDWATER TABLE
 - LOWER YARD PROPERTY BOUNDARY
 - GENERAL GROUNDWATER FLOW DIRECTION AS DEFINED IN THE INTERIM ACTION REPORT
 - GROUNDWATER FLOW PATH DIRECTION AS DEFINED IN THE INTERIM ACTION REPORT
 - ▭ 2008 EXCAVATION BOUNDARIES
 - TOP OF GRAVEL BACKFILL ELEVATION (4-5 FEET AMSL)
 - TOP OF GRAVEL BACKFILL ELEVATION (5-6 FEET AMSL)
 - TOP OF GRAVEL BACKFILL ELEVATION (6-7 FEET AMSL)
 - TOP OF GRAVEL BACKFILL ELEVATION (9-11 FEET AMSL)

- NOTES:**
1. MONITORING WELLS MW-129R, MW-139R, MW-8R, AND MW-149R WERE ABANDONED DURING INTERIM ACTION AND REPLACED IN OCTOBER 2008.
 2. STAFF GAUGE D-1 RE-ESTABLISHED PRIOR TO JUNE 2009 SAMPLING EVENT.
 3. STAFF GAUGE D-4 WAS ESTABLISHED PRIOR TO JUNE 2009 SAMPLING EVENT TO REPLACE STAFF GAUGE D-7 WHICH IS NOT WITHIN THE WILLOW CREEK CHANNEL.
 4. STAFF GAUGES WERE RESURVEYED BY OTAK INCORPORATED JUNE 1, 2009. STAFF GAUGES WERE SURVEYED FROM TOP OF GAUGE.



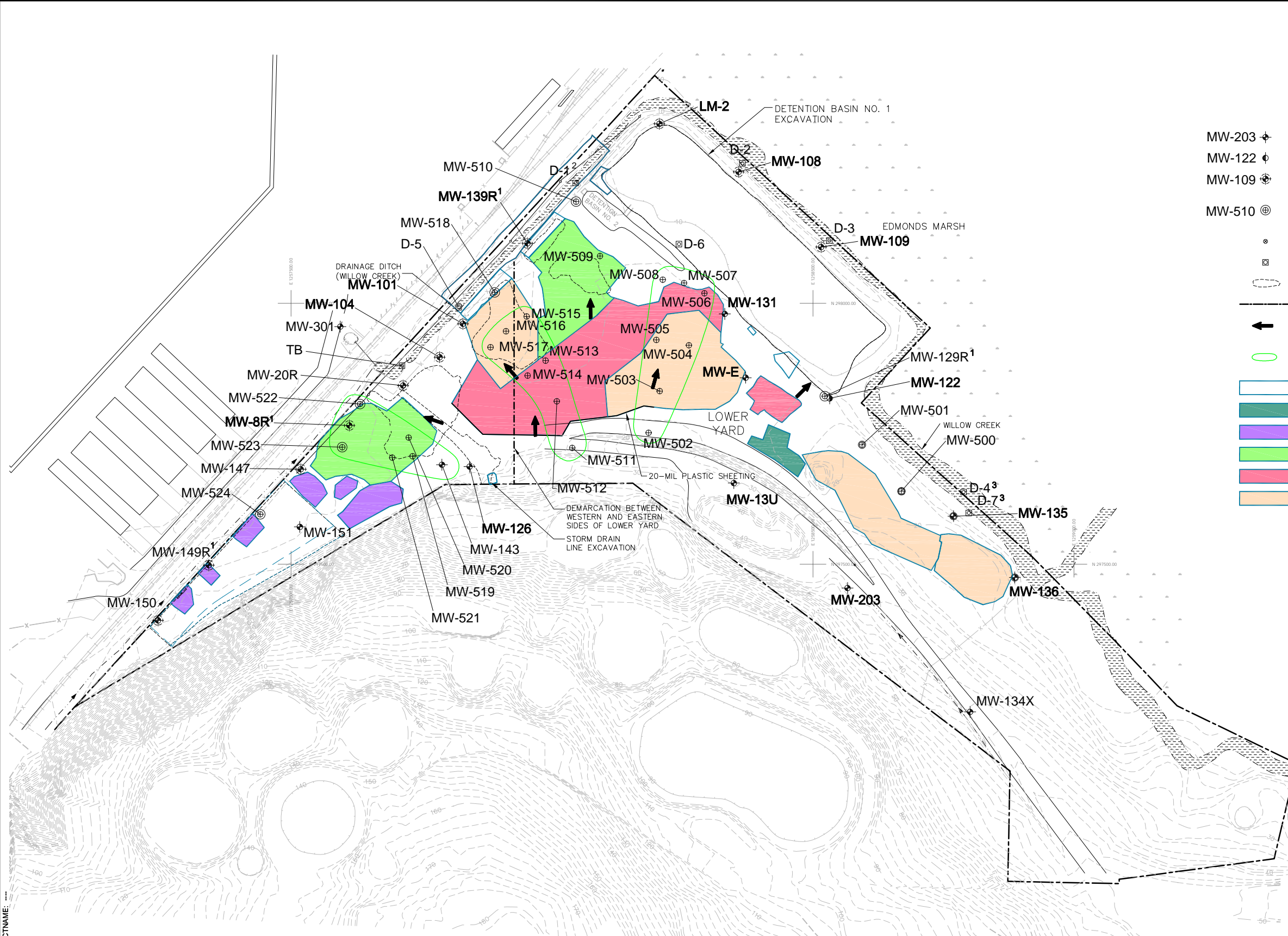
CHEVRON ENVIRONMENTAL MANAGEMENT COMPANY
 FORMER UNOCAL EDMONDS TERMINAL
 EDMONDS, WASHINGTON

TOP OF GRAVEL BACKFILL ELEVATIONS

ARCADIS

FIGURE 3

CITY: (TAMPA, FL) SYRACUSE, NY GROUP: ENVCAD DB: (J. RICHARDS), K. DAVIS, P. LISTER PW: R. ANDRESEN TM: S. ZORN TR: D. RASAR LXR: ONL OFF: REF
 G:\ENVCAD\SYRACUSE\ACT\B0045382\0002\DWG\45382B05.dwg LAYOUT: 45382B05.dwg LAYER: 17.05 (LMS TECH) PAGES: 17.05 (LMS TECH) PAGES: 17.05 (LMS TECH) PAGES: 17.05 (LMS TECH)
 XREFS: 45382X01 45382X02 45382X00
 PROJECTNAME: ---
 IMAGES: ---
 PLOTSTYLETABLE: PLTFULLCTB.PLOTSTYLETABLE: 11/19/2009 8:57 AM BY: LISTER, PAUL



- LEGEND:**
- MW-203 MONITORING WELL LOCATION AND DESIGNATION
 - MW-122 DEEP MONITORING WELL LOCATION AND DESIGNATION
 - MW-109 EXISTING SURFACE WATER COMPLIANCE MONITORING WELL LOCATION AND DESIGNATION
 - MW-510 SURFACE WATER COMPLIANCE MONITORING WELL LOCATION INSTALLED OCTOBER 2008
 - MONITORING WELL LOCATION INSTALLED OCTOBER 2008
 - STAFF GAUGE
 - 2001 AND 2003 SOIL EXCAVATIONS BELOW GROUNDWATER TABLE
 - LOWER YARD PROPERTY BOUNDARY
 - GENERAL GROUNDWATER FLOW DIRECTION AS DEFINED IN THE INTERIM ACTION REPORT
 - GROUNDWATER FLOW PATH DIRECTION AS DEFINED IN THE INTERIM ACTION REPORT
 - 2008 EXCAVATION BOUNDARIES
 - BOTTOM OF GRAVEL ELEVATION (8 - 9 FEET AMSL)
 - BOTTOM OF GRAVEL ELEVATION (6 - 4 FEET AMSL)
 - BOTTOM OF GRAVEL ELEVATION (4 - 2 FEET AMSL)
 - BOTTOM OF GRAVEL ELEVATION (2 - 0 FEET AMSL)
 - BOTTOM OF GRAVEL ELEVATION (<0 FEET AMSL)

- NOTES:**
1. MONITORING WELLS MW-129R, MW-139R, MW-8R, AND MW-149R WERE ABANDONED DURING INTERIM ACTION AND REPLACED IN OCTOBER 2008.
 2. STAFF GAUGE D-1 RE-ESTABLISHED PRIOR TO JUNE 2009 SAMPLING EVENT.
 3. STAFF GAUGE D-4 WAS ESTABLISHED PRIOR TO JUNE 2009 SAMPLING EVENT TO REPLACE STAFF GAUGE D-7 WHICH IS NOT WITHIN THE WILLOW CREEK CHANNEL.
 4. STAFF GAUGES WERE RESURVEYED BY OTAK INCORPORATED JUNE 1, 2009. STAFF GAUGES WERE SURVEYED FROM TOP OF GAUGE AND WATER LEVELS ARE NOW MEASURED FROM TOP DOWN TO WATER.
 5. 20 MIL PLASTIC SHEETING INSTALLED UPON COMPLETION OF PHASE I EXCAVATION. PLASTIC SHEETING REACHES TO APPROXIMATELY 10 FT BGS.

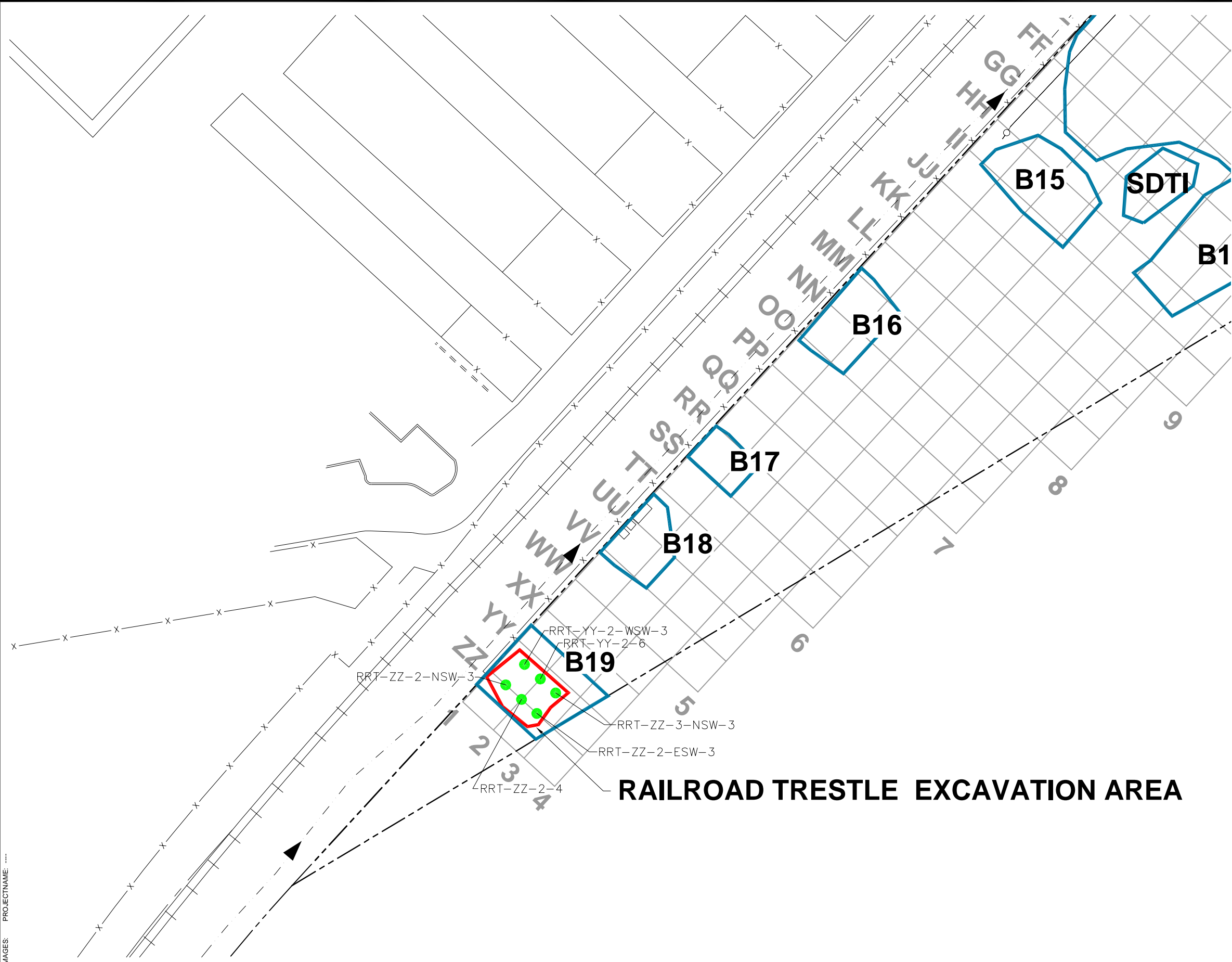
CHEVRON ENVIRONMENTAL MANAGEMENT COMPANY
 FORMER UNOCAL EDMONDS TERMINAL
EDMONDS, WASHINGTON

**BOTTOM OF GRAVEL
 BACKFILL ELEVATIONS**

ARCADIS

**FIGURE
 4**

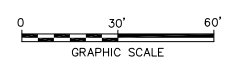
CITY: SYRACUSE, NY; GROUP: ENV/CAD; DB: DMW_PGL; PIC: J. VOGEL; PM: R. ANDRESEN; TR: D. RASAR; LVR: ON; OFF-REF: (FRZ); G:\ENV\CAD\SYRACUSE\ACT\18045382\0002\0002\DWG\45382G05.dwg; LAYOUT: 5; SAVED: 11/11/2009 1:00 PM; ACADVER: 17.05 (LMS TECH); PAGES: 17; PLOT: 11/11/2009 1:01 PM; BY: LISTER, PAUL; XREFS: 45382X05, 45382X01, 45382X02; PROJECTNAME: ...



- LEGEND:**
- LOWER YARD SITE BOUNDARY
 - DRAINAGE DITCH
 - PHASE I EXCAVATION AREAS
 - PHASE II EXCAVATION AREA
 - PHASE II CONFIRMATION SOIL SAMPLES WITH ANALYTE CONCENTRATIONS LESS THAN SOIL REMEDIATION LEVELS

NOTE:

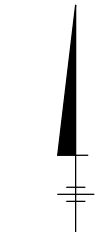
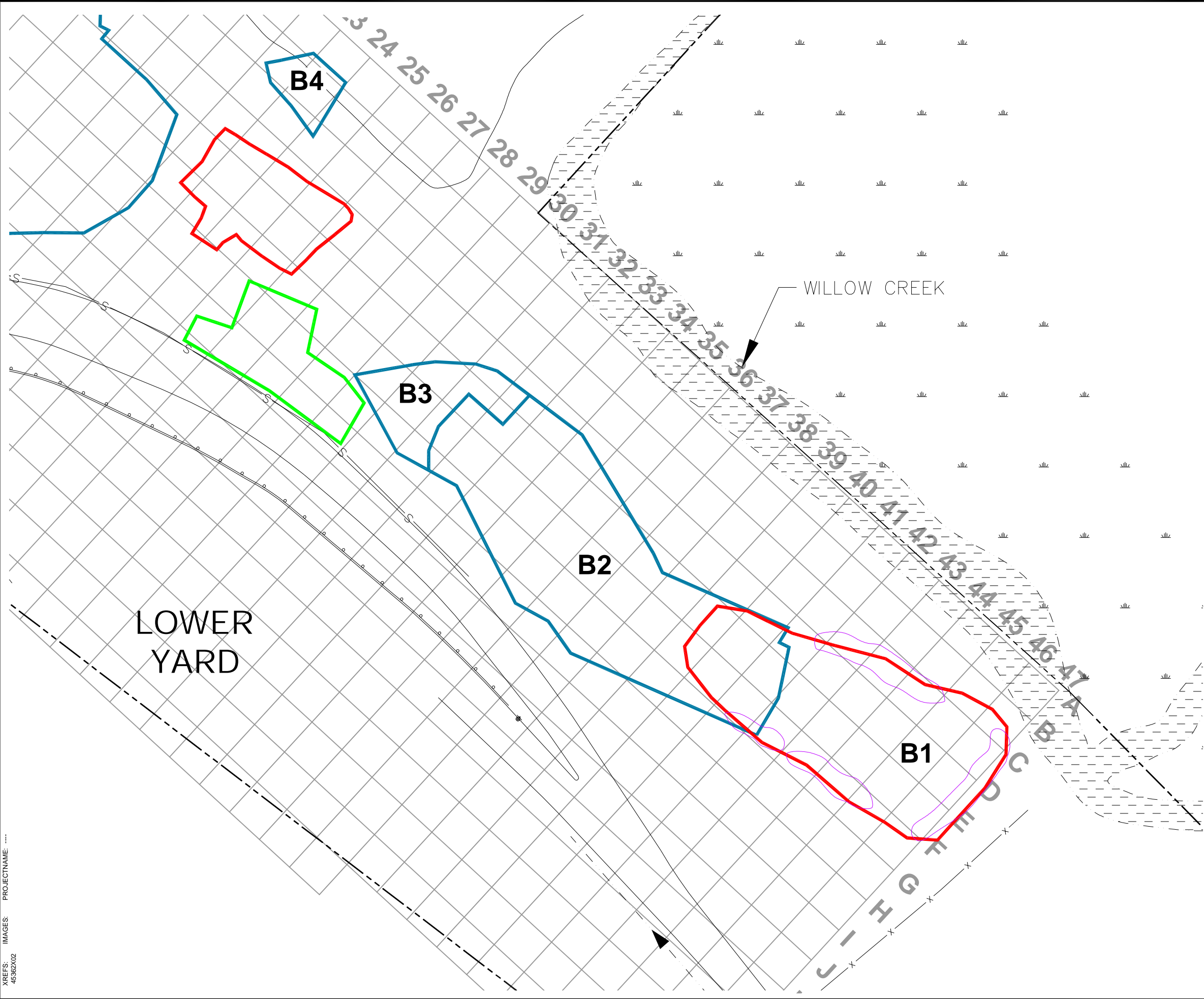
1. BASE MAP SUPPLIED BY SLR INTERNATIONAL CORP., APRIL 2007, AT A SCALE OF 1"=150'.



RAILROAD TRESTLE EXCAVATION AREA

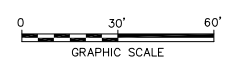
CHEVRON ENVIRONMENTAL MANAGEMENT COMPANY FORMER UNOCAL EDMONDS TERMINAL EDMONDS, WASHINGTON	
SOUTHWEST LOWER YARD PHASE II SOIL SAMPLE LOCATIONS	
	FIGURE 5

CITY: SYRACUSE, NY; GROUP: ENVCAD; DB: DMW_PGL; PIC: J. VOGEL; PM: R. ANDRESEN; TR: D. RASAR; LVR: ON; OFF-REF: (FRZ); G:\ENVCAD\SYRACUSE\ACT\19045382\0002\DWG\45382G03.dwg; LAYOUT: 7; SAVED: 11/9/2009 11:46 AM; ACADVER: 17.05 (LMS TECH); PAGES: 17; PAGESETUP: 17.05 (LMS TECH); PLOTSTYLETABLE: PLT\FULLCTB; PLOTTED: 11/9/2009 11:47 AM; BY: LISTER, PAUL; XREFS: 45382X02; IMAGES: PROJECTNAME



- LEGEND:
- LOWER YARD SITE BOUNDARY
 - DRAINAGE DITCH
 - PHASE I EXCAVATION AREAS
 - SHALLOW PHASE I EXCAVATION AREA
 - PHASE II EXCAVATION AREAS
 - AREAS OF GEOPHYSICAL SURVEY DETECTIONS

NOTE:
1. BASE MAP SUPPLIED BY SLR INTERNATIONAL CORP., APRIL 2007, AT A SCALE OF 1"=150'.

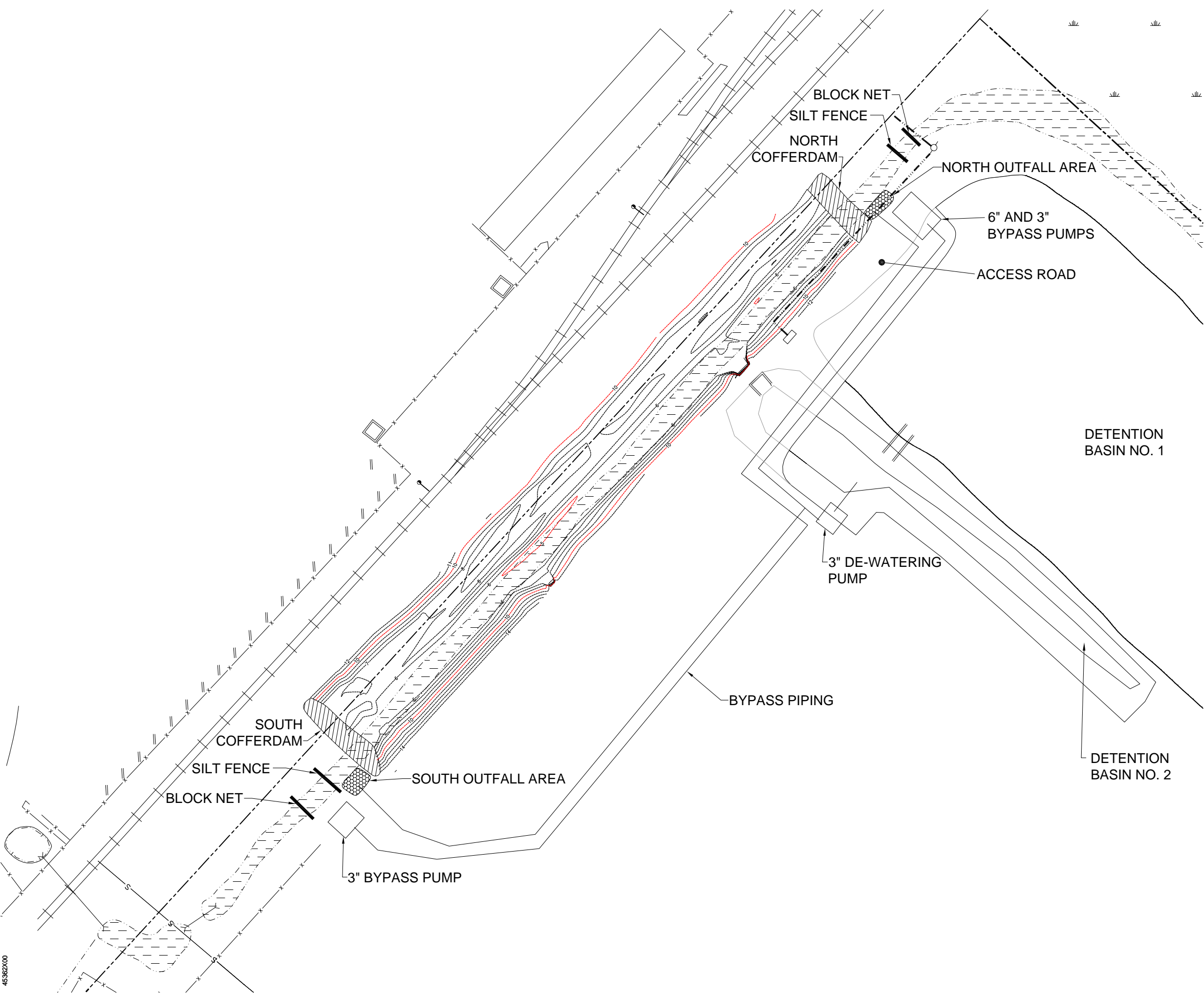


CHEVRON ENVIRONMENTAL MANAGEMENT COMPANY
FORMER UNOCAL EDMONDS TERMINAL
EDMONDS, WASHINGTON

**SOUTHEAST LOWER YARD
GEOPHYSICAL SURVEY RESULTS**

FIGURE
7

CITY: SYRACUSE, NY GROUP: ENV/CAD DB: K. DAVIS, P. LISTER PIC: J. VOGEELEY PM: R. ANDRESEN TR: D. RASAR LVR: ON="OFF=REF (FRZ)
 G:\ENV\CAD\SYRACUSE\ACT\15045382\0002\DWG\45382G06.dwg LAYOUT: 9 SAVED: 11/11/2009 12:52 PM ACADVER: 17.05 (LMS TECH) PAGES: 17
 XREFS: 45382X00 PROJECTNAME: --- PLOTTED: 11/11/2009 12:52 PM BY: LISTER, PAUL

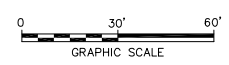


LEGEND:

- LOWER YARD SITE BOUNDARY
- DRAINAGE DITCH

NOTE:

1. BASE MAP SUPPLIED BY SLR INTERNATIONAL CORP., APRIL 2007, AT A SCALE OF 1"=150'.

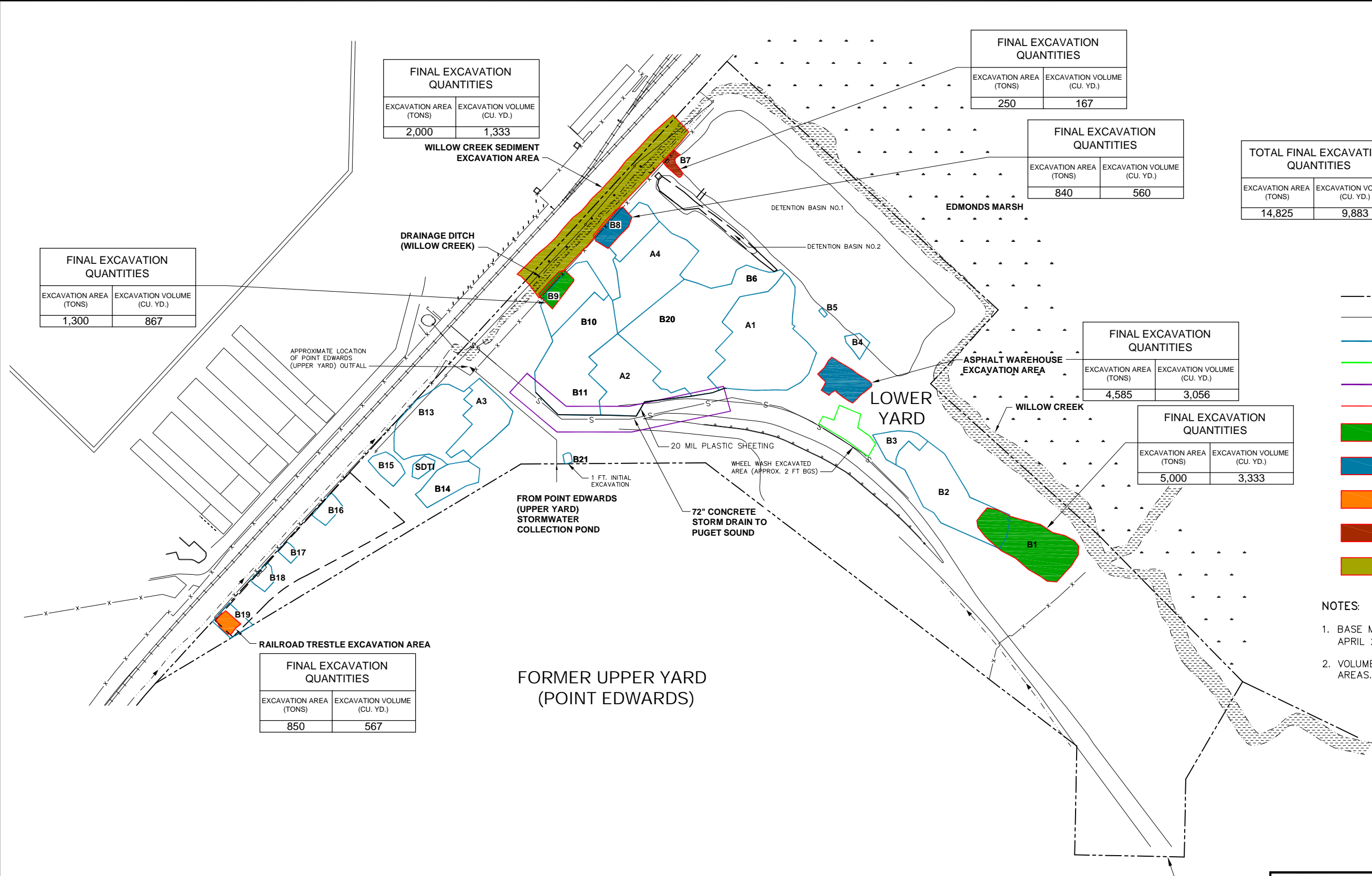


CHEVRON ENVIRONMENTAL MANAGEMENT COMPANY
 FORMER UNOCAL EDMONDS TERMINAL
 EDMONDS, WASHINGTON

**WILLOW CREEK
 SEDIMENT EXCAVATION AREA**

**FIGURE
 9**

CITY: SYRACUSE, NY GROUP: ENV/CAD DB: K. DAVIS, P. LISTER PIC: J. VOGEELEY PM: R. ANDRESEN TR: D. BASAR LVR: ON="OFF-REF (FRZ)
 G:\ENV/CAD\SYRACUSE\ACT\B0045382\0002\0000\DWG\G+45382G07.dwg LAYOUT: 10SAVED: 11/19/2009 1:35 PM ACADVER: 17.05 (LMS TECH) PAGES: 17
 XREFS: 45382X02 45382X00
 IMAGES: PROJECTNAME: ---
 PLTFULLCTBPLOTTED: 11/19/2009 1:35 PM BY: LISTER, PAUL



FINAL EXCAVATION QUANTITIES	
EXCAVATION AREA (TONS)	EXCAVATION VOLUME (CU. YD.)
1,300	867

FINAL EXCAVATION QUANTITIES	
EXCAVATION AREA (TONS)	EXCAVATION VOLUME (CU. YD.)
2,000	1,333

FINAL EXCAVATION QUANTITIES	
EXCAVATION AREA (TONS)	EXCAVATION VOLUME (CU. YD.)
850	567

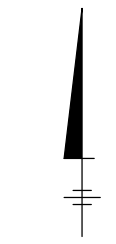
FINAL EXCAVATION QUANTITIES	
EXCAVATION AREA (TONS)	EXCAVATION VOLUME (CU. YD.)
250	167

FINAL EXCAVATION QUANTITIES	
EXCAVATION AREA (TONS)	EXCAVATION VOLUME (CU. YD.)
840	560

FINAL EXCAVATION QUANTITIES	
EXCAVATION AREA (TONS)	EXCAVATION VOLUME (CU. YD.)
4,585	3,056

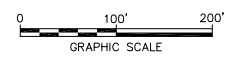
FINAL EXCAVATION QUANTITIES	
EXCAVATION AREA (TONS)	EXCAVATION VOLUME (CU. YD.)
5,000	3,333

TOTAL FINAL EXCAVATION QUANTITIES	
EXCAVATION AREA (TONS)	EXCAVATION VOLUME (CU. YD.)
14,825	9,883



- LEGEND:**
- LOWER YARD SITE BOUNDARY
 - DRAINAGE DITCH
 - PHASE I EXCAVATION AREAS
 - SHALLOW PHASE I EXCAVATION AREA
 - WSDOT STORMWATER LINE AREA
 - PHASE II EXCAVATION AREAS
 - FINAL EXTENTS OF SOIL EXCAVATION (APPROXIMATELY 12' BGS)
 - FINAL EXTENTS OF SOIL EXCAVATION (APPROXIMATELY 10' BGS)
 - FINAL EXTENTS OF SOIL EXCAVATION (APPROXIMATELY 6' BGS)
 - FINAL EXTENTS OF SOIL EXCAVATION (APPROXIMATELY 5' BGS)
 - FINAL EXTENTS OF SEDIMENT REMOVAL (APPROXIMATELY 1' BGS)

- NOTES:**
1. BASE MAP SUPPLIED BY SLR INTERNATIONAL CORP., APRIL 2007, AT A SCALE OF 1"=150'.
 2. VOLUME AND AREA DATA CORRESPOND TO SHADED AREAS.

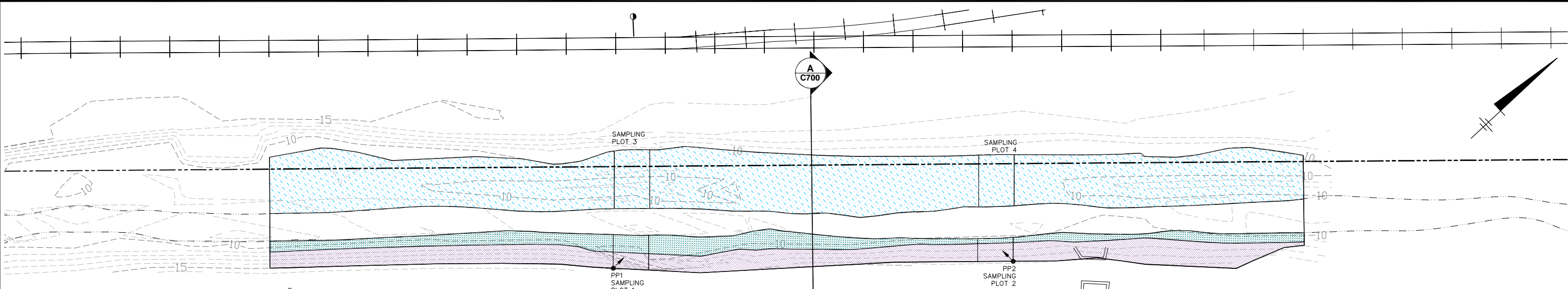


CHEVRON ENVIRONMENTAL MANAGEMENT COMPANY
 FORMER UNOCAL EDMONDS TERMINAL
 EDMONDS, WASHINGTON

PHASE II FINAL EXCAVATION AREAS AND VOLUMES

FIGURE 10

CITY: SYRACUSE, NY GROUP: ENV/CAD DB: K. DAVIS, P. LISTER PIC: J. VOGEELEY PM: R. ANDRESEN TR: D. RASAR LVR: ONL-OFF-REF (FRZ)
 G:\ENV\CAD\SYRACUSE\ACT\18045382\0002\0002\DWG\45382G08.dwg LAYOUT: 11 SAVER: 11/11/2009 12:56 PM ACADVER: 17.05 (LWS TECH) PAGES: 17 PLOT: 11/11/2009 12:58 PM BY: LISTER, PAUL
 XREFS: 45382X02 45382X05 45382X11 45382X00



LEGEND:

- LOWER YARD SITE BOUNDARY
- WILLOW CREEK
- x- FENCE LINE
- 20- MAJOR GROUND ELEVATION CONTOUR
- 10- MINOR GROUND ELEVATION CONTOUR
- [Blue hatched] EM - EMERGENT WETLAND PLANTING AREA (BNSF RIGHT-OF-WAY)
- [Green hatched] EM - EMERGENT WETLAND PLANTING AREA (EDMONDS TERMINAL)
- [Purple hatched] FF - FLOODPLAIN FOREST PLANTING AREA (EDMONDS TERMINAL)

1" = 20'

EM - EMERGENT WETLAND (CREEK MARGIN - BNSF RIGHT-OF-WAY) 0.218 ACRES

SPECIES	COMMON NAME	NUMBER	SIZE	DENSITY (#/ACRE)	SPACING
•	Carex obnupta	1,200	BARE ROOT	2,800	3.9' O.C.
•	Juncus balticus	350	BARE ROOT	800	7.3' O.C.
•	Schoenoplectus acutus	350	BARE ROOT	800	7.3' O.C.
*	Scirpus microcarpus	250	BARE ROOT	600	8.5' O.C.

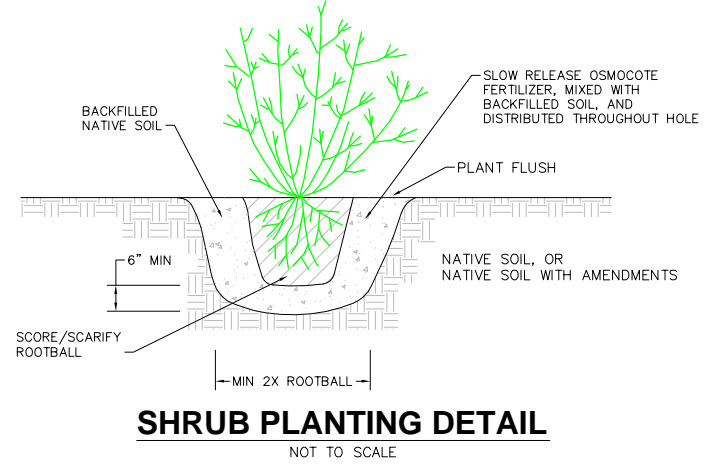
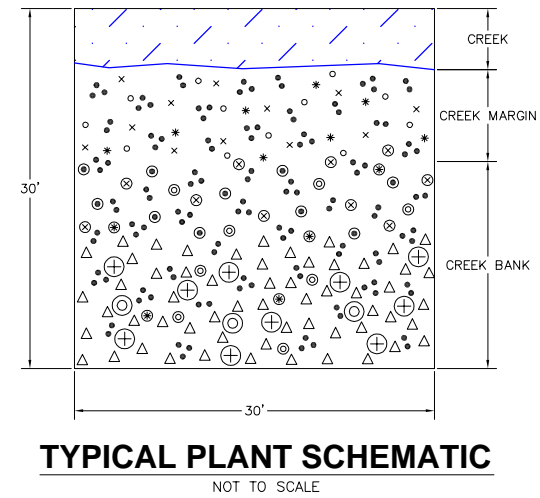
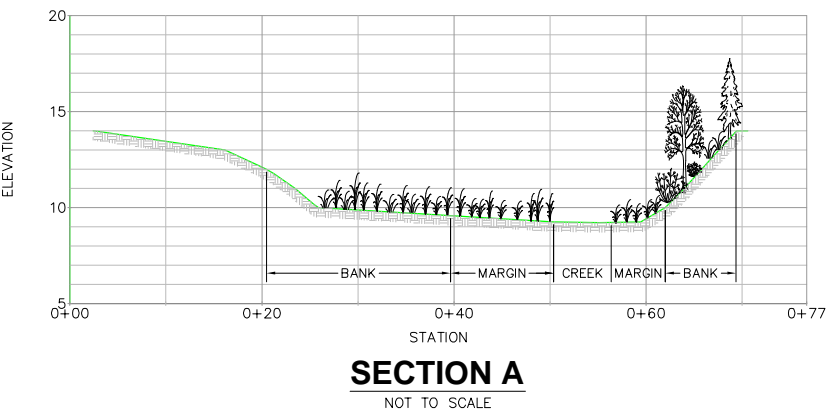
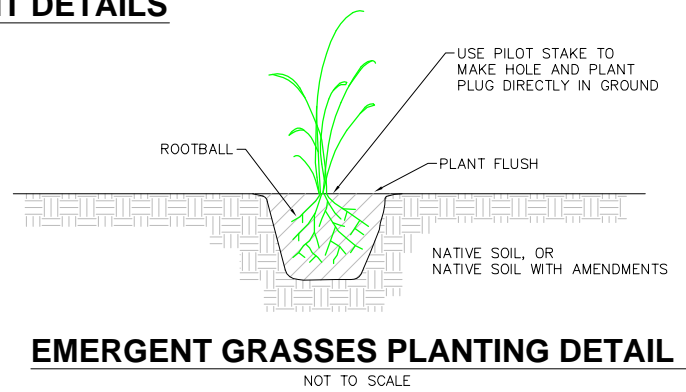
EM - EMERGENT WETLAND (CREEK MARGIN - EDMONDS TERMINAL) 0.043 ACRES

SPECIES	COMMON NAME	NUMBER	SIZE	DENSITY (#/ACRE)	SPACING
•	Carex obnupta	400	BARE ROOT	4,650	3.1' O.C.
•	Juncus balticus	150	BARE ROOT	1,750	5' O.C.
•	Schoenoplectus acutus	100	BARE ROOT	1,200	6' O.C.
*	Scirpus microcarpus	100	BARE ROOT	1,200	6' O.C.

FF - FLOODPLAIN FOREST (CREEK BANK - EDMONDS TERMINAL) 0.07 ACRES

SPECIES	COMMON NAME	NUMBER	SIZE	DENSITY (#/ACRE)	SPACING
TREES					
⊕	Alnus rubra	51	1 GAL	725	7.6' O.C.
⊙	Pinus contorta var. contorta	18	1 GAL	255	13' O.C.
SHRUBS					
⊙	Salix lucida ssp. lasiandra	51	1 GAL	725	7.6' O.C.
⊙	Salix sitchensis	51	1 GAL	725	7.6' O.C.
⊙	Cornus sericea spp. sericea	42	1 GAL	600	8.5' O.C.
⊙	Lonicera involucrata	27	1 GAL	400	10.5' O.C.
GROUND COVER					
•	Carex obnupta	800	BARE ROOT	5,700	2.8' O.C.
△	Deschampsia cespitosa	810	BARE ROOT	5,800	2.7' O.C.

PLANT DETAILS



SCALES AS INDICATED

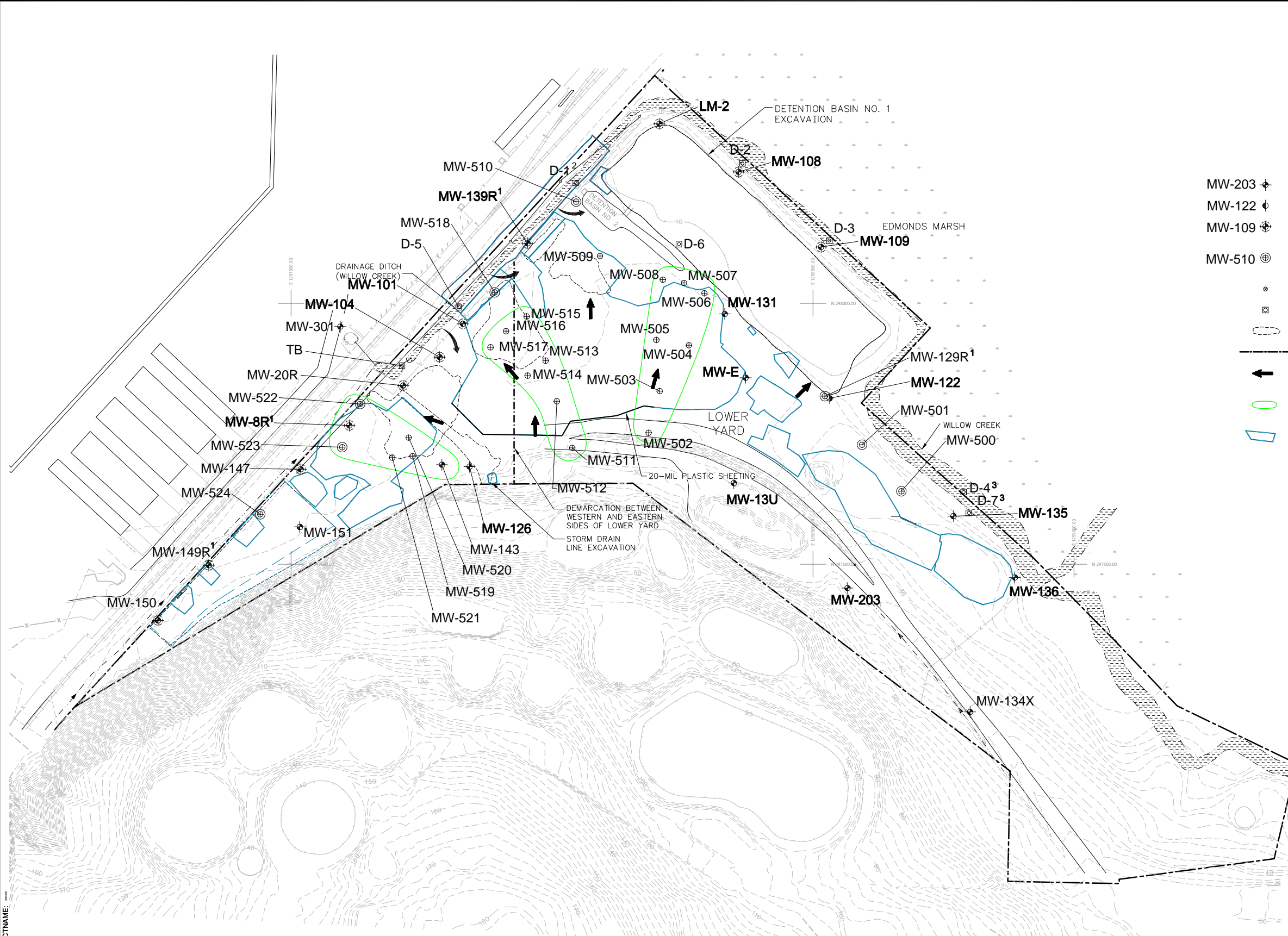
CHEVRON ENVIRONMENTAL MANAGEMENT COMPANY
FORMER UNOCAL EDMONDS TERMINAL
EDMONDS, WASHINGTON

AS-BUILT PLANTING PLAN AND DETAILS

ARCADIS

FIGURE 11

CITY: (TAMPA, FL) SYRACUSE, NY GROUP: ENVCAD DB: (J. RICHARDS), K. DAVIS, P. LISTER PW: R. ANDRESEN TM: S. ZORN TR: D. RASAR LXR: ONL OFF: REF
 G:\ENVCAD\SYRACUSE\ACT\B0045382\0002\DWG\45382B06.dwg LAYOUT: 12SAVED: 11/19/2009 9:15 AM ACADVER: 17.05 (LMS TECH) PAGES: 17 PLOTSTYLETABLE: PLT\FULL.CTB PLOTTED: 11/19/2009 9:15 AM BY: LISTER, PAUL
 XREFS: 45382X01
 45382X02
 45382X00



LEGEND:

- MW-203 ⊕ MONITORING WELL LOCATION AND DESIGNATION
- MW-122 ⊕ DEEP MONITORING WELL LOCATION AND DESIGNATION
- MW-109 ⊕ EXISTING SURFACE WATER COMPLIANCE MONITORING WELL LOCATION AND DESIGNATION
- MW-510 ⊕ SURFACE WATER COMPLIANCE MONITORING WELL LOCATION INSTALLED OCTOBER 2008
- ⊕ MONITORING WELL LOCATION INSTALLED OCTOBER 2008
- ⊕ STAFF GAUGE
- 2001 AND 2003 SOIL EXCAVATIONS BELOW GROUNDWATER TABLE
- LOWER YARD PROPERTY BOUNDARY
- GENERAL GROUNDWATER FLOW DIRECTION AS DEFINED IN THE INTERIM ACTION REPORT
- GROUNDWATER FLOW PATH DIRECTION AS DEFINED IN THE INTERIM ACTION REPORT
- ▭ 2008 EXCAVATION BOUNDARIES

NOTES:

1. MONITORING WELLS MW-129R, MW-139R, MW-8R, AND MW-149R WERE ABANDONED DURING INTERIM ACTION AND REPLACED IN OCTOBER 2008.
2. STAFF GAUGE D-1 RE-ESTABLISHED PRIOR TO JUNE 2009 SAMPLING EVENT.
3. STAFF GAUGE D-4 WAS ESTABLISHED PRIOR TO JUNE 2009 SAMPLING EVENT TO REPLACE STAFF GAUGE D-7 WHICH IS NOT WITHIN THE WILLOW CREEK CHANNEL.
4. STAFF GAUGES WERE RESURVEYED BY OTAK INCORPORATED JUNE 1, 2009. STAFF GAUGES WERE SURVEYED FROM TOP OF GAUGE AND WATER LEVELS ARE NOW MEASURED FROM TOP DOWN TO WATER.
5. 20-MIL PLASTIC SHEETING INSTALLED UPON COMPLETION OF PHASE I EXCAVATION. PLASTIC SHEETING REACHES TO APPROXIMATELY 10 FT BGS.



CHEVRON ENVIRONMENTAL MANAGEMENT COMPANY
 FORMER UNOCAL EDMONDS TERMINAL
 EDMONDS, WASHINGTON

**GROUNDWATER FLOW PATH AREAS AND
 MONITORING WELL LOCATIONS**



FIGURE
12