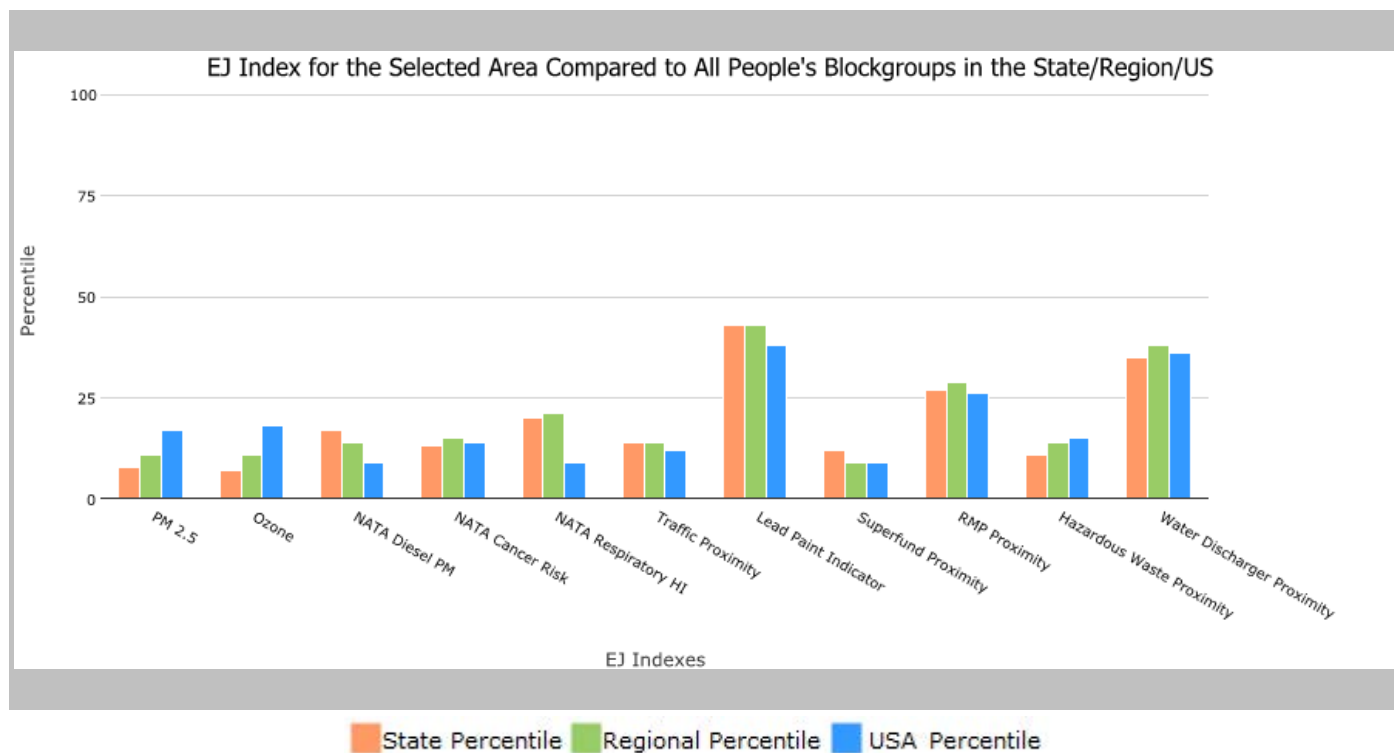


p: 530330316034,530330320033,530330320104,530330316042,530330320111, WASHINGTON, EPA

Approximate Population: 8,465

Input Area (sq. miles): 7.81

Selected Variables	State Percentile	EPA Region Percentile	USA Percentile
EJ Indexes			
EJ Index for PM2.5	8	11	17
EJ Index for Ozone	7	11	18
EJ Index for NATA* Diesel PM	17	14	9
EJ Index for NATA* Air Toxics Cancer Risk	13	15	14
EJ Index for NATA* Respiratory Hazard Index	20	21	9
EJ Index for Traffic Proximity and Volume	14	14	12
EJ Index for Lead Paint Indicator	43	43	38
EJ Index for Superfund Proximity	12	9	9
EJ Index for RMP Proximity	27	29	26
EJ Index for Hazardous Waste Proximity ⁺	11	14	15
EJ Index for Water Discharger Proximity	35	38	36

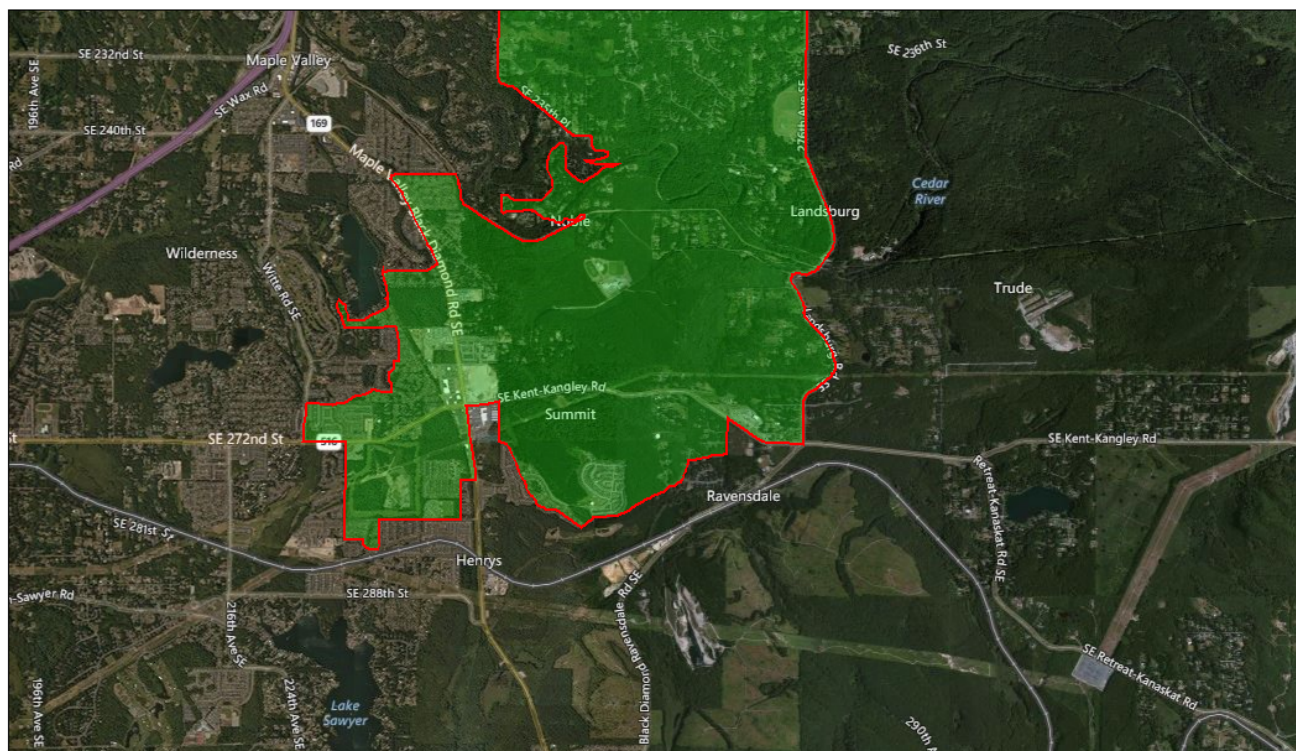


This report shows the values for environmental and demographic indicators and EJSCREEN indexes. It shows environmental and demographic raw data (e.g., the estimated concentration of ozone in the air), and also shows what percentile each raw data value represents. These percentiles provide perspective on how the selected block group or buffer area compares to the entire state, EPA region, or nation. For example, if a given location is at the 95th percentile nationwide, this means that only 5 percent of the US population has a higher block group value than the average person in the location being analyzed. The years for which the data are available, and the methods used, vary across these indicators. Important caveats and uncertainties apply to this screening-level information, so it is essential to understand the limitations on appropriate interpretations and applications of these indicators. Please see EJSCREEN documentation for discussion of these issues before using reports.

(group: 530330316034,530330320033,530330320104,530330316042,530330320111, WASHINGTON, EPA Region 9)

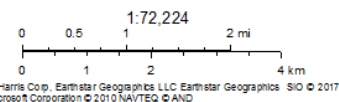
Approximate Population: 8,465

Input Area (sq. miles): 7.81



January 5, 2017

Known Geography



Sites reporting to EPA	
Superfund NPL	0
Hazardous Waste Treatment, Storage, and Disposal Facilities (TSDF)	0
National Pollutant Discharge Elimination System (NPDES)	0

EJSCREEN Report (Version 2016)

cgrou: 530330316034,530330320033,530330320104,530330316042,530330320111, WASHINGTON, EPA Region 9

Approximate Population: 8,465

Input Area (sq. miles): 7.81

Selected Variables	Value	State Avg.	%ile in State	EPA Region Avg.	%ile in EPA Region	USA Avg.	%ile in USA
Environmental Indicators							
Particulate Matter (PM 2.5 in $\mu\text{g}/\text{m}^3$)	6.9	7.42	28	7.53	26	9.32	7
Ozone (ppb)	34.7	35.2	66	37.9	39	47.4	7
NATA* Diesel PM ($\mu\text{g}/\text{m}^3$)	0.715	1.39	34	1.05	<50th	0.937	<50th
NATA* Cancer Risk (lifetime risk per million)	30	40	28	39	<50th	40	<50th
NATA* Respiratory Hazard Index	1.6	2.8	28	2.8	<50th	1.8	<50th
Traffic Proximity and Volume (daily traffic count/distance to road)	160	440	58	380	59	590	58
Lead Paint Indicator (% Pre-1960 Housing)	0.035	0.24	21	0.23	21	0.3	22
Superfund Proximity (site count/km distance)	0.11	0.2	53	0.14	66	0.13	68
RMP Proximity (facility count/km distance)	0.088	0.4	25	0.39	26	0.43	23
Hazardous Waste Proximity* (facility count/km distance)	0.057	0.091	52	0.086	50	0.11	41
Water Discharger Proximity (facility count/km distance)	0.049	0.19	12	0.23	13	0.31	9
Demographic Indicators							
Demographic Index	12%	29%	10	29%	8	36%	11
Minority Population	17%	29%	35	26%	42	37%	36
Low Income Population	7%	30%	7	33%	5	35%	6
Linguistically Isolated Population	0%	4%	42	3%	46	5%	45
Population With Less Than High School Education	2%	10%	17	10%	15	14%	11
Population Under 5 years of age	7%	6%	63	6%	62	6%	64
Population over 64 years of age	6%	13%	16	13%	15	14%	16

* The National-Scale Air Toxics Assessment (NATA) is EPA's ongoing, comprehensive evaluation of air toxics in the United States. EPA developed the NATA to prioritize air toxics, emission sources, and locations of interest for further study. It is important to remember that NATA provides broad estimates of health risks over geographic areas of the country, not definitive risks to specific individuals or locations. More information on the NATA analysis can be found at: <https://www.epa.gov/national-air-toxics-assessment>.

+ The hazardous waste environmental indicator and the corresponding EJ index will appear as N/A if there are no hazardous waste facilities within 50 km of a selected location.

For additional information, see: www.epa.gov/environmentaljustice

EJSCREEN is a screening tool for pre-decisional use only. It can help identify areas that may warrant additional consideration, analysis, or outreach. It does not provide a basis for decision-making, but it may help identify potential areas of EJ concern. Users should keep in mind that screening tools are subject to substantial uncertainty in their demographic and environmental data, particularly when looking at small geographic areas. Important caveats and uncertainties apply to this screening-level information, so it is essential to understand the limitations on appropriate interpretations and applications of these indicators. Please see EJSCREEN documentation for discussion of these issues before using reports. This screening tool does not provide data on every environmental impact and demographic factor that may be relevant to a particular location. EJSCREEN outputs should be supplemented with additional information and local knowledge before taking any action to address potential EJ concerns.