

# Lower Duwamish Cleanup Sites Update



Photo by John Monnat.

## CONTACTS & INFORMATION

### Public Involvement

#### Coordinator:

Amy White

Amelia.White@ecy.wa.gov

425-649-7052

**For more information about site cleanups and source control, visit our website:**

[http://www.ecy.wa.gov/programs/tcp/sites\\_brochure/lower\\_duwamish/lower\\_duwamish\\_hp.html](http://www.ecy.wa.gov/programs/tcp/sites_brochure/lower_duwamish/lower_duwamish_hp.html)

**Join our email list for regular updates!**

<https://listserv.wa.gov/cgi-bin/wa?A0=DUWAMISH-RIVER-UPDATES>

**FSID # 42927743**

**CSID # 1643**

## Cleaning up contaminated sites to reduce pollution of the Lower Duwamish Waterway

Ecology is leading the effort to clean up sources of contamination from the land area surrounding the Lower Duwamish Waterway (LDW) Superfund Site.

This is part of our commitment to source control – finding the sources and extent of contamination, then taking actions to stop or reduce them before they reach the LDW (river). We must control these sources of pollution sufficiently before EPA can start their cleanup of the river sediments.

Cleaning up contaminated sites is a key part of source control. Source control also includes a variety of other actions, such as business inspections, site investigation and cleanup, controlling stormwater runoff, coordination between agencies, and education.

Contaminants in the soil and groundwater in the land area around the river pose a risk to human health and the environment. They can find their way into the river through groundwater discharges, storm runoff, erosion and other pathways.

Source control is crucial to the success of EPA's in-waterway cleanup. The long-term goal is to minimize recontamination of the river sediment and restore water quality in the river.

## We are making progress!

Ecology is actively managing 21 sites through our formal cleanup process. Our Toxics Cleanup Program is responsible for 16 formal cleanup sites, and we plan to add several more to the list soon. Our Hazardous Waste and Toxics Reduction Program is responsible for 5 sites. Many other sites are being cleaned up under our Voluntary Cleanup Program.

This information sheet focuses on cleanup sites managed by Ecology's Toxics Cleanup Program.



**2016 Source Control Strategy:**

To read Ecology's Source Control Strategy, visit:

<https://fortress.wa.gov/ecy/gsp/DocViewer.ashx?did=56204>

**Special accommodations:**

To request ADA accommodation for disabilities, or printed materials in a format for the visually impaired, call Ecology at 360-407-7668 or visit <http://www.ecy.wa.gov/accessibility.html>.

Persons with impaired hearing may call Washington Relay Service at 711.

Persons with speech disability may call TTY at 877-833-6341.

**Document review locations:**

**Seattle Public Library, South Park Branch**

8604 Eighth Ave. S  
Seattle, WA 98108

Phone: 206-615-1688

Hours: Mon-Tue, 1pm-8pm

Wed-Sat, 11am-6pm

Sun, 1pm-5pm

**Ecology NW Regional Office**

3190 160th Ave SE  
Bellevue, WA 98008

*Please call for appointment.*

Phone: 425-649-7190

Hours: Mon-Fri, 8am-5pm

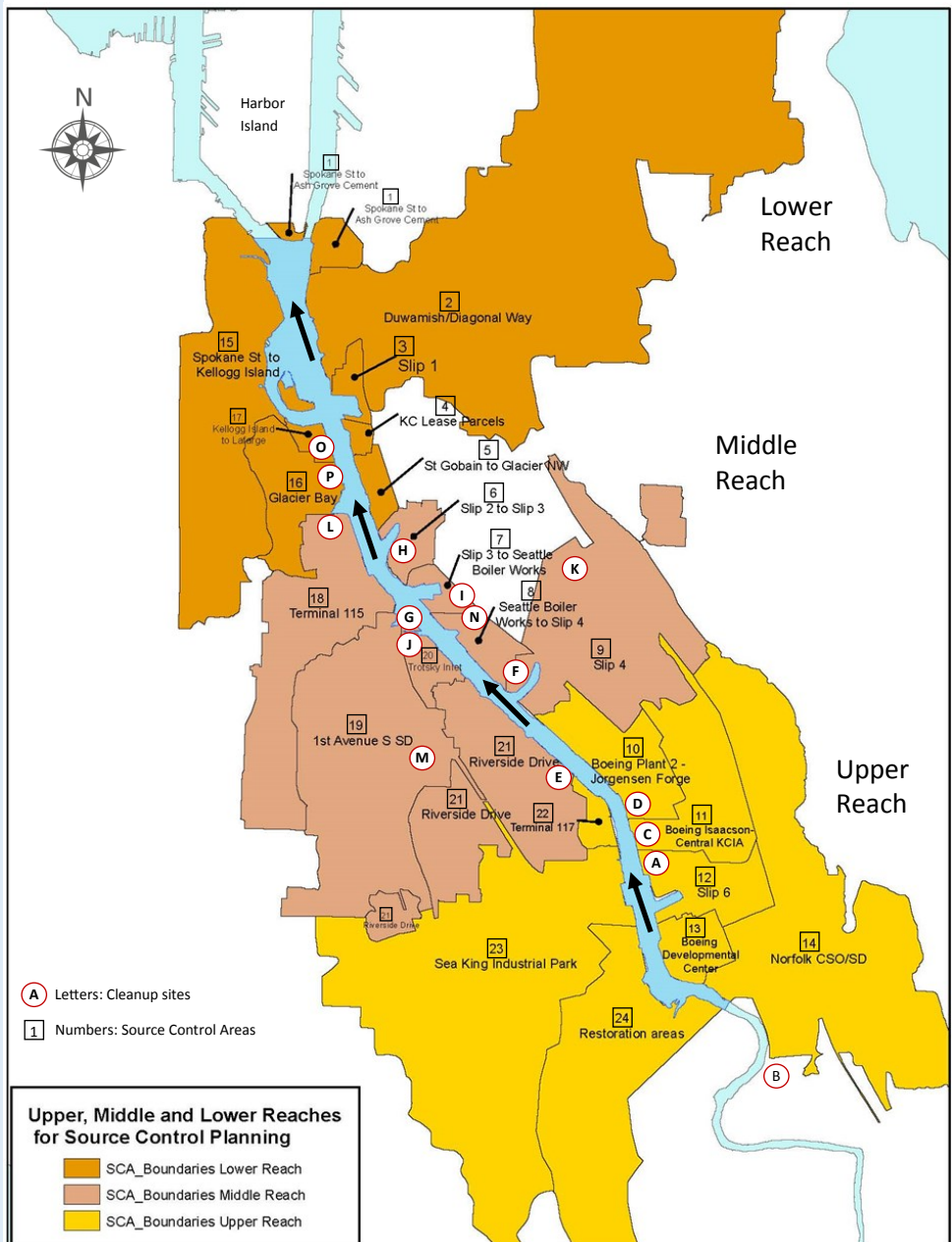
**Source control proceeds from upstream to downstream**

Ecology has determined the most efficient way to manage site cleanups for source control is an upstream to downstream approach. This reduces the problem of contamination from an upstream site moving into a downstream site that has already been cleaned up.

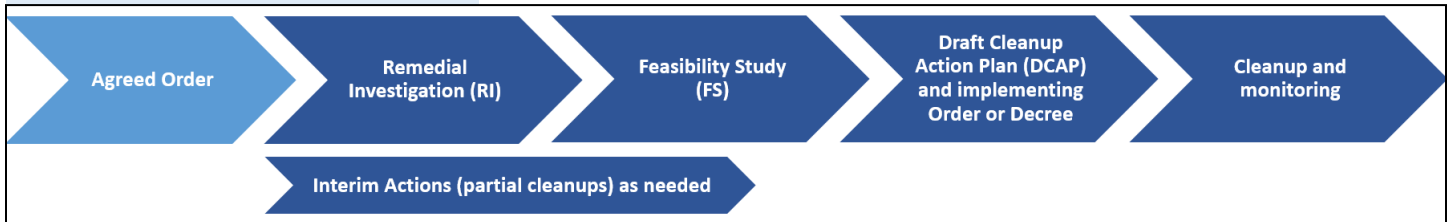
The land area around the river is divided into 24 Source Control Areas (SCAs) based on storm drainage. Contaminated sites are located within these areas.

The SCAs are grouped into Upper, Middle, and Lower Reaches. The river flows northward, so the Upper Reach (upstream) starts in Tukwila, and the Lower Reach (downstream) ends at the southern tip of Harbor Island.

While Ecology will prioritize site cleanups in the Upper Reach, we will continue to move forward with our work in the Middle and Lower Reaches.



## The Cleanup Process



	Site Name	Agreed Order	Remedial Investigation	Feasibility Study	Cleanup Action Plan	Cleanup	Interim Action
UPPER	Ⓐ 8801 East Marginal Way S	2006, 2008	2011	In progress	In development		
	Ⓑ Boeing Field Chevron	2015	In progress				
	Ⓒ Boeing Isaacson Thompson	2010	2014	In progress			
	Ⓓ Jorgensen Forge	2007, 2015*	In progress				2014
	Ⓔ South Park Marina	Likely 2017					
MIDDLE	Ⓕ Crowley (8 <sup>th</sup> Avenue)	2009	In progress				
	Ⓖ Douglas Management	2011	In progress				
	Ⓗ Duwamish Marine Center	2011	In progress				
	Ⓙ Fox Avenue Building	1991, 2009	2011	2012	Agreed Order 2012	In progress	2009
	Ⓚ Industrial Container	2011	In progress				
	Ⓛ N Boeing Field/GT Steam Plant	2008	In progress				2011
	Ⓛ N Terminal 115	2011	In progress				
	Ⓜ South Park Landfill	2009	In progress	In progress	In development		2014, 2016
Ⓝ Whitehead Tyee	2016	Workplan in development				Workplan in development	
LOWER	Ⓞ Duwamish Shipyard	2010	In progress				
	Ⓟ Glacier Northwest	2009	In progress				

\* Enforcement Order



UPPER REACH



8801 E Marginal Way S, Tukwila

**8801 East Marginal Way S**

**Agreed Order:** 2006 (sediment), 2008 (upland)

**Status:** Draft Feasibility Study and Cleanup Action Plan under review.

**Previous uses:** Truck manufacturing.

**Current uses:** Auction of damaged vehicles.

**Contaminants of concern:** Polychlorinated biphenyls (PCBs), polycyclic aromatic hydrocarbons (PAHs), volatile organic compounds (VOCs), phenols, phthalates, oil, metals.



10805 E Marginal Way S, Tukwila

**Boeing Field Chevron**

**Agreed Order:** 2015

**Status:** Remedial Investigation underway.

**Previous uses:** Service station with underground storage of gasoline.

**Current uses:** Service station with underground storage of gasoline.

**Contaminants of concern:** VOCs, oil.



8701 E Marginal Way S, Tukwila

**Boeing Isaacson Thompson**

**Agreed Order:** 2010

**Status:** Feasibility Study underway.

**Previous uses:** Aircraft manufacturing

**Current uses:** Aircraft manufacturing

**Contaminants of concern:** PCBs, PAHs, VOCs, furans, phthalates, oil, metals.



8531 E Marginal Way S, Seattle

**Jorgensen Forge**

**Agreed Order:** 2007

**Enforcement Order:** 2015

**Status:** Remedial Investigation underway.

**Previous uses:** Fabrication of structural steel, tractor and road equipment; manufacturing of Navy vessels; steel distribution.

**Current uses:** Fabricating specialized large-scale metal parts.

**Contaminants of concern:** PCBs, VOCs, oil, metals.

**Interim Action:** Removed contaminated soil from an access road area.





8604 Dallas Avenue S, Seattle

### South Park Marina

**Agreed Order:** Expected 2017

**Status:** Agreed Order negotiations underway.

**Previous uses:** Resort and marina; drum reconditioning—cleaning and recycling of used storage drums, some of which may have contained hazardous wastes.

**Current uses:** Marina with boat storage and repair.

**Contaminants of concern:** PCBs, PAHs, VOCs, dioxins, furans, phthalates, pesticides, oil, metals.

## MIDDLE REACH



7400 8th Avenue S, Seattle

### Crowley Marine Services

**Agreed Order:** 2009

**Status:** Draft Remedial Investigation Report under review.

**Previous uses:** Manufacturing of pipe, chain, hydraulic equipment, and concrete; machinery and scrap iron storage; sawmill, lumber distribution, creosote treatment.

**Current uses:** Transloading—loading contaminated soils and dredge sediments from trucks and barges onto rail cars.

**Contaminants of concern:** PAHs, metals.



7100 1st Avenue S, Seattle

### Douglas Management Dock

**Agreed Order:** 2009

**Status:** Draft Remedial Investigation Report under review.

**Previous uses:** Sand and gravel batch plant; school bus parking and maintenance.

**Current uses:** Storage of equipment and shipping containers.

**Contaminants of concern:** PCBs, oil, metals.



6365 1st Avenue S, Seattle

### Duwamish Marine Center

**Agreed Order:** 2011

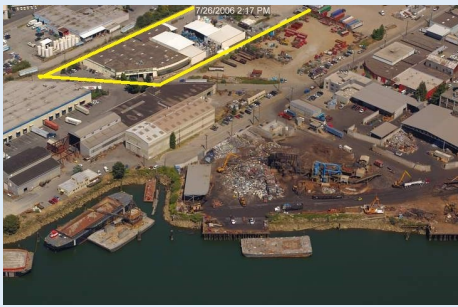
**Status:** Remedial Investigation underway.

**Previous uses:** Shipyard—repair and maintenance of floating vessels; junk dealer; construction services; barge shipping terminal.

**Current uses:** Tug and barge operations; metal fabrication.

**Contaminants of concern:** PCBs, PAHs, oil, metals.





6900 Fox Avenue S, Seattle

## Fox Avenue Building

**Agreed Order:** 1991 & 2009 (investigation), 2012 (cleanup)

**Status:** Majority of cleanup complete.

**Previous uses:** Chain manufacturing; chemical and petroleum repackaging and distribution.

**Current uses:** Chemical distribution.

**Contaminants of concern:** VOCs, dioxins, furans, oil.

**Interim Actions:** Biotreatment to reduce contamination in groundwater.



7152 1st Avenue S, Seattle

## Industrial Container Services

**Agreed Order:** 2010

**Status:** Draft Remedial Investigation Report under review.

**Previous uses:** Drum reconditioning—cleaning and recycling of used storage drums, some of which may have contained hazardous wastes.

**Current uses:** Drum reconditioning.

**Contaminants of concern:** PCBs, PAHs, VOCs, pesticides, oil, metals.



7370 E Marginal Way S, Seattle

## North Boeing Field—Georgetown Steam Plant

**Agreed Order:** 2008

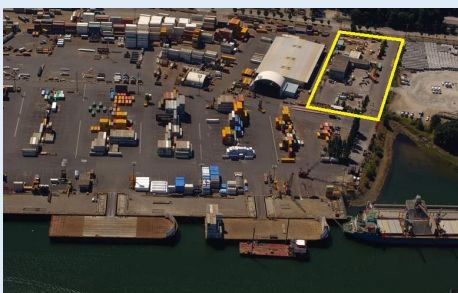
**Status:** Draft Remedial Investigation Report in revision.

**Previous uses:** Electrical power generation; aircraft manufacturing, maintenance, and research.

**Current uses:** Aircraft manufacturing and research; museum.

**Contaminants of concern:** PCBs, PAHs, oil, VOCs, semi-volatile organic compounds (SVOCs), jet fuel, metals.

**Interim Actions:** Contaminated soil removed around Georgetown Steam Plant, some other areas capped. Contaminated soil removed around fence line and adjacent to the Georgetown Steam Plant fuel tank area.



8200 2nd Avenue S, Seattle

## North Terminal 115

**Agreed Order:** 2011

**Status:** Remedial Investigation underway.

**Previous uses:** Tin reclamation.

**Current uses:** Lumber distribution; vehicle storage.

**Contaminants of concern:** PAHs, SVOCs, oil, metals.





6000 W Marginal Way SW, Seattle

## South Park Landfill

**Agreed Order:** 2009

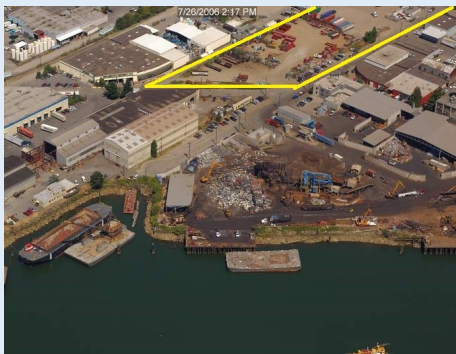
**Status:** Remedial Investigation/Feasibility Study, Draft Cleanup Action Plan, and Partial Consent Decree to be finalized in 2017.

**Previous uses:** Landfill; auto wrecking yard.

**Current uses:** Solid waste transfer station; school bus parking.

**Contaminants of concern:** VOCs, landfill gas, oil, metals.

**Interim Actions:** Landfill capped and systems installed for monitoring and control of landfill gas and surface water.



730 S Myrtle Street, Seattle

## Whitehead Tyee

**Agreed Order:** 2016

**Status:** Interim Action Workplan to be finalized in 2017.

**Previous uses:** Lumber finishing, refuse burning, and wood treating.

**Current uses:** Metal recycling.

**Contaminants of concern:** PCBs, PAHs, VOCs, pentachlorophenol, oil, metals.

**Interim Action:** Contaminated soil to be removed before installing stormwater pipes and treatment.

## LOWER REACH



5658 W Marginal Way SW, Seattle

## Duwamish Shipyard

**Agreed Order:** 2010

**Status:** Draft Remedial Investigation Report under review.

**Previous uses:** Shipyard—repair and maintenance of floating vessels.

**Current uses:** Storage of shipping containers; truck access.

**Contaminants of concern:** PCBs, PAHs, SVOCs, tributyl tin, dioxins, furans, oil, metals.



5900 W Marginal Way SW, Seattle

## Glacier Northwest

**Agreed Order:** 2009

**Status:** Draft Remedial Investigation Report under review.

**Previous uses:** Manufacturing activated charcoal, resins, glues, sodium pentachlorophenate, pentachlorophenol.

**Current uses:** Cement storage and distribution.

**Contaminants of concern:** Pentachlorophenol, dioxins, metals.





DEPARTMENT OF  
**ECOLOGY**  
State of Washington

PO Box 47600

Olympia, WA 98504-7600

## Lower Duwamish Cleanup Sites Update



### Información sobre la limpieza ambiental del Duwamish:

Si le gustaría obtener este documento en español, favor de comunicarse con Gretchen Newman al 360-407-6097 o [preguntas@ecy.wa.gov](mailto:preguntas@ecy.wa.gov).

### Thông tin về công tác làm sạch môi trường Duwamish:

Nếu quý vị muốn nhận tài liệu này bằng tiếng Việt hoặc cần thêm thông tin, xin liên hệ ông Liêm Nguyễn: 360-407-6955, điện thư: [Lngu461@ecy.wa.gov](mailto:Lngu461@ecy.wa.gov).

### Want to get more involved with efforts to clean up the Duwamish River?

Contact the Duwamish River Cleanup Coalition/Technical Advisory Group at [contact@duwamishcleanup.org](mailto:contact@duwamishcleanup.org), (206) 954-0218, or visit <http://duwamishcleanup.org/>