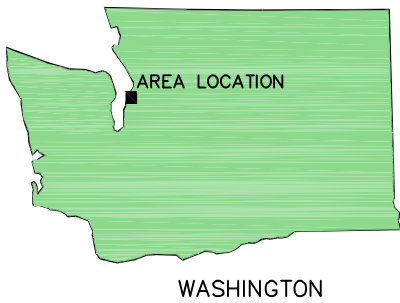
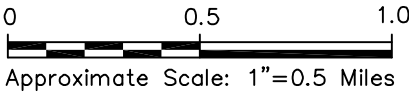


CITY: (TAMPA, FL) \SRACUSE, NY GROUP: ENVCAD DB: JAR, PGL, PML, D, RASAR LYN: ONE*OFF*REF*
 G:\ENVCAD\SRACUSE\ACT1804562\000\00006\DWG\4562\NT1.DWG LAYOUT: 1. SAVED: 2/13/2009 9:11 AM ACADVER: 17.05 (LMS TECH) PAGES: 1. PLOT: PLT, FULL, CTB PLOTTED: 2/13/2009 9:11 AM BY: LISTER, PAUL
 XREFS: IMAGES: PROJECTNAME: Edmond-E.dwg Edmond-W.dwg



REFERENCE: USGS QUADS., 7.5 MIN. SERIES (TOPOGRAPHIC) - EDMONDS EAST, WASH. AND EDMONDS WEST, WASH.

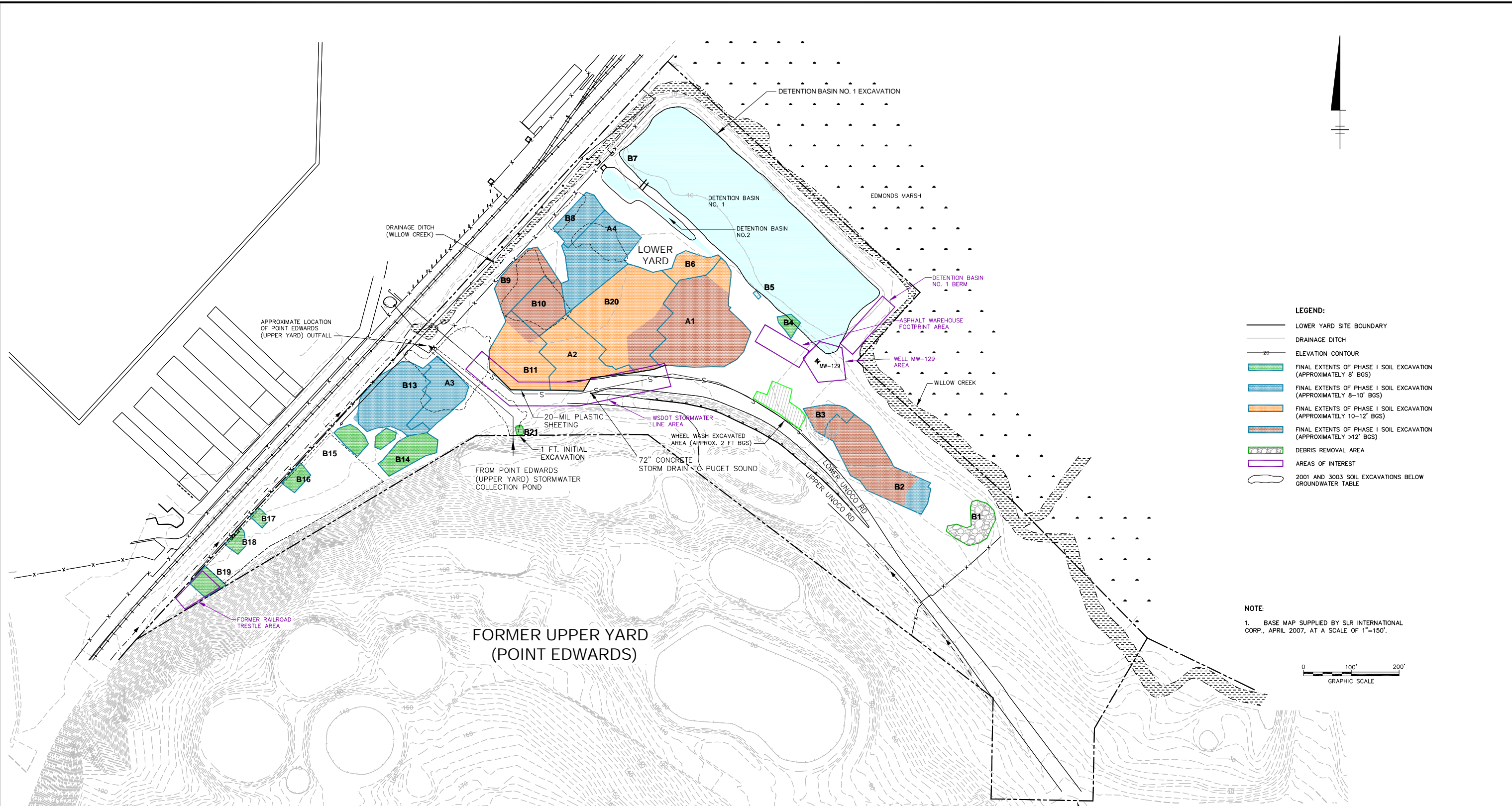


WASHINGTON



<p>CHEVRON ENVIRONMENTAL MANAGEMENT COMPANY FORMER UNOCAL TERMINAL EDMONDS, WASHINGTON</p>	
<p>SITE LOCATION MAP</p>	
	<p>FIGURE 1</p>

CITY: (SEATTLE, WA) SYRACUSE, NY GROUP: ENVCAD DB: (C, DOTSON), P. LISTER PP: J. VOGUELEY PM: R. ANDRESEN TR: D. RASAR LVR: ONL-OFF-REF. (FRZ)
G:\ENVCAD\SYRACUSE\ACT\B0045\382\0002\0000\2\DWG\45382\B03.dwg LAYOUT: 25/SAVED: 11/19/2009 9:46 AM ACADVER: 17.05 (LMS TECH) PAGESETUP: ###PLOTSTYLETABLE: PLT\FULLCTB.PLOT: 11/19/2009 1:32 PM BY: LISTER, PAUL
XREFS: 45382X01 45382X02 PROJECTNAME:
IMAGES:



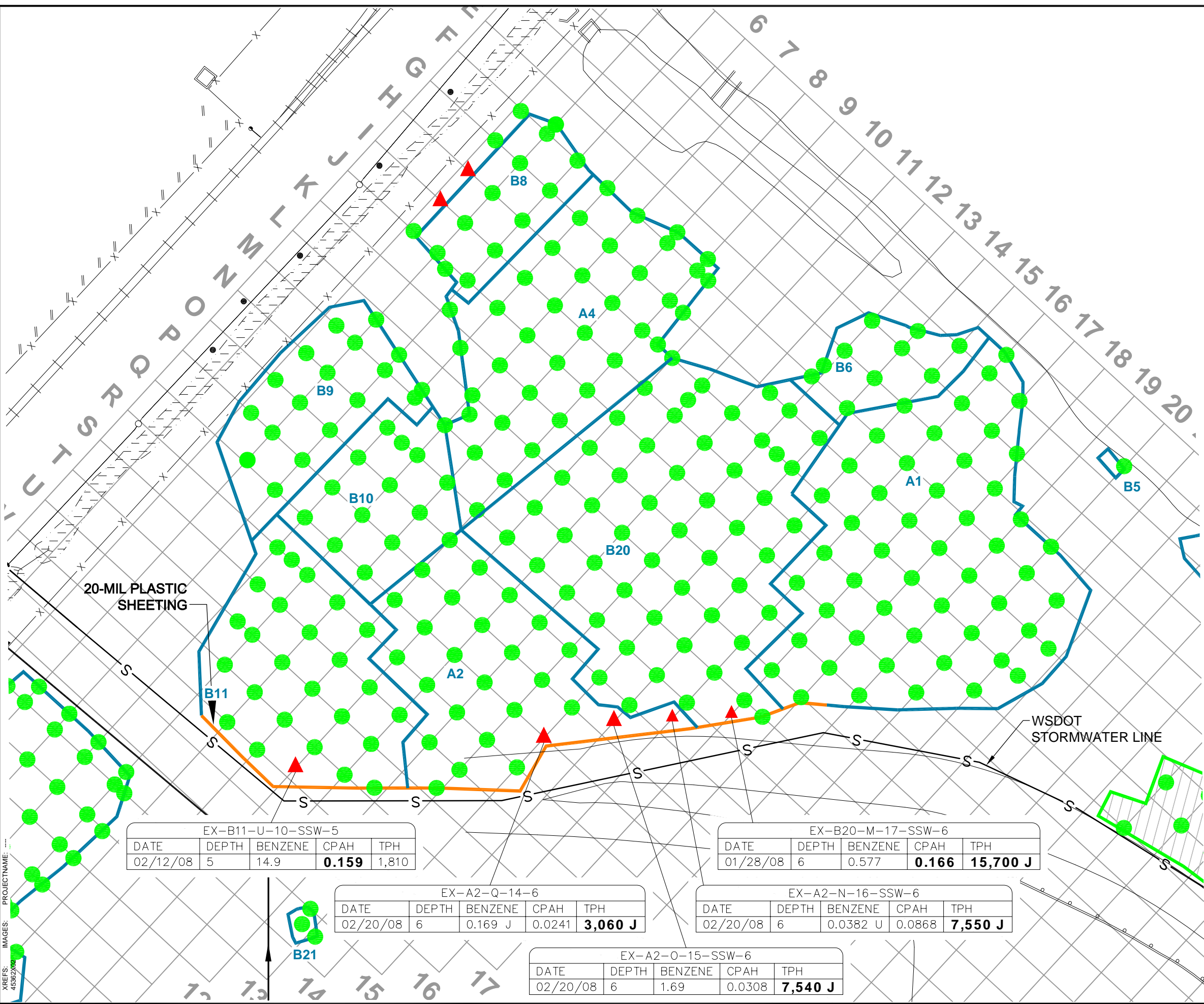
CHEVRON ENVIRONMENTAL MANAGEMENT COMPANY
FORMER UNOCAL TERMINAL
EDMONDS, WASHINGTON

**PHASE I COMPLETION
SITE LAYOUT MAP**

ARCADIS

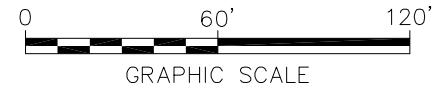
FIGURE
2

CITY: (SEATTLE, WA) SYRACUSE, NY GROUP: ENVCAD DR: H. CLARDY, P. LISTER PIC: VOGELEY, J. TM: S. ZORN TR: D. RASAR LVR: ON=OFF-REF (FRZ)
 G:\ENVCAD\SYRACUSE\ACT\B0045382\0002\DWG\45382B04.DWG LAYOUT: 3\$AVED: 11/19/2009 10:26 AM ACADVER: 17.0\$ (LMS TECH) PAGES: 17 PLOTSTYLETABLE: PLT\FULL.CTB PLOTTED: 11/19/2009 10:26 AM BY: LISTER, PAUL



- LEGEND:**
- LOWER YARD SITE BOUNDARY
 - - - DRAINAGE DITCH
 - CONFIRMATION SOIL SAMPLES WITH ANALYTE CONCENTRATIONS LESS THAN SOIL REMEDIATION LEVELS
 - ▲ CONFIRMATION SOIL SAMPLES WITH ONE OR MORE ANALYTE CONCENTRATIONS EXCEEDING SOIL REMEDIATION LEVELS
 - ▭ FINAL EXTENTS OF PHASE I SOIL EXCAVATION
 - ▨ TRUCK WHEEL WASH REMOVAL AREA

- NOTES:**
1. BASE MAP SUPPLIED BY SLR INTERNATIONAL CORP., APRIL 2007, AT A SCALE OF 1"=150'.
 2. CPAH = CARCINOGENIC POLYNUCLEAR AROMATIC HYDROCARBONS, ADJUSTED FOR TOXICITY.
 3. TPH = TOTAL PETROLEUM HYDROCARBONS.
 4. U = THE COMPOUND WAS ANALYZED FOR BUT NOT DETECTED. THE ASSOCIATED VALUE IS THE COMPOUND QUANTITATION LIMIT.
 5. J = AN ESTIMATED VALUE.
 6. ALL DATA REPORTED AS MILLIGRAMS PER KILOGRAM (mg/kg).
 7. SAMPLE DEPTHS REPORTED AS FEET BELOW GROUND SURFACE (ft bgs).
 8. BOLDED DATA INDICATES CONCENTRATIONS GREATER THAN APPLICABLE SITE CULS/RELS.



EX-B11-U-10-SSW-5

DATE	DEPTH	BENZENE	CPAH	TPH
02/12/08	5	14.9	0.159	1,810

EX-B20-M-17-SSW-6

DATE	DEPTH	BENZENE	CPAH	TPH
01/28/08	6	0.577	0.166	15,700 J

EX-A2-Q-14-6

DATE	DEPTH	BENZENE	CPAH	TPH
02/20/08	6	0.169 J	0.0241	3,060 J

EX-A2-N-16-SSW-6

DATE	DEPTH	BENZENE	CPAH	TPH
02/20/08	6	0.0382 U	0.0868	7,550 J

EX-A2-O-15-SSW-6

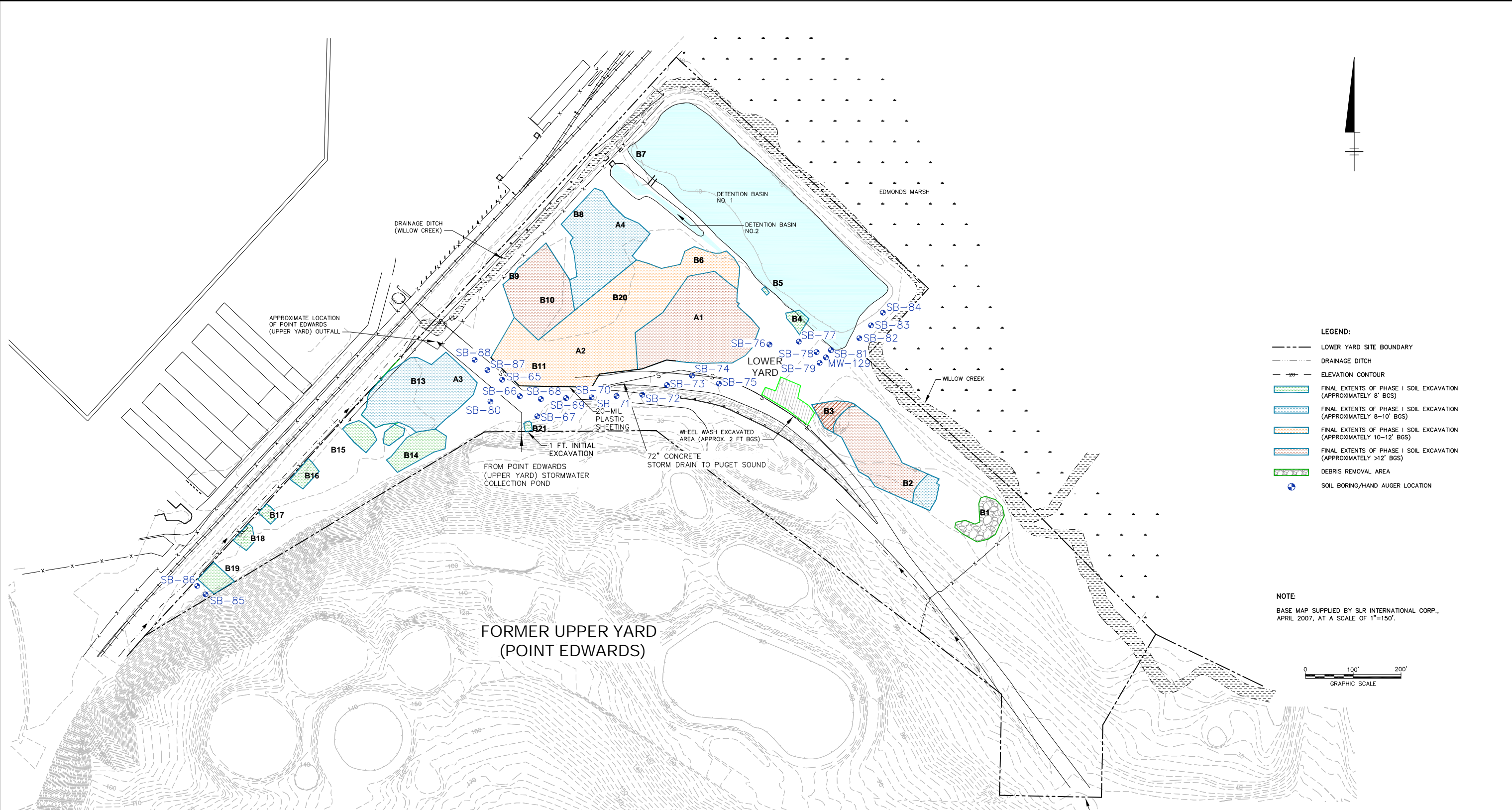
DATE	DEPTH	BENZENE	CPAH	TPH
02/20/08	6	1.69	0.0308	7,540 J

CHEVRON ENVIRONMENTAL MANAGEMENT COMPANY
 FORMER UNOCAL TERMINAL
 EDMONDS, WASHINGTON

**PHASE I CENTRAL LOWER YARD
 SAMPLE LOCATIONS**

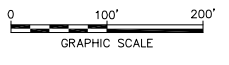
FIGURE
3

CITY: SYRACUSE, NY; GROUP: ENVCAD; DB: C. DOTSON, P. LISTER; PP: J. VOGELY; PM: R. ANDRESEN; TR: D. RASAR; Lyr: ON=OFF-REF; (FRZ)
 G:\ENVCAD\SYRACUSE\ACT\B0045382\DWG\45382B01.dwg; LAYOUT: 45382; 11/19/2009 10:42 AM; ACADVER: 17.05 (LMS TECH); PAGES: 17; PLOTSTYLETABLE: PLTFULL.CTB; PLOTTED: 11/19/2009 10:42 AM BY: LISTER, PAUL



- LEGEND:**
- LOWER YARD SITE BOUNDARY
 - - - DRAINAGE DITCH
 - 20- ELEVATION CONTOUR
 - [Light Blue Box] FINAL EXTENTS OF PHASE I SOIL EXCAVATION (APPROXIMATELY 8' BGS)
 - [Medium Blue Box] FINAL EXTENTS OF PHASE I SOIL EXCAVATION (APPROXIMATELY 8-10' BGS)
 - [Orange Box] FINAL EXTENTS OF PHASE I SOIL EXCAVATION (APPROXIMATELY 10-12' BGS)
 - [Dark Blue Box] FINAL EXTENTS OF PHASE I SOIL EXCAVATION (APPROXIMATELY >12' BGS)
 - [Green Box] DEBRIS REMOVAL AREA
 - [Blue Circle with Crosshair] SOIL BORING/HAND AUGER LOCATION

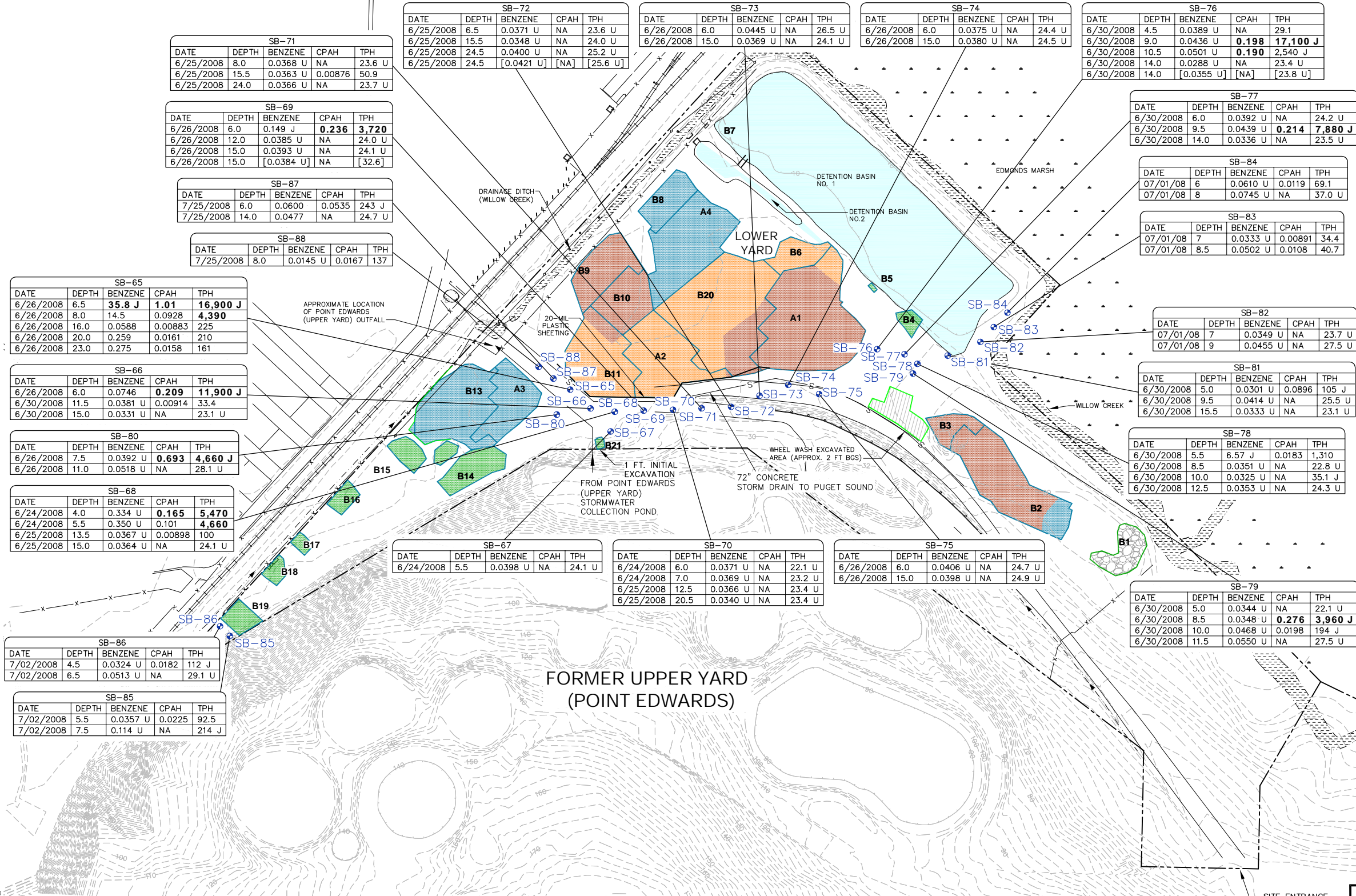
NOTE:
 BASE MAP SUPPLIED BY SLR INTERNATIONAL CORP., APRIL 2007, AT A SCALE OF 1"=150'.



CHEVRON ENVIRONMENTAL MANAGEMENT COMPANY
 FORMER UNOCAL TERMINAL
 EDMONDS, WASHINGTON

**JUNE-JULY 2008
 SOIL BORING
 LOCATION MAP**

**FIGURE
 4**



SB-71				
DATE	DEPTH	BENZENE	CPAH	TPH
6/25/2008	8.0	0.0368 U	NA	23.6 U
6/25/2008	15.5	0.0363 U	0.00876	50.9
6/25/2008	24.0	0.0366 U	NA	23.7 U

SB-69				
DATE	DEPTH	BENZENE	CPAH	TPH
6/26/2008	6.0	0.149 J	0.236	3,720
6/26/2008	12.0	0.0385 U	NA	24.0 U
6/26/2008	15.0	0.0393 U	NA	24.1 U
6/26/2008	15.0	[0.0384 U]	NA	[32.6]

SB-87				
DATE	DEPTH	BENZENE	CPAH	TPH
7/25/2008	6.0	0.0600	0.0535	24.3 J
7/25/2008	14.0	0.0477	NA	24.7 U

SB-88				
DATE	DEPTH	BENZENE	CPAH	TPH
7/25/2008	8.0	0.0145 U	0.0167	137

SB-65				
DATE	DEPTH	BENZENE	CPAH	TPH
6/26/2008	6.5	35.8 J	1.01	16,900 J
6/26/2008	8.0	14.5	0.0928	4,390
6/26/2008	16.0	0.0588	0.00883	225
6/26/2008	20.0	0.259	0.0161	210
6/26/2008	23.0	0.275	0.0158	161

SB-66				
DATE	DEPTH	BENZENE	CPAH	TPH
6/26/2008	6.0	0.0746	0.209	11,900 J
6/30/2008	11.5	0.0381 U	0.00914	33.4
6/30/2008	15.0	0.0331 U	NA	23.1 U

SB-80				
DATE	DEPTH	BENZENE	CPAH	TPH
6/26/2008	7.5	0.0392 U	0.693	4,660 J
6/26/2008	11.0	0.0518 U	NA	28.1 U

SB-68				
DATE	DEPTH	BENZENE	CPAH	TPH
6/24/2008	4.0	0.334 U	0.165	5,470
6/24/2008	5.5	0.350 U	0.101	4,660
6/25/2008	13.5	0.0367 U	0.00898	100
6/25/2008	15.0	0.0364 U	NA	24.1 U

SB-86				
DATE	DEPTH	BENZENE	CPAH	TPH
7/02/2008	4.5	0.0324 U	0.0182	112 J
7/02/2008	6.5	0.0513 U	NA	29.1 U

SB-85				
DATE	DEPTH	BENZENE	CPAH	TPH
7/02/2008	5.5	0.0357 U	0.0225	92.5
7/02/2008	7.5	0.114 U	NA	214 J

SB-72				
DATE	DEPTH	BENZENE	CPAH	TPH
6/25/2008	6.5	0.0371 U	NA	23.6 U
6/25/2008	15.5	0.0348 U	NA	24.0 U
6/25/2008	24.5	0.0400 U	NA	25.2 U
6/25/2008	24.5	[0.0421 U]	[NA]	[25.6 U]

SB-73				
DATE	DEPTH	BENZENE	CPAH	TPH
6/26/2008	6.0	0.0445 U	NA	26.5 U
6/26/2008	15.0	0.0369 U	NA	24.1 U

SB-74				
DATE	DEPTH	BENZENE	CPAH	TPH
6/26/2008	6.0	0.0375 U	NA	24.4 U
6/26/2008	15.0	0.0380 U	NA	24.5 U

SB-76				
DATE	DEPTH	BENZENE	CPAH	TPH
6/30/2008	4.5	0.0389 U	NA	29.1
6/30/2008	9.0	0.0436 U	0.198	17,100 J
6/30/2008	10.5	0.0501 U	0.190	2,540 J
6/30/2008	14.0	0.0288 U	NA	23.4 U
6/30/2008	14.0	[0.0355 U]	[NA]	[23.8 U]

SB-77				
DATE	DEPTH	BENZENE	CPAH	TPH
6/30/2008	6.0	0.0392 U	NA	24.2 U
6/30/2008	9.5	0.0439 U	0.214	7,880 J
6/30/2008	14.0	0.0436 U	NA	23.5 U

SB-84				
DATE	DEPTH	BENZENE	CPAH	TPH
07/01/08	6	0.0610 U	0.0119	69.1
07/01/08	8	0.0745 U	NA	37.0 U

SB-83				
DATE	DEPTH	BENZENE	CPAH	TPH
07/01/08	7	0.0333 U	0.00891	34.4
07/01/08	8.5	0.0502 U	0.0108	40.7

SB-82				
DATE	DEPTH	BENZENE	CPAH	TPH
07/01/08	7	0.0349 U	NA	23.7 U
07/01/08	9	0.0455 U	NA	27.5 U

SB-81				
DATE	DEPTH	BENZENE	CPAH	TPH
6/30/2008	5.0	0.0301 U	0.0896	105 J
6/30/2008	9.5	0.0414 U	NA	25.5 U
6/30/2008	15.5	0.0333 U	NA	23.1 U

SB-78				
DATE	DEPTH	BENZENE	CPAH	TPH
6/30/2008	5.5	6.57 J	0.0183	1,310
6/30/2008	8.5	0.0351 U	NA	22.8 U
6/30/2008	10.0	0.0325 U	NA	35.1 J
6/30/2008	12.5	0.0353 U	NA	24.3 U

SB-67				
DATE	DEPTH	BENZENE	CPAH	TPH
6/24/2008	5.5	0.0398 U	NA	24.1 U

SB-70				
DATE	DEPTH	BENZENE	CPAH	TPH
6/24/2008	6.0	0.0371 U	NA	22.1 U
6/24/2008	7.0	0.0369 U	NA	23.2 U
6/25/2008	12.5	0.0366 U	NA	23.4 U
6/25/2008	20.5	0.0340 U	NA	23.4 U

SB-75				
DATE	DEPTH	BENZENE	CPAH	TPH
6/26/2008	6.0	0.0406 U	NA	24.7 U
6/26/2008	15.0	0.0398 U	NA	24.9 U

SB-79				
DATE	DEPTH	BENZENE	CPAH	TPH
6/30/2008	5.0	0.0344 U	NA	22.1 U
6/30/2008	8.5	0.0348 U	0.276	3,960 J
6/30/2008	10.0	0.0468 U	0.0198	194 J
6/30/2008	11.5	0.0550 U	NA	27.5 U

LEGEND:

- LOWER YARD SITE BOUNDARY
- DRAINAGE DITCH
- ELEVATION CONTOUR
- FINAL EXTENTS OF PHASE I SOIL EXCAVATION (APPROXIMATELY 8' BGS)
- FINAL EXTENTS OF PHASE I SOIL EXCAVATION (APPROXIMATELY 8-10' BGS)
- FINAL EXTENTS OF PHASE I SOIL EXCAVATION (APPROXIMATELY 10-12' BGS)
- FINAL EXTENTS OF PHASE I SOIL EXCAVATION (APPROXIMATELY >12' BGS)
- DEBRIS REMOVAL AREA
- SOIL BORING/HAND AUGER LOCATION
- CPAH** CARCINOGENIC POLYNUCLEAR AROMATIC HYDROCARBONS, ADJUSTED FOR TOXICITY
- TPH** TOTAL PETROLEUM HYDROCARBONS
- []** VALUES SHOWN IN BRACKETS INDICATE DUPLICATE RESULTS
- NA** INDICATES ANALYSIS NOT CONDUCTED
- U** THE COMPOUND WAS ANALYZED FOR BUT NOT DETECTED. THE ASSOCIATED VALUE IS THE COMPOUND QUANTITATION LIMIT
- J** INDICATES AN ESTIMATED VALUE
- ALL DATA REPORTED AS MILLIGRAMS PER KILOGRAMS (mg/kg)**
- SAMPLE DEPTHS REPORTED AS FEET BELOW GROUND SURFACE (ft bgs)**
- BOLD DATA INDICATES CONCENTRATIONS GREATER THAN APPLICABLE SITE CULs/RELS**

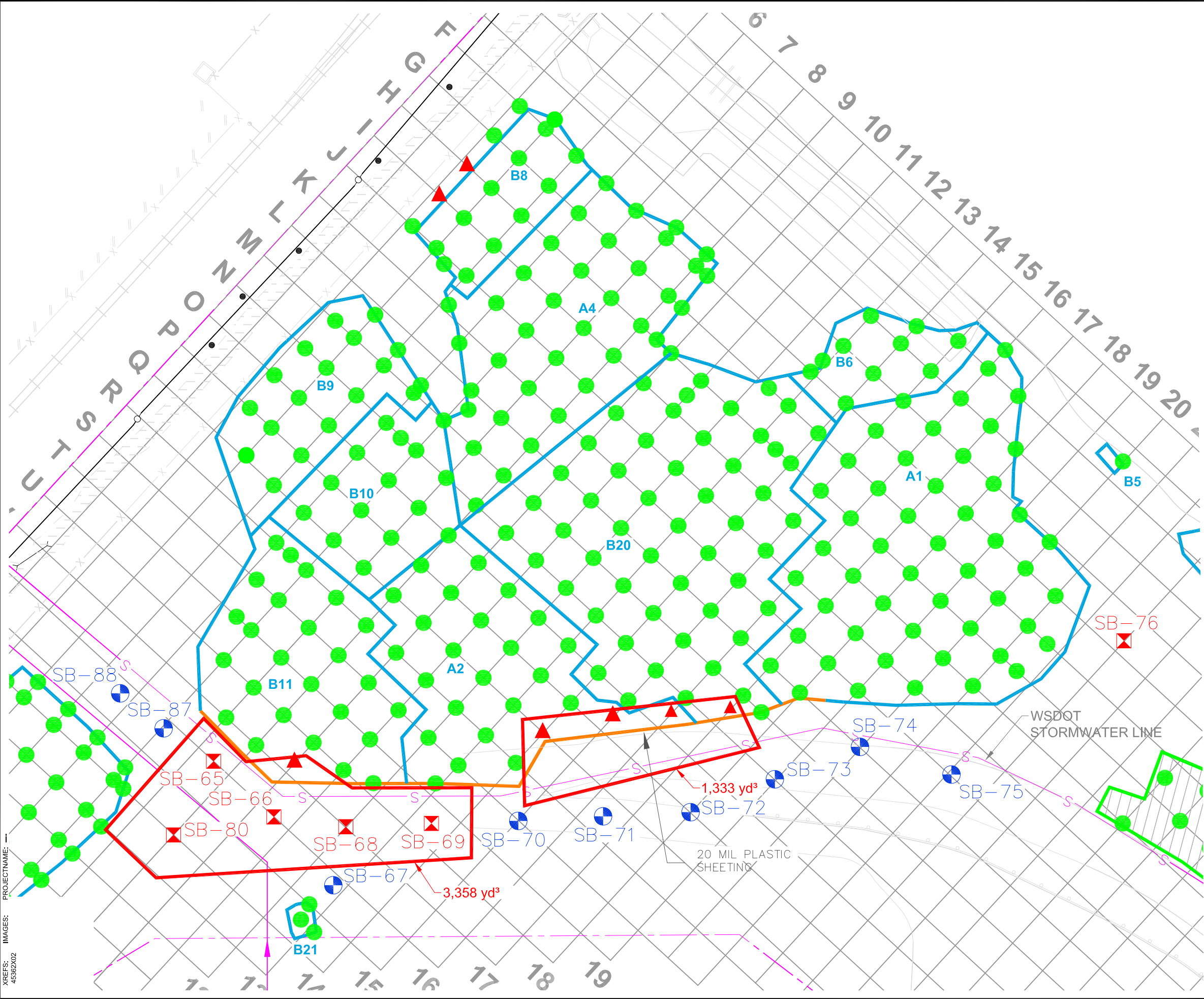
NOTE:
 BASE MAP SUPPLIED BY SLR INTERNATIONAL CORP., APRIL 2007, AT A SCALE OF 1"=150'.

CHEVRON ENVIRONMENTAL MANAGEMENT COMPANY
 FORMER UNOCAL TERMINAL
 EDMONDS, WASHINGTON

**JUNE-JULY 2008
 SOIL BORING
 ANALYTICAL DATA**



CITY: SEATTLE, WA DIV/GROUP: ENV, DB: 2/CLARITY, H, LD: 2, PIC: VOGEL, J, PM: ANDRESEN, R, TM: ANDRESEN, R/RASAR, D, LTR: ON/OFF/REF
 G:\COMMON\Data\Projects\Chevron\Edmonds Terminal\2008 Additional Assessment\Completions\Report\Figures\fig 6\4362B06.DWG LAYOUT: 6, SAVED: 11/19/2009 1:39 PM, ACADVER: 17.1S (LMS TECH), PAGES: 17, PLOTTED: 11/19/2009 1:39 PM, BY: CAMPBELL, PETER



- LEGEND:
- LOWER YARD SITE BOUNDARY
 - DRAINAGE DITCH
 - ⊕ CONFIRMATION SOIL SAMPLES/SOIL BORING WITH ANALYTE CONCENTRATIONS LESS THAN SOIL REMEDIATION LEVELS
 - ▲ ⊠ CONFIRMATION SOIL SAMPLES/SOIL BORING WITH ONE OR MORE ANALYTE CONCENTRATIONS EXCEEDING SOIL REMEDIATION LEVELS
 - ▭ FINAL EXTENTS OF PHASE I SOIL EXCAVATION
 - ▨ TRUCK WHEEL WASH REMOVAL AREA
 - ▨ AREA OF IMPACT
 - yd³ CUBIC YARD

NOTE:
 1. BASE MAP SUPPLIED BY SLR INTERNATIONAL CORP., APRIL 2007, AT A SCALE OF 1"=150\''

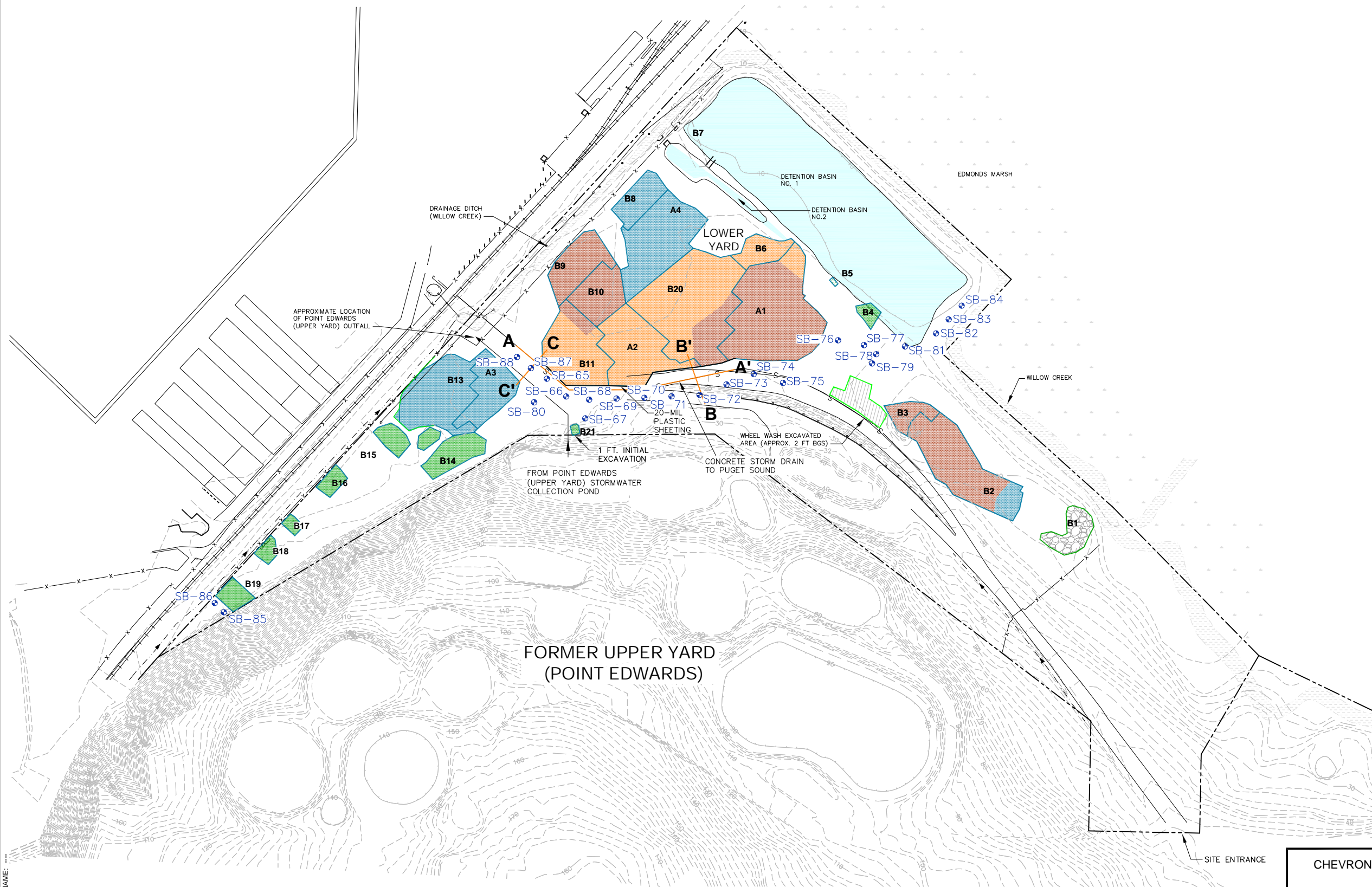


CHEVRON ENVIRONMENTAL MANAGEMENT COMPANY
 FORMER UNOCAL TERMINAL
 EDMONDS, WASHINGTON

**WSDOT STORMWATER LINE AREA
 SAMPLE LOCATIONS AND
 AREAS OF IMPACT**

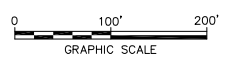
FIGURE
6

CITY: (SEATTLE, WA) SYRACUSE, NY GROUP: ENVCAD DB: (C, DOTSON), P. LISTER PP: J. VOGELY, PM: R. ANDRESEN TR: D. RASAR LVR: ON=OFF-REF (FRZ)
 G:\ENVCAD\SYRACUSE\ACT\B0045382\0002\0000\2\DWG\45382B02.dwg LAYOUT: 7\$AVED: 11/19/2009 1:33 PM ACADVER: 17.05 (LMS TECH) PAGESETUP: ##### PLOTSTYLETABLE: PLTFULL.CTB PLOTTED: 11/19/2009 1:33 PM BY: LISTER, PAUL
 XREFS: 45382X01 45382X02
 IMAGES: PROJECTNAME: ...



- LEGEND:**
- LOWER YARD SITE BOUNDARY
 - - - DRAINAGE DITCH
 - 20- ELEVATION CONTOUR
 - Final Extents of Phase I Soil Excavation (Approximately 8' BGS)
 - Final Extents of Phase I Soil Excavation (Approximately 8-10' BGS)
 - Final Extents of Phase I Soil Excavation (Approximately 10-12' BGS)
 - Final Extents of Phase I Soil Excavation (Approximately >12' BGS)
 - Debris Removal Area
 - Soil Boring/Hand Auger Location

NOTE:
 BASE MAP SUPPLIED BY SLR INTERNATIONAL CORP., APRIL 2007, AT A SCALE OF 1"=150'.



CHEVRON ENVIRONMENTAL MANAGEMENT COMPANY
 FORMER UNOCAL TERMINAL
 EDMONDS, WASHINGTON

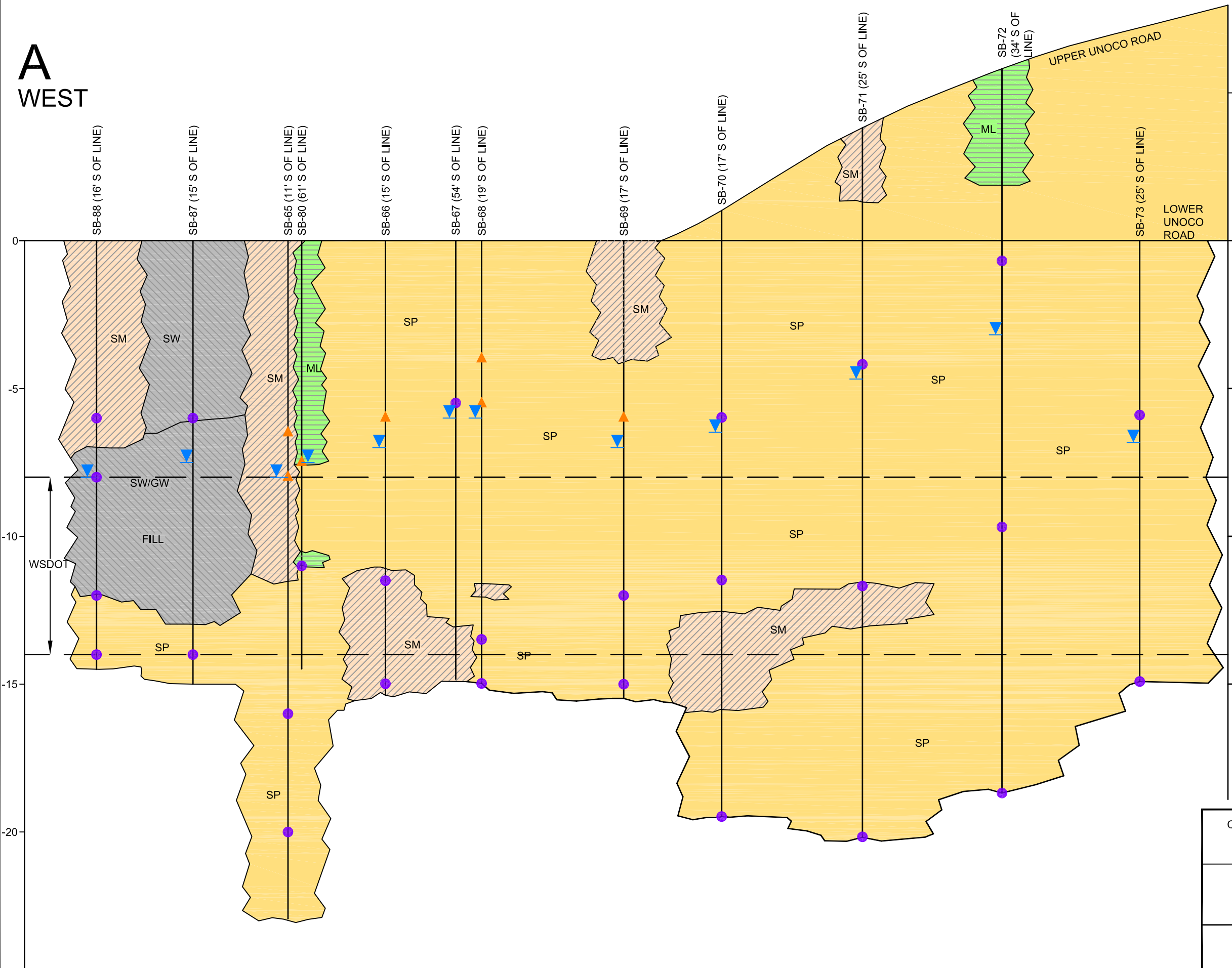
CROSS SECTION LOCATIONS MAP

FIGURE
7

CITY: SYRACUSE GROUP: ENVICAD DB: PGL AMS PP: J. VOGELY PM: S. ZORN TR: D. BASAR LVR: ONI*OFFEREF
 G:\ENVICAD\SYRACUSE\ACT\B0045392\0001\100007\DWG\45392\01.dwg LAYOUT: 8 SAVED: 3/20/2009 2:30 PM ACADVER: 17.05 (LMS TECH) PAGES: 8
 PLOTSTYLETABLE: PLT\FULL.CTB PLOTTED: 3/20/2009 5:37 PM BY: SCHILLING, ADAM

A
WEST

A'
EAST

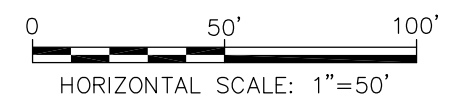


- LEGEND:**
- SP = POORLY GRADED SAND
 - SM = SILTY SAND OR SANDY SILT
 - ML = SILT
 - SW/GW = GRAVELLY SAND OR SAND AND GRAVEL MIXTURE, 2001 EXCAVATION BACKFILL

WSDOT = WASHINGTON STATE DEPARTMENT OF TRANSPORTATION 72 INCH CONCRETE STORMWATER LINE

- SAMPLE LOCATIONS WITH ANALYTICAL RESULTS LESS THAN SITE RELS/CULs
- SAMPLE LOCATIONS WITH ANALYTICAL RESULTS GREATER THAN SITE RELS/CULs
- WATER LEVEL

- NOTE:**
1. THE LOCATION OF THE WSDOT STORMWATER LINE IS APPROXIMATE AND NOT DRAWN TO SCALE
 2. SOIL BORING OCATIONS ARE PROJECTED ONTO WSDOT LINE. ACTUAL DISTANCE ARE NOTED IN PARANTHESIS.

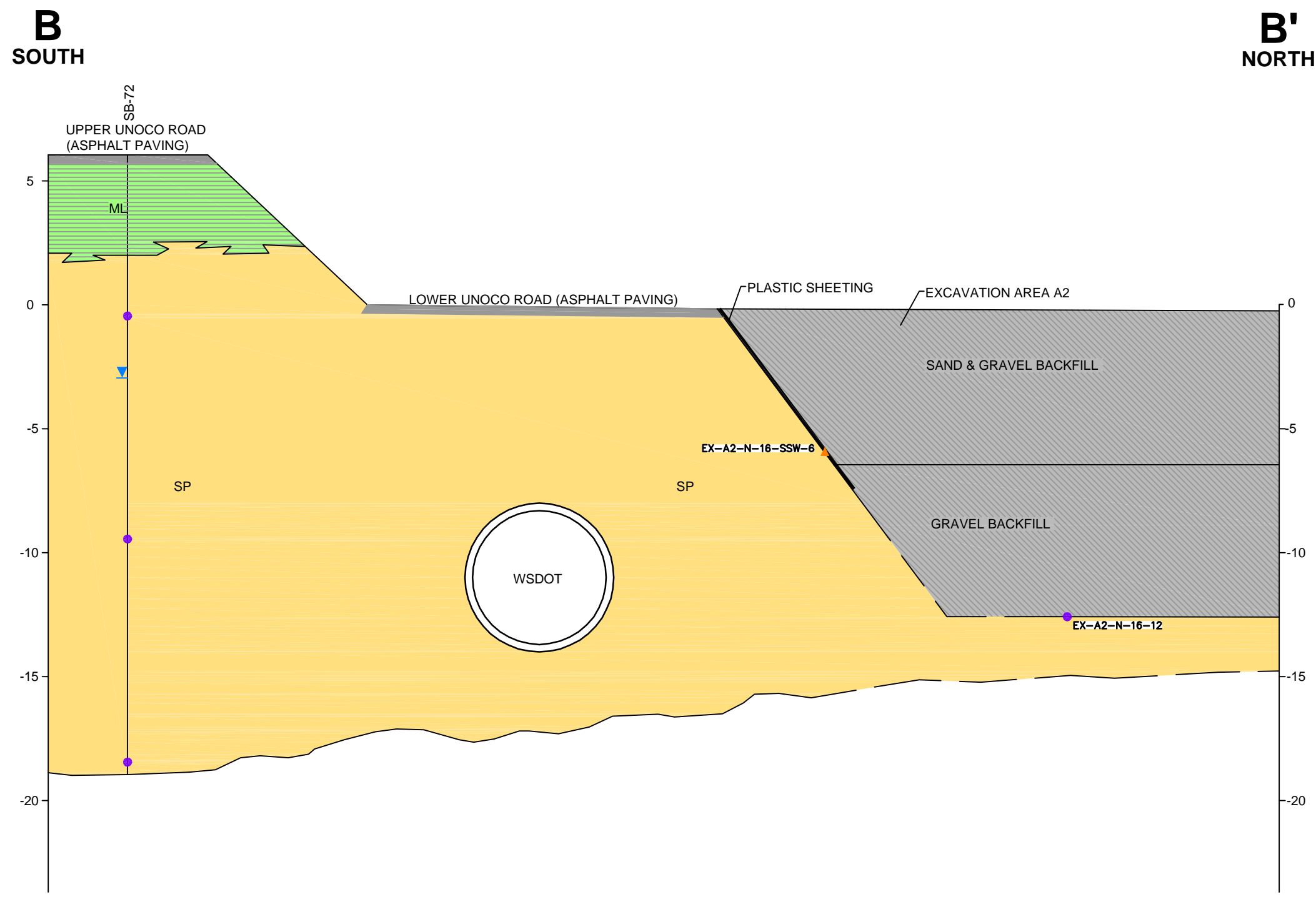


CHEVRON ENVIRONMENTAL MANAGEMENT COMPANY
 FORMER UNOCAL TERMINAL
 EDMONDS, WASHINGTON

CROSS SECTION A-A'

FIGURE
8

CITY: SYRACUSE GROUP: ENVCAD DB: PGL AMS PP: J. VOGELY PM: S. ZORN TM: R. ANDRESEN TR: D. RASAR LVR: ONL-OFF-REF
 G:\ENVCAD\SYRACUSE\ACT\B0453620\02\0002\DWG\45362\02.dwg LAYOUT: 9SAVED: 11/18/2009 11:13 AM ACADVER: 17.05 (LMS TECH) PAGESETUP: ...PLOTSTYLETABLE: PLTFULLCTB PLOTTED: 11/18/2009 11:23 AM BY: SCHILLING, ADAM
 XREFS: IMAGES: PROJECTNAME: ...



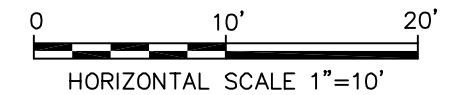
- LEGEND:**
- SP = POORLY GRADED SAND
 - ML = SILT
 - SW/GW = GRAVELLY SAND OR SAND AND GRAVEL MIXTURE, 2001 OR 2007/2008 EXCAVATION BACKFILL

WSDOT = WASHINGTON STATE DEPARTMENT OF TRANSPORTATION 72 INCH CONCRETE STORMWATER LINE

- SAMPLE LOCATIONS WITH ANALYTICAL RESULTS LESS THAN SITE RELS/CULs
- SAMPLE LOCATIONS WITH ANALYTICAL RESULTS GREATER THAN SITE RELS/CULs
- WATER LEVEL
- INFERRED BOUNDARY

NOTE:

THE LOCATION OF THE WSDOT STORMWATER LINE IS APPROXIMATE AND NOT DRAWN TO SCALE

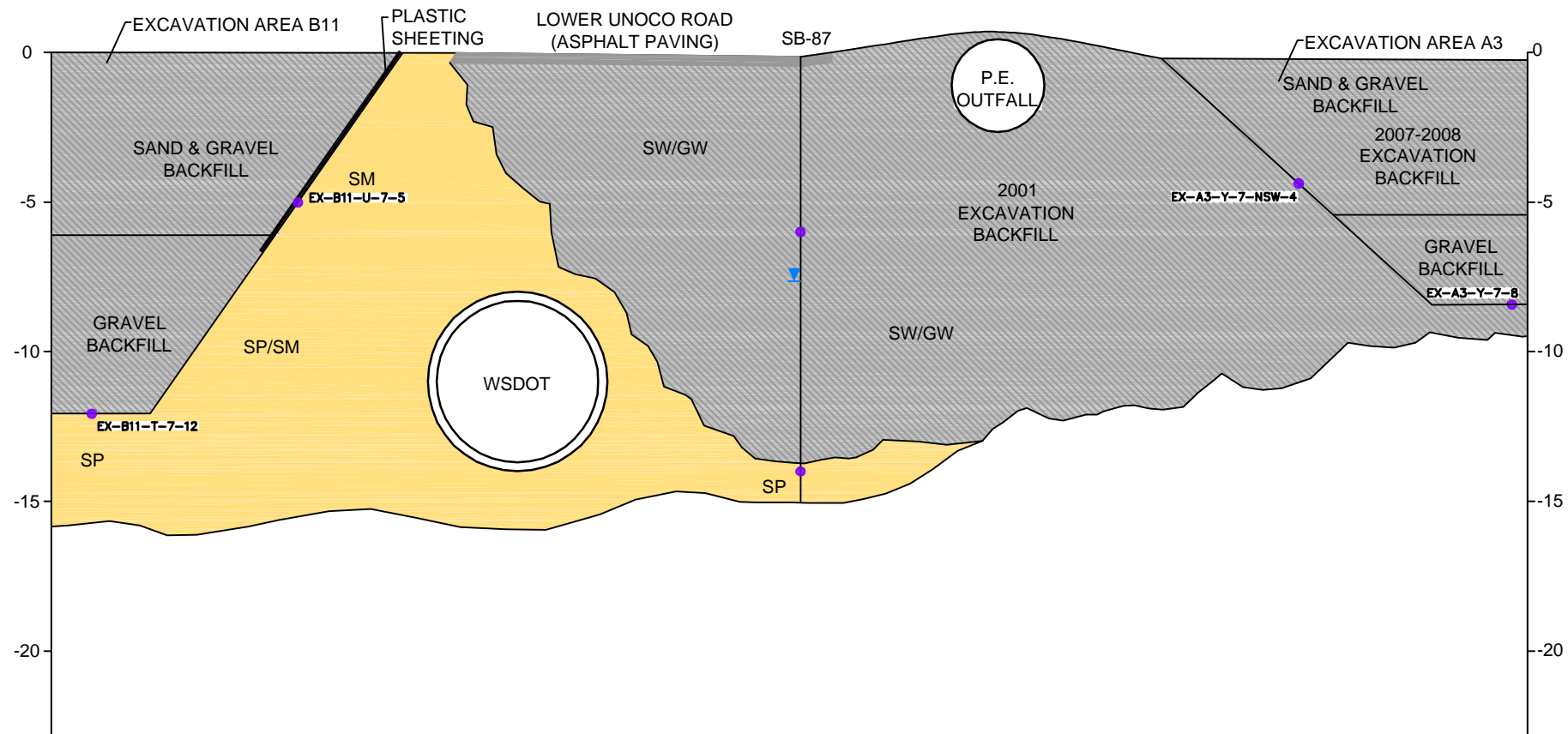


CHEVRON ENVIRONMENTAL MANAGEMENT COMPANY FORMER UNOCAL TERMINAL EDMONDS, WASHINGTON
CROSS SECTION B-B'
9

CITY: SYRACUSE GROUP: ENVCAD DB: PGLAMS PP: J. VOGUELEY PM: S. ZORN TM: R. ANDRESEN TR: D. RASAR LVR: ON= OFF=REF
 G: ENVCAD/SYRACUSE/ACT/1804536/2002/0002/0002/DWG/45362/03.dwg LAYOUT: 10SAVED: 11/18/2009 11:22 AM ACADVER: 17.05 (LMS TECH) PAGES: 17
 XREFS: IMAGES: PROJECTNAME: --- PLOTSTYLETABLE: PLTFULL.CTB PLOTTED: 11/18/2009 11:23 AM BY: SCHILLING, ADAM

C
NORTH

C'
SOUTH

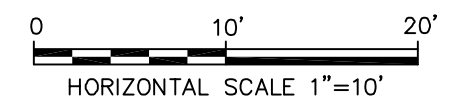


LEGEND:

- SP = POORLY GRADED SAND
- SM = SILTY SAND OR SANDY SILT
- SW/GW = GRAVELLY SAND OR SAND AND GRAVEL MIXTURE, 2001 OR 2007/2008 EXCAVATION BACKFILL
- WSDOT = WASHINGTON STATE DEPARTMENT OF TRANSPORTATION 72 INCH CONCRETE STORMWATER LINE
- SAMPLE LOCATIONS WITH ANALYTICAL RESULTS LESS THAN SITE RELs/CULs
- WATER LEVEL
- INFERRED BOUNDARY

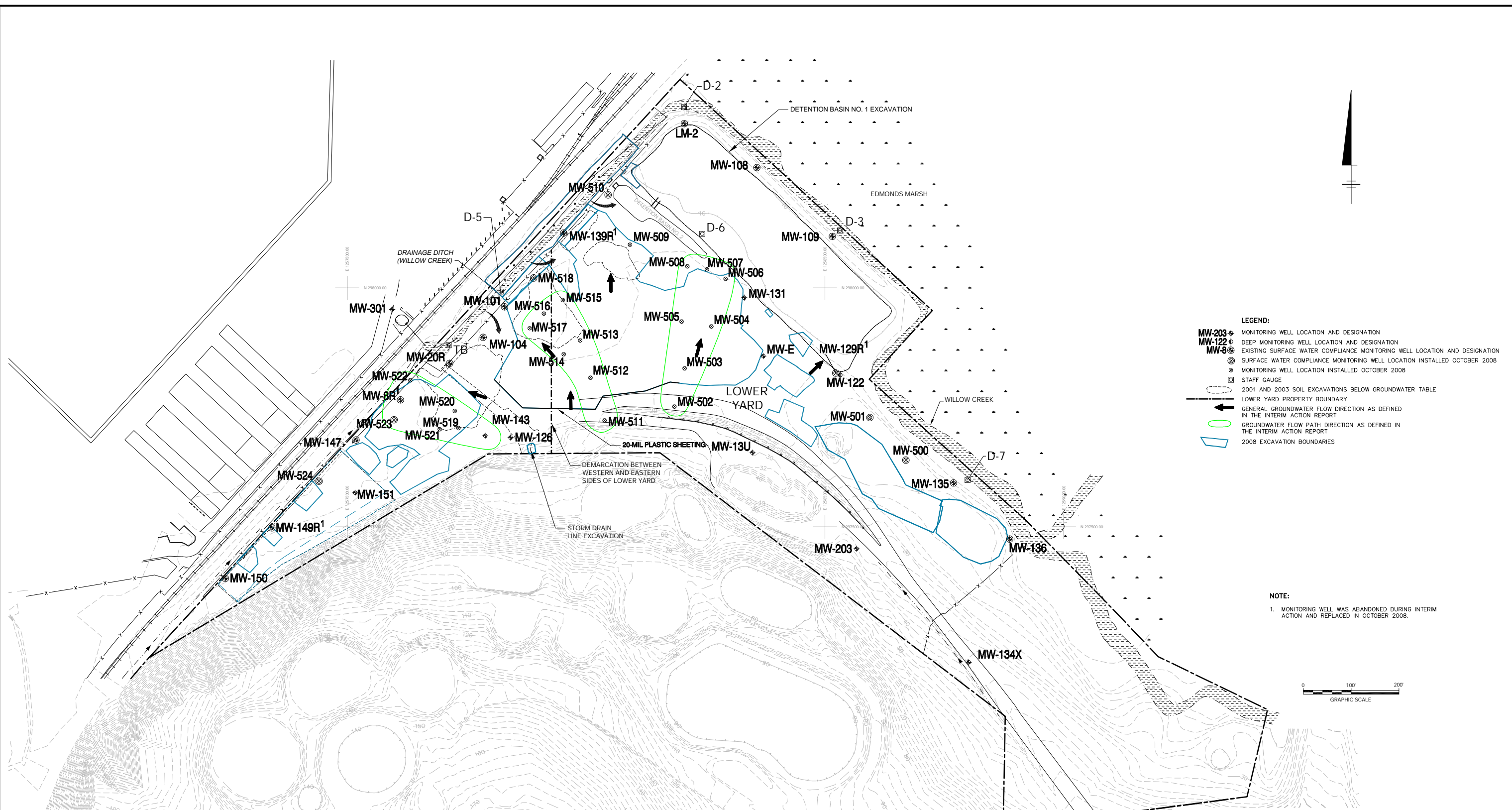
NOTE:

WSDOT STORMWATER LINE AND P.E. OUTFALL LOCATIONS ARE APPROXIMATE AND NOT DRAWN TO SCALE



CHEVRON ENVIRONMENTAL MANAGEMENT COMPANY FORMER UNOCAL TERMINAL EDMONDS, WASHINGTON	
CROSS SECTION C-C'	
ARCADIS	FIGURE 10

CITY: (TAMPA, FL) SYRACUSE NY DIV/GROUP: (EN/CAD) DB: (JAR) KLS PIC: (1) PWR: (ANDRESEN TM/D: (RASAR) LVR: (OPTIONAL=OFF=REF) G:\ENVCAD\SYRACUSE\ACT\B0045382\0002\DWG\45382B07.dwg LAYOUT: 11.SAVED: 11/19/2009 10:34:AM ACADVER: 17.0S [LMS TECH] PAGES: 17.0S [LMS TECH] PLOTSETUP: PLT: FULL CTB PLOTTED: 11/19/2009 10:34:AM BY: LISTER, PAUL



- LEGEND:**
- MW-203 + MONITORING WELL LOCATION AND DESIGNATION
 - MW-122 + DEEP MONITORING WELL LOCATION AND DESIGNATION
 - MW-8 + EXISTING SURFACE WATER COMPLIANCE MONITORING WELL LOCATION AND DESIGNATION
 - ⊙ SURFACE WATER COMPLIANCE MONITORING WELL LOCATION INSTALLED OCTOBER 2008
 - ⊙ MONITORING WELL LOCATION INSTALLED OCTOBER 2008
 - ⊙ STAFF GAUGE
 - 2001 AND 2003 SOIL EXCAVATIONS BELOW GROUNDWATER TABLE
 - - - LOWER YARD PROPERTY BOUNDARY
 - GENERAL GROUNDWATER FLOW DIRECTION AS DEFINED IN THE INTERIM ACTION REPORT
 - GROUNDWATER FLOW PATH DIRECTION AS DEFINED IN THE INTERIM ACTION REPORT
 - ▭ 2008 EXCAVATION BOUNDARIES

NOTE:
 1. MONITORING WELL WAS ABANDONED DURING INTERIM ACTION AND REPLACED IN OCTOBER 2008.



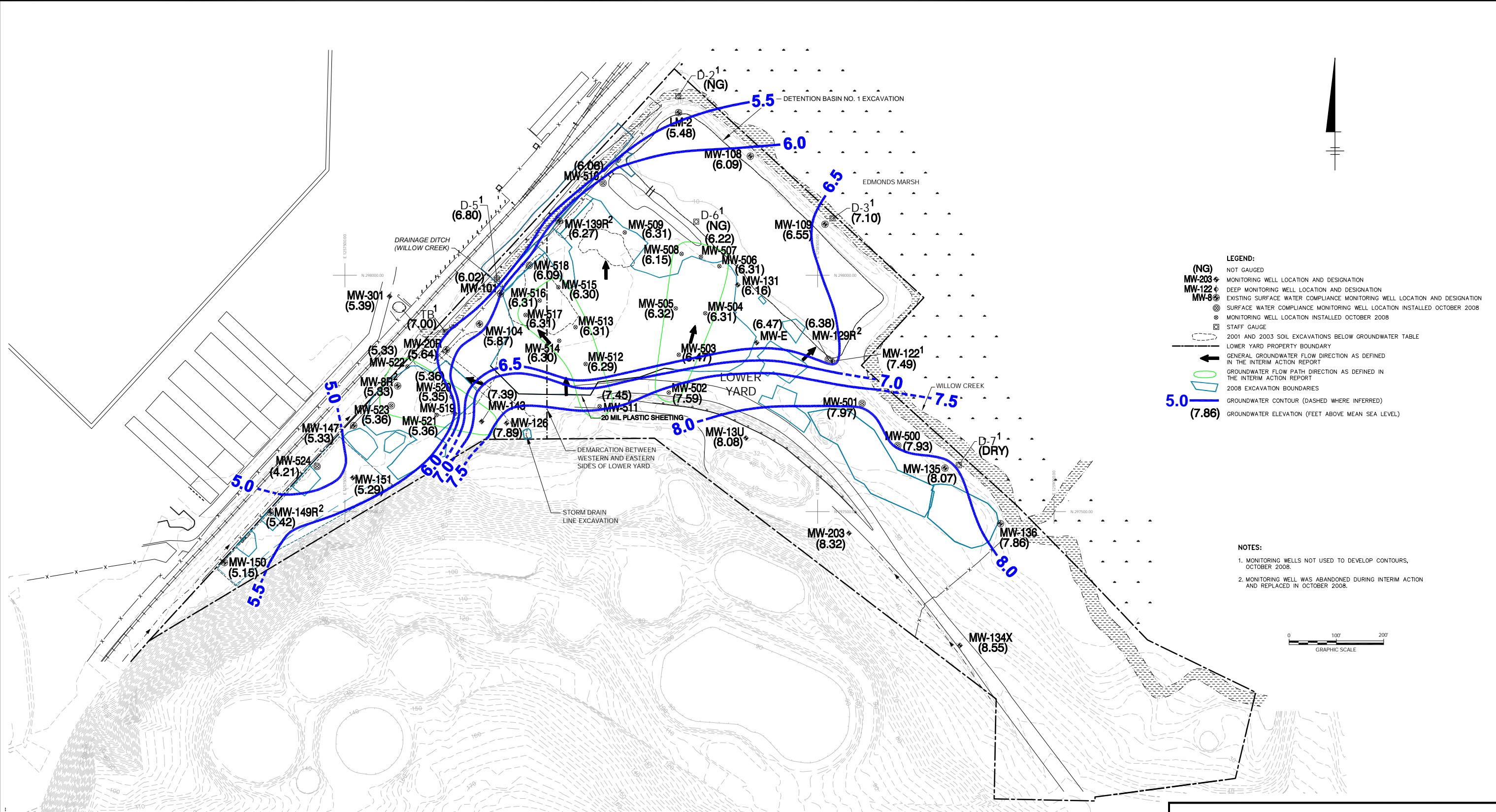
CHEVRON ENVIRONMENTAL MANAGEMENT COMPANY
 FORMER UNOCAL EDMONDS TERMINAL
 EDMONDS, WASHINGTON

**GROUNDWATER FLOW PATH AREAS AND
 MONITORING WELL LOCATIONS**

**FIGURE
 11**

CITY: (TAMPA, FL), SYRACUSE, NY, GROUP: ENV/CAD, DB: (J. RICHARDS), A. SCHILLING, P. LISTER, P. M. R. ANDRESEN, TM: S. ZORN, TR: D. RASAR, LTR: ON=OFF-REF, (FRZ)
 G:\ENV\CAD\SYRACUSE\ACT\B0045382\0002\0002\DWG\45382\01.dwg, LAYOUT: 12, SAVED: 11/19/2009 9:20 AM, ACADVER: 17.05 (LMS TECH)\PAGESETUP: ---, PLOTSTYLETABLE: PLT\FULL.CTB, PLOTTED: 11/19/2009 9:20 AM, BY: LISTER, PAUL

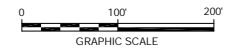
XPREFS: 45382\00
 45382\01
 45382\02



LEGEND:

- (NG) NOT GAUGED
- MW-203+ MONITORING WELL LOCATION AND DESIGNATION
- MW-122+ DEEP MONITORING WELL LOCATION AND DESIGNATION
- MW-8+ EXISTING SURFACE WATER COMPLIANCE MONITORING WELL LOCATION AND DESIGNATION
- ⊗ SURFACE WATER COMPLIANCE MONITORING WELL LOCATION INSTALLED OCTOBER 2008
- ⊙ MONITORING WELL LOCATION INSTALLED OCTOBER 2008
- ⊠ STAFF GAUGE
- - - 2001 AND 2003 SOIL EXCAVATIONS BELOW GROUNDWATER TABLE
- - - LOWER YARD PROPERTY BOUNDARY
- GENERAL GROUNDWATER FLOW DIRECTION AS DEFINED IN THE INTERIM ACTION REPORT
- GROUNDWATER FLOW PATH DIRECTION AS DEFINED IN THE INTERIM ACTION REPORT
- - - 2008 EXCAVATION BOUNDARIES
- 5.0 - - - GROUNDWATER CONTOUR (DASHED WHERE INFERRED)
- (7.86) GROUNDWATER ELEVATION (FEET ABOVE MEAN SEA LEVEL)

- NOTES:**
1. MONITORING WELLS NOT USED TO DEVELOP CONTOURS, OCTOBER 2008.
 2. MONITORING WELL WAS ABANDONED DURING INTERIM ACTION AND REPLACED IN OCTOBER 2008.



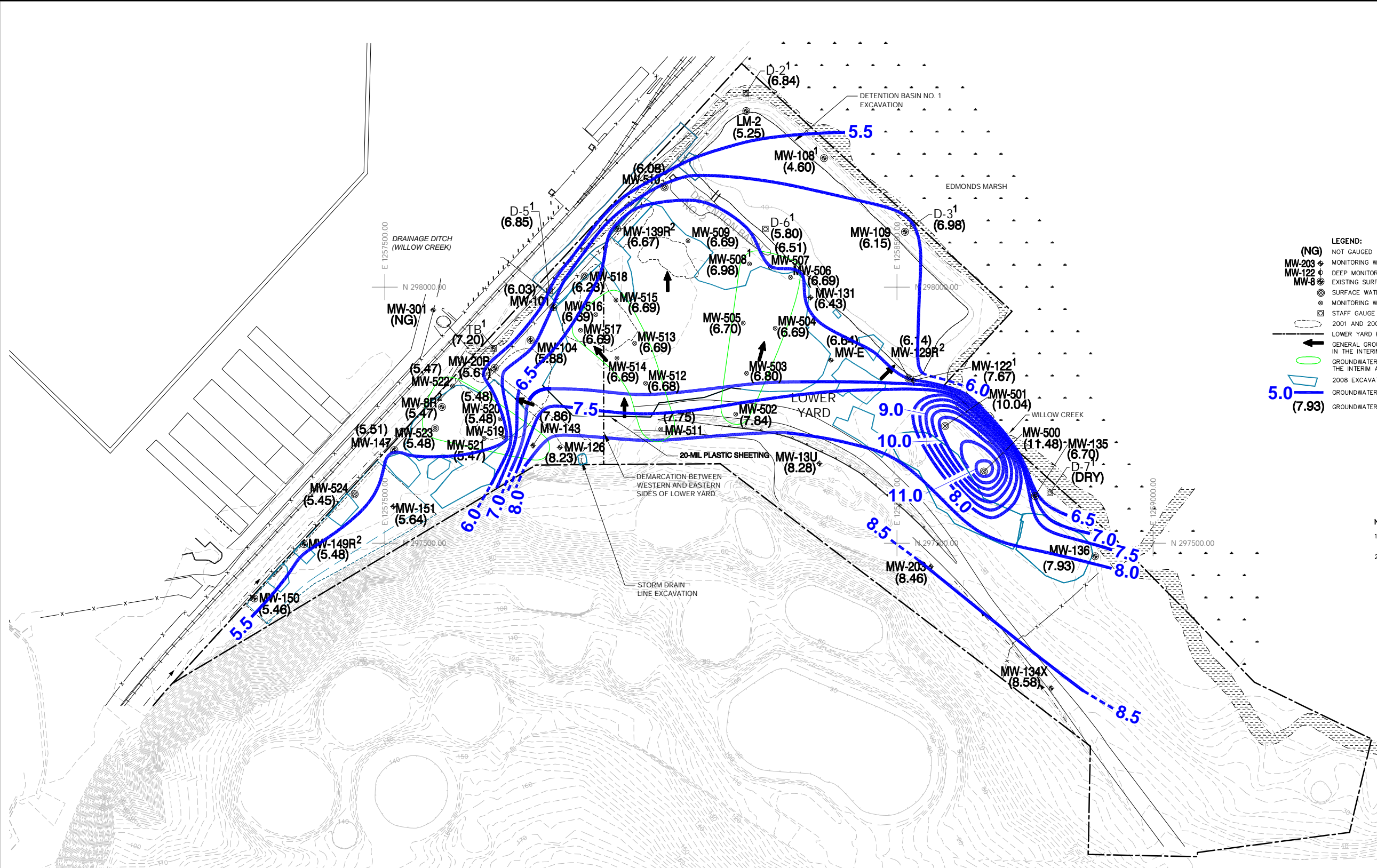
CHEVRON ENVIRONMENTAL MANAGEMENT COMPANY
 FORMER UNOCAL EDMONDS TERMINAL
 EDMONDS, WASHINGTON

**OCTOBER 20, 2008
 GROUNDWATER
 ELEVATIONS AND CONTOURS**

ARCADIS

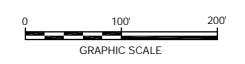
FIGURE
12

CITY: TAMPA, FL | SYRACUSE, NY | GROUP: ENVCAD | DB: (J. RICHARDS) A. SCHILLING, P. LISTER | PM: R. ANDRESEN | TM: S. ZORN | TR: D. RASAR | LVR: ON | OFF: REF. (FRZ) |
 G:\ENVCAD\SYRACUSE\ACT\B0045382\0002\DWG\45382\02.dwg | LAYOUT: 13SAVED | 11/19/2009 9:24 AM | ACADVER: 17.05 (LMS TECH) | PAGES: 12 | PLOT: PL | FULL CTB PLOTTED: 11/19/2009 9:24 AM | BY: LISTER, PAUL



- LEGEND:**
- (NG) NOT GAUGED
 - MW-203 + MONITORING WELL LOCATION AND DESIGNATION
 - MW-122 + DEEP MONITORING WELL LOCATION AND DESIGNATION
 - MW-8 ⊕ EXISTING SURFACE WATER COMPLIANCE MONITORING WELL LOCATION AND DESIGNATION
 - ⊙ SURFACE WATER COMPLIANCE MONITORING WELL LOCATION INSTALLED OCTOBER 2008
 - ⊕ MONITORING WELL LOCATION INSTALLED OCTOBER 2008
 - ⊗ STAFF GAUGE
 - 2001 AND 2003 SOIL EXCAVATIONS BELOW GROUNDWATER TABLE
 - - - LOWER YARD PROPERTY BOUNDARY
 - GENERAL GROUNDWATER FLOW DIRECTION AS DEFINED IN THE INTERIM ACTION REPORT
 - GROUNDWATER FLOW PATH DIRECTION AS DEFINED IN THE INTERIM ACTION REPORT
 - 2008 EXCAVATION BOUNDARIES
 - GROUNDWATER CONTOURS (DASHED WHERE INFERRED)
 - (7.93) GROUNDWATER ELEVATIONS (FEET ABOVE MEAN SEA LEVEL)

- NOTES:**
1. MONITORING WELLS NOT USED TO DEVELOP CONTOURS, DECEMBER 2008.
 2. MONITORING WELL WAS ABANDONED DURING INTERIM ACTION AND REPLACED IN OCTOBER 2008.

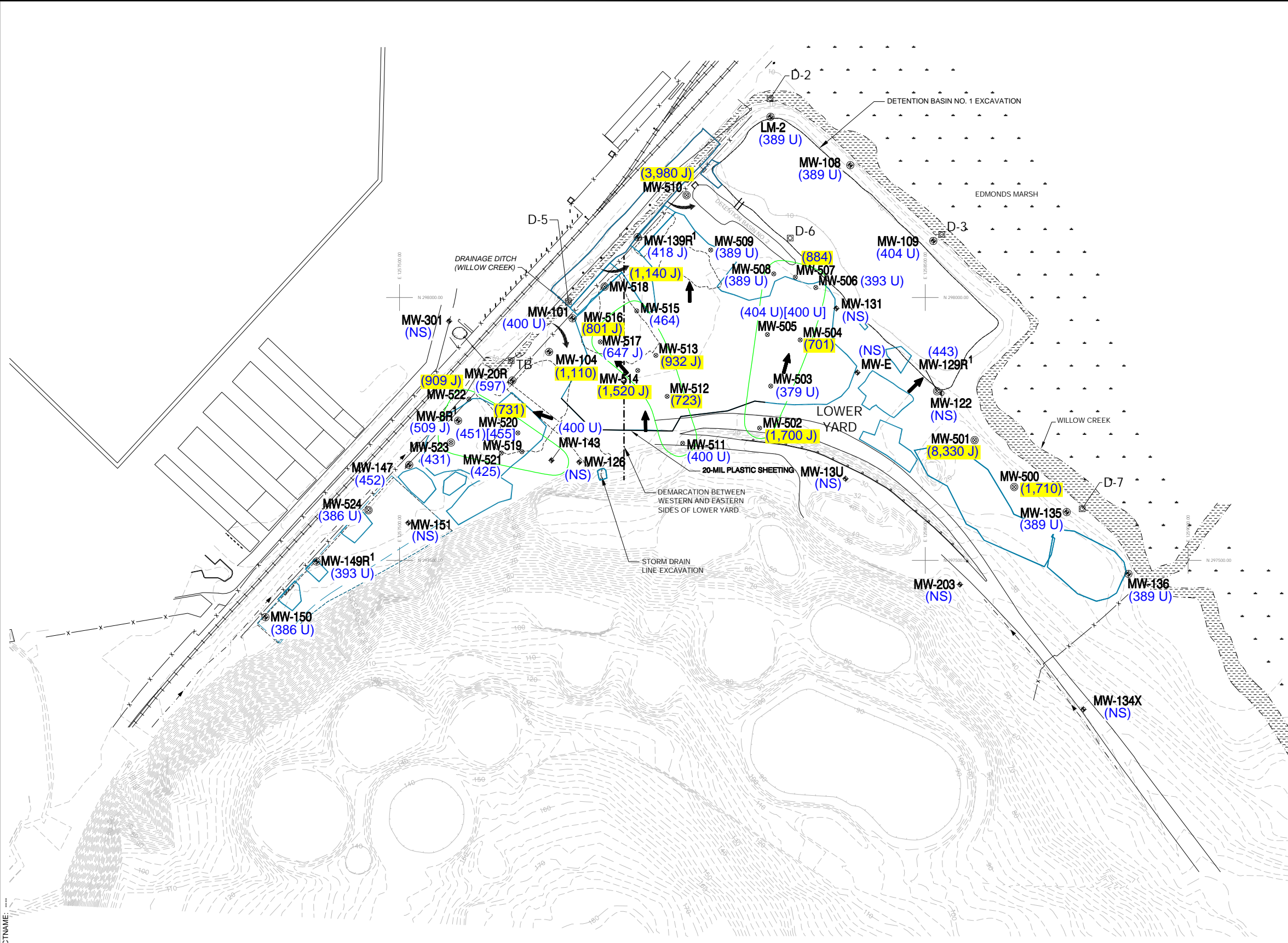


CHEVRON ENVIRONMENTAL MANAGEMENT COMPANY
 FORMER UNOCAL EDMONDS TERMINAL
 EDMONDS, WASHINGTON

**DECEMBER 8, 2008
 GROUNDWATER
 ELEVATIONS AND CONTOURS**

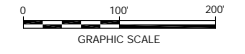
**FIGURE
 13**

CITY: SYRACUSE, NY GROUP: ENVCAD DB: P. LISTER AMS PMR ANDRESEN TM: DRASAR LVR: ON=OFF-REF: (FRZ)
 G:\ENVCAD\SYRACUSE\ACT\B0045362\0002\DWG\G45362C05.dwg LAYOUT: 14SAVED: 3/20/2009 4:37 PM ACADVER: 17.05 (LMS TECH) PAGESETUP: PLTFULL.CTB PLOTTED: 11/19/2009 10:38 AM BY: LISTER, PAUL
 XREFS: 45362X00
 IMAGES: PROJECTNAME: 45362X01
 45362X02



- LEGEND:**
- MW-203+ MONITORING WELL LOCATION AND DESIGNATION
 - MW-122+ DEEP MONITORING WELL LOCATION AND DESIGNATION
 - MW-8+ EXISTING SURFACE WATER COMPLIANCE MONITORING WELL LOCATION AND DESIGNATION
 - ⊗ SURFACE WATER COMPLIANCE MONITORING WELL LOCATION INSTALLED OCTOBER 2008
 - ⊙ MONITORING WELL LOCATION INSTALLED OCTOBER 2008
 - ⊠ STAFF GAUGE
 - 2001 AND 2003 SOIL EXCAVATIONS BELOW GROUNDWATER TABLE
 - LOWER YARD PROPERTY BOUNDARY
 - GENERAL GROUNDWATER FLOW DIRECTION AS DEFINED IN THE INTERIM ACTION REPORT
 - GROUNDWATER FLOW PATH DIRECTION AS DEFINED IN THE INTERIM ACTION REPORT
 - 2008 EXCAVATION BOUNDARIES

- NOTES:**
1. MONITORING WELL WAS ABANDONED DURING INTERIM ACTION AND REPLACED IN OCTOBER 2008.
 2. TPH = TOTAL PETROLEUM HYDROCARBONS. TOTAL TPH CALCULATED BY SUMMING THE CONCENTRATIONS OF GASOLINE, DIESEL AND HEAVY OIL. FOR RESULTS WHICH DID NOT EXCEED METHOD REPORTING LIMITS, HALF OF THE REPORTING LIMIT WAS ADDED TO DETERMINE TOTAL TPH.
 3. ALL CONCENTRATIONS IN MICROGRAMS PER LITER (µg/L).
 4. HIGHLIGHTED CONCENTRATIONS EXCEED THE SITE SPECIFIC TPH CUL FOR EAST SIDE OF THE SITE = 506 µg/L, WEST SIDE OF SITE = 706 µg/L.
 5. NS = NOT SAMPLED.
 6. U = THE COMPOUND WAS ANALYZED FOR BUT NOT DETECTED. THE ASSOCIATED VALUE IS THE COMPOUND QUANTITATION LIMIT.
 7. J = INDICATES AN ESTIMATED VALUE.
 8. [] INDICATES DUPLICATE SAMPLE.

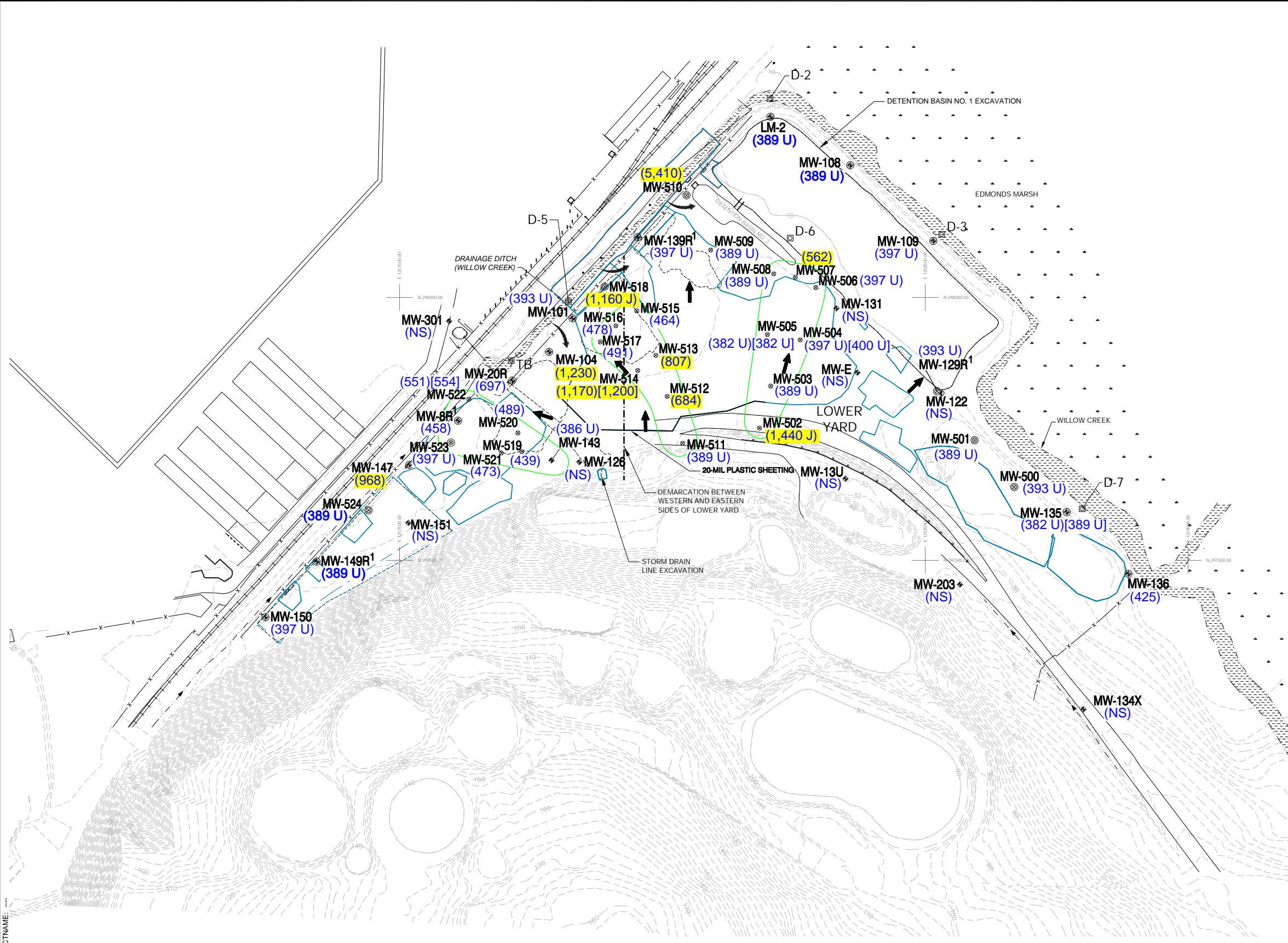


CHEVRON ENVIRONMENTAL MANAGEMENT COMPANY
 FORMER UNOCAL EDMONDS TERMINAL
 EDMONDS, WASHINGTON

**OCTOBER 2008
 TOTAL TPH CONCENTRATIONS**

**FIGURE
 14**

CITY: TAMPA, FL SYRACUSE, NY GROUP: ENVICAD DB: J. RICHARDS, A. SAMOS, P. LISTER PM: R. ANDRESEN TM: D. RASAR LYRON: OFF=REF (FRZ)
 G:\ENVICAD\SYRACUSE\ACT\B0045382\0002\00002\DWG\45382C03.dwg LAYOUT: 15.SAVED: 11/19/2009 10:39 AM ACADVER: 17.0S (LMS TECH) PAGES: 17
 XREFS: 45382X00 45382X01 45382X02
 IMAGES: PROJECTNAME: PLT: FULL.CTB PLOTTED: 11/19/2009 10:39 AM BY: LISTER, PAUL



- LEGEND:**
- MW-203+ Monitoring Well Location and Designation
 - MW-122+ Deep Monitoring Well Location and Designation
 - MW-8+ Existing Surface Water Compliance Monitoring Well Location and Designation
 - ⊗ Surface Water Compliance Monitoring Well Location Installed October 2008
 - ⊙ Monitoring Well Location Installed October 2008
 - ⊠ Staff Gauge
 - 2001 and 2003 Soil Excavations Below Groundwater Table
 - - - Lower Yard Property Boundary
 - General Groundwater Flow Direction as Defined in the Interim Action Report
 - Groundwater Flow Path Direction as Defined in the Interim Action Report
 - ▭ 2008 Excavation Boundaries

- NOTES:**
1. Monitoring well was abandoned during interim action and replaced in October 2008.
 2. TPH = Total Petroleum Hydrocarbons. Total TPH calculated by summing the concentrations of gasoline, diesel and heavy oil. For results which did not exceed method reporting limits, half of the reporting limit was added to determine total TPH.
 3. All concentrations in micrograms per liter (µg/L).
 4. Highlighted concentrations exceed the site specific TPH CUL for east side of the site = 506 µg/L, west side of site = 706 µg/L.
 5. NS = Not Sampled.
 6. U = The compound was analyzed for but not detected. The associated value is the compound quantitation limit.
 7. J = Indicates an estimated value.
 8. [] indicates duplicate sample.

CHEVRON ENVIRONMENTAL MANAGEMENT COMPANY
 FORMER UNOCAL EDMONDS TERMINAL
 EDMONDS, WASHINGTON

**DECEMBER 2008
 TOTAL TPH CONCENTRATIONS**

ARCADIS

FIGURE 15