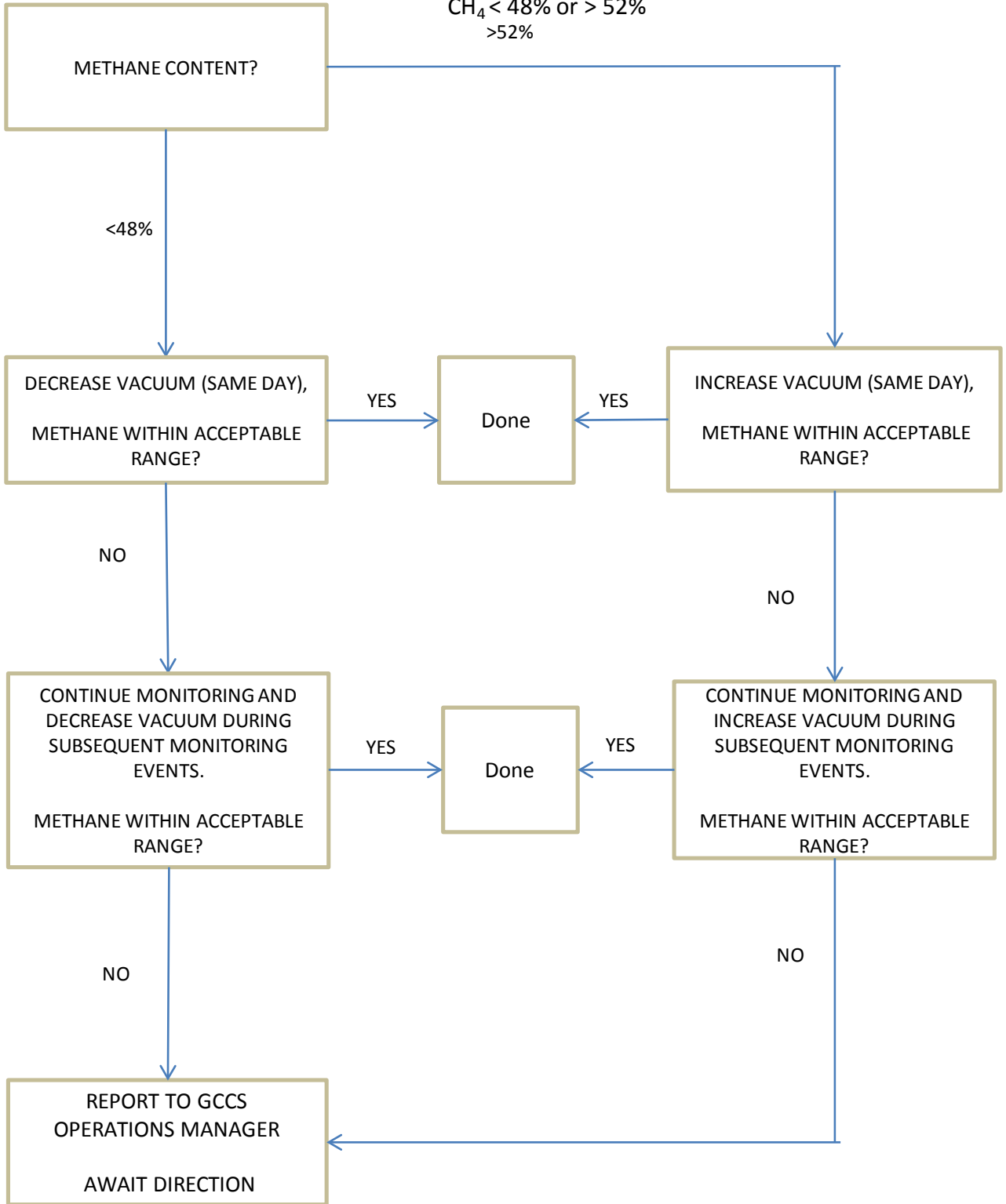
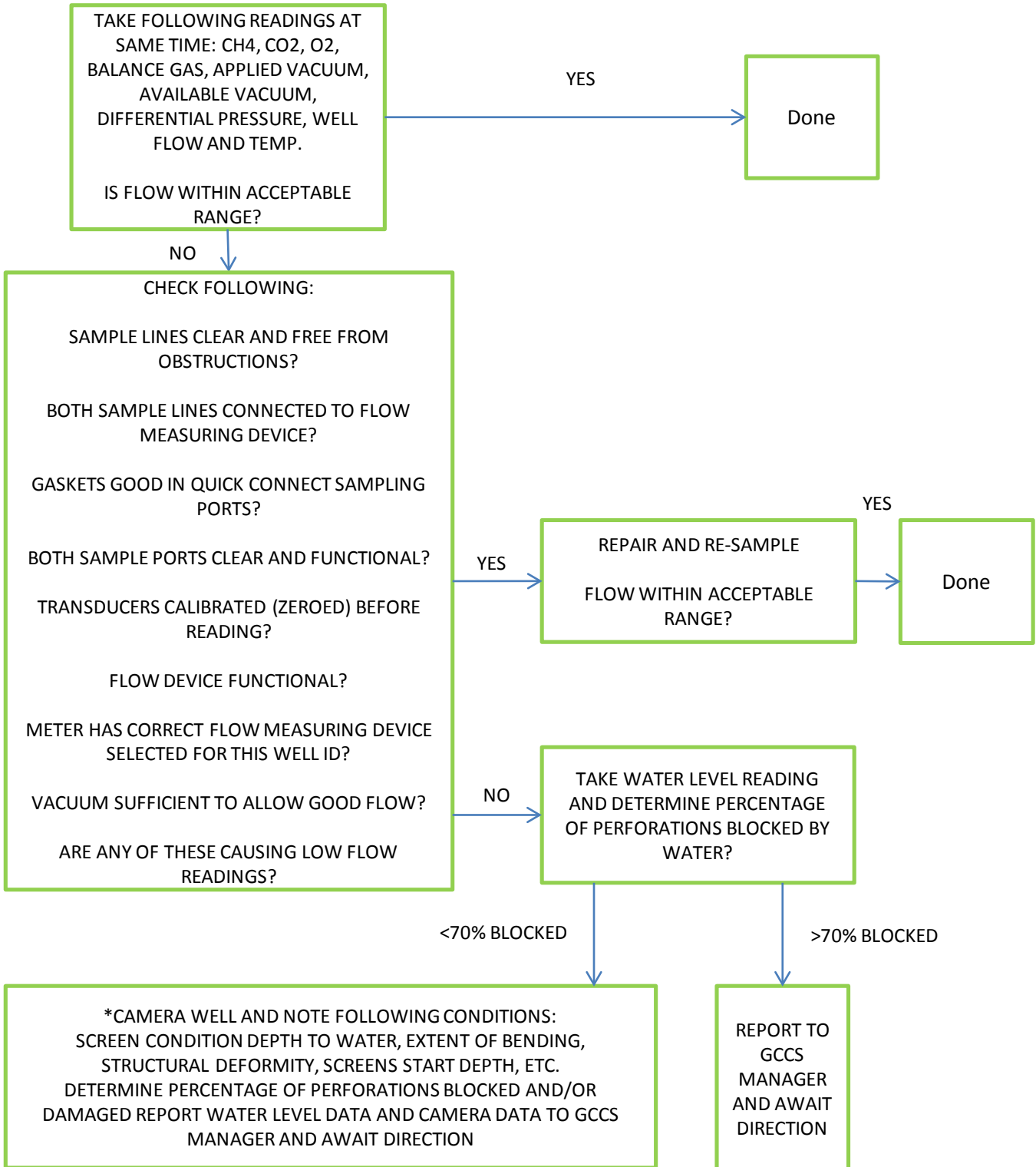


CH₄ < 48% or > 52%
>52%

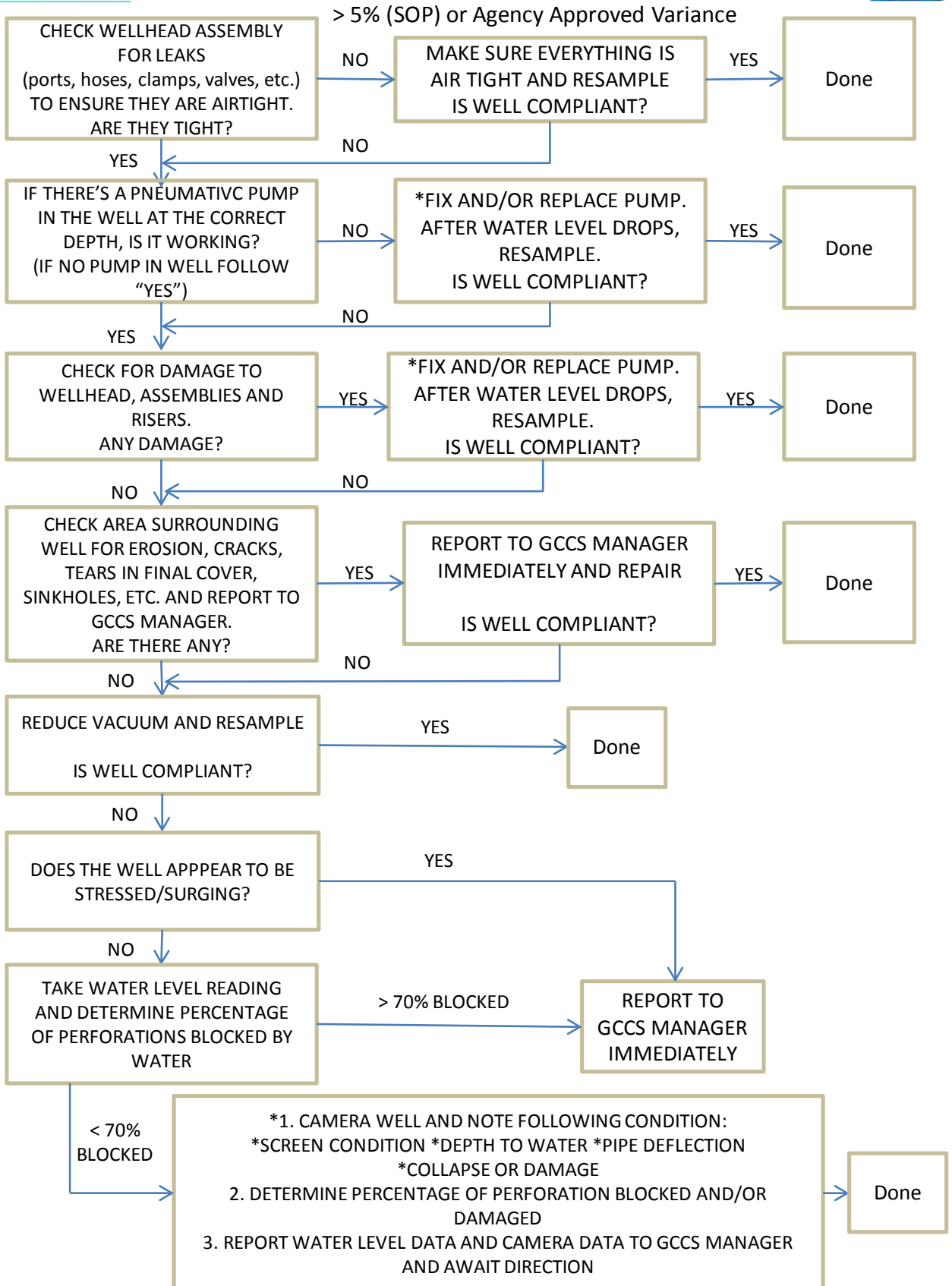




Low Flow Monitoring / Trouble Shooting Procedures for Wellheads < 5 SCFM OF FLOW



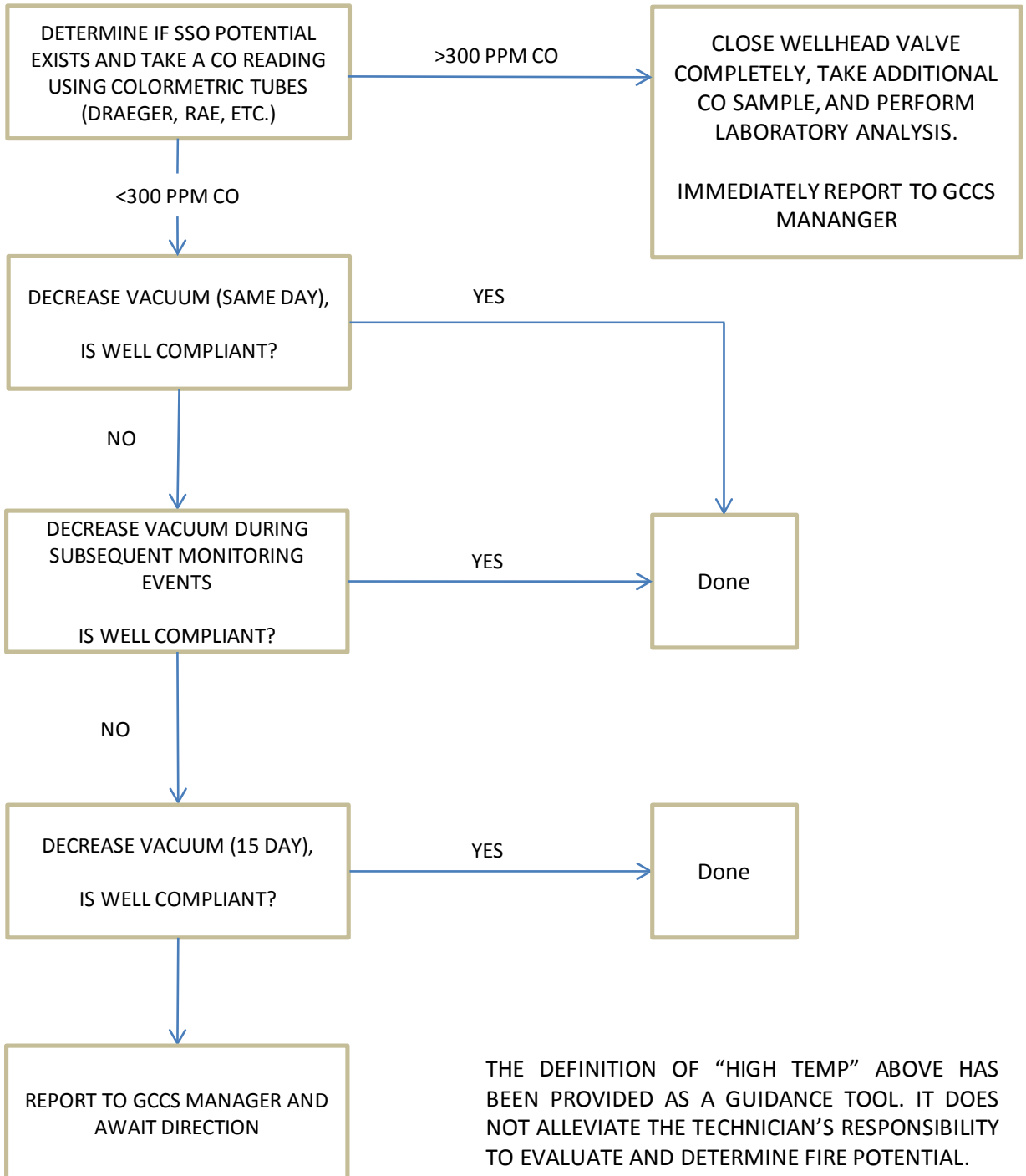
*NON-ROUTINE SCOPE OF WORK MUST HAVE APPROVAL FROM GCCS MANAGER TO PROCEED



*NON-ROUTINE SCOPE OF WORK MUST HAVE APPROVAL FROM GCCS MANAGER TO PROCEED

High Temperature Monitoring / Trouble Shooting Procedures for Wellheads

> 120°F (SOP Value), A Temp. > established variance, and/or a significant (>20%) increase in temperature from a well historically having a stable temperature



THE DEFINITION OF "HIGH TEMP" ABOVE HAS BEEN PROVIDED AS A GUIDANCE TOOL. IT DOES NOT ALLEVIATE THE TECHNICIAN'S RESPONSIBILITY TO EVALUATE AND DETERMINE FIRE POTENTIAL.

SSO = SUBSURFACE OXIDATION

*NON-ROUTINE SCOPE OF WORK MUST HAVE APPROVAL FROM GCCS MANAGER TO PROCEED