

Tacoma Smelter Plume 2017 Yard Program

April 20th, 2017

Point Defiance Elementary School



Topics

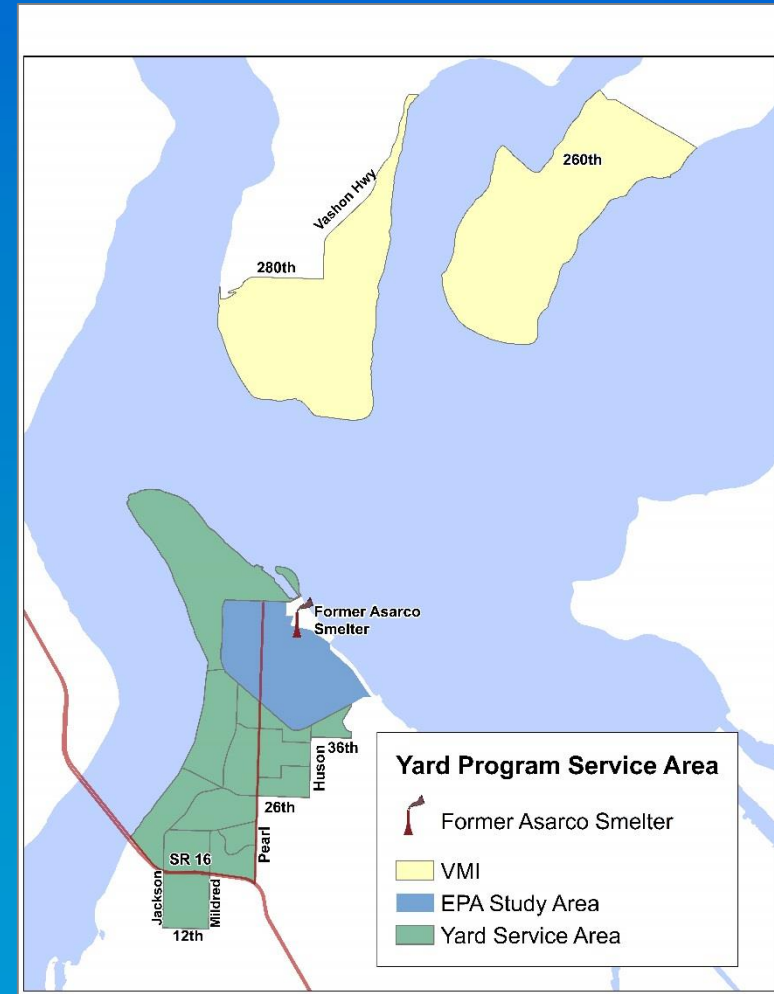
- Timeline
- Prepare yard area
- Maintain access
- Safety
- Homeowner Responsibilities
- Project Line



Yard Program

- Existing residential
- State-led
- Voluntary

- Arsenic action level
= 100 ppm
- Lead action level
= 500 ppm

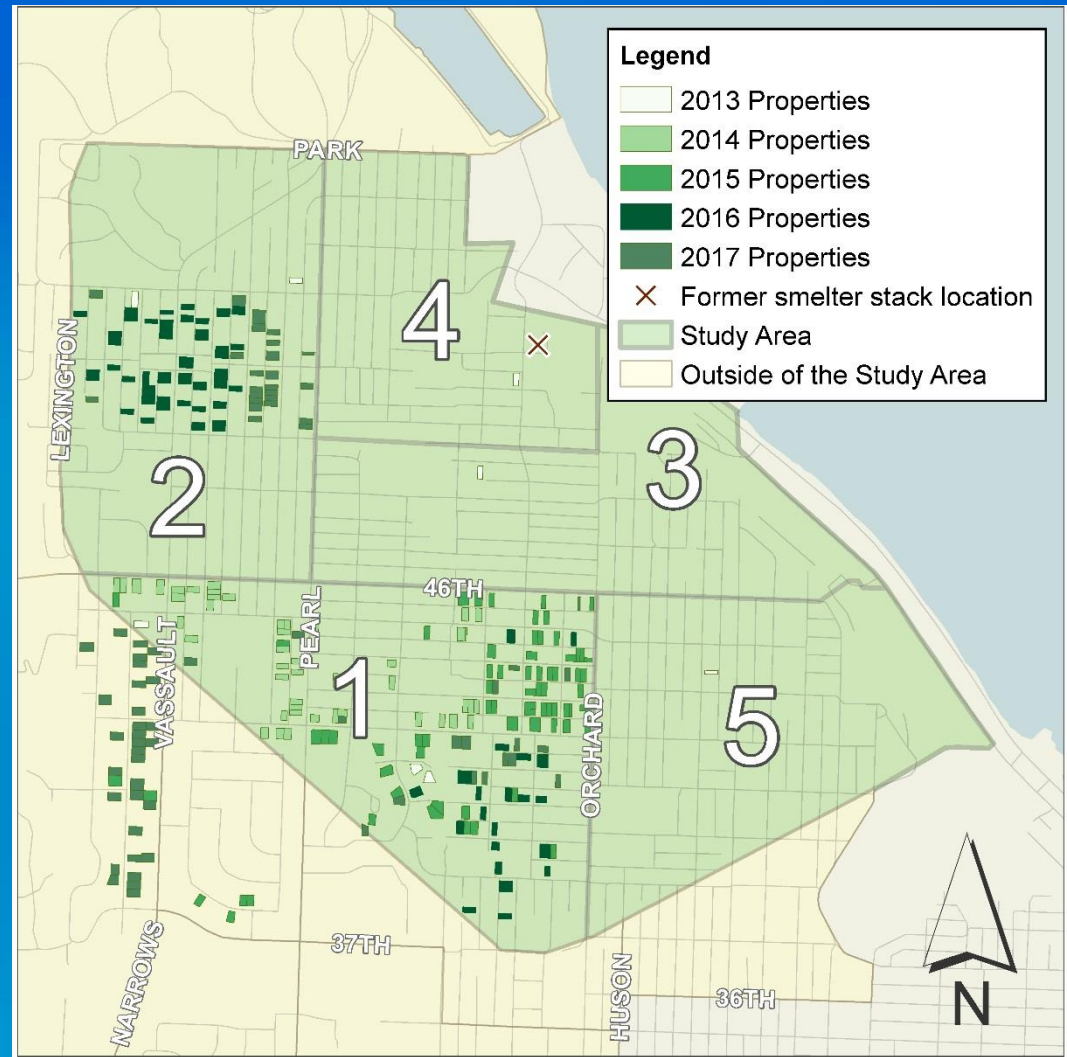


Soil Replacement– Tacoma

Completed:
2013-2016

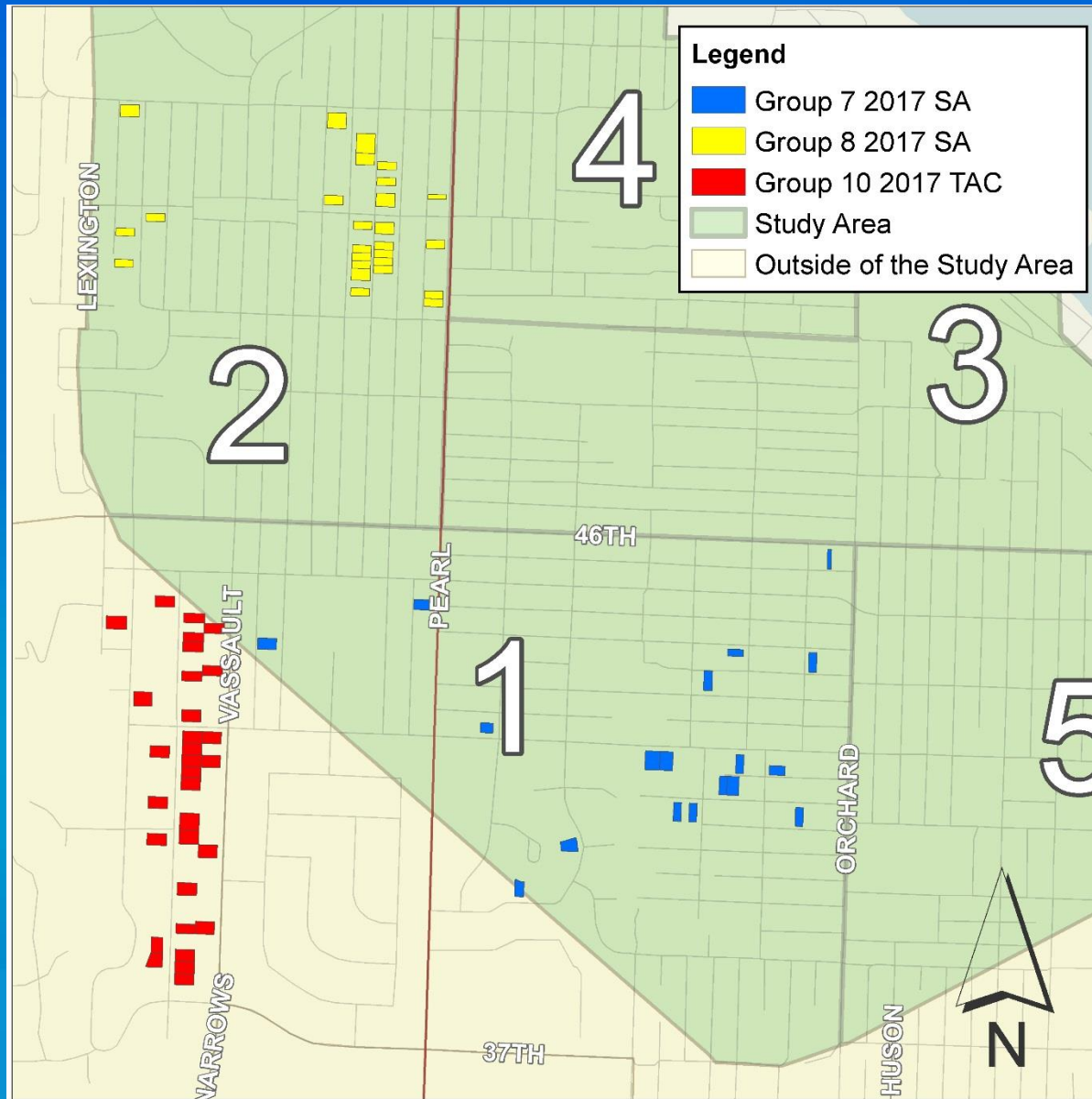
Total-207 yards

Upcoming:
2017 - ~84 yards

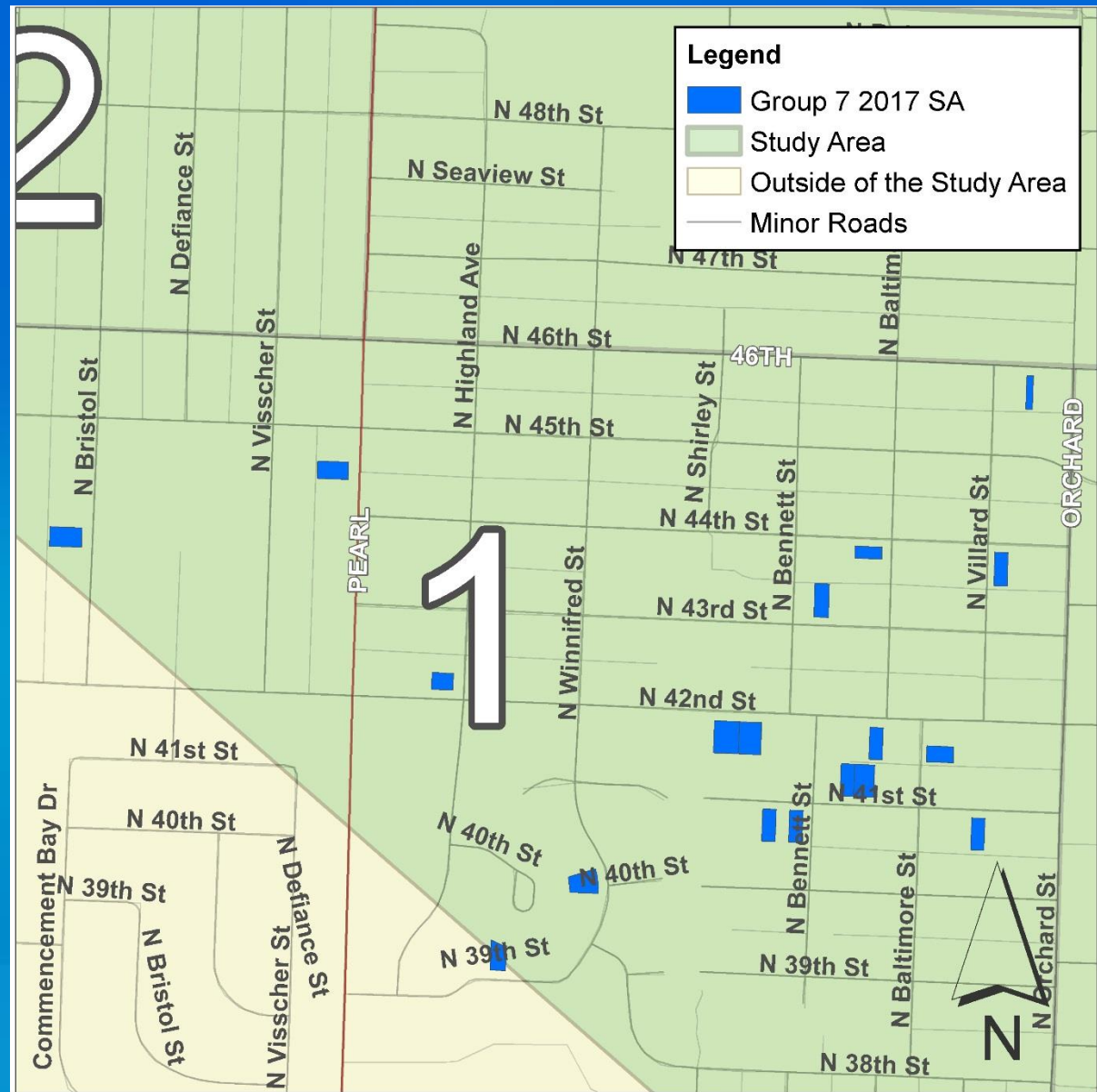


Map as of 3/30/2017

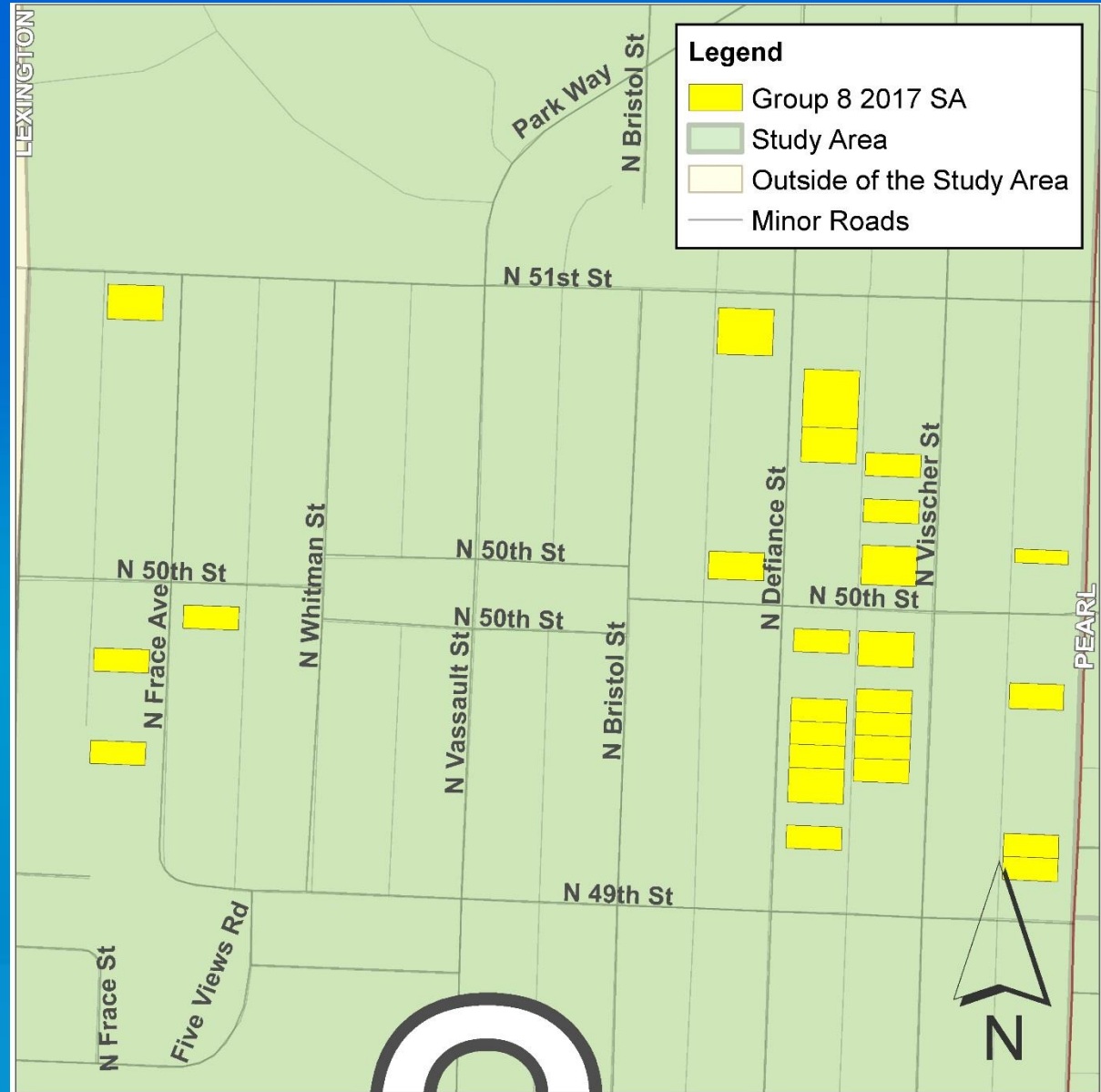
2017



Group 7



Group 8



General Timeline

1. Out to Bid

2. Contract Award

3. Property Sequence/Letter with Contract Start Date (surveys & utility locates)

4. Individual pre-construction meeting (1 week prior to construction start)

5. Soil Removal and Restoration

Prepare Yard

Clear personal items:

- Children's play equipment
- Lawn furniture
- Potted plants
- Gardening tools
- Other misc. items



Maintain Access

- Driveways
- Side yards
- Gates
- Alley



Safety

- Make accommodations for pets.
- Stay out of fenced area and off equipment.
- Call us immediately if you have any safety concerns.



What to expect during construction

Work Hours:

- 8:00 am-5:00 pm
- Monday through Friday
- *Saturdays with permission from Ecology

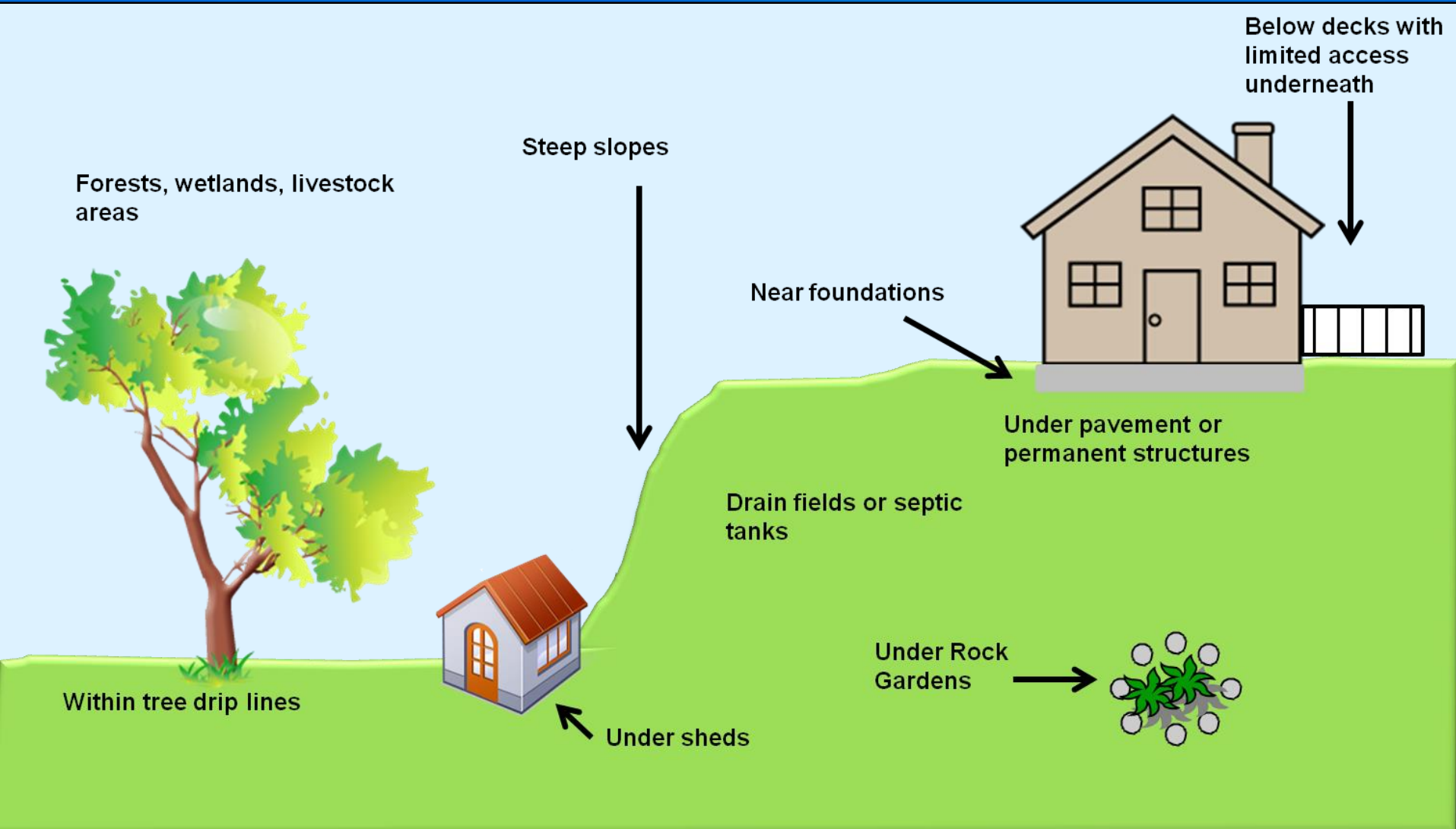


Traffic and Noise

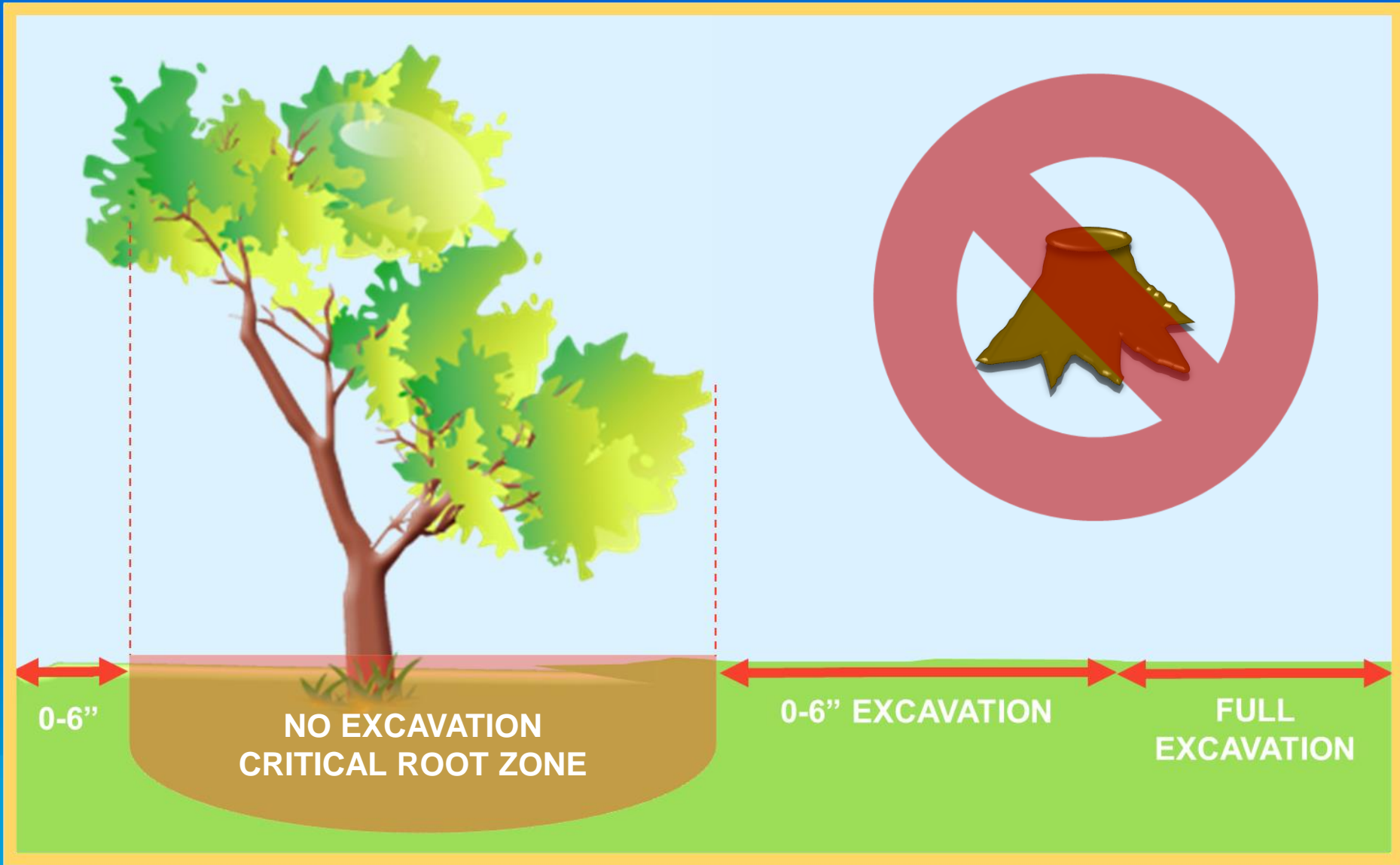
- Trucks & equipment
- Construction noise
- Cars parked on street
- Restricted sidewalk access



Areas that are Excluded



Tree Critical Root Zones



Setbacks

We set-back from:

- Underground storage tanks
- Retaining walls
- Driveways & pathways
- Fences
- Utilities
- Shrubs & plants



Sprinkler Systems

- The contractor is required to restore your sprinkler to pre-construction, working order.



Construction



Soil Replacement Process



Ecology Field Staff

Charissa Young
Construction
Manager



Chris Huff
Construction
Manager

Mathew Kogle
Field Oversight
Coordinator



Jackson Barnes
Field Oversight
Coordinator

Landscape Restoration



Landscape Restoration



Lawn Care



Landscape Care

Call Ecology immediately if you notice settling or water pooling for more than 48 hours.



New lawn is planted

- 1-2" of water per week
- Pick up pet waste
- Compost and fertilize

Ecology takes quarterly photos

Ecology completes a final inspection

1 year

Please call us ...

- Dust in the air
- Trash pick-up blocked
- Schedule
- Contractor's actions



Project Line:

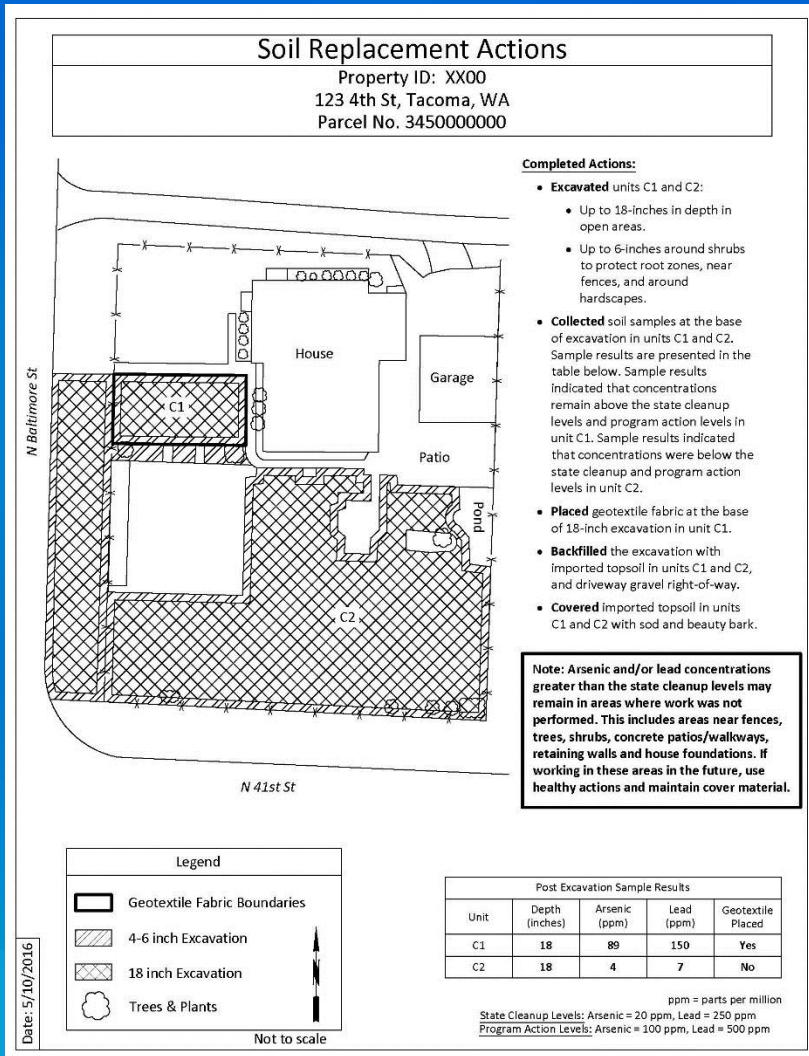
(360) 407-7688

Press 2 for Tacoma Smelter Plume

Staff will return calls within 1 business day



Completion Packet



- Mailed to homeowner and put on public database



[Information about
arsenic and lead](#)

[Healthy Actions](#) to
reduce contact
with soil

Contact
360-407-7688
Press 2 for Tacoma
Smelter Plume

Project Information

Arsenic and lead in the soil

The mining company Asarco once operated two copper smelters in Washington State; in Everett and Tacoma. Emissions of arsenic and lead contaminated soils for miles around the former stacks.

The [Tacoma Smelter Plume](#) covers 1,000 square miles of King, Pierce, and Thurston counties. Ecology and [EPA](#) have been cleaning up yards and play areas in Tacoma since 1993. The [Everett Smelter](#) contaminated a one square mile area in north Everett. Ecology has been cleaning up yards in Everett since 1999.

Search here for soil sampling results and cleanup records!

The database has records for 10,000 properties in Everett, Tacoma and surrounding areas.

1. Enter your address or parcel number and click "search."
2. You will see a map of the area.
3. The property you searched for should be in the center of the screen. Click on the dot, check the address and see what records are available.

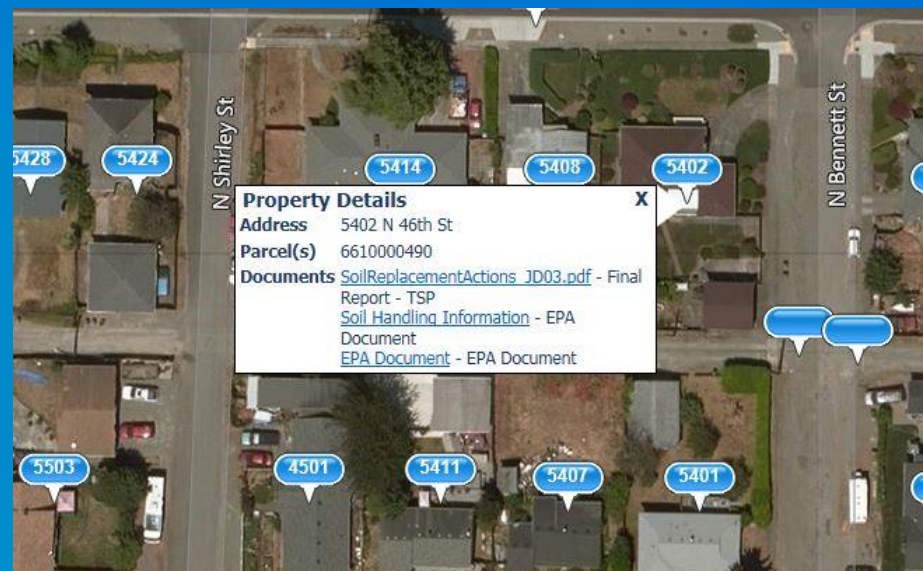
Search for a Property

- OR -

Arsenic in Soil Database

Information:

- Results map & letter
- Soil replacement documentation
- Out of program letters



www.dirtalert.info/myresults

Health Questions

Contact

Jeremy Bush

Email: jbush@tpchd.org

Phone: (253) 255-8135

Website: www.dirtalert.info



Questions?



DEPARTMENT OF
ECOLOGY
State of Washington

Contact

Crescent Calimpong, Outreach Coordinator

Email: Crescent.Calimpong@ecy.wa.gov

Phone: (360) 407-6790

Amy Hargrove, Remediation Manager

Email: Amy.Hargrove@ecy.wa.gov

Phone: (360) 407-6762

Website: ecy.wa.gov/toxics/tacoma-smelter.html



DEPARTMENT OF
ECOLOGY
State of Washington

Questions?