

Groundwater Monitoring Well Installation and Sampling Report

Safeway #1436 Fueling Station/Former My Uncle's Store
7201 Portland Avenue
Tacoma, Washington

February 10, 2017
Terracon Project No. 81167550

Prepared for:
Safeway, Inc.
Tacoma, Washington

Prepared by:
Terracon Consultants, Inc.
Mountlake Terrace, Washington

terracon.com

Terracon

Environmental ■ Facilities ■ Geotechnical ■ Materials

February 10, 2017



Safeway, Inc.
250 Parkcenter Blvd
PO Box 20
Boise, Idaho 83726

Attn: Mr. Robert DeNinno
P: 208.395.4790
E: Robert.deninno@albertsons.com

Re: **Groundwater Monitoring Well Installation and Sampling Report**
Safeway #1436 Fueling Station/Former My Uncle's Store
7201 Portland Avenue
Tacoma, Pierce County, Washington 98404
TPCHD UST Permit #0000648
Terracon Project No: 81167550

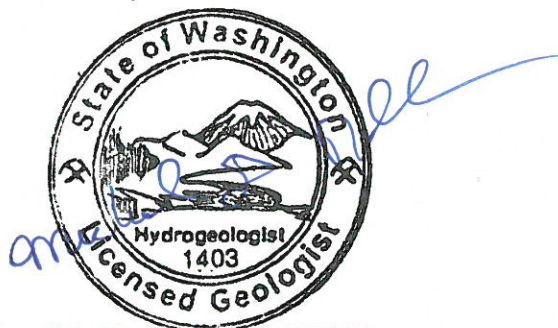
Dear Mr. DeNinno:

Terracon Consultants, Inc. (Terracon) is pleased to submit our report of groundwater monitoring well installation and sampling activities completed at the site referenced above (the Site). The report presents data from recent field activities that included the completion of soil borings, installation of groundwater monitoring wells, and collection of soil and groundwater samples for chemical analysis. The activities were completed in response to a Tacoma Pierce County Health Department (TPCHD), *Notice of Violation and Order to Correct* letter, dated May 4, 2016. Terracon conducted the investigation in general accordance with our Proposal dated October 24, 2016, *Work Plan for Groundwater Monitoring Well Installations and Quarterly Monitoring* dated November 2, 2016 (Terracon Project No. 81167550) and Project Services Agreement dated October 27, 2016.

Terracon appreciates this opportunity to provide environmental services to Safeway, Inc. Should you have any questions or require additional information, please do not hesitate to contact our office.

Sincerely,
Terracon Consultants, Inc.

Heather Gadwa, G.I.T., CESCL
Field Geologist



MICHAEL D. NOLL
Michael D. Noll, Lg., LHg.
Senior Project Manager

1.0 SITE DESCRIPTION.....1
2.0 SCOPE OF SERVICES.....2
 2.1 Standard of Care.....3
 2.2 Additional Scope Limitations3
 2.3 Reliance.....3
3.0 FIELD INVESTIGATION4
 3.1 Soil Sampling.....4
 3.2 Permanent Groundwater Monitoring Wells and Groundwater Sampling.....5
4.0 RESULTS OF THE FIELD INVESTIGATION6
 4.1 Geology/Hydrogeology6
 4.2 Field Screening.....7
5.0 ANALYTICAL RESULTS.....7
 5.1 Soil Analytical Results.....8
 5.2 Groundwater Analytical Results8
 5.3 Quality Assurance/Quality Control Results.....9
7.0 FINDINGS AND CONCLUSIONS10
8.0 RECOMMENDATIONS11

APPENDIX A – EXHIBITS

- Exhibit 1 – Topographic Map
- Exhibit 2 – Site Diagram
- Exhibit 3 – Groundwater Contour and Flow Map
- Exhibit 4 – Site Diagram with Soil Concentrations
- Exhibit 5 – Site Diagram with Groundwater Concentrations

APPENDIX B – TABLES

- Table 1 – Summary of Soil Analytical Results
- Table 2 – Summary of Groundwater Analytical Results

APPENDIX C – SOIL BORING LOGS

- Boring Logs for MW1 through MW4

APPENDIX D – ANALYTICAL REPORTS AND CHAIN OF CUSTODY FORMS

Groundwater Monitoring Well Installation and Sampling Report
SAFEWAY #1436 FUELING STATION/Former My Uncle's Store
7201 Portland Avenue
TACOMA, WASHINGTON

Terracon Project No.81167550
February 10, 2017

1.0 SITE DESCRIPTION

The Safeway store property is an approximately 4.43-acre tract of land (Pierce County tax parcel 0320274090) located on the southeast corner of Portland Avenue and East 72nd Street in Tacoma, Washington. The northwest portion of the property parcel (the Site) was developed as a gasoline station about 1953 and operated until the 1970s. A Chevron-branded gasoline station/convenience store (My Uncle's Store) was constructed on the Site in the late 1970s and operated until 2001, when the underground storage tanks (USTs) were removed. According to Washington State Department of Ecology (Ecology) online records, the former Chevron facility was most recently equipped with three 10,000-gallon single-walled steel USTs that were installed in 1982 and upgraded in 1997. A Safeway fueling station was constructed on the Site in 2002. The Safeway fueling station consists of two 20,000-gallon jacketed steel USTs. Double-walled fiberglass piping supplies fuel to dispensers located on seven dispenser islands, which are covered with a canopy.

The Site location is depicted on Exhibit 1 in Appendix A, a portion of the 1994 Tacoma South USGS Topographic map. The Site layout and surrounding properties are shown on Exhibit 2 in Appendix A, including the locations of current site structures, former USTs and dispensers, approximate extents of the former UST removal and remedial excavation, and the current groundwater monitoring wells.

Environmental Partners, Inc. (EPI) advanced four soil borings at the Site (TB-1 through TB-4) to depths ranging from 21.5 to 36.5 feet below the ground surface (bgs) in October 2000. EPI reported that groundwater was not encountered in the borings to the maximum depth explored (36.5 feet bgs). Soil samples collected from three of the borings at depths ranging from 1.5 to 5 feet bgs contained gasoline-range total petroleum hydrocarbons (TPH) and benzene at concentrations exceeding the Washington State Model Toxics Control Act (MTCA) Method A cleanup levels.

The My Uncle's Store USTs, dispensers, and product piping were excavated and removed in December 2001. Soil with gasoline-range TPH and benzene exceeding MTCA Method A cleanup levels and the presence of water with a petroleum sheen in the UST removal excavation were

documented during the UST system removal work, and a confirmed release of petroleum hydrocarbons was reported to Ecology by EPI on December 14, 2001.

Petroleum-contaminated soil (PCS) was excavated and removed from the northwestern portion of the former Uncle's Store UST system in January 2002. EPI collected 210 soil samples from the excavation for laboratory analysis, including 68 samples from the excavation bottom and 142 samples from the excavation sidewalls. The final soil excavation measured approximately 96 feet by 115 feet, and 13 feet deep. Approximately 5,100 tons of PCS were removed from the excavation for offsite disposal. Approximately 54,000 gallons of hydrocarbon-impacted water with some petroleum sheen were also removed from the excavation, treated, and disposed in the City of Tacoma sanitary sewer system. According to EPI, very little groundwater entered the excavation; the majority of the water removed from the excavation was from surface runoff and rainwater.

Soil samples collected from the final northern and western extents of the excavation at depths ranging from 3 to 13 feet bgs contained gasoline-range TPH concentrations ranging from 53 to 6,500 milligrams per kilogram (mg/kg) and/or benzene concentrations ranging from 0.08 to 99 mg/kg, which exceed the MTCA Method A cleanup levels of 30 mg/kg (when benzene is present) and 0.03 mg/kg, respectively. Soil samples collected from the final extent of the southern and eastern excavation sidewalls and from the excavation bottom reportedly did not contain contaminants exceeding the MTCA Method A cleanup levels.

2.0 SCOPE OF SERVICES

Terracon's scope of work was conducted in general accordance with our proposal, dated October 24, 2016; *Work Plan for Groundwater Monitoring Well Installations and Quarterly Monitoring*, dated November 2, 2016; and Albertsons Project Services Agreement, dated October 27, 2016. Our scope of services included completion of the following tasks:

- Perform pre-mobilization activities including public and private underground utility clearances, and prepare a site-specific health and safety plan;
- Advance four soil borings for the collection of soil and groundwater samples;
- Install permanent groundwater monitoring wells in the four soil borings;
- Complete laboratory analyses of soil and groundwater samples; and
- Prepare this Groundwater Monitoring Well Installation and Sampling summary report.

The objective of the groundwater monitoring well installation and sampling work was to conduct additional soil and groundwater assessments along the northern and western edge of the existing fueling station. The investigation is in response to TPCHD's request to provide additional site

characterization data near a former UST removal excavation completed prior to the construction of the current fueling station.

2.1 Standard of Care

Terracon's services were performed in a manner consistent with generally accepted practices of the profession undertaken in similar studies in the same geographical area during the same time. Terracon makes no warranties, either express or implied, regarding the findings, conclusions, or recommendations. Please note that Terracon does not warrant the work of laboratories, regulatory agencies, or other third parties supplying information used in the preparation of the report. These services were performed in accordance with the scope of work agreed with you, our client, as reflected in our proposal and work plan

2.2 Additional Scope Limitations

Findings, conclusions, and recommendations resulting from these services are based upon information derived from the on-site activities and other services performed under this scope of work; such information is subject to change over time. Certain indicators of the presence of hazardous substances, petroleum products, or other constituents may have been latent, inaccessible, unobservable, non-detectable, or not present during these services. We cannot represent that the Property contains no hazardous substances, toxic materials, petroleum products, or other latent conditions beyond those identified during this investigation. Subsurface conditions may vary from those encountered at specific borings or wells or during other surveys, tests, assessments, investigations, or exploratory services. The data, interpretations, findings, and our recommendations are based solely upon data obtained at the time and within the scope of these services.

2.3 Reliance

This report has been prepared for the exclusive use of Safeway, Inc., and any authorization for use or reliance by any other party (except for a governmental entity having jurisdiction over the site) is prohibited without the express written authorization of Safeway, Inc. and Terracon. Any unauthorized distribution or reuse is at Safeway, Inc.'s sole risk. Notwithstanding the foregoing, reliance by authorized parties will be subject to the terms, conditions, and limitations stated in the proposal, report, and Terracon's Agreement for Services. The limitation of liability defined in the terms and conditions is the aggregate limit of Terracon's liability to Safeway, Inc. and all relying parties unless otherwise agreed in writing.

3.0 FIELD INVESTIGATION

Terracon has a commitment to the safety of all its employees. As such, and in accordance with our *Incident and Injury Free*® safety goals, Terracon conducted the fieldwork under a site-specific health and safety plan developed for this project. Work was performed using the Occupational Health and Safety Administration (OSHA) Level D work attire consisting of hard hats, safety glasses, protective gloves, and protective boots. In an effort to locate underground utilities in the work area, Terracon contacted the Washington State Utility Notification Center to arrange for public underground utility clearance at the site. In addition, a private utility location service was subcontracted by Terracon to identify the locations and depths of the various utilities located near the proposed borings.

3.1 Soil Sampling

Terracon field representatives Mike Noll and Kyle Bennett mobilized to the site on November 28 and 29, 2016 to oversee the drilling of four soil borings at the site. The borings were advanced by Holocene Drilling, Inc., a Washington State-licensed driller, using a track-mounted hollow stem auger (HSA) drill rig. Soil borings identified as MW1 through MW4 were advanced to depths of approximately 20.5 to 21 feet bgs utilizing a HSA drill rig.

Throughout the HSA drilling operation, soil samples were obtained at 5-foot intervals via the Standard Penetration Test Resistance (SPT) method (American Society for Testing and Materials (ASTM_ Method D-1586). An automatic SPT hammer was used to advance a 2-inch diameter steel split-spoon sampler in the borings. The split-spoon sampler was extracted from the borehole and opened for soil sample recovery. Drilling equipment was cleaned using a high pressure washer prior to beginning the project and before beginning each soil boring. Sampling equipment was cleaned using a non-phosphate soap wash and potable water rinse prior to the beginning of the project and before collecting each soil sample. HSA borings were completed as permanent groundwater monitoring wells, as described below.

Terracon field-screened soil samples during the investigation for organic vapors using a calibrated photoionization detector (PID). This device provides a direct reading in parts per million (ppm) of isobutylene equivalents. Upon collection of each soil sample, Terracon put a portion of the sample in a sealable plastic bag. After a stabilization period, Terracon screened the headspace above the soil using the PID. The soil was also field-screened by sheen test. A small portion of the soil was placed into a shallow bowl containing potable water and was observed to see if a sheen was emitted on the top of the water's surface from the soil.

The boring logs in Appendix C include the field screening results for each soil boring. Based on the field screening results, Terracon selected soil samples from each boring for laboratory

analysis. In the absence of field indications of possible impacts, Terracon selected soil samples from the interval most probable for impacts and/or the capillary fringe.

A total of seven soil samples, one from boring MW1 and two each from borings MW2 through MW4, were collected and submitted for laboratory analysis. Soil samples were extracted by hand using disposable gloves and placed directly into laboratory-supplied glassware. Additional samples were collected and were placed on hold at the laboratory pending initial sample analytical results.

Each sample container was labeled with the project number, date, time, boring number, and sample number. Sample containers were placed in a chilled cooler immediately after sampling, and subsequently transported to ALS Laboratory Group (ALS), a Washington State-accredited laboratory, under strict chain-of-custody procedures.

3.2 Permanent Groundwater Monitoring Wells and Groundwater Sampling

Soil borings MW1 through MW4 were completed as permanent groundwater monitoring wells at the completion of soil sampling activities. The permanent groundwater monitoring wells were constructed with the following materials:

- Fifteen feet of 2-inch diameter, 0.010-inch machine slotted poly-vinyl chloride (PVC) well screen with a threaded bottom cap;
- Two-inch diameter, threaded, flush-joint PVC riser pipe to surface;
- Pre-sieved 10/20 grade silica sand for annular sand pack around the well screen from the bottom of the boring to approximately 2-feet above the top of the well screen interval, and overlain by hydrated bentonite chips and concrete; and
- A lockable plug secured with a ground surface flush monument plate.

After completion, groundwater was observed in the permanent wells at depths ranging from approximately 4.5 feet below the top of the well casing (TOC) at MW2 to 7.5 feet below TOC at MW1. The permanent monitoring wells were developed using a clean PVC surge block, dedicated disposable bailers, and a decontaminated electric down-hole submersible pump. Approximately 20 to 50 gallons of well development water were removed from each well before groundwater appeared to be relatively free of fine sediment.

Following the installation of the groundwater monitoring wells, in order to establish the groundwater gradient, Terracon field staff surveyed the TOC elevations of each groundwater monitoring well to an onsite reference point (northwest corner of UST concrete slab). An estimated surface elevation for the reference point was obtained from Google Earth.

After waiting a minimum of 24 hours to allow the developed wells to equilibrate to surrounding aquifer conditions, Terracon representatives Kyle Bennett and Forrest Martin returned to the site on December 1, 2016, to collect groundwater samples. Prior to sample collection, the monitoring wells were opened and exposed to surficial atmospheric conditions, and static depth to groundwater below the TOC was measured in each well. The water level probe was decontaminated using a non-phosphate soap wash and distilled water rinse before use in each well.

Measured depth to water in the wells ranged from 5.23 feet below TOC at MW2 to 5.82 feet below TOC at MW3. Based on depth to water measurements and well TOC survey data, the groundwater elevations at the monitoring wells ranged from 411.83 feet at monitoring MW1 to 414.56 feet at monitoring well MW4 (see Table 2 in Appendix B). Based on groundwater level measurements collected during Terracon's groundwater sampling event, groundwater flow direction at the site is generally toward the west and southwest at a horizontal gradient of approximately 0.015 feet per foot (ft/ft); see Exhibit 3 Groundwater Contour and Flow Map in Appendix A).

The groundwater samples were collected using a peristaltic pump and dedicated tubing. Prior to sample collection, each well was purged at a low flow rate (less than 500 milliliters per minute). During the purging process, groundwater quality parameters, including temperature, electrical conductivity (EC), pH, turbidity, dissolved oxygen (DO), and oxidation-reduction potential (ORP), were measured at regular intervals using a Horiba U-22 water quality meter. Purging was considered complete when three consecutive readings for EC, pH, turbidity, DO, and ORP were observed within 10% of one-another.

Samples were collected using the peristaltic pump. The same low flow rate used for purging the wells was used for collecting the samples. The discharge from the peristaltic pump was directed into laboratory-supplied glassware. The sample containers were labeled with the project number, date, time, well number, and sample number and placed in a chilled cooler immediately after sampling. The sample containers were subsequently transported to ALS under strict chain-of-custody procedures.

4.0 RESULTS OF THE FIELD INVESTIGATION

4.1 Geology/Hydrogeology

In general, Terracon encountered fill material consisting of medium dense brown silty sand with varying amounts of gravel to approximately 10 feet bgs, underlain by dense to very dense glacial drift deposits consisting of gray silty sand and sandy silt with varying amounts of gravel. Intermittent layers of clayey silt were also observed in MW2 and MW4 borings.

Groundwater was observed while drilling at approximately 6.5 feet bgs, primarily in layers of silty sand and sandy silt. The boring logs attached in Appendix C detail the observed soil stratigraphy.

After permanent groundwater monitoring well installation, depth to groundwater in the wells ranged from approximately 5.23 to 5.82 feet below TOC, with a gradient generally toward the west and southwest at approximately 0.015 ft/ft.

4.2 Field Screening

An elevated PID reading of 19.6 ppm was observed in a soil sample collected from MW1 at approximately 11 feet bgs. An elevated PID reading of 715.6 ppm was observed in a soil sample collected from MW2 at approximately 6.5 feet bgs. Boring/monitoring wells MW1 and MW2 are located on the west side of the site.

Petroleum-like odors were also noted in the soil samples with elevated PID readings noted above for the MW1 and MW2 borings. The remaining soil samples did not have notable olfactory and/or visual indications of impacts. The field screening results are summarized on the boring logs in Appendix C.

5.0 ANALYTICAL RESULTS

The selected soil and groundwater samples were analyzed for gasoline-, diesel-, and oil-range total petroleum hydrocarbons (TPH) by Northwest Methods NWTPH-Gx and NWTPH-Dx; and benzene, toluene, ethylbenzene, and total xylenes (BTEX) by EPA Method 8260. Soil samples for gasoline-range TPH and BTEX analyses were collected using EPA Method 5035 sampling kits.

Based on the gasoline-range TPH and BTEX concentrations detected in the groundwater sample collected from monitoring well MW2, as described below in Section 5.2, the MW2 groundwater sample was also analyzed for gasoline additive volatile organic compounds (VOCs) by EPA Method 8260. The list of VOCs analyzed for included ethanol, methyl tert butyl ether (MTBE), 1,2-dibromoethane (EDB), 1,2-dichloroethane (EDC), tert-amyl methyl ether (TAME), di-isopropyl ether, ethyl tert butyl ether, and tert-butanol.

Reported analytical concentrations were compared with the MTCA Method A cleanup levels for unrestricted land use, as applicable.

The laboratory analytical reports and chain-of-custody records are attached in Appendix D. The following sections describe the results of the testing.

5.1 Soil Analytical Results

Gasoline-, Diesel- and Oil-Range TPH

Gasoline-range TPH was identified in soil samples collected from borings MW1 and MW2, located on the western portion of the site.

Gasoline-range TPH was identified in the soil sample collected at approximately 11 feet bgs from boring MW1 and the gasoline-range concentration was detected at 3.6 milligrams per kilogram (mg/kg), below the MTCA Method A cleanup level of 30 mg/kg, for when benzene is present.

Gasoline- and oil-range TPH were identified in the soil sample collected at approximately 6.5 feet bgs from soil boring MW2. The gasoline-range concentration was detected at 23 mg/kg, which is below the MTCA Method A cleanup level of 30 mg/kg (when benzene is present). Oil-range TPH concentration was detected at 410 mg/kg, which is below the MTCA Method A cleanup level of 2,000 mg/kg.

The remaining soil samples analyzed for gasoline-, diesel-, and oil-range TPH did not have reported concentrations above the laboratory method reporting limits (MRLs).

Volatile Organic Compounds: Benzene, Toluene, Ethylbenzene, and Total Xylenes

Benzene, ethylbenzene, and total xylenes were identified in the soil sample collected at approximately 6.5 feet bgs from soil boring MW2. Benzene was detected in the sample at a concentration of 0.30 mg/kg, which exceeds the MTCA Method A cleanup level of 0.03 mg/kg. Ethylbenzene was detected in the sample at a concentration of 0.012 mg/kg, which is below the MTCA method A cleanup level of 6 mg/kg. Total xylenes were detected at a concentration of 0.051 mg/kg, which is below the MTCA Method A cleanup level of 9 mg/kg.

The remaining soil samples analyzed for BTEX did not have reported concentrations above the laboratory MRLs.

The soil analytical results are summarized in Table 1 of Appendix B.

5.2 Groundwater Analytical Results

Gasoline-, Diesel- and Oil-Range TPH

Gasoline- and diesel-range TPH were identified in the groundwater sample collected from monitoring well MW2 at concentrations of 820 micrograms per liter ($\mu\text{g/l}$) and 190 $\mu\text{g/l}$, respectively. The detected concentration of gasoline-range TPH exceeds the MTCA Method A cleanup level of 800 $\mu\text{g/l}$ (when benzene is present). The detected concentration of diesel-range TPH is below the MTCA Method A cleanup level of 500 $\mu\text{g/l}$.

The remaining groundwater samples did not have reported concentrations of gasoline-, diesel-, or oil-range TPH above the laboratory MRLs.

Volatile Organic Compounds: Benzene, Toluene, Ethylbenzene, and Total Xylenes

Benzene, toluene, ethylbenzene, and total xylenes were identified in the groundwater sample collected from MW2 at concentrations of 46 µg/l, 3.1 µg/l, 12 µg/l, and 21 µg/l, respectively. The reported concentration of benzene exceeds the MTCA Method A cleanup level of 5 µg/l. The reported concentrations of toluene, ethylbenzene, total xylenes were below their respective cleanup levels of 1,000 µg/l, 700 µg/l, and 1,000 µg/l, respectively.

The remaining groundwater samples collected from MW1, MW3, and MW4 did not have reported concentrations of BTEX above the laboratory MRLs.

The groundwater analytical results are summarized in Table 2 of Appendix B.

Based on the reported gasoline-range TPH and BTEX concentrations detected in the groundwater sample collected from monitoring well MW2, the sample was additionally analyzed for gasoline oxygenates and additives (ethanol, MTBE, EDB, EDC, TAME, di-isopropyl ether, ethyl tert butyl ether, and tert-butanol) by EPA Method 8260. All results were below the laboratory MRLs. See the laboratory analytical report in Appendix D for more details.

5.3 Quality Assurance/Quality Control Results

The analytical results for the current investigation were checked for completeness upon receipt from the laboratory to ensure that data and quality assurance and quality control (QA/QC) information requested were present. Data quality was assessed by considering hold times, surrogate recovery, method blanks, matrix spike and matrix spike duplicate (MS/MSD) recovery, and detection limits. QA/QC review was completed using guidance described in *USEPA Contract Laboratory Program National Functional Guidelines for Superfund Organic Methods Data Review* (Draft Final, USEPA, 2005). Our evaluation assumes that the QA/QC is correct as reported by the laboratory, and merely provides an interpretation of the QA/QC results.

Hold Times. All analyses were completed within specified hold times.

Surrogate Recoveries. All surrogate recoveries were within laboratory limits.

Method Blanks. Analytes were not detected in any of the laboratory method blanks.

MS/MSD Results. MS and MSD recoveries were all within laboratory limits, and Relative Percent Differences (RPDs) between MS and MSD recoveries were all within laboratory limits.

Laboratory Reporting Limits. Reporting limits were below relevant MTCA cleanup levels.

Based upon our interpretation of quality control information provided by the laboratories, it is our opinion that the overall dataset is useable as qualified for the purposes of this investigation.

6.0 INVESTIGATION DERIVED WASTES

Investigation derived waste (IDW) generated during the groundwater monitoring well installation and sampling activities, which consisted of soil cuttings, equipment decontamination water, and well development/purge water, was containerized in Department of Transportation (DOT) approved 55-gallon drums, properly labeled, and temporarily staged onsite, pending receipt of laboratory analytical results. Seven 55-gallon drums of soil cuttings and five 55-gallon drums of monitoring well purge/equipment decontamination water were staged on the east side of the grocery store building near the loading dock. The drums will be properly disposed at licensed disposal facilities, and copies of the bill of lading/waste manifests will be provided to Albertsons.

7.0 FINDINGS AND CONCLUSIONS

Based on the scope of services described in this report, and subject to the limitations described herein, Terracon concludes the following.

Soil borings MW1 through MW4 were advanced along the western and northern property boundaries in order to address a request from the TPCHD for additional site characterization data. The borings were advanced to approximately 20 feet bgs and completed as groundwater monitoring wells. Fill soil was encountered in the borings to depths of approximately 10 feet bgs, underlain by glacial deposits to the bottom of the borings. Measured depth to groundwater in the wells ranged from approximately 5 to 6 feet bgs, with a horizontal groundwater gradient toward the west and southwest.

Groundwater Soil and groundwater samples collected from the borings/wells were analyzed for gasoline-, diesel-, and oil-range TPH, and for BTEX.

A subsurface soil sample collected at approximately 6.5 feet bgs from boring MW2 (located in the northwest corner of the property) had a concentration of benzene detected at 0.3 mg/kg, which exceeds the MTCA Method A cleanup level of 0.03 mg/kg. The remaining soil sample results were either below the laboratory MRLs or below the MTCA Method A cleanup levels.

The groundwater sample collected from monitoring well MW2 contained gasoline-range TPH and benzene at concentrations of 820 µg/l and 46 µg/l, respectively, which exceed the MTCA Method A cleanup levels of 800 µg/l and 5 µg/l, respectively. The remaining groundwater sample results were either below the laboratory MRLs or below the MTCA Method A cleanup levels. The

groundwater sample collected from monitoring well MW2 was additionally analyzed for gasoline oxygenates and additives; all results were below the laboratory MRLs.

Based on the soil and groundwater sample results, it appears that remnant gasoline-range impacts from the 2002 remedial excavation remain at the northwest corner of the site, in the area of MW2, at concentrations exceeding the MTCA Method A cleanup levels.

8.0 RECOMMENDATIONS

Terracon recommends conducting an additional quarterly groundwater sampling event at the site to confirm the initial sampling results. Based on the initial sample results, low level concentrations of remnant gasoline-related contaminants are isolated to the northwest corner of the property near well MW2, and do not appear to represent a risk to human health or the environment.

Terracon recommends that a copy of this Groundwater Monitoring Well Installation and Sampling Report be submitted to the TPCD for review and comment, and that a copy of the report be submitted to the Ecology Southwest Regional Office.

APPENDIX A - EXHIBITS

Exhibit 1 - Topographic Map

Exhibit 2 - Site Diagram

Exhibit 3 – Groundwater Contour and Flow Map – December 2016

Exhibit 4 – Soil Sample Concentrations

Exhibit 5 – Groundwater Sample Concentrations

PORTLAND AVENUE

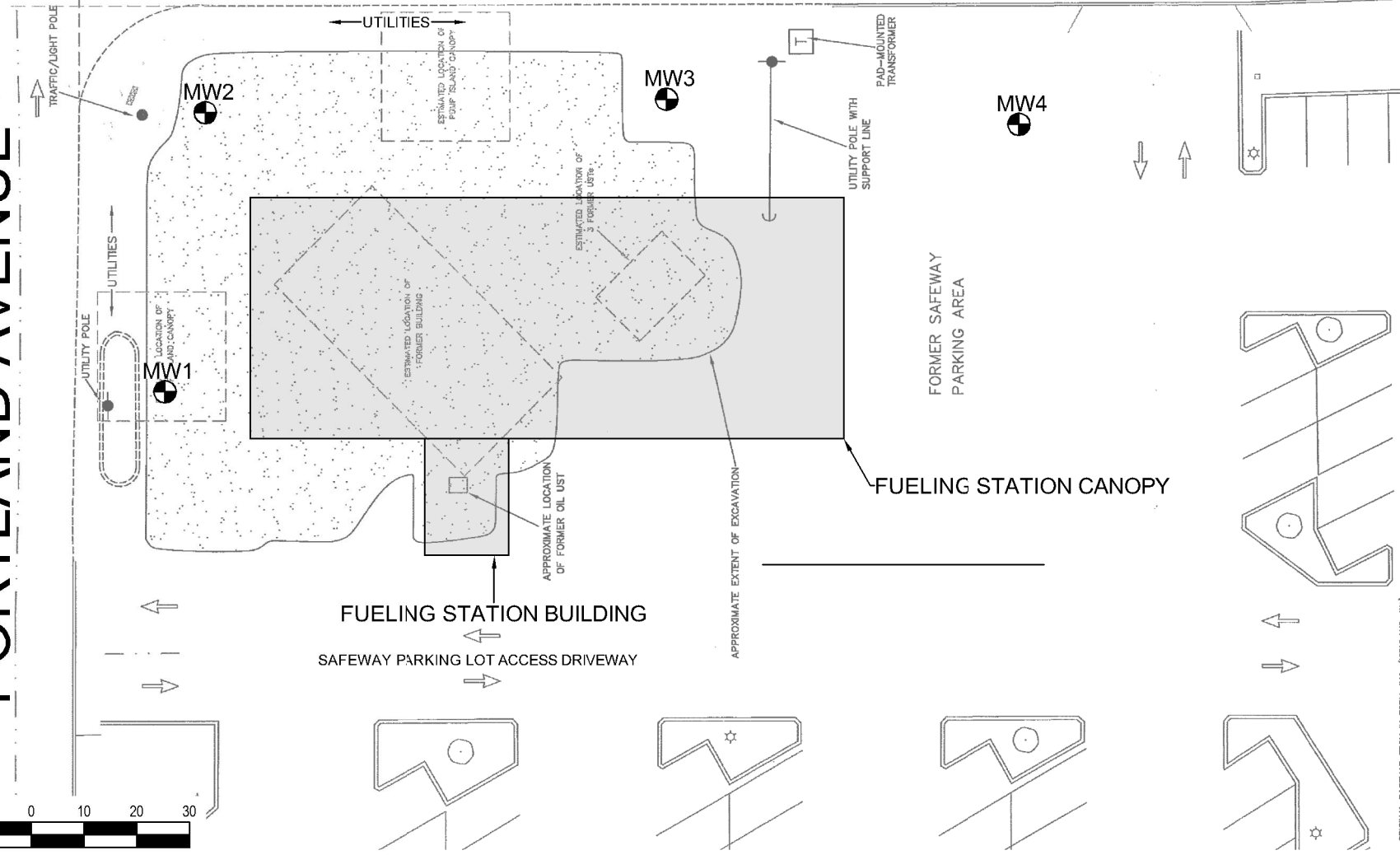
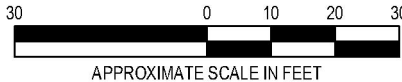
72ND STREET



ENVIRONMENTAL PROJECT 08258.2

ORIGINAL BASEMAP FROM IN FORM, INC. (ORCLAND, WA)

KEY



LEGEND

MW1 APPROXIMATE LOCATION OF PROPOSED MONITORING WELL

Project Mngr:	MDN	Project No:	81167550
Drawn By:	AMP	Scale:	AS SHOWN
Checked By:	MDN	File No:	Exhibit 2
Approved By:	MDN	Date:	December 2016



21905 64th Avenue W, Ste 100 Mountlake Terrace, WA 98043
 PH. (425) 771-3304 FAX. (425) 771-3549

SITE DIAGRAM

Safeway #1436 Fueling Station
 7201 Portland Ave E
 Tacoma, Pierce County, Washington

EXHIBIT

2

PORTLAND AVENUE

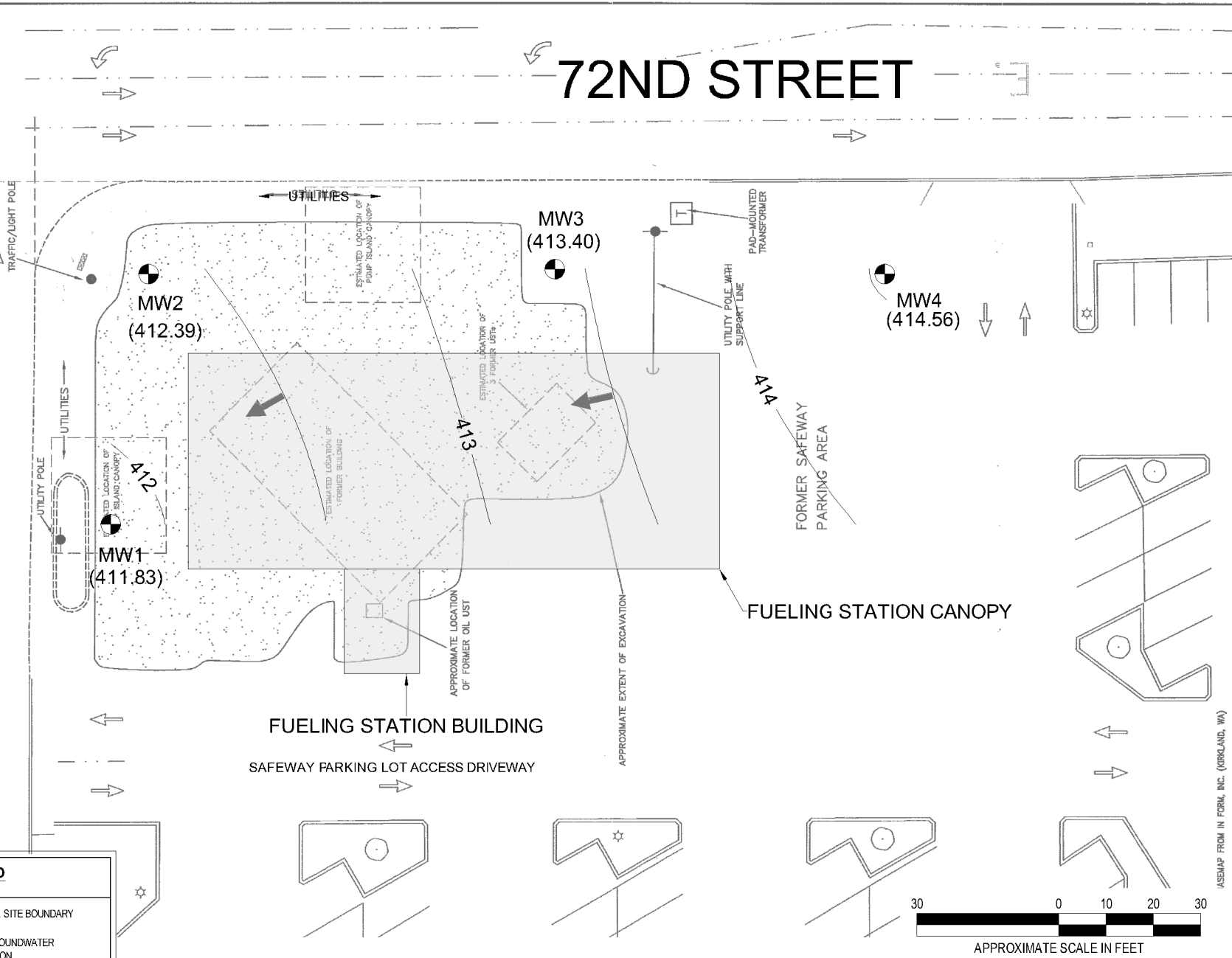
72ND STREET

PROJECT 08268.2

ENVIRONMENTAL

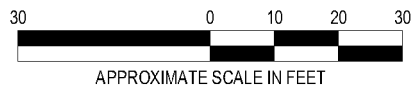
ASSEMAP FROM IN FORM, INC. (KIRKLAND, WA)

D&I



LEGEND

- APPROXIMATE SITE BOUNDARY
- INFERRED GROUNDWATER FLOW DIRECTION
- MW1 (400)** APPROXIMATE LOCATION AND NUMBER OF PERMANENT GROUNDWATER MONITORING WELL ELEVATION (FEET)
- 400 GROUNDWATER CONTOUR AND GROUND WELL ELEVATION (FEET)



Project Mng:	MDN
Drawn By:	HRG
Checked By:	MDN
Approved By:	MDN

Project No:	81167550
Scale:	AS SHOWN
File No:	Exhibit 3
Date:	Decneber 2016

Terracon
Consulting Engineers and Scientists

21905 64th Avenue W, Ste 100 Mountlake Terrace, WA 98043
PH: (425) 771-3304 FAX: (425) 771-3549

GROUNDWATER CONTOUR & FLOW MAP-DECEMBER 2016

Fuel Center LSI
7201 Portland Ave E
Tacoma, Pierce County, Washington

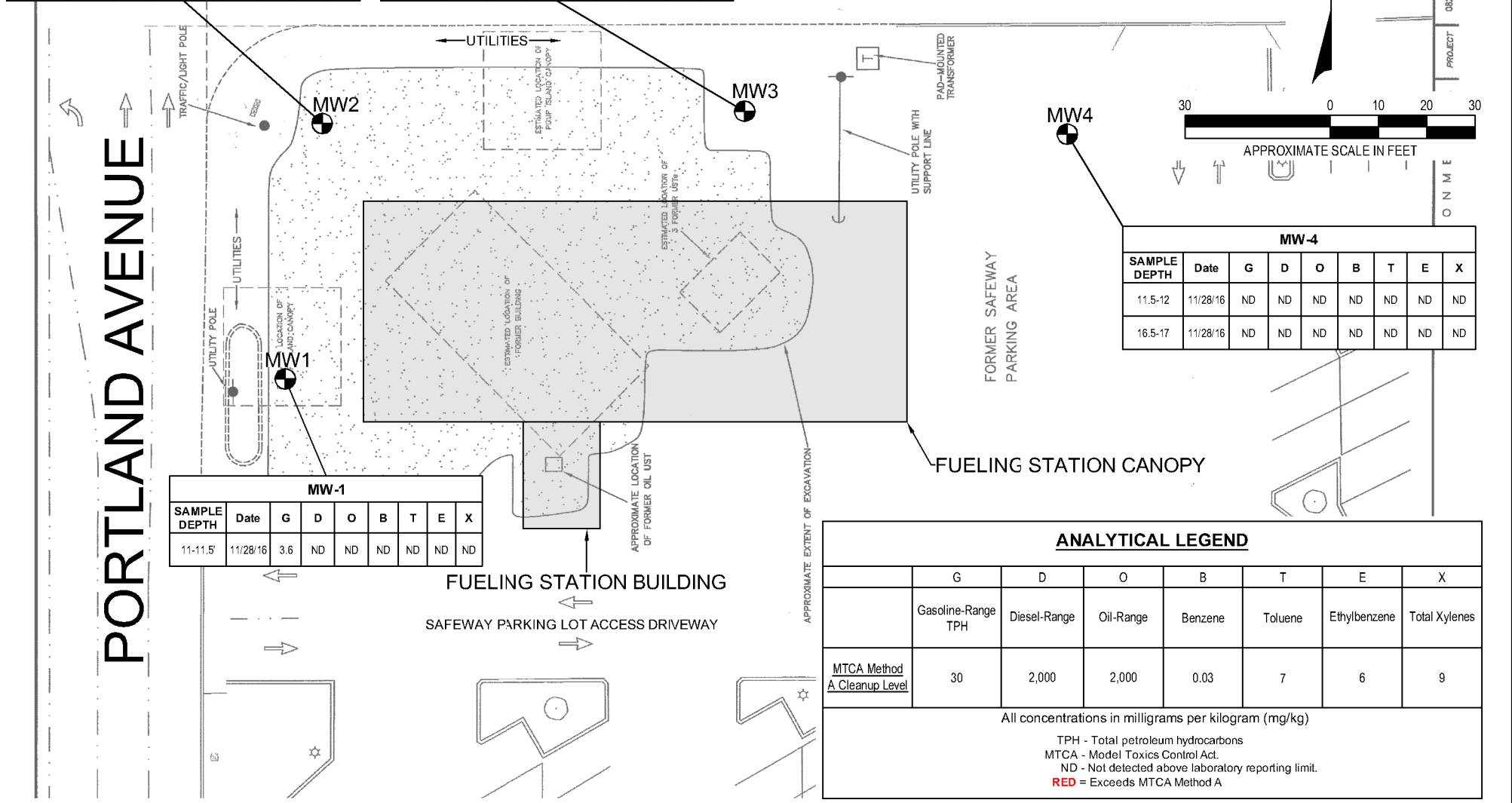
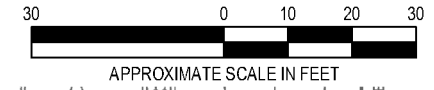
EXHIBIT

3

MW-2								
SAMPLE DEPTH	Date	G	D	O	B	T	E	X
6.5-7	11/28/16	23	ND	410	0.30	ND	0.012	0.051
20-20.5	11/28/16	ND	ND	ND	ND	ND	ND	ND

MW-3								
SAMPLE DEPTH	Date	G	D	O	B	T	E	X
11.5-12	11/28/16	ND	ND	ND	ND	ND	ND	ND
20-20.5	11/28/16	ND	ND	ND	ND	ND	ND	ND

72ND STREET



MW-1								
SAMPLE DEPTH	Date	G	D	O	B	T	E	X
11-11.5	11/28/16	3.6	ND	ND	ND	ND	ND	ND

MW-4								
SAMPLE DEPTH	Date	G	D	O	B	T	E	X
11.5-12	11/28/16	ND	ND	ND	ND	ND	ND	ND
16.5-17	11/28/16	ND	ND	ND	ND	ND	ND	ND

ANALYTICAL LEGEND

	G	D	O	B	T	E	X
	Gasoline-Range TPH	Diesel-Range	Oil-Range	Benzene	Toluene	Ethylbenzene	Total Xylenes
<u>MTCA Method A Cleanup Level</u>	30	2,000	2,000	0.03	7	6	9

All concentrations in milligrams per kilogram (mg/kg)
 TPH - Total petroleum hydrocarbons
 MTCA - Model Toxics Control Act.
 ND - Not detected above laboratory reporting limit.
 RED = Exceeds MTCA Method A

LEGEND	
	MW1 APPROXIMATE LOCATION OF MONITORING WELL

Project Mgr:	MDN	Project No:	81167550
Drawn By:	AMP	Scale:	AS SHOWN
Checked By:	MDN	File No:	Exhibit 4
Approved By:	MDN	Date:	January 2017

Terracon
 Consulting Engineers and Scientists
 21905 64th Avenue W, Ste 100 Mountlake Terrace, WA 98043
 PH. (425) 771-3304 FAX. (425) 771-3549

SOIL SAMPLE CONCENTRATIONS
 Safeway #1436 Fueling Station
 7201 Portland Ave E
 Tacoma, Pierce County, Washington

EXHIBIT	4
---------	---

PORTLAND AVENUE

72ND STREET

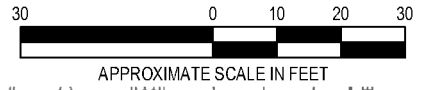


MW2							
Date	G	D	O	B	T	E	X
11/30/16	820	190	ND	46	3.1	12	21

MW3							
Date	G	D	O	B	T	E	X
11/30/16	ND	ND	ND	ND	ND	ND	ND

MW4							
Date	G	D	O	B	T	E	X
11/30/16	ND	ND	ND	ND	ND	ND	ND

MW1							
Date	G	D	O	B	T	E	X
11/30/16	ND	ND	ND	ND	ND	ND	ND



PROJECT 00258.2

ENVIRONMENT

LEGEND

MW1 APPROXIMATE LOCATION OF MONITORING WELL

INFERRED GROUNDWATER FLOW DIRECTION

Project Mgr:	MDN	Project No:	81167550
Drawn By:	AMP	Scale:	AS SHOWN
Checked By:	MDN	File No:	Exhibit 5
Approved By:	MDN	Date:	January 2017

Terracon
Consulting Engineers and Scientists

21905 64th Avenue W, Ste 100 Mountlake Terrace, WA 98043
PH. (425) 771-3304 FAX. (425) 771-3549

ANALYTICAL LEGEND

	G	D	O	B	T	E	X
	Gasoline-Range TPH	Diesel-Range	Oil-Range	Benzene	Toluene	Ethylbenzene	Total Xylenes
<u>MTCA Method A Cleanup Level</u>	800	500	500	5	1,000	700	1,000

All concentrations in micrograms per liter (µg/l)

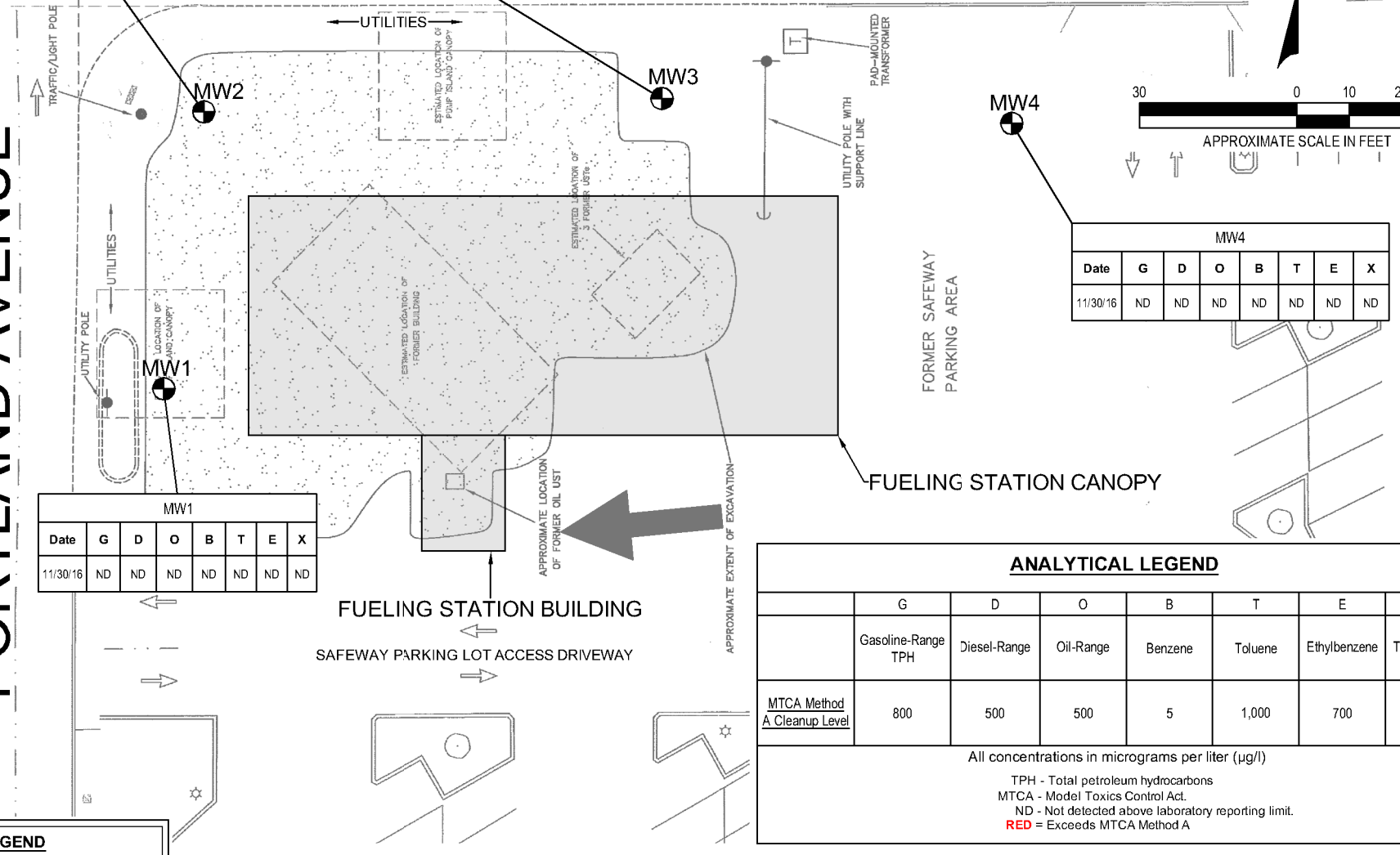
TPH - Total petroleum hydrocarbons
MTCA - Model Toxics Control Act.
ND - Not detected above laboratory reporting limit.
RED = Exceeds MTCA Method A

GROUNDWATER SAMPLE CONCENTRATIONS

Safeway #1436 Fueling Station
7201 Portland Ave E
Tacoma, Pierce County, Washington

EXHIBIT

5



APPENDIX B – TABLES

Table 1 – Summary of Soil Analytical Results

Table 2 – Summary of Groundwater Analytical Results

TABLE 1

SUMMARY OF SOIL ANALYTICAL RESULTS
Safeway #1436 Fueling Station
7201 Portland Avenue
Tacoma, Washington

all concentrations are in milligrams per kilogram (mg/kg)

Boring ID	Sample ID	Sample Date	Sample Depth (ft)	TPH			VOCs			
				Gasoline-Range	Diesel-Range	Oil-Range	Benzene	Toluene	Ethylbenzene	Total Xylenes
MW1	MW1-11	11/28/2016	11-11.5	3.6	ND (<25)	ND (<50)	ND (<0.005)	ND (<0.01)	ND (<0.02)	ND (<0.01)
MW2	MW2-6.5	11/28/2016	6.5-7	23	ND (<25)	410	0.30	ND (0.010)	0.012	0.051
	MW2-20	11/28/2016	20-20.5	ND (3.0)	ND (<25)	ND (<50)	ND (<0.005)	ND (<0.01)	ND (<0.02)	ND (<0.01)
MW3	MW3-11.5	11/28/2016	11.5-12	ND (3.0)	ND (<25)	ND (<50)	ND (<0.005)	ND (<0.01)	ND (<0.02)	ND (<0.01)
	MW3-20	11/28/2016	20-20.5	ND (3.0)	ND (<25)	ND (<50)	ND (<0.005)	ND (<0.01)	ND (<0.02)	ND (<0.01)
MW4	MW4-11.5	11/28/2016	11.5-12	ND (3.0)	ND (<25)	ND (<50)	ND (<0.005)	ND (<0.01)	ND (<0.02)	ND (<0.01)
	MW4-16.5	11/28/2016	16.5-17	ND (3.0)	ND (<25)	ND (<50)	ND (<0.005)	ND (<0.01)	ND (<0.02)	ND (<0.01)
MTCA Method A Cleanup Level				30	2,000	2,000	0.03	7	6	9

Note: Concentrations detected above laboratory method reporting limits (MRLs) are in **BOLD** type.

- TPH - total petroleum hydrocarbons
- MTCA - Model Toxics Control Act
- ND - Not detected above laboratory reporting limit.
- VOCs - Volatile organic compounds

TABLE 2

SUMMARY OF GROUNDWATER ANALYTICAL RESULTS

Safeway #1436 Fueling Station

7201 Portland Avenue

Tacoma, Washington

all concentrations are in micrograms per liter (µg/l)

Boring ID or MW ID	Sample Date	Depth to Groundwater (ft)	Groundwater Elevation (ft)	TPH			VOCs			
				Gasoline-Range	Diesel-Range	Oil-Range	Benzene	Toluene	Ethylbenzene	Total Xylenes
MW1	11/30/2016	5.43	411.83	ND (<50)	ND (<130)	ND (<250)	ND (<2)	ND (<2)	ND (<2)	ND (<2)
MW2	11/30/2016	5.23	412.39	820	190	ND (<250)	46	3.1	12	21
MW3	11/30/2016	5.82	413.40	ND (<50)	ND (<130)	ND (<250)	ND (<2)	ND (<2)	ND (<2)	ND (<2)
MW4	11/30/2016	5.42	414.56	ND (<50)	ND (<130)	ND (<250)	ND (<2)	ND (<2)	ND (<2)	ND (<2)
MTCA Method A Cleanup Level				800	500	500	5	1,000	700	1,000

Note: Concentrations detected above laboratory reporting limits are in **BOLD** type. Concentrations above MTCA cleanup levels are in bold and shaded.

TPH - total petroleum hydrocarbons

VOCs - volatile organic compounds

MTCA - Model Toxics Control Act

ND - Not detected above laboratory reporting limit.

* - MTCA Method B Cleanup Level

NA - Not analyzed

APPENDIX C – SOIL BORING LOGS
Boring Logs for MW1 through MW4


WELL LOG NO. MW1

PROJECT: Safeway #1436 Fueling Station

CLIENT: Albertsons LLC
Boise, Idaho

SITE: 7201 Portland Avenue
Tacoma, Washington

THIS BORING LOG IS NOT VALID IF SEPARATED FROM ORIGINAL REPORT. ENVIRONMENTAL SMART LOG 81167550 LOGS.GPJ TERRACON2012.GDT 12/14/16

GRAPHIC LOG	LOCATION See Exhibit 2	INSTALLATION DETAILS	DEPTH (ft)	WATER LEVEL OBSERVATIONS	SAMPLE TYPE	SPT N-VALUE	OVA/PID (ppm)	Sample Number
	DEPTH: 0.3 MATERIAL DESCRIPTION: ASPHALT 2-3"	Well Completion:						
	FILL - SILTY SAND WITH GRAVEL (SM) , brown, moist, no odor/no sheen	Solid 2" PVG pipe with bentonite seal Solid 2" PVC pipe with sand pack	5	▽		11-15-17 N=32	<1	
	grades to wet soil grades to moist soil			▽				
	DEPTH: 10.0 MATERIAL DESCRIPTION: SILTY SAND WITH GRAVEL (SM) , gray, moist, no odor/no sheen (GLACIAL DRIFT DEPOSIT)	Slotted 2" PVG pipe with sand seal	10			5-43-50/3"	<1 19.6	MW1-11
	grades to brown		15			36-50/1"	1.6	
	DEPTH: 20.6 MATERIAL DESCRIPTION: grades to brown		20			43-50/1"	1	
	Boring Terminated at 20.58 Feet							

The stratification lines represent the approximate transition between differing soil types and/or rock types; in-situ these transitions may be gradual or may occur at different depths than shown.

Hammer Type: Automatic SPT Hammer

Advancement Method:
Hollow Stem Auger

Abandonment Method:

WATER LEVEL OBSERVATIONS

- ▽ While Drilling
- ▽ Measured in permanent well after 48-hour stabilization.

Notes:



Well Started: 11/28/2016	Well Completed: 11/28/2016
Drill Rig: Diedrich LAR	Driller: Holocene Drilling, Inc.
Project No.: 81167550	Exhibit: MW-1

WELL LOG NO. MW2

PROJECT: Safeway #1436 Fueling Station

CLIENT: Albertsons LLC
Boise, Idaho

SITE: 7201 Portland Avenue
Tacoma, Washington

THIS BORING LOG IS NOT VALID IF SEPARATED FROM ORIGINAL REPORT. ENVIRONMENTAL SMART LOG 81167550 LOGS.GPJ TERRACON2012.GDT 12/14/16

GRAPHIC LOG	LOCATION See Exhibit 2	INSTALLATION DETAILS	DEPTH (ft)	WATER LEVEL OBSERVATIONS	SAMPLE TYPE	SPT N-VALUE	OVA/PID (ppm)	Sample Number
	DEPTH	Well Completion:						
	MATERIAL DESCRIPTION							
0.3	TOPSOIL							
	FILL - SILTY SAND WITH GRAVEL (SM) , brown-gray, very loose, moist, no odors/no sheen	Solid 2" PVG pipe with bentonite seal Solid 2" PVC pipe with sand pack						
6.0	SANDY SILT WITH GRAVEL (ML) , gray, loose, moist, petroleum odor/no sheen (GLACIAL DRIFT DEPOSIT) becomes wet		5	▽	X	4-3-3 N=6	715.6	MW2-6.5
10.0	CLAYEY SILT (ML) , gray, hard, wet, no odor/no sheen	Slotted 2" PVC pipe with sand seal	10	▽	X	30-50/3"		
16.0	SANDY SILT WITH GRAVEL (ML) , brown, very dense, moist, no odor/no sheen		15		X	43-50/4"	5.1	
20.8	Boring Terminated at 20.83 Feet		20		X	39-50/4"	2.9	MW2-20

The stratification lines represent the approximate transition between differing soil types and/or rock types; in-situ these transitions may be gradual or may occur at different depths than shown.

Hammer Type: Automatic SPT Hammer

Advancement Method:
Hollow Stem Auger

Abandonment Method:

Notes:
BJW-395

WATER LEVEL OBSERVATIONS

▽ While Drilling
▽ Measured in permanent well after 48-hour stabilization.



Well Started: 11/28/2016

Well Completed: 11/28/2016

Drill Rig: Diedrich LAR

Driller: Holocene Drilling, Inc.

Project No.: 81167550

Exhibit: MW-2

WELL LOG NO. MW3

PROJECT: Safeway #1436 Fueling Station

CLIENT: Albertsons LLC
Boise, Idaho

SITE: 7201 Portland Avenue
Tacoma, Washington

GRAPHIC LOG	LOCATION See Exhibit 2	INSTALLATION DETAILS	DEPTH (ft)	WATER LEVEL OBSERVATIONS	SAMPLE TYPE	SPT N-VALUE	OVA/PID (ppm)	Sample Number
	DEPTH MATERIAL DESCRIPTION	Well Completion:						
0.3	TOPSOIL							
	SILTY SAND WITH GRAVEL (SM) , brown-gray, medium dense, moist, no odor/no sheen (PROBABLE FILL)	Solid 2" PVG pipe with bentonite seal Solid 2" PVC pipe with sand pack						
6.0	SAND WITH SILT AND GRAVEL (SP-SM) , brown, medium dense, moist, no odor/no sheen becomes wet		5	▽	X	10-11-12 N=23		
10.0	SANDY SILT WITH GRAVEL (ML) , brown, medium dense, wet, no odor/no sheen	Slotted 2" PVC pipe with sand seal	10		X	12-17-17 N=34	1.3 MW3-11.5	
15.0			15		X	30-50/4"	1.9	
20.0	SANDY SILT (ML) , gray, hard, wet, no odor/no sheen (GLACIAL DRIFT DEPOSIT)		20		X	50	1.5 MW3-20	
	Boring Terminated at 20.5 Feet							

The stratification lines represent the approximate transition between differing soil types and/or rock types; in-situ these transitions may be gradual or may occur at different depths than shown.

Hammer Type: Automatic SPT Hammer

Advancement Method:
Hollow Stem Auger

Abandonment Method:

WATER LEVEL OBSERVATIONS

▽ While Drilling
▽ Measured in permanent well after 48-hour stabilization.

Notes:



Well Started: 11/28/2016

Well Completed: 11/28/2016

Drill Rig: Diedrich LAR

Driller: Holocene Drilling, Inc.

Project No.: 81167550

Exhibit: MW-3

THIS BORING LOG IS NOT VALID IF SEPARATED FROM ORIGINAL REPORT. ENVIRONMENTAL SMART LOG 81167550 LOGS.GPJ TERRACON2012.GDT 12/14/16

WELL LOG NO. MW4

PROJECT: Safeway #1436 Fueling Station

CLIENT: Albertsons LLC
Boise, Idaho

SITE: 7201 Portland Avenue
Tacoma, Washington

GRAPHIC LOG	LOCATION See Exhibit 2	INSTALLATION DETAILS	DEPTH (ft)	WATER LEVEL OBSERVATIONS	SAMPLE TYPE	SPT N-VALUE	OVA/PID (ppm)	Sample Number
	DEPTH	Well Completion:						
	MATERIAL DESCRIPTION							
0.3	ASPHALT ~3"							
	SILTY SAND WITH GRAVEL (SM) , brown, medium dense, moist, no odor/no sheen (PROBABLE FILL)	Solid 2" PVG pipe with bentonite seal Solid 2" PVC pipe with sand pack						
10.0	CLAYEY SILT (ML) , gray, very stiff, wet, no odor/no sheen	Slotted 2" PVC pipe with sand seal	5	▽		22-10-10 N=20	1.4	
15.0	SANDY SILT (ML) , gray, hard, wet, no odor/no sheen		10	▽		11-29-36 N=65	1	MW4-11.5
20.2	Boring Terminated at 20.16 Feet		15			37-50/5"	1.4	MW4-16.5
			20			50/2"	1.6	

The stratification lines represent the approximate transition between differing soil types and/or rock types; in-situ these transitions may be gradual or may occur at different depths than shown.

Hammer Type: Automatic SPT Hammer

Advancement Method:
Hollow Stem Auger

Abandonment Method:

Notes:

WATER LEVEL OBSERVATIONS

- ▽ While Drilling
- ▽ Measured in permanent well after 48-hour stabilization.



Well Started: 11/28/2016

Well Completed: 11/28/2016

Drill Rig: Diedrich LAR

Driller: Holocene Drilling, Inc.

Project No.: 81167550

Exhibit: MW-4

THIS BORING LOG IS NOT VALID IF SEPARATED FROM ORIGINAL REPORT. ENVIRONMENTAL SMART LOG 81167550 LOGS.GPJ TERRACON2012.GDT 12/14/16

**APPENDIX D – ANALYTICAL REPORT AND CHAIN OF
CUSTODY**



December 5, 2016

Mr. Mike Noll
Terracon
21905 - 64th Ave W, Suite 100
Mountlake Terrace, WA 98043

Dear Mr. Noll,

On November 29th, 7 samples were received by our laboratory and assigned our laboratory project number EV16110185. The project was identified as your 81167550. The sample identification and requested analyses are outlined on the attached chain of custody record.

No abnormalities or nonconformances were observed during the analyses of the project samples.

Please do not hesitate to call me if you have any questions or if I can be of further assistance.

Sincerely,

ALS Laboratory Group

Rick Bagan
Laboratory Director



CERTIFICATE OF ANALYSIS

CLIENT:	Terracon 21905 - 64th Ave W, Suite 100 Mountlake Terrace, WA 98043	DATE:	12/5/2016
CLIENT CONTACT:	Mike Noll	ALS JOB#:	EV16110185
CLIENT PROJECT:	81167550	ALS SAMPLE#:	EV16110185-01
CLIENT SAMPLE ID:	MW1-11	DATE RECEIVED:	11/29/2016
		COLLECTION DATE:	11/28/2016 9:30:00 AM
		WDOE ACCREDITATION:	C601

SAMPLE DATA RESULTS

ANALYTE	METHOD	RESULTS	REPORTING LIMITS	DILUTION FACTOR	UNITS	ANALYSIS DATE	ANALYSIS BY
TPH-Mineral Spirits	NWTPH-GX	3.6	3.0	1	MG/KG	11/30/2016	PAB
TPH-Diesel Range	NWTPH-DX	U	25	1	MG/KG	11/29/2016	EBS
TPH-Oil Range	NWTPH-DX	U	50	1	MG/KG	11/29/2016	EBS
Benzene	EPA-8260	U	0.0050	1	MG/KG	12/02/2016	DLC
Toluene	EPA-8260	U	0.010	1	MG/KG	12/02/2016	DLC
Ethylbenzene	EPA-8260	U	0.010	1	MG/KG	12/02/2016	DLC
m,p-Xylene	EPA-8260	U	0.020	1	MG/KG	12/02/2016	DLC
o-Xylene	EPA-8260	U	0.010	1	MG/KG	12/02/2016	DLC

SURROGATE	METHOD	%REC	ANALYSIS DATE	ANALYSIS BY
TFT	NWTPH-GX	81.3	11/30/2016	PAB
C25	NWTPH-DX	79.2	11/29/2016	EBS
Toluene-d8	EPA-8260	99.8	12/02/2016	DLC

U - Analyte analyzed for but not detected at level above reporting limit.
Chromatogram indicates that it is likely that sample contains mineral spirits.



CERTIFICATE OF ANALYSIS

CLIENT:	Terracon 21905 - 64th Ave W, Suite 100 Mountlake Terrace, WA 98043	DATE:	12/5/2016
CLIENT CONTACT:	Mike Noll	ALS JOB#:	EV16110185
CLIENT PROJECT:	81167550	ALS SAMPLE#:	EV16110185-02
CLIENT SAMPLE ID	MW2-6.5	DATE RECEIVED:	11/29/2016
		COLLECTION DATE:	11/28/2016 11:25:00 AM
		WDOE ACCREDITATION:	C601

SAMPLE DATA RESULTS

ANALYTE	METHOD	RESULTS	REPORTING LIMITS	DILUTION FACTOR	UNITS	ANALYSIS DATE	ANALYSIS BY
TPH-Volatile Range	NWTPH-GX	23	3.0	1	MG/KG	11/30/2016	PAB
TPH-Diesel Range	NWTPH-DX	U	25	1	MG/KG	11/30/2016	EBS
TPH-Oil Range	NWTPH-DX	410	50	1	MG/KG	11/30/2016	EBS
Benzene	EPA-8260	0.30	0.0050	1	MG/KG	12/03/2016	DLC
Toluene	EPA-8260	U	0.010	1	MG/KG	12/03/2016	DLC
Ethylbenzene	EPA-8260	0.012	0.010	1	MG/KG	12/03/2016	DLC
m,p-Xylene	EPA-8260	0.051	0.020	1	MG/KG	12/03/2016	DLC
o-Xylene	EPA-8260	U	0.010	1	MG/KG	12/03/2016	DLC

SURROGATE	METHOD	%REC	ANALYSIS DATE	ANALYSIS BY
TFT	NWTPH-GX	112	11/30/2016	PAB
C25	NWTPH-DX	105	11/30/2016	EBS
Toluene-d8	EPA-8260	96.3	12/03/2016	DLC
Toluene-d8	EPA-8260	101	12/03/2016	DLC

U - Analyte analyzed for but not detected at level above reporting limit.
Chromatogram indicates that it is likely that sample contains weathered gasoline and lube oil.



CERTIFICATE OF ANALYSIS

CLIENT:	Terracon 21905 - 64th Ave W, Suite 100 Mountlake Terrace, WA 98043	DATE:	12/5/2016
CLIENT CONTACT:	Mike Noll	ALS JOB#:	EV16110185
CLIENT PROJECT:	81167550	ALS SAMPLE#:	EV16110185-03
CLIENT SAMPLE ID	MW2-20	DATE RECEIVED:	11/29/2016
		COLLECTION DATE:	11/28/2016 11:50:00 AM
		WDOE ACCREDITATION:	C601

SAMPLE DATA RESULTS

ANALYTE	METHOD	RESULTS	REPORTING LIMITS	DILUTION FACTOR	UNITS	ANALYSIS DATE	ANALYSIS BY
TPH-Volatile Range	NWTPH-GX	U	3.0	1	MG/KG	11/29/2016	PAB
TPH-Diesel Range	NWTPH-DX	U	25	1	MG/KG	11/29/2016	EBS
TPH-Oil Range	NWTPH-DX	U	50	1	MG/KG	11/29/2016	EBS
Benzene	EPA-8260	U	0.0050	1	MG/KG	12/02/2016	DLC
Toluene	EPA-8260	U	0.010	1	MG/KG	12/02/2016	DLC
Ethylbenzene	EPA-8260	U	0.010	1	MG/KG	12/02/2016	DLC
m,p-Xylene	EPA-8260	U	0.020	1	MG/KG	12/02/2016	DLC
o-Xylene	EPA-8260	U	0.010	1	MG/KG	12/02/2016	DLC

SURROGATE	METHOD	%REC	ANALYSIS DATE	ANALYSIS BY
TFT	NWTPH-GX	116	11/29/2016	PAB
C25	NWTPH-DX	82.9	11/29/2016	EBS
Toluene-d8	EPA-8260	98.9	12/02/2016	DLC

U - Analyte analyzed for but not detected at level above reporting limit.

CERTIFICATE OF ANALYSIS

CLIENT:	Terracon 21905 - 64th Ave W, Suite 100 Mountlake Terrace, WA 98043	DATE:	12/5/2016
CLIENT CONTACT:	Mike Noll	ALS JOB#:	EV16110185
CLIENT PROJECT:	81167550	ALS SAMPLE#:	EV16110185-04
CLIENT SAMPLE ID	MW3-11.5	DATE RECEIVED:	11/29/2016
		COLLECTION DATE:	11/28/2016 1:50:00 PM
		WDOE ACCREDITATION:	C601

SAMPLE DATA RESULTS

ANALYTE	METHOD	RESULTS	REPORTING LIMITS	DILUTION FACTOR	UNITS	ANALYSIS DATE	ANALYSIS BY
TPH-Volatile Range	NWTPH-GX	U	3.0	1	MG/KG	11/29/2016	PAB
TPH-Diesel Range	NWTPH-DX	U	25	1	MG/KG	11/29/2016	EBS
TPH-Oil Range	NWTPH-DX	U	50	1	MG/KG	11/29/2016	EBS
Benzene	EPA-8260	U	0.0050	1	MG/KG	12/02/2016	DLC
Toluene	EPA-8260	U	0.010	1	MG/KG	12/02/2016	DLC
Ethylbenzene	EPA-8260	U	0.010	1	MG/KG	12/02/2016	DLC
m,p-Xylene	EPA-8260	U	0.020	1	MG/KG	12/02/2016	DLC
o-Xylene	EPA-8260	U	0.010	1	MG/KG	12/02/2016	DLC

SURROGATE	METHOD	%REC	ANALYSIS DATE	ANALYSIS BY
TFT	NWTPH-GX	94.5	11/29/2016	PAB
C25	NWTPH-DX	74.6	11/29/2016	EBS
Toluene-d8	EPA-8260	98.2	12/02/2016	DLC

U - Analyte analyzed for but not detected at level above reporting limit.



CERTIFICATE OF ANALYSIS

CLIENT:	Terracon 21905 - 64th Ave W, Suite 100 Mountlake Terrace, WA 98043	DATE:	12/5/2016
CLIENT CONTACT:	Mike Noll	ALS JOB#:	EV16110185
CLIENT PROJECT:	81167550	ALS SAMPLE#:	EV16110185-05
CLIENT SAMPLE ID	MW3-20	DATE RECEIVED:	11/29/2016
		COLLECTION DATE:	11/28/2016 2:15:00 PM
		WDOE ACCREDITATION:	C601

SAMPLE DATA RESULTS

ANALYTE	METHOD	RESULTS	REPORTING LIMITS	DILUTION FACTOR	UNITS	ANALYSIS DATE	ANALYSIS BY
TPH-Volatile Range	NWTPH-GX	U	3.0	1	MG/KG	11/29/2016	PAB
TPH-Diesel Range	NWTPH-DX	U	25	1	MG/KG	11/29/2016	EBS
TPH-Oil Range	NWTPH-DX	U	50	1	MG/KG	11/29/2016	EBS
Benzene	EPA-8260	U	0.0050	1	MG/KG	12/02/2016	DLC
Toluene	EPA-8260	U	0.010	1	MG/KG	12/02/2016	DLC
Ethylbenzene	EPA-8260	U	0.010	1	MG/KG	12/02/2016	DLC
m,p-Xylene	EPA-8260	U	0.020	1	MG/KG	12/02/2016	DLC
o-Xylene	EPA-8260	U	0.010	1	MG/KG	12/02/2016	DLC

SURROGATE	METHOD	%REC	ANALYSIS DATE	ANALYSIS BY
TFT	NWTPH-GX	100	11/29/2016	PAB
C25	NWTPH-DX	94.0	11/29/2016	EBS
Toluene-d8	EPA-8260	96.4	12/02/2016	DLC

U - Analyte analyzed for but not detected at level above reporting limit.



CERTIFICATE OF ANALYSIS

CLIENT:	Terracon 21905 - 64th Ave W, Suite 100 Mountlake Terrace, WA 98043	DATE:	12/5/2016
CLIENT CONTACT:	Mike Noll	ALS JOB#:	EV16110185
CLIENT PROJECT:	81167550	ALS SAMPLE#:	EV16110185-06
CLIENT SAMPLE ID	MW4-11.5	DATE RECEIVED:	11/29/2016
		COLLECTION DATE:	11/28/2016 3:35:00 PM
		WDOE ACCREDITATION:	C601

SAMPLE DATA RESULTS

ANALYTE	METHOD	RESULTS	REPORTING LIMITS	DILUTION FACTOR	UNITS	ANALYSIS DATE	ANALYSIS BY
TPH-Volatile Range	NWTPH-GX	U	3.0	1	MG/KG	11/29/2016	PAB
TPH-Diesel Range	NWTPH-DX	U	25	1	MG/KG	11/29/2016	EBS
TPH-Oil Range	NWTPH-DX	U	50	1	MG/KG	11/29/2016	EBS
Benzene	EPA-8260	U	0.0050	1	MG/KG	12/02/2016	DLC
Toluene	EPA-8260	U	0.010	1	MG/KG	12/02/2016	DLC
Ethylbenzene	EPA-8260	U	0.010	1	MG/KG	12/02/2016	DLC
m,p-Xylene	EPA-8260	U	0.020	1	MG/KG	12/02/2016	DLC
o-Xylene	EPA-8260	U	0.010	1	MG/KG	12/02/2016	DLC

SURROGATE	METHOD	%REC	ANALYSIS DATE	ANALYSIS BY
TFT	NWTPH-GX	100	11/29/2016	PAB
C25	NWTPH-DX	87.8	11/29/2016	EBS
Toluene-d8	EPA-8260	97.5	12/02/2016	DLC

U - Analyte analyzed for but not detected at level above reporting limit.

CERTIFICATE OF ANALYSIS

CLIENT:	Terracon 21905 - 64th Ave W, Suite 100 Mountlake Terrace, WA 98043	DATE:	12/5/2016
CLIENT CONTACT:	Mike Noll	ALS JOB#:	EV16110185
CLIENT PROJECT:	81167550	ALS SAMPLE#:	EV16110185-07
CLIENT SAMPLE ID	MW4-16.5	DATE RECEIVED:	11/29/2016
		COLLECTION DATE:	11/28/2016 3:45:00 PM
		WDOE ACCREDITATION:	C601

SAMPLE DATA RESULTS

ANALYTE	METHOD	RESULTS	REPORTING LIMITS	DILUTION FACTOR	UNITS	ANALYSIS DATE	ANALYSIS BY
TPH-Volatile Range	NWTPH-GX	U	3.0	1	MG/KG	11/30/2016	PAB
TPH-Diesel Range	NWTPH-DX	U	25	1	MG/KG	11/29/2016	EBS
TPH-Oil Range	NWTPH-DX	U	50	1	MG/KG	11/29/2016	EBS
Benzene	EPA-8260	U	0.0050	1	MG/KG	12/02/2016	DLC
Toluene	EPA-8260	U	0.010	1	MG/KG	12/02/2016	DLC
Ethylbenzene	EPA-8260	U	0.010	1	MG/KG	12/02/2016	DLC
m,p-Xylene	EPA-8260	U	0.020	1	MG/KG	12/02/2016	DLC
o-Xylene	EPA-8260	U	0.010	1	MG/KG	12/02/2016	DLC

SURROGATE	METHOD	%REC	ANALYSIS DATE	ANALYSIS BY
TFT	NWTPH-GX	79.1	11/30/2016	PAB
C25	NWTPH-DX	76.7	11/29/2016	EBS
Toluene-d8	EPA-8260	98.4	12/02/2016	DLC

U - Analyte analyzed for but not detected at level above reporting limit.



CERTIFICATE OF ANALYSIS

CLIENT:	Terracon 21905 - 64th Ave W, Suite 100 Mountlake Terrace, WA 98043	DATE:	12/5/2016
CLIENT CONTACT:	Mike Noll	ALS SDG#:	EV16110185
CLIENT PROJECT:	81167550	WDOE ACCREDITATION:	C601

LABORATORY BLANK RESULTS

MBG-112816S - Batch 110268 - Soil by NWTPH-GX

ANALYTE	METHOD	RESULTS	UNITS	REPORTING LIMITS	ANALYSIS DATE	ANALYSIS BY
TPH-Mineral Spirits	NWTPH-GX	U	MG/KG	3.0	11/28/2016	PAB
TPH-Volatile Range	NWTPH-GX	U	MG/KG	3.0	11/28/2016	PAB

U - Analyte analyzed for but not detected at level above reporting limit.

MB-112816S - Batch 110254 - Soil by NWTPH-DX

ANALYTE	METHOD	RESULTS	UNITS	REPORTING LIMITS	ANALYSIS DATE	ANALYSIS BY
TPH-Diesel Range	NWTPH-DX	U	MG/KG	25	11/28/2016	EBS
TPH-Oil Range	NWTPH-DX	U	MG/KG	50	11/28/2016	EBS

U - Analyte analyzed for but not detected at level above reporting limit.

MB-120216S - Batch 110431 - Soil by EPA-8260

ANALYTE	METHOD	RESULTS	UNITS	REPORTING LIMITS	ANALYSIS DATE	ANALYSIS BY
1,1-Dichloroethene	EPA-8260	U	MG/KG	0.010	12/02/2016	DLC
Benzene	EPA-8260	U	MG/KG	0.0050	12/02/2016	DLC
Toluene	EPA-8260	U	MG/KG	0.010	12/02/2016	DLC
Ethylbenzene	EPA-8260	U	MG/KG	0.010	12/02/2016	DLC
m,p-Xylene	EPA-8260	U	MG/KG	0.020	12/02/2016	DLC
o-Xylene	EPA-8260	U	MG/KG	0.010	12/02/2016	DLC

U - Analyte analyzed for but not detected at level above reporting limit.



CERTIFICATE OF ANALYSIS

CLIENT:	Terracon 21905 - 64th Ave W, Suite 100 Mountlake Terrace, WA 98043	DATE:	12/5/2016
CLIENT CONTACT:	Mike Noll	ALS SDG#:	EV16110185
CLIENT PROJECT:	81167550	WDOE ACCREDITATION:	C601

LABORATORY CONTROL SAMPLE RESULTS

ALS Test Batch ID: 110268 - Soil by NWTPH-GX

SPIKED COMPOUND	METHOD	%REC	RPD	QUAL	LIMITS		ANALYSIS DATE	ANALYSIS BY
					MIN	MAX		
TPH-Volatile Range - BS	NWTPH-GX	89.8			66.5	122.7	11/28/2016	PAB
TPH-Volatile Range - BSD	NWTPH-GX	90.1	0		66.5	122.7	11/28/2016	PAB

ALS Test Batch ID: 110254 - Soil by NWTPH-DX

SPIKED COMPOUND	METHOD	%REC	RPD	QUAL	LIMITS		ANALYSIS DATE	ANALYSIS BY
					MIN	MAX		
TPH-Diesel Range - BS	NWTPH-DX	101			75.5	122.1	11/28/2016	EBS
TPH-Diesel Range - BSD	NWTPH-DX	100	0		75.5	122.1	11/28/2016	EBS

ALS Test Batch ID: 110431 - Soil by EPA-8260

SPIKED COMPOUND	METHOD	%REC	RPD	QUAL	LIMITS		ANALYSIS DATE	ANALYSIS BY
					MIN	MAX		
1,1-Dichloroethene - BS	EPA-8260	98.3			73	138	12/02/2016	DLC
1,1-Dichloroethene - BSD	EPA-8260	110	11		73	138	12/02/2016	DLC
Benzene - BS	EPA-8260	86.1			75	138	12/02/2016	DLC
Benzene - BSD	EPA-8260	94.5	9		75	138	12/02/2016	DLC
Toluene - BS	EPA-8260	91.4			76	134	12/02/2016	DLC
Toluene - BSD	EPA-8260	100	9		76	134	12/02/2016	DLC

APPROVED BY

Laboratory Director



December 6, 2016

Mr. Mike Noll
Terracon
21905 - 64th Ave W, Suite 100
Mountlake Terrace, WA 98043

Dear Mr. Noll,

On December 2nd, 4 samples were received by our laboratory and assigned our laboratory project number EV16120017. The project was identified as your 81167550. The sample identification and requested analyses are outlined on the attached chain of custody record.

No abnormalities or nonconformances were observed during the analyses of the project samples.

Please do not hesitate to call me if you have any questions or if I can be of further assistance.

Sincerely,

ALS Laboratory Group

Rick Bagan
Laboratory Director



CERTIFICATE OF ANALYSIS

CLIENT:	Terracon 21905 - 64th Ave W, Suite 100 Mountlake Terrace, WA 98043	DATE:	12/6/2016
CLIENT CONTACT:	Mike Noll	ALS JOB#:	EV16120017
CLIENT PROJECT:	81167550	ALS SAMPLE#:	EV16120017-01
CLIENT SAMPLE ID	MW1	DATE RECEIVED:	12/02/2016
		COLLECTION DATE:	12/1/2016 9:00:00 AM
		WDOE ACCREDITATION:	C601

SAMPLE DATA RESULTS

ANALYTE	METHOD	RESULTS	REPORTING LIMITS	DILUTION FACTOR	UNITS	ANALYSIS DATE	ANALYSIS BY
TPH-Volatile Range	NWTPH-GX	U	50	1	UG/L	12/02/2016	PAB
TPH-Diesel Range	NWTPH-DX	U	130	1	UG/L	12/05/2016	EBS
TPH-Oil Range	NWTPH-DX	U	250	1	UG/L	12/05/2016	EBS
Benzene	EPA-8260	U	2.0	1	UG/L	12/05/2016	DLC
Toluene	EPA-8260	U	2.0	1	UG/L	12/05/2016	DLC
Ethylbenzene	EPA-8260	U	2.0	1	UG/L	12/05/2016	DLC
m,p-Xylene	EPA-8260	U	4.0	1	UG/L	12/05/2016	DLC
o-Xylene	EPA-8260	U	2.0	1	UG/L	12/05/2016	DLC

SURROGATE	METHOD	%REC	ANALYSIS DATE	ANALYSIS BY
TFT	NWTPH-GX	90.4	12/02/2016	PAB
C25	NWTPH-DX	75.6	12/05/2016	EBS
Toluene-d8	EPA-8260	97.6	12/05/2016	DLC

U - Analyte analyzed for but not detected at level above reporting limit.



CERTIFICATE OF ANALYSIS

CLIENT:	Terracon 21905 - 64th Ave W, Suite 100 Mountlake Terrace, WA 98043	DATE:	12/6/2016
CLIENT CONTACT:	Mike Noll	ALS JOB#:	EV16120017
CLIENT PROJECT:	81167550	ALS SAMPLE#:	EV16120017-02
CLIENT SAMPLE ID	MW2	DATE RECEIVED:	12/02/2016
		COLLECTION DATE:	12/1/2016 10:15:00 AM
		WDOE ACCREDITATION:	C601

SAMPLE DATA RESULTS

ANALYTE	METHOD	RESULTS	REPORTING LIMITS	DILUTION FACTOR	UNITS	ANALYSIS DATE	ANALYSIS BY
TPH-Volatile Range	NWTPH-GX	820	50	1	UG/L	12/02/2016	PAB
TPH-Diesel Range	NWTPH-DX	190	130	1	UG/L	12/05/2016	EBS
TPH-Oil Range	NWTPH-DX	U	250	1	UG/L	12/05/2016	EBS
Benzene	EPA-8260	46	20	10	UG/L	12/05/2016	DLC
Toluene	EPA-8260	3.1	2.0	1	UG/L	12/05/2016	DLC
Ethylbenzene	EPA-8260	12	2.0	1	UG/L	12/05/2016	DLC
m,p-Xylene	EPA-8260	21	4.0	1	UG/L	12/05/2016	DLC
o-Xylene	EPA-8260	U	2.0	1	UG/L	12/05/2016	DLC

SURROGATE	METHOD	%REC	ANALYSIS DATE	ANALYSIS BY
TFT	NWTPH-GX	157 GS3	12/02/2016	PAB
C25	NWTPH-DX	81.1	12/05/2016	EBS
Toluene-d8	EPA-8260	124 GS1	12/05/2016	DLC
Toluene-d8 10X Dilution	EPA-8260	100	12/05/2016	DLC

U - Analyte analyzed for but not detected at level above reporting limit.
 GS3 - Surrogate outside of control limits due to coeluting compounds.
 GS1 - Surrogate outside of control limits due to matrix effect.
 Chromatogram indicates that it is likely that sample contains weathered gasoline and weathered diesel.
 Diesel range product results biased high due to gasoline range product overlap.

CERTIFICATE OF ANALYSIS

CLIENT:	Terracon 21905 - 64th Ave W, Suite 100 Mountlake Terrace, WA 98043	DATE:	12/6/2016
CLIENT CONTACT:	Mike Noll	ALS JOB#:	EV16120017
CLIENT PROJECT:	81167550	ALS SAMPLE#:	EV16120017-03
CLIENT SAMPLE ID	MW3	DATE RECEIVED:	12/02/2016
		COLLECTION DATE:	12/1/2016 11:11:00 AM
		WDOE ACCREDITATION:	C601

SAMPLE DATA RESULTS

ANALYTE	METHOD	RESULTS	REPORTING LIMITS	DILUTION FACTOR	UNITS	ANALYSIS DATE	ANALYSIS BY
TPH-Volatile Range	NWTPH-GX	U	50	1	UG/L	12/02/2016	PAB
TPH-Diesel Range	NWTPH-DX	U	130	1	UG/L	12/05/2016	EBS
TPH-Oil Range	NWTPH-DX	U	250	1	UG/L	12/05/2016	EBS
Benzene	EPA-8260	U	2.0	1	UG/L	12/05/2016	DLC
Toluene	EPA-8260	U	2.0	1	UG/L	12/05/2016	DLC
Ethylbenzene	EPA-8260	U	2.0	1	UG/L	12/05/2016	DLC
m,p-Xylene	EPA-8260	U	4.0	1	UG/L	12/05/2016	DLC
o-Xylene	EPA-8260	U	2.0	1	UG/L	12/05/2016	DLC

SURROGATE	METHOD	%REC	ANALYSIS DATE	ANALYSIS BY
TFT	NWTPH-GX	88.3	12/02/2016	PAB
C25	NWTPH-DX	107	12/05/2016	EBS
Toluene-d8	EPA-8260	95.9	12/05/2016	DLC

U - Analyte analyzed for but not detected at level above reporting limit.

CERTIFICATE OF ANALYSIS

CLIENT:	Terracon 21905 - 64th Ave W, Suite 100 Mountlake Terrace, WA 98043	DATE:	12/6/2016
CLIENT CONTACT:	Mike Noll	ALS JOB#:	EV16120017
CLIENT PROJECT:	81167550	ALS SAMPLE#:	EV16120017-04
CLIENT SAMPLE ID	MW4	DATE RECEIVED:	12/02/2016
		COLLECTION DATE:	12/1/2016 10:10:00 AM
		WDOE ACCREDITATION:	C601

SAMPLE DATA RESULTS

ANALYTE	METHOD	RESULTS	REPORTING LIMITS	DILUTION FACTOR	UNITS	ANALYSIS DATE	ANALYSIS BY
TPH-Volatile Range	NWTPH-GX	U	50	1	UG/L	12/02/2016	PAB
TPH-Diesel Range	NWTPH-DX	U	130	1	UG/L	12/05/2016	EBS
TPH-Oil Range	NWTPH-DX	U	250	1	UG/L	12/05/2016	EBS
Benzene	EPA-8260	U	2.0	1	UG/L	12/05/2016	DLC
Toluene	EPA-8260	U	2.0	1	UG/L	12/05/2016	DLC
Ethylbenzene	EPA-8260	U	2.0	1	UG/L	12/05/2016	DLC
m,p-Xylene	EPA-8260	U	4.0	1	UG/L	12/05/2016	DLC
o-Xylene	EPA-8260	U	2.0	1	UG/L	12/05/2016	DLC

SURROGATE	METHOD	%REC	ANALYSIS DATE	ANALYSIS BY
TFT	NWTPH-GX	88.5	12/02/2016	PAB
C25	NWTPH-DX	109	12/05/2016	EBS
Toluene-d8	EPA-8260	99.4	12/05/2016	DLC

U - Analyte analyzed for but not detected at level above reporting limit.



CERTIFICATE OF ANALYSIS

CLIENT:	Terracon 21905 - 64th Ave W, Suite 100 Mountlake Terrace, WA 98043	DATE:	12/6/2016
CLIENT CONTACT:	Mike Noll	ALS SDG#:	EV16120017
CLIENT PROJECT:	81167550	WDOE ACCREDITATION:	C601

LABORATORY CONTROL SAMPLE RESULTS

ALS Test Batch ID: 110300 - Water by NWTPH-GX

SPIKED COMPOUND	METHOD	%REC	RPD	QUAL	LIMITS		ANALYSIS DATE	ANALYSIS BY
					MIN	MAX		
TPH-Volatile Range - BS	NWTPH-GX	85.3			66.5	122.7	11/29/2016	PAB
TPH-Volatile Range - BSD	NWTPH-GX	90.6	6		66.5	122.7	11/29/2016	PAB

ALS Test Batch ID: 110385 - Water by NWTPH-DX

SPIKED COMPOUND	METHOD	%REC	RPD	QUAL	LIMITS		ANALYSIS DATE	ANALYSIS BY
					MIN	MAX		
TPH-Diesel Range - BS	NWTPH-DX	89.3			67	125.2	12/01/2016	EBS
TPH-Diesel Range - BSD	NWTPH-DX	99.0	10		67	125.2	12/01/2016	EBS

ALS Test Batch ID: 110456 - Water by EPA-8260

SPIKED COMPOUND	METHOD	%REC	RPD	QUAL	LIMITS		ANALYSIS DATE	ANALYSIS BY
					MIN	MAX		
1,1-Dichloroethene - BS	EPA-8260	101			72.5	136	12/05/2016	DLC
1,1-Dichloroethene - BSD	EPA-8260	93.0	8		72.5	136	12/05/2016	DLC
Benzene - BS	EPA-8260	84.9			74.7	143	12/05/2016	DLC
Benzene - BSD	EPA-8260	84.4	1		74.7	143	12/05/2016	DLC
Toluene - BS	EPA-8260	87.8			71.7	139	12/05/2016	DLC
Toluene - BSD	EPA-8260	85.5	3		71.7	139	12/05/2016	DLC

APPROVED BY

Laboratory Director



ALS Environmental
 8620 Holly Drive, Suite 100
 Everett, WA 98208
 Phone (425) 356-2600
 Fax (425) 356-2626
 http://www.alsglobal.com

Chain Of Custody/ Laboratory Analysis Request

ALS Job# (Laboratory Use Only)

EV16/20017

Date 12-1-16 Page 1 of 1

PROJECT ID: 81167550					ANALYSIS REQUESTED												OTHER (Specify)													
REPORT TO COMPANY: Terracon Consultants Inc. (TCI)					NWTPH-HCID NWTPH-DX NWTPH-GX BTEX by EPA 8021 <input type="checkbox"/> BTEX by EPA 8260 <input checked="" type="checkbox"/> MTBE by EPA 8021 <input type="checkbox"/> MTBE by EPA 8260 <input type="checkbox"/> Halogenated Volatiles by EPA 8260 Volatile Organic Compounds by EPA 8260 EDB / EDC by EPA 8260 SIM (water) EDB / EDC by EPA 8260 (soil) Semivolatile Organic Compounds by EPA 8270 Polycyclic Aromatic Hydrocarbons (PAH) by EPA 8270 SIM PCB by EPA 8082 <input type="checkbox"/> Pesticides by EPA 8081 <input type="checkbox"/> Metals-MTCA-5 <input type="checkbox"/> RCRA-8 <input type="checkbox"/> Pri Pol <input type="checkbox"/> TAL <input type="checkbox"/> Metals Other (Specify) TCLP-Metals <input type="checkbox"/> VOA <input type="checkbox"/> Semi-Vol <input type="checkbox"/> Pest <input type="checkbox"/> Herbs <input type="checkbox"/>																									
PROJECT MANAGER: Mike Noll																														
ADDRESS: 21905 64th Ave West, Suite 100																														
Mantle Terrace, WA, 98043																														
PHONE: 425-501-1476 FAX:																														
P.O. #: E-MAIL: Mike.Noll@Terracon.com																														
INVOICE TO COMPANY: Terracon																														
ATTENTION:																														
ADDRESS:																														
SAMPLE I.D.	DATE	TIME	TYPE	LAB#	NWTPH-HCID	NWTPH-DX	NWTPH-GX	BTEX by EPA 8021	MTBE by EPA 8021	Halogenated Volatiles by EPA 8260	Volatile Organic Compounds by EPA 8260	EDB / EDC by EPA 8260 SIM (water)	EDB / EDC by EPA 8260 (soil)	Semivolatile Organic Compounds by EPA 8270	Polycyclic Aromatic Hydrocarbons (PAH) by EPA 8270 SIM	PCB by EPA 8082	Pesticides by EPA 8081	Metals-MTCA-5	RCRA-8	Pri Pol	TAL	Metals Other (Specify)	TCLP-Metals	VOA	Semi-Vol	Pest	Herbs	NUMBER OF CONTAINERS	RECEIVED IN GOOD CONDITION?	
1. MW1	12-1-16	0900	GW	1		X	X	X																					6	
2. MW2	↓	1015	↓	2		↓	↓	↓																					↓	
3. MW3	↓	1111	↓	3		↓	↓	↓																					↓	
4. MW4	↓	1010	↓	4		↓	↓	↓																					↓	
5.																														
6.																														
7.																														
8.																														
9.																														
10.																														

SPECIAL INSTRUCTIONS

SIGNATURES (Name, Company, Date, Time):

1. Relinquished By: Kyle Bennett, TCI, 12-2-16, 1145
 Received By: Michael Siple / Terracon / 12-2-2016 / 1145

2. Relinquished By: Michael Siple / Terracon / 12-2-2016 / 1510
 Received By: ALS 12/2/16 1510

TURNAROUND REQUESTED in Business Days*

Organic, Metals & Inorganic Analysis

10 Standard 5 3 2 1 SAME DAY

Fuels & Hydrocarbon Analysis

3 1 SAME DAY

OTHER:

Specify: _____

*Turnaround request less than standard may incur Rush Charges