

South Park Landfill—Cleanup Documents and Consent Decree



8100-8200 2nd Ave S, Seattle

CONTACTS & INFORMATION

**October 30 —
December 13, 2017**

Submit comments to:

Jerome Cruz, Site Manager
3190 160th Ave SE
Bellevue WA 98008
Jerome.Cruz@ecy.wa.gov

Online form: [http://
cs.ecology.commentinput.com/?
id=dYmJK](http://cs.ecology.commentinput.com/?id=dYmJK)

Questions? 425-649-7094

Public Meeting

November 28, 6:30 pm

**South Park
Neighborhood Center**

**8201 10th Ave S
Seattle, WA 98108**

We will hold a formal *public hearing* (for transcription of verbal comments) if 10 or more people request it. For more information, contact:
Amy White, 425-649-7052 or
Amelia.White@ecy.wa.gov

**Facility Site ID #: 2180
Cleanup Site ID #: 1324**

Public comment invited

Ecology invites your input on the following documents related to the investigation and cleanup of the South Park Landfill Site:

- **Draft Remedial Investigation and Feasibility Study (RI/FS) Report**—describes contamination found on the Site and what cleanup methods were considered.
- **Draft Cleanup Action Plan**—describes cleanup methods selected.
- **Revised Public Participation Plan**—describes how the public can stay informed and give input on activities at this Site in the future.
- **Draft Consent Decree**—legal agreement requiring certain Potentially Liable Persons (PLPs) to complete cleanup on a portion of the Site.

The Consent Decree is a final settlement of liability (legal responsibility) for contamination on a portion of the Site, called the Settlement Area. It does not settle liability for the whole Site, which extends beyond the Settlement Area. The PLPs for this agreement are City of Seattle, King County, and South Park Property Development, LLC (SPPD). Cleanup of other portions of the Site will be done separately in the future.

A State Environmental Policy Act (SEPA) Checklist and Determination will also be made available for public comment separately.

What is happening now?

The Cleanup Action Plan includes the Interim Actions (partial cleanups) already done at the two largest parcels on the landfill, owned by SPPD and City of Seattle. It also requires the PLPs to maintain the existing landfill cap, landfill gas controls, stormwater controls, and systems for groundwater and landfill gas monitoring.

For closed solid waste landfills, the standard cleanup remedy under state law is to contain the waste under a surface cap or cover. The landfill cap requirements in this case do not require removal of the large, established trees on the City's portion of the Site. Landscaping must be maintained around these trees, to prevent people from contacting landfill waste.



Review the documents:

<https://fortress.wa.gov/ecy/gsp/Sitepage.aspx?csid=1324>

Ecology NW Regional Office

3190 160th Avenue SE
Bellevue, WA 98008
425-649-7190

Please call for appointment.

Seattle Public Library, South Park Branch

8604 Eighth Avenue S
Seattle, WA 98108
206-615-1688

Sign up for our email listserv to receive regular updates!

<https://listserv.wa.gov/cgi-bin/wa?SUBED1=DUWAMISH-RIVER-UPDATES&A=1>

Special accommodations:

To request ADA accommodation for disabilities, or printed materials in a format for the visually impaired, call Ecology at 360-407-7668 or visit <http://www.ecy.wa.gov/accessibility.html>.

Persons with impaired hearing may call Washington Relay Service at 711.

Persons with speech disability may call TTY at 877-833-6341.

Landfills go through a fairly standard decomposition process, and the South Park Landfill is in an advanced stage. Currently we know that:

- Methane is not collecting in buildings/structures on the landfill.
- Solvents, such as trichloroethylene and vinyl chloride, are present at low levels in groundwater at the northeast corner of the Site. They are gradually being broken down naturally into nontoxic compounds.
- Iron, manganese, and arsenic metals are in groundwater, but are expected to decrease below cleanup levels within 10 years, as the landfill ages.

Site history

The South Park Landfill was used for disposal and burning of municipal, commercial, and industrial refuse from the 1930s to 1966, when the landfill was closed under existing laws. In the 1950s-1970s, part of the Site was also used as an auto wrecking yard.

By 1970, the City of Seattle's South Recycling and Disposal Station, Kenyon Industrial Park, and other industrial facilities had been built on top of the landfill. SPPD purchased its parcel from King County in 2006.

Investigations of the Site began in the late 1980s. Ecology entered into a legal agreement (Agreed Order) with the City of Seattle and SPPD in 2009, to investigate and evaluate cleanup options. The Agreed Order was amended in 2013 and 2015 to carry out Interim Actions (partial cleanups).

Why this cleanup matters

The landfill and its associated contamination (including methane) could pose risks to human health and the environment in surrounding areas. This Site is also part of Ecology's Lower Duwamish Waterway (LDW) source control efforts, because it is located near the LDW Superfund Site.

The US Environmental Protection Agency (EPA) put the lower 5 miles of the Duwamish River on its Superfund National Priorities List in 2001. EPA leads cleanup of the river sediments. The sediments contain a wide range of contaminants due to decades of industrial activity and urban runoff.

Ecology is leading efforts to control sources of contamination from the land area surrounding the LDW. The long-term goal is to reduce recontamination of the sediments and restore water quality in the river.

What happens next?

Ecology will consider and respond to comments received, and may change the documents based on your comments. Once the Consent Decree is signed, it will be filed in court. Then the cleanup will be carried out according to the Cleanup Action Plan.

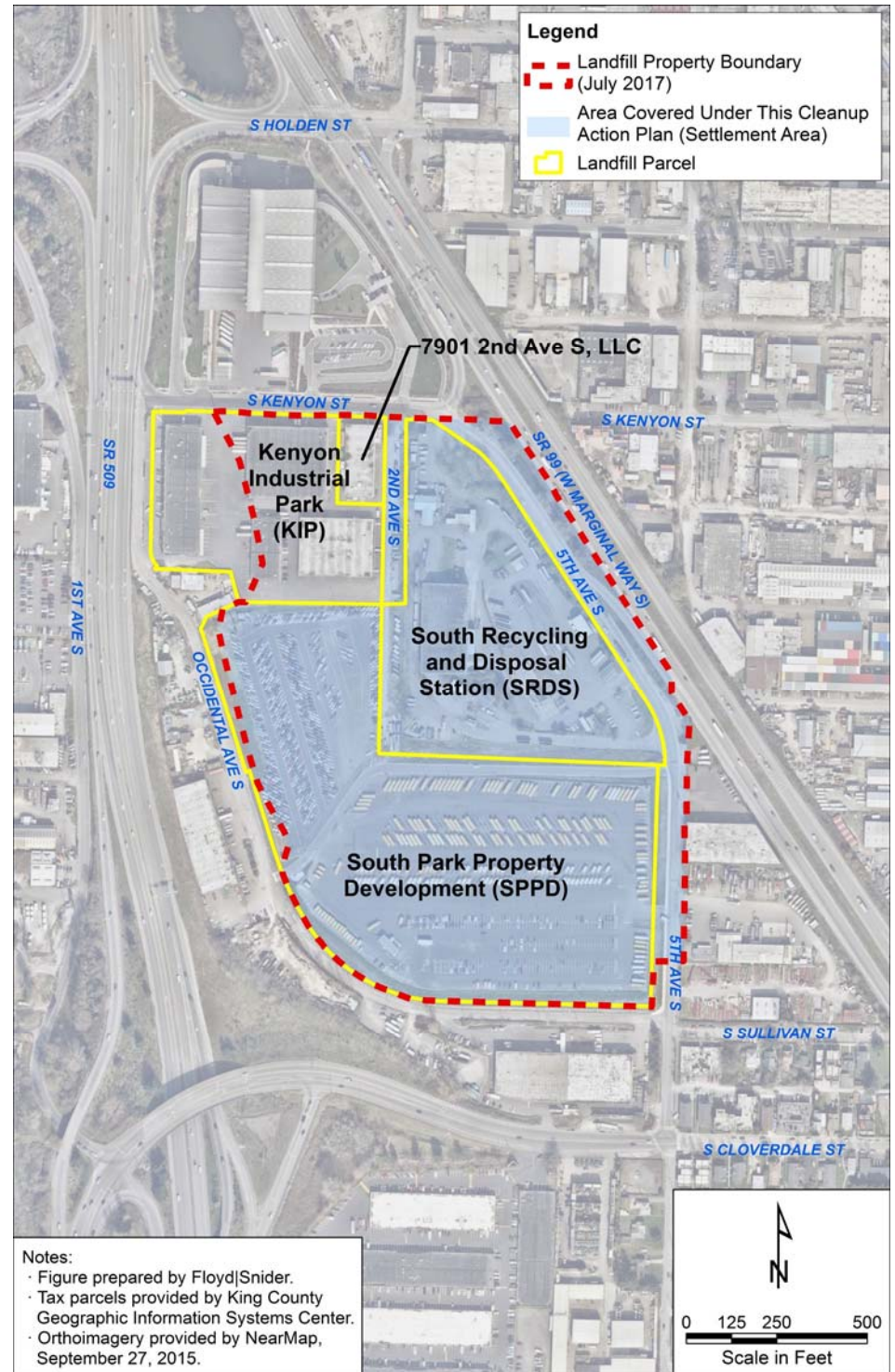
Groundwater monitoring will continue for at least 10 years, depending on results. Landfill gas monitoring and maintenance of the landfill cap and stormwater controls will continue indefinitely. Ecology will do periodic reviews every five years to confirm the cleanup remedy is working and human health and the environment are protected.



Key Features of the Cleanup Action Plan:

- **Landfill cap**—a cover to protect people and animals from direct contact with the landfill contents.
- **Landfill gas controls**—systems that prevent movement of landfill gas into buildings/structures on or near the Site.
- **Stormwater controls**—systems that:
 1. Prevent stormwater from coming into contact with solid waste.
 2. Meet stormwater regulations.
- **Groundwater monitoring plan**—regular sampling to make sure that levels of contamination in groundwater remain low and continue to decrease.
- **Long-term monitoring and maintenance plan for the landfill cap, landfill gas controls, and stormwater controls**— inspections and maintenance to make sure the cleanup remedy continues to protect human health and the environment.
- **Institutional controls**—restrictions on the title of the property, limiting land use and activities that could interfere with the cleanup remedy.
- **Contingency plans** that specify actions to be taken if methane or groundwater contamination levels rise.

Figure 1. Map of South Park Landfill Site



3190 160th Avenue SE
Bellevue WA 98008-5452

Comment Invited—South Park Landfill



Public Comment Period:
October 30—December 13, 2017

Public Meeting: November 28, 6:30pm

Información en español incluida adentro.

El Departamento de Ecología esta anunciando el periodo de comentario publico referente a la limpieza ambiental del sitio de South Park Landfill.

Bộ Môi Sinh thông báo đến công chúng về khung thời gian góp ý cho công tác làm sạch môi trường khu vực South Park Landfill. Nếu quý vị muốn nhận tài liệu này bằng tiếng Việt hoặc cần thêm thông tin, xin liên hệ ông Liêm Nguyễn 360-407-6955, điện thư:

Lngu461@ecy.wa.gov hoặc vào trang mạng <https://fortress.wa.gov/ecy/gsp/Sitepage.aspx?csid=1324>

To contact the Community Advisory Group for the Lower Duwamish Superfund Site,
call Duwamish River Cleanup Coalition/Technical Advisory Group at (206) 954-0218,
email contact@duwamishcleanup.org, or visit <http://duwamishcleanup.org/>