

# Groundwater Monitoring Report

Safeway #1436 Fueling Station/Former My Uncle's Store  
7201 Portland Avenue  
Tacoma, Washington

December 18, 2017  
Terracon Project No. 81167550

**Prepared for:**  
Safeway, Inc.  
Tacoma, Washington

**Prepared by:**  
Terracon Consultants, Inc.  
Mountlake Terrace, Washington

[terracon.com](http://terracon.com)

**Terracon**

Environmental   ■   Facilities   ■   Geotechnical   ■   Materials

December 18, 2017



Safeway, Inc.  
250 Parkcenter Blvd  
PO Box 20  
Boise, Idaho 83726

Attn: Mr. Robert DeNinno  
P: 208.395.4790  
E: Robert.deninno@albertsons.com

Re: **Groundwater Monitoring Report**  
Safeway #1436 Fueling Station/Former My Uncle's Store  
7201 Portland Avenue  
Tacoma, Pierce County, Washington 98404  
TPCHD UST Permit #0000648  
Terracon Project No: 81167550

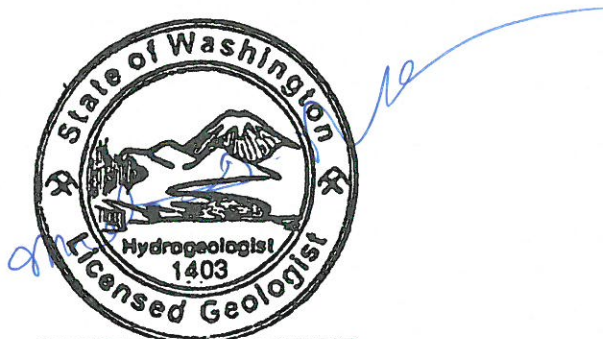
Dear Mr. DeNinno:

Terracon Consultants, Inc. (Terracon) is pleased to submit our report of groundwater monitoring activities completed at the site referenced above (the Site) during September 2017. The report presents data from recent field activities that included the collection of groundwater samples for chemical analysis. The activities were completed to further assess groundwater quality at the Site. Terracon conducted the investigation in general accordance with our Proposal dated October 24, 2016, *Work Plan for Groundwater Monitoring Well Installations and Quarterly Monitoring* dated November 2, 2016 (Terracon Project No. 81167550), and Project Services Agreement dated October 27, 2016.

Terracon appreciates this opportunity to provide environmental services to Safeway, Inc. Should you have any questions or require additional information, please do not hesitate to contact our office.

Sincerely,  
**Terracon Consultants, Inc.**

Peter Snider  
Staff Industrial Hygienist



MICHAEL D. NOLL

*Michael D. Noll*  
Michael D. Noll, Lg., L.Hg.  
Senior Project Manager

Terracon Consultants, Inc. 21905 64th Avenue West Suite 100 Mountlake Terrace, Washington 98043  
P (425) 771 3304 F (425) 771 3549 terracon.com

TABLE OF CONTENTS



1.0 SITE DESCRIPTION.....1  
2.0 SCOPE OF SERVICES.....3  
    2.1 Standard of Care.....4  
    2.2 Additional Scope Limitations .....4  
    2.3 Reliance.....4  
3.0 FIELD INVESTIGATION .....5  
    3.1 Groundwater Sampling .....5  
4.0 ANALYTICAL RESULTS.....6  
    4.1 Groundwater Analytical Results .....6  
    4.2 Quality Assurance/Quality Control Results.....6  
6.0 FINDINGS AND CONCLUSIONS .....7  
7.0 RECOMMENDATIONS .....8

**APPENDIX A – EXHIBITS**

- Exhibit 1 – Topographic Map
- Exhibit 2 – Site Diagram
- Exhibit 3 – Groundwater Contour & Flow Map – September 2017
- Exhibit 4 – Groundwater Sample Concentrations

**APPENDIX B – TABLES**

- Table 1 – Summary of Groundwater Analytical Results

**APPENDIX C – ANALYTICAL REPORT AND CHAIN OF CUSTODY FORM**

**Groundwater Monitoring Report**  
**SAFEWAY #1436 FUELING STATION/Former My Uncle's Store**  
**7201 Portland Avenue**  
**TACOMA, WASHINGTON**

**Terracon Project No.81167550**  
**December 18, 2017**

## **1.0 SITE DESCRIPTION**

The Safeway store property is an approximately 4.43-acre tract of land (Pierce County tax parcel 0320274090) located on the southeast corner of Portland Avenue and East 72<sup>nd</sup> Street in Tacoma, Washington. The northwest portion of the property parcel (the Site) was developed as a gasoline station about 1953 and operated until the 1970s. A Chevron-branded gasoline station/convenience store (My Uncle's Store) was constructed on the Site in the late 1970s and operated until 2001, when the underground storage tanks (USTs) were removed. According to Washington State Department of Ecology (Ecology) online records, the former Chevron facility was most recently equipped with three 10,000-gallon single-walled steel USTs that were installed in 1982 and upgraded in 1997. A Safeway fueling station was constructed on the Site in 2002. The Safeway fueling station consists of two 20,000-gallon jacketed steel USTs. Double-walled fiberglass piping supplies fuel to dispensers located on seven dispenser islands, which are covered with a canopy.

The Site location is depicted on Exhibit 1 in Appendix A, a portion of the 1994 Tacoma South USGS Topographic map. The Site layout is shown on Exhibit 2 in Appendix A, including the locations of current Site structures, former USTs and dispensers, approximate extents of the former UST removal and remedial excavation, and the current groundwater monitoring wells.

Environmental Partners, Inc. (EPI) advanced four soil borings at the Site (TB-1 through TB-4) to depths ranging from 21.5 to 36.5 feet below the ground surface (bgs) in October 2000. EPI reported that groundwater was not encountered in the borings to the maximum depth explored (36.5 feet bgs). Soil samples collected from three of the borings at depths ranging from 1.5 to 5 feet bgs contained gasoline-range total petroleum hydrocarbons (TPH) and benzene at concentrations exceeding the Washington State Model Toxics Control Act (MTCA) Method A cleanup levels.

The My Uncle's Store USTs, dispensers, and product piping were excavated and removed in December 2001. Soil with gasoline-range TPH and benzene exceeding MTCA Method A cleanup levels and the presence of water with a petroleum sheen in the UST removal excavation were documented during the UST system removal work, and a confirmed release of petroleum hydrocarbons was reported to Ecology by EPI on December 14, 2001.

## Groundwater Monitoring Report

Safeway #1436 Fueling Station ■ Tacoma, WA

December 18, 2017 ■ Terracon Project No. 81167550



Petroleum-contaminated soil (PCS) was excavated and removed from the northwestern portion of the former My Uncle's Store UST system area in January 2002. EPI collected 210 soil samples from the excavation for laboratory analysis, including 68 samples from the excavation bottom and 142 samples from the excavation sidewalls. The final soil excavation measured approximately 96 feet by 115 feet, and 13 feet deep. Approximately 5,100 tons of PCS were removed from the excavation for offsite disposal. Approximately 54,000 gallons of hydrocarbon-impacted water with some petroleum sheen were also removed from the excavation, treated, and disposed in the City of Tacoma sanitary sewer system. According to EPI, very little groundwater entered the excavation; the majority of the water removed from the excavation was from surface runoff and rainwater.

Soil samples collected from the final northern and western extents of the excavation at depths ranging from 3 to 13 feet bgs contained gasoline-range TPH concentrations ranging from 53 to 6,500 milligrams per kilogram (mg/kg) and/or benzene concentrations ranging from 0.08 to 99 mg/kg, which exceed the MTCA Method A cleanup levels of 30 mg/kg (when benzene is present) and 0.03 mg/kg, respectively. Soil samples collected from the final extent of the southern and eastern excavation sidewalls and from the excavation bottom reportedly did not contain contaminants exceeding the MTCA Method A cleanup levels.

In November 2016, Terracon advanced four soil borings (MW1 through MW4) along the western and northern property boundaries in order to address a request from the Tacoma-Pierce County Health Department (TPCHD) for additional Site characterization data. The borings were advanced to approximately 20 feet bgs and completed as 2-inch diameter polyvinyl chloride (PVC) groundwater monitoring wells. Fill soil was encountered in the borings to depths of approximately 10 feet bgs, underlain by glacial deposits to the bottom of the borings. Measured depth to groundwater in the wells ranged from approximately 5 to 6 feet bgs, with a horizontal groundwater gradient toward the west and southwest.

Soil and groundwater samples collected from the borings/wells were analyzed for gasoline-, diesel-, and oil-range TPH, and for benzene, toluene, ethylbenzene, and total xylenes (BTEX). A subsurface soil sample collected at approximately 6.5 feet bgs from boring MW2 (located in the northwest corner of the Site) had a concentration of benzene detected at 0.3 mg/kg, which exceeds the MTCA Method A cleanup level of 0.03 mg/kg. The remaining soil sample results were either below the laboratory method reporting limits (MRLs) or below the MTCA Method A cleanup levels. The groundwater sample collected from monitoring well MW2 contained gasoline-range TPH and benzene at concentrations of 820 micrograms per liter ( $\mu\text{g/l}$ ) and 46  $\mu\text{g/l}$ , respectively, which exceed the MTCA Method A cleanup levels of 800  $\mu\text{g/l}$  and 5  $\mu\text{g/l}$ , respectively. The remaining groundwater sample results were below the laboratory MRLs.

Groundwater monitoring wells MW1 through MW4 were sampled in March 2017. Measured depth to groundwater in the wells ranged from approximately 4 to 4.5 feet bgs, with a horizontal

## Groundwater Monitoring Report

Safeway #1436 Fueling Station ■ Tacoma, WA

December 18, 2017 ■ Terracon Project No. 81167550



groundwater gradient toward the west. Groundwater samples were analyzed for gasoline-, diesel-, and oil-range TPH, and for BTEX. The groundwater sample collected from well MW2, where gasoline-range TPH was previously detected in November 2016, was additionally analyzed for volatile organic compounds (VOCs) gasoline oxygenates and additives, including ethanol, methyl tert butyl ether (MTBE), diisopropyl ether, ethyl t-butyl ether, tert-amyl methyl ether (TAME), and tert-butanol. The groundwater sample collected from monitoring well MW2 contained gasoline-range TPH and benzene at concentrations of 970 µg/l and 18 µg/l, respectively, which exceed the MTCA Method a cleanup levels. Results for gasoline oxygenates and additives were below the laboratory MRLs. Other VOCs were detected in the MW2 sample, including isopropylbenzene, n-propylbenzene, 1,3,5-trimethylbenzene, 1,2,4-trimethylbenzene, S-butylbenzene, N-butylbenzene, and naphthalene, but at concentrations well below their respective MTCA Method A cleanup levels or MTCA Method B cleanup levels (for chemicals where a MTCA Method A cleanup level has not been established). The remaining groundwater sample results were below the laboratory MRLs.

Groundwater monitoring wells MW1 through MW4 were sampled in June 2017. Measured depth to groundwater in the wells ranged from approximately 5 to 6 feet bgs, with a horizontal groundwater gradient toward the southwest. Groundwater samples were analyzed for gasoline-, diesel-, and oil-range TPH, and for VOCs. The groundwater sample collected from monitoring well MW2 contained benzene at a concentration of 6.7 µg/l, which exceeds the MTCA Method A cleanup level. The remaining groundwater sample results were either below the laboratory MRLs or below the MTCA Method A or MTCA Method B cleanup levels.

## 2.0 SCOPE OF SERVICES

Terracon's scope of work was conducted in general accordance with our proposal, dated October 24, 2016; *Work Plan for Groundwater Monitoring Well Installations and Quarterly Monitoring*, dated November 2, 2016; and Project Services Agreement, dated October 27, 2016. Our scope of services included completion of the following tasks:

- Collect groundwater samples from each of the onsite groundwater monitoring wells (MW1 through MW4);
- Complete laboratory analyses of groundwater samples; and
- Prepare this Groundwater Monitoring summary report.

The objective of the groundwater monitoring was to further assess groundwater conditions at the current fueling station. The investigation is in response to TPCHD's request to provide additional

## Groundwater Monitoring Report

Safeway #1436 Fueling Station ■ Tacoma, WA

December 18, 2017 ■ Terracon Project No. 81167550



Site characterization data near a former UST removal excavation completed prior to the construction of the current fueling station.

### **2.1 Standard of Care**

Terracon's services were performed in a manner consistent with generally accepted practices of the profession undertaken in similar studies in the same geographical area during the same time. Terracon makes no warranties, either express or implied, regarding the findings, conclusions, or recommendations. Please note that Terracon does not warrant the work of laboratories, regulatory agencies, or other third parties supplying information used in the preparation of the report. These services were performed in accordance with the scope of work agreed with you, our client, as reflected in our proposal and work plan.

### **2.2 Additional Scope Limitations**

Findings, conclusions, and recommendations resulting from these services are based upon information derived from the on-site activities and other services performed under this scope of work; such information is subject to change over time. Certain indicators of the presence of hazardous substances, petroleum products, or other constituents may have been latent, inaccessible, unobservable, non-detectable, or not present during these services. We cannot represent that the Site contains no hazardous substances, toxic materials, petroleum products, or other latent conditions beyond those identified during this investigation. Subsurface conditions may vary from those encountered at specific borings or wells or during other surveys, tests, assessments, investigations, or exploratory services. The data, interpretations, findings, and our recommendations are based solely upon data obtained at the time and within the scope of these services.

### **2.3 Reliance**

This report has been prepared for the exclusive use of Safeway, Inc., and any authorization for use or reliance by any other party (except for a governmental entity having jurisdiction over the Site) is prohibited without the express written authorization of Safeway, Inc. and Terracon. Any unauthorized distribution or reuse is at Safeway, Inc.'s sole risk. Notwithstanding the foregoing, reliance by authorized parties will be subject to the terms, conditions, and limitations stated in the proposal, report, and Terracon's Agreement for Services. The limitation of liability defined in the terms and conditions is the aggregate limit of Terracon's liability to Safeway, Inc. and all relying parties unless otherwise agreed in writing.

## **3.0 FIELD INVESTIGATION**

Terracon has a commitment to the safety of all its employees. As such, and in accordance with our *Incident and Injury Free*® safety goals, Terracon conducted the fieldwork under a site-specific health and safety plan developed for this project. Work was performed using the Occupational Health and Safety Administration (OSHA) Level D work attire consisting of hard hats, safety glasses, protective gloves, and protective boots. In an effort to locate underground utilities in the work area, Terracon contacted the Washington State Utility Notification Center to arrange for public underground utility clearance at the Site. In addition, a private utility location service was subcontracted by Terracon to identify the locations and depths of the various utilities located near the proposed borings.

### **3.1 Groundwater Sampling**

On September 27, 2017, Terracon representative Peter Snider mobilized to the Site to perform groundwater monitoring activities and to collect groundwater samples from wells MW1 through MW4.

Prior to sample collection, the monitoring wells were opened and exposed to surficial atmospheric conditions, and static depth to groundwater below the top of the well casing (TOC) was measured in each well. The water level probe was decontaminated using a non-phosphate soap wash and distilled water rinse before use in each well.

Measured depth to water in the wells ranged from 4.88 feet below TOC at MW2 to 7.99 feet below TOC at MW4. Based on depth to water measurements and well TOC survey data, the groundwater elevations at the monitoring wells ranged from 410.61 feet at monitoring MW1 to 412.74 feet at monitoring well MW2 (see Table 1 in Appendix B). Based on groundwater level measurements collected during Terracon's groundwater sampling event, the groundwater flow direction at the Site is generally toward the southwest at a horizontal gradient of approximately 0.03 to 0.06 feet per foot (ft/ft; see Exhibit 3 Groundwater Contour and Flow Map in Appendix A).

The groundwater samples were collected using a peristaltic pump and dedicated tubing. Prior to sample collection, each well was purged at a low flow rate (less than 500 milliliters per minute [mL/min]). During the purging process, groundwater quality parameters, including temperature, electrical conductivity (EC), pH, turbidity, dissolved oxygen (DO), and oxidation-reduction potential (ORP), were measured at regular intervals using a Horiba U-22 or equivalent water quality meter. Purging was considered complete when three consecutive readings for EC, pH, turbidity, DO, and ORP were observed within 10% of one-another.

Samples were collected using the peristaltic pump. The same low flow rate used for purging the wells was used for collecting the samples. The discharge from the peristaltic pump was directed

## Groundwater Monitoring Report

Safeway #1436 Fueling Station ■ Tacoma, WA

December 18, 2017 ■ Terracon Project No. 81167550



into laboratory-supplied glassware. The sample containers were labeled with the project number, date, time, well number, and sample number and placed in a chilled cooler immediately after sampling. The sample containers were subsequently transported to ALS Laboratory Group (ALS), a Washington-certified analytical laboratory, under strict chain-of-custody procedures.

## 4.0 ANALYTICAL RESULTS

The groundwater samples were analyzed for gasoline-, diesel-, and oil-range TPH by Northwest Methods NWTPH-Gx and NWTPH-Dx and BTEX by EPA Method 8260.

Reported groundwater concentrations were compared with the MTCA Method A cleanup levels for unrestricted land use, as applicable, established under Chapter 70.105D Revised Code of Washington (RCW) and its implementing regulation, MTCA Chapter 173-340 Washington Administrative Code (WAC).

The laboratory analytical report and chain-of-custody record are attached in Appendix C. The following sections describe the results of the testing.

### 4.1 Groundwater Analytical Results

#### Gasoline-, Diesel- and Oil-Range TPH

Gasoline-, diesel-, and oil-range TPH were not reported at concentrations above the laboratory MRLs in the groundwater sample collected from the on-site groundwater monitoring wells.

#### Volatile Organic Compounds: Benzene, Toluene, Ethylbenzene, and Total Xylenes

BTEX was not reported at concentrations above the laboratory MRLs in the groundwater samples collected from the on-site groundwater monitoring wells.

The groundwater analytical results are summarized in Table 1 of Appendix B.

### 4.2 Quality Assurance/Quality Control Results

The analytical results for the current investigation were checked for completeness upon receipt from the laboratory to ensure that data and quality assurance and quality control (QA/QC) information requested were present. Data quality was assessed by considering hold times, surrogate recovery, method blanks, matrix spike and matrix spike duplicate (MS/MSD) recovery, and detection limits. QA/QC review was completed using guidance described in *USEPA Contract Laboratory Program National Functional Guidelines for Superfund Organic Methods Data Review* (Draft Final, USEPA, 2005). Our evaluation assumes that the QA/QC is correct as reported by the laboratory, and merely provides an interpretation of the QA/QC results.

## Groundwater Monitoring Report

Safeway #1436 Fueling Station ■ Tacoma, WA  
December 18, 2017 ■ Terracon Project No. 81167550



Hold Times. All analyses were completed within specified hold times.

Surrogate Recoveries. All surrogate recoveries were within laboratory limits.

Method Blanks. Analytes were not detected in any of the laboratory method blanks.

MS/MSD Results. MS and MSD recoveries were all within laboratory limits, and Relative Percent Differences (RPDs) between MS and MSD recoveries were all within laboratory limits.

Laboratory Reporting Limits. Reporting limits were below relevant MTCA cleanup levels.

Based upon our interpretation of quality control information provided by the laboratories, it is our opinion that the overall dataset is useable as qualified for the purposes of this investigation.

## 5.0 INVESTIGATION DERIVED WASTES

Investigation derived wastes (IDW) generated during the groundwater monitoring activities, which consisted of equipment decontamination water and well purge water, were containerized in one Department of Transportation (DOT) approved 55-gallon drum, properly labeled, and temporarily staged onsite, pending receipt of laboratory analytical results. The IDW drum was staged on the east side of the grocery store building near the loading dock.

## 6.0 FINDINGS AND CONCLUSIONS

Based on the scope of services described in this report, and subject to the limitations described herein, Terracon concludes the following:

Groundwater monitoring wells MW1 through MW4 were sampled in September 2017. Measured depth to groundwater in the wells ranged from approximately 5 to 8 feet bgs, with a horizontal groundwater gradient toward the southwest.

Groundwater samples collected from the wells were analyzed for gasoline-, diesel-, and oil-range TPH, and BTEX.

The groundwater samples collected from monitoring wells MW1 through MW4 did not contain the contaminants of concern above their respective laboratory MRLs.

Based on the groundwater sample results, it appears that the historical remnant gasoline-range impacts at the northwest corner of the Site, in the area of MW2, have continued to decrease over time, and are currently in compliance with MTCA regulatory cleanup levels.

## Groundwater Monitoring Report

Safeway #1436 Fueling Station ■ Tacoma, WA

December 18, 2017 ■ Terracon Project No. 81167550



## 7.0 RECOMMENDATIONS

Concentrations of remnant gasoline-related contaminants have continued to decrease over time, and were not detected in the Site wells in September 2017. The Site does not appear to represent a risk to human health or the environment.

Terracon recommends that a copy of this Groundwater Monitoring Report be submitted to the TPCHD for review and comment, and that a meeting or call with TPCHD be requested to discuss the need for any further action at the Site. Terracon also recommends that a copy of the report be submitted to the Ecology Southwest Regional Office.

**APPENDIX A - EXHIBITS**

Exhibit 1 - Topographic Map

Exhibit 2 - Site Diagram

Exhibit 3 – Groundwater Contour & Flow Map – September 2017

Exhibit 4 – Groundwater Sample Concentrations

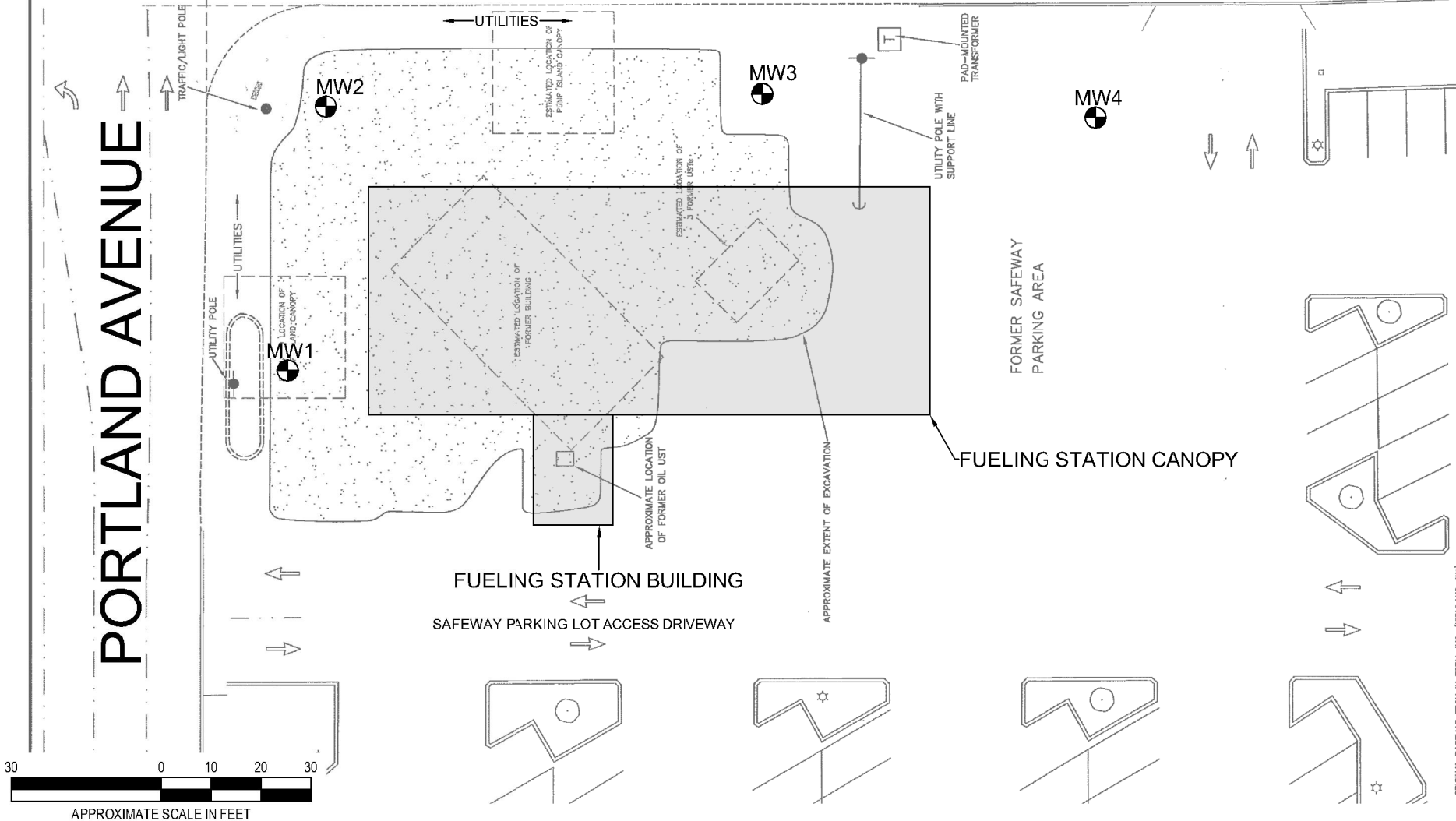


**PORTLAND AVENUE**

**72ND STREET**



ENVIRONMENTAL PROJECT 08258.2



ORIGINAL BASEMAP FROM IN FORM, INC. (ORCLAND, WA)

KEY

**LEGEND**

MW1 APPROXIMATE LOCATION OF MONITORING WELL

|              |     |             |               |
|--------------|-----|-------------|---------------|
| Project Mgr: | MDN | Project No: | 81167550      |
| Drawn By:    | AMP | Scale:      | AS SHOWN      |
| Checked By:  | MDN | File No:    | Exhibit 2     |
| Approved By: | MDN | Date:       | December 2016 |



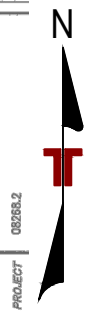
21905 64th Avenue W, Ste 100 Mountlake Terrace, WA 98043  
 PH. (425) 771-3304 FAX. (425) 771-3549

**SITE DIAGRAM**

Safeway #1436 Fueling Station  
 7201 Portland Ave E  
 Tacoma, Pierce County, Washington

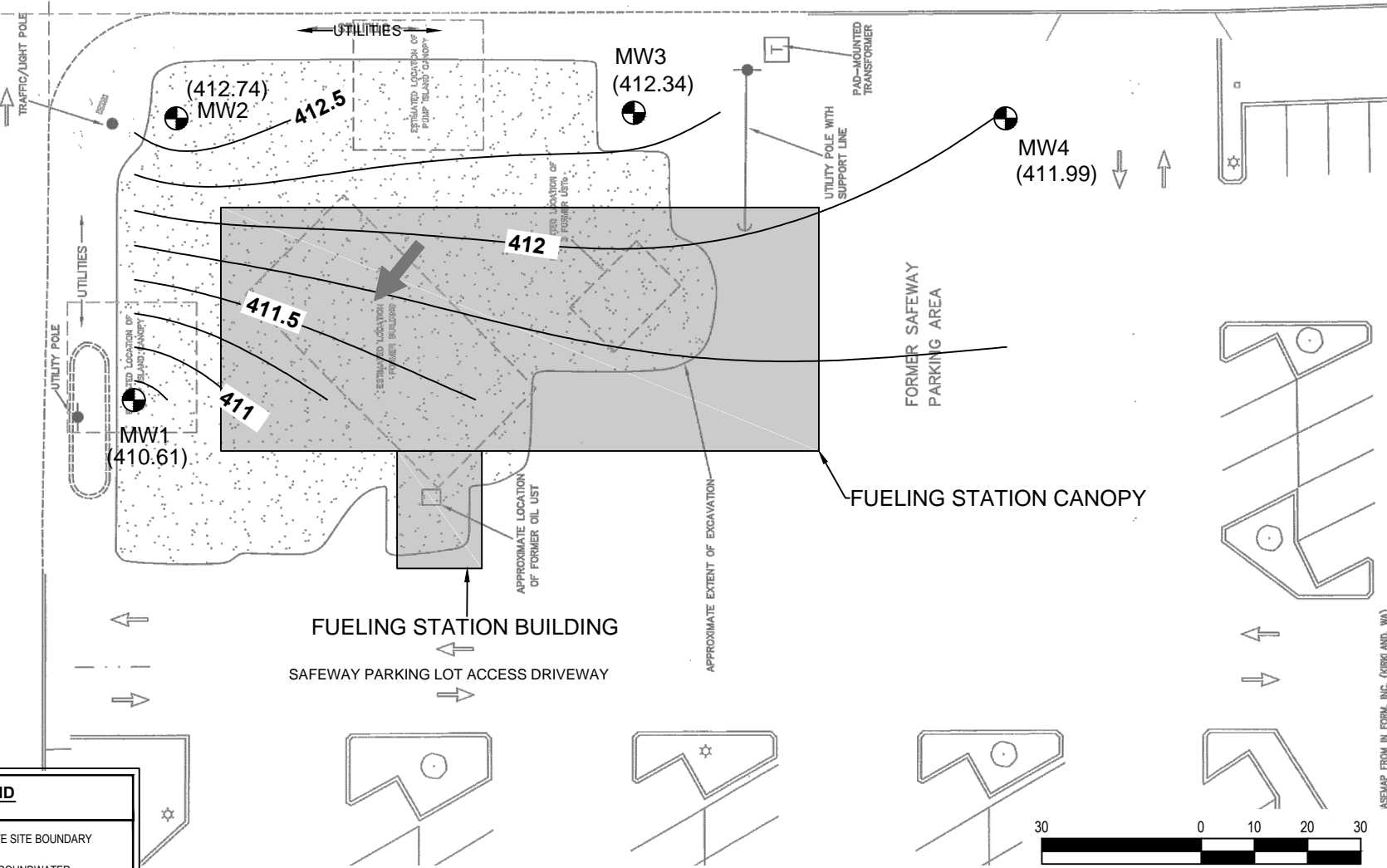
**EXHIBIT**

2



72ND STREET

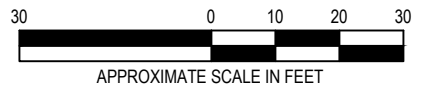
PORTLAND AVENUE



ENVIRONMENTAL PROJECT 08268.2  
ASEMAP FROM IN FORM, INC. (KIRKLAND, WA)

**LEGEND**

- APPROXIMATE SITE BOUNDARY
- INFERRED GROUNDWATER FLOW DIRECTION
- MW1 (400) APPROXIMATE LOCATION AND NUMBER OF PERMANENT GROUNDWATER MONITORING WELL, GROUNDWATER ELEVATION (FEET)
- 400 GROUNDWATER CONTOUR ELEVATION (FEET)



|               |     |
|---------------|-----|
| Project Mngr: | MDN |
| Drawn By:     | HRG |
| Checked By:   | MDN |
| Approved By:  | MDN |

|             |              |
|-------------|--------------|
| Project No. | 81167550     |
| Scale:      | AS SHOWN     |
| File No.    | Exhibit 3    |
| Date:       | October 2017 |

**Terracon**  
Consulting Engineers and Scientists

21905 64th Avenue W., Ste 100 Mountlake Terrace, WA 98043  
PH. (425) 771-3304 FAX. (425) 771-3549

**GROUNDWATER CONTOUR & FLOW MAP-SEPTEMBER 2017**

Safeway #1436 Fueling Station  
7201 Portland Ave E  
Tacoma, Pierce County, Washington

**EXHIBIT**

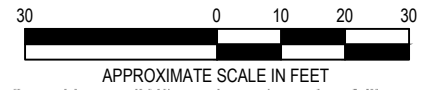
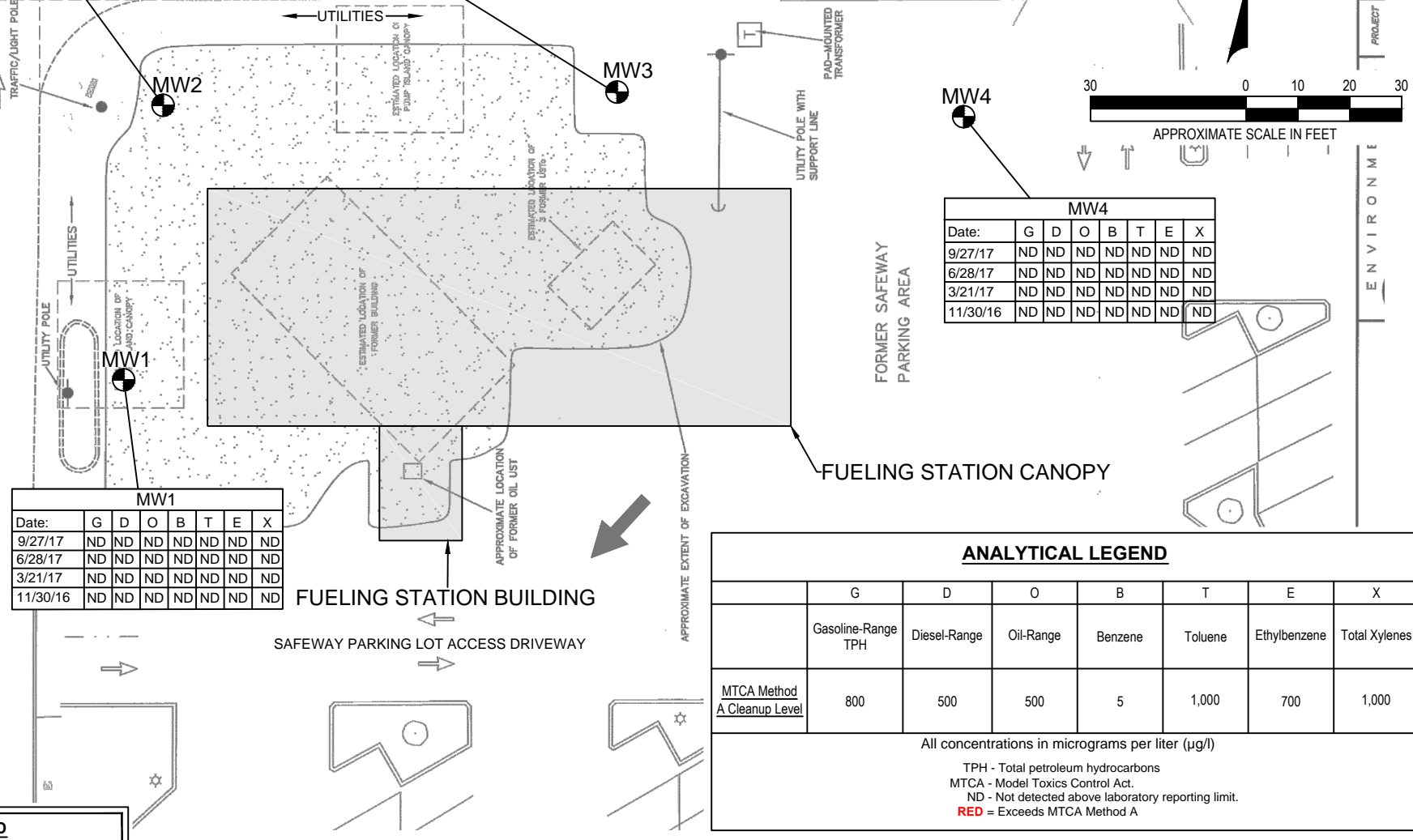
3

| MW2      |     |     |    |     |     |    |    |
|----------|-----|-----|----|-----|-----|----|----|
| Date:    | G   | D   | O  | B   | T   | E  | X  |
| 9/27/17  | ND  | ND  | ND | ND  | ND  | ND | ND |
| 6/28/17  | 670 | ND  | ND | 6.7 | ND  | ND | ND |
| 3/21/17  | 970 | 290 | ND | 18  | ND  | 25 | 26 |
| 11/30/16 | 820 | 190 | ND | 46  | 3.1 | 12 | 21 |

| MW3      |    |    |    |    |    |    |    |
|----------|----|----|----|----|----|----|----|
| Date:    | G  | D  | O  | B  | T  | E  | X  |
| 9/27/17  | ND | ND | ND | ND | ND | ND | ND |
| 6/28/17  | ND | ND | ND | ND | ND | ND | ND |
| 3/21/17  | ND | ND | ND | ND | ND | ND | ND |
| 11/30/16 | ND | ND | ND | ND | ND | ND | ND |

72ND STREET

PORTLAND AVENUE



| MW4      |    |    |    |    |    |    |    |
|----------|----|----|----|----|----|----|----|
| Date:    | G  | D  | O  | B  | T  | E  | X  |
| 9/27/17  | ND | ND | ND | ND | ND | ND | ND |
| 6/28/17  | ND | ND | ND | ND | ND | ND | ND |
| 3/21/17  | ND | ND | ND | ND | ND | ND | ND |
| 11/30/16 | ND | ND | ND | ND | ND | ND | ND |

| MW1      |    |    |    |    |    |    |    |
|----------|----|----|----|----|----|----|----|
| Date:    | G  | D  | O  | B  | T  | E  | X  |
| 9/27/17  | ND | ND | ND | ND | ND | ND | ND |
| 6/28/17  | ND | ND | ND | ND | ND | ND | ND |
| 3/21/17  | ND | ND | ND | ND | ND | ND | ND |
| 11/30/16 | ND | ND | ND | ND | ND | ND | ND |

| ANALYTICAL LEGEND           |                    |              |           |         |         |              |               |
|-----------------------------|--------------------|--------------|-----------|---------|---------|--------------|---------------|
|                             | G                  | D            | O         | B       | T       | E            | X             |
|                             | Gasoline-Range TPH | Diesel-Range | Oil-Range | Benzene | Toluene | Ethylbenzene | Total Xylenes |
| MTCA Method A Cleanup Level | 800                | 500          | 500       | 5       | 1,000   | 700          | 1,000         |

All concentrations in micrograms per liter (µg/l)  
 TPH - Total petroleum hydrocarbons  
 MTCA - Model Toxics Control Act.  
 ND - Not detected above laboratory reporting limit.  
 RED = Exceeds MTCA Method A

**LEGEND**

MW1 APPROXIMATE LOCATION OF MONITORING WELL

INFERRED GROUNDWATER FLOW DIRECTION

|              |     |             |                |
|--------------|-----|-------------|----------------|
| Project Mgr: | MDN | Project No. | 81167550       |
| Drawn By:    | HG  | Scale:      | AS SHOWN       |
| Checked By:  | MDN | File No.    | Exhibit 4      |
| Approved By: | MDN | Date:       | SEPTEMBER 2017 |

**Terracon**  
 Consulting Engineers and Scientists

21905 64th Avenue W., Ste 100 Mountlake Terrace, WA 98043  
 PH. (425) 771-3304 FAX. (425) 771-3549

**GROUNDWATER SAMPLE CONCENTRATIONS**

Safeway #1436 Fueling Station  
 7201 Portland Ave E  
 Tacoma, Pierce County, Washington

ENVIRONMENT

PROJECT 08265.2

EXHIBIT

4

## **APPENDIX B - TABLES**

Table 1-Summary of Groundwater Analytical Results



TABLE 1

**SUMMARY OF GROUNDWATER ANALYTICAL RESULTS**  
**Safeway #1436 Fueling Station**  
**7201 Portland Avenue**  
**Tacoma, Washington**

all concentrations are in micrograms per liter (µg/l)

| Boring ID or MW ID                 | Sample Date | Depth to Groundwater (ft) | Groundwater Elevation (ft) | TPH            |              |            | VOCs     |              |              |               |                  |                  |                        |                        |                 |                |             |         |
|------------------------------------|-------------|---------------------------|----------------------------|----------------|--------------|------------|----------|--------------|--------------|---------------|------------------|------------------|------------------------|------------------------|-----------------|----------------|-------------|---------|
|                                    |             |                           |                            | Gasoline-Range | Diesel-Range | Oil-Range  | Benzene  | Toluene      | Ethylbenzene | Total Xylenes | Isopropylbenzene | N-Propyl Benzene | 1,3,5-Trimethylbenzene | 1,2,4-Trimethylbenzene | S-Butyl Benzene | N-Butylbenzene | Naphthalene |         |
| <b>MTCA Method A Cleanup Level</b> |             |                           |                            | <b>800</b>     | <b>500</b>   | <b>500</b> | <b>5</b> | <b>1,000</b> | <b>700</b>   | <b>1,000</b>  | <b>NE</b>        | <b>800*</b>      | <b>80*</b>             | <b>NE</b>              | <b>800*</b>     | <b>400*</b>    | <b>160</b>  |         |
| MW3                                | 9/27/2017   | 6.88                      | 412.34                     | ND (<50)       | ND (<130)    | ND (<250)  | ND (<2)  | ND (<2)      | ND (<2)      | ND (<4)       | NT               | NT               | NT                     | NT                     | NT              | NT             | NT          |         |
|                                    | 6/28/2017   | 5.44                      | 413.78                     | ND (<50)       | ND (<130)    | ND (<250)  | ND (<2)  | ND (<2)      | ND (<2)      | ND (<4)       | ND (<2)          | ND (<2)          | ND (<2)                | ND (<2)                | ND (<2)         | ND (<2)        | ND (<2)     | ND (<2) |
|                                    | 3/21/2017   | 4.21                      | 415.01                     | ND (<50)       | ND (<130)    | ND (<250)  | ND (<2)  | ND (<2)      | ND (<2)      | ND (<4)       | NT               | NT               | NT                     | NT                     | NT              | NT             | NT          | NT      |
|                                    | 11/30/2016  | 5.82                      | 415.52                     | ND (<50)       | ND (<130)    | ND (<250)  | ND (<2)  | ND (<2)      | ND (<2)      | ND (<2)       | NT               | NT               | NT                     | NT                     | NT              | NT             | NT          | NT      |
| MW4                                | 9/27/2017   | 7.99                      | 411.99                     | ND (<50)       | ND (<130)    | ND (<250)  | ND (<2)  | ND (<2)      | ND (<2)      | ND (<4)       | NT               | NT               | NT                     | NT                     | NT              | NT             | NT          | NT      |
|                                    | 6/28/2017   | 5.91                      | 414.07                     | ND (<50)       | ND (<130)    | ND (<250)  | ND (<2)  | ND (<2)      | ND (<2)      | ND (<4)       | ND (<2)          | ND (<2)          | ND (<2)                | ND (<2)                | ND (<2)         | ND (<2)        | ND (<2)     | ND (<2) |
|                                    | 3/21/2017   | 4.64                      | 415.34                     | ND (<50)       | ND (<130)    | ND (<250)  | ND (<2)  | ND (<2)      | ND (<2)      | ND (<4)       | NT               | NT               | NT                     | NT                     | NT              | NT             | NT          | NT      |
|                                    | 11/30/2016  | 5.42                      | 416.68                     | ND (<50)       | ND (<130)    | ND (<250)  | ND (<2)  | ND (<2)      | ND (<2)      | ND (<2)       | NT               | NT               | NT                     | NT                     | NT              | NT             | NT          | NT      |

Note: Concentrations detected above laboratory reporting limits are in **BOLD** type. Concentrations above MTCA cleanup levels are in bold and shaded.

TPH - total petroleum hydrocarbons

VOCs - volatile organic compounds

MTCA - Model Toxics Control Act

ND - Not detected above laboratory reporting limit.

\* - MTCA Method B Cleanup Level

NT - Not analyzed

**APPENDIX C – ANALYTICAL REPORT AND CHAIN OF CUSTODY FORM**



October 3, 2017

Mr. Mike Noll  
Terracon  
21905 - 64th Ave W, Suite 100  
Mountlake Terrace, WA 98043

Dear Mr. Noll,

On September 28th, 4 samples were received by our laboratory and assigned our laboratory project number EV17090200. The project was identified as your Safeway #1436 Tacoma. The sample identification and requested analyses are outlined on the attached chain of custody record.

No abnormalities or nonconformances were observed during the analyses of the project samples.

Please do not hesitate to call me if you have any questions or if I can be of further assistance.

Sincerely,

ALS Laboratory Group

Rick Bagan  
Laboratory Director



**CERTIFICATE OF ANALYSIS**

|                         |  |                            |                       |
|-------------------------|--|----------------------------|-----------------------|
| <b>CLIENT:</b>          | Terracon<br>21905 - 64th Ave W, Suite 100<br>Mountlake Terrace, WA 98043 | <b>DATE:</b>               | 10/3/2017             |
| <b>CLIENT CONTACT:</b>  | Mike Noll  | <b>ALS JOB#:</b>           | EV17090200            |
| <b>CLIENT PROJECT:</b>  | Safeway #1436 Tacoma   | <b>ALS SAMPLE#:</b>        | EV17090200-01         |
| <b>CLIENT SAMPLE ID</b> | MW-1   | <b>DATE RECEIVED:</b>      | 09/28/2017            |
|                         |  | <b>COLLECTION DATE:</b>    | 9/27/2017 11:40:00 AM |
|                         |  | <b>WDOE ACCREDITATION:</b> | C601                  |

**SAMPLE DATA RESULTS**

| <b>ANALYTE</b>     | <b>METHOD</b> | <b>RESULTS</b> | <b>REPORTING LIMITS</b> | <b>DILUTION FACTOR</b> | <b>UNITS</b> | <b>ANALYSIS DATE</b> | <b>ANALYSIS BY</b> |
|--------------------|---------------|----------------|-------------------------|------------------------|--------------|----------------------|--------------------|
| TPH-Volatile Range | NWTPH-GX      | U              | 50                      | 1                      | UG/L         | 09/29/2017           | SNC                |
| TPH-Diesel Range   | NWTPH-DX      | U              | 130                     | 1                      | UG/L         | 09/29/2017           | EBS                |
| TPH-Oil Range      | NWTPH-DX      | U              | 250                     | 1                      | UG/L         | 09/29/2017           | EBS                |
| Benzene            | EPA-8260      | U              | 2.0                     | 1                      | UG/L         | 10/02/2017           | DLC                |
| Toluene            | EPA-8260      | U              | 2.0                     | 1                      | UG/L         | 10/02/2017           | DLC                |
| Ethylbenzene       | EPA-8260      | U              | 2.0                     | 1                      | UG/L         | 10/02/2017           | DLC                |
| m,p-Xylene         | EPA-8260      | U              | 4.0                     | 1                      | UG/L         | 10/02/2017           | DLC                |
| o-Xylene           | EPA-8260      | U              | 2.0                     | 1                      | UG/L         | 10/02/2017           | DLC                |

| <b>SURROGATE</b> | <b>METHOD</b> | <b>%REC</b> | <b>ANALYSIS DATE</b> | <b>ANALYSIS BY</b> |
|------------------|---------------|-------------|----------------------|--------------------|
| TFT              | NWTPH-GX      | <b>106</b>  | 09/29/2017           | SNC                |
| C25              | NWTPH-DX      | <b>91.4</b> | 09/29/2017           | EBS                |
| Toluene-d8       | EPA-8260      | <b>107</b>  | 10/02/2017           | DLC                |

U - Analyte analyzed for but not detected at level above reporting limit.



**CERTIFICATE OF ANALYSIS**

|                         |  |                            |                      |
|-------------------------|--|----------------------------|----------------------|
| <b>CLIENT:</b>          | Terracon<br>21905 - 64th Ave W, Suite 100<br>Mountlake Terrace, WA 98043 | <b>DATE:</b>               | 10/3/2017            |
| <b>CLIENT CONTACT:</b>  | Mike Noll  | <b>ALS JOB#:</b>           | EV17090200           |
| <b>CLIENT PROJECT:</b>  | Safeway #1436 Tacoma   | <b>ALS SAMPLE#:</b>        | EV17090200-02        |
| <b>CLIENT SAMPLE ID</b> | MW-2   | <b>DATE RECEIVED:</b>      | 09/28/2017           |
|                         |  | <b>COLLECTION DATE:</b>    | 9/27/2017 1:00:00 PM |
|                         |  | <b>WDOE ACCREDITATION:</b> | C601                 |

**SAMPLE DATA RESULTS**

| <b>ANALYTE</b>     | <b>METHOD</b> | <b>RESULTS</b> | <b>REPORTING LIMITS</b> | <b>DILUTION FACTOR</b> | <b>UNITS</b> | <b>ANALYSIS DATE</b> | <b>ANALYSIS BY</b> |
|--------------------|---------------|----------------|-------------------------|------------------------|--------------|----------------------|--------------------|
| TPH-Volatile Range | NWTPH-GX      | U              | 50                      | 1                      | UG/L         | 09/29/2017           | SNC                |
| TPH-Diesel Range   | NWTPH-DX      | U              | 130                     | 1                      | UG/L         | 09/29/2017           | EBS                |
| TPH-Oil Range      | NWTPH-DX      | U              | 250                     | 1                      | UG/L         | 09/29/2017           | EBS                |
| Benzene            | EPA-8260      | U              | 2.0                     | 1                      | UG/L         | 10/02/2017           | DLC                |
| Toluene            | EPA-8260      | U              | 2.0                     | 1                      | UG/L         | 10/02/2017           | DLC                |
| Ethylbenzene       | EPA-8260      | U              | 2.0                     | 1                      | UG/L         | 10/02/2017           | DLC                |
| m,p-Xylene         | EPA-8260      | U              | 4.0                     | 1                      | UG/L         | 10/02/2017           | DLC                |
| o-Xylene           | EPA-8260      | U              | 2.0                     | 1                      | UG/L         | 10/02/2017           | DLC                |

| <b>SURROGATE</b> | <b>METHOD</b> | <b>%REC</b> | <b>ANALYSIS DATE</b> | <b>ANALYSIS BY</b> |
|------------------|---------------|-------------|----------------------|--------------------|
| TFT              | NWTPH-GX      | 113         | 09/29/2017           | SNC                |
| C25              | NWTPH-DX      | 99.1        | 09/29/2017           | EBS                |
| Toluene-d8       | EPA-8260      | 102         | 10/02/2017           | DLC                |

U - Analyte analyzed for but not detected at level above reporting limit.



**CERTIFICATE OF ANALYSIS**

|                         |  |                            |                       |
|-------------------------|--|----------------------------|-----------------------|
| <b>CLIENT:</b>          | Terracon<br>21905 - 64th Ave W, Suite 100<br>Mountlake Terrace, WA 98043 | <b>DATE:</b>               | 10/3/2017             |
| <b>CLIENT CONTACT:</b>  | Mike Noll  | <b>ALS JOB#:</b>           | EV17090200            |
| <b>CLIENT PROJECT:</b>  | Safeway #1436 Tacoma   | <b>ALS SAMPLE#:</b>        | EV17090200-03         |
| <b>CLIENT SAMPLE ID</b> | MW-3   | <b>DATE RECEIVED:</b>      | 09/28/2017            |
|                         |  | <b>COLLECTION DATE:</b>    | 9/27/2017 12:40:00 PM |
|                         |  | <b>WDOE ACCREDITATION:</b> | C601                  |

**SAMPLE DATA RESULTS**

| <b>ANALYTE</b>     | <b>METHOD</b> | <b>RESULTS</b> | <b>REPORTING LIMITS</b> | <b>DILUTION FACTOR</b> | <b>UNITS</b> | <b>ANALYSIS DATE</b> | <b>ANALYSIS BY</b> |
|--------------------|---------------|----------------|-------------------------|------------------------|--------------|----------------------|--------------------|
| TPH-Volatile Range | NWTPH-GX      | U              | 50                      | 1                      | UG/L         | 09/29/2017           | SNC                |
| TPH-Diesel Range   | NWTPH-DX      | U              | 130                     | 1                      | UG/L         | 09/29/2017           | EBS                |
| TPH-Oil Range      | NWTPH-DX      | U              | 250                     | 1                      | UG/L         | 09/29/2017           | EBS                |
| Benzene            | EPA-8260      | U              | 2.0                     | 1                      | UG/L         | 10/02/2017           | DLC                |
| Toluene            | EPA-8260      | U              | 2.0                     | 1                      | UG/L         | 10/02/2017           | DLC                |
| Ethylbenzene       | EPA-8260      | U              | 2.0                     | 1                      | UG/L         | 10/02/2017           | DLC                |
| m,p-Xylene         | EPA-8260      | U              | 4.0                     | 1                      | UG/L         | 10/02/2017           | DLC                |
| o-Xylene           | EPA-8260      | U              | 2.0                     | 1                      | UG/L         | 10/02/2017           | DLC                |

| <b>SURROGATE</b> | <b>METHOD</b> | <b>%REC</b> | <b>ANALYSIS DATE</b> | <b>ANALYSIS BY</b> |
|------------------|---------------|-------------|----------------------|--------------------|
| TFT              | NWTPH-GX      | 112         | 09/29/2017           | SNC                |
| C25              | NWTPH-DX      | 94.3        | 09/29/2017           | EBS                |
| Toluene-d8       | EPA-8260      | 108         | 10/02/2017           | DLC                |

U - Analyte analyzed for but not detected at level above reporting limit.



**CERTIFICATE OF ANALYSIS**

|                         |  |                            |                      |
|-------------------------|--|----------------------------|----------------------|
| <b>CLIENT:</b>          | Terracon<br>21905 - 64th Ave W, Suite 100<br>Mountlake Terrace, WA 98043 | <b>DATE:</b>               | 10/3/2017            |
| <b>CLIENT CONTACT:</b>  | Mike Noll  | <b>ALS JOB#:</b>           | EV17090200           |
| <b>CLIENT PROJECT:</b>  | Safeway #1436 Tacoma   | <b>ALS SAMPLE#:</b>        | EV17090200-04        |
| <b>CLIENT SAMPLE ID</b> | MW-4   | <b>DATE RECEIVED:</b>      | 09/28/2017           |
|                         |  | <b>COLLECTION DATE:</b>    | 9/27/2017 2:00:00 PM |
|                         |  | <b>WDOE ACCREDITATION:</b> | C601                 |

**SAMPLE DATA RESULTS**

| <b>ANALYTE</b>     | <b>METHOD</b> | <b>RESULTS</b> | <b>REPORTING LIMITS</b> | <b>DILUTION FACTOR</b> | <b>UNITS</b> | <b>ANALYSIS DATE</b> | <b>ANALYSIS BY</b> |
|--------------------|---------------|----------------|-------------------------|------------------------|--------------|----------------------|--------------------|
| TPH-Volatile Range | NWTPH-GX      | U              | 50                      | 1                      | UG/L         | 09/29/2017           | SNC                |
| TPH-Diesel Range   | NWTPH-DX      | U              | 130                     | 1                      | UG/L         | 09/29/2017           | EBS                |
| TPH-Oil Range      | NWTPH-DX      | U              | 250                     | 1                      | UG/L         | 09/29/2017           | EBS                |
| Benzene            | EPA-8260      | U              | 2.0                     | 1                      | UG/L         | 10/02/2017           | DLC                |
| Toluene            | EPA-8260      | U              | 2.0                     | 1                      | UG/L         | 10/02/2017           | DLC                |
| Ethylbenzene       | EPA-8260      | U              | 2.0                     | 1                      | UG/L         | 10/02/2017           | DLC                |
| m,p-Xylene         | EPA-8260      | U              | 4.0                     | 1                      | UG/L         | 10/02/2017           | DLC                |
| o-Xylene           | EPA-8260      | U              | 2.0                     | 1                      | UG/L         | 10/02/2017           | DLC                |

| <b>SURROGATE</b> | <b>METHOD</b> | <b>%REC</b> | <b>ANALYSIS DATE</b> | <b>ANALYSIS BY</b> |
|------------------|---------------|-------------|----------------------|--------------------|
| TFT              | NWTPH-GX      | 110         | 09/29/2017           | SNC                |
| C25              | NWTPH-DX      | 99.4        | 09/29/2017           | EBS                |
| Toluene-d8       | EPA-8260      | 106         | 10/02/2017           | DLC                |

U - Analyte analyzed for but not detected at level above reporting limit.



**CERTIFICATE OF ANALYSIS**

CLIENT: Terracon  
 21905 - 64th Ave W, Suite 100  
 Mountlake Terrace, WA 98043

DATE: 10/3/2017  
 ALS SDG#: EV17090200  
 WDOE ACCREDITATION: C601

CLIENT CONTACT: Mike Noll  
 CLIENT PROJECT: Safeway #1436 Tacoma

**LABORATORY BLANK RESULTS**

**MBG-092817W4 - Batch 120523 - Water by NWTPH-GX**

| ANALYTE            | METHOD   | RESULTS | UNITS | REPORTING LIMITS | ANALYSIS DATE | ANALYSIS BY |
|--------------------|----------|---------|-------|------------------|---------------|-------------|
| TPH-Volatile Range | NWTPH-GX | U       | UG/L  | 50               | 09/28/2017    | SNC         |

U - Analyte analyzed for but not detected at level above reporting limit.

**MB-092817W - Batch 120552 - Water by NWTPH-DX**

| ANALYTE          | METHOD   | RESULTS | UNITS | REPORTING LIMITS | ANALYSIS DATE | ANALYSIS BY |
|------------------|----------|---------|-------|------------------|---------------|-------------|
| TPH-Diesel Range | NWTPH-DX | U       | UG/L  | 130              | 09/28/2017    | EBS         |
| TPH-Oil Range    | NWTPH-DX | U       | UG/L  | 250              | 09/28/2017    | EBS         |

U - Analyte analyzed for but not detected at level above reporting limit.

**MB-092817W2 - Batch 120592 - Water by EPA-8260**

| ANALYTE            | METHOD   | RESULTS | UNITS | REPORTING LIMITS | ANALYSIS DATE | ANALYSIS BY |
|--------------------|----------|---------|-------|------------------|---------------|-------------|
| 1,1-Dichloroethene | EPA-8260 | U       | UG/L  | 2.0              | 09/28/2017    | DLC         |
| Benzene            | EPA-8260 | U       | UG/L  | 2.0              | 09/28/2017    | DLC         |
| Toluene            | EPA-8260 | U       | UG/L  | 2.0              | 09/28/2017    | DLC         |
| Ethylbenzene       | EPA-8260 | U       | UG/L  | 2.0              | 09/28/2017    | DLC         |
| m,p-Xylene         | EPA-8260 | U       | UG/L  | 4.0              | 09/28/2017    | DLC         |
| o-Xylene           | EPA-8260 | U       | UG/L  | 2.0              | 09/28/2017    | DLC         |

U - Analyte analyzed for but not detected at level above reporting limit.



**CERTIFICATE OF ANALYSIS**

|                 |  |                     |            |
|-----------------|--|---------------------|------------|
| CLIENT:         | Terracon<br>21905 - 64th Ave W, Suite 100<br>Mountlake Terrace, WA 98043 | DATE:               | 10/3/2017  |
| CLIENT CONTACT: | Mike Noll  | ALS SDG#:           | EV17090200 |
| CLIENT PROJECT: | Safeway #1436 Tacoma   | WDOE ACCREDITATION: | C601       |

**LABORATORY CONTROL SAMPLE RESULTS**

**ALS Test Batch ID: 120523 - Water by NWTPH-GX**

| SPIKED COMPOUND          | METHOD   | %REC | RPD | QUAL | LIMITS |       | ANALYSIS DATE | ANALYSIS BY |
|--------------------------|----------|------|-----|------|--------|-------|---------------|-------------|
|                          |          |      |     |      | MIN    | MAX   |               |             |
| TPH-Volatile Range - BS  | NWTPH-GX | 106  |     |      | 66.5   | 122.7 | 09/28/2017    | SNC         |
| TPH-Volatile Range - BSD | NWTPH-GX | 104  | 2   |      | 66.5   | 122.7 | 09/28/2017    | SNC         |

**ALS Test Batch ID: 120552 - Water by NWTPH-DX**

| SPIKED COMPOUND        | METHOD   | %REC | RPD | QUAL | LIMITS |       | ANALYSIS DATE | ANALYSIS BY |
|------------------------|----------|------|-----|------|--------|-------|---------------|-------------|
|                        |          |      |     |      | MIN    | MAX   |               |             |
| TPH-Diesel Range - BS  | NWTPH-DX | 96.1 |     |      | 67     | 125.2 | 09/28/2017    | EBS         |
| TPH-Diesel Range - BSD | NWTPH-DX | 94.3 | 2   |      | 67     | 125.2 | 09/28/2017    | EBS         |

**ALS Test Batch ID: 120592 - Water by EPA-8260**

| SPIKED COMPOUND          | METHOD   | %REC | RPD | QUAL | LIMITS |     | ANALYSIS DATE | ANALYSIS BY |
|--------------------------|----------|------|-----|------|--------|-----|---------------|-------------|
|                          |          |      |     |      | MIN    | MAX |               |             |
| 1,1-Dichloroethene - BS  | EPA-8260 | 113  |     |      | 72.5   | 136 | 09/28/2017    | DLC         |
| 1,1-Dichloroethene - BSD | EPA-8260 | 109  | 4   |      | 72.5   | 136 | 09/28/2017    | DLC         |
| Benzene - BS             | EPA-8260 | 107  |     |      | 74.7   | 143 | 09/28/2017    | DLC         |
| Benzene - BSD            | EPA-8260 | 102  | 5   |      | 74.7   | 143 | 09/28/2017    | DLC         |
| Toluene - BS             | EPA-8260 | 106  |     |      | 71.7   | 139 | 09/28/2017    | DLC         |
| Toluene - BSD            | EPA-8260 | 100  | 5   |      | 71.7   | 139 | 09/28/2017    | DLC         |

APPROVED BY

Laboratory Director



**ALS Environmental**  
 8620 Holly Drive, Suite 100  
 Everett, WA 98208  
 Phone (425) 356-2600  
 Fax (425) 356-2626  
 http://www.alsglobal.com

# Chain Of Custody/ Laboratory Analysis Request

ALS Job# (Laboratory Use Only)

**EVI7090200**

Date **9-28-2017** Page **1** Of **1**

| PROJECT ID: <b>Saleway #1436 Tacoma</b> |         |      |      |      | ANALYSIS REQUESTED  |                                   |   |          |   |                                   |  |  |  |                                     |  |                               | OTHER (Specify) |  |     |   |
|---|---------|------|------|------|---|-----------------------------------|---|----------|---|-----------------------------------|--|--|--|-------------------------------------|--|-------------------------------|-----------------|--|-----|---|
| REPORT TO COMPANY: <b>Terracon</b>      |         |      |      |      | NWTPH-HCID<br>NWTPH-DX<br>NWTPH-GX<br>BTEX by EPA 8021 <input type="checkbox"/> BTEX by EPA 8260 <input checked="" type="checkbox"/><br>MTBE by EPA 8021 <input type="checkbox"/> MTBE by EPA 8260 <input type="checkbox"/><br>Halogenated Volatiles by EPA 8260<br>Volatile Organic Compounds by EPA 8260<br>EDB / EDC by EPA 8260 SIM (water)<br>EDB / EDC by EPA 8260 (soil)<br>Semivolatile Organic Compounds by EPA 8270<br>Polycyclic Aromatic Hydrocarbons (PAH) by EPA 8270 SIM<br>PCB by EPA 8082 <input type="checkbox"/> Pesticides by EPA 8081 <input type="checkbox"/><br>Metals-MTCA-5 <input type="checkbox"/> RCRA-8 <input type="checkbox"/> Pri Pol <input type="checkbox"/> TAL <input type="checkbox"/><br>Metals Other (Specify)<br>TCLP-Metals <input type="checkbox"/> VOA <input type="checkbox"/> Semi-Vol <input type="checkbox"/> Pest <input type="checkbox"/> Herbs <input type="checkbox"/> | PROJECT MANAGER: <b>Mike Noll</b> |   | ADDRESS: |   | PHONE: <b>(425) 409-2602</b> FAX: |  | P.O. #: <b>81167550 Test 2</b> E-MAIL: <b>Mike.Noll@terracon.com</b> |  | INVOICE TO COMPANY: <b>Terracon</b> |  | ATTENTION: <b>Raven Meyer</b> |                 | ADDRESS: <b>Karen.Meyer@terracon.com</b> |     | NUMBER OF CONTAINERS<br>RECEIVED IN GOOD CONDITION? |
| SAMPLE I.D.                             | DATE    | TIME | TYPE | LAB# |   |                                   |   |          |   |                                   |  |  |  |                                     |  |                               |                 |  |     |   |
| 1. MW-1                                 | 9-27-17 | 1140 | W    | 1    |   |                                   | X | X        | X |                                   |  |  |  |                                     |  |                               |                 |  | 945 |   |
| 2. MW-2                                 | 9-27-17 | 1300 | W    | 2    |   |                                   | X | X        | X |                                   |  |  |  |                                     |  |                               |                 |  | 6   |   |
| 3. MW-3                                 | 9-27-17 | 1240 | W    | 3    |   |                                   | X | X        | X |                                   |  |  |  |                                     |  |                               |                 |  | 5   |   |
| 4. MW-4                                 | 9-27-17 | 1400 | W    | 4    |   |                                   | X | X        | X |                                   |  |  |  |                                     |  |                               |                 |  | 6   |   |
| 5.                                      |         |      |      |      |   |                                   |   |          |   |                                   |  |  |  |                                     |  |                               |                 |  |     |   |
| 6.                                      |         |      |      |      |   |                                   |   |          |   |                                   |  |  |  |                                     |  |                               |                 |  |     |   |
| 7.                                      |         |      |      |      |   |                                   |   |          |   |                                   |  |  |  |                                     |  |                               |                 |  |     |   |
| 8.                                      |         |      |      |      |   |                                   |   |          |   |                                   |  |  |  |                                     |  |                               |                 |  |     |   |
| 9.                                      |         |      |      |      |   |                                   |   |          |   |                                   |  |  |  |                                     |  |                               |                 |  |     |   |
| 10.                                     |         |      |      |      |   |                                   |   |          |   |                                   |  |  |  |                                     |  |                               |                 |  |     |   |

**SPECIAL INSTRUCTIONS**

**SIGNATURES (Name, Company, Date, Time):**

1. Relinquished By: Mitchell S. R. / Terracon / 9-28-2017 /  
 Received By: Frank Tollen, ALS, 9-28-2017, 1040

2. Relinquished By: \_\_\_\_\_  
 Received By: \_\_\_\_\_

**TURNAROUND REQUESTED in Business Days\***

Organic, Metals & Inorganic Analysis

10 5 3 2 1 SAME DAY

Fuels & Hydrocarbon Analysis

3 1 SAME DAY

OTHER: \_\_\_\_\_  
 Specify: \_\_\_\_\_  
 \_\_\_\_\_  
 \_\_\_\_\_

\*Turnaround request less than standard may incur Rush Charges