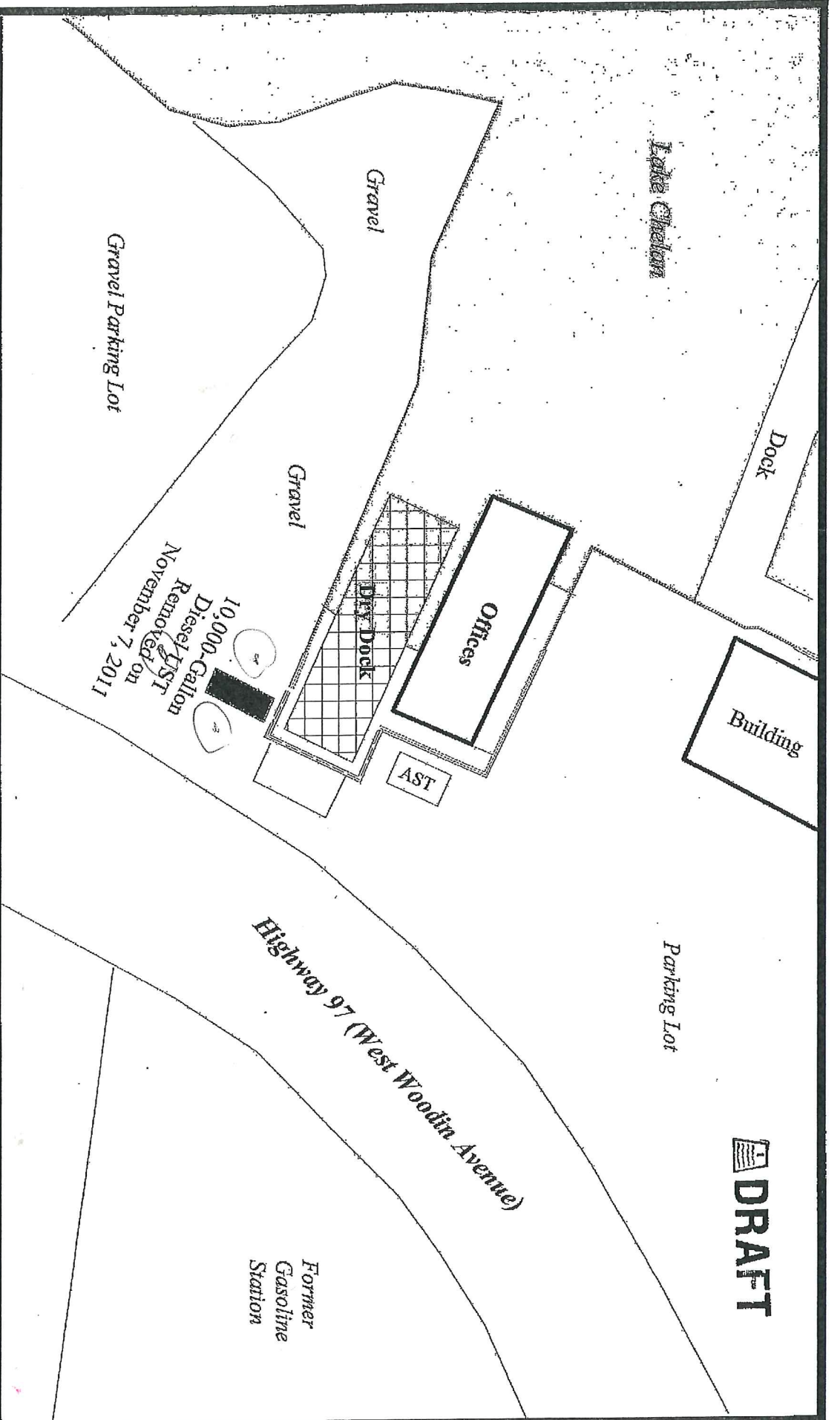


 **DRAFT**



**ENVIRONMENTAL
ASSOCIATES, INC.**

1380 - 112th Avenue NE, Suite 300
Bellevue, Washington 98004



SITE PLAN OVERVIEW

Lake Chelan Boat Company
1418 West Woodin Avenue
Chelan, Washington



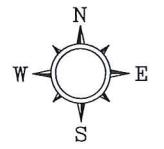
Job Number:
JN-31174

Date:
November 2011

Scale:
1"=40'

Plate:
2

PROJECT NUMBER STCG-422
 APPROVED BY
 CHECKED BY
 DRAWN BY ICD 4/20/2012
 FILENAME STCG-422_1201_1_I.DWG



- LEGEND**
- MW-1 GROUNDWATER MONITORING WELL LOCATION AND DESIGNATION
 - D TPH-d - TOTAL PETROLEUM HYDROCARBONS AS DIESEL (mg/kg)
 - O TPH-o - TOTAL PETROLEUM HYDROCARBONS AS OIL (mg/kg)
 - B BENZENE (mg/kg)
 - T TOLUENE (mg/kg)
 - E ETHYLBENZENE (mg/kg)
 - X TOTAL XYLENES (mg/kg)
 - mg/kg MILLIGRAMS PER KILOGRAM
 - DP SAMPLING DEPTH (FEET)
 - NA NOT ANALYZED

B-3		B-3		B-3	
03/06/12		03/06/12		03/06/12	
DP	11'	DP	16'	DP	18'
D=	<25	D=	<25	D=	<25
O=	<50	O=	<50	O=	<50
B=	<0.030	B=	<0.030	B=	<0.030
T=	<0.050	T=	<0.050	T=	<0.050
E=	<0.050	E=	<0.050	E=	<0.050
X=	<0.20	X=	<0.20	X=	<0.20

B-2		B-2	
03/05/12		03/05/12	
DP	11'	DP	16'
D=	61	D=	NA
O=	<50	O=	NA
B=	<0.030	B=	<0.030
T=	<0.050	T=	<0.050
E=	<0.050	E=	<0.050
X=	<0.20	X=	<0.20

B-4		B-4	
03/06/12		03/06/12	
DP	16'	DP	18'
D=	<25	D=	<25
O=	<50	O=	<50
B=	<0.030	B=	<0.030
T=	<0.050	T=	<0.050
E=	<0.050	E=	<0.050
X=	<0.20	X=	<0.20

B-1		B-1	
03/05/12		03/05/12	
DP	11'	DP	16'
D=	<25	D=	<25
O=	<50	O=	<50
B=	<0.030	B=	<0.030
T=	<0.050	T=	<0.050
E=	<0.050	E=	<0.050
X=	<0.20	X=	<0.20

10,000-GALLON DIESEL UST REMOVED ON NOVEMBER 7, 2011

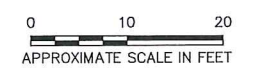


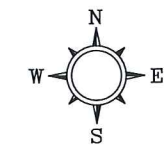
FIGURE 3
 SOIL ANALYTICAL RESULTS MAP
 03/05/2012 - 03/06/2012

LAKE CHELAN BOAT COMPANY
 1418 WEST WOODIN AVENUE
 CHELAN, WASHINGTON

HIGHWAY 97 (WEST WOODIN AVENUE)



PROJECT NUMBER: STCG-422
 APPROVED BY: []
 CHECKED BY: []
 DRAWN BY: ICD 3/23/2015
 FILENAME: STCG-422_1404_3.DWG



LEGEND

- MW-1 GROUNDWATER MONITORING WELL LOCATION AND DESIGNATION
- 89.55** GROUNDWATER ELEVATION (FEET)
- D TPH-d - TOTAL PETROLEUM HYDROCARBONS AS DIESEL ($\mu\text{g/L}$)
- 500 INFERRED DIESEL ISOCONCENTRATION LINE ($\mu\text{g/L}$)
- $\mu\text{g/L}$ MICROGRAMS PER LITER
- BOLD VALUES INDICATE EXCEEDANCE OF MTCA METHOD A CLEANUP LEVELS**

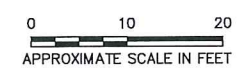
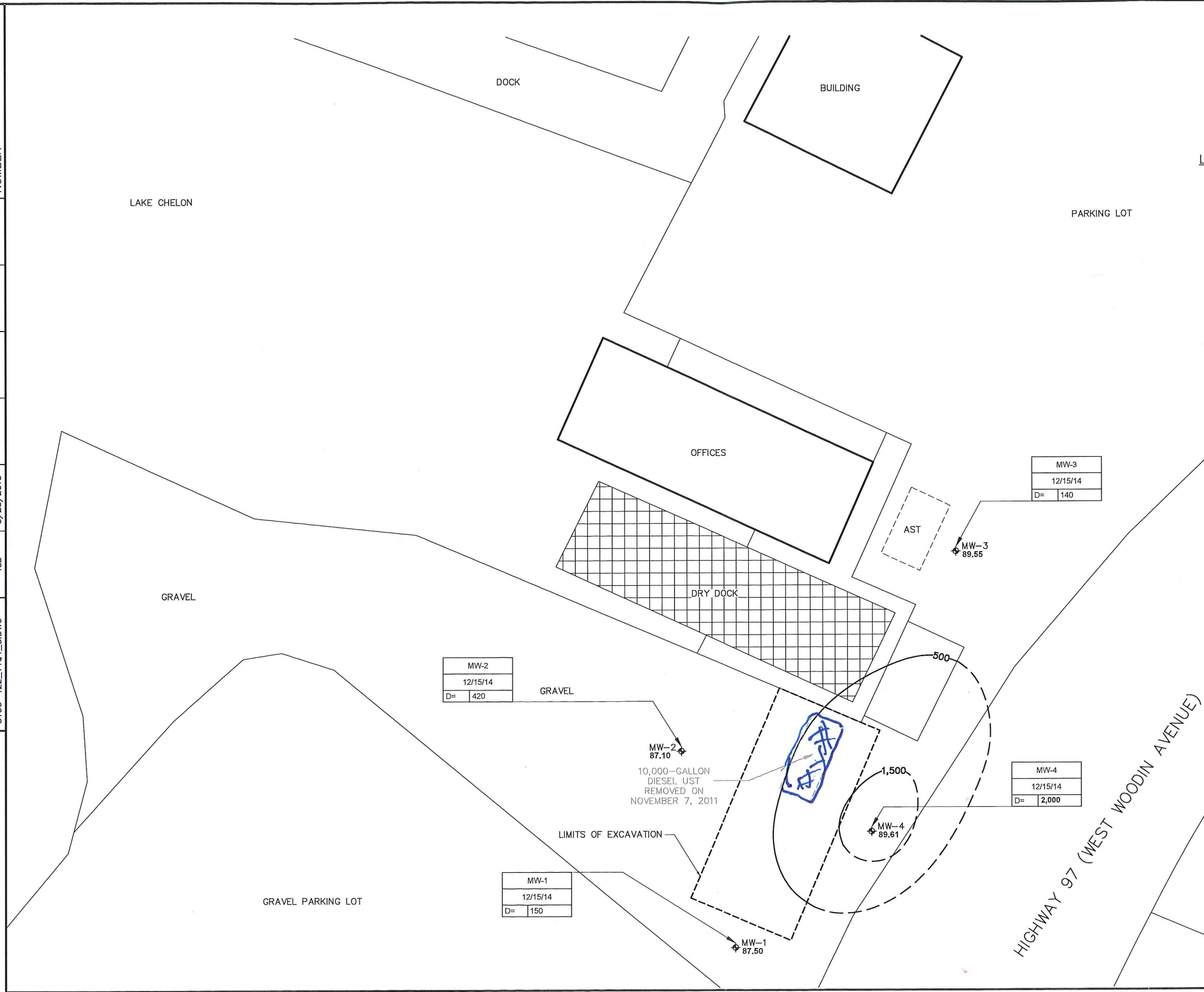
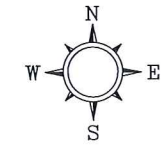


FIGURE 2
 INFERRED DIESEL ISOCONCENTRATION MAP IN
 GROUNDWATER
 12/15/2014

LAKE CHELAN BOAT COMPANY
 1418 WEST WOODIN AVENUE
 CHELAN, WASHINGTON

PROJECT NUMBER STCG-422
 APPROVED BY
 CHECKED BY
 DRAWN BY ICD 3/23/2015
 FILENAME STCG-422_XSECTIONS_1.DWG



LEGEND

- MW-1 GROUNDWATER MONITORING WELL LOCATION AND DESIGNATION
- A-A' LINE OF LITHOLOGIC CROSS SECTION AND PROJECTION LINE OF WELL

0 10 20
 APPROXIMATE SCALE IN FEET

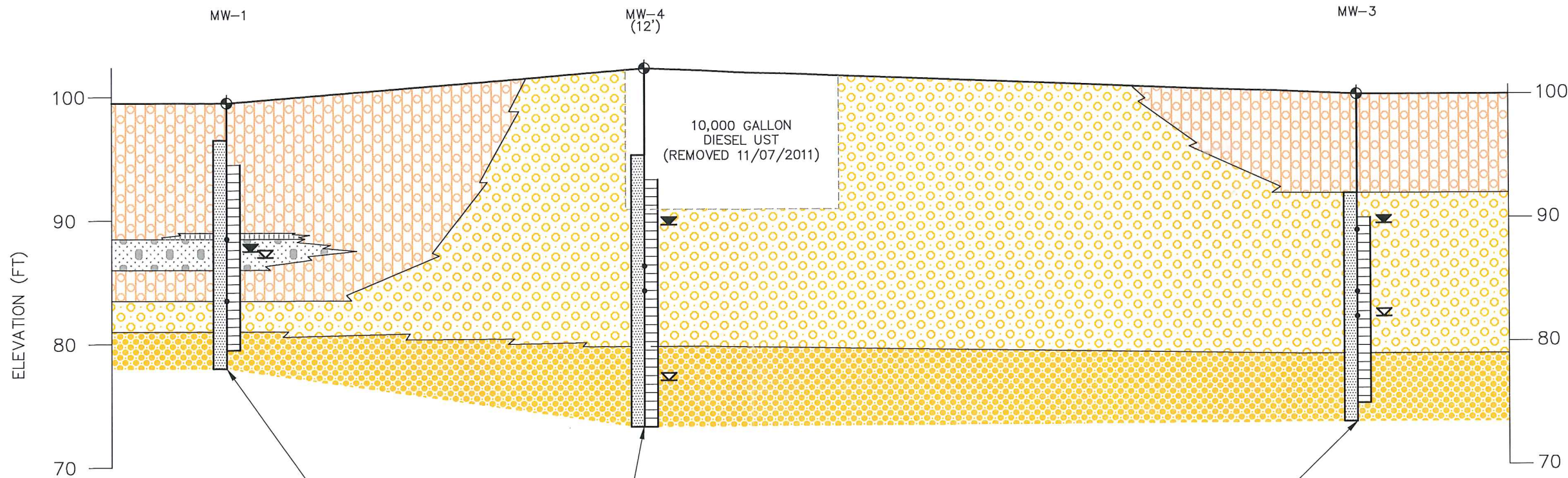
FIGURE 3

SITE MAP WITH GEOLOGIC CROSS SECTION A-A'

LAKE CHELAN BOAT COMPANY
 1418 WEST WOODIN AVENUE
 CHELAN, WASHINGTON

SOUTHWEST
A

NORTHEAST
A'

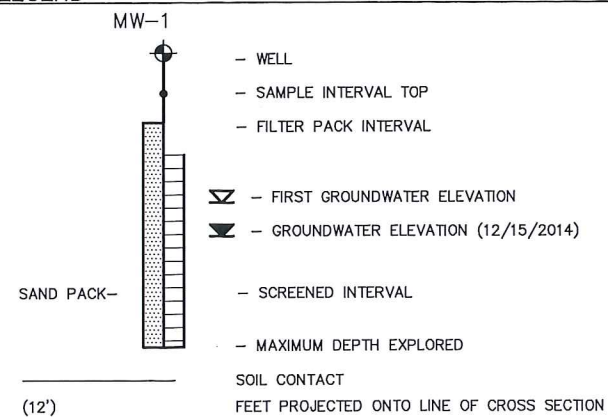


MW-1		03/05/2012					
DEPTH (ft)	TPH-D (mg/kg)	TPH-O (mg/kg)	B (mg/kg)	T (mg/kg)	E (mg/kg)	X (mg/kg)	
11	<25	<50	<0.030	<0.050	<0.050	<0.20	
16	<25	<50	<0.030	<0.050	<0.050	<0.20	

MW-4		03/06/2012					
DEPTH (ft)	TPH-D (mg/kg)	TPH-O (mg/kg)	B (mg/kg)	T (mg/kg)	E (mg/kg)	X (mg/kg)	
16	<25	<50	<0.030	<0.050	<0.050	<0.20	
18	<25	<50	<0.030	<0.050	<0.050	<0.20	

MW-3		03/06/2012					
DEPTH (ft)	TPH-D (mg/kg)	TPH-O (mg/kg)	B (mg/kg)	T (mg/kg)	E (mg/kg)	X (mg/kg)	
11	<25	<50	<0.030	<0.050	<0.050	<0.20	
16	<25	<50	<0.030	<0.050	<0.050	<0.20	
18	<25	<50	<0.030	<0.050	<0.050	<0.20	

LEGEND



- SP= POORLY-GRADED SANDS, GRAVELLY SANDS, LITTLE OR NO FINES
- SM= SILTY-SANDS, SAND-SILT MIXTURES
- ML= INORGANIC SILTS AND VERY FINE SANDS
- SW= WELL-GRADED SANDS, GRAVELLY SANDS, LITTLE OR NO FINES
- GP= POORLY-GRADED GRAVELS, GRAVEL-SAND MIXTURES, LITTLE OR NO FINES

SOIL ANALYTICAL PARAMETERS

- D TPH-D - TOTAL PETROLEUM HYDROCARBONS AS DIESEL (mg/kg)
- O TPH-O - TOTAL PETROLEUM HYDROCARBONS AS OIL (mg/kg)
- B BENZENE (mg/kg)
- T TOLUENE (mg/kg)
- E ETHYLBENZENE (mg/kg)
- X TOTAL XYLENES (mg/kg)
- mg/kg MILLIGRAMS PER KILOGRAM
- <25 LESS THAN THE LABORATORY REPORTING LIMIT

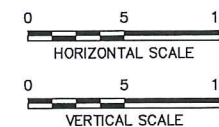


FIGURE 4

GEOLOGIC CROSS SECTION A-A' WITH SOIL CONCENTRATIONS

LAKE CHELAN BOAT COMPANY
1418 WEST WOODIN AVENUE
CHELAN, WASHINGTON