

Former Unocal Bulk Plant No. 306562
 1329 West Woodin Avenue
 Chelan, Washington

FIGURE 1
 Potentiometric Map
 November 29, 2012

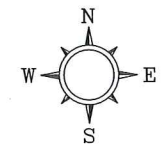
DATE: 1/25/2013

FILE NAME: 306562 Site Map 2012.dwg

Source: Figure modified from drawing provided by ERSR, Dated: 11/09/06.



PROJECT NUMBER STCG-422
 APPROVED BY
 CHECKED BY
 DRAWN BY ICD 3/23/2015
 FILENAME STCG-422_1404_3.DWG



LEGEND

- MW-1 GROUNDWATER MONITORING WELL LOCATION AND DESIGNATION
- 89.55** GROUNDWATER ELEVATION (FEET)
- D TPH-d - TOTAL PETROLEUM HYDROCARBONS AS DIESEL ($\mu\text{g/L}$)
- 500 INFERRED DIESEL ISOCONCENTRATION LINE ($\mu\text{g/L}$)
- $\mu\text{g/L}$ MICROGRAMS PER LITER
- BOLD VALUES INDICATE EXCEEDANCE OF MTCA METHOD A CLEANUP LEVELS**

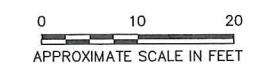
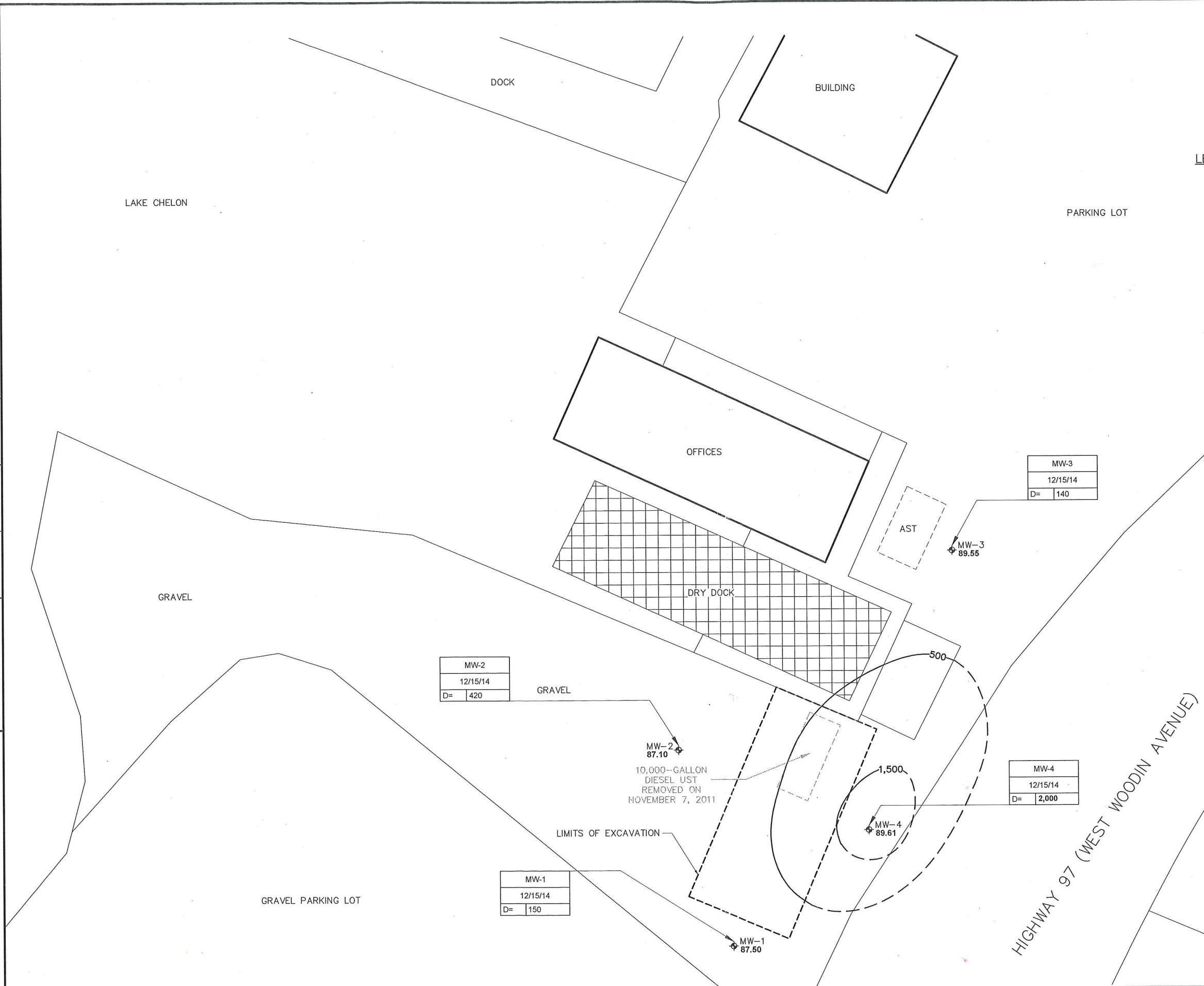


FIGURE 2
 INFERRED DIESEL ISOCONCENTRATION MAP IN
 GROUNDWATER
 12/15/2014

LAKE CHELAN BOAT COMPANY
 1418 WEST WOODIN AVENUE
 CHELAN, WASHINGTON