

antea group

QUARTERLY GROUNDWATER MONITORING REPORT

RECEIVED

FEB 02 2018

Dept of Ecology
Central Regional Office

Fourth Quarter of 2017

Lake Chelan Boat Company

1418 West Woodin Avenue, Chelan, WA 98816

VCP Project No. CE0410

Antea® Group Project No. STCG-422-2

January 30, 2018

Prepared for:

Lake Chelan Boat Company

Mr. Jack Raines

1418 West Woodin Avenue

Chelan, WA 98816

Prepared by:

Antea Group

4006 148th Avenue NE

Redmond, WA 98052

800 477 7411



Antea USA, Inc.
4006 148th Avenue NE
Redmond, Washington 98052 USA
www.anteagroup.com

January 30, 2018

Lake Chelan Boat Company
Mr. Jack Raines
1418 West Woodin Avenue
Chelan, WA 98816

RECEIVED

FEB 02 2018

Dept of Ecology
Central Regional Office

Subject: Quarterly Groundwater Monitoring Report – Fourth Quarter of 2017
Lake Chelan Boat Company
1418 West Woodin Avenue
Chelan, Washington
Antea Group Project No. STCG-422-2
Colony Claim No. 208188

Dear Mr. Raines:

Antea®Group (Antea Group) has prepared this report to summarize groundwater monitoring performed at the above referenced site on December 11, 2017. A site location map is included on Figure 1.

GROUNDWATER SAMPLING AND ANALYSES

Before the sampling events, Antea Group measured depth to water in monitoring wells MW-1 through MW-14 using an electronic water level meter. This information was recorded on waterproof field sheets. Groundwater elevations were measured to an accuracy of 0.01 feet. Samples were withdrawn from wells MW-7, and MW-9 through MW-14 using a low-flow/low-purge technique with a peristaltic pump. Field parameters of dissolved oxygen (DO), pH, oxygen reduction potential, conductivity, total dissolved solids, and temperature were collected during low-flow/low-purge procedures. A summary of field parameter results is included in Table 1. The samples were placed in the appropriate laboratory-provided containers. Samples were labeled, placed into ice filled coolers, logged onto chain-of-custody forms and transported to the laboratory. No separate-phase hydrocarbons were observed in any of the monitoring wells.

During the December monitoring event, the groundwater flow direction was generally toward the west-southwest at an approximate gradient of 0.04 feet/foot. A summary of current and historical groundwater elevations is included in Table 2. A site map showing groundwater elevations and contours is included on Figure 2. Groundwater

samples from the December event were submitted to ALS Laboratory Group in Everett, Washington, and were analyzed for: total petroleum hydrocarbons in the diesel range (TPH-D) and in the oil range (TPH-O) using Northwest Method NWTPH-Dx; and benzene, toluene, ethylbenzene, and total xylenes (BTEX) using USEPA Method 8021.

GROUNDWATER ANALYTICAL RESULTS

Analytical results from the December event indicate that the groundwater samples collected from monitoring wells MW-9 through MW-12 had concentrations of TPH-D that were detected above the Washington State Department of Ecology (Ecology) Model Toxics Control Act (MTCA) Method A cleanup level. Detected concentrations of TPH-D, TPH-O and BTEX compounds were below the respective MTCA Method A cleanup levels in the groundwater samples collected from wells MW-7, MW-13 and MW-14. Groundwater monitoring well MW-3 has been non-detect and/or below MTCA Method A cleanup levels for nine consecutive quarters and has been removed from the sampling program since September 2016. Wells MW-1 and MW-4 through MW-6 had been below MTCA Method A cleanup levels for four consecutive quarters and have been removed from the sampling program as well since September 2016. Well MW-8 was removed from the sampling program since September 2017 due to no detections for its first two quarters of sampling. A summary of current and historical analytical results are presented in Tables 1 through Table 6. A site map that shows TPH-D, TPH-O, and BTEX concentrations is included on Figure 3. The analytical report and chain-of-custody documentation are presented as Appendix A. Laboratory control sample results are included in the analytical report.

REMEDIAL ACTIVITIES

On April 25 and 26, 2016, Antea Group directed the advancement of three soil borings that were completed as 2-inch diameter injection wells (IW-1 through IW-3) set to a depth of 20 feet below ground surface (bgs). These wells were installed in order to facilitate insitu-chemical oxidation events (ISCO). A water injection test was performed in well IW-3 on April 26, 2016. The approximate flow rate for IW-3 was 8.4 gallons per minute (gpm).

In addition, on April 26, 2016 a pre-injection groundwater monitoring event was conducted at the Site. Groundwater samples were collected from wells MW-1, MW-2, and MW-4. Historically, monitoring wells MW-2 and MW-4 have exhibited concentrations above the Ecology MTCA Method A cleanup levels. The injection wells were installed nearest these wells to help remediate contamination in this area. Analytical results are included in Tables 1 and 2.

On June 1 and June 2, 2016 Antea Group oversaw Regensis mix and prepare PlumeStop for application. Under Antea Group's supervision, Regensis injected 4,000 lbs. of PlumeStop into the subsurface in the vicinity of monitoring wells MW-2 and MW-4 via the three new injection wells (IW-1 through IW-3). The PlumeStop was mixed with 4,316 gallons of water in batches. In total, 4,795 gallons of solution were injected evenly into the three



new injection wells. The remedial activities performed during the second quarter were summarized in a report titled, "Well Installation, Water Injection Test, and Carbon Based Injection Report", dated December 6, 2016.

On March 20, 2017, Antea Group directed the installation of three groundwater monitoring wells (MW-7 through MW-9) that were completed as 2-inch diameter wells, screened at 5 to 25 foot intervals and set to a depth of 25 feet. These wells were installed in order to delineate the plume. The data collected from the well installations will be included in a Remedial Investigation (RI) report at a later date.

On May 30 and May 31, 2017, Antea Group directed the installation of three groundwater monitoring wells (MW-10 through MW-12) that were completed as 2-inch diameter wells, screened at 5 to 25 foot intervals and set to a depth of 26.5 feet. These wells were installed in order to delineate the plume. The data collected from the well installations will be included in a report at a later date. Due to the detected TPH-D concentrations in monitoring wells MW-9 through MW-12, Antea Group put together another work plan to install more wells.

On September 11, 2017 Antea Group directed the installation of two additional 2-inch diameter groundwater monitoring wells (MW-13 and MW-14). The locations of the wells are intended to complete the lateral delineation of groundwater on site and are included on Figure 2. The data collected from the well installation will be included in a report at a later date. Monitoring wells MW-13 and MW-14 were sampled during the third quarter event and did not exceed MTCA Method A cleanup levels. Analytical data can be found on Table 2 and Figure 3.

REMARKS

The information contained in this report represent Antea USA, Inc.'s professional opinions based upon the currently available information and are arrived at in accordance with currently accepted professional standards. This report is based upon a specific scope of work requested by the client. The contract between Antea USA, Inc. and its client outlines the scope of work, and only those tasks specifically authorized by that contract or outlined in this report were performed. This report is intended only for the use of Antea USA, Inc.'s client and anyone else specifically identified in writing by Antea USA, Inc. as a user of this report. Antea USA, Inc. will not and cannot be liable for unauthorized reliance by any other third party. Other than as contained in this paragraph, Antea USA, Inc. makes no express or implied warranty as to the contents of this report.

Antea Group appreciates the opportunity to provide environmental services to you. Please call Matthew Miller, Senior Project Manager, at 425-498-7722 if you have any questions regarding the contents of this letter.

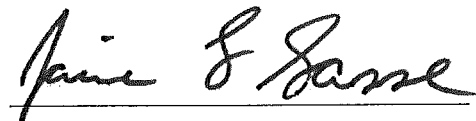
Prepared by:



Joseph Glover
Staff Professional

Date: January 30, 2018

Reviewed by:

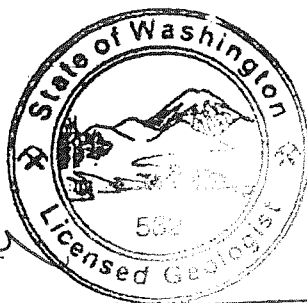


Jaime Sasse
Project Professional

Date: January 30, 2018



Matthew R. Miller, LG
Senior Project Manager



Matthew Miller

Date: January 30, 2018

- c.c. Toxics Cleanup Program, Washington State Department of Ecology Central Region (Hard Copy)
Mr. Nnamdi Madakor, PLIA, Olympia, Washington (Hard Copy)
Mr. Mark Newman, The Vertex Companies, Inc., Seattle, Washington (Electronic Copy)
Argo Pro /Colony Insurance, San Antonio, Texas (Electronic copy issued by Vertex)
Ms. Carrie Pederson, PLIA, Olympia, Washington (Electronic copy issued by Vertex)
File, Antea Group

Enclosures

Tables

Table 1	Groundwater Analytical Results – Natural Attenuation Parameters
Table 2	Groundwater Analytical Results and Groundwater Elevation Measurements
Table 3	Groundwater Analytical Results – Carcinogenic PAHs
Table 4	Groundwater Analytical Results – Non-Carcinogenic PAHs
Table 5	Groundwater Analytical Results – Fractional Analysis
Table 6	Groundwater Analytical Results – CENSUS, Bio-Trap Results

Figures

Figure 1	Site Location Map
Figure 2	Groundwater Elevation Contour Map
Figure 3	Groundwater Hydrocarbon Distribution Map

Appendix

Appendix A	Analytical Reports and Chain-of-Custody Documentation
------------	---

Tables

Table 1	Groundwater Analytical Results – Natural Attenuation Parameters
Table 2	Groundwater Analytical Results and Groundwater Elevation Measurements
Table 3	Groundwater Analytical Results – Carcinogenic PAHs
Table 4	Groundwater Analytical Results – Non-Carcinogenic PAHs
Table 5	Groundwater Analytical Results – Fractional Analysis
Table 6	Groundwater Analytical Results – CENSUS, Bio-Trap Results

TABLE 1
 GROUNDWATER ANALYTICAL RESULTS
 NATURAL ATTENUATION PARAMETERS
 LAKE CHELAN BIJAT COMPANY
 1418 WEST WOODIN AVENUE
 CHELAN, WASHINGTON

Sample I.D.	Date	Dissolved				pH (0 to 14 units)	ORP (mV)	TDS (g/L)	Conductivity (mS/cm ³)	Temp. (Celsius)	BOD (mg/L)	COD (mg/L)	Alkalinity			TOC (mg/L)	Methane (mg/L)	Nitrate (mg/L)	Sulfate (mg/L)	Iron (µg/L)	Dissolved		Carbon Dioxide (µg/L)
		Oxygen (mg/L)	CaCO3 (mg/L)	DOC (mg/L)	Iron (µg/L)								Manganese (µg/L)										
MW-1	03/04/13	1.25		0.8	1.18	14.1																	
MW-1	06/05/13	2.31		0.510	0.617	14.30																	
MW-1	09/09/13	3.10		0.516	0.666	16.04																	
MW-1	12/09/13	2.74		0.762	0.914	13.44																	
MW-1	03/05/14	1.07		0.825	0.825	11.38																	
MW-1	06/19/14	3.70		0.560	0.672	13.47																	
MW-1	09/20/14	1.91		0.666	0.898	18.47																	
MW-1	12/15/14	0.08		0.381	0.459	13.57																	
MW-1	03/17/15	3.58		2.42	3.79	13.04																	
MW-1	05/21/15	1.36		0.801	0.963	13.55																	
MW-1	06/22/15	0.77		0.582	0.733	15.54																	
MW-1	09/15/15	0.82		0.603	0.803	18.00																	
MW-1	12/30/15	1.92		1.727	2.099	13.99																	
MW-1	03/25/16	1.40		1.486	1.804	13.97																	
MW-1	04/26/16	1.20		0.817	0.974	13.22																	
MW-1	06/27/16	0.48		1.110	1.371	14.88																	
MW-1	09/25/16	1.04		0.893	0.890	17.02																	
MW-1	12/19/16	4.46		1.687	2.339	14.88																	
MW-1	03/14/17	0.93		1.420	1.699	13.44																	
MW-1	06/15/17	2.65		0.688	0.830	13.70																	
MW-2	03/04/13	1.69		0.8	1.18	14.0																	
MW-2	06/05/13	1.37		0.489	0.579	12.88																	
MW-2	09/09/13	0.78		0.566	0.697	14.56																	
MW-2	12/09/13	0.91		0.633	0.746	12.60																	
MW-2	03/05/14	1.21		0.718	0.815	11.28																	
MW-2	06/19/14	3.75		0.560	0.681	14.05																	
MW-2	09/20/14	1.90		0.478	0.611	16.15																	
MW-2	12/15/14	0.08		0.599	0.737	14.53																	
MW-2	03/17/15	0.59		1.42	2.22	12.98																	
MW-2	05/21/15																						
MW-2	06/22/15	0.91		0.351	0.425	13.84																	
MW-2	09/15/15	0.26		0.493	0.628	16.01																	
MW-2	12/30/15	0.30		1.315	1.597	13.97																	
MW-2	03/25/16	0.43		0.990	1.214	14.34																	
MW-2	04/26/16	1.65		0.837	1.089	16.11																	
MW-2	06/27/16	1.09		0.744	0.899	13.86																	
MW-2	09/25/16	0.40		0.548	0.709	16.89																	
MW-2	12/16/16	3.75		1.418	1.717	13.85																	

TABLE 1
GROUNDWATER ANALYTICAL RESULTS
NATURAL ATTENUATION PARAMETERS
LAKE CHELAN BOAT COMPANY
1418 WEST WOODIN AVENUE
CHELAN, WASHINGTON

Sample I.D.	Date	Dissolved				pH (0 to 14 units)	ORP (mV)	TDS (g/L)	Conductivity (mS/cm ³)	Temp. (Celsius)	BOD (mg/L)	COD (mg/L)	Alkalinity			TOC (mg/L)	Methane (mg/L)	Nitrate (mg/L)	Sulfate (mg/L)	Iron (µg/L)	Dissolved		Carbon Dioxide (µg/L)
		Oxygen (mg/L)	CaCO ₃ (mg/L)	DOC (mg/L)	Iron (µg/L)								Manganese (µg/L)										
MW-3	03/04/13	1.50	6.65	-88.0	0.8	1.250	13.5	--	--	--	--	--	--	--	--	--	--	--	--	--	--	--	--
MW-3	06/05/13	1.42	8.61	186.3	0.496	0.582	12.58	--	--	--	--	--	--	--	--	--	--	--	--	--	--	--	--
MW-3	09/09/13	1.40	10.30	257.1	0.405	0.499	14.58	--	--	--	--	--	--	--	--	--	--	--	--	--	--	--	--
MW-3	12/09/13	1.39	6.80	367.7	0.633	0.744	12.85	--	--	--	--	--	--	--	--	--	--	--	--	--	--	--	--
MW-3	03/05/14	0.60	6.53	-41.3	0.707	0.817	11.97	--	--	--	--	--	--	--	--	--	--	--	--	--	--	--	--
MW-3	06/19/14	3.37	7.25	81.3	0.497	0.594	13.30	--	--	--	--	--	--	--	--	--	--	--	--	--	--	--	--
MW-3	09/20/14	5.60	6.89	9.6	0.441	0.572	16.80	--	--	--	--	--	--	--	--	--	--	--	--	--	--	--	--
MW-3	12/15/14	0.13	6.77	-43.0	0.641	0.765	13.30	--	--	--	--	--	--	--	--	--	--	--	--	--	--	--	--
MW-3	03/17/15	2.44	6.48	291	1.71	2.68	12.03	--	--	--	--	--	--	--	--	--	--	--	--	--	--	--	--
MW-3	05/21/15	2.39	6.80	-50.3	0.843	0.989	12.56	--	--	--	--	--	--	--	--	--	--	--	--	--	--	--	--
MW-3	06/22/15	2.80	5.84	304.8	0.403	0.488	13.68	--	--	--	--	--	--	--	--	--	--	--	--	--	--	--	71,000
MW-3	09/15/15	1.39	6.91	17.7	0.428	0.573	18.24	--	--	--	--	--	--	--	--	--	--	--	--	--	--	--	--
MW-3	12/30/15	4.26	6.67	93.8	1.524	1.849	13.95	--	--	--	--	--	--	--	--	--	--	--	--	--	--	--	--
MW-3	03/25/16	0.80	6.81	66.9	0.787	0.923	12.57	--	--	--	--	--	--	--	--	--	--	--	--	--	--	--	--
MW-3	06/27/16	0.52	8.23	326.2	0.870	1.059	14.03	--	--	--	--	--	--	--	--	--	--	--	--	--	--	--	--
MW-4	03/04/13	1.66	6.8	38	0.9	1.34	14.8	--	--	--	--	--	--	--	--	--	--	--	--	--	--	--	--
MW-4	06/05/13	3.27	--	310.0	0.746	0.914	14.30	--	--	--	--	--	--	--	--	--	--	--	--	--	--	--	--
MW-4	09/09/13	0.56	10.66	222.4	0.596	0.765	16.47	--	--	--	--	--	--	--	--	--	--	--	--	--	--	--	--
MW-4	12/09/13	1.32	6.71	426.4	0.747	0.912	14.15	--	--	--	--	--	--	--	--	--	--	--	--	--	--	--	--
MW-4	03/05/14	1.33	6.64	266.8	0.755	0.881	12.24	--	--	--	--	--	--	--	--	--	--	--	--	--	--	--	--
MW-4	06/19/14	4.80	6.27	146.9	0.946	1.052	14.96	--	--	--	--	--	--	--	--	--	--	--	--	--	--	--	--
MW-4	09/20/14	1.10	6.87	122.8	0.830	1.119	18.52	--	--	--	--	--	--	--	--	--	--	--	--	--	--	--	--
MW-4	12/15/14	0.02	6.55	-35.0	0.826	1.032	15.12	--	--	--	--	--	--	--	--	--	--	--	--	--	--	--	--
MW-4	03/17/15	0.62	6.39	296	1.98	3.09	13.48	--	--	--	--	--	--	--	--	--	--	--	--	--	--	--	--
MW-4	05/21/15	0.52	6.62	-23.4	1.054	1.281	14.03	--	--	--	--	--	--	--	--	--	--	--	--	--	--	--	--
MW-4	06/22/15	0.81	6.56	270.1	0.761	0.964	15.78	--	--	--	--	--	--	--	--	--	--	--	--	--	--	--	97,000
MW-4	09/15/15	0.43	6.60	44.8	0.807	1.111	19.51	--	--	--	--	--	--	--	--	--	--	--	--	--	--	--	--
MW-4	12/30/15	0.43	6.70	48.9	1.912	2.368	14.78	--	--	--	--	--	--	--	--	--	--	--	--	--	--	--	--
MW-4	03/25/16	2.10	6.70	30.2	0.993	1.231	14.82	--	--	--	--	--	--	--	--	--	--	--	--	--	--	--	--
MW-4	04/26/16	3.61	7.28	94.2	0.810	0.975	13.82	--	--	--	--	--	--	--	--	--	--	--	--	--	--	--	--
MW-4	06/27/16	0.23	8.39	306.2	1.359	1.764	16.80	--	--	--	--	--	--	--	--	--	--	--	--	--	--	--	--
MW-4	09/29/16	0.19	7.42	86.6	0.782	1.038	17.81	--	--	--	--	--	--	--	--	--	--	--	--	--	--	--	--
MW-4	12/19/16	1.51	6.33	154.7	1.795	2.239	15.09	--	--	--	--	--	--	--	--	--	--	--	--	--	--	--	--
MW-4	03/14/17	1.25	6.66	93.2	1.011	1.225	13.90	--	--	--	--	--	--	--	--	--	--	--	--	--	--	--	--
MW-4	06/15/17	4.98	6.32	228.9	0.720	0.874	13.95	--	--	--	--	--	--	--	--	--	--	--	--	--	--	--	--
MW-5	09/15/15	0.80	6.97	-69.9	0.984	1.266	16.46	--	--	--	--	--	--	--	--	--	--	--	--	--	--	--	--
MW-5	12/30/15	1.10	6.83	61.8	1.452	2.937	13.46	--	--	--	--	--	--	--	--	--	--	--	--	--	--	--	--
MW-5	03/25/16	2.00	6.91	44.8	0.937	1.132	13.74	--	--	--	--	--	--	--	--	--	--	--	--	--	--	--	--
MW-5	06/27/16	2.60	8.45	304.5	2.189	2.793	16.08	--	--	--	--	--	--	--	--	--	--	--	--	--	--	--	--

TABLE 1
 GROUNDWATER ANALYTICAL RESULTS
 NATURAL ATTENUATION PARAMETERS
 LAKE CHELAN BOJAT COMPANY
 1418 WEST WOODIN AVENUE
 CHELAN, WASHINGTON

Sample I.D.	Date	Dissolved										Alkalinity										Dissolved										Carbon Dioxide (µg/L)
		Oxygen (mg/L)	pH (0 to 14 units)	ORP (mV)	TDS (g/L)	Conductivity (mS/cm ³)	Temp. (Celsius)	BOD (mg/L)	COD (mg/L)	CaCO ₃ (mg/L)	DOC (mg/L)	TOC (mg/L)	Methane (mg/L)	Nitrate (mg/L)	Sulfate (mg/L)	Iron (µg/L)	Iron (µg/L)	Manganese (µg/L)	Manganese (µg/L)	Disolved Manganese (µg/L)												
MW-6	09/15/15	0.88	7.22	-108.2	0.800	1.098	16.71	--	--	--	--	--	--	--	--	--	--	--	--	--												
MW-6	12/30/15	0.45	6.90	66.8	1.569	1.907	14.32	--	--	--	--	--	--	--	--	--	--	--	--	--												
MW-6	09/25/16	4.11	6.92	31.6	0.995	1.217	14.26	--	--	--	--	--	--	--	--	--	--	--	--	--												
MW-6	06/27/16	0.17	8.42	291.3	2.319	2.887	15.03	--	--	--	--	--	--	--	--	--	--	--	--	--												
MW-7	09/27/17	1.06	6.10	94.2	1.106	1.323	13.36	--	--	--	--	--	--	--	--	--	--	--	--	--												
MW-7	06/15/17	3.53	6.70	143.0	0.518	0.612	12.82	--	--	--	--	--	--	--	--	--	--	--	--	--												
MW-7	09/19/17	1.51	6.50	49.0	0.566	0.884	19.24	--	--	--	--	--	--	--	--	--	--	--	--	--												
MW-7	12/11/17	1.87	5.73	348	0.760	1.19	14.16	--	--	--	--	--	--	--	--	--	--	--	--	--												
MW-8	09/27/17	1.61	5.77	172.4	1.014	1.214	13.39	--	--	--	--	--	--	--	--	--	--	--	--	--												
MW-8	06/15/17	2.08	6.69	168.6	0.831	0.989	13.13	--	--	--	--	--	--	--	--	--	--	--	--	--												
MW-9	09/27/17	0.36	6.67	32.6	0.642	0.779	13.89	--	--	--	--	--	--	--	--	--	--	--	--	--												
MW-9	06/15/17	0.36	7.35	-105.7	0.466	0.547	12.82	--	--	--	--	--	--	--	--	--	--	--	--	--												
MW-9	09/19/17	1.32	6.52	32.0	0.584	0.913	18.40	--	--	--	--	--	--	--	--	--	--	--	--	--												
MW-9	12/11/17	1.08	5.70	351	0.704	1.10	13.40	--	--	--	--	--	--	--	--	--	--	--	--	--												
MW-10	06/15/17	0.38	7.65	-51.5	0.198	0.235	13.01	--	--	--	--	--	--	--	--	--	--	--	--	--												
MW-10	09/19/17	1.28	6.95	79.0	0.340	0.531	17.44	--	--	--	--	--	--	--	--	--	--	--	--	--												
MW-10	12/11/17	0.87	5.86	278	0.522	0.816	13.00	--	--	--	--	--	--	--	--	--	--	--	--	--												
MW-11	06/15/17	1.11	6.94	-74.4	0.423	0.504	13.24	--	--	--	--	--	--	--	--	--	--	--	--	--												
MW-11	09/19/17	0.77	6.62	56.0	0.414	0.647	18.42	--	--	--	--	--	--	--	--	--	--	--	--	--												
MW-11	12/11/17	0.79	5.72	245	0.655	1.02	13.49	--	--	--	--	--	--	--	--	--	--	--	--	--												
MW-12	06/15/17	2.00	6.86	-57.9	0.578	0.699	13.83	--	--	--	--	--	--	--	--	--	--	--	--	--												
MW-12	09/19/17	0.80	6.35	52.0	0.672	1.050	19.70	--	--	--	--	--	--	--	--	--	--	--	--	--												
MW-12	12/11/17	0.64	5.55	206	0.795	1.24	14.66	--	--	--	--	--	--	--	--	--	--	--	--	--												
MW-13	09/19/17	0.97	6.79	173.0	0.382	0.597	17.27	--	--	--	--	--	--	--	--	--	--	--	--	--												
MW-13	12/11/17	0.96	5.79	339	0.486	0.760	12.19	--	--	--	--	--	--	--	--	--	--	--	--	--												
MW-14	09/19/17	2.17	6.70	215.0	0.458	0.715	18.23	--	--	--	--	--	--	--	--	--	--	--	--	--												
MW-14	12/11/17	3.43	5.96	175	0.572	0.894	12.57	--	--	--	--	--	--	--	--	--	--	--	--	--												

TABLE 1
 GROUNDWATER ANALYTICAL RESULTS
 NATURAL ATTENUATION PARAMETERS
 LAKE CHELAN BOAT COMPANY
 1418 WEST WOODIN AVENUE
 CHELAN, WASHINGTON

Sample I.D.	Date	Dissolved Oxygen (mg/L)	pH (0 to 14 units)	ORP (mV)	TDS (g/L)	Conductivity (mS/cm ³)	Temp. (Celsius)	BOD (mg/L)	COD (mg/L)	Alkalinity CaCO ₃ (mg/L)	DOC (mg/L)	TOC (mg/L)	Methane (mg/L)	Nitrate (mg/L)	Sulfate (mg/L)	Iron (µg/L)	Dissolved Iron (µg/L)	Dissolved Manganese (µg/L)	Carbon Dioxide (µg/L)
<p>Notes:</p> <p>ORP= oxygen reduction potential</p> <p>TDS= total dissolved solids</p> <p>Dissolved Oxygen, pH, ORP, TDS, Conductivity and Temperature measurements taken with a Y-SI 556 water quality field instrument</p> <p>BOD= biochemical oxygen demand</p> <p>BOD analysis by Method SM5210B</p> <p>Alkalinity analysis by Method SM2320f</p> <p>DOC= dissolved organic carbon</p> <p>DOC analysis by Method EPA-415.1</p> <p>TOC= total organic carbon</p> <p>TOC analysis by Method SM5310C</p> <p>Methane analysis by Method RSK-175</p> <p>Nitrate and sulfate analysis by Method EPA-300.0</p> <p>Iron, dissolved iron, manganese, and dissolved manganese analysis by Method EPA-200.8</p> <p>Carbon dioxide analysis by method RSK-175M</p>																			

GROUNDWATER ANALYTICAL RESULTS AND GROUNDWATER ELEVATION MEASUREMENTS

LAKE CHELAN BOAT COMPANY
1418 WEST WOODIN AVENUE
CHELAN, WASHINGTON

Sample ID	Date Sampled	TPH Diesel (µg/L)	TPH Oil (µg/L)	Benzene (µg/L)	Toluene (µg/L)	Ethylbenzene (µg/L)	Xylenes (µg/L)	MTBE (µg/L)	Lead (µg/L)	TOC (feet)	DTW (feet)	SPH Thickness (feet)	GWE (feet)
MW-1	03/21/12	<130	<250	<1.0	<1.0	<1.0	<3.0	--	--	99.50	19.63	0.00	79.87
MW-1	06/21/12	<130	<250	<1.0	<1.0	<1.0	<3.0	--	--	99.50	9.75	0.00	89.75
MW-1	09/17/12	<130	<250	<1.0	<1.0	<1.0	<3.0	<3.0	--	99.50	7.86	0.00	91.64
MW-1	12/10/12	<130	<250	<1.0	<1.0	<1.0	<3.0	--	--	99.50	12.85	0.00	86.65
MW-1	03/04/13	<130	<250	<1.0	<1.0	<1.0	<3.0	--	--	99.50	19.89	0.00	79.61
MW-1	06/05/13	150	<250	<1.0	<1.0	<1.0	<3.0	--	--	99.50	10.82	0.00	88.68
MW-1	09/09/13	<130	<250	<1.0	<1.0	<1.0	<3.0	--	--	99.50	6.99	0.00	92.51
MW-1	12/09/13	<130	<250	<1.0	<1.0	<1.0	<3.0	--	--	99.50	15.46	0.00	84.04
MW-1	03/05/14	<130	<250	<1.0	<1.0	<1.0	<3.0	--	--	99.50	20.00	0.00	79.50
MW-1	06/19/14	<130	<250	--	<1.0	<1.0	<3.0	--	--	99.50	8.75	0.00	90.75
MW-1	09/20/14	<130	<250	<1.0	<1.0	<1.0	<3.0	--	--	99.50	7.97	0.00	91.53
MW-1	12/15/14	150	<250	<1.0	<1.0	<1.0	<3.0	--	--	99.50	12.00	0.00	87.50
MW-1	05/21/15	--	--	--	--	--	--	--	--	99.50	11.22	0.00	88.28
MW-1	06/22/15	230	<250	<1.0	<1.0	<1.0	<3.0	--	--	99.50	6.60	0.00	92.90
MW-1	09/15/15	<130	<250	<1.0	<1.0	<1.0	<3.0	--	--	99.50	7.80	0.00	91.70
MW-1	12/30/15	<130	<250	<1.0	<1.0	<1.0	<3.0	--	--	99.50	12.95	0.00	86.55
MW-1	03/25/16	<130	<250	<1.0	<1.0	<1.0	<3.0	--	--	99.50	18.21	0.00	81.29
MW-1	04/26/16	130	<250	<1.0	<1.0	<1.0	<3.0	--	--	99.50	11.93	0.00	87.57
MW-1	06/27/16	520	<250	<1.0	<1.0	<1.0	<3.0	--	--	99.50	6.65	0.00	92.85
MW-1	09/25/16	140	<250	<1.0	<1.0	<1.0	<3.0	--	<1.0	99.50	8.12	0.00	91.38
MW-1	12/19/16	<130	<250	<1.0	<1.0	<1.0	<3.0	--	<1.0	99.50	12.31	0.00	87.19
MW-1	03/14/17	<130	<250	<1.0	<1.0	<1.0	<3.0	--	--	99.50	20.34	0.00	79.16
MW-1	06/15/17	170	<250	<1.0	<1.0	<1.0	<3.0	--	--	99.50	8.40	0.00	91.10
MW-1	09/19/17	--	--	--	--	--	--	--	--	99.50	7.84	0.00	91.66
MW-1	12/11/17	--	--	--	--	--	--	--	--	99.50	13.14	0.00	86.36

TABLE 2
GROUNDWATER ANALYTICAL RESULTS AND GROUNDWATER ELEVATION MEASUREMENTS
 LAKE CHELAN BOAT COMPANY
 1418 WEST WOODIN AVENUE
 CHELAN, WASHINGTON

Sample ID	Date Sampled	TPH Diesel (µg/L)	TPH Oil (µg/L)	Benzene (µg/L)	Toluene (µg/L)	Ethyl-benzene (µg/L)	Xylenes (µg/L)	MTBE (µg/L)	Lead (µg/L)	TOC (feet)	DTW (feet)	SPH Thickness (feet)	GWE (feet)
MW-2	03/21/12	260	<250	<1.0	<1.0	<1.0	<3.0	--	--	99.22	19.38	0.00	79.84
MW-2	06/21/12	300	<250	<1.0	<1.0	<1.0	<3.0	--	--	99.22	9.84	0.00	89.38
MW-2	09/17/12	270	<250	<1.0	<1.0	<1.0	<3.0	<3.0	--	99.22	8.54	0.00	90.68
MW-2	12/10/12	310	<250	<1.0	<1.0	<1.0	<3.0	--	--	99.22	13.15	0.00	86.07
MW-2	03/04/13	<130	280	<1.0	<1.0	<1.0	<3.0	--	--	99.22	20.02	0.00	79.20
MW-2	06/05/13	280	<250	<1.0	<1.0	<1.0	<3.0	--	--	99.22	10.90	0.00	88.32
MW-2	09/09/13	<130	<250	<1.0	<1.0	<1.0	<3.0	--	--	99.22	7.10	0.00	92.12
MW-2	12/09/13	140	<250	<1.0	<1.0	<1.0	<3.0	--	--	99.22	15.62	0.00	83.60
MW-2	06/19/14	<130	<250	<1.0	<1.0	<1.0	<3.0	--	--	99.22	8.83	0.00	90.39
MW-2	09/20/14	460	<250	<1.0	<1.0	<1.0	<3.0	--	--	99.22	8.10	0.00	91.12
MW-2	12/15/14	420	<250	<1.0	<1.0	<1.0	<3.0	--	--	99.22	12.12	0.00	87.10
MW-2	03/17/15	430	<250	<1.0	<1.0	<1.0	<3.0	--	--	99.22	14.49	0.00	84.73
MW-2	05/21/15	--	--	--	--	--	--	--	--	99.22	11.26	0.00	87.96
MW-2	06/22/15	140	<250	<1.0	<1.0	<1.0	<3.0	--	--	99.22	6.73	0.00	92.49
MW-2	09/15/15	290	<250	<1.0	<1.0	<1.0	<3.0	--	--	99.22	7.91	0.00	91.31
MW-2	12/30/15	660	<250	<1.0	<1.0	<1.0	<3.0	--	--	99.22	13.11	0.00	86.11
MW-2	03/25/16	740	<250	<1.0	<1.0	<1.0	<3.0	--	--	99.22	18.35	0.00	80.87
MW-2	04/26/16	410	<250	<1.0	<1.0	<1.0	<3.0	--	--	99.22	12.00	0.00	87.22
MW-2	06/27/16	210	<250	<1.0	<1.0	<1.0	<3.0	--	--	99.22	6.77	0.00	92.45
MW-2	09/25/16	<130	<250	<1.0	<1.0	<1.0	<3.0	--	<1.0	99.22	8.25	0.00	90.97
MW-2	12/19/16	400	<250	<1.0	<1.0	<1.0	<3.0	--	<1.0	99.22	12.42	0.00	86.80
MW-2	03/14/17	--	--	--	--	--	--	--	--	99.22	20.46	0.00	78.76
MW-2	06/15/17	--	--	--	--	--	--	--	--	99.22	8.50	0.00	90.72
MW-2	09/19/17	--	--	--	--	--	--	--	--	99.22	7.92	0.00	91.30
MW-2	12/11/17	--	--	--	--	--	--	--	--	99.22	13.26	0.00	85.96

TA. 2
GROUNDWATER ANALYTICAL RESULTS AND GROUNDWATER ELEVATION MEASUREMENTS
 LAKE CHELAN BOAT COMPANY
 1418 WEST WOODIN AVENUE
 CHELAN, WASHINGTON

Sample ID	Date Sampled	TPH Diesel (µg/L)	TPH Oil (µg/L)	Benzene (µg/L)	Toluene (µg/L)	Ethyl-benzene (µg/L)	Xylenes (µg/L)	MTBE (µg/L)	Lead (µg/L)	TOC (feet)	DTW (feet)	SPH Thickness (feet)	GWE (feet)
MW-3	03/21/12	1,300	<250	<1.0	<1.0	9.3	44	--	--	100.00	20.10	0.00	79.90
MW-3	06/21/12	1,100	<250	<1.0	<1.0	<1.0	<3.0	--	--	100.00	8.15	0.00	91.85
MW-3	09/17/12	340	<250	<1.0	<1.0	<1.0	3.3	<3.0	--	100.00	6.41	0.00	93.59
MW-3	12/10/12	140	<250	<1.0	<1.0	<1.0	<3.0	--	--	100.00	11.30	0.00	88.70
MW-3	06/05/13	620	<250	<1.0	<1.0	<1.0	<3.0	--	--	100.00	9.25	0.00	90.75
MW-3	09/09/13	<130	<250	<1.0	<1.0	<1.0	<3.0	--	--	100.00	5.38	0.00	94.62
MW-3	12/09/13	190	<250	<1.0	<1.0	<1.0	<3.0	--	--	100.00	13.92	0.00	86.08
MW-3	03/05/14	1,900	<250	<1.0	<1.0	<1.0	<3.0	--	--	100.00	18.45	0.00	81.55
MW-3	06/19/14	180	<250	<1.0	<1.0	<1.0	<3.0	--	--	100.00	7.20	0.00	92.80
MW-3	09/20/14	<130	<250	<1.0	<1.0	<1.0	<3.0	--	--	100.00	6.41	0.00	93.59
MW-3	12/15/14	140	<250	<1.0	<1.0	<1.0	<3.0	--	--	100.00	10.45	0.00	89.55
MW-3	03/17/15	250	<250	<1.0	<1.0	<1.0	<3.0	--	--	100.00	12.81	0.00	87.19
MW-3	05/21/15	--	--	--	--	--	--	--	--	100.00	9.63	0.00	90.37
MW-3	06/22/15	<130	<250	<1.0	<1.0	<1.0	<3.0	--	--	100.00	5.04	0.00	94.96
MW-3	09/15/15	<130	<250	<1.0	<1.0	<1.0	<3.0	--	--	100.00	6.26	0.00	93.74
MW-3	12/30/15	<130	<250	<1.0	<1.0	<1.0	<3.0	--	--	100.00	11.41	0.00	88.59
MW-3	03/25/16	430	<250	<1.0	<1.0	<1.0	<3.0	--	--	100.00	16.65	0.00	83.35
MW-3	04/26/16	--	--	--	--	--	--	--	--	100.00	10.35	0.00	89.65
MW-3	06/27/16	400	<250	<1.0	<1.0	<1.0	<3.0	--	--	100.00	5.08	0.00	94.92
MW-3	09/25/16	--	--	--	--	--	--	--	--	100.00	6.56	0.00	93.44
MW-3	12/19/16	--	--	--	--	--	--	--	--	100.00	10.72	0.00	89.28
MW-3	03/14/17	--	--	--	--	--	--	--	--	100.00	18.77	0.00	81.23
MW-3	06/15/17	--	--	--	--	--	--	--	--	100.00	6.85	0.00	93.15
MW-3	09/19/07	--	--	--	--	--	--	--	--	100.00	6.28	0.00	93.72
MW-3	12/11/17	--	--	--	--	--	--	--	--	100.00	11.58	0.00	88.42

TABLE 2
GROUNDWATER ANALYTICAL RESULTS AND GROUNDWATER ELEVATION MEASUREMENTS
 LAKE CHELAN BOAT COMPANY
 1418 WEST WOODIN AVENUE
 CHELAN, WASHINGTON

Sample ID	Date Sampled	TPH Diesel (µg/L)	TPH Oil (µg/L)	Benzene (µg/L)	Toluene (µg/L)	Ethyl-benzene (µg/L)	Xylenes (µg/L)	MTBE (µg/L)	Lead (µg/L)	TOC (feet)	DTW (feet)	SPH Thickness (feet)	GWE (feet)
MW-4	06/21/12	880	<250	<1.0	<1.0	<1.0	<3.0	--	--	102.25	10.40	0.00	91.85
MW-4	09/17/12	1,800	<250	<1.0	<1.0	<1.0	<3.0	<3.0	--	102.25	8.00	0.00	94.25
MW-4	12/10/12	390	<250	<1.0	<1.0	<1.0	<3.0	--	--	102.25	13.45	0.00	88.80
MW-4	03/04/13	160	<250	<1.0	<1.0	<1.0	<3.0	--	--	102.25	23.72	0.00	78.53
MW-4	06/05/13	2,900	520	<1.0	<1.0	<1.0	<3.0	--	--	102.25	11.48	0.00	90.77
MW-4	09/09/13	1,300	260	<1.0	<1.0	<1.0	<3.0	--	--	102.25	7.62	0.00	94.63
MW-4	12/09/13	190	<250	<1.0	<1.0	<1.0	<3.0	--	--	102.25	16.09	0.00	86.16
MW-4	03/05/14	<130	<250	<1.0	<1.0	<1.0	<3.0	--	--	102.25	20.61	0.00	81.64
MW-4	06/19/14	580	<250	<1.0	<1.0	<1.0	<3.0	--	--	102.25	10.42	0.00	91.83
MW-4	09/20/14	1,800	<250	<1.0	<1.0	<1.0	<3.0	--	--	102.25	8.61	0.00	93.64
MW-4	12/15/14	2,000	<250	<1.0	<1.0	<1.0	<3.0	--	--	102.25	12.64	0.00	89.61
MW-4	03/17/15	620	<250	<1.0	<1.0	<1.0	<3.0	--	--	102.25	15.00	0.00	87.25
MW-4	05/21/15	--	--	--	--	--	--	--	--	102.25	11.89	0.00	90.36
MW-4	06/22/15	1,800	410	<1.0	<1.0	<1.0	<3.0	--	--	102.25	7.25	0.00	95.00
MW-4	09/15/15	2,300	<250	<1.0	<1.0	<1.0	<3.0	--	--	102.25	8.45	0.00	93.80
MW-4	12/30/15	960	<250	<1.0	<1.0	<1.0	<3.0	--	--	102.25	13.60	0.00	88.65
MW-4	03/25/16	250	<250	<1.0	<1.0	<1.0	<3.0	--	--	102.25	18.84	0.00	83.41
MW-4	04/26/16	630	<250	<1.0	<1.0	<1.0	<3.0	--	--	102.25	12.65	0.00	89.60
MW-4	06/27/16	1,500	<250	<1.0	<1.0	<1.0	<3.0	--	--	102.25	7.30	0.00	94.95
MW-4	09/25/16	330	<250	<1.0	<1.0	<1.0	<3.0	--	--	102.25	8.76	0.00	93.49
MW-4	12/19/16	<130	<250	<1.0	<1.0	<1.0	<3.0	--	<1.0	102.25	12.93	0.00	89.32
MW-4	03/14/17	<130	<250	<1.0	<1.0	<1.0	<3.0	--	<1.0	102.25	20.98	0.00	81.27
MW-4	06/15/17	<130	<250	<1.0	<1.0	<1.0	<3.0	--	--	102.25	9.05	0.00	93.20
MW-4	09/19/17	--	--	--	--	--	--	--	--	102.25	8.47	0.00	93.78
MW-4	12/11/17	--	--	--	--	--	--	--	--	102.25	13.76	0.00	88.49

TA. .2
GROUNDWATER ANALYTICAL RESULTS AND GROUNDWATER ELEVATION MEASUREMENTS
 LAKE CHELAN BOAT COMPANY
 1418 WEST WOODIN AVENUE
 CHELAN, WASHINGTON

Sample ID	Date Sampled	TPH Diesel (µg/L)	TPH Oil (µg/L)	Benzene (µg/L)	Toluene (µg/L)	Ethyl-benzene (µg/L)	Xylenes (µg/L)	MTBE (µg/L)	Lead (µg/L)	TOC (feet)	DTW (feet)	SPH Thickness (feet)	GWE (feet)
MW-5	09/15/15	<130	<250	<1.0	<1.0	<1.0	<3.0	--	--	102.29	8.51	0.00	93.78
MW-5	12/30/15	<130	<250	<1.0	<1.0	<1.0	<3.0	--	--	102.29	13.64	0.00	88.65
MW-5	03/25/16	<130	<250	<1.0	<1.0	<1.0	<3.0	--	--	102.29	18.87	0.00	83.42
MW-5	04/26/16	--	--	--	--	--	--	--	--	102.29	12.84	0.00	89.45
MW-5	06/27/16	<130	<250	<1.0	<1.0	<1.0	<3.0	--	--	102.29	7.35	0.00	94.94
MW-5	09/25/16	--	--	--	--	--	--	--	--	102.29	8.82	0.00	93.47
MW-5	12/19/16	--	--	--	--	--	--	--	--	102.29	12.94	0.00	89.35
MW-5	03/14/17	--	--	--	--	--	--	--	--	102.29	21.03	0.00	81.26
MW-5	06/15/17	--	--	--	--	--	--	--	--	102.29	9.12	0.00	93.17
MW-5	09/19/17	--	--	--	--	--	--	--	--	102.29	8.50	0.00	93.79
MW-5	12/11/17	--	--	--	--	--	--	--	--	102.29	13.80	0.00	88.49
MW-6	09/15/15	<130	<250	<1.0	<1.0	<1.0	<3.0	--	--	106.73	12.89	0.00	93.84
MW-6	12/30/15	<130	<250	<1.0	<1.0	<1.0	<3.0	--	--	106.73	18.06	0.00	88.67
MW-6	03/25/16	<130	<250	<1.0	<1.0	<1.0	<3.0	--	--	106.73	23.32	0.00	83.41
MW-6	04/26/16	--	--	--	--	--	--	--	--	106.73	17.30	0.00	89.43
MW-6	06/27/16	170	<250	<1.0	<1.0	<1.0	<3.0	--	--	106.73	11.80	0.00	94.93
MW-6	09/25/16	--	--	--	--	--	--	--	--	106.73	13.23	0.00	93.50
MW-6	12/19/16	--	--	--	--	--	--	--	--	106.73	17.37	0.00	89.36
MW-6	03/14/17	--	--	--	--	--	--	--	--	106.73	25.46	0.00	81.27
MW-6	06/15/17	--	--	--	--	--	--	--	--	106.73	13.58	0.00	93.15
MW-6	09/19/17	--	--	--	--	--	--	--	--	106.73	12.94	0.00	93.79
MW-6	12/11/17	--	--	--	--	--	--	--	--	106.73	18.24	0.00	88.49
MW-7	03/27/17	200	<250	<1.0	<1.0	<1.0	<3.0	--	--	98.73	19.59	0.00	79.14
MW-7	06/15/17	<130	<250	<1.0	<1.0	<1.0	<3.0	--	--	98.73	8.00	0.00	90.73
MW-7	09/19/17	190	<250	<1.0	<1.0	<1.0	<3.0	--	--	98.73	7.48	0.00	91.25
MW-7	12/11/17	260	<250	<1.0	<1.0	<1.0	<3.0	--	--	98.73	12.76	0.00	85.97

TABLE 2
GROUNDWATER ANALYTICAL RESULTS AND GROUNDWATER ELEVATION MEASUREMENTS
 LAKE CHELAN BOAT COMPANY
 1418 WEST WOODIN AVENUE
 CHELAN, WASHINGTON

Sample ID	Date Sampled	TPH Diesel (µg/L)	TPH Oil (µg/L)	Benzene (µg/L)	Toluene (µg/L)	Ethyl-benzene (µg/L)	Xylenes (µg/L)	MTBE (µg/L)	Lead (µg/L)	TOC (feet)	DTW (feet)	SPH Thickness (feet)	GWE (feet)
MW-8	03/27/17	<130	<250	<1.0	<1.0	<1.0	<3.0	--	--	99.02	19.77	0.00	79.25
MW-8	06/15/17	<130	<250	<1.0	<1.0	<1.0	<3.0	--	--	99.02	8.21	0.00	90.81
MW-8	09/19/17	--	--	--	--	--	--	--	--	99.02	7.66	0.00	91.36
MW-8	12/11/17	--	--	--	--	--	--	--	--	99.02	12.94	0.00	86.08
MW-9	03/27/17	1,300	<250	<1.0	<1.0	8.6	23	--	--	99.55	17.94	0.00	81.61
MW-9	06/15/17	2,500	<250	<1.0	2.9	27	69	--	--	99.55	6.41	0.00	93.14
MW-9	09/19/17	980	<250	<1.0	<1.0	7.0	4.0	--	--	99.55	5.81	0.00	93.74
MW-9	12/11/17	620	<250	<1.0	<1.0	<1.0	<3.0	--	--	99.55	11.12	0.00	88.43
MW-10	06/15/17	3,300	<250	<1.0	2.6	4.4	9.8	--	--	96.98	3.89	0.00	93.09
MW-10	09/19/17	1,100	<250	<1.0	<1.0	<1.0	<3.0	--	--	96.98	3.38	0.00	93.60
MW-10	12/11/17	940	<250	<1.0	<1.0	1.2	5.2	--	--	96.98	8.66	0.00	88.32
MW-11	06/15/17	2,600	<250	<1.0	2.3	2.9	9.9	--	--	98.60	5.25	0.00	93.35
MW-11	09/19/17	660	<250	<1.0	<1.0	<1.0	<3.0	--	--	98.60	4.70	0.00	93.90
MW-11	12/11/17	840	<250	<1.0	<1.0	<1.0	4.2	--	--	98.60	9.99	0.00	88.61
MW-12	06/15/17	2,100	<250	<1.0	2.4	11	67	--	--	101.12	8.05	0.00	93.07
MW-12	09/19/17	2,300	<250	<1.0	<1.0	1.9	5.5	--	--	101.12	7.49	0.00	93.63
MW-12	12/11/17	1,200	<250	<1.0	<1.0	<1.0	4.0	--	--	101.12	12.80	0.00	88.32
MW-13	09/19/17	190	260	<1.0	<1.0	<1.0	<3.0	--	--	95.84	2.39	0.00	93.45
MW-13	12/11/17	<130	<250	<1.0	<1.0	<1.0	<3.0	--	--	95.84	7.64	0.00	88.20
MW-14	09/19/17	<130	<250	<1.0	<1.0	<1.0	<3.0	--	--	96.52	3.01	0.00	93.51
MW-14	12/11/17	<130	<250	<1.0	<1.0	<1.0	<3.0	--	--	96.52	8.31	0.00	88.21

GROUNDWATER ANALYTICAL RESULTS AND GROUNDWATER ELEVATION MEASUREMENTS
 LAKE CHELAN BOAT COMPANY
 1418 WEST WOODIN AVENUE
 CHELAN, WASHINGTON

Sample ID	Date Sampled	TPH Diesel (µg/L)	TPH Oil (µg/L)	Benzene (µg/L)	Toluene (µg/L)	Ethylbenzene (µg/L)	Xylenes (µg/L)	MTBE (µg/L)	Lead (µg/L)	TOC (feet)	DTW (feet)	SPH Thickness (feet)	GWE (feet)
Trip Blank-1	03/27/17	--	--	<1.0	<1.0	<1.0	<3.0	--	--	--	--	--	--
Trip Blank-1	06/15/17	--	--	<1.0	<1.0	<1.0	<3.0	--	--	--	--	--	--
Trip Blank-1	09/19/17	--	--	<1.0	<1.0	<1.0	<3.0	--	--	--	--	--	--
Trip Blank-1	12/11/17	--	--	<1.0	<1.0	<1.0	<3.0	--	--	--	--	--	--
MTCA Method A Cleanup Levels:		500	500	5	1,000	700	1,000	20	20	-	-	-	-

Notes:

- µg/L= micrograms per liter
- < = Less than reporting limit
- TOC - Top of casing elevation (feet)
- DTW - Depth to groundwater (feet)
- SPH Thickness - Separate-phase hydrocarbon thickness (feet)
- GWE - Groundwater table elevation (feet)
- TPH = Total petroleum hydrocarbons
- MTBE = Methyl t-butyl ether
- TPH as diesel and oil by Method NWTPH-Dx
- BTEX - Analysis by EPA Method 8021
- MTBE - Analysis by EPA Method 8021

TABLE 3
GROUNDWATER ANALYTICAL RESULTS - CARCINOGENIC PAHS
LAKE CHELAN BOAT COMPANY
1418 WEST WOODIN AVENUE
CHELAN, WASHINGTON

Sample ID	Date	Benzo[A] Anthracene (ug/L)	Chrysene (ug/L)	Benzo[B] Fluoranthene (ug/L)	Benzo[K] Fluoranthene (ug/L)	Benzo[A] Pyrene (ug/L)	Indeno[1,2,3-Cd] Pyrene (ug/L)	Dibenz[A,H] Anthracene (ug/L)	Total cPAHs
MW-1	03/21/12	<0.020	<0.020	<0.020	<0.020	<0.020	0.040	0.026	0.066
MW-1	06/21/12	<0.020	<0.020	<0.020	<0.020	<0.020	<0.020	<0.020	<0.020
MW-1	09/17/12	<0.020	<0.020	<0.020	<0.020	<0.020	<0.020	<0.020	<0.020
MW-1	12/10/12	<0.020	<0.020	<0.020	<0.020	<0.020	<0.020	<0.020	<0.020
MW-1	03/04/13	<0.020	<0.020	<0.020	<0.020	<0.020	<0.020	<0.020	<0.020
MW-1	06/05/13	<0.020	<0.020	<0.020	<0.020	<0.020	<0.020	<0.020	<0.020
MW-1	12/09/13	<0.020	<0.020	<0.020	<0.020	<0.020	<0.020	<0.020	<0.020
MW-2	03/21/12	<0.020	<0.020	<0.020	<0.020	<0.020	0.052	0.034	0.086
MW-2	06/21/12	<0.020	<0.020	<0.020	<0.020	<0.020	<0.020	<0.020	<0.020
MW-2	09/17/12	<0.020	<0.020	<0.020	<0.020	<0.020	<0.020	<0.020	<0.020
MW-2	12/10/12	<0.020	<0.020	<0.020	<0.020	<0.020	<0.020	<0.020	<0.020
MW-2	03/04/13	<0.020	<0.020	<0.020	<0.020	<0.020	<0.020	<0.020	<0.020
MW-2	06/05/13	<0.020	<0.020	<0.020	<0.020	<0.020	<0.020	<0.020	<0.020
MW-2	12/09/13	<0.020	<0.020	<0.020	<0.020	<0.020	<0.020	<0.020	<0.020
MW-3	03/21/12	<0.020	<0.020	<0.020	<0.020	<0.020	0.059	0.039	0.098
MW-3	06/21/12	<0.020	<0.020	<0.020	<0.020	<0.020	<0.020	<0.020	<0.020
MW-3	09/17/12	<0.020	<0.020	<0.020	<0.020	<0.020	<0.020	<0.020	<0.020
MW-3	12/10/12	<0.020	<0.020	<0.020	<0.020	<0.020	<0.020	<0.020	<0.020
MW-3	03/04/13	<0.020	<0.020	<0.020	<0.020	<0.020	<0.020	<0.020	<0.020
MW-3	06/05/13	<0.020	<0.020	<0.020	<0.020	<0.020	<0.020	<0.020	<0.020
MW-3	12/09/13	<0.020	<0.020	<0.020	<0.020	<0.020	<0.020	<0.020	<0.020
MW-4	03/21/12	<0.020	<0.020	0.023	<0.020	<0.020	0.050	0.035	0.108
MW-4	06/21/12	<0.020	<0.020	<0.020	<0.020	<0.020	<0.020	<0.020	<0.020
MW-4	09/17/12	<0.020	<0.020	<0.020	<0.020	<0.020	<0.020	<0.020	<0.020
MW-4	12/10/12	<0.020	<0.020	<0.020	<0.020	<0.020	<0.020	<0.020	<0.020
MW-4	03/04/13	<0.020	<0.020	<0.020	<0.020	<0.020	<0.020	<0.020	<0.020
MW-4	06/05/13	<0.020	<0.020	<0.020	<0.020	<0.020	<0.020	<0.020	<0.020
MW-4	12/09/13	<0.020	<0.020	<0.020	<0.020	<0.020	<0.020	<0.020	<0.020

MTCA Method A Cleanup Level for Total cPAHs

0.1

Notes:

ug/L = micrograms per liter

< = Not Detected above the Reporting Limit

PAHs = Polycyclic Aromatic Hydrocarbons, Analysis by EPA Method 8270 SIM

T1
GROUNDWATER ANALYTICAL RESULTS - NON-CARCINOGENIC PAHS
 LAKE CHELAN BOAT COMPANY
 1418 WEST WOODIN AVENUE
 CHELAN, WASHINGTON

Sample ID	Date	Ace-naphthene (ug/L)	Ace-naphthylene (ug/L)	Anthracene (ug/L)	Benzo(g,h,i) Perylene (ug/L)	Fluoranthene (ug/L)	Fluorene (ug/L)	1-Methyl-naphthalene (ug/L)	2-Methyl-naphthalene (ug/L)	Naphthalene (ug/L)	Phenanthrene (ug/L)	Pyrene (ug/L)	Total Naphthalenes (ug/L)
MW-1	3/21/12	<0.020	<0.020	<0.020	0.086	<0.020	<0.020	<0.020	<0.020	<0.020	<0.020	<0.020	<0.020
MW-1	6/21/12	<0.020	<0.020	<0.020	<0.020	<0.020	<0.020	<0.020	<0.020	<0.020	<0.020	<0.020	<0.020
MW-1	12/9/13	--	--	--	--	--	--	<0.020	<0.020	0.079	--	--	--
MW-2	3/21/12	<0.020	<0.020	<0.020	0.094	0.030	<0.020	0.043	<0.020	<0.020	<0.020	<0.020	0.043
MW-2	6/21/12	<0.020	<0.020	<0.020	<0.020	<0.020	<0.020	<0.020	<0.020	<0.020	<0.020	<0.020	<0.020
MW-2	12/9/13	--	--	--	--	--	--	<0.020	<0.020	<0.020	--	--	--
MW-3	3/21/12	0.75	0.089	<0.020	0.11	<0.020	1.8	7.7	0.16	14	<0.020	<0.020	21.86
MW-3	6/21/12	0.21	<0.020	<0.020	<0.020	<0.020	0.47	3.0	0.21	7.5	<0.020	<0.020	10.71
MW-3	12/9/13	--	--	--	--	--	--	<0.020	<0.020	<0.020	--	--	--
MW-4	6/21/12	<0.020	<0.020	<0.020	<0.020	<0.020	<0.020	0.048	<0.020	<0.020	<0.020	<0.020	0.048
MW-4	12/9/13	--	--	--	--	--	--	<0.020	<0.020	0.040	--	--	--
MW-4	6/19/14	--	--	--	--	--	--	<0.020	<0.020	<0.020	--	--	--
MTCA Method A Cleanup Levels:													160

Notes:
 ug/L = micrograms per liter
 NA = Not Analyzed
 < = Not detected above the laboratory method reporting limit
 PAHs = Polycyclic Aromatic Hydrocarbons, Analysis by EPA Method 8270 SIM

TABLE 5
GROUNDWATER ANALYTICAL RESULTS - FRACTIONAL ANALYSIS
 LAKE CHELAN BOAT COMPANY
 1418 WEST WOODIN AVENUE
 CHELAN, WASHINGTON

	MW-1	MW-2	MW-3	MW-4	MW-4
	12/9/2013	12/9/2013	12/9/2013	12/9/2013	6/19/2014
Volatile Petroleum Hydrocarbons					
C5-C6 Aliphatics (ug/L)	<50	<50	<50	<50	--
C6-C8 Aliphatics (ug/L)	<50	<50	<50	<50	--
C8-C10 Aliphatics (ug/L)	<50	<50	<50	<50	--
C8-C10 Aromatics (ug/L)	<50	<50	<50	<50	--
C10-C12 Aromatics (ug/L)	<50	<50	<50	<50	--
Hexane (ug/L)	<2.0	<2.0	<2.0	<2.0	--
Extractable Petroleum Hydrocarbons					
C8-C10 Aliphatics (ug/L)	<50	<50	<50	<50	<50
C10-C12 Aliphatics (ug/L)	<50	<50	<50	<50	<50
C12-C16 Aliphatics (ug/L)	<50	<50	<50	<50	<50
C16-C21 Aliphatics (ug/L)	<50	<50	<50	<50	<50
C21-C34 Aliphatics (ug/L)	<50	<50	<50	<50	<50
C8-C10 Aromatics (ug/L)	<50	<50	<50	<50	<50
C12-C16 Aromatics (ug/L)	<50	<50	<50	<50	<50
C16-C21 Aromatics (ug/L)	<50	<50	<50	<50	<50
C21-C34 Aromatics (ug/L)	<50	<50	<50	<50	<50

Notes:
 µg/L= micrograms per liter
 < = Less than reporting limit
 -- = Not Analyzed
 Extractable petroleum hydrocarbon fractions - analysis by method NWEPH
 Volatile petroleum hydrocarbon fractions and hexane - analysis by method NWVPH

TABLE 6
GROUNDWATER ANALYTICAL RESULTS - CENSUS, BIO-TRAP RESULTS
 LAKE CHELAN BOAT COMPANY
 1418 WEST WOODIN AVENUE
 CHELAN, WASHINGTON

Sample ID	Date Sampled	Phenol Hydroxylase (CB)	Naphthalene Dioxygenase (CB)	Naphthalene-inducible Dioxygenase (CB)	Total Eubacteria (CB)
MW-1	06/22/15	2.25E+04	4.28E+03	1.16E+02	5.42E+06
MW-3	06/22/15	5.93E+03	3.27E+03	2.41E+01	5.59E+06
MW-4	06/22/15	5.49E+03	2.19E+03	1.49E+02	3.46E+06
Laboratory Reporting Limit:		2.50E+02	2.50E+02	2.50E+02	2.50E+02
Detection Limit:		5.00E+00	5.00E+00	5.00E+00	5.00E+00
Notes: CB = units are in cells/bead					

Figures

- Figure 1 Site Location Map
- Figure 2 Groundwater Elevation Contour Map
- Figure 3 Groundwater Hydrocarbon Distribution Map

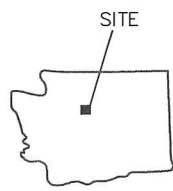
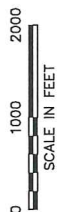


PROJECT NUMBER STCG-4.

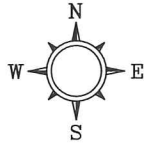
APPROVED BY

CHECKED BY

DRAWN BY
ICD 04/21/2013



LATITUDE 47D 50M 09S NORTH
 LONGITUDE 120D 02M 16S WEST
 U.S. GEOLOGICAL SURVEY-2004
 7.5 MINUTE QUADRANGLE MAP
 CHELAN, WASHINGTON

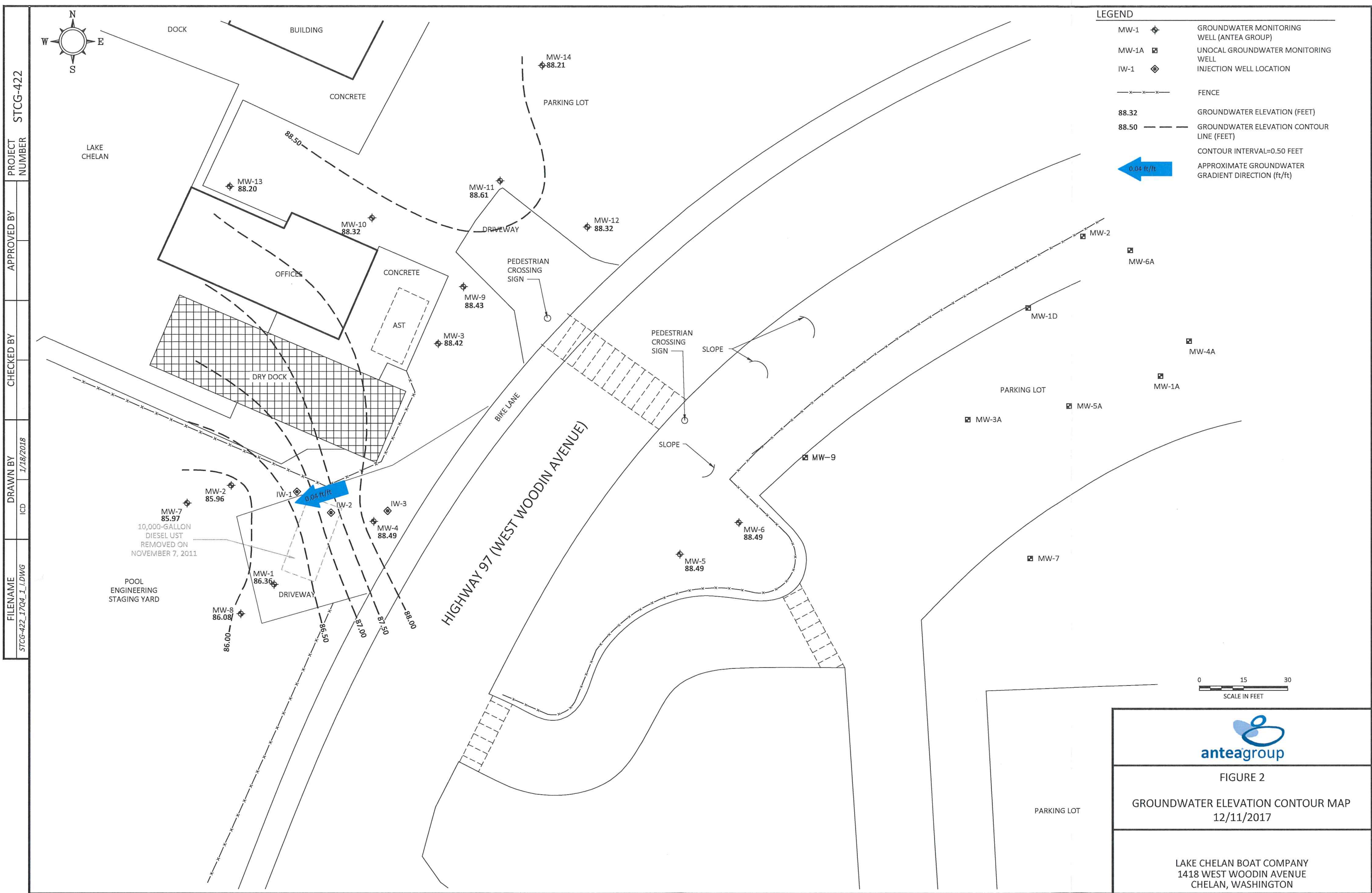


LAKE CHELAN BOAT COMPANY

FIGURE 1

SITE LOCATION MAP

1418 WEST WOODIN AVENUE
 CHELAN, WASHINGTON



PROJECT NUMBER: STCG-422


APPROVED BY: _____

CHECKED BY: _____

DRAWN BY: ICD 1/18/2018

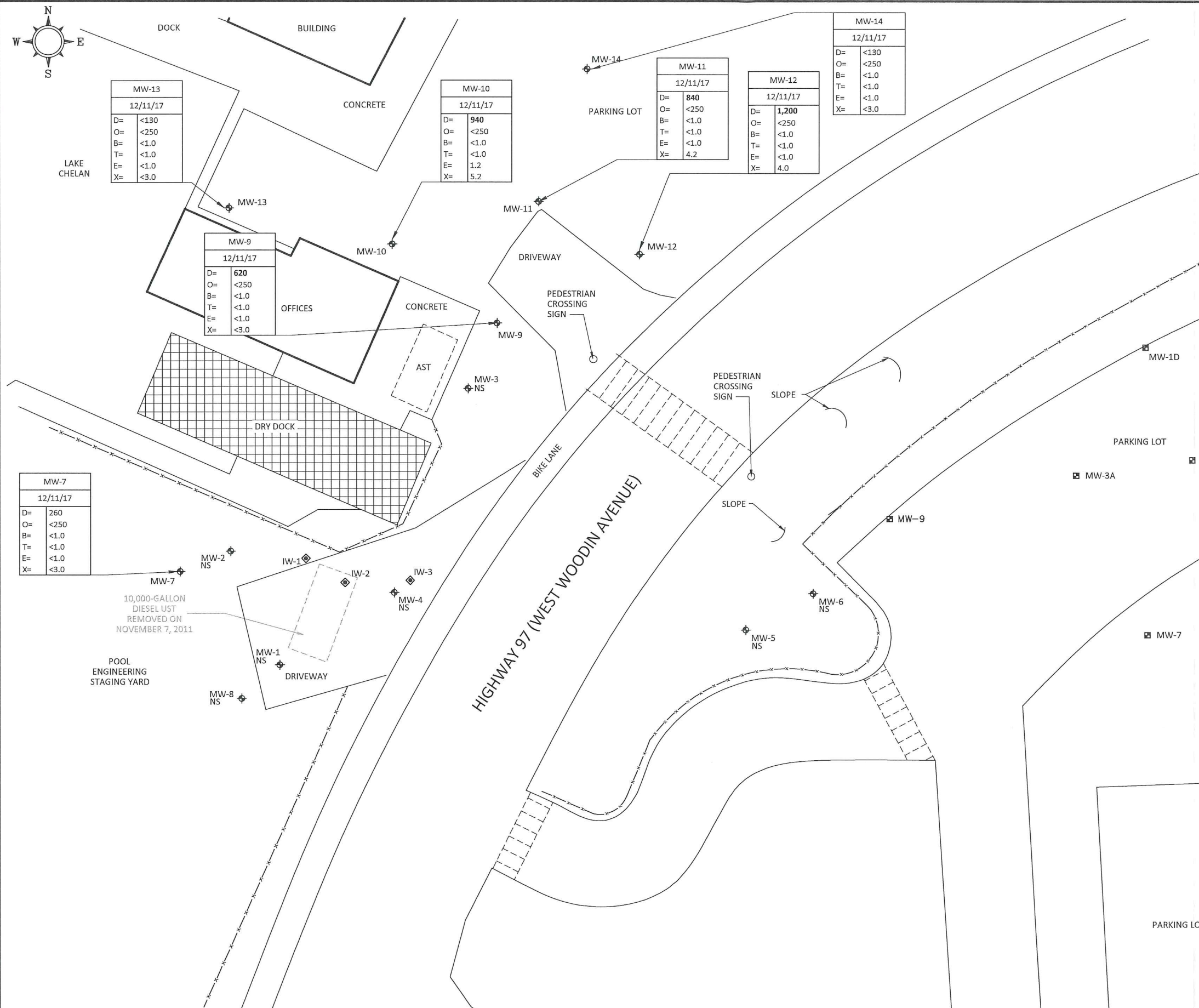
FILENAME: STCG-422_1704_1_DWG

LEGEND	
MW-1	GROUNDWATER MONITORING WELL (ANTEA GROUP)
MW-1A	UNOCAL GROUNDWATER MONITORING WELL
IW-1	INJECTION WELL LOCATION
-x-x-x-	FENCE
88.32	GROUNDWATER ELEVATION (FEET)
88.50	GROUNDWATER ELEVATION CONTOUR LINE (FEET)
	CONTOUR INTERVAL=0.50 FEET
← 0.04 ft/ft	APPROXIMATE GROUNDWATER GRADIENT DIRECTION (ft/ft)


FIGURE 2
GROUNDWATER ELEVATION CONTOUR MAP
 12/11/2017

LAKE CHELAN BOAT COMPANY
 1418 WEST WOODIN AVENUE
 CHELAN, WASHINGTON

PROJECT NUMBER: STCG-422
 APPROVED BY: [Blank]
 CHECKED BY: [Blank]
 DRAWN BY: 1/18/2018
 FILENAME: STCG-422_17Q4.DWG



LEGEND

- MW-1 GROUNDWATER MONITORING WELL (ANTEA GROUP)
- MW-1A UNOCAL GROUNDWATER MONITORING WELL
- IW-1 INJECTION WELL LOCATION
- FENCE
- D TPH-D - TOTAL PETROLEUM HYDROCARBONS AS DIESEL (µg/L)
- O TPH-O - TOTAL PETROLEUM HYDROCARBONS AS OIL (µg/L)
- B BENZENE (µg/L)
- T TOLUENE (µg/L)
- E ETHYLBENZENE (µg/L)
- X TOTAL XYLENES (µg/L)
- µg/L MICROGRAMS PER LITER
- < NOT DETECTED ABOVE LIMIT NOTED
- NS NOT SAMPLED
- BOLD VALUES** INDICATE EXCEEDANCE OF MTCA METHOD A CLEANUP LEVELS

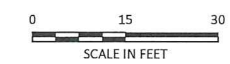


FIGURE 3
 GROUNDWATER HYDROCARBON
 DISTRIBUTION MAP
 12/11/2017

LAKE CHELAN BOAT COMPANY
 1418 WEST WOODIN AVENUE
 CHELAN, WASHINGTON

Groundwater Monitoring Report - Fourth Quarter of 2017
Lake Chelan Boat Company
1418 West Woodin Avenue, Chelan, Washington



Appendix A

Analytical Reports and Chain-of-Custody Documentation



December 19, 2017

Mr. Matt Miller
Antea Group
4006 - 148th Ave NE
Redmond, WA 98052

Dear Mr. Miller,

On December 13th, 8 samples were received by our laboratory and assigned our laboratory project number EV17120088. The project was identified as your STCG-4222_1000; Chelan. The sample identification and requested analyses are outlined on the attached chain of custody record.

No abnormalities or nonconformances were observed during the analyses of the project samples.

Please do not hesitate to call me if you have any questions or if I can be of further assistance.

Sincerely,

ALS Laboratory Group

Rick Bagan
Laboratory Director



CERTIFICATE OF ANALYSIS

CLIENT:	Antea Group 4006 - 148th Ave NE Redmond, WA 98052	DATE:	12/19/2017
CLIENT CONTACT:	Matt Miller	ALS JOB#:	EV17120088
CLIENT PROJECT:	STCG-4222_1000; Chelan	ALS SAMPLE#:	EV17120088-01
CLIENT SAMPLE ID	MW-7_12.76	DATE RECEIVED:	12/13/2017
		COLLECTION DATE:	12/11/2017 11:20:00 AM
		WDOE ACCREDITATION:	C601

SAMPLE DATA RESULTS

ANALYTE	METHOD	RESULTS	REPORTING LIMITS	DILUTION FACTOR	UNITS	ANALYSIS DATE	ANALYSIS BY
Benzene	EPA-8021	U	1.0	1	UG/L	12/14/2017	SNC
Toluene	EPA-8021	U	1.0	1	UG/L	12/14/2017	SNC
Ethylbenzene	EPA-8021	U	1.0	1	UG/L	12/14/2017	SNC
Xylenes	EPA-8021	U	3.0	1	UG/L	12/14/2017	SNC
TPH-Diesel Range	NWTPH-DX	260	130	1	UG/L	12/14/2017	EBS
TPH-Oil Range	NWTPH-DX	U	250	1	UG/L	12/14/2017	EBS

SURROGATE	METHOD	%REC	ANALYSIS DATE	ANALYSIS BY
TFT	EPA-8021	103	12/14/2017	SNC
C25	NWTPH-DX	102	12/14/2017	EBS

U - Analyte analyzed for but not detected at level above reporting limit.
Chromatogram indicates that it is likely that sample contains highly weathered diesel.



CERTIFICATE OF ANALYSIS

CLIENT:	Antea Group	DATE:	12/19/2017
	4006 - 148th Ave NE	ALS JOB#:	EV17120088
	Redmond, WA 98052	ALS SAMPLE#:	EV17120088-02
CLIENT CONTACT:	Matt Miller	DATE RECEIVED:	12/13/2017
CLIENT PROJECT:	STCG-4222_1000; Chelan	COLLECTION DATE:	12/11/2017 11:40:00 AM
CLIENT SAMPLE ID	MW-9_11.12	WDOE ACCREDITATION:	C601

SAMPLE DATA RESULTS

ANALYTE	METHOD	RESULTS	REPORTING LIMITS	DILUTION FACTOR	UNITS	ANALYSIS DATE	ANALYSIS BY
Benzene	EPA-8021	U	1.0	1	UG/L	12/14/2017	SNC
Toluene	EPA-8021	U	1.0	1	UG/L	12/14/2017	SNC
Ethylbenzene	EPA-8021	U	1.0	1	UG/L	12/14/2017	SNC
Xylenes	EPA-8021	U	3.0	1	UG/L	12/14/2017	SNC
TPH-Diesel Range	NWTPH-DX	620	130	1	UG/L	12/14/2017	EBS
TPH-Oil Range	NWTPH-DX	U	250	1	UG/L	12/14/2017	EBS

SURROGATE	METHOD	%REC	ANALYSIS DATE	ANALYSIS BY
TFT	EPA-8021	103	12/14/2017	SNC
C25	NWTPH-DX	106	12/14/2017	EBS

U - Analyte analyzed for but not detected at level above reporting limit.
 Chromatogram indicates that it is likely that sample contains highly weathered diesel.



CERTIFICATE OF ANALYSIS

CLIENT:	Antea Group	DATE:	12/19/2017
	4006 - 148th Ave NE	ALS JOB#:	EV17120088
	Redmond, WA 98052	ALS SAMPLE#:	EV17120088-03
CLIENT CONTACT:	Matt Miller	DATE RECEIVED:	12/13/2017
CLIENT PROJECT:	STCG-4222_1000; Chelan	COLLECTION DATE:	12/11/2017 12:20:00 PM
CLIENT SAMPLE ID	MW-10_8.66	WDOE ACCREDITATION:	C601

SAMPLE DATA RESULTS

ANALYTE	METHOD	RESULTS	REPORTING LIMITS	DILUTION FACTOR	UNITS	ANALYSIS DATE	ANALYSIS BY
Benzene	EPA-8021	U	1.0	1	UG/L	12/14/2017	SNC
Toluene	EPA-8021	U	1.0	1	UG/L	12/14/2017	SNC
Ethylbenzene	EPA-8021	1.2	1.0	1	UG/L	12/14/2017	SNC
Xylenes	EPA-8021	5.2	3.0	1	UG/L	12/14/2017	SNC
TPH-Diesel Range	NWTPH-DX	940	130	1	UG/L	12/14/2017	EBS
TPH-Oil Range	NWTPH-DX	U	250	1	UG/L	12/14/2017	EBS

SURROGATE	METHOD	%REC	ANALYSIS DATE	ANALYSIS BY
TFT	EPA-8021	104	12/14/2017	SNC
C25	NWTPH-DX	106	12/14/2017	EBS

U - Analyte analyzed for but not detected at level above reporting limit.
 Chromatogram indicates that it is likely that sample contains an unidentified diesel range product.
 Diesel range product results biased high due to gasoline range product overlap.



CERTIFICATE OF ANALYSIS

CLIENT:	Antea Group	DATE:	12/19/2017
	4006 - 148th Ave NE	ALS JOB#:	EV17120088
	Redmond, WA 98052	ALS SAMPLE#:	EV17120088-04
CLIENT CONTACT:	Matt Miller	DATE RECEIVED:	12/13/2017
CLIENT PROJECT:	STCG-4222_1000; Chelan	COLLECTION DATE:	12/11/2017 2:35:00 PM
CLIENT SAMPLE ID	MW-11_9.99	WDOE ACCREDITATION:	C601

SAMPLE DATA RESULTS

ANALYTE	METHOD	RESULTS	REPORTING LIMITS	DILUTION FACTOR	UNITS	ANALYSIS DATE	ANALYSIS BY
Benzene	EPA-8021	U	1.0	1	UG/L	12/14/2017	SNC
Toluene	EPA-8021	U	1.0	1	UG/L	12/14/2017	SNC
Ethylbenzene	EPA-8021	U	1.0	1	UG/L	12/14/2017	SNC
Xylenes	EPA-8021	4.2	3.0	1	UG/L	12/14/2017	SNC
TPH-Diesel Range	NWTPH-DX	840	130	1	UG/L	12/14/2017	EBS
TPH-Oil Range	NWTPH-DX	U	250	1	UG/L	12/14/2017	EBS

SURROGATE	METHOD	%REC	ANALYSIS DATE	ANALYSIS BY
TFT	EPA-8021	103	12/14/2017	SNC
C25	NWTPH-DX	101	12/14/2017	EBS

U - Analyte analyzed for but not detected at level above reporting limit.
 Chromatogram indicates that it is likely that sample contains highly weathered diesel.
 Fuel range product results biased high due to gasoline range product overlap.



CERTIFICATE OF ANALYSIS

CLIENT:	Antea Group 4006 - 148th Ave NE Redmond, WA 98052	DATE:	12/19/2017
CLIENT CONTACT:	Matt Miller	ALS JOB#:	EV17120088
CLIENT PROJECT:	STCG-4222_1000; Chelan	ALS SAMPLE#:	EV17120088-05
CLIENT SAMPLE ID	MW-12_12.80	DATE RECEIVED:	12/13/2017
		COLLECTION DATE:	12/11/2017 2:50:00 PM
		WDOE ACCREDITATION:	C601

SAMPLE DATA RESULTS

ANALYTE	METHOD	RESULTS	REPORTING LIMITS	DILUTION FACTOR	UNITS	ANALYSIS	ANALYSIS
						DATE	BY
Benzene	EPA-8021	U	1.0	1	UG/L	12/14/2017	SNC
Toluene	EPA-8021	U	1.0	1	UG/L	12/14/2017	SNC
Ethylbenzene	EPA-8021	U	1.0	1	UG/L	12/14/2017	SNC
Xylenes	EPA-8021	4.0	3.0	1	UG/L	12/14/2017	SNC
TPH-Diesel Range	NWTPH-DX	1200	130	1	UG/L	12/14/2017	EBS
TPH-Oil Range	NWTPH-DX	U	250	1	UG/L	12/14/2017	EBS

SURROGATE	METHOD	%REC	ANALYSIS	ANALYSIS
			DATE	BY
TFT	EPA-8021	105	12/14/2017	SNC
C25	NWTPH-DX	87.6	12/14/2017	EBS

U - Analyte analyzed for but not detected at level above reporting limit.
 Chromatogram indicates that it is likely that sample contains highly weathered diesel.
 Diesel range product results biased high due to gasoline range product overlap.



CERTIFICATE OF ANALYSIS

CLIENT:	Antea Group	DATE:	12/19/2017
	4006 - 148th Ave NE	ALS JOB#:	EV17120088
	Redmond, WA 98052	ALS SAMPLE#:	EV17120088-06
CLIENT CONTACT:	Matt Miller	DATE RECEIVED:	12/13/2017
CLIENT PROJECT:	STCG-4222_1000; Chelan	COLLECTION DATE:	12/11/2017 12:00:00 PM
CLIENT SAMPLE ID	MW-13_7.64	WDOE ACCREDITATION:	C601

SAMPLE DATA RESULTS

ANALYTE	METHOD	RESULTS	REPORTING LIMITS	DILUTION FACTOR	UNITS	ANALYSIS DATE	ANALYSIS BY
Benzene	EPA-8021	U	1.0	1	UG/L	12/14/2017	SNC
Toluene	EPA-8021	U	1.0	1	UG/L	12/14/2017	SNC
Ethylbenzene	EPA-8021	U	1.0	1	UG/L	12/14/2017	SNC
Xylenes	EPA-8021	U	3.0	1	UG/L	12/14/2017	SNC
TPH-Diesel Range	NWTPH-DX	U	130	1	UG/L	12/14/2017	EBS
TPH-Oil Range	NWTPH-DX	U	250	1	UG/L	12/14/2017	EBS

SURROGATE	METHOD	%REC	ANALYSIS DATE	ANALYSIS BY
TFT	EPA-8021	99.2	12/14/2017	SNC
C25	NWTPH-DX	88.6	12/14/2017	EBS

U - Analyte analyzed for but not detected at level above reporting limit.



CERTIFICATE OF ANALYSIS

CLIENT:	Antea Group	DATE:	12/19/2017
	4006 - 148th Ave NE	ALS JOB#:	EV17120088
	Redmond, WA 98052	ALS SAMPLE#:	EV17120088-07
CLIENT CONTACT:	Matt Miller	DATE RECEIVED:	12/13/2017
CLIENT PROJECT:	STCG-4222_1000; Chelan	COLLECTION DATE:	12/11/2017 1:40:00 PM
CLIENT SAMPLE ID	MW-14_8.31	WDOE ACCREDITATION:	C601

SAMPLE DATA RESULTS

ANALYTE	METHOD	RESULTS	REPORTING LIMITS	DILUTION FACTOR	UNITS	ANALYSIS DATE	ANALYSIS BY
Benzene	EPA-8021	U	1.0	1	UG/L	12/14/2017	SNC
Toluene	EPA-8021	U	1.0	1	UG/L	12/14/2017	SNC
Ethylbenzene	EPA-8021	U	1.0	1	UG/L	12/14/2017	SNC
Xylenes	EPA-8021	U	3.0	1	UG/L	12/14/2017	SNC
TPH-Diesel Range	NWTPH-DX	U	130	1	UG/L	12/14/2017	EBS
TPH-Oil Range	NWTPH-DX	U	250	1	UG/L	12/14/2017	EBS

SURROGATE	METHOD	%REC	ANALYSIS DATE	ANALYSIS BY
TFT	EPA-8021	102	12/14/2017	SNC
C25	NWTPH-DX	87.0	12/14/2017	EBS

U - Analyte analyzed for but not detected at level above reporting limit.



CERTIFICATE OF ANALYSIS

CLIENT:	Antea Group 4006 - 148th Ave NE Redmond, WA 98052	DATE:	12/19/2017
		ALS JOB#:	EV17120088
		ALS SAMPLE#:	EV17120088-08
CLIENT CONTACT:	Matt Miller	DATE RECEIVED:	12/13/2017
CLIENT PROJECT:	STCG-4222_1000; Chelan	COLLECTION DATE:	12/11/2017
CLIENT SAMPLE ID	Trip Blank-1	WDOE ACCREDITATION:	C601

SAMPLE DATA RESULTS

ANALYTE	METHOD	RESULTS	REPORTING LIMITS	DILUTION FACTOR	UNITS	ANALYSIS	ANALYSIS
						DATE	BY
Benzene	EPA-8021	U	1.0	1	UG/L	12/14/2017	SNC
Toluene	EPA-8021	U	1.0	1	UG/L	12/14/2017	SNC
Ethylbenzene	EPA-8021	U	1.0	1	UG/L	12/14/2017	SNC
Xylenes	EPA-8021	U	3.0	1	UG/L	12/14/2017	SNC

SURROGATE	METHOD	%REC	ANALYSIS	ANALYSIS
			DATE	BY
TFT	EPA-8021	102	12/14/2017	SNC

U - Analyte analyzed for but not detected at level above reporting limit.



CERTIFICATE OF ANALYSIS

CLIENT: Antea Group DATE: 12/19/2017
 4006 - 148th Ave NE ALS SDG#: EV17120088
 Redmond, WA 98052 WDOE ACCREDITATION: C601

CLIENT CONTACT: Matt Miller
 CLIENT PROJECT: STCG-4222_1000; Chelan

LABORATORY CONTROL SAMPLE RESULTS

ALS Test Batch ID: 123321 - Water by EPA-8021

SPIKED COMPOUND	METHOD	%REC	RPD	QUAL	LIMITS		ANALYSIS DATE	ANALYSIS BY
					MIN	MAX		
Benzene - BS	EPA-8021	101			83	120	12/13/2017	SNC
Benzene - BSD	EPA-8021	102	2		83	120	12/13/2017	SNC
Toluene - BS	EPA-8021	96.7			85	115	12/13/2017	SNC
Toluene - BSD	EPA-8021	98.5	2		85	115	12/13/2017	SNC
Ethylbenzene - BS	EPA-8021	95.7			85	113	12/13/2017	SNC
Ethylbenzene - BSD	EPA-8021	99.2	4		85	113	12/13/2017	SNC
Xylenes - BS	EPA-8021	93.0			85	116	12/13/2017	SNC
Xylenes - BSD	EPA-8021	96.2	3		85	116	12/13/2017	SNC

ALS Test Batch ID: 123535 - Water by NWTPH-DX

SPIKED COMPOUND	METHOD	%REC	RPD	QUAL	LIMITS		ANALYSIS DATE	ANALYSIS BY
					MIN	MAX		
TPH-Diesel Range - BS	NWTPH-DX	86.5			67	125.2	12/14/2017	EBS
TPH-Diesel Range - BSD	NWTPH-DX	94.1	8		67	125.2	12/14/2017	EBS

APPROVED BY

Laboratory Director

