

# Shelton Harbor partial cleanup



Shelton Harbor, 2006

## CONTACT & INFORMATION

### Comments accepted:

February 15 to March 19, 2018

### Submit written comments to:

Joyce Mercuri  
Cleanup Project Manager  
[Joyce.Mercuri@ecy.wa.gov](mailto:Joyce.Mercuri@ecy.wa.gov)  
P.O. Box 47600  
Olympia, WA 98504-7600  
(360) 407-6260

### Document review locations:

#### Shelton Timberland

#### Regional Library

710 West Alder Street  
Shelton, WA 98584  
(360) 426-1362

#### WA Department of Ecology

#### Southwest Regional Office

300 Desmond Drive SE  
Lacey, WA 98503

By appointment only:

Contact Susie Baxter,  
Phone: (360) 407-6365  
[PublicDisclosureSWRO@ecy.wa.gov](mailto:PublicDisclosureSWRO@ecy.wa.gov)

#### Ecology's Shelton Harbor

#### website

<https://fortress.wa.gov/ecy/gsp/Sitepage.aspx?csid=13007>

Facility Site ID #: 18051

Cleanup Site ID #: 13007

## Seeking comments on new cleanup plans

The Washington Department of Ecology is working with Simpson Timber Company to clean up contamination from historic industrial activities in Shelton Harbor. A plan to clean up part of the site, called an Interim Action Plan, is available for public comment.

We invite your comments on the Interim Action Plan, which:

- Describes the nature and extent of contamination at the Shelton Harbor cleanup site.
- Evaluates different cleanup options for portions of the site.
- Proposes cleanup actions to protect people and the environment from contamination in the interim action areas.

Ecology also reviewed information about the cleanup action to see if it will have negative impacts on people or the environment. State Environmental Policy Act (SEPA) documents explain this review and are available for public comment.

## We want to hear from you!

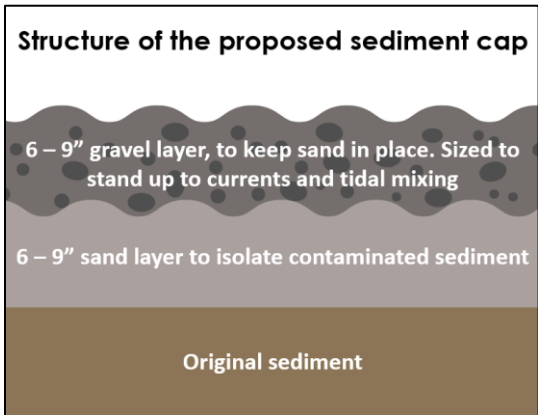
You are invited to comment on the work plan and SEPA documents from **February 15 to March 19, 2018**. We'll also invite you to comment on other milestone cleanup documents as they are developed in the future.

## Interim actions address critical cleanup needs

The Interim Action Work Plan evaluates different cleanup options and describes cleanup work proposed for areas in the north and south parts of Shelton Harbor. Interim actions occur before the final cleanup is designed for an entire site, often to address critical cleanup needs or to coordinate with more immediate development actions. This interim action addresses the highest concentrations of contamination in Shelton Harbor, and sediment contamination in the footprint of a planned habitat restoration project (see description on page 2).

## Plans propose capping three areas in the harbor

Section 4.5 of the Interim Action Work Plan describes work in three sediment management areas (SMAs) in Shelton Harbor: the northwest corner, near the mouth of Shelton Creek (SMA 1), a former boat



maintenance area west of the Shelton Yacht Club (SMA 2), and in the southwest harbor near the former Rayonier pulp mill (SMA 3). See the map on the following page for more detail. The cleanup plan describes covering all of these areas with two different protective layers to form a cap over the contaminated sediment. The cap design is illustrated in the drawing on the left.

A sand layer on top of the contaminated sediment isolates the sediment from the surrounding environment and does most of the work of the cap. A gravel layer on top of the sand protects the sand from the currents and tidal forces on Shelton Harbor. In SMA 3, a thicker, three foot cap is necessary to keep the capping materials in place on a steeper slope along the shore. In total, about 23,000 cubic

yards (almost 1,300 large dump truck loads) of clean sand and gravel will be used.

### Healthier habitat in Shelton Harbor – partnership for effective work

A project to restore wildlife habitat in Shelton Harbor is underway. The restoration plan includes removing creosote pilings, restoring shoreline, and ultimately restoring about 50 acres of saltmarsh in northern Shelton Harbor. The Shelton Harbor habitat restoration project started in 2016 with the conservation of Eagle Point, a 14-acre piece of tidelands and forest. Recently, logjams were installed at the mouth of Goldsborough Creek to catch clean sediments and start building up the saltmarsh. The proposed next step is depositing new sand and gravel on the west shoreline of the north half of the harbor. You can learn more at [sheltonharbor.org](http://sheltonharbor.org).

This interim action addresses sediment contamination in the footprint of the habitat restoration project (see map on page 3) to make sure that it is built on a foundation that meets state cleanup standards. The cleanup work also means that the restored habitat won't be disturbed by future cleanup activities. We are working closely with restoration project partners to make both the cleanup work and restoration work as efficient and effective as possible.


### Next steps: Permitting and work on the ground

When this comment period ends, we will respond to any comments we receive and finalize the work plan. Simpson will collect data to refine the engineering design for the interim action. The major cleanup work is planned for fall and winter of 2018. The next phase of restoration work is planned for the same time, to take advantage of mobilized equipment.

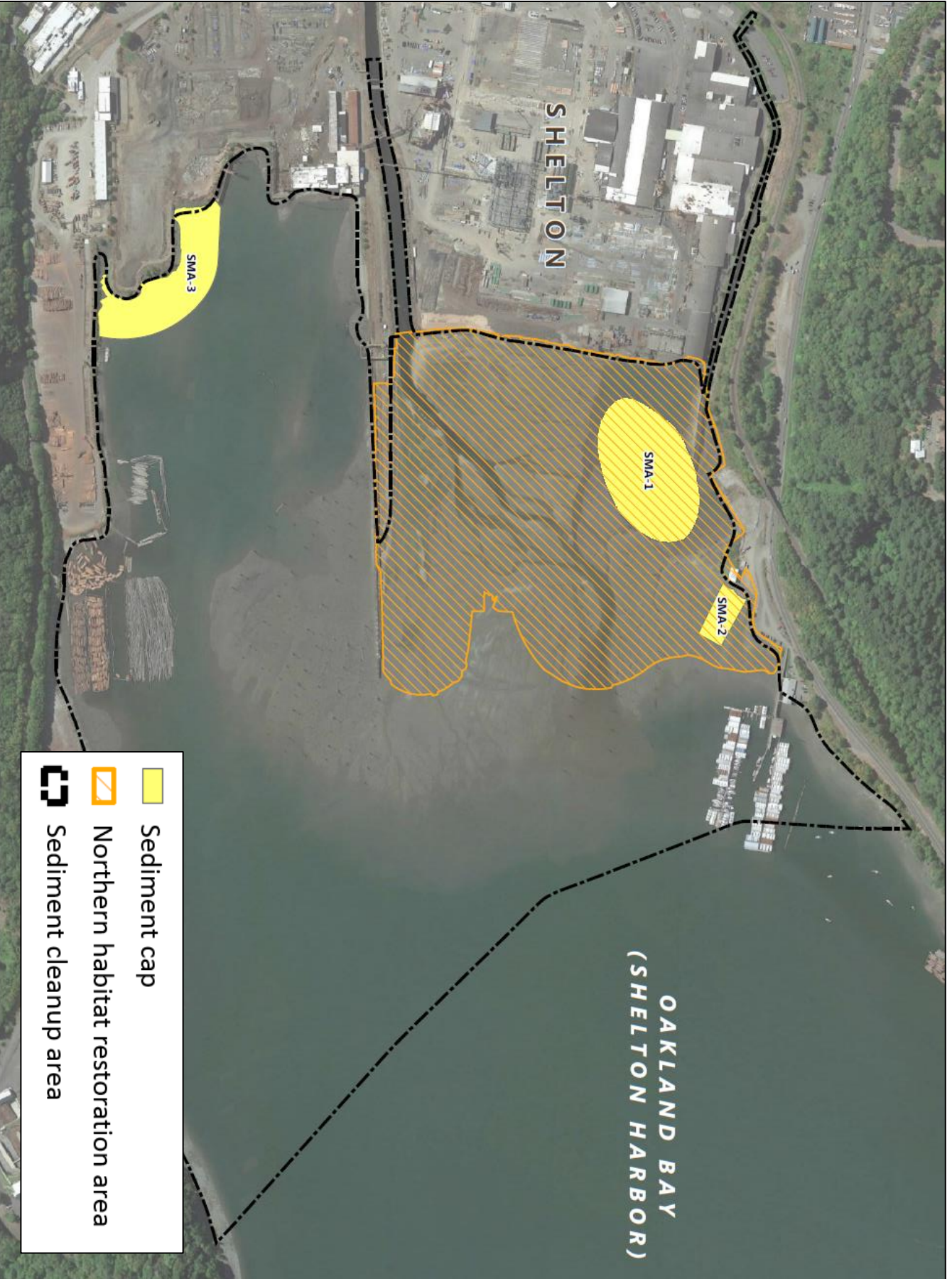
Next, Simpson will work under Ecology's oversight to produce a remedial investigation report to describe the extent and nature of contamination for the larger Shelton Harbor area, develop a feasibility study report for any remaining cleanup that is needed in the harbor, and develop a cleanup action plan. We will invite public comment again when the cleanup action plan is ready.

### ECOLOGY'S BASIC CLEANUP PROCESS



 Opportunities for public comment. We encourage feedback. Public comment periods are held at key times during the cleanup process.

# Shelton Harbor site map & interim action locations





DEPARTMENT OF  
**ECOLOGY**  
State of Washington

Toxics Cleanup Program  
PO Box 47775  
Olympia, WA 98504-7775

## Join the discussion about cleanup in Shelton Harbor!



**Shelton Harbor Cleanup & Restoration**  
Your comments are invited on new cleanup plans and other cleanup documents.

**Public Comment Period**  
February 15 – March 19, 2018

**Facility Site ID #: 18051**  
**Cleanup Site ID #: 13007**

**¿Habla Español?** Si necesita esta información en español, contactenos a [preguntas@ecy.wa.gov](mailto:preguntas@ecy.wa.gov).

### Special accommodations

To request materials in a format for the visually impaired, visit <https://ecology.wa.gov/accessibility>, call Ecology at 360-407-6300, Relay Service 711, or TTY 877-833-6341.