

24 April 2018

Adam Harris, LHG
Toxics Cleanup Program
Southwest Regional Office
Washington State Department of Ecology
PO Box 47775
Olympia, WA 98504-7775

Subject: Gordon Trucking 2017 Remedial Activities
Address: 151 Stewart Road SW, Pacific, WA
Facility/Site No.: 3393818 VCP Project No: SW0969

Dear Mr. Harris:

This letter has been prepared by Geosyntec Consultants (Geosyntec) to summarize remedial activities that occurred at the Gordon Trucking Inc. (GTI) property in Pacific, WA (site) in 2017. Ongoing site groundwater monitoring and remediation is being conducted under the Washington State Department of Ecology (Ecology) Voluntary Cleanup Program (VCP), project number SW0969.

In August 2007, GTI discovered petroleum-impacted soil during pipe repair work in the vicinity of a fuel island at their Pacific, Washington property (Figures 1 and 2). Semi-annual groundwater monitoring was performed at the site between 2008 and 2013. In 2013, Geosyntec submitted a work plan to Ecology (“Gordon Trucking Groundwater Monitoring Work Plan for 2013”) recommending to change the monitoring frequency from semi-annual to annual and to install ORC socks in three monitoring wells. The work plan was approved and oxygen release compound (ORC) socks were installed in February 2013. Annual groundwater sampling and ORC sock replacements were performed between 2014 and 2016. In early 2017, the monitoring frequency was reduced from annual to biennial, following approval from the former Ecology site manager, Thomas Middleton.

No groundwater sampling was performed in 2017, however annual ORC sock replacement continued. On 21 March 2017, Geosyntec installed five new ORC well inserts in three monitoring wells at the Site (MW-02, MW-03, and MW-04) to aid in continued microbial degradation of the subsurface hydrocarbons.

The next biennial groundwater monitoring event and ORC sock replacement is scheduled to occur in 2018. Please contact Adrianna Jarosz at (206) 496-1447 or Dave Parkinson at (206) 496-1446 if you have questions regarding this letter.

Sincerely,



Adrianna Jarosz, P.E.
Senior Staff Engineer

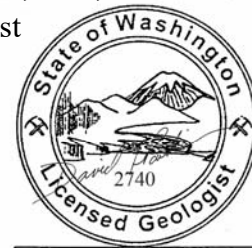


Dave Parkinson, PhD, L.G.
Senior Scientist

cc: Dominic Nicandri, GTI

Enclosures:

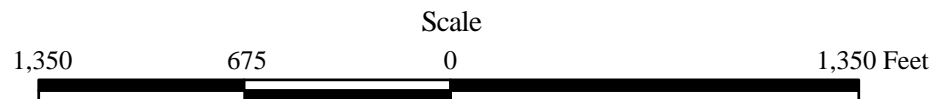
- Figure 1: Location Map
- Figure 2: Site Map



David L. Parkinson



**Location Map, Gordon Trucking, Inc.
151 Stewart Road SW, Pacific, Washington 98047**



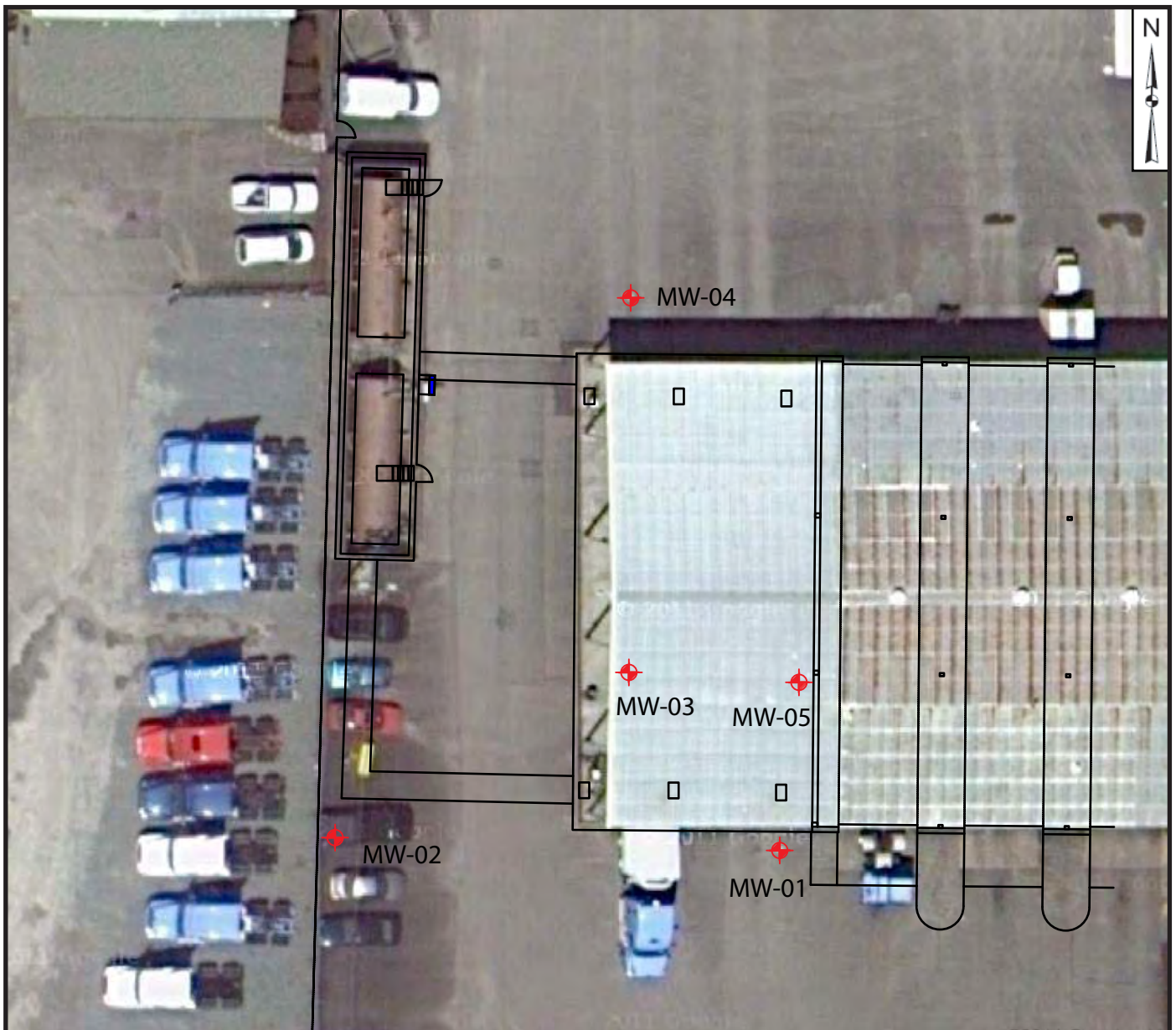
Geosyntec
consultants






**Figure
1**

Seattle, WA

April 2018



Legend  Monitoring well location (water elevation in feet above mean sea level)	Groundwater Monitoring Locations Gordon Trucking Inc.		
<div data-bbox="175 1795 787 1858"> 45 22.5 0 45 Feet  </div>	<div data-bbox="828 1753 1079 1848"> Geosyntec consultants </div> <div data-bbox="868 1869 1039 1900"> Seattle, WA </div>	<div data-bbox="1112 1753 1364 1848">  </div> <div data-bbox="1161 1869 1307 1900"> April 2018 </div>	Figure 2