

RECEIVED

MAY 15 2015

WA State Department
of Ecology (SWRO)

UST REMOVALS
10816 18TH AVENUE E
TACOMA, WASHINGTON
STS PROJECT #ST5693

SEATTLE TANK SERVICES

Environmental Services

IFCI CERTIFIED Lic # SEATTTT012Q4'

www.seattletank.com

P.O. Box 31516, Seattle, Washington 98103

Tel: (206) 938-2280

Fax: (206) 937-1967



www.SeattleTank.com
Tel: (206) 938-2280
Fax: (206) 933-1967



www.TacomaTank.com
Tel: (253) 589-9658
Fax: 1(800) 815-8512

UST REMOVALS
10816 18TH AVENUE E
TACOMA, WASHINGTON
STS Project ST5693 – October 11, 2011

1.0 Background

The Subject Property is located at 10816 18TH Avenue NE in Tacoma, Washington. The commercial property is the site of the Midland Manor Assisted Living Facility and borders 18th Avenue E to the east, a residential property to the north, and the Franklin Pierce School District to the south and west. At the time the documented activities occurred, the property belonged to Judy Chan (Owner).

The property was the site of three previously decommissioned underground storage tanks (USTs), one with an approximate capacity of 1,000 gallons and two with approximate capacities of 675 gallon. Each UST had been used to store fuel for the heating systems of three different buildings at the Midland Manor complex. The 1,000-gallon UST (UST #1) was buried in the east portion of the delivery receiving area at the north center of the main building. The first 675-gallon UST (UST #2) was buried to the west of the northwest outbuilding of the complex. The other 675-gallon UST (UST #3) was buried to the south of the southernmost outbuilding of the complex.

The Owner hired Seattle Tank Services (STS) to remove the USTs and conduct any remedial actions required to address petroleum product releases from the USTs.

2.0 UST Removal/Soil Sampling and Analysis

STS obtained the requisite UST removal permits from the City of Tacoma and the Tacoma/Pierce County Health Department. After pumping approximately 600 gallons of water from the USTs, STS used a tracked excavator to unearth all three USTs and load them onto a vehicle for offsite transport. Upon inspection, corrosion holes were seen in all three USTs. The USTs were transported to the STS processing facility for thorough cleaning before being dismantled at Seattle Iron and Metals.

2.01 UST #1

Soils in the UST #1 removal pit were primarily sandy clays and gravel, much of which had a gray discoloration and "diesel" odor characteristic of material having prolonged contact with petroleum substances. An STS ICC-Certified UST Site Assessor collected three representative soil samples from the UST removal pit, and an additional three samples from

UST REMOVALS
10816 18TH AVENUE E
TACOMA, WASHINGTON
STS Project ST5693 - October 12, 2011

the stockpile of excavated overburden soils. The samples were packed into laboratory prepared four-ounce jars fitted with Teflon gasketed lids, given identifying labels and placed into cool storage for delivery to Friedman & Bruya, Inc., a State-accredited analytical laboratory.

At the request of STS, only one sample collected from the UST removal pit was analyzed for the presence of diesel and motor oil range total petroleum hydrocarbons (TPH-D/Motor Oil) according to Washington State Department of Ecology Analytical Method NWTPH-Dx. The targeted analyte was detected in the sample at a concentration of 13,000 milligrams/kilogram (parts/million or ppm), a level exceeding the applicable 2,000-ppm Method A Cleanup Standard established by the Washington State Model Toxics Control Act (MTCA). The analytical result confirmed petroleum product had been released from the UST to the subsurface. The sample collection location is shown as C on the attached site diagram for UST #1.

2.02 UST #2

Soils in the UST #2 removal pit were primarily sands, some of which had a gray discoloration and "diesel" odor characteristic of material having prolonged contact with petroleum substances. An STS ICC-Certified UST Site Assessor collected three representative soil samples from the UST removal pit, and an additional three samples from the stockpile of excavated overburden soils. The samples were handled in the same manner as those collected for UST #1 and submitted to Friedman & Bruya. The locations of the samples collected from the UST #2 removal pit are shown as B, D and E on the diagram for UST #2.

All three samples collected from the UST removal pit were analyzed for the presence of diesel and motor oil range total petroleum hydrocarbons (TPH-D/Motor Oil) according to Washington State Department of Ecology Analytical Method NWTPH-Dx. The targeted analyte was detected in the first sample (Sample location B) at a concentration of 1,600 ppm, a level that was below the applicable MTCA Method A Cleanup Standard. The second UST removal pit sample (Sample location D) was analyzed and found to contain TPH-D/Motor Oil at a concentration of 3,900 ppm, a level exceeding the applicable cleanup standard. The third sample (Sample location E) contained the analyte at a concentration of 1,500 ppm. The analytical result for the sample collected from Sample location D confirmed petroleum product had been released from the UST to the subsurface.

2.03 UST #3

Soils in the UST #3 removal pit were primarily sands, much of which had a gray discoloration and "diesel" odor characteristic of material having prolonged contact with petroleum substances. An STS ICC-Certified UST Site Assessor collected three representative soil samples from the UST removal pit, and an additional three samples from the stockpile of excavated overburden soils. The samples were handled in the same manner as those collected from the other UST removal pits and submitted to Friedman & Bruya.

At the request of STS, only one sample collected from the UST removal pit (Sample location A on the diagram for UST #3) was analyzed for the presence of diesel and motor oil range total petroleum hydrocarbons (TPH-D/Motor Oil) according to Washington State Department of Ecology Analytical Method NWTPH-Dx. The targeted analyte was detected in the sample at a concentration of 43,000 ppm, a level exceeding the applicable MTCA Method A Cleanup

Standard. The analytical result confirmed petroleum product had been released from the UST to the subsurface.

For safety purposes, all three UST removal pits were backfilled with their respective excavated overburden soils pending any remedial action.

3.0 Soil Remediation/Additional Soil Sampling

STS obtained from the Tacoma/Pierce County Health Department the required permit for the disposal of petroleum-impacted soils at an approved land disposal facility. The initial permit allowed for the removal and disposal of a combined 125 tons of impacted material from all three former UST locations. The permit limit was later raised to 450 tons.

3.01 UST #1

Based on the analytical result for the soil sample collected following UST removal, STS used a tracked excavator to remove 54.14 tons of petroleum-impacted soils from the UST removal pit. The soils were loaded into dump trucks and transported to the LRI disposal facility in Graham, Washington.

Following the removal of 38.99 tons of soils, an STS assessor collected a soil sample from the bottom of the excavation (Sample location L on the site diagram for UST #1). The sample was handled in the same manner as those collected previously and submitted to Friedman & Bruya. Friedman & Bruya analyzed the sample according to Analytical Method NWTPH-Dx. TPH-D/Motor Oil was detected in the sample at a concentration of 2,200 ppm, a level exceeding the applicable MTCA Method A Cleanup Standard. The analytical result confirmed petroleum impacts remained at the end of the first day of soil removal.

During the course of soil removal, a water supply line and a clay sewer line were broken. A sufficient quantity of the water entering the excavation was removed to allow repairs to both utilities. Following repairs, another 15.15 tons of soil were removed from the excavation, raising the total to the 54.14 tons.

An STS site assessor collected representative soil samples from five points within the excavation. The sample collection locations are shown as AD - AH on the site diagram for UST #1. The samples were handled in the same manner as those collected previously and submitted to Friedman & Bruya.

Friedman & Bruya analyzed the samples according to Method NWTPH-Dx. TPH-D/Motor Oil was detected in all five samples, three of which contained the analyte at concentrations exceeding the applicable cleanup standard. The three samples with levels of TPH-D/Motor Oil at concentrations exceeding the cleanup standard were collected from the south wall (Sample location AE - 2,300 ppm), north end of the east wall (Sample location AF - 3,400 ppm), and the west wall (Sample location AH - 4,300 ppm).

The sampled locations where the analyte was detected at concentrations lower than the cleanup standard represented material remaining in the north wall (Sample location AD - 780 ppm) and the south end of the east wall (Sample location AG - 1,300 ppm).

UST REMOVALS
10816 18TH AVENUE E
TACOMA, WASHINGTON
STS Project ST5693 - October 12, 2011

Based on the analytical results, STS removed an additional 0.49 tons of impacted soils from the west portion of the south wall and south portion of the west wall. The soil was transported to the LRI facility.

Following soil removal, an STS site assessor collected a representative soil sample from the southwest corner of the excavation at a depth beneath the replacement water line (Sample location AI). The sample collection depth was also below that of the previously collected Sample AH. The sample was handled in the same manner as all those collected previously and submitted to Friedman & Bruya.

Friedman & Bruya analyzed the sample according to Method NWTPH-Dx. TPH-D/Motor Oil was not detected in the sample, confirming the west portion of the final excavation was free of petroleum impacts.

At the request of STS, Friedman & Bruya subjected the sample collected from the north end of the east wall (Sample location AF) to the Washington State Department of Ecology EPH analysis and risk calculation in an effort to determine whether the petroleum fractions representing the greatest health and environmental risk might exist at the sampled location at a combined concentration lower than the applicable MTCA Method A Cleanup Standard. The analytical result and risk calculation determined the soils at the sampled location did not represent a risk to human health or the environment. The result of the EPH analysis and risk determination also suggest those sampled locations with remaining petroleum impacts at levels below that of the sample subjected to the EPH analysis also represented no risk to human health or the environment.

Based on the analytical results for the soil samples collected from the final UST #1 excavation, along with the results of the EPH analysis and risk calculation, no additional remedial actions were required related to the release of petroleum product from the UST. The excavation was backfilled with clean imported pit run, over which was placed topsoil to match the surrounding grade.

3.02 UST #2

Based on the analytical result for the soil sample collected following UST removal, STS used a tracked excavator to remove 94.53 tons of petroleum-impacted soils from the UST removal pit. The soils were transported to LRI.

During the course of soil removal, an STS assessor collected six representative soil samples from various points of the excavation and an additional three samples from the stockpile of presumed clean overburden soils. The locations for the samples collected from the UST #2 excavation are shown as F- K on the site diagram, while those collected from the stockpile are shown as M - O. Each sample was handled in the same manner as those collected previously and submitted to Friedman & Bruya.

Friedman & Bruya analyzed the samples according to Method NWTPH-Dx. TPH-D/Motor Oil was detected in three of the samples collected from the excavation, one of which contained the analyte at a concentration exceeding the applicable MTCA Method A Cleanup Standard. That sample was collected from the east wall of the excavation (Sample location I -- 5,600 ppm). The samples in which the targeted analyte were detected at levels lower than the cleanup standard came from the north wall (Sample location J - 830 ppm) and the

UST REMOVALS
10816 18TH AVENUE E
TACOMA, WASHINGTON
STS Project ST5693 - October 12, 2011

northeast corner (Sample location K – 560 ppm). TPH-D/Motor Oil was not detected in any of the samples collected from the stockpiled soils.

No more material could be safely removed from the east wall without risking damage to the structure of the outbuilding. The STS assessor used a hand auger to collect two soil samples from points one foot and two feet into the east wall. The sample collection locations are shown as S and T on the site diagram. The samples were handled in the same manner as those collected previously and submitted to Friedman & Bruya.

Friedman & Bruya analyzed the samples according to Method NWTPH-Dx. TPH-D/Motor Oil was detected in both samples at concentrations exceeding the applicable MTCA Method A Cleanup Standard. The sample collected from one foot inside the wall (Sample location S) contained the analyte at a concentration of 12,000 ppm, while that collected from two feet inside the wall (Sample location T) contained the analyte at a concentration of 2,900 ppm. The analytical results confirmed petroleum impacts extended to at approximately two feet within the east wall of the excavation.

Based on the outcome of the EPH analysis and risk calculation conducted for the sample collected from north portion of the east wall of the excavation for UST #1 (3,400 ppm), it is suggested that the level of TPH-D/Motor Oil at Sample location T is also protective of human health and the environment.

As all other sampled locations of the excavation met the cleanup standard, and no additional material could be safely removed from the east wall, STS backfilled the excavation with the confirmed clean stockpiled soils along with clean imported pit run, over which was placed clean topsoil.

3.03 UST #3

Based on the analytical result for the soil sample collected following UST removal, STS used a tracked excavator to remove 153.60 tons of petroleum-impacted soils from the UST removal pit. The soils were transported to LRI.

During the course of soil removal, an STS assessor collected nine representative soil samples from various points of the excavation and an additional three samples from the stockpile of presumed clean overburden soils. The locations for the samples collected from the UST #3 excavation are shown as P-R, U-Y, and AC on the site diagram, while those collected from the stockpile are shown as Z – AB. Each sample was handled in the same manner as those collected previously and submitted to Friedman & Bruya.

Friedman & Bruya analyzed the samples according to Method NWTPH-Dx. TPH-D/Motor Oil was detected in five of the samples collected from the excavation, four of which contained the analyte at a concentration exceeding the applicable MTCA Method A Cleanup Standard. Those samples were collected from north wall of the excavation beneath the building footing (Sample location Q – 17,000 ppm), an area from which no additional material could be safely removed, the west bottom (Sample location R – 5,400 ppm), and area from which material was later removed, the east end of the south wall (Sample location V – 13,000 ppm), an area that could not be excavated further as it was under an adjoining roadway, and the west end of the north wall (Sample location X – 7,800 ppm) an area from which no additional material could be safely removed.

UST REMOVALS
10816 18TH AVENUE E
TACOMA, WASHINGTON
STS Project ST5693 - October 12, 2011

TPH-D/Motor Oil was detected at a concentration lower than the cleanup standard in one sample. That sample came from the west end of the south wall of the excavation (Sample location Y - 880 ppm).

Two samples collected from the stockpile of presumed clean overburden soils contained the analyte at concentrations lower than the applicable cleanup standard. Those samples were Sample location AA - 190 ppm and Sample location AB - 84 ppm. TPH-D/Motor Oil was not detected in the at Sample location Z, also within the stockpile of overburden soils.

Based on the analytical results for all the soil samples, and the inability to safely remove remaining impacted material from the north and south walls, the excavation was backfilled with the confirmed clean overburden soils along with clean imported pit run, over which was placed clean topsoil.

4.0 Conclusions

After the removal of three heating Oil USTs from separate locations on the Subject Property, followed by the confirmation of petroleum releases at all three locations, STS used a tracked excavator to remove a combined total of 302.76 tons of petroleum-impacted soils from the former UST locations. The analytical results for soil samples collected from the final excavations and an EPH analysis and risk determination for a soil sample in the UST #1 excavation confirmed all sampled locations were free of petroleum impacts at concentrations exceeding the applicable project cleanup standard except for points in the east wall of the UST #2 excavation, and the north and south walls of the UST #3 excavation, areas from which no additional material could be safely removed.

The excavations were backfilled with clean imported pit run along with confirmed clean stockpiled overburden soils, over which was placed clean topsoil.

An undetermined quantity of petroleum-impacted soils remains beneath structures adjacent to the former locations of UST #2 and UST #3. Should the buildings ever be demolished, the soils should be addressed at that time. Groundwater was not encountered anytime during the course of the project.

UST REMOVALS
10816 18TH AVENUE E
TACOMA, WASHINGTON
STS Project ST5693 - October 12, 2011


Work by STS associated with this task was performed, and this report was prepared in accordance with generally accepted professional practices for work of this nature, at the time it was performed. No warranty, expressed or implied, is made. Should you have any questions regarding this report or any of the activities and analytical results documented herein, please do not hesitate to contact me.

Respectfully submitted:
STS Company Inc.



James C. Leonard, ICC Certified Site Assessor

October 12, 2011



Phil Suetens, President

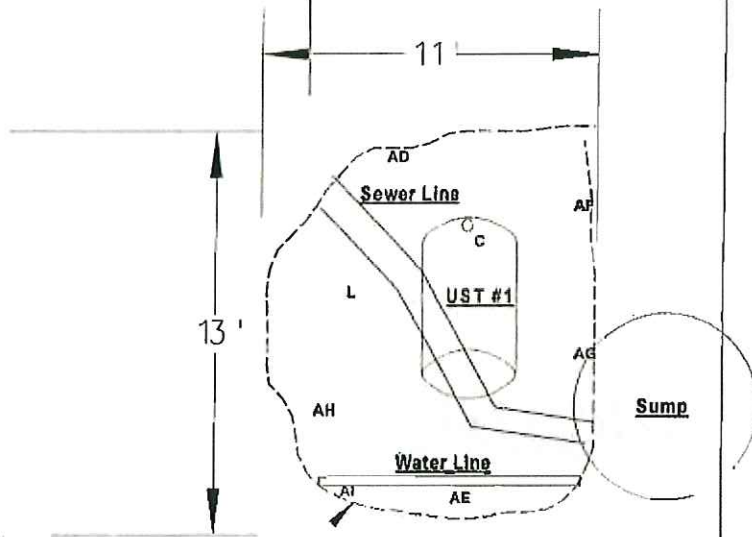
References

1. Guidance for Remediation of Petroleum Contaminated Soils - Washington State Department of Ecology Toxics Cleanup Program, Revised April 2003
2. Guidance for Remediation of Releases from Underground Storage Tanks - Washington State Department of Ecology Toxics Cleanup Program, July 1991
3. Guidance for Site Checks and Site Assessments for Underground Storage Tanks - Washington State Department of Ecology, Revised October 1992
4. Washington State Model Toxics Control Act - Chapter 173-340 WAC
5. Underground Storage Tank Regulations - Chapter 173-360 WAC

FIGURES

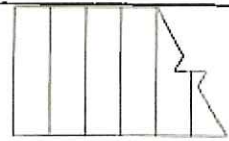
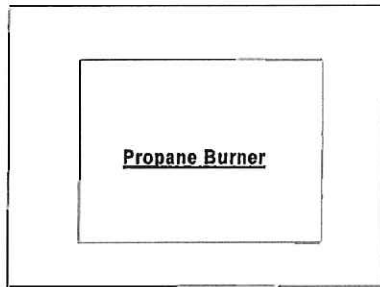


To 18th Avenue E →

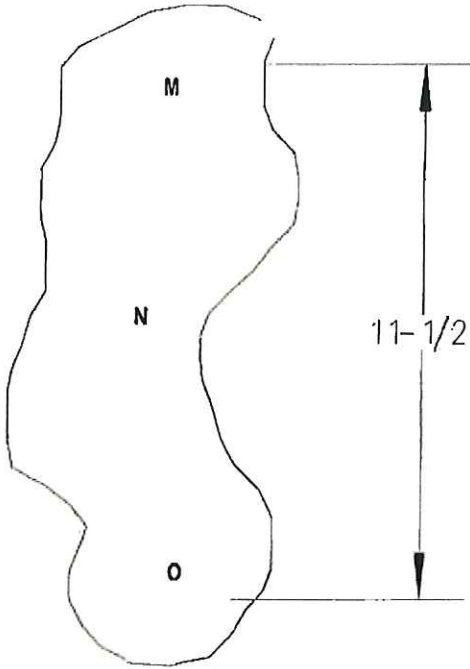


10816 18th Avenue E

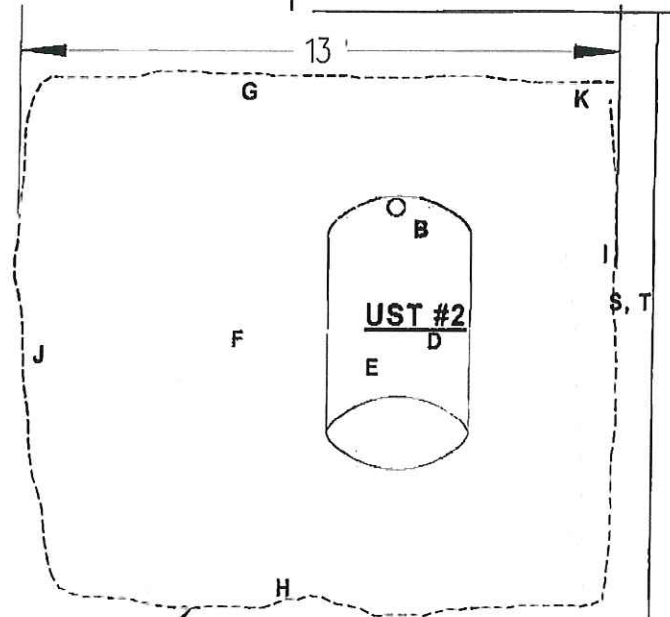
Boundary of Excavation



Overburden
Soils Stockpile



11-1/2'



13'

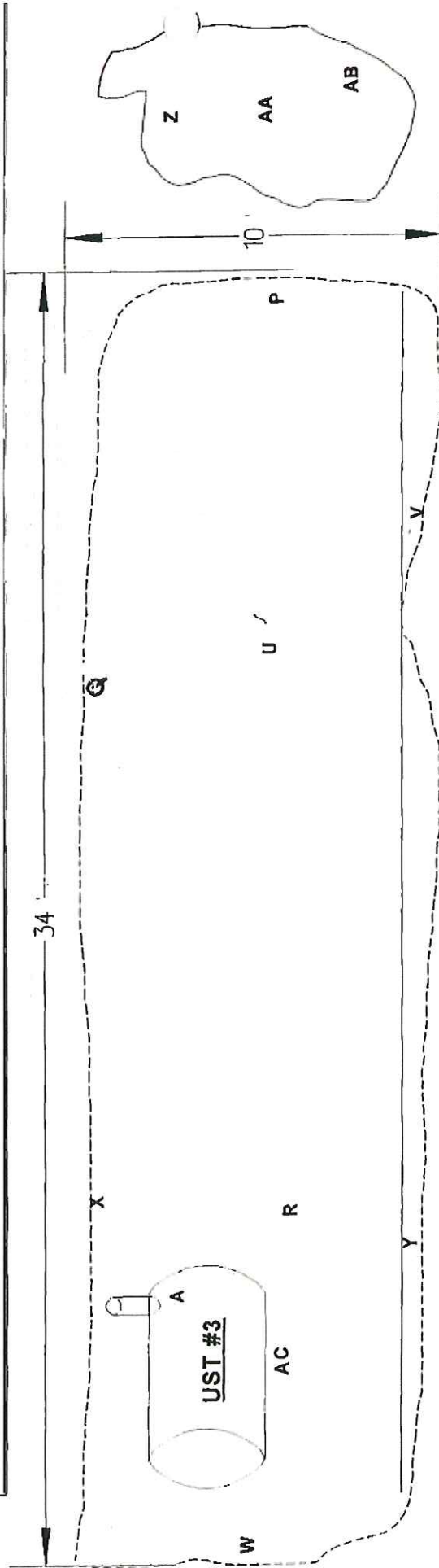
Boundary of
Excavation

Building

To 18th Avenue E →

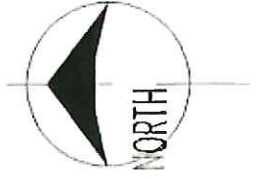


Building



Boundary of Excavation

To 18th Avenue E





FILCO COMPANY INC.
SITE PHOTOGRAPHS



Photograph 1. Removed UST #1



Photograph 2. Corrosion Hole in UST #1



Photograph 3. UST #1 Removal Pit



Photograph 4. UST #1 Final Excavation



Photograph 5. Backfilled UST #1 Excavation



Photograph 6. Restored Former UST# 1 Location



FILCO COMPANY INC.
SITE PHOTOGRAPHS



Photograph 7. Removed UST #2



Photograph 8. Corrosion Hole in UST #2



Photograph 9. UST #2 Removal Pit



Photograph 10. UST #2 Final Excavation



Photograph 11. Partially Backfilled UST #2 Excavation



Photograph 12. Restored Former UST #2 Location



**FILCO COMPANY INC.
SITE PHOTOGRAPHS**



Photograph 13. Removing UST #3



Photograph 14. Corrosion Hole in UST #3



Photograph 15. UST #3 Excavating Petroleum-Impacted Soils



Photograph 16. UST #3 Final Excavation



Photograph 17. Backfilling UST #3 Excavation



Photograph 18. Restored Former UST# 3 Location

**APPENDIX A
LABORATORY ANALYTICAL
CERTIFICATES**

UST Removals 10816 18th Avenue E, Tacoma, Washington
Analytical Results for Soil Samples Collected from Former UST Locations

Sample Location on Project Detail Diagram	Sample ID	Sampling Date	Sample Location	WTPH-D	IR Scan	Status of Soil
A	UST 3 Tank Pit 1	7/1/2011	12" Below Bottom of UST #3 Removal Pit	43,000	NA	Removed
B	UST 2 Tank Pit 1	7/1/2011	12" Below Bottom of UST #2 Removal Pit	1,600	NA	Removed*
C	UST 1 Tank Pit 1	7/1/2011	12" Below Bottom of UST #3 Removal Pit	13,000	NA	Removed
D	UST 2 Tank Pit 2	7/1/2011	12" Below Bottom of UST #2 Removal Pit	3,900	NA	Removed
E	UST 2 Tank Pit 3	7/1/2011	12" Below Bottom of UST #2 Removal Pit	1,500	NA	Removed*
F	No. 2 Base 11'	9/13/2011	Bottom of UST #2 Excavation -- 11' Deep	<50	NA	Remaining
G	No 2 North-8'	9/13/2011	North Wall of UST #2 Excavation -- 8' Deep	<50	NA	Remaining
H	No 2 South-8'	9/13/2011	South Wall of UST #2 Excavation -- 8' Deep	<50	NA	Remaining
I	No 2 East Below Footing	9/13/2011	East Wall of UST #2 Excavation Beneath Footing-- 6' Deep	5,600	NA	Remaining**
J	No 2 West-8'	9/13/2011	North Wall of UST #2 Excavation -- 8' Deep	830	NA	Remaining
K	No 2 Northeast Corner-8'	9/13/2011	NW Corner of UST #2 Excavation -- 8' Deep	560	NA	Remaining
L	No 1 End of Day	9/13/2011	Bottom of UST #1 Removal Pit -- 8' Deep	2,200	NA	Remaining
M	#2 Stockpile 1	9/14/2011	UST #2 Excavation Overburden Soils Stockpile	<50	NA	Remaining
N	#2 Stockpile 2	9/14/2011	UST #2 Excavation Overburden Soils Stockpile	<50	NA	Remaining
O	#2 Stockpile 3	9/14/2011	UST #2 Excavation Overburden Soils Stockpile	<50	NA	Remaining
P	#3 East 8'	9/14/2011	East Wall of UST #3 Excavation -- 8' Deep	<50	NA	Remaining
Q	#3 North Beneath Footing	9/14/2011	North Wall of UST #3 Excavation -- Beneath Footing	17,000	NA	Remaining**
R	#3 End of Day	9/14/2011	West Bottom of UST #3 Excavation -- 9' Deep	5,400	NA	Removed
S	#2 East Wall 1'	9/15/2011	1' Within East Wall of UST #2 Excavation Below Footing	12,000	NA	Remaining**
T	#2 East Wall 2'	9/15/2011	2' Within East Wall of UST #2 Excavation Below Footing	2,900	NA	Remaining**
U	#3 East Bottom 10'	9/16/2011	East End of Bottom of UST #3 Excavation -- 10' Deep	<50	NA	Remaining
V	#3 South Wall East End -- 6'	9/16/2011	East End of South Wall of UST #3 Excavation 6' Deep	13,000	NA	Remaining
W	#3 West Wall 7'	9/16/2011	West Wall of UST #3 Excavation -- 6' Deep	<50	NA	Remaining
X	#3 North Wall West End at Footing	9/16/2011	West End of North Wall of UST #3 Excavation -- 7' Deep	7,800	NA	Remaining
Y	#3 South Wall West End - 7'	9/16/2011	West End of South Wall of UST #3 Excavation -- 7' Deep	880	NA	Remaining
Z	#3 Stockpile 1	9/16/2011	UST #3 Excavation Overburden Soils Stockpile	<50	NA	Remaining
AA	#3 Stockpile 2	9/16/2011	UST #3 Excavation Overburden Soils Stockpile	190	NA	Remaining
AB	#3 Stockpile 3	9/16/2011	UST #3 Excavation Overburden Soils Stockpile	84	NA	Remaining
AC	#3 West Bottom -- 11'	9/16/2011	West End of Bottom of UST #3 Excavation -- 11' Deep	<50	NA	Remaining
AD	No 1 North-7'	9/19/2011	North Wall of UST #1 Excavation -- 7' Deep	780	NA	Remaining
AE	No 1 South-7'	9/19/2011	South Wall of UST #1 Excavation -- 7' Deep	2,300	NA	Remaining
AF	No 1 East-N End-7'	9/19/2011	North End of East Wall of UST #1 Excavation - 7' Deep	3,400	NA	Remaining**
AG	No 1 East-S End-7'	9/19/2011	South End of East Wall of UST #1 Excavation - 7' Deep	1,300	NA	Remaining**
AH	No 1 West-7'	9/19/2011	West Wall of UST #1 Excavation -- 7' Deep	4,300	NA	Removed
AI	No Under H2O Pipe	9/20/2011	Beneath Water Pipe	<50	NA	Remaining
MTCR Method A Soil Cleanup Standard				2,000		

All analytical results are in micrograms/gram (ppm).
Bold = The result exceeds the applicable project cleanup standard
NA = The analysis was not performed on this sample.
* The soils were removed to access underlying petroleum impacted material
** No additional material could be removed without risk of damage to the building

FRIEDMAN & BRUYA, INC.

ENVIRONMENTAL CHEMISTS

James E. Bruya, Ph.D.
Charlene Morrow, M.S.
Yelena Aravkina, M.S.
Bradley T. Benson, B.S.
Kurt Johnson, B.S.

3012 16th Avenue West
Seattle, WA 98119-2029
TEL: (206) 285-8282
FAX: (206) 283-5044
e-mail: fbi@isomedia.com

July 6, 2011

James Leonard, Project Manager
Seattle Tank Services
PO Box 31516
Seattle, WA 98103

Dear Mr. Leonard:

Included are the results from the testing of material submitted on July 1, 2011 from the 10816 18th Avenue E, F&BI 107028 project. There are 3 pages included in this report. Any samples that may remain are currently scheduled for disposal in 30 days. If you would like us to return your samples or arrange for long term storage at our offices, please contact us as soon as possible.

We appreciate this opportunity to be of service to you and hope you will call if you should have any questions.

Sincerely,

FRIEDMAN & BRUYA, INC.



Matthew Langston
Project Manager

Enclosures
STK0706R.DOC

FRIEDMAN & BRUYA, INC.

ENVIRONMENTAL CHEMISTS

Date of Report: 07/06/11
Date Received: 07/01/11
Project: 10816 18th Avenue E, F&BI 107028
Date Extracted: 07/05/11
Date Analyzed: 07/05/11

**RESULTS FROM THE ANALYSIS OF SOIL SAMPLES
FOR TOTAL PETROLEUM HYDROCARBONS AS DIESEL
USING METHOD NWTPH-Dx
Extended to Include Motor Oil Range Compounds
Results Reported on a Dry Weight Basis
Results Reported as mg/kg (ppm)**

<u>Sample ID</u> Laboratory ID	<u>Diesel Extended</u> (C ₁₀ -C ₃₆)	<u>Surrogate</u> (% Recovery) (Limit 50-150)
UST 3- Tank Pit 1 107028-01	43,000	112
UST 2 Tank Pit 1 107028-07	1,600	144
UST 1- Tank Pit 1 107028-13	13,000	131
Method Blank 01-1200 MB	<50	124

FRIEDMAN & BRUYA, INC.

ENVIRONMENTAL CHEMISTS

Date of Report: 07/06/11

Date Received: 07/01/11

Project: 10816 18th Avenue E, F&BI 107028

**QUALITY ASSURANCE RESULTS FROM THE ANALYSIS OF SOIL SAMPLES
FOR TOTAL PETROLEUM HYDROCARBONS AS
DIESEL EXTENDED USING METHOD NWTPH-Dx**

Laboratory Code: 107020-03 (Matrix Spike)

Analyte	Reporting Units	Spike Level	(Wet wt) Sample Result	Percent Recovery MS	Percent Recovery MSD	Acceptance Criteria	RPD (Limit 20)
Diesel Extended	mg/kg (ppm)	5,000	<50	108	107	63-146	1

Laboratory Code: Laboratory Control Sample

Analyte	Reporting Units	Spike Level	Percent Recovery LCS	Acceptance Criteria
Diesel Extended	mg/kg (ppm)	5,000	107	79-144

FRIEDMAN & BRUYA, INC.

ENVIRONMENTAL CHEMISTS

Data Qualifiers & Definitions

a - The analyte was detected at a level less than five times the reporting limit. The RPD results may not provide reliable information on the variability of the analysis.

A1 - More than one compound of similar molecule structure was identified with equal probability.

b - The analyte was spiked at a level that was less than five times that present in the sample. Matrix spike recoveries may not be meaningful.

ca - The calibration results for this range fell outside of acceptance criteria. The value reported is an estimate.

c - The presence of the analyte indicated may be due to carryover from previous sample injections.

d - The sample was diluted. Detection limits may be raised due to dilution.

ds - The sample was diluted. Detection limits are raised due to dilution and surrogate recoveries may not be meaningful.

dv - Insufficient sample was available to achieve normal reporting limits and limits are raised accordingly.

fb - Analyte present in the blank and the sample.

fc - The compound is a common laboratory and field contaminant.

hr - The sample and duplicate were reextracted and reanalyzed. RPD results were still outside of control limits. The variability is attributed to sample inhomogeneity.

ht - Analysis performed outside the method or client-specified holding time requirement.

ip - Recovery fell outside of normal control limits. Compounds in the sample matrix interfered with the quantitation of the analyte.

j - The result is below normal reporting limits. The value reported is an estimate.

J - The internal standard associated with the analyte is out of control limits. The reported concentration is an estimate.

jl - The analyte result in the laboratory control sample is out of control limits. The reported concentration should be considered an estimate.

jr - The rpd result in laboratory control sample associated with the analyte is out of control limits. The reported concentration should be considered an estimate.

js - The surrogate associated with the analyte is out of control limits. The reported concentration should be considered an estimate.

lc - The presence of the compound indicated is likely due to laboratory contamination.

L - The reported concentration was generated from a library search.

nm - The analyte was not detected in one or more of the duplicate analyses. Therefore, calculation of the RPD is not applicable.

pc - The sample was received in a container not approved by the method. The value reported should be considered an estimate.

pr - The sample was received with incorrect preservation. The value reported should be considered an estimate.

ve - Estimated concentration calculated for an analyte response above the valid instrument calibration range. A dilution is required to obtain an accurate quantification of the analyte.

vo - The value reported fell outside the control limits established for this analyte.

x - The sample chromatographic pattern does not resemble the fuel standard used for quantitation.

TO: 07-01-11 ME 07-01-11 A04

Page # 1 of 2

TURNAROUND TIME
Standard (2 Weeks)
RUSH
Rush charges authorized by:

SAMPLE DISPOSAL
Dispose after 30 days
Return samples
Will call with instructions

SAMPLERS (signature) *[Signature]* PO #

PROJECT NAME/NO.

10816 18th Avenue E

REMARKS
Please fax results

Send Report To James C. Leonard

Company Seattle Tank Services.

Address PO Box 31516

City, State, ZIP Seattle, WA 98103

Phone # (206) 938-2280 Fax # (206) 933-1967

Sample ID	Lab ID	Date	Time	Sample Type	# of containers	ANALYSES REQUESTED						Notes		
						TPH-Diesel	TPH-Gasoline	BTEX by 8021B	VOCs by 8260	SVOCs by 8270	HFS			
UST 3- Tank Pit 1	01	7/1/11	09:30	Soil	1	<input checked="" type="checkbox"/>								
UST 3- Tank Pit 2	02	7/1/11	09:30	Soil	1	<input checked="" type="checkbox"/>								Hold
UST 3- Tank Pit 3	03	7/1/11	09:30	Soil	1	<input checked="" type="checkbox"/>								Hold
UST 3 Stockpile 1	04	7/1/11	09:30	Soil	1	<input checked="" type="checkbox"/>								Hold
UST 3 Stockpile 2	05	7/1/11	09:30	Soil	1	<input checked="" type="checkbox"/>								Hold
UST 3 Stockpile 3	06	7/1/11	09:30	Soil	1	<input checked="" type="checkbox"/>								Hold
UST 2 Tank Pit 1	07	7/1/11	10:30	Soil	1	<input checked="" type="checkbox"/>								Hold
UST 2 Tank Pit 2	08	7/1/11	10:30	Soil	1	<input checked="" type="checkbox"/>								Hold
UST 2 Tank Pit 3	09	7/1/11	10:30	Soil	1	<input checked="" type="checkbox"/>								Hold
UST 2 Stockpile 1	10	7/1/11	10:30	Soil	1	<input checked="" type="checkbox"/>								Hold

Friedman & Bruya, Inc. 3012 16th Avenue West Seattle, WA 98119-2029 Ph. (206) 285-8282 Fax (206) 283-5044	SIGNATURE <i>[Signature]</i>	PRINT NAME James C. Leonard	COMPANY Seattle Tank Service	DATE 7/1/11	TIME 1350
Relinquished by:	<i>[Signature]</i>				
Received by:	<i>[Signature]</i>	Matt Langsta	FBI	7/1/11	1350
Relinquished by:					
Received by:					

TD 70206

SAMPLE CHAIN OF CUSTODY

ME 07-01-11

#04

Page # 2 of 2

Send Report To James C. Leonard
 Company Seattle Tank Services.
 Address PO Box 31516
 City, State, ZIP Seattle, WA 98103
 Phone # (206) 938-2280 Fax # (206) 933-1967

SAMPLES (signature) [Signature]
 PROJECT NAME/NO. [Blank] PO # [Blank]
 10816 18th Avenue E
 REMARKS
 Please fax results

TURNAROUND TIME
 Standard (2 Weeks)
 RUSH
 Rush charges authorized by:
 SAMPLE DISPOSAL,
 Dispose after 30 days
 Return samples
 Will call with instructions

Sample ID	Lab ID	Date	Time	Sample Type	# of containers	ANALYSES REQUESTED						Notes
						TPH-Diesel	TPH-Gasoline	BTEX by 8021B	VOCs by 8260	SVOCs by 8270	HFS	
UST 2 Stockpile 2	11	7/1/11	10:30	Soil	1	<input checked="" type="checkbox"/>						Hold
UST 2 Stockpile 3	12	7/1/11	10:30	Soil	1	<input checked="" type="checkbox"/>						Hold
UST 1- Tank Pit 1	13	7/1/11	12:30	Soil	1	<input checked="" type="checkbox"/>						Hold
UST 1- Tank Pit 2	14	7/1/11	12:30	Soil	1	<input checked="" type="checkbox"/>						Hold
UST 1- Tank Pit 3	15	7/1/11	12:30	Soil	1	<input checked="" type="checkbox"/>						Hold
UST 1 Stockpile 1	16	7/1/11	12:30	Soil	1	<input checked="" type="checkbox"/>						Hold
UST 1 Stockpile 2	17	7/1/11	12:30	Soil	1	<input checked="" type="checkbox"/>						Hold
UST 1 Stockpile 3	18	7/1/11	12:30	Soil	1	<input checked="" type="checkbox"/>						Hold
						<input type="checkbox"/>						
						<input type="checkbox"/>						

SIGNATURE	PRINT NAME	COMPANY	DATE	TIME
Relinquished by: <u>[Signature]</u>	James C. Leonard	Seattle Tank Service	7/1/11	1550
Received by: <u>[Signature]</u>	<u>[Signature]</u>	<u>[Signature]</u>	7/1/11	1550
Relinquished by:				
Received by:		Samples received at: <u>[Signature]</u>		

Friedman & Bruya, Inc.
 3012 16th Avenue West
 Seattle, WA 98119-2029
 Ph. (206) 285-8282
 Fax (206) 283-5044

FRIEDMAN & BRUYA, INC.

ENVIRONMENTAL CHEMISTS

James E. Bruya, Ph.D.
Charlene Morrow, M.S.
Yelena Aravkina, M.S.
Bradley T. Benson, B.S.
Kurt Johnson, B.S.

3012 16th Avenue West
Seattle, WA 98119-2029
TEL: (206) 285-8282
FAX: (206) 283-5044
e-mail: fbi@isomedia.com

July 8, 2011

James Leonard, Project Manager
Seattle Tank Services
PO Box 31516
Seattle, WA 98103

Dear Mr. Leonard:

Included are the additional results from the testing of material submitted on July 1, 2011 from the 10816 18th Avenue E, F&BI 107028 project. There are 3 pages included in this report.

We appreciate this opportunity to be of service to you and hope you will call if you should have any questions.

Sincerely,

FRIEDMAN & BRUYA, INC.



Matthew Langston
Project Manager

Enclosures
STK0708R.DOC

Date of Report: 07/08/11
Date Received: 07/01/11
Project: 10816 18th Avenue E, F&BI 107028
Date Extracted: 07/07/11
Date Analyzed: 07/08/11

**RESULTS FROM THE ANALYSIS OF SOIL SAMPLES
FOR TOTAL PETROLEUM HYDROCARBONS AS DIESEL
USING METHOD NWTPH-Dx
Extended to Include Motor Oil Range Compounds
Results Reported on a Dry Weight Basis
Results Reported as mg/kg (ppm)**

<u>Sample ID</u> Laboratory ID	<u>Diesel Extended</u> (C ₁₀ -C ₂₆)	<u>Surrogate</u> <u>(% Recovery)</u> (Limit 50-150)
UST 2 Tank Pit 2 107028-08	3,900	107
UST 2 Tank Pit 3 107028-09	1,500	106
Method Blank 01-1214 MB	<50	113

FRIEDMAN & BRUYA, INC.

ENVIRONMENTAL CHEMISTS

Date of Report: 07/08/11

Date Received: 07/01/11

Project: 10816 18th Avenue E, F&BI 107028

**QUALITY ASSURANCE RESULTS FROM THE ANALYSIS OF SOIL SAMPLES
FOR TOTAL PETROLEUM HYDROCARBONS AS
DIESEL EXTENDED USING METHOD NWTPH-Dx**

Laboratory Code: 107057-02 (Matrix Spike)

Analyte	Reporting Units	Spike Level	(Wet wt) Sample Result	Percent Recovery MS	Percent Recovery MSD	Acceptance Criteria	RPD (Limit 20)
Diesel Extended	mg/kg (ppm)	5,000	<50	106	113	73-135	6

Laboratory Code: Laboratory Control Sample

Analyte	Reporting Units	Spike Level	Percent Recovery LCS	Acceptance Criteria
Diesel Extended	mg/kg (ppm)	5,000	106	74-139

FRIEDMAN & BRUYA, INC.

ENVIRONMENTAL CHEMISTS

Data Qualifiers & Definitions

a - The analyte was detected at a level less than five times the reporting limit. The RPD results may not provide reliable information on the variability of the analysis.

A1 - More than one compound of similar molecule structure was identified with equal probability.

b - The analyte was spiked at a level that was less than five times that present in the sample. Matrix spike recoveries may not be meaningful.

ca - The calibration results for this range fell outside of acceptance criteria. The value reported is an estimate.

c - The presence of the analyte indicated may be due to carryover from previous sample injections.

d - The sample was diluted. Detection limits may be raised due to dilution.

ds - The sample was diluted. Detection limits are raised due to dilution and surrogate recoveries may not be meaningful.

dv - Insufficient sample was available to achieve normal reporting limits and limits are raised accordingly.

fb - Analyte present in the blank and the sample.

fc - The compound is a common laboratory and field contaminant.

hr - The sample and duplicate were reextracted and reanalyzed. RPD results were still outside of control limits. The variability is attributed to sample inhomogeneity.

ht - Analysis performed outside the method or client-specified holding time requirement.

ip - Recovery fell outside of normal control limits. Compounds in the sample matrix interfered with the quantitation of the analyte.

j - The result is below normal reporting limits. The value reported is an estimate.

J - The internal standard associated with the analyte is out of control limits. The reported concentration is an estimate.

jl - The analyte result in the laboratory control sample is out of control limits. The reported concentration should be considered an estimate.

jr - The rpd result in laboratory control sample associated with the analyte is out of control limits. The reported concentration should be considered an estimate.

js - The surrogate associated with the analyte is out of control limits. The reported concentration should be considered an estimate.

lc - The presence of the compound indicated is likely due to laboratory contamination.

L - The reported concentration was generated from a library search.

nm - The analyte was not detected in one or more of the duplicate analyses. Therefore, calculation of the RPD is not applicable.

pc - The sample was received in a container not approved by the method. The value reported should be considered an estimate.

pr - The sample was received with incorrect preservation. The value reported should be considered an estimate.

ve - Estimated concentration calculated for an analyte response above the valid instrument calibration range. A dilution is required to obtain an accurate quantification of the analyte.

vo - The value reported fell outside the control limits established for this analyte.

x - The sample chromatographic pattern does not resemble the fuel standard used for quantitation.

107028

SAMPLE CHAIN OF CUSTODY ME 07-01-11

A04

Send Report To James C. Leonard
 Company Seattle Tank Services
 Address P.O. Box 31516
 City, State, ZIP Seattle, WA 98103
 Phone # (206) 938-2280 Fax # (206) 933-1967

SAMPLES (signature) _____ PO # _____
 PRODUCT NAME/NO. _____
 10816 18th Avenue E.
 REMARKS
 Please fax results

TURNAROUND TIME
 Standard (2 Weeks)
 RUSH
 Rush charges authorized by: _____
 SAMPLE DISPOSAL,
 Dispose after 30 days
 Return samples
 Will call with instructions

Page # 1 of 2

Sample ID	Lab ID	Date	Time	Sample Type	# of containers	ANALYSSES REQUESTED					Notes	
						TPH-Diesel	TPH-Gasoline	BTEX by 8021B	VOCs by 8260	SVOCs by 8270		HFS
UST 3- Tank Pit 1	01	7/1/11	09:30	Soil	1	<input checked="" type="checkbox"/>						
UST 3- Tank Pit 2	02	7/1/11	09:30	Soil	1	<input checked="" type="checkbox"/>						Hold
UST 3- Tank Pit 3	03	7/1/11	09:30	Soil	1	<input checked="" type="checkbox"/>						Hold
UST 3 Stockpile 1	04	7/1/11	09:30	Soil	1	<input checked="" type="checkbox"/>						Hold
UST 3 Stockpile 2	05	7/1/11	09:30	Soil	1	<input checked="" type="checkbox"/>						Hold
UST 3 Stockpile 3	06	7/1/11	09:30	Soil	1	<input checked="" type="checkbox"/>						Hold
UST 2 Tank Pit 1	07	7/1/11	10:30	Soil	1	<input checked="" type="checkbox"/>						
UST 2 Tank Pit 2	08	7/1/11	10:30	Soil	1	<input checked="" type="checkbox"/>						Hold - Analyze Per 317 m
UST 2 Tank Pit 3	09	7/1/11	10:30	Soil	1	<input checked="" type="checkbox"/>						Hold
UST 2 Stockpile 1	10	7/1/11	10:30	Soil	1	<input checked="" type="checkbox"/>						Hold

Friedman & Bruya, Inc.
 3012 16th Avenue West
 Seattle, WA 98119-2029
 Ph. (206) 285-8282
 Fax (206) 283-5044

Relinquished by: James C. Leonard SIGNATURE
 PRINT NAME: James C. Leonard
 COMPANY: Seattle Tank Service
 DATE: 7/1/11 TIME: 1350

Received by: Matt Leonard
 PRINT NAME: Matt Leonard
 COMPANY: F752ic
 DATE: 7/1/11 TIME: 1350

Relinquished by: _____
 Received by: _____

107078

SAMPLE CHAIN OF CUSTODY

ME 07-01-11

A04

Page # 2 of 2

TURNAROUND TIME
Standard (2 Weeks)
RUSH. _____
Rush charges authorized by: _____

SAMPLE DISPOSAL
Dispose after 30 days
Return samples
Will call with instructions

SAMPLES (signature) [Signature]

PROJECT NAME/NO. _____ PO # _____

10816 18th Avenue F

REMARKS
Please fax results

Send Report To James C. Leonard

Company Seattle Tank Services

Address PO Box 31516

City, State, ZIP Seattle, WA 98103

Phone # (206) 938-2280 Fax # (206) 933-1967

Sample ID	Lab ID	Date	Time	Sample Type	# of containers	ANALYSES REQUESTED						Notes	
						TPH-Diesel	TPH-Gasoline	BTEX by 8021B	VOCs by 8260	SVOCs by 8270	HFS		
UST 2 Stockpile 2	11	7/1/11	10:30	Soil	1	<input checked="" type="checkbox"/>							Hold
UST 2 Stockpile 3	12	7/1/11	10:30	Soil	1	<input checked="" type="checkbox"/>							Hold
UST 1 - Tank Pit 1	13	7/1/11	12:30	Soil	1	<input checked="" type="checkbox"/>							Hold
UST 1 - Tank Pit 2	14	7/1/11	12:30	Soil	1	<input checked="" type="checkbox"/>							Hold
UST 1 - Tank Pit 3	15	7/1/11	12:30	Soil	1	<input checked="" type="checkbox"/>							Hold
UST 1 Stockpile 1	16	7/1/11	12:30	Soil	1	<input checked="" type="checkbox"/>							Hold
UST 1 Stockpile 2	17	7/1/11	12:30	Soil	1	<input checked="" type="checkbox"/>							Hold
UST 1 Stockpile 3	18	7.1/11	12:30	Soil	1	<input checked="" type="checkbox"/>							Hold

SIGNATURE	PRINT NAME	COMPANY	DATE	TIME
Relinquished by: <u>[Signature]</u>	James C. Leonard	Seattle Tank Service	7/1/11	1550
Received by: <u>[Signature]</u>	<u>[Signature]</u>	ERTS	7/1/11	1350
Relinquished by:				
Received by:		Samples received at:		

Friedman & Bruya, Inc.
3012 16th Avenue West
Seattle, WA 98119-2029
Ph. (206) 285-8282
Fax (206) 283-5044

FRIEDMAN & BRUYA, INC.

ENVIRONMENTAL CHEMISTS

James E. Bruya, Ph.D.
Charlene Morrow, M.S.
Yelena Aravkina, M.S.
Bradley T. Benson, B.S.
Kurt Johnson, B.S.

4 Avenue West
WA 98119-2029
TEL: (206) 285-8282
FAX: (206) 283-5044
Email: fbi@isomedia.com

ST 8673

September 15, 2011

James Leonard, Project Manager
Filco Company, Inc.
PO Box 31228
Seattle, WA 98103

Dear Mr. Leonard:

Included are the results from the testing of material submitted on September 13, 2011 from the 10816 18th Ave E, F&BI 109172 project. There are 3 pages included in this report. Any samples that may remain are currently scheduled for disposal in 30 days. If you would like us to return your samples or arrange for long term storage at our offices, please contact us as soon as possible.

We appreciate this opportunity to be of service to you and hope you will call if you should have any questions.

Sincerely,

FRIEDMAN & BRUYA, INC.



Matthew Langston
Project Manager

Enclosures
FCI0915R.DOC

FRIEDMAN & BRUYA, INC.

ENVIRONMENTAL CHEMISTS

Date of Report: 09/15/11
Date Received: 09/13/11
Project: 10816 18th Ave E, F&BI 109172
Date Extracted: 09/13/11
Date Analyzed: 09/13/11

**RESULTS FROM THE ANALYSIS OF SOIL SAMPLES
FOR TOTAL PETROLEUM HYDROCARBONS AS DIESEL
USING METHOD NWTPH-Dx
Extended to Include Motor Oil Range Compounds
Results Reported on a Dry Weight Basis
Results Reported as mg/kg (ppm)**

<u>Sample ID</u> Laboratory ID	<u>Diesel Extended</u> (C ₁₀ -C ₃₆)	<u>Surrogate</u> (% Recovery) (Limit 50-150)
No 2 Base-11' 109172-01	<50	108
No 2 North-8' 109172-02	<50	119
No 2 South-8' 109172-03	<50	109
No 2 East-Below Footing 109172-04	5,600	114
No 2 West-8' 109172-05	830	111
No 2 Northeast Corner-8' 109172-06	560	117
No 1 End of Day 109172-07	2,200	119
Method Blank 01-1693 MB	<50	115

FRIEDMAN & BRUYA, INC.

ENVIRONMENTAL CHEMISTS

Date of Report: 09/15/11

Date Received: 09/13/11

Project: 10816 18th Ave E, F&BI 109172

**QUALITY ASSURANCE RESULTS FROM THE ANALYSIS OF SOIL SAMPLES
FOR TOTAL PETROLEUM HYDROCARBONS AS
DIESEL EXTENDED USING METHOD NWTPH-Dx**

Laboratory Code: 109159-01 (Matrix Spike)

Analyte	Reporting Units	Spike Level	(Wet wt) Sample Result	Percent Recovery MS	Percent Recovery MSD	Acceptance Criteria	RPD (Limit 20)
Diesel Extended	mg/kg (ppm)	5,000	<50	120	124	63-146	3

Laboratory Code: Laboratory Control Sample

Analyte	Reporting Units	Spike Level	Percent Recovery LCS	Acceptance Criteria
Diesel Extended	mg/kg (ppm)	5,000	113	79-144

ENVIRONMENTAL CHEMISTS

Data Qualifiers & Definitions

- a - The analyte was detected at a level less than five times the reporting limit. The RPD results may not provide reliable information on the variability of the analysis.
- A1 - More than one compound of similar molecule structure was identified with equal probability.
- b - The analyte was spiked at a level that was less than five times that present in the sample. Matrix spike recoveries may not be meaningful.
- ca - The calibration results for this range fell outside of acceptance criteria. The value reported is an estimate.
- c - The presence of the analyte indicated may be due to carryover from previous sample injections.
- d - The sample was diluted. Detection limits may be raised due to dilution.
- ds - The sample was diluted. Detection limits are raised due to dilution and surrogate recoveries may not be meaningful.
- dv - Insufficient sample was available to achieve normal reporting limits and limits are raised accordingly.
- fb - Analyte present in the blank and the sample.
- fc - The compound is a common laboratory and field contaminant.
- hr - The sample and duplicate were reextracted and reanalyzed. RPD results were still outside of control limits. The variability is attributed to sample inhomogeneity.
- ht - Analysis performed outside the method or client-specified holding time requirement.
- ip - Recovery fell outside of normal control limits. Compounds in the sample matrix interfered with the quantitation of the analyte.
- j - The result is below normal reporting limits. The value reported is an estimate.
- J - The internal standard associated with the analyte is out of control limits. The reported concentration is an estimate.
- jl - The analyte result in the laboratory control sample is out of control limits. The reported concentration should be considered an estimate.
- jr - The rpd result in laboratory control sample associated with the analyte is out of control limits. The reported concentration should be considered an estimate.
- js - The surrogate associated with the analyte is out of control limits. The reported concentration should be considered an estimate.
- lc - The presence of the compound indicated is likely due to laboratory contamination.
- L - The reported concentration was generated from a library search.
- nm - The analyte was not detected in one or more of the duplicate analyses. Therefore, calculation of the RPD is not applicable.
- pc - The sample was received in a container not approved by the method. The value reported should be considered an estimate.
- pr - The sample was received with incorrect preservation. The value reported should be considered an estimate.
- ve - Estimated concentration calculated for an analyte response above the valid instrument calibration range. A dilution is required to obtain an accurate quantification of the analyte.
- vo - The value reported fell outside the control limits established for this analyte.
- x - The sample chromatographic pattern does not resemble the fuel standard used for quantitation.

Standard (2 Weeks) **FAST**
 Rush charges authorized by: _____

SAMPLE DISPOSAL
 Dispose after 90 days
 Between samples
 Will call with instructions

SAMPLERS (signature) Jane. Jan PO # _____
 PROJECT NAME/NO. 1816 18th Ave E
 REMARKS _____

Send Report To Jane Leonard
 Company Trilio
 Address etc
 City, State, ZIP _____
 Phone # _____ Fax # _____

Sample ID	Lab ID	Date	Time	Sample Type	# of containers	ANALYSES REQUESTED					Notes	
						TPH Diesel	TPH Cassette	BTEX by 8021B	VOCs by 8260	SVOCs by 8270		HHS
No 2 Bare-11'	01	9/13/11	1345	Soil	1	X						
No 2 North-8'	02		1345		1							
No 2 South-8'	03		1345		1							
No 2 East -Below Footing	04		1345		1							5,644
No 2 West-8'	05		1345		1							830
No 2 Northeast Corner-8'/06	06		1345		1							560
No. 1-end of Day	07		1450		1							10 priority

Signature: Jane Leonard Company: Trilio DATE: 9/13/11 TIME: 1700
 Relinquished by: Jane Leonard COMPANY: Trilio DATE: 9/13/11 TIME: 1700
 Received by: Math Leonard COMPANY: Trilio
 Relinquished by: _____
 Received by: _____

Friedman & Bruya, Inc.
 3012 166th Avenue West
 Seattle, WA 98119-2029
 Ph. (206) 285-8882
 Fax (206) 285-5044
 FORMS-GCCWCC-DOC

Samples received at 22 °C

FRIEDMAN & BRUYA, INC.

ENVIRONMENTAL CHEMISTS

James E. Bruya, Ph.D.
Charlene Morrow, M.S.
Yelena Aravkina, M.S.
Bradley T. Benson, B.S.
Kurt Johnson, B.S.

3012 16th Avenue West
Seattle, WA 98119-2029
TEL: (206) 285-8282
FAX: (206) 283-5044
e-mail: fbi@isomedia.com

September 20, 2011

James Leonard, Project Manager
Filco Company, Inc.
PO Box 31228
Seattle, WA 98103

Dear Mr. Leonard:

Included are the results from the testing of material submitted on September 14, 2011 from the 10816 18th Ave E, F&BI 109192 project. There are 3 pages included in this report. Any samples that may remain are currently scheduled for disposal in 30 days. If you would like us to return your samples or arrange for long term storage at our offices, please contact us as soon as possible.

We appreciate this opportunity to be of service to you and hope you will call if you should have any questions.

Sincerely,

FRIEDMAN & BRUYA, INC.



Matthew Langston
Project Manager

Enclosures
FCI0920R.DOC

FRIEDMAN & BRUYA, INC.

ENVIRONMENTAL CHEMISTS

Date of Report: 09/20/11
Date Received: 09/14/11
Project: 10816 18th Ave E, F&BI 109192
Date Extracted: 09/15/11
Date Analyzed: 09/15/11

**RESULTS FROM THE ANALYSIS OF SOIL SAMPLES
FOR TOTAL PETROLEUM HYDROCARBONS AS DIESEL
USING METHOD NWTPH-Dx
Extended to Include Motor Oil Range Compounds
Results Reported on a Wet Weight Basis
Results Reported as mg/kg (ppm)**

<u>Sample ID</u> Laboratory ID	<u>Diesel Extended</u> (C ₁₀ -C ₃₆)	<u>Surrogate</u> (% Recovery) (Limit 53-144)
No. 2 Stockpile 109192-01	<50	89
No. 2 Stockpile 2 109192-02	<50	109
No. 2 Stockpile 3 109192-03	<50	114
No. 3 East-8' 109192-04	<50	112
No. 3 Beneath Footing 109192-05	17,000	110
No. 3 End of Day 109192-06	5,400	119
Method Blank 01-1700 MB	<50	116

FRIEDMAN & BRUYA, INC.

ENVIRONMENTAL CHEMISTS

Date of Report: 09/20/11
Date Received: 09/14/11
Project: 10816 18th Ave E, F&BI 109192

**QUALITY ASSURANCE RESULTS FROM THE ANALYSIS OF SOIL SAMPLES
FOR TOTAL PETROLEUM HYDROCARBONS AS
DIESEL EXTENDED USING METHOD NWTPH-Dx**

Laboratory Code: 109192-04 (Matrix Spike)

Analyte	Reporting Units	Spike Level	(Wet wt) Sample Result	Percent Recovery MS	Percent Recovery MSD	Acceptance Criteria	RPD (Limit 20)
Diesel Extended	mg/kg (ppm)	5,000	<50	117	116	64-133	1

Laboratory Code: Laboratory Control Sample

Analyte	Reporting Units	Spike Level	Percent Recovery LCS	Acceptance Criteria
Diesel Extended	mg/kg (ppm)	5,000	112	58-147

Data Qualifiers & Definitions

- a - The analyte was detected at a level less than five times the reporting limit. The RPD results may not provide reliable information on the variability of the analysis.
- A1 - More than one compound of similar molecule structure was identified with equal probability.
- b - The analyte was spiked at a level that was less than five times that present in the sample. Matrix spike recoveries may not be meaningful.
- ca - The calibration results for this range fell outside of acceptance criteria. The value reported is an estimate.
- c - The presence of the analyte indicated may be due to carryover from previous sample injections.
- d - The sample was diluted. Detection limits may be raised due to dilution.
- ds - The sample was diluted. Detection limits are raised due to dilution and surrogate recoveries may not be meaningful.
- dv - Insufficient sample was available to achieve normal reporting limits and limits are raised accordingly.
- fb - Analyte present in the blank and the sample.
- fc - The compound is a common laboratory and field contaminant.
- hr - The sample and duplicate were reextracted and reanalyzed. RPD results were still outside of control limits. The variability is attributed to sample inhomogeneity.
- ht - Analysis performed outside the method or client-specified holding time requirement.
- ip - Recovery fell outside of normal control limits. Compounds in the sample matrix interfered with the quantitation of the analyte.
- j - The result is below normal reporting limits. The value reported is an estimate.
- J - The internal standard associated with the analyte is out of control limits. The reported concentration is an estimate.
- jl - The analyte result in the laboratory control sample is out of control limits. The reported concentration should be considered an estimate.
- jr - The rpd result in laboratory control sample associated with the analyte is out of control limits. The reported concentration should be considered an estimate.
- js - The surrogate associated with the analyte is out of control limits. The reported concentration should be considered an estimate.
- lc - The presence of the compound indicated is likely due to laboratory contamination.
- L - The reported concentration was generated from a library search.
- nm - The analyte was not detected in one or more of the duplicate analyses. Therefore, calculation of the RPD is not applicable.
- pc - The sample was received in a container not approved by the method. The value reported should be considered an estimate.
- pr - The sample was received with incorrect preservation. The value reported should be considered an estimate.
- ve - Estimated concentration calculated for an analyte response above the valid instrument calibration range. A dilution is required to obtain an accurate quantification of the analyte.
- vo - The value reported fell outside the control limits established for this analyte.
- x - The sample chromatographic pattern does not resemble the fuel standard used for quantitation.

107172

AMT and Chlorine Or CUS Study

NE 09/14/11

1 of 1 AD

Send Report To James C. Leonard
 Company Filco Company Inc
 Address P O Box 31228
 City, State, ZIP Seattle, WA 98103
 Phone # 206 547-8347 Fax # 206 548 9352

SAMPLERS (signature) [Signature]
 PROJECT NAME/NO. 10816 18k Air K
 PO # Asm
 REMARKS Please see report by Asm

- TURNAROUND TIME
- Standard (2 Weeks)
 - RUSH
- Flush charges authorized by:
- SAMPLE DISPOSAL
- Dispose after 30 days
 - Return samples
 - Will call with instructions

Sample ID	Lab ID	Date	Time	Sample Type	# of containers	ANALYSES REQUESTED					Notes	
						TPH-Diesel	TPH-Gasoline	BTEX by 8021B	VOCs by 8260	SVOCs by 8270		HFS
#2 Strogovic 1	01	9/14/11	09:00	Sol	1	✓						
#2 Strogovic 2	02	9/14/11	09:00	Sol	1	✓						
#2 Strogovic 3	03	9/14/11	09:00	Sol	1							
#3 East-8	04	9/14/11	12:57	Sol	1	✓						#2
#3 East-8	05	9/14/11	14:35	Sol	1	✓						#1
#3 East-8	06	9/14/11	14:50	Sol	1	✓						

SIGNATURE	PRINT NAME	COMPANY	DATE	TIME
<u>[Signature]</u>	<u>Robert Jurek</u>	<u>Lab</u>	<u>9/14/11</u>	<u>17:10</u>
<u>[Signature]</u>	<u>Scott Bravette</u>	<u>FA5 Inc</u>	<u>9/14/11</u>	<u>14-10</u>
Relinquished by:				
Received by:				
Relinquished by:				
Received by:				

Friedman & Bruyo, Inc.
 3942 168th Avenue West
 Seattle, WA 98119-2029
 Ph. (206) 895-8282
 Fax (206) 895-5044
 FORMS 500-VOC.DOC.DOC

Samples received at 22 °C

FRIEDMAN & BRUYA, INC.

ENVIRONMENTAL CHEMISTS

James E. Bruya, Ph.D.
Charlene Morrow, M.S.
Yelena Aravkina, M.S.
Bradley T. Benson, B.S.
Kurt Johnson, B.S.

3012 16th Avenue West
Seattle, WA 98119-2029
TEL: (206) 285-8282
FAX: (206) 283-5044
e-mail: fbi@isomedia.com

September 21, 2011

James Leonard, Project Manager
Filco Company, Inc.
PO Box 31228
Seattle, WA 98103

Dear Mr. Leonard:

Included are the results from the testing of material submitted on September 16, 2011 from the 10816 18th Avenue E, F&BI 109236 project. There are 3 pages included in this report. Any samples that may remain are currently scheduled for disposal in 30 days. If you would like us to return your samples or arrange for long term storage at our offices, please contact us as soon as possible.

We appreciate this opportunity to be of service to you and hope you will call if you should have any questions.

Sincerely,

FRIEDMAN & BRUYA, INC.



Matthew Langston
Project Manager

Enclosures
FCI0921R.DOC

FRIEDMAN & BRUYA, INC.

ENVIRONMENTAL CHEMISTS

Date of Report: 09/21/11
Date Received: 09/16/11
Project: 10816 18th Avenue E, F&BI 109236
Date Extracted: 09/19/11
Date Analyzed: 09/19/11

**RESULTS FROM THE ANALYSIS OF SOIL SAMPLES
FOR TOTAL PETROLEUM HYDROCARBONS AS DIESEL
USING METHOD NWTPH-Dx
Extended to Include Motor Oil Range Compounds
Results Reported on a Dry Weight Basis
Results Reported as mg/kg (ppm)**

<u>Sample ID</u> Laboratory ID	<u>Diesel Extended</u> (C ₁₀ -C ₃₆)	<u>Surrogate</u> (% Recovery) (Limit 53-144)
2 East Wall +1' 109236-01	12,000	119
2 East Wall -2' 109236-02	2,900	103
Method Blank 01-1717 MB	<50	99

FRIEDMAN & BRUYA, INC.

ENVIRONMENTAL CHEMISTS

Date of Report: 09/21/11
Date Received: 09/16/11
Project: 10816 18th Avenue E, F&BI 109236

**QUALITY ASSURANCE RESULTS FROM THE ANALYSIS OF SOIL SAMPLES
FOR TOTAL PETROLEUM HYDROCARBONS AS
DIESEL EXTENDED USING METHOD NWTPH-Dx**

Laboratory Code: 109241-02 (Matrix Spike)

Analyte	Reporting Units	Spike Level	(Wet wt) Sample Result	Percent Recovery MS	Percent Recovery MSD	Acceptance Criteria	RPD (Limit 20)
Diesel Extended	mg/kg (ppm)	5,000	<50	87	90	64-133	3

Laboratory Code: Laboratory Control Sample

Analyte	Reporting Units	Spike Level	Percent Recovery LCS	Acceptance Criteria
Diesel Extended	mg/kg (ppm)	5,000	88	58-147

Data Qualifiers & Definitions

- a - The analyte was detected at a level less than five times the reporting limit. The RPD results may not provide reliable information on the variability of the analysis.
- A1 - More than one compound of similar molecule structure was identified with equal probability.
- b - The analyte was spiked at a level that was less than five times that present in the sample. Matrix spike recoveries may not be meaningful.
- ca - The calibration results for this range fell outside of acceptance criteria. The value reported is an estimate.
- c - The presence of the analyte indicated may be due to carryover from previous sample injections.
- d - The sample was diluted. Detection limits may be raised due to dilution.
- ds - The sample was diluted. Detection limits are raised due to dilution and surrogate recoveries may not be meaningful.
- dv - Insufficient sample was available to achieve normal reporting limits and limits are raised accordingly.
- fb - Analyte present in the blank and the sample.
- fc - The compound is a common laboratory and field contaminant.
- hr - The sample and duplicate were reextracted and reanalyzed. RPD results were still outside of control limits. The variability is attributed to sample inhomogeneity.
- ht - Analysis performed outside the method or client-specified holding time requirement.
- ip - Recovery fell outside of normal control limits. Compounds in the sample matrix interfered with the quantitation of the analyte.
- j - The result is below normal reporting limits. The value reported is an estimate.
- J - The internal standard associated with the analyte is out of control limits. The reported concentration is an estimate.
- jl - The analyte result in the laboratory control sample is out of control limits. The reported concentration should be considered an estimate.
- jr - The rpd result in laboratory control sample associated with the analyte is out of control limits. The reported concentration should be considered an estimate.
- js - The surrogate associated with the analyte is out of control limits. The reported concentration should be considered an estimate.
- lc - The presence of the compound indicated is likely due to laboratory contamination.
- L - The reported concentration was generated from a library search.
- nm - The analyte was not detected in one or more of the duplicate analyses. Therefore, calculation of the RPD is not applicable.
- pc - The sample was received in a container not approved by the method. The value reported should be considered an estimate.
- pr - The sample was received with incorrect preservation. The value reported should be considered an estimate.
- ve - Estimated concentration calculated for an analyte response above the valid instrument calibration range. A dilution is required to obtain an accurate quantification of the analyte.
- vo - The value reported fell outside the control limits established for this analyte.
- x - The sample chromatographic pattern does not resemble the fuel standard used for quantitation.

FRIEDMAN & BRUYA, INC.

ENVIRONMENTAL CHEMISTS

James E. Bruya, Ph.D.
Charlene Morrow, M.S.
Yelena Aravkina, M.S.
Bradley T. Benson, B.S.
Kurt Johnson, B.S.

3012 16th Avenue West
Seattle, WA 98119-2029
TEL: (206) 285-8282
FAX: (206) 283-5044
e-mail: fbi@isomedia.com

September 21, 2011

James Leonard, Project Manager
Filco Company, Inc.
PO Box 31228
Seattle, WA 98103

Dear Mr. Leonard:

Included are the results from the testing of material submitted on September 19, 2011 from the 10816 18th Avenue E, F&BI 109250 project. There are 3 pages included in this report. Any samples that may remain are currently scheduled for disposal in 30 days. If you would like us to return your samples or arrange for long term storage at our offices, please contact us as soon as possible.

We appreciate this opportunity to be of service to you and hope you will call if you should have any questions.

Sincerely,

FRIEDMAN & BRUYA, INC.



Matthew Langston
Project Manager

Enclosures
FCI0921R.DOC

ENVIRONMENTAL CHEMISTS

Date of Report: 09/21/11
 Date Received: 09/19/11
 Project: 10816 18th Avenue E, F&BI 109250
 Date Extracted: 09/19/11
 Date Analyzed: 09/19/11

**RESULTS FROM THE ANALYSIS OF SOIL SAMPLES
 FOR TOTAL PETROLEUM HYDROCARBONS AS DIESEL
 USING METHOD NWTPH-D_x
 Extended to Include Motor Oil Range Compounds
 Results Reported on a Dry Weight Basis
 Results Reported as mg/kg (ppm)**

<u>Sample ID</u> Laboratory ID	<u>Diesel Extended</u> (C ₁₀ -C ₃₆)	<u>Surrogate</u> (% Recovery) (Limit 50-150)
No 3 E Bottom-10' 109250-01	<50	104
No 3 S Wall E End-6' 109250-02	13,000	115
No 3 W Wall-7' 109250-03	<50	97
No 3 N Wall W End at Footing 109250-04	7,800	104
No 3 S Wall W End 109250-05	880	110
No 3 Stockpile 1 109250-06	<50	102
No 3 Stockpile 2 109250-07	190	101
No 3 Stockpile 3 109250-08	84	111
No 3 W Bottom-11' 109250-09	<50	98
Method Blank 01-1723 MB	<50	113

FRIEDMAN & BRUYA, INC.

ENVIRONMENTAL CHEMISTS

Date of Report: 09/21/11

Date Received: 09/19/11

Project: 10816 18th Avenue E, F&BI 109250

**QUALITY ASSURANCE RESULTS FROM THE ANALYSIS OF SOIL SAMPLES
FOR TOTAL PETROLEUM HYDROCARBONS AS
DIESEL EXTENDED USING METHOD NWTPH-Dx**

Laboratory Code: 109250-03 (Matrix Spike)

Analyte	Reporting Units	Spike Level	(Wet wt) Sample Result	Percent Recovery MS	Percent Recovery MSD	Acceptance Criteria	RPD (Limit 20)
Diesel Extended	mg/kg (ppm)	5,000	<50	104	100	63-146	4

Laboratory Code: Laboratory Control Sample

Analyte	Reporting Units	Spike Level	Percent Recovery LCS	Acceptance Criteria
Diesel Extended	mg/kg (ppm)	5,000	100	79-144

Data Qualifiers & Definitions

- a - The analyte was detected at a level less than five times the reporting limit. The RPD results may not provide reliable information on the variability of the analysis.
- A1 - More than one compound of similar molecule structure was identified with equal probability.
- b - The analyte was spiked at a level that was less than five times that present in the sample. Matrix spike recoveries may not be meaningful.
- ca - The calibration results for this range fell outside of acceptance criteria. The value reported is an estimate.
- c - The presence of the analyte indicated may be due to carryover from previous sample injections.
- d - The sample was diluted. Detection limits may be raised due to dilution.
- ds - The sample was diluted. Detection limits are raised due to dilution and surrogate recoveries may not be meaningful.
- dv - Insufficient sample was available to achieve normal reporting limits and limits are raised accordingly.
- fb - Analyte present in the blank and the sample.
- fc - The compound is a common laboratory and field contaminant.
- hr - The sample and duplicate were reextracted and reanalyzed. RPD results were still outside of control limits. The variability is attributed to sample inhomogeneity.
- ht - Analysis performed outside the method or client-specified holding time requirement.
- ip - Recovery fell outside of normal control limits. Compounds in the sample matrix interfered with the quantitation of the analyte.
- j - The result is below normal reporting limits. The value reported is an estimate.
- J - The internal standard associated with the analyte is out of control limits. The reported concentration is an estimate.
- jl - The analyte result in the laboratory control sample is out of control limits. The reported concentration should be considered an estimate.
- jr - The rpd result in laboratory control sample associated with the analyte is out of control limits. The reported concentration should be considered an estimate.
- js - The surrogate associated with the analyte is out of control limits. The reported concentration should be considered an estimate.
- lc - The presence of the compound indicated is likely due to laboratory contamination.
- L - The reported concentration was generated from a library search.
- nm - The analyte was not detected in one or more of the duplicate analyses. Therefore, calculation of the RPD is not applicable.
- pc - The sample was received in a container not approved by the method. The value reported should be considered an estimate.
- pr - The sample was received with incorrect preservation. The value reported should be considered an estimate.
- ve - Estimated concentration calculated for an analyte response above the valid instrument calibration range. A dilution is required to obtain an accurate quantification of the analyte.
- vo - The value reported fell outside the control limits established for this analyte.
- x - The sample chromatographic pattern does not resemble the fuel standard used for quantitation.

109250

SAMPLE CHAIN OF CUSTODY

ME 09-19-11

B03

Send Report To James C. Leonard
 Company Filco Company, Inc.
 Address: PO Box 31228
 City, State, ZIP Seattle, WA 98103
 Phone # (206) 547-8347 Fax # (206) 548-9352

SAMPLERS (signature) [Signature] PO #
 PROJECT NAME/NO. [Blank]
 10816 18th Avenue E
 REMARKS
 please fax flagged results ASAP

Page # 1 of 1
 TURNAROUND TIME
 Standard (2 Weeks)
 RUSH
 Rush charges authorized by:
 SAMPLE DISPOSAL
 Dispose after 30 days
 Return samples
 Will call with instructions

Sample ID	Lab ID	Date	Time	Sample Type	# of containers	ANALYSES REQUESTED					Notes	
						TPH-Diesel	TPH-Gasoline	BTEX by 8021B	VOCs by 8260	SVOCs by 8270		HFS
#3 E Bottom - 10'	01	9/16/11	10:55	Soil	1	<input checked="" type="checkbox"/>						
#3 S Wall E End - 6'	02	9/16/11	11:15	Soil	1	<input checked="" type="checkbox"/>						
#3 W Wall - 7'	03	9/16/11	12:05	Soil	1	<input checked="" type="checkbox"/>						ASAP
#3 N Wall W End at Footin	04	9/16/11	12:10	Soil	1	<input checked="" type="checkbox"/>						
#3 S Wall W End	05	9/16/11	12:10	Soil	1	<input checked="" type="checkbox"/>						ASAP
#3 Stockpile 1	06	9/16/11	13:20	Soil	1	<input checked="" type="checkbox"/>						
#3 Stockpile 2	07	9/16/11	13:20	Soil	1	<input checked="" type="checkbox"/>						
#3 Stockpile 3	08	9/16/11	13:20	Soil	1	<input checked="" type="checkbox"/>						
#3 W. Bottom - 11'	09	9/16/11	13:55	Soil	1	<input checked="" type="checkbox"/>						ASAP
												Samples received at <u>2</u> °C

Friedman & Bruya, Inc. 3012 16th Avenue West Seattle, WA 98119-2029 Ph. (206) 285-8282 Fax (206) 283-5044	SIGNATURE Relinquished by: <u>[Signature]</u> Received by: <u>[Signature]</u> Relinquished by: Received by: <u>[Signature]</u>	PRINT NAME James C. Leonard Dennis Phan Pham	COMPANY Filco Co., Inc. FILCON	DATE 9/18/11	TIME 0857
---	--	---	--------------------------------------	-----------------	--------------

FRIEDMAN & BRUYA, INC.

ENVIRONMENTAL CHEMISTS

James E. Bruya, Ph.D.
Charlene Morrow, M.S.
Yelena Aravkina, M.S.
Bradley T. Benson, B.S.
Kurt Johnson, B.S.

3012 16th Avenue West
Seattle, WA 98119-2029
TEL: (206) 285-8282
FAX: (206) 283-5044
e-mail: fbi@isomedia.com

September 21, 2011

James Leonard, Project Manager
Filco Company, Inc.
PO Box 31228
Seattle, WA 98103

Dear Mr. Leonard:

Included are the results from the testing of material submitted on September 19, 2011 from the 10816 18th Avenue E, F&BI 109253 project. There are 3 pages included in this report. Any samples that may remain are currently scheduled for disposal in 30 days. If you would like us to return your samples or arrange for long term storage at our offices, please contact us as soon as possible.

We appreciate this opportunity to be of service to you and hope you will call if you should have any questions.

Sincerely,

FRIEDMAN & BRUYA, INC.



Matthew Langston
Project Manager

Enclosures
FCI0921R.DOC

FRIEDMAN & BRUYA, INC.

ENVIRONMENTAL CHEMISTS

Date of Report: 09/21/11
Date Received: 09/19/11
Project: 10816 18th Avenue E, F&BI 109253
Date Extracted: 09/19/11
Date Analyzed: 09/19/11

**RESULTS FROM THE ANALYSIS OF SOIL SAMPLES
FOR TOTAL PETROLEUM HYDROCARBONS AS DIESEL
USING METHOD NWTPH-Dx
Extended to Include Motor Oil Range Compounds
Results Reported on a Dry Weight Basis
Results Reported as mg/kg (ppm)**

<u>Sample ID</u> Laboratory ID	<u>Diesel Extended</u> (C ₁₀ -C ₃₆)	<u>Surrogate</u> (% Recovery) (Limit 50-150)
No 1 North-7' 109253-01	780	100
No 1 South-7' 109253-02	2,300	99
No 1 East-N End-7' 109253-03	3,400	99
No 1 East-S End-7' 109253-04	1,300	104
No 1 West-7' 109253-05	4,300	103
Method Blank 01-1723 MB	<50	113

FRIEDMAN & BRUYA, INC.

ENVIRONMENTAL CHEMISTS

Date of Report: 09/21/11

Date Received: 09/19/11

Project: 10816 18th Avenue E, F&BI 109253

**QUALITY ASSURANCE RESULTS FROM THE ANALYSIS OF SOIL SAMPLES
FOR TOTAL PETROLEUM HYDROCARBONS AS
DIESEL EXTENDED USING METHOD NWTPH-Dx**

Laboratory Code: 109250-03 (Matrix Spike)

Analyte	Reporting Units	Spike Level	(Wet wt) Sample Result	Percent Recovery MS	Percent Recovery MSD	Acceptance Criteria	RPD (Limit 20)
Diesel Extended	mg/kg (ppm)	5,000	<50	104	100	63-146	4

Laboratory Code: Laboratory Control Sample

Analyte	Reporting Units	Spike Level	Percent Recovery LCS	Acceptance Criteria
Diesel Extended	mg/kg (ppm)	5,000	100	79-144

Data Qualifiers & Definitions

- a - The analyte was detected at a level less than five times the reporting limit. The RPD results may not provide reliable information on the variability of the analysis.
- A1 - More than one compound of similar molecule structure was identified with equal probability.
- b - The analyte was spiked at a level that was less than five times that present in the sample. Matrix spike recoveries may not be meaningful.
- ca - The calibration results for this range fell outside of acceptance criteria. The value reported is an estimate.
- c - The presence of the analyte indicated may be due to carryover from previous sample injections.
- d - The sample was diluted. Detection limits may be raised due to dilution.
- ds - The sample was diluted. Detection limits are raised due to dilution and surrogate recoveries may not be meaningful.
- dv - Insufficient sample was available to achieve normal reporting limits and limits are raised accordingly.
- fb - Analyte present in the blank and the sample.
- fc - The compound is a common laboratory and field contaminant.
- hr - The sample and duplicate were reextracted and reanalyzed. RPD results were still outside of control limits. The variability is attributed to sample inhomogeneity.
- ht - Analysis performed outside the method or client-specified holding time requirement.
- ip - Recovery fell outside of normal control limits. Compounds in the sample matrix interfered with the quantitation of the analyte.
- j - The result is below normal reporting limits. The value reported is an estimate.
- J - The internal standard associated with the analyte is out of control limits. The reported concentration is an estimate.
- jl - The analyte result in the laboratory control sample is out of control limits. The reported concentration should be considered an estimate.
- jr - The rpd result in laboratory control sample associated with the analyte is out of control limits. The reported concentration should be considered an estimate.
- js - The surrogate associated with the analyte is out of control limits. The reported concentration should be considered an estimate.
- lc - The presence of the compound indicated is likely due to laboratory contamination.
- L - The reported concentration was generated from a library search.
- nm - The analyte was not detected in one or more of the duplicate analyses. Therefore, calculation of the RPD is not applicable.
- pc - The sample was received in a container not approved by the method. The value reported should be considered an estimate.
- pr - The sample was received with incorrect preservation. The value reported should be considered an estimate.
- ve - Estimated concentration calculated for an analyte response above the valid instrument calibration range. A dilution is required to obtain an accurate quantification of the analyte.
- vo - The value reported fell outside the control limits established for this analyte.
- x - The sample chromatographic pattern does not resemble the fuel standard used for quantitation.

109253

SAMPLE CHAIN OF CUSTODY

ME 09/19/11

B01

SAMPLERS (signature) *[Signature]* Page # 1 of 1

PROJECT NAME/NO. PO #

10816 18th Avenue E

REMARKS
please fax results **ASAP**

Send Report To James C. Leonard

Company Filco Company, Inc.

Address PO Box 31228

City, State, ZIP Seattle, WA 98103

Phone # (206) 547-8347 Fax # (206) 548-9352

TURNAROUND TIME
Standard (2 Weeks)
RUSH
Rush charges authorized by:

SAMPLE DISPOSAL
Dispose after 30 days
Return samples
Will call with instructions

Sample ID	Lab ID	Date	Time	Sample Type	# of containers	ANALYSES REQUESTED					Notes
						TPH-Diesel	TPH-Gasoline	BTEX by 8021B	VOCs by 8260	SVOCs by 8270	
#1 North - 7"	01	9/18/11	11:45	Soil	1	<input checked="" type="checkbox"/>	<input type="checkbox"/>	<input type="checkbox"/>	<input type="checkbox"/>	<input type="checkbox"/>	
#1 South - 7"	02	9/18/11	11:45	Soil	1	<input checked="" type="checkbox"/>	<input type="checkbox"/>	<input type="checkbox"/>	<input type="checkbox"/>	<input type="checkbox"/>	
#1 East - Hand 7"	03	9/18/11	11:45	Soil	1	<input checked="" type="checkbox"/>	<input type="checkbox"/>	<input type="checkbox"/>	<input type="checkbox"/>	<input type="checkbox"/>	
#1 East - S End 7"	04	9/18/11	11:45	Soil	1	<input checked="" type="checkbox"/>	<input type="checkbox"/>	<input type="checkbox"/>	<input type="checkbox"/>	<input type="checkbox"/>	
#1 West - 7"	05	9/19/11	11:45	Soil	1	<input checked="" type="checkbox"/>	<input type="checkbox"/>	<input type="checkbox"/>	<input type="checkbox"/>	<input type="checkbox"/>	
						<input type="checkbox"/>	<input type="checkbox"/>	<input type="checkbox"/>	<input type="checkbox"/>	<input type="checkbox"/>	
						<input type="checkbox"/>	<input type="checkbox"/>	<input type="checkbox"/>	<input type="checkbox"/>	<input type="checkbox"/>	
						<input type="checkbox"/>	<input type="checkbox"/>	<input type="checkbox"/>	<input type="checkbox"/>	<input type="checkbox"/>	
						<input type="checkbox"/>	<input type="checkbox"/>	<input type="checkbox"/>	<input type="checkbox"/>	<input type="checkbox"/>	
						<input type="checkbox"/>	<input type="checkbox"/>	<input type="checkbox"/>	<input type="checkbox"/>	<input type="checkbox"/>	
						<input type="checkbox"/>	<input type="checkbox"/>	<input type="checkbox"/>	<input type="checkbox"/>	<input type="checkbox"/>	
						<input type="checkbox"/>	<input type="checkbox"/>	<input type="checkbox"/>	<input type="checkbox"/>	<input type="checkbox"/>	
						<input type="checkbox"/>	<input type="checkbox"/>	<input type="checkbox"/>	<input type="checkbox"/>	<input type="checkbox"/>	
						<input type="checkbox"/>	<input type="checkbox"/>	<input type="checkbox"/>	<input type="checkbox"/>	<input type="checkbox"/>	
						<input type="checkbox"/>	<input type="checkbox"/>	<input type="checkbox"/>	<input type="checkbox"/>	<input type="checkbox"/>	
						<input type="checkbox"/>	<input type="checkbox"/>	<input type="checkbox"/>	<input type="checkbox"/>	<input type="checkbox"/>	
						<input type="checkbox"/>	<input type="checkbox"/>	<input type="checkbox"/>	<input type="checkbox"/>	<input type="checkbox"/>	
						<input type="checkbox"/>	<input type="checkbox"/>	<input type="checkbox"/>	<input type="checkbox"/>	<input type="checkbox"/>	
						<input type="checkbox"/>	<input type="checkbox"/>	<input type="checkbox"/>	<input type="checkbox"/>	<input type="checkbox"/>	
						<input type="checkbox"/>	<input type="checkbox"/>	<input type="checkbox"/>	<input type="checkbox"/>	<input type="checkbox"/>	
						<input type="checkbox"/>	<input type="checkbox"/>	<input type="checkbox"/>	<input type="checkbox"/>	<input type="checkbox"/>	
						<input type="checkbox"/>	<input type="checkbox"/>	<input type="checkbox"/>	<input type="checkbox"/>	<input type="checkbox"/>	
						<input type="checkbox"/>	<input type="checkbox"/>	<input type="checkbox"/>	<input type="checkbox"/>	<input type="checkbox"/>	
						<input type="checkbox"/>	<input type="checkbox"/>	<input type="checkbox"/>	<input type="checkbox"/>	<input type="checkbox"/>	
						<input type="checkbox"/>	<input type="checkbox"/>	<input type="checkbox"/>	<input type="checkbox"/>	<input type="checkbox"/>	
						<input type="checkbox"/>	<input type="checkbox"/>	<input type="checkbox"/>	<input type="checkbox"/>	<input type="checkbox"/>	
						<input type="checkbox"/>	<input type="checkbox"/>	<input type="checkbox"/>	<input type="checkbox"/>	<input type="checkbox"/>	
						<input type="checkbox"/>	<input type="checkbox"/>	<input type="checkbox"/>	<input type="checkbox"/>	<input type="checkbox"/>	
						<input type="checkbox"/>	<input type="checkbox"/>	<input type="checkbox"/>	<input type="checkbox"/>	<input type="checkbox"/>	
						<input type="checkbox"/>	<input type="checkbox"/>	<input type="checkbox"/>	<input type="checkbox"/>	<input type="checkbox"/>	
						<input type="checkbox"/>	<input type="checkbox"/>	<input type="checkbox"/>	<input type="checkbox"/>	<input type="checkbox"/>	
						<input type="checkbox"/>	<input type="checkbox"/>	<input type="checkbox"/>	<input type="checkbox"/>	<input type="checkbox"/>	
						<input type="checkbox"/>	<input type="checkbox"/>	<input type="checkbox"/>	<input type="checkbox"/>	<input type="checkbox"/>	
						<input type="checkbox"/>	<input type="checkbox"/>	<input type="checkbox"/>	<input type="checkbox"/>	<input type="checkbox"/>	
						<input type="checkbox"/>	<input type="checkbox"/>	<input type="checkbox"/>	<input type="checkbox"/>	<input type="checkbox"/>	
						<input type="checkbox"/>	<input type="checkbox"/>	<input type="checkbox"/>	<input type="checkbox"/>	<input type="checkbox"/>	
						<input type="checkbox"/>	<input type="checkbox"/>	<input type="checkbox"/>	<input type="checkbox"/>	<input type="checkbox"/>	
						<input type="checkbox"/>	<input type="checkbox"/>	<input type="checkbox"/>	<input type="checkbox"/>	<input type="checkbox"/>	
						<input type="checkbox"/>	<input type="checkbox"/>	<input type="checkbox"/>	<input type="checkbox"/>	<input type="checkbox"/>	
						<input type="checkbox"/>	<input type="checkbox"/>	<input type="checkbox"/>	<input type="checkbox"/>	<input type="checkbox"/>	
						<input type="checkbox"/>	<input type="checkbox"/>	<input type="checkbox"/>	<input type="checkbox"/>	<input type="checkbox"/>	
						<input type="checkbox"/>	<input type="checkbox"/>	<input type="checkbox"/>	<input type="checkbox"/>	<input type="checkbox"/>	
						<input type="checkbox"/>	<input type="checkbox"/>	<input type="checkbox"/>	<input type="checkbox"/>	<input type="checkbox"/>	
						<input type="checkbox"/>	<input type="checkbox"/>	<input type="checkbox"/>	<input type="checkbox"/>	<input type="checkbox"/>	
						<input type="checkbox"/>	<input type="checkbox"/>	<input type="checkbox"/>	<input type="checkbox"/>	<input type="checkbox"/>	
						<input type="checkbox"/>	<input type="checkbox"/>	<input type="checkbox"/>	<input type="checkbox"/>	<input type="checkbox"/>	
						<input type="checkbox"/>	<input type="checkbox"/>	<input type="checkbox"/>	<input type="checkbox"/>	<input type="checkbox"/>	
						<input type="checkbox"/>	<input type="checkbox"/>	<input type="checkbox"/>	<input type="checkbox"/>	<input type="checkbox"/>	
						<input type="checkbox"/>	<input type="checkbox"/>	<input type="checkbox"/>	<input type="checkbox"/>	<input type="checkbox"/>	
						<input type="checkbox"/>	<input type="checkbox"/>	<input type="checkbox"/>	<input type="checkbox"/>	<input type="checkbox"/>	
						<input type="checkbox"/>	<input type="checkbox"/>	<input type="checkbox"/>	<input type="checkbox"/>	<input type="checkbox"/>	
						<input type="checkbox"/>	<input type="checkbox"/>	<input type="checkbox"/>	<input type="checkbox"/>	<input type="checkbox"/>	
						<input type="checkbox"/>	<input type="checkbox"/>	<input type="checkbox"/>	<input type="checkbox"/>	<input type="checkbox"/>	
						<input type="checkbox"/>	<input type="checkbox"/>	<input type="checkbox"/>	<input type="checkbox"/>	<input type="checkbox"/>	
						<input type="checkbox"/>	<input type="checkbox"/>	<input type="checkbox"/>	<input type="checkbox"/>	<input type="checkbox"/>	
						<input type="checkbox"/>	<input type="checkbox"/>	<input type="checkbox"/>	<input type="checkbox"/>	<input type="checkbox"/>	
						<input type="checkbox"/>	<input type="checkbox"/>	<input type="checkbox"/>	<input type="checkbox"/>	<input type="checkbox"/>	
						<input type="checkbox"/>	<input type="checkbox"/>	<input type="checkbox"/>	<input type="checkbox"/>	<input type="checkbox"/>	
						<input type="checkbox"/>	<input type="checkbox"/>	<input type="checkbox"/>	<input type="checkbox"/>	<input type="checkbox"/>	
						<input type="checkbox"/>	<input type="checkbox"/>	<input type="checkbox"/>	<input type="checkbox"/>	<input type="checkbox"/>	
						<input type="checkbox"/>	<input type="checkbox"/>	<input type="checkbox"/>	<input type="checkbox"/>	<input type="checkbox"/>	
						<input type="checkbox"/>	<input type="checkbox"/>	<input type="checkbox"/>	<input type="checkbox"/>	<input type="checkbox"/>	
						<input type="checkbox"/>	<input type="checkbox"/>	<input type="checkbox"/>	<input type="checkbox"/>	<input type="checkbox"/>	
						<input type="checkbox"/>	<input type="checkbox"/>	<input type="checkbox"/>	<input type="checkbox"/>	<input type="checkbox"/>	
						<input type="checkbox"/>	<input type="checkbox"/>	<input type="checkbox"/>	<input type="checkbox"/>	<input type="checkbox"/>	
						<input type="checkbox"/>	<input type="checkbox"/>	<input type="checkbox"/>	<input type="checkbox"/>	<input type="checkbox"/>	
						<input type="checkbox"/>	<input type="checkbox"/>	<input type="checkbox"/>	<input type="checkbox"/>	<input type="checkbox"/>	
						<input type="checkbox"/>	<input type="checkbox"/>	<input type="checkbox"/>	<input type="checkbox"/>	<input type="checkbox"/>	
						<input type="checkbox"/>	<input type="checkbox"/>	<input type="checkbox"/>	<input type="checkbox"/>	<input type="checkbox"/>	
						<input type="checkbox"/>	<input type="checkbox"/>	<input type="checkbox"/>	<input type="checkbox"/>	<input type="checkbox"/>	
						<input type="checkbox"/>	<input type="checkbox"/>	<input type="checkbox"/>	<input type="checkbox"/>	<input type="checkbox"/>	
						<input type="checkbox"/>	<input type="checkbox"/>	<input type="checkbox"/>	<input type="checkbox"/>	<input type="checkbox"/>	
						<input type="checkbox"/>	<input type="checkbox"/>	<input type="checkbox"/>	<input type="checkbox"/>	<input type="checkbox"/>	
						<input type="checkbox"/>	<input type="checkbox"/>	<input type="checkbox"/>	<input type="checkbox"/>	<input type="checkbox"/>	
						<input type="checkbox"/>	<input type="checkbox"/>	<input type="checkbox"/>	<input type="checkbox"/>	<input type="checkbox"/>	
						<input type="checkbox"/>	<input type="checkbox"/>	<input type="checkbox"/>	<input type="checkbox"/>	<input type="checkbox"/>	
						<input type="checkbox"/>	<input type="checkbox"/>	<input type="checkbox"/>	<input type="checkbox"/>	<input type="checkbox"/>	
						<input type="checkbox"/>	<input type="checkbox"/>	<input type="checkbox"/>	<input type="checkbox"/>	<input type="checkbox"/>	
						<input type="checkbox"/>	<input type="checkbox"/>	<input type="checkbox"/>	<input type="checkbox"/>	<input type="checkbox"/>	
						<input type="checkbox"/>	<input type="checkbox"/>	<input type="checkbox"/>	<input type="checkbox"/>	<input type="checkbox"/>	
						<input type="checkbox"/>	<input type="checkbox"/>	<input type="checkbox"/>	<input type="checkbox"/>	<input type="checkbox"/>	
						<input type="checkbox"/>	<input type="checkbox"/>	<input type="checkbox"/>	<input type="checkbox"/>	<input type="checkbox"/>	
						<input type="checkbox"/>	<input type="checkbox"/>	<input type="checkbox"/>	<input type="checkbox"/>	<input type="checkbox"/>	
						<input type="checkbox"/>	<input type="checkbox"/>	<input type="checkbox"/>	<input type="checkbox"/>	<input type="checkbox"/>	
						<input type="checkbox"/>	<input type="checkbox"/>	<input type="checkbox"/>	<input type="checkbox"/>	<input type="checkbox"/>	
						<input type="checkbox"/>	<input type="checkbox"/>	<input type="checkbox"/>	<input type="checkbox"/>	<input type="checkbox"/>	
						<input type="checkbox"/>	<input type="checkbox"/>	<input type="checkbox"/>	<input type="checkbox"/>	<input type="checkbox"/>	
						<input type="checkbox"/>	<input type="checkbox"/>	<input type="checkbox"/>	<input type="checkbox"/>	<input type="checkbox"/>	
						<input type="checkbox"/>	<input type="checkbox"/>	<input type="checkbox"/>	<input type="checkbox"/>	<input type="checkbox"/>	
						<input type="checkbox"/>	<input type="checkbox"/>	<input type="checkbox"/>	<input type="checkbox"/>	<input type="checkbox"/>	
						<input type="checkbox"/>	<input type="checkbox"/>	<input type="checkbox"/>	<input type="checkbox"/>	<input type="checkbox"/>	
						<input type="checkbox"/>	<input type="checkbox"/>	<input type="checkbox"/>	<input type="checkbox"/>	<input type="checkbox"/>	
						<input type="checkbox"/>	<input type="checkbox"/>	<input type="checkbox"/>	<input type="checkbox"/>	<input type="checkbox"/>	
						<input type="checkbox"/>	<input type="checkbox"/>	<input type="checkbox"/>	<input type="checkbox"/>	<input type="checkbox"/>	
						<input type="checkbox"/>	<input type="checkbox"/>	<input type="checkbox"/>	<input type="checkbox"/>	<input type="checkbox"/>	
						<input type="checkbox"/>	<input type="checkbox"/>	<input type="checkbox"/>	<input type="checkbox"/>	<input type="checkbox"/>	
						<input type="checkbox"/>	<input type="checkbox"/>	<input type="checkbox"/>	<input type="checkbox"/>	<input type="checkbox"/>	
						<input type="checkbox"/>	<input type="checkbox"/>	<input type="checkbox"/>	<input type="checkbox"/>	<input type="checkbox"/>	
						<input type="checkbox"/>	<input type="checkbox"/>	<input type="checkbox"/>	<input type="checkbox"/>	<input type="checkbox"/>	
						<input type="checkbox"/>	<input type="checkbox"/>	<input type="checkbox"/>	<input type="checkbox"/>	<input type="checkbox"/>	
						<input type="checkbox"/>	<input type="checkbox"/>	<input type="checkbox"/>	<input type="checkbox"/>	<input type="checkbox"/>	
						<input type="checkbox"/>	<input type="checkbox"/>	<input type="checkbox"/>	<input type="checkbox"/>	<input type="checkbox"/>	
						<input type="checkbox"/>	<input type="checkbox"/>	<input type="checkbox"/>	<input type="checkbox"/>	<input type="checkbox"/>	
						<input type="checkbox"/>	<input type="checkbox"/>	<input type="checkbox"/>	<input type="checkbox"/>	<input type="checkbox"/>	
						<input type="checkbox"/>	<input type="checkbox"/>	<input type="checkbox"/>	<input type="checkbox"/>	<input type="checkbox"/>	
						<input type="checkbox"/>	<input type="checkbox"/>	<input type="checkbox"/>	<input type="checkbox"/>	<input type="checkbox"/>	
						<input type="checkbox"/>	<input type="checkbox"/>	<input type="checkbox"/>	<input type="checkbox"/>	<input type="checkbox"/>	
						<input type="checkbox"/>	<input type="checkbox"/>	<input type="checkbox"/>	<input type="checkbox"/>	<input type="checkbox"/>	
						<input type="checkbox"/>	<input type="checkbox"/>	<input type="checkbox"/>	<input type="checkbox"/>	<input type="checkbox"/>	
						<input type="checkbox"/>	<input type="checkbox"/>	<input type="checkbox"/>	<input type="checkbox"/>	<input type="checkbox"/>	
						<input type="checkbox"/>	<input type="checkbox"/>	<input type="checkbox"/>	<input type="checkbox"/>	<input type="checkbox"/>	
						<input type="checkbox"/>	<input type="checkbox"/>	<input type="checkbox"/>	<input type="checkbox"/>	<input type="checkbox"/>	
						<input type="checkbox"/>	<input type="checkbox"/>	<input type="checkbox"/>	<input type="checkbox"/>	<input type="checkbox"/>	
						<input type="checkbox"/>	<input type="checkbox"/>	<input type="checkbox"/>	<input type="checkbox"/>	<input type="checkbox"/>	
						<input type="checkbox"/>	<input type="checkbox"/>	<input type="checkbox"/>	<input type="checkbox"/>	<input type="checkbox"/>	
						<input type="checkbox"/>	<input type="checkbox"/>	<input type="checkbox"/>	<input type="checkbox"/>	<input type="checkbox"/>	
						<input type="checkbox"/>	<input type="checkbox"/>	<input type="checkbox"/>	<input type="checkbox"/>	<input type="checkbox"/>	
						<input type="checkbox"/>	<input type="checkbox"/>	<input type="checkbox"/>	<input type="checkbox"/>	<input type="checkbox"/>	
						<input type="checkbox"/>	<input type="checkbox"/>	<input type="checkbox"/>	<input type="checkbox"/>	<input type="checkbox"/>	
						<input type="checkbox"/>	<input type="checkbox"/>	<input type="checkbox"/>	<input type="checkbox"/>	<input type="checkbox"/>	
						<input type="checkbox"/>	<input type="checkbox"/>	<input type="checkbox"/>	<input type="checkbox"/>	<input type="checkbox"/>	
						<input type="checkbox"/>	<input type="checkbox"/>	<input type="checkbox"/>	<input type="checkbox"/>	<input type="checkbox"/>	
						<input type="checkbox"/>	<input type="checkbox"/>	<input type="checkbox"/>	<input type="checkbox"/>	<input type="checkbox"/>	
						<input type="checkbox"/>	<input type="checkbox"/>	<input type="checkbox"/>	<input type="checkbox"/>	<input type="checkbox"/>	
						<input type="checkbox"/>	<input type="checkbox"/>	<input type="checkbox"/>	<input type="checkbox"/>	<input type="checkbox"/>	

FRIEDMAN & BRUYA, INC.

ENVIRONMENTAL CHEMISTS

James E. Bruya, Ph.D.
Charlene Morrow, M.S.
Yelena Aravkina, M.S.
Bradley T. Benson, B.S.
Kurt Johnson, B.S.

3012 16th Avenue West
Seattle, WA 98119-2029
TEL: (206) 285-8282
FAX: (206) 283-5044
e-mail: fbi@isomedia.com

September 23, 2011

Phil Suetens, Project Manager
Filco Company, Inc.
PO Box 31228
Seattle, WA 98103

Dear Mr. Suetens:

Included are the results from the testing of material submitted on September 21, 2011 from the Midland Manor, F&BI 109291 project. There are 3 pages included in this report. Any samples that may remain are currently scheduled for disposal in 30 days. If you would like us to return your samples or arrange for long term storage at our offices, please contact us as soon as possible.

We appreciate this opportunity to be of service to you and hope you will call if you should have any questions.

Sincerely,

FRIEDMAN & BRUYA, INC.



Matthew Langston
Project Manager

Enclosures
FCI0923R.DOC

FRIEDMAN & BRUYA, INC.

ENVIRONMENTAL CHEMISTS

Date of Report: 09/23/11
Date Received: 09/21/11
Project: Midland Manor, F&BI 109291
Date Extracted: 09/21/11
Date Analyzed: 09/21/11

**RESULTS FROM THE ANALYSIS OF SOIL SAMPLES
FOR TOTAL PETROLEUM HYDROCARBONS AS DIESEL
USING METHOD NWTPH-D_x
Extended to Include Motor Oil Range Compounds
Results Reported on a Dry Weight Basis
Results Reported as mg/kg (ppm)**

<u>Sample ID</u> Laboratory ID	<u>Diesel Extended</u> (C ₁₀ -C ₃₆)	<u>Surrogate</u> <u>(% Recovery)</u> (Limit 50-150)
Under H2O Pipe 109291-01	<50	113
Method Blank 01-1737 MB	<50	114

FRIEDMAN & BRUYA, INC.

ENVIRONMENTAL CHEMISTS

Date of Report: 09/23/11
Date Received: 09/21/11
Project: Midland Manor, F&BI 109291

QUALITY ASSURANCE RESULTS FROM THE ANALYSIS OF SOIL SAMPLES
FOR TOTAL PETROLEUM HYDROCARBONS AS
DIESEL EXTENDED USING METHOD NWTPH-Dx

Laboratory Code: 109291-01 (Matrix Spike)

Analyte	Reporting Units	Spike Level	(Wet wt) Sample Result	Percent Recovery MS	Percent Recovery MSD	Acceptance Criteria	RPD (Limit 20)
Diesel Extended	mg/kg (ppm)	5,000	<50	114	113	63-146	1

Laboratory Code: Laboratory Control Sample

Analyte	Reporting Units	Spike Level	Percent Recovery LCS	Acceptance Criteria
Diesel Extended	mg/kg (ppm)	5,000	101	79-144

Data Qualifiers & Definitions

a - The analyte was detected at a level less than five times the reporting limit. The RPD results may not provide reliable information on the variability of the analysis.

A1 - More than one compound of similar molecule structure was identified with equal probability.

b - The analyte was spiked at a level that was less than five times that present in the sample. Matrix spike recoveries may not be meaningful.

ca - The calibration results for this range fell outside of acceptance criteria. The value reported is an estimate.

c - The presence of the analyte indicated may be due to carryover from previous sample injections.

d - The sample was diluted. Detection limits may be raised due to dilution.

ds - The sample was diluted. Detection limits are raised due to dilution and surrogate recoveries may not be meaningful.

dv - Insufficient sample was available to achieve normal reporting limits and limits are raised accordingly.

fb - Analyte present in the blank and the sample.

fc - The compound is a common laboratory and field contaminant.

hr - The sample and duplicate were reextracted and reanalyzed. RPD results were still outside of control limits. The variability is attributed to sample inhomogeneity.

ht - Analysis performed outside the method or client-specified holding time requirement.

ip - Recovery fell outside of normal control limits. Compounds in the sample matrix interfered with the quantitation of the analyte.

j - The result is below normal reporting limits. The value reported is an estimate.

J - The internal standard associated with the analyte is out of control limits. The reported concentration is an estimate.

jl - The analyte result in the laboratory control sample is out of control limits. The reported concentration should be considered an estimate.

jr - The rpd result in laboratory control sample associated with the analyte is out of control limits. The reported concentration should be considered an estimate.

js - The surrogate associated with the analyte is out of control limits. The reported concentration should be considered an estimate.

lc - The presence of the compound indicated is likely due to laboratory contamination.

L - The reported concentration was generated from a library search.

nm - The analyte was not detected in one or more of the duplicate analyses. Therefore, calculation of the RPD is not applicable.

pc - The sample was received in a container not approved by the method. The value reported should be considered an estimate.

pr - The sample was received with incorrect preservation. The value reported should be considered an estimate.

ve - Estimated concentration calculated for an analyte response above the valid instrument calibration range. A dilution is required to obtain an accurate quantification of the analyte.

vo - The value reported fell outside the control limits established for this analyte.

x - The sample chromatographic pattern does not resemble the fuel standard used for quantitation.

FRIEDMAN & BRUYA, INC.

ENVIRONMENTAL CHEMISTS

James E. Bruya, Ph.D.
Charlene Morrow, M.S.
Yelena Aravkina, M.S.
Bradley T. Benson, B.S.
Kurt Johnson, B.S.

3012 16th Avenue West
Seattle, WA 98119-2029
TEL: (206) 285-8282
FAX: (206) 283-5044
e-mail: fbi@isomedia.com

October 10, 2011

James Leonard, Project Manager
Filco Company, Inc.
PO Box 31228
Seattle, WA 98103

Dear Mr. Leonard:

Included are the results from the testing of material submitted on September 19, 2011 from the 10816 18th Avenue E, F&BI 109253 project. Sample No.1 East-N End 7' was sent to Fremont for EPH analysis. The report is enclosed.

We appreciate this opportunity to be of service to you and hope you will call if you should have any questions.

Sincerely,

FRIEDMAN & BRUYA, INC.



Matthew Langston
Project Manager

Enclosures
FCI1010R.DOC

A2. 1B Worksheet for Calculating Soil Cleanup Levels for Protection of Human Health: (Soil Direct Contact Pathway)
Method B: Unrestricted Land Use (WAC 173-340-740)

Date: 9/19/2011

Site Name: 10816 18th Avenue E

Sample Name: #1 East N End 7' 3,400 ppm

Chemical of Concern or EC group	Current Condition			Adjusted Condition				
	Measured Soil Conc @dry basis mg/kg	HQ unitless	RISK unitless	Pass or Fail?	Soil Conc being tested mg/kg	HQ unitless	RISK unitless	Pass or Fail?
Petroleum EC Fraction								
AL_EC >5-6	0				0.00E+00			
AL_EC >6-8	0				0.00E+00			
AL_EC >8-10	0				0.00E+00			
AL_EC >10-12	34	1.53E-02			3.58E+00	1.62E-03		
AL_EC >12-16	200	1.20E-01			2.11E+01	1.26E-02		
AL_EC >16-21	1030	9.27E-03			1.08E+02	9.76E-04		
AL_EC >21-34	1280	1.15E-02			1.35E+02	1.21E-03		
AR_EC >8-10	0				0.00E+00			
AR_EC >10-12	0				0.00E+00			
AR_EC >12-16	43.7	1.57E-02			4.60E+00	1.66E-03		
AR_EC >16-21	285	1.71E-01			3.00E+01	1.80E-02		
AR_EC >21-34	46.2	2.08E-02			4.87E+00	2.19E-03		
Benzene	0		0.00E+00		0.00E+00		0.00E+00	
Toluene	0				0.00E+00			
Ethylbenzene	0				0.00E+00			
Total Xylenes	0				0.00E+00			
Naphthalene	0				0.00E+00	0.00E+00		
1-Methyl Naphthalene	0				0.00E+00	0.00E+00		
2-Methyl Naphthalene	0				0.00E+00	0.00E+00		
n-Hexane	0				0.00E+00	0.00E+00		
MTBE	0				0.00E+00	0.00E+00		
Ethylene Dibromide (EDB)	0		0.00E+00		0.00E+00	0.00E+00	0.00E+00	
1,2 Dichloroethane (EDC)	0		0.00E+00		0.00E+00	0.00E+00	0.00E+00	
Benzo(a)anthracene	0		0.00E+00	For all cPAHs	0.00E+00		0.00E+00	
Benzo(b)fluoranthene	0		0.00E+00		0.00E+00		0.00E+00	
Benzo(k)fluoranthene	0		0.00E+00		0.00E+00		0.00E+00	
Benzo(a)pyrene	0		0.00E+00		0.00E+00		0.00E+00	
Chrysene	0		0.00E+00		0.00E+00		0.00E+00	
Di'benz(a,h)anthracene	0		0.00E+00	Σ Risk=	0.00E+00		0.00E+00	
Indeno(1,2,3-cd)pyrene	0		0.00E+00	0.00E+00	0.00E+00		0.00E+00	
Sum	2918.9	3.64E-01	0.00E+00		3.07E+02	3.83E-020.00E+00	0.00E+00	

TEST CURRENT CONDITION
 Measured TPH Soil Conc, mg/kg=2918.900
 HI= 3.636E-01
 RISK= 0.000E+00
 Pass or Fail? Pass
 Check Residual Saturation (WAC340-747(10))

CALCULATE PROTECTIVE CONDITION
 This tool allows the user to calculate protective TPH soil concentration based on various soil quality criteria. The Workbook uses the same composition ratio as for the measured data.
 Calculate Protective TPH Soil Conc
 Selected Criterion:
 Most Stringent?
 Protective TPH Soil Conc, mg/kg =
 HI =
 RISK =

TEST ADJUSTED CONDITION
 This tool allows the user to test whether a particular TPH soil concentration is protective of human health. The Workbook uses the same composition ratio as for the measured data.
 Test Adjusted TPH Soil
 Tested TPH Soil Conc, mg/kg =
 HI =
 RISK =
 Pass or Fail?



Fremont
Analytical

1311 N. 35th St.
Seattle, WA 98103
T: (206) 352-3790
F: (206) 352-7178
info@fremontanalytical.com

Friedman & Bruya
Michael Erdahl
3012 16th Ave. W.
Seattle, Washington 98119

RE: 109253
Lab ID: 1110020

October 07, 2011

Attention Michael Erdahl:

Fremont Analytical, Inc. received 1 sample(s) on 10/6/2011 for the analyses presented in the following report.

Extractable Petroleum Hydrocarbons by NWEPH

This report consists of the following:

- Case Narrative
- Analytical Results
- Applicable Quality Control Summary Reports
- Chain of Custody

All analyses were performed consistent with the Quality Assurance program of Fremont Analytical, Inc. Please contact the laboratory if you should have any questions about the results.

Thank you for using Fremont Analytical.

Sincerely,

Michael Dee
Sr. Chemist / Principal



Fremont
Analytical

Date: 10/07/2011

CLIENT: Friedman & Bruya
Project: 109253
Lab Order: 1110020

Work Order Sample Summary

Lab Sample ID	Client Sample ID	Date/Time Collected	Date/Time Received
1110020-001	No. 1 East-N End 7'	09/19/2011 11:45 AM	10/06/2011 9:45 AM

Note: If no "Time Collected" is supplied, a default of 12:00AM is assigned



CLIENT: Friedman & Bruya
Project: 109253

I. SAMPLE RECEIPT:

All samples were received intact. The internal ice chest temperatures were measured on receipt and are recorded on the attached Sample Receipt Checklist.

II. GENERAL REPORTING COMMENTS:

Results are reported on a wet weight basis unless dry-weight correction is denoted in the units field on the analytical report ("mg/kg-dry" or "ug/kg-dry").

The validity of the analytical procedures for which data is reported in this analytical report is determined by the Laboratory Control Sample (LCS) and the Method Blank (MB). The LCS and the MB are processed with the samples to ensure method criteria are achieved throughout the entire analytical process.

III. ANALYSES AND EXCEPTIONS:

Exceptions associated with this report will be footnoted in the analytical results page(s) or the quality control summary page(s) and/or noted below.

Prep Comments for PREP-EPH-S, Sample 1110020-001A: Prep hold time was exceeded by 4 day(s)



Client: Friedman & Bruya

Collection Date: 9/19/2011 11:45:00 AM

Project: 109253

Lab ID: 1110020-001

Matrix: Soil

Client Sample ID: No. 1 East-N End 7'

Analyses	Result	RL	Qual	Units	DF	Date Analyzed
----------	--------	----	------	-------	----	---------------

Extractable Petroleum Hydrocarbons by NWEPH

Batch ID: 1227

Analyst: SG

Aliphatic Hydrocarbon (C8-C10)	34.0	5.91	H	mg/Kg-dry	1	10/6/2011 3:43:00 PM
Aliphatic Hydrocarbon (C10-C12)	200	5.91	H	mg/Kg-dry	1	10/6/2011 3:43:00 PM
Aliphatic Hydrocarbon (C12-C16)	1,030	5.91	H	mg/Kg-dry	1	10/6/2011 3:43:00 PM
Aliphatic Hydrocarbon (C16-C21)	1,280	5.91	H	mg/Kg-dry	1	10/6/2011 3:43:00 PM
Aliphatic Hydrocarbon (C21-C34)	227	5.91	H	mg/Kg-dry	1	10/6/2011 3:43:00 PM
Aromatic Hydrocarbon (C8-C10)	ND	5.91	H	mg/Kg-dry	1	10/6/2011 3:43:00 PM
Aromatic Hydrocarbon (C10-C12)	ND	5.91	H	mg/Kg-dry	1	10/6/2011 3:43:00 PM
Aromatic Hydrocarbon (C12-C16)	43.7	5.91	H	mg/Kg-dry	1	10/6/2011 3:43:00 PM
Aromatic Hydrocarbon (C16-C21)	285	5.91	H	mg/Kg-dry	1	10/6/2011 3:43:00 PM
Aromatic Hydrocarbon (C21-C34)	46.2	5.91	H	mg/Kg-dry	1	10/6/2011 3:43:00 PM
Surr: 1-Chlorooctadecane	107	65-140	H	%REC	1	10/6/2011 3:43:00 PM
Surr: o-Terphenyl	115	65-140	H	%REC	1	10/6/2011 3:43:00 PM

Qualifiers:

- B Analyte detected in the associated Method Blank
- E Value above quantitation range
- J Analyte detected below quantitation limits
- RL Reporting Limit

- D Dilution was required
- H Holding times for preparation or analysis exceeded
- ND Not detected at the Reporting Limit
- S Spike recovery outside accepted recovery limits



Date: 10/7/2011

Work Order: 1110020
 CLIENT: Friedman & Bruya
 Project: 109253

QC SUMMARY REPORT
Extractable Petroleum Hydrocarbons by NWEPH

Sample ID: CCV-1227	SampType: CCV	Units: mg/Kg	Prep Date: 10/6/2011	RunNo: 2040
Client ID: CCV	Batch ID: 1227		Analysis Date: 10/6/2011	SeqNo: 36126

Analyte	Result	RL	SPK value	SPK Ref Val	%REC	LowLimit	HighLimit	RPD Ref Val	%RPD	RPDLimit	Qual
Aliphatic Hydrocarbon (C8-C10)	41.6	5.00	40.00	0	104	80	120				
Aliphatic Hydrocarbon (C10-C12)	22.1	5.00	20.00	0	111	80	120				
Aliphatic Hydrocarbon (C12-C16)	21.3	5.00	20.00	0	107	80	120				
Aliphatic Hydrocarbon (C16-C21)	19.3	5.00	20.00	0	96.7	80	120				
Aliphatic Hydrocarbon (C21-C34)	20.0	5.00	20.00	0	99.8	80	120				
Aromatic Hydrocarbon (C8-C10)	39.9	5.00	40.00	0	99.9	80	120				
Aromatic Hydrocarbon (C10-C12)	22.5	5.00	20.00	0	113	80	120				
Aromatic Hydrocarbon (C12-C16)	21.4	5.00	20.00	0	107	80	120				
Aromatic Hydrocarbon (C16-C21)	21.5	5.00	20.00	0	108	80	120				
Aromatic Hydrocarbon (C21-C34)	20.3	5.00	20.00	0	102	80	120				
Surr. 1-Chlorooctadecane	42.7		40.00		107	80	120				
Surr. o-Terphenyl	39.5		40.00		96.7	80	120				

Sample ID: LCS-1227	SampType: LCS	Units: mg/Kg	Prep Date: 10/6/2011	RunNo: 2040
Client ID: LCSS	Batch ID: 1227		Analysis Date: 10/6/2011	SeqNo: 36127

Analyte	Result	RL	SPK value	SPK Ref Val	%REC	LowLimit	HighLimit	RPD Ref Val	%RPD	RPDLimit	Qual
Aliphatic Hydrocarbon (C8-C10)	44.0	5.00	40.00	0	110	65	140				
Aliphatic Hydrocarbon (C10-C12)	24.1	5.00	20.00	0	120	65	140				
Aliphatic Hydrocarbon (C12-C16)	19.3	5.00	20.00	0	96.4	65	140				
Aliphatic Hydrocarbon (C16-C21)	20.1	5.00	20.00	0	100	65	140				
Aliphatic Hydrocarbon (C21-C34)	25.4	5.00	20.00	0	127	65	140				
Aromatic Hydrocarbon (C8-C10)	34.5	5.00	40.00	0	86.4	65	140				
Aromatic Hydrocarbon (C10-C12)	19.0	5.00	20.00	0	94.8	65	140				
Aromatic Hydrocarbon (C12-C16)	18.4	5.00	20.00	0	92.1	65	140				
Aromatic Hydrocarbon (C16-C21)	23.3	5.00	20.00	0	117	65	140				

Qualifiers: E Value above quantitation range
 ND Not detected at the Reporting Limit
 S Spike recovery outside accepted recovery limits
 H Holding times for preparation or analysis exceeded
 R RPD outside accepted recovery limits
 J Analyte detected below quantitation limits
 RL Reporting Limit



Date: 10/7/2011

Work Order: 1110020
 CLIENT: Friedman & Bruya
 Project: 109253

QC SUMMARY REPORT
Extractable Petroleum Hydrocarbons by NWEPH

Sample ID: LCS-1227 SampType: LCS Units: mg/Kg Prep Date: 10/6/2011 RunNo: 2040
 Client ID: LCSS Batch ID: 1227 Analysis Date: 10/6/2011 SeqNo: 36127

Analyte	Result	RL	SPK value	SPK Ref Val	%REC	LowLimit	HighLimit	RPD Ref Val	%RPD	RPDLimit	Qual
Aromatic Hydrocarbon (C21-C34)	22.5	5.00	20.00	0	113	65	140				
Surr: 1-Chlorooctadecane	35.5		40.00		88.9	65	140				
Surr: o-Terphenyl	40.3		40.00		101	65	140				

Sample ID: MB-1227 SampType: MBLK Units: mg/Kg Prep Date: 10/6/2011 RunNo: 2040
 Client ID: MBLKS Batch ID: 1227 Analysis Date: 10/6/2011 SeqNo: 36128

Analyte	Result	RL	SPK value	SPK Ref Val	%REC	LowLimit	HighLimit	RPD Ref Val	%RPD	RPDLimit	Qual
Aliphatic Hydrocarbon (C8-C10)	ND	5.00									
Aliphatic Hydrocarbon (C10-C12)	ND	5.00									
Aliphatic Hydrocarbon (C12-C16)	ND	5.00									
Aliphatic Hydrocarbon (C16-C21)	ND	5.00									
Aliphatic Hydrocarbon (C21-C34)	ND	5.00									
Aromatic Hydrocarbon (C8-C10)	ND	5.00									
Aromatic Hydrocarbon (C10-C12)	ND	5.00									
Aromatic Hydrocarbon (C12-C16)	ND	5.00									
Aromatic Hydrocarbon (C16-C21)	ND	5.00									
Aromatic Hydrocarbon (C21-C34)	ND	5.00									
Surr: 1-Chlorooctadecane	41.3		40.00		103	65	140				
Surr: o-Terphenyl	40.2		40.00		100	65	140				

Qualifiers: E Value above quantitation range H Holding times for preparation or analysis exceeded J Analyte detected below quantitation limits
 ND Not detected at the Reporting Limit R RPD outside accepted recovery limits RL Reporting Limit
 S Spike recovery outside accepted recovery limits



Analytical Report

WO#: 1110020

Date Reported: 10/7/2011

Client: Friedman & Bruya

Collection Date: 9/19/2011 11:45:00 AM

Project: 109253

Lab ID: 1110020-001

Matrix: Soil

Client Sample ID: No. 1 East-N End 7'

Analyses	Result	RL	Qual	Units	DF	Date Analyzed
----------	--------	----	------	-------	----	---------------

Extractable Petroleum Hydrocarbons by NWEPH

Batch ID: 1227

Analyst: SG

Aliphatic Hydrocarbon (C8-C10)	34.0	5.91	H	mg/Kg-dry	1	10/6/2011 3:43:00 PM
Aliphatic Hydrocarbon (C10-C12)	200	5.91	H	mg/Kg-dry	1	10/6/2011 3:43:00 PM
Aliphatic Hydrocarbon (C12-C16)	1,030	5.91	H	mg/Kg-dry	1	10/6/2011 3:43:00 PM
Aliphatic Hydrocarbon (C16-C21)	1,280	5.91	H	mg/Kg-dry	1	10/6/2011 3:43:00 PM
Aliphatic Hydrocarbon (C21-C34)	227	5.91	H	mg/Kg-dry	1	10/6/2011 3:43:00 PM
Aromatic Hydrocarbon (C8-C10)	ND	5.91	H	mg/Kg-dry	1	10/6/2011 3:43:00 PM
Aromatic Hydrocarbon (C10-C12)	ND	5.91	H	mg/Kg-dry	1	10/6/2011 3:43:00 PM
Aromatic Hydrocarbon (C12-C16)	43.7	5.91	H	mg/Kg-dry	1	10/6/2011 3:43:00 PM
Aromatic Hydrocarbon (C16-C21)	285	5.91	H	mg/Kg-dry	1	10/6/2011 3:43:00 PM
Aromatic Hydrocarbon (C21-C34)	46.2	5.91	H	mg/Kg-dry	1	10/6/2011 3:43:00 PM
Surr: 1-Chlorooctadecane	107	65-140	H	%REC	1	10/6/2011 3:43:00 PM
Surr: o-Terphenyl	115	65-140	H	%REC	1	10/6/2011 3:43:00 PM

Qualifiers: B Analyte detected in the associated Method Blank
 E Value above quantitation range
 J Analyte detected below quantitation limits
 RL Reporting Limit

D Dilution was required
 H Holding times for preparation or analysis exceeded
 ND Not detected at the Reporting Limit
 S Spike recovery outside accepted recovery limits



Date: 10/7/2011

QC SUMMARY REPORT
Extractable Petroleum Hydrocarbons by NWEPH

Work Order: 1110020
 CLIENT: Friedman & Bruya
 Project: 109253

Sample ID: CCV-1227	SampType: CCV	Units: mg/Kg	Prep Date: 10/6/2011	RunNo: 2040							
Client ID: CCV	Batch ID: 1227		Analysis Date: 10/6/2011	SeqNo: 36126							
Analyte	Result	RL	SPK value	SPK Ref Val	%REC	LowLimit	HighLimit	RPD Ref Val	%RPD	RPDLimit	Qual
Aliphatic Hydrocarbon (C8-C10)	41.6	5.00	40.00	0	104	80	120				
Aliphatic Hydrocarbon (C10-C12)	22.1	5.00	20.00	0	111	80	120				
Aliphatic Hydrocarbon (C12-C16)	21.3	5.00	20.00	0	107	80	120				
Aliphatic Hydrocarbon (C16-C21)	19.3	5.00	20.00	0	96.7	80	120				
Aliphatic Hydrocarbon (C21-C34)	20.0	5.00	20.00	0	99.8	80	120				
Aromatic Hydrocarbon (C8-C10)	39.9	5.00	40.00	0	99.9	80	120				
Aromatic Hydrocarbon (C10-C12)	22.5	5.00	20.00	0	113	80	120				
Aromatic Hydrocarbon (C12-C16)	21.4	5.00	20.00	0	107	80	120				
Aromatic Hydrocarbon (C16-C21)	21.5	5.00	20.00	0	108	80	120				
Aromatic Hydrocarbon (C21-C34)	20.3	5.00	20.00	0	102	80	120				
Surr: 1-Chlorooctadecane	42.7		40.00		107	80	120				
Surr: o-Terphenyl	39.5		40.00		96.7	80	120				

Sample ID: LCS-1227	SampType: LCS	Units: mg/Kg	Prep Date: 10/6/2011	RunNo: 2040							
Client ID: LCSS	Batch ID: 1227		Analysis Date: 10/6/2011	SeqNo: 36127							
Analyte	Result	RL	SPK value	SPK Ref Val	%REC	LowLimit	HighLimit	RPD Ref Val	%RPD	RPDLimit	Qual
Aliphatic Hydrocarbon (C8-C10)	44.0	5.00	40.00	0	110	65	140				
Aliphatic Hydrocarbon (C10-C12)	24.1	5.00	20.00	0	120	65	140				
Aliphatic Hydrocarbon (C12-C16)	19.3	5.00	20.00	0	96.4	65	140				
Aliphatic Hydrocarbon (C16-C21)	20.1	5.00	20.00	0	100	65	140				
Aliphatic Hydrocarbon (C21-C34)	25.4	5.00	20.00	0	127	65	140				
Aromatic Hydrocarbon (C8-C10)	34.5	5.00	40.00	0	86.4	65	140				
Aromatic Hydrocarbon (C10-C12)	19.0	5.00	20.00	0	94.8	65	140				
Aromatic Hydrocarbon (C12-C16)	18.4	5.00	20.00	0	92.1	65	140				
Aromatic Hydrocarbon (C16-C21)	23.3	5.00	20.00	0	117	65	140				

Qualifiers: E Value above quantitation range
 ND Not detected at the Reporting Limit
 S Spike recovery outside accepted recovery limits
 H Holding times for preparation or analysis exceeded
 R RPD outside accepted recovery limits
 J Analyte detected below quantitation limits
 RL Reporting Limit



Client: Friedman & Bruya

Collection Date: 9/19/2011 11:45:00 AM

Project: 109253

Lab ID: 1110020-001

Matrix: Soil

Client Sample ID: No. 1 East-N End 7'

Analyses	Result	RL	Qual	Units	DF	Date Analyzed
----------	--------	----	------	-------	----	---------------

Extractable Petroleum Hydrocarbons by NWEPH

Batch ID: 1227

Analyst: SG

Aliphatic Hydrocarbon (C8-C10)	34.0	5.91	H	mg/Kg-dry	1	10/6/2011 3:43:00 PM
Aliphatic Hydrocarbon (C10-C12)	200	5.91	H	mg/Kg-dry	1	10/6/2011 3:43:00 PM
Aliphatic Hydrocarbon (C12-C16)	1,030	5.91	H	mg/Kg-dry	1	10/6/2011 3:43:00 PM
Aliphatic Hydrocarbon (C16-C21)	1,280	5.91	H	mg/Kg-dry	1	10/6/2011 3:43:00 PM
Aliphatic Hydrocarbon (C21-C34)	227	5.91	H	mg/Kg-dry	1	10/6/2011 3:43:00 PM
Aromatic Hydrocarbon (C8-C10)	ND	5.91	H	mg/Kg-dry	1	10/6/2011 3:43:00 PM
Aromatic Hydrocarbon (C10-C12)	ND	5.91	H	mg/Kg-dry	1	10/6/2011 3:43:00 PM
Aromatic Hydrocarbon (C12-C16)	43.7	5.91	H	mg/Kg-dry	1	10/6/2011 3:43:00 PM
Aromatic Hydrocarbon (C16-C21)	285	5.91	H	mg/Kg-dry	1	10/6/2011 3:43:00 PM
Aromatic Hydrocarbon (C21-C34)	46.2	5.91	H	mg/Kg-dry	1	10/6/2011 3:43:00 PM
Surr: 1-Chlorooctadecane	107	65-140	H	%REC	1	10/6/2011 3:43:00 PM
Surr: o-Terphenyl	115	65-140	H	%REC	1	10/6/2011 3:43:00 PM

Qualifiers: B Analyte detected in the associated Method Blank
 E Value above quantitation range
 J Analyte detected below quantitation limits
 RL Reporting Limit

D Dilution was required
 H Holding times for preparation or analysis exceeded
 ND Not detected at the Reporting Limit
 S Spike recovery outside accepted recovery limits



Date: 10/7/2011

QC SUMMARY REPORT
Extractable Petroleum Hydrocarbons by NWEPH

Work Order: 1110020
 CLIENT: Friedman & Bruya
 Project: 109253

Sample ID: CCV-1227	SampType: CCV	Units: mg/Kg	Prep Date: 10/6/2011	RunNo: 2040						
Client ID: CCV	Batch ID: 1227	%REC	LowLimit	HighLimit	RPD Ref Val	%RPD	RPDLimit	Qual		
Analyte	Result	RL	SPK value	SPK Ref Val	SPK Ref Val	LowLimit	HighLimit	RPD Ref Val	RPDLimit	Qual
Aliphatic Hydrocarbon (C8-C10)	41.6	5.00	40.00	0	0	80	120			
Aliphatic Hydrocarbon (C10-C12)	22.1	5.00	20.00	0	0	80	120			
Aliphatic Hydrocarbon (C12-C16)	21.3	5.00	20.00	0	0	80	120			
Aliphatic Hydrocarbon (C16-C21)	19.3	5.00	20.00	0	0	80	120			
Aliphatic Hydrocarbon (C21-C34)	20.0	5.00	20.00	0	0	80	120			
Aromatic Hydrocarbon (C8-C10)	39.9	5.00	40.00	0	0	80	120			
Aromatic Hydrocarbon (C10-C12)	22.5	5.00	20.00	0	0	80	120			
Aromatic Hydrocarbon (C12-C16)	21.4	5.00	20.00	0	0	80	120			
Aromatic Hydrocarbon (C16-C21)	21.5	5.00	20.00	0	0	80	120			
Aromatic Hydrocarbon (C21-C34)	20.3	5.00	20.00	0	0	80	120			
Surr: 1-Chlorooctadecane	42.7		40.00			80	120			
Surr: o-Terphenyl	39.5		40.00			80	120			

Sample ID: LCS-1227	SampType: LCS	Units: mg/Kg	Prep Date: 10/6/2011	RunNo: 2040						
Client ID: LCSS	Batch ID: 1227	%REC	LowLimit	HighLimit	RPD Ref Val	%RPD	RPDLimit	Qual		
Analyte	Result	RL	SPK value	SPK Ref Val	SPK Ref Val	LowLimit	HighLimit	RPD Ref Val	RPDLimit	Qual
Aliphatic Hydrocarbon (C8-C10)	44.0	5.00	40.00	0	0	65	140			
Aliphatic Hydrocarbon (C10-C12)	24.1	5.00	20.00	0	0	65	140			
Aliphatic Hydrocarbon (C12-C16)	19.3	5.00	20.00	0	0	65	140			
Aliphatic Hydrocarbon (C16-C21)	20.1	5.00	20.00	0	0	65	140			
Aliphatic Hydrocarbon (C21-C34)	25.4	5.00	20.00	0	0	65	140			
Aromatic Hydrocarbon (C8-C10)	34.5	5.00	40.00	0	0	65	140			
Aromatic Hydrocarbon (C10-C12)	19.0	5.00	20.00	0	0	65	140			
Aromatic Hydrocarbon (C12-C16)	18.4	5.00	20.00	0	0	65	140			
Aromatic Hydrocarbon (C16-C21)	23.3	5.00	20.00	0	0	65	140			

Qualifiers: E Value above quantitation range
 ND Not detected at the Reporting Limit
 S Spike recovery outside accepted recovery limits
 H Holding times for preparation or analysis exceeded
 R RPD outside accepted recovery limits
 J Analyte detected below quantitation limits
 RL Reporting Limit



Date: 10/7/2011

QC SUMMARY REPORT
Extractable Petroleum Hydrocarbons by NWEPH

Work Order: 1110020
 CLIENT: Friedman & Bruya
 Project: 109253

Sample ID: LCS-1227 SampType: LCS Units: mg/Kg Prep Date: 10/6/2011 RunNo: 2040
 Client ID: LCSS Batch ID: 1227 Analysis Date: 10/6/2011 SeqNo: 36127

Analyte	Result	RL	SPK value	SPK Ref Val	%REC	LowLimit	HighLimit	RPD Ref Val	%RPD	RPDLimit	Qual
Aromatic Hydrocarbon (C21-C34)	22.5	5.00	20.00	0	113	65	140				
Surr: 1-Chlorooctadecane	35.5		40.00		88.9	65	140				
Surr: o-Terphenyl	40.3		40.00		101	65	140				

Sample ID: MB-1227 SampType: MBLK Units: mg/Kg Prep Date: 10/6/2011 RunNo: 2040
 Client ID: MBLKS Batch ID: 1227 Analysis Date: 10/6/2011 SeqNo: 36128

Analyte	Result	RL	SPK value	SPK Ref Val	%REC	LowLimit	HighLimit	RPD Ref Val	%RPD	RPDLimit	Qual
Aliphatic Hydrocarbon (C8-C10)	ND	5.00									
Aliphatic Hydrocarbon (C10-C12)	ND	5.00									
Aliphatic Hydrocarbon (C12-C16)	ND	5.00									
Aliphatic Hydrocarbon (C16-C21)	ND	5.00									
Aliphatic Hydrocarbon (C21-C34)	ND	5.00									
Aromatic Hydrocarbon (C8-C10)	ND	5.00									
Aromatic Hydrocarbon (C10-C12)	ND	5.00									
Aromatic Hydrocarbon (C12-C16)	ND	5.00									
Aromatic Hydrocarbon (C16-C21)	ND	5.00									
Aromatic Hydrocarbon (C21-C34)	ND	5.00									
Surr: 1-Chlorooctadecane	41.3		40.00		103	65	140				
Surr: o-Terphenyl	40.2		40.00		100	65	140				

Qualifiers: E Value above quantitation range H Holding times for preparation or analysis exceeded J Analyte detected below quantitation limits
 ND Not detected at the Reporting Limit R RPD outside accepted recovery limits RL Reporting Limit
 S Spike recovery outside accepted recovery limits

APPENDIX B
SOIL DISPOSAL DOCUMENTATION

Filco Scale Ticket Summary

Address 10816 18th Avenue E

Job Number

ST5693

Disposal of Petroleum-Impacted Soils

Date	Facility	Ticket No.	Truck ID	Gross	Tare	Net Pounds	Net Tons
9/13/2011	LRI	194610	Hamilton	56840	33560	23280	11.64
9/13/2011	LRI	194643	David	52860	24420	28440	14.22
9/13/2011	LRI	194686	Hamilton	61000	34740	26260	13.13
9/13/2011	LRI	194741	David	61460	24880	36580	18.29
9/13/2011	LRI	194773	Hamilton	64620	33860	30760	15.38
9/13/2011	LRI	194831	David	57480	26020	31460	15.73
9/13/2011	LRI	194854	David	66020	33040	32980	16.49
9/13/2011	LRI	194863	David	25980	23880	2100	1.05
9/14/2011	LRI	194956	Bert	51480	24100	27380	13.69
9/14/2011	LRI	194970	David	51780	23980	27800	13.90
9/14/2011	LRI	195015	Bert	53320	24040	29280	14.64
9/14/2011	LRI	195036	David	56040	23960	32080	16.04
9/14/2011	LRI	195067	Bert	58740	23920	34820	17.41
9/14/2011	LRI	195130	David	57680	23860	33820	16.91
9/14/2011	LRI	195137	Bert	50160	23820	26340	13.17
9/15/2011	LRI	195275	Bert	54500	24200	30300	15.15
9/16/2011	LRI	195431	Bert	48660	24080	24580	12.29
9/16/2011	LRI	195438	David	51300	24000	27300	13.65
9/16/2011	LRI	195489	Bert	51980	24060	27920	13.96
9/16/2011	LRI	195514	David	41040	23940	17100	8.55
9/16/2011	LRI	195535	Bert	55200	23940	31260	15.63
9/16/2011	LRI	195558		46620	23920	22700	11.35
9/20/2011	LRI	196045	Andre	39520	38540	980	0.49
Total							302.76

PCRCO, LLC dba LRI-304th
 17925 Meridian St E
 Puyallup, WA 98375

002184 FILCO COMPANY, INC.
 PO BOX 31228
 SEATTLE WA 98103

SITE	TICKET	GRID		WEIGHMASTER	
39	194610			Dana	
DATE IN	DATE OUT	TIME IN	TIME OUT	VEHICLE	ROLL OFF
09/13/11	09/13/11	09:31	09:47		
REFERENCE			ORIGIN		
HAMILTON			OTHER		

Scale 1 Gross Wt. 56840 LB
 Scale 2 Tare Wt. 33560 LB
 Net Weight 23280 LB

Inbound - Charge ticket

QTY.	UNIT	DESCRIPTION	RATE	EXTENSION	FEE	TOTAL
11.64	TON	83 SOIL DISPOSAL-OC				

Operating hours 8AM to 4PM M-F & 8AM to Noon on Sat.
 304th Landfill-30919 Meridian/SR 161, Graham, WA

PO # WDA 1520
 NOTES LLOYDS 128

NET AMOUNT
TENDERED
CHECK NO.

02.TS TO REORDER CONTACT NORTH STAR FORMS, LLC (877) 499-0482

SIGNATURE _____

PCRCO, LLC dba LRI-304th
 17925 Meridian St E
 Puyallup, WA 98375

002184 FILCO COMPANY, INC.
 PO BOX 31228
 SEATTLE WA 98103

SITE	TICKET	GRID		WEIGHMASTER	
39	194643			Dana	
DATE IN	DATE OUT	TIME IN	TIME OUT	VEHICLE	ROLL OFF
09/13/11	09/13/11	10:19	10:32		
REFERENCE			ORIGIN		
DAVID			OTHER		

Scale 1 Gross Wt. 52860 LB
 Scale 2 Tare Wt. 24420 LB
 Net Weight 28440 LB

Inbound - Charge ticket

QTY.	UNIT	DESCRIPTION	RATE	EXTENSION	FEE	TOTAL
14.22	TON	83 SOIL DISPOSAL-OC				

Operating hours 8AM to 4PM M-F & 8AM to Noon on Sat.
 304th Landfill-30919 Meridian/SR 161, Graham, WA

PO # WDA 1520
 NOTES LLOYDS 116

NET AMOUNT
TENDERED
CHECK NO.

SIGNATURE _____

PCRCO, LLC dba LRI-304th
 17925 Meridian St E
 Puyallup, WA 98375

002184 FILCO COMPANY, INC.
 PO BOX 31228
 SEATTLE WA 98103

SITE	TICKET	GRID		WEIGHMASTER	
39	194686			Dana	
DATE IN	DATE OUT	TIME IN	TIME OUT	VEHICLE	ROLL OFF
09/13/11	09/13/11	11:08	11:18		
REFERENCE			ORIGIN		
HAMILTON			OTHER		

Scale 1 Gross Wt. 61000 LB
 Scale 2 Tare Wt. 34740 LB
 Net Weight 26260 LB

Inbound - Charge ticket

QTY.	UNIT	DESCRIPTION	RATE	EXTENSION	FEE	TOTAL
13.13	TON	83 SOIL DISPOSAL-OC				

Operating hours 8AM to 4PM M-F & 8AM to Noon on Sat.
 304th Landfill-30919 Meridian/SR 161, Graham, WA

PO # WDA 1520
 NOTES LLOYDS 128

NET AMOUNT
TENDERED
CHECK NO.

02.TS TO REORDER CONTACT NORTH STAR FORMS, LLC (877) 499-0492 SIGNATURE _____

PCRCO, LLC dba LRI-304th
 17925 Meridian St E
 Puyallup, WA 98375

002184 FILCO COMPANY, INC.
 PO BOX 31228
 SEATTLE WA 98103

SITE	TICKET	GRID		WEIGHMASTER	
39	194741			Dana	
DATE IN	DATE OUT	TIME IN	TIME OUT	VEHICLE	ROLL OFF
09/13/11	09/13/11	12:16	12:26		
REFERENCE			ORIGIN		
DAVID			OTHER		

Scale 1 Gross Wt. 61460 LB
 Scale 2 Tare Wt. 24880 LB
 Net Weight 36580 LB

Inbound - Charge ticket

QTY.	UNIT	DESCRIPTION	RATE	EXTENSION	FEE	TOTAL
18.29	TON	83 SOIL DISPOSAL-OC				

Operating hours 8AM to 4PM M-F & 8AM to Noon on Sat.
 304th Landfill-30919 Meridian/SR 161, Graham, WA

PO # WDA 1520
 NOTES LLOYDS 116

NET AMOUNT
TENDERED
CHECK NO.

PCRCO, LLC dba LRI-304th
 17925 Meridian St E
 Puyallup, WA 98375

002184 FILCO COMPANY, INC.
 PO BOX 31228
 SEATTLE WA 98103

SITE	TICKET	GRID		WEIGHMASTER	
39	194773			Dana	
DATE IN	DATE OUT	TIME IN	TIME OUT	VEHICLE	ROLL OFF
09/13/11	09/13/11	12:57	13:06		
REFERENCE			ORIGIN		
HAMILTON			OTHER		

Scale 1 Gross Wt. 64620 LB
 Scale 2 Tare Wt. 33860 LB
 Net Weight 30760 LB
 Inbound - Charge ticket

QTY.	UNIT	DESCRIPTION	RATE	EXTENSION	FEE	TOTAL
15.38	TON	83 SOIL DISPOSAL-OC				

Operating hours 8AM to 4PM M-F & 8AM to NOON on Sat.
 304th Landfill-30919 Meridian/SR 161, Graham, WA

PO # WDA 1520
 NOTES LLOYDS 128

NET AMOUNT
TENDERED
CHECK NO.

22.TS TO REORDER CONTACT NORTH STAR FORMS, LLC (877) 499-0492

SIGNATURE _____

PCRCO, LLC dba LRI-304th
 17925 Meridian St E
 Puyallup, WA 98375

002184 FILCO COMPANY, INC.
 PO BOX 31228
 SEATTLE WA 98103

SITE	TICKET	GRID		WEIGHMASTER	
39	194831			Dana	
DATE IN	DATE OUT	TIME IN	TIME OUT	VEHICLE	ROLL OFF
09/13/11	09/13/11	14:19	14:26		
REFERENCE			ORIGIN		
DAVID			OTHER		

Scale 1 Gross Wt. 57480 LB
 Scale 2 Tare Wt. 26020 LB
 Net Weight 31460 LB
 Inbound - Charge ticket

QTY.	UNIT	DESCRIPTION	RATE	EXTENSION	FEE	TOTAL
15.73	TON	83 SOIL DISPOSAL-OC				

Operating hours 8AM to 4PM M-F & 8AM to Noon on Sat.
 304th Landfill-30919 Meridian/SR 161, Graham, WA

PO # WDA 1520
 NOTES LLOYD 116

NET AMOUNT
TENDERED
CHECK NO.

PCRCO, LLC dba LRI-304th
 17925 Meridian St E
 Puyallup, WA 98375

002184 FILCO COMPANY, INC.
 PO BOX 31228
 SEATTLE WA 98103

SITE	TICKET	GRID		WEIGHMASTER	
39	194854			Dana	
DATE IN	DATE OUT	TIME IN	TIME OUT	VEHICLE	ROLL OFF
09/13/11	09/13/11	14:42	15:11		
REFERENCE			ORIGIN		
DAVID			OTHER		

Scale 1 Gross Wt. 66020 LB
 Scale 2 Tare Wt. 33040 LB
 Net Weight 32980 LB

Inbound - Charge ticket

QTY.	UNIT	DESCRIPTION	RATE	EXTENSION	FEE	TOTAL
16.49	TON	83 SOIL DISPOSAL-OC				

Operating hours 8AM to 4PM M-F & 8AM to Noon on Sat.
 304th Landfill-30919 Meridian/SR 161, Graham, WA

PO # WDA 1520
 NOTES LLOYDS 128

NET AMOUNT
TENDERED
CHECK NO.

02.TS TO REORDER CONTACT NORTH STAR FORMS, LLC (877) 499-0492

SIGNATURE: _____

PCRCO, LLC dba LRI-304th
 17925 Meridian St E
 Puyallup, WA 98375

002184 FILCO COMPANY, INC.
 PO BOX 31228
 SEATTLE WA 98103

SITE	TICKET	GRID		WEIGHMASTER	
39	194863			Dana	
DATE IN	DATE OUT	TIME IN	TIME OUT	VEHICLE	ROLL OFF
09/13/11	09/13/11	14:56	15:33		
REFERENCE			ORIGIN		
			OTHER		

Scale 1 Gross Wt. 25980 LB
 Scale 2 Tare Wt. 23880 LB
 Net Weight 2100 LB

Inbound - Charge ticket

QTY.	UNIT	DESCRIPTION	RATE	EXTENSION	FEE	TOTAL
1.05	TON	83 SOIL DISPOSAL-OC				

Operating hours 8AM to 4PM M-F & 8AM to Noon on Sat.
 304th Landfill-30919 Meridian/SR 161, Graham, WA

PO # WDA 1520
 NOTES LLOYDS 116

NET AMOUNT
TENDERED
CHECK NO.

02.TS TO REORDER CONTACT NORTH STAR FORMS, LLC (877) 499-0492

SIGNATURE: _____

PCRCO, LLC dba LRI-304th
 17925 Meridian St E
 Puyallup, WA 98375

002184 FILCO COMPANY, INC.
 PO BOX 31228
 SEATTLE WA 98103

SITE	TICKET	GRID		WEIGHMASTER	
39	194956			Dana	
DATE IN	DATE OUT	TIME IN	TIME OUT	VEHICLE	ROLL OFF
09/14/11	09/14/11	09:56	10:04		
REFERENCE			ORIGIN		
BERT			OTHER		

Scale 1 Gross Wt. 51480 LB
 Scale 2 Tare Wt. 24100 LB
 Net Weight 27380 LB

Inbound - Charge ticket

QTY.	UNIT	DESCRIPTION	RATE	EXTENSION	FEE	TOTAL
13.69	TON	83 SOIL DISPOSAL-OC				

Operating hours 8AM to 4PM M-F & 8AM to Noon on Sat.
 304th Landfill-30919 Meridian/SR 161, Graham, WA

PO # WDA 1520
 NOTES LLOYDS 114

NET AMOUNT
TENDERED
CHANGE
CHECK NO.

02.TS TO REORDER CONTACT NORTH STAR FORMS, LLC (877) 499-0492

SIGNATURE _____

PCRCO, LLC dba LRI-304th
 17925 Meridian St E
 Puyallup, WA 98375

002184 FILCO COMPANY, INC.
 PO BOX 31228
 SEATTLE WA 98103

SITE	TICKET	GRID		WEIGHMASTER	
39	194970			Dana	
DATE IN	DATE OUT	TIME IN	TIME OUT	VEHICLE	ROLL OFF
09/14/11	09/14/11	10:12	10:27		
REFERENCE			ORIGIN		
DAVID			OTHER		

Scale 1 Gross Wt. 51780 LB
 Scale 2 Tare Wt. 23980 LB
 Net Weight 27800 LB

Inbound - Charge ticket

QTY.	UNIT	DESCRIPTION	RATE	EXTENSION	FEE	TOTAL
13.90	TON	83 SOIL DISPOSAL-OC				

Operating hours 8AM to 4PM M-F & 8AM to Noon on Sat.
 304th Landfill-30919 Meridian/SR 161, Graham, WA

PO # WDSA 1520
 NOTES LLOYDS 116

NET AMOUNT
TENDERED
CHANGE
CHECK NO.

PCRCO, LLC dba LRI-304th
 17925 Meridian St E
 Puyallup, WA 98375

02184 FILCO COMPANY, INC.
 PO BOX 31228
 SEATTLE WA 98103

SITE	TICKET	GRID		WEIGHMASTER	
39	195015			Dana	
DATE IN	DATE OUT	TIME IN	TIME OUT	VEHICLE	ROLL OFF
09/14/11	09/14/11	11:33	11:42		
REFERENCE			ORIGIN		
BERT			OTHER		

Scale 1 Gross Wt. 53320 LB Inbound - Charge ticket
 Scale 2 Tare Wt. 24040 LB
 Net Weight 29280 LB

QTY.	UNIT	DESCRIPTION	RATE	EXTENSION	FEE	TOTAL
14.64	TON	83 SOIL DISPOSAL-OC				

Operating hours 8AM to 4PM M-F & 8AM to Noon on Sat.
 04th Landfill-30919 Meridian/SR 161, Graham, WA

NET AMOUNT
TENDERED
CHECK NO.

PO # WDA 1520
 NOTES LLOYDS 114

2 TS TO REORDER CONTACT NORTH STAR FORMS, LLC (877) 499-0492 SIGNATURE

PCRCO, LLC dba LRI-304th
 17925 Meridian St E
 Puyallup, WA 98375

02184 FILCO COMPANY, INC.
 PO BOX 31228
 SEATTLE WA 98103

SITE	TICKET	GRID		WEIGHMASTER	
39	195036			Dana	
DATE IN	DATE OUT	TIME IN	TIME OUT	VEHICLE	ROLL OFF
09/14/11	09/14/11	12:10	12:20		
REFERENCE			ORIGIN		
DAVID			OTHER		

Scale 1 Gross Wt. 56040 LB Inbound - Charge ticket
 Scale 2 Tare Wt. 23960 LB
 Net Weight 32080 LB

QTY.	UNIT	DESCRIPTION	RATE	EXTENSION	FEE	TOTAL
16.04	TON	83 SOIL DISPOSAL-OC				

Operating hours 8AM to 4PM M-F & 8AM to Noon on Sat.
 304th Landfill-30919 Meridian/SR 161, Graham, WA

NET AMOUNT
TENDERED
CHECK NO.

PO # WDA 1520
 NOTES LLOYDS 116

2 TS TO REORDER CONTACT NORTH STAR FORMS, LLC (877) 499-0492 SIGNATURE

PCRCO, LLC dba LRI-304th
 17925 Meridian St E
 Puyallup, WA 98375

02184 FILCO COMPANY, INC.
 PO BOX 31228
 SEATTLE WA 98103

SITE	TICKET	GRID	WEIGHMASTER			
39	195067		Dana			
DATE IN	DATE OUT	TIME IN	TIME OUT	VEHICLE	ROLL OFF	
09/14/11	09/14/11	13:10	13:19			
REFERENCE			ORIGIN			
BERT			OTHER			

Scale 1 Gross Wt. 58740 LB
 Scale 2 Tare Wt. 23920 LB
 Net Weight 34820 LB

Inbound - Charge ticket

QTY	UNIT	DESCRIPTION	RATE	EXTENSION	FEE	TOTAL
17.41	TON	83 SOIL DISPOSAL-OC				

Operating hours 8AM to 4PM M-F & 8AM to Noon on Sat.
 304th Landfill-30919 Meridian/SR 161, Graham, WA

PO # WDA 1520
 NOTES LLOYD 114

NET AMOUNT
TENDERED
CHANGE
CHECK NO.

2.TS TO REORDER CONTACT NORTH STAR FORMS, LLC (877) 499-0492

SIGNATURE _____

PCRCO, LLC dba LRI-304th
 7925 Meridian St E
 Puyallup, WA 98375

02184 FILCO COMPANY, INC.
 PO BOX 31228
 SEATTLE WA 98103

SITE	TICKET	GRID	WEIGHMASTER			
39	195130		Dana			
DATE IN	DATE OUT	TIME IN	TIME OUT	VEHICLE	ROLL OFF	
09/14/11	09/14/11	5:14	5:24			
REFERENCE			ORIGIN			
D			OTHER			

Scale 1 Gross Wt. 57680 LB
 Manual Tare Wt. 23860 LB
 Net Weight 33820 LB

Inbound - Charge ticket

QTY	UNIT	DESCRIPTION	RATE	EXTENSION	FEE	TOTAL
16.91	TON	83 SOIL DISPOSAL-OC				

Operating hours 8AM to 4PM M-F & 8AM to Noon on Sat.
 304th Landfill-30919 Meridian/SR 161, Graham, WA

PO # WDA 1520
 NOTES LOYDS 116

NET AMOUNT
TENDERED
CHECK NO.

PCRCO, LLC dba LRI-304th
 17925 Meridian St E
 Puyallup, WA 98375

002184 FILCO COMPANY, INC.
 PO BOX 31228
 SEATTLE WA 98103

SITE	TICKET	GRID	WEIGHMASTER		
39	195137		Dana		
DATE IN	DATE OUT	TIME IN	TIME OUT	VEHICLE	ROLL OFF
09/14/11	09/14/11	15:52	15:57		
REFERENCE			ORIGIN		
BERT			OTHER		

Manual Gross Wt. 50160 LB Inbound - Charge ticket
 Scale 2 Tare Wt. 23820 LB
 Net Weight 26340 LB

QTY	UNIT	DESCRIPTION	RATE	EXTENSION	FEE	TOTAL
13.17	TON	83 SOIL DISPOSAL-OC				

Operating hours 8AM to 4PM M-F & 8AM to Noon on Sat.
 304th Landfill-30919 Meridian/SR 161, Graham, WA

PO # WDA 1520
 NOTES LLOYDS 114

NET AMOUNT
TENDERED
CHANGE
CHECK NO.

2 TS TO REORDER CONTACT NORTH STAR FORMS, LLC (877) 499-0492 SIGNATURE

PCRCO, LLC dba LRI-304th
 17925 Meridian St E
 Puyallup, WA 98375

002184 FILCO COMPANY, INC.
 PO BOX 31228
 SEATTLE WA 98103

SITE	TICKET	GRID	WEIGHMASTER		
39	195275		Robin		
DATE IN	DATE OUT	TIME IN	TIME OUT	VEHICLE	ROLL OFF
09/15/11	09/15/11	12:45	12:56		
REFERENCE			ORIGIN		
BURT			OTHER		

Manual Gross Wt. 54500 LB Inbound - Charge ticket
 Scale 2 Tare Wt. 24200 LB
 Net Weight 30300 LB

QTY	UNIT	DESCRIPTION	RATE	EXTENSION	FEE	TOTAL
15.15	TON	83 SOIL DISPOSAL-OC				

Operating hours 8AM to 4PM M-F & 8AM to Noon on Sat.
 304th Landfill-30919 Meridian/SR 161, Graham, WA

PO # WDA 1520
 NOTES LLOYD 114

NET AMOUNT
TENDERED
CHANGE
CHECK NO.

CRCD, LLC dba LRI-304th
 7925 Meridian St E
 Puyallup, WA 98375

02184 FILCO COMPANY, INC.
 PO BOX 31228
 SEATTLE WA 98103

SITE	TICKET	GRID	WEIGHMASTER			
39	195431		Dana			
DATE IN	DATE OUT	TIME IN	TIME OUT	VEHICLE	ROLL OFF	
09/16/11	09/16/11	10:10	10:18			
REFERENCE			ORIGIN			
BERT			OTHER			

Scale 1 Gross Wt. 48660 LB
 Scale 2 Tare Wt. 24080 LB
 Net Weight 24580 LB

Inbound - Charge ticket

QTY.	UNIT	DESCRIPTION	RATE	EXTENSION	FEE	TOTAL
12.29	TON	83 SOIL DISPOSAL-OC				

Operating hours 8AM to 4PM M-F & 8AM to Noon on Sat.
 304th Landfill-30919 Meridian/SR 161, Graham, WA

PO # WDA 1520
 NOTES LLOYDS 114

NET AMOUNT
TENDERED
CHECK NO.

2.TS TO REORDER CONTACT NORTH STAR FORMS, LLC (877) 499-0492

SIGNATURE _____

CRCD, LLC dba LRI-304th
 7925 Meridian St E
 Puyallup, WA 98375

02184 FILCO COMPANY, INC.
 PO BOX 31228
 SEATTLE WA 98103

SITE	TICKET	GRID	WEIGHMASTER			
39	195438		Dana			
DATE IN	DATE OUT	TIME IN	TIME OUT	VEHICLE	ROLL OFF	
09/16/11	09/16/11	10:30	10:40			
REFERENCE			ORIGIN			
			OTHER			

Scale 1 Gross Wt. 51300 LB
 Scale 2 Tare Wt. 24000 LB
 Net Weight 27300 LB

Inbound - Charge ticket

QTY.	UNIT	DESCRIPTION	RATE	EXTENSION	FEE	TOTAL
13.65	TON	83 SOIL DISPOSAL-OC				

Operating hours 8AM to 4PM M-F & 8AM to Noon on Sat.
 304th Landfill-30919 Meridian/SR 161, Graham, WA

PO # WDA 1520
 NOTES LLOYDS 116

NET AMOUNT
TENDERED
CHECK NO.

SIGNATURE _____

PCRCO, LLC dba LRI-304th
 17925 Meridian St E
 Puyallup, WA 98375

002184 FILCO COMPANY, INC.
 PO BOX 31228
 SEATTLE WA 98103

SITE	TICKET	GRID		WEIGHMASTER	
39	195489			Dana	
DATE IN	DATE OUT	TIME IN	TIME OUT	VEHICLE	ROLL OFF
09/16/11	09/16/11	11:52	12:00		
REFERENCE			ORIGIN		
BERT			OTHER		

Scale 1 Gross Wt. 51980 LB
 Scale 2 Tare Wt. 24060 LB
 Net Weight 27920 LB

Inbound - Charge ticket

QTY.	UNIT	DESCRIPTION	RATE	EXTENSION	FEE	TOTAL
13.96	TON	03 SOIL DISPOSAL-OC				

Operating hours 8AM to 4PM M-F & 8AM to Noon on Sat.
 304th Landfill-30919 Meridian/SR 161, Graham, WA

PO # WDA 1520
 NOTES LLOYD 114

NET AMOUNT
TENDERED
CHECK NO.

02.TS TO REORDER CONTACT NORTH STAR FORMS, LLC (877) 499-0492

SIGNATURE _____

PCRCO, LLC dba LRI-304th
 17925 Meridian St E
 Puyallup, WA 98375

002184 FILCO COMPANY, INC.
 PO BOX 31228
 SEATTLE WA 98103

SITE	TICKET	GRID		WEIGHMASTER	
39	195514			Dana	
DATE IN	DATE OUT	TIME IN	TIME OUT	VEHICLE	ROLL OFF
09/16/11	09/16/11	12:45	12:56		
REFERENCE			ORIGIN		
			OTHER		

Scale 1 Gross Wt. 41040 LB
 Scale 2 Tare Wt. 23940 LB
 Net Weight 17100 LB

Inbound - Charge ticket

QTY.	UNIT	DESCRIPTION	RATE	EXTENSION	FEE	TOTAL
8.55	TON	63 SOIL DISPOSAL-OC				

Operating hours 8AM to 4PM M-F & 8AM to Noon on Sat.
 304th Landfill-30919 Meridian/SR 161, Graham, WA

PO # WDA 1520
 NOTES KLLOYDS 116

NET AMOUNT
TENDERED
CHECK NO.

****DUPLICATE TICKET****
 PCRCO, LLC dba LRI-304th ST
 17925 Meridian St E
 Puyallup, WA 98375

002184 FILCO COMPANY, INC.
 PO BOX 31228
 SEATTLE WA 98103

SITE	TICKET	GRID	WEIGHMASTER			
39	195535					
DATE IN	DATE OUT	TIME IN	TIME OUT	VEHICLE	ROLL OFF	
09/16/11	09/16/11	3:49	3:57			
REFERENCE			ORIGIN			
BERT			OTHER			

Scale 1 Gross Wt. 55200 LB
 Scale 2 Tare Wt. 23940 LB

Inbound - Charge ticket

QTY.	Net Weight	DESCRIPTION	RATE	EXTENSION	FEE	TOTAL
15.63	TON	83 SOIL DISPOSAL-OC				

Operating hours 8AM to 4PM M-F & 8AM to Noon on Sat.
 304th Landfill-30919 Meridian/SR 161, Graham, WA

PO # WDA 1520
 NOTES LLOYDS 114

NET AMOUNT
TENDERED
CHANGE
CHECK NO.

****DUPLICATE TICKET****
 PCRCO, LLC dba LRI-304th ST
 17925 Meridian St E
 Puyallup, WA 98375

002184 FILCO COMPANY, INC.
 PO BOX 31228
 SEATTLE WA 98103

SITE	TICKET	GRID	WEIGHMASTER			
39	195558					
DATE IN	DATE OUT	TIME IN	TIME OUT	VEHICLE	ROLL OFF	
09/16/11	09/16/11	15:40	15:48			
REFERENCE			ORIGIN			
			OTHER			

Scale 1 Gross Wt. 46620 LB
 Manual Tare Wt. 23920 LB

Inbound - Charge ticket

QTY.	Net Weight	DESCRIPTION	RATE	EXTENSION	FEE	TOTAL
11.35	TON	83 SOIL DISPOSAL-OC				

Operating hours 8AM to 4PM M-F & 8AM to Noon on Sat.
 304th Landfill-30919 Meridian/SR 161, Graham, WA

PO # WDA 1520
 NOTES LLOYDS 116

NET AMOUNT
TENDERED
CHANGE
CHECK NO.

SIGNATURE

****DUPLICATE TICKET****
 PCRCD, LLC dba LRI-304th ST
 17925 Meridian St E
 Puyallup, WA 98375

002184 FILCO COMPANY, INC.
 PO BOX 31228
 SEATTLE WA 98103

SITE		TICKET		GRID		WEIGHMASTER	
39		196045					
DATE IN	DATE OUT	TIME IN	TIME OUT	VEHICLE	ROLL OFF		
09/20/11	09/20/11	09:41	09:59				
REFERENCE				ORIGIN			
ANDRE				OTHER			

Scale 1 Gross Wt. 39520 LB
 Scale 2 Tare Wt. 38540 LB

Inbound - Charge ticket

QTY.	Net Weight	DESCRIPTION	RATE	EXTENSION	FEE	TOTAL
0.49	TON	83 SOIL DISPOSAL-OC				

Operating hours 8AM to 4PM M-F & 8AM to Noon on Sat.
 304th Landfill-30919 Meridian/SR 161, Graham, WA

PO # WDA 150
 NOTES LLOYD 120

NET AMOUNT
TENDERED
CHANGE
CHECK NO.

202.TS TO REORDER CONTACT NORTH STAR FORMS, LLC (877) 489-0492 SIGNATURE _____

APPENDIX C
PERMITS



Fire Prevention Bureau
 2401 South 35th Street, Suite 2
 Tacoma, Washington 98409
 www.piercecountywa.org/pals
 Information & Inspections: 253-798-7179 (Note: Residential LPG Inspections call 253-798-3152)

Permit No: **710537**
 Application Date: 06/13/2011
 Issued Date: 06/21/2011

Flam/Comb Tank Removal Permit

This permit is issued by Pierce County giving SEATTLE TANK SERVICE/PHIL SUETENS permission according to approved plans, application, and restrictions on record to: DECOMMISSION 3 UST (approx. 675 gallons each) filled with heating oil: pump out tanks, remove and properly dispose of tanks. Remove and seal below grade 3 each vent pipes. Grade, back fill the excavation site, compact and rake all 3 areas smooth.

Site Address: 10816 18TH AVE E 9844
 Proj. Appl Name: MIDLAND MANOR

RTSQQ: 03190343
 Parcel No(s): 0319034012
 Fire District/Area: 06 / G

Property Owner: MIDLAND MANOR LLC
 7235 INTERLAAKEN DR SW
 TACOMA WA 98499

Applicant: SEATTLE TANK SERVICE/PHIL SUETENS
 PO BOX 31516
 SEATTLE WA 98103

Phone No: 206-938-2280

Fee Amount	Fee Description	Quantity	Fee (\$/sq ft)
\$215.00	Flam/Comb Lqd Rm/Abandon 1st Tank		
\$190.00	Flam/Comb Lqd Rm/Abandon Ea Add'l	2	
\$405.00	Total Fees		
\$405.00	Total Paid		
\$0.00	Balance Due		



Fire Prevention Bureau
2401 South 35th Street, Suite 2
Tacoma, Washington 98409
www.piercecountywa.org/pals

Information & Inspections: 253-798-7179 (Note: Residential LPG Inspections call 253-798-3152)

Permit No: 710537
Application Date: 06/13/2011
Issued Date: 06/21/2011

Flam/Comb Tank Removal Permit

This non-transferable permit expires on 6/15/2012.

- Pierce County's approval (issuance) of this permit or decision pertains only to the County's regulatory jurisdiction and thus compliance with County regulations does not necessarily ensure compliance with other federal or state laws.

A handwritten signature in black ink, appearing to be "MOR", written over a horizontal line.

Not valid without authorized signature.

Review Comments:

Removal of aboveground or underground tanks shall be in accordance with the following:

- 1) Flammable or combustible liquids shall be removed from the tank and connected piping,
- 2) Piping at tank openings which is not to be used further shall be disconnected,
- 3) Piping shall be removed from the ground.

Exception: Piping is allowed to be abandoned in place when the Fire Marshal determines that removal is not practical.

Abandoned piping shall be capped and safeguarded as required by the Fire Marshal.

- 4) All exterior above-grade fill and vent piping shall be removed.
- 5) Tank openings shall be capped or plugged, leaving a 1/8-inch to 1/4-inch diameter opening for pressure equalization.
- 5) Tanks shall be purged of vapor and inerted prior to removal.
- 6) FPB inspection required after inerting but BEFORE removal.

Disposal of tanks shall be in accordance with federal, state and local regulations (3404.2.14.2).



Tacoma - Pierce County Health Department
Healthy People in Healthy Communities

WASTE DISPOSAL AUTHORIZATION

(XX) Non-Asbestos (XX) New
() Asbestos (PSCAA Case #) () Amendment

- A. Generator Name: Midland Manner (Assisted Living Facility)
- B. Generator Address: 10816 18th Ave East, Tacoma WA
- C. Transporter Names: Contract Hauler
- D. Technical Contact: Phil Suetens, Filco Company, Inc. Environmental Services Phone: (206)972-1394
- E. Waste Description: Petroleum contaminated soil (home heating oil tank remediation)
 Sludge Solid Contaminated Soil Other
- F. Approved Quantity: 120 Tons Authorized
- G. Actual Quantity (Filled in upon disposal): _____
- H. Multiple Loads: Yes No
- I. Dates of Disposal: September 9, 2011 through December 31, 2011
- J. Testing: NWTPH-Dx
- K. Reviewed by Department of Ecology: Yes No
- L. Disposal/Transportation Requirements A copy of this WDA must be transported with EACH load of waste and presented to the LRI Landfill Scalehouse Operator. Soils demonstrating excessive odors are not suitable for use as daily cover and shall be directly buried (disposed of) in the landfill. If odors are not excessive and the soils physical characteristics are suitable for utilization as a daily cover then the soils may be used as alternative daily cover. If soils are dry and a potential for windblown dust exists, loads shall be covered. Wastes may have no free liquids (waste must pass the paint filter test). Generator shall add bulking agents to waste if needed, to absorb free liquids.
- M. Facility: LRI Landfill (304th Street LF)

CERTIFICATION

I hereby certify that I have personally examined and am familiar with the information submitted in this document and any supporting material. Based on my inquiry of those individuals immediately responsible for obtaining the information, the information submitted is true, accurate and complete to the best of my knowledge and ability and that all known and suspected hazards have been disclosed. I agree that the generator and/or transporter will abide by all conditions specified in line (L) or any attachments thereto.

9-12-2011 Filco
Date Title ESTIMATOR

Timothy R. Ayres
Signature

AUTHORIZED BY:
Andy Comstock
Andy Comstock (253) 798-6538

Cc: LRI Scalehouse fax (253) 875-7205

RECEIVED

JUN 10 2011

SEATTLE Tank Services
P.O. Box 31516
Seattle WA 98103
206-938-2280

PIERCE COUNTY FIRE
PREVENTION BUREAU

Lic# SEATTTT01204 EXP. 10/21, 2012
IPC License # 1035157-42
City License #

SITE PLAN HEATING OIL TANK DECOMMISSIONING

Tacoma, WA

JOB SITE ADDRESS: 10816 18TH Ave E. 98445
OWNER: Midland Manor LLC / Midland Nursing home / Judy Chan
ADDRESS: Same as job site address
P-CNE

ACTIVITY:

(Pump, Clean, and Fill)

Pump & clear 1 gallon underground heating oil tanks Fill with Structural Polyurethane Foam. Cut off or remove vent and filler pipes and cap them permanently below grade.

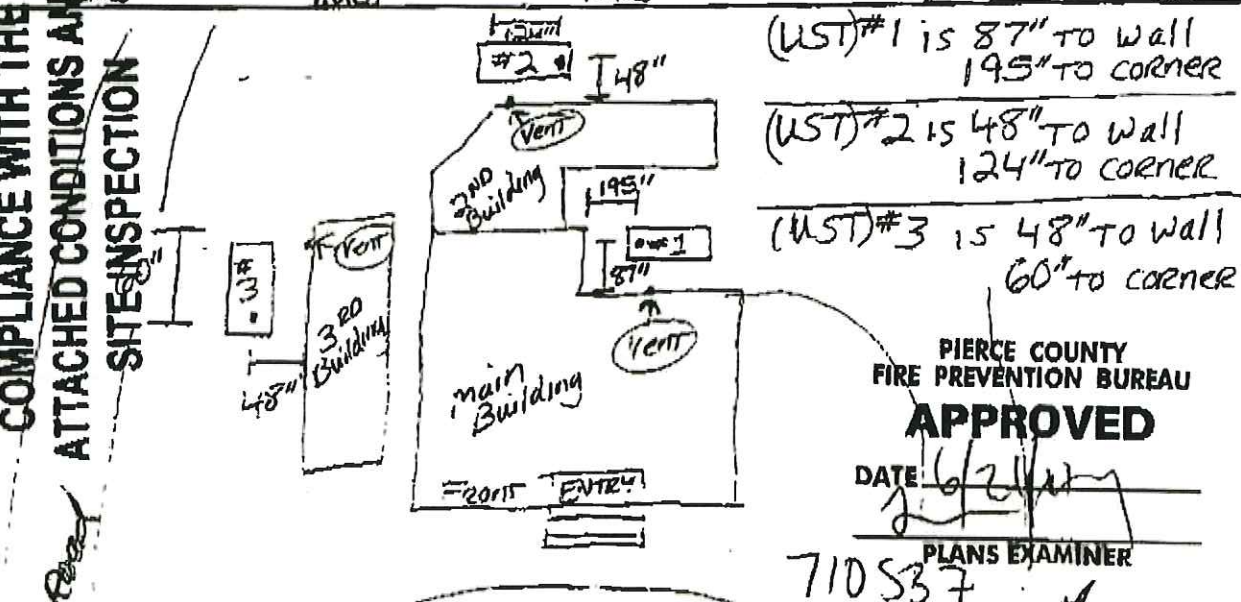
(Pump, Clean, and Cap)

Pump & Clean (Triple rinse) one gallon underground heating oil tank. Cut off or remove vent and filler pipes and cap them permanently below grade.

(Removal)

Pump out one ^{3 each} ₆₇₅ gallon underground heating oil tanks Excavate and remove tank then back fill hole and dispose of tanks in the proper manner.

APPROVAL CONTINGENT ON
COMPLIANCE WITH THE
ATTACHED CONDITIONS AND
SITE INSPECTION



PIERCE COUNTY
FIRE PREVENTION BUREAU

APPROVED

DATE: 6/21/11

PLANS EXAMINER

710537

NOTICE!!!

FIRE PREVENTION BUREAU
INSPECTION REQUIRED.

18TH AVENUE (253) 798-7179 TO SCHEDULE
AT LEAST 24 HOURS IN ADVANCE.



