



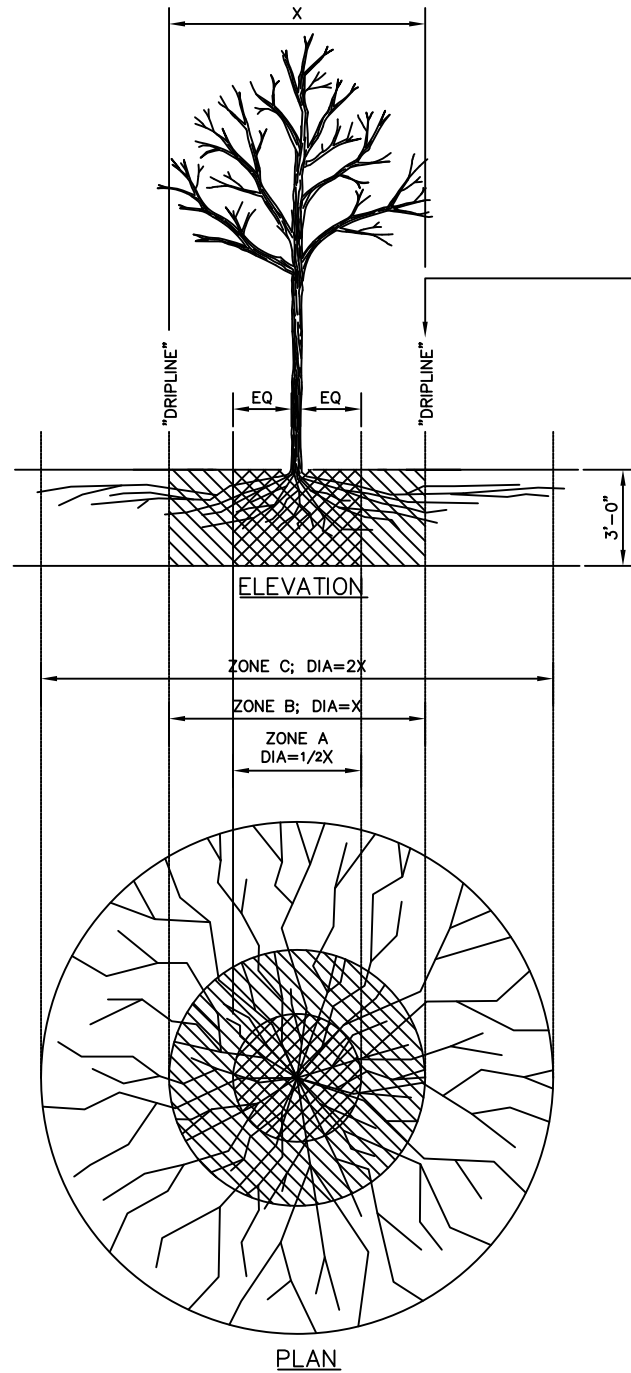


D

C

B

A



**FENCING/ROOT PROTECTION**  
CHAIN LINK FENCING TO BE PROVIDED AND MAINTAINED AT DRIFLINE

ENGINEER'S APPROVAL REQUIRED FOR USE/ACCESS WITHIN ZONE B. PERMISSION FOR USE/ACCESS REQUIRES SURFACE PROTECTION FOR ALL UNFENCED, UNPAVED SURFACES WITHIN ZONE B

- \* SURFACE PROTECTION MEASURES**
- MULCH LAYER, 6"-8"DEPTH
  - 3/4"PLYWOOD
  - STEEL PLATES

- TRENCHING/EXCAVATION**
- ZONE A (CRITICAL ROOT ZONE)**
- NO DISTURBANCE ALLOWED WITHOUT SITE-SPECIFIC INSPECTION AND APPROVAL OF METHODS TO MINIMIZE ROOT DAMAGE
  - SEVERANCE OF ROOTS LARGER THAN 2"DIA REQUIRES ENGINEER'S APPROVAL
  - TUNNELING REQUIRED TO INSTALL LINES 3'-0"BELOW GRADE OR DEEPER

- ZONE B (DRIPLINE)**
- OPERATION OF HEAVY EQUIPMENT AND/OR STOCKPILING OF MATERIALS SUBJECT TO ENGINEERS APPROVAL. SURFACE PROTECTION\* MEASURES REQUIRED
  - TRENCHING ALLOWED AS FOLLOWS:
    - EXCAVATION BY HAND OR WITH HAND-DRIVEN TRENCHER MAY BE REQUIRED
    - LIMIT TRENCH WIDTH. DO NOT DISTURB ZONE A MAINTAIN 2/3 OR MORE OF ZONE B IN UNDISTURBED CONDITION
  - TUNNELING MAY BE REQUIRED FOR TRENCHES DEEPER THAN 3'-0"

- ZONE C (FEEDER ROOT ZONE)**
- OPERATION OF HEAVY EQUIPMENT AND/OR STOCKPILING OF MATERIALS SUBJECT TO ENGINEERS APPROVAL. SURFACE PROTECTION\* MEASURES MAY BE REQUIRED
  - TRENCHING WITH HEAVY EQUIPMENT ALLOWED AS FOLLOWS:
    - MINIMIZE TRENCH WIDTH
    - MAINTAIN 2/3 OR MORE OF ZONE C IN UNDISTURBED CONDITION

**TEMPORARY TREE PROTECTION DETAILS**  
NOT TO SCALE

		TREES IN PLANTING STRIPS	TREES IN TREE PITS
HEAVY EQUIPMENT OPERATION	ROOT PROTECTION	ALL NON-PAVED PLANTING STRIP SURFACES SUBJECT TO IMPACT (COMPACTION) BY CONSTRUCTION ACTIVITY SHALL BE PROTECTED WITH 6"-8" MULCH LAYER OR 3/4" PLYWOOD PANELS  PROVIDE WOOD PLANKING OR STEEL PANELS UNDER BACKHOE STABILIZERS PLACED ANYWHERE IN THE PLANTING STRIP [1-07.16(2)]  NO STORAGE OF MATERIALS OR EQUIPMENT IN THE PLANTING STRIP SHALL BE ALLOWED WITHOUT PROPER SURFACE PROTECTION AND WRITTEN AUTHORIZATION FROM THE ENGINEER	RETAIN EXISTING PAVING DURING CONSTRUCTION  SCHEDULE PAVEMENT REPLACEMENT TO MINIMIZE EXPOSURE OF SURFACE ROOTS TO DRYING, EQUIPMENT DAMAGE, COMPACTION, ETC. EXPOSURE FOR LONGER THAN 48 HOURS REQUIRES MULCH APPLICATION
	CANOPY PROTECTION	OVERHEAD BRANCHING LIKELY TO BE DAMAGED BY EQUIPMENT OPERATION SHALL BE BROUGHT TO THE ATTENTION OF THE ENGINEER WITH PREVENTIVE MEASURES (PRUNING OR TIE-BACK OF BRANCHES) APPROVED BY THE ENGINEER AND PROPERLY EXECUTED BEFORE COMMENCEMENT OF THE WORK	
	TRUNK PROTECTION	PROVIDE CHAIN LINK CONSTRUCTION FENCE IN INDIVIDUAL FENCE INSTALLATIONS FOR EACH TREE OR THE LENGTH OF THE PLANTING STRIP.	PROVIDE 5'-0"MIN HEIGHT FENCE INSTALLATIONS FOR EACH TREE TO ENCLOSE ENTIRE TREE PIT OPENING.
SIDEWALK RECONSTRUCTION	ROOT PRUNE ONLY AS APPROVED BY THE ENGINEER  MAINTAIN 2'-0" MIN CLEARANCE FROM FLARE OF TRUNK WHEN SETTING FORMS.	PROVIDE 5'-0"x5'-0" OR 4'-0"x6'-0" (24 SQ FT MIN) TREE PITS IN NEW SIDEWALK FOR NEW TREES. TREE PIT SIZE FOR EXISTING TREES SHALL BE ELONGATED (8'-0" TO 12'-0"+). PITS MAY BE REQUIRED TO MINIMIZE ROOT IMPACTS WHILE MAINTAINING REQUIRED SIDEWALK WIDTH	
TRENCH OR TUNNELING	SEE STD PLAN NO 133		

**TEMPORARY TREE PROTECTION NOTES**  
NOT TO SCALE



Date	Description	Mark	Appr.

Date: 08/29/12 Rev. 0  
 Job Number: 17800-13  
 Designed by: KR/CJP  
 Drawn by: EAL  
 Checked by: KR/CJP  
 Reviewed by: MIE  
 Submitted by: HART CROWSER, INC.  
 File name: 1780013.dwg  
 Plot date: SEE DRAWING  
 Plot scale: SEE DRAWING

ISSUED FOR BID  
 NE CORNER CAPPING PROJECT

GAS WORKS PARK  
 TEMPORARY TREE PROTECTION

Drawing Reference Number:  
**G-2.1**  
 Sheet 3 of 10

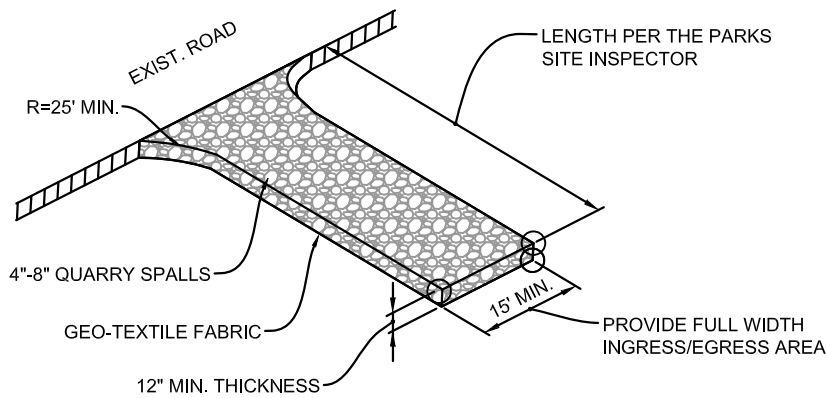


**EROSION/SEDIMENTATION CONTROL NOTES**

1. APPROVAL OF THE EROSION/SEDIMENTATION CONTROL (ESC) PLAN DOES NOT CONSTITUTE AN APPROVAL OF PERMANENT ROAD OR DRAINAGE DESIGN (E.G. SIZE AND LOCATION OF ROADS, PIPES, RESTRICTIONS, CHANNELS, RETENTION FACILITIES, UTILITIES, ETC.)
2. THE IMPLEMENTATION OF THESE ESC PLANS AND THE CONSTRUCTION, MAINTENANCE, REPLACEMENT, AND UPGRADING OF THESE ESC FACILITIES IS THE RESPONSIBILITY OF THE CONTRACTOR UNTIL ALL CONSTRUCTION IS APPROVED.
3. THE ESC FACILITIES SHOWN ON THIS PLAN MUST BE CONSTRUCTED IN CONJUNCTION WITH ALL CLEARING AND GRADING ACTIVITIES, AND IN SUCH A MANNER AS TO INSURE THAT SEDIMENT LADEN WATER DOES NOT ENTER THE DRAINAGE SYSTEM OR VIOLATE APPLICABLE WATER STANDARDS.
4. THE ESC FACILITIES SHOWN ON THIS PLAN ARE THE MINIMUM REQUIREMENTS FOR ANTICIPATED SITE CONDITIONS. DURING THE CONSTRUCTION PERIOD. THESE ESC FACILITIES SHALL BE UPGRADED (E.G. ADDITIONAL SUMPS, RELOCATION OF DITCHES AND SILT FENCES, ETC.) AS NEEDED FOR UNEXPECTED STORM EVENTS.
5. THE ESC FACILITIES SHALL BE INSPECTED DAILY BY THE APPLICANT/CONTRACTOR AND MAINTAINED AS NECESSARY TO ENSURE THEIR CONTINUED FUNCTIONING.
6. ANY AREA STRIPPED OF VEGETATION, INCLUDING ROADWAY EMBANKMENTS, WHERE NO FURTHER WORK IS ANTICIPATED FOR A PERIOD OF 15 DAYS, SHALL BE IMMEDIATELY STABILIZED WITH THE APPROVED ESC METHODS (E.G. SEEDING, MULCHING, NETTING, EROSION BLANKETS, ETC.).
7. THE ESC FACILITIES ON INACTIVE SITES SHALL BE INSPECTED AND MAINTAINED A MINIMUM OF ONCE A MONTH OR WITHIN THE 48 HOURS FOLLOWING A STORM EVENT.
8. AT NO TIME SHALL MORE THAN ONE FOOT OF SEDIMENT BE ALLOWED TO ACCUMULATE WITHIN A CATCH BASIN. ALL CATCH BASINS AND CONVEYANCE LINES SHALL BE CLEANED AT END OF PROJECT. THE CLEANING OPERATION SHALL NOT FLUSH SEDIMENT LADEN WATER INTO THE DOWNSTREAM SYSTEM.
9. STABILIZED CONSTRUCTION ENTRANCES AND WASH PADS SHALL BE INSTALLED AT THE BEGINNING OF CONSTRUCTION (IF REQUIRED) AND MAINTAINED FOR THE DURATION OF THE PROJECT. ADDITIONAL MEASURE MAY BE REQUIRED TO INSURE THAT ALL PAVED AREAS ARE KEPT CLEAN FOR THE DURATION OF THE PROJECT (RCW 46.61.655).
10. DURING THE TIME PERIOD OF NOVEMBER 1 THROUGH MARCH 31, ALL PROJECT DISTURBED AREAS GREATER THAN 5,000 SQUARE FEET THAT ARE TO BE LEFT UNWORKED FOR MORE THAN 12 HOURS SHALL BE COVERED BY ONE OF THE FOLLOWING COVER MEASURES: MULCH, SODDING, OR PLASTIC COVERING.
11. WHERE STRAW MULCH FOR TEMPORARY EROSION CONTROL IS REQUIRED, IT SHALL BE APPLIED AT A MINIMUM THICKNESS OF TWO INCHES.
12. APPROVAL BY DPD OF THE DRAINAGE AND TEMPORARY EROSION CONTROL, PLANS DOES NOT INCLUDE APPROVAL OF THE GRADING SHOWN HEREIN. GRADING ACTIVITIES WITHIN THE RIGHT-OF-WAY REQUIRE A STREET USE PERMIT FROM THE STREET USE SECTION. GRADING ACTIVITIES ON ADJACENT PROPERTIES REQUIRE WRITTEN APPROVAL BY THE ADJACENT PROPERTY OWNER.
13. CATCH BASINS IN THE STREET SHALL BE INSPECTED DAILY BY THE CONTRACTOR. WATER LEAVING THE SITE DURING CONSTRUCTION, INCLUDING WATER CARRIED BY TRUCK TIRES, SHALL BE CLEAN. THE CONTRACTOR SHALL CLEAN CITY CATCH BASINS AND IMPLEMENT EXTRA SEDIMENTATION CONTROL METHODS IF NECESSARY AND AS DIRECTED BY THE STREET USE SECTION INSPECTOR.
14. EXCAVATION SITE DEWATERING THAT INCLUDES DISCHARGE TO THE CITY STREET, CATCH BASIN, OR SEWER SHALL BE IMPLEMENTED ONLY AFTER APPROVAL BY THE STREET USE SECTION INSPECTOR.
15. INSTALL INLET PROTECTION FOR ALL CATCH BASINS WITHIN RIGHT-OF-WAY THAT ARE WITHIN 600 FEET OF THE SITE.

**EROSION/SEDIMENTATION CONTROL NOTES**

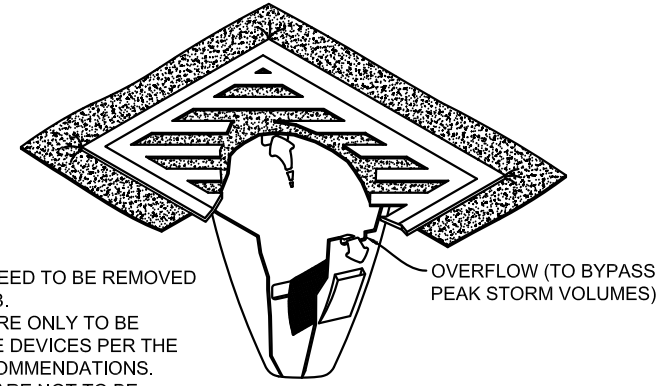
1. FILTER FABRIC SHALL BE INSTALLED ALONG CONTOUR WHENEVER POSSIBLE.
2. THE FILTER FABRIC SHALL BE PURCHASED IN A CONTINUOUS ROLL CUT TO THE LENGTH OF THE BARRIER TO AVOID USE OF JOINTS. WHEN JOINTS ARE NECESSARY, FILTER CLOTH SHALL BE SPLICED TOGETHER ONLY AT A SUPPORT POST, WITH A MINIMUM 6-INCH OVERLAP, AND BOTH ENDS SECURELY FASTENED TO THE POST.
3. THE FENCE POSTS SHALL BE SPACED TO A MAXIMUM OF 6 FEET APART AND DRIVEN SECURELY INTO THE GROUND (MINIMUM OF 30 INCHES).
4. A TRENCH SHALL BE EXCAVATED, ROUGHLY 8 INCHES WIDE AND 12 INCHES DEEP, UPSLOPE AND ADJACENT TO THE WOOD POST TO ALLOW THE FILTER FABRIC TO BE BURIED.
5. WHEN STANDARD STRENGTH FILTER FABRIC IS USED, A WIRE MESH SUPPORT FENCE SHALL BE FASTENED SECURELY TO THE UPSLOPE SIDE OF THE POSTS USING HEAVY-DUTY WIRE STAPLES AT LEAST 1 INCH LONG, TIE WIRES, OR HOG RINGS. THE WIRE SHALL EXTEND INTO THE TRENCH A MINIMUM OF 4 INCHES AND SHALL NOT EXTEND MORE THAN 36 INCHES ABOVE THE ORIGINAL GROUND SURFACE.
6. THE STANDARD STRENGTH FILTER FABRIC SHALL BE STAPLED OR WIRED TO THE FENCE, AND 20 INCHES OF THE FABRIC SHALL BE EXTENDED INTO THE TRENCH. THE FABRIC SHALL NOT EXTEND MORE THAN 36 INCHES ABOVE THE ORIGINAL GROUND SURFACE. FILTER FABRIC SHALL NOT BE STAPLED TO EXISTING TREES.
7. WHEN EXTRA-STRENGTH FILTER FABRIC AND CLOSER POST SPACING ARE USED, THE WIRE MESH SUPPORT FENCE MAY BE ELIMINATED. IN SUCH A CASE, THE FILTER FABRIC IS STAPLED OR WIRED DIRECTLY TO THE POSTS WITH ALL OTHER PROVISIONS OF NOTE 4 APPLYING.
8. FILTER FABRIC FENCES SHALL BE REMOVED WHEN THEY HAVE SERVED THEIR USEFUL PURPOSE, BUT NOT BEFORE THE UPSLOPE ARE HAS BEEN PERMANENTLY STABILIZED.
9. FILTER FABRIC FENCES SHALL BE INSPECTED IMMEDIATELY AFTER EACH RAINFALL AND AT LEAST DAILY DURING PROLONGED RAINFALL. ANY REQUIRED REPAIRS SHALL BE MADE IMMEDIATELY.
10. FABRIC EQUIVALENT OPENING SIZE (EOS) SHALL BE EQUAL TO OR SMALLER THAN THE SIEVE SIZE THAT 85 PERCENT OF THE SOIL CAN PASS THROUGH. THE MINIMUM EOS IS U.S. STANDARD SIEVE NO. 100 (0.0059 IN.).
11. INSTALL FILTER FABRIC FENCE ADJACENT TO EXISTING UNDISTURBED SURFACES WHERE SURFACE DRAINAGE FROM DISTURBED SURFACES TO UNDISTURBED SURFACES CAN OCCUR.



STABILIZING ACCESS SHALL BE USED IN ALL AREAS OF THE SITE WITH VEHICLE TRAFFIC AND PARKING, INCLUDING PLANTING STRIPS. OTHER MEANS OF PROVIDING STABILIZED ACCESS WILL BE CONSIDERED.

**PURPOSE:** TO REDUCE THE AMOUNT OF MUD, DIRT, ROCKS, ETC. TRANSPORTED ONTO PUBLIC ROADS BY MOTOR VEHICLES OR RUNOFF.

**TEMPORARY CONSTRUCTION ENTRANCE**  
NOT TO SCALE

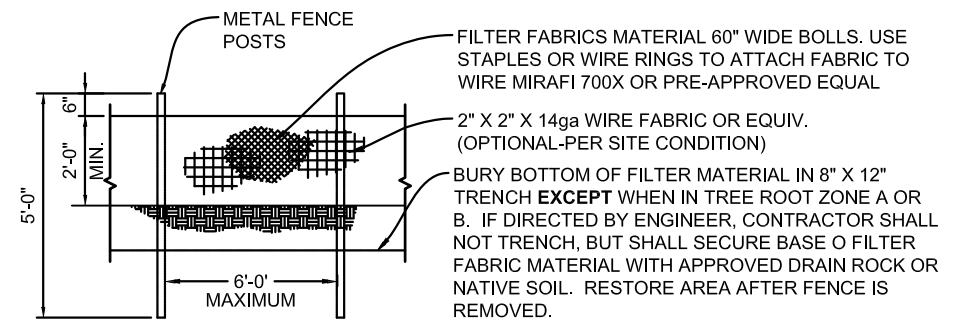


**NOTES:**

1. STORM DRAIN INLETS NEED TO BE REMOVED AT THE END OF THE JOB.
2. STORM DRAIN INLETS ARE ONLY TO BE INSTALLED IN DRAINAGE DEVICES PER THE MANUFACTURER'S RECOMMENDATIONS. CATCH BASIN INSERTS ARE NOT TO BE INSTALLED IN CURB INLETS.
3. INSERTS SHALL BE INSPECTED AND MAINTAINED WHEN A 1/2 INCH RAIN ACCUMULATES WITHIN A 24 HOUR PERIOD. CLEAN AND/OR REPLACE INSERT WHEN HALF OF THE TRAP IS FILLED WITH SEDIMENTS.

**PURPOSE:** TO PREVENT SEDIMENT FROM ENTERING STORM DRAINAGE SYSTEMS PRIOR TO PERMANENT STABILIZATION OF THE DISTURBED AREA.

**STORM DRAIN INLET PROTECTION**  
NOT TO SCALE



**NOTE:** ANGLE SILT FENCE BACK UP THE SLOPE AT THE END OF RUN.

BACKFILL WITH NATIVE SOIL MATERIAL OR GRAVEL BACKFILL IN TRENCH AND ON BOTH SIDES OF FENCE FABRIC ON THE SURFACE

**PURPOSE:** TO INTERCEPT AND DETAIN SMALL AMOUNTS OF SEDIMENT UNDER SHEET FLOW CONDITIONS FROM DISTURBED AREAS DURING CONSTRUCTION AND TO REDUCE THE VELOCITY OF SHEET FLOWS.

**FILTER FABRIC FENCE**  
NOT TO SCALE



Date	Appr.	Mark	Description

Designed by: KR/CP	Date: 08/29/12	Rev. 0
Drawn by: EAL	Job Number: 17800-13	
Checked by: KR/CP		
Reviewed by: MIE		
Submitted by: HART CROWSER, INC.	File name: 1780013-01.dwg	
	Plot date:	
	Plot scale: SEE DRAWING	

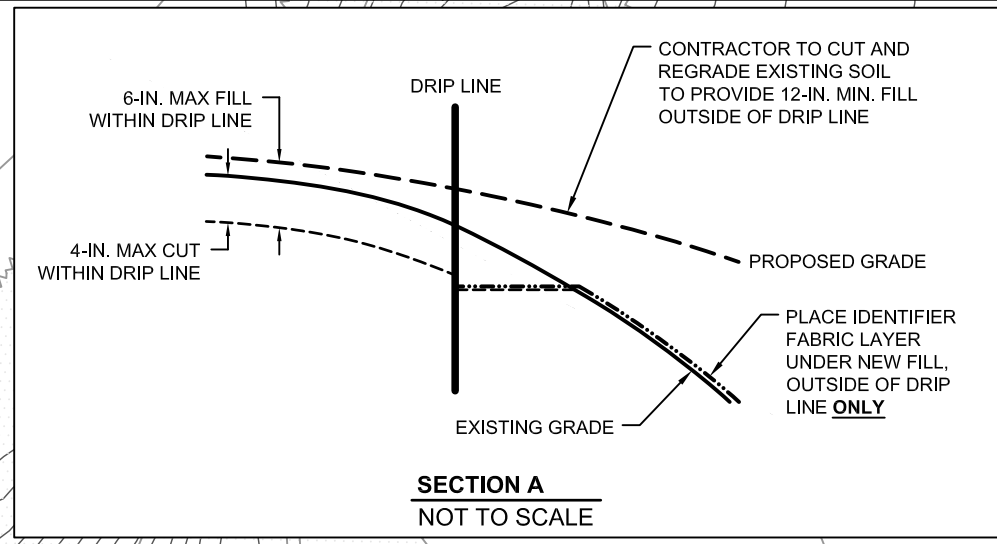
ISSUED FOR BID  
NE CORNER CAPPING PROJECT

GAS WORKS PARK  
TEMPORARY FACILITIES/CONTROLS  
DETAILS

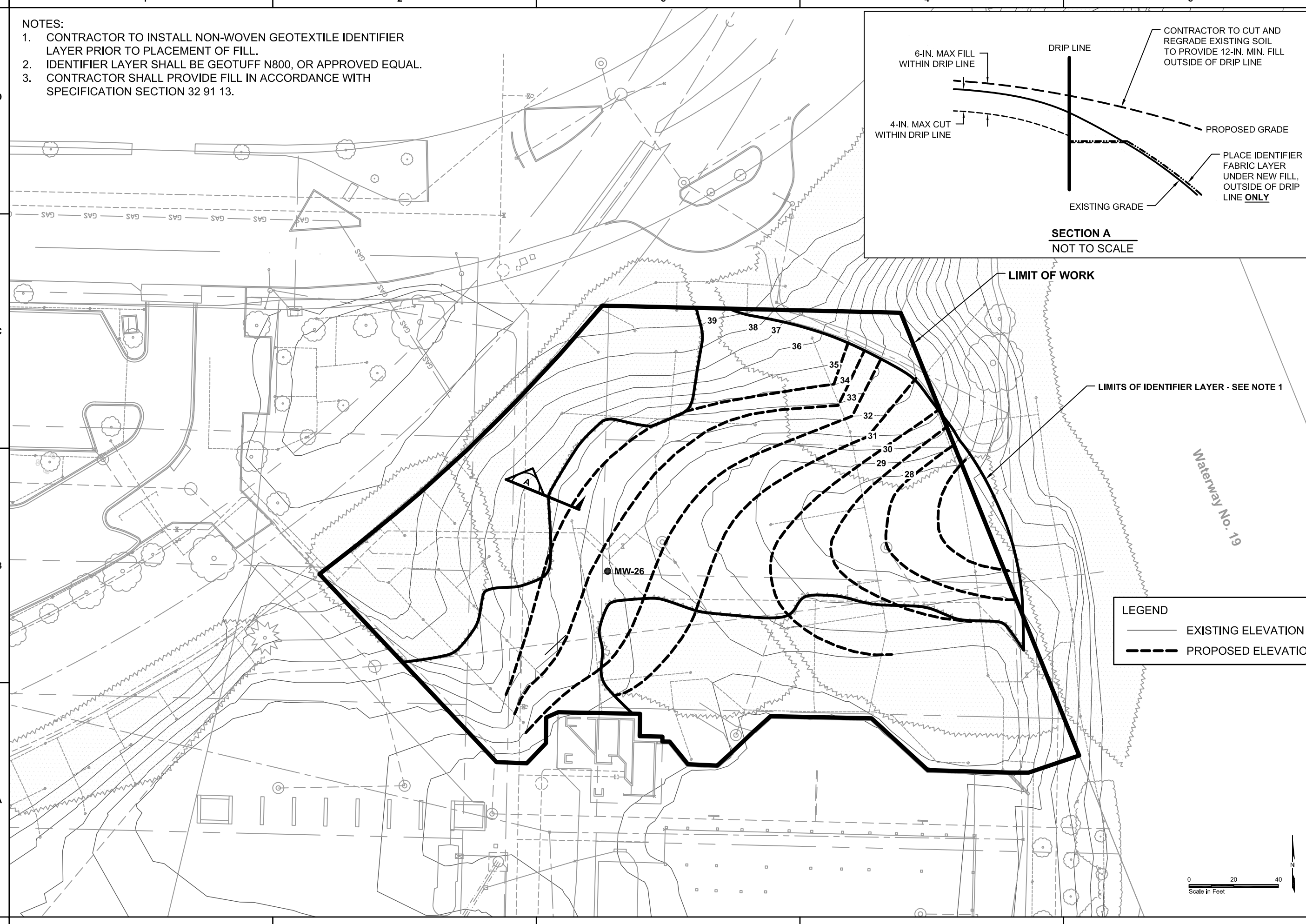
Drawing Reference Number:  
**C-1.1**  
Sheet 5 of 10

NOTES:

1. CONTRACTOR TO INSTALL NON-WOVEN GEOTEXTILE IDENTIFIER LAYER PRIOR TO PLACEMENT OF FILL.
2. IDENTIFIER LAYER SHALL BE GEOTUFF N800, OR APPROVED EQUAL.
3. CONTRACTOR SHALL PROVIDE FILL IN ACCORDANCE WITH SPECIFICATION SECTION 32 91 13.



D  
C  
B  
A



**LEGEND**

	EXISTING ELEVATION
	PROPOSED ELEVATION

HART CROWSER	
Mark	Description
Appr.	Date

Designed by: KR/CP	Date: 08/29/12	Rev: 0
Drawn by: EAL	Job Number: 17800-13	
Checked by: KR/CP		
Reviewed by: MIE		
Submitted by: HART CROWSER, INC.	File name: 17800-13.dwg	Plot scale: SEE DRAWING

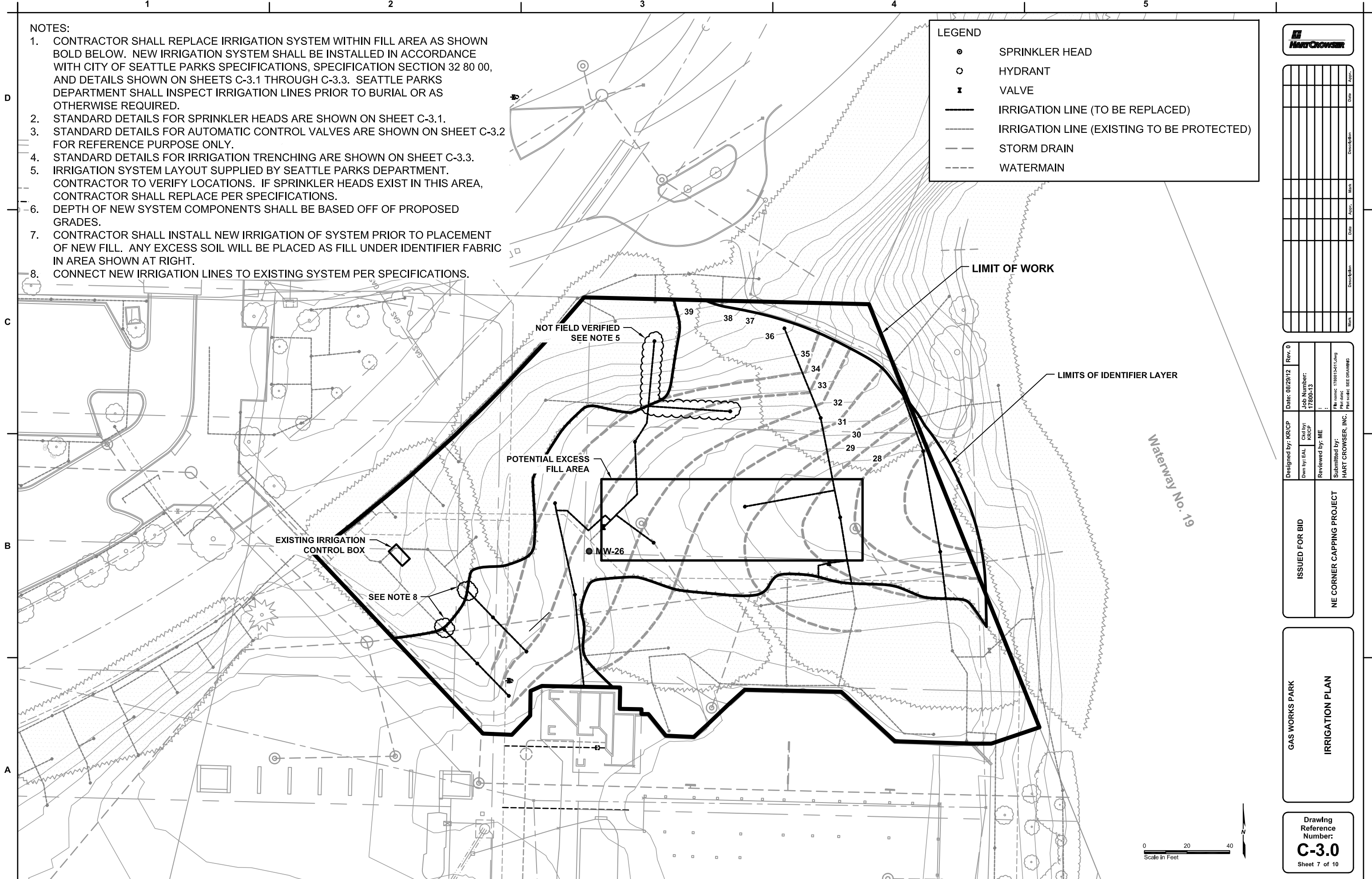
ISSUED FOR BID
NE CORNER CAPPING PROJECT

GAS WORKS PARK	GRADING PLAN
----------------	--------------

Drawing Reference Number:	<b>C-2.0</b>
Sheet	6 of 10

- NOTES:
- CONTRACTOR SHALL REPLACE IRRIGATION SYSTEM WITHIN FILL AREA AS SHOWN BOLD BELOW. NEW IRRIGATION SYSTEM SHALL BE INSTALLED IN ACCORDANCE WITH CITY OF SEATTLE PARKS SPECIFICATIONS, SPECIFICATION SECTION 32 80 00, AND DETAILS SHOWN ON SHEETS C-3.1 THROUGH C-3.3. SEATTLE PARKS DEPARTMENT SHALL INSPECT IRRIGATION LINES PRIOR TO BURIAL OR AS OTHERWISE REQUIRED.
  - STANDARD DETAILS FOR SPRINKLER HEADS ARE SHOWN ON SHEET C-3.1.
  - STANDARD DETAILS FOR AUTOMATIC CONTROL VALVES ARE SHOWN ON SHEET C-3.2 FOR REFERENCE PURPOSE ONLY.
  - STANDARD DETAILS FOR IRRIGATION TRENCHING ARE SHOWN ON SHEET C-3.3.
  - IRRIGATION SYSTEM LAYOUT SUPPLIED BY SEATTLE PARKS DEPARTMENT. CONTRACTOR TO VERIFY LOCATIONS. IF SPRINKLER HEADS EXIST IN THIS AREA, CONTRACTOR SHALL REPLACE PER SPECIFICATIONS.
  - DEPTH OF NEW SYSTEM COMPONENTS SHALL BE BASED OFF OF PROPOSED GRADES.
  - CONTRACTOR SHALL INSTALL NEW IRRIGATION OF SYSTEM PRIOR TO PLACEMENT OF NEW FILL. ANY EXCESS SOIL WILL BE PLACED AS FILL UNDER IDENTIFIER FABRIC IN AREA SHOWN AT RIGHT.
  - CONNECT NEW IRRIGATION LINES TO EXISTING SYSTEM PER SPECIFICATIONS.

LEGEND	
●	SPRINKLER HEAD
○	HYDRANT
✕	VALVE
<b>—</b>	IRRIGATION LINE (TO BE REPLACED)
---	IRRIGATION LINE (EXISTING TO BE PROTECTED)
- - -	STORM DRAIN
- - - -	WATERMAIN



Mark	Description	Date	Appr.

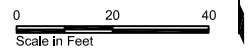
Designed by: KR/CP	Date: 08/29/12	Rev: 0
Drawn by: EAL	Job Number: 17800-13	
Checked by: KR/CP		
Reviewed by: MIE		
Submitted by: HART CROWSER, INC.	File name: 17800-13-11.dwg	
	Plot date: SEE DRAWING	
	Plot user: SEE DRAWING	

ISSUED FOR BID  
NE CORNER CAPPING PROJECT

GAS WORKS PARK  
IRRIGATION PLAN

Drawing Reference Number:  
**C-3.0**  
Sheet 7 of 10

Waterway No. 19



1

2

3

4

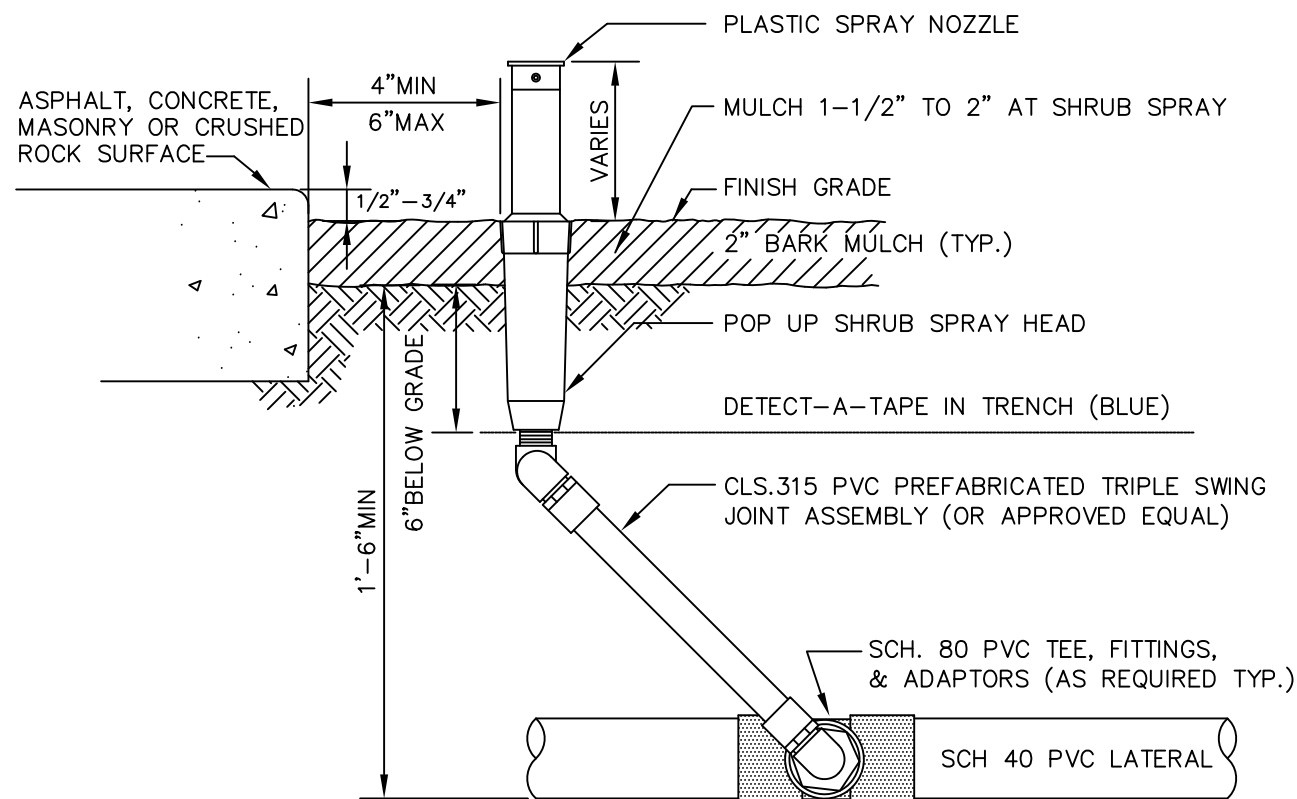
5

D

C

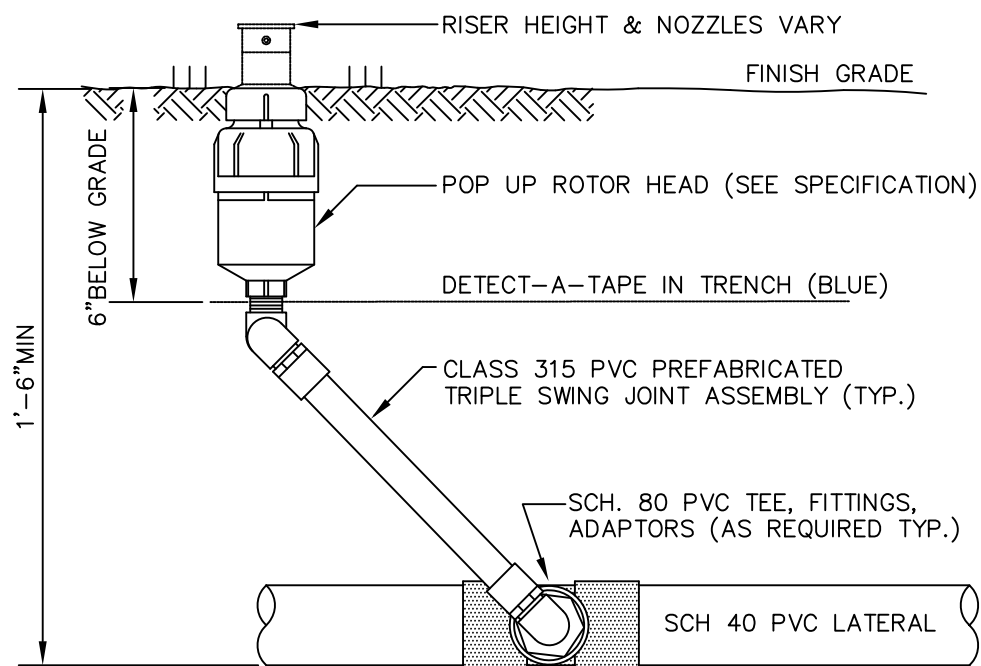
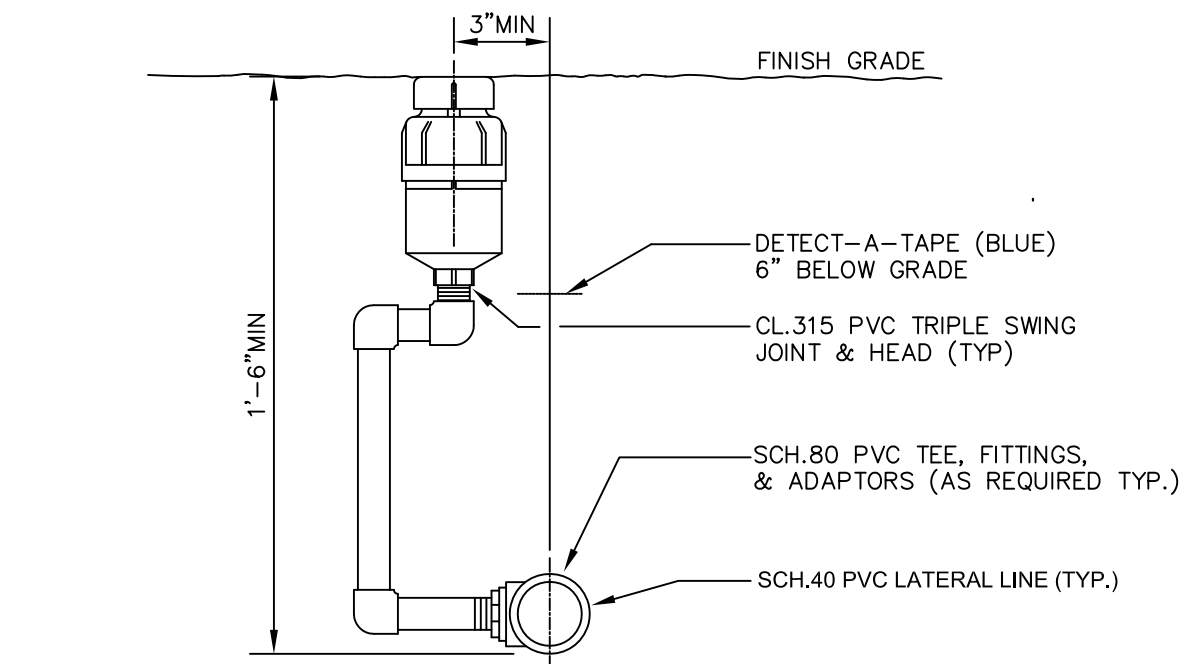
B

A



**NOTE:**  
USE TEFLON TAPE ON ALL  
THREADED FITTINGS

**POP-UP SPRAY HEAD DETAIL**  
NOT TO SCALE



**NOTE:**  
USE TEFLON TAPE ON ALL  
THREADED FITTINGS

**POP-UP ROTOR HEAD DETAIL**  
NOT TO SCALE



Date	Description	Mark	Appr.

Date: 08/29/12	Rev: 0
Desig. by: KR/CP	Check by: KR/CP
Drawn by: EAL	Reviewed by: MIE
Job Number: 17800-13	Submitted by: HART CROWSER, INC.
File name: 17800-13.dwg	Plot date: SEE DRAWING
Plot user: SEE DRAWING	

ISSUED FOR BID  
NE CORNER CAPPING PROJECT

GAS WORKS PARK  
STANDARD IRRIGATION DETAILS

Drawing Reference Number:  
**C-3.1**  
Sheet 8 of 10



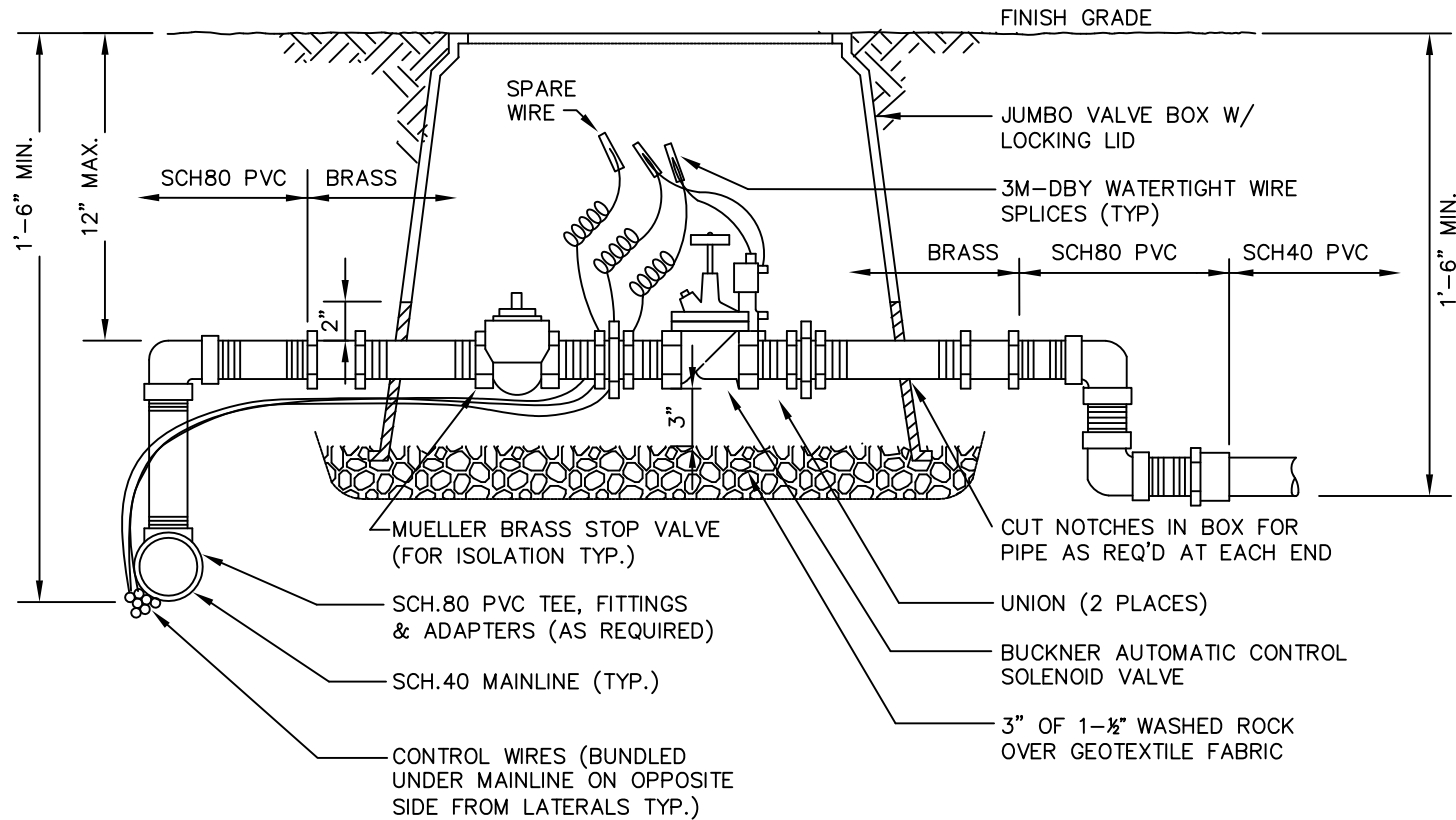
1 2 3 4 5

D

C

B

A



**NOTE:** CUT "U" SHAPED NOTCHES IN BOTH SIDES OF VALVE BOX THAT ALLOW 2" MIN. CLEARANCE FROM TOP OF PIPE TO TOP OF CUT-OUT. USE TEFLON TAPE ON ALL THREADED FITTINGS.

SHOWN AS REFERENCE ONLY. MODIFICATION OF EXISTING CONTROLS NOT ANTICIPATED

**AUTOMATIC CONTROL VALVE DETAIL**  
**(FOR PVC MAINLINE)**  
 NOT TO SCALE



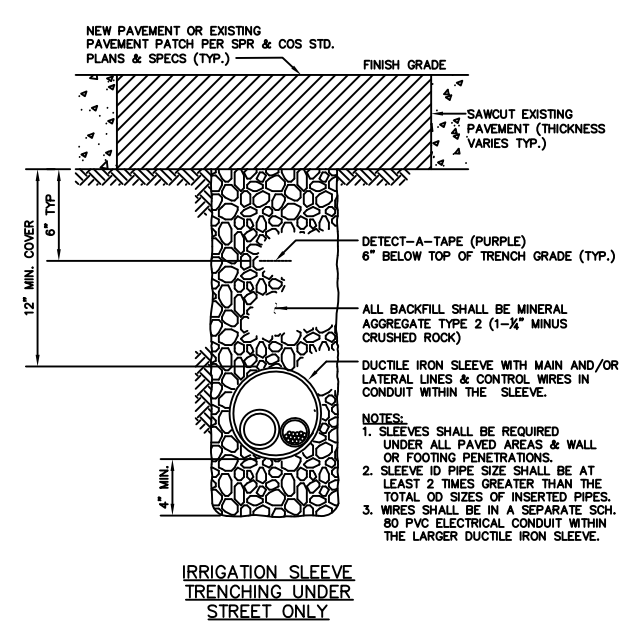
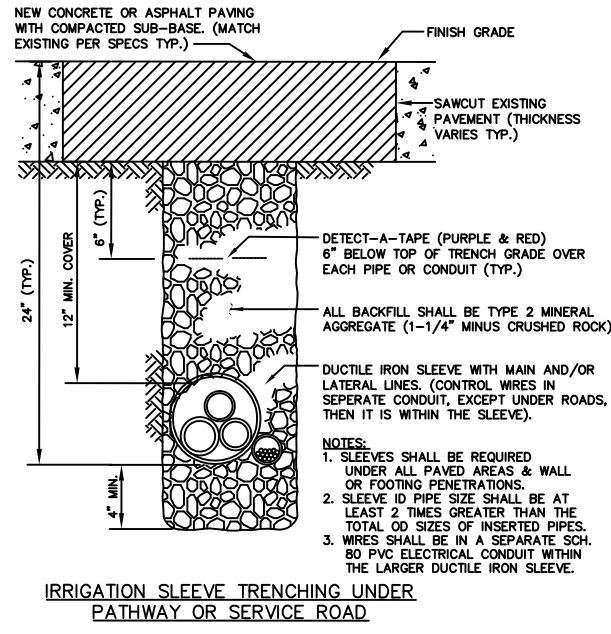
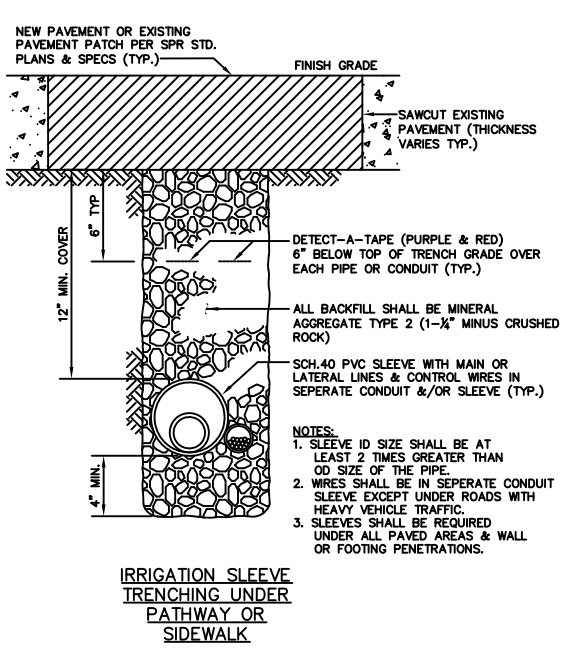
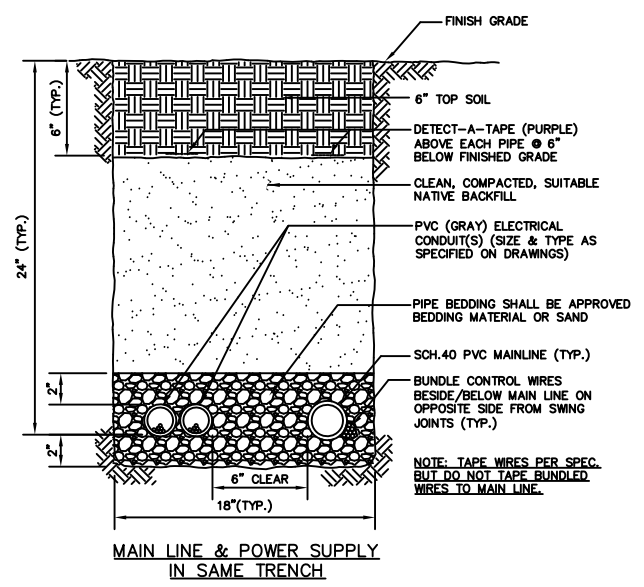
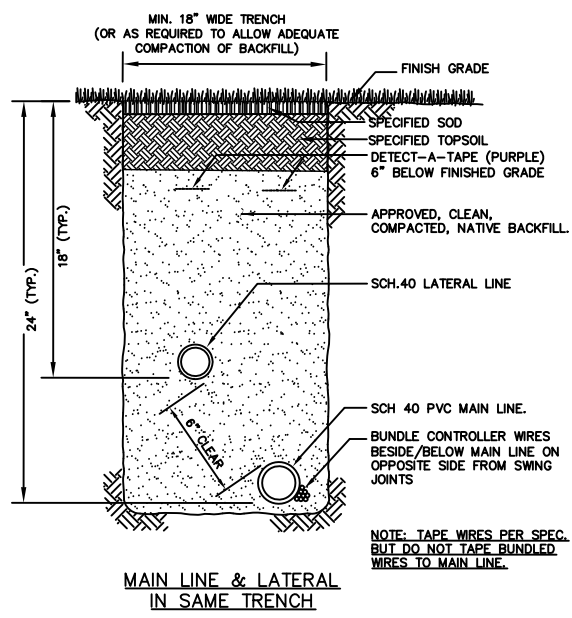
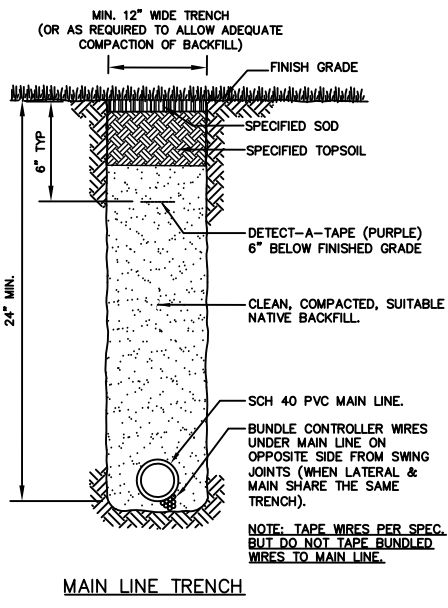
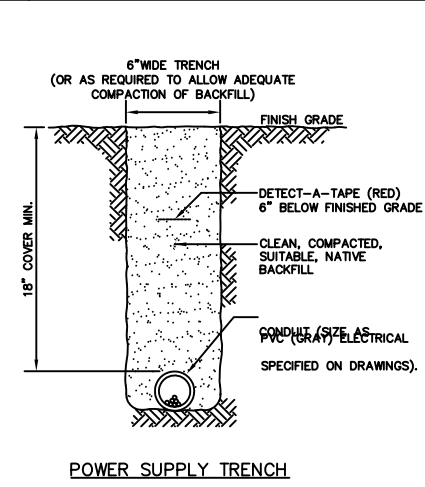
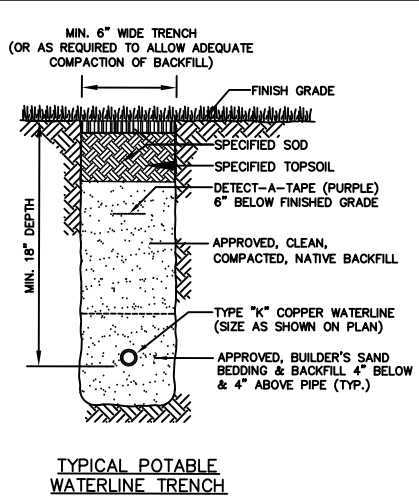
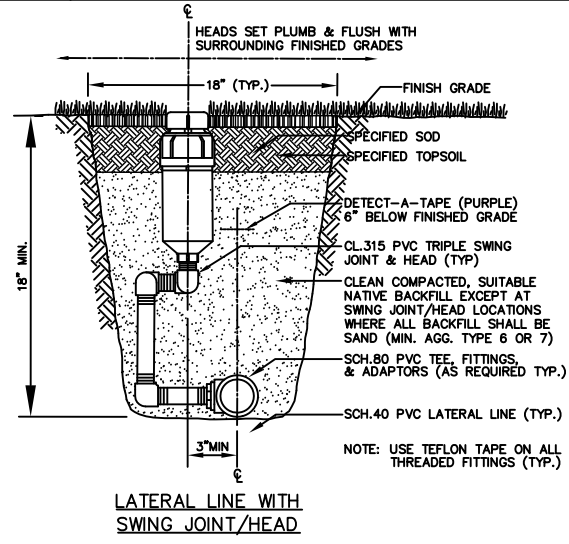
Date	Description	Mark	Appr.

Date: 08/29/12	Rev: 0
Designed by: KR/CP	Checked by: KR/CP
Drawn by: EAL	Reviewed by: MIE
Submittal by: HART CROWSER, INC.	Submitted by: HART CROWSER, INC.
Job Number: 17800-13	File Name: 17800-13.dwg
	Plot Date: SEE DRAWING

ISSUED FOR BID
NE CORNER CAPPING PROJECT

GAS WORKS PARK
STANDARD IRRIGATION DETAILS

Drawing Reference Number: <b>C-3.2</b>
Sheet 9 of 10



Date	Appr.	Mark	Description

Designed by: KRC/CP	Date: 08/29/12	Rev. 0
Drawn by: EAL	Job Number: 17800-13	
Checked by: KRC/CP		
Reviewed by: MIE		
Submitted by: HART CROWSER, INC.	File name: 1780013-01.dwg	
	Plot date:	
	Plot scale: SEE DRAWING	

ISSUED FOR BID

NE CORNER CAPPING PROJECT

GAS WORKS PARK

STANDARD IRRIGATION TRENCH DETAILS

Drawing Reference Number: **C-3.3**

Sheet 10 of 10