

Everett Smelter Cleanup – 2018 Updates



Current view of former facility location

CONTACTS & INFORMATION

Cleanup website:

[http://ecology.wa.gov/
Everett Smelter](http://ecology.wa.gov/EverettSmelter)

Information Hotline:

(425) 446-1024

Contact information

Sandra Matthews,
Project Manager
(425) 649-7206
Sandra.Matthews@ecy.wa.gov

Special accommodations

To request ADA accommodation for disabilities, or printed materials in a format for the visually impaired, call Ecology at (425) 649-7000 or visit [http://www.ecology.wa.gov/
accessibility.html](http://www.ecology.wa.gov/accessibility.html)

Persons with impaired hearing may call Washington Relay Service at 711.

Persons with speech disability may call TTY at (877) 833-6341.

Cleanup Site ID #4298
Facility Site ID #2744

Lowlands cleanup will affect traffic this summer

The Everett Smelter Cleanup site is divided into two parts, the Uplands-western side mostly residential; and Lowlands-eastern side mostly industrial, along the Snohomish River. The first phase of Lowlands cleanup is planned to start in summer 2018.

Highly contaminated material is buried under the intersection of East Marine View Drive and the northbound ramps to SR 529. We must remove this material because it is polluting groundwater that travels into the Snohomish River.

The project will require traffic revision in this important intersection. The work will be completed in two phases, lasting about 3-4 months total. (See Construction Details on page 2.) We will post updates on our website and in the neighborhood.

The following routes will be open throughout the project:

- Access to SR 529 from southbound East Marine View Drive
- Access to Riverside Business Park
- Pedestrian access to the sidewalk east of East Marine View Drive

We also completed a groundwater study and are working on the design for the cleanup for the area north of Riverside Road and east of Riverside Drive.

Parks cleanup begins after Labor Day

Cleanup activities at Wiggums Hollow Park will begin in early September 2018, after Labor Day. Cleanup will be completed in early 2019.

Ecology found soil arsenic levels above state cleanup levels in the three parks located within the Everett Smelter Cleanup Site boundary:

- American Legion Memorial Park
- Wiggums Hollow Park
- Viola Oursler Overlook

American Legion Memorial Park cleanup was completed in 2016. The state legislature gave Ecology funding to clean up the other two city parks. Viola Oursler Overlook is also scheduled to be cleaned up in 2018-19.

Construction details:

Start: July 2018

Expected Duration: About 3 months

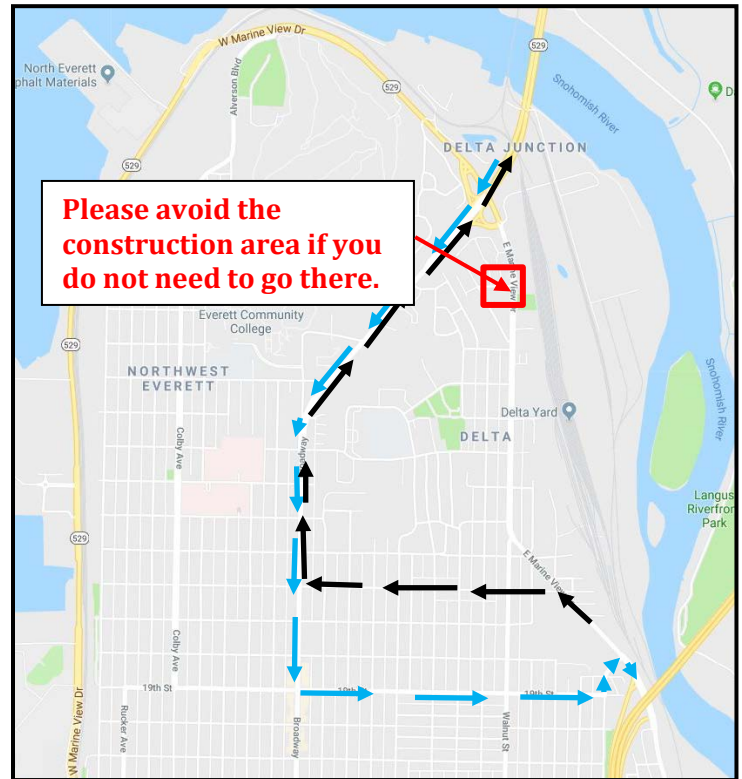
Phase 1: 6-8 weeks

Phase 2: 6-8 weeks

Working hours: 7am – 4pm, Monday – Friday

Detours:

- Use 19th Street and Broadway to bypass the intersection going south.
- Use 16th Street and Broadway to bypass the intersection going north.



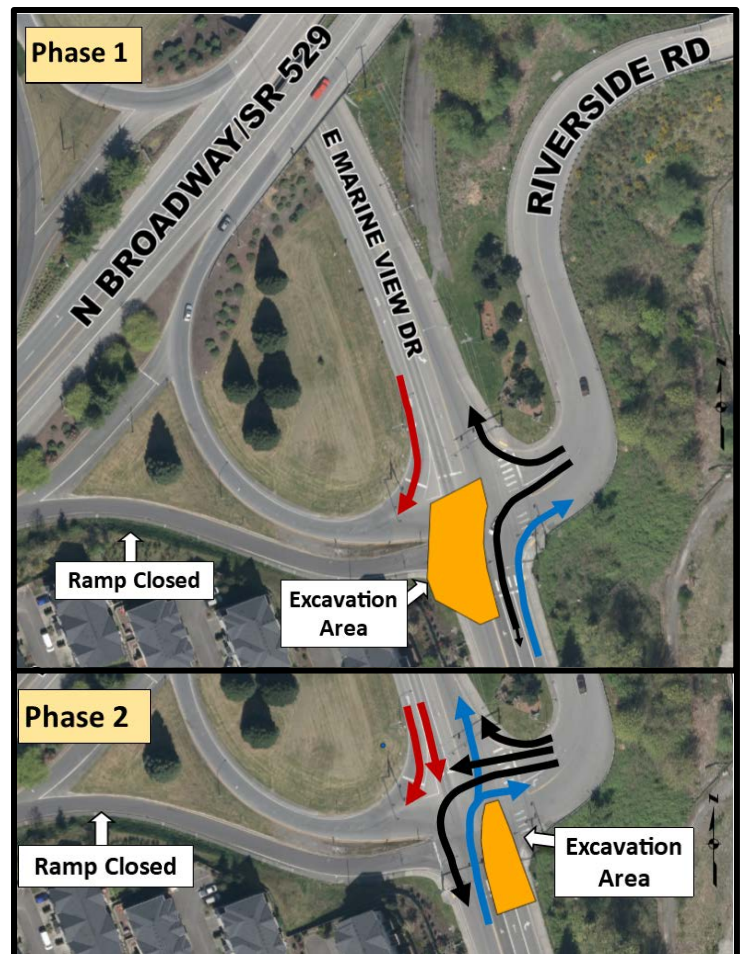
Traffic revisions in the construction area:

During Phase 1:

- No through traffic on East Marine View Drive.
- No exit from SR 529 North to East Marine View Drive.
- The only access to SR 529 North will be from southbound East Marine View Drive.
- The only entry to Riverside Business Park will be from northbound East Marine View Drive.
- Exit from the Riverside Business Park will be allowed only to the north or south.

During Phase 2:

- Northbound and southbound through traffic on East Marine View Drive will be open.
- No exit from SR 529 North to East Marine View Drive.
- Access to SR 529 North will be open from Riverside Drive and southbound East Marine View Drive.
- The only entry to Riverside Business Park will be from northbound East Marine View Drive.
- Exit from Riverside Business Park will be allowed in all directions.



Residential cleanup continues

We completed the cleanup of 11 properties this winter.

This summer, we will begin working with about 20 property owners to clean up their properties. We are working outward from the former smelter facility. The next group will be on the north side of North Broadway, west of the former facility.

Preparation for cleanup takes about a year. The cleanup work on these properties will likely begin in the spring or summer of 2019.

We sampled 76 properties in 2017

In 2017 we sampled residential properties west of Alvenson Boulevard and along East Marine View Drive between 12th and 14th Streets. All property owners who returned our access agreements received free soil sampling.

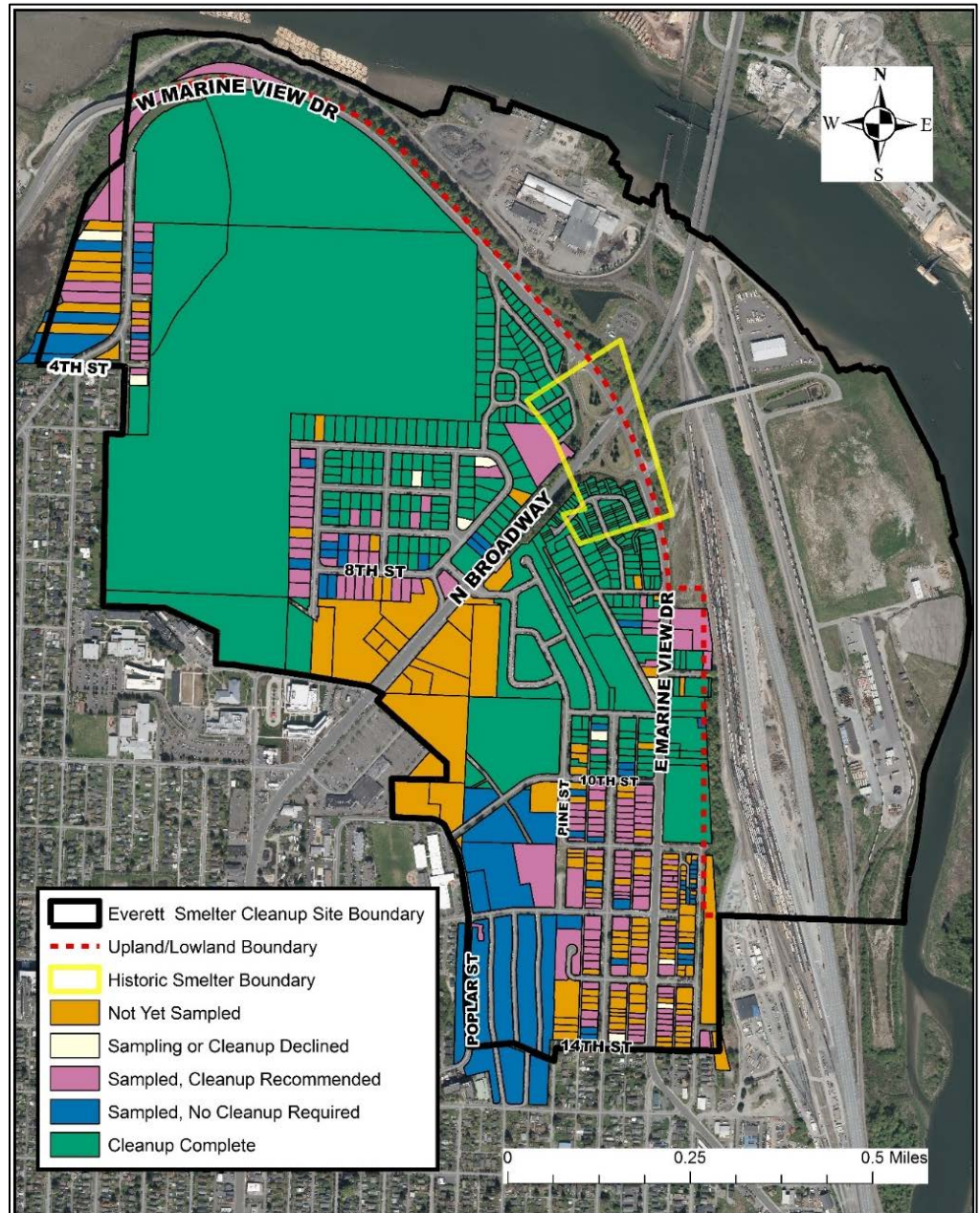
We are offering free soil sampling to all remaining properties in 2018

This year we are offering soil sampling to property owners in the cleanup area who haven't yet responded to our previous offers. We'll begin sampling in summer 2018 and we expect to continue through fall.

**Questions about sampling?
Call our hotline at (425) 446-1024.**

We are happy to answer any questions you have, such as:

- Has my property been sampled?
- What are the results of sampling for my property?
- When will my property be sampled?



**Everett Smelter Uplands Cleanup Progress
March 2018**

Practice healthy habits to protect your family from contaminated soil!

- Wear gloves for yard work
- Wash your hands after playing or working outside
- Leave dirty shoes at the door
- Keep pets clean
- Damp dust and mop often
- Garden in raised beds



Toxics Cleanup Program
3190 160th Ave SE
Bellevue, WA 98008

Everett Smelter Cleanup – 2018 Updates



Summer construction information inside!

Información sobre la limpieza ambiental del Everett Smelter: Si le gustaría obtener este documento en español, favor de comunicarse con Gretchen Newman al 360-407-6097 o preguntas@ecy.wa.gov.

Thông tin về công tác làm sạch môi trường Everett Smelter: Nếu quý vị muốn nhận tài liệu này bằng tiếng Việt hoặc cần thêm thông tin, xin liên hệ ông Liêm Nguyễn: 360-407-6955, điện thư: Lngu461@ecy.wa.gov

Special accommodations

To request materials in a format for the visually impaired, visit <https://ecology.wa.gov/accessibility>, call Ecology at 425-649-7000, Relay Service 711, or TTY 877-833-6341.