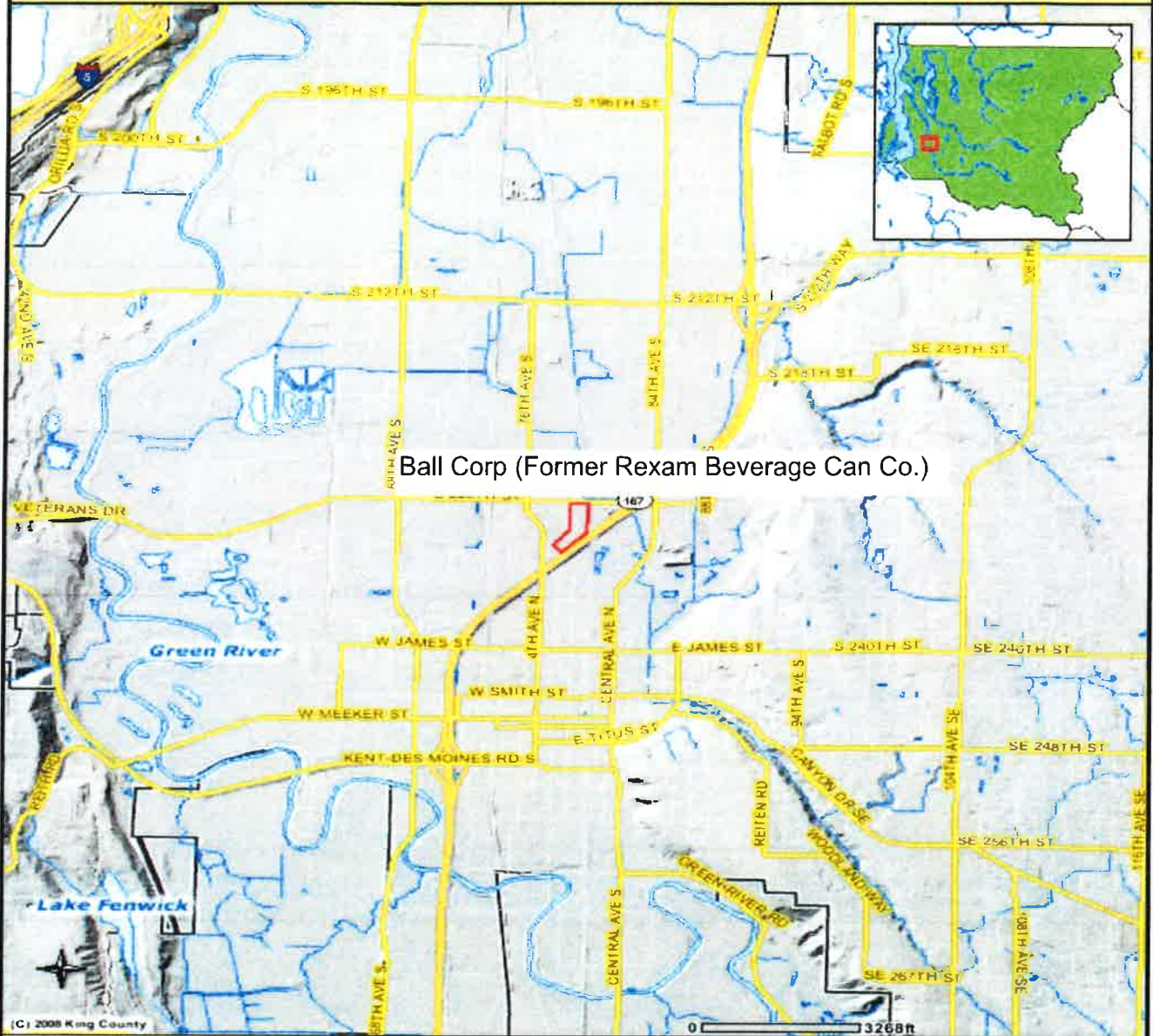




FIGURES

Property Location Map



Ball Corp (Former Rexam Beverage Can Co.)

Legend

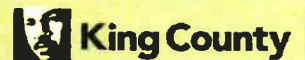
- County Boundary
- Highways
- King County Water Resource Inventory Areas
- Streets
- Highway
- Arterials
- (cont)
- Local
- Groundwater Management Areas
- Lakes and Large Rivers
- Streams
- Incorporated Area
- Shaded Relief

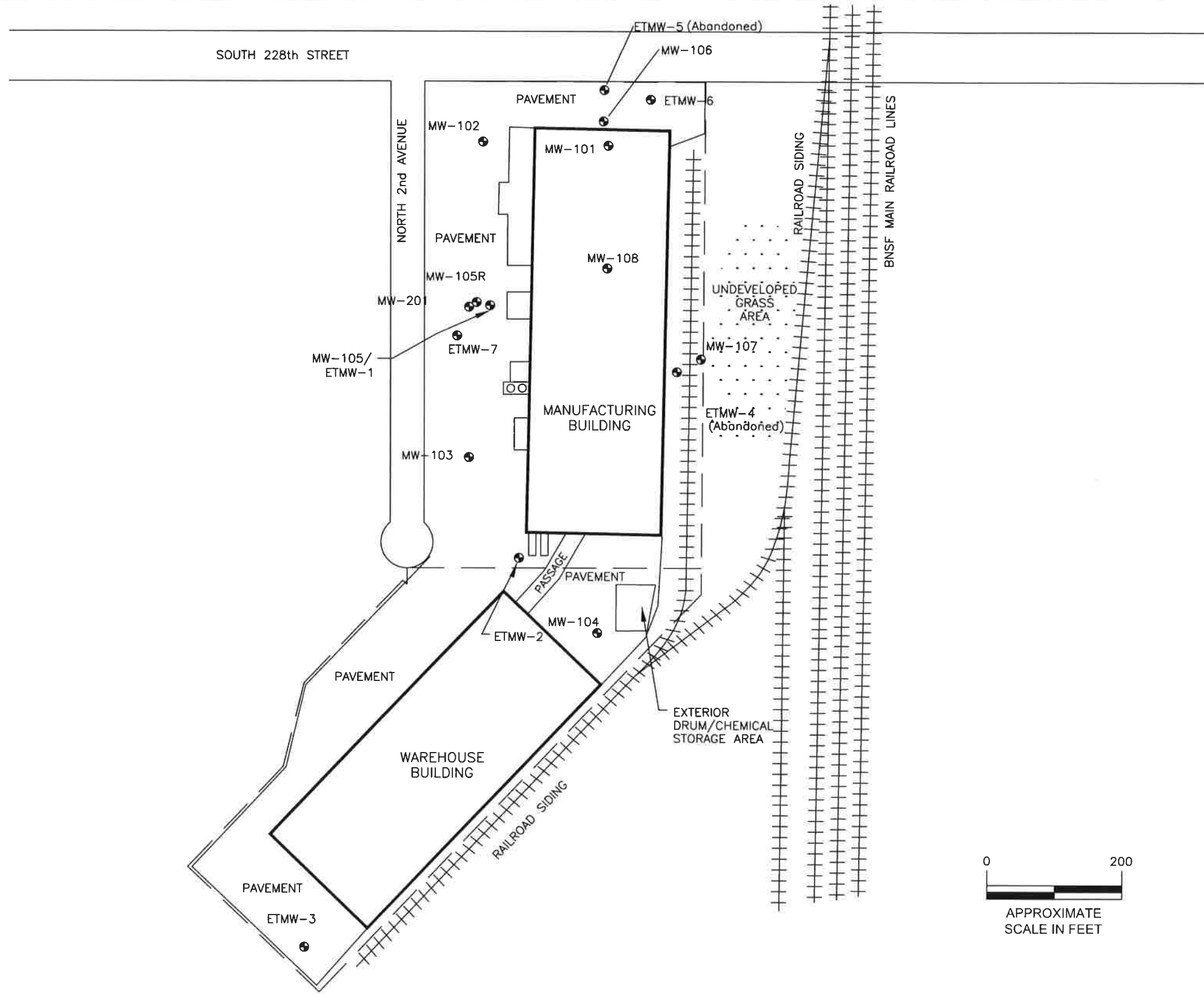
FIGURE 1

COMMENTS: Source: iMAP, retrieved 1/25/15

The information included on this map has been compiled by King County staff from a variety of sources and is subject to change without notice. King County makes no representations or warranties, express or implied, as to accuracy, completeness, timeliness, or rights to the use of such information. This document is not intended for use as a survey product. King County shall not be liable for any general, special, indirect, incidental, or consequential damages including, but not limited to, lost revenues or lost profits resulting from the use or misuse of the information contained on this map. Any sale of this map or information on this map is prohibited except by written permission of King County.

Date: 1/25/2015 Source: King County iMAP - Groundwater Program (<http://www.metrokc.gov/GIS/iMAP>)





NOTES:

Monitoring wells ETMW-1, ETMW-4, and ETMW-5 abandoned
 Monitoring wells ETMW-6 and MW-105 could not be located after construction
 MW-105R is replacement for MW-105

LEGEND:

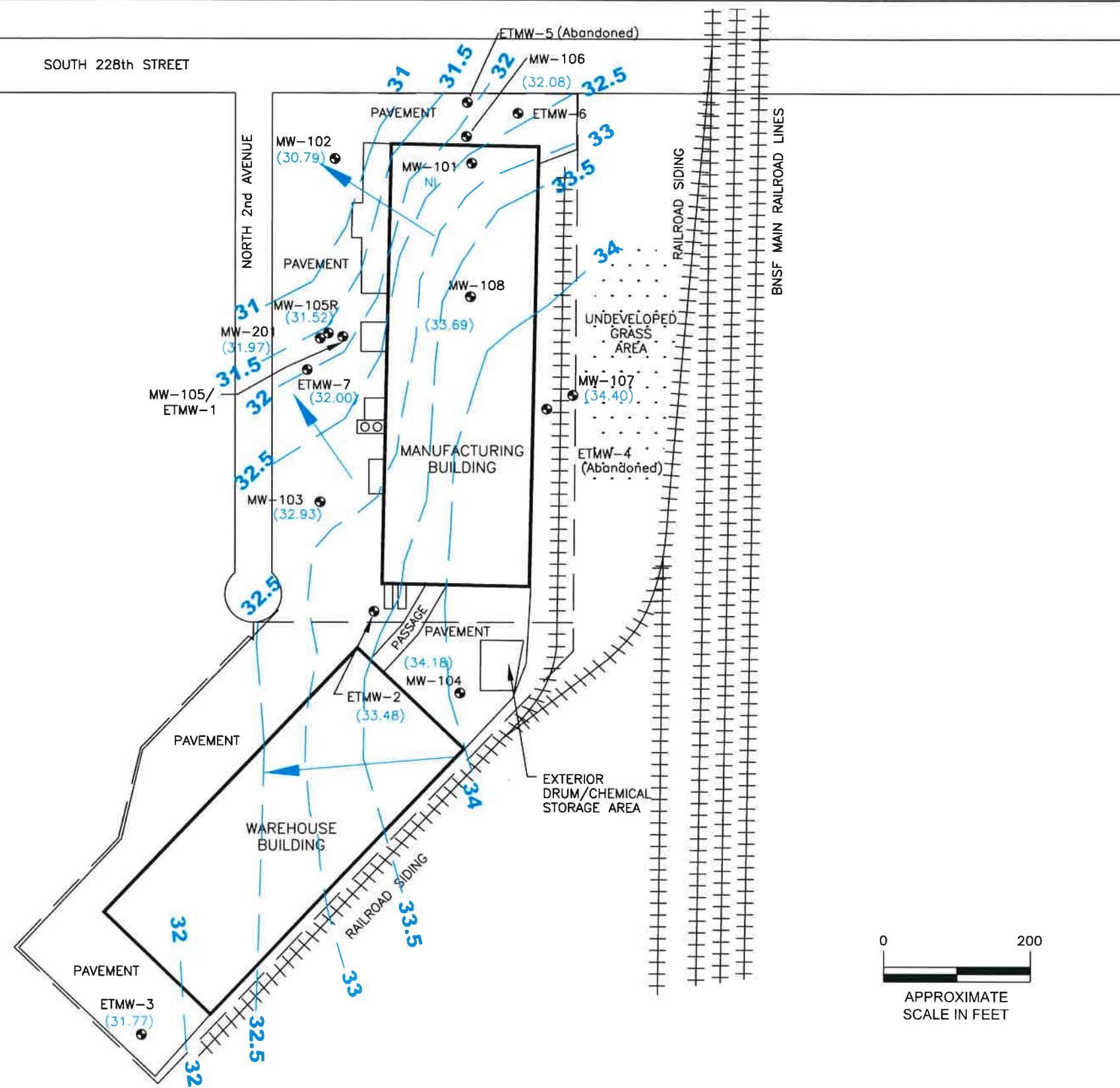
- = APPROXIMATE PROPERTY LINE
- ⊕ = GROUNDWATER MONITORING WELL
- MW = MONITORING WELL INSTALLED BY ENVISION
- ETMW = MONITORING WELL INSTALLED BY EARTHTECH

Envision Environmental, Inc.
 11 Sleepy Hollow Court, Allentown, NJ 08501
 Phone: 609-208-1885 Fax: 609-208-1889

BALL CORP
 (FMR. REXAM BEVERAGE CAN CO.)
 1220 NORTH 2nd AVENUE
 KENT, WASHINGTON 98032
 SITE PLAN SHOWING
 MONITORING WELL LOCATIONS

Revisions:

Project No. 302.REX
Date: 06/29/18
Scale: As Shown
Drawing No. FIGURE 2



LEGEND:

- = APPROXIMATE PROPERTY LINE
- ⊙ = GROUNDWATER MONITORING WELL
- MW = MONITORING WELL INSTALLED BY ENVISION
- ETMW = MONITORING WELL INSTALLED BY EARTHTECH
- ⊕ = PROPOSED MONITORING WELL

Monitoring well ETMW-1 abandoned
 Monitoring well MW-105 covered by new construction,
 replaced by MW-105R

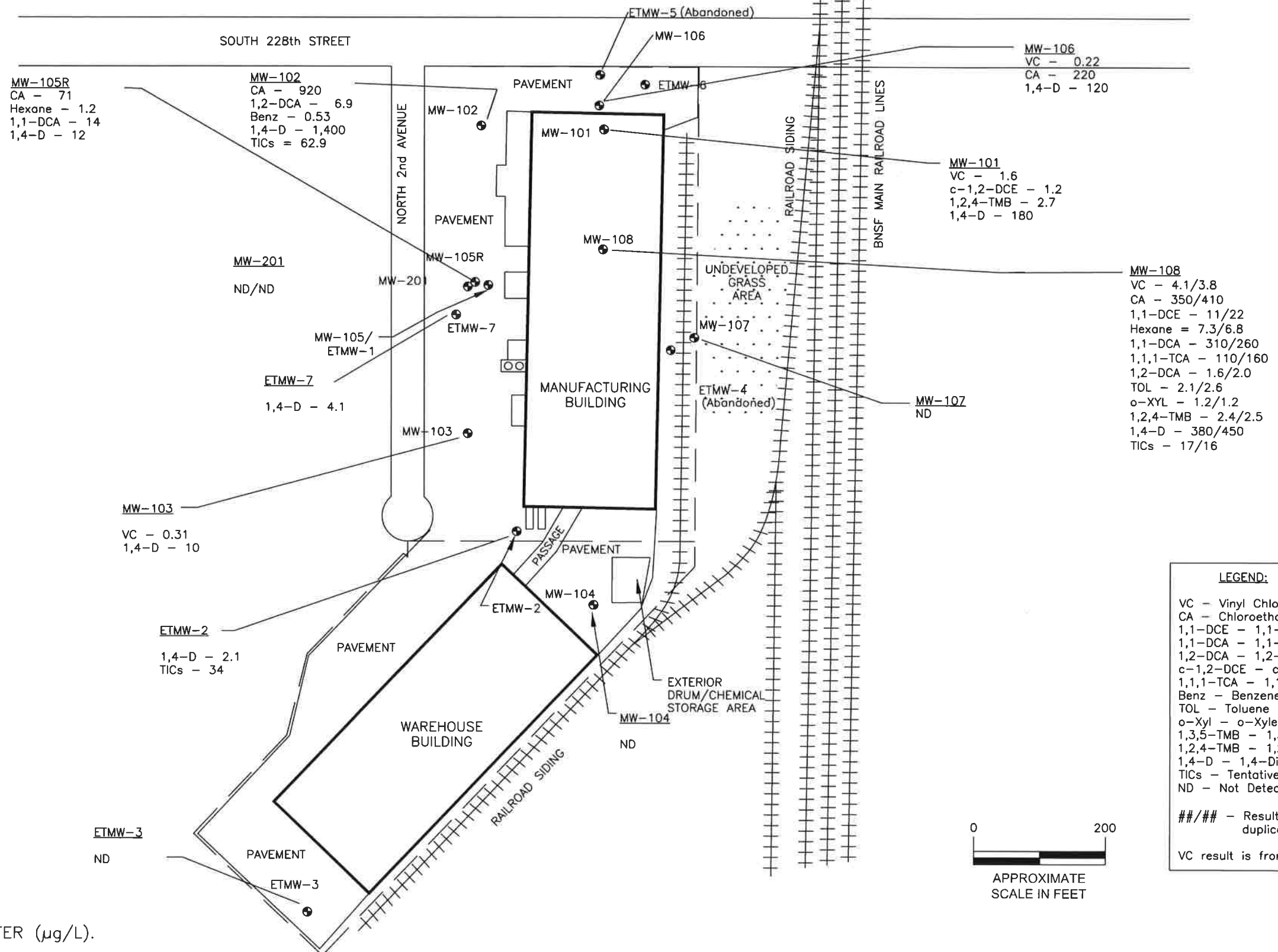
MW-201 not included in contour map
 NI = Well contained free product, not
 included in contour map

Envision Environmental, Inc.
 11 Sleepy Hollow Court, Allentown, NJ 08501
 Phone: 609-208-1885 Fax: 609-208-1889

BALL CORP
 (FMR. REXAM BEVERAGE CAN CO.)
 1220 NORTH 2nd AVENUE
 KENT, WASHINGTON 98032
 GROUNDWATER CONTOUR MAP
 FEBRUARY 2018

Revisions:

Project No. 302.REX
Date: 06/29/18
Scale: As Shown
Drawing No. FIGURE 3



LEGEND:

VC - Vinyl Chloride
 CA - Chloroethane
 1,1-DCE - 1,1-Dichloroethene
 1,1-DCA - 1,1-Dichloroethane
 1,2-DCA - 1,2-Dichloroethane
 c-1,2-DCE - cis-1,2-Dichloroethene
 1,1,1-TCA - 1,1,1-Trichloroethane
 Benz - Benzene
 TOL - Toluene
 o-Xyl - o-Xylene
 1,3,5-TMB - 1,3,5-Trimethylbenzene
 1,2,4-TMB - 1,2,4-Trimethylbenzene
 1,4-D - 1,4-Dioxane
 TICs - Tentatively Identified Compounds
 ND - Not Detected

##/## - Results of sample and duplicate

VC result is from preserved sample

NOTES:

- CONCENTRATIONS IN MICROGRAMS/LITER ($\mu\text{g/L}$).

LEGEND:

— = APPROXIMATE PROPERTY LINE

⊕ = GROUNDWATER MONITORING WELL

MW = MONITORING WELL INSTALLED BY ENVISION

ETMW = MONITORING WELL INSTALLED BY EARTHTECH

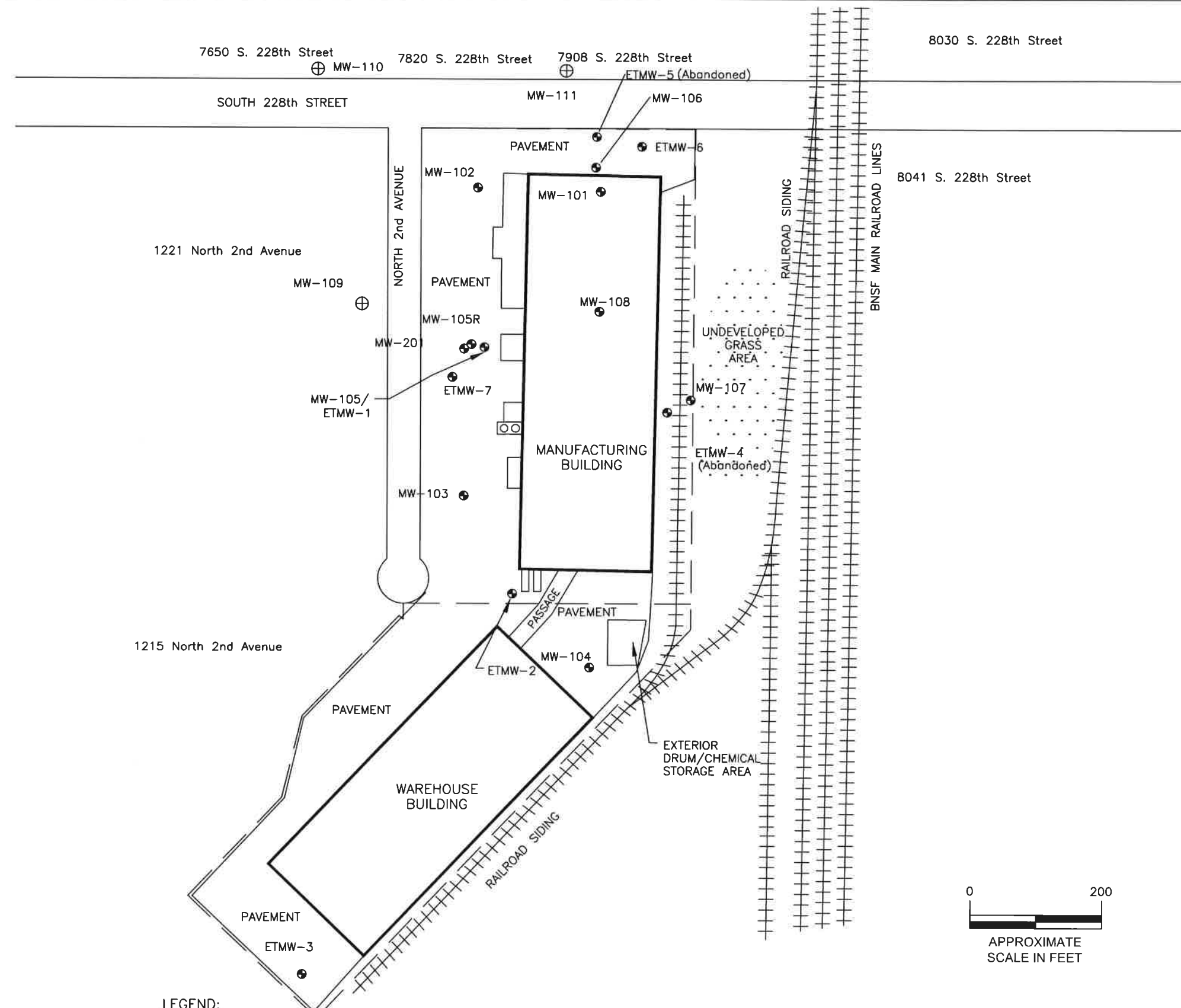
Envision Environmental, Inc.
 11 Sleepy Hollow Court, Allentown, NJ 08501
 Phone: 609-208-1885 Fax: 609-208-1889

BALL CORP
 (FMR. REXAM BEVERAGE CAN CO.)
 1220 NORTH 2nd AVENUE
 KENT, WASHINGTON 98032
 VOC CONCENTRATIONS IN GROUNDWATER
 FEBRUARY 2018

Revisions:

Project No. 302.REX
Date: 06/29/18
Scale: As Shown
Drawing No. FIGURE 4





NOTES:

Monitoring wells ETMW-1, ETMW-4, and ETMW-5 abandoned
 Monitoring wells ETMW-6 and MW-105 could not be located after construction
 MW-105R is replacement for MW-105

LEGEND:

- = APPROXIMATE PROPERTY LINE
- ⊙ = GROUNDWATER MONITORING WELL
- MW = MONITORING WELL INSTALLED BY ENVISION
- ETMW = MONITORING WELL INSTALLED BY EARTHTECH
- ⊕ = PROPOSED MONITORING WELL

Envision Environmental, Inc.
 11 Sleepy Hollow Court, Allentown, NJ 08501
 Phone: 609-208-1885 Fax: 609-208-1889

BALL CORP
 (FMR. REXAM BEVERAGE CAN CO.)
 1220 NORTH 2nd AVENUE
 KENT, WASHINGTON 98032
 SITE PLAN SHOWING PROPOSED
 OFFSITE MONITORING WELL LOCATIONS

Revisions:

Project No. 302.REX
Date: 06/29/18
Scale: As Shown
Drawing No. FIGURE 5