

October 5, 2017
Cardno 031227CXJS.L18

Ms. Jennifer Sedlachek
ExxonMobil Environmental Services Company
4096 Piedmont Avenue #194
Oakland, California 94611

Cardno

801 Second Avenue
Suite 700
Seattle, WA 98104
USA

SUBJECT Third Quarter 2017 Site Status Report
Former Exxon Fueling Facilities
Grant County International Airport
7810 Andrews Street Northeast
Moses Lake, Washington

Phone +1 206 269 0104
Toll-free +1 877 470 4334
Fax +1 206 269 0098

www.cardno.com

Ms. Sedlachek:

At the request of ExxonMobil Environmental Services Company (EMES), on behalf of Exxon Mobil Corporation, Cardno operates and maintains a NAPL recovery system at the Former Fueling Facilities, located at Grant County International Airport, in Moses Lake, Washington. On September 7 and September 8, 2017, Cardno personnel visited the subject site to gauge NAPL thickness and to confirm that the NAPL recovery system was operational.

SITE DESCRIPTION

Grant County International Airport (Airport) is located immediately north of the City of Moses Lake in Grant County, Washington (Plate 1). The site lies at an elevation of approximately 1,170 feet above msl. Former Exxon-leased facilities include fueling hydrants located in the southern portion of the Airport, two aboveground storage tanks (Storage Tanks #38 and #24, with capacities of 54,390 barrels [bbl] and 27,426 bbl, respectively) located south of the Airport, and associated product piping runs; all of which have historically been used to dispense jet fuel. A generalized site plan for Pumphouse #1 is shown on Plate 2.

SITE STATUS SUMMARY

- > On September 7 and September 8, 2017, Cardno personnel visited the site for quarterly NAPL gauging and operation and maintenance.
- > The NAPL recovery pumps were removed from monitoring wells MW22, MW25, PH1-9301, and PH1-9402 for inspection.
- > NAPL thickness was gauged at monitoring wells MW15, MW20 through MW26, 91-AW6, 91-BW2, PH1-9301, PH1-9303, and PH1-9402 (Table 1).
- > Maximum NAPL thickness of 1.65 feet was measured in well PH1-9402.
- > The NAPL recovery system was not restarted for monitoring wells MW22, MW25, and PH1-9301 to allow for NAPL recovery and to prevent total depletion of the NAPL lens.
- > Based on the presence of measurable NAPL in monitoring well PH1-9402, the NAPL recovery system was restarted at a pumping of interval of 4 minutes per day.

October 5, 2017
Cardno 031227CXJS.L18 Former Fueling Facilities Moses Lake, Washington

RECOMMENDATION

Cardno recommends to continue monitoring and gauging of NAPL thickness at the subject site and the continued operation of the NAPL recovery system.

LIMITATIONS

For any documents cited that were not generated by Cardno, the data taken from those documents is used "as is" and is assumed to be accurate. Cardno does not guarantee the accuracy of this data and makes no warranties for the referenced work performed nor the inferences or conclusions stated in these documents. This report and the works performed have been undertaken in good faith, with due diligence and with the expertise, experience capability and specialized knowledge necessary to perform the Work in a good and workmanlike manner and within all accepted standards pertaining to providers of environmental services, in Washington at the time of investigation. No soil engineering or geotechnical references are implied or should be inferred. The evaluation of the geologic conditions at the site for this investigation is made from a limited number of data points. Subsurface conditions may vary away from these data points.

Cardno appreciated the opportunity to provide assistance on this project. Please contact Michael J. Miller, Cardno Project Manager for this site, at 206 767 2360, with any questions.

Sincerely,



Chester Chiao
Staff Scientist
Cardno
Direct Line +1 206 269 0104
Email: chester.chiao@cardno.com



Michael J. Miller
Project Manager
Cardno
Direct Line +1 206 767 2360
Email: michael.miller@cardno.com

ENCLOSURES

Plate 1 Site Location Map
Plate 2 Generalized Site Plan (Pumphouse #1)

Table 1 Operations and Maintenance Summary

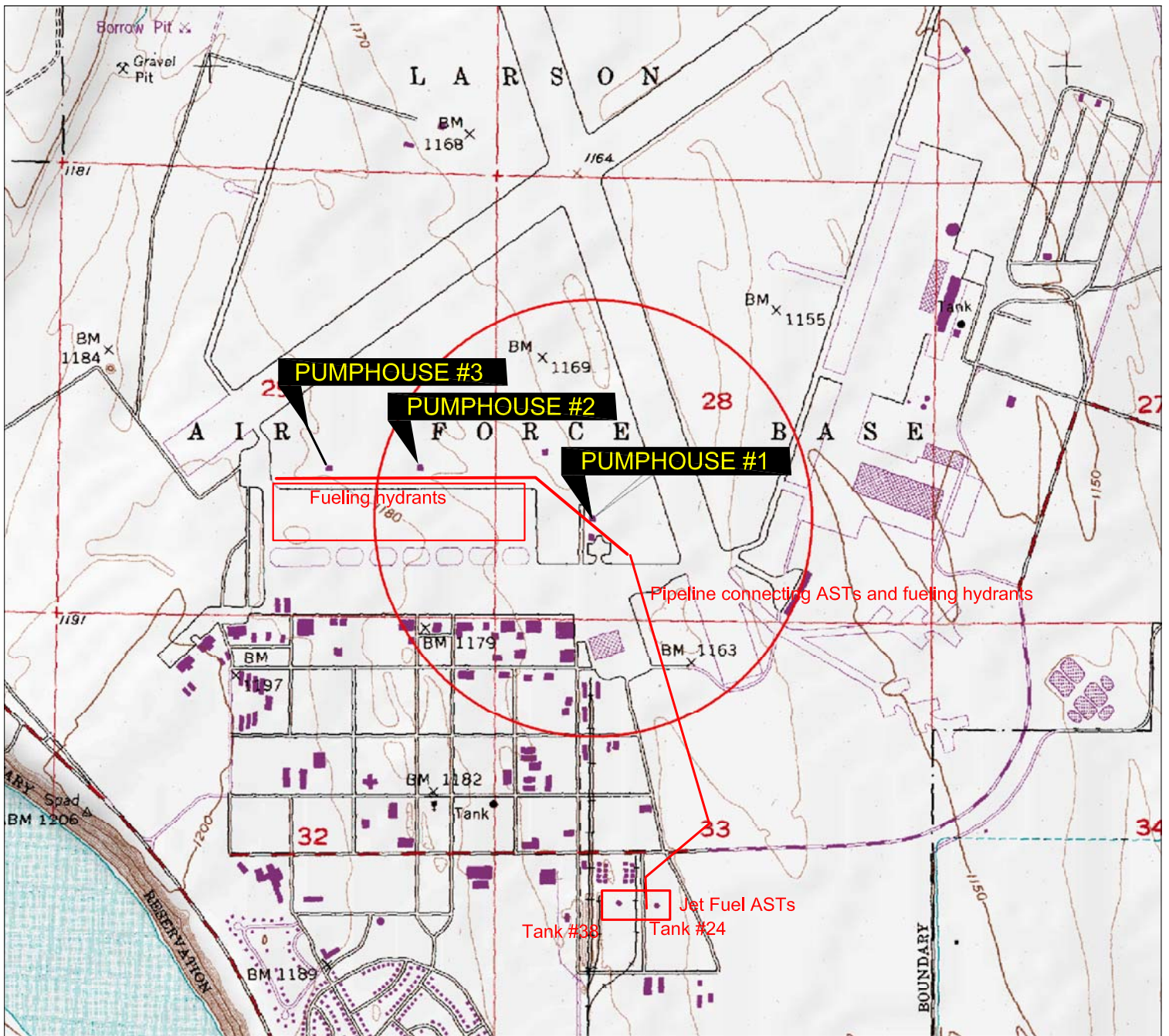
cc: w/ enclosures
 Mr. Larry Godden, Air America Fuel and Service, Inc.
 Mr. Jeffrey Bishop, Grant County International Airport
 LUST Coordinator, Washington State Department of Ecology

October 5, 2017

Cardno 031227CXJS.L18 Former Fueling Facilities Moses Lake, Washington

ACRONYM LIST

µg/L	Micrograms per liter	NAPL	Non-aqueous phase liquid
µs	Microsiemens	NEPA	National Environmental Policy Act
1,2-DCA	1,2-dichloroethane	NGVD	National Geodetic Vertical Datum
acfm	Actual cubic feet per minute	NPDES	National Pollutant Discharge Elimination System
AS	Air sparge	O&M	Operations and Maintenance
bgs	Below ground surface	ORP	Oxidation-reduction potential
BTEX	Benzene, toluene, ethylbenzene, and total xylenes	OSHA	Occupational Safety and Health Administration
CEQA	California Environmental Quality Act	OVA	Organic vapor analyzer
cfm	Cubic feet per minute	P&ID	Process & Instrumentation Diagram
COC	Chain of Custody	PAH	Polycyclic aromatic hydrocarbon
CPT	Cone Penetration (Penetrometer) Test	PCB	Polychlorinated biphenyl
DIPE	Di-isopropyl ether	PCE	Tetrachloroethene or perchloroethylene
DO	Dissolved oxygen	PID	Photo-ionization detector
DOT	Department of Transportation	PLC	Programmable logic control
DPE	Dual-phase extraction	POTW	Publicly owned treatment works
DTW	Depth to water	ppmv	Parts per million by volume
EDB	1,2-dibromoethane	PQL	Practical quantitation limit
EDC	1,2-dichloroethane	psi	Pounds per square inch
EPA	Environmental Protection Agency	PVC	Polyvinyl chloride
ESL	Environmental screening level	QA/QC	Quality assurance/quality control
ETBE	Ethyl tertiary butyl ether	RBSL	Risk-based screening levels
FID	Flame-ionization detector	RCRA	Resource Conservation and Recovery Act
fpm	Feet per minute	RL	Reporting limit
GAC	Granular activated carbon	scfm	Standard cubic feet per minute
gpd	Gallons per day	SSTL	Site-specific target level
gpm	Gallons per minute	STLC	Soluble threshold limit concentration
GWPTS	Groundwater pump and treat system	SVE	Soil vapor extraction
HVOC	Halogenated volatile organic compound	SVOC	Semivolatile organic compound
J	Estimated value between MDL and PQL (RL)	TAME	Tertiary amyl methyl ether
LEL	Lower explosive limit	TBA	Tertiary butyl alcohol
LPC	Liquid-phase carbon	TCE	Trichloroethene
LRP	Liquid-ring pump	TOC	Top of well casing elevation; datum is msl
LUFT	Leaking underground fuel tank	TOG	Total oil and grease
LUST	Leaking underground storage tank	TPHd	Total hydrocarbons as diesel
MCL	Maximum contaminant level	TPHg	Total hydrocarbons as gasoline
MDL	Method detection limit	TPHmo	Total hydrocarbons as motor oil
mg/kg	Milligrams per kilogram	TPHs	Total hydrocarbons as stoddard solvent
mg/L	Milligrams per liter	TRPH	Total recoverable hydrocarbons
mg/m ³	Milligrams per cubic meter	UCL	Upper confidence level
MPE	Multi-phase extraction	USCS	Unified Soil Classification System
MRL	Method reporting limit	USGS	United States Geologic Survey
msl	Mean sea level	UST	Underground storage tank
MTBE	Methyl tertiary butyl ether	VCP	Voluntary Cleanup Program
MTCA	Model Toxics Control Act	VOC	Volatile organic compound
NAI	Natural attenuation indicators	VPC	Vapor-phase carbon



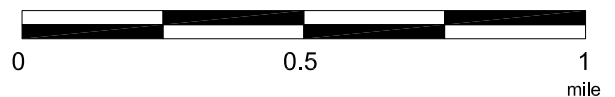
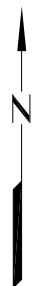
ME
 e. 3-D TopoQuads ©. Data copyright of content owner.
 com

FN 0312270001

EXPLANATION

○ 1/2-mile Radius Circle From Pumphouse #1

APPROXIMATE SCALE



SOURCE:
 Modified from a map
 provided by
 DeLorme 3-D TopoQuads



SITE LOCATION MAP

GRANT COUNTY AIRPORT
 FORMER FUELING FACILITIES
 7810 Andrews Street Northeast
 Moses Lake, Washington

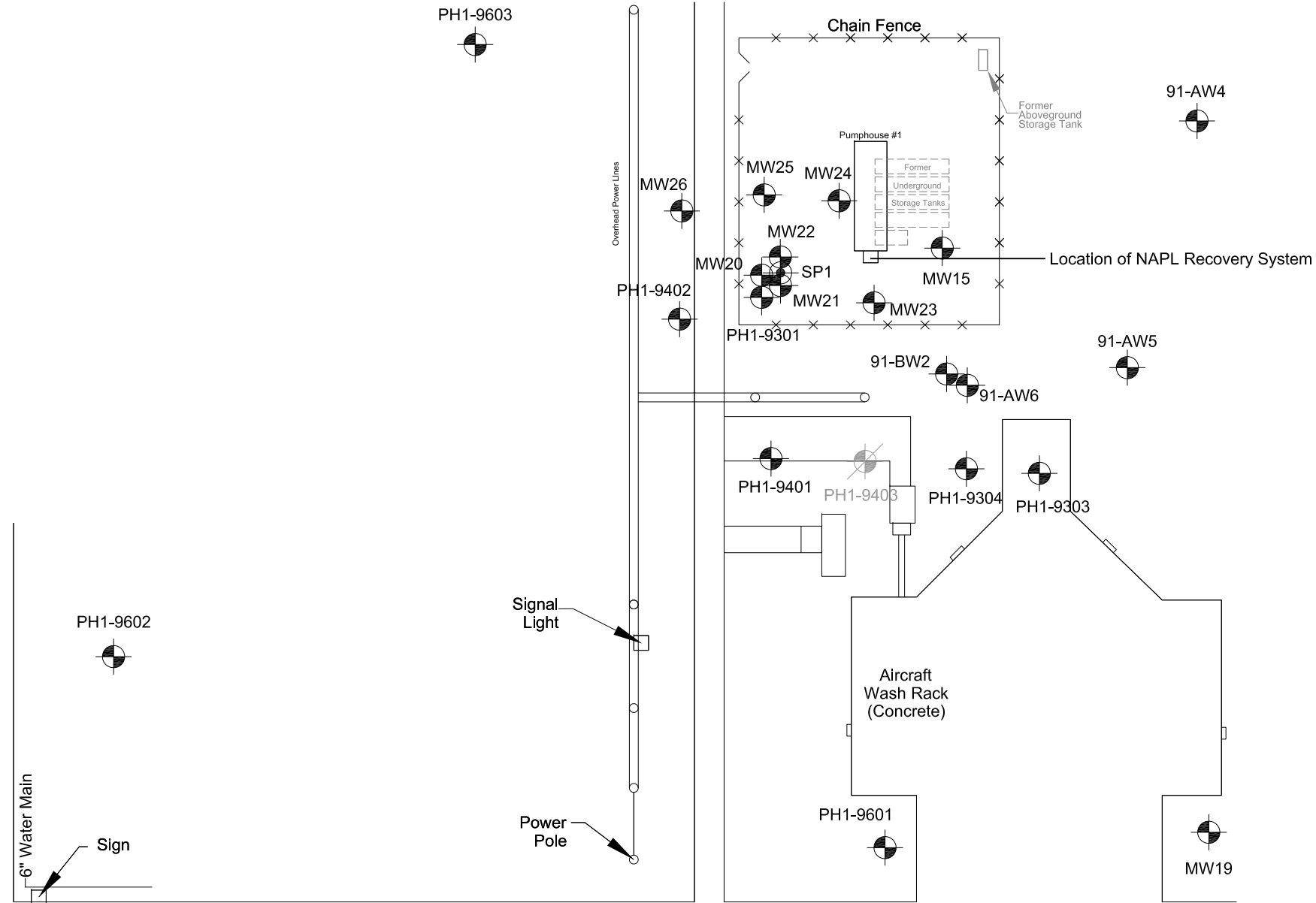
PROJECT NO.

031227

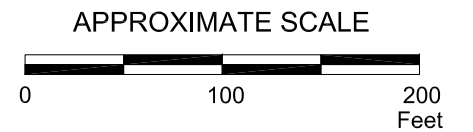
PLATE

1

NAG: 01/12/12



SOURCE:
Modified from a map provided by
Secor International Inc.



FN 0312270002



**GENERALIZED SITE PLAN
(PUMPHOUSE #1)**
GRANT COUNTY AIRPORT
FORMER FUELING FACILITIES
7810 Andrews Street Northeast
Moses Lake, Washington

EXPLANATION

- PH1-9603 Groundwater Monitoring Well
- PH1-9403 Destroyed Groundwater Monitoring Well

PROJECT NO.

031227

PLATE

2

EJB: 07/01/13

**TABLE 1
OPERATIONS AND MAINTENANCE SUMMARY**

Grant County Airport
Former Fueling Facilities
7810 Andrews Street Northeast
Moses Lake, Washington
Page 1 of 4

Date	NAPL Recovery		Well	DTNAPL (feet bgs)	DTW (feet bgs)	NAPL Thickness (feet)	Adjustement to System			Total Pumping Time (hours)	Comments
	Holding Tank (inches)	Total ^a (gallons)					Pump Depth (feet bgs)	Pumping Duration (min)	Days Between Pumping (day)		
12/02/15	3.5	27.8	MW15	87.90	88.73	0.83	88.32	3	1	1.13	Initial pump depth - 88.62 feet bgs. Initial pumping rate - 3 minutes every 2 days. Pump down on arrival. Adjusted pumping air flow. Pump operational upon departure.
			MW21	91.16	93.31	2.15	92.24	4	1	1.77	Initial pump depth - 92.02 feet bgs. Initial pumping rate - 4 minutes every 2 days. Pump operational upon arrival/departure. Removed snow from exhaust valve.
			MW22	91.28	93.35	2.07	92.32	10	1	4.48	Initial pump depth - 92.01 feet bgs. Initial pumping rate - 10 minutes every 2 days. Pump operational upon arrival/departure. Removed snow from exhaust valve. Unwound NAPL float pulley.
			MW25	91.24	92.92	1.68	92.08	5	1	2.22	Initial pump depth - 91.25 feet bgs. Initial pumping rate - 5 minutes every 2 days. Pump operational upon arrival/departure.
			MW26	90.79	92.02	1.23	91.41	6	1	2.47	Initial pump depth - 91.70 feet bgs. Initial pumping rate - 6 minutes every 2 days. Pump operational upon arrival/departure. Noticed crimping in the exhaust and supply line from the former position of the compression fitting.
03/01/16	13.5	108.7	MW15	87.19	87.22	0.03	87.21	0	0	5.65	Pump operational upon arrival. Pump was shut down on 03/01/16 due to minimal NAPL thickness.
			MW21	90.39	92.30	1.91	91.35	4	1	7.70	Pump operational upon arrival/departure. Removed snow from exhaust valve.
			MW22	90.57	92.17	1.60	91.37	10	1	19.32	Pump operational upon arrival/departure. Cleaned float pulley.
			MW25	90.62	91.47	0.85	91.05	3	1	9.65	Pump operational upon arrival/departure. Cleaned float pulley.
			MW26	90.21	91.20	0.99	90.71	4	1	11.40	Pump was down upon arrival. Adjusted pumping air flow. Pump operational upon departure.
04/28/16	18.3	147.3	MW15	NM	NM	NM	NM	0	0	5.65	Pump down upon arrival/departure.
			MW21	NM	NM	NM	NM	4	1	11.52	Pump was down upon arrival. Adjusted pumping air flow. Pump operational upon departure.
			MW22	NM	NM	NM	NM	10	1	28.87	Pump operational upon arrival/departure.
			MW25	NM	NM	NM	NM	3	1	12.53	Pump operational upon arrival/departure.
			MW26	NM	NM	NM	NM	4	1	15.22	Pump operational upon arrival/departure.

**TABLE 1
OPERATIONS AND MAINTENANCE SUMMARY**

Grant County Airport
Former Fueling Facilities
7810 Andrews Street Northeast
Moses Lake, Washington
Page 2 of 4

Date	NAPL Recovery		Well	DTNAPL (feet bgs)	DTW (feet bgs)	NAPL Thickness (feet)	Adjustement to System			Total Pumping Time (hours)	Comments
	Holding Tank (inches)	Total ^a (gallons)					Pump Depth (feet bgs)	Pumping Duration (min)	Days Between Pumping (day)		
07/27/16	4.25	34.2	MW15	85.77	85.81	0.04	87.21	0	0	05:39	Pump down upon arrival/departure.
			MW21	89.20	90.08	0.88	91.35	4	1	17:30	Pump operational upon arrival. Shut down on 07/27/16 to allow for NAPL recovery.
			MW22	89.44	89.58	0.14	91.37	10	1	43:57	Pump operational upon arrival. Shut down on 07/27/16 to allow for NAPL recovery.
			MW25	--	89.40	0.00	91.05	3	1	17:00	Pump operational upon arrival. Shut down on 07/27/16 to allow for NAPL recovery.
			MW26	88.99	89.08	0.09	90.71	4	1	21:12	Pump operational upon arrival. Shut down on 07/27/16 to allow for NAPL recovery.
04/06/17	NM	NM	MW15	84.02	84.09	0.07	NA	NA	NA	NA	Shut down on 07/27/16 to allow for NAPL recovery.
			MW20	87.80	87.91	0.11	NA	NA	NA	NA	No pump operational.
			MW21	87.48	87.99	0.51	NA	NA	NA	NA	Shut down on 07/27/16 to allow for NAPL recovery.
			MW22	87.69	87.79	0.10	NA	NA	NA	NA	Shut down on 07/27/16 to allow for NAPL recovery.
			MW23	--	87.11	0.00	NA	NA	NA	NA	No pump operational.
			MW24	87.37	88.04	0.67	NA	NA	NA	NA	No pump operational.
			MW25	--	87.57	0.00	NA	NA	NA	NA	Shut down on 07/27/16 to allow for NAPL recovery.
			MW26	87.18	87.20	0.02	NA	NA	NA	NA	Shut down on 07/27/16 to allow for NAPL recovery.
			91-AW6	--	89.78	0.00	NA	NA	NA	NA	No pump operational.
			91-BW2	--	89.34	0.00	NA	NA	NA	NA	No pump operational.
			PH1-9301	86.94	88.18	1.24	NA	NA	NA	NA	No pump operational.
PH1-9303	--	83.76	0.00	NA	NA	NA	NA	No pump operational.			
PH1-9402	86.91	88.55	1.64	NA	NA	NA	NA	No pump operational.			
06/16/17	4.75	38.2	MW15	83.62	83.64	0.02	NA	NA	NA	NA	No pump operational.
			MW20	87.38	87.44	0.06	NA	NA	NA	NA	No pump operational.
			MW21	87.05	87.59	0.54	NA	NA	NA	NA	Moved pump to PH1-9301.
			MW22	87.21	87.41	0.20	NA	NA	NA	NA	No pump operational.
			MW23	--	86.70	0.00	NA	NA	NA	NA	No pump operational.
			MW24	86.95	87.57	0.62	NA	NA	NA	NA	No pump operational.
			MW25	--	87.15	0.00	NA	NA	NA	NA	No pump operational.
			MW26	--	86.73	0.00	NA	NA	NA	NA	Moved pump to PH1-9402.

**TABLE 1
OPERATIONS AND MAINTENANCE SUMMARY**

Grant County Airport
Former Fueling Facilities
7810 Andrews Street Northeast
Moses Lake, Washington
Page 3 of 4

Date	NAPL Recovery		Well	DTNAPL (feet bgs)	DTW (feet bgs)	NAPL Thickness (feet)	Adjustement to System			Total Pumping Time (hours)	Comments	
	Holding Tank (inches)	Total ^a (gallons)					Pump Depth (feet bgs)	Pumping Duration (min)	Days Between Pumping (day)			
06/16/17	4.75	38.2	91-AW6	--	79.35	0.00	NA	NA	NA	NA	No pump operational.	
			91-BW2	--	89.00	0.00	NA	NA	NA	NA	No pump operational.	
			PH1-9301	86.54	88.59	2.05	87.57	4	1	NA	Pump installed. Pump operational upon departure. Pump rate set at 4 minutes per day.	
			PH1-9303	--	83.38	0.00	NA	NA	NA	NA	No pump operational.	
			PH1-9402	86.36	88.55	2.19	87.46	4	1	NA	Pump installed. Pump operational upon departure. Pump rate set at 4 minutes per day.	
09/07/17	4.77	38.4	MW15	83.43	83.44	0.01	NA	NA	NA	NA	No pump operational.	
			MW20	87.22	87.29	0.07	NA	NA	NA	NA	No pump operational.	
			MW21	86.85	87.42	0.57	NA	NA	NA	NA	No pump operational.	
			MW22	87.00	87.33	0.33	NA	NA	NA	NA	No pump operational.	
			MW23	--	86.51	0.00	NA	NA	NA	NA	No pump operational.	
			MW24	86.76	87.38	0.62	NA	NA	NA	NA	No pump operational.	
			MW25	--	86.95	0.00	NA	NA	NA	NA	No pump operational.	
			MW26	--	86.55	0.00	NA	NA	NA	NA	No pump operational.	
			91-AW6	NM	NM	NM	NA	NA	NA	NA	NA	Not measured due to active wasp nest. No pump operational.
			91-BW2	--	88.80	0.00	NA	NA	NA	NA	NA	No pump operational.
			PH1-9301	--	86.52	0.00	NA	NA	NA	NA	NA	No pump operational.
			PH1-9303	--	83.18	0.00	NA	NA	NA	NA	NA	No pump operational.
			PH1-9402	86.25	87.90	1.65	87.08	4	1	NA	NA	Pump operational upon departure. Pump rate set at 4 minutes per day.

**TABLE 1
OPERATIONS AND MAINTENANCE SUMMARY**

Grant County Airport
Former Fueling Facilities
7810 Andrews Street Northeast
Moses Lake, Washington
Page 4 of 4

Date	NAPL Recovery		Well	DTNAPL (feet bgs)	DTW (feet bgs)	NAPL Thickness (feet)	Adjustement to System			Total Pumping Time (hours)	Comments
	Holding Tank (inches)	Total ^a (gallons)					Pump Depth (feet bgs)	Pumping Duration (min)	Days Between Pumping (day)		

EXPLANATION:

ZYTECH Pneumatic NAPL recovery system start on 10/09/15

DTNAPL = Depth to NAPL

DTW = Depth to water in feet below top of casing

NAPL = Non-aqueous phase liquid

feet bgs = feet below ground surface

NM = Not measured

NA = Not applicable

-- = Not detected

a = Total volume calculated using know dimensions of holding tank and measured depth converted to gallons