

SITE HAZARD ASSESSMENT

Worksheet 1

Summary Score Sheet

SITE INFORMATION:

Quiet Cove
 202 O Ave
 Anacortes, Skagit County, WA 98221

Cleanup Site ID: 12482

Facility/Site ID: 20859

Section:	13	Latitude:	48.52047
Township:	35	Longitude:	-122.61457
Range:	1E	Tax/Parcel ID:	P55354, P55358, P55359

Site scored/ranked for the Hazardous Sites List Publication: August 2018

SITE DESCRIPTION:

The Quiet Cove site (Site) is a former bulk fuel facility located in Anacortes, Skagit County, Washington. The 0.8-acre property is located approximately 115 feet from Guemes Channel, and zoned for MS (marine shipping) use.

The Site is comprised of three tax parcels located on O Ave between 2nd and 3rd Street. The area surrounding the Site to the north, west, and east is primarily comprised of additional Port of Anacortes property. Guemes Channel borders the Port property to the north and west of the Site. A Texaco/Reisner bulk fuel distribution facility is located to the southwest of the Site, N Avenue Park is located to the northwest, and a thrift shop and residential properties are located to the south across 3rd Street.

The Site is currently operated as a storage area by Port of Anacortes.

The Site is currently used for storage in support of the activities of the Curtis Wharf International Shipping Terminal. An office and two warehouse buildings are located on the northwest portion of the Site. Buildings, pavement, and compacted gravel cover the Site. Access to the property is controlled by fencing.

During the period of use as a bulk fuel facility, oil tanks were located in the northeast and central portions of the Site. These structures were removed in the late 1970s.

The Puget Sound Initiative was established by the Governor's office in 2007 with the goal of restoring the health of Puget Sound by 2020. A leading source of pollution to Puget Sound is contaminated sites around its shorelines. Ecology's Toxics Cleanup Program has identified contaminated sites within one-half mile of the Sound. This Site is a Puget Sound Initiative site.

SITE BACKGROUND:

A summary of prior operations/tenants at the subject property is presented below.

<u>From</u>	<u>To</u>	<u>Operator/Tenant</u>	<u>Activity</u>
1910	1967	Standard Oil	Bulk fuel storage and distribution; parcel P55354
1967	1977	Standard Oil	Bulk fuel storage and distribution; all three parcels
1977	2013	Thomas and Patricia Stowe	Multiple tenants - marine vessel and RV storage, marine-related sales and services
2013	2018	Port of Anacortes	Current storage and future redevelopment as part of overall Port activities

SITE CONTAMINATION:

SITE HAZARD ASSESSMENT

Worksheet 1

Summary Score Sheet

In 2014 the Quiet Cove site was reported to Washington State Department of Ecology (Ecology) and placed on the Confirmed and Suspected Contaminated Sites List (CSCSL).

The source of contamination on Site is the historic use as a bulk fuel facility. The extent of contamination in soil and groundwater were investigated in 2014 by GeoEngineers. Soil on Site was confirmed to be contaminated above MTCA Method A cleanup levels with petroleum hydrocarbons in the gasoline, diesel, or oil range (TPH-G, -D, or -O), benzene, toluene, ethylbenzene, xylenes, carcinogenic polycyclic aromatic hydrocarbons (cPAHs), chromium, and cadmium at depths of 2 - 6 feet below ground surface (bgs). Contaminated soil is present in both the vadose and saturated zones. Concentrations were highest in soil samples from the central portion of the Site. Groundwater samples indicated contamination with TPH-D above MTCA Method A cleanup levels at all wells on site. At least one well also indicated contamination with TPH-O (MW-2, -3), PAHs (MW-3, -5) and arsenic (MW-5; located upgradient of former fuel storage areas).

Based on currently available Site data, groundwater flows to the northwest, toward Guemes Channel. It is expected that groundwater flows to the downgradient marine sediment and then discharges into surface water. While future Site characterization activities will continue to investigate this pathway, sediment and surface water downgradient of the Site have not yet been sampled to confirm that they have been impacted.

REMEDIATION ACTIVITIES:

No prior remedial activities on the Site have been reported to Ecology. A targeted remedial action was performed relating to contamination from an uncapped pipeline at the adjacent Reisner/Texaco bulk fueling facility. Areas of remediation are included on Site figures below and denoted as "off-property contaminant sources".

CURRENT SITE CONDITIONS:

The closest non-industrial buildings to the Site are located approximately 100 feet to the south, across 3rd St, and include single family residences and the Soroptimist Thrift Shop. Additional Port of Anacortes buildings are located 90 feet north of the Site. Six additional Ecology cleanup sites are located within 1/4 mile of the Site, including one No Further Action site (US Postal Service Anacortes), three Cleanup Started (Trident Seafoods, Anacortes Maintenance, Anacortes Port - Dakota Creek), and one Awaiting Cleanup (Reisner Distributing 2). The closest sensitive environment is the N Ave Park, located on the shoreline of Guemes Channel, 100 feet NW of the Site.

The Site is connected to City of Anacortes utilities (water, sewer, storm water). There are no active drinking water wells within 2 miles on Fidalgo Island. Across the Guemes Channel, however, there are active drinking water wells on Guemes Island within 2 miles of the Site. Guemes Island is a sole source aquifer. Because groundwater on the Site is relatively shallow and likely discharging to surface water and not connected to the Guemes Island aquifer, wells in the Guemes Island aquifer were not considered during scoring.

The approximate depth to groundwater is 5 - 10 feet below ground surface, with groundwater flowing to the northwest. Subsurface soils are sand with varying silt content in both the top fill layer (2-7 feet bgs) and the underlying shoreline deposits (up to 14 feet bgs).

SPECIAL CONSIDERATIONS:

Checked boxes indicate routes applicable for Washington Ranking Method (WARM) scoring

Surface Water

Contaminated groundwater is likely discharging to Guemes Channel surface water.

Air

Volatile chemicals have been detected in the subsurface.

Groundwater

Chemicals have been detected in groundwater on Site.

SITE HAZARD ASSESSMENT

Worksheet 1

Summary Score Sheet

ROUTE SCORES:

Surface Water/ Human Health:	18.0	Surface Water/ Environment:	44.7
Air/ Human Health:	22.2	Air/ Environment:	1.6
Groundwater/ Human Health:	42.5		

Overall Rank: 2

REFERENCES:

- 1 City of Anacortes. Accessed 2018. City of Anacortes Zoning map. <https://www.anacorteswa.gov/DocumentCenter/View/5042>
- 2 ESRI. Accessed 2018. World Annual Evapotranspiration Map. Accessed through <https://www.esri.com/arcgis-blog/products/arcgis-online/mapping/world-average-annual-evapotranspiration-web-map-now-available/>
- 3 GeoEngineers. 2017. Final Remedial Investigation/Feasibility Study Work Plan, Quiet Cove Property, Anacortes, Washington, Ecology Agreed Order No. DE 11346.
- 4 Missouri Census Data Center. Accessed 2018. Circular Area Profiles – Version 10C. <http://mcdc.missouri.edu/websas/caps10c.html>
- 5 NOAA National Centers for Environmental Information. Accessed 2018. Global Summary of the Year 2000 - 2011 – Anacortes and Anacortes 4.9 S stations. Requested from <https://www.ncdc.noaa.gov/cdo-web/>
- 6 NOAA. Accessed 2018. Atlas 2: Precipitation Frequency Estimates. <http://www.nws.noaa.gov/oh/hdsc/noaaatlas2.htm>
- 7 Skagit County GIS. Accessed 2018. FEMA Q3 100 Year Flood Map. <https://www.skagitcounty.net/GIS/Documents/Flood/FEMA%20Q3%20100%20Year%20Floodplain%20Map.pdf>
- 8 Skagit County iMap. Accessed 2018. <https://www.skagitcounty.net/Maps/iMap/>
- 9 US EPA. Accessed 2018. Sole Source Aquifer Interactive Map. <https://epa.maps.arcgis.com/apps/webappviewer/index.html?id=9ebb047ba3ec41ada1877155fe31356b>
- 10 USGS. Accessed 2018. The National Map. <https://viewer.nationalmap.gov/advanced-viewer/>
- 11 WA Dept. of Ecology. Accessed 2018. What's in My Neighborhood. <https://fortress.wa.gov/ecy/neighborhood/>
- 12 WA Dept. of Ecology. Accessed 2018. Well Report Viewer. <https://fortress.wa.gov/ecy/waterresources/map/WCLSWebMap/default.aspx>
- 13 WA Dept. of Fish & Wildlife. Accessed 2018. Priority Habitats and Species (PHS on the Web). <http://apps.wdfw.wa.gov/phsontheweb/>
- 14 WA Dept. of Health Office of Drinking Water. Accessed 2018. Find Water System. <https://fortress.wa.gov/doh/eh/portal/odw/si/FindWaterSystem.aspx>

SITE HAZARD ASSESSMENT
Worksheet 2
Route Documentation

Cleanup Site ID: 12482

Quiet Cove

Facility/Site ID: 20859

1. SURFACE WATER ROUTE

List those substances to be considered for scoring:

TPH-G, naphthalene, benzo(a)anthracene, arsenic

Explain the basis for choice of substances to be used in scoring:

Substances have been detected in groundwater, the potential source of surface water contamination.

List those management units to be considered for scoring:

Groundwater

Explain basis for choice of unit to be used in scoring:

Substances have been detected in groundwater.

2. AIR ROUTE

List those substances to be considered for scoring:

Benzene, toluene, ethylbenzene, xylenes

Explain the basis for choice of substances to be used in scoring:

Volatile substances that have been detected in the subsurface.

List those management units to be considered for scoring:

Soil

Explain basis for choice of unit to be used in scoring:

Volatile substances have been detected in shallow soil (2-6 feet bgs) on Site.

3. GROUNDWATER ROUTE

List those substances to be considered for scoring:

TPH-G, naphthalene, benzo(a)anthracene, arsenic

Explain the basis for choice of substances to be used in scoring:

Substances have been detected in groundwater.

List those management units to be considered for scoring:

Groundwater

Explain basis for choice of unit to be used in scoring:

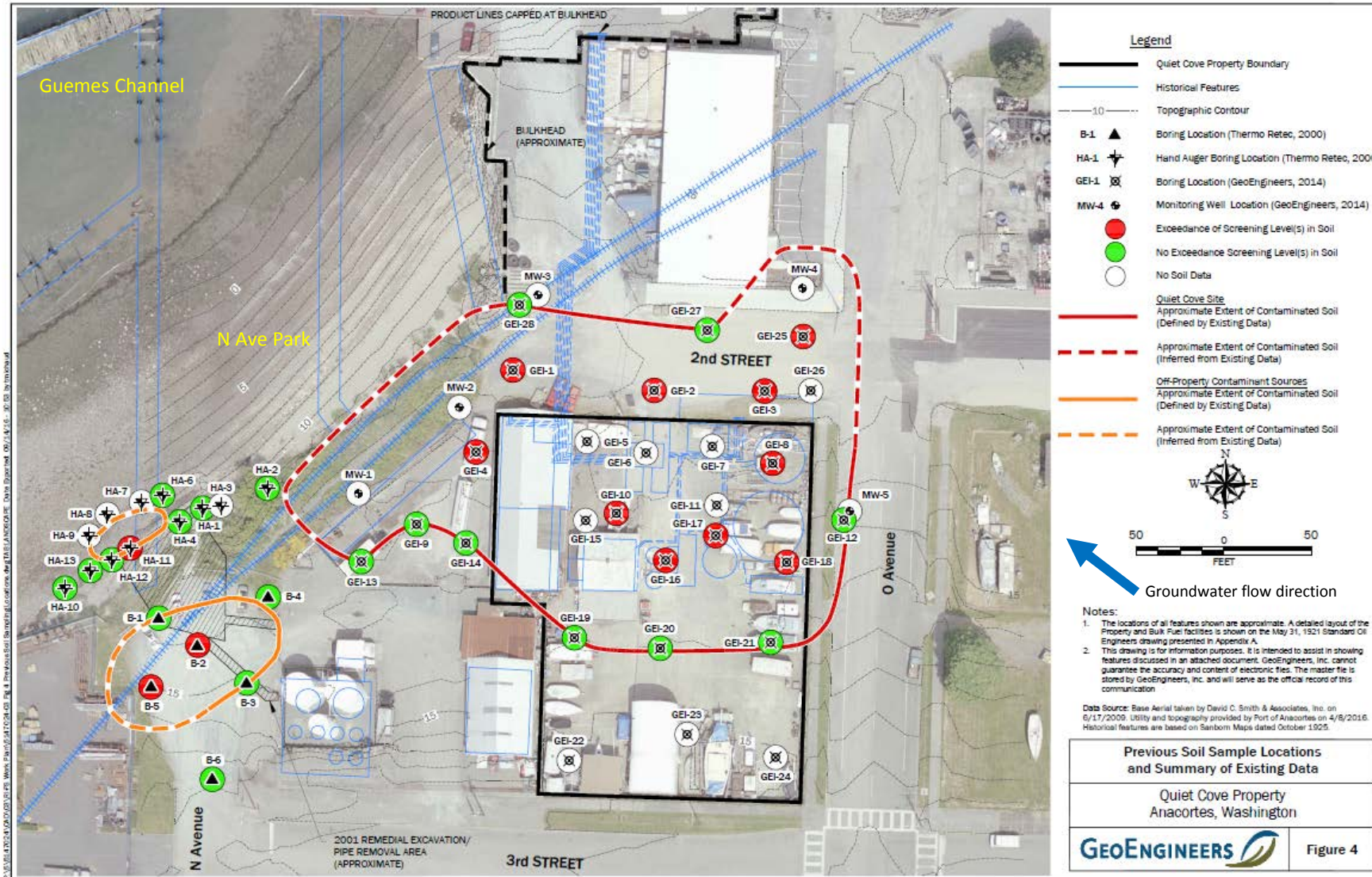
Substances have been detected in groundwater.

Maximum concentrations of chemicals in soil and groundwater sampled on Site in 2014.

CHEMICAL	MAXIMUM CONCENTRATION^a	SCREENING CONCENTRATION^{a, b} (vadose/saturated)	MEDIA	SAMPLE ID (depth, zone)
TPH-G	9,400	30/30	soil	GEI-17 (4-6 ft, saturated)
TPH-D	18,000	2,000/2,000		GEI-4 (2-3 ft, vadose)
TPH-O	21,000	2,000/2,000		GEI-4 (2-3 ft, vadose)
benzene	62	0.05/0.05		GEI-17 (4-6 ft, saturated)
toluene	180	3.78/0.22		GEI-17 (4-6 ft, saturated)
ethylbenzene	16	1.12/0.06		GEI-17 (4-6 ft, saturated)
xylenes	361	2.83/0.16		GEI-17 (4-6 ft, saturated)
naphthalene	27.4	0.25/0.01		GEI-4 (2-3 ft, vadose)
cPAH TEQ	3.97	0.22/0.011		GEI-10 (4-6 ft, saturated)
cadmium	2.4	1.2/1		GEI-4 (2-3 ft, vadose)
chromium	52	1,000/50		GEI-25 (4-6 ft, saturated)
TPH-D	2,600	500	groundwater	MW-3
TPH-O	980	500		MW-2
naphthalene	56	8.9		MW-3
benzo(a)anthracene	0.015	0.01		MW-3
arsenic	10	5		MW-5

a - soil concentrations all mg/kg; groundwater concentrations all µg/L

b – site-specific screening concentrations taken from Table 1 and 2 in the RI/FS Work Plan



Worksheet 4

Surface Water Route

CSID: 12482

Site: Quiet Cove

1.0 SUBSTANCE CHARACTERISTICS

1.1 Human Toxicity

Substance	Drink. Wat. Stnd.		Acute Toxicity		Chronic Toxicity		Carcinogenicity	
	Value (ug/L)	Score	Value (mg/kg)	Score	Value (mg/kg/day)	Score	Adj. CPFo (risk/mg/kg-day)	Score
Gasoline (benzene)	5.00E+00	8	3.31E+03	3	4.00E-03	3	5.50E-02	5
Naphthalene	--	X	4.90E+02	5	2.00E-02	1	--	X
Benzo(a)anthracene	2.00E-03	10	--	X	3.00E-03	3	8.00E-02	5
Arsenic	1.00E+01	8	7.63E+02	5	3.00E-04	5	1.50E+00	7
Maximum score:	10							
Bonus points:	2						Human Toxicity Score: 12	
Source:	WARM Toxicity Database						Range: 1-12	

1.2 Environmental Toxicity

Freshwater:

Marine: X

Substance	Acute Water Quality Criterion Value	
	(ug/L)	Score
Gasoline (benzene)	5.10E+03	2
Naphthalene	2.35E+03	2
Benzo(a)anthracene	--	X
Arsenic	6.90E+01	6
Maximum score:	6	
Source:	WARM Toxicity Database	
		Environmental Toxicity Score: 6
		Range: 2-10

1.3 Substance Quantity

Amount: 1.36 acres

Basis: area delineated as contaminated soil in RI work plan

Source: site report

Substance Quantity Score: 8

Range: 1-10

2.1 Containment

Description: pathway is groundwater to surface water, and chemicals detected in groundwater
Source: site report
Containment Score: 10
Range: 0-10

SUBSTANCE PARAMETER CALCULATIONS

Human Health Pathway

SUBh (Human Toxicity + 3) x (Containment + 1) + Substance Quantity 173.0

Environmental Pathway

SUBe (Environ. Toxicity + 3) x (Containment + 1) + Substance Quantity 107.0

2.0 MIGRATION POTENTIAL

2.2 Surface Soil Permeability

Description: sandy fill, sand with silt
Source: site reports
Soil Permeability Score: 1
Range: 1-7

2.3 Total Annual Precipitation

Amount (in.): 26.9
Source: mean annual precip (NOAA, 2000-2011 data)
Annual Precipitation Score: 2
Range: 1-5

2.4 Maximum Two-Year/24-Hour Precipitation

Amount (in.): 1.43
Source: NOAA Atlas2
24-Hour Precipitation Score: 2
Range: 1-5

2.5 Flood Plain

Classification: not in flood plain
Source: Skagit County flood map
Floodplain Score: 0
Range: 0-2

2.6 Terrain Slope

Degree of slope: 5.30%
Source: USGS National Map (topography)
Skagit County iMap (distance)
Terrain Slope Score: 3
Range: 1-5

MIGRATION PARAMETER CALCULATION

MIG = Soil Permeability + Annual Precip. + 24-Hour Precip. + Floodplain + Slope 8.0

3.0 TARGETS

3.1 Distance to Surface Water

Name: Guemes Channel (at N Ave Park)
Distance (ft): 114 Distance to Surface Water Score: 10
Source: Skagit County iMap Range: 0-10

3.2 Population Served within 2 Miles

Population: surface water is marine/nonpotable Population Served Score: 0
Source: site report Range: 0-75

3.3 Area Irrigated within 2 Miles

Basis: surface water is marine
Area (acres): 0 Area Irrigated Score: 0
Source: site report Range: 0-30

3.4 Distance to Nearest Fishery Resource

Name: Guemes Channel
Distance (ft): 114 Distance to Fishery Score: 12
Source: Skagit County iMap, WA DFW PHS on the Web Range: 0-12

3.5 Distance to Nearest Sensitive Environment

Name: Guemes Channel
Distance (ft): 114 Distance to Sensitive Environment Score: 12
Source: Skagit County iMap Range: 0-12

TARGET PARAMETER CALCULATIONS

Human Health Pathway

TARh: Dist. to Surface Water + Population Served + Area Irrigated 10.0

Environmental Pathway

TARe Dist. to Surface Water + Dist. to Fishery + Dist. to Sensit. Environ. 34.0

4.0 RELEASE

Evid. of release? no available data for sediment and surface water downgradient of Site
Source: site report Release Score (REL): 0.0
Range: 0 or 5

SURFACE WATER ROUTE CALCULATIONS

Human Health Pathway

$$SWh = (SUBh \times 40/175) \times [(MIG \times 25/24) + REL + (TARh \times 30/115)] / 24$$

18.0

Environmental Pathway

$$SWe = (SUBe \times 40/153) \times [(MIG \times 25/24) + REL + (TARe \times 30/34)] / 24$$

44.7

Range: 0-100

Worksheet 5

Air Route

CSID: 12482

Site: Quiet Cove

1.0 SUBSTANCE CHARACTERISTICS

1.1 Introduction

No scoring in Section 1.1.

1.2 Human Toxicity

Substance	Amb. Air Stnd.		Acute Toxicity		Chronic Toxicity		Carcinogenicity	
	Value (ug/m ³)	Score	Value (mg/m ³)	Score	Value (mg/kg/day)	Score	Adj. CPF _i (risk/mg/kg- day)	Score
Benzene	3.45E-02	10	3.19E+04	3	8.57E-03	8	2.73E-02	5
Toluene	5.00E+03	1	--	X	1.43E+00	3	--	X
Ethylbenzene	4.00E-01	10	--	X	2.86E-01	3	--	X
Xylenes	--	X	2.17E+04	3	2.86E-02	5	--	X

Maximum score: 10

Bonus points: 2

Source: WARM Toxicity Database

Human Toxicity Score: 12

Range: 1-12

1.3 Mobility

Gaseous Mobility

Substance	Vapor Pressure		Henry's Law	
	Value (mm Hg)	Score	Value (atm- m ³ / mol)	Score
Benzene)	9.5E+01	4	5.56E-03	4
Toluene	2.8E+01	4	6.63E-03	4
Ethylbenzene	7.0E+00	3	7.88E-03	4
Xylenes	1.0E+01	3	6.80E-03	4

Maximum score: 4

Source: WARM Toxicity Database

Particulate Mobility

Soil type:

Erodibility factor:

Climatic factor:

Mobility value:

Source:

Mobility Score: 4

Range: 0-4

1.4 Human Toxicity/Mobility

Source: WARM Scoring Manual

Human Tox/Mobil Score: 24
Range: 1-24

1.5 Environmental Toxicity/Mobility

Substance	Acute	
	Value (mg/m ³)	Score
Benzene	3.19E+04	3
Toluene	--	X
Ethylbenzene	--	X
Xylenes	2.17E+04	3
Maximum score	3	
Source:	WARM Toxicity Database	

Environmental Toxicity Score: 3
Range: 1-10

Environmental Tox/Mobil Score: 6
Range: 1-24

1.6 Substance Quantity

Quantity: 6,800 yd³

Basis: aerial extent of contamination x 1 yd vertical depth (4-6 ft bgs)

Source: site report

Substance Quantity Score: 8
Range: 1-10

2.1 Containment

Description: cover > 2 ft thick with no vapor collection system

Basis: site report

Containment Score: 5
Range: 0-10

SUBSTANCE PARAMETER CALCULATIONS

Human Health Pathway

SUBh (Human Tox/Mobil + 5) x (Containment +1) + Substance Quantity

182.0

Environmental Pathway

SUBe (Environ. Tox/Mobil + 5) x (Containment +1) + Substance Quantity

74.0

3.0 TARGETS

3.1 Nearest Population

Description: Port buildings

Distance (ft): 90

Source: Skagit County iMap

Nearest Population Score: 10
Range: 0-10

3.2 Nearest Sensitive Environment

Description: N Ave Park/Guemes Channel
Distance (ft): 100
Source: Skagit County iMap

Nearest Sensitive Environment Score: 7
Range: 0-7

3.3 Population within One-Half Mile

Number: 842
Source: Missouri Census Data Center

Population within Half Mile Score: 29.0
Range: 0-75

TARGET PARAMETER CALCULATIONS

Human Health Pathway

TARh: Nearest Population + Population within Half Mile

39.0

Environmental Pathway

TARe Nearest Sensitive Environment

7.0

4.0 RELEASE

Evid. of release? no reported vapor issues on site
Source: site report

Release Score (REL): 0.0

Range: 0 or 5

AIR ROUTE CALCULATIONS

Human Health Pathway

AIRh : (SUBh x 60/329) x {REL + (TARh x 35/85)} / 24

22.2

Environmental Pathway

AIRe : (SUBe x 60/329) x {REL + (TARe x 35/85)} / 24

1.6

Range: 0-100

Worksheet 6

Groundwater Route

CSID: 12482

Site: Quiet Cove

1.0 SUBSTANCE CHARACTERISTICS

1.1 Human toxicity

Substance	Drink. Wat. Stnd		Acute Toxicity		Chronic Toxicity		Carcinogenicity	
	Value (ug/L)	Score	Value (mg/kg)	Score	Value (mg/kg/day)	Score	Adj. CPFo (risk/mg/kg-day)	Score
Gasoline (benzene)	5.00E+00	8	3.31E+03	3	4.00E-03	3	5.50E-02	5
Naphthalene	--	X	4.90E+02	5	2.00E-02	1	--	X
Benzo(a)anthracene	2.00E-03	10	--	X	3.00E-03	3	8.00E-02	5
Arsenic	1.00E+01	8	7.63E+02	5	3.00E-04	5	1.50E+00	7
Maximum score:	10							
Bonus points:	2						Human Toxicity Score: 12	
Source:	WARM Toxicity Database						Range: 1-12	

1.2 Mobility

Substance	Solubility Value		
	(mg/L)	Score	
Gasoline (benzene)	1.75E+03	3	
Naphthalene	3.10E+01	1	
Benzo(a)anthracene	9.40E-03	0	
Arsenic	K >1	3	
Maximum value:	3		
Source:	WARM Toxicity Database		
			Mobility Score: 3
			Range: 1-3

1.3 Substance quantity

Quantity:	6,800 yd ³	
Basis:	aerial extent of contamination x 1 yd vertical depth (4-6 ft bgs)	
Source:	site report	Substance Quantity Score: 8
		Range: 1-10

2.1 Containment

Description:	contaminants detected in groundwater	
Source:	site report	Containment Score: 10
		Range: 0-10

SUBSTANCE PARAMETER CALCULATION

SUB = (Human Toxicity + Mobility + 3) x (Containment + 1) + Substance Quantity

206.0

2.0 MIGRATION POTENTIAL

2.2 Net precipitation

Amount (in.): 11.7

Source: mean annual precip (NOAA, 2000-2011 data)
- annual evapotranspiration (ESRI)

Net Precipitation Score: 2

Range: 0-5

2.3 Subsurface Hydraulic Conductivity

Description: sandy fill, sand with silt

Source: site report

Hydraulic Conductivity Score: 4

Range: 1-4

2.4 Vertical Depth to Aquifer

Depth (ft): 0 (contaminants detected in groundwater)

Source: site report

Depth to Aquifer Score: 8

Range: 1-8

MIGRATION PARAMETER CALCULATION

MIG = Depth to Aquifer + Net Precipitation + Hydraulic Conductivity

14.0

3.0 TARGETS

3.1 Aquifer Usage

Description: groundwater not usable (saltwater intrusion)

Source: site report

Aquifer Use Score: 1

Range: 1-10

3.2 Distance to Nearest Drinking Water Well

Distance (ft): see Current Site Conditions

Source: WDOH Find Water System

Well Distance Score: 0

Range: 0-5

3.3 Population Served by Drinking Water Wells within Two Miles

No. of people: see Current Site Conditions

Source: WDOH Find Water System, WDOE Well Report Viewer

Population Served Score: 0.0

Range: 0-100

3.4 Area Irrigated by Wells within Two Miles

Area (acres): see Current Site Conditions

Source: WDOE Well Report Viewer

Area Irrigated Score: 0.0

Range: 0-50

TARGET PARAMETER CALCULATION

1.0

TAR = Aquifer Use + Well Distance + Population Served + Area Irrigated

4.0 RELEASE

Evid. of release? confirmed detections in groundwater
Source: site report

Release Score (REL): 5.0

Range: 0 or 5

GROUND WATER ROUTE CALCULATION

42.5

GW = (SUB x 40/208) x {(MIG x 25/17) + REL + (TAR x 30/165)} / 24

Range: 0-100

Washington Ranking Method

Route Scoring Summary and Ranking Calculation

CSID: 12482
Site: Quiet Cove

Human Health Route Scores		
Pathway	Score	Quintile
Surface water	18.0	3
Air	22.2	3
Groundwater	42.5	4

Quintile	Value
High (H)	4
Middle (M)	3
Low (L)	3

Human Health Pathway Quintiles - February 2018							
Quintile	Surface Water		Air		Groundwater		
1	<=	7.9	<=	8.5	<=	24.0	
2		8.0		16.3		33.0	
3		15.5		25.3		40.3	
4		21.4		40.1		49.8	
5	>=	29.9	>=	40.2	>=	49.9	

$$(H^2 + 2M + L) / 8$$

Human Health Priority Bin Score: 3.1

Environmental Route Scores		
Pathway	Score	Quintile
Surface water	44.7	4
Air	1.6	3

Quintile	Value
High (H)	4
Low (L)	3

Environmental Pathway Quintiles - February 2018				
Quintile	Surface Water		Air	
1	<=	11.3	<=	1.2
2		11.4		1.5
3		24.2		14.1
4		32.1		27.7
5	>=	49.7	>=	27.8

$$(H^2 + 2L) / 7$$

Environmental Priority Bin Score: 3.1

FINAL MATRIX RANKING

Human Health Priority	Environmental Priority					
	5	4	3	2	1	n/a
5	1	1	1	1	1	1
4	1	2	2	2	3	2
3	1	2	3	4	4	3
2	2	3	4	4	5	3
1	2	3	4	5	5	5
n/a	3	4	5	5	5	NFA

n/a - not applicable

NFA - no further action

Site Rank: 2