



Cleanup Progressing at Pasco Sanitary Landfill Site

(also known as the Pasco NPL Landfill Site)

Site Location and Contaminants of Concern

The Washington State Department of Ecology is overseeing work being done by several parties, known as Potentially Liable Persons (PLPs), to clean up soil and groundwater contamination at the Pasco Landfill site. The contamination consists of volatile organic chemicals such as solvents, herbicides, sludges, industrial wastes and other materials. The landfill property covers nearly 250 acres and is located about 1.5 miles northeast of the city of Pasco, Franklin County, Washington. The landfill is near Dietrich Road by the intersection of Kahlotus Road with U.S. Highway 12 (see Figures 1 and 2).

The National Priorities List (NPL)

In 1990 the landfill was listed on the U.S. Environmental Protection Agency's (EPA) National Priorities List (NPL). The site was placed on this list because several of the contaminants found in soil and groundwater posed a potential threat to human health and the environment. Sites on this list are called Superfund sites and are considered a high priority for investigation and cleanup. This cleanup is being conducted under State authority.

Plume Size Decreases

Several of the chemicals associated with the landfill wastes leached into the soil and groundwater. A long, narrow area of groundwater contamination called a plume lies beneath certain areas of the landfill. This plume extends nearly 1.5 miles beyond the landfill's southern boundary. Current groundwater monitoring shows a decrease in plume size. A comparison of the plume size between 1996 and 2006 is shown in Figures 1 and 2.

Protecting the Public

Since 1997, Ecology and certain PLPs implemented several actions to protect the public from site-related contamination. Some of these actions included:

- Sampling residential wells near the site to determine if they were contaminated.
- Providing clean water to residents and properties impacted by the contamination.
- Creating a groundwater protection area that includes the plume boundaries, and annually surveying the affected public.

Additional Steps Taken to Correct the Problem

Many studies, monitoring, and cleanup activities occurred between 1983 and 2007. These studies provide information about the amount, type, and location of the contamination. In response to these findings interim actions were taken to

Update October 2007

Para asistencia en Español

Sr. Gus Ordóñez
WA Department of Ecology
300 Desmond Drive
Lacey, WA 98503
360/407-6619

Technical Comments and Questions

Mr. Dave George
WA Department of Ecology
Toxics Cleanup Program
4601 N. Monroe
Spokane, WA 99205-1295
509/329-3520 or e-mail:
cgeo461@ecy.wa.gov

Community Involvement Questions

Ms. Carol Bergin
Public Involvement Coordinator
Same address as Dave George
509/329-3546 e-mail:
cabe461@ecy.wa.gov

Review Documents

Mid-Columbia Library
Pasco Branch
1320 W Hopkins Street
Pasco, WA 99301-5097

or

Department of Ecology
Eastern Regional Office
4601 N. Monroe
Spokane, WA 99205-1295
Mrs. Johnnie Landis
509/329-3415

or

Ecology's Toxics Cleanup Web Site:

http://www.ecy.wa.gov/programs/tcp/sites/sites_information.html

(Then click on Pasco Landfill under Franklin County)

Facility Site ID No. 615198

minimize the release of hazardous substances from the site. Some of the cleanup efforts to date include:

- Removing nearly 5,500 cubic yards of herbicide waste in drums from the Zone B section of the landfill.
- Installing treatment systems at the landfill.
- Placing protective covers over specific landfill areas.
- No longer accepting waste at any of the landfill areas.
- Routinely monitoring groundwater quality throughout the plume.

Site Background

The landfill originally operated as an open burn facility from 1958 through 1971 and was permitted to receive various types of household, commercial and industrial waste. Operations from 1972 through 2001 involved acceptance of commercial and household waste. Between 1972 and 1974, the industrial waste section accepted over 35,000 drums and several tons of bulk liquids, septic tank waste, sewage sludges and animal fat emulsions. The landfill is divided into three main sections that received the various types of wastes.

- The **New Waste Section** received general garbage until closure in 2001.
- The **municipal waste section** received household and commercial garbage until 1993.
- **Zone A** contains an estimated 35,000 55-gallon drums. The drums contain solvent and paint sludges, cleaners and other industrial waste.
- **Zone B** stored nearly 5,000 drums of herbicide-manufacturing waste. The drums were removed in 2002.
- **Zones C and D** contain approximately three million gallons of plywood resin waste, wood treatment and preservative waste, lime sludge, cutting oils, paint and paint solvent waste and other bulk liquid waste.

Cleanup Moves Forward

Review of data from groundwater monitoring conducted between 2001 and 2006 indicates more information is necessary. The additional data is necessary in order to develop the most effective Cleanup Action Plan (CAP). The CAP identifies the preferred cleanup action to be implemented at the site. Development of the CAP relies upon previous studies, supplemental data, and consideration of existing and/or alternative cleanup actions. The CAP also outlines other requirements necessary to complete the cleanup.

Ecology plans to review and consider additional data provided by the PLPs and develop a draft CAP. The public will then be provided an opportunity to comment on the draft document. After public comments are considered, the CAP becomes final.

Questions About the Groundwater Protection Area or a Well On Your Property?

A groundwater protection area has been established within certain boundaries near the Pasco Landfill site. Use of well water in this area is restricted. Please contact Ecology's site managers if you have any questions: Chuck Gruenenfelder 509/329-3439 or Dave George at 509/329-3520.

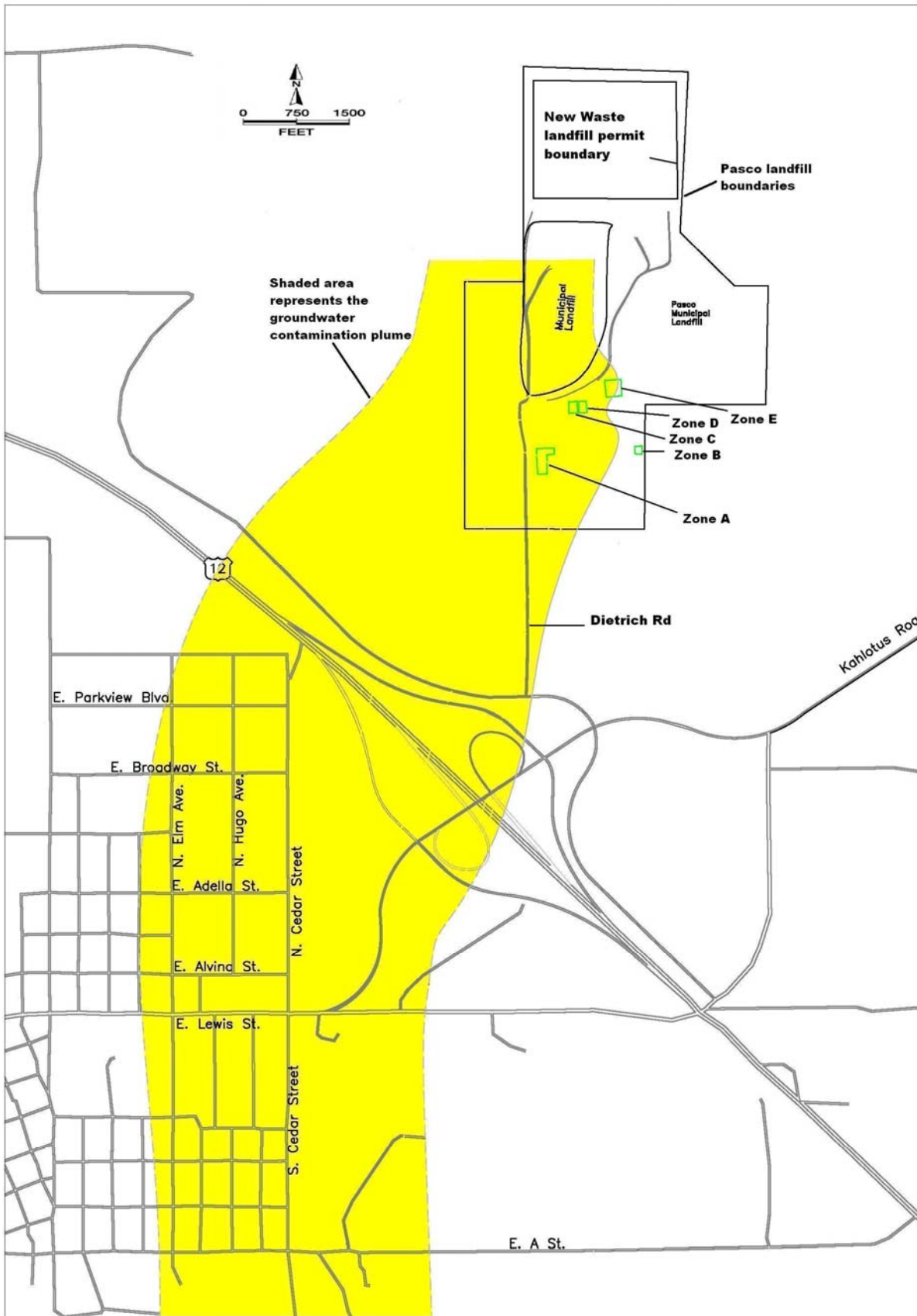


FIGURE 1
Groundwater Contamination Plume
4th Quarter 1996

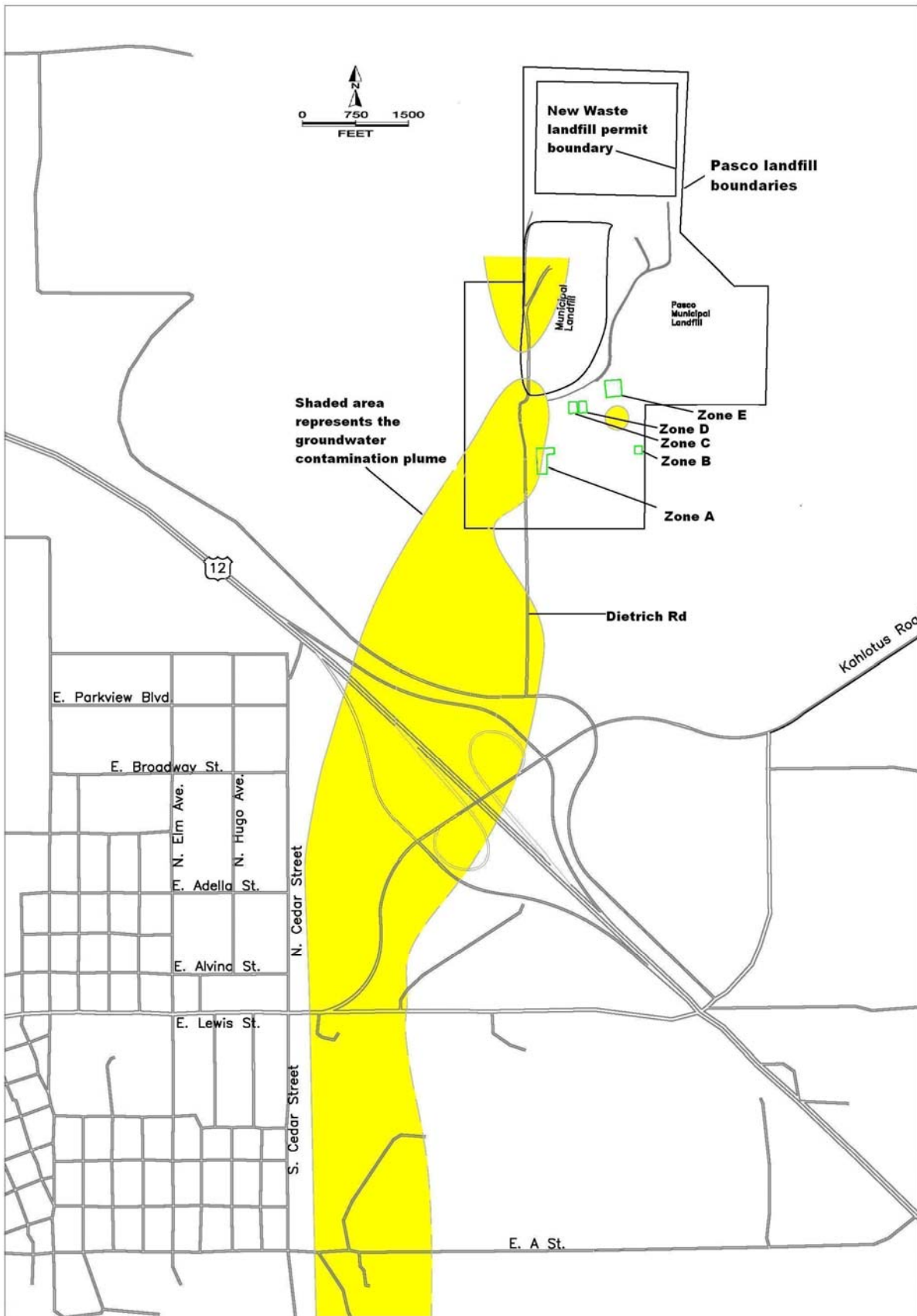


FIGURE 2
Groundwater Contamination Plume
4th Quarter 2006