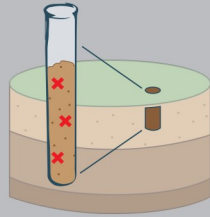


Cleanup Process for Contaminated Sites

Washington State Department of Ecology

Remedial Investigation



Defines the nature, extent, and magnitude of pollution at a site in order to identify the best method for cleanup.

Interim Action

May be done before or after the Remedial Investigation. It is a partial cleanup to correct a problem that:

- may get substantially worse or more costly if not addressed immediately, or
- poses an immediate risk to human health or the environment, or
- is needed before another stage of the cleanup process can proceed.

Feasibility Study



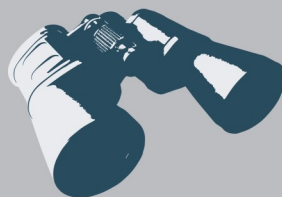
Takes the information from the Remedial Investigation to identify and evaluate cleanup alternatives. Then an optimal alternative will be selected and incorporated into the Cleanup Action Plan.

Cleanup Action Plan



Specifies cleanup standards, methods, and schedule, describes the steps to be taken, and includes any additional environmental monitoring required during and after the cleanup.

Cleanup & Monitoring



Implementation of the Cleanup Action Plan includes design, construction, and monitoring.



Public comment periods held at key points throughout the cleanup process