

Actual sampling location

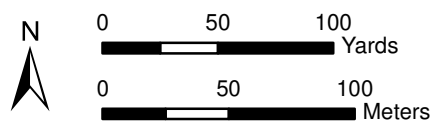
- Surface sediment
- Core
- ▲ Geochronology core
- ⊗ Target sampling location

Stormwater structures

- ◆ Outfall
- ◆ City outfall
- Deck Drain

□ T-91 site boundary

Aerial photo credit: Port of Seattle 2016, photo date unknown

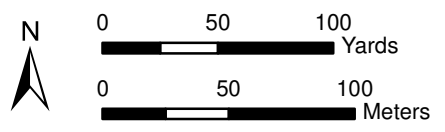


Map 1. T-91 Phase 2 proposed and actual surface and subsurface sediment sampling locations

DRAFT

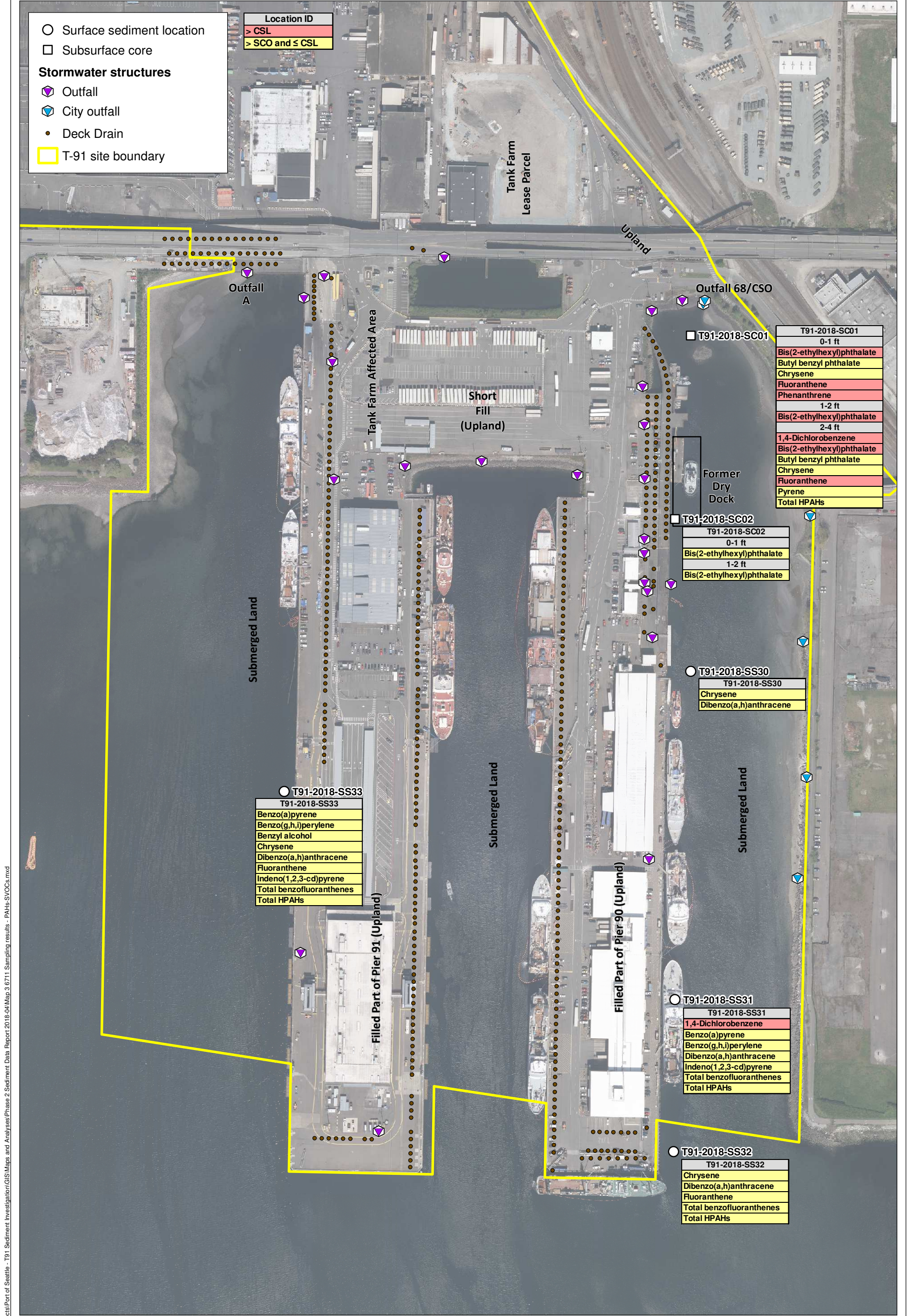


Aerial photo credit: Port of Seattle 2016, photo date unknown



Map 2. T-91 Phase 2 sampling results - all SMS

DRAFT



○ Surface sediment location
 □ Subsurface core
Stormwater structures
 ◆ Outfall
 ◆ City outfall
 ● Deck Drain
 □ T-91 site boundary

Location ID
> CSL
> SCO and ≤ CSL

T91-2018-SC01	
0-1 ft	
Bis(2-ethylhexyl)phthalate	
Butyl benzyl phthalate	
Chrysene	
Fluoranthene	
Phenanthrene	
1-2 ft	
Bis(2-ethylhexyl)phthalate	
2-4 ft	
1,4-Dichlorobenzene	
Bis(2-ethylhexyl)phthalate	
Butyl benzyl phthalate	
Chrysene	
Fluoranthene	
Pyrene	
Total HPAHs	

T91-2018-SC02	
0-1 ft	
Bis(2-ethylhexyl)phthalate	
1-2 ft	
Bis(2-ethylhexyl)phthalate	

T91-2018-SS30	
T91-2018-SS30	
Chrysene	
Dibenzo(a,h)anthracene	

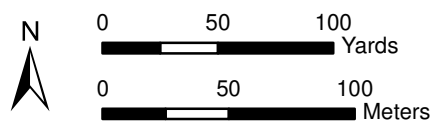
T91-2018-SS33	
T91-2018-SS33	
Benzo(a)pyrene	
Benzo(g,h,i)perylene	
Benzyl alcohol	
Chrysene	
Dibenzo(a,h)anthracene	
Fluoranthene	
Indeno(1,2,3-cd)pyrene	
Total benzofluoranthenes	
Total HPAHs	

T91-2018-SS31	
T91-2018-SS31	
1,4-Dichlorobenzene	
Benzo(a)pyrene	
Benzo(g,h,i)perylene	
Dibenzo(a,h)anthracene	
Indeno(1,2,3-cd)pyrene	
Total benzofluoranthenes	
Total HPAHs	

T91-2018-SS32	
T91-2018-SS32	
Chrysene	
Dibenzo(a,h)anthracene	
Fluoranthene	
Total benzofluoranthenes	
Total HPAHs	

Prepared by craigh. 9/9/2018. W:\Projects\Port of Seattle - T91 Sediment Investigation\GIS\Maps and Analyses\Phase 2 Sediment Data Report 2018-04\Map 3 6711 Sampling results - PAHs-SVOCs.mxd

Aerial photo credit: Port of Seattle 2016, photo date unknown

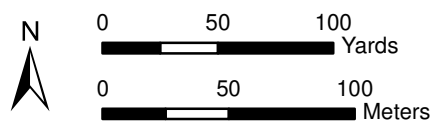


Map 3. T-91 Phase 2 sampling results - PAHs and SVOCs

DRAFT



Aerial photo credit: Port of Seattle 2016, photo date unknown



Map 4. T-91 Phase 2 sampling results - total PCBs

DRAFT