



Public Participation Plan

**Harris Avenue Shipyard Cleanup Site
201 Harris Avenue, Bellingham
Whatcom County**

Toxics Cleanup Program

Washington State Department of Ecology
Northwest Region Office
Bellingham, Washington

February 2025

Publication Information

This document is available on the Department of Ecology's [Harris Avenue Shipyard](#)¹ cleanup site page.

Cover photo credit

- Port of Bellingham, October 2019

Related Information

- Cleanup Site ID: 2922
- Facility Site ID: 193

Contact Information

[Toxics Cleanup Program](#)²

Kristen Forkeutis, Outreach Specialist
Kristen.Forkeutis@ecy.wa.gov
425-240-4353

John Rapp, Site Manager
John.Rapp@ecy.wa.gov
206-247-3242

Northwest Region Office

PO Box 330316
Shoreline, WA 98133-9716
Phone: 206-594-0000

Bellingham Field Office

913 Squalicum Way, Unit 101
Bellingham, WA 98225
Phone: 360-255-4400

ADA Accessibility

The Department of Ecology is committed to providing people with disabilities access to information and services by meeting or exceeding the requirements of the Americans with Disabilities Act (ADA), Section 504 and 508 of the Rehabilitation Act, and Washington State Policy #188.

To request an ADA accommodation, contact the Ecology ADA Coordinator by phone at 360-407-6831 or email at ecyadacoordinator@ecy.wa.gov. For Washington Relay Service or TTY call 711 or 877-833-6341. Visit [Ecology's website](#)³ for more information

Language Access

The Department of Ecology offers free translation and interpretation services. If you need help in your preferred language, please call Kristen Forkeutis at 425-240-4353 and request an interpreter, or email Kristen.Forkeutis@ecy.wa.gov.

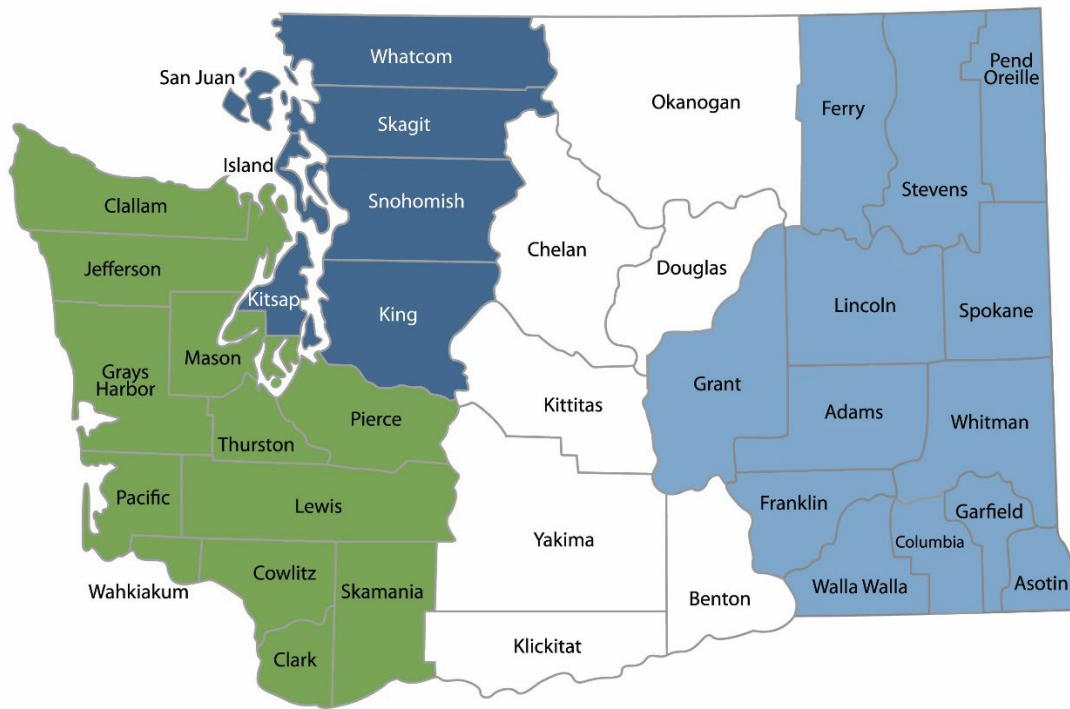
¹ <https://apps.ecology.wa.gov/cleanupsearch/site/193>

² <https://ecology.wa.gov/About-us/Who-we-are/Our-Programs/Toxics-Cleanup>

³ <https://ecology.wa.gov/ADA>

Department of Ecology's Region Offices

Map of Counties Served



Southwest Region 360-407-6300	Northwest Region 206-594-0000	Central Region 509-575-2490	Eastern Region 509-329-3400
---	---	---------------------------------------	---------------------------------------

Region	Counties served	Mailing Address	Phone
Southwest	Clallam, Clark, Cowlitz, Grays Harbor, Jefferson, Mason, Lewis, Pacific, Pierce, Skamania, Thurston, Wahkiakum	PO Box 47775 Olympia, WA 98504	360-407-6300
Northwest	Island, King, Kitsap, San Juan, Skagit, Snohomish, Whatcom	PO Box 330316 Shoreline, WA 98133	206-594-0000
Central	Benton, Chelan, Douglas, Kittitas, Klickitat, Okanogan, Yakima	1250 W Alder St Union Gap, WA 98903	509-575-2490
Eastern	Adams, Asotin, Columbia, Ferry, Franklin, Garfield, Grant, Lincoln, Pend Oreille, Spokane, Stevens, Walla Walla, Whitman	4601 N Monroe Spokane, WA 99205	509-329-3400
Headquarters	Across Washington	PO Box 47600 Olympia, WA 98504	360-407-6000

Table of Contents

Public Involvement in Contamination Cleanup	6
Site contacts.....	6
Public Participation Activities	6
How we share information with the community.....	7
How to share information with us	8
Public Participation Grants	9
Site Information.....	10
Land use.....	10
Cleanup Plans.....	11
How the site became contaminated.....	12
Status of cleanup	12
Area land use and community	12
Tribal engagement.....	13
Environmental Justice.....	13
Washington’s Cleanup Laws	17
Model Toxics Control Act.....	17
State Environmental Policy Act.....	17
Plan Amendments	17
Appendices	19
Appendix A. Steps in the MTCA cleanup process	19
Appendix B. EPA EJScreen Community Report & ACS Summary Report	19

List of Figures

Figure 1: Aerial view of Harris Avenue Shipyard cleanup site.....	10
Figure 2: Harris Avenue Shipyard facing north, January 1967; Washington State Archives.....	10
Figure 3: Harris Avenue Pier before and after the 2018 interim action.....	11
Figure 4: Harris Avenue Shipyard site location and Cleanup Action Plan for the upland area of the site	11
Figure 5: Fairhaven urban village and area boundaries map (see Footnote 11)	13
Figure 6: Washington Environmental Health Disparities Map for the Harris Avenue Shipyard site census tract 001100 with an environmental health risk ranking of 3.....	15
Figure 7: EPA EJScreen generated map of the outreach area for the Harris Avenue Shipyard site	16

Public Involvement in Contamination Cleanup

The Washington State Department of Ecology (Ecology) developed this public participation plan (plan) in cooperation with the Port of Bellingham (Port), the party responsible for the cleanup costs. The purpose of the plan is to promote meaningful community involvement during cleanup of the Harris Avenue Shipyard site.

This plan outlines how Ecology will keep the public informed about contamination investigations and cleanup options at each stage of the process. Please review Appendix A for more information about the cleanup process. The plan also details when and how the community can participate in the cleanup process. We encourage the public to engage with the decision-making opportunities and provide input.

Site contacts

To be included in the site record, comments about the cleanup process must be submitted during comment periods. Questions and informal comments or information about the site's history are welcome anytime.

WA Dept of Ecology

Bellingham Field Office
913 Squalicum Way, Unit 101
Bellingham, WA 98225

John Rapp, Site Manager
John.Rapp@ecy.wa.gov
206-247-3242

Kristen Forkeutis, Outreach Specialist
Kristen.Forkeutis@ecy.wa.gov
425-240-4353

Potentially Liable Person (PLP)

Port of Bellingham
1801 Roeder Ave
Bellingham, WA 98225

Brian Gouran, Dir. of Envr. and Planning Services
briang@portofbellingham.com
360-676-2500

If you are unable to reach these contacts, please visit the [Harris Avenue Shipyard cleanup site page](#)⁴ for up-to-date contact information.

Public Participation Activities

Members of the public may ask questions, submit informal comments, or share site information at any time. Interested parties do not need to wait for a formal public comment period to contact Ecology.

However, to be included in the formal site record, comments about the site investigation, cleanup alternatives, or cleanups must be submitted during formal comment periods. In addition, the public is invited to review site documents before they become final. This is the

⁴ <https://apps.ecology.wa.gov/cleanupsearch/site/193>

most direct and influential way to learn more about the site and be involved in the cleanup's decision-making.

How we share information with the community

During specific stages of the cleanup, Ecology will mail notices about public comment periods to addresses surrounding the site. The mailing list area will vary depending on the type of contamination and where it's located. However, the list will at least include addresses within a 1/4-mile radius of the site and other interested organizations and individuals. These notices will provide general information about the site, contact information for submitting comments, and times and locations of public meetings or hearings or how to request one if not yet scheduled.

Comment period notices will be available online and at document repositories (for example at the library closest to the site). Notices may also be posted in various locations throughout the community (for example, local businesses, schools, or post offices).

Ecology may also develop documents outside of comment periods to keep the community updated on the site's status. These informational documents will be available online and print copies may be mailed to the nearby community if we feel the message warrants the associated cost and resources.

Postal mailing list

Ecology maintains a mailing list that includes addresses within at least a 1/4-mile radius of the site and relevant local, state, and federal government contacts. All contacts receive public comment notices when draft documents are available.

We will add additional individuals, organizations, and other interested parties to the mailing list as requested. If you would like to be added to the mailing list for this site, please contact Kristen Forkeutis at 425-240-4353 or Kristen.Forkeutis@ecy.wa.gov.

Contaminated Site Register

Public comment periods, events, and other cleanup notices are published in Ecology's [Contaminated Site Register](#).⁵ To receive the *Contaminated Site Register* by email, please [subscribe online](#),⁶ or contact Sarah Kellington at sarah.kellington@ecy.wa.gov or 360-280-3167.

Newspaper display ads or legal notices

We announce public comment periods and events for this site in ads or notices published in *The Bellingham Herald* newspaper. We will also publish notice on our [Public Input & Events Listing webpage](#).⁷

⁵ <https://ecology.wa.gov/Regulations-Permits/Guidance-technical-assistance/Site-Register-lists-and-data>

⁶ <https://ecology.wa.gov/site-register>

⁷ <https://ecology.wa.gov/Events/Search/Listing>

Email lists

Ecology maintains an email list to update interested persons about this site. If you would like to be added to the email list for this site, please contact Kristen Forkeutis at 425-240-4353 or Kristen.Forkeutis@ecy.wa.gov.

Ecology's website and social media platforms

We maintain a website for the [Harris Avenue Shipyard site](#).⁸ The website provides site information, and you may download cleanup documents.

We may also share information about cleanup sites through [news releases, our ECOconnect blog, and social media](#).⁹

Places to see print documents

During public comment periods, you can find print documents at the following locations:

Bellingham Public Library, Central Branch
210 Central Avenue
Bellingham, WA 98225
Phone: 360-778-7823

Washington Department of Ecology
Bellingham Field Office
913 Squalicum Way, Unit 101
Bellingham, WA 98225

To schedule an appointment, please contact the Bellingham Field Office administration staff at 360-255-4400 or ECYDLBFOADMINSUPPORT@ecy.wa.gov.

If you would like to be mailed print documents, please contact Kristen Forkeutis at 425-240-4353 or Kristen.Forkeutis@ecy.wa.gov.

Signs around the cleanup site

We may also install signs displaying information about project status, traffic impacts, and health risks around the cleanup site.

How to share information with us

We hold public comment periods and sometimes public events to learn your thoughts, opinions, and concerns about cleanup at a site. We may also identify public concerns and cleanup goals by meeting with and soliciting information from interested community members and organizations. To collaborate with us about this site, please contact Kristen Forkeutis at 425-240-4353 or Kristen.Forkeutis@ecy.wa.gov.

⁸ <https://apps.ecology.wa.gov/cleanupsearch/site/193>

⁹ <https://ecology.wa.gov/about-us/who-we-are/news>

Public comment periods

At a minimum, the [Model Toxics Control Act](#) (MTCA, see page 17 for more information) requires 30-day comment periods to allow interested members of the public to comment on draft documents, legal agreements, and proposed cleanup actions. If there is significant interest, Ecology may extend the public comment period.

When Ecology oversees the State Environmental Policy Act (SEPA) determinations (see page 17 for more information), we hold comment periods for at least two weeks and may extend to 30 days or more when other cleanup documents are concurrently available for review.

Following a comment period, we publish all the input we received and respond to significant comments and questions, as appropriate. If the comments result in significant changes to the cleanup documents, then the documents will be revised and re-issued for public review. If the comments do not result in significant changes, the documents will become final.

Public events

We hold public meetings, workshops, open houses, and hearings based on community interest. At meetings, workshops, and open houses, attendees can ask questions, learn more about the site, and submit written comments when a comment period is open. At a public hearing, verbal comments are transcribed for the record, and Ecology responds to them after the comment period in our response to comments.

If we have not scheduled an event, we will hold one if 10 or more people request it. This may cause us to extend a public comment period, so the event occurs during it.

Events are held at locations close to the site that meet Americans with Disabilities Act standards. Public events are always announced in advance using a variety of methods.

Public Participation Grants

Grants may be available to neighborhood committees, non-profits, and other groups interested in the site. For contaminated sites, these funds can be used to:

- Hire an expert to help interpret technical information
- Conduct activities that enhance the public's understanding of, and participation in, the cleanup process

For more information about public participation grants, please contact Laura Busby at 360-280-5088 or laura.busby@ecy.wa.gov and Jill Krumlauf at 360-790-5771 or jill.krumlauf@ecy.wa.gov. You may also visit the [Public Participation Grant website](#).¹⁰

¹⁰ <https://ecology.wa.gov/PPG>

Site Information

Land use

The site is located at 201 Harris Avenue in Bellingham’s Fairhaven neighborhood. The site consists of approximately 5 acres of contaminated soil and groundwater (upland area) and 5 acres of contaminated marine sediment (in-water area).

Shipbuilding activities began in the early 1900s, and in 1966 the Port began leasing to other industrial operations.

The State of Washington and the Port own the property within the site. The Port and the Washington State Department of Natural Resources have a management agreement for the harbor-area parcels, including the aquatic and historical infill lands.

In 1998, the Port began voluntarily investigating sediment at the site. Based on this work, Ecology and the Port entered into a legal agreement (agreed order) in 2003 to complete a comprehensive sediment investigation. In 2010, Ecology and the Port entered into a second agreed order to investigate upland soil and groundwater.



Figure 1: Aerial view of Harris Avenue Shipyard cleanup site



Figure 2: Harris Avenue Shipyard facing north, January 1967; Washington State Archives (<https://www.digitalarchives.wa.gov>)

Cleanup Plans

In February 2021, following public review and comment, Ecology finalized the Cleanup Action Plan (CAP) for the site (upland area and in-water area). The CAP was part of a legal agreement (agreed order) which required the Port to design the cleanup action for the site.

The legal agreement (consent decree) currently available for public review requires the Port to implement the CAP for the upland area of the site. In 2018 an interim action (early partial cleanup) removed and disposed of contaminated soil. As a result, this area meets required cleanup standards. The CAP for the remaining upland area includes the following (see Figure 4 for context):

Upland Area - soil and groundwater cleanup

- **Excavate shallow soil and cap:** Remove 1 to 2 feet of soil and replace with clean soil, gravel, or asphalt.
- **Excavate deeper soil:** Remove or solidify soil as deep as 3 or 4 feet.
- **Restrict land use and conduct maintenance and monitoring:** Ensure the cleanup continues to protect human health and the environment over time.



Figure 3: Harris Avenue Pier before and after the 2018 interim action

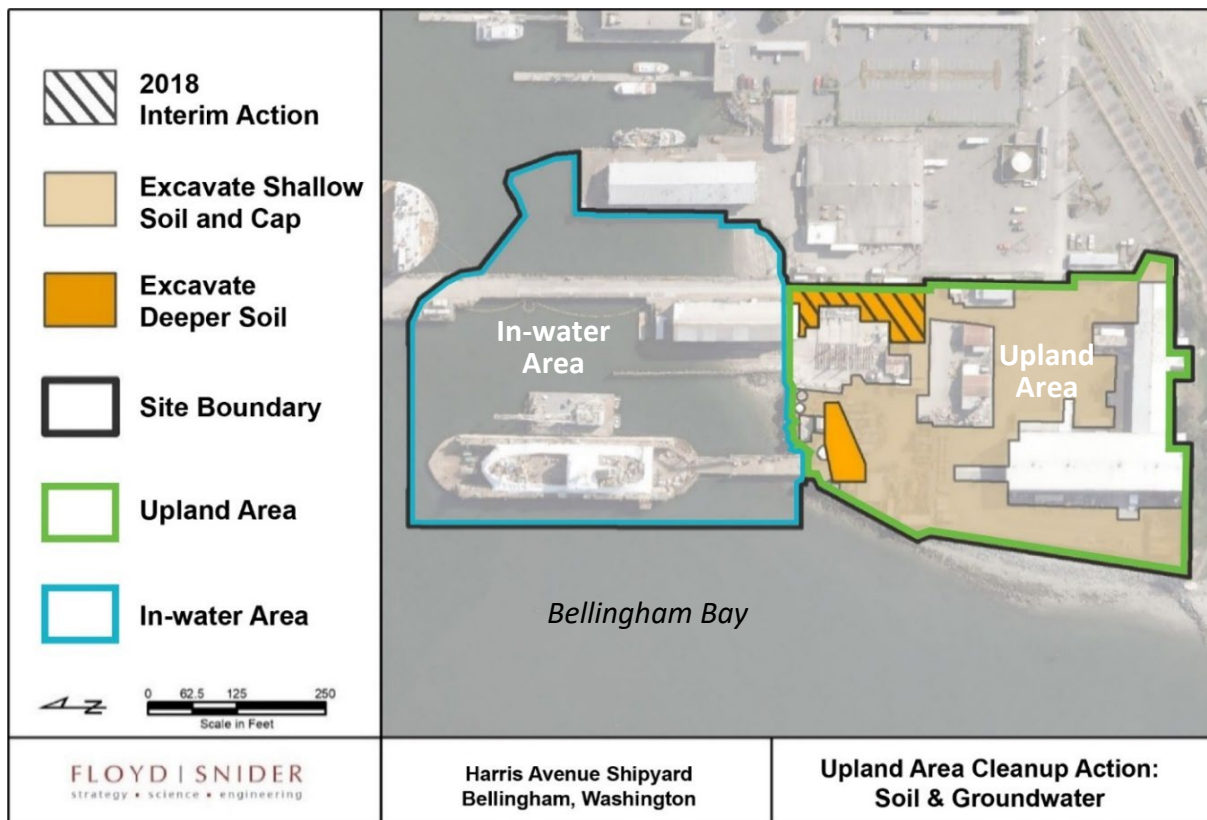


Figure 4: Harris Avenue Shipyard site location and Cleanup Action Plan for the upland area of the site

How the site became contaminated

Investigations conducted by the Port found contamination from former shipbuilding and other historical operations. Contaminants are present in soil, groundwater, and in-water sediment at concentrations that represent a potential threat to human and ecological health. Contaminants include the following:

- **Upland soil and groundwater:** petroleum hydrocarbon compounds and metals
- **In-water sediment:** polychlorinated biphenyls, polycyclic aromatic hydrocarbons, semivolatile organic compounds, and metals

Status of cleanup

In 2025 the Port will clean up the upland area and obtain permits for the in-water area. Ecology expects to issue the legal agreement (amended consent decree for the in-water area) for public review in late 2026. In 2027 the Port will begin the cleanup of the in-water area. The cleanup action to address contamination at the site is expected to take about three years.

Area land use and community

The site is within Bellingham's Fairhaven neighborhood and is zoned for industrial use (see Figure 5). "Industrial areas are intended to provide for a range of potential uses from 'light' industrial uses like research and development to water related industrial uses to 'heavy' industrial uses such as intensive warehousing, manufacturing, fabrication, assembly and distribution of goods. Some commercial uses are allowed in certain areas to allow more flexibility."¹¹ The areas to the south of the site are zoned for public use (see Figure 5).

The Fairhaven was an original pioneer settlement on Bellingham Bay that merged with two others in 1904 to become the City of Bellingham.¹² Fairhaven is comprised of single-family homes, apartments, and condominiums, all within walking distance to many amenities. The Fairhaven National Register Historic District houses 17 historic buildings within the commercial center of Fairhaven. The Bellingham Ferry Terminal is next to the Harris Avenue Shipyard – a cleanup site and an active industrial shipyard.

¹¹ City of Bellingham, "Fairhaven Neighborhood," <https://bellingham.municipal.codes/BMC/20.37.310>

¹² City of Bellingham, "20.37.310 Fairhaven urban village – Establishment of boundaries and land use areas," <https://cob.org/services/planning/neighborhoods/fairhaven-2>

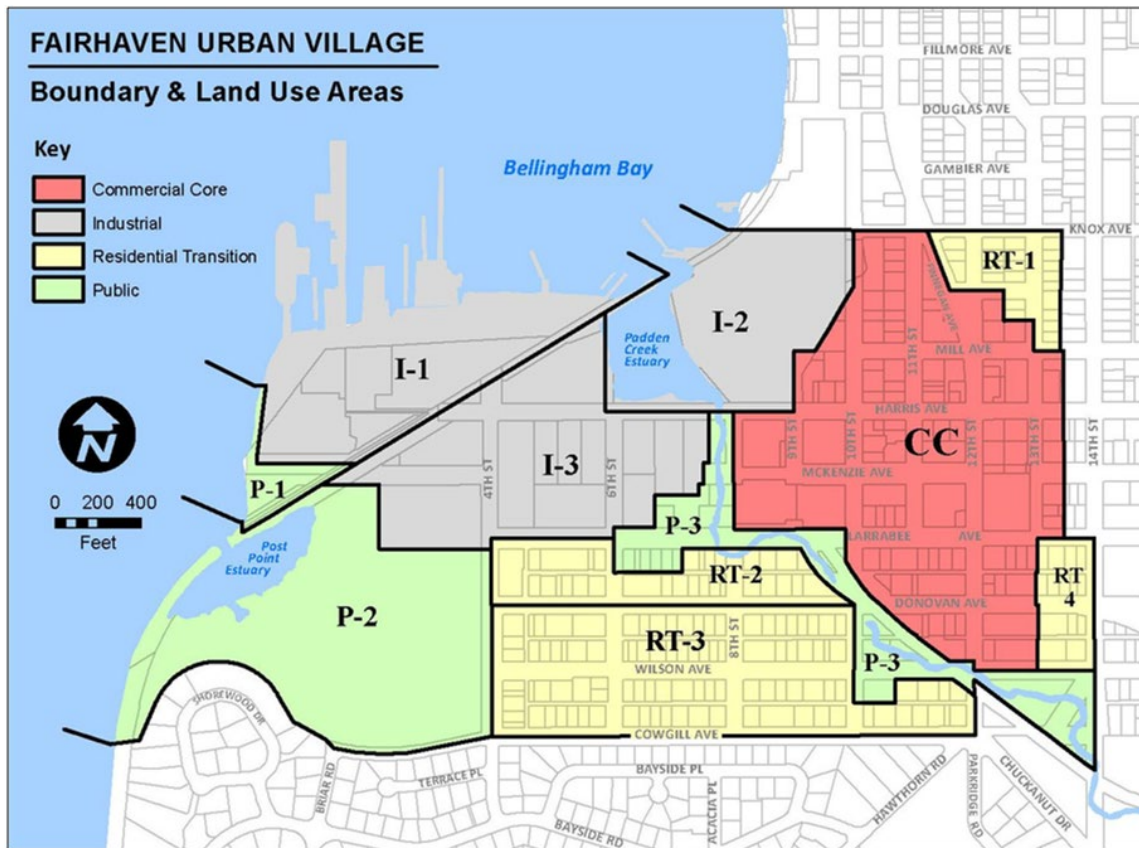


Figure 5: Fairhaven urban village and area boundaries map (see Footnote 11)

Tribal engagement

The Lummi Nation and Nooksack Indian Tribe could be affected by the contamination. The cleanup process may also uncover cultural resources. We will reach out to Tribes to offer opportunities to engage with Ecology in the cleanup process.

Environmental Justice

Ecology utilizes multiple resources to better understand the environmental and demographic information of the communities impacted by cleanup sites. The following environmental justice tools provide information that help our team plan for public outreach.

Washington Environmental Health Disparity Map

The [Washington Environmental Health Disparity Map](https://fortress.wa.gov/doh/wtnibl/WTNIBL/)¹³ evaluates environmental health risk factors in communities.

Ecology does not interpret rankings as absolute values, and we do not use them to diagnose a community health issue or to label a community. Environmental health disparity is ranked on a

¹³ <https://fortress.wa.gov/doh/wtnibl/WTNIBL/>

scale of 1-10 (low to high) and is relative to other locations in the state. The census tract for the Harris Avenue Shipyard site has an environmental health risk ranking of 3 (see Figure 6).

The Washington State Department of Health mapping tool model was “specifically adapted from CalEnviroScreen – a cumulative environmental impacts assessment mapping tool developed by CalEPA and used in California. It estimates a cumulative environmental health impact score for each census tract reflecting pollutant exposures and factors that affect people’s vulnerability to environmental pollution.

The model is based on a conceptual formula of Risk = Threat * Vulnerability, where threat and vulnerability are based on several indicators.

The threat is represented by indicators that account for pollution burden, which is a combination of environmental effects and environmental exposures in communities. Environmental effects include indicators that account for adverse environmental quality generally, even when population contact with an environmental hazard is unknown or uncertain. Environmental exposures include the levels of certain pollutants that populations come into contact with.

Vulnerability is represented by indicators of socioeconomic factors and sensitive populations for which there is clear evidence that they may affect susceptibility or vulnerability to an increased pollution burden. Indicators in socioeconomic factors measure population characteristics that modify the pollution burden itself. Sensitive populations refer to those who are at greater risk due to intrinsic biological vulnerability to environmental stressors.

In the model, threat is multiplied by vulnerability in order to reflect the scientific literature that indicates population characteristics often modify and amplify the impact of pollution exposures on certain vulnerable populations. The rankings help to compare health and social factors that may contribute to disparities in a community.”

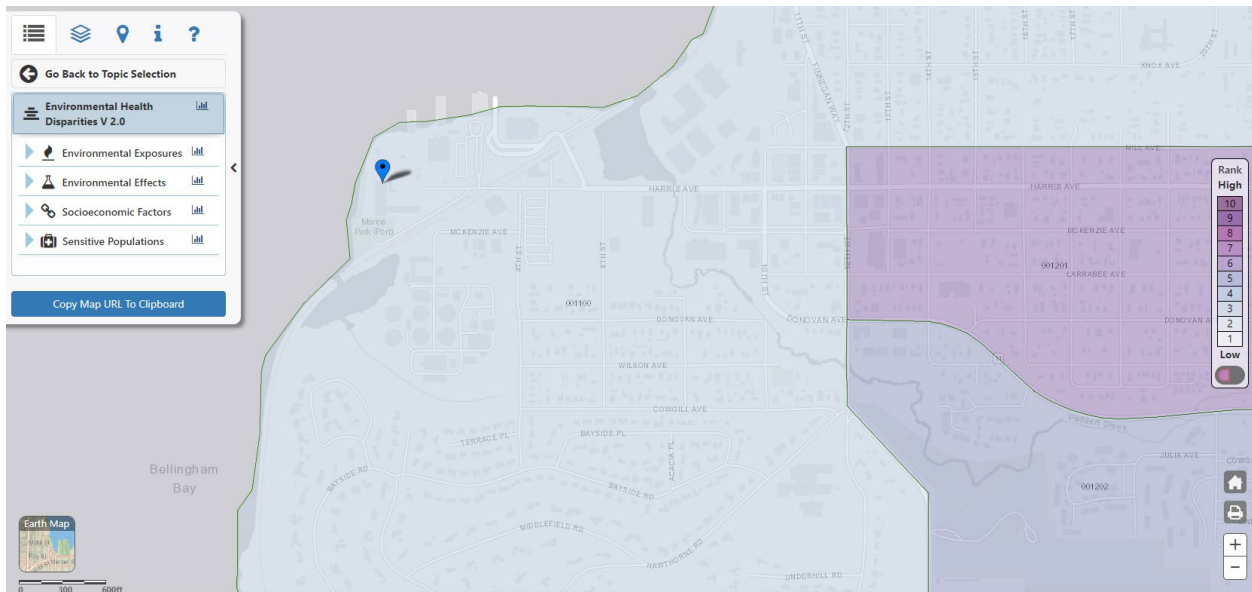


Figure 6: Washington Environmental Health Disparities Map for the Harris Avenue Shipyard site census tract 001100 with an environmental health risk ranking of 3.

EJScreen

The [Environmental Justice Screening and Mapping Tool \(EJScreen\)](https://ejscreen.epa.gov/mapper/index.html)¹⁴ has been developed by the Environmental Protection Agency (EPA). It is based on nationally consistent data and an approach that combines environmental and demographic indicators in maps and reports. Ecology uses this information to tailor its communications to the needs of communities through various means. These include developing language translations and identifying the need for interpreters. Ecology translates materials like fact sheets into languages that are spoken by 5% or more of the local community and considers accommodations when socio-economic indicators are above the EPA 80th percentile in-state threshold.

¹⁴ <https://ejscreen.epa.gov/mapper/index.html>

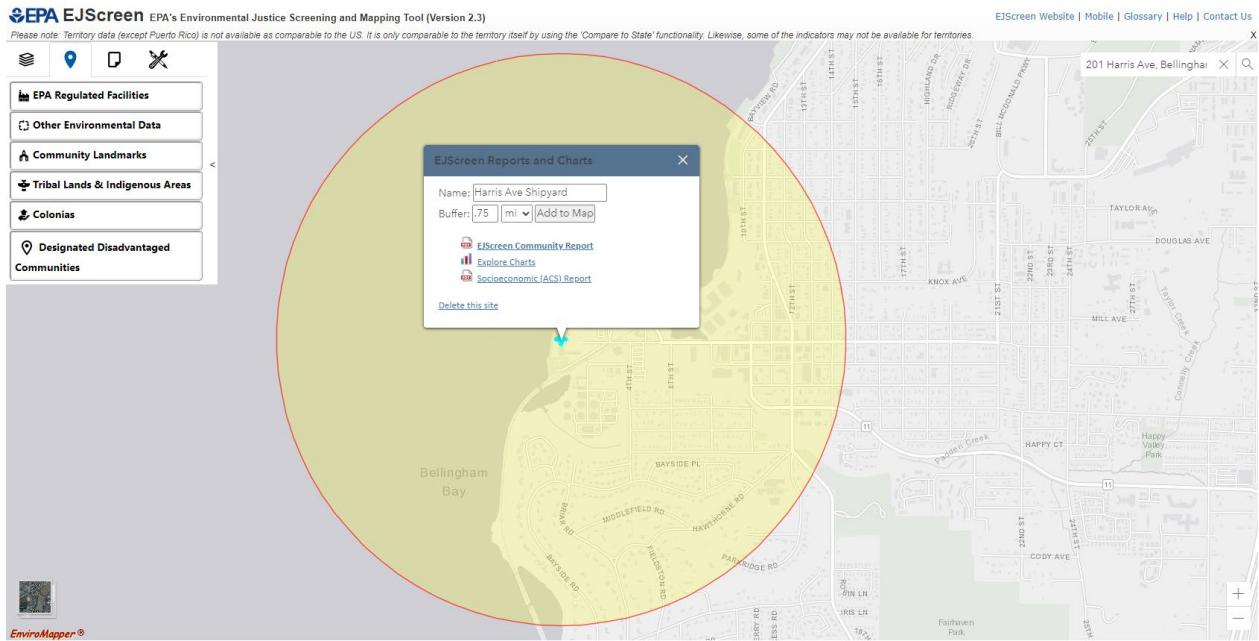


Figure 7: EPA EJScreen generated map of the outreach area for the Harris Avenue Shipyard site

The EJScreen analysis was conducted for a 0.75-mile radius around the site (see Figure 7 and Appendix B). It identified a notable “population over 64 years of age.” Therefore, Ecology will tailor outreach efforts to address their needs. It also identified that 2% of households speak Spanish at home, while none of the households speak English less than very well. In response, fact sheets will include contact information for Spanish speakers to request translation services.

As part of our public involvement efforts, Ecology will reach out to cultural community organizations and provide information in additional languages as needed and in accordance with federal guidance. We welcome input on how to better engage the local community. To request information in another language, call Kristen Forkeutis at 425-240-4353, and an interpreter will be connected.

Washington's Cleanup Laws

Ecology uses the [Model Toxics Control Act \(MTCA\)](#)¹⁵ and accompanying regulations for cleanup activities. Passed in 1989, MTCA provides guidelines for contaminated site cleanup in Washington state. This law sets standards to ensure the cleanup protects human health and the environment. MTCA requires the creation of this plan.

Model Toxics Control Act

MTCA began in 1988 as a citizen-led effort to clean up contaminated sites in Washington state. The law holds property owners or operators responsible for cleaning up contamination on, or coming from, their property.

Ecology carries out MTCA, making sure cleanups happen according to state rules and regulations. These rules are found in [Chapter 173-340 Washington Administrative Code \(WAC\)](#).¹⁶ Ecology investigates reports of contamination, and the property is placed on the [Contaminated Sites List](#),¹⁷ if the pollution is determined to pose a serious risk to human health or the environment. This starts the cleanup process at the site.

The cleanup process under MTCA includes several steps (Appendix A). Public involvement is a key part of MTCA's [cleanup process](#).¹⁸ Nearby residents, businesses, community groups, and other interested parties can review and comment on documents related to steps that make crucial decisions or plans regarding the cleanup.

State Environmental Policy Act

MTCA cleanups also require evaluation under the [State Environmental Policy Act \(SEPA\)](#).¹⁹ Under SEPA, the potential for significant adverse environmental impacts from a project or action must be evaluated by state and local agencies when making decisions. This evaluation is subject to public review and comment in parallel with cleanup documents.

Plan Amendments

Ecology developed this plan following MTCA regulations (WAC 173-340-600). We review it as the cleanup progresses and amend it as necessary. You may suggest amendments to Kristen Forkeutis at 425-240-4353 or Kristen.Forkeutis@ecy.wa.gov.

This plan intends to provide the public with information on opportunities for public involvement and comment. The outreach activities discussed reflect Ecology's current plans to

¹⁵ <https://www.ecology.wa.gov/mtca>

¹⁶ <https://apps.ecology.wa.gov/publications/publications/9406.pdf>

¹⁷ <https://apps.ecology.wa.gov/cleanupsearch/reports/cleanup/contaminated>

¹⁸ <https://ecology.wa.gov/MTCA-process>

¹⁹ <https://app.leg.wa.gov/WAC/default.aspx?cite=197-11>

keep the public informed. It also provides ways for those interested in the site to communicate their concerns and questions to us.

If you feel the planned outreach activities and mechanisms found in this plan are insufficient or would like to modify them in some way, please contact us. We will work to find solutions. We can implement new activities or outreach tools right away, with or without amending this plan.

Appendices

Appendix A. Steps in the MTCA cleanup process

The cleanup process is defined in the Model Toxics Control Act (MTCA), Washington's cleanup law. See the accessible PDF for details.

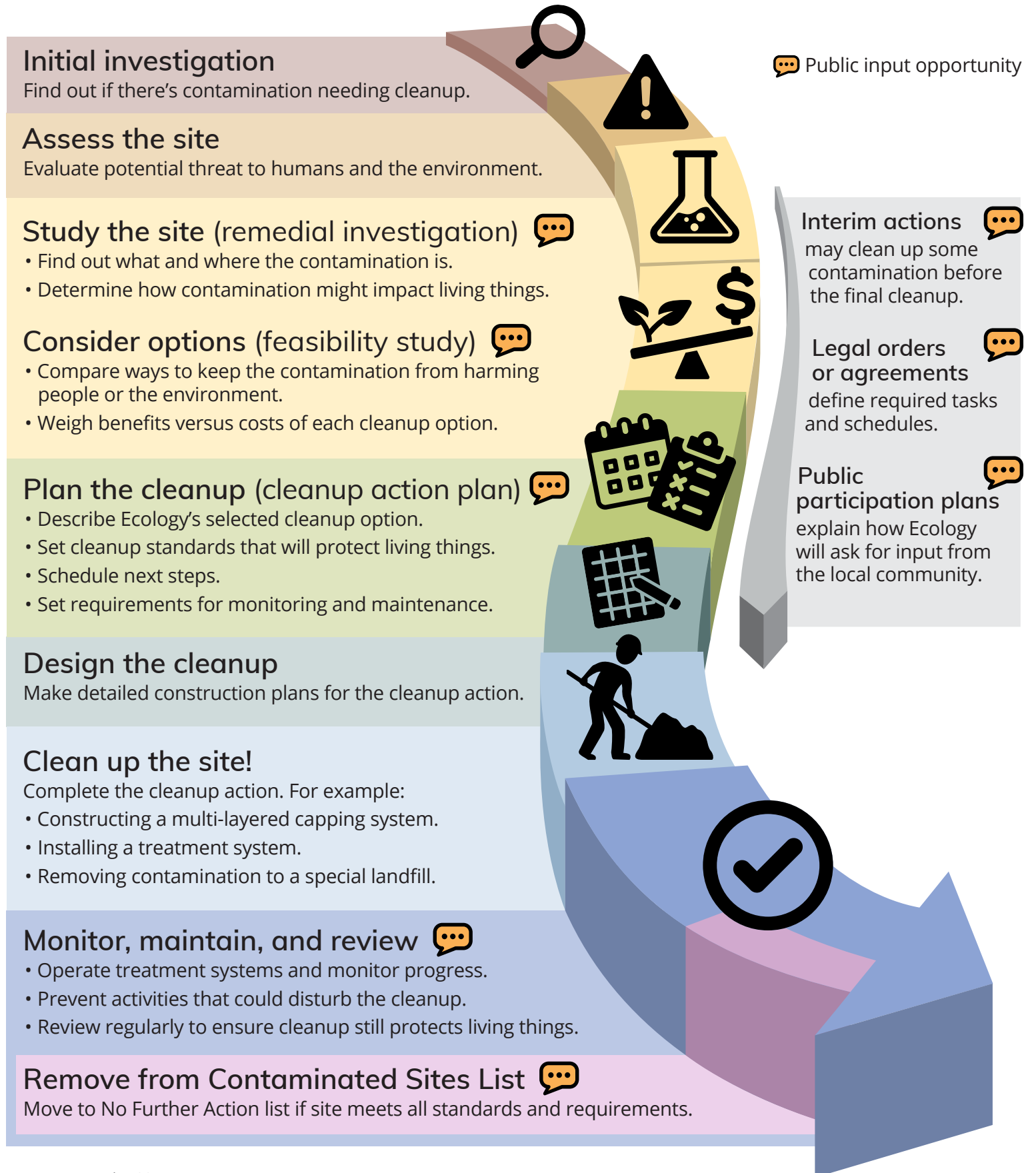
Appendix B. EPA EJScreen Community Report & ACS Summary Report

EPA's EJScreen reports for a .75-mile radius around the Harris Avenue Shipyard site.

Washington's Cleanup Process



Public participation plans and comment periods are only required for cleanups under a legal agreement with Ecology. Otherwise, all cleanups follow the same steps. The steps are defined by Washington's cleanup law, the Model Toxics Control Act.

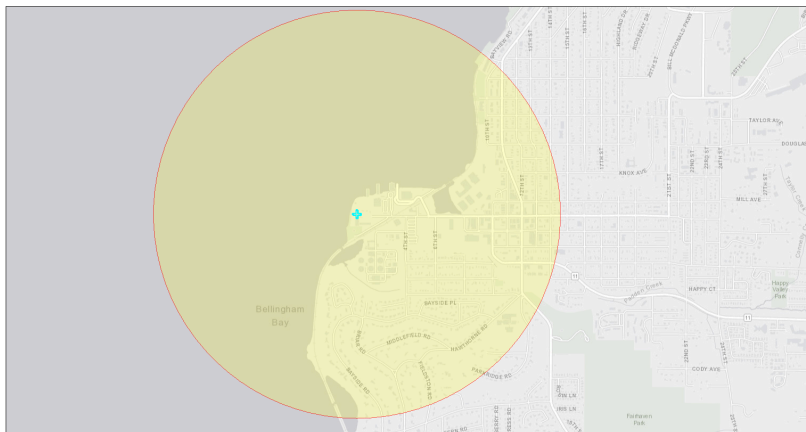


EJScreen Community Report

This report provides environmental and socioeconomic information for user-defined areas, and combines that data into environmental justice and supplemental indexes.

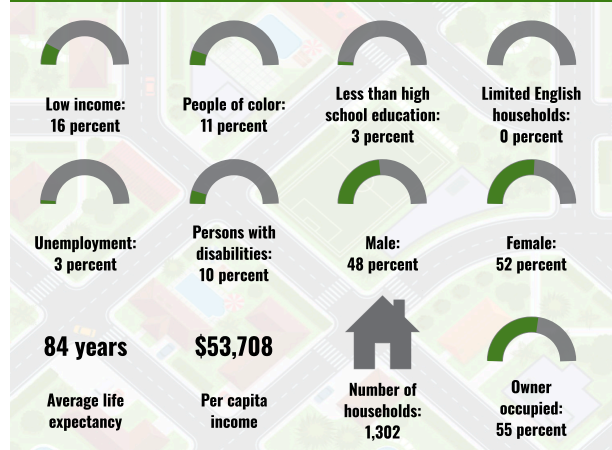
Harris Ave Shipyard

.75 miles Ring Centered at 48.720244,-122.515497
 Population: 2,345
 Area in square miles: 1.77

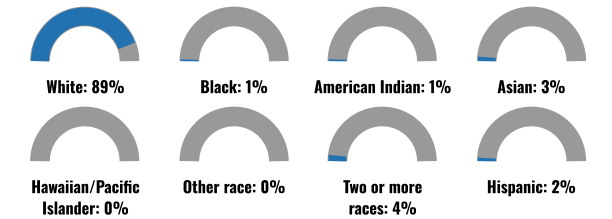


December 18, 2024
 Harris Ave Shipyard
 1:18,056
 0 0.15 0.3 0.45 0.6 mi
 0 0.23 0.45 0.9 km
Esri, HERE, City of Bellingham, Bureau of Land Management, Esri, HERE, DeLorme, GeoTechnology, Inc., USGS, EPA, Swire

COMMUNITY INFORMATION



BREAKDOWN BY RACE



BREAKDOWN BY AGE



LIMITED ENGLISH SPEAKING BREAKDOWN



Notes: Numbers may not sum to totals due to rounding. Hispanic population can be of any race. Source: U.S. Census Bureau, American Community Survey (ACS) 2018-2022. Life expectancy data comes from the Centers for Disease Control.

LANGUAGES SPOKEN AT HOME

LANGUAGE	PERCENT
English	92%
Spanish	2%
Other Indo-European	1%
Korean	1%
Chinese (including Mandarin, Cantonese)	1%
Vietnamese	1%
Other Asian and Pacific Island	1%
Total Non-English	8%

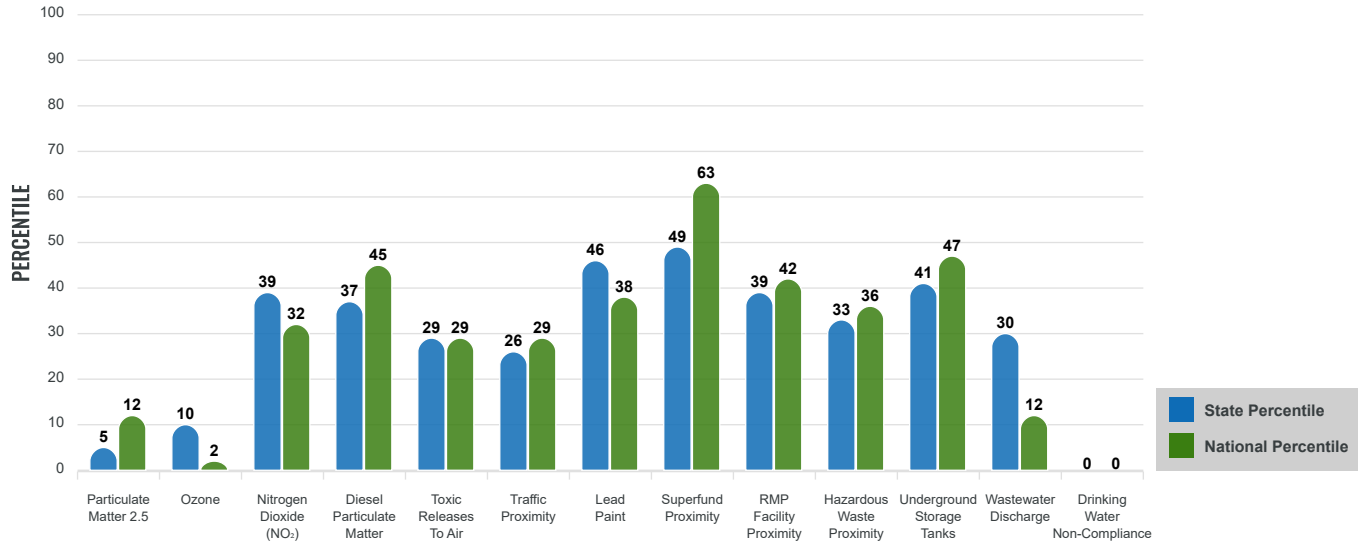
Environmental Justice & Supplemental Indexes

The environmental justice and supplemental indexes are a combination of environmental and socioeconomic information. There are thirteen EJ indexes and supplemental indexes in EJScreen reflecting the 13 environmental indicators. The indexes for a selected area are compared to those for all other locations in the state or nation. For more information and calculation details on the EJ and supplemental indexes, please visit the [EJScreen website](#).

EJ INDEXES

The EJ indexes help users screen for potential EJ concerns. To do this, the EJ index combines data on low income and people of color populations with a single environmental indicator.

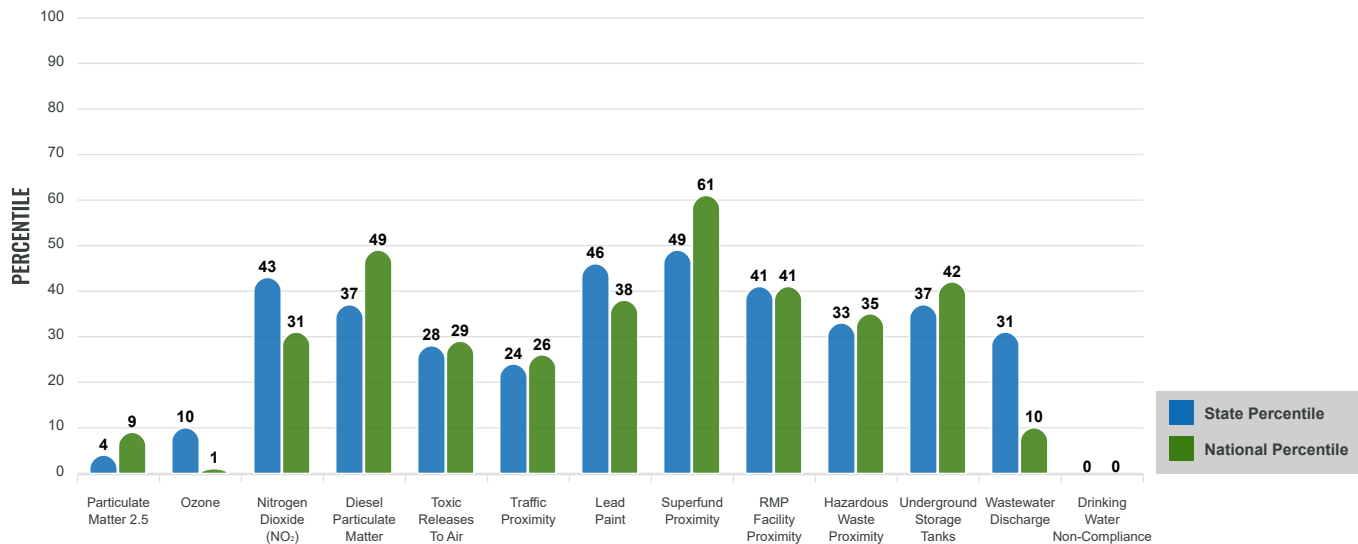
EJ INDEXES FOR THE SELECTED LOCATION



SUPPLEMENTAL INDEXES

The supplemental indexes offer a different perspective on community-level vulnerability. They combine data on percent low income, percent persons with disabilities, percent less than high school education, percent limited English speaking, and percent low life expectancy with a single environmental indicator.

SUPPLEMENTAL INDEXES FOR THE SELECTED LOCATION



Report for .75 miles Ring Centered at 48.720244,-122.515497

Report produced December 18, 2024 using EJScreen Version 2.3

EJScreen Environmental and Socioeconomic Indicators Data

SELECTED VARIABLES	VALUE	STATE AVERAGE	PERCENTILE IN STATE	USA AVERAGE	PERCENTILE IN USA
ENVIRONMENTAL BURDEN INDICATORS					
Particulate Matter 2.5 ($\mu\text{g}/\text{m}^3$)	6.73	9.51	6	8.45	13
Ozone (ppb)	49.7	51.8	13	61.8	1
Nitrogen Dioxide (NO ₂) (ppbv)	6.9	6.3	62	7.8	43
Diesel Particulate Matter ($\mu\text{g}/\text{m}^3$)	0.229	0.256	48	0.191	71
Toxic Releases to Air (toxicity-weighted concentration)	430	1,800	42	4,600	44
Traffic Proximity (daily traffic count/distance to road)	470,000	1,200,000	33	1,700,000	38
Lead Paint (% Pre-1960 Housing)	0.34	0.23	73	0.3	61
Superfund Proximity (site count/km distance)	0.2	0.53	57	0.39	70
RMP Facility Proximity (facility count/km distance)	0.38	0.51	55	0.57	57
Hazardous Waste Proximity (facility count/km distance)	1.3	2.9	47	3.5	50
Underground Storage Tanks (count/km ²)	3.6	6.1	63	3.6	73
Wastewater Discharge (toxicity-weighted concentration/m distance)	0.079	300	42	700000	14
Drinking Water Non-Compliance (points)	0	1	0	2.2	0
SOCIOECONOMIC INDICATORS					
Demographic Index USA	0.55	N/A	N/A	1.34	17
Supplemental Demographic Index USA	0.92	N/A	N/A	1.64	12
Demographic Index State	0.73	1.47	16	N/A	N/A
Supplemental Demographic Index State	0.74	1.37	14	N/A	N/A
People of Color	11%	33%	12	40%	22
Low Income	16%	23%	42	30%	30
Unemployment Rate	3%	5%	46	6%	46
Limited English Speaking Households	0%	4%	50	5%	57
Less Than High School Education	3%	8%	30	11%	23
Under Age 5	0%	5%	9	5%	12
Over Age 64	27%	17%	85	18%	83

*Diesel particulate matter index is from the EPA's Air Toxics Data Update, which is the Agency's ongoing, comprehensive evaluation of air toxics in the United States. This effort aims to prioritize air toxics, emission sources, and locations of interest for further study. It is important to remember that the air toxics data presented here provide broad estimates of health risks over geographic areas of the country, not definitive risks to specific individuals or locations. More information on the Air Toxics Data Update can be found at: <https://www.epa.gov/haps/air-toxics-data-update>.

Sites reporting to EPA within defined area:

Superfund	0
Hazardous Waste, Treatment, Storage, and Disposal Facilities	0
Water Dischargers	8
Air Pollution	3
Brownfields	0
Toxic Release Inventory	1

Other community features within defined area:

Schools	1
Hospitals	0
Places of Worship	3

Other environmental data:

Air Non-attainment	No
Impaired Waters	Yes

Selected location contains American Indian Reservation Lands*	No
Selected location contains a "Justice40 (CEJST)" disadvantaged community	No
Selected location contains an EPA IRA disadvantaged community	No

Report for .75 miles Ring Centered at 48.720244,-122.515497

Report produced December 18, 2024 using EJScreen Version 2.3

EJScreen Environmental and Socioeconomic Indicators Data

HEALTH INDICATORS

INDICATOR	VALUE	STATE AVERAGE	STATE PERCENTILE	US AVERAGE	US PERCENTILE
Low Life Expectancy	13%	18%	5	20%	4
Heart Disease	5.3	4.8	64	5.8	41
Asthma	10.4	10.9	27	10.3	55
Cancer	8.1	6.5	84	6.4	84
Persons with Disabilities	10.1%	13.4%	31	13.7%	30

CLIMATE INDICATORS

INDICATOR	VALUE	STATE AVERAGE	STATE PERCENTILE	US AVERAGE	US PERCENTILE
Flood Risk	6%	11%	51	12%	45
Wildfire Risk	0%	12%	0	14%	0

CRITICAL SERVICE GAPS

INDICATOR	VALUE	STATE AVERAGE	STATE PERCENTILE	US AVERAGE	US PERCENTILE
Broadband Internet	3%	8%	35	13%	23
Lack of Health Insurance	2%	6%	14	9%	13
Housing Burden	Yes	N/A	N/A	N/A	N/A
Transportation Access Burden	Yes	N/A	N/A	N/A	N/A
Food Desert	No	N/A	N/A	N/A	N/A

Report for .75 miles Ring Centered at 48.720244,-122.515497

Report produced December 18, 2024 using EJScreen Version 2.3

Location: User-specified point center at 48.720244, -122.515497
 Ring (buffer): .75-miles radius
 Description: Harris Ave Shipyard

Summary of ACS Estimates		2018 - 2022
Population		2,345
Population Density (per sq. mile)		10,588
People of Color Population		250
% People of Color Population		11%
Households		1,302
Housing Units		1,501
Housing Units Built Before 1950		386
Per Capita Income		53,708
Land Area (sq. miles) (Source: SF1)		0.22
% Land Area		15%
Water Area (sq. miles) (Source: SF1)		1.27
% Water Area		85%

	2018 - 2022 ACS Estimates	Percent	MOE (±)
Population by Race			
Total	2,345	100%	761
Population Reporting One Race	2,240	96%	971
White	2,125	91%	748
Black	14	1%	33
American Indian	20	1%	54
Asian	69	3%	71
Pacific Islander	1	0%	13
Some Other Race	12	1%	52
Population Reporting Two or More Races	105	4%	123
Total Hispanic Population	47	2%	62
Total Non-Hispanic Population	2,298		
White Alone	2,095	89%	748
Black Alone	14	1%	33
American Indian Alone	20	1%	54
Non-Hispanic Asian Alone	69	3%	71
Pacific Islander Alone	1	0%	13
Other Race Alone	0	0%	13
Two or More Races Alone	99	4%	123
Population by Sex			
Male	1,128	48%	489
Female	1,217	52%	302
Population by Age			
Age 0-4	7	0%	38
Age 0-17	216	9%	88
Age 18+	2,130	91%	448
Age 65+	637	27%	193

Data Note: Detail may not sum to totals due to rounding. Hispanic population can be of any race.

N/A means not available. **Source:** U.S. Census Bureau, American Community Survey (ACS) 2018 - 2022

Location: User-specified point center at 48.720244, -122.515497
 Ring (buffer): .75-miles radius
 Description: Harris Ave Shipyard

	2018 - 2022 ACS Estimates	Percent	MOE (±)
Population 25+ by Educational Attainment			
Total	1,791	100%	702
Less than 9th Grade	12	1%	46
9th - 12th Grade, No Diploma	35	2%	193
High School Graduate	97	5%	89
Some College, No Degree	244	14%	101
Associate Degree	288	16%	127
Bachelor's Degree or more	1,114	62%	352
Population Age 5+ Years by Ability to Speak English			
Total	2,339	100%	760
Speak only English	2,160	92%	729
Non-English at Home ¹⁺²⁺³⁺⁴	179	8%	112
¹ Speak English "very well"	170	7%	112
² Speak English "well"	5	0%	57
³ Speak English "not well"	4	0%	49
⁴ Speak English "not at all"	0	0%	45
³⁺⁴ Speak English "less than well"	4	0%	66
²⁺³⁺⁴ Speak English "less than very well"	9	0%	85
Limited English Speaking Households*			
Total	5	100%	32
Speak Spanish	0	0%	13
Speak Other Indo-European Languages	5	100%	23
Speak Asian-Pacific Island Languages	0	0%	13
Speak Other Languages	0	0%	13
Households by Household Income			
Household Income Base	1,302	100%	290
< \$15,000	90	7%	97
\$15,000 - \$25,000	46	4%	51
\$25,000 - \$50,000	187	14%	116
\$50,000 - \$75,000	154	12%	148
\$75,000 +	825	63%	263
Occupied Housing Units by Tenure			
Total	1,302	100%	290
Owner Occupied	719	55%	262
Renter Occupied	583	45%	207
Employed Population Age 16+ Years			
Total	2,166	100%	736
In Labor Force	1,318	61%	691
Civilian Unemployed in Labor Force	38	3%	41
Not In Labor Force	848	39%	266

Data Note: Detail may not sum to totals due to rounding. Hispanic population can be of anyrace.

N/A means not available. **Source:** U.S. Census Bureau, American Community Survey (ACS)

*Households in which no one 14 and over speaks English "very well" or speaks English only.

Location: User-specified point center at 48.720244, -122.515497

Ring (buffer): .75-miles radius

Description: Harris Ave Shipyard

	2018 - 2022 ACS Estimates	Percent	MOE (±)
Population by Language Spoken at Home*			
Total (persons age 5 and above)	2,596	100%	496
English	2,392	92%	468
Spanish	41	2%	78
French, Haitian, or Cajun	12	0%	29
German or other West Germanic	12	0%	28
Russian, Polish, or Other Slavic	0	0%	13
Other Indo-European	33	1%	57
Korean	27	1%	63
Chinese (including Mandarin, Cantonese)	34	1%	74
Vietnamese	19	1%	45
Tagalog (including Filipino)	0	0%	13
Other Asian and Pacific Island	25	1%	52
Arabic	0	0%	13
Other and Unspecified	0	0%	13
Total Non-English	204	8%	682

Data Note: Detail may not sum to totals due to rounding. Hispanic population can be of any race.
N/A means not available. **Source:** U.S. Census Bureau, American Community Survey (ACS) 2018 - 2022.
*Population by Language Spoken at Home is available at the census tract summary level and up.