

Tacoma Smelter Plume 2018 Yard Program

December 11th, 2018
Vashon Public Library



Topics

- Timeline
- Prepare yard area
- Maintain access
- Safety
- Homeowner Responsibilities
- Project Line



Yard Program

- Existing residential
- State-led
- Voluntary

- Arsenic action level
= 100 ppm
- Lead action level
= 500 ppm

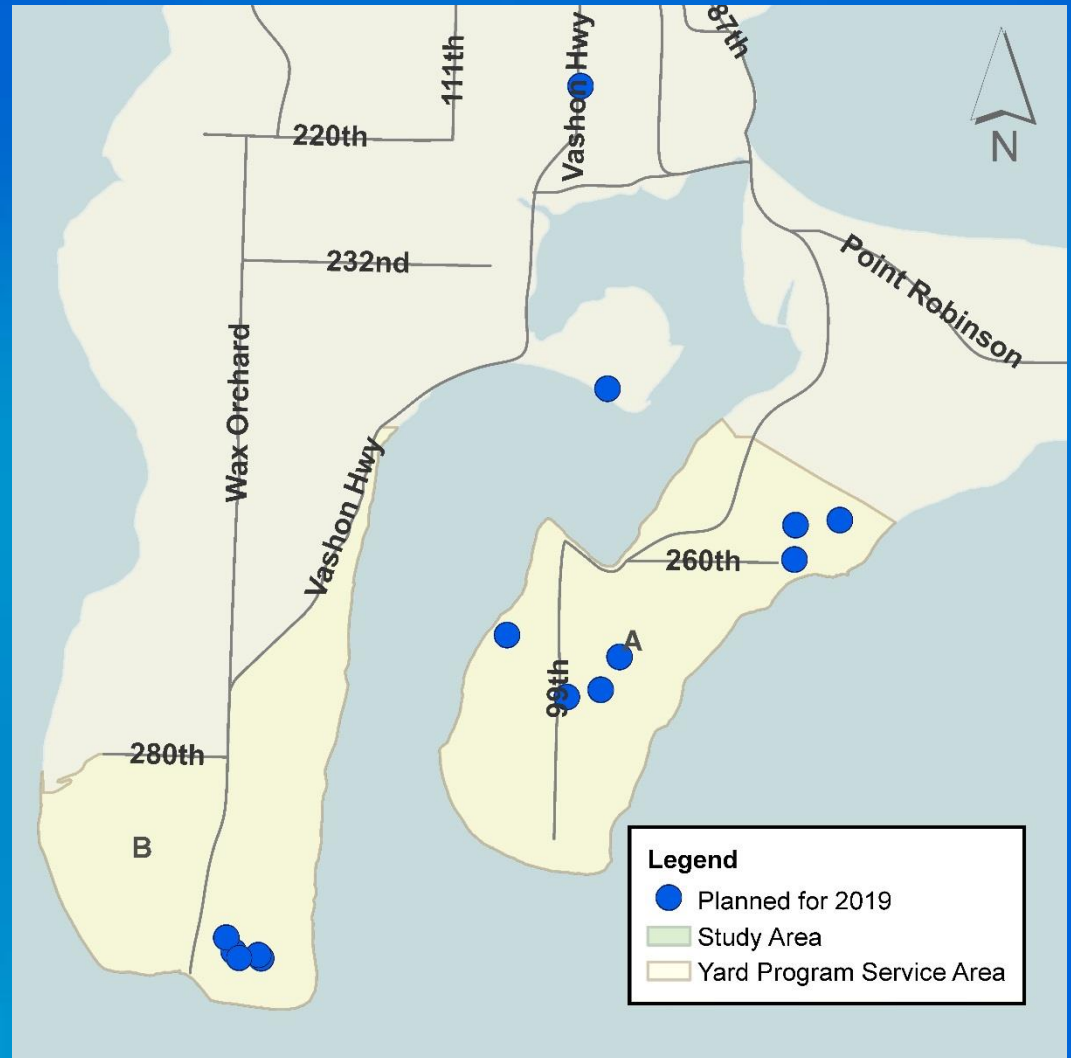


Soil Replacement– Vashon Island

Completed:
2013-2016

Total-21 yards

Upcoming:
2019 - ~14 yards



Map as of 12/04/2018

2019



Map as of 12/04/2018

Prepare Yard

Clear personal items:

- Children's play equipment
- Lawn furniture
- Potted plants
- Gardening tools
- Other misc. items



What to expect during construction

Work Hours:

- 8:00 am-5:00 pm
- Monday through Friday
- * Saturdays with permission from Ecology



Traffic and Noise

- Trucks & equipment
- Construction noise
- Cars parked on roads
- Restricted access



Maintain Access

- Driveways
- Side yards
- Gates
- Alley

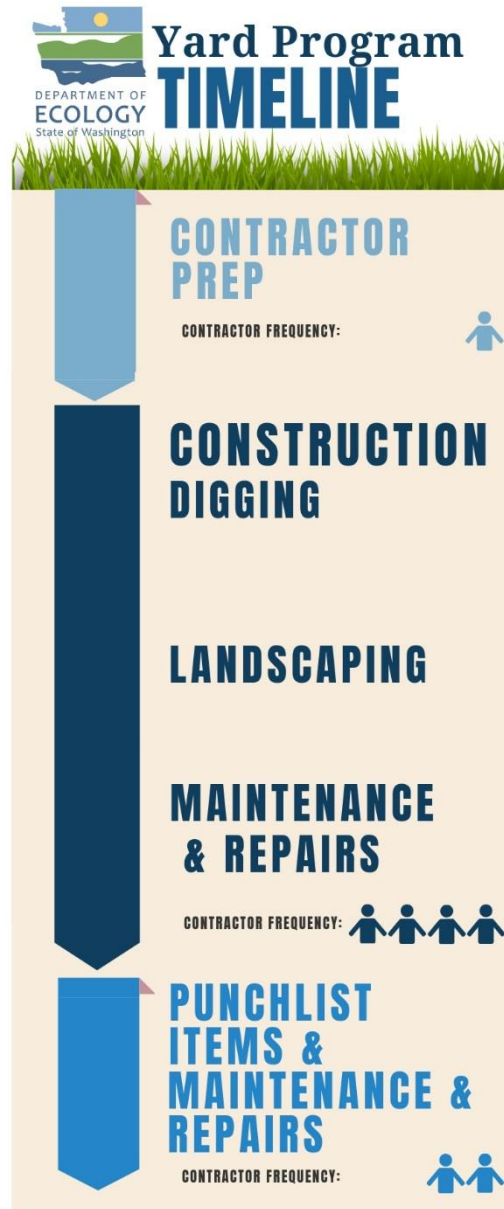


Safety

- Make accommodations for pets.
- Stay out of fenced area and off equipment.
- Call us immediately if you have any safety concerns.



Contractor Timeline



<http://ecology.wa.gov/Tacoma-smelter>

Ecology Field Staff

Charissa Young
Construction
Manager



Chris Huff
Construction
Manager

Mathew Kogle
Field Oversight
Coordinator



Jackson Barnes
Field Oversight
Coordinator

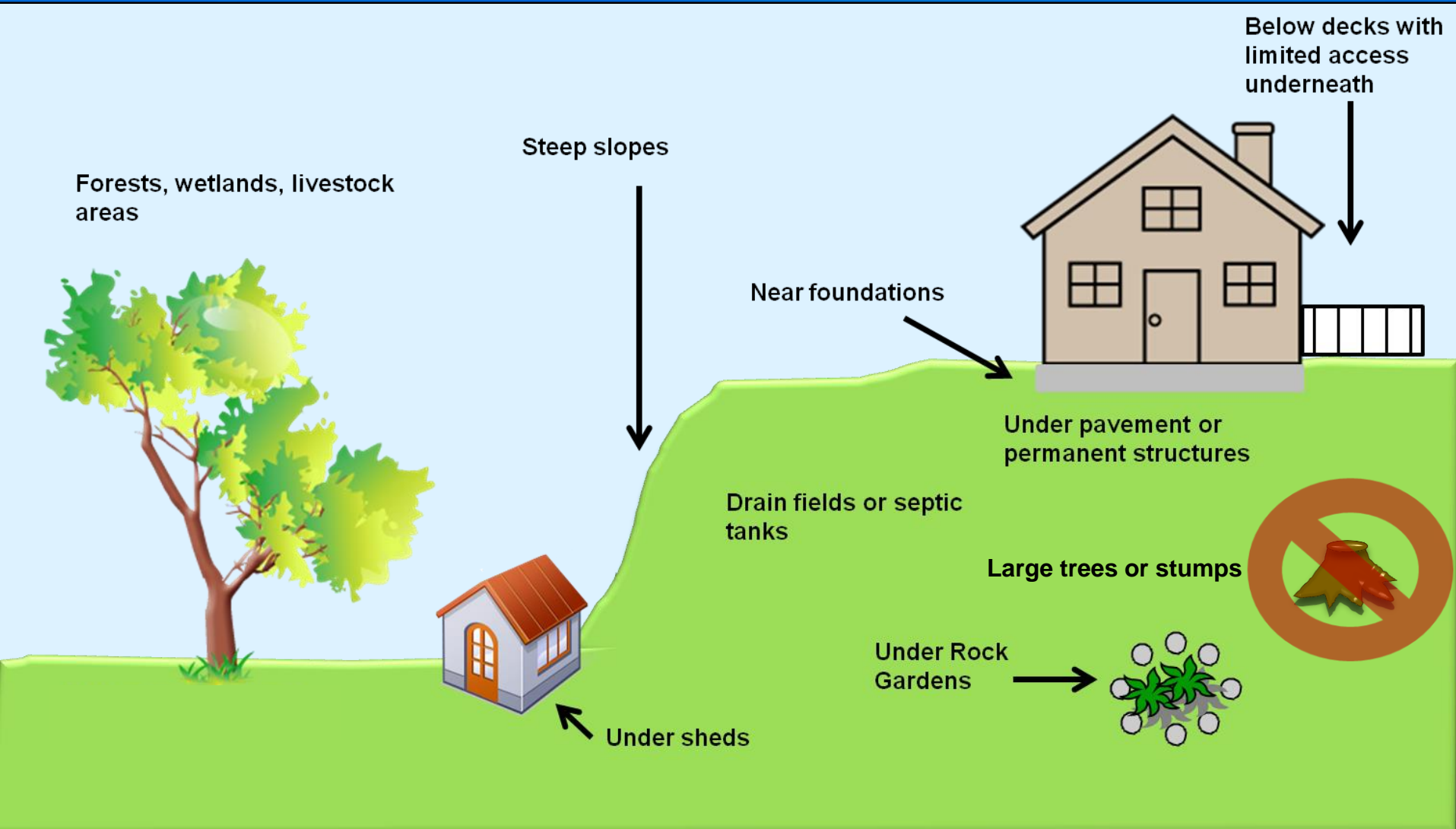
Soil Replacement Process



Soil Replacement Process



Areas that are Excluded



Setbacks

We set-back from:

- Underground storage tanks
- Retaining walls
- Driveways & pathways
- Fences
- Utilities
- Shrubs & plants



Sprinkler Systems

- The contractor is required to protect or restore your sprinkler to pre-construction, working order.



Landscape Restoration



Lawn and Landscape Care



Call Ecology if you see any of the following:

(360) 407-7688, press 2 for Tacoma Smelter Plume

Puddles on grass

Check for puddles that last more than 48 hours after a large rain event.



Soft or settled soil

After winter rains, check for settled or uneven soil that is softer than the rest of the yard.



60 days



New lawn is planted



Contractor cares for landscape and lawn.

Homeowner cares for landscape and lawn.

Lawn and Landscape Care



Please call us ...

- Dust in the air
- Trash pick-up blocked
- Schedule
- Contractor's actions



Project Line:

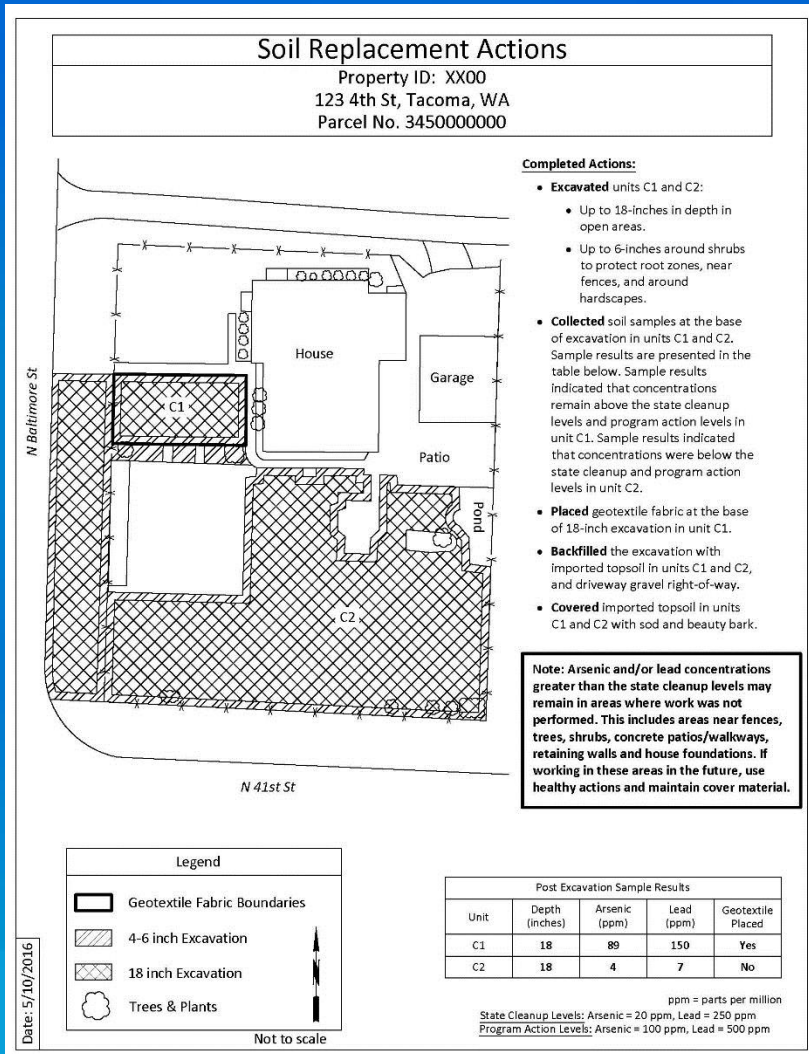
(360) 407-7688

Press 2 for Tacoma Smelter Plume

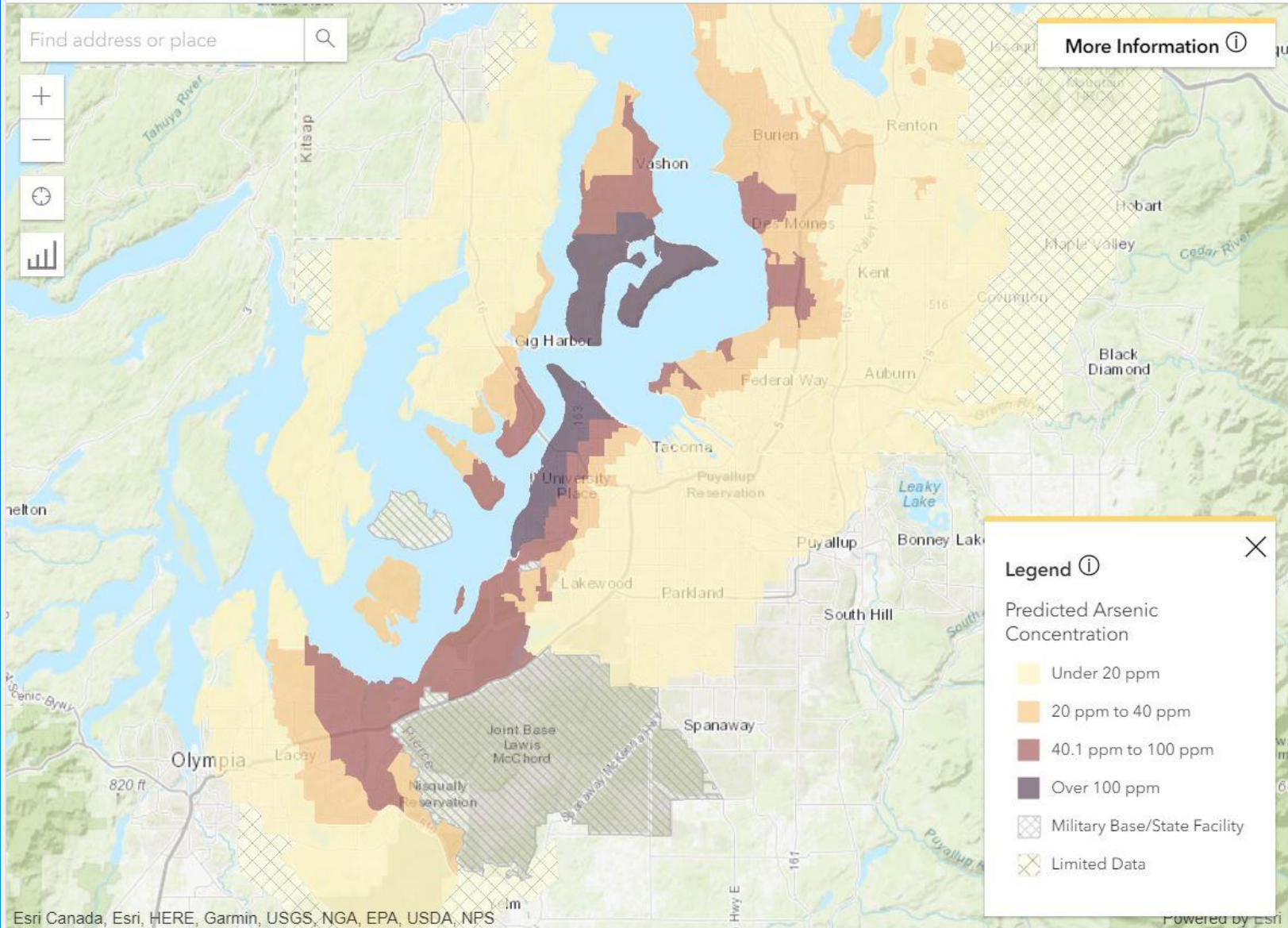
Staff will return calls within 1 business day



Completion Packet



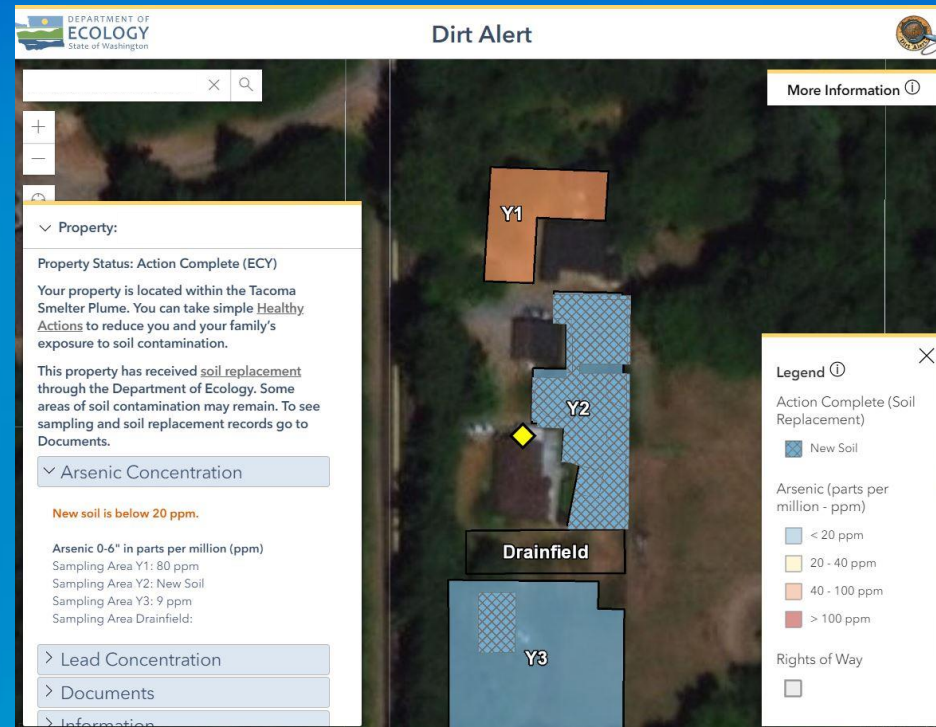
- Mailed to homeowner and put on public database



Public Database: Dirt Alert

Public Documents:

- Soil sampling map & letter with results
- Soil replacement documentation
- Out of program letters



www.apps.ecology.wa.gov/dirtalert/

Health Questions



Contact

Denise Sharify

Email: Denise.Sharify@kingcounty.gov

Phone: (206) 263-1399

Website: www.dirtalert.info



Healthy Actions



Questions?



DEPARTMENT OF
ECOLOGY
State of Washington

Contact

Charissa Young, Construction Manager

Email: Charissa.Young@ecy.wa.gov

Phone: (360) 407-6249

Amy Hargrove, Remediation Manager

Email: Amy.Hargrove@ecy.wa.gov

Phone: (360) 407-6262

Website: <http://ecology.wa.gov/Tacoma-smelter>



DEPARTMENT OF
ECOLOGY
State of Washington

Questions?