

T E C H N I C A L M E M O R A N D U M

TO: Jerome Cruz—Washington State Department of Ecology

cc: Rob Howie—South Park Property Development, L.L.C.
Robert de la Llata—South Park Property Development, L.L.C.
Sheila Strehle—Seattle Public Utilities
Jeff Neuner—Seattle Public Utilities
Joe Hicker—King County
Clifford T. Schmitt—Farallon Consulting, L.L.C.

FROM: Russell Luiten, P.E., Project Engineer
Thaddeus J. Cline, P.E., L.G., L.H.G., Principal Civil Engineer/Hydrogeologist

DATE: April 4, 2017

RE: **LANDFILL GAS COLLECTION AND CONTROL SYSTEM
INTERIM ACTION SUMMARY REPORT—2016
SPPD PROPERTY
SOUTH PARK LANDFILL SITE
SEATTLE, WASHINGTON
FARALLON PN: 408-002**

Farallon Consulting, L.L.C. (Farallon) prepared this technical memorandum to describe the operation of the interim action landfill gas collection and control system (LFGCCS) during 2016 on behalf of South Park Property Development, L.L.C. (SPPD). This technical memorandum is issued to satisfy the requirements for annual interim action progress reporting for the SPPD LFGCCS specified in the *Interim Action Work Plan, South Park Landfill Site, Seattle, Washington* dated February 22, 2013, prepared by Farallon for SPPD (Interim Action Work Plan); and the *Interim Action Compliance Monitoring Plan, Appendix C of the Interim Action Work Plan, South Park Landfill Site, Seattle, Washington* dated February 22, 2013, prepared by Farallon for SPPD (IACMP). The *SPPD Property Landfill Gas Collection and Control System Operation, Maintenance, and Monitoring Plan, South Park Landfill Site, Seattle, Washington* dated June 7, 2016, prepared by Farallon for SPPD (OMMP) provides details for LFGCCS operation, maintenance, and monitoring.

This technical memorandum summarizes LFGCCS operation activities over the course of 2016. LFGCCS operations prior to 2016 are summarized in the technical memorandum regarding Landfill Gas Collection and Control System Interim Action Progress Report—2015, SPPD



Property, South Park Landfill Site, Seattle, Washington dated May 10, 2016, from Thaddeus J. Cline of Farallon to Jerome Cruz of the Washington State Department of Ecology (Ecology) (2015 Annual Report).

BACKGROUND

An interim action, consisting of landfill gas control, surface water control, landfill capping, and institutional controls, was conducted under terms of an amendment to Agreed Order No. 6706 and the Washington State Model Toxics Control Act Cleanup Regulation (MTCA) as established in Chapter 173-340 of the Washington Administrative Code (WAC 173-340), specifically WAC 173-340-430 (Interim Action). The amendment to Agreed Order No. 6706, with the Interim Action Work Plan attached as Exhibit E, was executed by Seattle Public Utilities, SPPD, and Ecology with an effective date of June 6, 2013. The Interim Action was conducted to reduce the threat to human health or the environment by eliminating or substantially reducing one or more pathways for exposure to hazardous substances at a 19.4-acre portion of the closed 39-acre South Park Landfill in Seattle, Washington (King County Tax Parcel No. 3224049005) (herein referred to as the SPPD Property) (Figures 1 and 2). The area at which the Interim Action is being conducted includes the SPPD Property and those areas contiguous with the SPPD Property where buried mixed municipal solid waste (MMSW) extends beneath City of Seattle rights-of-way along 5th Avenue South and South Sullivan Street to the east and south of the SPPD Property, respectively, as shown in relation to the properties comprising the South Park Landfill in Figure 2 (Interim Action Area).

The Interim Action was conducted in advance of cleanup of the South Park Landfill, which is defined as the area where hazardous substances deposited, disposed of, or placed at the South Park Landfill have come to be located; and is referred to as the South Park Landfill Site in this document and prior SPPD documents. SPPD and the City of Seattle were identified by Ecology as potentially liable persons for the South Park Landfill Site.

As documented in the *Interim Action Construction Completion Report, South Park Landfill Site, Seattle, Washington* dated August 14, 2015, prepared by Farallon for SPPD, the LFGCCS was installed between June and December 2014 and operation commenced on December 17, 2014. The landfill cap and stormwater control elements of the Interim Action were constructed between April 2014 and April 2015. The LFGCCS was designed to capture landfill gas generated by MMSW disposed of at the Interim Action Area.

The LFGCCS extracts landfill gas from a system of 77 horizontal and vertical landfill gas collectors with a 10-horsepower blower and was run at start-up with an extraction rate for the system of 220 standard cubic feet per minute (scfm) under a vacuum of 3.5 inches of water. As described in the *Engineering Design Report, Landfill Gas Collection and Control System, South Park Landfill Site, Seattle, Washington* dated June 19, 2015, prepared by Farallon for SPPD, the design extraction rate was up to approximately 5 scfm per collector. Based on computer modeling, the methane generation rate for the MMSW disposed of at the Interim Action Area was estimated to be approximately 15 scfm in 2014, diminishing to approximately 6 scfm by 2034.



SUMMARY OF 2016 OPERATIONS

As discussed in the 2015 Annual Report, monitoring conducted per the IACMP and OMMP since start-up indicates that the LFGCCS can control methane to meet the LFGCCS Minimum Functional Standards (MFS)¹ operational goal². The LFGCCS was monitored quarterly in 2016 and system adjustments were periodically made to satisfy compliance monitoring criteria³ based on methane concentrations in select landfill gas probes around the perimeter of the Interim Action Area (Perimeter Probes⁴) and based on levels of residual nitrogen⁵ in landfill gas collectors. The operational goal and compliance monitoring criteria for operation of the LFGCCS are further discussed in the OMMP.

As indicated in the 2015 Annual Report, the LFGCCS was run with intermittent operation between November 2015 and March 2016, which entailed a 1.1-hour blower-on cycle at 14 scfm and a 1.9-hour blower-off cycle that occurred eight times per day, resulting in an LFGCCS extraction rate for the whole system over a 24-hour period that was equivalent to the estimated daily methane generation rate for the MMSW within the Interim Action Area over a 24-hour period. Since March 1, 2016, the LFGCCS has been operating continuously at a low extraction rate of approximately 10 scfm for the whole system. LFGCCS monitoring indicates that residual nitrogen tends to rise

¹ As established in WAC 173-304, Minimum Functional Standards for Solid Waste Handling, and as defined in WAC 173-304-460 and King County Board of Health Title 10 regulations.

² The primary operational goal of the LFGCCS is to protect human health and the environment by achieving MFS. The principal migration criteria per the MFS and relevant to the whole of the South Park Landfill Site include the following: 1) methane concentrations in soil at the boundary of the MMSW must not exceed 5 percent by volume, the lower explosive limit (LEL) for methane; 2) methane concentrations inside buildings and structures on the landfill must not exceed 1.25 percent by volume, or 25 percent of the LEL; and 3) methane concentrations inside buildings and structures off the landfill must not exceed 100 parts per million volume (0.01 percent by volume and 0.2 percent of the LEL).

³ IACMP and OMMP compliance monitoring criteria to be used as triggers for LFGCCS mitigation measures (e.g., LFGCCS adjustments) are: 1) residual nitrogen in landfill gas collectors exceeds 20 percent; and 2) methane exceeds 1.25 percent (25 percent of the LEL) in perimeter landfill gas monitoring probes at the edge of the Interim Action Area.

⁴ The IACMP lists 20 Perimeter Probes selected for landfill gas monitoring, which are shown in Figure 2 and Attachment A. Some of the Perimeter Probes are completed within the MMSW, and some are outside the MMSW and better suited for evaluating landfill gas migration from the Interim Action Area. As described in the 2015 Annual Report, 11 of the 20 Perimeter Probes were selected as best suited for evaluating methane concentrations relative to compliance monitoring criteria (Compliance Probes).

⁵ Residual nitrogen level is calculated from measured concentrations of methane, oxygen, and carbon dioxide in landfill gas collectors as follows: Sum concentrations of methane, oxygen, and carbon dioxide. Subtract this sum from 100 to obtain an estimate of total percent nitrogen concentration. Multiply the measured oxygen concentration by 3.76 to estimate the amount of nitrogen associated with oxygen, and subtract the product from the estimated total percent nitrogen concentration. The resulting percent concentration is considered residual nitrogen. Increasing extraction rate in a landfill gas collector will result in a reduction of methane levels, but residual nitrogen may increase. Experience has shown that 20 percent residual nitrogen is a safe, stable landfill gas control system operational parameter that will not induce aerobic decomposition, increasing the risk for accelerated differential settlement of the land surface and/or combustion in buried solid waste. If necessary to control migrating methane, residual nitrogen up to 30 percent can be managed with monitoring.



in landfill gas collectors when the LFGCCS extraction rate is high, and methane concentrations tend to rise in Perimeter Probes when the LFGCCS extraction rate is low

During 2016, horizontal and vertical landfill gas collector extraction flow rates were periodically adjusted to control methane at the Perimeter Probes without over-extraction of landfill gas and to achieve compliance monitoring criteria. Control valves were fully opened in horizontal landfill gas collectors H5 and H19 (Figure 2) to increase extraction flow rates in February and March 2016, respectively, in response to elevated methane in adjacent Perimeter Probes. In May 2016, to enable increased extraction flow rates from horizontal landfill gas collectors H5 and H19, the connector pipe and flow control valve sizing was increased from 1-inch-diameter schedule-40 polyvinyl chloride (PVC) connector pipe with a 1-inch-diameter brass gate valve to 3-inch-diameter schedule-40 PVC connector pipe with a 3-inch-diameter brass gate valve.

In February 2016, vertical landfill gas collectors V6, V10, V16 through V19, and V25 through V27 were shut off to reduce residual nitrogen levels along the northeastern SPPD Property line. In October 2016, to enable controlled lower-flow landfill gas extraction from these vertical landfill gas collectors and from vertical and horizontal collectors V1, V2, V5, V9, V12, V15, V21 through V24, V29, V34 through V38, H2, and H21, the connector pipe and flow-rate control valve size was decreased from 1-inch-diameter schedule-40 PVC connector pipe with a 1-inch-diameter brass gate valve to 3/8-inch-diameter reinforced synthetic rubber hosing and a 0.25-inch-diameter brass gate valve.

The LFGCCS was reported shut-down on December 14, 2016. Farallon investigated the cause of the automatic shut-down and discovered a malfunctioning condensate sump pump at the remote condensate sump on the northeastern corner of SPPD Property. The sump pump shut-down allowed condensate to collect until the high-level float switch automatically shut down the LFGCCS. The LFGCCS was restarted on December 16, 2016 and was automatically shut down again on December 19, 2016. Further investigation indicated that the cause for the second shut-down was malfunctioning condensate sump float switches at the condensate sump on the northwestern corner of the SPPD Property. The LFGCCS was restarted and had no further unexpected automatic shut-downs in 2016.

No equipment has been installed to treat LFGCCS emissions. Farallon sampled LFGCCS emissions on December 9, 2015, and discussions are ongoing with the Puget Sound Clean Air Agency regarding the need for treatment and/or permitting. A technical memorandum regarding Landfill Gas Control System Emissions Sampling, SPPD Property, South Park Landfill Site, Seattle, Washington dated January 20, 2016, from Thaddeus J. Cline, Andrew E. Vining, and Clyde N. Moore of Farallon to Claude Williams of the Puget Sound Clean Air Agency (included with the 2015 Annual Report), concluded that emissions treatment is not necessary and that a Notice of Construction Application is not required. However, this assessment was not formally approved by Claude Williams before his retirement in spring 2016. In February 2017, a project manager with Puget Sound Clean Air Agency indicated that the LFGCCS may not be exempt from a Notice of Construction Application. Farallon is further investigating this issue.



Per the IACMP and the OMMP, compliance landfill gas monitoring includes sampling landfill gas in a subset of 20 landfill gas Perimeter Probes within and outside of the perimeter of the Interim Action Area along 5th Avenue South, South Sullivan Street, and Occidental Avenue South; and along the northern boundary of the Interim Action Area. The locations of the Perimeter Probes were selected based on their spatial distribution around the Interim Action Area and presence within, or within approximately 200 feet of, the Interim Action Area. Per the OMMP, 11 of the 20 Perimeter Probes were identified as Compliance Probes. Nine of the 20 Perimeter Probes were completed in MMSW, and landfill gas monitoring at these Perimeter Probes is useful for measuring conditions within the areas of MMSW and for evaluating adjustments of the LFGCCS; however, these Perimeter Probes are not considered to be Compliance Probes. Locations of Perimeter Probes, LFGCCS collectors, and the boundary of the South Park Landfill are shown in Figure 2. Landfill gas probe sampling methodology is described in the IACMP and OMMP. Perimeter Probe methane monitoring data collected to date are presented in Attachment A.

The LFGCCS currently is being operated to focus on methane control in areas where landfill gas is most likely to migrate beyond the Interim Action Area and to areas outside of the South Park Landfill. Methane concentrations in Compliance Probes along Occidental Avenue South and South Sullivan Street, outside the Interim Action Area and the South Park Landfill Site, are low or non-detect and do not exceed the compliance monitoring criterion of 1.5 percent. Some Compliance Probes along Occidental Avenue South and South Sullivan Street were unable to be monitored because well screens were flooded by high groundwater levels preventing extraction of soil gas from the Compliance Probes.

Prior to steady-state operation of the LFGCCS, methane was detected at concentrations exceeding the LEL in Compliance Probe GP-29 on the eastern side of 5th Avenue South. Compliance Probe GP-29 was installed within MMSW at the boundary of the South Park Landfill. In 2016, methane concentrations were less than the LEL in Compliance Probe GP-29. Between January and April 2016, methane concentrations were between 1.3 and 2.9 percent by volume in Compliance Probe GP-29, prior to retrofitting of the horizontal landfill gas collector H5 for increased extraction flow rate in May 2016. Between May and September 2016, methane concentrations were between 1.2 percent by volume in May and 0 percent in September in Compliance Probe GP-29. In December 2016, methane concentrations were detected between 0 and 3.4 percent by volume. The elevated methane concentrations exceeding the 1.25 percent methane compliance monitoring criterion in Compliance Probe GP-29 were caused by LFGCCS automatic shut-downs during December 2016. After the LFGCCS was restarted and continuously operated later in December, methane concentrations were non-detect in Compliance Probe GP-29.

Methane concentrations in Perimeter Probe GP-33 on the northwestern corner of the Interim Action Area were less than the LEL and frequently non-detect during landfill gas monitoring events prior to re-development of the SPPD Property. Methane has been detected at concentrations exceeding the LEL in Perimeter Probe GP-33 since May 2015 and after the landfill cap was completed on the northwestern portion of the SPPD Property in April 2015. Perimeter Probe GP-33 is not considered a Compliance Probe as it is installed within the boundary of the South Park Landfill in MMSW. However, Perimeter Probe GP-33 is located near the boundary of the Interim



Action Area proximate to an adjacent land parcel where no MMSW is known to occur. Until March 2016, landfill gas collectors on the northwestern portion of the Interim Action Area were operated at very low extraction rates as part of the effort to minimize residual nitrogen levels within the Interim Action Area. In March 2016, landfill gas collector valving on the northwestern portion of the Interim Action Area was opened for increased methane control in the area around Perimeter Probe GP-33. Horizontal landfill gas collector H19 was retrofitted in May 2016 to increase extraction flow rate and methane control in the area around Perimeter Probe GP-33. Since May 2016, methane has been detected at concentrations less than the LEL, except during the automatic LFGCCS system shut-downs in December when methane was detected at 8.0 percent by volume and exceeded the LEL. Since the LFGCCS was restarted and continuously operated later in December, methane has been maintained at concentrations less than the LEL in Perimeter Probe GP-33.

Methane concentrations in Compliance Probes indicate that the LFGCCS is achieving methane control at less than the LEL at the edge of the MMSW per the MFS operational goal. The LFGCCS is achieving the compliance monitoring criterion for methane by maintaining methane concentrations less than 1.25 percent in Compliance Probes, with some exceptions at Compliance Probe GP-29, as discussed above, prior to continuous operation with a fully opened control valve retrofitted for increase flow in May 2016. When detected, methane concentrations in other Compliance Probes, including those along 5th Avenue South, were considerably less than the 1.25 percent compliance monitoring criterion.

Methane frequently has been detected at concentrations exceeding the LEL in Perimeter Probes completed within MMSW along the northern boundary of the Interim Action Area and along the shared property line with adjacent properties north of the Interim Action Area that are also situated within the South Park Landfill. A general increasing trend was noted in methane concentrations in some Perimeter Probes along the northern boundary of the Interim Action Area following construction of the Interim Action landfill cap. Landfill gas collector valving in this area currently is throttled downward to reduce residual nitrogen levels in the Interim Action Area, allowing methane concentrations exceeding the LEL in some of the northern Perimeter Probes during some monitoring events. Methane concentrations in Perimeter Probe GP-17 installed on the western side of 5th Avenue South, also completed within MMSW, exceeded the LEL during all monitoring events in 2016; however, data indicate that methane is being captured in this area. Because Perimeter Probes are completed in MMSW within the South Park Landfill, the existing conditions are considered acceptable at this time. Perimeter Probes will continue to be monitored and results shared with other potentially liable persons, and will be included in future annual LFGCCS progress reporting.

PLANNED 2017 OPERATIONS

During 2017, the LFGCCS will be monitored quarterly and operated so as to maintain compliance with the operational goal and compliance monitoring criteria with a focus on maximizing methane control along 5th Avenue South (Compliance Probe GP-29), on the northwestern portion of the



Interim Action Area (Perimeter Probe GP-33), and on lowering levels of residual nitrogen in the Interim Action Area. If residual nitrogen levels can be effectively managed within the Interim Action Area, the LFGCCS will be adjusted in 2017 to reduce methane concentrations in Perimeter Probes constructed within MMSW along the northern boundary of the Interim Action Area. Farallon will evaluate whether methane concentrations can be maintained in this area at less than the LEL without causing elevated residual nitrogen concentrations in the Interim Action Area. Methane concentrations along the northern portion of the Interim Action Area and within the interior of the South Park Landfill may be further reduced in the future when landfill gas control systems are installed on adjacent properties to collect and control methane generated outside of the Interim Action Area.

The condensate collection sump pumps and float switches that caused the December 2016 LFGCCS automatic shut-downs will be assessed and repaired, as necessary, to prevent future inadvertent automatic LFGCCS shut-downs. Improvements are planned to the LFGCCS alarm systems in 2017 to more expeditiously send alerts if malfunctions occur. LFGCCS operation, monitoring, and repairs and compliance probes monitoring will be documented in the 2017 summary report to be completed by the end of the first quarter of 2018.

Attachments: Figure 1, *Vicinity Map*
Figure 2, *Property Map*
Attachment A, Perimeter Probe Methane Monitoring Data

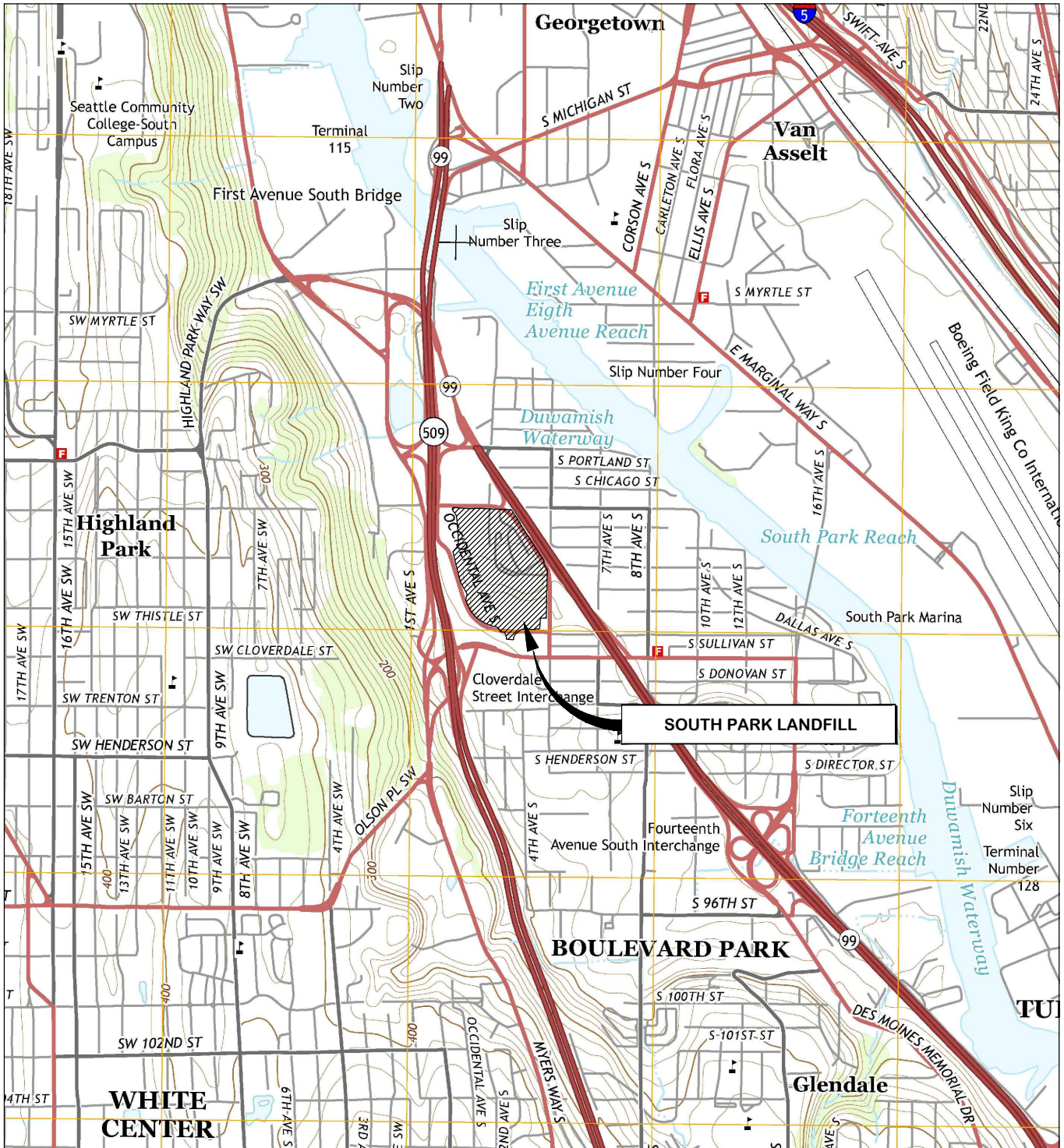
TJC:mm

FIGURES

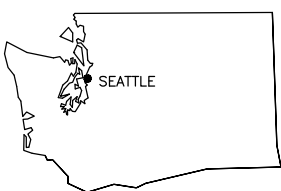
LANDFILL GAS COLLECTION AND CONTROL SYSTEM INTERIM ACTION SUMMARY REPORT

**SPPD Property
South Park Landfill Site
Seattle, Washington**

Farallon PN: 408-002



REFERENCE: 7.5 MINUTE USGS QUADRANGLE SEATTLE SOUTH, WASHINGTON. DATED 2014



WASHINGTON



Washington
Issaquah | Bellingham | Seattle

Oregon
Portland | Bend | Baker City

California
Oakland | Sacramento | Irvine

FARALLON
CONSULTING

Quality Service for Environmental Solutions | farallonconsulting.com

FIGURE 1

VICINITY MAP
SPPD PROPERTY, SOUTH PARK LANDFILL SITE
SEATTLE, WASHINGTON

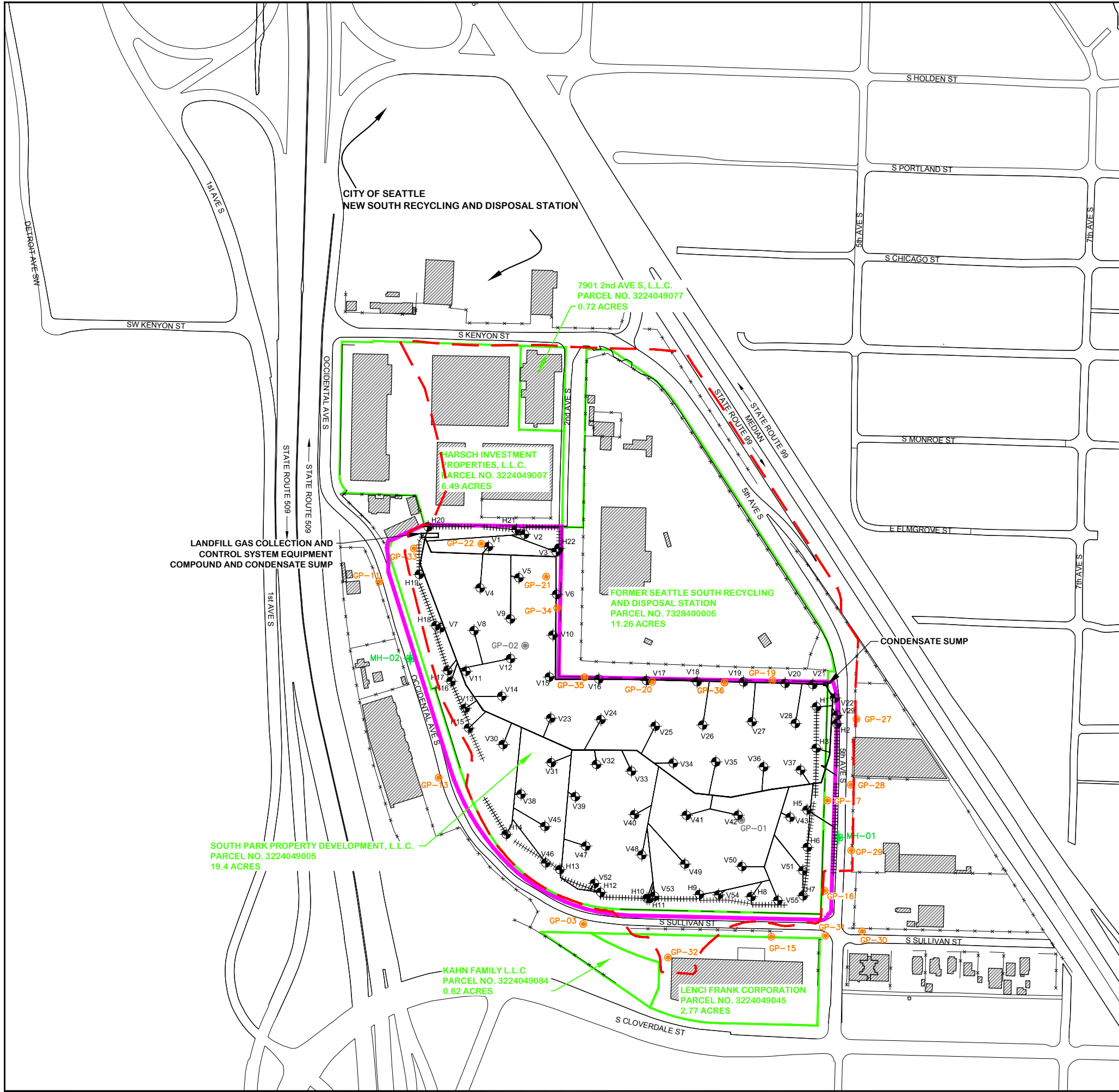
FARALLON PN: 408-002

Drawn By: DEW

Checked By: TC

Date: 03/17/2016

Disk Reference: BASEMAP□



LEGEND

- SOUTH PARK LANDFILL BOUNDARY
- KING COUNTY TAX PARCEL BOUNDARY
- INTERIM ACTION AREA
- x--- FENCE
- EXISTING BUILDING
- LANDFILL GAS PROBE MONITORING LOCATIONS
- FORMER LANDFILL GAS PROBE MONITORING LOCATIONS
- GAS PROBE LOCATIONS NOT INCLUDED IN THE INTERIM ACTION COMPLIANCE MONITORING PROGRAM
- SEWER MANHOLE MONITORING LOCATIONS
- LANDFILL GAS COLLECTION VERTICAL WELL
- LANDFILL GAS COLLECTION HORIZONTAL TRENCH

NOTES:

- FIGURE INCLUDES INFORMATION PRESENTED IN COLOR. PHOTOCOPIES MAY NOT DEPICT ALL INTENDED INFORMATION ON THE ORIGINAL DRAWING.
- ALL LOCATIONS ARE APPROXIMATE



Washington
Issaquah | Bellingham | Seattle

Oregon
Portland | Bend | Baker City

California
Oakland | Sacramento | Irvine

FARALLON
CONSULTING

Quality Service for Environmental Solutions | farallonconsulting.com

FIGURE 2

PROPERTY MAP
SPPD PROPERTY, SOUTH PARK LANDFILL SITE
SEATTLE, WASHINGTON

FARALLON PN: 408-002

ATTACHMENT A
PERIMETER PROBE METHANE MONITORING DATA

LANDFILL GAS COLLECTION AND CONTROL SYSTEM
INTERIM ACTION SUMMARY REPORT

SPPD Property
South Park Landfill Site
Seattle, Washington

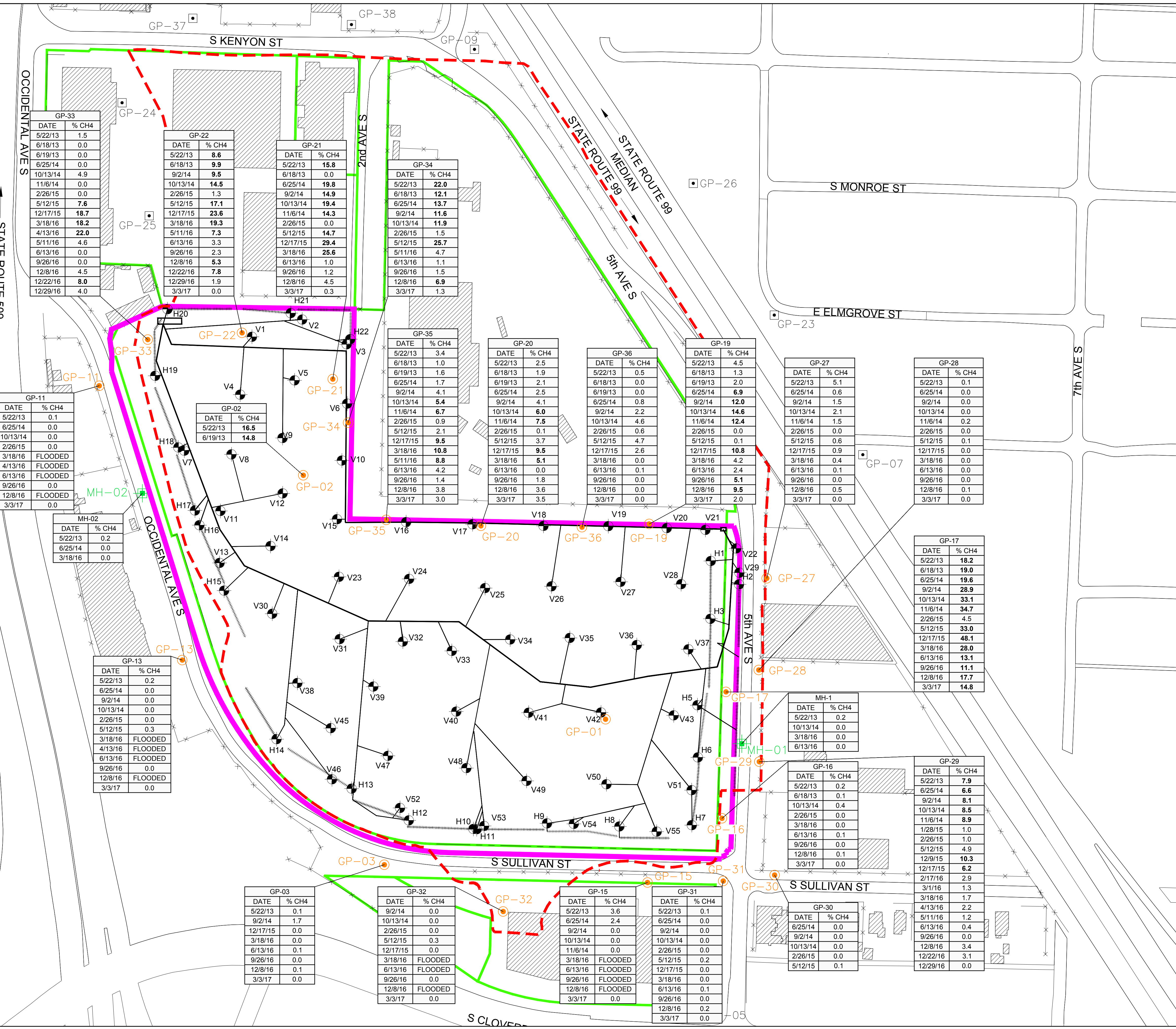
Farallon PN: 408-002

LEGEND

- SOUTH PARK LANDFILL BOUNDARY
- KING COUNTY TAX PARCEL BOUNDARY
- INTERIM ACTION AREA
- FENCE
- DITCH OR CHANNEL
- EXISTING BUILDING
- LANDFILL GAS PROBE MONITORING LOCATIONS
- GAS PROBE LOCATIONS NOT INCLUDED IN THE INTERIM ACTION COMPLIANCE MONITORING PROGRAM
- + SEWER MANHOLE MONITORING LOCATIONS

NOTES:

- FIGURE INCLUDES INFORMATION PRESENTED IN COLOR. PHOTOCOPIES MAY NOT DEPICT ALL INTENDED INFORMATION ON THE ORIGINAL DRAWING.
- ALL LOCATIONS ARE APPROXIMATE
- DATA SHOWN IN BOLD REPRESENTS PERCENT METHANE (%CH4) MEASURED ABOVE THE LOWER EXPLOSIVE LIMIT FOR METHANE (5%).



0 100
APPROXIMATE SCALE IN FEET

FIGURE A-1
PERIMETER PROBE COMPLIANCE MONITORING DATA
SOUTH PARK LANDFILL SITE
SEATTLE, WASHINGTON

FARALLON
CONSULTING
Quality Service for Environmental Solutions | farallonconsulting.com

Washington
Issaquah | Bellingham | Seattle
Oregon
Portland | Bend | Baker City
California
Oakland | Sacramento | Irvine

Drawn By: AEVIROL Checked By: TC

Date: 12/22/2016 Disk Reference: PP IA LFG Comp Mon

Table A-1
Perimeter Probe Compliance Monitoring Data
South Park Landfill Site
Seattle, Washington
Farallon PN: 408-002

Monitoring Location ¹	Start Date and Time ²	Barometric (in. Hg) ³	Well Head Pressure (in. H ₂ O) ⁴	LFG Monitoring Parameters ⁵			Balance Gas (% Volume)	CO (ppm)	LEL (% CH ₄)
				CH ₄	CO ₂	O ₂			
				(% Volume)	(% Volume)	(% Volume)			
GP-01	5/14/1997	-	-	-	8.9	20.0 - 21.3	-	-	-
	5/23/97 11:00	30.54	-	0.0	-	20.9	-	-	-
	6/20/97 10:12	30.65	-	-	-	20.8	-	-	-
	7/21/97 12:20	29.65	-	0.0	-	21.0	-	-	-
	8/18/97 10:45	30.67	-	0.0	-	21.0	-	-	-
	9/8/97 10:05	30.70	-	-	-	-	-	-	-
	10/24/97 6:00	31.08	-	6.0	-	0.0	-	-	-
	11/19/97 8:00	30.15	-	7.0	-	0.0	-	-	-
	12/2/97 12:15	30.50	-	13.0	-	0.0	-	-	-
	1/16/98 8:08	30.15	-	7.0	-	-	-	-	-
	2/19/98 7:40	30.39	-	7.0	-	0.0	-	-	-
	3/17/98 7:43	30.82	-	5.0	-	2.0	-	-	-
	4/14/98 8:30	29.63	-	4.0	-	1.0	-	-	-
	5/19/98 11:43	30.69	-	0.0	-	0.0	-	-	-
	6/4/98 8:18	30.54	-	3.0	-	0.0	-	-	-
	7/27/98 12:47	30.58	-	2.0	-	2.0	-	-	-
	8/4/98 12:14	30.55	-	2.0	-	2.5	-	-	-
	9/17/98 12:45	30.02	-	1.0	-	8.0	-	-	-
	10/5/98 12:50	30.08	-	1.0	-	9.0	-	-	-
	11/6/98 12:40	30.39	-	-	-	5.0	-	-	-
	12/2/98 12:52	30.19	-	3.0	-	0.0	-	-	-
	1/6/99 9:59	29.70	-	6.0	-	0.0	-	-	-
	2/12/99 17:05	-	-	8.9	19.0	14.4	-	-	-
	2/18/99 11:39	30.00	-	6.0	-	0.0	-	-	-
	3/5/99 10:55	31.00	-	9.0	-	0.0	-	-	-
	4/9/99 12:09	30.80	-	4.0	-	0.0	-	-	-
	5/7/99 10:58	30.85	-	6.0	-	0.0	-	-	-
	6/23/99 10:31	30.65	-	-	-	6.0	-	-	-
	7/20/99 9:16	30.50	-	0.0	-	21.0	-	-	-
	8/20/99 10:28	30.65	-	-	-	20.0	-	-	-
	9/29/99 10:18	30.80	-	0.0	-	20.0	-	-	-
	10/15/99 15:10	30.40	-	0.5	18.6	2.1	-	-	-
	10/26/99 16:25	30.01	-	0.0	0.1	21.4	-	-	-
	10/19/99 7:44	30.79	-	0.0	-	21.0	-	-	-
	11/15/99 8:50	30.35	-	0.0	-	21.0	-	-	-
	12/6/99 13:00	30.40	-	0.0	-	21.0	-	-	-
	1/11/00 12:50	30.02	-	-	-	20.0	-	-	-
	2/3/00 8:18	29.93	-	3.9	15.2	3.7	-	-	-
	2/7/00 10:26	30.42	-	2.0	-	21.0	-	-	-
	3/9/00 12:53	30.49	-	-	-	21.0	-	-	-
	4/7/00 9:53	30.94	-	-	-	20.0	-	-	-
	5/11/00 11:36	30.46	-	0.0	-	21.0	-	-	-
6/5/00 11:46	30.38	-	0.0	-	21.0	-	-	-	
7/17/00 9:04	30.50	-	0.0	-	21.0	-	-	-	
8/2/00 10:30	30.08	-	0.4	12.6	8.0	-	-	-	
9/5/00 8:25	29.79	-	0.0	13.7	7.1	-	-	-	
10/10/00 9:10	29.35	-	0.2	17.2	2.5	-	-	-	
11/3/00 9:55	29.86	-	0.0	14.7	4.6	-	-	-	
12/6/00 11:27	29.57	-	0.8	16.6	2.1	-	-	-	
1/5/01 9:58	29.13	-	0.9	13.6	5.3	-	-	-	
2/2/01 7:44	29.57	-	2.9	16.7	2.4	-	-	-	
3/2/01 11:15	29.57	-	0.6	12.4	7.0	-	-	-	
4/6/01 9:10	29.13	-	3.0	15.3	4.4	-	-	-	
5/10/01 8:00	-	-	3.0	19.8	2.6	-	-	-	
6/4/01 9:26	29.98	-	1.1	13.9	6.0	-	-	-	
7/6/01 9:45	30.10	-	0.3	13.6	6.3	-	-	-	
8/3/01 9:35	29.94	-	0.3	12.1	8.7	-	-	-	
9/7/01 9:10	30.25	-	0.0	13.7	6.1	-	-	-	
10/8/01 7:30	-	-	0.1	16.8	4.2	-	-	-	
11/5/01 7:37	-	-	0.0	17.8	2.1	-	-	-	
12/7/01 8:45	30.40	-	2.8	18.7	0.9	-	-	-	
1/11/02 13:40	-	-	2.3	14.0	3.8	-	-	-	
2/8/02 13:35	-	-	1.7	13.0	7.8	-	-	-	
3/8/02 9:35	-	-	0.7	15.9	4.7	-	-	-	
4/4/02 9:10	-	-	1.8	15.9	4.1	-	-	-	
5/6/02 13:30	30.20	-	2.1	14.0	3.9	-	-	-	
6/4/02 8:20	-	-	1.4	13.8	5.6	-	-	-	
7/3/02 13:33	-	-	0.6	14.3	5.2	-	-	-	
8/2/02 13:20	-	-	0.2	12.9	6.2	-	-	-	
9/5/02 8:49	-	-	0.0	13.2	6.0	-	-	-	
10/2/02 12:12	-	-	0.1	13.0	6.8	-	-	-	
11/6/02 13:15	-	-	0.0	14.8	5.5	-	-	-	
12/9/02 14:02	-	-	0.1	16.2	4.7	-	-	-	
1/3/03 12:50	30.07	-	0.8	15.7	3.8	-	-	-	
2/5/03 13:30	-	-	3.3	17.2	1.7	-	-	-	

Table A-1
Perimeter Probe Compliance Monitoring Data
South Park Landfill Site
Seattle, Washington
Farallon PN: 408-002

Monitoring Location ¹	Start Date and Time ²	Barometric (in. Hg) ³	Well Head Pressure (in. H ₂ O) ⁴	LFG Monitoring Parameters ⁵			Balance Gas (% Volume)	CO (ppm)	LEL (% CH ₄)
				CH ₄	CO ₂	O ₂			
				(% Volume)	(% Volume)	(% Volume)			
GP-01	3/7/03 12:30	29.77	-	2.6	15.3	4.6	-	-	-
	4/1/03 11:51	29.63	-	1.3	11.9	5.8	-	-	-
	5/5/03 12:10	30.05	-	1.0	12.0	7.2	-	-	-
	6/3/03 11:25	30.17	-	0.7	13.3	6.0	-	-	-
	7/2/03 11:32	30.14	-	0.3	14.4	6.3	-	-	-
	8/5/03 11:03	29.24	-	0.1	13.6	5.8	-	-	-
	9/3/03 11:01	29.98	-	0.2	13.4	7.2	-	-	-
	10/2/03 12:10	30.08	-	0.3	14.2	6.3	-	-	-
	11/5/03 13:45	30.20	-	0.0	19.3	1.8	-	-	-
	12/4/03 12:30	29.76	-	1.8	18.6	2.0	-	-	-
	1/14/04 9:55	30.03	-	1.7	16.3	3.0	-	-	-
	2/2/04 11:46	29.96	-	6.7	19.1	1.6	-	-	-
	3/2/04 9:30	30.23	-	0.6	11.4	8.0	-	-	-
	4/5/04 12:40	30.10	-	0.9	8.9	11.8	-	-	-
	5/3/04 10:45	30.13	-	0.4	11.8	8.4	-	-	-
	6/2/04 10:50	30.09	-	0.2	10.8	9.3	-	-	-
	7/6/04 12:15	30.10	-	0.0	10.7	9.1	-	-	-
	8/6/04 10:05	29.87	-	0.1	11.4	8.6	-	-	-
9/10/04 8:44	30.00	-	0.2	13.8	6.9	-	-	-	
2/9/11 8:57	30.46	-	-	10.9	22.3	0.0	-	-	
GP-02	5/14/97 to 9/10/04	-	-	0.0	0.7	0.0	-	-	-
	5/14/97 to 9/10/04	-	-	25.0	16.0	21.0	-	-	-
	5/14/97 0:00	-	-	-	0.9	13.3	-	-	107.2
	5/23/97 11:15	30.54	-	7.0	-	0.0	-	-	-
	6/20/97 10:25	30.65	-	-	-	20.8	-	-	0.0
	7/21/97 0:00	29.65	-	0.0	-	21.0	-	-	-
	8/18/97 11:02	30.67	-	0.0	-	21.0	-	-	-
	9/8/97 10:15	30.70	-	-	-	-	-	-	61.0
	10/24/97 6:00	31.08	-	14.0	-	0.0	-	-	-
	11/19/97 7:50	30.15	-	18.0	-	0.0	-	-	-
	12/2/97 12:02	30.50	-	25.0	-	0.0	-	-	-
	1/16/98 8:20	30.15	-	16.0	-	-	-	-	-
	2/19/98 7:52	30.40	-	15.0	-	0.0	-	-	-
	3/17/98 7:59	30.88	-	12.0	-	1.0	-	-	-
	4/14/98 8:30	29.63	-	11.0	-	1.0	-	-	-
	5/19/98 11:20	30.64	-	15.0	-	0.0	-	-	-
	6/4/98 8:44	30.52	-	6.0	-	1.0	-	-	-
	7/27/98 12:22	30.57	-	2.4	-	2.5	-	-	-
	8/4/98 12:39	30.58	-	2.5	-	2.5	-	-	-
	9/17/98 12:18	30.03	-	1.4	-	3.0	-	-	-
	10/5/98 12:25	30.08	-	1.6	-	2.5	-	-	-
	11/6/98 1:00	30.39	-	-	-	2.0	-	-	4.0
	12/2/98 1:00	30.19	-	-	-	0.0	-	-	4.0
	1/6/99 10:16	29.70	-	18.0	-	0.0	-	-	-
	3/5/99 11:06	29.95	-	15.0	-	0.0	-	-	-
	4/9/99 11:59	30.80	-	12.0	-	0.0	-	-	-
	5/7/99 10:51	30.85	-	-	-	-	-	-	-
	6/23/99 10:18	30.65	-	5.0	-	0.0	-	-	-
	7/20/99 9:02	30.50	-	4.0	-	0.0	-	-	-
	8/20/99 10:20	30.65	-	3.0	-	0.0	-	-	-
	9/29/99 10:28	30.80	-	3.0	-	0.0	-	-	-
	10/15/99 14:45	30.40	-	2.2	13.1	2.5	-	-	96.0
	10/28/99 16:48	29.13	-	0.2	0.7	20.3	-	-	4.0
	10/19/99 7:22	30.79	-	3.0	-	0.0	-	-	-
	11/15/99 9:37	30.35	-	3.0	-	0.0	-	-	-
	12/6/99 12:00	30.40	-	7.0	-	0.0	-	-	-
	1/11/00 12:34	30.02	-	9.0	-	0.0	-	-	-
	2/3/00 9:22	29.79	-	15.2	12.6	0.0	-	-	304.0
	2/7/00 9:59	30.42	-	10.0	-	0.0	-	-	-
	3/9/00 12:36	30.49	-	10.0	-	0.0	-	-	-
4/7/00 9:32	30.94	-	10.0	-	0.0	-	-	-	
5/11/00 11:31	30.46	-	7.0	-	0.0	-	-	-	
6/5/00 11:15	30.38	-	3.0	-	0.0	-	-	-	
7/17/00 8:20	30.50	-	1.0	-	4.0	-	-	-	
8/2/00 11:04	29.71	-	2.2	12.8	1.3	-	-	-	
9/5/00 10:05	29.93	-	3.0	14.4	0.4	-	-	-	
10/10/00 8:20	29.49	-	3.0	14.1	0.9	-	-	-	
11/3/00 13:22	29.71	-	5.3	14.0	0.1	-	-	-	
12/6/00 14:25	29.71	-	10.9	15.2	0.0	-	-	-	
1/5/01 13:30	29.79	-	12.0	14.2	0.0	-	-	-	
2/2/01 10:05	29.49	-	13.7	14.5	0.0	-	-	-	
3/2/01 13:40	29.42	-	12.8	13.5	0.0	-	-	-	

Table A-1
Perimeter Probe Compliance Monitoring Data
South Park Landfill Site
Seattle, Washington
Farallon PN: 408-002

Monitoring Location ¹	Start Date and Time ²	Barometric (in. Hg) ³	Well Head Pressure (in. H ₂ O) ⁴	LFG Monitoring Parameters ⁵			Balance Gas (% Volume)	CO (ppm)	LEL (% CH ₄)
				CH ₄	CO ₂	O ₂			
				(% Volume)	(% Volume)	(% Volume)			
GP-02	4/6/01 12:35	29.49	-	11.0	12.5	0.2	-	-	-
	5/10/01 11:20	-	-	13.0	14.5	0.0	-	-	-
	6/4/01 12:15	29.98	-	6.7	10.6	0.0	-	-	-
	7/6/01 12:10	30.10	-	4.0	12.7	0.0	-	-	-
	8/3/01 11:30	29.94	-	2.1	12.8	1.6	-	-	-
	9/7/01 11:40	30.25	-	2.3	11.1	3.3	-	-	-
	10/8/01 10:30	-	-	3.8	13.7	0.2	-	-	-
	12/7/01 11:40	30.40	-	15.3	15.4	0.0	-	-	-
	1/11/02 15:45	-	-	15.7	13.1	0.0	-	-	-
	2/8/02 16:00	-	-	15.8	15.0	0.0	-	-	-
	3/8/02 11:54	-	-	13.4	14.9	0.1	-	-	-
	4/4/02 11:41	-	-	11.5	13.3	0.1	-	-	-
	5/6/02 16:05	30.20	-	12.6	12.8	0.0	-	-	-
	6/4/02 10:48	-	-	5.7	11.9	0.0	-	-	-
	7/3/02 15:45	-	-	2.2	11.8	9.0	-	-	-
	8/2/02 11:45	-	-	3.0	13.1	0.0	-	-	-
	9/5/02 11:03	-	-	1.9	12.3	3.2	-	-	-
	10/2/02 15:40	-	-	2.2	13.1	2.5	-	-	-
	11/6/02 13:40	-	-	3.0	14.1	0.7	-	-	-
	12/9/02 16:20	-	-	8.4	14.7	0.0	-	-	-
	1/7/03 14:25	30.17	-	12.0	14.4	0.0	-	-	-
	2/5/03 15:30	30.30	-	9.5	11.1	5.8	-	-	-
	3/7/03 14:35	29.70	-	12.5	14.8	0.0	-	-	-
	4/1/03 13:47	-	-	12.5	13.2	0.0	-	-	-
	5/5/03 14:55	30.07	-	10.6	13.1	0.0	-	-	-
	6/3/03 14:25	30.22	-	3.1	10.0	4.0	-	-	-
	7/2/03 14:25	30.16	-	1.4	10.2	5.9	-	-	-
	8/5/03 14:10	30.00	-	2.4	13.5	1.2	-	-	-
	9/3/03 14:10	30.01	-	1.0	11.1	6.2	-	-	-
	10/2/03 14:45	30.03	-	3.6	14.8	1.0	-	-	-
11/5/03 16:21	30.15	-	9.8	15.9	0.0	-	-	-	
12/4/03 14:36	29.65	-	13.3	16.3	0.0	-	-	-	
1/14/04 14:25	29.94	-	13.8	16.2	0.0	-	-	-	
2/6/04 14:15	29.98	-	13.8	15.6	0.0	-	-	-	
3/2/04 11:45	30.22	-	12.1	14.7	0.0	-	-	-	
4/5/04 15:25	30.10	-	10.0	13.5	0.1	-	-	-	
5/3/04 2:55	30.14	-	4.9	12.1	0.8	-	-	-	
6/1/04 13:25	30.12	-	3.3	12.3	0.8	-	-	-	
7/6/04 15:08	30.07	-	1.9	13.5	1.6	-	-	-	
8/6/04 13:15	29.84	-	2.3	14.4	0.9	-	-	-	
9/10/04 11:14	29.95	-	3.7	15.6	0.7	-	-	-	
2/9/11 10:15	30.44	-0.04	20.7	15.5	0.0	-	-	-	
5/22/13 14:12	29.81	-0.005	16.5	13.8	0.0	-	98.0	-	
6/19/13 10:15	29.79	0	14.8	15.2	0.0	69.9	0.0	-	
GP-03	12/16/98 to 9/10/04	-	-	0.0	0.0	0.0	-	-	-
	12/16/98 to 9/10/04	-	-	5.0	16.0	22.0	-	-	-
	12/16/98 16:22	-	-	0.0	5.1	11.4	-	-	-
	12/29/98 14:00	-	-	0.0	0.0	10.6	-	-	0.0
	1/7/99 8:54	30.08	-	0.0	4.5	12.1	-	-	0.0
	2/12/99 17:15	-	-	0.0	0.8	18.2	-	-	0.0
	2/18/99 11:45	30.00	-	1.0	-	6.0	-	-	-
	3/5/99 11:13	29.95	-	0.0	-	8.0	-	-	-
4/9/99 12:15	30.85	-	-	5.0	-	6.0	-	-	

Table A-1
Perimeter Probe Compliance Monitoring Data
South Park Landfill Site
Seattle, Washington
Farallon PN: 408-002

Monitoring Location ¹	Start Date and Time ²	Barometric (in. Hg) ³	Well Head Pressure (in. H ₂ O) ⁴	LFG Monitoring Parameters ⁵			Balance Gas (% Volume)	CO (ppm)	LEL (% CH ₄)
				CH ₄	CO ₂	O ₂			
				(% Volume)	(% Volume)	(% Volume)			
GP-03	5/7/99 11:03	30.85	-	0.0	-	3.0	-	-	-
	6/23/99 10:37	30.65	-	2.0	-	0.0	-	-	-
	7/20/99 9:23	30.50	-	2.0	-	0.0	-	-	-
	8/20/99 10:39	30.65	-	0.0	-	0.0	-	-	-
	9/29/99 10:35	30.80	-	0.0	-	5.0	-	-	-
	10/15/99 12:10	30.50	-	0.1	12.4	8.1	-	-	2.0
	10/26/99 13:30	30.01	-	0.0	0.1	21.8	-	-	0.0
	10/19/99 8:01	30.79	-	0.0	-	9.0	-	-	-
	11/15/99 8:10	30.35	-	0.0	-	7.0	-	-	-
	12/6/99 12:27	30.40	-	0.0	-	4.0	-	-	-
	1/11/00 11:43	30.02	-	0.0	-	7.0	-	-	-
	2/3/00 9:05	29.71	-	0.0	8.0	9.3	-	-	0.0
	2/7/00 8:46	30.42	-	0.0	-	10.0	-	-	-
	3/9/00 11:32	30.49	-	0.0	-	12.0	-	-	-
	4/7/00 8:43	30.94	-	0.0	-	10.0	-	-	-
	5/11/00 10:23	30.46	-	0.0	-	8.0	-	-	-
	6/5/00 10:20	30.38	-	0.0	-	7.0	-	-	-
	7/17/00 9:19	30.50	-	0.0	-	7.0	-	-	-
	8/2/00 8:15	29.71	-	0.0	13.2	8.1	-	-	0.0
	9/5/00 9:15	29.79	-	0.0	12.1	9.7	-	-	-
	10/10/00 9:50	29.49	-	0.0	8.1	13.4	-	-	-
	11/3/00 11:00	29.86	-	0.0	12.0	4.3	-	-	-
	12/6/00 12:38	29.35	-	2.2	10.6	2.9	-	-	-
	1/5/01 11:22	29.79	-	0.1	9.6	3.5	-	-	-
	2/2/01 9:07	29.49	-	0.0	9.2	5.7	-	-	-
	3/2/01 12:40	29.57	-	0.0	7.8	7.1	-	-	-
	4/6/01 11:10	29.42	-	0.0	8.8	5.5	-	-	-
	5/10/01 10:05	-	-	0.1	11.6	1.4	-	-	-
	6/4/01 10:57	29.98	-	0.2	10.6	3.9	-	-	-
	7/6/01 11:00	30.10	-	0.4	12.1	3.2	-	-	-
	8/3/01 10:48	29.94	-	0.0	11.8	11.8	-	-	-
	9/7/01 10:37	-	-	-	-	-	-	-	-
	10/8/01 9:15	-	-	-	-	-	-	-	-
	12/7/01 10:28	30.40	-	0.0	8.5	6.7	-	-	-
	2/8/02 14:40	-	-	0.0	5.8	7.2	-	-	-
	3/8/02 10:37	-	-	0.0	5.8	8.5	-	-	-
	4/4/02 10:25	-	-	0.0	0.4	17.7	-	-	-
	5/6/02 15:05	30.20	-	0.0	7.5	5.1	-	-	-
	6/4/02 9:35	-	-	0.3	8.4	5.1	-	-	-
	7/3/02 14:35	-	-	0.2	10.8	3.7	-	-	-
8/2/02 14:20	-	-	0.0	12.6	3.2	-	-	-	
9/5/02 10:02	-	-	0.1	13.0	5.7	-	-	-	
10/2/02 14:40	-	-	0.1	10.6	8.3	-	-	-	
11/6/02 14:35	-	-	0.0	11.7	6.3	-	-	-	
12/9/02 15:05	-	-	0.4	12.0	4.2	-	-	-	
1/7/03 13:22	-	-	0.0	7.9	7.2	-	-	-	
2/5/03 14:20	30.30	-	0.0	6.7	7.4	-	-	-	
3/7/03 13:30	29.74	-	0.1	6.9	6.3	-	-	-	
4/1/03 12:40	29.65	-	0.0	6.4	7.6	-	-	-	
5/5/03 13:50	30.09	-	0.1	7.7	6.3	-	-	-	
6/3/03 13:07	30.21	-	0.3	9.9	6.7	-	-	-	
7/2/03 13:20	30.15	-	0.2	11.3	5.6	-	-	-	
8/5/03 13:00	30.00	-	0.1	13.1	6.8	-	-	-	
9/3/03 13:00	30.00	-	0.1	13.2	5.5	-	-	-	

Table A-1
Perimeter Probe Compliance Monitoring Data
South Park Landfill Site
Seattle, Washington
Farallon PN: 408-002

Monitoring Location ¹	Start Date and Time ²	Barometric (in. Hg) ³	Well Head Pressure (in. H ₂ O) ⁴	LFG Monitoring Parameters ⁵			Balance Gas (% Volume)	CO (ppm)	LEL (% CH ₄)
				CH ₄	CO ₂	O ₂			
				(% Volume)	(% Volume)	(% Volume)			
GP-03	10/2/03 13:40	30.04	-	0.3	13.8	6.8	-	-	-
	11/5/03 15:17	30.17	-	0.4	11.2	4.7	-	-	-
	12/4/03 13:32	29.67	-	0.0	8.7	5.9	-	-	-
	1/14/04 11:11	30.01	-	0.0	6.6	6.8	-	-	-
	2/3/04 12:05	29.80	-	0.0	6.1	8.6	-	-	-
	3/2/04 10:40	30.23	-	0.0	6.1	8.3	-	-	-
	4/5/04 14:30	30.10	-	0.0	7.1	8.0	-	-	-
	5/3/04 11:55	30.14	-	0.2	8.7	7.2	-	-	-
	6/1/04 12:17	30.11	-	0.2	10.2	4.7	-	-	-
	7/6/04 13:35	29.00	-	0.0	11.7	5.6	-	-	-
	8/6/04 11:48	29.88	-	0.1	13.5	5.7	-	-	-
	9/10/04 10:13	29.96	-	1.2	15.5	1.9	-	-	-
	12/28/11 0:00	29.66	-0.2	0.0	1.0	2.2	-	-	-
	2/9/11 13:30	30.41	-	0.2	5.8	9.5	-	-	-
	5/25/11 0:00	29.69	-0.01	0.1	3.5	14.9	-	-	-
	9/23/11 0:00	29.86	0.14	0.0	11.0	6.4	83.0	0.0	2.0
	5/22/13 18:04	29.8	0	0.1	6.7	10.3	82.0	-	29.0
	9/2/14 16:30	29.63	-	1.7	10.7	4.6	-	-	-
	12/17/15 11:55	29.7	0	0.0	7.0	4.0	88.9	0.0	0.0
	3/18/16 10:40	29.91	0.000	0.0	3.4	14.2	82.4	0.0	0.0
6/13/16 16:25	29.91	0	0.1	7.0	14.4	77.1	0.0	2.0	
9/26/16 15:40	29.83	0.005	0.0	5.8	12.6	81.4	0.0	0.0	
12/8/16 15:00	29.94	0	0.1	8.5	9.4	81.5	0.0	2.0	
GP-09	3/18/16 16:15	29.84	0	0.0	4.0	15.0	81.0	-	-
GP-11	10/15/99 to 9/10/04	-	-	0.0	0.1	4.4	-	-	-
	10/15/99 to 9/10/04	-	-	0.4	8.0	21.0	-	-	-
	10/15/99 12:23	30.40	-	0.1	1.3	17.5	-	-	2.0
	10/26/99 11:20	30.01	-	0.2	0.1	20.7	-	-	4.0
	11/15/99 7:55	30.35	-	0.0	-	12.0	-	-	-
	12/6/99 12:15	30.40	-	0.0	-	10.0	-	-	-
	1/11/00 11:35	30.02	-	0.0	-	6.0	-	-	-
	2/3/00 9:16	29.71	-	0.0	3.7	6.7	-	-	0.0
	2/7/00 8:36	30.42	-	0.0	-	6.0	-	-	-
	3/9/00 11:25	30.49	-	0.0	-	6.0	-	-	-
	4/7/00 8:35	30.94	-	0.0	-	7.0	-	-	-
	5/11/00 10:15	30.46	-	0.0	-	7.0	-	-	-
	6/5/00 10:09	30.38	-	0.0	-	9.0	-	-	-
	7/17/00 9:24	30.50	-	0.0	-	7.0	-	-	-
	8/3/00 8:35	29.35	-	0.0	6.6	6.9	-	-	-
	9/5/00 9:35	29.64	-	0.0	7.7	4.4	-	-	-
	10/10/00 10:03	29.20	-	0.0	7.8	4.8	-	-	-
	11/3/00 11:16	29.79	-	0.0	7.4	5.6	-	-	-
	12/6/00 12:55	29.79	-	0.0	6.7	6.6	-	-	-
	1/5/01 11:47	29.49	-	0.0	6.4	7.1	-	-	-
	2/2/01 9:21	29.64	-	0.0	6.1	8.7	-	-	-
	3/2/01 12:55	29.35	-	0.0	5.6	9.8	-	-	-
	4/6/01 11:35	29.20	-	0.0	5.5	10.4	-	-	-
	5/10/01 10:25	-	-	0.0	6.0	8.0	-	-	-
	6/4/01 11:15	29.98	-	0.0	5.4	9.5	-	-	-
	7/6/01 11:20	30.10	-	0.0	6.6	8.1	-	-	-
	8/3/01 11:17	29.94	-	0.0	7.1	7.0	-	-	-
	9/7/01 10:52	30.25	-	0.0	7.1	4.7	-	-	-
	10/8/01 9:40	-	-	0.0	7.9	5.6	-	-	-
	11/5/01 9:50	-	-	0.0	8.3	5.6	-	-	-
12/7/01 10:50	30.40	-	0.0	7.0	5.6	-	-	-	
1/11/02 15:05	-	-	0.0	3.7	6.6	-	-	-	
3/8/02 10:05	-	-	0.0	3.5	10.4	-	-	-	
5/6/02 15:20	30.20	-	0.0	3.2	10.0	-	-	-	
6/4/02 9:55	-	-	0.0	3.5	10.4	-	-	-	

Table A-1
Perimeter Probe Compliance Monitoring Data
South Park Landfill Site
Seattle, Washington
Farallon PN: 408-002

Monitoring Location ¹	Start Date and Time ²	Barometric (in. Hg) ³	Well Head Pressure (in. H ₂ O) ⁴	LFG Monitoring Parameters ⁵			Balance Gas (% Volume)	CO (ppm)	LEL (% CH ₄)
				CH ₄	CO ₂	O ₂			
				(% Volume)	(% Volume)	(% Volume)			
GP-11	7/3/02 14:55	-	-	0.0	4.4	9.1	-	-	-
	8/2/02 14:30	-	-	0.0	4.8	6.8	-	-	-
	9/5/02 10:20	-	-	0.1	5.8	5.9	-	-	-
	10/2/02 14:55	-	-	0.1	6.3	6.1	-	-	-
	11/6/02 14:50	-	-	0.0	6.9	7.4	-	-	-
	12/9/02 15:22	-	-	0.1	6.4	7.4	-	-	-
	1/7/03 13:35	-	-	0.0	5.4	8.1	-	-	-
	2/5/03 14:40	-	-	0.0	4.9	8.6	-	-	-
	3/7/03 13:45	29.72	-	0.1	4.7	10.1	-	-	-
	4/1/03 12:55	-	-	0.0	3.7	14.4	-	-	-
	5/5/03 14:10	30.08	-	0.1	3.6	14.4	-	-	-
	6/3/03 13:27	30.21	-	0.1	4.0	12.6	-	-	-
	7/2/03 13:40	30.15	-	0.1	4.6	11.1	-	-	-
	8/5/03 13:17	30.01	-	0.1	5.8	8.0	-	-	-
	9/3/03 13:20	30.02	-	0.1	6.3	6.5	-	-	-
	10/2/03 14:00	30.05	-	0.3	7.3	6.3	-	-	-
	11/5/03 15:35	30.17	-	0.4	6.8	6.2	-	-	-
	12/4/03 13:50	29.67	-	0.0	5.9	8.9	-	-	-
	1/14/04 13:35	29.90	-	0.0	5.2	8.8	-	-	-
	2/3/04 12:20	29.77	-	0.0	3.3	12.9	-	-	-
	3/2/04 10:55	30.22	-	0.0	4.3	10.4	-	-	-
	4/5/04 14:51	30.10	-	0.0	4.1	11.5	-	-	-
	5/3/04 12:11	30.15	-	0.2	4.2	12.0	-	-	-
	6/1/04 12:35	30.15	-	0.2	4.5	12.1	-	-	-
	7/6/04 14:00	30.09	-	0.1	5.2	10.9	-	-	-
	8/6/04 12:10	29.85	-	0.0	6.2	8.7	-	-	-
	9/10/04 10:31	29.96	-	0.1	6.5	7.4	-	-	-
	2/9/11 14:22	30.34	-	0.0	3.8	10.5	-	-	-
	5/25/11 0:00	29.68	-0.08	0.1	0.1	20.0	-	-	-
	9/23/11 0:00	29.88	0.17	0.0	4.9	9.3	-	-	-
12/28/11 0:00	29.70	-0.18	0.0	4.7	4.9	-	-	-	
5/22/13 17:33	29.8	0	0.1	3.3	14.0	82.5	33.0	2.0	
6/25/14 16:00	29.75	0	0.0	0.9	19.2	79.9	33.0	0.0	
10/13/14 17:25	29.54	2.6	0.0	4.0	13.1	80.3	-	0.0	
2/26/15 10:10	30.1	-0.025	0.0	0.5	20.9	-	-	-	
5/12/15 13:45	29.63	-	-	-	-	-	-	-	
12/17/15 0:00	29.69	-	-	-	-	-	-	-	
3/18/16 10:29	29.89	-	-	-	-	-	-	-	
4/13/16 12:50	30.01	-	-	-	-	-	-	-	
6/13/16 16:35	29.91	-	-	-	-	-	-	-	
9/26/16 15:59	29.83	0	0	0	21.2	78.8	0.0	0.0	
12/8/16 14:55	29.94	-0.012	0.2	1	21.5	77.3	1.0	3.0	
GP-13	10/15/99 to 9/10/04	-	-	0.0	0.1	0.1	-	-	-
	10/15/99 to 9/10/04	-	-	0.3	14.0	22.0	-	-	-
	10/15/99 12:16	30.40	-	0.2	4.7	16.0	-	-	4.0
	10/26/99 13:00	30.01	-	0.0	0.1	22.0	-	-	0.0
	11/15/99 8:03	30.35	-	0.0	-	18.0	-	-	-
	12/6/99 12:19	30.40	-	0.0	-	18.0	-	-	-
	1/11/00 11:39	30.02	-	0.0	-	17.0	-	-	-
	2/7/00 8:40	30.42	-	0.0	-	18.0	-	-	-
	3/9/00 11:29	30.49	-	0.0	-	16.0	-	-	-
	4/7/00 8:39	30.94	-	0.0	-	11.0	-	-	-
	5/11/00 10:19	30.46	-	0.0	-	7.0	-	-	-
	6/5/00 10:13	30.38	-	0.0	-	7.0	-	-	-
	7/17/00 9:21	30.50	-	0.0	-	11.0	-	-	-
	8/3/00 7:44	29.42	-	0.0	9.4	12.3	-	-	0.0
	9/5/00 9:25	29.71	-	0.0	10.4	10.1	-	-	-
	10/10/00 9:58	29.20	-	0.0	8.1	14.6	-	-	-
11/3/00 11:07	29.49	-	0.0	8.4	9.3	-	-	-	
12/6/00 12:43	29.86	-	0.0	8.6	6.7	-	-	-	
1/5/01 11:30	29.86	-	0.0	7.8	7.0	-	-	-	

Table A-1
Perimeter Probe Compliance Monitoring Data
South Park Landfill Site
Seattle, Washington
Farallon PN: 408-002

Monitoring Location ¹	Start Date and Time ²	Barometric (in. Hg) ³	Well Head Pressure (in. H ₂ O) ⁴	LFG Monitoring Parameters ⁵			Balance Gas (% Volume)	CO (ppm)	LEL (% CH ₄)
				CH ₄	CO ₂	O ₂			
				(% Volume)	(% Volume)	(% Volume)			
GP-13	2/2/01 9:14	29.57	-	0.0	7.0	9.4	-	-	-
	3/2/01 12:45	29.49	-	0.0	5.6	10.6	-	-	-
	4/6/01 11:20	29.42	-	0.0	7.5	6.2	-	-	-
	5/10/01 10:10	-	-	0.0	9.9	2.1	-	-	-
	6/4/01 11:04	29.98	-	0.0	9.7	7.2	-	-	-
	7/6/01 11:12	30.10	-	0.0	10.8	10.7	-	-	-
	8/3/01 10:58	29.94	-	0.0	10.6	7.6	-	-	-
	9/7/01 10:43	30.25	-	0.0	11.3	9.1	-	-	-
	10/8/01 9:30	-	-	0.0	9.7	12.3	-	-	-
	11/5/01 9:40	-	-	0.0	9.2	9.5	-	-	-
	12/7/01 10:38	30.40	-	0.0	7.0	3.5	-	-	-
	6/4/02 9:45	-	-	0.0	8.5	4.4	-	-	-
	7/3/02 14:42	-	-	0.0	10.6	6.2	-	-	-
	8/2/02 14:25	-	-	0.0	11.4	6.5	-	-	-
	9/5/02 10:10	-	-	0.0	11.1	10.3	-	-	-
	10/2/02 14:45	-	-	0.1	9.1	12.5	-	-	-
	11/6/02 14:40	-	-	0.0	6.7	14.8	-	-	-
	12/9/02 15:12	-	-	0.1	8.2	10.3	-	-	-
	5/5/03 13:59	30.09	-	0.1	6.3	3.8	-	-	-
	6/3/03 13:16	30.18	-	0.1	9.1	6.9	-	-	-
	7/2/03 13:30	30.15	-	0.1	11.8	7.0	-	-	-
	8/5/03 13:10	30.00	-	0.1	13.6	7.9	-	-	-
	9/3/03 13:10	30.00	-	0.1	11.6	9.3	-	-	-
	10/2/03 13:45	30.05	-	0.3	10.1	11.5	-	-	-
	11/5/03 15:25	30.17	-	0.3	9.1	0.9	-	-	-
	12/4/03 13:39	29.67	-	0.0	6.6	0.1	-	-	-
	4/5/04 14:40	30.10	-	0.1	4.9	0.2	-	-	-
	5/3/04 12:05	30.14	-	0.2	6.9	0.5	-	-	-
	6/1/04 12:25	30.09	-	0.2	8.6	0.8	-	-	-
	7/6/04 13:45	30.09	-	0.1	11.4	6.1	-	-	-
	8/6/04 11:58	29.98	-	0.0	12.2	8.4	-	-	-
	9/10/04 10:23	29.96	-	0.1	13.7	6.9	-	-	-
9/23/11 0:00	-	-	0.0	8.0	-	-	-	-	
5/22/13 17:45	29.8	0.18	0.2	4.7	11.0	84.6	4.0	3.0	
6/25/14 15:20	29.75	0	0.0	0.3	20.2	79.5	4.0	0.0	
9/2/14 16:50	29.63	1.8	0.0	1.7	17.8	80.3	-	0.0	
10/13/14 17:35	29.53	3.6	0.0	6.3	6.8	86.2	-	0.0	
2/26/15 10:20	30.1	0.08	0.0	2.9	12.0	-	-	-	
5/12/15 0:00	29.63	-3.178	0.3	5.0	12.9	81.8	-	5.0	
5/12/15 0:00	29.63	-3.178	0.3	5.0	12.9	81.8	-	5.0	
12/17/15 0:00	29.7					Flooded Well Screen			
3/18/16 10:37	29.91					Flooded Well Screen			
4/13/16 12:35	30.01					Flooded Well Screen			
6/13/16 16:32	29.91					Flooded Well Screen			
9/26/16 14:48	29.85	0.005	0	0	21.6	78.5	-	-	
12/8/16 14:40	29.94					Flooded Well Screen			
GP-15	5/14/97 to 9/10/04	-	-	0	0	5.5	-	-	-
	5/14/97 to 9/10/04	-	-	0.2	18	22	-	-	-
	10/15/99 12:00	30.50	-	0.0	3.3	18.4	-	-	-
	10/28/99 14:10	29.50	-	0.1	0.0	20.8	-	-	-
	11/15/99 8:14	30.35	-	0.0	-	19.0	-	-	-
	12/6/99 12:33	30.40	-	0.0	-	20.0	-	-	-
	1/11/00 11:48	30.02	-	0.0	-	20.0	-	-	-
	2/7/00 8:48	30.42	-	0.0	-	21.0	-	-	-
	3/9/00 11:35	30.49	-	0.0	-	21.0	-	-	-
	4/7/00 8:50	30.94	-	0.0	-	21.0	-	-	-
	5/11/00 10:30	30.46	-	0.0	-	21.0	-	-	-
	6/5/00 10:27	30.38	-	0.0	-	21.0	-	-	-
	7/17/00 9:14	30.50	-	-	-	18.0	-	-	-
8/4/00 8:45	29.64	-	0.0	0.9	21.0	-	-	-	
9/5/00 8:54	29.86	-	0.0	4.5	18.0	-	-	-	
10/10/00 9:38	29.42	-	-	0.0	6.8	16.0	-	-	

Table A-1
Perimeter Probe Compliance Monitoring Data
South Park Landfill Site
Seattle, Washington
Farallon PN: 408-002

Monitoring Location ¹	Start Date and Time ²	Barometric (in. Hg) ³	Well Head Pressure (in. H ₂ O) ⁴	LFG Monitoring Parameters ⁵			Balance Gas (% Volume)	CO (ppm)	LEL (% CH ₄)
				CH ₄	CO ₂	O ₂			
				(% Volume)	(% Volume)	(% Volume)			
GP-15	11/3/00 10:50	29.93	-	0.0	1.3	20.2	-	-	-
	12/6/00 12:28	29.49	-	0.0	0.0	22.0	-	-	-
	7/6/01 10:50	30.10	-	0.0	1.3	19.5	-	-	-
	8/3/01 9:58	29.94	-	0.0	5.7	16.7	-	-	-
	9/7/01 10:25	30.10	-	0.0	7.6	14.5	-	-	-
	10/8/01 9:05	29.94	-	0.0	8.6	14.0	-	-	-
	11/5/01 9:10	30.25	-	0.0	6.9	15.4	-	-	-
	8/2/02 14:08	-	-	0.0	4.8	15.7	-	-	-
	9/5/02 9:50	-	-	0.1	10.5	11.4	-	-	-
	10/2/02 14:25	-	-	0.1	11.5	10.5	-	-	-
	11/6/02 14:20	-	-	0.0	9.7	12.0	-	-	-
	12/9/02 14:59	-	-	0.1	0.1	20.5	-	-	-
	6/3/03 12:55	30.21	-	0.1	0.0	20.6	-	-	-
	7/2/03 13:10	30.15	-	0.1	7.5	11.4	-	-	-
	8/5/03 12:55	29.99	-	0.0	14.1	8.1	-	-	-
	9/3/03 12:50	30.01	-	0.0	14.5	7.4	-	-	-
	10/2/03 13:30	30.06	-	0.2	17.5	5.5	-	-	-
	7/6/04 13:19	29.06	-	0.0	4.9	15.0	-	-	-
	8/6/04 11:32	29.88	-	0.1	9.9	10.8	-	-	-
	9/23/2011	29.99	0.28	0.0	11.8	7.7	-	-	-
	11/17/2011	29.61	3.35	0.0	0.2	19.4	-	-	-
	5/22/13 11:15	29.84	2.25	3.6	5.5	12.2	79.7	0.0	66.0
	6/25/14 14:45	29.7	0.00	2.4	3.1	8.5	85.8	0.0	47.0
	9/2/14 14:50	29.65	0.01	0.0	15.9	6.7	77.5	-	0.0
	10/13/2014	29.65	0.077	0.0	13.8	8	78.2	-	0
	11/6/2014	29.93							Flooded Well Screen
	2/26/2015	29.21							Flooded Well Screen
	5/12/2015	29.63							Flooded Well Screen
12/17/15 0:00	29.7							Flooded Well Screen	
3/18/16 11:05	29.91							Flooded Well Screen	
6/13/16 14:10	29.92							Flooded Well Screen	
9/26/16 14:22	29.85							Flooded Well Screen	
12/8/16 13:30	29.97							Flooded Well Screen	
GP-16	10/15/99 to 9/10/04	-	-	0.0	0.1	0.6	-	-	-
	10/15/99 to 9/10/04	-	-	2.0	23.0	21.0	-	-	-
	10/15/99 11:45	30.50	-	0.0	16.5	6.5	-	-	0.0
	10/28/99 16:10	29.42	-	0.1	0.1	20.6	-	-	2.0
	11/15/99 8:30	30.35	-	0.0	-	20.0	-	-	-
	12/6/99 12:44	30.40	-	0.0	-	3.0	-	-	-
	1/11/00 12:00	30.02	-	0.0	-	20.0	-	-	-
	2/3/00 8:25	29.86	-	0.0	15.2	4.3	-	-	0.0
	2/7/00 9:37	30.42	-	0.0	-	21.0	-	-	-
	3/9/00 11:51	30.49	-	0.0	-	20.0	-	-	-
	4/7/00 9:01	30.94	-	1.0	-	18.0	-	-	-
	5/11/00 10:40	30.46	-	2.0	-	12.0	-	-	-
	6/5/00 9:47	30.38	-	2.0	-	18.0	-	-	-
	7/17/00 9:11	30.50	-	0.0	-	20.0	-	-	-
	8/4/00 8:30	29.71	-	0.0	17.8	2.9	-	-	-
	9/5/00 8:45	30.01	-	0.0	16.7	5.7	-	-	-
	10/10/00 9:27	29.42	-	0.0	19.2	3.1	-	-	-
	11/3/00 11:52	29.93	-	0.0	16.3	5.5	-	-	-
	12/6/00 12:28	29.86	-	0.0	14.6	6.4	-	-	-
	1/5/01 11:01	29.71	-	0.0	16.7	2.3	-	-	-
	2/2/01 8:11	29.64	-	0.0	15.0	4.1	-	-	-
	3/2/01 12:22	29.49	-	0.0	14.1	5.8	-	-	-
	4/6/01 9:50	29.27	-	0.0	16.5	2.8	-	-	-
5/10/01 9:40	-	-	0.0	22.6	2.6	-	-	-	
6/4/01 10:38	29.98	-	1.2	17.9	3.5	-	-	-	
7/6/01 10:09	30.10	-	0.1	20.4	2.0	-	-	-	
8/3/01 9:20	29.94	-	0.0	15.7	7.0	-	-	-	
9/7/01 9:41	30.25	-	0.0	17.7	4.5	-	-	-	

Table A-1
Perimeter Probe Compliance Monitoring Data
South Park Landfill Site
Seattle, Washington
Farallon PN: 408-002

Monitoring Location ¹	Start Date and Time ²	Barometric (in. Hg) ³	Well Head Pressure (in. H ₂ O) ⁴	LFG Monitoring Parameters ⁵			Balance Gas (% Volume)	CO (ppm)	LEL (% CH ₄)
				CH ₄	CO ₂	O ₂			
				(% Volume)	(% Volume)	(% Volume)			
GP-16	10/8/01 8:15	-	-	0.0	16.5	6.1	-	-	-
	11/5/01 8:06	-	-	0.0	17.0	5.1	-	-	-
	12/7/01 9:21	30.40	-	0.0	16.1	3.7	-	-	-
	1/11/02 13:55	-	-	0.0	14.1	3.9	-	-	-
	2/8/02 13:50	-	-	0.0	16.3	3.8	-	-	-
	3/8/02 9:52	-	-	0.0	15.2	4.7	-	-	-
	4/4/02 9:25	-	-	0.0	15.3	4.7	-	-	-
	5/6/02 14:10	30.20	-	1.0	16.4	2.6	-	-	-
	6/4/02 8:40	-	-	0.0	15.7	4.5	-	-	-
	7/3/02 13:47	-	-	0.0	21.0	1.0	-	-	-
	8/2/02 13:30	-	-	0.0	19.3	1.8	-	-	-
	9/5/02 9:08	-	-	0.0	16.6	5.5	-	-	-
	10/2/02 12:35	-	-	0.0	17.5	5.7	-	-	-
	11/6/02 13:30	-	-	0.0	16.9	6.1	-	-	-
	12/9/02 14:15	-	-	0.1	17.0	5.9	-	-	-
	1/3/03 13:08	30.07	-	0.0	17.4	3.7	-	-	-
	2/5/03 13:43	30.30	-	0.0	16.6	4.6	-	-	-
	3/7/03 12:45	29.77	-	0.1	16.7	2.9	-	-	-
	4/1/03 12:03	29.63	-	0.1	18.9	2.2	-	-	-
	5/5/03 12:29	30.06	-	0.1	19.5	1.7	-	-	-
	6/3/03 11:51	30.18	-	0.2	20.8	2.0	-	-	-
	7/2/03 11:52	30.15	-	0.1	21.1	1.9	-	-	-
	8/5/03 11:26	29.32	-	0.1	21.1	2.8	-	-	-
	9/3/03 11:20	30.02	-	0.1	20.3	2.5	-	-	-
	10/2/03 12:25	30.08	-	0.2	19.0	4.7	-	-	-
	11/5/03 14:27	30.20	-	0.0	18.0	4.9	-	-	-
	12/4/03 12:45	29.74	-	0.0	15.3	6.2	-	-	-
	1/14/04 10:20	30.03	-	0.0	16.1	4.5	-	-	-
	2/2/04 12:05	29.64	-	0.0	17.0	1.9	-	-	-
	3/2/04 9:47	30.23	-	0.0	15.3	5.6	-	-	-
	4/5/04 13:04	30.10	-	0.1	18.6	3.2	-	-	-
	5/3/04 11:02	30.15	-	0.1	18.9	3.0	-	-	-
	6/1/04 11:05	30.11	-	1.4	23.0	0.6	-	-	-
	7/6/04 12:30	30.10	-	0.0	20.6	3.1	-	-	-
8/6/04 10:30	29.88	-	0.1	19.6	3.7	-	-	-	
2/8/11 9:30	30.29	0.00	0.0	19.0	19.0	-	-	-	
5/25/11 0:00	29.69	-0.06	0.0	0.1	20.2	-	-	-	
6/27/11 0:00	29.68	0.12	0.0	20.1	0.8	-	-	-	
9/23/11 0:00	29.91	0.25	0.0	17.6	2.9	-	-	-	
11/17/11 0:00	29.61	-0.29	0.0	21.4	0.0	-	-	-	
12/28/11 0:00	29.96	-0.18	0.0	19.9	0.0	-	-	-	
5/22/13 15:19	29.82	-0.005	0.2	19.6	0.0	80.1	85.0	5.0	
6/18/13 17:17	29.78	-0.005	0.1	18.1	3.3	78.5	0.0	1.0	
10/13/14 11:40	29.71	0	0.4	0.7	19.8	79.0	-	0.1	
2/26/15 11:27	30.1	0	0.0	0.2	21.1	-	-	-	
12/17/15 0:00	29.69			Flooded Well Screen					
3/18/16 11:29	29.91	-	-	0.0	0.1	21.2	78.6	0.0	-
6/13/16 13:50	29.93	0	0	0.1	1.1	21.7	77.1	-	2
9/26/16 13:08	29.88	0.006	0.0	0.1	21.1	78.6	0.0	-	-
12/8/16 11:32	30.05	0	0	0.1	2.4	20.0	77.5	0.0	-
GP-17	10/15/99 to 9/10/04	-	-	0.0	0.1	0.0	-	-	-
	10/15/99 to 9/10/04	-	-	43.0	20.0	21.0	-	-	-
	10/15/99 11:28	30.50	-	0.6	17.5	4.5	-	-	12.0
	10/28/99 10:45	29.35	-	0.0	0.1	21.4	-	-	0.0
	11/15/99 8:56	30.35	-	0.0	-	20.0	-	-	-
	12/6/99 12:50	30.40	-	9.0	-	0.0	-	-	-
	1/11/00 12:05	30.02	-	15.0	-	3.0	-	-	-
	2/3/00 8:09	29.71	-	9.5	15.0	3.0	-	-	190.0
2/7/00 9:32	30.42	-	43.0	-	10.0	-	-	-	

Table A-1
Perimeter Probe Compliance Monitoring Data
South Park Landfill Site
Seattle, Washington
Farallon PN: 408-002

Monitoring Location ¹	Start Date and Time ²	Barometric (in. Hg) ³	Well Head Pressure (in. H ₂ O) ⁴	LFG Monitoring Parameters ⁵			Balance Gas (% Volume)	CO (ppm)	LEL (% CH ₄)
				CH ₄	CO ₂	O ₂			
				(% Volume)	(% Volume)	(% Volume)			
GP-17	3/9/00 11:55	30.49	-	0.0	-	21.0	-	-	-
	4/7/00 9:06	30.94	-	7.0	-	2.0	-	-	-
	5/11/00 10:46	30.46	-	10.0	-	5.0	-	-	-
	6/5/00 9:53	30.38	-	5.0	-	13.0	-	-	-
	7/17/00 8:57	30.50	-	0.0	-	20.0	-	-	-
	8/3/00 8:05	29.20	-	3.6	14.5	7.0	-	-	-
	9/5/00 9:52	29.64	-	2.5	18.3	4.1	-	-	-
	10/10/00 8:56	29.42	-	0.0	16.6	2.4	-	-	-
	11/3/00 11:40	29.93	-	0.3	15.0	5.3	-	-	-
	12/6/00 13:10	29.71	-	2.6	15.8	3.8	-	-	-
	1/5/01 10:50	29.71	-	9.3	20.2	0.0	-	-	-
	2/2/01 8:01	29.86	-	8.7	16.1	2.6	-	-	-
	3/2/01 12:10	29.57	-	5.7	14.8	2.8	-	-	-
	4/6/01 9:30	29.42	-	9.6	14.7	2.6	-	-	-
	5/10/01 8:45	-	-	11.8	17.1	2.1	-	-	-
	6/4/01 10:27	29.98	-	11.5	17.0	1.0	-	-	-
	7/6/01 9:57	30.10	-	2.7	16.7	2.5	-	-	-
	8/3/01 9:00	29.94	-	8.8	16.7	5.4	-	-	-
	9/7/01 9:30	30.25	-	0.6	14.4	5.9	-	-	-
	10/8/01 8:00	-	-	1.2	15.8	4.4	-	-	-
	11/5/01 7:55	-	-	1.4	17.0	4.1	-	-	-
	12/7/01 9:11	30.40	-	8.3	16.0	3.8	-	-	-
	1/11/02 13:20	-	-	8.0	14.0	3.1	-	-	-
	2/8/02 13:25	-	-	8.6	14.3	4.4	-	-	-
	3/8/02 9:15	-	-	1.6	13.6	4.7	-	-	-
	4/4/02 8:49	-	-	6.4	13.8	4.9	-	-	-
	5/6/02 13:55	30.20	-	10.6	13.1	4.4	-	-	-
	6/4/02 8:01	-	-	8.8	13.0	4.8	-	-	-
	7/3/02 13:25	-	-	7.8	16.7	2.5	-	-	-
	8/2/02 13:06	-	-	2.7	14.9	4.9	-	-	-
	9/5/02 8:35	-	-	2.0	13.6	6.7	-	-	-
	10/2/02 11:56	-	-	0.1	10.8	8.5	-	-	-
	11/6/02 12:55	-	-	0.0	12.0	6.1	-	-	-
	12/9/02 13:45	-	-	0.2	14.1	6.7	-	-	-
	1/3/03 12:35	30.12	-	6.7	14.8	6.1	-	-	-
	2/5/03 16:48	30.34	-	6.7	15.1	2.6	-	-	-
	3/7/03 12:15	29.77	-	6.8	13.1	6.1	-	-	-
	4/1/03 11:33	29.67	-	9.7	13.6	4.0	-	-	-
	5/5/03 11:50	30.08	-	10.6	16.5	2.1	-	-	-
	6/3/03 11:06	30.17	-	7.5	15.7	3.6	-	-	-
7/2/03 11:00	30.12	-	4.0	15.6	4.9	-	-	-	
8/5/03 10:40	29.24	-	3.6	16.8	4.9	-	-	-	
9/3/03 10:35	30.00	-	0.1	15.2	4.2	-	-	-	
10/2/03 11:45	30.08	-	0.3	13.6	6.9	-	-	-	
11/5/03 13:15	30.25	-	0.3	14.1	6.1	-	-	-	
12/4/03 12:15	29.81	-	3.9	12.9	6.3	-	-	-	
1/14/04 9:37	30.03	-	2.7	11.1	6.9	-	-	-	
2/2/04 11:30	29.67	-	6.6	12.0	5.9	-	-	-	
3/2/04 9:11	30.26	-	3.5	10.1	7.8	-	-	-	
4/8/04 14:24	30.14	-	3.6	8.8	9.1	-	-	-	
5/3/04 10:25	30.15	-	5.0	12.3	6.2	-	-	-	
6/1/04 9:20	30.08	-	9.7	15.2	4.4	-	-	-	
7/6/04 12:00	30.12	-	0.6	11.3	8.3	-	-	-	
8/6/04 9:40	29.87	-	4.7	14.9	7.2	-	-	-	

Table A-1
Perimeter Probe Compliance Monitoring Data
South Park Landfill Site
Seattle, Washington
Farallon PN: 408-002

Monitoring Location ¹	Start Date and Time ²	Barometric (in. Hg) ³	Well Head Pressure (in. H ₂ O) ⁴	LFG Monitoring Parameters ⁵			Balance Gas (% Volume)	CO (ppm)	LEL (% CH ₄)
				CH ₄	CO ₂	O ₂			
				(% Volume)	(% Volume)	(% Volume)			
GP-17	9/10/04 8:19	30.03	-	1.7	12.8	8.2	-	-	-
	2/8/11 9:10	30.29	0.00	10.1	19.1	0.0	-	-	-
	5/25/11 0:00	29.70	-0.06	5.8	18.9	0.0			
	6/27/00 0:00	29.67	0.11	8.3	17.9	0.0			
	9/23/11 0:00	29.97	0.31	1.0	18.5	0.0			
	11/17/11 0:00	29.56	-0.3	2.1	22.9	0.0			
	12/28/11 0:00	29.96	-0.18	7.4	21.4	0.0			
	5/22/13 15:50	29.81	-0.022	18.2	17.7	0.0	-	124.0	-
	6/18/13 17:00	29.75	0	19.0	21.3	0.0	59.6	0.0	-
	6/25/14 14:55	29.75	0.02	19.6	20.8	0.0	59.6	0.0	-
	9/2/14 12:15	29.71	0.008	28.9	25.3	0.0	46.1	-	100.0
	10/13/14 11:55	29.71	0.035	33.1	25.4	0.0	41.7	-	100.0
	11/6/14 16:03	29.93	0	34.7	26.8	0.0	-		
	2/26/15 11:35	30.1	0.019	4.5	16.7	0.0	-	-	-
	5/12/15 12:35	29.63	0	33.0	23.3	0.0	43.6		100.0
	12/17/15 13:49	29.7	-0.003	48.1	30.3	0.0	21.6	0.0	100.0
	3/18/16 11:40	29.91	-	28.0	26.0	0.0	46.0	0.0	-
6/13/16 13:26	29.93	-0.003	13.1	25.7	0.0	60.4	0.0	100.0	
9/26/16 12:05	29.9	0.01	11.1	22.4	0.0	66.4	0.0	-	
12/8/16 11:20	30.05	0.036	17.7	25.3	0.0	56.9	0.0	-	
GP-19	10/15/99 to 9/10/04	-	-	0.2	0.7	0.0	-	-	-
	10/15/99 to 9/10/04	-	-	10.0	23.0	20.0	-	-	-
	10/15/99 15:01	30.40	-	2.7	22.1	0.0	-	-	57.0
	10/28/99 16:16	29.57	-	0.2	0.7	20.3	-	-	4.0
	11/15/99 10:34	30.35	-	6.0	-	1.0	-	-	-
	12/6/99 12:10	30.40	-	7.0	-	0.0	-	-	-
	1/11/00 12:40	30.02	-	7.0	-	0.0	-	-	-
	2/3/00 10:35	29.79	-	8.3	18.2	0.0	-	-	166.0
	2/7/00 10:13	30.42	-	5.0	-	0.0	-	-	-
	3/9/00 12:41	30.49	-	10.0	-	0.0	-	-	-
	4/7/00 9:46	30.94	-	4.0	-	1.0	-	-	-
	5/11/00 11:26	30.46	-	4.0	-	0.0	-	-	-
	6/5/00 11:25	30.38	-	2.0	-	0.0	-	-	-
	7/17/00 8:45	30.50	-	2.0	-	0.0	-	-	-
	8/3/00 10:15	29.86	-	1.5	17.7	0.2	-	-	-
	9/6/00 8:30	29.86	-	2.2	19.8	0.0	-	-	-
	10/10/00 8:45	29.35	-	3.8	20.5	0.0	-	-	-
	11/3/00 12:55	29.42	-	4.8	20.3	0.1	-	-	-
	12/6/00 14:00	29.79	-	6.5	19.7	0.0	-	-	-
	1/5/01 13:05	29.79	-	6.6	19.0	0.0	-	-	-
	2/2/01 9:42	28.98	-	6.1	18.1	0.0	-	-	-
	3/2/01 13:15	29.57	-	5.5	17.3	0.1	-	-	-
	4/6/01 12:05	29.05	-	4.6	16.7	0.2	-	-	-
	5/10/01 10:50	-	-	4.6	22.7	0.0	-	-	-
	6/4/01 11:40	29.98	-	1.9	17.3	0.0	-	-	-
	7/6/01 11:38	30.10	-	0.8	18.8	0.0	-	-	-
	8/3/01 12:12	29.94	-	1.0	19.3	0.0	-	-	-
	9/7/01 10:15	30.25	-	2.5	19.2	0.0			
	10/8/01 10:00	-	-	3.8	20.7	0.0			
	11/5/01 10:05	-	-	5.1	20.5	0.0			
12/7/01 11:11	30.40	-	7.4	19.8	0.0	-	-	-	
1/11/02 15:25	-	-	7.4	17.5	0.0	-	-	-	
2/8/02 15:35	-	-	7.4	17.5	0.0	-	-	-	
3/8/02 11:25	-	-	3.6	17.0	0.0	-	-	-	
4/4/02 11:15	-	-	3.2	17.1	0.1	-	-	-	
5/6/02 15:40	30.20	-	3.7	16.1	0.0	-	-	-	
6/4/02 10:20	-	-	1.8	17.1	0.0	-	-	-	
7/3/02 15:15	-	-	1.2	17.6	0.0	-	-	-	
8/2/02 10:20	-	-	1.3	17.9	0.0	-	-	-	
9/5/02 10:35	-	-	2.5	19.3	0.2	-	-	-	
10/2/02 15:15	-	-	3.8	19.9	0.4	-	-	-	

Table A-1
Perimeter Probe Compliance Monitoring Data
South Park Landfill Site
Seattle, Washington
Farallon PN: 408-002

Monitoring Location ¹	Start Date and Time ²	Barometric (in. Hg) ³	Well Head Pressure (in. H ₂ O) ⁴	LFG Monitoring Parameters ⁵			Balance Gas (% Volume)	CO (ppm)	LEL (% CH ₄)
				CH ₄	CO ₂	O ₂			
				(% Volume)	(% Volume)	(% Volume)			
GP-19	11/6/02 15:15	-	-	6.9	20.5	0.0	-	-	-
	12/9/02 15:45	-	-	7.6	21.0	0.0	-	-	-
	1/7/03 13:55	30.18	-	7.2	19.1	0.0	-	-	-
	2/5/03 15:05	30.30	-	5.2	17.7	0.0	-	-	-
	3/7/03 14:10	29.71	-	5.7	17.7	0.0	-	-	-
	4/1/03 13:25	29.63	-	5.0	16.9	0.0	-	-	-
	5/5/03 14:30	30.09	-	3.5	17.4	0.0	-	-	-
	6/3/03 13:55	30.22	-	1.9	17.5	0.2	-	-	-
	7/2/03 14:00	30.16	-	1.2	18.2	0.2	-	-	-
	8/5/03 13:45	29.99	-	1.5	19.4	0.0	-	-	-
	9/3/03 13:45	30.00	-	2.1	20.3	0.0	-	-	-
	10/2/03 14:20	30.03	-	3.6	21.5	0.0	-	-	-
	11/5/03 15:57	30.16	-	7.4	21.4	0.0	-	-	-
	12/4/03 14:03	29.66	-	7.9	20.3	0.0	-	-	-
	1/14/04 14:55	29.95	-	6.3	19.1	0.0	-	-	-
	2/6/04 13:50	29.98	-	5.4	17.8	0.0	-	-	-
	3/2/04 11:20	30.23	-	4.2	17.1	0.1	-	-	-
	4/5/04 15:04	30.10	-	3.5	17.3	0.2	-	-	-
	5/3/04 12:35	30.14	-	1.9	17.3	0.3	-	-	-
	6/1/04 13:00	30.12	-	1.8	18.2	0.3	-	-	-
	7/6/04 14:25	30.08	-	1.0	18.9	0.1	-	-	-
	8/6/04 12:36	29.85	-	1.4	20.2	0.0	-	-	-
	9/10/04 10:53	29.95	-	3.1	20.7	0.2	-	-	-
	2/8/11 16:25	30.37	-0.02	1.9	14.3	0.0	-	-	-
	5/22/13 16:23	29.8	0.00	4.5	15.1	0.0	-	93.0	88.0
	6/18/13 10:47	29.81	0.00	1.3	15.8	0.0	82.9	0.0	25.0
	6/19/13 14:39	29.78	-0.006	2.0	17.4	0.0	80.5	0.0	40.0
	6/25/14 12:00	29.77	0.02	6.9	15.4	0.0	77.7	0.0	100.0
	9/2/14 11:50	29.72	0.009	12.0	19.6	0.0	68.4	-	100.0
	10/13/14 14:56	29.6	0.005	14.6	18.8	0.0	66.5	-	100.0
11/6/14 14:35	29.85	0.031	12.4	18.1	0.0	-	-	-	
2/26/15 11:50	30.1	0	0.0	9.5	5.5	-	-	-	
5/12/15 0:00	29.69	-0.01	0.1	16.6	0.3	82.8	-	3.0	
12/17/15 14:55	29.63	-0.001	10.8	16.0	0.8	72.0	0.0	100.0	
3/18/16 12:39	29.86	-	4.2	14.3	0.0	81.5	0.0	0.0	
6/13/16 16:00	29.92	0	2.4	14.2	0.0	78.3	5.0	48.0	
9/26/16 11:00	29.93	0.01	5.1	19.2	0.0	75.6	0.0	0.0	
12/8/16 10:38	30.05	0.005	9.5	19.4	0.0	71.0	0.0	-	
GP-20	10/15/99 to 9/10/04	-	-	0.3	1.6	0.0	-	-	-
	10/15/99 to 9/10/04	-	-	10.0	15.0	19.0	-	-	-
	5/14/97 0:00	-	-	-	0.9	13.3	-	-	107.2
	5/23/97 11:15	30.54	-	7.0	-	0.0	-	-	-
	6/20/97 10:25	30.65	-	-	-	20.8	-	-	0.0
	7/21/97 0:00	29.65	-	0.0	-	21.0	-	-	-
	8/18/97 11:02	30.67	-	0.0	-	21.0	-	-	-
	9/8/97 10:15	30.70	-	-	-	-	-	-	61.0
	10/24/97 6:00	31.08	-	14.0	-	0.0	-	-	-
	11/19/97 7:50	30.15	-	18.0	-	0.0	-	-	-
	12/2/97 12:02	30.50	-	25.0	-	0.0	-	-	-
	1/16/98 8:20	30.15	-	16.0	-	-	-	-	-
	2/19/98 7:52	30.40	-	15.0	-	0.0	-	-	-
	3/17/98 7:59	30.88	-	12.0	-	1.0	-	-	-
	4/14/98 8:30	29.63	-	11.0	-	1.0	-	-	-
	5/19/98 11:20	30.64	-	15.0	-	0.0	-	-	-
	6/4/98 8:44	30.52	-	6.0	-	1.0	-	-	-
	7/27/98 12:22	30.57	-	2.4	-	2.5	-	-	-
	8/4/98 12:39	30.58	-	2.5	-	2.5	-	-	-
	9/17/98 12:18	30.03	-	1.4	-	3.0	-	-	-
10/5/98 12:25	30.08	-	1.6	-	2.5	-	-	-	
11/6/98 1:00	30.39	-	-	-	2.0	-	-	4.0	
12/2/98 1:00	30.19	-	-	-	0.0	-	-	4.0	

Table A-1
Perimeter Probe Compliance Monitoring Data
South Park Landfill Site
Seattle, Washington
Farallon PN: 408-002

Monitoring Location ¹	Start Date and Time ²	Barometric (in. Hg) ³	Well Head Pressure (in. H ₂ O) ⁴	LFG Monitoring Parameters ⁵			Balance Gas (% Volume)	CO (ppm)	LEL (% CH ₄)
				CH ₄	CO ₂	O ₂			
				(% Volume)	(% Volume)	(% Volume)			
GP-20	1/6/99 10:16	29.70	-	18.0	-	0.0	-	-	-
	3/5/99 11:06	29.95	-	15.0	-	0.0	-	-	-
	4/9/99 11:59	30.80	-	12.0	-	0.0	-	-	-
	5/7/99 10:51	30.85	-	-	-	-	-	-	-
	6/23/99 10:18	30.65	-	5.0	-	0.0	-	-	-
	7/20/99 9:02	30.50	-	4.0	-	0.0	-	-	-
	8/20/99 10:20	30.65	-	3.0	-	0.0	-	-	-
	9/29/99 10:28	30.80	-	3.0	-	0.0	-	-	-
	10/15/99 14:52	30.40	-	1.3	10.9	0.0	-	-	96.0
	10/28/99 16:35	29.28	-	0.3	1.6	19.1	-	-	4.0
	11/15/99 9:10	30.35	-	1.0	-	1.0	-	-	-
	12/6/99 11:41	30.40	-	3.0	-	1.0	-	-	-
	1/11/00 12:20	30.02	-	6.0	-	0.0	-	-	-
	2/3/00 10:17	29.79	-	7.4	8.2	0.0	-	-	304.0
	2/7/00 10:07	30.42	-	10.0	-	0.0	-	-	-
	3/9/00 12:09	30.49	-	6.0	-	0.0	-	-	-
	4/7/00 9:41	30.94	-	5.0	-	0.0	-	-	-
	5/11/00 11:04	30.46	-	9.0	-	0.0	-	-	-
	6/5/00 11:30	30.38	-	4.0	-	0.0	-	-	-
	7/17/00 8:40	30.50	-	3.0	-	0.0	-	-	-
	8/3/00 9:55	29.27	-	2.7	12.9	0.3	-	-	-
	9/6/00 8:10	30.01	-	1.9	13.7	1.0	-	-	-
	10/10/00 8:35	29.42	-	1.2	12.9	3.3	-	-	-
	11/3/00 13:07	29.79	-	1.6	11.5	0.1	-	-	-
	12/6/00 14:10	29.86	-	2.6	10.6	0.0	-	-	-
	1/5/01 13:17	29.71	-	3.5	10.3	0.0	-	-	-
	2/2/01 9:55	29.86	-	4.2	10.3	0.0	-	-	-
	3/2/01 13:27	29.49	-	3.8	9.8	0.0	-	-	-
	4/6/01 12:20	28.98	-	3.0	9.1	0.2	-	-	-
	5/10/01 11:05	-	-	4.7	10.6	0.0	-	-	-
	6/4/01 11:58	29.98	-	3.5	9.4	0.0	-	-	-
	7/6/01 11:48	30.10	-	3.3	12.6	0.0	-	-	-
	8/3/01 11:55	29.94	-	2.4	12.9	0.0	-	-	-
	12/7/01 11:25	30.40	-	3.6	11.6	0.0	-	-	-
	1/11/02 15:35	-	-	4.3	9.2	0.0	-	-	-
	2/8/02 15:45	-	-	6.1	9.9	0.0	-	-	-
	3/8/02 11:40	-	-	3.9	9.8	0.0	-	-	-
	4/4/02 11:27	-	-	2.8	9.1	0.2	-	-	-
	5/6/02 15:50	30.20	-	3.7	8.9	0.0	-	-	-
	6/4/02 10:35	-	-	3.4	9.6	0.0	-	-	-
7/3/02 15:30	-	-	2.1	9.6	0.0	-	-	-	
8/2/02 12:00	-	-	1.7	10.7	0.0	-	-	-	
9/5/02 10:50	-	-	1.6	12.7	0.3	-	-	-	
10/2/02 15:50	-	-	1.5	13.2	0.4	-	-	-	
11/6/02 15:25	-	-	10.1	13.1	0.2	-	-	-	
12/9/02 13:54	-	-	2.2	12.2	0.0	-	-	-	
1/7/03 14:05	30.17	-	3.1	11.1	0.0	-	-	-	
2/5/03 15:15	30.30	-	4.0	10.6	0.0	-	-	-	
3/7/03 14:20	29.71	-	5.0	10.9	0.0	-	-	-	
4/1/03 13:35	-	-	4.4	10.3	0.0	-	-	-	
5/5/03 14:45	30.09	-	4.0	10.2	0.0	-	-	-	
6/3/03 14:10	30.21	-	2.9	10.4	0.2	-	-	-	
7/2/03 14:10	30.16	-	1.9	10.9	0.2	-	-	-	
8/5/03 13:55	30.01	-	1.8	13.7	1.1	-	-	-	

Table A-1
Perimeter Probe Compliance Monitoring Data
South Park Landfill Site
Seattle, Washington
Farallon PN: 408-002

Monitoring Location ¹	Start Date and Time ²	Barometric (in. Hg) ³	Well Head Pressure (in. H ₂ O) ⁴	LFG Monitoring Parameters ⁵			Balance Gas (% Volume)	CO (ppm)	LEL (% CH ₄)
				CH ₄	CO ₂	O ₂			
				(% Volume)	(% Volume)	(% Volume)			
GP-20	9/3/03 13:55	30.01	-	1.2	14.4	0.6	-	-	-
	10/2/03 14:35	30.03	-	1.3	14.7	0.0	-	-	-
	11/5/03 16:03	30.15	-	4.5	14.9	0.0	-	-	-
	12/4/03 14:20	29.65	-	3.8	12.7	0.2	-	-	-
	1/14/04 14:10	29.94	-	5.1	12.0	0.0	-	-	-
	2/6/04 14:05	29.98	-	5.3	11.2	0.0	-	-	-
	3/2/04 11:30	30.22	-	5.6	10.5	0.0	-	-	-
	4/5/04 15:15	30.10	-	4.1	10.3	0.1	-	-	-
	5/3/04 12:45	30.13	-	4.2	10.4	0.3	-	-	-
	6/1/04 13:05	30.11	-	3.4	10.8	0.4	-	-	-
	7/6/04 14:57	30.08	-	2.2	12.5	0.1	-	-	-
	8/6/04 12:53	29.84	-	0.5	13.6	1.8	-	-	-
	9/10/04 11:03	29.95	-	0.9	15.0	1.4	-	-	-
	2/9/11 9:30	30.45	-0.06	3.3	8.9	0.0	-	-	-
	5/22/13 15:00	29.82	0.00	2.5	7.1	0.0	-	121.0	50.0
	6/18/13 9:50	29.82	0.006	1.9	7.3	0.0	90.7	0.0	39.0
	6/19/13 13:53	29.77	0	2.1	7.2	0.0	90.8	0.0	40.0
	6/25/14 11:28	29.82	0.027	2.5	7.5	0.0	87.9	0.0	50.0
	9/2/14 11:25	29.72	0.012	4.1	10.3	0.0	85.5	-	81.0
	10/13/14 0:00	29.6	0.019	6.0	11.4	0.0	82.6	-	100.0
	11/6/14 14:47	29.85	0.046	7.4	11.4	6.5	-	-	-
	2/26/15 12:20	30.1	-0.003	0.1	14.0	0.0	-	-	-
	5/12/15 10:05	29.69	0	3.7	12.3	0.0	33.9	-	74.0
	12/17/15 13:00	29.63	-0.006	9.5	5.2	0.0	85.7	0.0	100.0
3/18/16 12:08	29.91	0.22	5.1	9.9	0.0	84.9	0.0	8.0	
6/13/16 12:54	29.93	0	0.0	8.8	5.3	85.8	0.0	0.0	
9/26/16 10:38	29.9	-0.009	1.8	15.2	0.0	82.9	0.0	35.0	
12/8/16 10:10	30.05	0.015	3.6	18.0	0.0	78.4	0.0	-	
GP-21	10/15/99 to 9/10/04	-	-	0.0	0.0	0.0	-	-	-
	10/15/99 to 9/10/04	-	-	23.0	27.0	21.0	-	-	-
	10/15/99 14:33	30.40	-	19.8	25.5	0.1	-	-	396.0
	10/28/99 17:35	29.28	-	0.2	0.1	21.4	-	-	4.0
	11/15/99 9:17	30.35	-	19.0	-	0.0	-	-	-
	12/6/99 11:53	30.40	-	19.0	-	0.0	-	-	-
	1/11/00 12:25	30.02	-	14.0	-	0.0	-	-	-
	2/3/00 9:35	29.79	-	17.4	20.3	0.0	-	-	348.0
	2/7/00 9:46	30.42	-	15.0	-	0.0	-	-	-
	3/9/00 12:13	30.49	-	15.0	-	0.0	-	-	-
	4/7/00 9:27	30.94	-	5.0	-	13.0	-	-	-
	5/11/00 11:08	30.46	-	14.0	-	0.0	-	-	-
	6/5/00 10:58	30.38	-	15.0	-	0.0	-	-	-
	7/17/00 8:31	30.50	-	17.0	-	0.0	-	-	-
	8/2/00 11:20	29.71	-	14.9	20.3	0.3	-	-	298.0
	9/5/00 10:20	29.86	-	17.9	22.4	0.0	-	-	-
	10/10/00 8:05	29.20	-	18.5	23.3	0.0	-	-	-
	11/3/00 13:47	29.86	-	19.7	23.5	0.1	-	-	-
	12/6/00 14:44	29.64	-	22.5	24.4	0.0	-	-	-
	1/5/01 13:55	29.79	-	22.1	22.6	0.0	-	-	-
	2/2/01 10:35	29.79	-	21.8	22.3	0.0	-	-	-
	3/2/01 14:00	29.42	-	19.7	21.4	0.0	-	-	-
	4/6/01 13:18	29.13	-	16.2	19.8	0.2	-	-	-
	5/10/01 11:50	-	-	22.8	26.5	0.0	-	-	-
	6/4/01 12:35	29.98	-	18.1	20.4	0.0	-	-	-
	7/6/01 12:30	30.10	-	18.7	22.0	0.0	-	-	-
	8/3/01 13:09	29.94	-	17.9	22.3	0.0	-	-	-
	9/7/01 12:02	30.25	-	20.1	23.0	0.0	-	-	-
	10/8/01 10:50	-	-	22.6	24.5	0.0	-	-	-
11/5/01 11:05	-	-	19.4	23.8	0.0	-	-	-	
12/7/01 12:04	30.40	-	18.6	22.8	0.0	-	-	-	
1/11/02 16:20	-	-	17.3	19.5	0.0	-	-	-	
2/8/02 16:30	-	-	12.0	16.7	1.8	-	-	-	

Table A-1
Perimeter Probe Compliance Monitoring Data
South Park Landfill Site
Seattle, Washington
Farallon PN: 408-002

Monitoring Location ¹	Start Date and Time ²	Barometric (in. Hg) ³	Well Head Pressure (in. H ₂ O) ⁴	LFG Monitoring Parameters ⁵			Balance Gas (% Volume)	CO (ppm)	LEL (% CH ₄)
				CH ₄	CO ₂	O ₂			
				(% Volume)	(% Volume)	(% Volume)			
GP-21	3/8/02 12:30	-	-	15.3	18.5	0.0	-	-	-
	4/4/02 12:10	-	-	0.0	0.0	20.4	-	-	-
	5/6/02 16:30	30.20	-	14.7	17.4	0.0	-	-	-
	6/4/02 11:20	-	-	18.8	18.4	0.0	-	-	-
	7/3/02 16:16	-	-	16.8	20.5	0.0	-	-	-
	8/2/02 10:40	-	-	17.6	20.3	0.0	-	-	-
	9/5/02 11:27	-	-	17.0	20.9	0.4	-	-	-
	10/2/02 16:10	-	-	17.6	22.1	0.3	-	-	-
	11/6/02 16:10	-	-	17.5	23.0	0.0	-	-	-
	12/9/02 16:49	-	-	20.1	23.6	0.0	-	-	-
	1/7/03 14:45	-	-	15.0	21.7	0.0	-	-	-
	2/5/03 15:48	30.29	-	13.6	19.9	0.0	-	-	-
	3/7/03 15:00	29.71	-	15.6	19.0	0.0	-	-	-
	4/1/03 14:10	29.59	-	12.8	18.3	0.0	-	-	-
	5/5/03 15:20	30.07	-	15.3	17.0	0.0	-	-	-
	6/3/03 14:55	30.20	-	16.0	18.9	0.1	-	-	-
	7/2/03 15:00	30.16	-	15.2	19.7	0.1	-	-	-
	8/5/03 15:00	30.00	-	13.4	20.2	0.0	-	-	-
	9/3/03 14:35	30.01	-	14.4	21.4	0.1	-	-	-
	10/2/03 15:15	30.03	-	17.3	22.8	0.0	-	-	-
	11/5/03 16:45	30.15	-	20.7	23.8	0.0	-	-	-
	12/4/03 15:10	29.63	-	15.7	22.8	0.0	-	-	-
	1/14/04 15:00	30.03	-	14.9	20.3	0.0	-	-	-
	2/6/04 14:45	29.98	-	10.2	18.3	0.0	-	-	-
	3/2/04 12:05	30.23	-	12.8	17.2	0.0	-	-	-
	4/5/04 15:58	-	-	13.8	17.8	0.1	-	-	-
	5/3/04 13:25	30.14	-	16.1	17.9	0.4	-	-	-
	6/1/04 14:05	30.13	-	14.8	19.4	0.3	-	-	-
	7/6/04 15:30	30.05	-	15.4	20.3	0.1	-	-	-
	8/6/04 14:15	29.87	-	13.1	20.1	0.0	-	-	-
	9/10/04 11:37	29.95	-	16.6	21.8	0.2	-	-	-
	2/9/11 10:35	30.44	-0.07	20.0	17.6	0.0	-	-	-
5/22/13 13:35	29.81	0.01	15.8	14.3	0.0	-	25.0	-	
6/18/13 13:14	29.80	0.02	0.0	17.0	20.2	75.6	0.0	-	
6/25/14 10:10	29.85	0.04	19.8	17.6	0.0	62.7	0.0	-	
9/2/14 16:00	29.63	0.02	14.9	18.9	0.0	66.1	-	100.0	
10/13/14 0:00	29.55	-	19.4	19.0	0.0	61.4	-	100.0	
11/6/14 16:48	29.93	-	14.3	11.3	-	-	-	-	
2/26/15 13:05	30.00	0.00	0.0	0.4	17.7	-	-	-	
5/12/15 0:00	29.69	-0.01	14.7	16.0	0.0	69.2	-	100.0	
12/17/15 0:00	29.69	0.00	29.4	17.8	0.0	52.7	0.0	100.0	
1/0/00 0:00	29.84	nm	25.6	15.7	0.0	58.6	0.0	-	
6/13/16 0:00	29.92	-0.01	1.0	17.5	0.0	81.4	0.0	19.0	
9/26/16 9:45	29.93	0.00	1.2	17.6	0.0	81.2	0.0	23.0	
12/8/16 9:13	30.08	0.06	4.5	18.5	0.0	76.9	0.0	90.0	
GP-22	10/15/99 to 9/10/04	-	-	0.2	0.0	0.0	-	-	-
	10/15/99 to 9/10/04	-	-	15.0	31.0	21.0	-	-	-
	10/15/99 14:25	30.40	-	9.2	21.0	0.0	-	-	184.0
	10/28/99 17:05	29.57	-	0.2	0.0	21.4	-	-	4.0
	11/15/99 9:30	30.35	-	9.0	-	0.0	-	-	-
	12/6/99 11:49	30.40	-	7.0	-	0.0	-	-	-
	1/11/00 12:28	30.02	-	4.0	-	0.0	-	-	-
	2/3/00 10:00	29.79	-	7.0	11.2	0.0	-	-	140.0
	2/7/00 9:51	30.42	-	5.0	-	0.0	-	-	-
	3/9/00 12:17	30.49	-	6.0	-	0.0	-	-	-
	4/7/00 9:22	30.94	-	3.0	-	13.0	-	-	-
	5/11/00 11:13	30.46	-	7.0	-	0.0	-	-	-
	6/5/00 11:03	30.38	-	8.0	-	0.0	-	-	-
	7/17/00 8:35	30.50	-	9.0	-	0.0	-	-	-
8/3/00 9:30	29.71	-	10.0	20.4	0.2	-	-	-	
9/5/00 10:15	29.64	-	8.8	21.0	0.0	-	-	-	

Table A-1
Perimeter Probe Compliance Monitoring Data
South Park Landfill Site
Seattle, Washington
Farallon PN: 408-002

Monitoring Location ¹	Start Date and Time ²	Barometric (in. Hg) ³	Well Head Pressure (in. H ₂ O) ⁴	LFG Monitoring Parameters ⁵			Balance Gas (% Volume)	CO (ppm)	LEL (% CH ₄)
				CH ₄	CO ₂	O ₂			
				(% Volume)	(% Volume)	(% Volume)			
GP-22	10/10/00 7:55	29.35	-	8.4	20.5	0.0	-	-	-
	11/3/00 13:35	29.35	-	10.4	19.2	0.1	-	-	-
	12/6/00 14:30	29.71	-	11.3	16.8	0.0	-	-	-
	1/5/01 13:44	29.86	-	11.6	15.7	0.0	-	-	-
	2/2/01 10:15	29.64	-	13.1	16.6	0.0	-	-	-
	3/2/01 13:50	29.42	-	11.0	15.6	0.0	-	-	-
	4/6/01 12:50	29.20	-	10.8	15.2	0.7	-	-	-
	5/10/01 11:35	-	-	15.0	21.2	0.0	-	-	-
	6/4/01 12:25	29.98	-	11.9	17.9	0.0	-	-	-
	7/6/01 12:20	30.10	-	11.3	20.1	0.0	-	-	-
	8/3/01 12:43	29.94	-	10.4	30.7	0.0	-	-	-
	9/7/01 11:54	30.25	-	12.2	20.4	0.0	-	-	-
	10/8/01 10:32	-	-	11.6	21.1	0.0	-	-	-
	11/5/01 10:45	-	-	8.6	14.6	4.2	-	-	-
	12/7/01 11:55	30.40	-	8.2	13.2	0.0	-	-	-
	1/11/02 16:00	-	-	7.1	9.8	1.7	-	-	-
	2/8/02 16:15	-	-	3.5	8.7	4.1	-	-	-
	3/8/02 12:07	-	-	5.0	10.3	3.1	-	-	-
	4/4/02 11:55	-	-	6.3	12.2	0.2	-	-	-
	5/6/02 14:20	30.20	-	6.4	12.3	0.0	-	-	-
	6/4/02 11:00	-	-	2.8	5.7	12.4	-	-	-
	7/3/02 15:55	-	-	7.0	14.2	3.3	-	-	-
	8/2/02 11:20	-	-	8.8	19.1	0.0	-	-	-
	9/5/02 11:17	-	-	8.5	20.2	0.3	-	-	-
	10/2/02 16:00	-	-	7.1	19.4	0.4	-	-	-
	11/6/02 15:50	-	-	4.0	14.1	5.1	-	-	-
	12/9/02 16:34	-	-	10.3	18.0	0.0	-	-	-
	1/7/03 14:35	30.17	-	7.2	12.5	0.0	-	-	-
	2/5/03 15:40	30.28	-	6.6	11.3	0.0	-	-	-
	3/7/03 14:40	29.70	-	8.3	12.9	0.0	-	-	-
	4/1/03 13:58	29.61	-	7.1	11.6	0.0	-	-	-
	5/5/03 15:10	30.06	-	7.3	12.7	0.0	-	-	-
	6/3/03 14:45	30.20	-	8.8	15.7	0.1	-	-	-
	7/2/03 14:50	30.16	-	8.7	19.7	0.2	-	-	-
	8/5/03 14:25	30.00	-	9.1	22.5	9.0	-	-	-
	9/3/03 14:25	30.01	-	7.5	22.1	0.1	-	-	-
	10/2/03 15:00	30.03	-	7.2	21.1	0.0	-	-	-
	11/5/03 16:32	30.15	-	7.1	18.2	0.0	-	-	-
	12/4/03 14:49	29.65	-	7.1	13.5	0.6	-	-	-
	1/14/04 14:40	29.93	-	6.5	11.1	0.3	-	-	-
2/6/04 14:30	29.98	-	6.0	11.2	0.0	-	-	-	
3/2/04 11:55	30.20	-	7.6	12.1	0.1	-	-	-	
4/5/04 15:45	30.10	-	9.0	14.0	0.1	-	-	-	
5/3/04 13:15	30.14	-	10.4	15.6	0.7	-	-	-	
6/1/04 13:40	30.11	-	8.2	15.9	3.1	-	-	-	
7/6/04 15:20	30.10	-	9.9	21.6	0.1	-	-	-	
8/6/04 13:40	29.87	-	8.1	21.0	0.5	-	-	-	
9/10/04 11:27	29.95	-	10.5	21.9	0.2	-	-	-	
2/9/11 10:55	30.44	0.01	7.1	11.3	0.0	-	-	-	
5/22/13 13:00	29.82	-0.004	8.6	13.5	0.0	-	62.0	-	
6/18/13 12:23	29.81	0.00	9.9	14.9	0.0	75.8	0.0	-	
9/2/14 16:10	29.63	-	9.5	16.5	0.0	73.9	-	100.0	
10/13/14 17:00	29.53	0.04	14.5	15.9	0.0	69.5	-	100.0	
2/26/15 14:00	29.99	-0.01	1.3	5.9	2.0	-	-	-	
5/12/15 13:00	29.64	-	17.1	10.3	0.0	72.7	-	100.0	
12/17/15 12:33	29.69	0.00	23.6	16.2	0.0	60.2	0.0	100.0	
3/18/16 14:21	29.84	-	19.3	10.6	0.0	70.0	-	-	
5/11/16 11:03	30.01	-0.06	7.3	11.1	0.0	81.6	0.0	-	
6/13/16 15:10	29.92	-0.01	3.3	10.2	0.0	86.5	0.0	65.0	
9/26/16 9:20	29.95	0.00	2.3	11.5	0.0	86.6	0.0	45.0	
12/8/16 8:54	30.08	-0.20	5.3	9.5	0.0	85.1	0.0	-	
GP-23	3/18/16 0:00			Flooded Well Screen					
GP-24	3/18/16 13:20	29.87	0.00	0.0	0.0	20.6	79.4	-	-
GP-25	3/18/16 13:09	29.87	nm	43.3	0.0	5.4	50.9	0.0	-

Table A-1
Perimeter Probe Compliance Monitoring Data
South Park Landfill Site
Seattle, Washington
Farallon PN: 408-002

Monitoring Location ¹	Start Date and Time ²	Barometric (in. Hg) ³	Well Head Pressure (in. H ₂ O) ⁴	LFG Monitoring Parameters ⁵			Balance Gas (% Volume)	CO (ppm)	LEL (% CH ₄)
				CH ₄	CO ₂	O ₂			
				(% Volume)	(% Volume)	(% Volume)			
GP-27	2/7/11 11:40	30.09	-0.01	6.1	7.8	0.9	-	-	-
	2/17/11 12:35	29.73	0.13	2.9	4.7	9.1	-	-	-
	2/21/11 12:30	29.90	0.10	3.1	4.8	9.1	-	-	-
	5/11/11 12:12	29.73	0.05	6.5	8.3	0.1	-	-	-
	5/25/11 0:00	29.68	-0.08	2.6	4.0	11.1	-	-	-
	6/27/11 0:00	29.69	0.12	6.3	8.9	0.0	-	-	-
	9/23/11 0:00	29.98	0.10	4.3	11.4	0.0	-	-	-
	11/17/11 0:00	29.76	-0.17	3.3	8.4	5.2	-	-	-
	12/28/11 0:00	29.92	0.0	6.0	11.9	0.0	-	-	-
	5/22/13 17:13	29.8	-	5.1	7.4	1.0	86.5	30.0	-
	6/25/14 12:45	29.79	-	0.6	6.9	6.4	86.2	30.0	7.0
	9/2/14 13:30	29.69	-	1.5	12.7	0.0	85.8	-	29.0
	10/13/14 10:05	29.73	-0.025	2.1	13.4	0.0	-	-	29.0
	11/6/14 14:18	29.85	0.027	1.5	12.8	0.0	-	-	-
	2/26/15 9:00	30.16	0.000	0.0	5.0	10.8	-	-	-
	5/12/15 9:25	29.69	0.000	0.6	10.4	0.0	88.9	-	-
	12/17/15 9:20	29.79	-0.050	0.9	12.5	0.0	86.5	-	18.00
3/18/16 10:24	30.01	nm	0.4	9.8	0.0	89.7	20.0	1.00	
6/13/16 12:09	29.95	NM	0.1	11.8	0.0	88.1	0.0	0.00	
9/26/16 11:22	29.93	0.005	0.0	14.0	0.0	86.0	0.0	0.00	
12/8/16 10:49	30.05	0.009	0.5	15.5	0.0	84.0	0.0	-	
GP-28	2/7/11 13:30	30.11	0.01	0.0	3.1	8.1	-	-	-
	2/21/11 12:45	29.89	0.10	0.0	2.0	15.3	-	-	-
	5/11/11 10:50	29.73	0.05	0.5	5.4	0.4	-	-	-
	5/25/11 0:00	29.70	-0.05	0.6	3.1	11.7	-	-	-
	6/27/11 0:00	29.70	0.06	2.8	7.7	0.0	-	-	-
	9/23/11 0:00	29.99	0.06	0.2	8.9	2.8	-	-	-
	11/17/11 0:00	29.73	-0.19	0.1	8.9	4.2	-	-	-
	12/28/11 0:00	29.94	-0.01	0.0	6.2	4.9	-	-	-
	5/22/13 17:01	29.8	0	0.1	5.6	0.2	94.1	5.0	2.0
	6/25/14 12:55	29.79	-	0.0	6.8	0.4	92.5	6.0	0.0
	9/2/14 13:45	29.67	-	0.0	11.1	0.9	88.0	-	0.0
	10/13/14 0:00	29.71	0.004	0.0	11.0	0.0	88.9	-	0.0
	11/6/14 14:01	29.85	0.026	0.2	6.4	0.4	-	-	-
	2/26/15 8:51	30.16	0	0.0	1.7	11.8	-	-	-
	5/12/15 9:15	29.69	0	0.1	3.2	7.4	89.0	-	0.0
	12/17/15 9:39	29.79	0.003	0.0	1.5	12.0	86.5	0.0	0.0
	3/18/16 10:38	30.01	-	0.0	2.0	12.7	85.2	21.0	0.0
6/13/16 11:58	29.95	-	0.0	5.0	9.3	85.6	0.0	0.0	
9/26/16 11:47	29	0	0.0	7.2	6.5	86.2	0.0	0.0	
12/8/16 11:05	30.05	0	0.1	3.9	6.9	89.0	0.0	1.0	
GP-29	2/7/11 14:35	30.10	0.06	7.1	12.5	0.0	-	-	-
	2/21/11 13:00	29.89	0.09	3.6	6.9	9.0	-	-	-
	5/11/11 0:00	29.73	-0.03	6.9	12.2	0.3	-	-	-
	5/25/11 0:00	29.7	-0.06	2.4	4.1	12.6	-	-	-
	6/27/11 0:00	29.68	0.11	8.5	13.1	0.0	-	-	-
	9/23/11 0:00	29.99	0.03	7.2	14.2	0.0	-	-	-
	11/17/11 0:00	29.73	-0.22	7.1	12.2	3.7	-	-	-
	12/28/11 0:00	29.95	-0.11	8.1	15.1	0.0	-	-	-
	5/22/13 16:48	29.8	-	7.9	12.5	0.0	-	41.0	-
	6/25/14 13:20	29.79	-	6.6	12.8	0.0	80.4	-	-
	9/2/14 14:10	29.67	-	8.1	16.6	0.5	74.9	-	100.0
	10/13/14 10:55	29.71	0.003	8.5	16.9	0.0	-	-	100.0
	11/6/14 13:39	29.85	-0.047	8.9	14.9	0.0	-	-	-
	1/28/15 14:00	30.03	-	1.0	14.9	0.0	-	-	-
	2/26/15 8:04	30.16	0	1.4	13.3	0.0	-	-	-
	2/26/15 13:41	29.99	0	1.0	9.9	28.0	-	-	-
	5/12/15 9:01	29.69	0	4.9	14.3	0.0	80.8	-	99.0
	11/17/15 0:00	29.58	0	10.6	16.5	0.0	72.8	-	100.0
	12/17/15 10:44	29.73	0	6.2	12.4	0.4	80.8	0.0	100.0
	2/17/16 9:34	29.36	0.000	2.9	12.2	0.0	84.8	0.0	-
3/1/16 10:20	29.63	0.000	1.3	10.6	0.0	87.9	0.0	-	
3/18/16 10:51	30.02	-	1.7	11.2	0.0	87.0	13.0	13.0	
4/13/16 12:20	30.01	0.000	2.2	9.2	0.0	88.5	0.0	0.0	
5/11/16 12:00	30.01	0.000	1.2	12.2	0.0	86.6	0.0	-	
6/13/16 11:42	29.95	-	0.4	16.1	0.0	83.4	0.0	8.0	
9/26/16 12:26	29.93	-0.009	0.0	15.5	0.0	84.4	0.0	0.0	
12/8/16 13:00	29.97	0.000	3.4	17.3	0.0	79.3	1.0	67.0	

Table A-1
Perimeter Probe Compliance Monitoring Data
South Park Landfill Site
Seattle, Washington
Farallon PN: 408-002

Monitoring Location ¹	Start Date and Time ²	Barometric (in. Hg) ³	Well Head Pressure (in. H ₂ O) ⁴	LFG Monitoring Parameters ⁵			Balance Gas (% Volume)	CO (ppm)	LEL (% CH ₄)
				CH ₄	CO ₂	O ₂			
				(% Volume)	(% Volume)	(% Volume)			
GP-30	5/11/11 10:01	29.74	0.02	0.0	0.1	20.2	84.4	293.0	0.0
	6/25/14 13:30	29.79	0.00	0.0	2.6	13.0	-	-	-
	9/2/14 14:00	29.67	-	0.0	0.3	21.4	78.6	-	0.0
	10/13/14 11:25	29.71	0	0.0	0.1	20.4	79.4	-	0.0
	2/26/15 11:17	30.1	0.07	0.0	0.2	21.3	-	-	-
	5/12/15 9:20	29.69	0	0.1	0.2	21.0	78.6	-	2.0
	12/17/15 0:00	29.69	Flooded Well Screen						
GP-31	5/11/11 9:22	29.75	0.02	0.0	0.1	19.9	-	-	-
	5/25/11 0:00	29.72	-0.05	0.0	0.1	20.30	-	-	-
	6/27/11 0:00	29.72	0.08	0.0	9.6	6.60	-	-	-
	9/23/11 0:00	29.97	0.05	0.0	14.7	4.40	-	-	-
	11/17/11 0:00	29.61	-0.42	0.0	10.4	7.50	-	-	-
	12/28/11 0:00	29.56	-0.22	0.0	8.0	3.70	-	-	-
	5/22/13 18:18	29.8	-	0.1	0.2	21.5	78.0	12.0	2.0
	6/25/14 13:45	29.79	-	0.0	1.0	17.8	80.5	-	-
	9/2/14 14:40	29.67	-	0.0	11.6	7.2	81.9	-	0.0
	10/13/14 11:55	29.71	0.01	0.0	13.5	4.9	81.4	-	0.0
	2/26/15 11:00	30.1	0.005	0.0	0.5	20.8	-	-	-
	5/12/15 13:10	29.63	0	0.2	9.8	9.0	80.9	-	4.0
	12/17/15 11:40	29.7	-	0.8	0.0	19.9	80.9	0.0	4.0
	3/18/16 11:10	30.02	-	0.0	0.5	20.9	78.6	9.0	0.0
6/13/16 14:20	29.93	0	0.1	16.2	4.1	79.5	0.0	2.0	
9/26/16 13:25	29.88	0.003	0.0	12.8	5.4	81.6	0.0	0.0	
12/8/16 13:20	29.97	-0.039	0.2	1.1	21.9	76.8	0.0	-	
GP-32	9/2/14 16:20	29.63	-	0.0	0.1	20.8	79.0	-	0.0
	10/13/14 13:40	29.63	-	0.0	0.0	20.6	79.4	-	0.0
	2/26/15 10:40	30.1	0	0.0	0.2	20.9	-	-	-
	5/12/15 13:25	29.63	0	0.3	0.1	21.5	77.9	-	6.0
	12/17/15 11:36	29.7	-	0.0	0.2	22.5	77.3	-	6.0
	3/18/16 11:00	-	Flooded Well Screen						
	6/13/16 16:25	29.91	Flooded Well Screen						
	9/26/16 13:58	29.86	-0.815	0	0	21.4	78.5	-	0
12/8/16 13:55	-	Flooded Well Screen							
GP-33	5/22/13 12:24	29.84	-0.15	1.5	11.7	3.3	83.5	293.0	29.0
	6/18/13 11:49	29.82	0	0.0	12.8	5.0	82.1	0.0	0.0
	6/19/13 11:43	29.01	-0.004	0.0	13.7	4.3	81.9	0.0	0.0
	6/25/14 16:10	29.72	0.018	0.0	13.7	1.2	85.0	0.0	0.0
	10/13/14 17:00	29.55	-0.013	4.9	16.5	0.0	78.7	-	97.0
	11/6/14 16:24	29.93	0.033	0.0	1.2	18.9	-	-	-
	2/26/15 13:25	30	0.014	0.0	7.2	3.5	-	-	-
	5/12/15 12:10	29.63	0	7.6	6.5	10.3	75.3	-	100.0
	12/17/15 12:20	29.69	-0.07	18.7	3.8	0.1	77.4	0.0	100.0
	3/18/16 9:15	30.03	-	19.8	7.0	0.0	73.1	4.0	-
	3/18/16 14:00	-	-	18.2	5.5	0.0	76.2	-	-
	4/13/16 11:55	30.01	0.059	22.0	11.3	0.0	66.6	-	-
	5/11/16 10:46	30.06	-0.05	4.6	9.7	0.0	85.6	10.0	-
	6/13/16 15:25	29.92	-0.03	0.0	1.4	20.4	78.1	9.0	0.0
6/28/16 11:18	30.09	-0.033	0.1	10.6	0.8	88.4	-	-	
9/26/16 9:05	29.95	-0.019	0.0	10.6	0.1	89.3	0.0	0.0	
12/8/16 8:40	30.08	0.023	4.5	4.6	0.0	90.9	0.0	90.0	

Table A-1
Perimeter Probe Compliance Monitoring Data
South Park Landfill Site
Seattle, Washington
Farallon PN: 408-002

Monitoring Location ¹	Start Date and Time ²	Barometric (in. Hg) ³	Well Head Pressure (in. H ₂ O) ⁴	LFG Monitoring Parameters ⁵			Balance Gas (% Volume)	CO (ppm)	LEL (% CH ₄)
				CH ₄	CO ₂	O ₂			
				(% Volume)	(% Volume)	(% Volume)			
GP-34	5/22/13 13:54	29.81	0.005	22.0	9.2	0.0	-	395.0	-
	6/18/13 8:21	29.77	0.004	12.1	10.1	0.0	77.7	0.0	-
	6/25/14 10:40	29.83	0.025	13.7	8.7	0.0	77.8	0.0	-
	9/2/14 15:40	29.63	0.005	11.6	11.1	0.0	77.3	-	100.0
	10/13/14 0:00	29.55	0.045	11.9	11.2	0.0	76.9	-	100.0
	2/26/15 12:40	29.99	0.033	1.5	12.8	0.0	-	-	-
	5/12/15 10:45	29.69	-0.011	25.7	11.5	0.0	63.0	-	100.0
	12/17/15 0:00	29.69	Flooded Well Screen						
	5/11/16 11:12	30.06	-0.877	4.7	15.2	0.0	NM	7.0	-
	6/13/16 14:35	29.92	-0.502	1.1	18.8	0.0	80.1	17.0	0.0
	9/26/16 9:58	29.93	-0.003	1.5	19.0	0.0	79.5	66.0	29.0
12/8/16 9:30	30.05	0.05	6.9	20.0	0.0	73.1	0.0	-	
GP-35	5/22/13 14:31	29.81	0	3.4	4.7	0.0	-	600.0	70.0
	6/18/13 14:04	29.79	0.006	1.0	4.6	0.0	94.3	0.0	20.0
	6/19/13 8:32	29.81	-0.006	1.6	5.4	0.6	92.4	0.0	30.0
	6/25/14 11:05	29.82	0.022	1.7	4.0	0.0	94.0	0.0	34.0
	9/2/14 10:45	29.71	0.008	4.1	4.9	0.0	90.9	-	81.0
	10/13/14 14:20	29.6	0.02	5.4	5.1	0.0	89.4	-	100.0
	11/6/14 17:02	29.93	-0.041	6.7	5.2	0.0	-	-	-
	2/26/15 12:28	30.1	0	0.9	5.0	0.0	-	-	-
	5/12/15 10:15	29.69	0	2.1	4.9	0.0	93.0	-	41.0
	12/17/15 14:10	29.63	-0.003	9.5	5.3	0.0	85.1	0.0	100.0
	3/18/16 0:00	29.91	-	10.8	4.1	0.0	85.0	-	-
	5/11/16 11:37	30.01	-0.02	8.8	10.1	0.0	81.1	0.0	-
	6/13/16 12:34	29.92	-0.003	4.2	13.4	0.0	8.3	0.0	83.0
9/26/16 10:15	29.93	-0.005	1.4	12.4	0.0	86.2	0.0	2.0	
12/8/16 9:52	30.05	0.016	3.8	12.4	0.0	83.7	1.0	76.0	
GP-36	5/22/13 16:05	29.81	0	0.5	13.4	0.0	-	173.0	12.0
	6/18/13 16:01	29.76	-0.004	0.0	15.0	0.4	84.5	0.0	0.0
	6/19/13 13:10	29.77	-0.006	0.0	15.8	0.6	83.5	0.0	0.0
	6/25/14 11:45	29.82	0.019	0.8	13.8	0.0	85.4	0.0	15.0
	9/2/14 11:35	29.72	0.8	2.2	17.1	0.0	80.7	-	44.0
	10/13/14 14:40	29.6	0.026	4.6	18.9	0.0	76.5	-	91.0
	2/26/15 12:05	30.1	-0.005	0.6	14.8	0.0	-	-	-
	5/12/15 9:50	29.69	0	4.7	14.5	0.0	80.7	-	-
	12/17/15 14:40	29.63	0	2.6	3.9	0.0	80.0	0.0	52.0
	3/18/16 12:29	29.86	0.015	0.0	0.0	19.9	79.9	-	-
	6/13/16 0:00	29.93	0	0.1	0.5	20.6	78.8	0.0	0.0
	9/26/16 10:46	29.93	0.018	0.0	0.0	20.2	79.8	0.0	0.0
12/8/16 10:23	30.05	0	0.0	0.6	20.7	78.5	0.0	-	

Table A-1
Perimeter Probe Compliance Monitoring Data
South Park Landfill Site
Seattle, Washington
Farallon PN: 408-002

Monitoring Location ¹	Start Date and Time ²	Barometric (in. Hg) ³	Well Head Pressure (in. H ₂ O) ⁴	LFG Monitoring Parameters ⁵			Balance Gas (% Volume)	CO (ppm)	LEL (% CH ₄)
				CH ₄	CO ₂	O ₂			
				(% Volume)	(% Volume)	(% Volume)			
GP-37	3/18/16 9:55	30.03	-	0.0	12.3	4.6	82.9	22.0	-
Gp-38	3/18/16 9:49	30.03	-	0.0	10.7	2.0	87.2	10.0	-
MH-1 (2 ft below rim)	5/22/13 18:28	29.8	-	0.2	0.1	21.3	78.2	36.0	3.0
MH-1 (4 ft below rim)	5/22/13 18:28	29.8	-	0.2	0.0	21.8	77.9	0.0	2.0
MH-1 (6 ft below rim)	5/22/13 18:28	29.8	-	0.1	0.0	21.7	77.9	0.0	2.0
MH-1 (3ft Below rim)	10/13/14 0:00	29.6	-	0.0	0.4	20.3	79.2	-	2.0
MH-1 (4 ft below rim)	3/18/16 15:35	-	-	0.0	0.6	21.0	-	-	-
MH-1 (3ft Below rim)	6/13/16 16:50	-	-	0.0	0.0	20.6	-	-	-
MH-2 (2ft)	5/22/13 18:01	29.8	-	0.2	0.1	20.6	78.4	4.0	3.0
	6/25/14 15:40	29.72	-	0.0	0.0	20.3	79.6	0.0	0.0
	3/18/16 15:30	29.82	-	0.0	0.1	21.3	78.6	-	-
Screening Level²				5.0	NA	NA	NA	NA	100

NOTES:

Results in **bold** denote that monitoring results are equal to or exceed the Lower Explosive Limit.

- denotes no data available.

¹ Monitoring Locations are those identified for compliance monitoring in the *Interim Action Compliance Monitoring Plan, Appendix C of the Interim Action Work Plan, South Park Landfill Site, Seattle, Washington* dated February 22, 2013, prepared by Farallon Consulting, L.L.C. (Farallon).

² Monitoring data following May 22, 2013 were collected by Farallon. All prior data were collected by Floyd Snider; Aspect Consulting LLC; Associated Earth Sciences, Inc; Herrera Environmental Consultants, Inc.; and King County Solid Waste Division.

³ Barometric pressure data following May 22, 2013 were collected by Farallon using the GEM 2000.

⁴ Well head pressure was measured using the Dwyer 475-2-FM Series 475 MK III Handheld Digital Manometer.

⁵ All data following May 22, 2013 were collected by Farallon using the GEM 2000, calibrated prior to monitoring.

% = percent

CH₄ = methane

CO = carbon monoxide

CO₂ = carbon dioxide

H₂O = water

Hg = mercury

in. = inches

LEL = lower explosive limit

LFG = landfill gas

O₂ = oxygen

ppm = parts per million