

One Convention Place, 701 Pike Street, Suite 1200
Seattle, Washington 98101

Tel: (206) 624-0100
Fax: (206) 749-2200

RECEIVED
DEPT. OF ECOLOGY/SWRD

'04 FEB -2 10:58

January 22, 2004

BROWN AND
CALDWELL

Mr. John Van Vlear, Esq., R.E.A.
Voss, Cook & Thel, LLP
895 Dove Street, Suite 450
Newport Beach, California

54-24716/002

Subject: Fourth Quarter 2003 Groundwater Monitoring Update
Lakewood Towne Center
5731 Main Street SW
Lakewood, Washington

Dear Mr. Van Vlear:

This letter report summarizes quarterly groundwater monitoring and enhanced bioremediation activities performed at the above-referenced site. This work is done as part of the continuing evaluation of groundwater quality in response to elevated chlorinated solvent concentrations found in shallow groundwater.

Executive Summary

Low-level concentrations of various volatile organic compounds (VOCs) have been detected in both soil and groundwater at the Lakewood Towne Center (the Site). These VOCs apparently originated from current and historic operations of dry cleaning facilities on the Site.

Tetrachloroethylene or perchloroethylene (PCE) and its associated degradation products (trichloroethylene [TCE], cis 1,2 dichloroethylene [cis 1,2 DCE] and vinyl chloride) appear to be the main contaminants of concern (COC) at the Site. Some reported concentrations exceed established Washington Department of Ecology (DOE) Model Toxics Control Act (MTCA) cleanup levels.

Brown and Caldwell completed installation of hydrogen release compound (HRC[®]) to further promote the biodegradation of COC. In addition to the HRC installation, Brown and Caldwell also completed quarterly groundwater monitoring activities for the fourth quarter of 2003.

Depth to groundwater (DTG) ranges from approximately 9 feet to 18 feet below ground surface (bgs). In general, reported COC concentrations have remained relatively stable when compared to previous data. However, analytical laboratory test results of the groundwater sample from monitoring well MW-1s indicated a

decrease in COC concentrations with the exception of vinyl chloride (VC), which increased slightly. As biodegradation of COC continues, enhanced by the addition of HRC[®], this trend of reduction of most contaminant levels is expected to continue.

Background

Herrera Environmental Consultants, Inc. (Herrera) initiated site investigation activities at the Lakewood Towne Center located in Lakewood, Washington in the spring of 2000. Herrera performed a Phase I Environmental Site Assessment (ESA) in May 2000. Herrera also conducted Phase II ESA activities, which included collection of soil samples from soil borings, installation of seven groundwater monitoring wells (MW-1s, MW-1m, and MW-1d through MW-5) across the northwestern portion of the mall property, and quarterly groundwater monitoring. Groundwater monitoring well locations are indicated on Figure 1. Based on analytical results of samples collected during field investigations conducted by Herrera, tetrachloroethene (or perchloroethene [PCE]) and its degradation by-products were detected in shallow groundwater in the northwestern portion of the site. The source zone was identified as shallow groundwater near the former East Concourse building, which was occupied by a dry cleaning operation between 1968 and 1987. The groundwater monitoring well locations relative to the source area and sampling frequency are as follows:

- MW-1s (shallow) [quarterly], MW-1m (mid depth) [annually], MW-1d (deep) [annually] in the source area.
- MW-2d (deep) [quarterly] upgradient of the source area.
- MW-3 (shallow) [quarterly] at the northwest property boundary, (approximately 1,300 feet downgradient of the source area).
- MW-4 (shallow) [quarterly] immediately downgradient of the source area.
- MW-5 (shallow) [quarterly] immediately downgradient of the source area.

As reported in Herrera's most recent quarterly groundwater monitoring report (September 2003) laboratory data indicate residual concentrations of PCE and PCE degradation by-products in the vicinity of monitoring wells MW-1s and MW-4.

Hydrogen Release Compound Installation

On October 30, 2003, Brown and Caldwell and their subcontractor, Cascade Drilling of Woodinville, Washington mobilized to the site to inject HRC[®] into the subsurface to assist biodegradation of residual groundwater contaminants in the vicinity of monitoring wells MW-1s and MW-4. Direct push sampling equipment was used to install temporary boreholes at six locations hydraulically upgradient of monitoring well MW-1s and MW-4. The amount of

HRC[®] used in each borehole was determined using formulas supplied by the manufacturer. HRC[®] installation boreholes are shown on Figure 2.

Groundwater Monitoring

DTG was measured in monitoring wells MW-1s, MW-1m, MW-1d, MW-2d, and MW-3 through MW-5 on November 26, 2003 with an electronic water probe that can measure water levels to an accuracy of 0.01 foot. After measuring DTG, groundwater samples were collected for laboratory analysis using a low-flow purge method with dedicated polyethylene tubing and a peristaltic pump. As a quality control measure, a duplicate sample was collected from monitoring well MW-1s. The groundwater produced during purging was containerized in a 55-gallon drum for treatment at a later date. The groundwater samples were placed on ice and transported under chain-of-custody to North Creek Analytical of Seattle, Washington for analysis of VOCs using U.S. Environmental Protection Agency (EPA) Method 8260B.

Analytical laboratory reports and chain-of-custody documents are attached. A groundwater elevation contour map is presented as Figure 1, and a summary of groundwater monitoring and analytical data is included in Table 1. Please note that on Figure 1, static water elevation data collected from monitoring wells MW-1m and MW-1d were not used for determining groundwater flow direction, as screened intervals in the wells are below the current water table elevation.

COC found at Lakewood Towne Center site since site characterization began in the spring of 2000 include:

Abbreviated Notation	Chemical Name
PCE	tetrachloroethene or perchloroethene
TCE	trichloroethene
cis DCE	<i>cis</i> 1,2-dichloroethene
trans DCE	<i>trans</i> 1,2-dichloroethene
1,1 DCE	1,1-dichloroethene
1,1 DCA	1,1-dichloroethane
1,4 DCB	1,4-dichlorobenzene
VC	vinyl chloride
chloroform	chloroform

Compared to previous measurements collected in August 2003, groundwater elevations at the time of sampling were observed to have decreased by an average of 1.08 feet across the site. For this sampling event, groundwater appears to migrate to the west/northwest with an approximate hydraulic gradient of 0.002 foot per foot (ft/ft). This flow direction and the observed hydraulic gradient are consistent with those observed during previous sampling events.

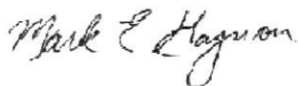
Groundwater Analytical Results

Analytical laboratory test results of the groundwater samples collected on November 26, 2003, indicated detectable concentrations of select VOC compounds in six monitoring wells listed here with their detected COC; MW-1s (TCE, cis DCE, and VC); MW-1m (PCE, TCE, and cis DCE); MW-1d (PCE); MW-3 (PCE and cis DCE), MW-4 (PCE, TCE, and cis DCE); and MW-5 (PCE). The reported concentration of TCE, cis DCE and VC in the sample from monitoring well MW-1s and PCE in MW-3 exceed the Model Toxics Control Act (MTCA) method B cleanup levels. (Compared to analytical data from the August 2003 sampling event, COC concentrations in site quarterly monitoring well MW-1s decreased with the exception of VC, quarterly monitoring wells MW-3 and MW-5 increased, and quarterly monitoring well MW-4 decreased.) Compared to analytical data from the November 2002 sampling event, COC concentrations in site annual monitoring wells MW-1m and MW-1d decreased. Reported concentrations for the upgradient monitoring well MW-2d were below laboratory method detection limits. The sample results are summarized in Table 1.

We appreciate the opportunity to be of continued service to Voss, Cook and Thel, LLP, and MBK Northwest, Inc. The next sampling event will include monitoring wells MW-1s, MW-3, MW-4 and MW-5 and is scheduled for February 2004. If you have any questions, please feel free to contact our office at your convenience.

Very truly yours,

BROWN AND CALDWELL



Mark E. Gagnon, L.H.G.
Project Manager



Dale A. Kerner, L.G.
Staff Scientist

MEG:DAK:kw
Attachments

cc/att: Ms. Dawn Baerlocher, MBK Northwest
Mr. Chuck Klein, Washington Department of Ecology
Mr. David Moore, MBK Northwest
Ms. Nancy Walker, Brown and Caldwell

Table 1. Summary of Groundwater Monitoring Data, Lakewood Towne Center, Lakewood, Washington

Well Identification (TOC elevation) ²	Date Sampled	µg/l ¹										DTW ¹⁰ (BTOC ft ¹¹)	WTE ¹² (ft)
		PCE ³	TCE ⁴	cis DCE ⁵	trans DCE ⁶	1,1-DCE ⁷	1,1-DCA ⁸	Vinyl chloride	1,4-DCB ⁹	Chloro- form			
MW-1s (93.33)	9/15/00	2.2	19	670	14	0.76	6.1	52	0.25	1.3	12.32	81.01	
	2/12/01	1.2	15	390	8.2	0.37	3.1	47	(0.20) ¹³	(0.20)	11.00	82.33	
	5/17/01	2.3	18	600	10	0.64	5.5	41	0.30	(0.20)	10.91	82.42	
	8/15/01	1.7	14	490	8.3	0.56	4.2	40	(0.20)	(0.20)	12.28	81.05	
	11/15/01	0.51	9.1	320	6.4	0.47	2.3	59	0.21	(0.20)	10.62	82.71	
	2/20/02	37	68	540	7.2	0.83	3.1	28	0.35	(0.20)	9.82	83.51	
	5/20/02	18	37	520	8.3	0.61	2.3	25	0.32	(0.20)	10.40	82.93	
	8/19/02	5.5	16	540	7.3	(2.0)	(2.0)	31	(2.0)	(2.0)	11.76	81.57	
	11/20/02	2.8	17	330	8.5	1.0	(0.20)	58	(0.20)	(0.20)	12.54	80.79	
	2/20/03	5.8	18	290	3.6	(2.0)	(2.0)	22	(2.0)	(2.0)	9.82 ¹⁴	83.51	
5/21/03	10	28	470	6.7	0.55	(0.20)	24	0.23	(0.20)	10.68 ¹⁴	82.65		
8/21/03	7.1	20	400	6.6	(2.0)	(2.0)	24	(2.0)	(2.0)	12.40 ¹⁴	80.93		
11/26/03	(5.0)	13.2	212	(5.0)	(5.0)	(5.0)	30.1	(5.0)	(5.0)	(5.0)	11.12	82.21	
MW-1m (93.39)	7/21/00	0.80	0.45	5.0	(0.20)	(0.20)	(0.20)	(0.20)	(0.20)	(0.20)	11.44	81.95	
	11/15/01	0.87	(0.20)	0.95	(0.20)	(0.20)	(0.20)	(0.20)	(0.20)	(0.20)	10.68	82.71	
	11/20/02	0.69	0.24	0.93	(0.20)	(0.20)	(0.20)	(0.20)	(0.20)	(0.20)	12.63	80.76	
	11/26/03	1.91	0.520	2.74	(0.20)	(0.20)	(0.20)	(0.20)	(0.20)	(0.20)	11.19	82.20	
MW-1d (93.56)	7/21/00	0.50	(0.20)	0.29	(0.20)	(0.20)	(0.20)	(0.20)	(0.20)	(0.20)	11.63	81.93	
	11/15/01	0.64	(0.20)	(0.20)	(0.20)	(0.20)	(0.20)	(0.20)	(0.20)	(0.20)	10.85	82.71	
	11/20/02	0.52	(0.20)	(0.20)	(0.20)	(0.20)	(0.20)	(0.20)	(0.20)	(0.20)	12.80	80.76	
11/26/03	0.70	(0.20)	(0.20)	(0.20)	(0.20)	(0.20)	(0.20)	(0.20)	(0.20)	11.39	82.17		
MW-2d (92.20)	7/21/00	0.73	(0.20)	(0.20)	(0.20)	(0.20)	(0.20)	(0.20)	(0.20)	(0.20)	10.64	81.56	
	11/16/01	1.2	(0.20)	(0.20)	(0.20)	(0.20)	(0.20)	(0.20)	(0.20)	(0.20)	9.22	82.98	
	11/21/02	1.2	(0.20)	(0.20)	(0.20)	(0.20)	(0.20)	(0.20)	(0.20)	(0.20)	11.26	80.94	
11/26/03	(0.20)	(0.20)	(0.20)	(0.20)	(0.20)	(0.20)	(0.20)	(0.20)	(0.20)	9.65	82.55		
MW-3 (97.06)	7/21/00	0.69	(0.20)	1.1	(0.20)	(0.20)	(0.20)	(0.20)	(0.20)	(0.20)	17.09	79.97	
	2/12/01	0.66	(0.20)	0.23	(0.20)	(0.20)	(0.20)	(0.20)	(0.20)	(0.20)	16.79	80.27	
	5/17/01	0.64	(0.20)	1.3	(0.20)	(0.20)	(0.20)	(0.20)	(0.20)	(0.20)	16.76	80.30	
	8/15/01	0.66	(0.20)	0.88	(0.20)	(0.20)	(0.20)	(0.20)	(0.20)	(0.20)	17.67	79.39	
11/15/01	0.57	(0.20)	0.73	(0.20)	(0.20)	(0.20)	(0.20)	(0.20)	(0.20)	16.39	80.67		

Table 1. Summary of Groundwater Monitoring Data, Lakewood Towne Center, Lakewood, Washington

Well Identification (TOC elevation) ²	Date Sampled	µg/l ¹										DTW ¹⁰ (BTOC ft ¹¹)	WTE ¹² (ft)			
		PCE ³	TCE ⁴	cis DCE ⁵	trans DCE ⁶	1,1-DCE ⁷	1,1-DCA ⁸	Vinyl chloride	1,4-DCB ⁹	Chloro- form						
MW-3 (97.06) (cont'd)	2/20/02	0.66	0.31	1.3	(0.20)	(0.20)	(0.20)	(0.20)	(0.20)	(0.20)	(0.20)	(0.20)	(0.20)	(0.20)	16.00	81.06
	5/20/02	0.52	(0.20)	0.93	(0.20)	(0.20)	(0.20)	(0.20)	(0.20)	(0.20)	(0.20)	(0.20)	(0.20)	(0.20)	16.38	80.68
	8/19/02	0.57	(0.20)	0.79	(0.20)	(0.20)	(0.20)	(0.20)	(0.20)	(0.20)	(0.20)	(0.20)	(0.20)	(0.20)	17.33	79.73
	11/20/02	0.57	(0.20)	0.84	(0.20)	(0.20)	(0.20)	(0.20)	(0.20)	(0.20)	(0.20)	(0.20)	(0.20)	0.37	17.91	79.15
	2/20/03	0.68	(0.20)	1.1	(0.20)	(0.20)	(0.20)	(0.20)	(0.20)	(0.20)	(0.20)	(0.20)	(0.20)	(0.20)	16.00 ¹⁴	81.06
	5/21/03	0.50	(0.20)	0.91	(0.20)	(0.20)	(0.20)	(0.20)	(0.20)	(0.20)	(0.20)	(0.20)	(0.20)	(0.20)	16.59 ¹⁴	80.47
	8/21/03	0.54	(0.20)	0.69	(0.20)	(0.20)	(0.20)	(0.20)	(0.20)	(0.20)	(0.20)	(0.20)	(0.20)	(0.20)	17.75 ¹⁴	79.31
	11/26/03	0.87	(0.20)	1.05	(0.20)	(0.20)	(0.20)	(0.20)	(0.20)	(0.20)	(0.20)	(0.20)	(0.20)	(0.20)	17.23	79.83
	9/15/00	1.6	4.9	120	2.8	(0.20)	1.0	(0.20)	(0.20)	(0.20)	(0.20)	(0.20)	(0.20)	(0.20)	13.92	80.90
	2/12/01	1.0	2.3	48	0.90	(0.20)	0.22	(0.20)	(0.20)	(0.20)	(0.20)	(0.20)	(0.20)	(0.20)	12.61	82.21
	5/17/01	1.0	3.4	100	1.6	(0.20)	1.0	(0.20)	(0.20)	(0.20)	(0.20)	(0.20)	(0.20)	(0.20)	12.50	82.32
8/15/01	0.97	2.9	70	1.1	(0.20)	0.68	(0.20)	(0.20)	(0.20)	(0.20)	(0.20)	(0.20)	(0.20)	13.86	80.96	
11/15/01	0.99	1.6	35	0.57	(0.20)	0.29	(0.20)	(0.20)	(0.20)	(0.20)	(0.20)	(0.20)	(0.20)	12.22	82.60	
2/20/02	9.8	18	110	1.3	(0.20)	0.71	(0.20)	(0.20)	(0.20)	(0.20)	(0.20)	(0.20)	(0.20)	11.46	83.36	
5/20/02	3.8	6.6	65	0.90	(0.20)	0.32	(0.20)	(0.20)	(0.20)	(0.20)	(0.20)	(0.20)	(0.20)	12.03	82.79	
8/19/02	2.4	4.2	77	1.7	(0.40)	(0.40)	(0.40)	(0.40)	(0.40)	(0.40)	(0.40)	(0.40)	(0.40)	13.35	81.47	
11/21/02	1.6	3.7	38	0.99	(0.20)	(0.20)	(0.20)	(0.20)	(0.20)	(0.20)	(0.20)	(0.20)	(0.20)	14.23	80.59	
2/20/03	1.5	3.1	36	0.48	(0.20)	(0.20)	(0.20)	(0.20)	(0.20)	(0.20)	(0.20)	(0.20)	(0.20)	11.46 ¹⁴	83.36	
5/21/03	2.4	4.7	65	0.97	(0.20)	(0.20)	(0.20)	(0.20)	(0.20)	(0.20)	(0.20)	(0.20)	(0.20)	12.29 ¹⁴	82.53	
8/21/03	1.8	3.8	54	0.78	(0.20)	(0.20)	(0.20)	(0.20)	(0.20)	(0.20)	(0.20)	(0.20)	(0.20)	13.95 ¹⁴	80.87	
11/26/03	1.73	2.0	24.8	(1.0)	(1.0)	(1.0)	(1.0)	(1.0)	(1.0)	(1.0)	(1.0)	(1.0)	(1.0)	12.72	82.10	
9/15/00	1.2	(0.20)	(0.20)	(0.20)	(0.20)	(0.20)	(0.20)	(0.20)	(0.20)	(0.20)	(0.20)	(0.20)	(0.20)	13.52	80.85	
2/12/01	0.70	(0.20)	(0.20)	(0.20)	(0.20)	(0.20)	(0.20)	(0.20)	(0.20)	(0.20)	(0.20)	(0.20)	(0.20)	12.24	82.13	
5/17/01	0.62	(0.20)	(0.20)	(0.20)	(0.20)	(0.20)	(0.20)	(0.20)	(0.20)	(0.20)	(0.20)	(0.20)	(0.20)	12.13	82.24	
8/15/01	0.88	(0.20)	(0.20)	(0.20)	(0.20)	(0.20)	(0.20)	(0.20)	(0.20)	(0.20)	(0.20)	(0.20)	(0.20)	13.43	80.94	
11/15/01	0.90	(0.20)	(0.20)	(0.20)	(0.20)	(0.20)	(0.20)	(0.20)	(0.20)	(0.20)	(0.20)	(0.20)	(0.20)	11.88	82.49	
2/20/02	0.44	(0.20)	(0.20)	(0.20)	(0.20)	(0.20)	(0.20)	(0.20)	(0.20)	(0.20)	(0.20)	(0.20)	(0.20)	11.10	83.27	
5/20/02	0.39	(0.20)	(0.20)	(0.20)	(0.20)	(0.20)	(0.20)	(0.20)	(0.20)	(0.20)	(0.20)	(0.20)	(0.20)	11.65	82.72	
8/19/02	0.71	(0.20)	(0.20)	(0.20)	(0.20)	(0.20)	(0.20)	(0.20)	(0.20)	(0.20)	(0.20)	(0.20)	(0.20)	12.98	81.39	
11/21/02	0.86	(0.20)	(0.20)	(0.20)	(0.20)	(0.20)	(0.20)	(0.20)	(0.20)	(0.20)	(0.20)	(0.20)	(0.20)	13.76	80.61	

Table 1. Summary of Groundwater Monitoring Data, Lakewood Towne Center, Lakewood, Washington

Well Identification (TOC elevation) ²	Date Sampled	µg/l ¹										DTW ¹⁰ (BTOC ft ¹¹)	WTE ¹² (ft)	
		PCE ³	TCE ⁴	cis DCE ⁵	trans DCE ⁶	1,1-DCE ⁷	1,1-DCA ⁸	Vinyl chloride	1,4-DCB ⁹	Chloro- form				
MW-5 (94.37) (cont'd)	2/20/03	0.62	(0.20)	(0.20)	(0.20)	(0.20)	(0.20)	(0.20)	(0.20)	(0.20)	(0.20)	(0.20)	11.10 ¹⁴	83.27
	5/21/03	0.52	(0.20)	(0.20)	(0.20)	(0.20)	(0.20)	(0.20)	(0.20)	(0.20)	(0.20)	(0.20)	11.93 ¹⁴	82.44
	8/21/03	0.89	(0.20)	(0.20)	(0.20)	(0.20)	(0.20)	(0.20)	(0.20)	(0.20)	(0.20)	(0.20)	13.61 ¹⁴	80.76
	11/26/03	0.94	(0.20)	(0.20)	(0.20)	(0.20)	(0.20)	(0.20)	(0.20)	(0.20)	(0.20)	(0.20)	12.34	82.03
MW-6	5/20/02	(0.20)	(0.20)	(0.20)	(0.20)	(0.20)	(0.20)	(0.20)	(0.20)	(0.20)	(0.20)	(0.20)	--	--
	8/19/02	(0.20)	(0.20)	(0.20)	(0.20)	(0.20)	(0.20)	(0.20)	(0.20)	(0.20)	(0.20)	(0.20)	--	--
	11/20/02	(0.20)	(0.20)	(0.20)	(0.20)	(0.20)	(0.20)	(0.20)	(0.20)	(0.20)	(0.20)	(0.20)	--	--
	2/20/03	(0.20)	(0.20)	(0.20)	(0.20)	(0.20)	(0.20)	(0.20)	(0.20)	(0.20)	(0.20)	(0.20)	--	--
	11/26/03	NS ¹⁷	NS	NS	NS	NS	NS	NS	NS	NS	NS	NS	--	--
Duplicate (MW-1s)	11/26/03	4.03	13.8	239	3.63	0.62	0.88	31.8	0.29	(0.20)	(0.20)	--	--	
<i>MTCA method A cleanup level</i> ¹⁵		5	5	na ¹⁸	na	Na	na	0.2	na	na	na			
<i>MTCA method B cleanup level</i> ¹⁶		0.858	3.98	80	160	0.0729	800	0.0292	1.82	7.17				

Values in **boldface** type indicate constituent detected above the established MTCA method A or method B groundwater cleanup level.

Shaded values represent results of the most recent sampling event.

¹ µg/l - micrograms per liter.

² Monitoring well location shown on Figure 1, top of casing elevation relative to local benchmark.

³ PCE - Perchloroethylene.

⁴ TCE - trichloroethene.

⁵ cis DCE - (cis) 1,2-dichloroethene.

⁶ trans DCE - (trans) 1,2-dichloroethene.

⁷ 1,1-DCE - 1,1-dichloroethene.

⁸ 1,1-DCA - 1,1-dichloroethane.

⁹ 1,4-DCB - 1,4-dichlorobenzene.

¹⁰ DTW - depth to water.

¹¹ BTOC - below top of casing in feet.

¹² WTE - water table elevation.

¹³ A (0.20) indicates the value reported was the laboratory Method Detection Limit. Concentrations, if present, below this were not quantifiable.

¹⁴ DTW data back calculated from Herrera WTE data in historic quarterly groundwater reports.

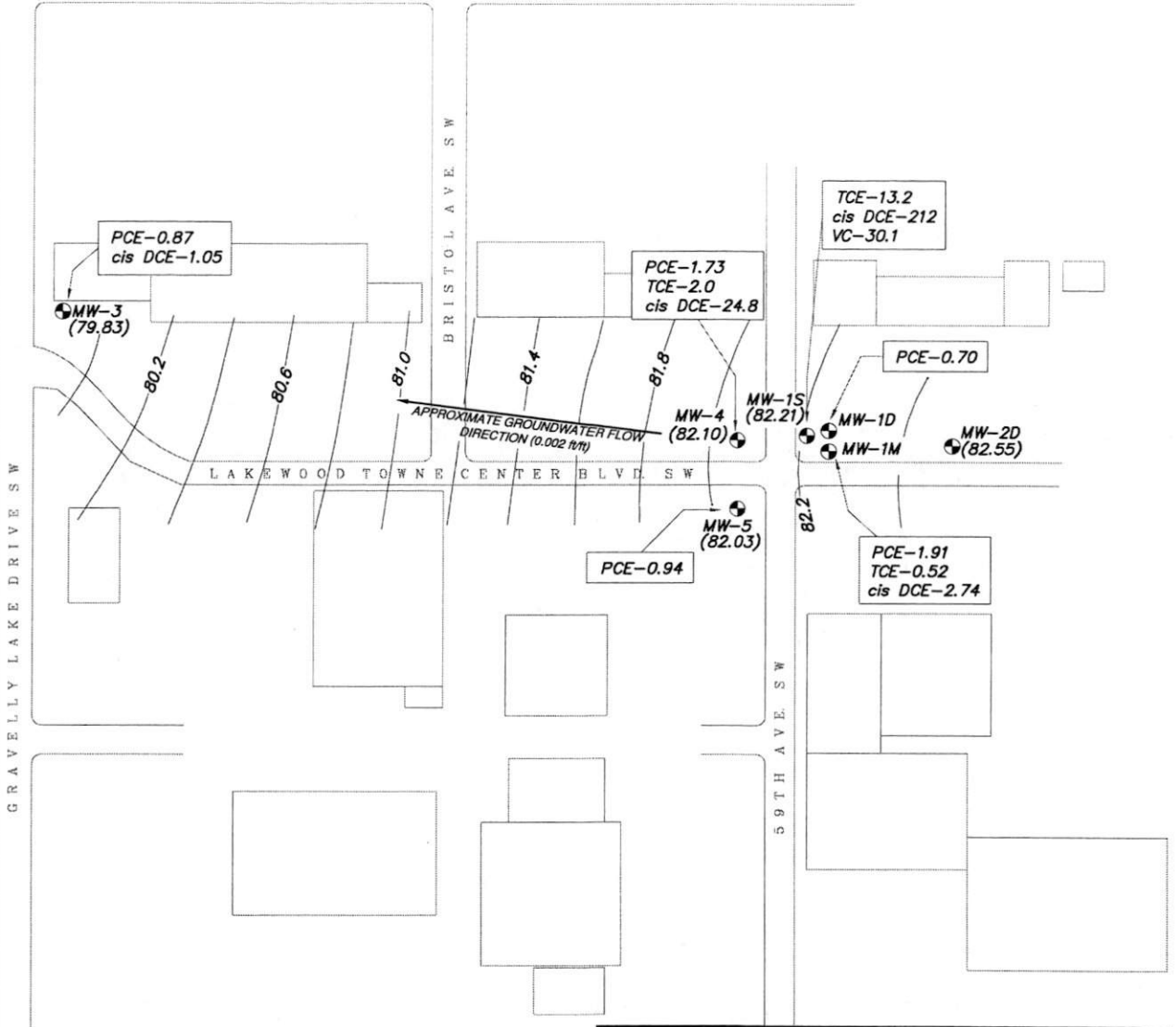
¹⁵ Model Toxics Control Act Cleanup Regulation (Ecology 2001a).

¹⁶ Cleanup Levels and Risk Calculations under the Model Toxics Control Act Cleanup Regulation (Ecology 2001b).

¹⁷ NS - not sampled.

¹⁸ na - Established groundwater cleanup level for this constituent is not available.

100TH ST. WEST



LEGEND	
	MONITORING WELL LOCATION
	GROUNDWATER ELEVATION CONTOUR
(87.02)	GROUNDWATER ELEVATION (11/26/03)
	DETECTABLE CONCENTRATIONS OF COC ONLY ARE INDICATED FOR EACH WELL SAMPLED
	PCE=Tetrachloroethene
	TCE=Trichloroethene
	cis DCE=cis 1,2 Dichloroethene
	VC=Vinyl chloride

MW-6

BROWN AND CALDWELL
Boise, Idaho

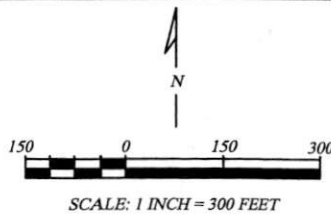


FIGURE 1
GROUNDWATER CONTOUR MAP
LAKEWOOD TOWNE CENTER
LAKEWOOD, WASHINGTON

MW-4

MW-1S

MW-1D

APPROXIMATE GW FLOW DIRECTION

MW-1M

L A K E W O O D T O W N E C E N T E R B L V D . S W

MW-5

5 9 T H A V E . S W

LEGEND



MONITORING WELL LOCATION



HRC INSTALLATION LOCATION

BROWN AND CALDWELL
Boise, Idaho



SCALE: 1 INCH = 50 FEET

FIGURE 2
HRC BOREHOLE LOCATIONS
LAKEWOOD TOWNE CENTER
LAKEWOOD, WASHINGTON

ATTACHMENT A
LABORATORY REPORTS



Seattle 11720 North Creek Pkwy N, Suite 400, Bothell, WA 98011-8244
425.420.9200 fax 425.420.9210
Spokane East 11115 Montgomery, Suite B, Spokane, WA 99206-4776
509.924.9200 fax 509.924.9290
Portland 9405 SW Nimbus Avenue, Beaverton, OR 97008-7132
503.906.9200 fax 503.906.9210
Bend 20332 Empire Avenue, Suite F-1, Bend, OR 97701-5711
541.383.9310 fax 541.382.7588
Anchorage 2000 W International Airport Road, Suite A-10, Anchorage, AK 99502-1119
907.563.9200 fax 907.563.9210

12 December 2003

Dale Kerner
Brown & Caldwell
380 E Park Center, Suite 240
Boise, ID/USA 83706
RE: Lakewood Towne Center

Enclosed are the results of analyses for samples received by the laboratory on 11/26/03 16:00. If you have any questions concerning this report, please feel free to contact me.

Sincerely,

Jeanne Garthwaite
Project Manager



Seattle 11720 North Creek Pkwy N, Suite 400, Bothell, WA 98011-8244
425.420.9200 fax 425.420.9210
Spokane East 11115 Montgomery, Suite B, Spokane, WA 99206-4776
509.924.9200 fax 509.924.9290
Portland 9405 SW Nimbus Avenue, Beaverton, OR 97008-7132
503.906.9200 fax 503.906.9210
Bend 20332 Empire Avenue, Suite F-1, Bend, OR 97701-5711
541.383.9310 fax 541.382.7588
Anchorage 2000 W International Airport Road, Suite A-10, Anchorage, AK 99502-1119
907.563.9200 fax 907.563.9210

Brown & Caldwell
380 E Park Center, Suite 240
Boise, ID/USA 83706

Project: Lakewood Towne Center
Project Number: 24716.002
Project Manager: Dale Kerner

Reported:
12/12/03 11:01

ANALYTICAL REPORT FOR SAMPLES

Sample ID	Laboratory ID	Matrix	Date Sampled	Date Received
MW-15 LTC	B3L0011-01	Water	11/26/03 10:10	11/26/03 16:00
MW-1M LTC	B3L0011-02	Water	11/26/03 11:00	11/26/03 16:00
MW-1d LTC	B3L0011-03	Water	11/26/03 12:10	11/26/03 16:00
MW-2d LTC	B3L0011-04	Water	11/26/03 14:30	11/26/03 16:00
MW-3 LTC	B3L0011-05	Water	11/26/03 13:00	11/26/03 16:00
MW-4 LTC	B3L0011-06	Water	11/26/03 12:20	11/26/03 16:00
MW-5 LTC	B3L0011-07	Water	11/26/03 12:30	11/26/03 16:00
DUPLICATE LTC	B3L0011-08	Water	11/26/03 10:15	11/26/03 16:00

North Creek Analytical - Bothell

The results in this report apply to the samples analyzed in accordance with the chain of custody document. This analytical report must be reproduced in its entirety.

Jeanne Garthwaite, Project Manager

North Creek Analytical, Inc.
Environmental Laboratory Network



Seattle 11720 North Creek Pkwy N, Suite 400, Bothell, WA 98011-8244
 425.420.9200 fax 425.420.9210
Spokane East 11115 Montgomery, Suite B, Spokane, WA 99206-4776
 509.924.9200 fax 509.924.9290
Portland 9405 SW Nimbus Avenue, Beaverton, OR 97008-7132
 503.906.9200 fax 503.906.9210
Bend 20332 Empire Avenue, Suite F-1, Bend, OR 97701-5711
 541.383.9310 fax 541.382.7588
Anchorage 2000 W International Airport Road, Suite A-10, Anchorage, AK 99502-1119
 907.563.9200 fax 907.563.9210

Brown & Caldwell
 380 E Park Center, Suite 240
 Boise, ID/USA 83706

Project: Lakewood Towne Center
 Project Number: 24716.002
 Project Manager: Dale Kerner

Reported:
 12/12/03 11:01

Volatile Organic Compounds by EPA Method 8260B
North Creek Analytical - Bothell

Analyte	Result	Reporting Limit	Units	Dilution	Batch	Prepared	Analyzed	Method	Notes
---------	--------	-----------------	-------	----------	-------	----------	----------	--------	-------

MW-15 LTC (B3L0011-01) Water Sampled: 11/26/03 10:10 Received: 11/26/03 16:00

Methyl tert-butyl ether	ND	10.0	ug/l	5	3L03044	12/02/03	12/02/03	EPA 8260B	
Bromochloromethane	ND	5.00	"	"	"	"	"	"	
Bromodichloromethane	ND	5.00	"	"	"	"	"	"	
Bromoform	ND	5.00	"	"	"	"	"	"	
Bromomethane	ND	10.0	"	"	"	"	"	"	
Carbon tetrachloride	ND	5.00	"	"	"	"	"	"	
Chlorobenzene	ND	5.00	"	"	"	"	"	"	
Chloroethane	ND	5.00	"	"	"	"	"	"	
Chloroform	ND	5.00	"	"	"	"	"	"	
Chloromethane	ND	25.0	"	"	"	"	"	"	
Dibromochloromethane	ND	5.00	"	"	"	"	"	"	
1,2-Dichlorobenzene	ND	5.00	"	"	"	"	"	"	
1,3-Dichlorobenzene	ND	5.00	"	"	"	"	"	"	
1,4-Dichlorobenzene	ND	5.00	"	"	"	"	"	"	
1,1-Dichloroethane	ND	5.00	"	"	"	"	"	"	
1,2-Dichloroethane	ND	5.00	"	"	"	"	"	"	
1,1-Dichloroethene	ND	5.00	"	"	"	"	"	"	
cis-1,2-Dichloroethene	212	5.00	"	"	"	"	"	"	
trans-1,2-Dichloroethene	ND	5.00	"	"	"	"	"	"	
1,2-Dichloropropane	ND	5.00	"	"	"	"	"	"	
cis-1,3-Dichloropropene	ND	5.00	"	"	"	"	"	"	
trans-1,3-Dichloropropene	ND	5.00	"	"	"	"	"	"	
Methylene chloride	ND	25.0	"	"	"	"	"	"	
1,1,2,2-Tetrachloroethane	ND	5.00	"	"	"	"	"	"	
Tetrachloroethene	ND	5.00	"	"	"	"	"	"	
1,1,1-Trichloroethane	ND	5.00	"	"	"	"	"	"	
1,1,2-Trichloroethane	ND	5.00	"	"	"	"	"	"	
Trichloroethene	13.2	5.00	"	"	"	"	"	"	
Trichlorofluoromethane	ND	5.00	"	"	"	"	"	"	
Vinyl chloride	30.1	5.00	"	"	"	"	"	"	
Surrogate: 1,2-DCA-d4	91.5 %	70-130			"	"	"	"	
Surrogate: Toluene-d8	97.5 %	70-130			"	"	"	"	
Surrogate: 4-BFB	106 %	70-130			"	"	"	"	

North Creek Analytical - Bothell

The results in this report apply to the samples analyzed in accordance with the chain of custody document. This analytical report must be reproduced in its entirety.

Jeanne Garthwaite

Jeanne Garthwaite, Project Manager

North Creek Analytical, Inc.
 Environmental Laboratory Network

Page 2 of 13



Seattle 11720 North Creek Pkwy N, Suite 400, Bothell, WA 98011-8244
 425.420.9200 fax 425.420.9210
Spokane East 11115 Montgomery, Suite B, Spokane, WA 99206-4776
 509.924.9200 fax 509.924.9290
Portland 9405 SW Nimbus Avenue, Beaverton, OR 97008-7132
 503.906.9200 fax 503.906.9210
Bend 20332 Empire Avenue, Suite F-1, Bend, OR 97701-5711
 541.383.9310 fax 541.382.7588
Anchorage 2000 W International Airport Road, Suite A-10, Anchorage, AK 99502-1119
 907.563.9200 fax 907.563.9210

Brown & Caldwell
 380 E Park Center, Suite 240
 Boise, ID/USA 83706

Project: Lakewood Towne Center
 Project Number: 24716.002
 Project Manager: Dale Kerner

Reported:
 12/12/03 11:01

Volatile Organic Compounds by EPA Method 8260B
North Creek Analytical - Bothell

Analyte	Result	Reporting Limit	Units	Dilution	Batch	Prepared	Analyzed	Method	Notes
---------	--------	-----------------	-------	----------	-------	----------	----------	--------	-------

MW-1M LTC (B3L0011-02) Water **Sampled: 11/26/03 11:00** **Received: 11/26/03 16:00**

1,1,1-Trichloroethane	ND	0.200	ug/l	1	3L03026	12/02/03	12/02/03	EPA 8260B	
1,1,2,2-Tetrachloroethane	ND	0.500	"	"	"	"	"	"	
1,1,2-Trichloroethane	ND	0.200	"	"	"	"	"	"	
1,1-Dichloroethane	ND	0.200	"	"	"	"	"	"	
1,1-Dichloroethene	ND	0.200	"	"	"	"	"	"	
Bromochloromethane	ND	0.200	"	"	"	"	"	"	
1,2-Dichlorobenzene	ND	0.200	"	"	"	"	"	"	
1,2-Dichloroethane	ND	0.200	"	"	"	"	"	"	
1,2-Dichloropropane	ND	0.200	"	"	"	"	"	"	
1,3-Dichlorobenzene	ND	0.200	"	"	"	"	"	"	
1,4-Dichlorobenzene	ND	0.200	"	"	"	"	"	"	
Bromodichloromethane	ND	0.200	"	"	"	"	"	"	
Bromoform	ND	0.200	"	"	"	"	"	"	
Bromomethane	ND	2.00	"	"	"	"	"	"	
Carbon tetrachloride	ND	0.200	"	"	"	"	"	"	
Chlorobenzene	ND	0.200	"	"	"	"	"	"	
Chloroethane	ND	1.00	"	"	"	"	"	"	
Chloroform	ND	0.200	"	"	"	"	"	"	
Chloromethane	ND	1.00	"	"	"	"	"	"	
cis-1,2-Dichloroethene	2.74	0.200	"	"	"	"	"	"	
cis-1,3-Dichloropropene	ND	0.200	"	"	"	"	"	"	
Dibromochloromethane	ND	0.200	"	"	"	"	"	"	
Methylene chloride	ND	5.00	"	"	"	"	"	"	
Tetrachloroethene	1.91	0.200	"	"	"	"	"	"	
trans-1,2-Dichloroethene	ND	0.200	"	"	"	"	"	"	
trans-1,3-Dichloropropene	ND	0.200	"	"	"	"	"	"	
Trichloroethene	0.520	0.200	"	"	"	"	"	"	
Trichlorofluoromethane	ND	0.500	"	"	"	"	"	"	
Vinyl chloride	ND	0.200	"	"	"	"	"	"	
Surrogate: 1,2-DCA-d4	93.0 %	70-130			"	"	"	"	
Surrogate: Toluene-d8	103 %	70-130			"	"	"	"	
Surrogate: 4-BFB	98.2 %	70-130			"	"	"	"	

North Creek Analytical - Bothell

The results in this report apply to the samples analyzed in accordance with the chain of custody document. This analytical report must be reproduced in its entirety.

Jeanne Garthwaite

Jeanne Garthwaite, Project Manager

North Creek Analytical, Inc.
 Environmental Laboratory Network



Seattle 11720 North Creek Pkwy N, Suite 400, Bothell, WA 98011-8244
 425.420.9200 fax 425.420.9210
Spokane East 11115 Montgomery, Suite B, Spokane, WA 99206-4776
 509.924.9200 fax 509.924.9290
Portland 9405 SW Nimbus Avenue, Beaverton, OR 97008-7132
 503.906.9200 fax 503.906.9210
Bend 20332 Empire Avenue, Suite F-1, Bend, OR 97701-5711
 541.383.9310 fax 541.382.7588
Anchorage 2000 W International Airport Road, Suite A-10, Anchorage, AK 99502-1119
 907.563.9200 fax 907.563.9210

Brown & Caldwell
 380 E Park Center, Suite 240
 Boise, ID/USA 83706

Project: Lakewood Towne Center
 Project Number: 24716.002
 Project Manager: Dale Kerner

Reported:
 12/12/03 11:01

Volatile Organic Compounds by EPA Method 8260B
North Creek Analytical - Bothell

Analyte	Result	Reporting		Units	Dilution	Batch	Prepared	Analyzed	Method	Notes
		Limit								
MW-1d LTC (B3L0011-03) Water Sampled: 11/26/03 12:10 Received: 11/26/03 16:00										
1,1,1-Trichloroethane	ND	0.200		ug/l	1	3L03026	12/02/03	12/02/03	EPA 8260B	
1,1,2,2-Tetrachloroethane	ND	0.500		"	"	"	"	"	"	"
1,1,2-Trichloroethane	ND	0.200		"	"	"	"	"	"	"
1,1-Dichloroethane	ND	0.200		"	"	"	"	"	"	"
1,1-Dichloroethene	ND	0.200		"	"	"	"	"	"	"
Bromochloromethane	ND	0.200		"	"	"	"	"	"	"
1,2-Dichlorobenzene	ND	0.200		"	"	"	"	"	"	"
1,2-Dichloroethane	ND	0.200		"	"	"	"	"	"	"
1,2-Dichloropropane	ND	0.200		"	"	"	"	"	"	"
1,3-Dichlorobenzene	ND	0.200		"	"	"	"	"	"	"
1,4-Dichlorobenzene	ND	0.200		"	"	"	"	"	"	"
Bromodichloromethane	ND	0.200		"	"	"	"	"	"	"
Bromoform	ND	0.200		"	"	"	"	"	"	"
Bromomethane	ND	2.00		"	"	"	"	"	"	"
Carbon tetrachloride	ND	0.200		"	"	"	"	"	"	"
Chlorobenzene	ND	0.200		"	"	"	"	"	"	"
Chloroethane	ND	1.00		"	"	"	"	"	"	"
Chloroform	ND	0.200		"	"	"	"	"	"	"
Chloromethane	ND	1.00		"	"	"	"	"	"	"
cis-1,2-Dichloroethene	ND	0.200		"	"	"	"	"	"	"
cis-1,3-Dichloropropene	ND	0.200		"	"	"	"	"	"	"
Dibromochloromethane	ND	0.200		"	"	"	"	"	"	"
Methylene chloride	ND	5.00		"	"	"	"	"	"	"
Tetrachloroethene	0.700	0.200		"	"	"	"	"	"	"
trans-1,2-Dichloroethene	ND	0.200		"	"	"	"	"	"	"
trans-1,3-Dichloropropene	ND	0.200		"	"	"	"	"	"	"
Trichloroethene	ND	0.200		"	"	"	"	"	"	"
Trichlorofluoromethane	ND	0.500		"	"	"	"	"	"	"
Vinyl chloride	ND	0.200		"	"	"	"	"	"	"
Surrogate: 1,2-DCA-d4	97.8 %	70-130				"	"	"	"	"
Surrogate: Toluene-d8	101 %	70-130				"	"	"	"	"
Surrogate: 4-BFB	98.8 %	70-130				"	"	"	"	"

North Creek Analytical - Bothell

The results in this report apply to the samples analyzed in accordance with the chain of custody document. This analytical report must be reproduced in its entirety.

Jeanne Garthwaite, Project Manager

North Creek Analytical, Inc.
 Environmental Laboratory Network



Seattle 11720 North Creek Pkwy N, Suite 400, Bothell, WA 98011-8244
 425.420.9200 fax 425.420.9210
Spokane East 11115 Montgomery, Suite B, Spokane, WA 99206-4776
 509.924.9200 fax 509.924.9290
Portland 9405 SW Nimbus Avenue, Beaverton, OR 97008-7132
 503.906.9200 fax 503.906.9210
Bend 20332 Empire Avenue, Suite F-1, Bend, OR 97701-5711
 541.383.9310 fax 541.382.7588
Anchorage 2000 W International Airport Road, Suite A-10, Anchorage, AK 99502-1119
 907.563.9200 fax 907.563.9210

Brown & Caldwell
 380 E Park Center, Suite 240
 Boise, ID/USA 83706

Project: Lakewood Towne Center
 Project Number: 24716.002
 Project Manager: Dale Kerner

Reported:
 12/12/03 11:01

Volatile Organic Compounds by EPA Method 8260B
North Creek Analytical - Bothell

Analyte	Result	Reporting Limit	Units	Dilution	Batch	Prepared	Analyzed	Method	Notes
---------	--------	-----------------	-------	----------	-------	----------	----------	--------	-------

MW-2d LTC (B3L0011-04) Water Sampled: 11/26/03 14:30 Received: 11/26/03 16:00

1,1,1-Trichloroethane	ND	0.200	ug/l	1	3L03026	12/02/03	12/02/03	EPA 8260B	
1,1,2,2-Tetrachloroethane	ND	0.500	"	"	"	"	"	"	
1,1,2-Trichloroethane	ND	0.200	"	"	"	"	"	"	
1,1-Dichloroethane	ND	0.200	"	"	"	"	"	"	
1,1-Dichloroethene	ND	0.200	"	"	"	"	"	"	
Bromochloromethane	ND	0.200	"	"	"	"	"	"	
1,2-Dichlorobenzene	ND	0.200	"	"	"	"	"	"	
1,2-Dichloroethane	ND	0.200	"	"	"	"	"	"	
1,2-Dichloropropane	ND	0.200	"	"	"	"	"	"	
1,3-Dichlorobenzene	ND	0.200	"	"	"	"	"	"	
1,4-Dichlorobenzene	ND	0.200	"	"	"	"	"	"	
Bromodichloromethane	ND	0.200	"	"	"	"	"	"	
Bromoform	ND	0.200	"	"	"	"	"	"	
Bromomethane	ND	2.00	"	"	"	"	"	"	
Carbon tetrachloride	ND	0.200	"	"	"	"	"	"	
Chlorobenzene	ND	0.200	"	"	"	"	"	"	
Chloroethane	ND	1.00	"	"	"	"	"	"	
Chloroform	ND	0.200	"	"	"	"	"	"	
Chloromethane	ND	1.00	"	"	"	"	"	"	
cis-1,2-Dichloroethene	ND	0.200	"	"	"	"	"	"	
cis-1,3-Dichloropropene	ND	0.200	"	"	"	"	"	"	
Dibromochloromethane	ND	0.200	"	"	"	"	"	"	
Methylene chloride	ND	5.00	"	"	"	"	"	"	
Tetrachloroethene	ND	0.200	"	"	"	"	"	"	
trans-1,2-Dichloroethene	ND	0.200	"	"	"	"	"	"	
trans-1,3-Dichloropropene	ND	0.200	"	"	"	"	"	"	
Trichloroethene	ND	0.200	"	"	"	"	"	"	
Trichlorofluoromethane	ND	0.500	"	"	"	"	"	"	
Vinyl chloride	ND	0.200	"	"	"	"	"	"	
Surrogate: 1,2-DCA-d4	102 %	70-130			"	"	"	"	
Surrogate: Toluene-d8	98.5 %	70-130			"	"	"	"	
Surrogate: 4-BFB	100 %	70-130			"	"	"	"	

North Creek Analytical - Bothell

The results in this report apply to the samples analyzed in accordance with the chain of custody document. This analytical report must be reproduced in its entirety.

Jeanne Garthwaite

Jeanne Garthwaite, Project Manager

North Creek Analytical, Inc.
 Environmental Laboratory Network

Page 5 of 13



Seattle 11720 North Creek Pkwy N, Suite 400, Bothell, WA 98011-8244
 425.420.9200 fax 425.420.9210
Spokane East 11115 Montgomery, Suite B, Spokane, WA 99206-4776
 509.924.9200 fax 509.924.9290
Portland 9405 SW Nimbus Avenue, Beaverton, OR 97008-7132
 503.906.9200 fax 503.906.9210
Bend 20332 Empire Avenue, Suite F-1, Bend, OR 97701-5711
 541.383.9310 fax 541.382.7588
Anchorage 2000 W International Airport Road, Suite A-10, Anchorage, AK 99502-1119
 907.563.9200 fax 907.563.9210

Brown & Caldwell
 380 E Park Center, Suite 240
 Boise, ID/USA 83706

Project: Lakewood Towne Center
 Project Number: 24716.002
 Project Manager: Dale Kerner

Reported:
 12/12/03 11:01

Volatile Organic Compounds by EPA Method 8260B
North Creek Analytical - Bothell

Analyte	Result	Reporting Limit	Units	Dilution	Batch	Prepared	Analyzed	Method	Notes
MW-3 LTC (B3L0011-05) Water Sampled: 11/26/03 13:00 Received: 11/26/03 16:00									
1,1,1-Trichloroethane	ND	0.200	ug/l	1	3L03026	12/02/03	12/02/03	EPA 8260B	
1,1,2,2-Tetrachloroethane	ND	0.500	"	"	"	"	"	"	
1,1,2-Trichloroethane	ND	0.200	"	"	"	"	"	"	
1,1-Dichloroethane	ND	0.200	"	"	"	"	"	"	
1,1-Dichloroethene	ND	0.200	"	"	"	"	"	"	
Bromochloromethane	ND	0.200	"	"	"	"	"	"	
1,2-Dichlorobenzene	ND	0.200	"	"	"	"	"	"	
1,2-Dichloroethane	ND	0.200	"	"	"	"	"	"	
1,2-Dichloropropane	ND	0.200	"	"	"	"	"	"	
1,3-Dichlorobenzene	ND	0.200	"	"	"	"	"	"	
1,4-Dichlorobenzene	ND	0.200	"	"	"	"	"	"	
Bromodichloromethane	ND	0.200	"	"	"	"	"	"	
Bromoform	ND	0.200	"	"	"	"	"	"	
Bromomethane	ND	2.00	"	"	"	"	"	"	
Carbon tetrachloride	ND	0.200	"	"	"	"	"	"	
Chlorobenzene	ND	0.200	"	"	"	"	"	"	
Chloroethane	ND	1.00	"	"	"	"	"	"	
Chloroform	ND	0.200	"	"	"	"	"	"	
Chloromethane	ND	1.00	"	"	"	"	"	"	
cis-1,2-Dichloroethene	1.05	0.200	"	"	"	"	"	"	
cis-1,3-Dichloropropene	ND	0.200	"	"	"	"	"	"	
Dibromochloromethane	ND	0.200	"	"	"	"	"	"	
Methylene chloride	ND	5.00	"	"	"	"	"	"	
Tetrachloroethene	0.870	0.200	"	"	"	"	"	"	
trans-1,2-Dichloroethene	ND	0.200	"	"	"	"	"	"	
trans-1,3-Dichloropropene	ND	0.200	"	"	"	"	"	"	
Trichloroethene	ND	0.200	"	"	"	"	"	"	
Trichlorofluoromethane	ND	0.500	"	"	"	"	"	"	
Vinyl chloride	ND	0.200	"	"	"	"	"	"	
Surrogate: 1,2-DCA-d4	98.0 %	70-130			"	"	"	"	
Surrogate: Toluene-d8	100 %	70-130			"	"	"	"	
Surrogate: 4-BFB	100 %	70-130			"	"	"	"	

North Creek Analytical - Bothell

The results in this report apply to the samples analyzed in accordance with the chain of custody document. This analytical report must be reproduced in its entirety.

Jeanne Garthwaite, Project Manager

North Creek Analytical, Inc.
 Environmental Laboratory Network



Seattle 11720 North Creek Pkwy N, Suite 400, Bothell, WA 98011-8244
 425.420.9200 fax 425.420.9210
Spokane East 11115 Montgomery, Suite B, Spokane, WA 99206-4776
 509.924.9200 fax 509.924.9290
Portland 9405 SW Nimbus Avenue, Beaverton, OR 97008-7132
 503.906.9200 fax 503.906.9210
Bend 20332 Empire Avenue, Suite F-1, Bend, OR 97701-5711
 541.383.9310 fax 541.382.7588
Anchorage 2000 W International Airport Road, Suite A-10, Anchorage, AK 99502-1119
 907.563.9200 fax 907.563.9210

Brown & Caldwell
 380 E Park Center, Suite 240
 Boise, ID/USA 83706

Project: Lakewood Towne Center
 Project Number: 24716.002
 Project Manager: Dale Kerner

Reported:
 12/12/03 11:01

Volatile Organic Compounds by EPA Method 8260B
North Creek Analytical - Bothell

Analyte	Result	Reporting		Units	Dilution	Batch	Prepared	Analyzed	Method	Notes
		Limit								
MW-4 LTC (B3L0011-06) Water Sampled: 11/26/03 12:20 Received: 11/26/03 16:00										
Methyl tert-butyl ether	ND	2.00		ug/l	1	3L03044	12/02/03	12/02/03	EPA 8260B	
Bromochloromethane	ND	1.00		"	"	"	"	"	"	
Bromodichloromethane	ND	1.00		"	"	"	"	"	"	
Bromoform	ND	1.00		"	"	"	"	"	"	
Bromomethane	ND	2.00		"	"	"	"	"	"	
Carbon tetrachloride	ND	1.00		"	"	"	"	"	"	
Chlorobenzene	ND	1.00		"	"	"	"	"	"	
Chloroethane	ND	1.00		"	"	"	"	"	"	
Chloroform	ND	1.00		"	"	"	"	"	"	
Chloromethane	ND	5.00		"	"	"	"	"	"	
Dibromochloromethane	ND	1.00		"	"	"	"	"	"	
1,2-Dichlorobenzene	ND	1.00		"	"	"	"	"	"	
1,3-Dichlorobenzene	ND	1.00		"	"	"	"	"	"	
1,4-Dichlorobenzene	ND	1.00		"	"	"	"	"	"	
1,1-Dichloroethane	ND	1.00		"	"	"	"	"	"	
1,2-Dichloroethane	ND	1.00		"	"	"	"	"	"	
1,1-Dichloroethene	ND	1.00		"	"	"	"	"	"	
cis-1,2-Dichloroethene	24.8	1.00		"	"	"	"	"	"	
trans-1,2-Dichloroethene	ND	1.00		"	"	"	"	"	"	
1,2-Dichloropropane	ND	1.00		"	"	"	"	"	"	
cis-1,3-Dichloropropene	ND	1.00		"	"	"	"	"	"	
trans-1,3-Dichloropropene	ND	1.00		"	"	"	"	"	"	
Methylene chloride	ND	5.00		"	"	"	"	"	"	
1,1,2,2-Tetrachloroethane	ND	1.00		"	"	"	"	"	"	
Tetrachloroethene	1.73	1.00		"	"	"	"	"	"	
1,1,1-Trichloroethane	ND	1.00		"	"	"	"	"	"	
1,1,2-Trichloroethane	ND	1.00		"	"	"	"	"	"	
Trichloroethene	2.00	1.00		"	"	"	"	"	"	
Trichlorofluoromethane	ND	1.00		"	"	"	"	"	"	
Vinyl chloride	ND	1.00		"	"	"	"	"	"	
Surrogate: 1,2-DCA-d4	96.0 %	70-130				"	"	"	"	
Surrogate: Toluene-d8	98.0 %	70-130				"	"	"	"	
Surrogate: 4-BFB	100 %	70-130				"	"	"	"	

North Creek Analytical - Bothell

The results in this report apply to the samples analyzed in accordance with the chain of custody document. This analytical report must be reproduced in its entirety.

Jeanne Garthwaite, Project Manager

North Creek Analytical, Inc.
Environmental Laboratory Network



Seattle 11720 North Creek Pkwy N, Suite 400, Bothell, WA 98011-8244
 425.420.9200 fax 425.420.9210
Spokane East 11115 Montgomery, Suite B, Spokane, WA 99206-4776
 509.924.9200 fax 509.924.9290
Portland 9405 SW Nimbus Avenue, Beaverton, OR 97008-7132
 503.906.9200 fax 503.906.9210
Bend 20332 Empire Avenue, Suite F-1, Bend, OR 97701-5711
 541.383.9310 fax 541.382.7588
Anchorage 2000 W International Airport Road, Suite A-10, Anchorage, AK 99502-1119
 907.563.9200 fax 907.563.9210

Brown & Caldwell
 380 E Park Center, Suite 240
 Boise, ID/USA 83706

Project: Lakewood Towne Center
 Project Number: 24716.002
 Project Manager: Dale Kerner

Reported:
 12/12/03 11:01

Volatile Organic Compounds by EPA Method 8260B
North Creek Analytical - Bothell

Analyte	Result	Reporting Limit	Units	Dilution	Batch	Prepared	Analyzed	Method	Notes
---------	--------	-----------------	-------	----------	-------	----------	----------	--------	-------

MW-5 LTC (B3L0011-07) Water Sampled: 11/26/03 12:30 Received: 11/26/03 16:00

1,1,1-Trichloroethane	ND	0.200	ug/l	1	3L03026	12/02/03	12/02/03	EPA 8260B	
1,1,2,2-Tetrachloroethane	ND	0.500	"	"	"	"	"	"	
1,1,2-Trichloroethane	ND	0.200	"	"	"	"	"	"	
1,1-Dichloroethane	ND	0.200	"	"	"	"	"	"	
1,1-Dichloroethene	ND	0.200	"	"	"	"	"	"	
Bromochloromethane	ND	0.200	"	"	"	"	"	"	
1,2-Dichlorobenzene	ND	0.200	"	"	"	"	"	"	
1,2-Dichloroethane	ND	0.200	"	"	"	"	"	"	
1,2-Dichloropropane	ND	0.200	"	"	"	"	"	"	
1,3-Dichlorobenzene	ND	0.200	"	"	"	"	"	"	
1,4-Dichlorobenzene	ND	0.200	"	"	"	"	"	"	
Bromodichloromethane	ND	0.200	"	"	"	"	"	"	
Bromoform	ND	0.200	"	"	"	"	"	"	
Bromomethane	ND	2.00	"	"	"	"	"	"	
Carbon tetrachloride	ND	0.200	"	"	"	"	"	"	
Chlorobenzene	ND	0.200	"	"	"	"	"	"	
Chloroethane	ND	1.00	"	"	"	"	"	"	
Chloroform	ND	0.200	"	"	"	"	"	"	
Chloromethane	ND	1.00	"	"	"	"	"	"	
cis-1,2-Dichloroethene	ND	0.200	"	"	"	"	"	"	
cis-1,3-Dichloropropene	ND	0.200	"	"	"	"	"	"	
Dibromochloromethane	ND	0.200	"	"	"	"	"	"	
Methylene chloride	ND	5.00	"	"	"	"	"	"	
Tetrachloroethene	0.940	0.200	"	"	"	"	"	"	
trans-1,2-Dichloroethene	ND	0.200	"	"	"	"	"	"	
trans-1,3-Dichloropropene	ND	0.200	"	"	"	"	"	"	
Trichloroethene	ND	0.200	"	"	"	"	"	"	
Trichlorofluoromethane	ND	0.500	"	"	"	"	"	"	
Vinyl chloride	ND	0.200	"	"	"	"	"	"	
Surrogate: 1,2-DCA-d4	98.8 %	70-130			"	"	"	"	
Surrogate: Toluene-d8	102 %	70-130			"	"	"	"	
Surrogate: 4-BFB	97.2 %	70-130			"	"	"	"	

North Creek Analytical - Bothell

The results in this report apply to the samples analyzed in accordance with the chain of custody document. This analytical report must be reproduced in its entirety.

Jeanne Garthwaite

Jeanne Garthwaite, Project Manager

North Creek Analytical, Inc.
 Environmental Laboratory Network



Seattle 11720 North Creek Pkwy N, Suite 400, Bothell, WA 98011-8244
 425.420.9200 fax 425.420.9210
Spokane East 11115 Montgomery, Suite B, Spokane, WA 99206-4776
 509.924.9200 fax 509.924.9290
Portland 9405 SW Nimbus Avenue, Beaverton, OR 97008-7132
 503.906.9200 fax 503.906.9210
Bend 20332 Empire Avenue, Suite F-1, Bend, OR 97701-5711
 541.383.9310 fax 541.382.7588
Anchorage 2000 W International Airport Road, Suite A-10, Anchorage, AK 99502-1119
 907.563.9200 fax 907.563.9210

Brown & Caldwell
 380 E Park Center, Suite 240
 Boise, ID/USA 83706

Project: Lakewood Towne Center
 Project Number: 24716.002
 Project Manager: Dale Kerner

Reported:
 12/12/03 11:01

Volatile Organic Compounds by EPA Method 8260B
North Creek Analytical - Bothell

Analyte	Result	Reporting Limit	Units	Dilution	Batch	Prepared	Analyzed	Method	Notes
---------	--------	-----------------	-------	----------	-------	----------	----------	--------	-------

DUPLICATE LTC (B3L0011-08) Water **Sampled: 11/26/03 10:15** **Received: 11/26/03 16:00**

cis-1,2-Dichloroethene	239	5.00	ug/l	5	3L03044	12/02/03	12/02/03	EPA 8260B	
Trichloroethene	13.8	5.00	"	"	"	"	"	"	
Vinyl chloride	31.8	5.00	"	"	"	"	"	"	
<i>Surrogate: 1,2-DCA-d4</i>	<i>93.5 %</i>	<i>70-130</i>			"	"	"	"	
<i>Surrogate: Toluene-d8</i>	<i>102 %</i>	<i>70-130</i>			"	"	"	"	
<i>Surrogate: 4-BFB</i>	<i>106 %</i>	<i>70-130</i>			"	"	"	"	
1,1,1-Trichloroethane	ND	0.200	"	"	3L03026	12/02/03	12/02/03	"	
1,1,2,2-Tetrachloroethane	ND	0.500	"	"	"	"	"	"	
1,1,2-Trichloroethane	ND	0.200	"	"	"	"	"	"	
1,1-Dichloroethane	0.880	0.200	"	"	"	"	"	"	
1,1-Dichloroethene	0.620	0.200	"	"	"	"	"	"	
Bromochloromethane	ND	0.200	"	"	"	"	"	"	
1,2-Dichlorobenzene	ND	0.200	"	"	"	"	"	"	
1,2-Dichloroethane	ND	0.200	"	"	"	"	"	"	
1,2-Dichloropropane	ND	0.200	"	"	"	"	"	"	
1,3-Dichlorobenzene	ND	0.200	"	"	"	"	"	"	
1,4-Dichlorobenzene	0.290	0.200	"	"	"	"	"	"	
Bromodichloromethane	ND	0.200	"	"	"	"	"	"	
Bromoform	ND	0.200	"	"	"	"	"	"	
Bromomethane	ND	2.00	"	"	"	"	"	"	
Carbon tetrachloride	ND	0.200	"	"	"	"	"	"	
Chlorobenzene	ND	0.200	"	"	"	"	"	"	
Chloroethane	ND	1.00	"	"	"	"	"	"	
Chloroform	ND	0.200	"	"	"	"	"	"	
Chloromethane	ND	1.00	"	"	"	"	"	"	
cis-1,2-Dichloroethene	165	0.200	"	"	"	"	"	"	E
cis-1,3-Dichloropropene	ND	0.200	"	"	"	"	"	"	
Dibromochloromethane	ND	0.200	"	"	"	"	"	"	
Methylene chloride	ND	5.00	"	"	"	"	"	"	
Tetrachloroethene	4.03	0.200	"	"	"	"	"	"	
trans-1,2-Dichloroethene	3.63	0.200	"	"	"	"	"	"	
trans-1,3-Dichloropropene	ND	0.200	"	"	"	"	"	"	
Trichloroethene	15.8	0.200	"	"	"	"	"	"	E
Trichlorofluoromethane	ND	0.500	"	"	"	"	"	"	
Vinyl chloride	32.2	0.200	"	"	"	"	"	"	E
<i>Surrogate: 1,2-DCA-d4</i>	<i>98.8 %</i>	<i>70-130</i>			"	"	"	"	
<i>Surrogate: Toluene-d8</i>	<i>101 %</i>	<i>70-130</i>			"	"	"	"	
<i>Surrogate: 4-BFB</i>	<i>102 %</i>	<i>70-130</i>			"	"	"	"	

North Creek Analytical - Bothell

The results in this report apply to the samples analyzed in accordance with the chain of custody document. This analytical report must be reproduced in its entirety.

Jeanne Garthwaite

Jeanne Garthwaite, Project Manager

North Creek Analytical, Inc.
Environmental Laboratory Network

Page 9 of 13



Seattle 11720 North Creek Pkwy N, Suite 400, Bothell, WA 98011-8244
425.420.9200 fax 425.420.9210
Spokane East 11115 Montgomery, Suite B, Spokane, WA 99206-4776
509.924.9200 fax 509.924.9290
Portland 9405 SW Nimbus Avenue, Beaverton, OR 97008-7132
503.906.9200 fax 503.906.9210
Bend 20332 Empire Avenue, Suite F-1, Bend, OR 97701-5711
541.383.9310 fax 541.382.7588
Anchorage 2000 W International Airport Road, Suite A-10, Anchorage, AK 99502-1119
907.563.9200 fax 907.563.9210

Brown & Caldwell
380 E Park Center, Suite 240
Boise, ID/USA 83706

Project: Lakewood Towne Center
Project Number: 24716.002
Project Manager: Dale Kerner

Reported:
12/12/03 11:01

Volatile Organic Compounds by EPA Method 8260B - Quality Control
North Creek Analytical - Bothell

Analyte	Result	Reporting Limit	Units	Spike Level	Source Result	%REC	%REC Limits	RPD	RPD Limit	Notes
---------	--------	-----------------	-------	-------------	---------------	------	-------------	-----	-----------	-------

Batch 3L03026: Prepared 12/02/03 Using EPA 5030B

Blank (3L03026-BLK1)

1,1,1-Trichloroethane	ND	0.200	ug/l							
1,1,2,2-Tetrachloroethane	ND	0.500	"							
1,1,2-Trichloroethane	ND	0.200	"							
1,1-Dichloroethane	ND	0.200	"							
1,1-Dichloroethene	ND	0.200	"							
Bromochloromethane	ND	0.200	"							
1,2-Dichlorobenzene	ND	0.200	"							
1,2-Dichloroethane	ND	0.200	"							
1,2-Dichloropropane	ND	0.200	"							
1,3-Dichlorobenzene	ND	0.200	"							
1,4-Dichlorobenzene	ND	0.200	"							
Bromodichloromethane	ND	0.200	"							
Bromoform	ND	0.200	"							
Bromomethane	ND	2.00	"							
Carbon tetrachloride	ND	0.200	"							
Chlorobenzene	ND	0.200	"							
Chloroethane	ND	1.00	"							
Chloroform	ND	0.200	"							
Chloromethane	ND	1.00	"							
cis-1,2-Dichloroethene	ND	0.200	"							
cis-1,3-Dichloropropene	ND	0.200	"							
Dibromochloromethane	ND	0.200	"							
Methylene chloride	ND	5.00	"							
Tetrachloroethene	ND	0.200	"							
trans-1,2-Dichloroethene	ND	0.200	"							
trans-1,3-Dichloropropene	ND	0.200	"							
Trichloroethene	ND	0.200	"							
Trichlorofluoromethane	ND	0.500	"							
Vinyl chloride	ND	0.200	"							
Surrogate: 1,2-DCA-d4	3.92		"	4.00		98.0	70-130			
Surrogate: Toluene-d8	4.05		"	4.00		101	70-130			
Surrogate: 4-BFB	3.95		"	4.00		98.8	70-130			

North Creek Analytical - Bothell

The results in this report apply to the samples analyzed in accordance with the chain of custody document. This analytical report must be reproduced in its entirety.

Jeanne Garthwaite, Project Manager



Seattle 11720 North Creek Pkwy N, Suite 400, Bothell, WA 98011-8244
 425.420.9200 fax 425.420.9210
Spokane East 11115 Montgomery, Suite B, Spokane, WA 99206-4776
 509.924.9200 fax 509.924.9290
Portland 9405 SW Nimbus Avenue, Beaverton, OR 97008-7132
 503.906.9200 fax 503.906.9210
Bend 20332 Empire Avenue, Suite F-1, Bend, OR 97701-5711
 541.383.9310 fax 541.382.7588
Anchorage 2000 W International Airport Road, Suite A-10, Anchorage, AK 99502-1119
 907.563.9200 fax 907.563.9210

Brown & Caldwell 380 E Park Center, Suite 240 Boise, ID/USA 83706	Project: Lakewood Towne Center Project Number: 24716.002 Project Manager: Dale Kerner	Reported: 12/12/03 11:01
---	---	-----------------------------

Volatile Organic Compounds by EPA Method 8260B - Quality Control
North Creek Analytical - Bothell

Analyte	Result	Reporting Limit	Units	Spike Level	Source Result	%REC	%REC Limits	RPD	RPD Limit	Notes
---------	--------	-----------------	-------	-------------	---------------	------	-------------	-----	-----------	-------

Batch 3L03026: Prepared 12/02/03 Using EPA 5030B

LCS (3L03026-BS1)

1,1-Dichloroethene	2.19	0.200	ug/l	2.00		110	80-120			
Chlorobenzene	2.14	0.200	"	2.00		107	80-120			
Trichloroethene	2.12	0.200	"	2.00		106	70-130			
Surrogate: 1,2-DCA-d4	3.64		"	4.00		91.0	70-130			
Surrogate: Toluene-d8	4.09		"	4.00		102	70-130			
Surrogate: 4-BFB	4.01		"	4.00		100	70-130			

LCS Dup (3L03026-BSD1)

1,1-Dichloroethene	2.10	0.200	ug/l	2.00		105	80-120	4.20	30	
Chlorobenzene	2.13	0.200	"	2.00		106	80-120	0.468	20	
Trichloroethene	2.19	0.200	"	2.00		110	70-130	3.25	20	
Surrogate: 1,2-DCA-d4	3.82		"	4.00		95.5	70-130			
Surrogate: Toluene-d8	3.98		"	4.00		99.5	70-130			
Surrogate: 4-BFB	4.04		"	4.00		101	70-130			

Batch 3L03044: Prepared 12/02/03 Using EPA 5030B

Blank (3L03044-BLK1)

Methyl tert-butyl ether	ND	2.00	ug/l							
Bromochloromethane	ND	1.00	"							
Bromodichloromethane	ND	1.00	"							
Bromoform	ND	1.00	"							
Bromomethane	ND	2.00	"							
Carbon tetrachloride	ND	1.00	"							
Chlorobenzene	ND	1.00	"							
Chloroethane	ND	1.00	"							
Chloroform	ND	1.00	"							
Chloromethane	ND	5.00	"							
Dibromochloromethane	ND	1.00	"							
1,2-Dichlorobenzene	ND	1.00	"							
1,3-Dichlorobenzene	ND	1.00	"							
1,4-Dichlorobenzene	ND	1.00	"							
1,1-Dichloroethane	ND	1.00	"							
1,2-Dichloroethane	ND	1.00	"							
1,1-Dichloroethene	ND	1.00	"							
cis-1,2-Dichloroethene	ND	1.00	"							

North Creek Analytical - Bothell

The results in this report apply to the samples analyzed in accordance with the chain of custody document. This analytical report must be reproduced in its entirety.

Jeanne Garthwaite

Jeanne Garthwaite, Project Manager



Seattle 11720 North Creek Pkwy N, Suite 400, Bothell, WA 98011-8244
 425.420.9200 fax 425.420.9210
Spokane East 11115 Montgomery, Suite B, Spokane, WA 99206-4776
 509.924.9200 fax 509.924.9290
Portland 9405 SW Nimbus Avenue, Beaverton, OR 97008-7132
 503.906.9200 fax 503.906.9210
Bend 20332 Empire Avenue, Suite F-1, Bend, OR 97701-5711
 541.383.9310 fax 541.382.7588
Anchorage 2000 W International Airport Road, Suite A-10, Anchorage, AK 99502-1119
 907.563.9200 fax 907.563.9210

Brown & Caldwell
 380 E Park Center, Suite 240
 Boise, ID/USA 83706

Project: Lakewood Towne Center
 Project Number: 24716.002
 Project Manager: Dale Kerner

Reported:
 12/12/03 11:01

Volatile Organic Compounds by EPA Method 8260B - Quality Control
North Creek Analytical - Bothell

Analyte	Result	Reporting Limit	Units	Spike Level	Source Result	%REC	%REC Limits	RPD	RPD Limit	Notes
---------	--------	-----------------	-------	-------------	---------------	------	-------------	-----	-----------	-------

Batch 3L03044: Prepared 12/02/03 Using EPA 5030B

Blank (3L03044-BLK1)

trans-1,2-Dichloroethene	ND	1.00	ug/l							
1,2-Dichloropropane	ND	1.00	"							
cis-1,3-Dichloropropene	ND	1.00	"							
trans-1,3-Dichloropropene	ND	1.00	"							
Methylene chloride	ND	5.00	"							
1,1,2,2-Tetrachloroethane	ND	1.00	"							
Tetrachloroethene	ND	1.00	"							
1,1,1-Trichloroethane	ND	1.00	"							
1,1,2-Trichloroethane	ND	1.00	"							
Trichloroethene	ND	1.00	"							
Trichlorofluoromethane	ND	1.00	"							
Vinyl chloride	ND	1.00	"							
<i>Surrogate: 1,2-DCA-d4</i>	19.5		"	20.0		97.5	70-130			
<i>Surrogate: Toluene-d8</i>	19.9		"	20.0		99.5	70-130			
<i>Surrogate: 4-BFB</i>	19.3		"	20.0		96.5	70-130			

LCS (3L03044-BS1)

Methyl tert-butyl ether	9.20	2.00	ug/l	10.0		92.0	70-130			
Chlorobenzene	8.99	1.00	"	10.0		89.9	77-120			
1,1-Dichloroethene	9.14	1.00	"	10.0		91.4	80-120			
Trichloroethene	8.78	1.00	"	10.0		87.8	80-120			
<i>Surrogate: 1,2-DCA-d4</i>	19.0		"	20.0		95.0	70-130			
<i>Surrogate: Toluene-d8</i>	20.4		"	20.0		102	70-130			
<i>Surrogate: 4-BFB</i>	20.0		"	20.0		100	70-130			

LCS Dup (3L03044-BSD1)

Methyl tert-butyl ether	9.61	2.00	ug/l	10.0		96.1	70-130	4.36	20	
Chlorobenzene	9.55	1.00	"	10.0		95.5	77-120	6.04	20	
1,1-Dichloroethene	10.0	1.00	"	10.0		100	80-120	8.99	20	
Trichloroethene	9.42	1.00	"	10.0		94.2	80-120	7.03	20	
<i>Surrogate: 1,2-DCA-d4</i>	19.2		"	20.0		96.0	70-130			
<i>Surrogate: Toluene-d8</i>	20.5		"	20.0		102	70-130			
<i>Surrogate: 4-BFB</i>	19.5		"	20.0		97.5	70-130			

North Creek Analytical - Bothell

The results in this report apply to the samples analyzed in accordance with the chain of custody document. This analytical report must be reproduced in its entirety.

Jeanne Garthwaite

Jeanne Garthwaite, Project Manager



Seattle 11720 North Creek Pkwy N, Suite 400, Bothell, WA 98011-8244
 425.420.9200 fax 425.420.9210
Spokane East 11115 Montgomery, Suite B, Spokane, WA 99206-4776
 509.924.9200 fax 509.924.9290
Portland 9405 SW Nimbus Avenue, Beaverton, OR 97008-7132
 503.906.9200 fax 503.906.9210
Bend 20332 Empire Avenue, Suite F-1, Bend, OR 97701-5711
 541.383.9310 fax 541.382.7588
Anchorage 2000 W International Airport Road, Suite A-10, Anchorage, AK 99502-1119
 907.563.9200 fax 907.563.9210

Brown & Caldwell
 380 E Park Center, Suite 240
 Boise, ID/USA 83706

Project: Lakewood Towne Center
 Project Number: 24716.002
 Project Manager: Dale Kerner

Reported:
 12/12/03 11:01

Notes and Definitions

- E Estimated value. The reported value exceeds the calibration range of the analysis.
- DET Analyte DETECTED
- ND Analyte NOT DETECTED at or above the reporting limit
- NR Not Reported
- dry Sample results reported on a dry weight basis
- RPD Relative Percent Difference

North Creek Analytical - Bothell

The results in this report apply to the samples analyzed in accordance with the chain of custody document. This analytical report must be reproduced in its entirety.

Jeanne Garthwaite, Project Manager



11720 North Creek Pkwy N Suite 400, Bothell, WA 98011-9508
 11115 E Montgomery Suite B, Spokane, WA 99206-4776
 9405 SW Nimbus Ave, Beaverton, OR 97008-7132
 20332 Empire Ave Suite F-1, Bend, OR 99701-5711
 3209 Denali St, Anchorage, AK 99503-4030

425-420-9200 FAX 420-9210
 509-924-9200 FAX 924-9290
 503-906-9200 FAX 906-9210
 541-383-9310 FAX 382-7588
 907-334-9200 FAX 334-9210

CHAIN OF CUSTODY REPORT

Work Order #: **B3L0011**

CLIENT:		INVOICE TO:		TURNAROUND REQUEST			
REPORT TO: DALE KERNER / ADA HAMILTON		P.O. NUMBER:		in Business Days *			
ADDRESS: BROWN AND CAIDWELL 701 PIKE ST, SUITE 1200, SEATTLE WA		PRESERVATIVE		Organic & Inorganic Analyses			
PHONE: 206 624 0100 FAX: 206 749 2200 98101		REQUESTED ANALYSES		Petroleum Hydrocarbon Analyses			
PROJECT NAME: LAKEWOOD TOWNE CENTER				STD. <input checked="" type="checkbox"/> 1 <input type="checkbox"/> 2 <input type="checkbox"/> 3 <input type="checkbox"/> 4 <input type="checkbox"/> 5 <input type="checkbox"/> 7 <input type="checkbox"/> <1			
PROJECT NUMBER: 24746.002				STD. <input type="checkbox"/> 5 <input type="checkbox"/> 4 <input type="checkbox"/> 3 <input type="checkbox"/> 2 <input type="checkbox"/> 1 <input type="checkbox"/> <1			
SAMPLED BY: ADA HAMILTON				OTHER Specify:			
CLIENT SAMPLE IDENTIFICATION	SAMPLING DATE/TIME			MATRIX (W, S, O)	# OF CONT.	LOCATION / COMMENTS	NCA WO ID
MW-15 1 LAKEWOOD TOWNE CENTER	10:10 11-26-03	X		W	3		
MW-1M 2 LAKEWOOD TOWNE CENTER	11:00 11-26-03	X		W	3		
MW-1d 3 LAKEWOOD TOWNE CENTER	12:10 11-26-03	X		W	3		
MW-2A 4 LAKEWOOD TOWNE CENTER	14:30 11-26-03	X		W	3		
MW-3 5 LAKEWOOD TOWNE CENTER	13:00 11-26-03	X		W	3		
MW-4 6 LAKEWOOD TOWNE CENTER	12:20 11-26-03	X		W	3		
MW-5 7 LAKEWOOD TOWNE CENTER	12:30 11-26-03	X		W	3		
DUPLICATE 8 LAKEWOOD TOWNE CENTER	10:15 11-26-03	X		W	3		
TB 9	11-26-03 12:00			W	1		
10							
RELEASED BY: <i>Ada Hamilton</i>		DATE: 11/26/03	TIME: 1600	RECEIVED BY: <i>A. No</i>		DATE: 11/26/03	TIME: 1600
PRINT NAME: ADA HAMILTON		FIRM: BROWN AND CAIDWELL		PRINT NAME: Scott Wagerman		FIRM: NCA	
RELEASED BY:		DATE:	TIME:	RECEIVED BY:		DATE:	TIME:
PRINT NAME:		FIRM:		PRINT NAME:		FIRM:	
ADDITIONAL REMARKS:		Revised Chain of Custody		TEMP:		PAGE	OF