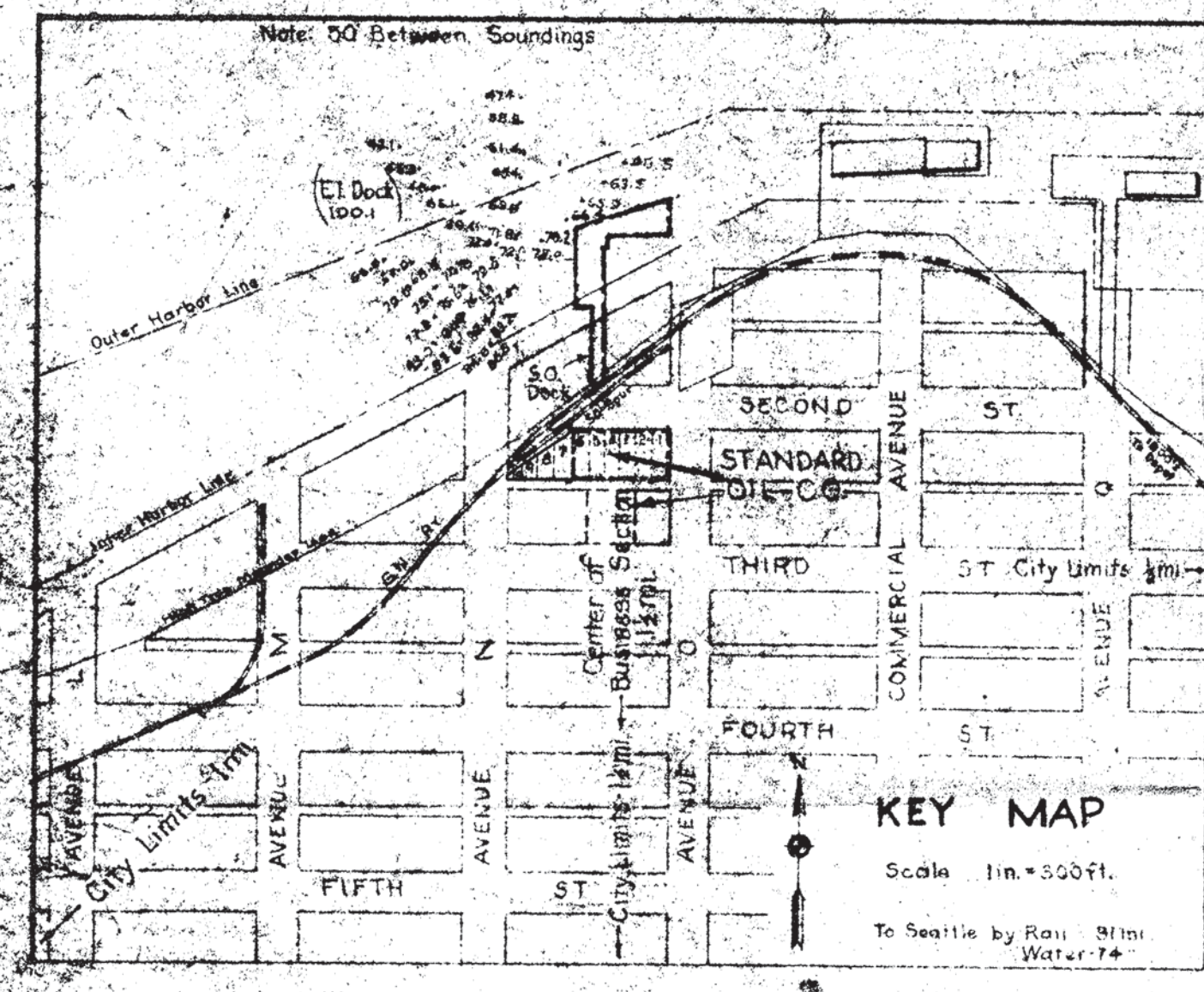


**APPENDIX A**  
**Standard Oil Bulk Fuel Terminal Layout**

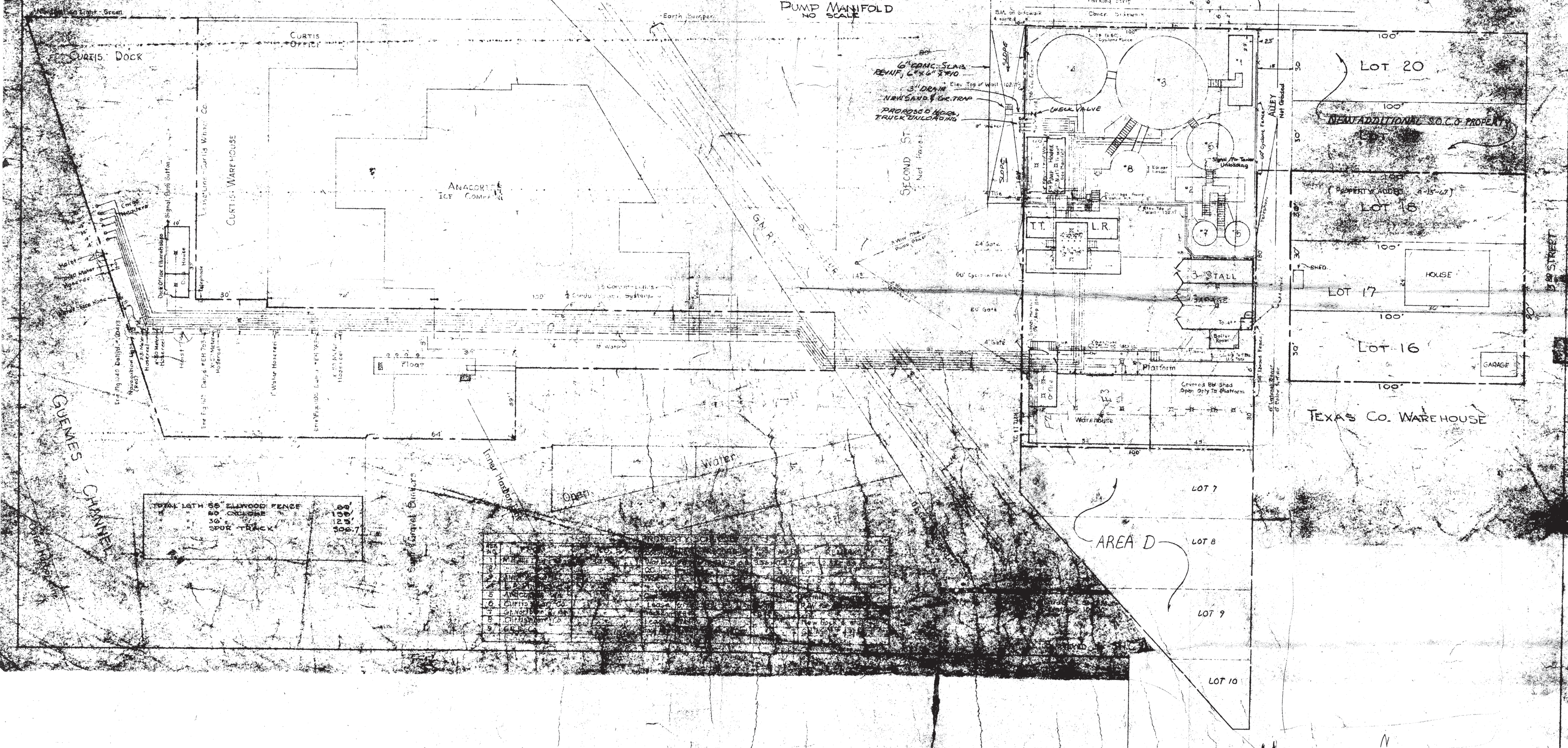
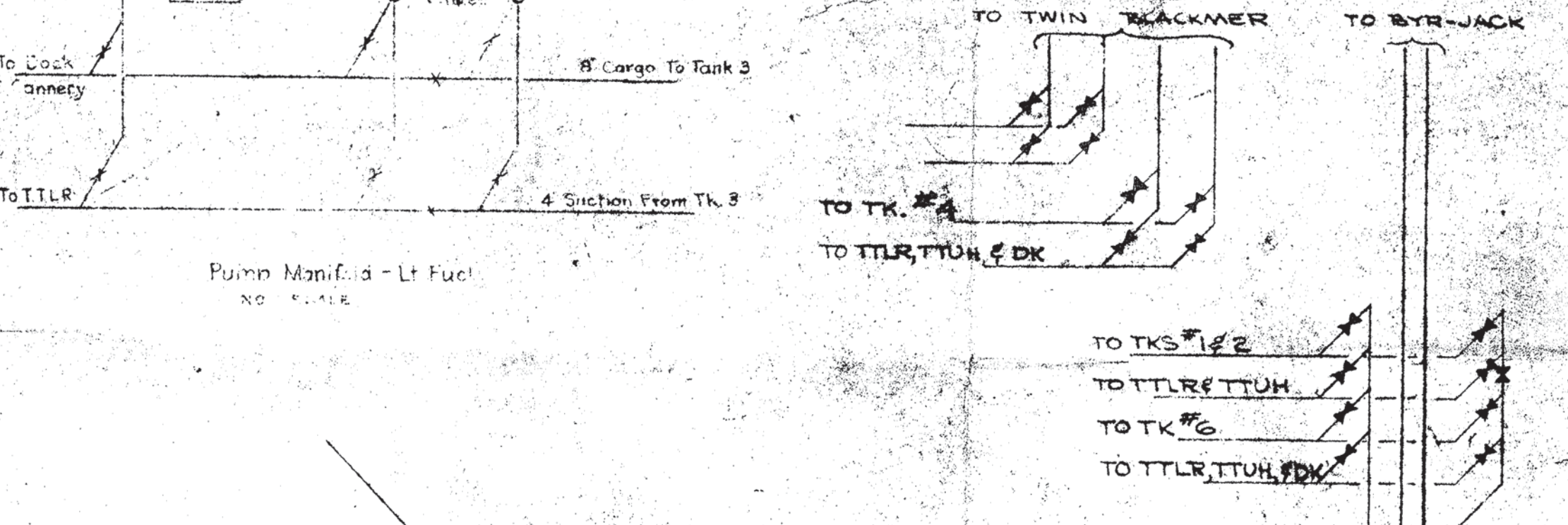
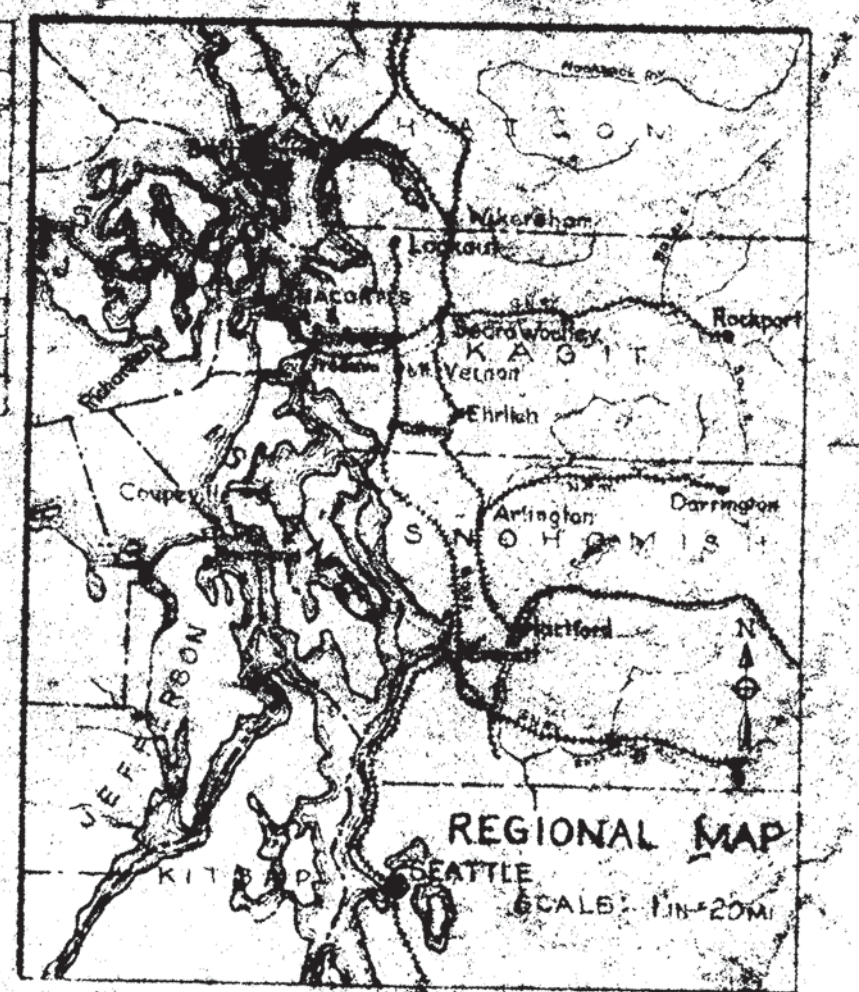




TANKAGE				
TANK No.	SIZE	BELL	Prod.	EL. BOT.
1	10' x 30'	463		106.27
2	10' x 30'	463		108.20
3	40' x 30'	6699		13.25
4	30' x 30'	4772		98.68
5	10' x 30'	463		100.53
6	20' x 24'	1334		99.25
7	10' x 30'	463		100.39
8	5' x 29'	1020		97.79

PUMPING EQUIPMENT							
PUMPS			POWER				
TYPE	MAKE	SIZE	SERIAL No.	PRODUCER	ENG. No.	DRIVE HP	SERIAL No.
Centrifugal	2	20"	20591		US	115	66350
Centrifugal	2	20"	79124		SE	Direct	3362272
Centrifugal	2	20"	0646544		SE	Direct	
RY	Moran	1	7517	Water	Cent	3	946465
Rot. Blower	1	12"	15287		Island	3	502284
			61236		AC	3	3002584
			81431				

METERS			
MAKE	SIZE	SERIAL No.	Prod.
Graber	3"	F-193	
	2"		
Flowmeter	X20	19034	
	X20	6611	
	X20	65100	
	X20	65100	
	X20	65100	
	X20	65100	
	X20	65100	
	X20	65100	



TOTAL LGTH 66' SLWOOD FENCE	138
80' CONCOURSE	138
30' SPUR TRACK	138
	406.7

NO.	DATE	DESCRIPTION
1	5-31-21	TRACED A.L.H.
2	5-31-21	CHECKED D.C.C.
3	5-31-21	APPROVED

REVISIONS	
NO.	NATURE
1	REVISED PER DROWN, R.C. 11/24/20
2	ADDED LOTS 16-20 REC 1/14/21
3	ADDED LOTS 16, 17, 18 G. 7/6/20
4	ADDED LOTS 7-10, 19, 20 TEL 8/31/20

STANDARD OIL CO. OF CALIF.  
 SAN FRANCISCO  
 ANACORTES, W.N.  
 GROUND PLAN  
 SCALE 1"=20' DATE 5-31-21  
 DRAWN A.L.H. TRACED A.L.H.  
 CHECKED D.C.C. APPROVED