

# Pope and Talbot Sawmill Inc (Port Gamble Site, Kitsap County WA) Facility Site ID # 93937775



## Draft Plans for An Interim Action are Available for Public Review and Comment

The Washington State Department of Ecology (Ecology) is inviting public comment on several documents. The following documents are related to the proposed Interim Action.

- Draft Interim Remedial Action Plan
- SEPA Determination of Non Significance

The interim cleanup action is being conducted by Ecology, the lead agency under a cooperative partnership with the Washington State Department of Natural Resources (DNR) and is in accord with the Washington State Sediments Management Standards (SMS) and the Model Toxics Control Act (MTCA).

An *Interim Remedial Action* is any remedial action that partially addresses the cleanup of a site. This plan for an interim remedial action documents existing conditions at the site and describes type of cleanup.

The *Determination of Non Significance* (DNS) is issued by the State Environmental Policy Act (SEPA) lead agency after they have determined that a proposal is unlikely to have a significant adverse environmental impact or that all adverse impacts can be "mitigated" to a non significant level.

## Site Background

The Port Gamble (formerly Pope and Talbot (P&T) Mill Facility) site is located in Port Gamble Bay on Hood Canal. The former mill facility consists of upland properties previously owned by P&T and adjacent DNR-managed aquatic land.

P&T conducted sawmill and related forest products manufacturing operations at the site from 1853 to 1995. P&T transferred ownership to Pope Resource Inc. in 1985. Portions of the site are currently leased to Caicos for log sorting and material handling. Environmental investigations that began in 1999 confirmed the presence of wood debris in nearshore sediments. These debris are harmful to the nearshore habitat and will require cleanup.

## Overview of Interim Action cleanup activities

The purpose of the interim cleanup is to remove the greatest remaining accumulations of wood debris from the marine environment and restore sediment-associated habitat functions within this portion of Port Gamble Bay. As part of the Interim Action 12,000 cubic yards (cy) of sediment containing wood debris, sand, and silt will be dredged from a 5.6 acre area. The dredged materials will be rinsed with freshwater MTCA requirements are met. Subsequent the cleanup, dredged materials will be used upland as topsoil on adjacent Pope Resources forest lands. Final cleanup actions to address

### November 2006

**Public comment period:  
November 6, to  
December 6, 2006**

To review documents:

**Port Gamble Historic Museum**  
32400 Rainier Avenue  
Port Gamble, WA 98364  
By appointment only  
(360) 297-8074 ext. 22;  
Monday- Friday 7:30 am – 4:00 pm

**WA Department of Ecology**  
Headquarters  
300 Desmond Drive  
Lacey, WA 98503-7600  
By appointment only: Contact  
Carol Dorn, [cesg461@ecv.wa.gov](mailto:cesg461@ecv.wa.gov)  
or (360) 407-7224

Send comments or questions to:

**Peter Adolphson, Site Manager**  
WA Department of Ecology  
Toxics Cleanup Program  
300 Desmond Drive  
Lacey, WA 98504-7600  
(360) 407-7236  
E-mail: [pado461@ecv.wa.gov](mailto:pado461@ecv.wa.gov)

**Sandra Caldwell**  
WA Department of Ecology  
Toxics Cleanup Program  
300 Desmond Drive  
Lacey, WA 98504-7600  
(360) 407-7236  
E-mail: [saca461@ecv.wa.gov](mailto:saca461@ecv.wa.gov)

Ecology web site:  
[http://www.ecv.wa.gov/programs/tcp/sites/pope/pope\\_hp.html](http://www.ecv.wa.gov/programs/tcp/sites/pope/pope_hp.html)

Publication Number 06-09-100

If you need this publication in an alternate format, please call the Toxic Cleanup Program at (360) 407-7170. Persons with hearing loss can call 711 for Washington Relay Service. Persons with a speech disability can call (877) 833-6341.

## Port Gamble Site, Kitsap County WA

remaining areas at the site will be developed following completion of the interim remedial action.

### Public comment on the Interim Action

Ecology is holding a public comment period for you to review the interim action plan and the DNS from November 6 through December 6, 2006. The documents are available on the Ecology webpage and the information repositories listed on the first page of this fact sheet.

### What happens next?

Once the public comment period ends, Ecology will review all comments that have been received and will make the appropriate changes.

Cleanup activities are due to begin mid December, 2006 and be completed by mid February 2007.

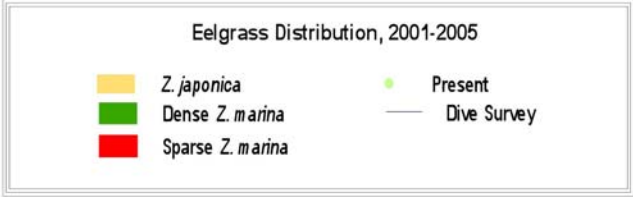
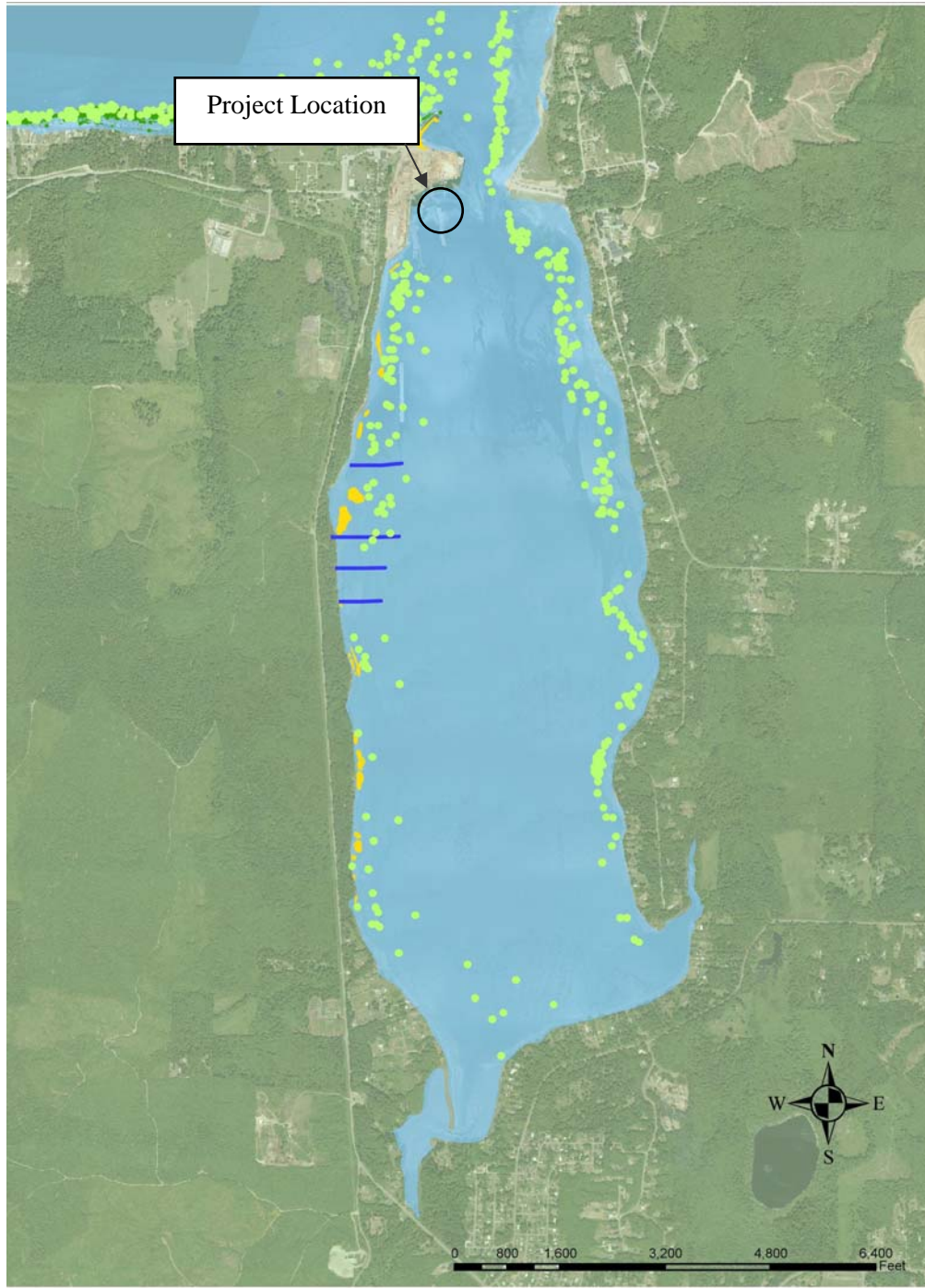
### Ecology wants your comments

Ecology encourages you to review and provide comments on the documents for this Interim Action cleanup and SEPA determination. Please send your comments by December 6, 2006, to Ecology's Site Manager, Peter Adolphson, at the address in the box on

the first page of this fact sheet. Comments may be sent by mail or e-mail and should include "Port Gamble Cleanup" in the subject line.

**For information about other Ecology public comment periods, meetings, hearings, workshops, and open houses, please visit Ecology's public events calendar at:**  
<http://apps.ecy.wa.gov/pubcalendar/calendar.asp>. **Read Frequently Asked Questions about Effective Public Commenting at this link to learn more about the public comment process.**

# Port Gamble Site, Kitsap County WA



**WESTON**  
SOLUTIONS

Map Datum: NAD 1983  
Map Coordinate System: Washington State Plane N FIPS 4601  
Map Projection: Lambert Conical  
Base Map Data: DIAS Imagery, DNR  
Attribute Data: WDFW, PNPT  
Created by: Ryan Ericson  
Date Created: October 2005



Department of Ecology  
Toxics Cleanup Program  
300 Desmond Drive  
Olympia, WA 98504-7600

---

**Pope and Talbot Sawmill Inc  
(Port Gamble Site, Kitsap County WA)**

*Ecology Seeks Public Comment  
on Interim Action Cleanup Plans*

Public Comment Period  
November 6 – December 6, 2006