



PETER BROWNING, DIRECTOR
HOWARD LEIBRAND, HEALTH OFFICER

700 SOUTH SECOND STREET #301, P.O. BOX 91071, MOUNT VERNON, WA 98273-1071, TEL (360) 336-9380

FAX (360) 336-9401

July 21, 2004

Gail Colburn
Department of Ecology
3190 160th Ave SE
Bellevue, WA 98008

Re: ERTS # 538940: I.I. of A Avenue Landfill

Dear Gail,

Enclosed is a copy of the initial sampling results report for the A Avenue Landfill in Anacortes Washington that you requested. After you have had a chance to review this, I want to discuss additional work at the site. As we discussed, I will be working with the City of Anacortes' consultant and Ecology's sediment specialists to develop a sediment sampling plan for the wetland area near the landfill.

I will call you in about a week.

Sincerely,

A handwritten signature in blue ink, appearing to read "Britt", is written over the word "Sincerely,".

Britt Pfaff-Dunton
Environmental Health Specialist

RECEIVED
JUL 22 2004
DEPT OF ECO

February 25, 2004
9156.000

Mr. Jeff Miller
City of Anacortes
P.O. Box 547
Anacortes, WA 98221-0547

Subject: "A" Avenue Landfill
Site Sampling Results
Anacortes, Washington

FEB 27 2004

RECEIVED

JUN 28 2004

SKAGIT COUNTY
HEALTH DEPT.

Dear Mr. Miller:

At the request of the City of Anacortes, Washington (the City), Geomatrix conducted surface water and soil sampling at the "A" Avenue Landfill site (the Site) situated in an area termed the Cranberry Lake Area, an area of wetlands, ponds, and hiking/biking trails that are part of the Anacortes Community Forest Lands. The Site is located about 700 feet west of the intersection at "A" Avenue and 37th Street in Anacortes, Washington. The purpose of the sampling was to evaluate soil and surface water conditions beneath and at the edges of the Site, respectively. This information is intended for use by the City of Anacortes and the Skagit County Health Department in an evaluation of closure options for the Site.

The work was performed in accordance with the Consultant Services Agreement between the City of Anacortes and Geomatrix dated May 28, 2003, and the Work Plan for Site Investigation, Geomatrix, November 2003. The Work Plan was approved by Britt Pfaff-Dunton of the Skagit County Health Department. Sampling was originally scheduled for spring 2003 but was delayed until December 2003 with approval from the Skagit County Health Department. The delay occurred because of a lack of surface water for sampling due to dry spring and summer conditions.

During the 1960s and early 1970s the City disposed of municipal solid waste at the Site. At that time the facility was operated as an open-burning dump. In approximately 1973, the City ceased using the facility for the disposal of municipal solid waste and the dump/landfill was closed. Closure operations consisted of regrading of waste materials and covering waste with a soil cover. This closure was typical for closing municipal dumps at the time and met regulatory requirements in place before 1985.

Since 1973, the City has used the facility for storage of public works materials and has continued to place additional soil cover materials on the waste. These cover materials have included street sweepings, vector materials, and sludge; and on the eastern side, broken asphalt, concrete and wood waste were also added. According to City staff, cover materials are expected to average five or six feet in thickness at the present time. The

closed landfill has a circular shape, extends approximately 25 to 30 feet above the surrounding grade, and covers six or seven acres.

The specific findings of the sampling study are presented below.

SOIL SAMPLING

Two Geomatrix hydrogeologists, Kathleen Goodman and Tasya Gray, visited the Site on December 18, 2003. They were met by Jeff Miller, City of Anacortes, and Britt Pfaff-Dunton, Skagit County Health Department. Geomatrix marked five locations to attempt soil sample collection by hand auger and marked each location with a surveying flag labeled with the assigned location identification. Mr. Miller and Ms. Pfaff-Dunton approved the locations and Ms. Gray began sample collection. Five soil samples were collected from five separate locations. The approximate locations of all soil samples are shown on Figure 1.

Soil samples were collected using a hand auger with a six-inch collection tray. The hand auger was advanced from 1 to 2.5 feet below ground surface (bgs), depending on the compaction of the soil, before collecting the sample at each location. Sample containers were filled directly from the hand auger in the field. The hand auger was decontaminated between sample locations using an Alconox wash followed by a distilled water rinse. Related field forms are included in Appendix A.

SURFACE WATER SAMPLING

Ms. Pfaff-Dunton identified two locations in the field from which to collect surface water samples that appeared to best represent the water seeping out from the landfill. Ms. Gray collected one sample from each location, on the northwest side and the northeast side of the Site. Both seeps are situated at the toe of the landfill embankment, just outside the boundaries of the refuse piles. The approximate locations of the seeps are shown on Figure 1.

Surface water samples were collected by submerging the sample containers in the ponded water. If a sample container contained preservative, an empty container was filled and the water was then immediately transferred to the preserved sample container. A Horiba U22 multi-parameter water quality meter was used to record readings for temperature, pH, specific conductance, dissolved oxygen, redox potential, and turbidity at each location. The water quality readings are summarized in Table 1 and the field forms are included in Appendix A.

ANALYTICAL RESULTS

The five soil samples (Figure 1) collected on December 18, 2003 were analyzed for the following chemical analyses:

- Total petroleum hydrocarbons (TPH) as diesel and oil by method NWTPH-Dx;
- Total metals (aluminum, antimony, arsenic, beryllium, cadmium, chromium, copper, mercury, nickel, selenium, silver, thallium, and zinc) by EPA 6000/7000 series methods; and
- Semivolatile organic compounds (SVOCs) by EPA method 8270C.

Table 2 lists the results of the soil analyses; the lab sheets are provided in Appendix B. Results were compared to the Model Toxics Control Act (MTCA, Ch. 173-340 WAC) Method A cleanup levels for unrestricted land use or Method B (direct contact) cleanup levels if Method A was not available for a compound. TPH as lube oil was found in concentrations over the MTCA Method A soil cleanup level at location S-2. All other TPH results were below MTCA cleanup levels. All metals and SVOCs results in soil samples were either not detected or below cleanup levels.

The two surface water samples collected on December 18, 2003 were analyzed for the following chemical analyses:

- Volatile organic compounds (VOCs) by EPA method 8260B;
- Total metals (aluminum, arsenic, beryllium, calcium, cadmium, chromium, copper, iron, mercury, magnesium, manganese, sodium, silver, nickel, antimony, selenium, thallium, and zinc) by EPA 6000/7000 series methods;
- Anions (chloride, nitrate, and sulfate) by EPA method 300.0; and
- Conventional chemistry parameters (alkalinity, ammonia, total dissolved solids, and total organic carbon).

Table 3 lists the results of the surface water analyses and the lab sheets are provided in Appendix B. One sample was collected from each seep, plus a field duplicate sample was collected for VOC analysis at one of the locations to assess precision. A trip blank sample was also submitted for VOC analysis with the samples. Results were compared to the Model Toxics Control Act (MTCA, Ch. 173-340 WAC) Method A cleanup levels for groundwater or Method B cleanup levels if Method A was not available for a compound. Results were also compared to the Ambient Water Quality Criteria (AWQC) for freshwater chronic conditions. All results were either not detected or below applicable cleanup levels.

LIMITATIONS

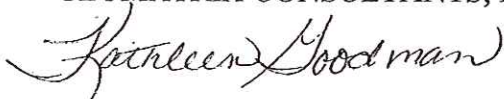
Geomatrix has performed services for this project in accordance with our Agreement with the City of Anacortes. No guarantees are either expressed or implied.

This sampling study did not include an evaluation of the presence of wetlands, geotechnical stability, asbestos, lead paint or radon.

Opinions and judgments expressed herein, which are based on our understanding and interpretations of current regulatory standards, should not be construed as legal opinions. This information was prepared for the exclusive use by the City of Anacortes; use of this information by organizations or individuals other than the City of Anacortes is at the risk of the third party. No third party shall have the right to rely on Geomatrix's opinions rendered in connection with the services or in this document without Geomatrix's written consent and the third party's agreement to be bound to the same conditions and limitations as the client.

We appreciate the opportunity to provide the City of Anacortes with our consulting services. Please call at (206) 342-1780 if you have any questions or require additional information.

Sincerely,
GEOMATRIX CONSULTANTS, INC.



Kathleen Goodman, L.G., L.Hg.
Principal Hydrogeologist

J:\9156.0\001\Anacortes Results Letter.doc

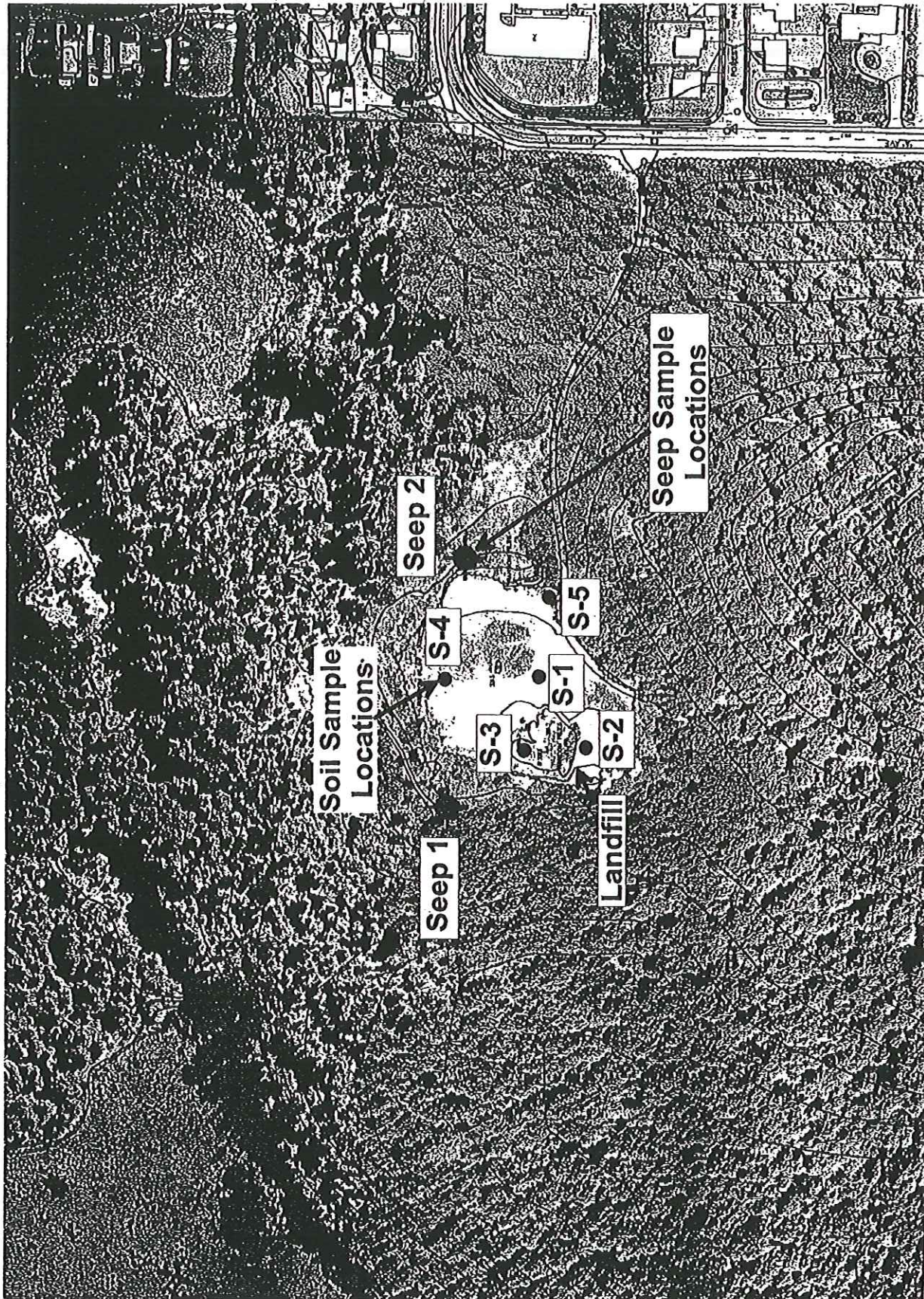
Attachments: Figure 1: Map of Sampling locations
 Table 1: Water Quality Results
 Table 2: Analytical Results – Soil Samples
 Table 3: Analytical Results – Surface Water Samples
 Appendix A: Field Forms
 Appendix B: Lab Sheets

The preceding report was prepared at the direction of a Licensed Geologist in the State of Washington. The Geologist's Seal is affixed below:



Kathleen Goodman

FIGURES



MAP OF SAMPLING LOCATIONS
 "A" Avenue Landfill Project
 Anacortes, Washington

Project No.
 009156.000

Figure
 1



TABLES

TABLE 1

WATER QUALITY RESULTS

"A" Avenue Landfill
Anacortes, Washington

| Parameter | Sample Location | |
|------------------------------|-----------------|--------|
| | Seep 1 | Seep 2 |
| Temperature (degrees C) | 8.50 | 8.19 |
| pH (standard units) | 9.15 | 7.93 |
| Specific Conductance (ms/cm) | 0.95 | 1.28 |
| Dissolved Oxygen (mg/L) | 6.81 | 11.37 |
| Redox Potential (mV) | -132 | -38 |
| Turbidity (NTU) | 166 | 45.9 |

Notes

1. Horiba U22 Multi-Parameter Water Quality Instrument used.

TABLE 2

ANALYTICAL RESULTS - SOIL SAMPLES

"A" Avenue Landfill
Anacortes, Washington

| Sample ID | S-1-121803 | S-2-121803 | S-3-121803 | S-4-121803 | S-5-121803 |
|-----------------------------|-------------------|-----------------|-------------------------|------------|------------|
| Analytes | | | | | |
| TPH ² (mg/kg) | | | | | |
| Diesel Range Hydrocarbons | 2000 | 22.3 | 437 | 116 | <200 |
| Lube Oil Range Hydrocarbons | 2000 | 80.7 | 2970⁵ | 504 | 898 |
| Metals (mg/kg) | | | | | |
| silver | 400 | <0.758 | <0.714 | <0.500 | <0.649 |
| aluminum | 32,600 | 11300 | 12300 | 13500 | 20400 |
| arsenic | 20 | 2.60 | 3.05 | 3.22 | 1.99 |
| beryllium | 160 | <0.758 | <0.714 | <0.500 | <0.500 |
| cadmium | 2 | <0.758 | <0.714 | <0.500 | <0.649 |
| chromium | 2000 (for Cr III) | 25.0 | 28.8 | 34.9 | 57.2 |
| copper | 2,960 | 21.9 | 27.1 | 28.9 | 31.2 |
| mercury | 2 | <0.100 | <0.100 | <0.100 | <0.100 |
| nickel | 1,600 | 36.1 | 39.1 | 50.7 | 76.7 |
| antimony | 32 | <2.27 | <2.14 | <1.50 | <1.50 |
| selenium | 400 | <0.758 | <0.714 | <0.500 | 0.532 |
| thallium | 5.6 | <0.758 | <0.714 | <0.500 | <0.649 |
| zinc | 24,000 | 50.5 | 73.7 | 68.2 | 41.4 |
| SVOCs ³ (mg/kg) | | | | | |
| all compounds | varies | ND ⁴ | ND | ND | ND |

Notes

1. MTCA Cleanup levels cited are from Method A Unrestricted Land Use, or Method B (direct contact) if A is not available. Aluminum level is 90% background for Puget Sound; no cleanup level is available for Al.
2. TPH = Total Petroleum Hydrocarbons analyzed by NWTPH-Dx.
3. SVOCs = Semi-volatile organic compounds analyzed by EPA Method 8270.
4. ND or "<" = analyte was not detected equal to or above the laboratory reporting limit.
5. Bolded concentrations indicate exceedance of cleanup level.

TABLE 3

ANALYTICAL RESULTS - SURFACE WATER SAMPLES

"A" Avenue Landfill
Anacortes, Washington

| Analytes | Regulatory Criteria Groundwater Method A or B, if no A | Regulatory Criteria AWQC for freshwater chronic | Secondary Max. Contaminant Levels | Range of leachate and domestic waste water ¹ | Sample ID | | |
|--------------------------------|--|---|---|--|-----------------|-----------------|---------------|
| | | | | | Seep-1-121803 | Seep-11-121803 | Seep-2-121803 |
| Metal (mg/l) | | | | | | | |
| silver | 0.08 | 0.00212 (for acute) | | | <0.00100 | -- ³ | <0.00100 |
| aluminum | not available | not available | 0.05 to 0.2 | | 1.85 | -- | <0.300 |
| arsenic | 0.005 | 0.19 | | | 0.00171 | -- | 0.00108 |
| beryllium | 0.032 | not available | | | <0.00100 | -- | <0.00100 |
| calcium | not available | not available | | | 77.8 | -- | 186 |
| cadmium | 0.005 | 0.00084 | | | 0.00112 | -- | <0.00100 |
| chromium | 0.05 | 0.141 | | | 0.00452 | -- | 0.00126 |
| copper | 0.0592 | 0.0089 | 1 | 0 - 9.9 | 0.0623 | -- | 0.00444 |
| iron | not available | not available | 0.3 | 0.2 - 5.500 | 24.4 | -- | 8.08 |
| mercury | 0.002 | 0.000012 | | | <0.000200 | -- | <0.000200 |
| magnesium | not available | not available | | 16.5 - 15,600 | 36.1 | -- | 48.8 |
| manganese | 2.24 | not available | 0.05 | 0.06 - 1,400 | 0.203 | -- | 9.78 |
| sodium | not available | not available | | 0 - 7,700 | 48.5 | -- | 22.1 |
| nickel | 0.32 | 0.12379 | | | 0.0137 | -- | 0.00476 |
| antimony | 0.0064 | not available | | | <0.00300 | -- | <0.00300 |
| selenium | 0.08 | 0.005 | | | 0.00358 | -- | 0.00413 |
| thallium | 0.00112 | not available | | | <0.00100 | -- | <0.00100 |
| zinc | 4.8 | 0.08227 | | | 0.254 | -- | 0.0127 |
| VOCs² (µg/l) | | | | | | | |
| p-isopropyltoluene | not available | not available | | | ND ⁴ | ND | 0.270 |

TABLE 3

ANALYTICAL RESULTS - SURFACE WATER SAMPLES

| Analytes | Regulatory Criteria Groundwater Method A or B, if no A | Regulatory Criteria AWQC for freshwater chronic | Secondary Max. Contaminant Levels | Range of leachate and domestic waste water ¹ | Sample ID | |
|---|--|---|---|--|---------------|----------------|
| | | | | | Seep-1-121803 | Seep-11-121803 |
| Conventional Chemistry Parameters (mg/l) | | | | | | |
| total alkalinity | | | | | 425 | 602 |
| bicarbonate alkalinity | | | | | 425 | 602 |
| hydroxide alkalinity | | | | | <5.00 | <5.00 |
| carbonate alkalinity | | | | 0 - 20,850 | <5.00 | <5.00 |
| ammonia-nitrogen | | | | | 2.19 | 3.57 |
| total dissolved solids | | | | | 500 | 830 |
| total organic carbon | | | | | 26.1 | 50.6 |
| Anions (mg/l) | | | | | | |
| chloride | | | 250 | 34 - 2,800 | 45.6 | 35.8 |
| nitrate-nitrogen | 1.6 | | | 0 - 1,416 | <0.200 | 1.07 |
| sulfate | | | 250 | 1 - 1,826 | 3.33 | 69.7 |

Notes

1. Range provided in "An Environmental Assessment of Potential Gas and Leachate Problems At Land Disposal Sites", EPA, 1973.
2. VOCs = Volatile organic compounds analyzed by EPA Method 8260.
3. "--" = Not Analyzed.
4. ND or "<" = analyte was not detected equal to or above the laboratory reporting limit.

APPENDIX A

Field Forms



WELL SAMPLING AND/OR DEVELOPMENT RECORD

Well ID: SEEP 4 Initial Depth to Water: NA

Sample ID: seep-1-121803 Duplicate ID: seep-11-121803 Depth to Water after Sampling: NA

Sample Depth: Surface Water Total Depth to Well: NA

Project and Task No.: 9156 Task 1 Well Diameter: NA

Project Name: Anacortes "A" Ave Landfill Casing/Borehole Volume: NA
(Circle one)

Date: 12/18/03 4 Casing/Borehole Volumes: NA
(Circle one)

Sampled By: T. Gray Total Casing/Borehole Volumes Removed: NA

Method of Purging: NA

Method of Sampling: submerge bottle

| Time | Intake Depth | Rate (gpm) | Cum. Vol. (gal) | Temp. (°C) | pH (units) | Specific Electrical Conductance (µS/cm) | Dissolved Oxygen (mg/l) | Redox Potential (mV SSCE) | Remarks (color, turbidity, and sediment) |
|------|--------------|------------|-----------------|----------------------|------------|---|-------------------------|---------------------------|--|
| 1255 | | | | 8.28 | 7.43 | 0.97 | 13.07 | -70 | 374 |
| 1257 | | | 8.46 | 8.87 8.87 | 8.87 | 0.95 | 8.16 | -124 | 178 |
| 1258 | | | | 8.50 | 9.15 | 0.95 | 8.16 6.81 | -132 | 166 |
| | | | | | | | | | |
| | | | | | | | | | |
| | | | | | | | | | |
| | | | | | | | | | |
| | | | | | | | | | |
| | | | | | | | | | |
| | | | | | | | | | |
| | | | | | | | | | |
| | | | | | | | | | |
| | | | | | | | | | |
| | | | | | | | | | |
| | | | | | | | | | |
| | | | | | | | | | |
| | | | | | | | | | |
| | | | | | | | | | |
| | | | | | | | | | |
| | | | | | | | | | |

| | | | | | |
|--|--------------|-------------------------------------|---------|--------------------|--|
| pH CALIBRATION (choose two) | | | | Model or Unit No.: | |
| Buffer Solution | pH 4.0 | pH 7.0 | pH 10.0 | Horiba U22 | |
| Field Temperature °C | | | | | |
| Instrument Reading | | | | | |
| SPECIFIC ELECTRICAL CONDUCTANCE - CALIBRATION | | | | Model or Unit No.: | |
| KCL Solution (µS/cm=µmhos/cm) | 1413 at 25°C | 12880 at 25°C | | | |
| Field Temperature °C | | | | | |
| Instrument Reading | | | | | |
| REDOX CALIBRATION | | DISSOLVED OXYGEN CALIBRATION | | Notes: | |
| Standard Solution | 468 mV | Salinity % | | | |
| Field Temperature °C | | Altitude | | | |
| Instrument Reading | | Instrument Reading | | | |
| Model or Unit No.: | | Model or Unit No.: | | | |
| Ag/AgCl Electrode (SSCE) | | | | | |



WELL SAMPLING AND/OR DEVELOPMENT RECORD

Well ID: Seep 2 Initial Depth to Water: NA
 Sample ID: Seep-2-121803 Duplicate ID: NA Depth to Water after Sampling: NA
 Sample Depth: Surface Water Total Depth to Well: NA
 Project and Task No.: 9156 Task 1 Well Diameter: NA
 Project Name: Anacortes "A" Ave Landfill 1 Casing/Borehole Volume: NA
 Date: 12/18/03 (Circle one)
 Sampled By: T. Gray 4 Casing/Borehole Volumes: NA
 Method of Purging: NA (Circle one)
 Method of Sampling: submerge bottle Total Casing/Borehole Volumes Removed: NA

| Time | Intake Depth | Rate (gpm) | Cum. Vol (gal) | Temp. (°C) | pH (units) | Specific Electrical Conductance (µS/cm) | Dissolved Oxygen (mg/l) | Redox Potential (mV SSCE) | Remarks (color, turbidity, and sediment) |
|------|--------------|------------|----------------|------------|------------|---|-------------------------|---------------------------|--|
| 1320 | | | | 8.13 | 7.78 | 1.21 | 16.56 | -30 | 83.8 |
| 1325 | | | | 8.19 | 7.93 | 1.28 | 11.37 | -38 | 45.9 |
| | | | | | | | | | |
| | | | | | | | | | |
| | | | | | | | | | |
| | | | | | | | | | |
| | | | | | | | | | |
| | | | | | | | | | |
| | | | | | | | | | |
| | | | | | | | | | |
| | | | | | | | | | |
| | | | | | | | | | |
| | | | | | | | | | |
| | | | | | | | | | |
| | | | | | | | | | |
| | | | | | | | | | |
| | | | | | | | | | |
| | | | | | | | | | |
| | | | | | | | | | |
| | | | | | | | | | |
| | | | | | | | | | |

| | | | | | |
|--|--------------|-------------------------------------|---------|---|--|
| pH CALIBRATION (choose two) | | | | Model or Unit No.: <u>Horiba UZZ</u> | |
| Buffer Solution | pH 4.0 | pH 7.0 | pH 10.0 | | |
| Field Temperature °C | | | | | |
| Instrument Reading | | | | | |
| SPECIFIC ELECTRICAL CONDUCTANCE - CALIBRATION | | | | Model or Unit No.: | |
| KCL Solution (µS/cm=µmhos/cm) | 1413 at 25°C | 12880 at 25°C | | | |
| Field Temperature °C | | | | | |
| Instrument Reading | | | | | |
| REDOX CALIBRATION | | DISSOLVED OXYGEN CALIBRATION | | Notes: | |
| Standard Solution | 468 mV | Salinity % | | | |
| Field Temperature °C | | Altitude | | | |
| Instrument Reading | | Instrument Reading | | | |
| Model or Unit No.: | | Model or Unit No.: | | | |
| Ag/AgCl Electrode (SSCE) | | | | | |

APPENDIX B

Lab Sheets



Seattle 11720 In Creek Pkwy N, Suite 400, Bothell, WA 98011-8244
425.420.9200 fax 425.420.9210
Spokane East 11115 Montgomery, Suite B, Spokane, WA 99206-4776
509.924.9200 fax 509.924.9290
Portland 9405 SW Nimbus Avenue, Beaverton, OR 97008-7132
503.906.9200 fax 503.906.9210
Bend 20332 Empire Avenue, Suite F-1, Bend, OR 97701-5711
541.383.9310 fax 541.382.7588
Anchorage 2000 W International Airport Road, Suite A-10, Anchorage, AK 99502-1119
907.563.9200 fax 907.563.9210

08 January 2004

Kathleen Goodman
Geomatrix Consultants, Inc. - Seattle
600 University Street, Suite 1020
Seattle, WA 98101
RE: Anacortes A Avenue

Enclosed are the results of analyses for samples received by the laboratory on 12/18/03 15:44. If you have any questions concerning this report, please feel free to contact me.

Sincerely,

Kortland Orr
PM



Seattle 11720 North Creek Pkwy N, Suite 400, Bothell, WA 98011-8244
425.420.9200 fax 425.420.9210
Spokane East 11115 Montgomery, Suite B, Spokane, WA 99206-4776
509.924.9200 fax 509.924.9290
Portland 9405 SW Nimbus Avenue, Beaverton, OR 97008-7132
503.906.9200 fax 503.906.9210
Bend 20332 Empire Avenue, Suite F-1, Bend, OR 97701-5711
541.383.9310 fax 541.382.7588
Anchorage 2000 W International Airport Road, Suite A-10, Anchorage, AK 99502-1119
907.563.9200 fax 907.563.9210

Geomatrix Consultants, Inc. - Seattle
600 University Street, Suite 1020
Seattle, WA 98101

Project: Anacortes A Avenue
Project Number: 9156
Project Manager: Kathleen Goodman

Reported:
01/08/04 18:28

ANALYTICAL REPORT FOR SAMPLES

| Sample ID | Laboratory ID | Matrix | Date Sampled | Date Received |
|----------------|---------------|--------|----------------|----------------|
| S-1-121803 | B3L0652-01 | Soil | 12/18/03 10:07 | 12/18/03 15:44 |
| S-2-121803 | B3L0652-02 | Soil | 12/18/03 10:38 | 12/18/03 15:44 |
| S-3-121803 | B3L0652-03 | Soil | 12/18/03 11:03 | 12/18/03 15:44 |
| S-4-121803 | B3L0652-04 | Soil | 12/18/03 11:25 | 12/18/03 15:44 |
| S-5-121803 | B3L0652-05 | Soil | 12/18/03 12:05 | 12/18/03 15:44 |
| Seep-1-121803 | B3L0652-06 | Water | 12/18/03 12:41 | 12/18/03 15:44 |
| Seep-2-121803 | B3L0652-07 | Water | 12/18/03 13:19 | 12/18/03 15:44 |
| Seep-11-121803 | B3L0652-08 | Water | 12/18/03 12:41 | 12/18/03 15:44 |
| Trip Blank | B3L0652-09 | Water | 12/18/03 12:00 | 12/18/03 15:44 |

North Creek Analytical - Bothell

The results in this report apply to the samples analyzed in accordance with the chain of custody document. This analytical report must be reproduced in its entirety.

Kortland Orr, PM

North Creek Analytical, Inc.
Environmental Laboratory Network

Page 1 of 50



Seattle 11720 North Creek Pkwy N, Suite 400, Bothell, WA 98011-8244
 425.420.9200 fax 425.420.9210
 Spokane East 11115 Montgomery, Suite B, Spokane, WA 99206-4776
 509.924.9200 fax 509.924.9290
 Portland 9405 SW Nimbus Avenue, Beaverton, OR 97008-7132
 503.906.9200 fax 503.906.9210
 Bend 20332 Empire Avenue, Suite F-1, Bend, OR 97701-5711
 541.383.9310 fax 541.382.7588
 Anchorage 2000 W International Airport Road, Suite A-10, Anchorage, AK 99502-1119
 907.563.9200 fax 907.563.9210

Geomatrix Consultants, Inc. - Seattle
 600 University Street, Suite 1020
 Seattle, WA 98101

Project: Anacortes A Avenue
 Project Number: 9156
 Project Manager: Kathleen Goodman

Reported:
 01/08/04 18:28

Semivolatile Petroleum Products by NWTPH-Dx (w/o Acid/Silica Gel Clean-up)
North Creek Analytical - Bothell

| Analyte | Result | Reporting Limit | Units | Dilution | Batch | Prepared | Analyzed | Method | Notes |
|--|--------|-----------------|-----------|----------|---------|----------|----------|----------|-------|
| S-1-121803 (B3L0652-01) Soil Sampled: 12/18/03 10:07 Received: 12/18/03 15:44 | | | | | | | | | |
| Diesel Range Hydrocarbons | 22.3 | 10.0 | mg/kg dry | 1 | 3L22030 | 12/22/03 | 12/23/03 | NWTPH-Dx | D-09 |
| Lube Oil Range Hydrocarbons | 80.7 | 25.0 | " | " | " | " | " | " | |
| Surrogate: 2-FBP | 78.8 % | 50-150 | | | " | " | " | " | |
| Surrogate: Octacosane | 120 % | 57-120 | | | " | " | " | " | |
| S-2-121803 (B3L0652-02) Soil Sampled: 12/18/03 10:38 Received: 12/18/03 15:44 | | | | | | | | | |
| Diesel Range Hydrocarbons | 437 | 100 | mg/kg dry | 10 | 3L22030 | 12/22/03 | 12/23/03 | NWTPH-Dx | D-09 |
| Lube Oil Range Hydrocarbons | 2970 | 250 | " | " | " | " | " | " | |
| Surrogate: 2-FBP | % | 50-150 | | | " | " | " | " | S-01 |
| Surrogate: Octacosane | % | 57-120 | | | " | " | " | " | S-01 |
| S-3-121803 (B3L0652-03) Soil Sampled: 12/18/03 11:03 Received: 12/18/03 15:44 | | | | | | | | | |
| Diesel Range Hydrocarbons | 116 | 20.0 | mg/kg dry | 2 | 3L22030 | 12/22/03 | 12/23/03 | NWTPH-Dx | D-09 |
| Lube Oil Range Hydrocarbons | 504 | 50.0 | " | " | " | " | " | " | |
| Surrogate: 2-FBP | 106 % | 50-150 | | | " | " | " | " | |
| Surrogate: Octacosane | 117 % | 57-120 | | | " | " | " | " | |
| S-4-121803 (B3L0652-04) Soil Sampled: 12/18/03 11:25 Received: 12/18/03 15:44 | | | | | | | | | |
| Diesel Range Hydrocarbons | ND | 200 | mg/kg dry | 20 | 3L22030 | 12/22/03 | 12/23/03 | NWTPH-Dx | |
| Lube Oil Range Hydrocarbons | 898 | 500 | " | " | " | " | " | " | |
| Surrogate: 2-FBP | % | 50-150 | | | " | " | " | " | S-01 |
| Surrogate: Octacosane | % | 57-120 | | | " | " | " | " | S-01 |
| S-5-121803 (B3L0652-05) Soil Sampled: 12/18/03 12:05 Received: 12/18/03 15:44 | | | | | | | | | |
| Diesel Range Hydrocarbons | 10.6 | 10.0 | mg/kg dry | 1 | 3L22030 | 12/22/03 | 12/23/03 | NWTPH-Dx | D-09 |
| Lube Oil Range Hydrocarbons | 44.4 | 25.0 | " | " | " | " | " | " | |
| Surrogate: 2-FBP | 72.4 % | 50-150 | | | " | " | " | " | |
| Surrogate: Octacosane | 113 % | 57-120 | | | " | " | " | " | |

North Creek Analytical - Bothell

The results in this report apply to the samples analyzed in accordance with the chain of custody document. This analytical report must be reproduced in its entirety.

Kortland Orr, PM

North Creek Analytical, Inc.
 Environmental Laboratory Network



Seattle 11720 North Creek Parkway N, Suite 400, Bothell, WA 98011-8244
 425.420.9200 fax 425.420.9210
 Spokane East 11115 Montgomery, Suite B, Spokane, WA 99206-4776
 509.924.9200 fax 509.924.9290
 Portland 9405 SW Nimbus Avenue, Beaverton, OR 97008-7132
 503.906.9200 fax 503.906.9210
 Bend 20332 Emplre Avenue, Suite F-1, Bend, OR 97701-5711
 541.383.9310 fax 541.382.7588
 Anchorage 2000 W International Airport Road, Suite A-10, Anchorage, AK 99502-1119
 907.563.9200 fax 907.563.9210

Geomatrix Consultants, Inc. - Seattle
 600 University Street, Suite 1020
 Seattle, WA 98101

Project: Anacortes A Avenue
 Project Number: 9156
 Project Manager: Kathleen Goodman

Reported:
 01/08/04 18:28

Total Metals by EPA 6000/7000 Series Methods
North Creek Analytical - Bothell

| Analyte | Result | Reporting Limit | Units | Dilution | Batch | Prepared | Analyzed | Method | Notes |
|--|--------|-----------------|-----------|----------|---------|----------|----------|-----------|-------|
| S-1-121803 (B3L0652-01) Soil Sampled: 12/18/03 10:07 Received: 12/18/03 15:44 | | | | | | | | | |
| Silver | ND | 0.758 | mg/kg dry | 1 | 3L29033 | 12/29/03 | 01/06/04 | EPA 6020 | |
| Aluminum | 11300 | 1520 | " | 10 | " | " | 01/08/04 | " | |
| Arsenic | 2.60 | 0.758 | " | 1 | " | " | 01/06/04 | " | |
| Beryllium | ND | 0.758 | " | " | " | " | 01/07/04 | " | |
| Cadmium | ND | 0.758 | " | " | " | " | 01/06/04 | " | |
| Chromium | 25.0 | 0.758 | " | " | " | " | 01/07/04 | " | |
| Copper | 21.9 | 0.758 | " | " | " | " | 01/06/04 | " | |
| Mercury | ND | 0.100 | " | " | 3L23034 | 12/23/03 | 12/24/03 | EPA 7471A | |
| Nickel | 36.1 | 0.758 | " | " | 3L29033 | 12/29/03 | 01/07/04 | EPA 6020 | |
| Antimony | ND | 2.27 | " | " | " | " | 01/06/04 | " | |
| Selenium | ND | 0.758 | " | " | " | " | " | " | |
| Thallium | ND | 0.758 | " | " | " | " | " | " | |
| Zinc | 50.5 | 7.58 | " | " | " | " | " | " | |
| S-2-121803 (B3L0652-02) Soil Sampled: 12/18/03 10:38 Received: 12/18/03 15:44 | | | | | | | | | |
| Silver | ND | 0.714 | mg/kg dry | 1 | 3L29033 | 12/29/03 | 01/06/04 | EPA 6020 | |
| Aluminum | 12300 | 1430 | " | 10 | " | " | 01/08/04 | " | |
| Arsenic | 3.05 | 0.714 | " | 1 | " | " | 01/06/04 | " | |
| Beryllium | ND | 0.714 | " | " | " | " | 01/07/04 | " | |
| Cadmium | ND | 0.714 | " | " | " | " | 01/06/04 | " | |
| Chromium | 28.8 | 0.714 | " | " | " | " | 01/07/04 | " | |
| Copper | 27.1 | 0.714 | " | " | " | " | 01/06/04 | " | |
| Mercury | ND | 0.100 | " | " | 3L23034 | 12/23/03 | 12/24/03 | EPA 7471A | |
| Nickel | 39.1 | 0.714 | " | " | 3L29033 | 12/29/03 | 01/07/04 | EPA 6020 | |
| Antimony | ND | 2.14 | " | " | " | " | 01/06/04 | " | |
| Selenium | ND | 0.714 | " | " | " | " | " | " | |
| Thallium | ND | 0.714 | " | " | " | " | " | " | |
| Zinc | 73.7 | 7.14 | " | " | " | " | " | " | |

North Creek Analytical - Bothell

The results in this report apply to the samples analyzed in accordance with the chain of custody document. This analytical report must be reproduced in its entirety.

Kortland Orr, PM

North Creek Analytical, Inc.
 Environmental Laboratory Network



Seattle 11720 North Creek Pkwy N, Suite 400, Bothell, WA 98011-8244
 425.420.9200 fax 425.420.9210
 Spokane East 11115 Montgomery, Suite B, Spokane, WA 99206-4776
 509.924.9200 fax 509.924.9290
 Portland 9405 SW Nimbus Avenue, Beaverton, OR 97008-7132
 503.906.9200 fax 503.906.9210
 Bend 20332 Empire Avenue, Suite F-1, Bend, OR 97701-5711
 541.383.9310 fax 541.382.7588
 Anchorage 2000 W International Airport Road, Suite A-10, Anchorage, AK 99502-1119
 907.563.9200 fax 907.563.9210

Geomatrix Consultants, Inc. - Seattle
 600 University Street, Suite 1020
 Seattle, WA 98101

Project: Anacortes A Avenue
 Project Number: 9156
 Project Manager: Kathleen Goodman

Reported:
 01/08/04 18:28

Total Metals by EPA 6000/7000 Series Methods
North Creek Analytical - Bothell

| Analyte | Result | Reporting Limit | Units | Dilution | Batch | Prepared | Analyzed | Method | Notes |
|---------|--------|-----------------|-------|----------|-------|----------|----------|--------|-------|
|---------|--------|-----------------|-------|----------|-------|----------|----------|--------|-------|

S-3-121803 (B3L0652-03) Soil Sampled: 12/18/03 11:03 Received: 12/18/03 15:44

| | | | | | | | | | |
|-----------|-------|-------|-----------|----|---------|----------|----------|-----------|--|
| Silver | ND | 0.500 | mg/kg dry | 1 | 3L29033 | 12/29/03 | 01/06/04 | EPA 6020 | |
| Aluminum | 13500 | 1000 | " | 10 | " | " | 01/08/04 | " | |
| Arsenic | 3.22 | 0.500 | " | 1 | " | " | 01/06/04 | " | |
| Beryllium | ND | 0.500 | " | " | " | " | 01/07/04 | " | |
| Cadmium | ND | 0.500 | " | " | " | " | 01/06/04 | " | |
| Chromium | 34.9 | 0.500 | " | " | " | " | 01/07/04 | " | |
| Copper | 28.9 | 0.500 | " | " | " | " | 01/06/04 | " | |
| Mercury | ND | 0.100 | " | " | 3L23034 | 12/23/03 | 12/24/03 | EPA 7471A | |
| Nickel | 50.7 | 0.500 | " | " | 3L29033 | 12/29/03 | 01/07/04 | EPA 6020 | |
| Antimony | ND | 1.50 | " | " | " | " | 01/06/04 | " | |
| Selenium | ND | 0.500 | " | " | " | " | " | " | |
| Thallium | ND | 0.500 | " | " | " | " | " | " | |
| Zinc | 68.2 | 5.00 | " | " | " | " | " | " | |

S-4-121803 (B3L0652-04) Soil Sampled: 12/18/03 11:25 Received: 12/18/03 15:44

| | | | | | | | | | |
|-----------|-------|-------|-----------|----|---------|----------|----------|-----------|--|
| Silver | ND | 0.500 | mg/kg dry | 1 | 3L29033 | 12/29/03 | 01/06/04 | EPA 6020 | |
| Aluminum | 20400 | 1000 | " | 10 | " | " | 01/08/04 | " | |
| Arsenic | 1.99 | 0.500 | " | 1 | " | " | 01/06/04 | " | |
| Beryllium | ND | 0.500 | " | " | " | " | 01/07/04 | " | |
| Cadmium | ND | 0.500 | " | " | " | " | 01/06/04 | " | |
| Chromium | 57.2 | 0.500 | " | " | " | " | 01/07/04 | " | |
| Copper | 31.2 | 0.500 | " | " | " | " | 01/06/04 | " | |
| Mercury | ND | 0.100 | " | " | 3L23034 | 12/23/03 | 12/24/03 | EPA 7471A | |
| Nickel | 76.7 | 0.500 | " | " | 3L29033 | 12/29/03 | 01/07/04 | EPA 6020 | |
| Antimony | ND | 1.50 | " | " | " | " | 01/06/04 | " | |
| Selenium | 0.532 | 0.500 | " | " | " | " | " | " | |
| Thallium | ND | 0.500 | " | " | " | " | " | " | |
| Zinc | 41.4 | 5.00 | " | " | " | " | " | " | |

North Creek Analytical - Bothell

The results in this report apply to the samples analyzed in accordance with the chain of custody document. This analytical report must be reproduced in its entirety.

Kortland Orr, PM

North Creek Analytical, Inc.
 Environmental Laboratory Network

Page 4 of 50



Seattle 11720 North Cree...wy N, Suite 400, Bothell, WA 98011-8244
 425.420.9200 fax 425.420.9210
 Spokane East 11115 Montgomery, Suite B, Spokane, WA 99206-4776
 509.924.9200 fax 509.924.9290
 Portland 9405 SW Nimbus Avenue, Beaverton, OR 97008-7132
 503.906.9200 fax 503.906.9210
 Bend 20332 Empire Avenue, Suite F-1, Bend, OR 97701-5711
 541.383.9310 fax 541.382.7588
 Anchorage 2000 W International Airport Road, Suite A-10, Anchorage, AK 99502-1119
 907.563.9200 fax 907.563.9210

Geomatrix Consultants, Inc. - Seattle
 600 University Street, Suite 1020
 Seattle, WA 98101

Project: Anacortes A Avenue
 Project Number: 9156
 Project Manager: Kathleen Goodman

Reported:
 01/08/04 18:28

Total Metals by EPA 6000/7000 Series Methods
North Creek Analytical - Bothell

| Analyte | Result | Reporting Limit | Units | Dilution | Batch | Prepared | Analyzed | Method | Notes |
|--|---------|-----------------|-----------|----------|---------|----------|----------|-----------|-------|
| S-5-121803 (B3L0652-05) Soil Sampled: 12/18/03 12:05 Received: 12/18/03 15:44 | | | | | | | | | |
| Silver | ND | 0.649 | mg/kg dry | 1 | 3L29033 | 12/29/03 | 01/06/04 | EPA 6020 | |
| Aluminum | 20200 | 1300 | " | 10 | " | " | 01/08/04 | " | |
| Arsenic | 6.06 | 0.649 | " | 1 | " | " | 01/06/04 | " | |
| Beryllium | ND | 0.649 | " | " | " | " | 01/07/04 | " | |
| Cadmium | ND | 0.649 | " | " | " | " | 01/06/04 | " | |
| Chromium | 47.7 | 0.649 | " | " | " | " | 01/07/04 | " | |
| Copper | 37.3 | 0.649 | " | " | " | " | 01/06/04 | " | |
| Mercury | ND | 0.100 | " | " | 3L23034 | 12/23/03 | 12/24/03 | EPA 7471A | |
| Nickel | 50.7 | 0.649 | " | " | 3L29033 | 12/29/03 | 01/07/04 | EPA 6020 | |
| Antimony | ND | 1.95 | " | " | " | " | 01/06/04 | " | |
| Selenium | ND | 0.649 | " | " | " | " | " | " | |
| Thallium | ND | 0.649 | " | " | " | " | " | " | |
| Zinc | 59.3 | 6.49 | " | " | " | " | " | " | |
| Seep-1-121803 (B3L0652-06) Water Sampled: 12/18/03 12:41 Received: 12/18/03 15:44 | | | | | | | | | |
| Silver | ND | 0.00100 | mg/l | 1 | 3L23012 | 12/23/03 | 12/24/03 | EPA 6020 | |
| Aluminum | 1.85 | 0.300 | " | " | " | " | 01/03/04 | " | |
| Arsenic | 0.00171 | 0.00100 | " | " | " | " | 12/24/03 | " | |
| Beryllium | ND | 0.00100 | " | " | " | " | " | " | |
| Calcium | 77.8 | 0.250 | " | " | 3L23036 | 12/23/03 | 12/29/03 | EPA 6010B | |
| Cadmium | 0.00112 | 0.00100 | " | " | 3L23012 | 12/23/03 | 12/24/03 | EPA 6020 | |
| Chromium | 0.00452 | 0.00100 | " | " | " | " | " | " | |
| Copper | 0.0623 | 0.00100 | " | " | " | " | " | " | |
| Iron | 24.4 | 0.150 | " | " | 3L23036 | 12/23/03 | 12/29/03 | EPA 6010B | |
| Mercury | ND | 0.000200 | " | " | 3L24019 | 12/24/03 | 12/24/03 | EPA 7470A | |
| Magnesium | 36.1 | 0.500 | " | " | 3L23036 | 12/23/03 | 12/29/03 | EPA 6010B | |
| Manganese | 0.203 | 0.0100 | " | " | " | " | " | " | |
| Sodium | 48.5 | 0.250 | " | " | " | " | " | " | |
| Nickel | 0.0137 | 0.00100 | " | " | 3L23012 | 12/23/03 | 12/24/03 | EPA 6020 | |
| Antimony | ND | 0.00300 | " | " | " | " | " | " | |
| Selenium | 0.00358 | 0.00100 | " | " | " | " | " | " | |
| Thallium | ND | 0.00100 | " | " | " | " | " | " | |
| Zinc | 0.254 | 0.0100 | " | " | " | " | " | " | |

North Creek Analytical - Bothell

The results in this report apply to the samples analyzed in accordance with the chain of custody document. This analytical report must be reproduced in its entirety.

Kortland Orr, PM

North Creek Analytical, Inc.
 Environmental Laboratory Network



Seattle 11720 North Creek Pkwy N, Suite 400, Bothell, WA 98011-8244
 425.420.9200 fax 425.420.9210
 Spokane East 11115 Montgomery, Suite B, Spokane, WA 99206-4776
 509.924.9200 fax 509.924.9290
 Portland 9405 SW Nimbus Avenue, Beaverton, OR 97008-7132
 503.906.9200 fax 503.906.9210
 Bend 20332 Empire Avenue, Suite F-1, Bend, OR 97701-5711
 541.383.9310 fax 541.382.7588
 Anchorage 2000 W International Airport Road, Suite A-10, Anchorage, AK 99502-1119
 907.563.9200 fax 907.563.9210

Geomatrix Consultants, Inc. - Seattle
 600 University Street, Suite 1020
 Seattle, WA 98101

Project: Anacortes A Avenue
 Project Number: 9156
 Project Manager: Kathleen Goodman

Reported:
 01/08/04 18:28

Total Metals by EPA 6000/7000 Series Methods
North Creek Analytical - Bothell

| Analyte | Result | Reporting Limit | Units | Dilution | Batch | Prepared | Analyzed | Method | Notes |
|---|---------|-----------------|-------|----------|---------|----------|----------|-----------|-------|
| Seep-2-121803 (B3L0652-07) Water Sampled: 12/18/03 13:19 Received: 12/18/03 15:44 | | | | | | | | | |
| Silver | ND | 0.00100 | mg/l | 1 | 3L23012 | 12/23/03 | 12/24/03 | EPA 6020 | |
| Aluminum | ND | 0.300 | " | " | " | " | 01/03/04 | " | |
| Arsenic | 0.00108 | 0.00100 | " | " | " | " | 12/24/03 | " | |
| Beryllium | ND | 0.00100 | " | " | " | " | " | " | |
| Calcium | 186 | 0.250 | " | " | 3L23036 | 12/23/03 | 12/29/03 | EPA 6010B | |
| Cadmium | ND | 0.00100 | " | " | 3L23012 | 12/23/03 | 12/24/03 | EPA 6020 | |
| Chromium | 0.00126 | 0.00100 | " | " | " | " | " | " | |
| Copper | 0.00444 | 0.00100 | " | " | " | " | " | " | |
| Iron | 8.08 | 0.150 | " | " | 3L23036 | 12/23/03 | 12/29/03 | EPA 6010B | |
| Mercury | ND | 0.000200 | " | " | 3L24019 | 12/24/03 | 12/24/03 | EPA 7470A | |
| Magnesium | 48.8 | 0.500 | " | " | 3L23036 | 12/23/03 | 12/29/03 | EPA 6010B | |
| Manganese | 9.78 | 0.0100 | " | " | " | " | " | " | |
| Sodium | 22.1 | 0.250 | " | " | " | " | " | " | |
| Nickel | 0.00476 | 0.00100 | " | " | 3L23012 | 12/23/03 | 01/02/04 | EPA 6020 | |
| Antimony | ND | 0.00300 | " | " | " | " | 12/24/03 | " | |
| Selenium | 0.00413 | 0.00100 | " | " | " | " | " | " | |
| Thallium | ND | 0.00100 | " | " | " | " | " | " | |
| Zinc | 0.0127 | 0.0100 | " | " | " | " | " | " | |

North Creek Analytical - Bothell

The results in this report apply to the samples analyzed in accordance with the chain of custody document. This analytical report must be reproduced in its entirety.

Kortland Orr, PM

North Creek Analytical, Inc.
 Environmental Laboratory Network



Seattle 11720 North Creek Pkwy N, Suite 400, Bothell, WA 98011-8244
 425.420.9200 fax 425.420.9210
 Spokane East 11115 Montgomery, Suite B, Spokane, WA 99206-4776
 509.924.9200 fax 509.924.9290
 Portland 9405 SW Nimbus Avenue, Beaverton, OR 97008-7132
 503.906.9200 fax 503.906.9210
 Bend 20332 Empire Avenue, Suite F-1, Bend, OR 97701-5711
 541.383.9310 fax 541.382.7588
 Anchorage 2000 W International Airport Road, Suite A-10, Anchorage, AK 99502-1119
 907.563.9200 fax 907.563.9210

Geomatrix Consultants, Inc. - Seattle
 600 University Street, Suite 1020
 Seattle, WA 98101

Project: Anacortes A Avenue
 Project Number: 9156
 Project Manager: Kathleen Goodman

Reported:
 01/08/04 18:28

Volatile Organic Compounds by EPA Method 8260B
North Creek Analytical - Bothell

| Analyte | Result | Reporting Limit | Units | Dilution | Batch | Prepared | Analyzed | Method | Notes |
|---|--------|-----------------|-------|----------|---------|----------|----------|-----------|-------|
| Seep-1-121803 (B3L0652-06) Water Sampled: 12/18/03 12:41 Received: 12/18/03 15:44 | | | | | | | | | |
| 1,1,1,2-Tetrachloroethane | ND | 0.200 | ug/l | 1 | 3L23013 | 12/22/03 | 12/22/03 | EPA 8260B | |
| 1,1,1-Trichloroethane | ND | 0.200 | " | " | " | " | " | " | |
| 1,1,2,2-Tetrachloroethane | ND | 0.500 | " | " | " | " | " | " | |
| 1,1,2-Trichloroethane | ND | 0.200 | " | " | " | " | " | " | |
| 1,1-Dichloroethane | ND | 0.200 | " | " | " | " | " | " | |
| 1,1-Dichloroethene | ND | 0.200 | " | " | " | " | " | " | |
| 1,1-Dichloropropene | ND | 0.200 | " | " | " | " | " | " | |
| 1,2,3-Trichlorobenzene | ND | 0.200 | " | " | " | " | " | " | |
| 1,2,3-Trichloropropane | ND | 0.500 | " | " | " | " | " | " | |
| 1,2,4-Trichlorobenzene | ND | 0.200 | " | " | " | " | " | " | |
| 1,2,4-Trimethylbenzene | ND | 0.200 | " | " | " | " | " | " | |
| 1,2-Dibromo-3-chloropropane | ND | 0.500 | " | " | " | " | " | " | |
| 1,2-Dibromoethane | ND | 0.200 | " | " | " | " | " | " | |
| 1,2-Dichlorobenzene | ND | 0.200 | " | " | " | " | " | " | |
| 1,2-Dichloroethane | ND | 0.200 | " | " | " | " | " | " | |
| 1,2-Dichloropropane | ND | 0.200 | " | " | " | " | " | " | |
| 1,3,5-Trimethylbenzene | ND | 0.500 | " | " | " | " | " | " | |
| 1,3-Dichlorobenzene | ND | 0.200 | " | " | " | " | " | " | |
| 1,3-Dichloropropane | ND | 0.200 | " | " | " | " | " | " | |
| 1,4-Dichlorobenzene | ND | 0.200 | " | " | " | " | " | " | |
| 2,2-Dichloropropane | ND | 0.500 | " | " | " | " | " | " | |
| 2-Butanone | ND | 2.00 | " | " | " | " | " | " | |
| 2-Chlorotoluene | ND | 0.500 | " | " | " | " | " | " | |
| 2-Hexanone | ND | 2.00 | " | " | " | " | " | " | |
| 4-Chlorotoluene | ND | 0.500 | " | " | " | " | " | " | |
| 4-Methyl-2-pentanone | ND | 2.00 | " | " | " | " | " | " | |
| Acetone | ND | 10.0 | " | " | " | " | " | " | |
| Benzene | ND | 0.200 | " | " | " | " | " | " | |
| Bromobenzene | ND | 0.500 | " | " | " | " | " | " | |
| Bromochloromethane | ND | 0.200 | " | " | " | " | " | " | |
| Bromodichloromethane | ND | 0.200 | " | " | " | " | " | " | |
| Bromoform | ND | 0.200 | " | " | " | " | " | " | |
| Bromomethane | ND | 2.00 | " | " | " | " | " | " | |
| Carbon disulfide | ND | 0.500 | " | " | " | " | " | " | |
| Carbon tetrachloride | ND | 0.200 | " | " | " | " | " | " | |
| Chlorobenzene | ND | 0.200 | " | " | " | " | " | " | |
| Chloroethane | ND | 1.00 | " | " | " | " | " | " | |
| Chloroform | ND | 0.200 | " | " | " | " | " | " | |

North Creek Analytical - Bothell

The results in this report apply to the samples analyzed in accordance with the chain of custody document. This analytical report must be reproduced in its entirety.

Kortland Orr, PM

North Creek Analytical, Inc.
 Environmental Laboratory Network



Seattle 1172 North Creek Pkwy N, Suite 400, Bothell, WA 98011-8244
 425.420.9200 fax 425.420.9210
 Spokane East 11115 Montgomery, Suite B, Spokane, WA 99206-4776
 509.924.9200 fax 509.924.9290
 Portland 9405 SW Nimbus Avenue, Beaverton, OR 97008-7132
 503.906.9200 fax 503.906.9210
 Bend 20332 Empire Avenue, Suite F-1, Bend, OR 97701-5711
 541.383.9310 fax 541.382.7588
 Anchorage 2000 W International Airport Road, Suite A-10, Anchorage, AK 99502-1119
 907.563.9200 fax 907.563.9210

Geomatrix Consultants, Inc. - Seattle
 600 University Street, Suite 1020
 Seattle, WA 98101

Project: Anacortes A Avenue
 Project Number: 9156
 Project Manager: Kathleen Goodman

Reported:
 01/08/04 18:28

Volatile Organic Compounds by EPA Method 8260B
North Creek Analytical - Bothell

| Analyte | Result | Reporting Limit | Units | Dilution | Batch | Prepared | Analyzed | Method | Notes |
|--|--------|-----------------|-------|----------|---------|----------|----------|-----------|-------|
| Seep-1-121803 (B3L0652-06) Water Sampled: 12/18/03 12:41 Received: 12/18/03 15:44 | | | | | | | | | |
| Chloromethane | ND | 1.00 | ug/l | 1 | 3L23013 | 12/22/03 | 12/22/03 | EPA 8260B | |
| cis-1,2-Dichloroethene | ND | 0.200 | " | " | " | " | " | " | |
| cis-1,3-Dichloropropene | ND | 0.200 | " | " | " | " | " | " | |
| Dibromochloromethane | ND | 0.200 | " | " | " | " | " | " | |
| Dibromomethane | ND | 0.200 | " | " | " | " | " | " | |
| Dichlorodifluoromethane | ND | 0.500 | " | " | " | " | " | " | |
| Ethylbenzene | ND | 0.200 | " | " | " | " | " | " | |
| Hexachlorobutadiene | ND | 0.500 | " | " | " | " | " | " | |
| Isopropylbenzene | ND | 0.500 | " | " | " | " | " | " | |
| m,p-Xylene | ND | 0.500 | " | " | " | " | " | " | |
| Methyl tert-butyl ether | ND | 1.00 | " | " | " | " | " | " | |
| Methylene chloride | ND | 5.00 | " | " | " | " | " | " | |
| n-Butylbenzene | ND | 0.200 | " | " | " | " | " | " | |
| n-Propylbenzene | ND | 0.500 | " | " | " | " | " | " | |
| Naphthalene | ND | 0.500 | " | " | " | " | " | " | |
| o-Xylene | ND | 0.250 | " | " | " | " | " | " | |
| p-Isopropyltoluene | ND | 0.200 | " | " | " | " | " | " | |
| sec-Butylbenzene | ND | 0.200 | " | " | " | " | " | " | |
| Styrene | ND | 0.500 | " | " | " | " | " | " | |
| tert-Butylbenzene | ND | 0.500 | " | " | " | " | " | " | |
| Tetrachloroethene | ND | 0.200 | " | " | " | " | " | " | |
| Toluene | ND | 0.200 | " | " | " | " | " | " | |
| trans-1,2-Dichloroethene | ND | 0.200 | " | " | " | " | " | " | |
| trans-1,3-Dichloropropene | ND | 0.200 | " | " | " | " | " | " | |
| Trichloroethene | ND | 0.200 | " | " | " | " | " | " | |
| Trichlorofluoromethane | ND | 0.500 | " | " | " | " | " | " | |
| Vinyl chloride | ND | 0.200 | " | " | " | " | " | " | |
| Surrogate: 1,2-DCA-d4 | 99.8 % | 70-130 | | | " | " | " | " | |
| Surrogate: Toluene-d8 | 97.0 % | 70-130 | | | " | " | " | " | |
| Surrogate: 4-BFB | 105 % | 70-130 | | | " | " | " | " | |

North Creek Analytical - Bothell

The results in this report apply to the samples analyzed in accordance with the chain of custody document. This analytical report must be reproduced in its entirety.

Kortland Orr, PM

North Creek Analytical, Inc.
 Environmental Laboratory Network



Seattle 11720 North Creek Parkway N, Suite 400, Bothell, WA 98011-8244
 425.420.9200 fax 425.420.9210
 Spokane East 11115 Montgomery, Suite B, Spokane, WA 99206-4776
 509.924.9200 fax 509.924.9290
 Portland 9405 SW Nimbus Avenue, Beaverton, OR 97008-7132
 503.906.9200 fax 503.906.9210
 Bend 20332 Empire Avenue, Suite F-1, Bend, OR 97701-5711
 541.383.9310 fax 541.382.7588
 Anchorage 2000 W International Airport Road, Suite A-10, Anchorage, AK 99502-1119
 907.563.9200 fax 907.563.9210

Geomatrix Consultants, Inc. - Seattle
 600 University Street, Suite 1020
 Seattle, WA 98101

Project: Anacortes A Avenue
 Project Number: 9156
 Project Manager: Kathleen Goodman

Reported:
 01/08/04 18:28

Volatile Organic Compounds by EPA Method 8260B
North Creek Analytical - Bothell

| Analyte | Result | Reporting Limit | Units | Dilution | Batch | Prepared | Analyzed | Method | Notes |
|---|--------|-----------------|-------|----------|---------|----------|----------|-----------|-------|
| Seep-2-121803 (B3L0652-07) Water Sampled: 12/18/03 13:19 Received: 12/18/03 15:44 | | | | | | | | | |
| 1,1,1,2-Tetrachloroethane | ND | 0.200 | ug/l | 1 | 3L23013 | 12/22/03 | 12/22/03 | EPA 8260B | |
| 1,1,1-Trichloroethane | ND | 0.200 | " | " | " | " | " | " | |
| 1,1,2,2-Tetrachloroethane | ND | 0.500 | " | " | " | " | " | " | |
| 1,1,2-Trichloroethane | ND | 0.200 | " | " | " | " | " | " | |
| 1,1-Dichloroethane | ND | 0.200 | " | " | " | " | " | " | |
| 1,1-Dichloroethene | ND | 0.200 | " | " | " | " | " | " | |
| 1,1-Dichloropropene | ND | 0.200 | " | " | " | " | " | " | |
| 1,2,3-Trichlorobenzene | ND | 0.200 | " | " | " | " | " | " | |
| 1,2,3-Trichloropropane | ND | 0.500 | " | " | " | " | " | " | |
| 1,2,4-Trichlorobenzene | ND | 0.200 | " | " | " | " | " | " | |
| 1,2,4-Trimethylbenzene | ND | 0.200 | " | " | " | " | " | " | |
| 1,2-Dibromo-3-chloropropane | ND | 0.500 | " | " | " | " | " | " | |
| 1,2-Dibromoethane | ND | 0.200 | " | " | " | " | " | " | |
| 1,2-Dichlorobenzene | ND | 0.200 | " | " | " | " | " | " | |
| 1,2-Dichloroethane | ND | 0.200 | " | " | " | " | " | " | |
| 1,2-Dichloropropane | ND | 0.200 | " | " | " | " | " | " | |
| 1,3,5-Trimethylbenzene | ND | 0.500 | " | " | " | " | " | " | |
| 1,3-Dichlorobenzene | ND | 0.200 | " | " | " | " | " | " | |
| 1,3-Dichloropropane | ND | 0.200 | " | " | " | " | " | " | |
| 1,4-Dichlorobenzene | ND | 0.200 | " | " | " | " | " | " | |
| 2,2-Dichloropropane | ND | 0.500 | " | " | " | " | " | " | |
| 2-Butanone | ND | 2.00 | " | " | " | " | " | " | |
| 2-Chlorotoluene | ND | 0.500 | " | " | " | " | " | " | |
| 2-Hexanone | ND | 2.00 | " | " | " | " | " | " | |
| 4-Chlorotoluene | ND | 0.500 | " | " | " | " | " | " | |
| 4-Methyl-2-pentanone | ND | 2.00 | " | " | " | " | " | " | |
| Acetone | ND | 10.0 | " | " | " | " | " | " | |
| Benzene | ND | 0.200 | " | " | " | " | " | " | |
| Bromobenzene | ND | 0.500 | " | " | " | " | " | " | |
| Bromochloromethane | ND | 0.200 | " | " | " | " | " | " | |
| Bromodichloromethane | ND | 0.200 | " | " | " | " | " | " | |
| Bromoform | ND | 0.200 | " | " | " | " | " | " | |
| Bromomethane | ND | 2.00 | " | " | " | " | " | " | |
| Carbon disulfide | ND | 0.500 | " | " | " | " | " | " | |
| Carbon tetrachloride | ND | 0.200 | " | " | " | " | " | " | |
| Chlorobenzene | ND | 0.200 | " | " | " | " | " | " | |
| Chloroethane | ND | 1.00 | " | " | " | " | " | " | |
| Chloroform | ND | 0.200 | " | " | " | " | " | " | |

North Creek Analytical - Bothell

The results in this report apply to the samples analyzed in accordance with the chain of custody document. This analytical report must be reproduced in its entirety.

Kortland Orr, PM

North Creek Analytical, Inc.
 Environmental Laboratory Network



Seattle 11720 North Creek Pkwy N, Suite 400, Bothell, WA 98011-8244
 425.420.9200 fax 425.420.9210
 Spokane East 11115 Montgomery, Suite B, Spokane, WA 99206-4776
 509.924.9200 fax 509.924.9290
 Portland 9405 SW Nimbus Avenue, Beaverton, OR 97008-7132
 503.906.9200 fax 503.906.9210
 Bend 20332 Empire Avenue, Suite F-1, Bend, OR 97701-5711
 541.383.9310 fax 541.382.7588
 Anchorage 2000 W International Airport Road, Suite A-10, Anchorage, AK 99502-1119
 907.563.9200 fax 907.563.9210

Geomatrix Consultants, Inc. - Seattle
 600 University Street, Suite 1020
 Seattle, WA 98101

Project: Anacortes A Avenue
 Project Number: 9156
 Project Manager: Kathleen Goodman

Reported:
 01/08/04 18:28

Volatile Organic Compounds by EPA Method 8260B
North Creek Analytical - Bothell

| Analyte | Result | Reporting Limit | Units | Dilution | Batch | Prepared | Analyzed | Method | Notes |
|--|--------|-----------------|-------|----------|---------|----------|----------|-----------|-------|
| Seep-2-121803 (B3L0652-07) Water Sampled: 12/18/03 13:19 Received: 12/18/03 15:44 | | | | | | | | | |
| Chloromethane | ND | 1.00 | ug/l | 1 | 3L23013 | 12/22/03 | 12/22/03 | EPA 8260B | |
| cis-1,2-Dichloroethene | ND | 0.200 | " | " | " | " | " | " | |
| cis-1,3-Dichloropropene | ND | 0.200 | " | " | " | " | " | " | |
| Dibromochloromethane | ND | 0.200 | " | " | " | " | " | " | |
| Dibromomethane | ND | 0.200 | " | " | " | " | " | " | |
| Dichlorodifluoromethane | ND | 0.500 | " | " | " | " | " | " | |
| Ethylbenzene | ND | 0.200 | " | " | " | " | " | " | |
| Hexachlorobutadiene | ND | 0.500 | " | " | " | " | " | " | |
| Isopropylbenzene | ND | 0.500 | " | " | " | " | " | " | |
| m,p-Xylene | ND | 0.500 | " | " | " | " | " | " | |
| Methyl tert-butyl ether | ND | 1.00 | " | " | " | " | " | " | |
| Methylene chloride | ND | 5.00 | " | " | " | " | " | " | |
| n-Butylbenzene | ND | 0.200 | " | " | " | " | " | " | |
| n-Propylbenzene | ND | 0.500 | " | " | " | " | " | " | |
| Naphthalene | ND | 0.500 | " | " | " | " | " | " | |
| o-Xylene | ND | 0.250 | " | " | " | " | " | " | |
| p-Isopropyltoluene | 0.270 | 0.200 | " | " | " | " | " | " | |
| sec-Butylbenzene | ND | 0.200 | " | " | " | " | " | " | |
| Styrene | ND | 0.500 | " | " | " | " | " | " | |
| tert-Butylbenzene | ND | 0.500 | " | " | " | " | " | " | |
| Tetrachloroethene | ND | 0.200 | " | " | " | " | " | " | |
| Toluene | ND | 0.200 | " | " | " | " | " | " | |
| trans-1,2-Dichloroethene | ND | 0.200 | " | " | " | " | " | " | |
| trans-1,3-Dichloropropene | ND | 0.200 | " | " | " | " | " | " | |
| Trichloroethene | ND | 0.200 | " | " | " | " | " | " | |
| Trichlorofluoromethane | ND | 0.500 | " | " | " | " | " | " | |
| Vinyl chloride | ND | 0.200 | " | " | " | " | " | " | |
| Surrogate: 1,2-DCA-d4 | 103 % | 70-130 | | | " | " | " | " | |
| Surrogate: Toluene-d8 | 95.0 % | 70-130 | | | " | " | " | " | |
| Surrogate: 4-BFB | 103 % | 70-130 | | | " | " | " | " | |

North Creek Analytical - Bothell

The results in this report apply to the samples analyzed in accordance with the chain of custody document. This analytical report must be reproduced in its entirety.

Kortland Orr, PM

North Creek Analytical, Inc.
 Environmental Laboratory Network



Seattle 11720 North Creek Pkwy N, Suite 400, Bothell, WA 98011-8244
 425.420.9200 fax 425.420.9210
 Spokane East 11115 Montgomery, Suite B, Spokane, WA 99206-4776
 509.924.9200 fax 509.924.9290
 Portland 9405 SW Nimbus Avenue, Beaverton, OR 97008-7132
 503.906.9200 fax 503.906.9210
 Bend 20332 Empire Avenue, Suite F-1, Bend, OR 97701-5711
 541.383.9310 fax 541.382.7588
 Anchorage 2000 W International Airport Road, Suite A-10, Anchorage, AK 99502-1119
 907.563.9200 fax 907.563.9210

Geomatrix Consultants, Inc. - Seattle
 600 University Street, Suite 1020
 Seattle, WA 98101

Project: Anacortes A Avenue
 Project Number: 9156
 Project Manager: Kathleen Goodman

Reported:
 01/08/04 18:28

Volatile Organic Compounds by EPA Method 8260B
North Creek Analytical - Bothell

| Analyte | Result | Reporting Limit | Units | Dilution | Batch | Prepared | Analyzed | Method | Notes |
|--|--------|-----------------|-------|----------|---------|----------|----------|-----------|-------|
| Seep-11-121803 (B3L0652-08) Water Sampled: 12/18/03 12:41 Received: 12/18/03 15:44 | | | | | | | | | |
| 1,1,1,2-Tetrachloroethane | ND | 0.200 | ug/l | 1 | 3L23013 | 12/22/03 | 12/22/03 | EPA 8260B | |
| 1,1,1-Trichloroethane | ND | 0.200 | " | " | " | " | " | " | " |
| 1,1,2,2-Tetrachloroethane | ND | 0.500 | " | " | " | " | " | " | " |
| 1,1,2-Trichloroethane | ND | 0.200 | " | " | " | " | " | " | " |
| 1,1-Dichloroethane | ND | 0.200 | " | " | " | " | " | " | " |
| 1,1-Dichloroethene | ND | 0.200 | " | " | " | " | " | " | " |
| 1,1-Dichloropropene | ND | 0.200 | " | " | " | " | " | " | " |
| 1,2,3-Trichlorobenzene | ND | 0.200 | " | " | " | " | " | " | " |
| 1,2,3-Trichloropropane | ND | 0.500 | " | " | " | " | " | " | " |
| 1,2,4-Trichlorobenzene | ND | 0.200 | " | " | " | " | " | " | " |
| 1,2,4-Trimethylbenzene | ND | 0.200 | " | " | " | " | " | " | " |
| 1,2-Dibromo-3-chloropropane | ND | 0.500 | " | " | " | " | " | " | " |
| 1,2-Dibromoethane | ND | 0.200 | " | " | " | " | " | " | " |
| 1,2-Dichlorobenzene | ND | 0.200 | " | " | " | " | " | " | " |
| 1,2-Dichloroethane | ND | 0.200 | " | " | " | " | " | " | " |
| 1,2-Dichloropropane | ND | 0.200 | " | " | " | " | " | " | " |
| 1,3,5-Trimethylbenzene | ND | 0.500 | " | " | " | " | " | " | " |
| 1,3-Dichlorobenzene | ND | 0.200 | " | " | " | " | " | " | " |
| 1,3-Dichloropropane | ND | 0.200 | " | " | " | " | " | " | " |
| 1,4-Dichlorobenzene | ND | 0.200 | " | " | " | " | " | " | " |
| 2,2-Dichloropropane | ND | 0.500 | " | " | " | " | " | " | " |
| 2-Butanone | ND | 2.00 | " | " | " | " | " | " | " |
| 2-Chlorotoluene | ND | 0.500 | " | " | " | " | " | " | " |
| 2-Hexanone | ND | 2.00 | " | " | " | " | " | " | " |
| 4-Chlorotoluene | ND | 0.500 | " | " | " | " | " | " | " |
| 4-Methyl-2-pentanone | ND | 2.00 | " | " | " | " | " | " | " |
| Acetone | ND | 10.0 | " | " | " | " | " | " | " |
| Benzene | ND | 0.200 | " | " | " | " | " | " | " |
| Bromobenzene | ND | 0.500 | " | " | " | " | " | " | " |
| Bromochloromethane | ND | 0.200 | " | " | " | " | " | " | " |
| Bromodichloromethane | ND | 0.200 | " | " | " | " | " | " | " |
| Bromoform | ND | 0.200 | " | " | " | " | " | " | " |
| Bromomethane | ND | 2.00 | " | " | " | " | " | " | " |
| Carbon disulfide | ND | 0.500 | " | " | " | " | " | " | " |
| Carbon tetrachloride | ND | 0.200 | " | " | " | " | " | " | " |
| Chlorobenzene | ND | 0.200 | " | " | " | " | " | " | " |
| Chloroethane | ND | 1.00 | " | " | " | " | " | " | " |
| Chloroform | ND | 0.200 | " | " | " | " | " | " | " |

North Creek Analytical - Bothell

The results in this report apply to the samples analyzed in accordance with the chain of custody document. This analytical report must be reproduced in its entirety.

Kortland Orr, PM

North Creek Analytical, Inc.
 Environmental Laboratory Network



Seattle 11720 North Creek Pkwy N, Suite 400, Bothell, WA 98011-8244
 425.420.9200 fax 425.420.9210
 Spokane East 11115 Montgomery, Suite B, Spokane, WA 99206-4776
 509.924.9200 fax 509.924.9290
 Portland 9405 SW Nimbus Avenue, Beaverton, OR 97008-7132
 503.906.9200 fax 503.906.9210
 Bend 20332 Empire Avenue, Suite F-1, Bend, OR 97701-5711
 541.383.9310 fax 541.382.7588
 Anchorage 2000 W International Airport Road, Suite A-10, Anchorage, AK 99502-1119
 907.563.9200 fax 907.563.9210

Geomatrix Consultants, Inc. - Seattle
 600 University Street, Suite 1020
 Seattle, WA 98101

Project: Anacortes A Avenue
 Project Number: 9156
 Project Manager: Kathleen Goodman

Reported:
 01/08/04 18:28

Volatile Organic Compounds by EPA Method 8260B
North Creek Analytical - Bothell

| Analyte | Result | Reporting Limit | Units | Dilution | Batch | Prepared | Analyzed | Method | Notes |
|--|--------|-----------------|-------|----------|---------|----------|----------|-----------|-------|
| Seep-11-121803 (B3L0652-08) Water Sampled: 12/18/03 12:41 Received: 12/18/03 15:44 | | | | | | | | | |
| Chloromethane | ND | 1.00 | ug/l | 1 | 3L23013 | 12/22/03 | 12/22/03 | EPA 8260B | |
| cis-1,2-Dichloroethene | ND | 0.200 | " | " | " | " | " | " | |
| cis-1,3-Dichloropropene | ND | 0.200 | " | " | " | " | " | " | |
| Dibromochloromethane | ND | 0.200 | " | " | " | " | " | " | |
| Dibromomethane | ND | 0.200 | " | " | " | " | " | " | |
| Dichlorodifluoromethane | ND | 0.500 | " | " | " | " | " | " | |
| Ethylbenzene | ND | 0.200 | " | " | " | " | " | " | |
| Hexachlorobutadiene | ND | 0.500 | " | " | " | " | " | " | |
| Isopropylbenzene | ND | 0.500 | " | " | " | " | " | " | |
| m,p-Xylene | ND | 0.500 | " | " | " | " | " | " | |
| Methyl tert-butyl ether | ND | 1.00 | " | " | " | " | " | " | |
| Methylene chloride | ND | 5.00 | " | " | " | " | " | " | |
| n-Butylbenzene | ND | 0.200 | " | " | " | " | " | " | |
| n-Propylbenzene | ND | 0.500 | " | " | " | " | " | " | |
| Naphthalene | ND | 0.500 | " | " | " | " | " | " | |
| o-Xylene | ND | 0.250 | " | " | " | " | " | " | |
| p-Isopropyltoluene | ND | 0.200 | " | " | " | " | " | " | |
| sec-Butylbenzene | ND | 0.200 | " | " | " | " | " | " | |
| Styrene | ND | 0.500 | " | " | " | " | " | " | |
| tert-Butylbenzene | ND | 0.500 | " | " | " | " | " | " | |
| Tetrachloroethene | ND | 0.200 | " | " | " | " | " | " | |
| Toluene | ND | 0.200 | " | " | " | " | " | " | |
| trans-1,2-Dichloroethene | ND | 0.200 | " | " | " | " | " | " | |
| trans-1,3-Dichloropropene | ND | 0.200 | " | " | " | " | " | " | |
| Trichloroethene | ND | 0.200 | " | " | " | " | " | " | |
| Trichlorofluoromethane | ND | 0.500 | " | " | " | " | " | " | |
| Vinyl chloride | ND | 0.200 | " | " | " | " | " | " | |
| Surrogate: 1,2-DCA-d4 | 100 % | 70-130 | | | " | " | " | " | |
| Surrogate: Toluene-d8 | 97.0 % | 70-130 | | | " | " | " | " | |
| Surrogate: 4-BFB | 106 % | 70-130 | | | " | " | " | " | |

North Creek Analytical - Bothell

The results in this report apply to the samples analyzed in accordance with the chain of custody document. This analytical report must be reproduced in its entirety.

Kortland Orr, PM



Seattle 11720 North Creek Pkwy N, Suite 400, Bothell, WA 98011-8244
 425.420.9200 fax 425.420.9210
 Spokane East 11115 Montgomery, Suite B, Spokane, WA 99206-4776
 509.924.9200 fax 509.924.9290
 Portland 9405 SW Nimbus Avenue, Beaverton, OR 97008-7132
 503.906.9200 fax 503.906.9210
 Bend 20332 Empire Avenue, Suite F-1, Bend, OR 97701-5711
 541.383.9310 fax 541.382.7588
 Anchorage 2000 W International Airport Road, Suite A-10, Anchorage, AK 99502-1119
 907.563.9200 fax 907.563.9210

Geomatrix Consultants, Inc. - Seattle
 600 University Street, Suite 1020
 Seattle, WA 98101

Project: Anacortes A Avenue
 Project Number: 9156
 Project Manager: Kathleen Goodman

Reported:
 01/08/04 18:28

Volatile Organic Compounds by EPA Method 8260B
North Creek Analytical - Bothell

| Analyte | Result | Reporting Limit | Units | Dilution | Batch | Prepared | Analyzed | Method | Notes |
|---|--------|-----------------|-------|----------|---------|----------|----------|-----------|-------|
| Trip Blank (B3L0652-09) Water Sampled: 12/18/03 12:00 Received: 12/18/03 15:44 | | | | | | | | | |
| 1,1,1,2-Tetrachloroethane | ND | 0.200 | ug/l | 1 | 3L23013 | 12/22/03 | 12/22/03 | EPA 8260B | |
| 1,1,1-Trichloroethane | ND | 0.200 | " | " | " | " | " | " | |
| 1,1,2,2-Tetrachloroethane | ND | 0.500 | " | " | " | " | " | " | |
| 1,1,2-Trichloroethane | ND | 0.200 | " | " | " | " | " | " | |
| 1,1-Dichloroethane | ND | 0.200 | " | " | " | " | " | " | |
| 1,1-Dichloroethene | ND | 0.200 | " | " | " | " | " | " | |
| 1,1-Dichloropropene | ND | 0.200 | " | " | " | " | " | " | |
| 1,2,3-Trichlorobenzene | ND | 0.200 | " | " | " | " | " | " | |
| 1,2,3-Trichloropropane | ND | 0.500 | " | " | " | " | " | " | |
| 1,2,4-Trichlorobenzene | ND | 0.200 | " | " | " | " | " | " | |
| 1,2,4-Trimethylbenzene | ND | 0.200 | " | " | " | " | " | " | |
| 1,2-Dibromo-3-chloropropane | ND | 0.500 | " | " | " | " | " | " | |
| 1,2-Dibromoethane | ND | 0.200 | " | " | " | " | " | " | |
| 1,2-Dichlorobenzene | ND | 0.200 | " | " | " | " | " | " | |
| 1,2-Dichloroethane | ND | 0.200 | " | " | " | " | " | " | |
| 1,2-Dichloropropane | ND | 0.200 | " | " | " | " | " | " | |
| 1,3,5-Trimethylbenzene | ND | 0.500 | " | " | " | " | " | " | |
| 1,3-Dichlorobenzene | ND | 0.200 | " | " | " | " | " | " | |
| 1,3-Dichloropropane | ND | 0.200 | " | " | " | " | " | " | |
| 1,4-Dichlorobenzene | ND | 0.200 | " | " | " | " | " | " | |
| 2,2-Dichloropropane | ND | 0.500 | " | " | " | " | " | " | |
| 2-Butanone | ND | 2.00 | " | " | " | " | " | " | |
| 2-Chlorotoluene | ND | 0.500 | " | " | " | " | " | " | |
| 2-Hexanone | ND | 2.00 | " | " | " | " | " | " | |
| 4-Chlorotoluene | ND | 0.500 | " | " | " | " | " | " | |
| 4-Methyl-2-pentanone | ND | 2.00 | " | " | " | " | " | " | |
| Acetone | ND | 10.0 | " | " | " | " | " | " | |
| Benzene | ND | 0.200 | " | " | " | " | " | " | |
| Bromobenzene | ND | 0.500 | " | " | " | " | " | " | |
| Bromochloromethane | ND | 0.200 | " | " | " | " | " | " | |
| Bromodichloromethane | ND | 0.200 | " | " | " | " | " | " | |
| Bromoform | ND | 0.200 | " | " | " | " | " | " | |
| Bromomethane | ND | 2.00 | " | " | " | " | " | " | |
| Carbon disulfide | ND | 0.500 | " | " | " | " | " | " | |
| Carbon tetrachloride | ND | 0.200 | " | " | " | " | " | " | |
| Chlorobenzene | ND | 0.200 | " | " | " | " | " | " | |
| Chloroethane | ND | 1.00 | " | " | " | " | " | " | |
| Chloroform | ND | 0.200 | " | " | " | " | " | " | |

North Creek Analytical - Bothell

The results in this report apply to the samples analyzed in accordance with the chain of custody document. This analytical report must be reproduced in its entirety.

Kortland Orr, PM



Seattle 11720 North Creek Pkwy N, Suite 400, Bothell, WA 98011-8244
 425.420.9200 fax 425.420.9210
 Spokane East 11115 Montgomery, Suite B, Spokane, WA 99206-4776
 509.924.9200 fax 509.924.9290
 Portland 9405 SW Nimbus Avenue, Beaverton, OR 97008-7132
 503.906.9200 fax 503.906.9210
 Bend 20332 Empire Avenue, Suite F-1, Bend, OR 97701-5711
 541.383.9310 fax 541.382.7588
 Anchorage 2000 W International Airport Road, Suite A-10, Anchorage, AK 99502-1119
 907.563.9200 fax 907.563.9210

Geomatrix Consultants, Inc. - Seattle
 600 University Street, Suite 1020
 Seattle, WA 98101

Project: Anacortes A Avenue
 Project Number: 9156
 Project Manager: Kathleen Goodman

Reported:
 01/08/04 18:28

Volatile Organic Compounds by EPA Method 8260B
North Creek Analytical - Bothell

| Analyte | Reporting | | Units | Dilution | Batch | Prepared | Analyzed | Method | Notes |
|---|-----------|--------|-------|----------|---------|----------|----------|-----------|-------|
| | Result | Limit | | | | | | | |
| Trip Blank (B3L0652-09) Water Sampled: 12/18/03 12:00 Received: 12/18/03 15:44 | | | | | | | | | |
| Chloromethane | ND | 1.00 | ug/l | 1 | 3L23013 | 12/22/03 | 12/22/03 | EPA 8260B | |
| cis-1,2-Dichloroethene | ND | 0.200 | " | " | " | " | " | " | |
| cis-1,3-Dichloropropene | ND | 0.200 | " | " | " | " | " | " | |
| Dibromochloromethane | ND | 0.200 | " | " | " | " | " | " | |
| Dibromomethane | ND | 0.200 | " | " | " | " | " | " | |
| Dichlorodifluoromethane | ND | 0.500 | " | " | " | " | " | " | |
| Ethylbenzene | ND | 0.200 | " | " | " | " | " | " | |
| Hexachlorobutadiene | ND | 0.500 | " | " | " | " | " | " | |
| Isopropylbenzene | ND | 0.500 | " | " | " | " | " | " | |
| m,p-Xylene | ND | 0.500 | " | " | " | " | " | " | |
| Methyl tert-butyl ether | ND | 1.00 | " | " | " | " | " | " | |
| Methylene chloride | ND | 5.00 | " | " | " | " | " | " | |
| n-Butylbenzene | ND | 0.200 | " | " | " | " | " | " | |
| n-Propylbenzene | ND | 0.500 | " | " | " | " | " | " | |
| Naphthalene | ND | 0.500 | " | " | " | " | " | " | |
| o-Xylene | ND | 0.250 | " | " | " | " | " | " | |
| p-Isopropyltoluene | ND | 0.200 | " | " | " | " | " | " | |
| sec-Butylbenzene | ND | 0.200 | " | " | " | " | " | " | |
| Styrene | ND | 0.500 | " | " | " | " | " | " | |
| tert-Butylbenzene | ND | 0.500 | " | " | " | " | " | " | |
| Tetrachloroethene | ND | 0.200 | " | " | " | " | " | " | |
| Toluene | ND | 0.200 | " | " | " | " | " | " | |
| trans-1,2-Dichloroethene | ND | 0.200 | " | " | " | " | " | " | |
| trans-1,3-Dichloropropene | ND | 0.200 | " | " | " | " | " | " | |
| Trichloroethene | ND | 0.200 | " | " | " | " | " | " | |
| Trichlorofluoromethane | ND | 0.500 | " | " | " | " | " | " | |
| Vinyl chloride | ND | 0.200 | " | " | " | " | " | " | |
| Surrogate: 1,2-DCA-d4 | 102 % | 70-130 | | | " | " | " | " | |
| Surrogate: Toluene-d8 | 94.0 % | 70-130 | | | " | " | " | " | |
| Surrogate: 4-BFB | 106 % | 70-130 | | | " | " | " | " | |

North Creek Analytical - Bothell

The results in this report apply to the samples analyzed in accordance with the chain of custody document. This analytical report must be reproduced in its entirety.

Kortland Orr, PM



Seattle 11720 North Creek Parkway N, Suite 400, Bothell, WA 98011-8244
 425.420.9200 fax 425.420.9210
 Spokane East 11115 Montgomery, Suite B, Spokane, WA 99206-4776
 509.924.9200 fax 509.924.9290
 Portland 9405 SW Nimbus Avenue, Beaverton, OR 97008-7132
 503.906.9200 fax 503.906.9210
 Bend 20332 Empr Avenue, Suite F-1, Bend, OR 97701-5711
 541.383.9310 fax 541.382.7588
 Anchorage 2000 W International Airport Road, Suite A-10, Anchorage, AK 99502-1119
 907.563.9200 fax 907.563.9210

Geomatrix Consultants, Inc. - Seattle
 600 University Street, Suite 1020
 Seattle, WA 98101

Project: Anacortes A Avenue
 Project Number: 9156
 Project Manager: Kathleen Goodman

Reported:
 01/08/04 18:28

Semivolatile Organic Compounds by EPA Method 8270C
North Creek Analytical - Bothell

| Analyte | Result | Reporting Limit | Units | Dilution | Batch | Prepared | Analyzed | Method | Notes |
|--|--------|-----------------|-----------|----------|---------|----------|----------|-----------|-------|
| S-1-121803 (B3L0652-01) Soil Sampled: 12/18/03 10:07 Received: 12/18/03 15:44 | | | | | | | | | |
| 1,2,4-Trichlorobenzene | ND | 0.330 | mg/kg dry | 1 | 3L19015 | 12/19/03 | 01/06/04 | EPA 8270C | |
| 1,2-Dichlorobenzene | ND | 0.330 | " | " | " | " | " | " | |
| 1,3-Dichlorobenzene | ND | 0.330 | " | " | " | " | " | " | |
| 1,4-Dichlorobenzene | ND | 0.330 | " | " | " | " | " | " | |
| 2,4,5-Trichlorophenol | ND | 0.330 | " | " | " | " | " | " | |
| 2,4,6-Trichlorophenol | ND | 0.330 | " | " | " | " | " | " | |
| 2,4-Dichlorophenol | ND | 0.330 | " | " | " | " | " | " | |
| 2,4-Dimethylphenol | ND | 0.330 | " | " | " | " | " | " | |
| 2,4-Dinitrophenol | ND | 0.500 | " | " | " | " | " | " | |
| 2,4-Dinitrotoluene | ND | 0.500 | " | " | " | " | " | " | |
| 2,6-Dinitrotoluene | ND | 0.500 | " | " | " | " | " | " | |
| 2-Chloronaphthalene | ND | 0.330 | " | " | " | " | " | " | |
| 2-Chlorophenol | ND | 0.330 | " | " | " | " | " | " | |
| 2-Methylnaphthalene | ND | 0.330 | " | " | " | " | " | " | |
| 2-Methylphenol | ND | 0.330 | " | " | " | " | " | " | |
| 2-Nitroaniline | ND | 0.500 | " | " | " | " | " | " | |
| 2-Nitrophenol | ND | 0.330 | " | " | " | " | " | " | |
| 3 & 4-Methylphenol | ND | 0.330 | " | " | " | " | " | " | |
| 3,3'-Dichlorobenzidine | ND | 5.00 | " | " | " | " | " | " | |
| 3-Nitroaniline | ND | 0.500 | " | " | " | " | " | " | |
| 4,6-Dinitro-2-methylphenol | ND | 0.500 | " | " | " | " | " | " | |
| 4-Bromophenyl phenyl ether | ND | 0.330 | " | " | " | " | " | " | |
| 4-Chloro-3-methylphenol | ND | 0.330 | " | " | " | " | " | " | |
| 4-Chloroaniline | ND | 0.500 | " | " | " | " | " | " | |
| 4-Chlorophenyl phenyl ether | ND | 0.330 | " | " | " | " | " | " | |
| 4-Nitroaniline | ND | 0.500 | " | " | " | " | " | " | |
| 4-Nitrophenol | ND | 0.500 | " | " | " | " | " | " | |
| Acenaphthene | ND | 0.330 | " | " | " | " | " | " | |
| Acenaphthylene | ND | 0.330 | " | " | " | " | " | " | |
| Aniline | ND | 0.330 | " | " | " | " | " | " | |
| Anthracene | ND | 0.330 | " | " | " | " | " | " | |
| Benzo (a) anthracene | ND | 0.330 | " | " | " | " | " | " | |
| Benzo (a) pyrene | ND | 0.330 | " | " | " | " | " | " | |
| Benzo (b) fluoranthene | ND | 0.330 | " | " | " | " | " | " | |
| Benzo (ghi) perylene | ND | 0.330 | " | " | " | " | " | " | |
| Benzo (k) fluoranthene | ND | 0.330 | " | " | " | " | " | " | |
| Benzoic Acid | ND | 1.00 | " | " | " | " | " | " | |
| Benzyl alcohol | ND | 0.330 | " | " | " | " | " | " | |

North Creek Analytical - Bothell

The results in this report apply to the samples analyzed in accordance with the chain of custody document. This analytical report must be reproduced in its entirety.

Kortland Orr
 Kortland Orr, PM



Seattle 11720 North Creek Pkwy II, Suite 400, Bothell, WA 98011-8244
 425.420.9200 fax 425.420.9210
 Spokane East 11115 Montgomery, Suite B, Spokane, WA 99206-4776
 509.924.9200 fax 509.924.9290
 Portland 9405 SW Nimbus Avenue, Beaverton, OR 97008-7132
 503.906.9200 fax 503.906.9210
 Bend 20332 Empire Avenue, Suite F-1, Bend, OR 97701-5711
 541.383.9310 fax 541.382.7588
 Anchorage 2000 W International Airport Road, Suite A-10, Anchorage, AK 99502-1119
 907.563.9200 fax 907.563.9210

Geomatrix Consultants, Inc. - Seattle
 600 University Street, Suite 1020
 Seattle, WA 98101

Project: Anacortes A Avenue
 Project Number: 9156
 Project Manager: Kathleen Goodman

Reported:
 01/08/04 18:28

Semivolatile Organic Compounds by EPA Method 8270C
North Creek Analytical - Bothell

| Analyte | Result | Reporting Limit | Units | Dilution | Batch | Prepared | Analyzed | Method | Notes |
|--|--------|-----------------|-----------|----------|---------|----------|----------|-----------|-------|
| S-1-121803 (B3L0652-01) Soil Sampled: 12/18/03 10:07 Received: 12/18/03 15:44 | | | | | | | | | |
| Bis(2-chloroethoxy)methane | ND | 0.330 | mg/kg dry | 1 | 3L19015 | 12/19/03 | 01/06/04 | EPA 8270C | |
| Bis(2-chloroethyl)ether | ND | 0.330 | " | " | " | " | " | " | |
| Bis(2-chloroisopropyl)ether | ND | 0.330 | " | " | " | " | " | " | |
| Bis(2-ethylhexyl)phthalate | ND | 0.330 | " | " | " | " | " | " | |
| Butyl benzyl phthalate | ND | 0.330 | " | " | " | " | " | " | |
| Carbazole | ND | 0.330 | " | " | " | " | " | " | |
| Chrysene | ND | 0.330 | " | " | " | " | " | " | |
| Di-n-butyl phthalate | ND | 0.330 | " | " | " | " | " | " | |
| Di-n-octyl phthalate | ND | 0.330 | " | " | " | " | " | " | |
| Dibenz (a,h) anthracene | ND | 0.330 | " | " | " | " | " | " | |
| Dibenzofuran | ND | 0.330 | " | " | " | " | " | " | |
| Diethyl phthalate | ND | 0.330 | " | " | " | " | " | " | |
| Dimethyl phthalate | ND | 0.330 | " | " | " | " | " | " | |
| Fluoranthene | ND | 0.330 | " | " | " | " | " | " | |
| Fluorene | ND | 0.330 | " | " | " | " | " | " | |
| Hexachlorobenzene | ND | 0.330 | " | " | " | " | " | " | |
| Hexachlorobutadiene | ND | 0.330 | " | " | " | " | " | " | |
| Hexachlorocyclopentadiene | ND | 0.500 | " | " | " | " | " | " | |
| Hexachloroethane | ND | 0.330 | " | " | " | " | " | " | |
| Indeno (1,2,3-cd) pyrene | ND | 0.330 | " | " | " | " | " | " | |
| Isophorone | ND | 0.330 | " | " | " | " | " | " | |
| N-Nitrosodi-n-propylamine | ND | 0.330 | " | " | " | " | " | " | |
| N-Nitrosodiphenylamine | ND | 0.330 | " | " | " | " | " | " | |
| Naphthalene | ND | 0.330 | " | " | " | " | " | " | |
| Nitrobenzene | ND | 0.330 | " | " | " | " | " | " | |
| Pentachlorophenol | ND | 0.500 | " | " | " | " | " | " | |
| Phenanthrene | ND | 0.330 | " | " | " | " | " | " | |
| Phenol | ND | 0.330 | " | " | " | " | " | " | |
| Pyrene | ND | 0.330 | " | " | " | " | " | " | |
| Surrogate: 2-FP | 65.6 % | 26-137 | | | " | " | " | " | |
| Surrogate: Phenol-d6 | 73.4 % | 10-153 | | | " | " | " | " | |
| Surrogate: 2,4,6-TBP | 45.0 % | 10-133 | | | " | " | " | " | |
| Surrogate: Nitrobenzene-d5 | 75.0 % | 48-127 | | | " | " | " | " | |
| Surrogate: p-Terphenyl-d14 | 73.4 % | 44-144 | | | " | " | " | " | |
| Surrogate: 2-FBP | 69.3 % | 36-146 | | | " | " | " | " | |

North Creek Analytical - Bothell

The results in this report apply to the samples analyzed in accordance with the chain of custody document. This analytical report must be reproduced in its entirety.

Kortland Orr, PM

North Creek Analytical, Inc.
 Environmental Laboratory Network



Seattle 11720 North Creek Pkwy N, Suite 400, Bothell, WA 98011-8244
 425.420.9200 fax 425.420.9210
 Spokane East 11115 Montgomery, Suite B, Spokane, WA 99206-4776
 509.924.9200 fax 509.924.9290
 Portland 9405 SW Nimbus Avenue, Beaverton, OR 97008-7132
 503.906.9200 fax 503.906.9210
 Bend 20332 Empire Avenue, Suite F-1, Bend, OR 97701-5711
 541.383.9310 fax 541.382.7588
 Anchorage 2000 W International Airport Road, Suite A-10, Anchorage, AK 99502-1119
 907.563.9200 fax 907.563.9210

Geomatrix Consultants, Inc. - Seattle
 600 University Street, Suite 1020
 Seattle, WA 98101

Project: Anacortes A Avenue
 Project Number: 9156
 Project Manager: Kathleen Goodman

Reported:
 01/08/04 18:28

Semivolatile Organic Compounds by EPA Method 8270C
North Creek Analytical - Bothell

| Analyte | Result | Reporting Limit | Units | Dilution | Batch | Prepared | Analyzed | Method | Notes |
|---|--------|-----------------|-----------|----------|---------|----------|----------|-----------|-------|
| S-2-121803 (B3L0652-02) Soil Sampled: 12/18/03 10:38 Received: 12/18/03 15:44 | | | | | | | | | |
| 1,2,4-Trichlorobenzene | ND | 3.30 | mg/kg dry | 10 | 3L19015 | 12/19/03 | 01/02/04 | EPA 8270C | |
| 1,2-Dichlorobenzene | ND | 3.30 | " | " | " | " | " | " | |
| 1,3-Dichlorobenzene | ND | 3.30 | " | " | " | " | " | " | |
| 1,4-Dichlorobenzene | ND | 3.30 | " | " | " | " | " | " | |
| 2,4,5-Trichlorophenol | ND | 3.30 | " | " | " | " | " | " | |
| 2,4,6-Trichlorophenol | ND | 3.30 | " | " | " | " | " | " | |
| 2,4-Dichlorophenol | ND | 3.30 | " | " | " | " | " | " | |
| 2,4-Dimethylphenol | ND | 3.30 | " | " | " | " | " | " | |
| 2,4-Dinitrophenol | ND | 5.00 | " | " | " | " | " | " | |
| 2,4-Dinitrotoluene | ND | 5.00 | " | " | " | " | " | " | |
| 2,6-Dinitrotoluene | ND | 5.00 | " | " | " | " | " | " | |
| 2-Chloronaphthalene | ND | 3.30 | " | " | " | " | " | " | |
| 2-Chlorophenol | ND | 3.30 | " | " | " | " | " | " | |
| 2-Methylnaphthalene | ND | 3.30 | " | " | " | " | " | " | |
| 2-Methylphenol | ND | 3.30 | " | " | " | " | " | " | |
| 2-Nitroaniline | ND | 5.00 | " | " | " | " | " | " | |
| 2-Nitrophenol | ND | 3.30 | " | " | " | " | " | " | |
| 3 & 4-Methylphenol | ND | 3.30 | " | " | " | " | " | " | |
| 3,3'-Dichlorobenzidine | ND | 50.0 | " | " | " | " | " | " | |
| 3-Nitroaniline | ND | 5.00 | " | " | " | " | " | " | |
| 4,6-Dinitro-2-methylphenol | ND | 5.00 | " | " | " | " | " | " | |
| 4-Bromophenyl phenyl ether | ND | 3.30 | " | " | " | " | " | " | |
| 4-Chloro-3-methylphenol | ND | 3.30 | " | " | " | " | " | " | |
| 4-Chloroaniline | ND | 5.00 | " | " | " | " | " | " | |
| 4-Chlorophenyl phenyl ether | ND | 3.30 | " | " | " | " | " | " | |
| 4-Nitroaniline | ND | 5.00 | " | " | " | " | " | " | |
| 4-Nitrophenol | ND | 5.00 | " | " | " | " | " | " | |
| Acenaphthene | ND | 3.30 | " | " | " | " | " | " | |
| Acenaphthylene | ND | 3.30 | " | " | " | " | " | " | |
| Aniline | ND | 3.30 | " | " | " | " | " | " | |
| Anthracene | ND | 3.30 | " | " | " | " | " | " | |
| Benzo (a) anthracene | ND | 3.30 | " | " | " | " | " | " | |
| Benzo (a) pyrene | ND | 3.30 | " | " | " | " | " | " | |
| Benzo (b) fluoranthene | ND | 3.30 | " | " | " | " | " | " | |
| Benzo (ghi) perylene | ND | 3.30 | " | " | " | " | " | " | |
| Benzo (k) fluoranthene | ND | 3.30 | " | " | " | " | " | " | |
| Benzoic Acid | ND | 10.0 | " | " | " | " | " | " | |
| Benzyl alcohol | ND | 3.30 | " | " | " | " | " | " | |

North Creek Analytical - Bothell

The results in this report apply to the samples analyzed in accordance with the chain of custody document. This analytical report must be reproduced in its entirety.

Kortland Orr, PM



Seattle 11720 North Creek Pkwy N, Suite 400, Bothell, WA 98011-8244
 425.420.9200 fax 425.420.9210
 Spokane East 11115 Montgomery, Suite B, Spokane, WA 99206-4776
 509.924.9200 fax 509.924.9290
 Portland 9405 SW Nimbus Avenue, Beaverton, OR 97008-7132
 503.906.9200 fax 503.906.9210
 Bend 20332 Empire Avenue, Suite F-1, Bend, OR 97701-5711
 541.383.9310 fax 541.382.7588
 Anchorage 2000 W International Airport Road, Suite A-10, Anchorage, AK 99502-1119
 907.563.9200 fax 907.563.9210

Geomatrix Consultants, Inc. - Seattle
 600 University Street, Suite 1020
 Seattle, WA 98101

Project: Anacortes A Avenue
 Project Number: 9156
 Project Manager: Kathleen Goodman

Reported:
 01/08/04 18:28

Semivolatile Organic Compounds by EPA Method 8270C
North Creek Analytical - Bothell

| Analyte | Result | Reporting Limit | Units | Dilution | Batch | Prepared | Analyzed | Method | Notes |
|--|--------|-----------------|-----------|----------|---------|----------|----------|-----------|-------|
| S-2-121803 (B3L0652-02) Soil Sampled: 12/18/03 10:38 Received: 12/18/03 15:44 | | | | | | | | | |
| Bis(2-chloroethoxy)methane | ND | 3.30 | mg/kg dry | 10 | 3L19015 | 12/19/03 | 01/02/04 | EPA 8270C | |
| Bis(2-chloroethyl)ether | ND | 3.30 | " | " | " | " | " | " | |
| Bis(2-chloroisopropyl)ether | ND | 3.30 | " | " | " | " | " | " | |
| Bis(2-ethylhexyl)phthalate | ND | 3.30 | " | " | " | " | " | " | |
| Butyl benzyl phthalate | ND | 3.30 | " | " | " | " | " | " | |
| Carbazole | ND | 3.30 | " | " | " | " | " | " | |
| Chrysene | ND | 3.30 | " | " | " | " | " | " | |
| Di-n-butyl phthalate | ND | 3.30 | " | " | " | " | " | " | |
| Di-n-octyl phthalate | ND | 3.30 | " | " | " | " | " | " | |
| Dibenz (a,h) anthracene | ND | 3.30 | " | " | " | " | " | " | |
| Dibenzofuran | ND | 3.30 | " | " | " | " | " | " | |
| Diethyl phthalate | ND | 3.30 | " | " | " | " | " | " | |
| Dimethyl phthalate | ND | 3.30 | " | " | " | " | " | " | |
| Fluoranthene | ND | 3.30 | " | " | " | " | " | " | |
| Fluorene | ND | 3.30 | " | " | " | " | " | " | |
| Hexachlorobenzene | ND | 3.30 | " | " | " | " | " | " | |
| Hexachlorobutadiene | ND | 3.30 | " | " | " | " | " | " | |
| Hexachlorocyclopentadiene | ND | 5.00 | " | " | " | " | " | " | |
| Hexachloroethane | ND | 3.30 | " | " | " | " | " | " | |
| Indeno (1,2,3-cd) pyrene | ND | 3.30 | " | " | " | " | " | " | |
| Isophorone | ND | 3.30 | " | " | " | " | " | " | |
| N-Nitrosodi-n-propylamine | ND | 3.30 | " | " | " | " | " | " | |
| N-Nitrosodiphenylamine | ND | 3.30 | " | " | " | " | " | " | |
| Naphthalene | ND | 3.30 | " | " | " | " | " | " | |
| Nitrobenzene | ND | 3.30 | " | " | " | " | " | " | |
| Pentachlorophenol | ND | 5.00 | " | " | " | " | " | " | |
| Phenanthrene | ND | 3.30 | " | " | " | " | " | " | |
| Phenol | ND | 3.30 | " | " | " | " | " | " | |
| Pyrene | ND | 3.30 | " | " | " | " | " | " | |
| Surrogate: 2-FP | 57.3 % | 26-137 | | | " | " | " | " | |
| Surrogate: Phenol-d6 | 54.4 % | 10-153 | | | " | " | " | " | |
| Surrogate: 2,4,6-TBP | 38.7 % | 10-133 | | | " | " | " | " | |
| Surrogate: Nitrobenzene-d5 | 54.9 % | 48-127 | | | " | " | " | " | |
| Surrogate: p-Terphenyl-d14 | 69.4 % | 44-144 | | | " | " | " | " | |
| Surrogate: 2-FBP | 58.3 % | 36-146 | | | " | " | " | " | |

North Creek Analytical - Bothell

The results in this report apply to the samples analyzed in accordance with the chain of custody document. This analytical report must be reproduced in its entirety.

Kortland Orr, PM



Seattle 11720 North Creek Hwy N, Suite 400, Bothell, WA 98011-8244
 425.420.9200 fax 425.420.9210
 Spokane East 11115 Montgomery, Suite B, Spokane, WA 99206-4776
 509.924.9200 fax 509.924.9290
 Portland 9405 SW Nimbus Avenue, Beaverton, OR 97008-7132
 503.906.9200 fax 503.906.9210
 Bend 20332 Empire Avenue, Suite F-1, Bend, OR 97701-5711
 541.383.9310 fax 541.382.7588
 Anchorage 2000 W International Airport Road, Suite A-10, Anchorage, AK 99502-1119
 907.563.9200 fax 907.563.9210

Geomatrix Consultants, Inc. - Seattle
 600 University Street, Suite 1020
 Seattle, WA 98101

Project: Anacortes A Avenue
 Project Number: 9156
 Project Manager: Kathleen Goodman

Reported:
 01/08/04 18:28

Semivolatile Organic Compounds by EPA Method 8270C
North Creek Analytical - Bothell

| Analyte | Result | Reporting Limit | Units | Dilution | Batch | Prepared | Analyzed | Method | Notes |
|---|--------|-----------------|-----------|----------|---------|----------|----------|-----------|-------|
| S-3-121803 (B3L0652-03) Soil Sampled: 12/18/03 11:03 Received: 12/18/03 15:44 | | | | | | | | | |
| 1,2,4-Trichlorobenzene | ND | 3.30 | mg/kg dry | 10 | 3L19015 | 12/19/03 | 01/02/04 | EPA 8270C | |
| 1,2-Dichlorobenzene | ND | 3.30 | " | " | " | " | " | " | |
| 1,3-Dichlorobenzene | ND | 3.30 | " | " | " | " | " | " | |
| 1,4-Dichlorobenzene | ND | 3.30 | " | " | " | " | " | " | |
| 2,4,5-Trichlorophenol | ND | 3.30 | " | " | " | " | " | " | |
| 2,4,6-Trichlorophenol | ND | 3.30 | " | " | " | " | " | " | |
| 2,4-Dichlorophenol | ND | 3.30 | " | " | " | " | " | " | |
| 2,4-Dimethylphenol | ND | 3.30 | " | " | " | " | " | " | |
| 2,4-Dinitrophenol | ND | 5.00 | " | " | " | " | " | " | |
| 2,4-Dinitrotoluene | ND | 5.00 | " | " | " | " | " | " | |
| 2,6-Dinitrotoluene | ND | 5.00 | " | " | " | " | " | " | |
| 2-Chloronaphthalene | ND | 3.30 | " | " | " | " | " | " | |
| 2-Chlorophenol | ND | 3.30 | " | " | " | " | " | " | |
| 2-Methylnaphthalene | ND | 3.30 | " | " | " | " | " | " | |
| 2-Methylphenol | ND | 3.30 | " | " | " | " | " | " | |
| 2-Nitroaniline | ND | 5.00 | " | " | " | " | " | " | |
| 2-Nitrophenol | ND | 3.30 | " | " | " | " | " | " | |
| 3 & 4-Methylphenol | ND | 3.30 | " | " | " | " | " | " | |
| 3,3'-Dichlorobenzidine | ND | 50.0 | " | " | " | " | " | " | |
| 3-Nitroaniline | ND | 5.00 | " | " | " | " | " | " | |
| 4,6-Dinitro-2-methylphenol | ND | 5.00 | " | " | " | " | " | " | |
| 4-Bromophenyl phenyl ether | ND | 3.30 | " | " | " | " | " | " | |
| 4-Chloro-3-methylphenol | ND | 3.30 | " | " | " | " | " | " | |
| 4-Chloroaniline | ND | 5.00 | " | " | " | " | " | " | |
| 4-Chlorophenyl phenyl ether | ND | 3.30 | " | " | " | " | " | " | |
| 4-Nitroaniline | ND | 5.00 | " | " | " | " | " | " | |
| 4-Nitrophenol | ND | 5.00 | " | " | " | " | " | " | |
| Acenaphthene | ND | 3.30 | " | " | " | " | " | " | |
| Acenaphthylene | ND | 3.30 | " | " | " | " | " | " | |
| Aniline | ND | 3.30 | " | " | " | " | " | " | |
| Anthracene | ND | 3.30 | " | " | " | " | " | " | |
| Benzo (a) anthracene | ND | 3.30 | " | " | " | " | " | " | |
| Benzo (a) pyrene | ND | 3.30 | " | " | " | " | " | " | |
| Benzo (b) fluoranthene | ND | 3.30 | " | " | " | " | " | " | |
| Benzo (ghi) perylene | ND | 3.30 | " | " | " | " | " | " | |
| Benzo (k) fluoranthene | ND | 3.30 | " | " | " | " | " | " | |
| Benzoic Acid | ND | 10.0 | " | " | " | " | " | " | |
| Benzyl alcohol | ND | 3.30 | " | " | " | " | " | " | |

North Creek Analytical - Bothell

The results in this report apply to the samples analyzed in accordance with the chain of custody document. This analytical report must be reproduced in its entirety.

Kathleen Orr
 Kathleen Orr, PM



Seattle 11720 North Creek Pkwy N, Suite 400, Bothell, WA 98011-8244
 425.420.9200 fax 425.420.9210
 Spokane East 11115 Montgomery, Suite B, Spokane, WA 99206-4776
 509.924.9200 fax 509.924.9290
 Portland 9405 SW Nimbus Avenue, Beaverton, OR 97008-7132
 503.906.9200 fax 503.906.9210
 Bend 20332 Empire Avenue, Suite F-1, Bend, OR 97701-5711
 541.383.9310 fax 541.382.7588
 Anchorage 2000 W International Airport Road, Suite A-10, Anchorage, AK 99502-1119
 907.563.9200 fax 907.563.9210

Geomatrix Consultants, Inc. - Seattle
 600 University Street, Suite 1020
 Seattle, WA 98101

Project: Anacortes A Avenue
 Project Number: 9156
 Project Manager: Kathleen Goodman

Reported:
 01/08/04 18:28

Semivolatile Organic Compounds by EPA Method 8270C
North Creek Analytical - Bothell

| Analyte | Result | Reporting | | Units | Dilution | Batch | Prepared | Analyzed | Method | Notes |
|---|--------|-----------|--|-----------|----------|---------|----------|----------|-----------|-------|
| | | Limit | | | | | | | | |
| S-3-121803 (B3L0652-03) Soil Sampled: 12/18/03 11:03 Received: 12/18/03 15:44 D-14 | | | | | | | | | | |
| Bis(2-chloroethoxy)methane | ND | 3.30 | | mg/kg dry | 10 | 3L19015 | 12/19/03 | 01/02/04 | EPA 8270C | |
| Bis(2-chloroethyl)ether | ND | 3.30 | | " | " | " | " | " | " | |
| Bis(2-chloroisopropyl)ether | ND | 3.30 | | " | " | " | " | " | " | |
| Bis(2-ethylhexyl)phthalate | ND | 3.30 | | " | " | " | " | " | " | |
| Butyl benzyl phthalate | ND | 3.30 | | " | " | " | " | " | " | |
| Carbazole | ND | 3.30 | | " | " | " | " | " | " | |
| Chrysene | ND | 3.30 | | " | " | " | " | " | " | |
| Di-n-butyl phthalate | ND | 3.30 | | " | " | " | " | " | " | |
| Di-n-octyl phthalate | ND | 3.30 | | " | " | " | " | " | " | |
| Dibenz (a,h) anthracene | ND | 3.30 | | " | " | " | " | " | " | |
| Dibenzofuran | ND | 3.30 | | " | " | " | " | " | " | |
| Diethyl phthalate | ND | 3.30 | | " | " | " | " | " | " | |
| Dimethyl phthalate | ND | 3.30 | | " | " | " | " | " | " | |
| Fluoranthene | ND | 3.30 | | " | " | " | " | " | " | |
| Fluorene | ND | 3.30 | | " | " | " | " | " | " | |
| Hexachlorobenzene | ND | 3.30 | | " | " | " | " | " | " | |
| Hexachlorobutadiene | ND | 3.30 | | " | " | " | " | " | " | |
| Hexachlorocyclopentadiene | ND | 5.00 | | " | " | " | " | " | " | |
| Hexachloroethane | ND | 3.30 | | " | " | " | " | " | " | |
| Indeno (1,2,3-cd) pyrene | ND | 3.30 | | " | " | " | " | " | " | |
| Isophorone | ND | 3.30 | | " | " | " | " | " | " | |
| N-Nitrosodi-n-propylamine | ND | 3.30 | | " | " | " | " | " | " | |
| N-Nitrosodiphenylamine | ND | 3.30 | | " | " | " | " | " | " | |
| Naphthalene | ND | 3.30 | | " | " | " | " | " | " | |
| Nitrobenzene | ND | 3.30 | | " | " | " | " | " | " | |
| Pentachlorophenol | ND | 5.00 | | " | " | " | " | " | " | |
| Phenanthrene | ND | 3.30 | | " | " | " | " | " | " | |
| Phenol | ND | 3.30 | | " | " | " | " | " | " | |
| Pyrene | ND | 3.30 | | " | " | " | " | " | " | |
| Surrogate: 2-FP | 64.7 % | 26-137 | | | | " | " | " | " | |
| Surrogate: Phenol-d6 | 62.6 % | 10-153 | | | | " | " | " | " | |
| Surrogate: 2,4,6-TBP | 42.0 % | 10-133 | | | | " | " | " | " | |
| Surrogate: Nitrobenzene-d5 | 72.6 % | 48-127 | | | | " | " | " | " | |
| Surrogate: p-Terphenyl-d14 | 85.8 % | 44-144 | | | | " | " | " | " | |
| Surrogate: 2-FBP | 82.6 % | 36-146 | | | | " | " | " | " | |

North Creek Analytical - Bothell

The results in this report apply to the samples analyzed in accordance with the chain of custody document. This analytical report must be reproduced in its entirety.

Kortland Orr, PM



Seattle 11720 North Creek Pkwy N, Suite 400, Bothell, WA 98011-8244
 425.420.9200 fax 425.420.9210
 Spokane East 11115 Montgomery, Suite B, Spokane, WA 99206-4776
 509.924.9200 fax 509.924.9290
 Portland 9405 SW Nimbus Avenue, Beaverton, OR 97008-7132
 503.906.9200 fax 503.906.9210
 Bend 20332 Empire Avenue, Suite F-1, Bend, OR 97701-5711
 541.383.9310 fax 541.382.7588
 Anchorage 2000 W International Airport Road, Suite A-10, Anchorage, AK 99502-1119
 907.563.9200 fax 907.563.9210

Geomatrix Consultants, Inc. - Seattle
 600 University Street, Suite 1020
 Seattle, WA 98101

Project: Anacortes A Avenue
 Project Number: 9156
 Project Manager: Kathleen Goodman

Reported:
 01/08/04 18:28

Semivolatile Organic Compounds by EPA Method 8270C
North Creek Analytical - Bothell

| Analyte | Result | Reporting Limit | Units | Dilution | Batch | Prepared | Analyzed | Method | Notes |
|---|--------|-----------------|-----------|----------|---------|----------|----------|-----------|-------|
| S-4-121803 (B3L0652-04) Soil Sampled: 12/18/03 11:25 Received: 12/18/03 15:44 | | | | | | | | | |
| 1,2,4-Trichlorobenzene | ND | 3.30 | mg/kg dry | 10 | 3L19015 | 12/19/03 | 01/03/04 | EPA 8270C | |
| 1,2-Dichlorobenzene | ND | 3.30 | " | " | " | " | " | " | |
| 1,3-Dichlorobenzene | ND | 3.30 | " | " | " | " | " | " | |
| 1,4-Dichlorobenzene | ND | 3.30 | " | " | " | " | " | " | |
| 2,4,5-Trichlorophenol | ND | 3.30 | " | " | " | " | " | " | |
| 2,4,6-Trichlorophenol | ND | 3.30 | " | " | " | " | " | " | |
| 2,4-Dichlorophenol | ND | 3.30 | " | " | " | " | " | " | |
| 2,4-Dimethylphenol | ND | 3.30 | " | " | " | " | " | " | |
| 2,4-Dinitrophenol | ND | 5.00 | " | " | " | " | " | " | |
| 2,4-Dinitrotoluene | ND | 5.00 | " | " | " | " | " | " | |
| 2,6-Dinitrotoluene | ND | 5.00 | " | " | " | " | " | " | |
| 2-Chloronaphthalene | ND | 3.30 | " | " | " | " | " | " | |
| 2-Chlorophenol | ND | 3.30 | " | " | " | " | " | " | |
| 2-Methylnaphthalene | ND | 3.30 | " | " | " | " | " | " | |
| 2-Methylphenol | ND | 3.30 | " | " | " | " | " | " | |
| 2-Nitroaniline | ND | 5.00 | " | " | " | " | " | " | |
| 2-Nitrophenol | ND | 3.30 | " | " | " | " | " | " | |
| 3 & 4-Methylphenol | ND | 3.30 | " | " | " | " | " | " | |
| 3,3'-Dichlorobenzidine | ND | 50.0 | " | " | " | " | " | " | |
| 3-Nitroaniline | ND | 5.00 | " | " | " | " | " | " | |
| 4,6-Dinitro-2-methylphenol | ND | 5.00 | " | " | " | " | " | " | |
| 4-Bromophenyl phenyl ether | ND | 3.30 | " | " | " | " | " | " | |
| 4-Chloro-3-methylphenol | ND | 3.30 | " | " | " | " | " | " | |
| 4-Chloroaniline | ND | 5.00 | " | " | " | " | " | " | |
| 4-Chlorophenyl phenyl ether | ND | 3.30 | " | " | " | " | " | " | |
| 4-Nitroaniline | ND | 5.00 | " | " | " | " | " | " | |
| 4-Nitrophenol | ND | 5.00 | " | " | " | " | " | " | |
| Acenaphthene | ND | 3.30 | " | " | " | " | " | " | |
| Acenaphthylene | ND | 3.30 | " | " | " | " | " | " | |
| Aniline | ND | 3.30 | " | " | " | " | " | " | |
| Anthracene | ND | 3.30 | " | " | " | " | " | " | |
| Benzo (a) anthracene | ND | 3.30 | " | " | " | " | " | " | |
| Benzo (a) pyrene | ND | 3.30 | " | " | " | " | " | " | |
| Benzo (b) fluoranthene | ND | 3.30 | " | " | " | " | " | " | |
| Benzo (ghi) perylene | ND | 3.30 | " | " | " | " | " | " | |
| Benzo (k) fluoranthene | ND | 3.30 | " | " | " | " | " | " | |
| Benzoic Acid | ND | 10.0 | " | " | " | " | " | " | |
| Benzyl alcohol | ND | 3.30 | " | " | " | " | " | " | |

North Creek Analytical - Bothell

The results in this report apply to the samples analyzed in accordance with the chain of custody document. This analytical report must be reproduced in its entirety.

Kortland Orr

 Kortland Orr, PM



Seattle 11720 North Creek Pkwy N, Suite 400, Bothell, WA 98011-8244
 425.420.9200 fax 425.420.9210
 Spokane East 11115 Montgomery, Suite B, Spokane, WA 99206-4776
 509.924.9200 fax 509.924.9290
 Portland 9405 SW Nimbus Avenue, Beaverton, OR 97008-7132
 503.906.9200 fax 503.906.9210
 Bend 20332 Empire Avenue, Suite F-1, Bend, OR 97701-5711
 541.383.9310 fax 541.382.7588
 Anchorage 2000 W International Airport Road, Suite A-10, Anchorage, AK 99502-1119
 907.563.9200 fax 907.563.9210

Geomatrix Consultants, Inc. - Seattle
 600 University Street, Suite 1020
 Seattle, WA 98101

Project: Anacortes A Avenue
 Project Number: 9156
 Project Manager: Kathleen Goodman

Reported:
 01/08/04 18:28

Semivolatile Organic Compounds by EPA Method 8270C
North Creek Analytical - Bothell

| Analyte | Result | Reporting Limit | Units | Dilution | Batch | Prepared | Analyzed | Method | Notes |
|---|--------|-----------------|-----------|----------|---------|----------|----------|-----------|-------|
| S-4-121803 (B3L0652-04) Soil Sampled: 12/18/03 11:25 Received: 12/18/03 15:44 D-14 | | | | | | | | | |
| Bis(2-chloroethoxy)methane | ND | 3.30 | mg/kg dry | 10 | 3L19015 | 12/19/03 | 01/03/04 | EPA 8270C | |
| Bis(2-chloroethyl)ether | ND | 3.30 | " | " | " | " | " | " | |
| Bis(2-chloroisopropyl)ether | ND | 3.30 | " | " | " | " | " | " | |
| Bis(2-ethylhexyl)phthalate | ND | 3.30 | " | " | " | " | " | " | |
| Butyl benzyl phthalate | ND | 3.30 | " | " | " | " | " | " | |
| Carbazole | ND | 3.30 | " | " | " | " | " | " | |
| Chrysene | ND | 3.30 | " | " | " | " | " | " | |
| Di-n-butyl phthalate | ND | 3.30 | " | " | " | " | " | " | |
| Di-n-octyl phthalate | ND | 3.30 | " | " | " | " | " | " | |
| Dibenz (a,h) anthracene | ND | 3.30 | " | " | " | " | " | " | |
| Dibenzofuran | ND | 3.30 | " | " | " | " | " | " | |
| Diethyl phthalate | ND | 3.30 | " | " | " | " | " | " | |
| Dimethyl phthalate | ND | 3.30 | " | " | " | " | " | " | |
| Fluoranthene | ND | 3.30 | " | " | " | " | " | " | |
| Fluorene | ND | 3.30 | " | " | " | " | " | " | |
| Hexachlorobenzene | ND | 3.30 | " | " | " | " | " | " | |
| Hexachlorobutadiene | ND | 3.30 | " | " | " | " | " | " | |
| Hexachlorocyclopentadiene | ND | 5.00 | " | " | " | " | " | " | |
| Hexachloroethane | ND | 3.30 | " | " | " | " | " | " | |
| Indeno (1,2,3-cd) pyrene | ND | 3.30 | " | " | " | " | " | " | |
| Isophorone | ND | 3.30 | " | " | " | " | " | " | |
| N-Nitrosodi-n-propylamine | ND | 3.30 | " | " | " | " | " | " | |
| N-Nitrosodiphenylamine | ND | 3.30 | " | " | " | " | " | " | |
| Naphthalene | ND | 3.30 | " | " | " | " | " | " | |
| Nitrobenzene | ND | 3.30 | " | " | " | " | " | " | |
| Pentachlorophenol | ND | 5.00 | " | " | " | " | " | " | |
| Phenanthrene | ND | 3.30 | " | " | " | " | " | " | |
| Phenol | ND | 3.30 | " | " | " | " | " | " | |
| Pyrene | ND | 3.30 | " | " | " | " | " | " | |
| Surrogate: 2-FP | 73.6 % | 26-137 | | | " | " | " | " | |
| Surrogate: Phenol-d6 | 65.7 % | 10-153 | | | " | " | " | " | |
| Surrogate: 2,4,6-TBP | 53.1 % | 10-133 | | | " | " | " | " | |
| Surrogate: Nitrobenzene-d5 | 79.8 % | 48-127 | | | " | " | " | " | |
| Surrogate: p-Terphenyl-d14 | 93.8 % | 44-144 | | | " | " | " | " | |
| Surrogate: 2-FBP | 84.3 % | 36-146 | | | " | " | " | " | |

North Creek Analytical - Bothell

The results in this report apply to the samples analyzed in accordance with the chain of custody document. This analytical report must be reproduced in its entirety.

Kortland Orr, PM



Seattle 11720 North Creek Parkway N, Suite 400, Bothell, WA 98011-8244
 425.420.9200 fax 425.420.9210
 Spokane East 11115 Montgomery, Suite B, Spokane, WA 99206-4776
 509.924.9200 fax 509.924.9290
 Portland 9405 SW Nimbus Avenue, Beaverton, OR 97008-7132
 503.906.9200 fax 503.906.9210
 Bend 20332 Empire Avenue, Suite F-1, Bend, OR 97701-5711
 541.383.9310 fax 541.382.7588
 Anchorage 2000 W International Airport Road, Suite A-10, Anchorage, AK 99502-1119
 907.563.9200 fax 907.563.9210

Geomatrix Consultants, Inc. - Seattle
 600 University Street, Suite 1020
 Seattle, WA 98101

Project: Anacortes A Avenue
 Project Number: 9156
 Project Manager: Kathleen Goodman

Reported:
 01/08/04 18:28

Semivolatile Organic Compounds by EPA Method 8270C
North Creek Analytical - Bothell

| Analyte | Result | Reporting Limit | Units | Dilution | Batch | Prepared | Analyzed | Method | Notes |
|---|--------|-----------------|-----------|----------|---------|----------|----------|-----------|-------|
| S-5-121803 (B3L0652-05) Soil Sampled: 12/18/03 12:05 Received: 12/18/03 15:44 | | | | | | | | | |
| 1,2,4-Trichlorobenzene | ND | 0.330 | mg/kg dry | 1 | 3L19015 | 12/19/03 | 01/06/04 | EPA 8270C | |
| 1,2-Dichlorobenzene | ND | 0.330 | " | " | " | " | " | " | |
| 1,3-Dichlorobenzene | ND | 0.330 | " | " | " | " | " | " | |
| 1,4-Dichlorobenzene | ND | 0.330 | " | " | " | " | " | " | |
| 2,4,5-Trichlorophenol | ND | 0.330 | " | " | " | " | " | " | |
| 2,4,6-Trichlorophenol | ND | 0.330 | " | " | " | " | " | " | |
| 2,4-Dichlorophenol | ND | 0.330 | " | " | " | " | " | " | |
| 2,4-Dimethylphenol | ND | 0.330 | " | " | " | " | " | " | |
| 2,4-Dinitrophenol | ND | 0.500 | " | " | " | " | " | " | |
| 2,4-Dinitrotoluene | ND | 0.500 | " | " | " | " | " | " | |
| 2,6-Dinitrotoluene | ND | 0.500 | " | " | " | " | " | " | |
| 2-Chloronaphthalene | ND | 0.330 | " | " | " | " | " | " | |
| 2-Chlorophenol | ND | 0.330 | " | " | " | " | " | " | |
| 2-Methylnaphthalene | ND | 0.330 | " | " | " | " | " | " | |
| 2-Methylphenol | ND | 0.330 | " | " | " | " | " | " | |
| 2-Nitroaniline | ND | 0.500 | " | " | " | " | " | " | |
| 2-Nitrophenol | ND | 0.330 | " | " | " | " | " | " | |
| 3 & 4-Methylphenol | ND | 0.330 | " | " | " | " | " | " | |
| 3,3'-Dichlorobenzidine | ND | 5.00 | " | " | " | " | " | " | |
| 3-Nitroaniline | ND | 0.500 | " | " | " | " | " | " | |
| 4,6-Dinitro-2-methylphenol | ND | 0.500 | " | " | " | " | " | " | |
| 4-Bromophenyl phenyl ether | ND | 0.330 | " | " | " | " | " | " | |
| 4-Chloro-3-methylphenol | ND | 0.330 | " | " | " | " | " | " | |
| 4-Chloroaniline | ND | 0.500 | " | " | " | " | " | " | |
| 4-Chlorophenyl phenyl ether | ND | 0.330 | " | " | " | " | " | " | |
| 4-Nitroaniline | ND | 0.500 | " | " | " | " | " | " | |
| 4-Nitrophenol | ND | 0.500 | " | " | " | " | " | " | |
| Acenaphthene | ND | 0.330 | " | " | " | " | " | " | |
| Acenaphthylene | ND | 0.330 | " | " | " | " | " | " | |
| Aniline | ND | 0.330 | " | " | " | " | " | " | |
| Anthracene | ND | 0.330 | " | " | " | " | " | " | |
| Benzo (a) anthracene | ND | 0.330 | " | " | " | " | " | " | |
| Benzo (a) pyrene | ND | 0.330 | " | " | " | " | " | " | |
| Benzo (b) fluoranthene | ND | 0.330 | " | " | " | " | " | " | |
| Benzo (ghi) perylene | ND | 0.330 | " | " | " | " | " | " | |
| Benzo (k) fluoranthene | ND | 0.330 | " | " | " | " | " | " | |
| Benzoic Acid | ND | 1.00 | " | " | " | " | " | " | |
| Benzyl alcohol | ND | 0.330 | " | " | " | " | " | " | |

North Creek Analytical - Bothell

The results in this report apply to the samples analyzed in accordance with the chain of custody document. This analytical report must be reproduced in its entirety.

Kortland Orr, PM

North Creek Analytical, Inc.
 Environmental Laboratory Network



Seattle 11720 North Creek Pkwy N, Suite 400, Bothell, WA 98011-8244
 425.420.9200 fax 425.420.9210
 Spokane East 11115 Montgomery, Suite B, Spokane, WA 99206-4776
 509.924.9200 fax 509.924.9290
 Portland 9405 SW Nimbus Avenue, Beaverton, OR 97008-7132
 503.906.9200 fax 503.906.9210
 Bend 20332 Empire Avenue, Suite F-1, Bend, OR 97701-5711
 541.383.9310 fax 541.382.7588
 Anchorage 2000 W International Airport Road, Suite A-10, Anchorage, AK 99502-1119
 907.563.9200 fax 907.563.9210

Geomatrix Consultants, Inc. - Seattle
 600 University Street, Suite 1020
 Seattle, WA 98101

Project: Anacortes A Avenue
 Project Number: 9156
 Project Manager: Kathleen Goodman

Reported:
 01/08/04 18:28

Semivolatile Organic Compounds by EPA Method 8270C
North Creek Analytical - Bothell

| Analyte | Result | Reporting Limit | Units | Dilution | Batch | Prepared | Analyzed | Method | Notes |
|--|--------|-----------------|-----------|----------|---------|----------|----------|-----------|-------|
| S-5-121803 (B3L0652-05) Soil Sampled: 12/18/03 12:05 Received: 12/18/03 15:44 | | | | | | | | | |
| Bis(2-chloroethoxy)methane | ND | 0.330 | mg/kg dry | 1 | 3L19015 | 12/19/03 | 01/06/04 | EPA 8270C | |
| Bis(2-chloroethyl)ether | ND | 0.330 | " | " | " | " | " | " | |
| Bis(2-chloroisopropyl)ether | ND | 0.330 | " | " | " | " | " | " | |
| Bis(2-ethylhexyl)phthalate | ND | 0.330 | " | " | " | " | " | " | |
| Butyl benzyl phthalate | ND | 0.330 | " | " | " | " | " | " | |
| Carbazole | ND | 0.330 | " | " | " | " | " | " | |
| Chrysene | ND | 0.330 | " | " | " | " | " | " | |
| Di-n-butyl phthalate | ND | 0.330 | " | " | " | " | " | " | |
| Di-n-octyl phthalate | ND | 0.330 | " | " | " | " | " | " | |
| Dibenz (a,h) anthracene | ND | 0.330 | " | " | " | " | " | " | |
| Dibenzofuran | ND | 0.330 | " | " | " | " | " | " | |
| Diethyl phthalate | ND | 0.330 | " | " | " | " | " | " | |
| Dimethyl phthalate | ND | 0.330 | " | " | " | " | " | " | |
| Fluoranthene | ND | 0.330 | " | " | " | " | " | " | |
| Fluorene | ND | 0.330 | " | " | " | " | " | " | |
| Hexachlorobenzene | ND | 0.330 | " | " | " | " | " | " | |
| Hexachlorobutadiene | ND | 0.330 | " | " | " | " | " | " | |
| Hexachlorocyclopentadiene | ND | 0.500 | " | " | " | " | " | " | |
| Hexachloroethane | ND | 0.330 | " | " | " | " | " | " | |
| Indeno (1,2,3-cd) pyrene | ND | 0.330 | " | " | " | " | " | " | |
| Isophorone | ND | 0.330 | " | " | " | " | " | " | |
| N-Nitrosodi-n-propylamine | ND | 0.330 | " | " | " | " | " | " | |
| N-Nitrosodiphenylamine | ND | 0.330 | " | " | " | " | " | " | |
| Naphthalene | ND | 0.330 | " | " | " | " | " | " | |
| Nitrobenzene | ND | 0.330 | " | " | " | " | " | " | |
| Pentachlorophenol | ND | 0.500 | " | " | " | " | " | " | |
| Phenanthrene | ND | 0.330 | " | " | " | " | " | " | |
| Phenol | ND | 0.330 | " | " | " | " | " | " | |
| Pyrene | ND | 0.330 | " | " | " | " | " | " | |
| Surrogate: 2-FP | 55.0 % | 26-137 | | | " | " | " | " | |
| Surrogate: Phenol-d6 | 65.6 % | 10-153 | | | " | " | " | " | |
| Surrogate: 2,4,6-TBP | 57.1 % | 10-133 | | | " | " | " | " | |
| Surrogate: Nitrobenzene-d5 | 64.0 % | 48-127 | | | " | " | " | " | |
| Surrogate: p-Terphenyl-d14 | 76.7 % | 44-144 | | | " | " | " | " | |
| Surrogate: 2-FBP | 64.0 % | 36-146 | | | " | " | " | " | |

North Creek Analytical - Bothell

The results in this report apply to the samples analyzed in accordance with the chain of custody document. This analytical report must be reproduced in its entirety.

Kortland Orr, PM

North Creek Analytical, Inc.
 Environmental Laboratory Network



Seattle 11720 North Creek Pkwy N, Suite 400, Bothell, WA 98011-8244
 425.420.9200 fax 425.420.9210
 Spokane East 11115 Montgomery, Suite B, Spokane, WA 99206-4776
 509.924.9200 fax 509.924.9290
 Portland 9405 SW Nimbus Avenue, Beaverton, OR 97008-7132
 503.906.9200 fax 503.906.9210
 Bend 20332 Empire Avenue, Suite F-1, Bend, OR 97701-5711
 541.383.9310 fax 541.382.7588
 Anchorage 2000 W International Airport Road, Suite A-10, Anchorage, AK 99502-1119
 907.563.9200 fax 907.563.9210

Geomatrix Consultants, Inc. - Seattle
 600 University Street, Suite 1020
 Seattle, WA 98101

Project: Anacortes A Avenue
 Project Number: 9156
 Project Manager: Kathleen Goodman

Reported:
 01/08/04 18:28

Conventional Chemistry Parameters by APHA/EPA Methods
North Creek Analytical - Bothell

| Analyte | Result | Reporting Limit | Units | Dilution | Batch | Prepared | Analyzed | Method | Notes |
|--|--------|-----------------|---------------|----------|---------|----------|----------|-----------|-------|
| Seep-1-121803 (B3L0652-06) Water Sampled: 12/18/03 12:41 Received: 12/18/03 15:44 | | | | | | | | | |
| Total Alkalinity | 425 | 5.00 | mg/L as CaCO3 | 1 | 3L22050 | 12/22/03 | 12/22/03 | SM 2320B | |
| Bicarbonate Alkalinity | 425 | 5.00 | " | " | " | " | " | " | |
| Hydroxide Alkalinity | ND | 5.00 | " | " | " | " | " | " | |
| Carbonate Alkalinity | ND | 5.00 | " | " | " | " | " | " | |
| Ammonia-Nitrogen | 2.19 | 0.100 | mg/l as N | " | 3L31048 | 12/31/03 | 12/31/03 | EPA 350.3 | |
| Total Dissolved Solids | 500 | 10 | mg/l | " | 3L19048 | 12/19/03 | 12/22/03 | EPA 160.1 | |
| Total Organic Carbon | 26.1 | 8.00 | " | 4 | 4A04003 | 01/03/04 | 01/03/04 | EPA 415.1 | |
| Seep-2-121803 (B3L0652-07) Water Sampled: 12/18/03 13:19 Received: 12/18/03 15:44 | | | | | | | | | |
| Carbonate Alkalinity | ND | 5.00 | mg/L as CaCO3 | 1 | 3L22050 | 12/22/03 | 12/22/03 | SM 2320B | |
| Hydroxide Alkalinity | ND | 5.00 | " | " | " | " | " | " | |
| Total Alkalinity | 602 | 5.00 | " | " | " | " | " | " | |
| Bicarbonate Alkalinity | 602 | 5.00 | " | " | " | " | " | " | |
| Ammonia-Nitrogen | 3.57 | 0.100 | mg/l as N | " | 3L31048 | 12/31/03 | 12/31/03 | EPA 350.3 | |
| Total Dissolved Solids | 830 | 10 | mg/l | " | 3L19048 | 12/19/03 | 12/22/03 | EPA 160.1 | |
| Total Organic Carbon | 50.6 | 8.00 | " | 4 | 4A04003 | 01/03/04 | 01/03/04 | EPA 415.1 | |

North Creek Analytical - Bothell

The results in this report apply to the samples analyzed in accordance with the chain of custody document. This analytical report must be reproduced in its entirety.

Kortland Orr, PM



Seattle 11720 North Creek Pkwy N, Suite 400, Bothell, WA 98011-8244
 425.420.9200 fax 425.420.9210
 Spokane East 11115 Montgomery, Suite B, Spokane, WA 99206-4776
 509.924.9200 fax 509.924.9290
 Portland 9405 SW Nimbus Avenue, Beaverton, OR 97008-7132
 503.906.9200 fax 503.906.9210
 Bend 20332 Empire Avenue, Suite F-1, Bend, OR 97701-5711
 541.383.9310 fax 541.382.7588
 Anchorage 2000 W International Airport Road, Suite A-10, Anchorage, AK 99502-1119
 907.563.9200 fax 907.563.9210

Geomatrix Consultants, Inc. - Seattle
 600 University Street, Suite 1020
 Seattle, WA 98101

Project: Anacortes A Avenue
 Project Number: 9156
 Project Manager: Kathleen Goodman

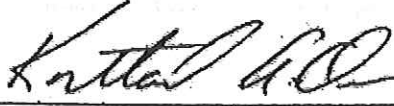
Reported:
 01/08/04 18:28

Anions by EPA Method 300.0
North Creek Analytical - Bothell

| Analyte | Result | Reporting Limit | Units | Dilution | Batch | Prepared | Analyzed | Method | Notes |
|--|--------|-----------------|-----------|----------|---------|----------|----------|-----------|-------|
| Seep-1-121803 (B3L0652-06) Water Sampled: 12/18/03 12:41 Received: 12/18/03 15:44 | | | | | | | | | |
| Chloride | 45.6 | 10.0 | mg/l | 25 | 3L29006 | 12/28/03 | 12/28/03 | EPA 300.0 | |
| Nitrate-Nitrogen | ND | 0.200 | mg/l as N | 1 | 3L20002 | 12/19/03 | 12/19/03 | " | |
| Sulfate | 3.33 | 0.400 | mg/l | " | 3L29006 | 12/28/03 | 12/28/03 | " | |
| Seep-2-121803 (B3L0652-07) Water Sampled: 12/18/03 13:19 Received: 12/18/03 15:44 | | | | | | | | | |
| Chloride | 35.8 | 8.00 | mg/l | 20 | 3L29006 | 12/28/03 | 12/28/03 | EPA 300.0 | |
| Nitrate-Nitrogen | 1.07 | 0.200 | mg/l as N | 1 | 3L20002 | 12/19/03 | 12/19/03 | " | |
| Sulfate | 69.7 | 8.00 | mg/l | 20 | 3L29006 | 12/28/03 | 12/28/03 | " | |

North Creek Analytical - Bothell

The results in this report apply to the samples analyzed in accordance with the chain of custody document. This analytical report must be reproduced in its entirety.


 Kathleen Orr, PM



Seattle 11720 North Creek Pkwy N, Suite 400, Bothell, WA 98011-8244
 425.420.9200 fax 425.420.9210
 Spokane East 11115 Montgomery, Suite B, Spokane, WA 99206-4776
 509.924.9200 fax 509.924.9290
 Portland 9405 SW Nimbus Avenue, Beaverton, OR 97008-7132
 503.906.9200 fax 503.906.9210
 Bend 20332 Empire Avenue, Suite F-1, Bend, OR 97701-5711
 541.383.9310 fax 541.382.7588
 Anchorage 2000 W International Airport Road, Suite A-10, Anchorage, AK 99502-1119
 907.563.9200 fax 907.563.9210

Geomatrix Consultants, Inc. - Seattle
 600 University Street, Suite 1020
 Seattle, WA 98101

Project: Anacortes A Avenue
 Project Number: 9156
 Project Manager: Kathleen Goodman

Reported:
 01/08/04 18:28

Physical Parameters by APHA/ASTM/EPA Methods
North Creek Analytical - Bothell

| Analyte | Result | Reporting Limit | Units | Dilution | Batch | Prepared | Analyzed | Method | Notes |
|--|--------|-----------------|-------|----------|---------|----------|----------|---------------|-------|
| S-1-121803 (B3L0652-01) Soil Sampled: 12/18/03 10:07 Received: 12/18/03 15:44 | | | | | | | | | |
| Dry Weight | 87.0 | 1.00 | % | 1 | 3L22042 | 12/22/03 | 12/23/03 | BSOPSPL003R08 | |
| S-2-121803 (B3L0652-02) Soil Sampled: 12/18/03 10:38 Received: 12/18/03 15:44 | | | | | | | | | |
| Dry Weight | 81.1 | 1.00 | % | 1 | 3L22042 | 12/22/03 | 12/23/03 | BSOPSPL003R08 | |
| S-3-121803 (B3L0652-03) Soil Sampled: 12/18/03 11:03 Received: 12/18/03 15:44 | | | | | | | | | |
| Dry Weight | 87.7 | 1.00 | % | 1 | 3L22042 | 12/22/03 | 12/23/03 | BSOPSPL003R08 | |
| S-4-121803 (B3L0652-04) Soil Sampled: 12/18/03 11:25 Received: 12/18/03 15:44 | | | | | | | | | |
| Dry Weight | 93.7 | 1.00 | % | 1 | 3L22042 | 12/22/03 | 12/23/03 | BSOPSPL003R08 | |
| S-5-121803 (B3L0652-05) Soil Sampled: 12/18/03 12:05 Received: 12/18/03 15:44 | | | | | | | | | |
| Dry Weight | 88.1 | 1.00 | % | 1 | 3L22042 | 12/22/03 | 12/23/03 | BSOPSPL003R08 | |

North Creek Analytical - Bothell

The results in this report apply to the samples analyzed in accordance with the chain of custody document. This analytical report must be reproduced in its entirety.

Kortland Orr, PM



Seattle 11720 North Creek Pkwy N, Suite 400, Bothell, WA 98011-8244
 425.420.9200 fax 425.420.9210
 Spokane East 11115 Montgomery, Suite B, Spokane, WA 99206-4776
 509.924.9200 fax 509.924.9290
 Portland 9405 SW Nimbus Avenue, Beaverton, OR 97008-7132
 503.906.9200 fax 503.906.9210
 Bend 20332 Empire Avenue, Suite F-1, Bend, OR 97701-5711
 541.383.9310 fax 541.382.7588
 Anchorage 2000 W International Airport Road, Suite A-10, Anchorage, AK 99502-1119
 907.563.9200 fax 907.563.9210

Geomatrix Consultants, Inc. - Seattle
 600 University Street, Suite 1020
 Seattle, WA 98101

Project: Anacortes A Avenue
 Project Number: 9156
 Project Manager: Kathleen Goodman

Reported:
 01/08/04 18:28

Semivolatile Petroleum Products by NWTPH-Dx (w/o Acid/Silica Gel Clean-up) - Quality Control
North Creek Analytical - Bothell

| Analyte | Result | Reporting Limit | Units | Spike Level | Source Result | %REC | %REC Limits | RPD | RPD Limit | Notes |
|---------|--------|-----------------|-------|-------------|---------------|------|-------------|-----|-----------|-------|
|---------|--------|-----------------|-------|-------------|---------------|------|-------------|-----|-----------|-------|

Batch 3L22030: Prepared 12/22/03 Using EPA 3550B

Blank (3L22030-BLK1)

| | | | | | | | | | | |
|-----------------------------|------|------|-------|------|--|------|--------|--|--|------|
| Diesel Range Hydrocarbons | ND | 10.0 | mg/kg | | | | | | | |
| Lube Oil Range Hydrocarbons | ND | 25.0 | " | | | | | | | |
| Surrogate: 2-FBP | 10.0 | | " | 10.7 | | 93.5 | 50-150 | | | |
| Surrogate: Octacosane | 6.55 | | " | 5.33 | | 123 | 57-120 | | | S-10 |

LCS (3L22030-BS1)

| | | | | | | | | | | |
|---------------------------|------|------|-------|------|--|------|--------|--|--|--|
| Diesel Range Hydrocarbons | 60.7 | 10.0 | mg/kg | 66.7 | | 91.0 | 70-130 | | | |
| Surrogate: 2-FBP | 11.3 | | " | 10.7 | | 106 | 50-150 | | | |

LCS Dup (3L22030-BSD1)

| | | | | | | | | | | |
|---------------------------|------|------|-------|------|--|------|--------|------|----|--|
| Diesel Range Hydrocarbons | 60.0 | 10.0 | mg/kg | 66.7 | | 90.0 | 70-130 | 1.16 | 40 | |
| Surrogate: 2-FBP | 9.98 | | " | 10.7 | | 93.3 | 50-150 | | | |

Matrix Spike (3L22030-MS1)

Source: B3L0652-03

| | | | | | | | | | | |
|---------------------------|------|------|-----------|------|-----|------|--------|--|--|------|
| Diesel Range Hydrocarbons | 146 | 20.0 | mg/kg dry | 76.0 | 116 | 39.5 | 50-150 | | | Q-01 |
| Surrogate: 2-FBP | 12.8 | | " | 12.2 | | 105 | 50-150 | | | |

Matrix Spike Dup (3L22030-MSD1)

Source: B3L0652-03

| | | | | | | | | | | |
|---------------------------|------|------|-----------|------|-----|------|--------|------|----|--|
| Diesel Range Hydrocarbons | 177 | 20.0 | mg/kg dry | 76.0 | 116 | 80.3 | 50-150 | 19.2 | 40 | |
| Surrogate: 2-FBP | 12.6 | | " | 12.2 | | 103 | 50-150 | | | |

North Creek Analytical - Bothell

The results in this report apply to the samples analyzed in accordance with the chain of custody document. This analytical report must be reproduced in its entirety.

Kortland Orr, PM

North Creek Analytical, Inc.
 Environmental Laboratory Network

Page 28 of 50



Seattle 11720 North Creek Pkwy N, Suite 400, Bothell, WA 98011-8244
 425.420.9200 fax 425.420.9210
 Spokane East 11115 Montgomery, Suite B, Spokane, WA 99206-4776
 509.924.9200 fax 509.924.9290
 Portland 9405 SW Nimbus Avenue, Beaverton, OR 97008-7132
 503.906.9200 fax 503.906.9210
 Bend 20332 Empire Avenue, Suite F-1, Bend, OR 97701-5711
 541.383.9310 fax 541.382.7588
 Anchorage 2000 W International Airport Road, Suite A-10, Anchorage, AK 99502-1119
 907.563.9200 fax 907.563.9210

Geomatrix Consultants, Inc. - Seattle
 600 University Street, Suite 1020
 Seattle, WA 98101

Project: Anacortes A Avenue
 Project Number: 9156
 Project Manager: Kathleen Goodman

Reported:
 01/08/04 18:28

Total Metals by EPA 6000/7000 Series Methods - Quality Control
North Creek Analytical - Bothell

| Analyte | Result | Reporting Limit | Units | Spike Level | Source Result | %REC | %REC Limits | RPD | RPD Limit | Notes |
|---------|--------|-----------------|-------|-------------|---------------|------|-------------|-----|-----------|-------|
|---------|--------|-----------------|-------|-------------|---------------|------|-------------|-----|-----------|-------|

Batch 3L23012: Prepared 12/23/03 Using EPA 3020A

Blank (3L23012-BLK1)

| | | | | | | | | | | |
|-----------|----|---------|------|--|--|--|--|--|--|--|
| Aluminum | ND | 0.300 | mg/l | | | | | | | |
| Silver | ND | 0.00100 | " | | | | | | | |
| Chromium | ND | 0.00100 | " | | | | | | | |
| Copper | ND | 0.00100 | " | | | | | | | |
| Thallium | ND | 0.00100 | " | | | | | | | |
| Cadmium | ND | 0.00100 | " | | | | | | | |
| Selenium | ND | 0.00100 | " | | | | | | | |
| Arsenic | ND | 0.00100 | " | | | | | | | |
| Beryllium | ND | 0.00100 | " | | | | | | | |
| Zinc | ND | 0.0100 | " | | | | | | | |
| Antimony | ND | 0.00300 | " | | | | | | | |
| Nickel | ND | 0.00100 | " | | | | | | | |

LCS (3L23012-BS1)

| | | | | | | | | | | |
|-----------|--------|---------|------|--------|--|-----|--------|--|--|--|
| Thallium | 0.0828 | 0.00100 | mg/l | 0.0800 | | 104 | 80-120 | | | |
| Nickel | 0.0803 | 0.00100 | " | 0.0800 | | 100 | 80-120 | | | |
| Beryllium | 0.0812 | 0.00100 | " | 0.0800 | | 102 | 80-120 | | | |
| Aluminum | 5.91 | 0.300 | " | 5.00 | | 118 | 80-120 | | | |
| Antimony | 0.0844 | 0.00300 | " | 0.0800 | | 106 | 80-120 | | | |
| Copper | 0.0822 | 0.00100 | " | 0.0800 | | 103 | 80-120 | | | |
| Chromium | 0.0836 | 0.00100 | " | 0.0800 | | 104 | 80-120 | | | |
| Zinc | 0.0847 | 0.0100 | " | 0.0800 | | 106 | 80-120 | | | |
| Cadmium | 0.0822 | 0.00100 | " | 0.0800 | | 103 | 80-120 | | | |
| Silver | 0.0820 | 0.00100 | " | 0.0800 | | 102 | 80-120 | | | |
| Selenium | 0.0818 | 0.00100 | " | 0.0800 | | 102 | 80-120 | | | |
| Arsenic | 0.0837 | 0.00100 | " | 0.0800 | | 105 | 80-120 | | | |

LCS Dup (3L23012-BSD1)

| | | | | | | | | | | |
|-----------|--------|---------|------|--------|--|------|--------|-------|----|--|
| Antimony | 0.0832 | 0.00300 | mg/l | 0.0800 | | 104 | 80-120 | 1.43 | 20 | |
| Cadmium | 0.0816 | 0.00100 | " | 0.0800 | | 102 | 80-120 | 0.733 | 20 | |
| Selenium | 0.0780 | 0.00100 | " | 0.0800 | | 97.5 | 80-120 | 4.76 | 20 | |
| Thallium | 0.0829 | 0.00100 | " | 0.0800 | | 104 | 80-120 | 0.121 | 20 | |
| Beryllium | 0.0799 | 0.00100 | " | 0.0800 | | 99.9 | 80-120 | 1.61 | 20 | |
| Arsenic | 0.0834 | 0.00100 | " | 0.0800 | | 104 | 80-120 | 0.359 | 20 | |
| Chromium | 0.0845 | 0.00100 | " | 0.0800 | | 106 | 80-120 | 1.07 | 20 | |
| Copper | 0.0816 | 0.00100 | " | 0.0800 | | 102 | 80-120 | 0.733 | 20 | |

North Creek Analytical - Bothell

The results in this report apply to the samples analyzed in accordance with the chain of custody document. This analytical report must be reproduced in its entirety.

Kortland Orr, PM



Seattle 11720 North Creek Pkwy N, Suite 400, Bothell, WA 98011-8244
 425.420.9200 fax 425.420.9210
 Spokane East 11115 Montgomery, Suite B, Spokane, WA 99206-4776
 509.924.9200 fax 509.924.9290
 Portland 9405 SW Nimbus Avenue, Beaverton, OR 97008-7132
 503.906.9200 fax 503.906.9210
 Bend 20332 Empire Avenue, Suite F-1, Bend, OR 97701-5711
 541.383.9310 fax 541.382.7588
 Anchorage 2000 W International Airport Road, Suite A-10, Anchorage, AK 99502-1119
 907.563.9200 fax 907.563.9210

Geomatrix Consultants, Inc. - Seattle
 600 University Street, Suite 1020
 Seattle, WA 98101

Project: Anacortes A Avenue
 Project Number: 9156
 Project Manager: Kathleen Goodman

Reported:
 01/08/04 18:28

Total Metals by EPA 6000/7000 Series Methods - Quality Control
North Creek Analytical - Bothell

| Analyte | Result | Reporting Limit | Units | Spike Level | Source Result | %REC %REC | Limits | RPD | RPD Limit | Notes |
|---------|--------|-----------------|-------|-------------|---------------|-----------|--------|-----|-----------|-------|
|---------|--------|-----------------|-------|-------------|---------------|-----------|--------|-----|-----------|-------|

Batch 3L23012: Prepared 12/23/03 Using EPA 3020A

LCS Dup (3L23012-BSD1)

| | | | | | | | | | | |
|----------|--------|---------|------|--------|--|------|--------|------|----|--|
| Zinc | 0.0824 | 0.0100 | mg/l | 0.0800 | | 103 | 80-120 | 2.75 | 20 | |
| Nickel | 0.0794 | 0.00100 | " | 0.0800 | | 99.3 | 80-120 | 1.13 | 20 | |
| Aluminum | 5.79 | 0.300 | " | 5.00 | | 116 | 80-120 | 2.05 | 20 | |
| Silver | 0.0802 | 0.00100 | " | 0.0800 | | 100 | 80-120 | 2.22 | 20 | |

Matrix Spike (3L23012-MS1)

Source: B3L0652-06

| | | | | | | | | | | |
|-----------|--------|---------|------|--------|----------|------|--------|--|--|--|
| Beryllium | 0.0799 | 0.00100 | mg/l | 0.0800 | 0.000109 | 99.7 | 75-125 | | | |
| Cadmium | 0.0802 | 0.00100 | " | 0.0800 | 0.00112 | 98.8 | 75-125 | | | |
| Zinc | 0.317 | 0.0100 | " | 0.0800 | 0.254 | 78.7 | 75-131 | | | |
| Copper | 0.134 | 0.00100 | " | 0.0800 | 0.0623 | 89.6 | 70-124 | | | |
| Chromium | 0.0833 | 0.00100 | " | 0.0800 | 0.00452 | 98.5 | 75-125 | | | |
| Arsenic | 0.0843 | 0.00100 | " | 0.0800 | 0.00171 | 103 | 75-125 | | | |
| Antimony | 0.0848 | 0.00300 | " | 0.0800 | 0.00216 | 103 | 78-125 | | | |
| Thallium | 0.0847 | 0.00100 | " | 0.0800 | ND | 106 | 75-125 | | | |
| Nickel | 0.0848 | 0.00100 | " | 0.0800 | 0.0137 | 88.9 | 76-125 | | | |
| Aluminum | 7.45 | 0.300 | " | 5.00 | 1.85 | 112 | 75-125 | | | |
| Selenium | 0.0830 | 0.00100 | " | 0.0800 | 0.00358 | 99.3 | 76-128 | | | |
| Silver | 0.0640 | 0.00100 | " | 0.0800 | 0.000669 | 79.2 | 21-136 | | | |

Matrix Spike Dup (3L23012-MSD1)

Source: B3L0652-06

| | | | | | | | | | | |
|-----------|--------|---------|------|--------|----------|------|--------|-------|----|--|
| Beryllium | 0.0807 | 0.00100 | mg/l | 0.0800 | 0.000109 | 101 | 75-125 | 0.996 | 20 | |
| Cadmium | 0.0833 | 0.00100 | " | 0.0800 | 0.00112 | 103 | 75-125 | 3.79 | 20 | |
| Thallium | 0.0878 | 0.00100 | " | 0.0800 | ND | 110 | 75-125 | 3.59 | 20 | |
| Antimony | 0.0860 | 0.00300 | " | 0.0800 | 0.00216 | 105 | 78-125 | 1.41 | 20 | |
| Aluminum | 7.70 | 0.300 | " | 5.00 | 1.85 | 117 | 75-125 | 3.30 | 20 | |
| Nickel | 0.0888 | 0.00100 | " | 0.0800 | 0.0137 | 93.9 | 76-125 | 4.61 | 20 | |
| Copper | 0.136 | 0.00100 | " | 0.0800 | 0.0623 | 92.1 | 70-124 | 1.48 | 20 | |
| Arsenic | 0.0862 | 0.00100 | " | 0.0800 | 0.00171 | 106 | 75-125 | 2.23 | 20 | |
| Chromium | 0.0846 | 0.00100 | " | 0.0800 | 0.00452 | 100 | 75-125 | 1.55 | 20 | |
| Silver | 0.0502 | 0.00100 | " | 0.0800 | 0.000669 | 61.9 | 21-136 | 24.2 | 50 | |
| Zinc | 0.322 | 0.0100 | " | 0.0800 | 0.254 | 85.0 | 75-131 | 1.56 | 20 | |
| Selenium | 0.0817 | 0.00100 | " | 0.0800 | 0.00358 | 97.6 | 76-128 | 1.58 | 20 | |

North Creek Analytical - Bothell

The results in this report apply to the samples analyzed in accordance with the chain of custody document. This analytical report must be reproduced in its entirety.

Kortland Orr, PM



Seattle 11720 North Creek Pkwy N, Suite 400, Bothell, WA 98011-8244
 425.420.9200 fax 425.420.9210
 Spokane East 11115 Montgomery, Suite B, Spokane, WA 99206-4776
 509.924.9200 fax 509.924.9290
 Portland 9405 SW Nimbus Avenue, Beaverton, OR 97008-7132
 503.906.9200 fax 503.906.9210
 Bend 20332 Empire Avenue, Suite F-1, Bend, OR 97701-5711
 541.383.9310 fax 541.382.7588
 Anchorage 2000 W International Airport Road, Suite A-10, Anchorage, AK 99502-1119
 907.563.9200 fax 907.563.9210

Geomatrix Consultants, Inc. - Seattle
 600 University Street, Suite 1020
 Seattle, WA 98101

Project: Anacortes A Avenue
 Project Number: 9156
 Project Manager: Kathleen Goodman

Reported:
 01/08/04 18:28

Total Metals by EPA 6000/7000 Series Methods - Quality Control
North Creek Analytical - Bothell

| Analyte | Result | Reporting Limit | Units | Spike Level | Source Result | %REC | %REC Limits | RPD | RPD Limit | Notes |
|---------|--------|-----------------|-------|-------------|---------------|------|-------------|-----|-----------|-------|
|---------|--------|-----------------|-------|-------------|---------------|------|-------------|-----|-----------|-------|

Batch 3L23012: Prepared 12/23/03 Using EPA 3020A

| Source: B3L0652-06 | | | | | | | | | | |
|--------------------------|--------|---------|------|--------|----------|------|--------|--|--|--|
| Post Spike (3L23012-PS1) | | | | | | | | | | |
| Nickel | 0.108 | 0.00100 | mg/l | 0.100 | 0.0137 | 94.3 | 75-125 | | | |
| Antimony | 0.0539 | 0.00300 | " | 0.0500 | 0.00216 | 103 | 75-125 | | | |
| Cadmium | 0.101 | 0.00100 | " | 0.100 | 0.00112 | 99.9 | 75-125 | | | |
| Selenium | 0.102 | 0.00100 | " | 0.100 | 0.00358 | 98.4 | 75-125 | | | |
| Silver | 0.0897 | 0.00100 | " | 0.100 | 0.000669 | 89.0 | 75-125 | | | |
| Thallium | 0.108 | 0.00100 | " | 0.100 | ND | 108 | 75-125 | | | |
| Beryllium | 0.0969 | 0.00100 | " | 0.100 | 0.000109 | 96.8 | 75-125 | | | |
| Arsenic | 0.105 | 0.00100 | " | 0.100 | 0.00171 | 103 | 75-125 | | | |
| Chromium | 0.103 | 0.00100 | " | 0.100 | 0.00452 | 98.5 | 75-125 | | | |
| Copper | 0.157 | 0.00100 | " | 0.100 | 0.0623 | 94.7 | 75-125 | | | |
| Zinc | 0.348 | 0.0100 | " | 0.100 | 0.254 | 94.0 | 75-125 | | | |

Batch 3L23034: Prepared 12/23/03 Using EPA 7471A

| | | | | | | | | | | |
|---------------------------------|-------|-------|-----------|-------|--------|-----|--------|------|----|--|
| Blank (3L23034-BLK1) | | | | | | | | | | |
| Mercury | ND | 0.100 | mg/kg | | | | | | | |
| LCS (3L23034-BS1) | | | | | | | | | | |
| Mercury | 0.511 | 0.100 | mg/kg | 0.500 | | 102 | 80-120 | | | |
| LCS Dup (3L23034-BSD1) | | | | | | | | | | |
| Mercury | 0.496 | 0.100 | mg/kg | 0.481 | | 103 | 80-120 | 2.98 | 20 | |
| Matrix Spike (3L23034-MS1) | | | | | | | | | | |
| Mercury | 0.629 | 0.100 | mg/kg dry | 0.548 | 0.0455 | 106 | 70-130 | | | |
| Matrix Spike Dup (3L23034-MSD1) | | | | | | | | | | |
| Mercury | 0.611 | 0.100 | mg/kg dry | 0.548 | 0.0455 | 103 | 70-130 | 2.90 | 30 | |

North Creek Analytical - Bothell

The results in this report apply to the samples analyzed in accordance with the chain of custody document. This analytical report must be reproduced in its entirety.

Kortland Orr, PM



Seattle 11720 North Creek Pkwy N, Suite 400, Bothell, WA 98011-8244
 425.420.9200 fax 425.420.9210
 Spokane East 11115 Montgomery, Suite B, Spokane, WA 99206-4776
 509.924.9200 fax 509.924.9290
 Portland 9405 SW Nimbus Avenue, Beaverton, OR 97008-7132
 503.906.9200 fax 503.906.9210
 Bend 20332 Empire Avenue, Suite F-1, Bend, OR 97701-5711
 541.383.9310 fax 541.382.7588
 Anchorage 2000 W International Airport Road, Suite A-10, Anchorage, AK 99502-1119
 907.563.9200 fax 907.563.9210

Geomatrix Consultants, Inc. - Seattle Project: Anacortes A Avenue
 600 University Street, Suite 1020 Project Number: 9156
 Seattle, WA 98101 Project Manager: Kathleen Goodman Reported: 01/08/04 18:28

Total Metals by EPA 6000/7000 Series Methods - Quality Control
North Creek Analytical - Bothell

| Analyte | Result | Reporting Limit | Units | Spike Level | Source Result | %REC | %REC Limits | RPD | RPD Limit | Notes |
|---------|--------|-----------------|-------|-------------|---------------|------|-------------|-----|-----------|-------|
|---------|--------|-----------------|-------|-------------|---------------|------|-------------|-----|-----------|-------|

Batch 3L23036: Prepared 12/23/03 Using EPA 3010A

Blank (3L23036-BLK1)

| | | | | | | | | | | |
|-----------|----|--------|------|--|--|--|--|--|--|--|
| Sodium | ND | 0.250 | mg/l | | | | | | | |
| Manganese | ND | 0.0100 | " | | | | | | | |
| Magnesium | ND | 0.500 | " | | | | | | | |
| Iron | ND | 0.150 | " | | | | | | | |
| Calcium | ND | 0.250 | " | | | | | | | |

LCS (3L23036-BS1)

| | | | | | | | | | | |
|-----------|------|--------|------|------|--|-----|--------|--|--|--|
| Manganese | 5.23 | 0.0100 | mg/l | 5.00 | | 105 | 80-120 | | | |
| Sodium | 5.07 | 0.250 | " | 5.00 | | 101 | 80-120 | | | |
| Calcium | 5.14 | 0.250 | " | 5.00 | | 103 | 80-120 | | | |
| Iron | 5.11 | 0.150 | " | 5.00 | | 102 | 80-120 | | | |
| Magnesium | 5.20 | 0.500 | " | 5.00 | | 104 | 80-120 | | | |

LCS Dup (3L23036-BSD1)

| | | | | | | | | | | |
|-----------|------|--------|------|------|--|-----|--------|-------|----|--|
| Iron | 5.10 | 0.150 | mg/l | 5.00 | | 102 | 80-120 | 0.196 | 20 | |
| Magnesium | 5.20 | 0.500 | " | 5.00 | | 104 | 80-120 | 0.00 | 20 | |
| Calcium | 5.10 | 0.250 | " | 5.00 | | 102 | 80-120 | 0.781 | 20 | |
| Manganese | 5.23 | 0.0100 | " | 5.00 | | 105 | 80-120 | 0.00 | 20 | |
| Sodium | 5.07 | 0.250 | " | 5.00 | | 101 | 80-120 | 0.00 | 20 | |

Matrix Spike (3L23036-MS1)

Source: B3L0652-06

| | | | | | | | | | | |
|-----------|------|--------|------|------|-------|------|--------|--|--|------|
| Manganese | 5.50 | 0.0100 | mg/l | 5.00 | 0.203 | 106 | 75-125 | | | |
| Magnesium | 43.8 | 0.500 | " | 5.00 | 36.1 | 154 | 80-120 | | | Q-03 |
| Sodium | 58.7 | 0.250 | " | 5.00 | 48.5 | 204 | 75-125 | | | Q-03 |
| Iron | 29.1 | 0.150 | " | 5.00 | 24.4 | 94.0 | 75-125 | | | Q-15 |
| Calcium | 83.8 | 0.250 | " | 5.00 | 77.8 | 120 | 75-125 | | | Q-15 |

Matrix Spike Dup (3L23036-MSD1)

Source: B3L0652-06

| | | | | | | | | | | |
|-----------|------|--------|------|------|-------|------|--------|------|----|------|
| Manganese | 5.41 | 0.0100 | mg/l | 5.00 | 0.203 | 104 | 75-125 | 1.65 | 20 | |
| Sodium | 56.8 | 0.250 | " | 5.00 | 48.5 | 166 | 75-125 | 3.29 | 20 | Q-03 |
| Magnesium | 42.4 | 0.500 | " | 5.00 | 36.1 | 126 | 80-120 | 3.25 | 20 | Q-03 |
| Iron | 28.5 | 0.150 | " | 5.00 | 24.4 | 82.0 | 75-125 | 2.08 | 20 | Q-15 |
| Calcium | 81.0 | 0.250 | " | 5.00 | 77.8 | 64.0 | 75-125 | 3.40 | 20 | Q-15 |

North Creek Analytical - Bothell

The results in this report apply to the samples analyzed in accordance with the chain of custody document. This analytical report must be reproduced in its entirety.

Kortland Orr, PM



Seattle 11720 North Creek Pkwy N, Suite 400, Bothell, WA 98011-8244
 425.420.9200 fax 425.420.9210
 Spokane East 11115 Montgomery, Suite B, Spokane, WA 99206-4776
 509.924.9200 fax 509.924.9290
 Portland 9405 SW Himbus Avenue, Beaverton, OR 97008-7132
 503.906.9200 fax 503.906.9210
 Bend 20332 Empire Avenue, Suite F-1, Bend, OR 97701-5711
 541.383.9310 fax 541.382.7588
 Anchorage 2000 W International Airport Road, Suite A-10, Anchorage, AK 99502-1119
 907.563.9200 fax 907.563.9210

Geomatrix Consultants, Inc. - Seattle
 600 University Street, Suite 1020
 Seattle, WA 98101

Project: Anacortes A Avenue
 Project Number: 9156
 Project Manager: Kathleen Goodman

Reported:
 01/08/04 18:28

**Total Metals by EPA 6000/7000 Series Methods - Quality Control
 North Creek Analytical - Bothell**

| Analyte | Result | Reporting Limit | Units | Spike Level | Source Result | %REC | %REC Limits | RPD | RPD Limit | Notes |
|---------|--------|-----------------|-------|-------------|---------------|------|-------------|-----|-----------|-------|
|---------|--------|-----------------|-------|-------------|---------------|------|-------------|-----|-----------|-------|

Batch 3L23036: Prepared 12/23/03 Using EPA 3010A

Post Spike (3L23036-PS1)

Source: B3L0652-06

| | | | | | | | | | | |
|---------|------|--|------|------|------|------|--------|--|--|------|
| Calcium | 78.4 | | mg/l | 5.00 | 77.8 | 12.0 | 75-125 | | | Q-15 |
| Iron | 30.1 | | " | 5.00 | 24.4 | 114 | 75-125 | | | |

Batch 3L24019: Prepared 12/24/03 Using EPA 7470A

Blank (3L24019-BLK1)

| | | | | | | | | | | |
|---------|----|----------|------|--|--|--|--|--|--|--|
| Mercury | ND | 0.000200 | mg/l | | | | | | | |
|---------|----|----------|------|--|--|--|--|--|--|--|

LCS (3L24019-BS1)

| | | | | | | | | | | |
|---------|---------|----------|------|---------|--|-----|--------|--|--|--|
| Mercury | 0.00569 | 0.000200 | mg/l | 0.00500 | | 114 | 80-120 | | | |
|---------|---------|----------|------|---------|--|-----|--------|--|--|--|

LCS Dup (3L24019-BSD1)

| | | | | | | | | | | |
|---------|---------|----------|------|---------|--|-----|--------|------|----|--|
| Mercury | 0.00558 | 0.000200 | mg/l | 0.00500 | | 112 | 80-120 | 1.95 | 20 | |
|---------|---------|----------|------|---------|--|-----|--------|------|----|--|

Matrix Spike (3L24019-MS1)

Source: B3L0639-02

| | | | | | | | | | | |
|---------|---------|----------|------|---------|----------|------|--------|--|--|--|
| Mercury | 0.00492 | 0.000200 | mg/l | 0.00500 | 0.000145 | 95.5 | 73-121 | | | |
|---------|---------|----------|------|---------|----------|------|--------|--|--|--|

Matrix Spike Dup (3L24019-MSD1)

Source: B3L0639-02

| | | | | | | | | | | |
|---------|---------|----------|------|---------|----------|------|--------|------|----|--|
| Mercury | 0.00481 | 0.000200 | mg/l | 0.00500 | 0.000145 | 93.3 | 73-121 | 2.26 | 20 | |
|---------|---------|----------|------|---------|----------|------|--------|------|----|--|

Batch 3L29033: Prepared 12/29/03 Using EPA 3050B

Blank (3L29033-BLK1)

| | | | | | | | | | | |
|-----------|----|-------|-------|--|--|--|--|--|--|--|
| Antimony | ND | 1.50 | mg/kg | | | | | | | |
| Nickel | ND | 0.500 | " | | | | | | | |
| Selenium | ND | 0.500 | " | | | | | | | |
| Chromium | ND | 0.500 | " | | | | | | | |
| Arsenic | ND | 0.500 | " | | | | | | | |
| Thallium | ND | 0.500 | " | | | | | | | |
| Copper | ND | 0.500 | " | | | | | | | |
| Cadmium | ND | 0.500 | " | | | | | | | |
| Aluminum | ND | 100 | " | | | | | | | |
| Silver | ND | 0.500 | " | | | | | | | |
| Beryllium | ND | 0.500 | " | | | | | | | |
| Zinc | ND | 5.00 | " | | | | | | | |

North Creek Analytical - Bothell

The results in this report apply to the samples analyzed in accordance with the chain of custody document. This analytical report must be reproduced in its entirety.

Kortland Orr, PM



Seattle 11720 North Creek Pkwy N, Suite 400, Bothell, WA 98011-8244
 425.420.9200 fax 425.420.9210
 Spokane East 11115 Montgomery, Suite B, Spokane, WA 99206-4776
 509.924.9200 fax 509.924.9290
 Portland 9405 SW Nimbus Avenue, Beaverton, OR 97008-7132
 503.906.9200 fax 503.906.9210
 Bend 20332 Empire Avenue, Suite F-1, Bend, OR 97701-5711
 541.383.9310 fax 541.382.7588
 Anchorage 2000 W International Airport Road, Suite A-10, Anchorage, AK 99502-1119
 907.563.9200 fax 907.563.9210

Geomatrix Consultants, Inc. - Seattle
 600 University Street, Suite 1020
 Seattle, WA 98101

Project: Anacortes A Avenue
 Project Number: 9156
 Project Manager: Kathleen Goodman

Reported:
 01/08/04 18:28

Total Metals by EPA 6000/7000 Series Methods - Quality Control
North Creek Analytical - Bothell

| Analyte | Result | Reporting Limit | Units | Spike Level | Source Result | %REC | %REC Limits | RPD | RPD Limit | Notes |
|---------|--------|-----------------|-------|-------------|---------------|------|-------------|-----|-----------|-------|
|---------|--------|-----------------|-------|-------------|---------------|------|-------------|-----|-----------|-------|

Batch 3L29033: Prepared 12/29/03 Using EPA 3050B

LCS (3L29033-BS1)

| | | | | | | | | | | |
|-----------|------|-------|-------|------|--|------|--------|--|--|--|
| Chromium | 39.8 | 0.500 | mg/kg | 40.0 | | 99.5 | 80-120 | | | |
| Beryllium | 43.1 | 0.500 | " | 40.0 | | 108 | 80-120 | | | |
| Silver | 40.6 | 0.500 | " | 40.0 | | 102 | 80-120 | | | |
| Cadmium | 38.8 | 0.500 | " | 40.0 | | 97.0 | 80-120 | | | |
| Arsenic | 39.8 | 0.500 | " | 40.0 | | 99.5 | 80-120 | | | |
| Zinc | 41.1 | 5.00 | " | 40.0 | | 103 | 80-120 | | | |
| Thallium | 44.4 | 0.500 | " | 40.0 | | 111 | 80-120 | | | |
| Selenium | 37.5 | 0.500 | " | 40.0 | | 93.8 | 80-120 | | | |
| Antimony | 40.1 | 1.50 | " | 40.0 | | 100 | 80-120 | | | |
| Nickel | 38.7 | 0.500 | " | 40.0 | | 96.8 | 80-120 | | | |
| Copper | 42.9 | 0.500 | " | 40.0 | | 107 | 80-120 | | | |
| Aluminum | 1070 | 100 | " | 1000 | | 107 | 80-120 | | | |

LCS Dup (3L29033-BSD1)

| | | | | | | | | | | |
|-----------|------|-------|-------|------|--|------|--------|-------|----|--|
| Nickel | 40.7 | 0.500 | mg/kg | 40.0 | | 102 | 80-120 | 5.04 | 20 | |
| Chromium | 41.1 | 0.500 | " | 40.0 | | 103 | 80-120 | 3.21 | 20 | |
| Arsenic | 40.3 | 0.500 | " | 40.0 | | 101 | 80-120 | 1.25 | 20 | |
| Selenium | 38.2 | 0.500 | " | 40.0 | | 95.5 | 80-120 | 1.85 | 20 | |
| Thallium | 43.8 | 0.500 | " | 40.0 | | 110 | 80-120 | 1.36 | 20 | |
| Zinc | 40.1 | 5.00 | " | 40.0 | | 100 | 80-120 | 2.46 | 20 | |
| Copper | 42.8 | 0.500 | " | 40.0 | | 107 | 80-120 | 0.233 | 20 | |
| Aluminum | 1070 | 100 | " | 1000 | | 107 | 80-120 | 0.00 | 20 | |
| Silver | 40.9 | 0.500 | " | 40.0 | | 102 | 80-120 | 0.736 | 20 | |
| Beryllium | 42.8 | 0.500 | " | 40.0 | | 107 | 80-120 | 0.698 | 20 | |
| Antimony | 40.6 | 1.50 | " | 40.0 | | 102 | 80-120 | 1.24 | 20 | |
| Cadmium | 38.9 | 0.500 | " | 40.0 | | 97.2 | 80-120 | 0.257 | 20 | |

Matrix Spike (3L29033-MS1)

Source: B3L0652-03

| | | | | | | | | | | |
|-----------|------|-------|-----------|------|--------|------|--------|--|--|------|
| Beryllium | 47.8 | 0.500 | mg/kg dry | 45.6 | 0.246 | 104 | 73-127 | | | |
| Copper | 80.6 | 0.500 | " | 45.6 | 28.9 | 113 | 59-136 | | | |
| Silver | 42.0 | 0.500 | " | 45.6 | ND | 92.1 | 63-125 | | | |
| Zinc | 112 | 5.00 | " | 45.6 | 68.2 | 96.1 | 65-136 | | | |
| Cadmium | 42.8 | 0.500 | " | 45.6 | 0.457 | 92.9 | 70-130 | | | |
| Chromium | 92.2 | 0.500 | " | 45.6 | 34.9 | 126 | 53-147 | | | |
| Nickel | 100 | 0.500 | " | 45.6 | 50.7 | 108 | 67-130 | | | |
| Antimony | 3.37 | 1.50 | " | 45.6 | 0.0222 | 7.34 | 20-130 | | | Q-13 |

North Creek Analytical - Bothell

The results in this report apply to the samples analyzed in accordance with the chain of custody document. This analytical report must be reproduced in its entirety.

Kortland Orr, PM



Seattle 11720 North Creek Pkwy N, Suite 400, Bothell, WA 98011-8244
 425.420.9200 fax 425.420.9210
 Spokane East 11115 Montgomery, Suite B, Spokane, WA 99206-4776
 509.924.9200 fax 509.924.9290
 Portland 9405 SW Nimbus Avenue, Beaverton, OR 97008-7132
 503.906.9200 fax 503.906.9210
 Bend 20332 Emple Avenue, Suite F-1, Bend, OR 97701-5711
 541.383.9310 fax 541.382.7588
 Anchorage 2000 W International Airport Road, Suite A-10, Anchorage, AK 99502-1119
 907.563.9200 fax 907.563.9210

Geomatrix Consultants, Inc. - Seattle
 600 University Street, Suite 1020
 Seattle, WA 98101

Project: Anacortes A Avenue
 Project Number: 9156
 Project Manager: Kathleen Goodman

Reported:
 01/08/04 18:28

Total Metals by EPA 6000/7000 Series Methods - Quality Control
North Creek Analytical - Bothell

| Analyte | Result | Reporting Limit | Units | Spike Level | Source Result | %REC %REC | Limit | RPD | RPD Limit | Notes |
|---|--------|-----------------|-----------|---------------------------|---------------|-----------|--------|-------|-----------|-------|
| Batch 3L29033: Prepared 12/29/03 Using EPA 3050B | | | | | | | | | | |
| Matrix Spike (3L29033-MS1) | | | | Source: B3L0652-03 | | | | | | |
| Selenium | 38.9 | 0.500 | mg/kg dry | 45.6 | 0.298 | 84.7 | 70-130 | | | |
| Thallium | 50.6 | 0.500 | " | 45.6 | 0.0433 | 111 | 58-130 | | | |
| Aluminum | 17800 | 1000 | " | 1140 | 13500 | 377 | 70-130 | | | Q-15 |
| Arsenic | 44.1 | 0.500 | " | 45.6 | 3.22 | 89.6 | 72-130 | | | |
| Matrix Spike Dup (3L29033-MSD1) | | | | Source: B3L0652-03 | | | | | | |
| Arsenic | 44.3 | 0.500 | mg/kg dry | 45.6 | 3.22 | 90.1 | 72-130 | 0.452 | 30 | |
| Cadmium | 43.6 | 0.500 | " | 45.6 | 0.457 | 94.6 | 70-130 | 1.85 | 30 | |
| Beryllium | 46.5 | 0.500 | " | 45.6 | 0.246 | 101 | 73-127 | 2.76 | 30 | |
| Aluminum | 17500 | 1000 | " | 1140 | 13500 | 351 | 70-130 | 1.70 | 20 | Q-15 |
| Chromium | 81.3 | 0.500 | " | 45.6 | 34.9 | 102 | 53-147 | 12.6 | 30 | |
| Copper | 73.6 | 0.500 | " | 45.6 | 28.9 | 98.0 | 59-136 | 9.08 | 30 | |
| Zinc | 131 | 5.00 | " | 45.6 | 68.2 | 138 | 65-136 | 15.6 | 30 | Q-01 |
| Selenium | 38.8 | 0.500 | " | 45.6 | 0.298 | 84.4 | 70-130 | 0.257 | 30 | |
| Silver | 42.6 | 0.500 | " | 45.6 | ND | 93.4 | 63-125 | 1.42 | 50 | |
| Thallium | 51.6 | 0.500 | " | 45.6 | 0.0433 | 113 | 58-130 | 1.96 | 30 | |
| Nickel | 91.7 | 0.500 | " | 45.6 | 50.7 | 89.9 | 67-130 | 8.66 | 30 | |
| Antimony | 3.79 | 1.50 | " | 45.6 | 0.0222 | 8.26 | 20-130 | 11.7 | 30 | Q-13 |
| Post Spike (3L29033-PS1) | | | | Source: B3L0652-03 | | | | | | |
| Arsenic | 54.8 | 0.500 | mg/kg dry | 57.0 | 3.22 | 90.5 | 75-125 | | | |
| Selenium | 49.7 | 0.500 | " | 57.0 | 0.298 | 86.7 | 75-125 | | | |
| Antimony | 27.1 | 1.50 | " | 28.5 | 0.0222 | 95.0 | 75-125 | | | |
| Cadmium | 54.2 | 0.500 | " | 57.0 | 0.457 | 94.3 | 75-125 | | | |
| Silver | 53.7 | 0.500 | " | 57.0 | ND | 94.2 | 75-125 | | | |
| Thallium | 63.6 | 0.500 | " | 57.0 | 0.0433 | 112 | 75-125 | | | |
| Zinc | 116 | 5.00 | " | 57.0 | 68.2 | 83.9 | 75-125 | | | |
| Copper | 79.6 | 0.500 | " | 57.0 | 28.9 | 88.9 | 75-125 | | | |

North Creek Analytical - Bothell

The results in this report apply to the samples analyzed in accordance with the chain of custody document. This analytical report must be reproduced in its entirety.

Kortland Orr, PM

North Creek Analytical, Inc.
 Environmental Laboratory Network



Seattle 11720 North Creek Pkwy N, Suite 400, Bothell, WA 98011-8244
 425.420.9200 fax 425.420.9210
 Spokane East 11115 Montgomery, Suite B, Spokane, WA 99206-4776
 509.924.9200 fax 509.924.9290
 Portland 9405 SW Nimbus Avenue, Beaverton, OR 97008-7132
 503.906.9200 fax 503.906.9210
 Bend 20332 Empire Avenue, Suite F-1, Bend, OR 97701-5711
 541.383.9310 fax 541.382.7588
 Anchorage 2000 W International Airport Road, Suite A-10, Anchorage, AK 99502-1119
 907.563.9200 fax 907.563.9210

Geomatrix Consultants, Inc. - Seattle
 600 University Street, Suite 1020
 Seattle, WA 98101

Project: Anacortes A Avenue
 Project Number: 9156
 Project Manager: Kathleen Goodman

Reported:
 01/08/04 18:28

Total Metals by EPA 6000/7000 Series Methods - Quality Control
North Creek Analytical - Bothell

| Analyte | Result | Reporting Limit | Units | Spike Level | Source Result | %REC | %REC Limits | RPD | RPD Limit | Notes |
|---------|--------|-----------------|-------|-------------|---------------|------|-------------|-----|-----------|-------|
|---------|--------|-----------------|-------|-------------|---------------|------|-------------|-----|-----------|-------|

Batch 3L29033: Prepared 12/29/03 Using EPA 3050B

Post Spike (3L29033-PS2)

Source: B3L0652-03

| | | | | | | | | | | |
|-----------|-------|--|-----------|-------|----------|------|--------|--|--|--|
| Beryllium | 0.210 | | mg/kg dry | 0.200 | 0.000431 | 105 | 75-125 | | | |
| Chromium | 0.257 | | " | 0.200 | 0.0612 | 97.9 | 75-125 | | | |
| Nickel | 0.278 | | " | 0.200 | 0.0889 | 94.6 | 75-125 | | | |

North Creek Analytical - Bothell

The results in this report apply to the samples analyzed in accordance with the chain of custody document. This analytical report must be reproduced in its entirety.

Kortland Orr, PM

North Creek Analytical, Inc.
 Environmental Laboratory Network

Page 36 of 50



Seattle 11720 North Creek Pkwy N, Suite 400, Bothell, WA 98011-8244
 425.420.9200 fax 425.420.9210
 Spokane East 11115 Montgomery, Suite B, Spokane, WA 99206-4776
 509.924.9200 fax 509.924.9290
 Portland 9405 SW Nimbus Avenue, Beaverton, OR 97008-7132
 503.906.9200 fax 503.906.9210
 Bend 20332 Empire Avenue, Suite F-1, Bend, OR 97701-5711
 541.383.9310 fax 541.382.7588
 Anchorage 2000 W International Airport Road, Suite A-10, Anchorage, AK 99502-1119
 907.563.9200 fax 907.563.9210

Geomatrix Consultants, Inc. - Seattle
 600 University Street, Suite 1020
 Seattle, WA 98101

Project: Anacortes A Avenue
 Project Number: 9156
 Project Manager: Kathleen Goodman

Reported:
 01/08/04 18:28

Volatile Organic Compounds by EPA Method 8260B - Quality Control
North Creek Analytical - Bothell

| Analyte | Result | Reporting Limit | Units | Spike Level | Source Result | %REC | %REC Limits | RPD | RPD Limit | Notes |
|---------|--------|-----------------|-------|-------------|---------------|------|-------------|-----|-----------|-------|
|---------|--------|-----------------|-------|-------------|---------------|------|-------------|-----|-----------|-------|

Batch 3L23013: Prepared 12/22/03 Using EPA 5030B

Blank (3L23013-BLK1)

| | | | | | | | | | | |
|-----------------------------|----|-------|------|--|--|--|--|--|--|--|
| 1,1,1,2-Tetrachloroethane | ND | 0.200 | ug/l | | | | | | | |
| 1,1,1-Trichloroethane | ND | 0.200 | " | | | | | | | |
| 1,1,2,2-Tetrachloroethane | ND | 0.500 | " | | | | | | | |
| 1,1,2-Trichloroethane | ND | 0.200 | " | | | | | | | |
| 1,1-Dichloroethane | ND | 0.200 | " | | | | | | | |
| 1,1-Dichloroethene | ND | 0.200 | " | | | | | | | |
| 1,1-Dichloropropene | ND | 0.200 | " | | | | | | | |
| 1,2,3-Trichlorobenzene | ND | 0.200 | " | | | | | | | |
| 1,2,3-Trichloropropane | ND | 0.500 | " | | | | | | | |
| 1,2,4-Trichlorobenzene | ND | 0.200 | " | | | | | | | |
| 1,2,4-Trimethylbenzene | ND | 0.200 | " | | | | | | | |
| 1,2-Dibromo-3-chloropropane | ND | 0.500 | " | | | | | | | |
| 1,2-Dibromoethane | ND | 0.200 | " | | | | | | | |
| 1,2-Dichlorobenzene | ND | 0.200 | " | | | | | | | |
| 1,2-Dichloroethane | ND | 0.200 | " | | | | | | | |
| 1,2-Dichloropropane | ND | 0.200 | " | | | | | | | |
| 1,3,5-Trimethylbenzene | ND | 0.500 | " | | | | | | | |
| 1,3-Dichlorobenzene | ND | 0.200 | " | | | | | | | |
| 1,3-Dichloropropane | ND | 0.200 | " | | | | | | | |
| 1,4-Dichlorobenzene | ND | 0.200 | " | | | | | | | |
| 2,2-Dichloropropane | ND | 0.500 | " | | | | | | | |
| 2-Butanone | ND | 2.00 | " | | | | | | | |
| 2-Chlorotoluene | ND | 0.500 | " | | | | | | | |
| 2-Hexanone | ND | 2.00 | " | | | | | | | |
| 4-Chlorotoluene | ND | 0.500 | " | | | | | | | |
| 4-Methyl-2-pentanone | ND | 2.00 | " | | | | | | | |
| Acetone | ND | 10.0 | " | | | | | | | |
| Benzene | ND | 0.200 | " | | | | | | | |
| Bromobenzene | ND | 0.500 | " | | | | | | | |
| Bromochloromethane | ND | 0.200 | " | | | | | | | |
| Bromodichloromethane | ND | 0.200 | " | | | | | | | |
| Bromoform | ND | 0.200 | " | | | | | | | |
| Bromomethane | ND | 2.00 | " | | | | | | | |
| Carbon disulfide | ND | 0.500 | " | | | | | | | |
| Carbon tetrachloride | ND | 0.200 | " | | | | | | | |

North Creek Analytical - Bothell

The results in this report apply to the samples analyzed in accordance with the chain of custody document. This analytical report must be reproduced in its entirety.

Kortland Orr, PM



Seattle 11720 North Creek Pkwy N, Suite 400, Bothell, WA 98011-8244
 425.420.9200 fax 425.420.9210
 Spokane East 11115 Montgomery, Suite B, Spokane, WA 99206-4776
 509.924.9200 fax 509.924.9290
 Portland 9405 SW Nimbus Avenue, Beaverton, OR 97008-7132
 503.906.9200 fax 503.906.9210
 Bend 20332 Empire Avenue, Suite F-1, Bend, OR 97701-5711
 541.383.9310 fax 541.382.7588
 Anchorage 2000 W International Airport Road, Suite A-10, Anchorage, AK 99502-1119
 907.563.9200 fax 907.563.9210

Geomatrix Consultants, Inc. - Seattle
 600 University Street, Suite 1020
 Seattle, WA 98101

Project: Anacortes A Avenue
 Project Number: 9156
 Project Manager: Kathleen Goodman

Reported:
 01/08/04 18:28

Volatile Organic Compounds by EPA Method 8260B - Quality Control
North Creek Analytical - Bothell

| Analyte | Result | Reporting Limit | Units | Spike Level | Source Result | %REC | %REC Limits | RPD | RPD Limit | Notes |
|---------|--------|-----------------|-------|-------------|---------------|------|-------------|-----|-----------|-------|
|---------|--------|-----------------|-------|-------------|---------------|------|-------------|-----|-----------|-------|

Batch 3L23013: Prepared 12/22/03 Using EPA 5030B

Blank (3L23013-BLK1)

| | | | | | | | | | | |
|---------------------------|------|-------|------|------|--|------|--------|--|--|--|
| Chlorobenzene | ND | 0.200 | ug/l | | | | | | | |
| Chloroethane | ND | 1.00 | " | | | | | | | |
| Chloroform | ND | 0.200 | " | | | | | | | |
| Chloromethane | ND | 1.00 | " | | | | | | | |
| cis-1,2-Dichloroethene | ND | 0.200 | " | | | | | | | |
| cis-1,3-Dichloropropene | ND | 0.200 | " | | | | | | | |
| Dibromochloromethane | ND | 0.200 | " | | | | | | | |
| Dibromomethane | ND | 0.200 | " | | | | | | | |
| Dichlorodifluoromethane | ND | 0.500 | " | | | | | | | |
| Ethylbenzene | ND | 0.200 | " | | | | | | | |
| Hexachlorobutadiene | ND | 0.500 | " | | | | | | | |
| Isopropylbenzene | ND | 0.500 | " | | | | | | | |
| m,p-Xylene | ND | 0.500 | " | | | | | | | |
| Methyl tert-butyl ether | ND | 1.00 | " | | | | | | | |
| Methylene chloride | ND | 5.00 | " | | | | | | | |
| n-Butylbenzene | ND | 0.200 | " | | | | | | | |
| n-Propylbenzene | ND | 0.500 | " | | | | | | | |
| Naphthalene | ND | 0.500 | " | | | | | | | |
| o-Xylene | ND | 0.250 | " | | | | | | | |
| p-Isopropyltoluene | ND | 0.200 | " | | | | | | | |
| sec-Butylbenzene | ND | 0.200 | " | | | | | | | |
| Styrene | ND | 0.500 | " | | | | | | | |
| tert-Butylbenzene | ND | 0.500 | " | | | | | | | |
| Tetrachloroethene | ND | 0.200 | " | | | | | | | |
| Toluene | ND | 0.200 | " | | | | | | | |
| trans-1,2-Dichloroethene | ND | 0.200 | " | | | | | | | |
| trans-1,3-Dichloropropene | ND | 0.200 | " | | | | | | | |
| Trichloroethene | ND | 0.200 | " | | | | | | | |
| Trichlorofluoromethane | ND | 0.500 | " | | | | | | | |
| Vinyl chloride | ND | 0.200 | " | | | | | | | |
| Surrogate: 1,2-DCA-d4 | 3.85 | | " | 4.00 | | 96.2 | 70-130 | | | |
| Surrogate: Toluene-d8 | 3.91 | | " | 4.00 | | 97.8 | 70-130 | | | |
| Surrogate: 4-BFB | 4.35 | | " | 4.00 | | 109 | 70-130 | | | |

North Creek Analytical - Bothell

The results in this report apply to the samples analyzed in accordance with the chain of custody document. This analytical report must be reproduced in its entirety.

Kortland Orr, PM



Seattle 11720 North Creek Hwy N, Suite 400, Bothell, WA 98011-8244
 425.420.9200 fax 425.420.9210
 Spokane East 11115 Montgomery, Suite B, Spokane, WA 99206-4776
 509.924.9200 fax 509.924.9290
 Portland 9405 SW Nimbus Avenue, Beaverton, OR 97008-7132
 503.906.9200 fax 503.906.9210
 Bend 20332 Empire Avenue, Suite F-1, Bend, OR 97701-5711
 541.383.9310 fax 541.382.7588
 Anchorage 2000 W International Airport Road, Suite A-10, Anchorage, AK 99502-1119
 907.563.9200 fax 907.563.9210

Geomatrix Consultants, Inc. - Seattle
 600 University Street, Suite 1020
 Seattle, WA 98101

Project: Anacortes A Avenue
 Project Number: 9156
 Project Manager: Kathleen Goodman

Reported:
 01/08/04 18:28

Volatile Organic Compounds by EPA Method 8260B - Quality Control
North Creek Analytical - Bothell

| Analyte | Result | Reporting Limit | Units | Spike Level | Source Result | %REC | %REC Limits | RPD | RPD Limit | Notes |
|---|--------|-----------------|-------|-------------|---------------|------|-------------|-------|-----------|-------|
| Batch 3L23013: Prepared 12/22/03 Using EPA 5030B | | | | | | | | | | |
| LCS (3L23013-BS1) | | | | | | | | | | |
| 1,1-Dichloroethene | 1.98 | 0.200 | ug/l | 2.00 | | 99.0 | 80-120 | | | |
| Benzene | 2.02 | 0.200 | " | 2.00 | | 101 | 80-130 | | | |
| Chlorobenzene | 1.97 | 0.200 | " | 2.00 | | 98.5 | 80-120 | | | |
| Toluene | 2.13 | 0.200 | " | 2.00 | | 106 | 80-120 | | | |
| Trichloroethene | 2.03 | 0.200 | " | 2.00 | | 102 | 70-130 | | | |
| Surrogate: 1,2-DCA-d4 | 3.83 | | " | 4.00 | | 95.8 | 70-130 | | | |
| Surrogate: Toluene-d8 | 4.00 | | " | 4.00 | | 100 | 70-130 | | | |
| Surrogate: 4-BFB | 4.26 | | " | 4.00 | | 106 | 70-130 | | | |
| LCS Dup (3L23013-BSD1) | | | | | | | | | | |
| 1,1-Dichloroethene | 1.95 | 0.200 | ug/l | 2.00 | | 97.5 | 80-120 | 1.53 | 30 | |
| Benzene | 2.04 | 0.200 | " | 2.00 | | 102 | 80-130 | 0.985 | 20 | |
| Chlorobenzene | 2.00 | 0.200 | " | 2.00 | | 100 | 80-120 | 1.51 | 20 | |
| Toluene | 2.00 | 0.200 | " | 2.00 | | 100 | 80-120 | 6.30 | 20 | |
| Trichloroethene | 2.04 | 0.200 | " | 2.00 | | 102 | 70-130 | 0.491 | 20 | |
| Surrogate: 1,2-DCA-d4 | 3.76 | | " | 4.00 | | 94.0 | 70-130 | | | |
| Surrogate: Toluene-d8 | 3.95 | | " | 4.00 | | 98.8 | 70-130 | | | |
| Surrogate: 4-BFB | 4.30 | | " | 4.00 | | 108 | 70-130 | | | |

North Creek Analytical - Bothell

The results in this report apply to the samples analyzed in accordance with the chain of custody document. This analytical report must be reproduced in its entirety.

Kortland Ori, PM

North Creek Analytical, Inc.
 Environmental Laboratory Network



Seattle 11720 North Creek Pkwy N, Suite 400, Bothell, WA 98011-8244
 425.420.9200 fax 425.420.9210
 Spokane East 11115 Montgomery, Suite B, Spokane, WA 99206-4776
 509.924.9200 fax 509.924.9290
 Portland 9405 SW Nimbus Avenue, Beaverton, OR 97008-7132
 503.906.9200 fax 503.906.9210
 Bend 20332 Empire Avenue, Suite F-1, Bend, OR 97701-5711
 541.383.9310 fax 541.382.7588
 Anchorage 2000 W International Airport Road, Suite A-10, Anchorage, AK 99502-1119
 907.563.9200 fax 907.563.9210

Geomatrix Consultants, Inc. - Seattle
 600 University Street, Suite 1020
 Seattle, WA 98101

Project: Anacortes A Avenue
 Project Number: 9156
 Project Manager: Kathleen Goodman

Reported:
 01/08/04 18:28

Semivolatile Organic Compounds by EPA Method 8270C - Quality Control
North Creek Analytical - Bothell

| Analyte | Result | Reporting Limit | Units | Spike Level | Source Result | %REC %REC | Limits | RPD | RPD Limit | Notes |
|---------|--------|-----------------|-------|-------------|---------------|-----------|--------|-----|-----------|-------|
|---------|--------|-----------------|-------|-------------|---------------|-----------|--------|-----|-----------|-------|

Batch 3L19015: Prepared 12/19/03 Using EPA 3545

Blank (3L19015-BLK1)

| | | | | | | | | | | |
|-----------------------------|----|-------|-------|--|--|--|--|--|--|--|
| 1,2,4-Trichlorobenzene | ND | 0.330 | mg/kg | | | | | | | |
| 1,2-Dichlorobenzene | ND | 0.330 | " | | | | | | | |
| 1,3-Dichlorobenzene | ND | 0.330 | " | | | | | | | |
| 1,4-Dichlorobenzene | ND | 0.330 | " | | | | | | | |
| 2,4,5-Trichlorophenol | ND | 0.330 | " | | | | | | | |
| 2,4,6-Trichlorophenol | ND | 0.330 | " | | | | | | | |
| 2,4-Dichlorophenol | ND | 0.330 | " | | | | | | | |
| 2,4-Dimethylphenol | ND | 0.330 | " | | | | | | | |
| 2,4-Dinitrophenol | ND | 0.500 | " | | | | | | | |
| 2,4-Dinitrotoluene | ND | 0.500 | " | | | | | | | |
| 2,6-Dinitrotoluene | ND | 0.500 | " | | | | | | | |
| 2-Chloronaphthalene | ND | 0.330 | " | | | | | | | |
| 2-Chlorophenol | ND | 0.330 | " | | | | | | | |
| 2-Methylnaphthalene | ND | 0.330 | " | | | | | | | |
| 2-Methylphenol | ND | 0.330 | " | | | | | | | |
| 2-Nitroaniline | ND | 0.500 | " | | | | | | | |
| 2-Nitrophenol | ND | 0.330 | " | | | | | | | |
| 3 & 4-Methylphenol | ND | 0.330 | " | | | | | | | |
| 3,3'-Dichlorobenzidine | ND | 5.00 | " | | | | | | | |
| 3-Nitroaniline | ND | 0.500 | " | | | | | | | |
| 4,6-Dinitro-2-methylphenol | ND | 0.500 | " | | | | | | | |
| 4-Bromophenyl phenyl ether | ND | 0.330 | " | | | | | | | |
| 4-Chloro-3-methylphenol | ND | 0.330 | " | | | | | | | |
| 4-Chloroaniline | ND | 0.500 | " | | | | | | | |
| 4-Chlorophenyl phenyl ether | ND | 0.330 | " | | | | | | | |
| 4-Nitroaniline | ND | 0.500 | " | | | | | | | |
| 4-Nitrophenol | ND | 0.500 | " | | | | | | | |
| Acenaphthene | ND | 0.330 | " | | | | | | | |
| Acenaphthylene | ND | 0.330 | " | | | | | | | |
| Aniline | ND | 0.330 | " | | | | | | | |
| Anthracene | ND | 0.330 | " | | | | | | | |
| Benzo (a) anthracene | ND | 0.330 | " | | | | | | | |
| Benzo (a) pyrene | ND | 0.330 | " | | | | | | | |
| Benzo (b) fluoranthene | ND | 0.330 | " | | | | | | | |
| Benzo (ghi) perylene | ND | 0.330 | " | | | | | | | |

North Creek Analytical - Bothell

The results in this report apply to the samples analyzed in accordance with the chain of custody document. This analytical report must be reproduced in its entirety.

Kortland Orr, PM

North Creek Analytical, Inc.
 Environmental Laboratory Network

Page 40 of 50



Seattle 11720 North Creek Pkwy N, Suite 400, Bothell, WA 98011-8244
 425.420.9200 fax 425.420.9210
 Spokane East 11115 Montgomery, Suite B, Spokane, WA 99206-4776
 509.924.9200 fax 509.924.9290
 Portland 9405 SW Nimbus Avenue, Beaverton, OR 97008-7132
 503.906.9200 fax 503.906.9210
 Bend 20332 Empire Avenue, Suite F-1, Bend, OR 97701-5711
 541.383.9310 fax 541.382.7588
 Anchorage 2000 W International Airport Road, Suite A-10, Anchorage, AK 99502-1119
 907.563.9200 fax 907.563.9210

Geomatrix Consultants, Inc. - Seattle
 600 University Street, Suite 1020
 Seattle, WA 98101

Project: Anacortes A Avenue
 Project Number: 9156
 Project Manager: Kathleen Goodman

Reported:
 01/08/04 18:28

Semivolatile Organic Compounds by EPA Method 8270C - Quality Control
North Creek Analytical - Bothell

| Analyte | Result | Reporting Limit | Units | Spike Level | Source Result | %REC | %REC Limits | RPD | RPD Limit | Notes |
|---------|--------|-----------------|-------|-------------|---------------|------|-------------|-----|-----------|-------|
|---------|--------|-----------------|-------|-------------|---------------|------|-------------|-----|-----------|-------|

Batch 3L19015: Prepared 12/19/03 Using EPA 3545

Blank (3L19015-BLK1)

| | | | | | | | | | | |
|-----------------------------|------|-------|-------|------|--|------|--------|--|--|--|
| Benzo (k) fluoranthene | ND | 0.330 | mg/kg | | | | | | | |
| Benzoic Acid | ND | 1.00 | " | | | | | | | |
| Benzyl alcohol | ND | 0.330 | " | | | | | | | |
| Bis(2-chloroethoxy)methane | ND | 0.330 | " | | | | | | | |
| Bis(2-chloroethyl)ether | ND | 0.330 | " | | | | | | | |
| Bis(2-chloroisopropyl)ether | ND | 0.330 | " | | | | | | | |
| Bis(2-ethylhexyl)phthalate | ND | 0.330 | " | | | | | | | |
| Butyl benzyl phthalate | ND | 0.330 | " | | | | | | | |
| Carbazole | ND | 0.330 | " | | | | | | | |
| Chrysene | ND | 0.330 | " | | | | | | | |
| Di-n-butyl phthalate | ND | 0.330 | " | | | | | | | |
| Di-n-octyl phthalate | ND | 0.330 | " | | | | | | | |
| Dibenz (a,h) anthracene | ND | 0.330 | " | | | | | | | |
| Dibenzofuran | ND | 0.330 | " | | | | | | | |
| Diethyl phthalate | ND | 0.330 | " | | | | | | | |
| Dimethyl phthalate | ND | 0.330 | " | | | | | | | |
| Fluoranthene | ND | 0.330 | " | | | | | | | |
| Fluorene | ND | 0.330 | " | | | | | | | |
| Hexachlorobenzene | ND | 0.330 | " | | | | | | | |
| Hexachlorobutadiene | ND | 0.330 | " | | | | | | | |
| Hexachlorocyclopentadiene | ND | 0.500 | " | | | | | | | |
| Hexachloroethane | ND | 0.330 | " | | | | | | | |
| Indeno (1,2,3-cd) pyrene | ND | 0.330 | " | | | | | | | |
| Isophorone | ND | 0.330 | " | | | | | | | |
| N-Nitrosodi-n-propylamine | ND | 0.330 | " | | | | | | | |
| N-Nitrosodiphenylamine | ND | 0.330 | " | | | | | | | |
| Naphthalene | ND | 0.330 | " | | | | | | | |
| Nitrobenzene | ND | 0.330 | " | | | | | | | |
| Pentachlorophenol | ND | 0.500 | " | | | | | | | |
| Phenanthrene | ND | 0.330 | " | | | | | | | |
| Phenol | ND | 0.330 | " | | | | | | | |
| Pyrene | ND | 0.330 | " | | | | | | | |
| Surrogate: 2-FP | 1.34 | | " | 1.67 | | 80.2 | 26-137 | | | |
| Surrogate: Phenol-d6 | 1.29 | | " | 1.67 | | 77.2 | 10-153 | | | |
| Surrogate: 2,4,6-TBP | 1.08 | | " | 1.67 | | 64.7 | 10-133 | | | |

North Creek Analytical - Bothell

The results in this report apply to the samples analyzed in accordance with the chain of custody document. This analytical report must be reproduced in its entirety.

Kortland Orr, PM

North Creek Analytical, Inc.
 Environmental Laboratory Network



Seattle 11720 North Creek Pkwy N, Suite 400, Bothell, WA 98011-8244
 425.420.9200 fax 425.420.9210
 Spokane East 11115 Montgomery, Suite B, Spokane, WA 99206-4776
 509.924.9200 fax 509.924.9290
 Portland 9405 SW Nimbus Avenue, Beaverton, OR 97008-7132
 503.906.9200 fax 503.906.9210
 Bend 20332 Empire Avenue, Suite F-1, Bend, OR 97701-5711
 541.383.9310 fax 541.382.7588
 Anchorage 2000 W International Airport Road, Suite A-10, Anchorage, AK 99502-1119
 907.563.9200 fax 907.563.9210

Geomatrix Consultants, Inc. - Seattle
 600 University Street, Suite 1020
 Seattle, WA 98101

Project: Anacortes A Avenue
 Project Number: 9156
 Project Manager: Kathleen Goodman

Reported:
 01/08/04 18:28

Semivolatile Organic Compounds by EPA Method 8270C - Quality Control
North Creek Analytical - Bothell

| Analyte | Result | Reporting Limit | Units | Spike Level | Source Result | %REC %REC Limits | RPD RPD | RPD Limit | Notes |
|--|--------|-----------------|-------|-------------|---------------|------------------|---------|-----------|-------|
| Batch 3L19015: Prepared 12/19/03 Using EPA 3545 | | | | | | | | | |
| Blank (3L19015-BLK1) | | | | | | | | | |
| Surrogate: Nitrobenzene-d5 | 1.31 | | mg/kg | 1.67 | | 78.4 48-127 | | | |
| Surrogate: p-Terphenyl-d14 | 1.37 | | " | 1.67 | | 82.0 44-144 | | | |
| Surrogate: 2-FBP | 1.48 | | " | 1.67 | | 88.6 36-146 | | | |
| LCS (3L19015-BS1) | | | | | | | | | |
| 1,2,4-Trichlorobenzene | 2.94 | 0.330 | mg/kg | 3.33 | | 88.3 61-126 | | | |
| 1,4-Dichlorobenzene | 3.40 | 0.330 | " | 3.33 | | 102 47-138 | | | |
| 2,4-Dinitrotoluene | 3.29 | 0.500 | " | 3.33 | | 98.8 71-133 | | | |
| 2-Chlorophenol | 3.15 | 0.330 | " | 3.33 | | 94.6 54-144 | | | |
| 4-Chloro-3-methylphenol | 2.93 | 0.330 | " | 3.33 | | 88.0 71-129 | | | |
| 4-Nitrophenol | 3.26 | 0.500 | " | 3.33 | | 97.9 46-135 | | | |
| Acenaphthene | 3.11 | 0.330 | " | 3.33 | | 93.4 69-124 | | | |
| N-Nitrosodi-n-propylamine | 3.12 | 0.330 | " | 3.33 | | 93.7 48-140 | | | |
| Pentachlorophenol | 4.25 | 0.500 | " | 3.33 | | 128 57-128 | | | |
| Phenol | 2.96 | 0.330 | " | 3.33 | | 88.9 51-142 | | | |
| Pyrene | 3.18 | 0.330 | " | 3.33 | | 95.5 75-135 | | | |
| Surrogate: 2-FP | 1.54 | | " | 1.67 | | 92.2 26-137 | | | |
| Surrogate: Phenol-d6 | 1.54 | | " | 1.67 | | 92.2 10-153 | | | |
| Surrogate: 2,4,6-TBP | 1.50 | | " | 1.67 | | 89.8 10-133 | | | |
| Surrogate: Nitrobenzene-d5 | 1.57 | | " | 1.67 | | 94.0 48-127 | | | |
| Surrogate: p-Terphenyl-d14 | 1.63 | | " | 1.67 | | 97.6 44-144 | | | |
| Surrogate: 2-FBP | 1.70 | | " | 1.67 | | 102 36-146 | | | |
| LCS Dup (3L19015-BSD1) | | | | | | | | | |
| 1,2,4-Trichlorobenzene | 2.79 | 0.330 | mg/kg | 3.33 | | 83.8 61-126 | 5.24 | 22 | |
| 1,4-Dichlorobenzene | 3.18 | 0.330 | " | 3.33 | | 95.5 47-138 | 6.69 | 26 | |
| 2,4-Dinitrotoluene | 3.12 | 0.500 | " | 3.33 | | 93.7 71-133 | 5.30 | 21 | |
| 2-Chlorophenol | 2.96 | 0.330 | " | 3.33 | | 88.9 54-144 | 6.22 | 22 | |
| 4-Chloro-3-methylphenol | 2.77 | 0.330 | " | 3.33 | | 83.2 71-129 | 5.61 | 19 | |
| 4-Nitrophenol | 3.01 | 0.500 | " | 3.33 | | 90.4 46-135 | 7.97 | 17 | |
| Acenaphthene | 2.94 | 0.330 | " | 3.33 | | 88.3 69-124 | 5.62 | 24 | |
| N-Nitrosodi-n-propylamine | 2.93 | 0.330 | " | 3.33 | | 88.0 48-140 | 6.28 | 23 | |
| Pentachlorophenol | 3.95 | 0.500 | " | 3.33 | | 119 57-128 | 7.32 | 17 | |
| Phenol | 2.79 | 0.330 | " | 3.33 | | 83.8 51-142 | 5.91 | 20 | |
| Pyrene | 3.06 | 0.330 | " | 3.33 | | 91.9 75-135 | 3.85 | 17 | |
| Surrogate: 2-FP | 1.38 | | " | 1.67 | | 82.6 26-137 | | | |

North Creek Analytical - Bothell

The results in this report apply to the samples analyzed in accordance with the chain of custody document. This analytical report must be reproduced in its entirety.

Kortland Orr, PM

North Creek Analytical, Inc.
 Environmental Laboratory Network



Seattle 11720 North Creek Pkwy N, Suite 400, Bothell, WA 98011-8244
 425.420.9200 fax 425.420.9210
 Spokane East 11115 Montgomery, Suite B, Spokane, WA 99206-4776
 509.924.9200 fax 509.924.9290
 Portland 9405 SW Nimbus Avenue, Beaverton, OR 97008-7132
 503.906.9200 fax 503.906.9210
 Bend 20332 Empire Avenue, Suite F-1, Bend, OR 97701-5711
 541.383.9310 fax 541.382.7588
 Anchorage 2000 W International Airport Road, Suite A-10, Anchorage, AK 99502-1119
 907.563.9200 fax 907.563.9210

Geomatrix Consultants, Inc. - Seattle
 600 University Street, Suite 1020
 Seattle, WA 98101

Project: Anacortes A Avenue
 Project Number: 9156
 Project Manager: Kathleen Goodman

Reported:
 01/08/04 18:28

Semivolatile Organic Compounds by EPA Method 8270C - Quality Control
North Creek Analytical - Bothell

| Analyte | Result | Reporting Limit | Units | Spike Level | Source Result | %REC | %REC Limits | RPD | RPD Limit | Notes |
|---------|--------|-----------------|-------|-------------|---------------|------|-------------|-----|-----------|-------|
|---------|--------|-----------------|-------|-------------|---------------|------|-------------|-----|-----------|-------|

Batch 3L19015: Prepared 12/19/03 Using EPA 3545

LCS Dup (3L19015-BSD1)

| | | | | | | | | | | |
|----------------------------|------|--|-------|------|--|------|--------|--|--|--|
| Surrogate: Phenol-d6 | 1.40 | | mg/kg | 1.67 | | 83.8 | 10-153 | | | |
| Surrogate: 2,4,6-TBP | 1.33 | | " | 1.67 | | 79.6 | 10-133 | | | |
| Surrogate: Nitrobenzene-d5 | 1.41 | | " | 1.67 | | 84.4 | 48-127 | | | |
| Surrogate: p-Terphenyl-d14 | 1.50 | | " | 1.67 | | 89.8 | 44-144 | | | |
| Surrogate: 2-FBP | 1.55 | | " | 1.67 | | 92.8 | 36-146 | | | |

Matrix Spike (3L19015-MS1)

Source: B3L0579-01

| | | | | | | | | | | |
|----------------------------|------|-------|-----------|------|----|------|--------|--|--|--|
| 1,2,4-Trichlorobenzene | 2.76 | 0.330 | mg/kg dry | 3.55 | ND | 77.7 | 34-126 | | | |
| 1,4-Dichlorobenzene | 3.16 | 0.330 | " | 3.55 | ND | 89.0 | 31-126 | | | |
| 2,4-Dinitrotoluene | 3.14 | 0.500 | " | 3.55 | ND | 88.5 | 32-154 | | | |
| 2-Chlorophenol | 2.92 | 0.330 | " | 3.55 | ND | 82.3 | 34-144 | | | |
| 4-Chloro-3-methylphenol | 2.77 | 0.330 | " | 3.55 | ND | 78.0 | 32-156 | | | |
| 4-Nitrophenol | 2.91 | 0.500 | " | 3.55 | ND | 82.0 | 10-171 | | | |
| Acenaphthene | 2.92 | 0.330 | " | 3.55 | ND | 82.3 | 33-139 | | | |
| N-Nitrosodi-n-propylamine | 2.88 | 0.330 | " | 3.55 | ND | 81.1 | 23-140 | | | |
| Pentachlorophenol | 3.94 | 0.500 | " | 3.55 | ND | 111 | 10-165 | | | |
| Phenol | 2.75 | 0.330 | " | 3.55 | ND | 77.5 | 32-144 | | | |
| Pyrene | 3.04 | 0.330 | " | 3.55 | ND | 85.6 | 28-156 | | | |
| Surrogate: 2-FP | 1.40 | | " | 1.78 | | 78.7 | 26-137 | | | |
| Surrogate: Phenol-d6 | 1.42 | | " | 1.78 | | 79.8 | 10-153 | | | |
| Surrogate: 2,4,6-TBP | 1.39 | | " | 1.78 | | 78.1 | 10-133 | | | |
| Surrogate: Nitrobenzene-d5 | 1.45 | | " | 1.78 | | 81.5 | 48-127 | | | |
| Surrogate: p-Terphenyl-d14 | 1.52 | | " | 1.78 | | 85.4 | 44-144 | | | |
| Surrogate: 2-FBP | 1.59 | | " | 1.78 | | 89.3 | 36-146 | | | |

Matrix Spike Dup (3L19015-MSD1)

Source: B3L0579-01

| | | | | | | | | | | |
|---------------------------|------|-------|-----------|------|----|------|--------|------|----|--|
| 1,2,4-Trichlorobenzene | 2.91 | 0.330 | mg/kg dry | 3.55 | ND | 82.0 | 34-126 | 5.29 | 39 | |
| 1,4-Dichlorobenzene | 3.27 | 0.330 | " | 3.55 | ND | 92.1 | 31-126 | 3.42 | 42 | |
| 2,4-Dinitrotoluene | 3.42 | 0.500 | " | 3.55 | ND | 96.3 | 32-154 | 8.54 | 37 | |
| 2-Chlorophenol | 3.11 | 0.330 | " | 3.55 | ND | 87.6 | 34-144 | 6.30 | 39 | |
| 4-Chloro-3-methylphenol | 3.04 | 0.330 | " | 3.55 | ND | 85.6 | 32-156 | 9.29 | 36 | |
| 4-Nitrophenol | 3.30 | 0.500 | " | 3.55 | ND | 93.0 | 10-171 | 12.6 | 36 | |
| Acenaphthene | 3.15 | 0.330 | " | 3.55 | ND | 88.7 | 33-139 | 7.58 | 35 | |
| N-Nitrosodi-n-propylamine | 3.10 | 0.330 | " | 3.55 | ND | 87.3 | 23-140 | 7.36 | 39 | |
| Pentachlorophenol | 4.48 | 0.500 | " | 3.55 | ND | 126 | 10-165 | 12.8 | 39 | |
| Phenol | 2.95 | 0.330 | " | 3.55 | ND | 83.1 | 32-144 | 7.02 | 40 | |

North Creek Analytical - Bothell

The results in this report apply to the samples analyzed in accordance with the chain of custody document. This analytical report must be reproduced in its entirety.

Kortland Orr, PM



Seattle 11720 North Creek Pkwy N, Suite 400, Bothell, WA 98011-8244
 425.420.9200 fax 425.420.9210
 Spokane East 11115 Montgomery, Suite B, Spokane, WA 99206-4776
 509.924.9200 fax 509.924.9290
 Portland 9405 SW Nimbus Avenue, Beaverton, OR 97008-7132
 503.906.9200 fax 503.906.9210
 Bend 20332 Empire Avenue, Suite F-1, Bend, OR 97701-5711
 541.383.9310 fax 541.382.7588
 Anchorage 2000 W International Airport Road, Suite A-10, Anchorage, AK 99502-1119
 907.563.9200 fax 907.563.9210

Geomatrix Consultants, Inc. - Seattle
 600 University Street, Suite 1020
 Seattle, WA 98101

Project: Anacortes A Avenue
 Project Number: 9156
 Project Manager: Kathleen Goodman

Reported:
 01/08/04 18:28

Semivolatile Organic Compounds by EPA Method 8270C - Quality Control
North Creek Analytical - Bothell

| Analyte | Result | Reporting Limit | Units | Spike Level | Source Result | %REC | %REC Limits | RPD | RPD Limit | Notes |
|---------|--------|-----------------|-------|-------------|---------------|------|-------------|-----|-----------|-------|
|---------|--------|-----------------|-------|-------------|---------------|------|-------------|-----|-----------|-------|

Batch 3L19015: Prepared 12/19/03 Using EPA 3545

Matrix Spike Dup (3L19015-MSD1)

Source: B3L0579-01

| | | | | | | | | | | |
|----------------------------|------|-------|-----------|------|----|------|--------|------|----|--|
| Pyrene | 3.29 | 0.330 | mg/kg dry | 3.55 | ND | 92.7 | 28-156 | 7.90 | 35 | |
| Surrogate: 2-FP | 1.50 | | " | 1.78 | | 84.3 | 26-137 | | | |
| Surrogate: Phenol-d6 | 1.53 | | " | 1.78 | | 86.0 | 10-153 | | | |
| Surrogate: 2,4,6-TBP | 1.56 | | " | 1.78 | | 87.6 | 10-133 | | | |
| Surrogate: Nitrobenzene-d5 | 1.55 | | " | 1.78 | | 87.1 | 48-127 | | | |
| Surrogate: p-Terphenyl-d14 | 1.67 | | " | 1.78 | | 93.8 | 44-144 | | | |
| Surrogate: 2-FBP | 1.73 | | " | 1.78 | | 97.2 | 36-146 | | | |

North Creek Analytical - Bothell

The results in this report apply to the samples analyzed in accordance with the chain of custody document. This analytical report must be reproduced in its entirety.

Kortland Orr, PM

North Creek Analytical, Inc.
 Environmental Laboratory Network

Page 44 of 50



Seattle 11720 North Creek Pkwy N, Suite 400, Bothell, WA 98011-8244
 425.420.9200 fax 425.420.9210
 Spokane East 11115 Montgomery, Suite B, Spokane, WA 99206-4776
 509.924.9200 fax 509.924.9290
 Portland 9405 SW Nimbus Avenue, Beaverton, OR 97008-7132
 503.906.9200 fax 503.906.9210
 Bend 20332 Empire Avenue, Suite F-1, Bend, OR 97701-5711
 541.383.9310 fax 541.382.7588
 Anchorage 2000 W International Airport Road, Suite A-10, Anchorage, AK 99502-1119
 907.563.9200 fax 907.563.9210

Geomatrix Consultants, Inc. - Seattle
 600 University Street, Suite 1020
 Seattle, WA 98101

Project: Anacortes A Avenue
 Project Number: 9156
 Project Manager: Kathleen Goodman

Reported:
 01/08/04 18:28

**Anions by EPA Method 300.0 - Quality Control
 North Creek Analytical - Bothell**

| Analyte | Result | Reporting Limit | Units | Spike Level | Source Result | %REC | %REC Limits | RPD | RPD Limit | Notes |
|---|--------|-----------------|-----------|-------------|---------------|------|-------------|-------|-----------|-------|
| Batch 3L20002: Prepared 12/19/03 Using General Preparation | | | | | | | | | | |
| Blank (3L20002-BLK1) | | | | | | | | | | |
| Nitrate-Nitrogen | ND | 0.200 | mg/l as N | | | | | | | |
| LCS (3L20002-BS1) | | | | | | | | | | |
| Nitrate-Nitrogen | 1.03 | 0.200 | mg/l as N | 1.00 | | 103 | 90-110 | | | |
| LCS Dup (3L20002-BSD1) | | | | | | | | | | |
| Nitrate-Nitrogen | 1.04 | 0.200 | mg/l as N | 1.00 | | 104 | 90-110 | 0.966 | 20 | |
| Duplicate (3L20002-DUP1) Source: B3L0652-07 | | | | | | | | | | |
| Nitrate-Nitrogen | 1.07 | 0.200 | mg/l as N | | 1.07 | | | 0.00 | 25 | |
| Matrix Spike (3L20002-MS1) Source: B3L0652-07 | | | | | | | | | | |
| Nitrate-Nitrogen | 2.04 | 0.200 | mg/l as N | 1.00 | 1.07 | 97.0 | 54-124 | | | |
| Batch 3L29006: Prepared 12/28/03 Using General Preparation | | | | | | | | | | |
| Blank (3L29006-BLK1) | | | | | | | | | | |
| Sulfate | ND | 0.400 | mg/l | | | | | | | |
| Chloride | ND | 0.400 | " | | | | | | | |
| LCS (3L29006-BS1) | | | | | | | | | | |
| Sulfate | 6.20 | 0.400 | mg/l | 6.00 | | 103 | 90-110 | | | |
| Chloride | 2.07 | 0.400 | " | 2.00 | | 104 | 90-110 | | | |
| LCS Dup (3L29006-BSD1) | | | | | | | | | | |
| Chloride | 2.11 | 0.400 | mg/l | 2.00 | | 106 | 90-110 | 1.91 | 20 | |
| Sulfate | 6.22 | 0.400 | " | 6.00 | | 104 | 90-110 | 0.322 | 20 | |

North Creek Analytical - Bothell

The results in this report apply to the samples analyzed in accordance with the chain of custody document. This analytical report must be reproduced in its entirety.

Kortland Orr, PM



Seattle 11720 Creek Pkwy N, Suite 400, Bothell, WA 98011-8244
 425.420.9200 fax 425.420.9210
 Spokane East 11115 Montgomery, Suite B, Spokane, WA 99206-4776
 509.924.9200 fax 509.924.9290
 Portland 9405 SW Nimbus Avenue, Beaverton, OR 97008-7132
 503.906.9200 fax 503.906.9210
 Bend 20332 Empr Avenue, Suite F-1, Bend, OR 97701-5711
 541.383.9310 fax 541.382.7588
 Anchorage 2000 W International Airport Road, Suite A-10, Anchorage, AK 99502-1119
 907.563.9200 fax 907.563.9210

Geomatrix Consultants, Inc. - Seattle
 600 University Street, Suite 1020
 Seattle, WA 98101

Project: Anacortes A Avenue
 Project Number: 9156
 Project Manager: Kathleen Goodman

Reported:
 01/08/04 18:28

Anions by EPA Method 300.0 - Quality Control
North Creek Analytical - Bothell

| Analyte | Result | Reporting Limit | Units | Spike Level | Source Result | %REC | %REC Limits | RPD | RPD Limit | Notes |
|---|--------|-----------------|-------|-------------|---------------------------|------|-------------|------|-----------|-------|
| Batch 3L29006: Prepared 12/28/03 Using General Preparation | | | | | | | | | | |
| Matrix Spike (3L29006-MS1) | | | | | Source: B3L0652-06 | | | | | |
| Chloride | 154 | 20.0 | mg/l | 100 | 45.6 | 108 | 52-134 | | | |
| Matrix Spike (3L29006-MS2) | | | | | Source: B3L0652-06 | | | | | |
| Sulfate | 9.68 | 0.400 | mg/l | 6.00 | 3.33 | 106 | 58-135 | | | |
| Matrix Spike (3L29006-MS3) | | | | | Source: B3L0739-02 | | | | | |
| Sulfate | 39.2 | 4.00 | mg/l | 6.00 | 34.8 | 73.3 | 58-135 | | | |
| Matrix Spike Dup (3L29006-MSD1) | | | | | Source: B3L0652-06 | | | | | |
| Chloride | 147 | 20.0 | mg/l | 100 | 45.6 | 101 | 52-134 | 4.65 | 25 | |
| Matrix Spike Dup (3L29006-MSD2) | | | | | Source: B3L0652-06 | | | | | |
| Sulfate | 9.95 | 0.400 | mg/l | 6.00 | 3.33 | 110 | 58-135 | 2.75 | 25 | |
| Matrix Spike Dup (3L29006-MSD3) | | | | | Source: B3L0739-02 | | | | | |
| Sulfate | 38.8 | 4.00 | mg/l | 6.00 | 34.8 | 66.7 | 58-135 | 1.03 | 25 | |

North Creek Analytical - Bothell

The results in this report apply to the samples analyzed in accordance with the chain of custody document. This analytical report must be reproduced in its entirety.

Kortland Orr, PM



Seattle 11720 North Creek Highway N, Suite 400, Bothell, WA 98011-8244
 425.420.9200 fax 425.420.9210
 Spokane East 11115 Montgomery, Suite B, Spokane, WA 99206-4776
 509.924.9200 fax 509.924.9290
 Portland 9405 SW Nimbus Avenue, Beaverton, OR 97008-7132
 503.906.9200 fax 503.906.9210
 Bend 20332 Empire Avenue, Suite F-1, Bend, OR 97701-5711
 541.383.9310 fax 541.382.7588
 Anchorage 2000 W International Airport Road, Suite A-10, Anchorage, AK 99502-1119
 907.563.9200 fax 907.563.9210

Geomatrix Consultants, Inc. - Seattle
 600 University Street, Suite 1020
 Seattle, WA 98101

Project: Anacortes A Avenue
 Project Number: 9156
 Project Manager: Kathleen Goodman

Reported:
 01/08/04 18:28

**Physical Parameters by APHA/ASTM/EPA Methods - Quality Control
 North Creek Analytical - Bothell**

| Analyte | Result | Reporting Limit | Units | Spike Level | Source Result | %REC | %REC Limits | RPD | RPD Limit | Notes |
|---------|--------|-----------------|-------|-------------|---------------|------|-------------|-----|-----------|-------|
|---------|--------|-----------------|-------|-------------|---------------|------|-------------|-----|-----------|-------|

Batch 3L22042: Prepared 12/22/03 Using Dry Weight

Blank (3L22042-BLK1)

| | | | | | | | | | | |
|------------|-----|------|---|--|--|--|--|--|--|--|
| Dry Weight | 100 | 1.00 | % | | | | | | | |
|------------|-----|------|---|--|--|--|--|--|--|--|

North Creek Analytical - Bothell

The results in this report apply to the samples analyzed in accordance with the chain of custody document. This analytical report must be reproduced in its entirety.

Kortland Orr, PM



Seattle 11720 1st Creek Pkwy N, Suite 400, Bothell, WA 98011-8244
425.420.9200 fax 425.420.9210
Spokane East 11115 Montgomery, Suite B, Spokane, WA 99206-4776
509.924.9200 fax 509.924.9290
Portland 9405 SW Nimbus Avenue, Beaverton, OR 97008-7132
503.906.9200 fax 503.906.9210
Bend 20332 Empire Avenue, Suite F-1, Bend, OR 97701-5711
541.383.9310 fax 541.382.7588
Anchorage 2000 W International Airport Road, Suite A-10, Anchorage, AK 99502-1119
907.563.9200 fax 907.563.9210

Geomatrix Consultants, Inc. - Seattle
600 University Street, Suite 1020
Seattle, WA 98101

Project: Anacortes A Avenue
Project Number: 9156
Project Manager: Kathleen Goodman


Reported:
01/08/04 18:28

Notes and Definitions

- D-09 Results in the diesel organics range are primarily due to overlap from a heavy oil range product.
- D-14 Diluted due to matrix effect.
- Q-01 The spike recovery for this QC sample is outside of established control limits. Review of associated batch QC indicates the recovery for this analyte does not represent an out-of-control condition for the batch.
- Q-03 The percent recovery for this QC spike sample cannot be accurately calculated due to the high concentration of analyte already present in the sample.
- Q-13 Multiple analyses indicate the percent recovery is outside the control limits due to a matrix effect.
- Q-15 Analyses are not controlled on matrix spike RPD and/or percent recoveries when the sample concentration is significantly higher than the spike level.
- S-01 The surrogate recovery for this sample is not available due to sample dilution required from high analyte concentration and/or matrix interferences.
- S-10 The surrogate recovery is outside of established control limits and biased high. However, the concentrations of the associated target compounds are less than the corresponding method reporting limits.
- DET Analyte DETECTED
- ND Analyte NOT DETECTED at or above the reporting limit
- NR Not Reported
- dry Sample results reported on a dry weight basis
- RPD Relative Percent Difference

North Creek Analytical - Bothell

The results in this report apply to the samples analyzed in accordance with the chain of custody document. This analytical report must be reproduced in its entirety.


Kortland Orr, PM