



July 20, 2017

Mr. Chris DeWald
25th & Proctor, LLC
6622 Wollochet Drive NW
Gig Harbor, Washington 98335

Re: Soil sampling results for VOCs at the 25th and Proctor Street property in Tacoma.

Dear Chris:

A dry cleaning business operated along the southeast portion of the subject North 25th Street and North Proctor Street property in Tacoma (Figure 1). Previous soil sampling indicated the presence of tetrachloroethylene (perchloroethylene or Perc), a typical dry cleaning solvent, within the dry cleaner area at concentrations that are below the Washington State Department of Ecology's (Ecology's) MTCA cleanup standard based on unrestricted (residential) land use.

Recent re-development of the overall property included a mass excavation of soil up to approximately 10 feet below grade across the site. After completion of this excavation, soil samples were collected to determine whether Perc exists in the remaining soil. The purpose of this report is to document these soil sampling results.

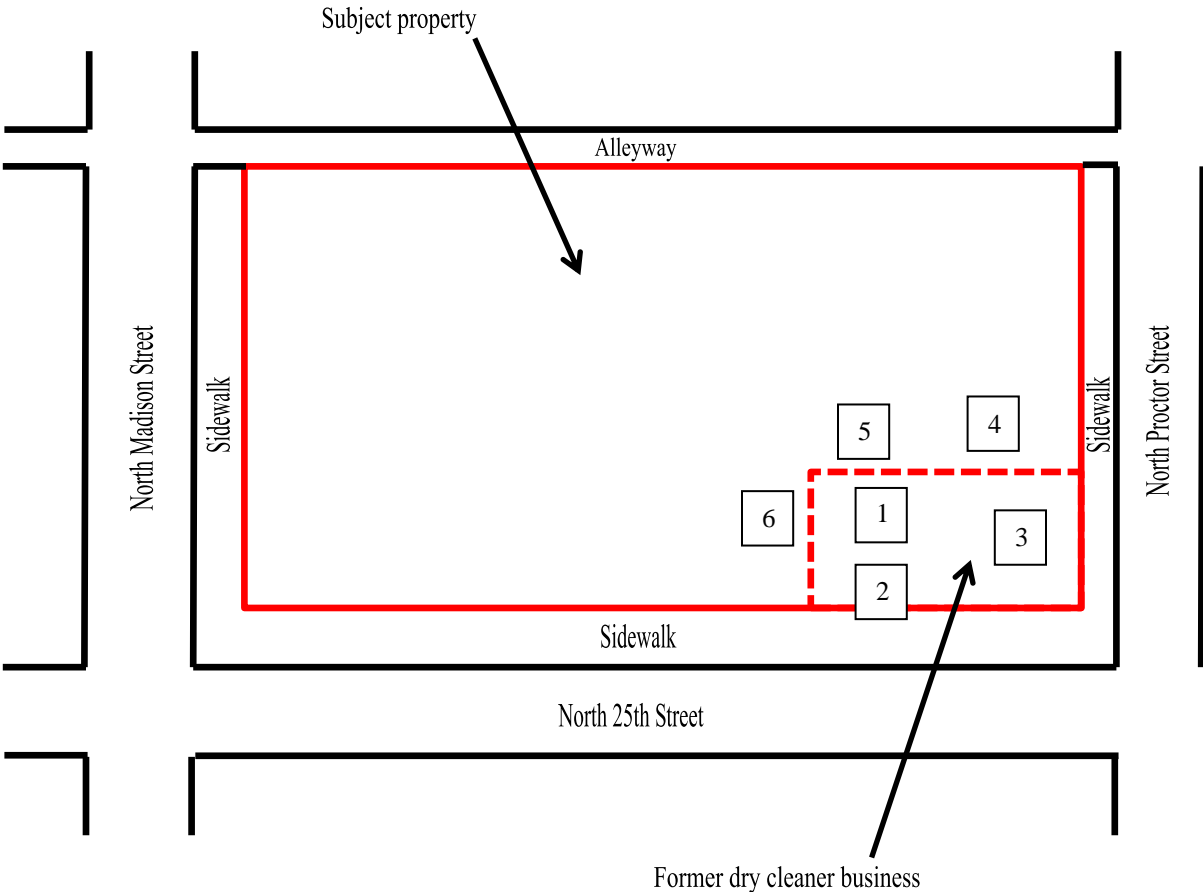
SOIL SAMPLING AND ANALYTICAL RESULTS

In June and July, 2017, a total of 6 soil samples were collected from select areas of the site at depths of approximately 12 inches below post-excavation grade (sample numbers 1 through 6) (see Figure 1).

Sample number 1 was collected directly beneath the former location of the dry cleaning machine (see Figure 1). Sample number 2 was collected directly beneath the former sewer lines extending from the dry cleaner building to North 25th Street. Sample number 3 was collected from a random location on the former dry cleaner area. Sample numbers 4 through 6 were collected from areas immediately north and west of the former dry cleaner business.

All soil samples were analyzed for volatile organic compounds (VOCs), including Perc. Analytical results are attached and summarized below in Table 1.

Figure 1. Approximate soil sampling locations. 25th and Proctor Street, Tacoma. June and July, 2017.



Not to scale



Table 1. VOC soil sampling results. 25th and Proctor Street, Tacoma. June and July, 2017.

Sample Number	Location/Description	Analytical Result (ppm)	Ecology Cleanup Standard (ppm)
1	Dry cleaner property. Directly beneath former location of dry cleaning machine. Approximately 12 inches below post-excavation grade.	ND VOCs	NA VOCs
2	Dry cleaner property. Directly beneath former location of sewer lines from building. Approximately 12 inches below post-excavation grade.	ND VOCs	NA VOCs
3	Dry cleaner area. Approximately 12 inches below post-excavation grade.	ND VOCs	NA VOCs
4	Immediately north of dry cleaner business. Approximately 12 inches below post-excavation grade.	ND VOCs	NA VOCs
5	Immediately north of dry cleaner business. Approximately 12 inches below post-excavation grade.	ND VOCs	NA VOCs
6	Immediately west of dry cleaner business. Approximately 12 inches below post-excavation grade.	ND VOCs	NA VOCs

ND VOCs were not detected in the sample at concentrations above the analytical detection limits.

NA Cleanup standard is not applicable since no contaminants were detected in the sample.

From Table 1, there were no VOCs detected in any of the soil samples collected from the subject 25th and Proctor Street property. Based on these results, no further environmental investigation of the property for VOC contamination is warranted.

It was a pleasure assisting you with this sampling effort. Please call me if you have any questions.



Sincerely,

ECO COMPLIANCE CORPORATION

Bill Kane

Bill Kane
President

bill@ecocompliance.biz

Attachment





SPECTRA Laboratories

...Where experience matters

2221 Ross Way • Tacoma, WA 98421 • (253) 272-4850 • Fax (253) 572-9838 • www.spectra-lab.com

06/12/2017

Eco Compliance
 1823 Bremerton Ave NE
 Renton, WA 98059-3954
 Attn: Bill Kane

P.O.#: COD
 Project: Chris
 Client ID: 1
 Sample Matrix: Soil
 Date Sampled: 06/05/2017
 Date Received: 06/05/2017
 Spectra Project: 2017060111
 Spectra Number: 1

Analyte	Result	Units	Method	Analyte	Result	Units	Method
1,1,1,2-Tetrachloroethane	<0.05	mg/Kg	SW846 8260C	2-Butanone (MEK)	<0.5	mg/Kg	SW846 8260C
1,1,1-Trichloroethane	<0.05	mg/Kg	SW846 8260C	2-Chlorotoluene	<0.05	mg/Kg	SW846 8260C
1,1,2,2-Tetrachloroethane	<0.05	mg/Kg	SW846 8260C	2-Hexanone (MBK)	<0.5	mg/Kg	SW846 8260C
1,1,2-Trichloroethane	<0.05	mg/Kg	SW846 8260C	4-Chlorotoluene	<0.05	mg/Kg	SW846 8260C
1,1-Dichloroethane	<0.05	mg/Kg	SW846 8260C	4-Isopropyltoluene	<0.05	mg/Kg	SW846 8260C
1,1-Dichloroethene	<0.05	mg/Kg	SW846 8260C	4-methyl-2-pentanone	<0.5	mg/Kg	SW846 8260C
1,1-Dichloropropene	<0.05	mg/Kg	SW846 8260C	Acetone	<0.5	mg/Kg	SW846 8260C
1,2,3-Trichlorobenzene	<0.05	mg/Kg	SW846 8260C	Acrolein	<0.5	mg/Kg	SW846 8260C
1,2,3-Trichloropropane	<0.05	mg/Kg	SW846 8260C	Acrylonitrile	<0.5	mg/Kg	SW846 8260C
1,2,4-Trichlorobenzene	<0.05	mg/Kg	SW846 8260C	Benzene	<0.05	mg/Kg	SW846 8260C
1,2,4-Trimethylbenzene	<0.05	mg/Kg	SW846 8260C	Bromobenzene	<0.05	mg/Kg	SW846 8260C
1,2-Dibromo3Chloropropane	<0.5	mg/Kg	SW846 8260C	Bromochloromethane	<0.05	mg/Kg	SW846 8260C
1,2-Dibromoethane (EDB)	<0.05	mg/Kg	SW846 8260C	Bromodichloromethane	<0.05	mg/Kg	SW846 8260C
1,2-Dichlorobenzene	<0.05	mg/Kg	SW846 8260C	Bromoform	<0.05	mg/Kg	SW846 8260C
1,2-Dichloroethane	<0.05	mg/Kg	SW846 8260C	Bromomethane	<0.05	mg/Kg	SW846 8260C
1,2-Dichloropropane	<0.05	mg/Kg	SW846 8260C	Carbon Tetrachloride	<0.05	mg/Kg	SW846 8260C
1,3,5-Trimethylbenzene	<0.05	mg/Kg	SW846 8260C	Chlorobenzene	<0.05	mg/Kg	SW846 8260C
1,3-Dichlorobenzene	<0.05	mg/Kg	SW846 8260C	Chlorodibromomethane	<0.05	mg/Kg	SW846 8260C
1,3-Dichloropropane	<0.05	mg/Kg	SW846 8260C	Chloroethane	<0.05	mg/Kg	SW846 8260C
1,4-Dichlorobenzene	<0.05	mg/Kg	SW846 8260C	Chloroform	<0.05	mg/Kg	SW846 8260C
2,2-Dichloropropane	<0.05	mg/Kg	SW846 8260C	Chloromethane	<0.05	mg/Kg	SW846 8260C

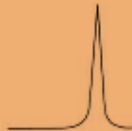
Surrogate	Recovery	Method
1,2-Dichloroethane-d4	78	SW846 8260C
4-Bromofluorobenzene	81	SW846 8260C
Dibromofluoromethane	69	SW846 8260C
Toluene-d8	94	SW846 8260C

SPECTRA LABORATORIES


 Jeremy Cooper, Laboratory Manager
 a14/jac

Page 1 of 2





SPECTRA Laboratories

...Where experience matters

2221 Ross Way • Tacoma, WA 98421 • (253) 272-4850 • Fax (253) 572-9838 • www.spectra-lab.com

06/12/2017


Eco Compliance
1823 Bremerton Ave NE
Renton, WA 98059-3954
Attn: Bill Kane

P.O.#: COD
Project: Chris
Client ID: 1
Sample Matrix: Soil
Date Sampled: 06/05/2017
Date Received: 06/05/2017
Spectra Project: 2017060111
Spectra Number: 1

Analyte	Result	Units	Method	Analyte	Result	Units	Method
Dibromomethane	<0.05	mg/Kg	SW846 8260C	tert-Butylbenzene	<0.05	mg/Kg	SW846 8260C
Dichlorodifluoromethane	<0.05	mg/Kg	SW846 8260C	trans-1,2-Dichloroethene	<0.05	mg/Kg	SW846 8260C
Ethylbenzene	<0.05	mg/Kg	SW846 8260C	trans-1,3-Dichloropropene	<0.05	mg/Kg	SW846 8260C
Hexachlorobutadiene	<0.05	mg/Kg	SW846 8260C				
Isopropylbenzene	<0.05	mg/Kg	SW846 8260C				
Methyl-tert-Butyl Ether	<0.05	mg/Kg	SW846 8260C				
Methylene chloride	<0.25	mg/Kg	SW846 8260C				
Naphthalene	<0.05	mg/Kg	SW846 8260C				
Styrene	<0.05	mg/Kg	SW846 8260C				
Tetrachloroethene	<0.05	mg/Kg	SW846 8260C				
Toluene	<0.05	mg/Kg	SW846 8260C				
Total Xylenes	<0.1	mg/Kg	SW846 8260C				
Trichloroethene	<0.05	mg/Kg	SW846 8260C				
Trichlorofluoromethane	<0.05	mg/Kg	SW846 8260C				
Vinyl Acetate	<0.5	mg/Kg	SW846 8260C				
Vinyl chloride	<0.05	mg/Kg	SW846 8260C				
cis-1,2-Dichloroethene	<0.05	mg/Kg	SW846 8260C				
cis-1,3-Dichloropropene	<0.05	mg/Kg	SW846 8260C				
n-Butylbenzene	<0.05	mg/Kg	SW846 8260C				
n-Propylbenzene	<0.05	mg/Kg	SW846 8260C				
sec-Butylbenzene	<0.05	mg/Kg	SW846 8260C				

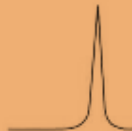
Surrogate	Recovery	Method
1,2-Dichloroethane-d4	78	SW846 8260C
4-Bromofluorobenzene	81	SW846 8260C
Dibromofluoromethane	69	SW846 8260C
Toluene-d8	94	SW846 8260C

SPECTRA LABORATORIES


Jeremy Cooper, Laboratory Manager
a14/jac

Page 2 of 2





SPECTRA Laboratories

...Where experience matters

2221 Ross Way • Tacoma, WA 98421 • (253) 272-4850 • Fax (253) 572-9838 • www.spectra-lab.com

07/12/2017

Eco Compliance
1823 Bremerton Ave NE
Renton, WA 98059-3954
Attn: Bill Kane


Project: Chris
Client ID: 2
Sample Matrix: Soil
Date Sampled: 07/11/2017
Date Received: 07/11/2017
Spectra Project: 2017070178
Spectra Number: 1

Rush

Analyte	Result	Units	Method	Analyte	Result	Units	Method
1,1,1,2-Tetrachloroethane	<0.05	mg/Kg	SW846 8260C	2-Butanone (MEK)	<0.5	mg/Kg	SW846 8260C
1,1,1-Trichloroethane	<0.05	mg/Kg	SW846 8260C	2-Chlorotoluene	<0.05	mg/Kg	SW846 8260C
1,1,2,2-Tetrachloroethane	<0.05	mg/Kg	SW846 8260C	2-Hexanone (MBK)	<0.5	mg/Kg	SW846 8260C
1,1,2-Trichloroethane	<0.05	mg/Kg	SW846 8260C	4-Chlorotoluene	<0.05	mg/Kg	SW846 8260C
1,1-Dichloroethane	<0.05	mg/Kg	SW846 8260C	4-Isopropyltoluene	<0.05	mg/Kg	SW846 8260C
1,1-Dichloroethene	<0.05	mg/Kg	SW846 8260C	4-methyl-2-pentanone	<0.5	mg/Kg	SW846 8260C
1,1-Dichloropropene	<0.05	mg/Kg	SW846 8260C	Acetone	<0.5	mg/Kg	SW846 8260C
1,2,3-Trichlorobenzene	<0.05	mg/Kg	SW846 8260C	Acrolein	<0.5	mg/Kg	SW846 8260C
1,2,3-Trichloropropane	<0.05	mg/Kg	SW846 8260C	Acrylonitrile	<0.5	mg/Kg	SW846 8260C
1,2,4-Trichlorobenzene	<0.05	mg/Kg	SW846 8260C	Benzene	<0.05	mg/Kg	SW846 8260C
1,2,4-Trimethylbenzene	<0.05	mg/Kg	SW846 8260C	Bromobenzene	<0.05	mg/Kg	SW846 8260C
1,2-Dibromo3Chloropropane	<0.5	mg/Kg	SW846 8260C	Bromochloromethane	<0.05	mg/Kg	SW846 8260C
1,2-Dibromoethane (EDB)	<0.05	mg/Kg	SW846 8260C	Bromodichloromethane	<0.05	mg/Kg	SW846 8260C
1,2-Dichlorobenzene	<0.05	mg/Kg	SW846 8260C	Bromoform	<0.05	mg/Kg	SW846 8260C
1,2-Dichloroethane	<0.05	mg/Kg	SW846 8260C	Bromomethane	<0.05	mg/Kg	SW846 8260C
1,2-Dichloropropane	<0.05	mg/Kg	SW846 8260C	Carbon Tetrachloride	<0.05	mg/Kg	SW846 8260C
1,3,5-Trimethylbenzene	<0.05	mg/Kg	SW846 8260C	Chlorobenzene	<0.05	mg/Kg	SW846 8260C
1,3-Dichlorobenzene	<0.05	mg/Kg	SW846 8260C	Chlorodibromomethane	<0.05	mg/Kg	SW846 8260C
1,3-Dichloropropane	<0.05	mg/Kg	SW846 8260C	Chloroethane	<0.05	mg/Kg	SW846 8260C
1,4-Dichlorobenzene	<0.05	mg/Kg	SW846 8260C	Chloroform	<0.05	mg/Kg	SW846 8260C
2,2-Dichloropropane	<0.05	mg/Kg	SW846 8260C	Chloromethane	<0.05	mg/Kg	SW846 8260C

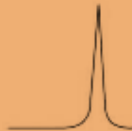
Surrogate	Recovery	Method
1,2-Dichloroethane-d4	108	SW846 8260C
4-Bromofluorobenzene	98	SW846 8260C
Dibromofluoromethane	100	SW846 8260C
Toluene-d8	98	SW846 8260C

SPECTRA LABORATORIES


Jeffrey Cooper, Laboratory Manager
n14/juc

Page 1 of 10





SPECTRA Laboratories

...Where experience matters

2221 Ross Way • Tacoma, WA 98421 • (253) 272-4850 • Fax (253) 572-9838 • www.spectra-lab.com

07/12/2017

Eco Compliance
 1823 Bremerton Ave NE
 Renton, WA 98059-3954
 Attn: Bill Kane


Project: Chris
 Client ID: 2
 Sample Matrix: Soil
 Date Sampled: 07/11/2017
 Date Received: 07/11/2017
 Spectra Project: 2017070178
 Spectra Number: 1

Rush

Analyte	Result	Units	Method	Analyte	Result	Units	Method
Dibromomethane	<0.05	mg/Kg	SW846 8260C	tert-Butylbenzene	<0.05	mg/Kg	SW846 8260C
Dichlorodifluoromethane	<0.05	mg/Kg	SW846 8260C	trans-1,2-Dichloroethene	<0.05	mg/Kg	SW846 8260C
Ethylbenzene	<0.05	mg/Kg	SW846 8260C	trans-1,3-Dichloropropene	<0.05	mg/Kg	SW846 8260C
Hexachlorobutadiene	<0.05	mg/Kg	SW846 8260C				
Isopropylbenzene	<0.05	mg/Kg	SW846 8260C				
Methyl-tert-Butyl Ether	<0.05	mg/Kg	SW846 8260C				
Methylene chloride	<0.25	mg/Kg	SW846 8260C				
Naphthalene	<0.05	mg/Kg	SW846 8260C				
Styrene	<0.05	mg/Kg	SW846 8260C				
Tetrachloroethene	<0.05	mg/Kg	SW846 8260C				
Toluene	<0.05	mg/Kg	SW846 8260C				
Total Xylenes	<0.1	mg/Kg	SW846 8260C				
Trichloroethene	<0.05	mg/Kg	SW846 8260C				
Trichlorofluoromethane	<0.05	mg/Kg	SW846 8260C				
Vinyl Acetate	<0.5	mg/Kg	SW846 8260C				
Vinyl chloride	<0.05	mg/Kg	SW846 8260C				
cis-1,2-Dichloroethene	<0.05	mg/Kg	SW846 8260C				
cis-1,3-Dichloropropene	<0.05	mg/Kg	SW846 8260C				
n-Butylbenzene	<0.05	mg/Kg	SW846 8260C				
n-Propylbenzene	<0.05	mg/Kg	SW846 8260C				
sec-Butylbenzene	<0.05	mg/Kg	SW846 8260C				

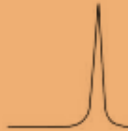
Surrogate	Recovery	Method
1,2-Dichloroethane-d4	108	SW846 8260C
4-Bromofluorobenzene	98	SW846 8260C
Dibromofluoromethane	100	SW846 8260C
Toluene-d8	98	SW846 8260C

SPECTRA LABORATORIES


 Jeffrey Cooper, Laboratory Manager
 a14-jbc

Page 2 of 10





SPECTRA Laboratories

...Where experience matters

2221 Ross Way • Tacoma, WA 98421 • (253) 272-4850 • Fax (253) 572-9838 • www.spectra-lab.com

07/12/2017

Eco Compliance
1823 Bremerton Ave NE
Renton, WA 98059-3954
Attn: Bill Kane


Project: Chris
Client ID: 3
Sample Matrix: Soil
Date Sampled: 07/11/2017
Date Received: 07/11/2017
Spectra Project: 2017070178
Spectra Number: 2

Rush

Analyte	Result	Units	Method	Analyte	Result	Units	Method
1,1,1,2-Tetrachloroethane	<0.05	mg/Kg	SW846 8260C	2-Butanone (MEK)	<0.5	mg/Kg	SW846 8260C
1,1,1-Trichloroethane	<0.05	mg/Kg	SW846 8260C	2-Chlorotoluene	<0.05	mg/Kg	SW846 8260C
1,1,2,2-Tetrachloroethane	<0.05	mg/Kg	SW846 8260C	2-Hexanone (MBK)	<0.5	mg/Kg	SW846 8260C
1,1,2-Trichloroethane	<0.05	mg/Kg	SW846 8260C	4-Chlorotoluene	<0.05	mg/Kg	SW846 8260C
1,1-Dichloroethane	<0.05	mg/Kg	SW846 8260C	4-Isopropyltoluene	<0.05	mg/Kg	SW846 8260C
1,1-Dichloroethene	<0.05	mg/Kg	SW846 8260C	4-methyl-2-pentanone	<0.5	mg/Kg	SW846 8260C
1,1-Dichloropropene	<0.05	mg/Kg	SW846 8260C	Acetone	<0.5	mg/Kg	SW846 8260C
1,2,3-Trichlorobenzene	<0.05	mg/Kg	SW846 8260C	Acrolein	<0.5	mg/Kg	SW846 8260C
1,2,3-Trichloropropane	<0.05	mg/Kg	SW846 8260C	Acrylonitrile	<0.5	mg/Kg	SW846 8260C
1,2,4-Trichlorobenzene	<0.05	mg/Kg	SW846 8260C	Benzene	<0.05	mg/Kg	SW846 8260C
1,2,4-Trimethylbenzene	<0.05	mg/Kg	SW846 8260C	Bromobenzene	<0.05	mg/Kg	SW846 8260C
1,2-Dibromo3Chloropropane	<0.5	mg/Kg	SW846 8260C	Bromochloromethane	<0.05	mg/Kg	SW846 8260C
1,2-Dibromoethane (EDB)	<0.05	mg/Kg	SW846 8260C	Bromodichloromethane	<0.05	mg/Kg	SW846 8260C
1,2-Dichlorobenzene	<0.05	mg/Kg	SW846 8260C	Bromoform	<0.05	mg/Kg	SW846 8260C
1,2-Dichloroethane	<0.05	mg/Kg	SW846 8260C	Bromomethane	<0.05	mg/Kg	SW846 8260C
1,2-Dichloropropane	<0.05	mg/Kg	SW846 8260C	Carbon Tetrachloride	<0.05	mg/Kg	SW846 8260C
1,3,5-Trimethylbenzene	<0.05	mg/Kg	SW846 8260C	Chlorobenzene	<0.05	mg/Kg	SW846 8260C
1,3-Dichlorobenzene	<0.05	mg/Kg	SW846 8260C	Chlorodibromomethane	<0.05	mg/Kg	SW846 8260C
1,3-Dichloropropane	<0.05	mg/Kg	SW846 8260C	Chloroethane	<0.05	mg/Kg	SW846 8260C
1,4-Dichlorobenzene	<0.05	mg/Kg	SW846 8260C	Chloroform	<0.05	mg/Kg	SW846 8260C
2,2-Dichloropropane	<0.05	mg/Kg	SW846 8260C	Chloromethane	<0.05	mg/Kg	SW846 8260C

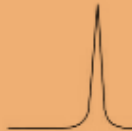
Surrogate	Recovery	Method
1,2-Dichloroethane-d4	104	SW846 8260C
4-Bromofluorobenzene	97	SW846 8260C
Dibromofluoromethane	99	SW846 8260C
Toluene-d8	98	SW846 8260C

SPECTRA LABORATORIES


Jeffrey Cooper, Laboratory Manager
aj4/jac

Page 3 of 10





SPECTRA Laboratories

...Where experience matters

2221 Ross Way • Tacoma, WA 98421 • (253) 272-4850 • Fax (253) 572-9838 • www.spectra-lab.com

07/12/2017

Eco Compliance
 1823 Bremerton Ave NE
 Renton, WA 98059-3954
 Attn: Bill Kane


Project: Chris
 Client ID: 3
 Sample Matrix: Soil
 Date Sampled: 07/11/2017
 Date Received: 07/11/2017
 Spectra Project: 2017070178
 Spectra Number: 2

Rush

Analyte	Result	Units	Method	Analyte	Result	Units	Method
Dibromomethane	<0.05	mg/Kg	SW846 8260C	tert-Butylbenzene	<0.05	mg/Kg	SW846 8260C
Dichlorodifluoromethane	<0.05	mg/Kg	SW846 8260C	trans-1,2-Dichloroethene	<0.05	mg/Kg	SW846 8260C
Ethylbenzene	<0.05	mg/Kg	SW846 8260C	trans-1,3-Dichloropropene	<0.05	mg/Kg	SW846 8260C
Hexachlorobutadiene	<0.05	mg/Kg	SW846 8260C				
Isopropylbenzene	<0.05	mg/Kg	SW846 8260C				
Methyl-tert-Butyl Ether	<0.05	mg/Kg	SW846 8260C				
Methylene chloride	<0.25	mg/Kg	SW846 8260C				
Naphthalene	<0.05	mg/Kg	SW846 8260C				
Styrene	<0.05	mg/Kg	SW846 8260C				
Tetrachloroethene	<0.05	mg/Kg	SW846 8260C				
Toluene	<0.05	mg/Kg	SW846 8260C				
Total Xylenes	<0.1	mg/Kg	SW846 8260C				
Trichloroethene	<0.05	mg/Kg	SW846 8260C				
Trichlorofluoromethane	<0.05	mg/Kg	SW846 8260C				
Vinyl Acetate	<0.5	mg/Kg	SW846 8260C				
Vinyl chloride	<0.05	mg/Kg	SW846 8260C				
cis-1,2-Dichloroethene	<0.05	mg/Kg	SW846 8260C				
cis-1,3-Dichloropropene	<0.05	mg/Kg	SW846 8260C				
n-Butylbenzene	<0.05	mg/Kg	SW846 8260C				
n-Propylbenzene	<0.05	mg/Kg	SW846 8260C				
sec-Butylbenzene	<0.05	mg/Kg	SW846 8260C				

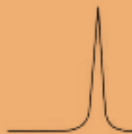
Surrogate	Recovery	Method
1,2-Dichloroethane-d4	104	SW846 8260C
4-Bromofluorobenzene	97	SW846 8260C
Dibromofluoromethane	99	SW846 8260C
Toluene-d8	98	SW846 8260C

SPECTRA LABORATORIES


 Jeffrey Cooper, Laboratory Manager
 a14 jac

Page 4 of 10





07/12/2017

Eco Compliance
1823 Bremerton Ave NE
Renton, WA 98059-3954
Attn: Bill Kane


Project: Chris
Client ID: 4
Sample Matrix: Soil
Date Sampled: 07/11/2017
Date Received: 07/11/2017
Spectra Project: 2017070178
Spectra Number:3

Rush

Analyte	Result	Units	Method	Analyte	Result	Units	Method
1,1,1,2-Tetrachloroethane	<0.05	mg/Kg	SW846 8260C	2-Butanone (MEK)	<0.5	mg/Kg	SW846 8260C
1,1,1-Trichloroethane	<0.05	mg/Kg	SW846 8260C	2-Chlorotoluene	<0.05	mg/Kg	SW846 8260C
1,1,1,2,2-Tetrachloroethane	<0.05	mg/Kg	SW846 8260C	2-Hexanone (MBK)	<0.5	mg/Kg	SW846 8260C
1,1,2-Trichloroethane	<0.05	mg/Kg	SW846 8260C	4-Chlorotoluene	<0.05	mg/Kg	SW846 8260C
1,1-Dichloroethane	<0.05	mg/Kg	SW846 8260C	4-Isopropyltoluene	<0.05	mg/Kg	SW846 8260C
1,1-Dichloroethene	<0.05	mg/Kg	SW846 8260C	4-methyl-2-pentanone	<0.5	mg/Kg	SW846 8260C
1,1-Dichloropropene	<0.05	mg/Kg	SW846 8260C	Acetone	<0.5	mg/Kg	SW846 8260C
1,2,3-Trichlorobenzene	<0.05	mg/Kg	SW846 8260C	Acrolein	<0.5	mg/Kg	SW846 8260C
1,2,3-Trichloropropane	<0.05	mg/Kg	SW846 8260C	Acrylonitrile	<0.5	mg/Kg	SW846 8260C
1,2,4-Trichlorobenzene	<0.05	mg/Kg	SW846 8260C	Benzene	<0.05	mg/Kg	SW846 8260C
1,2,4-Trimethylbenzene	<0.05	mg/Kg	SW846 8260C	Bromobenzene	<0.05	mg/Kg	SW846 8260C
1,2-Dibromo3Chloropropane	<0.5	mg/Kg	SW846 8260C	Bromochloromethane	<0.05	mg/Kg	SW846 8260C
1,2-Dibromoethane (EDB)	<0.05	mg/Kg	SW846 8260C	Bromodichloromethane	<0.05	mg/Kg	SW846 8260C
1,2-Dichlorobenzene	<0.05	mg/Kg	SW846 8260C	Bromoform	<0.05	mg/Kg	SW846 8260C
1,2-Dichloroethane	<0.05	mg/Kg	SW846 8260C	Bromomethane	<0.05	mg/Kg	SW846 8260C
1,2-Dichloropropane	<0.05	mg/Kg	SW846 8260C	Carbon Tetrachloride	<0.05	mg/Kg	SW846 8260C
1,3,5-Trimethylbenzene	<0.05	mg/Kg	SW846 8260C	Chlorobenzene	<0.05	mg/Kg	SW846 8260C
1,3-Dichlorobenzene	<0.05	mg/Kg	SW846 8260C	Chlorodibromomethane	<0.05	mg/Kg	SW846 8260C
1,3-Dichloropropane	<0.05	mg/Kg	SW846 8260C	Chloroethane	<0.05	mg/Kg	SW846 8260C
1,4-Dichlorobenzene	<0.05	mg/Kg	SW846 8260C	Chloroform	<0.05	mg/Kg	SW846 8260C
2,2-Dichloropropane	<0.05	mg/Kg	SW846 8260C	Chloromethane	<0.05	mg/Kg	SW846 8260C

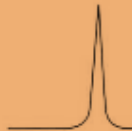
Surrogate	Recovery	Method
1,2-Dichloroethane-d1	102	SW846 8260C
4-Bromofluorobenzene	100	SW846 8260C
Dibromofluoromethane	99	SW846 8260C
Toluene-d8	98	SW846 8260C

SPECTRA LABORATORIES


Jeffrey Cooper, Laboratory Manager
a14 jac

Page 5 of 10





07/12/2017

Eco Compliance
 1823 Bremerton Ave NE
 Renton, WA 98059-3954
 Attn: Bill Kane

Project: Chris
 Client ID: 4
 Sample Matrix: Soil
 Date Sampled: 07/11/2017
 Date Received: 07/11/2017
 Spectra Project: 2017070178
 Spectra Number: 3
 Rush

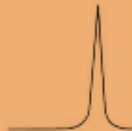
Analyte	Result	Units	Method	Analyte	Result	Units	Method
Dibromomethane	<0.05	mg/Kg	SW846 8260C	tert-Butylbenzene	<0.05	mg/Kg	SW846 8260C
Dichlorodifluoromethane	<0.05	mg/Kg	SW846 8260C	trans-1,2-Dichloroethene	<0.05	mg/Kg	SW846 8260C
Ethylbenzene	<0.05	mg/Kg	SW846 8260C	trans-1,3-Dichloropropene	<0.05	mg/Kg	SW846 8260C
Hexachlorobutadiene	<0.05	mg/Kg	SW846 8260C				
Isopropylbenzene	<0.05	mg/Kg	SW846 8260C				
Methyl-tert-Butyl Ether	<0.05	mg/Kg	SW846 8260C				
Methylene chloride	<0.25	mg/Kg	SW846 8260C				
Naphthalene	<0.05	mg/Kg	SW846 8260C				
Styrene	<0.05	mg/Kg	SW846 8260C				
Tetrachloroethene	<0.05	mg/Kg	SW846 8260C				
Toluene	<0.05	mg/Kg	SW846 8260C				
Total Xylenes	<0.1	mg/Kg	SW846 8260C				
Trichloroethene	<0.05	mg/Kg	SW846 8260C				
Trichlorofluoromethane	<0.05	mg/Kg	SW846 8260C				
Vinyl Acetate	<0.5	mg/Kg	SW846 8260C				
Vinyl chloride	<0.05	mg/Kg	SW846 8260C				
cis-1,2-Dichloroethene	<0.05	mg/Kg	SW846 8260C				
cis-1,3-Dichloropropene	<0.05	mg/Kg	SW846 8260C				
n-Butylbenzene	<0.05	mg/Kg	SW846 8260C				
n-Propylbenzene	<0.05	mg/Kg	SW846 8260C				
sec-Butylbenzene	<0.05	mg/Kg	SW846 8260C				

Surrogate	Recovery	Method
1,2-Dichloroethane-d4	102	SW846 8260C
4-Bromofluorobenzene	100	SW846 8260C
Dibromofluoromethane	99	SW846 8260C
Toluene-d8	98	SW846 8260C

SPECTRA LABORATORIES


 Jeffrey Cooper, Laboratory Manager
 #14/jsc





SPECTRA Laboratories

...Where experience matters

2221 Ross Way • Tacoma, WA 98421 • (253) 272-4850 • Fax (253) 572-9838 • www.spectra-lab.com

07/12/2017

Eco Compliance
1823 Bremerton Ave NE
Renton, WA 98059-3954
Attn: Bill Kane


Project: Chris
Client ID: 5
Sample Matrix: Soil
Date Sampled: 07/11/2017
Date Received: 07/11/2017
Spectra Project: 2017070178
Spectra Number: 4

Rush

Analyte	Result	Units	Method	Analyte	Result	Units	Method
1,1,1,2-Tetrachloroethane	<0.05	mg/Kg	SW846 8260C	2-Butanone (MEK)	<0.5	mg/Kg	SW846 8260C
1,1,1-Trichloroethane	<0.05	mg/Kg	SW846 8260C	2-Chlorotoluene	<0.05	mg/Kg	SW846 8260C
1,1,2,2-Tetrachloroethane	<0.05	mg/Kg	SW846 8260C	2-Hexanone (MBK)	<0.5	mg/Kg	SW846 8260C
1,1,2-Trichloroethane	<0.05	mg/Kg	SW846 8260C	4-Chlorotoluene	<0.05	mg/Kg	SW846 8260C
1,1-Dichloroethane	<0.05	mg/Kg	SW846 8260C	4-Isopropyltoluene	<0.05	mg/Kg	SW846 8260C
1,1-Dichloroethene	<0.05	mg/Kg	SW846 8260C	4-methyl-2-pentanone	<0.5	mg/Kg	SW846 8260C
1,1-Dichloropropene	<0.05	mg/Kg	SW846 8260C	Acetone	<0.5	mg/Kg	SW846 8260C
1,2,3-Trichlorobenzene	<0.05	mg/Kg	SW846 8260C	Acrolein	<0.5	mg/Kg	SW846 8260C
1,2,3-Trichloropropane	<0.05	mg/Kg	SW846 8260C	Acrylonitrile	<0.5	mg/Kg	SW846 8260C
1,2,4-Trichlorobenzene	<0.05	mg/Kg	SW846 8260C	Benzene	<0.05	mg/Kg	SW846 8260C
1,2,4-Trimethylbenzene	<0.05	mg/Kg	SW846 8260C	Bromobenzene	<0.05	mg/Kg	SW846 8260C
1,2-Dibromo3Chloropropane	<0.5	mg/Kg	SW846 8260C	Bromochloromethane	<0.05	mg/Kg	SW846 8260C
1,2-Dibromoethane (EDB)	<0.05	mg/Kg	SW846 8260C	Bromodichloromethane	<0.05	mg/Kg	SW846 8260C
1,2-Dichlorobenzene	<0.05	mg/Kg	SW846 8260C	Bromoform	<0.05	mg/Kg	SW846 8260C
1,2-Dichloroethane	<0.05	mg/Kg	SW846 8260C	Bromomethane	<0.05	mg/Kg	SW846 8260C
1,2-Dichloropropane	<0.05	mg/Kg	SW846 8260C	Carbon Tetrachloride	<0.05	mg/Kg	SW846 8260C
1,3,5-Trimethylbenzene	<0.05	mg/Kg	SW846 8260C	Chlorobenzene	<0.05	mg/Kg	SW846 8260C
1,3-Dichlorobenzene	<0.05	mg/Kg	SW846 8260C	Chlorodibromomethane	<0.05	mg/Kg	SW846 8260C
1,3-Dichloropropane	<0.05	mg/Kg	SW846 8260C	Chloroethane	<0.05	mg/Kg	SW846 8260C
1,4-Dichlorobenzene	<0.05	mg/Kg	SW846 8260C	Chloroform	<0.05	mg/Kg	SW846 8260C
2,2-Dichloropropane	<0.05	mg/Kg	SW846 8260C	Chloromethane	<0.05	mg/Kg	SW846 8260C

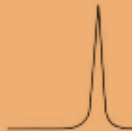
Surrogate	Recovery	Method
1,2-Dichloroethane-d4	103	SW846 8260C
4-Bromofluorobenzene	96	SW846 8260C
Dibromofluoromethane	96	SW846 8260C
Toluene-d8	96	SW846 8260C

SPECTRA LABORATORIES


Jeffrey Cooper, Laboratory Manager
jjc

Page 7 of 10





07/12/2017

Eco Compliance
 1823 Bremerton Ave NE
 Renton, WA 98059-3954
 Attn: Bill Kanc


Project: Chris
 Client ID: 5
 Sample Matrix: Soil
 Date Sampled: 07/11/2017
 Date Received: 07/11/2017
 Spectra Project: 2017070178
 Spectra Number: 4

Rush

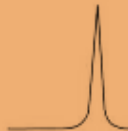
Analyte	Result	Units	Method	Analyte	Result	Units	Method
Dibromomethane	<0.05	mg/Kg	SW846 8260C	tert-Butylbenzene	<0.05	mg/Kg	SW846 8260C
Dichlorodifluoromethane	<0.05	mg/Kg	SW846 8260C	trans-1,2-Dichloroethene	<0.05	mg/Kg	SW846 8260C
Ethylbenzene	<0.05	mg/Kg	SW846 8260C	trans-1,3-Dichloropropene	<0.05	mg/Kg	SW846 8260C
Hexachlorobutadiene	<0.05	mg/Kg	SW846 8260C				
Isopropylbenzene	<0.05	mg/Kg	SW846 8260C				
Methyl-tert-Butyl Ether	<0.05	mg/Kg	SW846 8260C				
Methylene chloride	<0.25	mg/Kg	SW846 8260C				
Naphthalene	<0.05	mg/Kg	SW846 8260C				
Styrene	<0.05	mg/Kg	SW846 8260C				
Tetrachloroethene	<0.05	mg/Kg	SW846 8260C				
Toluene	<0.05	mg/Kg	SW846 8260C				
Total Xylenes	<0.1	mg/Kg	SW846 8260C				
Trichloroethene	<0.05	mg/Kg	SW846 8260C				
Trichlorofluoromethane	<0.05	mg/Kg	SW846 8260C				
Vinyl Acetate	<0.5	mg/Kg	SW846 8260C				
Vinyl chloride	<0.05	mg/Kg	SW846 8260C				
cis-1,2-Dichloroethene	<0.05	mg/Kg	SW846 8260C				
cis-1,3-Dichloropropene	<0.05	mg/Kg	SW846 8260C				
n-Butylbenzene	<0.05	mg/Kg	SW846 8260C				
n-Propylbenzene	<0.05	mg/Kg	SW846 8260C				
sec-Butylbenzene	<0.05	mg/Kg	SW846 8260C				

Surrogate	Recovery	Method
1,2-Dichloroethane-d4	103	SW846 8260C
4-Bromofluorobenzene	96	SW846 8260C
Dibromofluoromethane	96	SW846 8260C
Toluene-d8	96	SW846 8260C

SPECTRA LABORATORIES


 Jeffrey Cooper, Laboratory Manager
 a14/jac





SPECTRA Laboratories

...Where experience matters

2221 Ross Way • Tacoma, WA 98421 • (253) 272-4850 • Fax (253) 572-9838 • www.spectra-lab.com

07/12/2017

Eco Compliance
1823 Bremerton Ave NE
Renton, WA 98059-3954
Attn: Bill Kane


Project: Chris
Client ID: 6
Sample Matrix: Soil
Date Sampled: 07/11/2017
Date Received: 07/11/2017
Spectra Project: 2017070178
Spectra Number: 5

Rush

Analyte	Result	Units	Method	Analyte	Result	Units	Method
1,1,1,2-Tetrachloroethane	<0.05	mg/Kg	SW846 8260C	2-Butanone (MEK)	<0.5	mg/Kg	SW846 8260C
1,1,1-Trichloroethane	<0.05	mg/Kg	SW846 8260C	2-Chlorotoluene	<0.05	mg/Kg	SW846 8260C
1,1,2,2-Tetrachloroethane	<0.05	mg/Kg	SW846 8260C	2-Hexanone (MBK)	<0.5	mg/Kg	SW846 8260C
1,1,2-Trichloroethane	<0.05	mg/Kg	SW846 8260C	4-Chlorotoluene	<0.05	mg/Kg	SW846 8260C
1,1-Dichloroethane	<0.05	mg/Kg	SW846 8260C	4-Isopropyltoluene	<0.05	mg/Kg	SW846 8260C
1,1-Dichloroethene	<0.05	mg/Kg	SW846 8260C	4-methyl-2-pentanone	<0.5	mg/Kg	SW846 8260C
1,1-Dichloropropene	<0.05	mg/Kg	SW846 8260C	Acetone	<0.5	mg/Kg	SW846 8260C
1,2,3-Trichlorobenzene	<0.05	mg/Kg	SW846 8260C	Acrolein	<0.5	mg/Kg	SW846 8260C
1,2,3-Trichloropropane	<0.05	mg/Kg	SW846 8260C	Acrylonitrile	<0.5	mg/Kg	SW846 8260C
1,2,4-Trichlorobenzene	<0.05	mg/Kg	SW846 8260C	Benzene	<0.05	mg/Kg	SW846 8260C
1,2,4-Trimethylbenzene	<0.05	mg/Kg	SW846 8260C	Bromobenzene	<0.05	mg/Kg	SW846 8260C
1,2-Dibromo3Chloropropane	<0.5	mg/Kg	SW846 8260C	Bromochloromethane	<0.05	mg/Kg	SW846 8260C
1,2-Dibromoethane (EDB)	<0.05	mg/Kg	SW846 8260C	Bromodichloromethane	<0.05	mg/Kg	SW846 8260C
1,2-Dichlorobenzene	<0.05	mg/Kg	SW846 8260C	Bromoform	<0.05	mg/Kg	SW846 8260C
1,2-Dichloroethane	<0.05	mg/Kg	SW846 8260C	Bromomethane	<0.05	mg/Kg	SW846 8260C
1,2-Dichloropropane	<0.05	mg/Kg	SW846 8260C	Carbon Tetrachloride	<0.05	mg/Kg	SW846 8260C
1,3,5-Trimethylbenzene	<0.05	mg/Kg	SW846 8260C	Chlorobenzene	<0.05	mg/Kg	SW846 8260C
1,3-Dichlorobenzene	<0.05	mg/Kg	SW846 8260C	Chlorodibromomethane	<0.05	mg/Kg	SW846 8260C
1,3-Dichloropropane	<0.05	mg/Kg	SW846 8260C	Chloroethane	<0.05	mg/Kg	SW846 8260C
1,4-Dichlorobenzene	<0.05	mg/Kg	SW846 8260C	Chloroform	<0.05	mg/Kg	SW846 8260C
2,2-Dichloropropane	<0.05	mg/Kg	SW846 8260C	Chloromethane	<0.05	mg/Kg	SW846 8260C

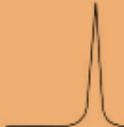
Surrogate	Recovery	Method
1,2-Dichloroethane-d4	109	SW846 8260C
4-Bromofluorobenzene	100	SW846 8260C
Dibromofluoromethane	100	SW846 8260C
Toluene-d8	98	SW846 8260C

SPECTRA LABORATORIES


Jeffrey Cooper, Laboratory Manager
al jac

Page 9 of 10





SPECTRA Laboratories

...Where experience matters

2221 Ross Way • Tacoma, WA 98421 • (253) 272-4850 • Fax (253) 572-9838 • www.spectra-lab.com

07/12/2017

Eco Compliance
 1823 Bremerton Ave NE
 Renton, WA 98059-3954
 Attn: Bill Kane

Project: Chris
 Client ID: 6
 Sample Matrix: Soil
 Date Sampled: 07/11/2017
 Date Received: 07/11/2017
 Spectra Project: 2017070178
 Spectra Number: 5

Rush

Analyte	Result	Units	Method	Analyte	Result	Units	Method
Dibromomethane	<0.05	mg/Kg	SW846 8260C	tert-Butylbenzene	<0.05	mg/Kg	SW846 8260C
Dichlorodifluoromethane	<0.05	mg/Kg	SW846 8260C	trans-1,2-Dichloroethene	<0.05	mg/Kg	SW846 8260C
Ethylbenzene	<0.05	mg/Kg	SW846 8260C	trans-1,3-Dichloropropene	<0.05	mg/Kg	SW846 8260C
Hexachlorobutadiene	<0.05	mg/Kg	SW846 8260C				
Isopropylbenzene	<0.05	mg/Kg	SW846 8260C				
Methyl-tert-Butyl Ether	<0.05	mg/Kg	SW846 8260C				
Methylene chloride	<0.25	mg/Kg	SW846 8260C				
Naphthalene	<0.05	mg/Kg	SW846 8260C				
Styrene	<0.05	mg/Kg	SW846 8260C				
Tetrachloroethene	<0.05	mg/Kg	SW846 8260C				
Toluene	<0.05	mg/Kg	SW846 8260C				
Total Xylenes	<0.1	mg/Kg	SW846 8260C				
Trichloroethene	<0.05	mg/Kg	SW846 8260C				
Trichlorofluoromethane	<0.05	mg/Kg	SW846 8260C				
Vinyl Acetate	<0.5	mg/Kg	SW846 8260C				
Vinyl chloride	<0.05	mg/Kg	SW846 8260C				
cis-1,2-Dichloroethene	<0.05	mg/Kg	SW846 8260C				
cis-1,3-Dichloropropene	<0.05	mg/Kg	SW846 8260C				
n-Butylbenzene	<0.05	mg/Kg	SW846 8260C				
n-Propylbenzene	<0.05	mg/Kg	SW846 8260C				
sec-Butylbenzene	<0.05	mg/Kg	SW846 8260C				

Surrogate	Recovery	Method
1,2-Dichloroethane-d4	109	SW846 8260C
4-Bromofluorobenzene	100	SW846 8260C
Dibromofluoromethane	100	SW846 8260C
Toluene-d8	98	SW846 8260C

SPECTRA LABORATORIES


 Jeffrey Cooper, Laboratory Manager
 jcooper@spectralab.com

Page 10 of 10





SPECTRA Laboratories

2221 Ross Way, Tacoma, WA 98421
(253) 272-4850 Fax (253) 572-9838
www.spectra-lab.com info@spectra-lab.com

SPECIAL INSTRUCTIONS/COMMENTS:

By Thursday PM

CHAIN OF CUSTODY

SPECTRA PROJECT #

201707078

Return Samples: Y N Page *1* of *1*

STANDARD

RUSH

ADDRESS:

ADDRESS CHANGE

CLIENT: *Eco Compliance*

PROJECT: *Chris*

CONTACT: *Bill Kane*

SAMPLED BY: *Bill Kane*

PHONE: *206-715-1396* FAX:

e-MAIL: *bill@ecocompliance.biz* Prefer FAX or e-MAIL

PURCHASE ORDER #

HYDROCARBONS	ORGANICS	METALS	OTHER
NWTPH-HClO	8082/608 PCB	TCP METALS RCRA 8	SOLIDS (SPECIFY)
BTEX	8270 PAH/FNA	TCP METALS (SPECIFY)	BOB
BTEX/NWTPH-G	8270-825 SEMI VOA	TOTAL METALS (SPECIFY)	FLASH POINT
NWTPH-G	8280 CHLOR SOLVENTS	TOTAL METALS RCRA 8	TURBIDITY
NWTPH-Dx	8280/824 VOA	TOTAL METALS RCRA 8	TX/TOX/EOX
1664 SGT-HEM (T-PH)	1664 HEM (FOG)		PH 9040/9045

NUMBER OF CONTAINERS	DATE SAMPLED	TIME SAMPLED	MATRIX
3	7-11-12		Soil
3			
3			
3			
3			

LAB USE ONLY	SIGNATURE	PRINTED NAME	COMPANY	DATE	TIME
RELINQUISHED BY	<i>Bill Kane</i>	<i>Bill Kane</i>	<i>Eco Compliance</i>	<i>7-11-12</i>	<i>10:25 AM</i>
RECEIVED BY		<i>Garthyn Paulby</i>	<i>Spectra</i>	<i>7/17</i>	<i>10:25 AM</i>
RELINQUISHED BY					
RECEIVED BY					

Payment Terms: Net 30 days. Past due accounts subject to 1.12% per month interest. Customer agrees to pay all costs of collection including reasonable attorney's fees and all other costs of collection regardless of whether suit is filed in Pierce Co., WA venue. Spectra Laboratories, LLC