

SUBMITTED TO:
The Port of Friday Harbor
204 Front Street
Friday Harbor, WA 98250

BY:
Shannon & Wilson, Inc.
400 N. 34th Street, Suite 100
Seattle, WA 98103

(206) 632-8020
www.shannonwilson.com

CONCEPTUAL SITE MODEL AND DATA GAPS REPORT
Former Jensen Shipyard
FRIDAY HARBOR, WASHINGTON

Submitted To: The Port of Friday Harbor
204 Front Street
Friday Harbor, WA 98250
Attn: Mr. Todd Nicholson


Subject: CONCEPTUAL SITE MODEL AND DATA GAPS REPORT, FORMER JENSEN SHIPYARD, FRIDAY HARBOR, WASHINGTON

Shannon & Wilson prepared this report and participated in this project as a consultant to The Port of Friday Harbor. Our scope of services was specified in the Scope of Work dated January 4, 2019. This report presents a conceptual site model and data gaps in existing reports, and was prepared by the undersigned.

We appreciate the opportunity to be of service to you on this project. If you have questions concerning this report, or we may be of further service, please contact us.

Sincerely,

SHANNON & WILSON, INC.


Blaine Nesbit
Environmental Staff



SCOTT W. GAULKE

Scott W. Gaulke, PE, LHG
Vice President

BON:SWG/bon

EXECUTIVE SUMMARY

The Jensen Shipyard property has been a marina for nearly a century and has had multiple environmental studies completed on it in the last few years. The Port of Friday Harbor has recently purchased the property and is planning to complete renovations to develop the property while simultaneously addressing environmental concerns.

This report provides a conceptual site model (CSM) for the upland portion of the site based upon existing data, as well as provides a summary of data gaps in the current available information. The report focuses on the uplands portion of the property and does not include known contamination associated with marine sediments. The information in this report is based on three Whatcom Environmental Services reports including a 2017 Phase I Environmental Site Assessment (ESA), a 2018 Initial Investigation Report, and a 2018 Draft Remedial Investigation (RI) Report.

The CSM includes primary contaminant sources associated with boat repair and maintenance, including paint stripping and application, former aboveground and underground storage tanks (USTs), stormwater collection and transport, and creosote-treated wood. Analytical data gaps associated with the horizontal and/or vertical extent of contamination were identified, as well as historical data gaps associated with site use, development, and recordkeeping.

1 Introduction1

1.1 Site History Summary1

1.2 Previous Reports1

1.3 Physical Features of the Site2

1.4 Study Area Boundaries2

1.5 Report Organization2

2 Physical Processes Conceptual Site Model (CSM)2

2.1 Primary Source Areas3

2.1.1 Former Orcas Power and Light Company (OPALCO) Pad
Western Property Edge Surface Contamination (Carcinogenic
Polycyclic Aromatic Hydrocarbons [cPAHs] and Metals)3

2.1.2 Boat Lift Work Area (BLWA) Contamination (Carcinogenic
Polycyclic Aromatic Hydrocarbons [cPAHs], Metals, and
Diesel-range Petroleum Hydrocarbons [TPH-D])3

2.1.3 Ship Rail Work Area (SRWA) (Metals, Carcinogenic Polycyclic
Aromatic Hydrocarbons [cPAHs] and Diesel-range Petroleum
Hydrocarbons [TPH-D])3

2.1.4 Former Aboveground Storage Tank (AST) Area (Diesel-range
Petroleum Hydrocarbons [TPH-D])4

2.1.5 Stormwater Pond4

2.1.6 Former Underground Storage Tank (UST) Area4

2.1.7 Former Debris Dumping Area4

2.2 Release and Transport Mechanisms5

2.3 Secondary Sources and Transport Mechanisms6

3 Exposure Mediums, Exposure Pathways, and Potential Receptors6

4 Data Gaps Analysis7

4.1 Whatcom Environmental Services Initial Investigation7

4.2 Remedial Investigation (RI)7

4.3 Soil Data Summary8

4.4 Groundwater Data Summary8

4.5 Data Gaps8

4.5.1 Soil Data Gaps8

4.5.2 Groundwater Data Gaps10
4.5.3 Additional Exploration Recommendations10
5 References11

Figures

- Figure 1: Vicinity Map
- Figure 2: Site Map
- Figure 3: Uplands Primary Source Areas
- Figure 4: Preliminary Uplands Conceptual Site Model
- Figure 5: Data Gaps

Appendices

Appendix A: Analytical Data Tables and Figures from Previous Whatcom Environmental Services Reports

Important Information

CONTENTS

ACRONYMS

AST	aboveground storage tank
bgs	below ground surface
BLWA	Boat Lift Work Area
cPAHs	carcinogenic polycyclic aromatic hydrocarbons
CSM	conceptual site model
ESA	Environmental Site Assessment
Leon	Leon Environmental LLC
MTCA	Model Toxics Control Act
OPALCO	Orcas Power and Light Company
PAH	polycyclic aromatic hydrocarbon
RI	Remedial Investigation
SRWA	Ship Rail Work Area
the Site	1293 Turn Point Road, Friday Harbor, Washington.
TPH-D	diesel-range petroleum hydrocarbons
TPH-O	oil-range petroleum hydrocarbons
UST	underground storage tank

1 INTRODUCTION

This CSM and Data Gaps Report has been completed for the uplands portion of the former Jensen Shipyard Property located at 1293 Turn Point Road, Friday Harbor, Washington (the Site). A Vicinity Map is provided as Figure 1, and a Site Map is provided as Figure 2. The subject property was recently acquired by the Port of Friday Harbor. The Port of Friday Harbor has obtained an Integrated Planning Grant to facilitate this study, among other remedial actions and investigations.

The purpose of this CSM and Data Gaps Report is to present an overview of the known contamination on the site and its primary sources, release mechanisms, transport mechanisms, and potential receptors. Data gaps are analyzed to determine which areas may benefit from future additional investigation, and where data is missing to an extent that it impacts the understanding of the Site. The CSM will be refined as more data from future investigations and studies becomes available.

1.1 Site History Summary

The Site is located at 1293 Turn Point Road in Friday Harbor and anecdotal evidence suggests it has been operating as a Shipyard since as early as 1910 (Whatcom Environmental Services, 2017). Originally wooden boats were built on the subject property, but then operations transitioned to boat maintenance and repair as wooden boats were replaced with non-wood vessels. The subject property remains a shipyard and has expanded and developed over the past century. Adjacent properties have had similar histories, serving as marinas or commercial/industrial businesses along the shoreline.

1.2 Previous Reports

Whatcom Environmental Services has completed three reports on the uplands of the subject property:

- Phase I Environmental Site Assessment, Jensen's Shipyard, November (2017)
- Initial Investigation Report, Jensen's Shipyard, April (2018a)
- Draft Remedial Investigation Report, Jensen's Shipyard and Marina, October (2018b)

Information provided in investigation reports is used as the basis for the evaluation of data gaps and developing the CSM in this report. The Initial Investigation Report explored recognized environmental conditions found in the Phase I ESA by taking primarily surface

samples, and the draft RI Report further explored the conclusions of the initial investigation. Analytical data tables and figures from these reports are provided in Appendix A.

1.3 Physical Features of the Site

The subject property is approximately 4.8 acres and is comprised of parcel 351341005000. The Site is zoned as Rural Industrial. There are currently seven structures on the subject property including a storage building, machine shop, office/retail building, derelict boat building structure, oil storage building, a wash water treatment building, abandoned dumpsite, and an abandoned cabin. Surfaces of the Site are largely unpaved, with gravel as the primary ground surface in the boat work areas, and grass and foliage covering approximately 2 acres of undeveloped land. Marina features on the subject property include a pier, bulkhead, boat pullout area with a travel lift, and railways into the water. Generally, the previous owner of the Site deferred many repairs, and many manmade features are in poor condition. Other features include a lined stormwater detention pond, paved laydown area, and parking. Select features are presented in Figure 3.

1.4 Study Area Boundaries

The study area is confined to the uplands portion of the shipyard, parcel 351341005000. This report does not consider sediment sampling or the shoreline area of the adjacent parcels in developing the CSM. The in-water portion of the shipyard has been evaluated in a draft CSM and data gaps report by Leon Environmental LLC (Leon, 2019).

1.5 Report Organization

This report initially describes the physical, chemical, and biological processes that control the release, transport, migration, and actual or potential impacts of contamination on site. A CSM based on available previous reports is presented. The CSM outlines primary areas of concern, primary sources, transport mechanisms, secondary sources, secondary transport mechanisms, and potential impacts. The report then details exposure mediums and pathways. In addition, the report uses the CSM to identify potential data gaps in the previous investigations and offers recommendations on future investigation.

2 PHYSICAL PROCESSES CONCEPTUAL SITE MODEL (CSM)

The physical processes CSM categorizes areas on the Site as primary source areas. These areas contain one or more sources which can reasonably be assumed to be responsible for known contamination in the area. Release and transport mechanisms are then detailed.

This information can be used to interpret the nature and possible extent of contamination where possible, and exposes data gaps when the extent cannot reasonably be determined.

2.1 Primary Source Areas

The uplands of the Site are divided into multiple primary source areas (Figure 3). Though each source is connected to shipyard work, differences in areas may include depth of contamination and primary source. An evaluation of the data gaps within these primary source areas is provided in Section 4.5.

2.1.1 Former Orcas Power and Light Company (OPALCO) Pad Western Property Edge Surface Contamination (Carcinogenic Polycyclic Aromatic Hydrocarbons [cPAHs] and Metals)

The former OPALCO storage area is in the western portion of the site and extends north to the shoreline. Contamination in this area includes surface contamination of cPAHs, cadmium, copper, lead, and zinc. The contamination is likely due to shipyard operations in the area, including stripping paint. Additionally, OPALCO may have stored creosote-treated wood. The OPALCO building burned down and only the building foundation remains, contributing to the cPAH contamination in the area.

2.1.2 Boat Lift Work Area (BLWA) Contamination (Carcinogenic Polycyclic Aromatic Hydrocarbons [cPAHs], Metals, and Diesel-range Petroleum Hydrocarbons [TPH-D])

The BLWA is near the shoreline. cPAHs and zinc contamination exists in the surface soil. Copper, lead, and TPH-D are present a few feet deep, and are not vertically limited. Metals contamination is likely from stripping and applying paint in the work area. cPAH contamination is likely from the presence of treated wood in the area or draining bilges, which frequently contain engine oil or lubricants. TPH-D contamination may be from dumping of fuel, draining of bilges, or leaks while working on boats in the work area. Fill was likely brought in at some point to elevate this area, which may have been contaminated from its former area of use. The limits of contamination in the BLWA are not defined to the south.

2.1.3 Ship Rail Work Area (SRWA) (Metals, Carcinogenic Polycyclic Aromatic Hydrocarbons [cPAHs] and Diesel-range Petroleum Hydrocarbons [TPH-D])

The SRWA is to the west of the boat building, a structure where boats were historically built and repaired. A rail line exists to the east of the pier. Surface contamination includes copper and zinc, likely from the paint stripping operations, or loose paint flaking off boats during their transport. Deeper contamination includes cPAHs, arsenic, lead, mercury, and

TPH-D. This contamination can be attributed to the boat building or maintenance activities in the nearby structure, paint chips, and leaks from boats being transported or stored on the rail line ramp. Fill was likely brought in at some point to develop the shoreline of this area, which may have been contaminated from its former area of use. The arsenic contamination may be an artifact of redox conditions created by TPH-D contamination. After boats were removed from the water on the rail line, the bilges may have been drained on site. The bilge water likely contained oil and lubricants, which contributed to the spread of cPAH and TPH-D contamination.

2.1.4 Former Aboveground Storage Tank (AST) Area (Diesel-range Petroleum Hydrocarbons [TPH-D])

The former AST area has TPH-D and oil-range petroleum hydrocarbons (TPH-O) contamination in soil and groundwater. This is likely due to leaks and/or spills from the AST, or during filling operations due to poor maintenance. The leaks and/or spills likely contacted soil and continued deeper, migrating to groundwater. Petroleum is present in groundwater at MW-1. Surface soil contamination of cadmium, copper, and lead is also present at MW-1. The shop building has a drain with an unknown outfall, which may be contributing to the local contamination.

2.1.5 Stormwater Pond

The existing stormwater pond collects and detains stormwater from the site. The pond contains elevated concentrations of metals. The pond is lined and relies primarily on evaporation or manual removal of stormwater. There is a 6-inch overflow outfall pipe, which releases on the shoreline. If the pond has overflowed or leaked, it could lead to localized releases of the metals or petroleum if present; however, no documentation of the stormwater pond overflowing via the outfall has been found. No sampling of soil or groundwater was performed near the pond.

2.1.6 Former Underground Storage Tank (UST) Area

A former UST existed east of the boat building structure. Two test pits were dug in the footprint of the former AST and revealed no indication of petroleum contamination. If the UST ever leaked, the contamination was apparently removed during the removal of the UST. MW-5 was sampled for groundwater near the former UST and did not have detections of petroleum contamination.

2.1.7 Former Debris Dumping Area

An area formerly used for dumping of miscellaneous boat parts and broken batteries were observed during the Phase I ESA. This area is near the shoreline to the east. Follow-up

surface sampling and test pit sampling revealed elevated levels of petroleum and lead in one sample in the former dump area. Groundwater has not been sampled in this area, and soil deeper than 2.5 feet below ground surface (bgs) has not been investigated.

2.2 Release and Transport Mechanisms

The potential sources of contamination and transport mechanisms within the source areas include:

- **Paint stripping and application:** Paint stripping and application is a source of heavy metal contamination including lead, copper, nickel, and cadmium. Marine paint has historically contained metals to provide antifouling, anticorrosive, biocide, and longevity properties to paint. Paint chips can fall to the ground and be mobilized by stormwater, wind, and vehicles moving on the site. Additionally, metals can leach from paint into groundwater and stormwater.
- **Creosote-treated wood:** Treated wood has been used on the subject property as railroad ties, pier columns, and has been likely stored on the site. Creosote is known to contain polycyclic aromatic hydrocarbons (PAHs) and diesel/oil-range hydrocarbons. Deteriorating or leaching creosote wood from the pier, railroad ties, or wood storage could deteriorate and be transported by wind and stormwater.
- **Boat building and maintenance:** Boat maintenance may include working with petroleum products including diesel and oil. Paints containing metals and lubricants containing cPAHs were also likely used. Over the course of the shipyard's history, it is likely that some amount of petroleum, paint, lubricants, or other maintenance-related fluids were spilled or drained in the area where work was being conducted, likely near the lift where the boats are removed from the water, maintenance and boat construction buildings, and the machine shop. A large source of these releases may be from purging bilge water as boats were hauled out of the water, which could contain engine oil, lubricants, fuel, coolant, and other hazardous substances. The testing and maintenance of older two-stroke engines could contribute to the spread of petroleum and PAHs through the coolant water mobilizing contaminants across the site.
- **The machine shop contains a drain which has an unknown outlet location.** The machine shop drain has been sampled to contain TPH-D, TPH-O, volatile organic compounds, semi-volatile organic compounds, and metals. The leaks, spills, and drains can cause soil, surface water, or groundwater contamination.
- **Former AST:** Evidence of an AST was observed south of the machine shop during the Phase I ESA. Elevated concentrations of TPH-D and TPH-O were found near the AST. This is likely due to leaks or spills associated with the operation of the AST, possibly during fueling, or leaks due to poor maintenance. Leaks have contaminated the soil in the area of the former AST and have created detectable concentrations of petroleum in groundwater downgradient of the AST.

- Dumping: Evidence of dumping miscellaneous boat parts and batteries was observed on the site during the Phase I ESA. Leaks from broken batteries could be a source of lead and copper, as well as other metals. Lubricants on engine parts could be a source of petroleum. Leaks from old radiators could contain coolant which may be a source of lead and copper or other metals. These parts could drip onto the soil, contaminating soil and groundwater over time. Rain would mobilize leaking fluids via infiltration to groundwater and overland to surface water.

2.3 Secondary Sources and Transport Mechanisms

The primary sources and mechanisms above may generate secondary sources including contaminated stormwater and associated sediment, groundwater, soil, and fugitive dust. These secondary sources may be transported via secondary transport mechanisms including:

- Contaminants may be mobilized from soil through infiltration and leaching to groundwater or overland transportation to stormwater, surface water or sediment.
- Fugitive dust and paint chips may be mobilized by wind to surface water and sediment.
- Petroleum may enter the vapor phase beneath the shop building and cause elevated concentrations of petroleum vapor in indoor air.

Figure 4 presents the CSM outlining the primary sources, transport mechanisms, exposure mediums, and exposure pathways.

3 EXPOSURE MEDIUMS, EXPOSURE PATHWAYS, AND POTENTIAL RECEPTORS

The potential exposure mediums at the subject property include contained stormwater, vapor, groundwater, contained sediment, and soil. These mediums may become contaminated via transport from the primary and secondary sources. Potential receptors may be exposed via direct contact, inhalation, or ingestion. These exposure mediums and pathways should be further evaluated as future development, land use, and construction advances.

Current and future human receptors may be exposed to hazardous substances by direct contact or ingestion of soil, groundwater, contained stormwater and associated sediment, or by inhalation of vapor or dust. These pathways are considered complete but minor as they are primarily incidental to construction and normal boatyard work where measures are taken to reduce exposure, such as the use of personal protective equipment while accomplishing work. Workers may be exposed via direct contact during future site

renovations requiring the excavation and handling of contaminated soil, contained stormwater and associated sediment, and/or groundwater. Workers should be made aware of the contaminated material and trained properly in handling the material, as well as wear the appropriate personal protective equipment to mitigate exposure hazards. Groundwater and surface water at the subject property is not a potential source of drinking water.

Vapor intrusion may be a direct pathway in the shop building from the petroleum contamination in the former AST area directly outside of the shop building. Petroleum may be contaminating the local atmosphere inside of the shop building due to vapor intrusion, though an analysis has not been completed.

Ecological receptors in the uplands may be exposed to hazardous substances via direct contact or ingestion of the surface water, soil, or sediment. The primary ecological receptor would be water fowl landing in the stormwater pond, benthic organisms in the sediment of the stormwater pond, and burrowing mammals in the undeveloped portions of the Site. These ecological receptors have complete pathways but are expected to be minor exposures given the poor quality of habitat in the develop portions of the Site.

The sediment exposure pathways for the overwater portion of the Site are covered in detail in the 2019 Leon report (Leon, 2019).

4 DATA GAPS ANALYSIS

4.1 Whatcom Environmental Services Initial Investigation

The 2018 initial investigation report was conducted to explore the recognized environmental conditions discovered during the Phase I ESA. The report details using a hand auger to take near-surface samples and a small excavator to dig test pits in the footprint of the former UST. Groundwater was not encountered nor sampled during the investigation, and the report found near-surface contamination of metals, petroleum, and cPAHs (Whatcom Environmental Services, 2017).

4.2 Remedial Investigation (RI)

The most recent report on the subject property is a 2018 Draft RI Report by Whatcom Environmental Services, which includes applicable historical data from previous reports as well as new data found during the investigation. This report is the most recent environmental evaluation of the upland portion of the subject property and is used as the basis of this data gaps analysis and CSM.

4.3 Soil Data Summary

Seventy-one (71) soil samples have been obtained from the surface and shallow subsurface of site by Whatcom Environmental Services. Contaminants are largely present in the surface soils, with contamination extending to a few feet bgs in some locations. The primary contaminants of concern include metals (arsenic, cadmium, copper, lead, mercury, and zinc); petroleum hydrocarbons; cPAHS; chlorinated dibenzo-p-dioxins; and chlorinated dibenzofurans (dioxins/furans). Areas of contamination detailed by contaminant of concern can be found in Figures 2 through 10 of the 2018 Draft RI Report (Whatcom Environmental Services, 2018b), presented in Appendix A.

4.4 Groundwater Data Summary

Groundwater was sampled from six groundwater monitoring wells in 2018. Depths to water range from 28.6 feet near the southern edge of the site, with the other monitoring wells between 11 and 4.5 feet bgs. The only Model Toxics Control Act (MTCA) Method A exceedance was found in MW-1, with dissolved arsenic above the criteria. The wells were placed primarily in the southern half of the site, with no wells near the BLWA. The approximate placement of the wells can be seen in Figure 3, and the Whatcom Environmental Services groundwater data is presented in Appendix A.

4.5 Data Gaps

The previous sampling reports were reviewed and data gaps were discovered in the soil and groundwater sampling. Data gaps were also noted in site history and recordkeeping.

4.5.1 Soil Data Gaps

Areas which contain data gaps and are candidates for additional exploration are outlined in Figure 5 and grouped by potential source area below.

- SRWA: Samples SRWA-1, SRWA-2, and SRWA-3 were taken from the area northwest of the boat building structure and included MTCA Method A exceedances of arsenic, TPH-D, lead, mercury, and cPAHs. Additional exploration was conducted near SRWA-2 with sample locations SRWA-4 and SRWA-5, which did not find contamination above MTCA A at a depth of 3.5 feet bgs. SRWA-6 contains mercury above MTCA Method A with no limits defined. SRWA-7 contains a cPAH exceedance at 3 feet bgs with no limits defined. The vertical extent of contamination in SRWA-1, SRWA-3, SRWA-7, and lateral extent of mercury near SRWA-6 is a data gap.
- Old boat building structure: During the Phase I ESA, the old boat building structure was determined to be unsafe for entry. The ground conditions beneath the structure and the contents of the old boat building structure remains a data gap. Additionally, lead-based

- paints and polychlorinated biphenyl-containing caulking may be present on the exterior of the building, which could lead to leaching and contamination on the site.
- Former AST: The vertical extents of TPH-D and TPH-O contamination is not limited by sample AST-1, 2 feet. The sample contains TPH-D and TPH-O above MTCA Method A at a depth of 2 feet bgs, and no deeper sample has been obtained. The lateral bounds to the east, west, and south have also not been distinguished. The extent of this petroleum contamination near the former AST is a data gap.
 - Former OPALCO Storage Area: Sample OPALCO PAD 1, taken at 4 inches bgs, has MTCA Method A exceedances of lead and cadmium. The vertical extent of this metal contamination has not been limited in this location. Nearby sampling location MW-4 has a sample taken from 11 feet, which has low concentrations of lead and non-detect concentrations of cadmium. Nearby sampling location OPALCO-3 has a lead exceedance in the surface soil and a low concentration of lead at 4 feet bgs. The lead and cadmium MTCA A exceedances at OPALCO PAD 1 may be limited to the first few feet of soil, as indicated by nearby explorations, but remains as a data gap.
 - BLWA: Samples taken from BLWA-1 and BLWA-2 do not have vertical bounds on copper and lead MTCA A exceedances. BLWA-6, a location between BLWA-1 and BLWA-2, has lead contamination above MTCA Method A between 5 and 10 feet bgs. Lead at this depth suggests fill in this area. BLWA-6 also has elevated concentrations of TPH-D and TPH-O at 5 feet bgs. BLWA-4, closer to the shoreline, has a lead exceedance at 5 feet bgs which is not vertically limited. The vertical and lateral extent of contamination of lead and copper in the BLWA and the potential use of contaminated fill is a data gap.
 - Site Wide: Chlorinated dioxins/furans exceeded MTCA Method A criteria in each sample taken (MW-4, 2 to 6 inches and MW-3, 2 to 6 inches). Only two samples were analyzed for these contaminants, and the extent of this contamination is unknown. The chlorinated dioxins/furans were likely generated from the same sources which created cPAH contamination. The cPAH testing should be used as an indicator contaminant for potential chlorinated dioxins/furans. The extent of the chlorinated dioxins/furans is data gap, though it likely reflects the cPAH contamination.
 - Sitewide: PCBs have not been thoroughly analyzed throughout the Site. PCBs have been evaluated near the OPALCO Storage Area, near MW-4, and in boring SWRA-3. The lack of comprehensive PCB analysis is a data gap.
 - Sitewide: Soil beneath the structures present on the site have not been evaluated due to access issues. Uninvestigated soil beneath the structures is a data gap.
 - Soil Gas: Soil gas sampling has not been completed at the site, nor has a vapor intrusion study been completed. The lack of soil gas sampling and a vapor intrusion study is a data gap.
 - Wooded area to the south: Soil and groundwater conditions have not been evaluated in the south end of the property. It is possible this area was used for indiscriminate

dumping. A walk-through observation of the area should be completed and follow-up sampling if evidence of indiscriminate dumping is noted.

- Former dump area: The former dump area was explored with composite sampling and test pits. Sample FDA-3 was collected as a composite sample from the base of the bluff to a depth of 2.5 feet bgs. This sample contained elevated concentrations of TPH-O and lead. The concentrations are below MTCA Method A, but is indicative that the dump area does contain contamination that has not been fully characterized. The extent and use of the former dump area, the former use of the abandoned cabin, and the extent of contamination in soil and groundwater is a data gap.
- History: The general site and utility history is a data gap. It is unknown when the stormwater pond was installed and what stormwater treatment or utilities, if any, were in use before the current system. Aerial photographs from 2011 show the site without the stormwater pond visible, so it can be assumed the pond was installed after 2011. The location of one outfall is known to be in the middle of the Site, but it is possible other outfalls may have existed.

4.5.2 Groundwater Data Gaps

Areas which contain data gaps and are candidates for additional exploration are outlined in Figure 5 and described below.

- Shoreline: Monitoring wells were not installed in areas downgradient of known contamination in the BLWA, the SRWA, or the OPALCO area. The groundwater conditions closer to the shoreline where there is risk for groundwater to infiltrate into the surface water is a data gap.
- Former AST: One groundwater sample was collected from MW-1, which is approximately 60 feet downgradient of the former AST and contained detectable concentrations of TPH-D and dissolved arsenic above MTCA Method A. Groundwater was not sampled in the direct vicinity of the former AST, where there is known elevated petroleum concentrations in soil. Groundwater conditions near the former AST is a data gap.
- The history and integrity of the stormwater system is unknown. If the system is cracked, leaking, or otherwise damaged, it may be releasing collected contaminated stormwater into the groundwater. It is unknown whether the system has ever been evaluated with a downhole camera to investigate for leaks or cracks, and current or historical utility maps are not available. The stormwater system history and integrity is a data gap.

4.5.3 Additional Exploration Recommendations

To fill in the data gaps, additional exploration and delineation is recommended. Additional recommended explorations are shown in Figure 5.

Shannon & Wilson, Inc. has prepared the enclosed "Important Information About Your Environmental Site Assessment/Evaluation Report" to assist you and others in understanding the use and limitations of our reports.

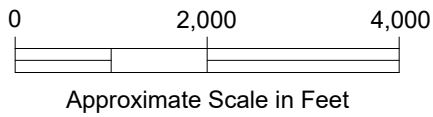
5 REFERENCES

Leon Environmental LLC (Leon), 2019, Draft intertidal and subtidal conceptual site model and data gaps report, Jensen and Sons Boatyard and Marina: Report prepared by Leon Environmental LLC, Seattle, Wash., March.

Whatcom Environmental Services, 2017, Phase I environmental site assessment, Jensen Shipyard, 1923 Turn Point Road, Friday Harbor, Washington: Report prepared by Whatcom Environmental Services, Bellingham, Wash., November.

Whatcom Environmental Services, 2018a, Initial investigation report, Jensen Shipyard, 1923 Turn Point Road, Friday Harbor, Washington: Report prepared by Whatcom Environmental Services, Bellingham, Wash., April.

Whatcom Environmental Services, 2018b, Draft remedial investigation report, Jensen Shipyard, 1923 Turn Point Road, Friday Harbor, Washington: Report prepared by Whatcom Environmental Services, Bellingham, Wash., October.



Jensen Shipyard
1293 Turn Point Road
Friday Harbor, Washington

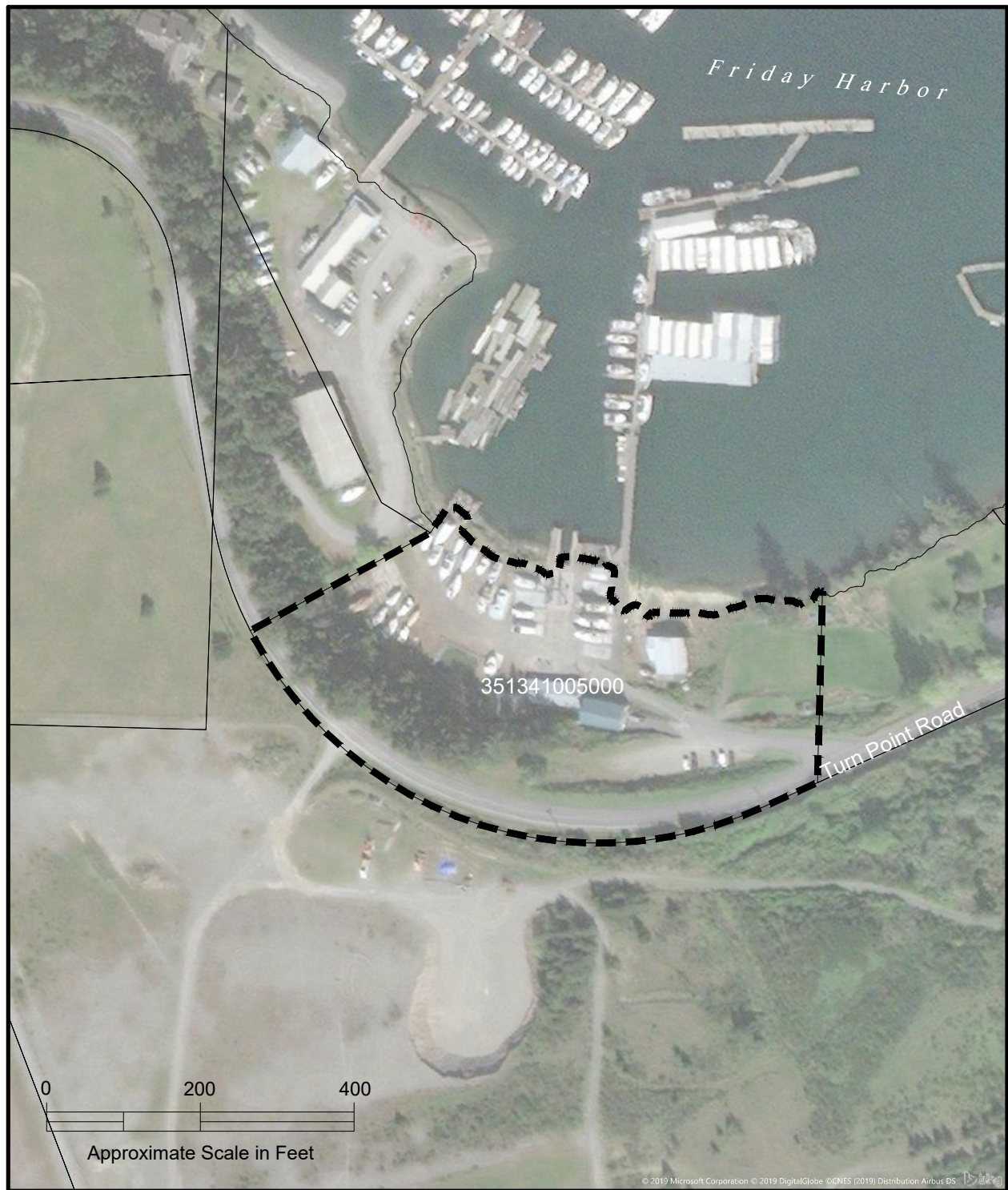
VICINITY MAP

September 2019


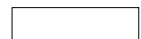
101579-001



FIG. 1



LEGEND

-  Subject Parcel
-  Other Parcels

Jensen Shipyard
1293 Turn Point Road
Friday Harbor, Washington

SITE MAP

September 2019 101579-001

SHANNON & WILSON, INC.
ENGINEERING AND ENVIRONMENTAL CONSULTANTS

FIG. 2

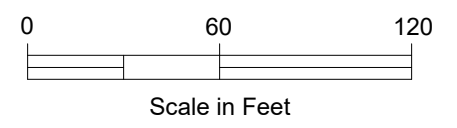


NOTE

- 1. General boat maintenance is site wide primary source.

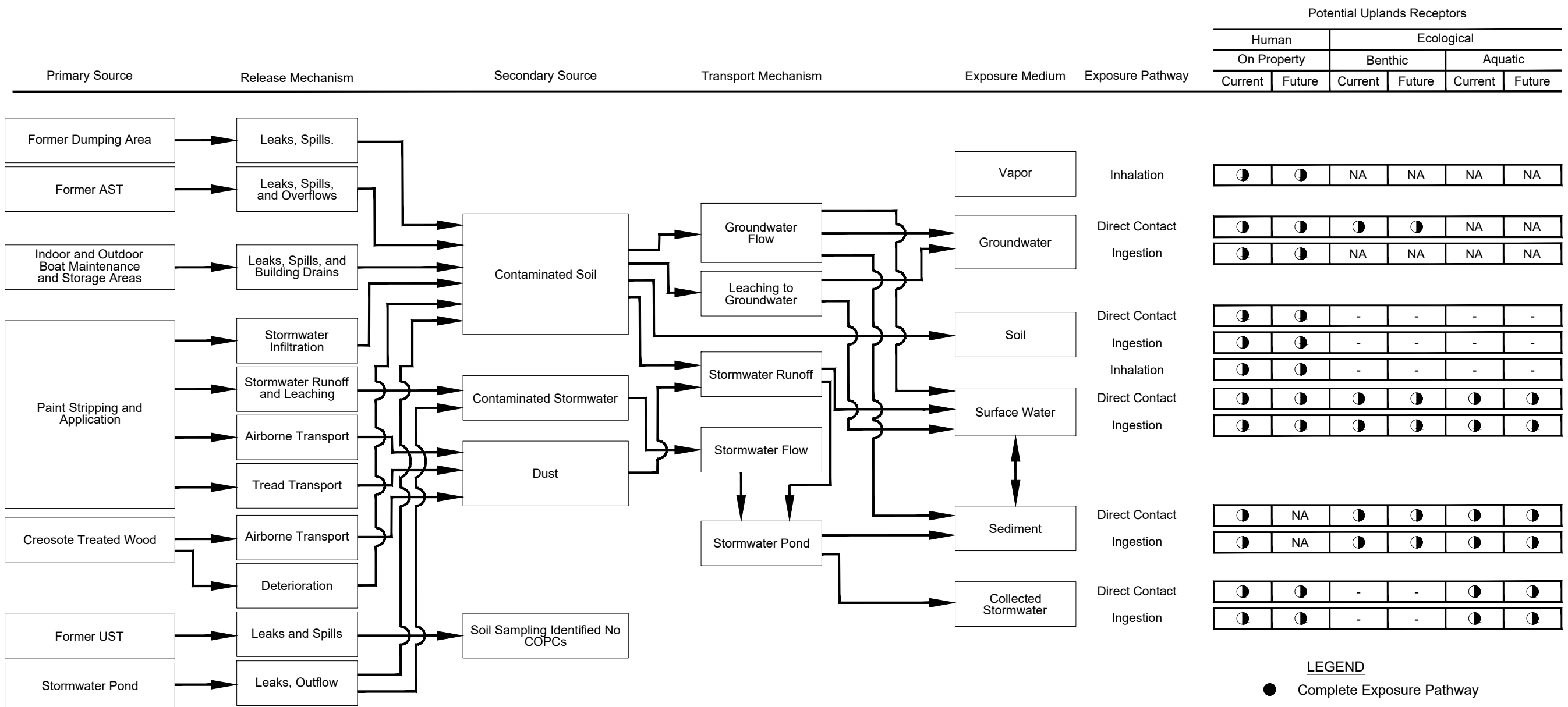
LEGEND

- MW-1 Monitoring Well Designation and Approximate Location
- BLWA-1 Soil Sample Designation and Approximate Location
- Approximate Subject Site Property Boundary



Jensen Shipyard 1293 Turn Point Road Friday Harbor, Washington	
UPLANDS PRIMARY SOURCE AREAS	
September 2019	101579-001
SHANNON & WILSON, INC. GEOTECHNICAL AND ENVIRONMENTAL CONSULTANTS	
FIG. 3	

Filename: \\sea-fs1\Drafting_SEA\101579\001\101579-001 Conceptual Site Model.dwg Layout: Figure 4 Date: 09-26-2019 Login: JRS

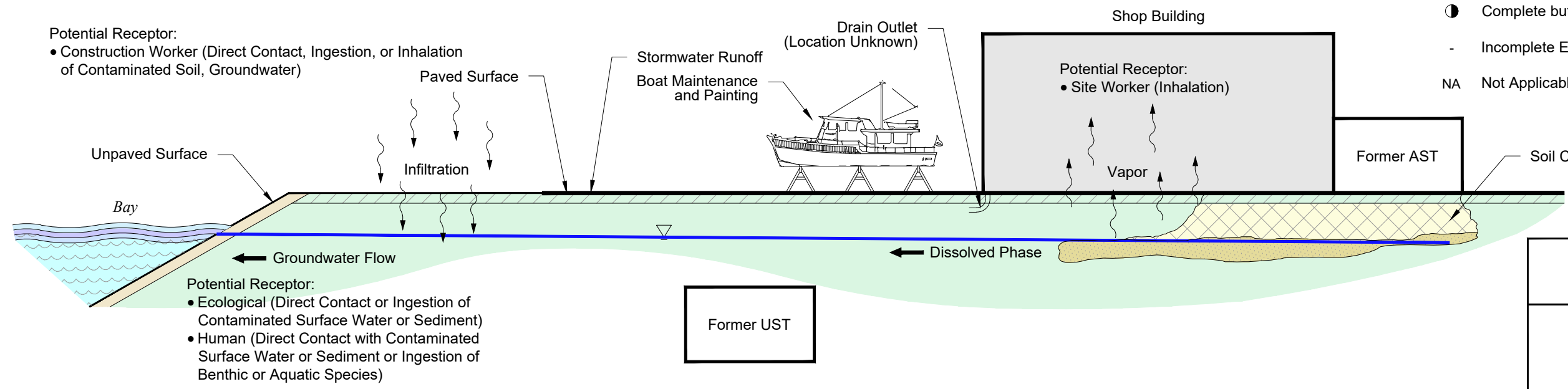


Potential Uplands Receptors					
Human		Ecological			
On Property		Benthic		Aquatic	
Current	Future	Current	Future	Current	Future

Inhalation	●	●	NA	NA	NA	NA
Direct Contact	●	●	●	●	NA	NA
Ingestion	●	●	NA	NA	NA	NA
Direct Contact	●	●	-	-	-	-
Ingestion	●	●	-	-	-	-
Inhalation	●	●	-	-	-	-
Direct Contact	●	●	●	●	●	●
Ingestion	●	●	●	●	●	●
Direct Contact	●	NA	●	●	●	●
Ingestion	●	NA	●	●	●	●
Direct Contact	●	●	-	-	●	●
Ingestion	●	●	-	-	●	●

LEGEND

- Complete Exposure Pathway
- ◐ Complete but Minor Exposure Pathway
- Incomplete Exposure Pathway
- NA Not Applicable



Potential Receptor:

- Construction Worker (Direct Contact, Ingestion, or Inhalation of Contaminated Soil, Groundwater)

Potential Receptor:

- Ecological (Direct Contact or Ingestion of Contaminated Surface Water or Sediment)
- Human (Direct Contact with Contaminated Surface Water or Sediment or Ingestion of Benthic or Aquatic Species)

Jensen Shipyard
1293 Turn Point Road
Friday Harbor, Washington

**PRELIMINARY UPLANDS
CONCEPTUAL SITE MODEL**

September 2019 101579-001

SHANNON & WILSON, INC.
GEOTECHNICAL AND ENVIRONMENTAL CONSULTANTS

FIG. 4

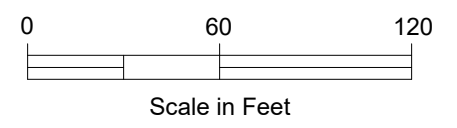


LEGEND

MW-1 Monitoring Well Designation and Approximate Location

BLWA-1 Soil Sample Designation and Approximate Location

Approximate Subject Site Property Boundary



Jensen Shipyard
1293 Turn Point Road
Friday Harbor, Washington

DATA GAPS

September 2019 101579-001

SHANNON & WILSON, INC.
GEOTECHNICAL AND ENVIRONMENTAL CONSULTANTS

FIG. 5

Appendix A

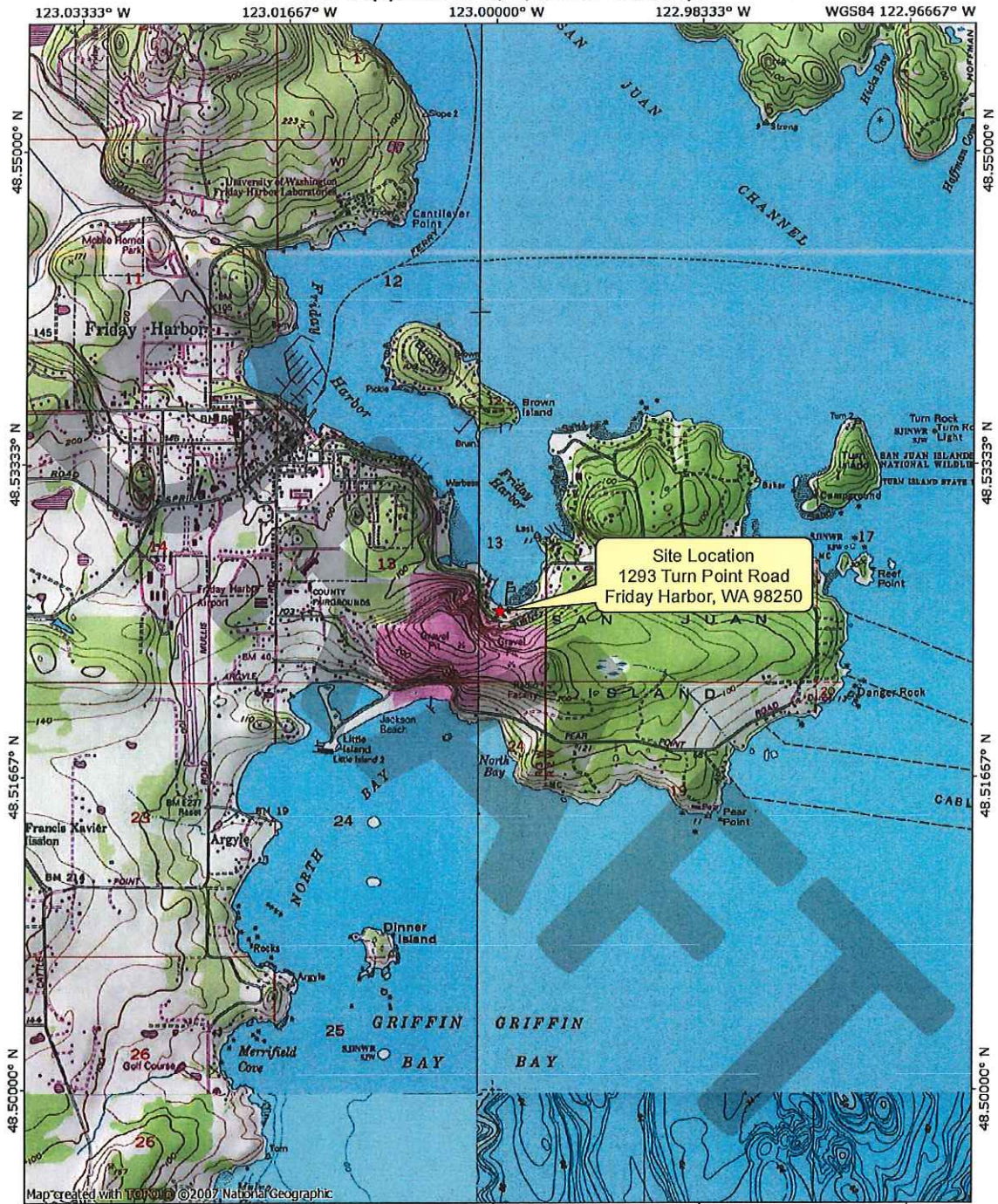
Analytical Data Tables and Figures From Previous Draft* and Final Whatcom Environmental Services Reports

CONTENTS

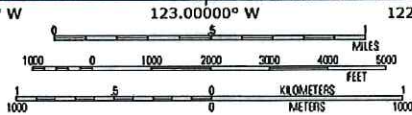
- Upland Soil Contamination Area Figures
- Analytical Data Tables

* Draft Figures and Tables are provided when a Final version is not available.

TOPO! map printed on 10/04/17 from "Untitled.tpo"



Map created with TOPO! © 2007 National Geographic



TN 16°
10/04/17

Prepared for:



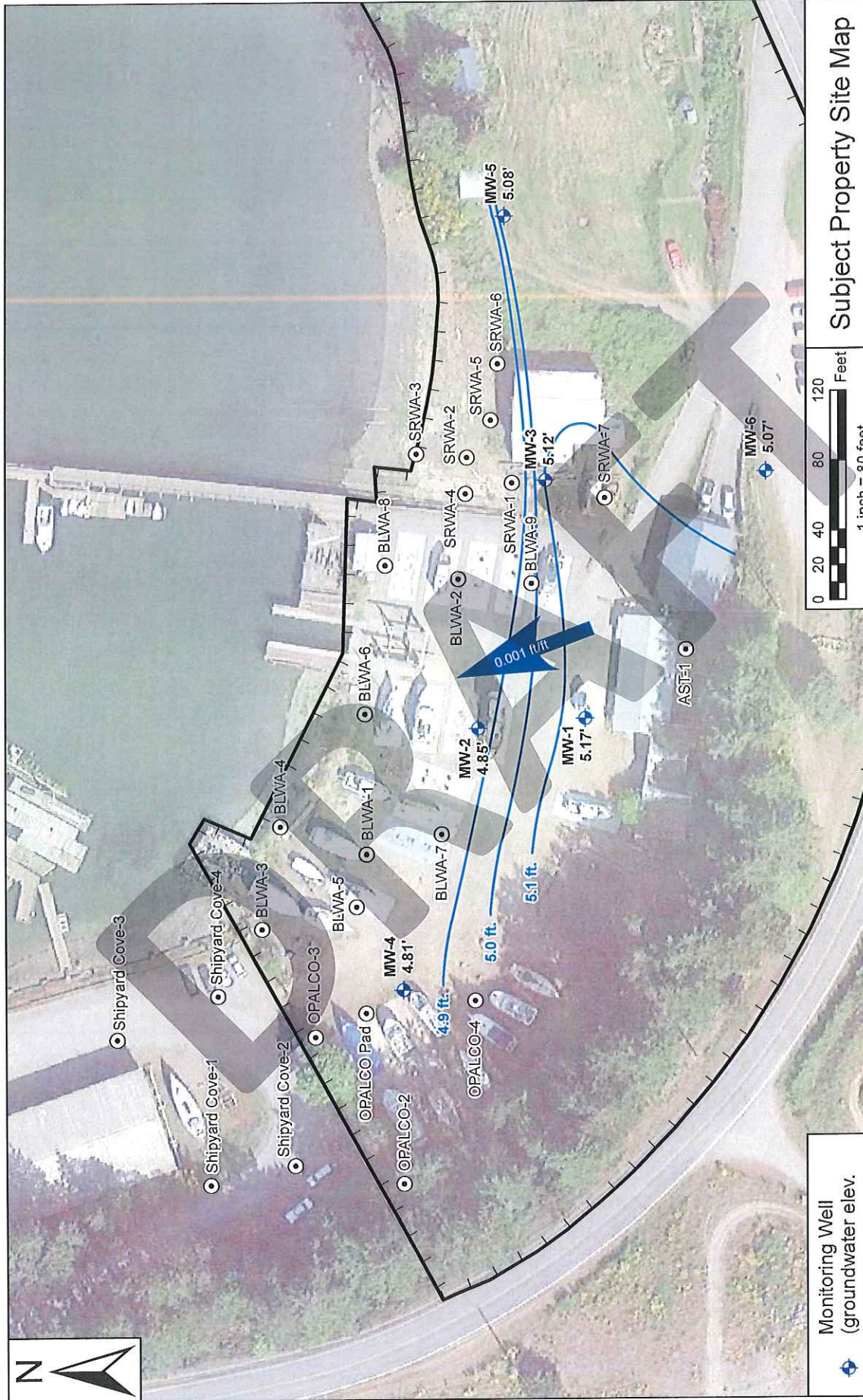
Prepared by:

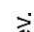

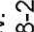



Site Location Map

Jensen's Shipyard
Further Investigation
2/20/18

Figure 1



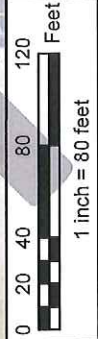
-  Monitoring Well (groundwater elev. shown)
-  Soil Sample
-  Groundwater Elev. Contour (2018-08-29)
-  Subject Property

All data are approximate and should be used for relative location reference only.
 2015 aerial obtained from Google Earth.

Prepared for:



Prepared by:

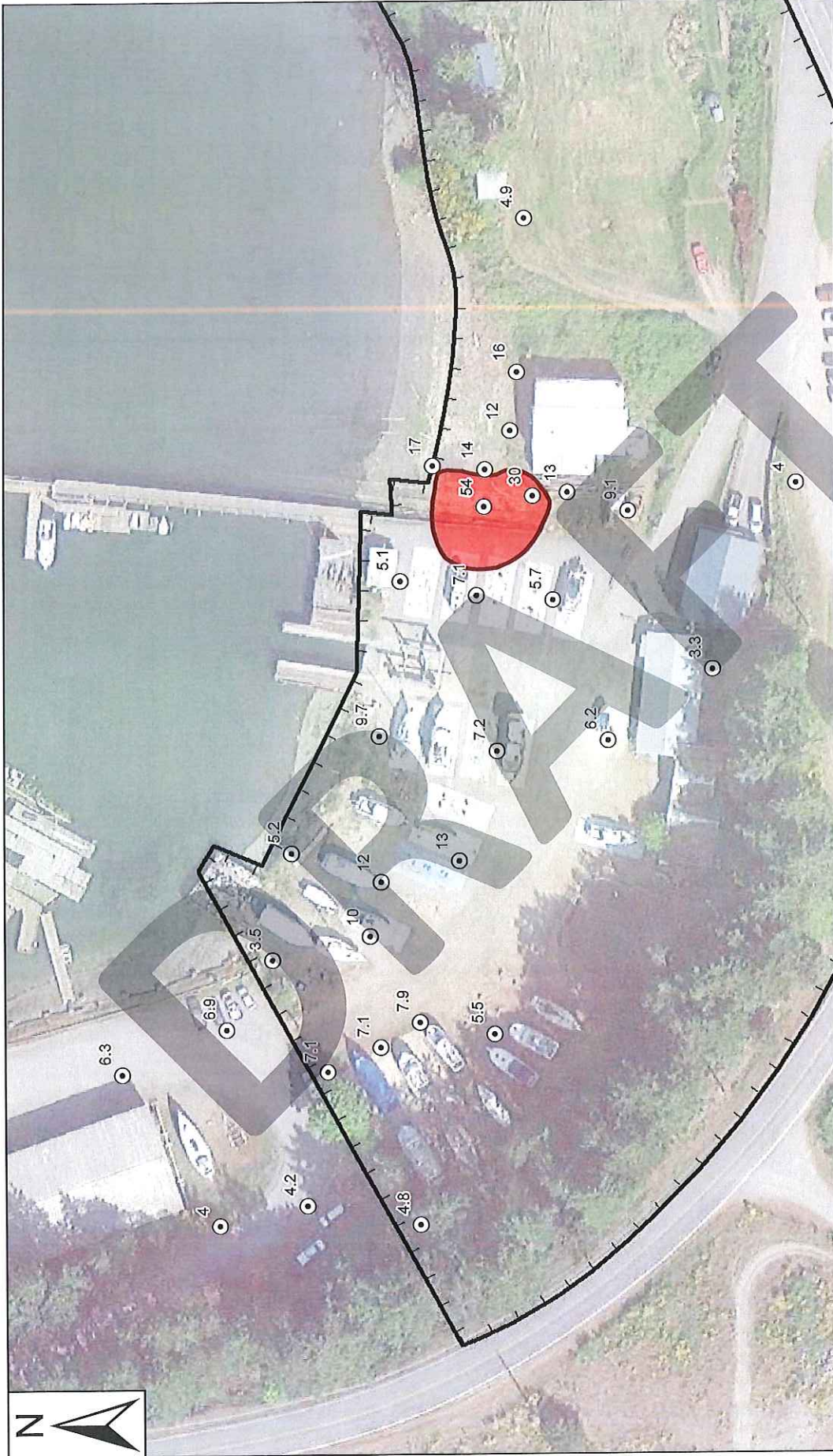






Subject Property Site Map

1293 Turn Point Road
 Friday Harbor, WA 98250

Jensen's Shipyard
 10/12/18

Figure 2



-  Soil Sample (data shown in mg/kg)
-  MTCA Method A CUL (20 mg/kg)
-  Ecology Indicator - Wildlife (132 mg/kg)
-  Subject Property

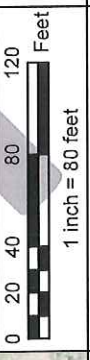
All data are approximate and should be used for relative location reference only.

2015 aerial obtained from Google Earth.

Contaminant data shown are from surface samples, generally 2 to 6 inches bgs.



Prepared by:

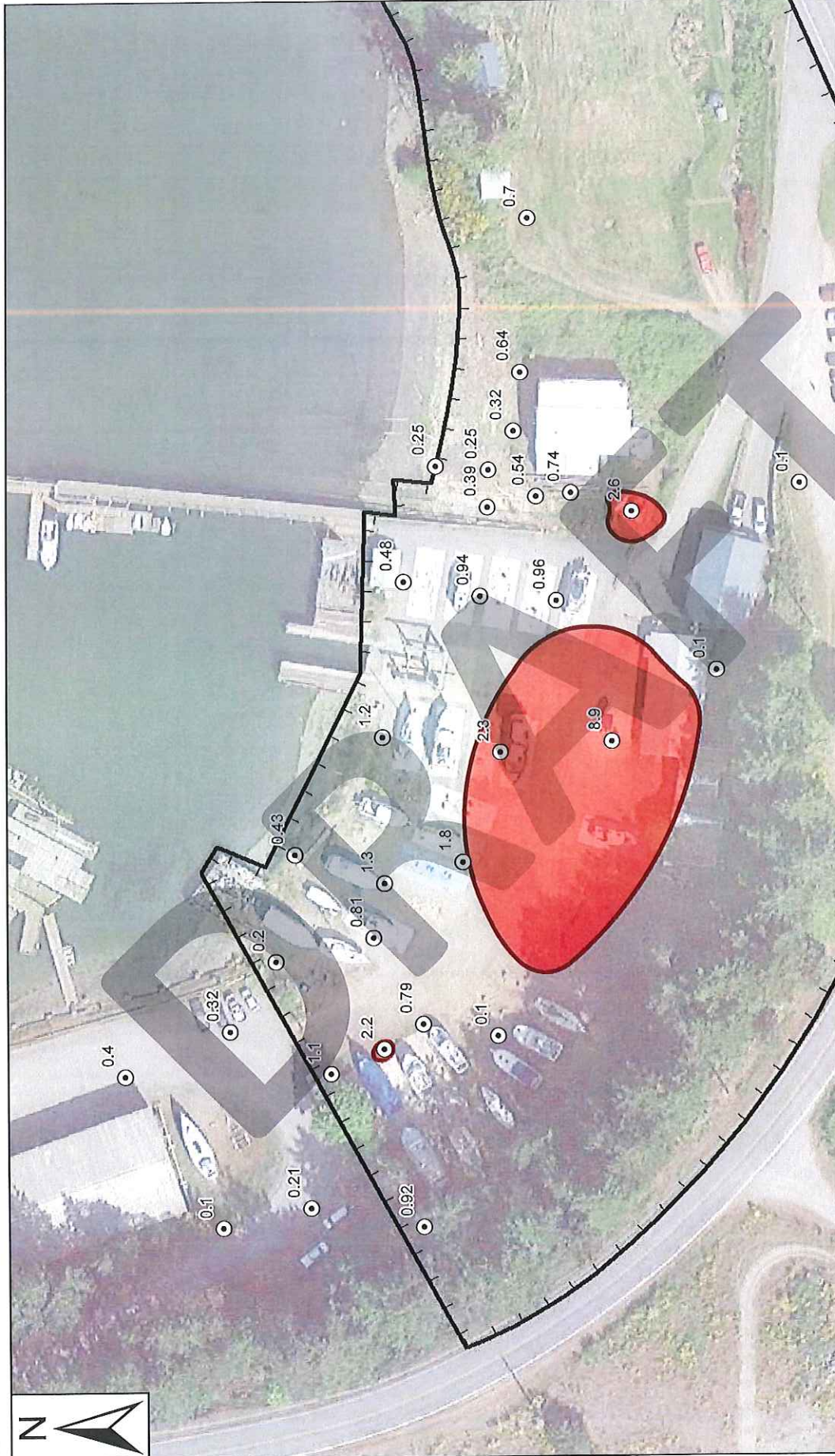


Surficial Soil Arsenic Concentration Map

1293 Turn Point Road
Friday Harbor, WA 98250

Jensen's Shipyard
10/12/18

Figure 3



Surficial Soil Cadmium Concentration Map

1293 Turn Point Road
Friday Harbor, WA 98250

Jensen's Shipyard
10/12/18

Figure 4

Prepared by:

awhatcom
ENVIRONMENTAL

Prepared for:

PORT OF FRIDAY HARBOR

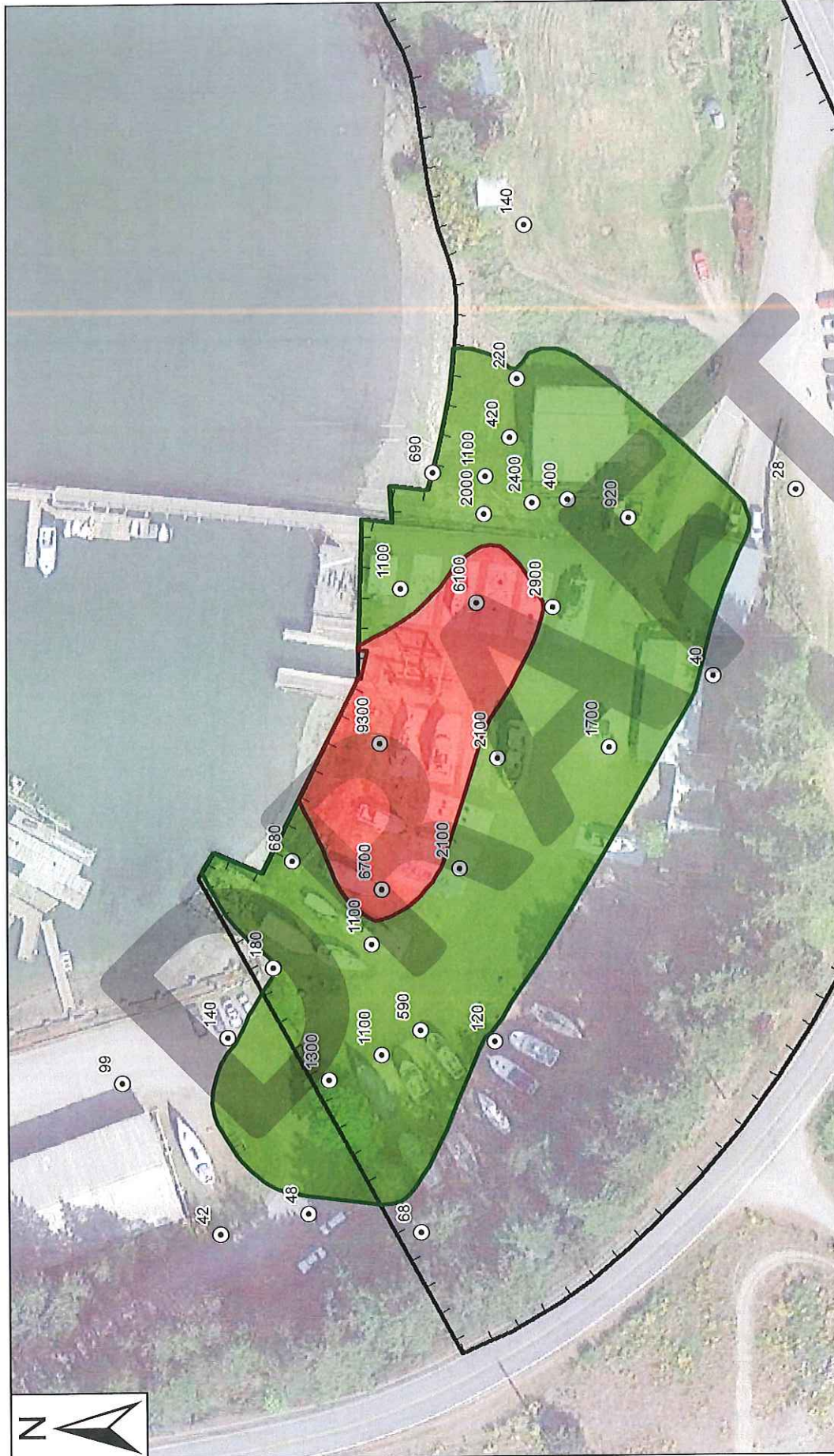
All data are approximate and should be used for relative location reference only.

2015 aerial obtained from Google Earth.

Contaminant data shown are from surface samples, generally 2 to 6 inches bgs.

Soil Sample (data shown in mg/kg)


- MTCA Method A CUL (2.0 mg/kg)
- Ecology Indicator - Wildlife (14.0 mg/kg)
- Subject Property



Soil Sample (data shown in mg/kg)
 MTCA Method A CUL (3200 mg/kg)
 Ecology Indicator - Wildlife (217 mg/kg)
 Subject Property

All data are approximate and should be used for relative location reference only.
 2015 aerial obtained from Google Earth.
 Contaminant data shown are from surface samples, generally 2 to 6 inches bgs.

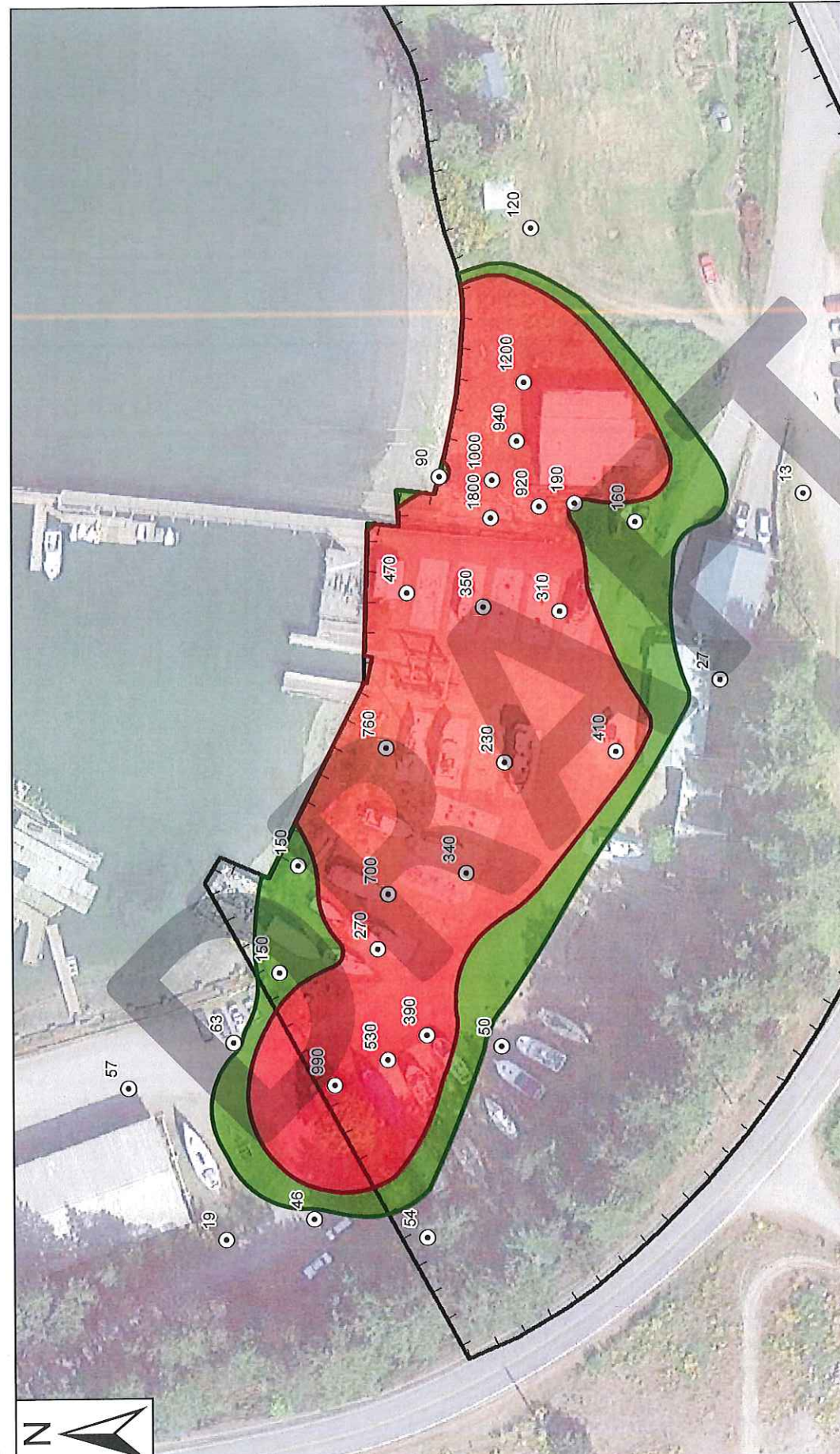
Prepared for:


Prepared by:


Surficial Soil Copper Concentration Map
 1293 Turn Point Road
 Friday Harbor, WA 98250
 Jensen's Shipyard
 10/12/18

0 20 40 80 120 Feet
 1 inch = 80 feet

Figure 5



Surficial Soil Lead Concentration Map

1293 Turn Point Road
Friday Harbor, WA 98250

Jensen's Shipyard
10/12/18

Figure 6

Prepared by:



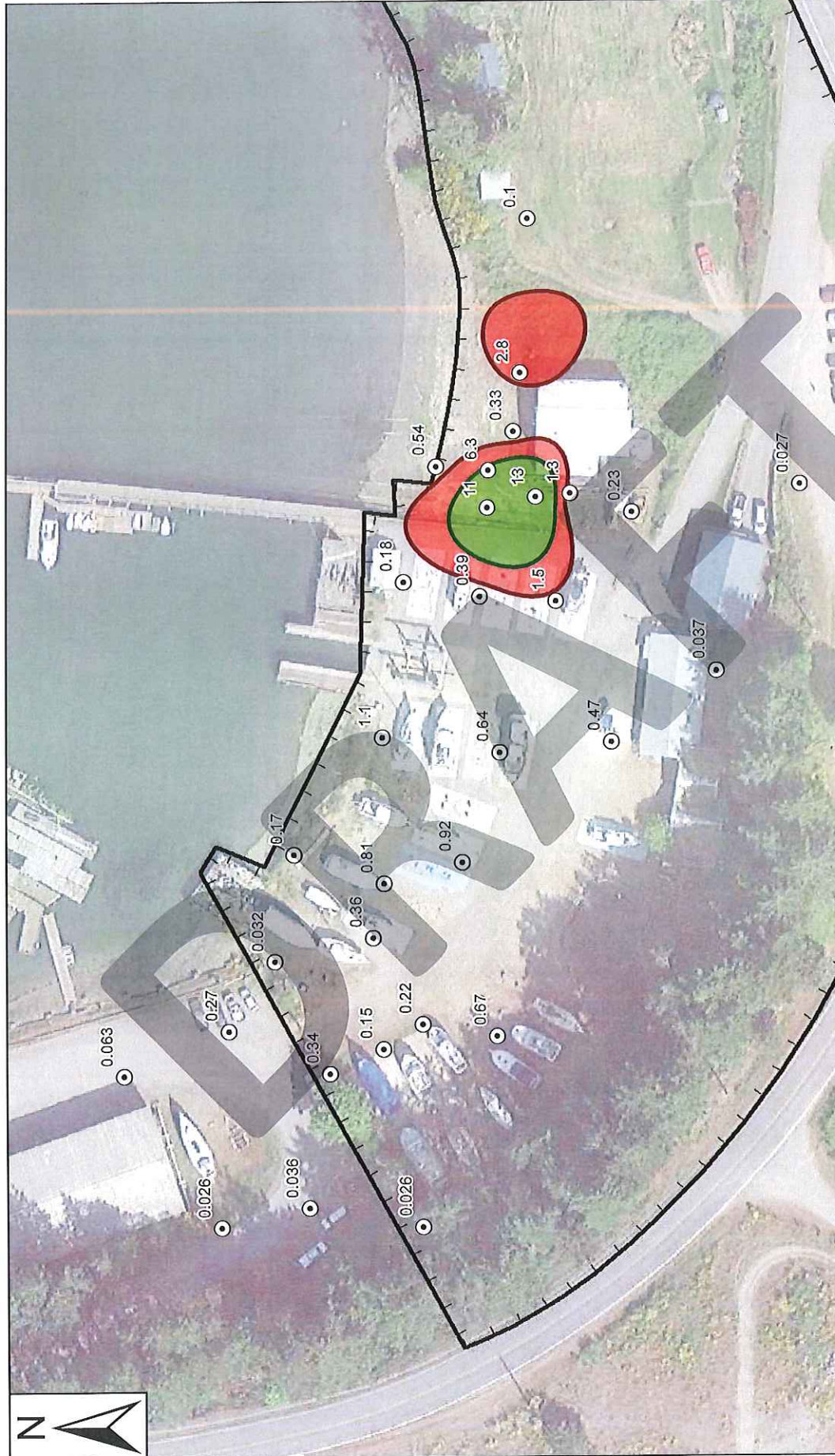
Prepared for:



All data are approximate and should be used for relative location reference only.

2015 aerial obtained from Google Earth.

Contaminant data shown are from surface samples, generally 2 to 6 inches bgs.



Surficial Soil Mercury Concentration Map

1293 Turn Point Road
Friday Harbor, WA 98250

Jensen's Shipyard
10/12/18

Figure 7

Prepared by:

awhatcom
ENVIRONMENTAL

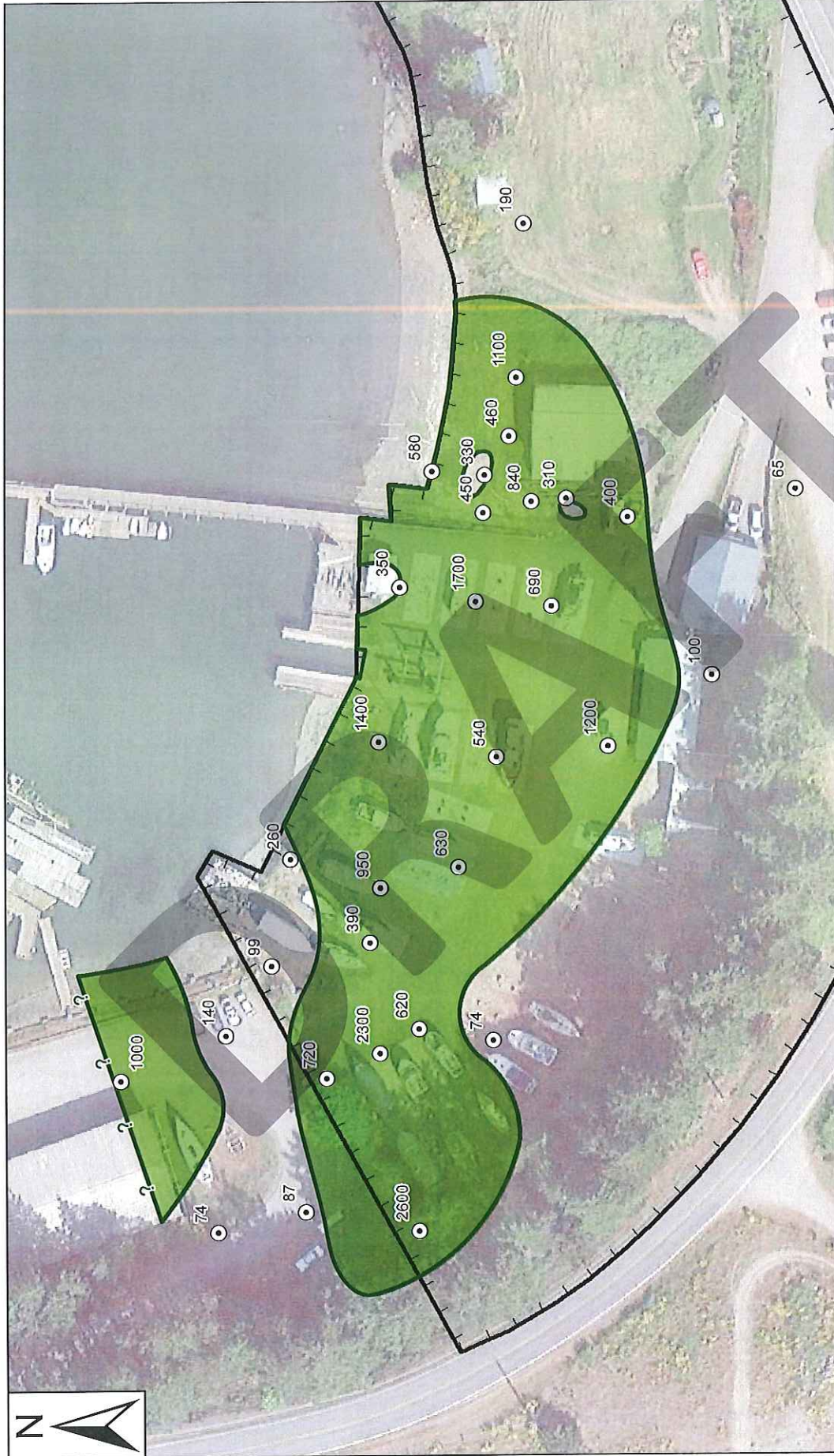
Prepared for:

PORT OF FRIDAY HARBOR

All data are approximate and should be used for relative location reference only.

2015 aerial obtained from Google Earth.

Contaminant data shown are from surface samples, generally 2 to 6 inches bgs.



Surficial Soil Zinc Concentration Map

1293 Turn Point Road
Friday Harbor, WA 98250

Jensen's Shipyard
10/12/18

Figure 8

Prepared by:



Prepared for:

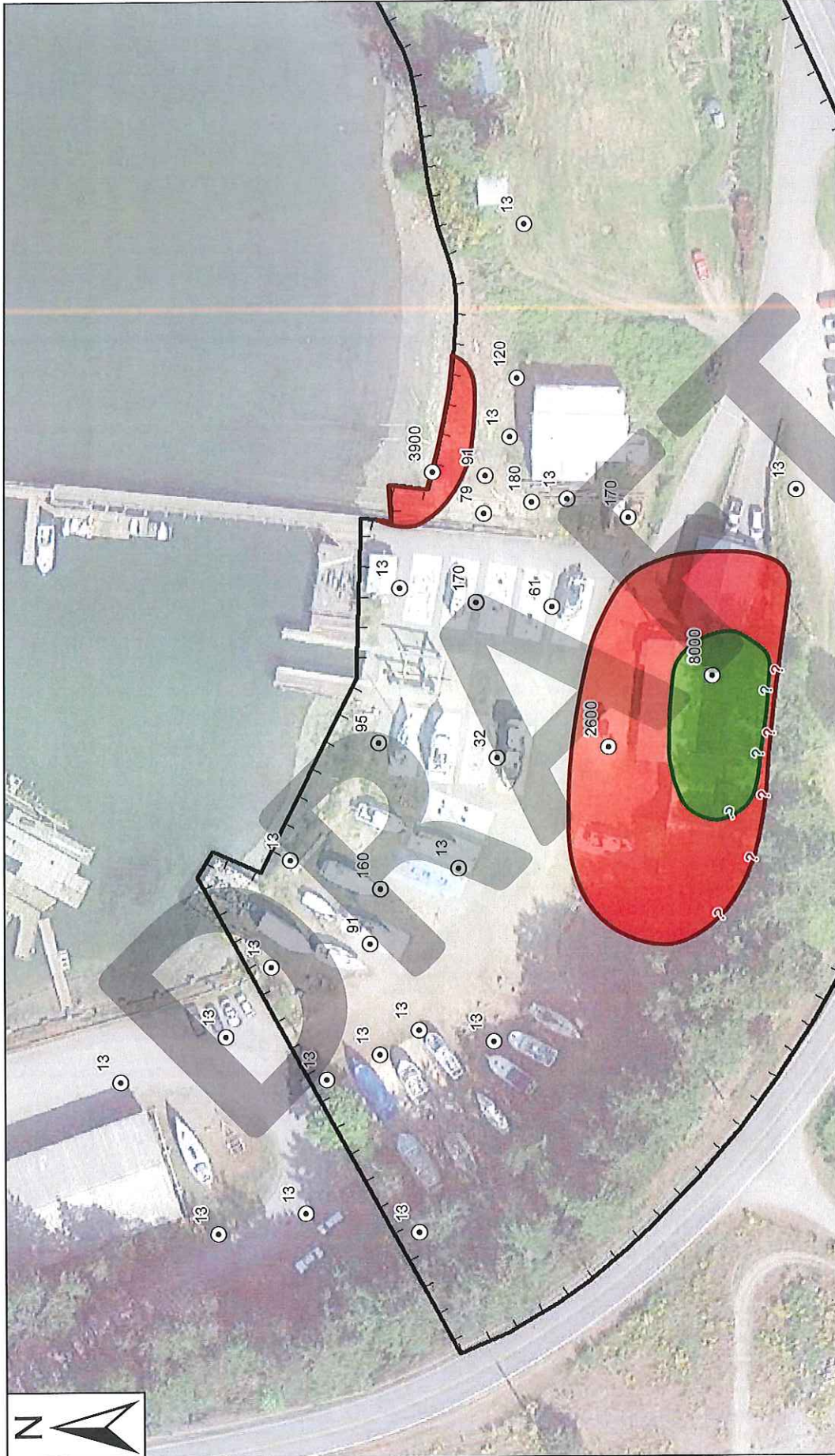




All data are approximate and should be used for relative location reference only.

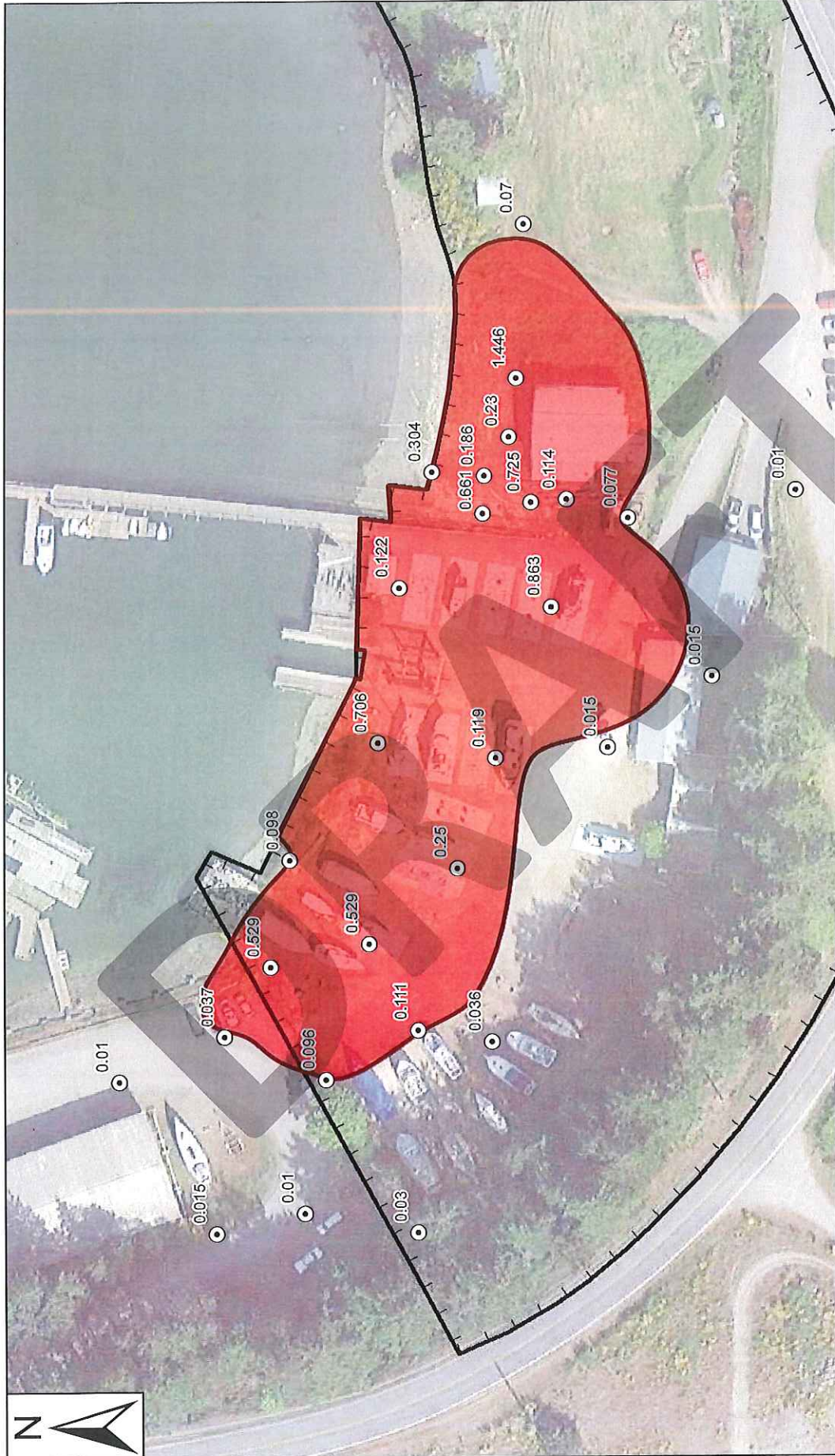
2015 aerial obtained from Google Earth.

Contaminant data shown are from surface samples, generally 2 to 6 inches bgs.

- ⊙ Soil Sample (data shown in mg/kg)
- MTCA Method A CUL (24,000 mg/kg)
- Ecology Indicator - Wildlife (360 mg/kg)
- Subject Property




<p>Soil Sample (data shown in mg/kg)</p> <ul style="list-style-type: none"> ⊙ MTCA Method A CUL (2000 mg/kg) ■ Ecology Indicator - Wildlife (6000 mg/kg) □ Subject Property 	<p>All data are approximate and should be used for relative location reference only.</p> <p>2015 aerial obtained from Google Earth.</p> <p>Contaminant data shown are from surface samples, generally 2 to 6 inches bgs.</p>	<p>Prepared for:</p> 	<p>Prepared by:</p> 	<p>Surficial Soil TPH-Dx Diesel Concentration Map</p>
				<p>1293 Turn Point Road Friday Harbor, WA 98250</p>



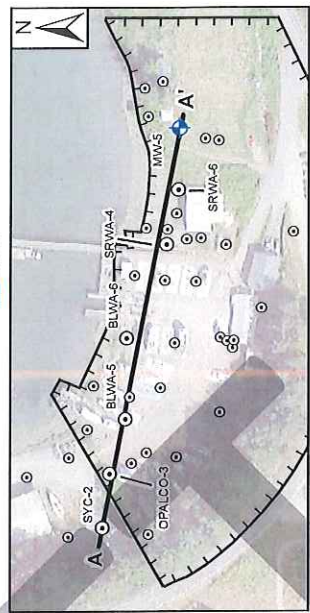
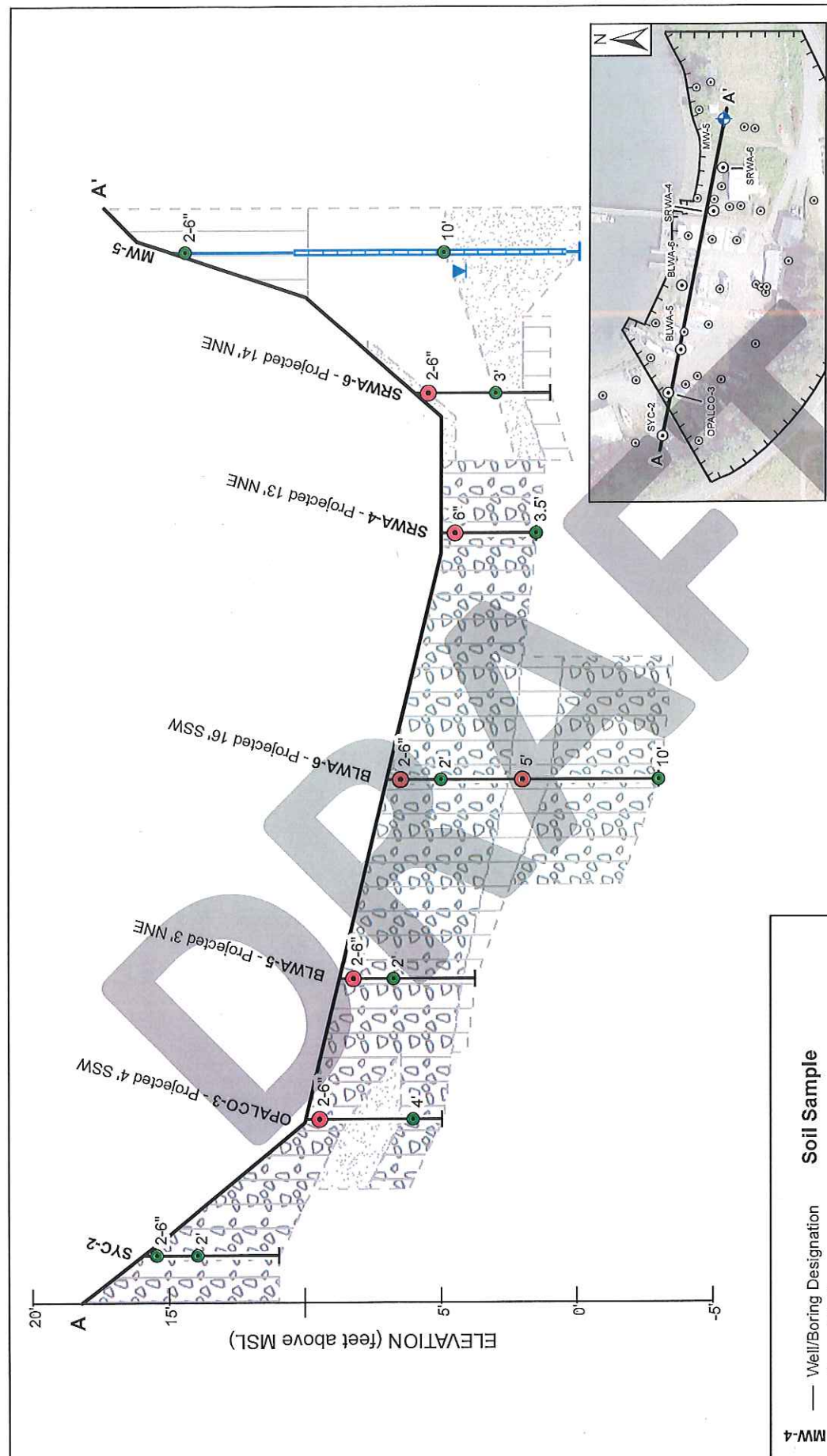
Soil Sample (data shown in mg/kg)
 MTCA Method A CUL (0.1 mg/kg)
 Ecology Indicator - Wildlife (12 mg/kg)
 Subject Property

All data are approximate and should be used for relative location reference only.
 2015 aerial obtained from Google Earth.
 Contaminant data shown are from surface samples, generally 2 to 6 inches bgs.

Prepared for:


Prepared by:


Surficial Soil cPAH TEq Concentration Map
 1293 Turn Point Road
 Friday Harbor, WA 98250
 Jensen's Shipyard
 10/12/18
Figure 10



Well/Boring Designation	Soil Sample
Ground Surface	Exceeded MTCAA
Screened Interval	Met MTCAA
Bottom of Boring	Soil Classification
Groundwater Depth (8/29/18)	Silty Gravel
	Sand
	Silt
	No Recovery/No Data

All data are approximate and should be used for relative location reference only.

SCALE: HORIZ. 1" = 80'
VERT. 1" = 5.3'
(15x Vertical Exaggeration)

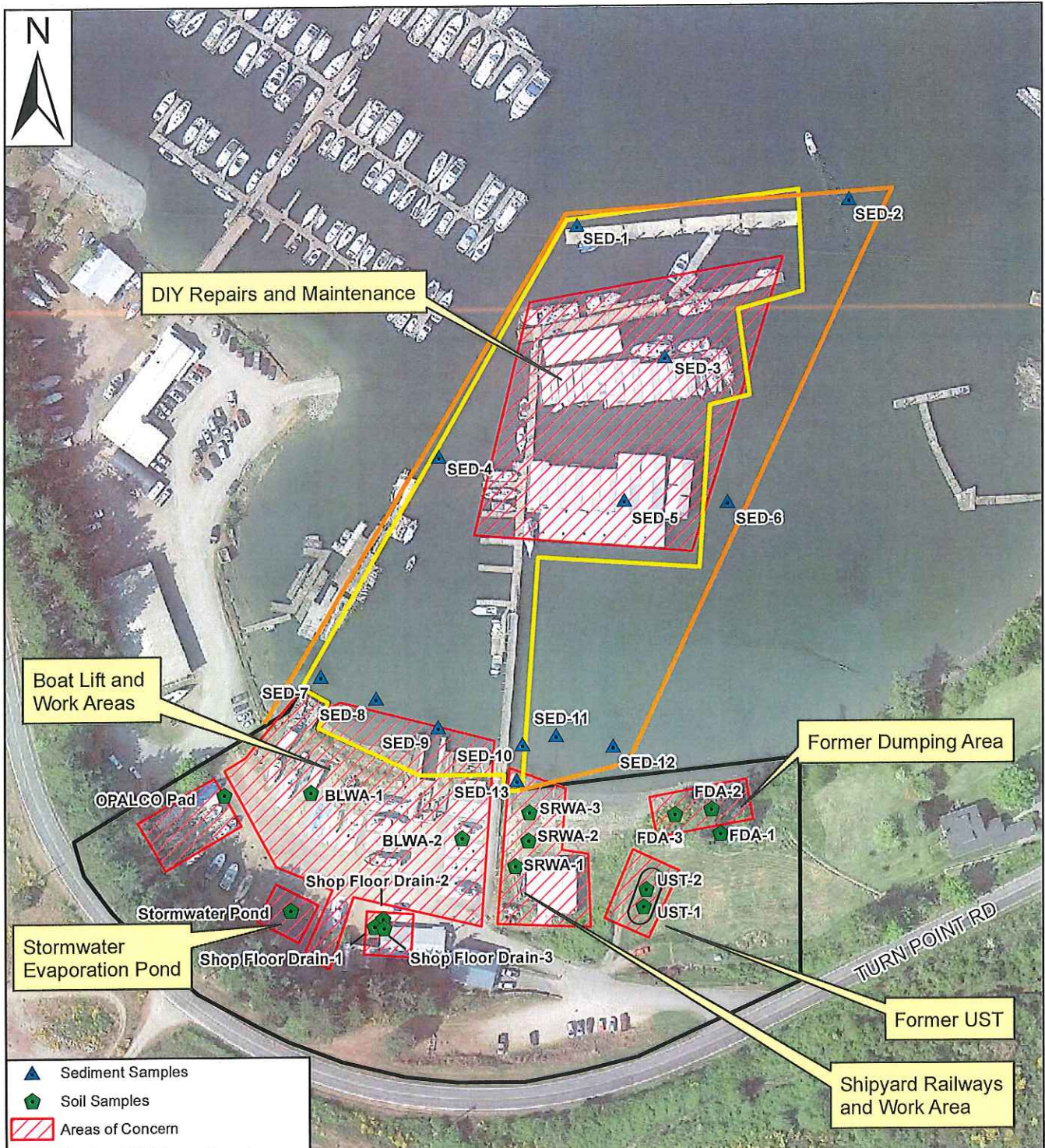
Cross-Section A-A'



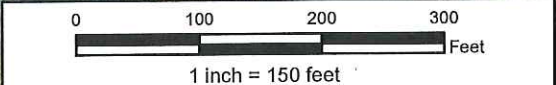
Prepared by:
Jensen's Shipyard
09/25/18

1293 Turn Point Road
Friday Harbor, WA 98250

Figure 11



- ▲ Sediment Samples
- ⬠ Soil Samples
- Areas of Concern
- Previous DNR Lease Boundary
- 2001-Present DNR Lease Boundary
- Property Boundary
- Former UST



All data are approximate and should be used for relative location reference only.
 2017 Google Earth photograph.

Subject Property and Sample Location Map

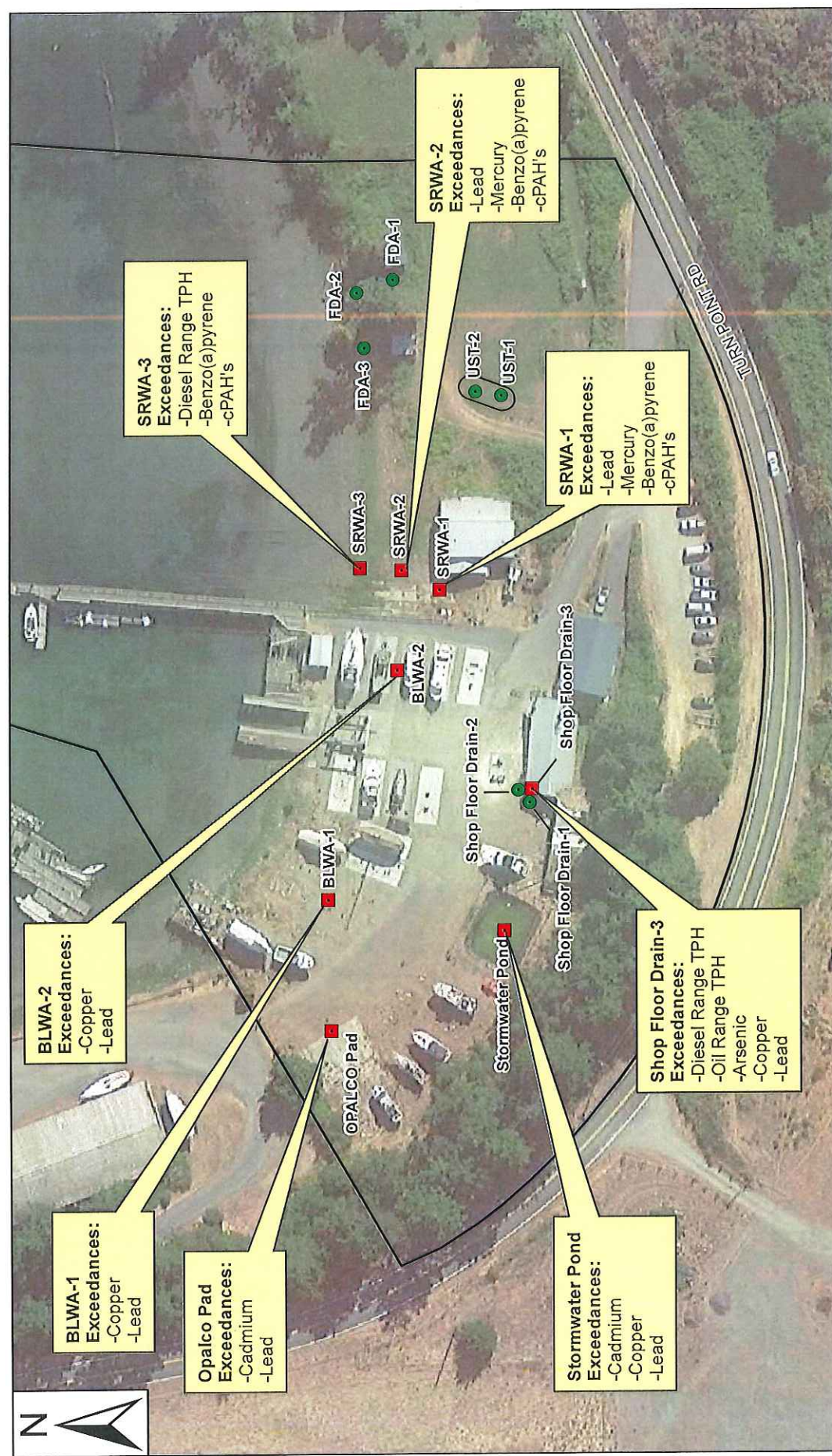
Prepared for:

Prepared by:

1293 Turn Point Road
 Friday Harbor, WA 98250

Jensen's Shipyard
 Initial Assessment
 3/27/18

Figure 2



BLWA-1
Exceedances:
-Copper
-Lead

BLWA-2
Exceedances:
-Copper
-Lead

Opalco Pad
Exceedances:
-Cadmium
-Lead

Opalco Pad

Stormwater Pond
Exceedances:
-Cadmium
-Copper
-Lead

Stormwater Pond
Exceedances:
-Cadmium
-Copper
-Lead

Shop Floor Drain-3
Exceedances:
-Diesel Range TPH
-Oil Range TPH
-Arsenic
-Copper
-Lead

Shop Floor Drain-1
Shop Floor Drain-2
Shop Floor Drain-3

SRWA-3
Exceedances:
-Diesel Range TPH
-Benzo(a)pyrene
-CPAH's

SRWA-1
SRWA-2
SRWA-3

SRWA-2
Exceedances:
-Lead
-Mercury
-Benzo(a)pyrene
-CPAH's

SRWA-1
Exceedances:
-Lead
-Mercury
-Benzo(a)pyrene
-CPAH's

USTF-1
USTF-2

FDA-1
FDA-2
FDA-3

- Soil Sample (no criteria exceedance)
- Soil Sample (exceeds one or more criteria)
- Subject Property
- Former UST

All data are approximate and should be used for relative location reference only.
2017 Google Earth aerial photograph.



Prepared by:
awhatcom
ENVIRONMENTAL

Upland Soil
Sample Results Map
1293 Turn Point Road
Friday Harbor, WA 98250

Jensen's Shipyard
Initial Assessment
3/27/18

Figure 3

Table 1. Upland Soil Sample Descriptions - Jensen's Shipyard

Sample ID	Date	Location and Description	PID (ppm)	Sheen Test^a
Shop Floor Drain-1	1/24/2018	Collected using a hand auger 1 foot west of the northwest corner of the shop at 3.5 feet bgs. Coarse sand with gravel, brown, loose, moist.	0	VSS
Shop Floor Drain-2	1/24/2018	Collected using a hand auger 2 feet east, and 2 feet north of the northwest corner of the shop at 3.5 feet bgs. Coarse sand with gravel, brown, loose, moist.	0	NS
Shop Floor Drain-3	1/24/2018	Collected directly from shop floor drain inside the shop building using a 1 inch stainless steel soil punch at 1.5 feet bgs. Silty sand with organics, dark brown, firm, dry.	3.0	SS
OPALCO Pad	1/24/2018	Collected as a composite sample from 1 to 4 inches bgs, 15 feet west of the northeast corner of the old OPALCO pad. Coarse gravel with sand and organics, brown, loose, dry.	0	SS
Stormwater Pond	1/24/2018	Collected as a composite sample from soil at the bottom of the stormwater retention pond. Silt with decayed leaves and pine needles, black, loose, saturated.	0	NS
BLWA-1	1/24/2018	Collected as a composite sample from surficial gravel throughout the western half of the boat lift work area. Sandy gravel with paint chips and shell fragments, brown, loose, moist.	0	NS
BLWA-2	1/24/2018	Collected as a composite sample from surficial gravel throughout the eastern half of the boat lift work area. Sandy gravel with paint chips and shell fragments, brown, loose, moist.	0	NS
FDA-1	1/24/2018	Collected from a test pit excavated in the former dumping area, 9 feet west, and 4 feet north of the northwest corner of the old wood shed at 2 feet bgs. Organic rich silty clay, dark brown, firm, moist.	0	NS
FDA-2	1/24/2018	Collected as a composite sample from the surface to 6 inches bgs at the base of the bluff of the former dumping area using a hand auger 15 feet north of FDA-1 location. Coarse sand, brown with heavy iron staining, loose, wet.	0	NS
FDA-3	1/24/2018	Collected as a composite sample from the base of the bluff at the former dumping area, augered into the bluff 6 inches at 2.5 feet bgs from the top of the bluff, 25 feet west of FDA-2 location. Silty sand with gravel, brown, loose, wet.	0	NS

Table 1. Upland Soil Sample Descriptions - Jensen's Shipyard

Sample ID	Date	Location and Description	PID (ppm)	Sheen Test ^a
UST-1	1/24/2018	Collected from a test pit excavated at the northern side of the estimated former UST location, 20 feet east of gravel path at 5 feet bgs. Silty clay with fine sand, brown, loose to firm, moist.	0	NS
UST-2	1/24/2018	Collected from a test pit excavated at the southern side of the estimated former UST location, 15 feet north of UST-1 at 3 feet bgs. Silty clay with fine sand, brown, loose, moist.	0.0	NS
SRWA-1	1/24/2018	Collected as composite sample from 3 to 6 inches bgs using a hand auger along the sides of the old wood rails at the old shipyard rail work area, 12 feet west of the northwest corner of the old boat building. Coarse sand with gravel and organics, dark brown, loose, wet.	0.0	NS
SRWA-2	1/24/2018	Collected as composite sample from 3 to 6 inches bgs using a hand auger from the old shipyard rail work area, 25 feet north of the northwest corner of the old boat building. Coarse sand with gravel, dark brown, loose, wet.	0.0	NS
SRWA-3	1/24/2018	Collected as a composite sample from the surface to 6 inches bgs using a hand auger from the old shipyard rail work area, 50 feet north, and 10 feet west of the northwest corner of the old boat building. Sand with silts, gray, loose, saturated.	52.7	HS

^a - NS = No Sheen; VSS = Very Slight Sheen; SS = Slight Sheen; MS = Moderate Sheen; HS = Heavy Sheen

Table 2. Upland Soil Sample Results - Jensen's Shipyard

Sample ID	1/24/2018	1/24/2018	1/24/2018	1/24/2018	1/24/2018	1/24/2018	1/24/2018	1/24/2018	1/24/2018	1/24/2018	1/24/2018				
Date	Stop Floor Drain-1	Stop Floor Drain-2	Stop Floor Drain-3	OPALCO Pad	Stemwater Pond	QJVA-1	QJVA-2	PDA-1	PDA-2	PDA-3	UST-1	UST-2	SRVA-1	SRVA-2	SRVA-3
TPH	RTCA Method A Cleanup Level:														
NWTPH-Gx Volatile Range	mg/kg	100/300	ND(<3.0)	ND(<3.0)	NA	NA	NA	NA	NA	NA	ND(<3.0)	ND(<3.0)	NA	NA	84
NWTPH-Dx Diesel Range	mg/kg	2,000	ND(<25)	5,300	NA	160	170	ND(<25)	ND(<25)	ND(<25)	ND(<25)	ND(<25)	180	91	3,900
NWTPH-Ox Oil Range	mg/kg	2,000	ND(<25)	7,800	NA	470	300	ND(<50)	ND(<50)	420	ND(<50)	ND(<50)	1,100	220	940
EPA-8021 Benzene	mg/kg	0.03	ND(<0.03)	ND(<0.03)	NA	NA	NA	NA	NA	NA	ND(<0.03)	ND(<0.03)	NA	NA	ND(<0.03)
EPA-8021 Toluene	mg/kg	7	ND(<0.05)	ND(<0.05)	NA	NA	NA	NA	NA	NA	ND(<0.05)	ND(<0.05)	NA	NA	ND(<0.05)
EPA-8021 Ethylbenzene	mg/kg	6	ND(<0.05)	ND(<0.05)	NA	NA	NA	NA	NA	NA	ND(<0.05)	ND(<0.05)	NA	NA	ND(<0.05)
EPA-8021 Xylenes	mg/kg	9	ND(<0.20)	ND(<0.20)	NA	NA	NA	NA	NA	NA	ND(<0.20)	ND(<0.20)	NA	NA	ND(<0.20)
Metals (EPA-8200/7471)															
Arsenic	mg/kg	20.0	2.2	ND(<0.50)	7.1	10	12	3.5	6.7	3.5	NA	NA	30	14	17
Cadmium	mg/kg	2.0	ND(<0.50)	57	2.2	10	1.3	0.94	ND(<0.5)	ND(<0.5)	NA	NA	0.54	ND(<0.5)	ND(<0.5)
Chromium	mg/kg	19/2000 ^e	19	350	40	43	35	20	21	22	NA	NA	29	18	21
Copper	mg/kg	3200	56	29	8,800	12,000	6,700	16	79	29	NA	NA	2,400	1,100	690
Lead	mg/kg	250.0	2.9	10,000	530	480	700	6.4	52	190	NA	NA	920	1,000	90
Mercury	mg/kg	2.0	ND(<0.02)	0.021	0.15	0.15	0.81	0.028	ND(<0.02)	0.16	NA	NA	13	6.3	0.54
Zinc	mg/kg	-	100	7100	2,300	2,400	930	30	270	220	NA	NA	840	330	560
PCBs (EPA-8082)															
Total PCBs	mg/kg	1.0	NA	NA	NA	NA	NA	NA	NA	NA	NA	NA	NA	NA	0.35
Volatile Organic Compounds (VOCs) (EPA-8160)															
Dichlorodifluoromethane	mg/kg	-	NA	ND(<0.01)	NA	NA	NA	NA	NA	NA	NA	NA	NA	NA	ND(<0.01)
Chloromethane	mg/kg	-	NA	ND(<0.01)	NA	NA	NA	NA	NA	NA	NA	NA	NA	NA	ND(<0.01)
Vinyl Chloride	mg/kg	-	NA	ND(<0.01)	NA	NA	NA	NA	NA	NA	NA	NA	NA	NA	ND(<0.01)
Bromomethane	mg/kg	-	NA	ND(<0.01)	NA	NA	NA	NA	NA	NA	NA	NA	NA	NA	ND(<0.01)
Chloroethane	mg/kg	-	NA	ND(<0.01)	NA	NA	NA	NA	NA	NA	NA	NA	NA	NA	ND(<0.01)
Carbon Tetrachloride	mg/kg	-	NA	ND(<0.01)	NA	NA	NA	NA	NA	NA	NA	NA	NA	NA	ND(<0.01)
Trichlorofluoromethane	mg/kg	-	NA	ND(<0.01)	NA	NA	NA	NA	NA	NA	NA	NA	NA	NA	ND(<0.01)
Carbon Disulfide	mg/kg	-	NA	ND(<0.01)	NA	NA	NA	NA	NA	NA	NA	NA	NA	NA	ND(<0.01)
Acetone	mg/kg	-	NA	ND(<0.01)	NA	NA	NA	NA	NA	NA	NA	NA	NA	NA	ND(<0.01)
1,1-Dichloroethane	mg/kg	-	NA	ND(<0.05)	NA	NA	NA	NA	NA	NA	NA	NA	NA	NA	ND(<0.05)
Methylene Chloride	mg/kg	-	NA	ND(<0.02)	NA	NA	NA	NA	NA	NA	NA	NA	NA	NA	ND(<0.02)
Acrylonitrile	mg/kg	-	NA	ND(<0.05)	NA	NA	NA	NA	NA	NA	NA	NA	NA	NA	ND(<0.05)
Methyl T-Buyl Ether	mg/kg	-	NA	ND(<0.01)	NA	NA	NA	NA	NA	NA	NA	NA	NA	NA	ND(<0.01)
Trans-1,2-Dichloroethane	mg/kg	-	NA	ND(<0.01)	NA	NA	NA	NA	NA	NA	NA	NA	NA	NA	ND(<0.01)
1,1-Dichloroethane	mg/kg	-	NA	ND(<0.01)	NA	NA	NA	NA	NA	NA	NA	NA	NA	NA	ND(<0.01)
2-Butanone	mg/kg	-	NA	ND(<0.05)	NA	NA	NA	NA	NA	NA	NA	NA	NA	NA	ND(<0.05)
Cis-1,2-Dichloroethane	mg/kg	-	NA	ND(<0.01)	NA	NA	NA	NA	NA	NA	NA	NA	NA	NA	ND(<0.01)
2,2-Dichloropropane	mg/kg	-	NA	ND(<0.01)	NA	NA	NA	NA	NA	NA	NA	NA	NA	NA	ND(<0.01)
Bromochloromethane	mg/kg	-	NA	ND(<0.01)	NA	NA	NA	NA	NA	NA	NA	NA	NA	NA	ND(<0.01)
Chloroform	mg/kg	-	NA	ND(<0.01)	NA	NA	NA	NA	NA	NA	NA	NA	NA	NA	ND(<0.01)
1,1,1-Trichloroethane	mg/kg	-	NA	ND(<0.01)	NA	NA	NA	NA	NA	NA	NA	NA	NA	NA	ND(<0.01)
1,1-Dichloropropane	mg/kg	-	NA	ND(<0.01)	NA	NA	NA	NA	NA	NA	NA	NA	NA	NA	ND(<0.01)
1,2-Dichloroethane	mg/kg	-	NA	ND(<0.01)	NA	NA	NA	NA	NA	NA	NA	NA	NA	NA	ND(<0.01)
Trichloroethane	mg/kg	-	NA	ND(<0.01)	NA	NA	NA	NA	NA	NA	NA	NA	NA	NA	ND(<0.01)
1,2-Dichloropropane	mg/kg	-	NA	ND(<0.01)	NA	NA	NA	NA	NA	NA	NA	NA	NA	NA	ND(<0.01)
Dibromomethane	mg/kg	-	NA	ND(<0.01)	NA	NA	NA	NA	NA	NA	NA	NA	NA	NA	ND(<0.01)
Bromodichloromethane	mg/kg	-	NA	ND(<0.01)	NA	NA	NA	NA	NA	NA	NA	NA	NA	NA	ND(<0.01)

Table 2. Upland Soil Sample Results - Jensen's Shipyard

Sample ID	RTCA Method A Cleanup Level:	RTCA Method B Cleanup Level:	Shop Floor Drain-1	Shop Floor Drain-2	Shop Floor Drain-3	OPALCO Pad	Stormwater Pond	BTMA-1	BTMA-2	BTMA-3	UST-1	UST-2	SRVA-1	SRVA-2	SRVA-3
Trans-1,3-Dichloropropene	-	-	NA	ND(<0.01)	NA	NA	NA	NA	NA	NA	NA	NA	NA	NA	ND(<0.01)
4-Methyl-2-Pentane	-	-	NA	ND(<0.05)	NA	NA	NA	NA	NA	NA	NA	NA	NA	NA	ND(<0.05)
Cis-1,3-Dichloropropene	-	-	NA	ND(<0.01)	NA	NA	NA	NA	NA	NA	NA	NA	NA	NA	ND(<0.01)
1,1,2-Trichloroethane	-	-	NA	ND(<0.05)	NA	NA	NA	NA	NA	NA	NA	NA	NA	NA	ND(<0.05)
2-Hexanone	-	-	NA	ND(<0.01)	NA	NA	NA	NA	NA	NA	NA	NA	NA	NA	ND(<0.01)
1,3-Dichloropropane	0.05	-	NA	ND(<0.01)	NA	NA	NA	NA	NA	NA	NA	NA	NA	NA	ND(<0.01)
Tetrachloroethylene	-	-	NA	ND(<0.005)	NA	NA	NA	NA	NA	NA	NA	NA	NA	NA	ND(<0.005)
Dibromochloromethane	-	-	NA	ND(<0.01)	NA	NA	NA	NA	NA	NA	NA	NA	NA	NA	ND(<0.01)
1,2-Dibromoethane	-	-	NA	ND(<0.01)	NA	NA	NA	NA	NA	NA	NA	NA	NA	NA	ND(<0.01)
Chlorobenzene	-	-	NA	ND(<0.01)	NA	NA	NA	NA	NA	NA	NA	NA	NA	NA	ND(<0.01)
1,1,1,2-Tetrachloroethane	-	-	NA	ND(<0.01)	NA	NA	NA	NA	NA	NA	NA	NA	NA	NA	ND(<0.01)
Styrene	-	-	NA	ND(<0.01)	NA	NA	NA	NA	NA	NA	NA	NA	NA	NA	ND(<0.01)
Bromoform	-	-	NA	ND(<0.01)	NA	NA	NA	NA	NA	NA	NA	NA	NA	NA	ND(<0.01)
Isopropylbenzene	-	-	NA	ND(<0.01)	NA	NA	NA	NA	NA	NA	NA	NA	NA	NA	ND(<0.01)
1,1,2,2-Tetrachloroethane	-	-	NA	ND(<0.01)	NA	NA	NA	NA	NA	NA	NA	NA	NA	NA	ND(<0.01)
1,2,3-Trichloropropane	-	-	NA	ND(<0.01)	NA	NA	NA	NA	NA	NA	NA	NA	NA	NA	ND(<0.01)
Bromobenzene	-	-	NA	ND(<0.01)	NA	NA	NA	NA	NA	NA	NA	NA	NA	NA	ND(<0.01)
N-Propyl Benzene	-	-	NA	ND(<0.01)	NA	NA	NA	NA	NA	NA	NA	NA	NA	NA	0.017
2-Chlorotoluene	-	-	NA	ND(<0.01)	NA	NA	NA	NA	NA	NA	NA	NA	NA	NA	ND(<0.01)
1,3,5-Trimethylbenzene	-	-	NA	ND(<0.01)	NA	NA	NA	NA	NA	NA	NA	NA	NA	NA	0.24
4-Chlorotoluene	-	-	NA	ND(<0.01)	NA	NA	NA	NA	NA	NA	NA	NA	NA	NA	ND(<0.01)
T-Butyl Benzene	-	-	NA	ND(<0.01)	NA	NA	NA	NA	NA	NA	NA	NA	NA	NA	0.61
1,2,4-Trinitrylbenzene	-	-	NA	ND(<0.01)	NA	NA	NA	NA	NA	NA	NA	NA	NA	NA	0.033
S-Butyl benzene	-	-	NA	ND(<0.01)	NA	NA	NA	NA	NA	NA	NA	NA	NA	NA	0.033
P-Isopropyltoluene	-	-	NA	ND(<0.01)	NA	NA	NA	NA	NA	NA	NA	NA	NA	NA	ND(<0.01)
1,3-Dichlorobenzene	-	-	NA	ND(<0.01)	NA	NA	NA	NA	NA	NA	NA	NA	NA	NA	ND(<0.01)
1,4-Dichlorobenzene	-	-	NA	ND(<0.01)	NA	NA	NA	NA	NA	NA	NA	NA	NA	NA	0.085
N-Butylbenzene	-	-	NA	ND(<0.01)	NA	NA	NA	NA	NA	NA	NA	NA	NA	NA	ND(<0.01)
1,2-Dichlorobenzene	-	-	NA	ND(<0.01)	NA	NA	NA	NA	NA	NA	NA	NA	NA	NA	ND(<0.01)
1,2-Dichlorobenzene	-	-	NA	ND(<0.05)	NA	NA	NA	NA	NA	NA	NA	NA	NA	NA	ND(<0.05)
1,2-Dibromo 3-Chloropropane	-	-	NA	ND(<0.01)	NA	NA	NA	NA	NA	NA	NA	NA	NA	NA	ND(<0.01)
1,2,4-Trichlorobenzene	-	-	NA	ND(<0.01)	NA	NA	NA	NA	NA	NA	NA	NA	NA	NA	ND(<0.01)
Hexachlorobutadiene	-	-	NA	ND(<0.01)	NA	NA	NA	NA	NA	NA	NA	NA	NA	NA	ND(<0.01)
Naphthalene	S ^b	-	NA	ND(<0.01)	NA	NA	NA	NA	NA	NA	NA	NA	NA	NA	ND(<0.01)
1,2,3-Trichlorobenzene	-	-	NA	ND(<0.01)	NA	NA	NA	NA	NA	NA	NA	NA	NA	NA	ND(<0.01)

Table 2. Upland Soil Sample Results - Jensen's Shipyard

Sample ID	MTCA Method A Cleanup Level:	MTCA Method B Cleanup Level:	Shop Floor Drain-1	Shop Floor Drain-2	Shop Floor Drain-3	GRACO Pad	Stormwater Pond	BWA-1	BWA-2	PDA-1	PDA-2	PDA-3	UST-1	UST-2	SRWA-1	SRWA-2	SRWA-3
Pyridine	-	-	NA	ND(<0.23)	NA	NA	NA	NA	NA	NA	NA	NA	NA	NA	ND(<0.20)	ND(<0.20)	ND(<0.20)
N-Nitrosodimethylamine	-	-	NA	ND(<0.12)	NA	NA	NA	NA	NA	NA	NA	NA	NA	NA	ND(<0.10)	ND(<0.10)	ND(<0.10)
Phenol	-	-	NA	ND(<0.14)	NA	NA	NA	NA	NA	NA	NA	NA	NA	NA	ND(<0.10)	ND(<0.10)	ND(<0.12)
Aniline	-	-	NA	ND(<0.27)	NA	NA	NA	NA	NA	NA	NA	NA	NA	NA	ND(<0.17)	ND(<0.17)	ND(<0.23)
Bis(2-Chloroethyl) Ether	-	-	NA	ND(<0.13)	NA	NA	NA	NA	NA	NA	NA	NA	NA	NA	ND(<0.10)	ND(<0.10)	ND(<0.11)
2-Chlorophenol	-	-	NA	ND(<0.13)	NA	NA	NA	NA	NA	NA	NA	NA	NA	NA	ND(<0.10)	ND(<0.10)	ND(<0.10)
1,3-Dichlorobenzene	-	-	NA	ND(<0.13)	NA	NA	NA	NA	NA	NA	NA	NA	NA	NA	ND(<0.10)	ND(<0.10)	ND(<0.12)
1,4-Dichlorobenzene	-	-	NA	ND(<0.14)	NA	NA	NA	NA	NA	NA	NA	NA	NA	NA	ND(<0.11)	ND(<0.11)	ND(<0.14)
Benzyl alcohol	-	-	NA	0.49	NA	NA	NA	NA	NA	NA	NA	NA	NA	NA	ND(<0.10)	ND(<0.10)	ND(<0.10)
2-Methylphenol	-	-	NA	6.6	NA	NA	NA	NA	NA	NA	NA	NA	NA	NA	ND(<0.10)	ND(<0.10)	ND(<0.13)
Bis(2-Chloroisopropyl) Ether	-	-	NA	2.9	NA	NA	NA	NA	NA	NA	NA	NA	NA	NA	ND(<0.12)	ND(<0.12)	ND(<0.16)
N-Nitroso-Di-N-Propylamine	-	-	NA	ND(<0.24)	NA	NA	NA	NA	NA	NA	NA	NA	NA	NA	ND(<0.13)	ND(<0.13)	ND(<0.20)
Hexachloroethane	-	-	NA	ND(<0.14)	NA	NA	NA	NA	NA	NA	NA	NA	NA	NA	ND(<0.15)	ND(<0.15)	ND(<0.20)
Nitrobenzene	-	-	NA	ND(<0.13)	NA	NA	NA	NA	NA	NA	NA	NA	NA	NA	ND(<0.10)	ND(<0.10)	ND(<0.10)
Isophorone	-	-	NA	ND(<0.25)	NA	NA	NA	NA	NA	NA	NA	NA	NA	NA	ND(<0.10)	ND(<0.10)	ND(<0.10)
2-Nitrophenol	-	-	NA	2.6	NA	NA	NA	NA	NA	NA	NA	NA	NA	NA	ND(<0.10)	ND(<0.10)	ND(<0.10)
2,4-Dimethylphenol	-	-	NA	ND(<1.0)	NA	NA	NA	NA	NA	NA	NA	NA	NA	NA	ND(<1.0)	ND(<1.0)	ND(<1.0)
Benzic Acid	-	-	NA	ND(<0.10)	NA	NA	NA	NA	NA	NA	NA	NA	NA	NA	ND(<0.10)	ND(<0.10)	ND(<0.10)
Bis(2-Chloroethoxy)Methane	-	-	NA	ND(<0.11)	NA	NA	NA	NA	NA	NA	NA	NA	NA	NA	ND(<0.10)	ND(<0.10)	ND(<0.10)
2,4-Dichlorophenol	-	-	NA	ND(<0.15)	NA	NA	NA	NA	NA	NA	NA	NA	NA	NA	ND(<0.10)	ND(<0.10)	ND(<0.12)
1,2,4-Trichlorobenzene	-	-	NA	0.652	NA	NA	NA	NA	NA	NA	NA	NA	NA	NA	0.12	0.0071	ND(<0.10)
Naphthalene	5 ^b	5 ^b	NA	0.076	NA	NA	NA	NA	NA	NA	NA	NA	NA	NA	0.0087	0.0041	1.2
4-Chloroaniline	-	-	NA	ND(<0.32)	NA	NA	NA	NA	NA	NA	NA	NA	NA	NA	ND(<0.20)	ND(<0.20)	ND(<0.26)
2,6-Dichlorophenol	-	-	NA	ND(<0.15)	NA	NA	NA	NA	NA	NA	NA	NA	NA	NA	ND(<0.10)	ND(<0.10)	ND(<0.13)
Hexachlorobutadiene	-	-	NA	ND(<0.16)	NA	NA	NA	NA	NA	NA	NA	NA	NA	NA	ND(<0.10)	ND(<0.10)	ND(<0.18)
4-Chloro-3-Methylphenol	-	-	NA	ND(<0.22)	NA	NA	NA	NA	NA	NA	NA	NA	NA	NA	ND(<0.10)	ND(<0.10)	ND(<0.11)
2-Methylnaphthalene	5 ^b	5 ^b	NA	0.085	NA	NA	NA	NA	NA	NA	NA	NA	NA	NA	0.0052	0.0052	0.9
1-Methylnaphthalene	-	-	NA	0.076	NA	NA	NA	NA	NA	NA	NA	NA	NA	NA	ND(<0.50)	ND(<0.50)	ND(<0.50)
Hexachlorocyclopentadiene	-	-	NA	ND(<0.50)	NA	NA	NA	NA	NA	NA	NA	NA	NA	NA	ND(<0.50)	ND(<0.50)	ND(<0.50)
2,4,6-Trichlorophenol	-	-	NA	ND(<0.20)	NA	NA	NA	NA	NA	NA	NA	NA	NA	NA	ND(<0.10)	ND(<0.10)	ND(<0.17)
2,4,5-Trichlorophenol	-	-	NA	ND(<0.10)	NA	NA	NA	NA	NA	NA	NA	NA	NA	NA	ND(<0.12)	ND(<0.12)	ND(<0.17)
2-Chloronaphthalene	-	-	NA	ND(<0.25)	NA	NA	NA	NA	NA	NA	NA	NA	NA	NA	ND(<0.10)	ND(<0.10)	ND(<0.25)
2-Nitroaniline	-	-	NA	ND(<0.0002)	NA	NA	NA	NA	NA	NA	NA	NA	NA	NA	ND(<0.25)	ND(<0.25)	ND(<0.25)
Acenaphthylene	-	-	NA	ND(<0.17)	NA	NA	NA	NA	NA	NA	NA	NA	NA	NA	0.077	0.077	ND(<0.00002)
Dimethylphthalate	-	-	NA	ND(<0.25)	NA	NA	NA	NA	NA	NA	NA	NA	NA	NA	0.29	0.64	ND(<0.14)
2,6-Dinitrotoluene	-	-	NA	ND(<0.25)	NA	NA	NA	NA	NA	NA	NA	NA	NA	NA	ND(<0.25)	ND(<0.25)	ND(<0.25)
Acenaphthene	-	-	NA	ND(<0.00002)	NA	NA	NA	NA	NA	NA	NA	NA	NA	NA	0.012	0.012	ND(<0.00002)
3-Nitroaniline	-	-	NA	ND(<0.25)	NA	NA	NA	NA	NA	NA	NA	NA	NA	NA	ND(<0.25)	ND(<0.25)	ND(<0.25)
4-Dinitrophenol	-	-	NA	ND(<0.30)	NA	NA	NA	NA	NA	NA	NA	NA	NA	NA	ND(<0.25)	ND(<0.25)	ND(<0.25)
4-Nitrophenol	-	-	NA	ND(<0.50)	NA	NA	NA	NA	NA	NA	NA	NA	NA	NA	ND(<0.50)	ND(<0.50)	ND(<0.50)
Dibenzofuran	-	-	NA	ND(<0.16)	NA	NA	NA	NA	NA	NA	NA	NA	NA	NA	ND(<0.10)	ND(<0.10)	ND(<0.14)
2,4-Dinitrotoluene	-	-	NA	ND(<0.25)	NA	NA	NA	NA	NA	NA	NA	NA	NA	NA	ND(<0.25)	ND(<0.25)	ND(<0.25)
2,3,4,6-Tetrachlorophenol	-	-	NA	ND(<0.25)	NA	NA	NA	NA	NA	NA	NA	NA	NA	NA	ND(<0.25)	ND(<0.25)	ND(<0.25)
Diethylphthalate	-	-	NA	ND(<0.17)	NA	NA	NA	NA	NA	NA	NA	NA	NA	NA	ND(<0.10)	ND(<0.10)	ND(<0.14)
Fluorene	-	-	NA	ND(<0.00002)	NA	NA	NA	NA	NA	NA	NA	NA	NA	NA	ND(<0.12)	ND(<0.12)	ND(<0.12)

Table 2. Upland Soil Sample Results - Jensen's Shipyard

Sample ID	mg/kg	MTCA Method A Cleanup Level:	MTCA Method B Cleanup Level:	Shop Floor Drain-1	Shop Floor Drain-2	Shop Floor Drain-3	OPALCO Pad	Stormwater Pond	BLVA-1	BLVA-2	FDA-1	FDA-2	FDA-3	UST-1	UST-2	SRAVA-1	SRAVA-2	SRAVA-3
4-Chlorophenyl-Phenylether	mg/kg	-	-	NA	ND(<0.21)	NA	NA	NA	NA	NA	NA	NA	NA	NA	NA	ND(<0.13)	ND(<0.13)	ND(<0.17)
4-Nitroaniline	mg/kg	-	-	NA	ND(<0.39)	NA	NA	NA	NA	NA	NA	NA	NA	NA	NA	ND(<0.25)	ND(<0.25)	ND(<0.29)
4,6-Dinitro-2-Methylphenol	mg/kg	-	-	NA	ND(<0.34)	NA	NA	NA	NA	NA	NA	NA	NA	NA	NA	ND(<0.19)	ND(<0.15)	ND(<0.29)
N-Nitrosodiphenylamine	mg/kg	-	-	NA	ND(<0.18)	NA	NA	NA	NA	NA	NA	NA	NA	NA	NA	ND(<0.11)	ND(<0.11)	ND(<0.15)
Azobenzene	mg/kg	-	-	NA	ND(<0.18)	NA	NA	NA	NA	NA	NA	NA	NA	NA	NA	ND(<0.10)	ND(<0.10)	ND(<0.15)
4-Bromophenyl-Phenylether	mg/kg	-	-	NA	ND(<0.15)	NA	NA	NA	NA	NA	NA	NA	NA	NA	NA	ND(<0.10)	ND(<0.10)	ND(<0.13)
Hexachlorobenzene	mg/kg	-	-	NA	ND(<0.12)	NA	NA	NA	NA	NA	NA	NA	NA	NA	NA	ND(<0.50)	ND(<0.50)	ND(<0.10)
Pentachlorophenol	mg/kg	-	-	NA	ND(<0.50)	NA	NA	NA	NA	NA	NA	NA	NA	NA	NA	ND(<0.10)	ND(<0.10)	ND(<0.10)
Phenanthrene	mg/kg	-	-	NA	0.27	NA	NA	NA	NA	NA	NA	NA	NA	NA	NA	0.25	0.13	0.62
Anthracene	mg/kg	-	-	NA	0.21	NA	NA	NA	NA	NA	NA	NA	NA	NA	NA	0.11	0.053	ND
Carbazole	mg/kg	-	-	NA	ND(<0.33)	NA	NA	NA	NA	NA	NA	NA	NA	NA	NA	ND(<0.20)	ND(<0.20)	ND(<0.27)
Di-N-Butylphthalate	mg/kg	-	-	NA	ND(<0.14)	NA	NA	NA	NA	NA	NA	NA	NA	NA	NA	ND(<0.13)	ND(<0.13)	ND(<0.13)
Fluoranthene	mg/kg	-	-	NA	ND(<0.0002)	NA	NA	NA	NA	NA	NA	NA	NA	NA	NA	0.67	0.21	0.62
Pyrene	mg/kg	-	-	NA	0.79	NA	NA	NA	NA	NA	NA	NA	NA	NA	NA	0.65	0.21	0.57
Burylbenzophthalate	mg/kg	-	-	NA	ND(<0.19)	NA	NA	NA	NA	NA	NA	NA	NA	NA	NA	ND(<0.12)	ND(<0.12)	ND(<0.16)
3,3-Dichlorobenzidine	mg/kg	-	-	NA	ND(<0.81)	NA	NA	NA	NA	NA	NA	NA	NA	NA	NA	ND(<0.51)	ND(<0.51)	ND(<0.68)
Benzo[A]Anthracene	mg/kg	-	-	NA	0.41	NA	NA	NA	NA	NA	NA	NA	NA	NA	NA	0.4	0.11	0.21
Chrysene	mg/kg	-	-	NA	0.63	NA	NA	NA	NA	NA	NA	NA	NA	NA	NA	0.53	0.12	0.34
Bis(2-ethylhexyl)phthalate	mg/kg	-	-	NA	5.3	NA	NA	NA	NA	NA	NA	NA	NA	NA	NA	ND(<0.13)	ND(<0.13)	0.21
Di-N-Octylphthalate	mg/kg	-	-	NA	ND(<0.19)	NA	NA	NA	NA	NA	NA	NA	NA	NA	NA	ND(<0.12)	ND(<0.12)	ND(<0.16)
Benzo[B]Fluoranthene	mg/kg	-	-	NA	ND(<0.0002)	NA	NA	NA	NA	NA	NA	NA	NA	NA	NA	0.81	0.2	0.49
Benzo[K]Fluoranthene	mg/kg	-	-	NA	ND(<0.0002)	NA	NA	NA	NA	NA	NA	NA	NA	NA	NA	0.28	ND(<0.11)	ND(<0.0002)
Benzo[a]Pyrene	mg/kg	0.1	-	NA	ND(<0.0002)	NA	NA	NA	NA	NA	NA	NA	NA	NA	NA	0.52	0.14	0.22
Indeno[1,2,3-Cd]Pyrene	mg/kg	-	-	NA	0.16	NA	NA	NA	NA	NA	NA	NA	NA	NA	NA	0.4	0.12	0.15
Dibenz[a,h]Anthracene	mg/kg	-	-	NA	0.39	NA	NA	NA	NA	NA	NA	NA	NA	NA	NA	0.11	ND(<0.10)	ND(<0.0002)
Benzo[G,H,I]perylene	mg/kg	-	-	NA	0.39	NA	NA	NA	NA	NA	NA	NA	NA	NA	NA	0.57	0.19	0.17
Total ePAH Equivalent [TEQ]	mg/kg	0.1	0.137	NA	0.0753	NA	NA	NA	NA	NA	NA	NA	NA	NA	NA	0.7253	0.1862	0.3044

* - Cleanup level dependent on BTEX concentrations

b - indicates sum of naphthalene, 1-methylanthracene, and 2-acetylphenanthrene

c - indicates cleanup level is dependent on Chromane(VI) concentrations

ND - indicates analyte was not detected at level above reporting limit (shown in parentheses)

NA - indicates sample was not analyzed for the constituent

TEQ - Toxicity Equivalency to benzo[a]pyrene, calculated by multiplying result by appropriate TEF. For ND values, the TEF was multiplied by one-half the reporting limit

TEF - Toxicity Equivalency Factor (WAC 175-340-010 table 705.2)

Table 1. Upland Soil Sample Descriptions

Sample ID	Date	Location and Description	PID (ppm)	Sheen Test ^a
Shop Floor Drain-1	1/24/2018	Collected using a hand auger 1 foot west of the northwest corner of the shop at 3.5 feet bgs. Coarse sand with gravel, brown, loose, moist.	0	VSS
Shop Floor Drain-2	1/24/2018	Collected using a hand auger 2 feet east, and 2 feet north of the northwest corner of the shop at 3.5 feet bgs. Silty sand with organics, dark brown, firm, dry.	0	NS
OPALCO Pad	1/24/2018	Collected as a composite sample from 1 to 4 inches bgs, 15 feet west of the northeast corner of the old OPALCO pad. Coarse gravel with sand and organics, brown, loose, dry.	0	SS
OPALCO-2 2-6in	7/31/2018	Collected as a composite sample from 2 to 6 inches bgs, adjacent to the west corner of the old OPALCO pad. Gravelly sand with silt, brown, soft to slightly firm, dry.	1.5	NS
OPALCO-2 5ft	7/31/2018	Collected as a grab sample from 5 feet bgs, adjacent to the west corner of the old OPALCO pad. Sandy gravel, brown, soft, dry.	2.1	VSS
OPALCO-3 2-6in	7/31/2018	Collected as a composite sample from 2 to 6 inches bgs, adjacent to the north corner of the old OPALCO pad. Silty sandy gravel, brown/gray, soft, dry.	0	VSS
OPALCO-3 4ft	7/31/2018	Collected as a grab sample from 4 feet bgs, adjacent to the north corner of the old OPALCO pad. Silty sandy gravel, brown, soft, dry.	1	VSS
OPALCO-4 2-6in	7/31/2018	Collected as a composite sample from 2 to 6 inches bgs, approximately 45 feet south of the eastern corner of the old OPALCO pad. Silty fine sand, brown, soft, dry.	0	VSS
OPALCO-4 5ft	7/31/2018	Collected as a grab sample from 5 feet bgs, approximately 45 feet south of the eastern corner of the old OPALCO pad. Silty medium sand, brown, soft, dry.	0	NS
SYC-1 2-6in	7/31/2018	Collected as a composite sample from 2 to 6 inches bgs, off the east side of the entrance road above the southwest corner of the covered storage structure. Silty fine sand with gravel, brown, soft, dry.	0	VSS
SYC-1 2ft	7/31/2018	Collected as a grab sample from 2 feet bgs, off the east side of the entrance road above the southwest corner of the covered storage structure. Silty fine sand with gravel, brown, soft, dry.	0	VSS
SYC-2 2-6in	7/31/2018	Collected as a composite sample from 2 to 6 inches bgs, off the west side of the entry road in the gravel parking area. Silty sandy gravel with organics, gray to brown, soft, dry.	0	SS

Table 1. Upland Soil Sample Descriptions

Sample ID	Date	Location and Description	PID (ppm)	Sheen Test ^a
SYC-2 2ft	7/31/2018	Collected as a grab sample from 2 feet bgs, off the west side of the entry road in the gravel parking area. Sandy gravel with minor silt, brown, soft, dry.	0	SS
SYC-3 2-6in	7/31/2018	Collected as a composite sample from 2 to 6 inches bgs, off the west side of the road at the southeast corner of the covered storage structure. Silty sandy gravel with organics, gray, soft, dry.	0	VSS
SYC-3 3ft	7/31/2018	Collected as a grab sample from 3 feet bgs, off the west side of the road at the southeast corner of the covered storage structure. Gravelly sand, brown, soft, moist to dry.	0	VSS
SYC-4 2-6in	7/31/2018	Collected as a composite sample from 2 to 6 inches bgs, off the east side of the road near the gate between the properties. Sandy silty gravel, brown to gray, soft, dry to moist.	0	VSS
SYC-4 2ft	7/31/2018	Collected as a grab sample from 2 feet bgs, off the east side of the road near the gate between the properties. Sandy silty gravel, brown to gray, soft, dry to moist.	0	SS
MW-4 2-6in	7/31/2018	Collected as a composite sample from 2 to 6 inches bgs, adjacent to the east corner of the old OPALCO pad at monitoring well location. Silty sandy gravel, brown, soft, dry.	0	NS
MW-4 11ft	7/31/2018	Collected as a grab sample from 11 feet bgs, adjacent to the east corner of the old OPALCO pad at monitoring well location. Gravelly silty coarse sand, reddish brown, slightly firm, wet.	0	NS
MW-5 2-6in	8/1/2018	Collected as a composite sample from 2 to 6 inches bgs, located in the grassy area to the east of the shipyard at monitoring well location. Fine sandy silt with gravel, tan to brown, soft, dry.	0	VSS
MW-5 10ft	8/1/2018	Collected as a grab sample from 10 feet bgs, located in the grassy area to the east of the shipyard at monitoring well location. Silty clayey medium sand with gravel, olive brown, hard to firm, wet.	0	VSS
MW-6 2-6in	7/31/2018	Collected as a composite sample from 2 to 6 inches bgs, adjacent to the north edge of the upper parking area at monitoring well location. Gravelly silt to silty gravel, tan to brown, soft, dry.	0	VSS
MW-6 40ft	7/31/2018	Collected as a grab sample from 40 feet bgs, adjacent to the north edge of the upper parking area at monitoring well location. Coarse sandy gravel, brown to olive brown, firm, wet.	0	NS
Stormwater Pond	1/24/2018	Collected as a composite sample from soil at the bottom of the stormwater retention pond.	0	NS

Table 1. Upland Soil Sample Descriptions

Sample ID	Date	Location and Description	PID (ppm)	Sheen Test ^a
		Silt with decayed leaves and pine needles, black, loose, saturated.		
BLWA-1	1/24/2018	Collected as a composite sample from surficial gravel throughout the western half of the boat lift work area. Sandy gravel with paint chips and shell fragments, brown, loose, moist.	0	NS
BLWA-2	1/24/2018	Collected as a composite sample from surficial gravel throughout the eastern half of the boat lift work area. Sandy gravel with paint chips and shell fragments, brown, loose, moist.	0	NS
BLWA-3 2-6in	7/30/2018	Collected as a composite sample from 2 to 6 inches bgs from soil located at the west side of the boat lift area Silty sandy gravel, brown, soft, dry.	0	NS
BLWA-3 2ft	7/30/2018	Collected as a grab sample from 2 feet bgs from soil located at the west side of the boat lift area Silty sandy gravel, brown, soft, dry.	0	NS
BLWA-4 2-6"	7/30/2018	Collected as a composite sample from 2 to 6 inches bgs in the northwest quadrant of the boat lift area. Silty sandy gravel, brown, soft, dry.	0	NS
BLWA-4 5ft	7/30/2018	Collected as a grab sample from 5 feet bgs in the northwest quadrant of the boat lift area. Sandy silt with gravel, dark brown, soft to slightly firm, moist.	0	NS
BLWA-5 2-6in	7/30/2018	Collected as a composite sample from 2 to 6 inches bgs in the southwest quadrant of the boat lift area. Silty sandy gravel, brown, soft, dry.	0.5	NS
BLWA-5 2ft	7/30/2018	Collected as a grab sample from 2 feet bgs in the southwest quadrant of the boat lift area. Silty sandy gravel, brown, soft, dry.	0	NS
BLWA-6 2-6in	7/30/2018	Collected as a composite sample from 2 to 6 inches bgs in the northern center of the boat lift area. Silty sandy gravel, brown, soft, dry.	2.1	NS
BLWA-6 2ft	7/30/2018	Collected as a grab sample from 2 feet bgs in the northern center of the boat lift area. Silty sandy gravel, brown, soft, dry.	4.2	VSS
BLWA-6 5ft	7/30/2018	Collected as a grab sample from 5 feet bgs in the northern center of the boat lift area. Sandy silt with gravel, woody debris, dark brown, slightly firm, moist.	186	MS
BLWA-6 10ft	7/30/2018	Collected as a grab sample from 10 feet bgs in the northern center of the boat lift area. Sandy gravel with woody debris, reddish brown, soft, wet.	8	VSS

Table 1. Upland Soil Sample Descriptions

Sample ID	Date	Location and Description	PID (ppm)	Sheen Test ^a
BLWA-7 2-6in	7/30/2018	Collected as a composite sample from 2 to 6 inches bgs in the southern center of the boat lift area. Silty sandy gravel, brown, soft to slightly firm, dry.	0	NS
BLWA-7 2ft	7/30/2018	Collected as a grab sample from 2 feet bgs in the southern center of the boat lift area. Silty sandy gravel, brown, soft to slightly firm, dry.	0	NS
BLWA-7 5ft	7/30/2018	Collected as a grab sample from 5 feet bgs in the southern center of the boat lift area. Sandy silt with gravel and minor clay, dark brown, firm, moist.	0	NS
BLWA-8 2-6in	7/30/2018	Collected as a composite sample from 2 to 6 inches bgs in the northeast quadrant of the boat lift area. Silty sandy gravel, brown, soft, dry.	3.8	VSS
BLWA-8 2ft	7/30/2018	Collected as a grab sample from 2 feet bgs in the northeast quadrant of the boat lift area. Silty sandy gravel, brown, soft, dry.	3.4	VSS
BLWA-8 5ft	7/30/2018	Collected as a grab sample from 5 feet bgs in the northeast quadrant of the boat lift area. Gravelly silty sand, reddish brown, soft to slightly firm, moist.	0	NS
BLWA-9 2-6in	7/30/2018	Collected as a composite sample from 2 to 6 inches bgs in the southeast quadrant of the boat lift area. Silty sandy gravel, brown, soft, dry.	0.2	NS
BLWA-9 2ft	7/30/2018	Collected as a grab sample from 2 feet bgs in the southeast quadrant of the boat lift area. Silty sandy gravel, brown, soft, dry.	4.1	VSS
BLWA-9 5ft	7/30/2018	Collected as a grab sample from 5 feet bgs in the southeast quadrant of the boat lift area. Gravelly sandy silt, reddish brown, soft, moist.	2.9	NS
AST-1 2ft	7/30/2018	Collected as a grab sample from approximately 2 feet bgs at a location south of the shop building where evidence of a removed AST was observed. Gravelly sandy silt, dark brown to black, slightly firm, moist.	91	HS
MW-1 2-6in	7/30/2018	Collected as a composite sample from 2 to 6 inches bgs at a location north of the shop building at monitoring well location. Silty sandy gravel, brown, soft, dry.	0	VSS
MW-1 12ft	7/30/2018	Collected as a grab sample from 12 feet bgs at a location north of the shop building at monitoring well location. Sandy gravel, gray, soft, wet.	407	SS
MW-1 15ft	7/30/2018	Collected as a grab sample from 15 feet bgs at a location north of the shop building at monitoring well location. Sandy gravel, gray, soft, wet.	5.6	NS

Table 1. Upland Soil Sample Descriptions

Sample ID	Date	Location and Description	PID (ppm)	Sheen Test ^a
MW-2 6in	7/30/2018	Collected as a grab sample from 6 inches bgs at a location approximately 90 feet south/southwest of the boat lift dock at monitoring well location. Silty sandy gravel, brown, soft, dry.	0	VSS
MW-2 7ft	7/30/2018	Collected as a grab sample from 7 feet bgs at a location approximately 90 feet south/southwest of the boat lift dock at monitoring well location. Organic silty sandy gravel, dark brown to black, slightly firm, wet.	0	NS
FDA-1	1/24/2018	Collected from a test pit excavated in the former dumping area, 9 feet west, and 4 feet north of the northwest corner of the old wood shed at 2 feet bgs. Organic rich silty clay, dark brown, firm, moist.	0	NS
FDA-2	1/24/2018	Collected as a composite sample from the surface to 6 inches bgs at the base of the bluff of the former dumping area using a hand auger 15 feet north of FDA-1 location. Coarse sand, brown with heavy iron staining, loose, wet.	0	NS
FDA-3	1/24/2018	Collected as a composite sample from the base of the bluff at the former dumping area, augered into the bluff 6 inches at 2.5 feet bgs from the top of the bluff, 25 feet west of FDA-2 location. Silty sand with gravel, brown, loose, wet.	0	NS
UST-1	1/24/2018	Collected from a test pit excavated at the northern side of the estimated former UST location, 20 feet east of gravel path at 5 feet bgs. Silty clay with fine sand, brown, loose to firm, moist.	0	NS
UST-2	1/24/2018	Collected from a test pit excavated at the southern side of the estimated former UST location, 15 feet north of UST-1 at 3 feet bgs. Silty clay with fine sand, brown, loose, moist.	0.0	NS
SRWA-1	1/24/2018	Collected as composite sample from 3 to 6 inches bgs using a hand auger along the sides of the old wood rails at the old shipyard rail work area, 12 feet west of the northwest corner of the old boat building. Coarse sand with gravel and organics, dark brown, loose, wet.	0.0	NS
SRWA-2	1/24/2018	Collected as composite sample from 3 to 6 inches bgs using a hand auger from the old shipyard rail work area, 25 feet north of the northwest corner of the old boat building. Coarse sand with gravel, dark brown, loose, wet.	0.0	NS
SRWA-3	1/24/2018	Collected as a composite sample from the surface to 6 inches bgs using a hand auger from the old shipyard rail work area, 50 feet north, and 10 feet west of the northwest corner of the old boat building. Sand with silts, gray, loose, saturated.	52.7	HS

Table 1. Upland Soil Sample Descriptions

Sample ID	Date	Location and Description	PID (ppm)	Sheen Test ^a
SRWA-4 6in	8/1/2018	Collected as a grab sample from 6 inches bgs at a location in the northwest quadrant of the old rail works area; in rail track groove. Sandy gravel, gray, soft, moist.	0	NS
SRWA-4 3.5ft	8/1/2018	Collected as a grab sample from 3.5 feet bgs at a location in the northwest quadrant of the old rail works area; in rail track groove. Highly organic sandy silty gravel, reddish brown, soft, wet.	0	NS
SRWA-5 2-6in	8/1/2018	Collected as a composite sample from 2 to 6 inches bgs in the northern center of the old rail works area. Organic silty sand and gravel, brown, soft, moist.	1.5	VSS
SRWA-5 3.5 ft	8/1/2018	Collected as a grab sample from 3.5 feet bgs in the northern center of the old rail works area. Highly organic silty sand with gravel, dark brown to black, soft, wet.	36.7	NS
SRWA-5 5ft	8/1/2018	Collected as a grab sample from 5 feet bgs in the northern center of the old rail works area. Highly organic silty sand with gravel, dark brown to black, soft, wet.	24.1	VSS
SRWA-6 2-6in	8/1/2018	Collected as a composite sample from 2 to 6 inches bgs in the southern portion of the northeast quadrant of the old rail works area. Gravelly medium sand with heavy organics, reddish brown to brown, soft, dry.	0.7	NS
SRWA-6 3ft	8/1/2018	Collected as a grab sample from 3 feet bgs in the southern portion of the northeast quadrant of the old rail works area. Silty medium sand with gravel, reddish brown, soft, wet.	0	VSS
SRWA-7 2-6in	8/1/2018	Collected as a composite sample from 2 to 6 inches bgs in the southwest quadrant of the old rail works area. Silty gravelly sand, reddish brown to brown, slightly firm, moist to dry.	0	VSS
SRWA-7 3ft	8/1/2018	Collected as a grab sample from 3 feet bgs in the southwest quadrant of the old rail works area. Silty gravelly sand, reddish brown to brown, slightly firm, moist to dry.	0	VSS
MW-3 2-6in	8/1/2018	Collected as a composite sample from 2 to 6 inches bgs in the northern portion of the southwest quadrant of the old rail works area at monitoring well location. Fine sandy silt with gravel, tan, soft, dry.	0	NS
MW-3 5.5ft	8/1/2018	Collected as a grab sample from 5.5 feet bgs in the northern portion of the southwest quadrant of the old rail works area at monitoring well location. Saturated coarse sand with gravel, brown, soft, wet.	0	NS

^a - NS = No Sheen; VSS = Very Slight Sheen; SS = Slight Sheen; MS = Moderate Sheen; HS = Heavy Sheen

Table 2. Upland Soil Sample Results

Sample ID	Date	MTC Method A Cleanup Level (or Method B as noted)	Ecology Indicators Soil Concentrations (Table 749-3)	1/24/2018		1/24/2018		7/31/2018		7/31/2018		7/31/2018		7/31/2018		7/31/2018		7/31/2018		
				Shop Floor Drain-1 3.5R	Shop Floor Drain-2 3.5R	OPALCO Pad 1.4in	OPALCO 2.6in	OPALCO 2.6in	OPALCO 2.6in	OPALCO 3.4R	OPALCO 4.2.6in	OPALCO 4.5R	OPALCO 4.5R	OPALCO 4.5R	OPALCO 4.5R	OPALCO 4.5R	OPALCO 4.5R	OPALCO 4.5R	OPALCO 4.5R	OPALCO 4.5R
TPH [mg/kg]																				
NWTFH-GK Volatile Range	100/30 ^b	5,000	ND(<3.0)	ND(<3.0)	ND(<3.0)	ND(<3.0)	ND(<3.0)	ND(<3.0)	ND(<3.0)	ND(<3.0)	ND(<3.0)	ND(<3.0)	ND(<3.0)	ND(<3.0)	ND(<3.0)	ND(<3.0)	ND(<3.0)	ND(<3.0)	ND(<3.0)	ND(<3.0)
NWTFH-DK Diesel Range	2,000	6,000	ND(<25)	ND(<25)	ND(<25)	ND(<25)	ND(<25)	ND(<25)	ND(<25)	ND(<25)	ND(<25)	ND(<25)	ND(<25)	ND(<25)	ND(<25)	ND(<25)	ND(<25)	ND(<25)	ND(<25)	ND(<25)
NWTFH-DK Oil Range	2,000	6,000	ND(<25)	ND(<25)	ND(<25)	ND(<25)	ND(<25)	ND(<25)	ND(<25)	ND(<25)	ND(<25)	ND(<25)	ND(<25)	ND(<25)	ND(<25)	ND(<25)	ND(<25)	ND(<25)	ND(<25)	ND(<25)
EPA-8021 Benzene	0.03	-	ND(<0.03)	ND(<0.03)	ND(<0.03)	ND(<0.03)	ND(<0.03)	ND(<0.03)	ND(<0.03)	ND(<0.03)	ND(<0.03)	ND(<0.03)	ND(<0.03)	ND(<0.03)	ND(<0.03)	ND(<0.03)	ND(<0.03)	ND(<0.03)	ND(<0.03)	ND(<0.03)
EPA-8021 Toluene	7	200	ND(<0.05)	ND(<0.05)	ND(<0.05)	ND(<0.05)	ND(<0.05)	ND(<0.05)	ND(<0.05)	ND(<0.05)	ND(<0.05)	ND(<0.05)	ND(<0.05)	ND(<0.05)	ND(<0.05)	ND(<0.05)	ND(<0.05)	ND(<0.05)	ND(<0.05)	ND(<0.05)
EPA-8021 Ethylbenzene	6	-	ND(<0.05)	ND(<0.05)	ND(<0.05)	ND(<0.05)	ND(<0.05)	ND(<0.05)	ND(<0.05)	ND(<0.05)	ND(<0.05)	ND(<0.05)	ND(<0.05)	ND(<0.05)	ND(<0.05)	ND(<0.05)	ND(<0.05)	ND(<0.05)	ND(<0.05)	ND(<0.05)
EPA-8021 Xylenes	9	-	ND(<0.20)	ND(<0.20)	ND(<0.20)	ND(<0.20)	ND(<0.20)	ND(<0.20)	ND(<0.20)	ND(<0.20)	ND(<0.20)	ND(<0.20)	ND(<0.20)	ND(<0.20)	ND(<0.20)	ND(<0.20)	ND(<0.20)	ND(<0.20)	ND(<0.20)	ND(<0.20)
Metals [EPA-6020/7471] [mg/kg]																				
Arsenic	20.0	132	1.9	7.1	4.1	4.1	4.1	4.1	4.1	4.1	4.1	4.1	4.1	4.1	4.1	4.1	4.1	4.1	4.1	4.1
Cadmium	2.0	14	ND(<0.50)	ND(<0.50)	ND(<0.50)	ND(<0.50)	ND(<0.50)	ND(<0.50)	ND(<0.50)	ND(<0.50)	ND(<0.50)	ND(<0.50)	ND(<0.50)	ND(<0.50)	ND(<0.50)	ND(<0.50)	ND(<0.50)	ND(<0.50)	ND(<0.50)	ND(<0.50)
Chromium	19/2000 ^c	67	19	12	40	17	16	15	15	15	15	15	15	15	15	15	15	15	15	15
Copper	3,200 ^d	217	56	29	1,100	68	45	44	44	44	44	44	44	44	44	44	44	44	44	44
Lead	250.0	118	2.9	530	5.4	2.1	2.1	2.1	2.1	2.1	2.1	2.1	2.1	2.1	2.1	2.1	2.1	2.1	2.1	2.1
Mercury	2.0	5.5	ND(<0.02)	ND(<0.02)	ND(<0.02)	ND(<0.02)	ND(<0.02)	ND(<0.02)	ND(<0.02)	ND(<0.02)	ND(<0.02)	ND(<0.02)	ND(<0.02)	ND(<0.02)	ND(<0.02)	ND(<0.02)	ND(<0.02)	ND(<0.02)	ND(<0.02)	ND(<0.02)
Zinc	24,000 ^e	360	100	2,300	2,600	250	720	31	74	31	74	31	74	31	74	31	74	31	74	31
PCBs [EPA-8082] [mg/kg]																				
Total PCBs	1.0	0.65	NA	NA	ND(<0.10)	ND(<0.10)	ND(<0.10)	ND(<0.10)	ND(<0.10)	ND(<0.10)	ND(<0.10)	ND(<0.10)	ND(<0.10)	ND(<0.10)	ND(<0.10)	ND(<0.10)	ND(<0.10)	ND(<0.10)	ND(<0.10)	ND(<0.10)
Dioxins and Furans [EPA-1613B] [pg/kg]																				
Chlorinated dibenzo-p-dioxins TEC	0.0128 ^f	0.002	NA	NA	NA	NA	NA	NA	NA	NA	NA	NA	NA	NA	NA	NA	NA	NA	NA	NA
Semi-Volatile Organic Compounds (SVOCs) [EPA-8270-SIM] [mg/kg]																				
Naphthalene	5 ^g	-	NA	NA	ND(<0.02)	ND(<0.02)	0.04	0.032	ND(<0.02)	ND(<0.02)	ND(<0.02)	ND(<0.02)	ND(<0.02)	ND(<0.02)	ND(<0.02)	ND(<0.02)	ND(<0.02)	ND(<0.02)	ND(<0.02)	ND(<0.02)
1-Methylnaphthalene	5 ^h	-	NA	NA	ND(<0.02)	ND(<0.02)	ND(<0.02)	ND(<0.02)	ND(<0.02)	ND(<0.02)	ND(<0.02)	ND(<0.02)	ND(<0.02)	ND(<0.02)	ND(<0.02)	ND(<0.02)	ND(<0.02)	ND(<0.02)	ND(<0.02)	ND(<0.02)
2-Methylnaphthalene	5 ^h	-	NA	NA	ND(<0.02)	ND(<0.02)	ND(<0.02)	ND(<0.02)	ND(<0.02)	ND(<0.02)	ND(<0.02)	ND(<0.02)	ND(<0.02)	ND(<0.02)	ND(<0.02)	ND(<0.02)	ND(<0.02)	ND(<0.02)	ND(<0.02)	ND(<0.02)
Acenaphthylene	4,800 ⁱ	-	NA	NA	ND(<0.02)	ND(<0.02)	ND(<0.02)	ND(<0.02)	ND(<0.02)	ND(<0.02)	ND(<0.02)	ND(<0.02)	ND(<0.02)	ND(<0.02)	ND(<0.02)	ND(<0.02)	ND(<0.02)	ND(<0.02)	ND(<0.02)	ND(<0.02)
Acenaphthene	3,200 ⁱ	-	NA	NA	ND(<0.02)	ND(<0.02)	ND(<0.02)	ND(<0.02)	ND(<0.02)	ND(<0.02)	ND(<0.02)	ND(<0.02)	ND(<0.02)	ND(<0.02)	ND(<0.02)	ND(<0.02)	ND(<0.02)	ND(<0.02)	ND(<0.02)	ND(<0.02)
Fluorene	24,000 ^j	-	NA	NA	ND(<0.02)	ND(<0.02)	0.24	0.24	ND(<0.02)	ND(<0.02)	ND(<0.02)	ND(<0.02)	ND(<0.02)	ND(<0.02)	ND(<0.02)	ND(<0.02)	ND(<0.02)	ND(<0.02)	ND(<0.02)	ND(<0.02)
Phenanthrene	3,200 ^j	-	NA	NA	ND(<0.02)	ND(<0.02)	0.044	0.044	ND(<0.02)	ND(<0.02)	ND(<0.02)	ND(<0.02)	ND(<0.02)	ND(<0.02)	ND(<0.02)	ND(<0.02)	ND(<0.02)	ND(<0.02)	ND(<0.02)	ND(<0.02)
Anthracene	2,400 ^k	-	NA	NA	ND(<0.02)	ND(<0.02)	0.072	0.072	ND(<0.02)	ND(<0.02)	ND(<0.02)	ND(<0.02)	ND(<0.02)	ND(<0.02)	ND(<0.02)	ND(<0.02)	ND(<0.02)	ND(<0.02)	ND(<0.02)	ND(<0.02)
Fluoranthene	1,37 ^l	-	NA	NA	ND(<0.02)	ND(<0.02)	0.121	0.121	ND(<0.02)	ND(<0.02)	ND(<0.02)	ND(<0.02)	ND(<0.02)	ND(<0.02)	ND(<0.02)	ND(<0.02)	ND(<0.02)	ND(<0.02)	ND(<0.02)	ND(<0.02)
Pyrene	1,37 ^l	-	NA	NA	ND(<0.02)	ND(<0.02)	0.095	0.095	ND(<0.02)	ND(<0.02)	ND(<0.02)	ND(<0.02)	ND(<0.02)	ND(<0.02)	ND(<0.02)	ND(<0.02)	ND(<0.02)	ND(<0.02)	ND(<0.02)	ND(<0.02)
Benzo[a]anthracene	137 ^l	-	NA	NA	ND(<0.02)	ND(<0.02)	0.16	0.16	ND(<0.02)	ND(<0.02)	ND(<0.02)	ND(<0.02)	ND(<0.02)	ND(<0.02)	ND(<0.02)	ND(<0.02)	ND(<0.02)	ND(<0.02)	ND(<0.02)	ND(<0.02)
Benzo[b]fluoranthene	137 ^l	-	NA	NA	ND(<0.02)	ND(<0.02)	0.17	0.17	ND(<0.02)	ND(<0.02)	ND(<0.02)	ND(<0.02)	ND(<0.02)	ND(<0.02)	ND(<0.02)	ND(<0.02)	ND(<0.02)	ND(<0.02)	ND(<0.02)	ND(<0.02)
Benzo[k]fluoranthene	0.1	12	NA	NA	ND(<0.02)	ND(<0.02)	0.061	0.061	ND(<0.02)	ND(<0.02)	ND(<0.02)	ND(<0.02)	ND(<0.02)	ND(<0.02)	ND(<0.02)	ND(<0.02)	ND(<0.02)	ND(<0.02)	ND(<0.02)	ND(<0.02)
Indeno[1,2,3-cd]pyrene	0.137 ^l	-	NA	NA	ND(<0.02)	ND(<0.02)	0.045	0.045	ND(<0.02)	ND(<0.02)	ND(<0.02)	ND(<0.02)	ND(<0.02)	ND(<0.02)	ND(<0.02)	ND(<0.02)	ND(<0.02)	ND(<0.02)	ND(<0.02)	ND(<0.02)
Dibenz[a,h]anthracene	1.37 ^l	-	NA	NA	ND(<0.02)	ND(<0.02)	0.06	0.06	ND(<0.02)	ND(<0.02)	ND(<0.02)	ND(<0.02)	ND(<0.02)	ND(<0.02)	ND(<0.02)	ND(<0.02)	ND(<0.02)	ND(<0.02)	ND(<0.02)	ND(<0.02)
Benzo[ghi]perylene	1.37 ^l	-	NA	NA	ND(<0.02)	ND(<0.02)	0.096	0.096	ND(<0.02)	ND(<0.02)	ND(<0.02)	ND(<0.02)	ND(<0.02)	ND(<0.02)	ND(<0.02)	ND(<0.02)	ND(<0.02)	ND(<0.02)	ND(<0.02)	ND(<0.02)
Total cPAH Equivalent (TEQ)	0.1	-	NA	NA	0.590	ND(<0.02)	0.096	ND(<0.02)	0.036	ND(<0.02)	0.015	ND(<0.02)	0.015	ND(<0.02)	0.037	0.038	0.111	ND(<0.02)	ND(<0.02)	ND(<0.02)

a. Cleanup level dependent on PFEX concentration
b. Indicates sum of naphthalene, 1-methylnaphthalene, and 2-methylnaphthalene
c. Indicates cleanup level is dependent on Chromium(VI) concentration
d. Indicates Method B direct count cleanup level
e. Indicates sample was not analyzed for the constituent
f. Indicates that the concentration in the sample exceeds the MTC Method A or Method B target cleanup levels
g. Cleanup level dependent on PFEX concentration
h. Indicates sum of naphthalene, 1-methylnaphthalene, and 2-methylnaphthalene
i. Indicates cleanup level is dependent on Chromium(VI) concentration
j. Indicates Method B direct count cleanup level
k. Indicates sample was not analyzed for the constituent
l. Indicates that the concentration in the sample exceeds the MTC Method A or Method B target cleanup levels

Table 2. Upland Soil Sample Results

Sample ID	Date	MTCA Method A	Cleanup Level (for Method B as noted)	Ecology Indicator Soil Concentrations	White (Table 749-3)	BLWA-8-2R	BLWA-8-5R	BLWA-9-2R	BLWA-9-5R	MV-1-2R	MV-1-2-6in	MV-1-12R	MV-1-15R	MV-2-6in	MV-2-7R	PA-1-2R	PA-2-6in	PA-3-25R	UST-1-5R	UST-2-3R	SRWA-1-3-6in	SRWA-2-3-6in
<p>TPH (mg/kg)</p> <p>NWPH-Dx Volatile Range 100/90^a 5,000</p> <p>NWPH-Dx Diesel Range 2,000 6,000</p> <p>NWPH-Dx Oil Range 2,000 6,000</p> <p>EPA-8021 Benzene 0.03</p> <p>EPA-8021 Toluene 7 200</p> <p>EPA-8021 Ethylbenzene 6 -</p> <p>EPA-8021 Xylenes 9 -</p> <p>Metals (EPA-8002/7471) (mg/kg)</p> <p>Arsenic 20.0 132</p> <p>Cadmium 2.0 14</p> <p>Chromium 19/2000^b 67 19 23</p> <p>Copper 3,200^c 217 1100 170</p> <p>Lead 250.0 118 470 200</p> <p>Mercury 2.0 5.5 0.18 0.12</p> <p>Zinc 24,000^d 350 350 110</p>																						
<p>PCBs (EPA-8082) (mg/kg)</p> <p>Total PCBs 1.0 0.65</p>																						
<p>Dioxins and Furans (EPA-1612B) (pg/kg)</p> <p>Chlorinated dibenzo-p-dioxins TEQ 0.0128^e 0.022</p>																						
<p>Semi-Volatile Organic Compounds (SVOC) (EPA-8270 SIM)</p> <p>Naphthalene 5^b - ND(<0.02)</p> <p>2-Methylnaphthalene 5^b - ND(<0.02)</p> <p>1-Methylnaphthalene 5^b - ND(<0.02)</p> <p>Acenaphthylene 4,800^d - ND(<0.02)</p> <p>Fluorene 3,200^d - ND(<0.02)</p> <p>Phenanthrene - 0.07 0.029</p> <p>Anthracene 24,000^d - ND(<0.02)</p> <p>Fluoranthene 3,200^d - 0.13 0.073</p> <p>Pyrene 2,400^d - 0.12 0.052</p> <p>Benzo[<i>a</i>]Anthracene 1,37^d - 0.081 0.032</p> <p>Chrysene 1,37^d - 0.13 0.032</p> <p>Benzo[<i>b</i>]Fluoranthene 1,37^d - 0.18 0.055</p> <p>Benzo[<i>k</i>]Fluoranthene 13,7^d - ND(<0.02)</p> <p>Benzo[<i>a</i>]Pyrene 0.1 12 0.083 0.029</p> <p>Indeno[1,2,3-<i>cd</i>]Pyrene 1,37^d - 0.078 0.028</p> <p>Benzo[<i>a,h</i>]Anthracene 0.137^d - 0.028 ND(<0.02)</p> <p>Benzo[<i>c,h</i>]Perylene 1,37^d - 0.093 0.035</p> <p>Total PAH Equivalents (TEQ) 0.1 - 0.122 0.043</p>																						

^a - Cleanup level dependent on BTEX concentrations

^b - indicates sum of naphthalene, 1-methylnaphthalene, and 2-methylnaphthalene

^c - indicates cleanup level is dependent on Chlormium(VI) concentrations

^d - indicates Method B direct conduct cleanup level

^e - indicates sample was not analyzed for the constituent

ND - indicates that the concentration in the sample exceeds the MTCA 1

Table 2. Upland Soil Sample Results

Sample ID	1/24/2018	8/1/2018	8/1/2018	8/1/2018	8/1/2018	8/1/2018	8/1/2018	8/1/2018	8/1/2018	8/1/2018	8/1/2018	8/1/2018
Concentration	SRWA-3-0.6in	SRWA-4.6in	SRWA-4.3.5ft	SRWA-4.2.6in	SRWA-3.3.5 ft	SRWA-5.5ft	SRWA-6.2.6in	SRWA-6.3ft	SRWA-7.3ft	SRWA-7.2.6in	SRWA-7.3ft	SRWA-7.3.5ft
MTCA Method A												
MTCA Method B as noted												
Cleaning Level												
Ecology Indicator Soil Concentrations (Table 749.3)												
TPH (mg/kg)	84	NA	NA	NA	NA	NA	NA	NA	NA	NA	NA	NA
NWTFH-Gx Vanilic Range	3,900	ND(<25)	ND(<25)	ND(<25)	ND(<25)	ND(<25)	ND(<25)	ND(<25)	ND(<25)	ND(<25)	ND(<25)	ND(<25)
NWTFH-Dx Diesel Range	6,000	940	190	73	NA	NA	640	690	230	280	280	280
NWTFH-Ox Oil Range	2,000	940	190	73	NA	NA	640	690	230	280	280	280
EPA-8021 Benzene	0.03	ND(<0.03)	NA	NA	NA	NA	NA	NA	NA	NA	NA	NA
EPA-8021 Toluene	7	ND(<0.05)	NA	NA	NA	NA	NA	NA	NA	NA	NA	NA
EPA-8021 Ethylbenzene	6	ND(<0.05)	NA	NA	NA	NA	NA	NA	NA	NA	NA	NA
EPA-8021 Xylenes	9	ND(<0.20)	NA	NA	NA	NA	NA	NA	NA	NA	NA	NA
Metals (EPA-6020/7471) (mg/kg)												
Arsenic	20.0	132	17	7.7	4.2	5.1	15	5	4.3	13	13	5.6
Cadmium	2.0	14	ND(<0.5)	0.32	1.5	ND(<0.23)	0.64	ND(<0.21)	2.6	0.98	0.74	ND(<0.21)
Chromium	19/2000 ^a	67	21	35	24	20	35	20	25	19	29	28
Copper	3,200 ^a	217	690	43	420	16	220	11	920	63	400	82
Lead	250.0	118	90	1,800	21	3.6	1,200	11	160	110	190	25
Mercury	2.0	5.5	11	0.098	0.33	0.04	2.8	ND(<0.02)	0.23	0.1	1.3	0.16
Zinc	24,000 ^a	360	580	460	58	85	1,100	32	400	140	310	110
PCBs (EPA-8082) (mg/kg)												
Total PCBs:	1.0	0.65	NA	NA	NA	NA	NA	NA	NA	NA	NA	NA
Dioxins and Furans (EPA-1613B) (ng/kg)												
Chlorinated dibenzo-p-dioxins TEQ	0.0128 ^d	NA	NA	NA	NA	NA	NA	NA	NA	NA	NA	0.122
Semi-Volatile Organic Compounds (SVOCs) (EPA-8270 SIM)												
Naphthalene	5 ^b	ND(<0.10)	ND(<0.02)	ND(<0.02)	ND(<0.02)	ND(<0.02)	0.035	ND(<0.02)	ND(<0.02)	ND(<0.02)	ND(<0.02)	ND(<0.02)
2-Methylnaphthalene	5 ^b	1.2	ND(<0.02)	ND(<0.02)	ND(<0.02)	ND(<0.02)	0.022	ND(<0.02)	ND(<0.02)	ND(<0.02)	ND(<0.02)	ND(<0.02)
1-Methylnaphthalene	5 ^b	0.9	ND(<0.02)	ND(<0.02)	ND(<0.02)	ND(<0.02)	ND(<0.02)	ND(<0.02)	ND(<0.02)	ND(<0.02)	ND(<0.02)	ND(<0.02)
Acenaphthylene	-	ND(<0.0002)	0.16	0.087	ND(<0.02)	ND(<0.02)	0.25	ND(<0.02)	ND(<0.02)	ND(<0.02)	ND(<0.02)	ND(<0.02)
Acenaphthene	4,800 ^d	ND(<0.0002)	ND(<0.02)	ND(<0.02)	ND(<0.02)	ND(<0.02)	ND(<0.02)	ND(<0.02)	ND(<0.02)	ND(<0.02)	ND(<0.02)	ND(<0.02)
Fluorene	3,200 ^d	ND(<0.12)	0.24	0.14	0.057	1.2	0.074	0.091	0.074	0.023	0.023	0.023
Phenanthrene	-	0.62	0.24	0.14	0.057	1.2	0.074	0.091	0.074	0.023	0.023	0.023
Anthracene	24,000 ^d	ND	0.1	0.051	0.13	ND(<0.02)	0.37	ND(<0.02)	0.024	0.15	0.15	0.033
Fluoranthene	3,200 ^d	0.62	0.71	0.34	0.13	ND(<0.02)	2.2	ND(<0.02)	0.15	0.29	0.15	0.033
Pyrene	2,400 ^d	0.57	0.73	0.33	0.12	ND(<0.02)	1.9	ND(<0.02)	0.16	0.29	0.16	0.033
Benzo[A]Anthracene	1.37 ^d	0.31	0.54	0.18	0.065	ND(<0.02)	1.2	ND(<0.02)	0.17	0.075	0.17	0.033
Chrysene	137 ^d	0.34	0.5	0.19	0.065	ND(<0.02)	1.3	ND(<0.02)	0.18	0.11	0.11	0.033
Benzo[B]Fluoranthene	137 ^d	0.43	0.59	0.24	0.065	ND(<0.02)	1.3	ND(<0.02)	0.23	0.15	0.15	0.033
Benzo[K]Fluoranthene	13.7 ^d	ND(<0.0002)	ND(<0.02)	ND(<0.02)	ND(<0.02)	ND(<0.02)	ND(<0.02)	ND(<0.02)	ND(<0.02)	ND(<0.02)	ND(<0.02)	ND(<0.02)
Benzo[A]Pyrene	0.1	0.22	0.5	0.17	0.06	ND(<0.02)	1.1	ND(<0.02)	0.085	0.16	0.081	ND(<0.02)
Indeno[1,2,3-cd]Pyrene	-	0.15	0.32	0.12	0.042	ND(<0.02)	0.62	ND(<0.02)	0.079	0.11	0.071	ND(<0.02)
Dibenz[A,H]Anthracene	0.137 ^d	ND(<0.0002)	0.098	0.083	ND(<0.02)	ND(<0.02)	0.2	ND(<0.02)	ND(<0.02)	ND(<0.02)	ND(<0.02)	ND(<0.02)
Benzo[G,H,I]perylene	1.37 ^d	0.17	0.41	0.15	0.05	ND(<0.02)	0.68	ND(<0.02)	0.13	0.15	0.1	0.022
Total PAH Equivalents (TEQ)	0.1	0.304	0.661	0.230	0.074	ND(<0.02)	1.446	ND(<0.02)	0.077	0.215	0.114	0.018

^a - Cleanup level dependent on BTEX concentrations
^b - indicates sum of naphthalene, 1-methylnaphthalene, and 2-methylnaphthalene
^c - indicates cleanup level is dependent on Chromium(VI) concentrations
^d - Indefinite Method B direct contact cleanup level
 ND - Indefinite analysis was not detected at level above reporting limit (blank)
 NA - Indefinite sample was not analyzed for the constituent
 BOLD - indicates that the concentration in the sample exceeds the MTCAL

Table 3. Stormwater Pond Sediment Analytical Results

Sample ID	MTCA Method A Cleanup Level:	Dangerous Waste Toxicity Criteria	Stormwater Pond	Storm Sed.-1
Date			1/24/2018	7/30/2018
Metals (EPA-6020/7471) (mg/kg)				
Arsenic	20.0	NL	10	NA
Cadmium	2.0	NL	10	NA
Chromium	19/2000 ^a	NL	43	NA
Copper	3,200 ^b	NL	12,000	NA
Lead	250.0	NL	450	NA
Mercury	2.0	NL	0.15	NA
Zinc	24,000 ^b	NL	2,400	NA
TCLP Metals (EPA-1311) (mg/L)				
Arsenic	NL	5	NA	ND (<0.025)
Barium	NL	100	NA	1.1
Cadmium	NL	1	NA	ND (<0.025)
Chromium	NL	5	NA	ND (<0.025)
Lead	NL	5	NA	0.36
Mercury	NL	0.2	NA	ND (<0.0002)
Selenium	NL	1.0	NA	ND (<0.025)
Silver	NL	5	NA	ND (<0.025)
DW Bioassay (Ecology 80-12)	NL	NL	NA	Not Dangerous

^a - indicates cleanup level is dependant on Chromium(VI) concentrations.

^b - indicates Method B direct contact cleanup level

ND - indicates analyte was not detected at level above reporting limit (shown in parentheses)

NA - indicates sample was not analyzed for the constituent

NL - indicates there is no target cleanup level

BOLD - indicates that the concentration in the sample exceeds the MTCA Method A or Method B target cleanup levels

Table 4. Groundwater Monitoring Well Sample Analytical Results

Sample ID	MTCA Method A	Cleanup Level:	8/28/2018	8/28/2018	8/28/2018	8/28/2018	8/29/2018	8/29/2018	8/29/2018	Equipment
Date			MW-1	MW-2	MW-3	MW-3 duplicate	MW-4	MW-5	MW-6	
TPH (ug/L)										
NWTPH-Cx Gasoline Range	1,000/800 ^a		ND(<50)	200	ND(<50)	ND(<50)	ND(<50)	ND(<50)	ND(<50)	ND(<50)
NWTPH-Dx Diesel Range	500		180	210	ND(<130)	ND(<130)	ND(<130)	ND(<130)	ND(<130)	ND(<130)
NWTPH-Dx Oil Range	500		ND(<250)	ND(<250)	ND(<250)	ND(<250)	ND(<250)	ND(<250)	ND(<250)	ND(<250)
EPA-8021 Benzene	5		ND(<1)	ND(<1)	ND(<1)	ND(<1)	ND(<1)	ND(<1)	ND(<1)	ND(<1)
EPA-8021 Toluene	1,000		ND(<1)	ND(<1)	ND(<1)	ND(<1)	ND(<1)	ND(<1)	ND(<1)	ND(<1)
EPA-8021 Ethylbenzene	700		ND(<1)	ND(<1)	ND(<1)	ND(<1)	ND(<1)	ND(<1)	ND(<1)	ND(<1)
EPA-8021 Xylenes	1,000		ND(<3)	ND(<3)	ND(<3)	ND(<3)	ND(<3)	ND(<3)	ND(<3)	ND(<3)
Dissolved Metals (EPA-200.8/245.1) (ug/L)										
Mercury (Dissolved)	2		ND(<0.2)	ND(<0.2)	ND(<0.2)	ND(<0.2)	ND(<0.2)	ND(<0.2)	ND(<0.2)	ND(<0.2)
Arsenic (Dissolved)	5		12	ND(<1)	2.3	2.3	1.1	1.2	ND(<1)	ND(<1)
Cadmium (Dissolved)	5		ND(<1)	ND(<1)	ND(<1)	ND(<1)	ND(<1)	ND(<1)	ND(<1)	ND(<1)
Chromium (Dissolved)	50		ND(<2)	ND(<2)	4.9	5.0	ND(<2)	ND(<2)	ND(<2)	ND(<2)
Copper (Dissolved)	NA		8.0	ND(<2)	3.2	3.2	3.2	ND(<2)	ND(<2)	ND(<2)
Lead (Dissolved)	15		ND(<1)	ND(<1)	ND(<1)	ND(<1)	ND(<1)	ND(<1)	ND(<1)	ND(<1)
Zinc (Dissolved)	NA		3.2	ND(<2.5)	9.8	8.6	3.0	ND(<2.5)	ND(<2.5)	ND(<2.5)
Semi-Volatile Organic Compounds (SVOCs) (EPA-8270 SIM) (ug/L)										
Naphthalenes ^b	160		ND(<0.02)	ND(<0.02)	ND(<0.02)	ND(<0.02)	ND(<0.02)	ND(<0.02)	ND(<0.02)	ND(<0.02)
Benzo[a]pyrene	1		ND(<0.02)	ND(<0.02)	ND(<0.02)	ND(<0.02)	ND(<0.02)	ND(<0.02)	ND(<0.02)	ND(<0.02)
Benzo[a]anthracene	0.1		ND(<0.02)	ND(<0.02)	ND(<0.02)	ND(<0.02)	ND(<0.02)	ND(<0.02)	ND(<0.02)	ND(<0.02)
Benzo[b]fluoranthene	0.1		ND(<0.02)	ND(<0.02)	ND(<0.02)	ND(<0.02)	ND(<0.02)	ND(<0.02)	ND(<0.02)	ND(<0.02)
Benzo[k]fluoranthene	0.1		ND(<0.02)	ND(<0.02)	ND(<0.02)	ND(<0.02)	ND(<0.02)	ND(<0.02)	ND(<0.02)	ND(<0.02)
Chrysene	0.01		ND(<0.02)	ND(<0.02)	ND(<0.02)	ND(<0.02)	ND(<0.02)	ND(<0.02)	ND(<0.02)	ND(<0.02)
Dibenz[a,h]anthracene	0.1		ND(<0.02)	ND(<0.02)	ND(<0.02)	ND(<0.02)	ND(<0.02)	ND(<0.02)	ND(<0.02)	ND(<0.02)
Indeno[1,2,3-cd]pyrene	0.1		ND(<0.02)	ND(<0.02)	ND(<0.02)	ND(<0.02)	ND(<0.02)	ND(<0.02)	ND(<0.02)	ND(<0.02)
cPAH Equivalent (TEQ) ^c	0.1 ^d		0.015	0.015	0.015	0.015	0.015	0.015	0.015	0.015

^a - Cleanup level dependent on BTEX concentrations

^b - Sum of naphthalene, 1-methyl naphthalene, and 2-methylnaphthalene

^c - cPAH level calculated using Toxicity equivalency methodology provided in WAC 173-340-708(8)

^d - Method A cleanup level of Benzo(a)pyrene

ND - indicates analyte was not detected at level above reporting limit (shown in parentheses)

NA - indicates that there is no MTCA Method A target cleanup level

BOLD - indicates that the concentration in the sample exceeds the MTCA Method A target cleanup levels

TEQ - Toxicity Equivalency to benzo(a)pyrene, calculated by multiplying result by appropriate TEF.

Table 5. Groundwater Chemistry Parameters

Well ID	Date	DTW ^a (ft)	GW Elevation (ft)	Temp (°C)	EC (mS/cm)	TDS	Salinity	DO (mg/L)	pH	ORP (mV)	Turbidity ^b NTU
MW-1	8/28/2018	8.23	5.17	16.27	0.364	0.237	0.18	0.26	7.76	-58.4	7.8
MW-2	8/28/2018	5.99	4.85	18.26	5.854	3.808	3.20	0.20	8.02	-57.1	2.9
MW-3	8/28/2018	4.57	5.12	15.39	4.839	3.145	2.61	0.24	8.29	-14.9	2.8
MW-4	8/28/2018	8.09	4.81	15.60	0.351	0.228	0.17	0.28	7.99	-8.2	4.7
MW-5	8/29/2018	10.81	5.08	12.96	0.513	0.333	0.25	0.82	7.42	-55.1	48.0
MW-6	8/29/2018	28.62	5.07	NA	NA	NA	NA	NA	NA	NA	381

^a - Depth to water readings presented here were all collected on the same day for comparison purposes.

^b - Turbidity readings collected with HACH portable turbidity meter. Reading shown at time of sample collection.

Important Information

About Your Environmental Site Assessment/Evaluation Report

IMPORTANT INFORMATION

ENVIRONMENTAL SITE ASSESSMENTS/EVALUATIONS ARE PERFORMED FOR SPECIFIC PURPOSES AND FOR SPECIFIC CLIENTS.

This report was prepared to meet the needs you specified with respect to your specific site and your risk management preferences. Unless indicated otherwise, we prepared your report expressly for you and for the purposes you indicated. No one other than you should use this report for any purpose without first conferring with us. No one is authorized to use this report for any purpose other than that originally contemplated without our prior written consent.

The findings and conclusions documented in this site assessment/evaluation have been prepared for specific application to this project and have been developed in a manner consistent with that level of care and skill normally exercised by members of the environmental science profession currently practicing under similar conditions in this area. The conclusions presented are based on interpretation of information currently available to us and are made within the operational scope, budget, and schedule constraints of this project. No warranty, express or implied, is made.

OUR REPORT IS BASED ON PROJECT-SPECIFIC FACTORS.

Our environmental site assessment is based on several factors and may include (but not be limited to) reviewing public documents to chronicle site ownership for the past 30, 40, or more years; investigating the site's regulatory history to learn about permits granted or citations issued; determining prior uses of the site and those adjacent to it; reviewing available topographic and real estate maps, historical aerial photos, geologic information, and hydrologic data; reviewing readily available published information about surface and subsurface conditions; reviewing federal and state lists of known and potentially contaminated sites; evaluating the potential for naturally occurring hazards; and interviewing public officials, owners/operators, and/or adjacent owners with respect to local concerns and environmental conditions.

Except as noted within the text of the report, no sampling or quantitative laboratory testing was performed by us as part of this site assessment. Where such analyses were conducted by an outside laboratory, Shannon & Wilson relied upon the data provided and did not conduct an independent evaluation regarding the reliability of the data.

CONDITIONS CAN CHANGE.

Site conditions, both surface and subsurface, may be affected as a result of natural processes or human influence. An environmental site assessment/evaluation is based on conditions that existed at the time of the evaluation. Because so many aspects of a historical review rely on third-party information, most consultants will refuse to certify (warrant) that a site is free of contaminants, as it is impossible to know with absolute certainty if such a condition exists. Contaminants may be present in areas that were not surveyed or sampled or may migrate to areas that showed no signs of contamination at the time they were studied.

Unless your consultant indicates otherwise, your report should not be construed to represent geotechnical subsurface conditions at or adjacent to the site and does not provide sufficient information for construction-related activities. Your report also should not be used following floods, earthquakes, or other acts of nature; if the size or configuration of the site is altered; if the location of the site is modified; or if there is a change of ownership and/or use of the property.

INCIDENTAL DAMAGE MAY OCCUR DURING SAMPLING ACTIVITIES.

Incidental damage to a facility may occur during sampling activities. Asbestos and lead-based paint sampling often require destructive sampling of pipe insulation, floor tile, walls, doors, ceiling tile, roofing, and other building materials. Shannon & Wilson does not provide for paint repair. Limited repair of asbestos sample locations is provided. However, Shannon & Wilson neither warrants repairs made by our field personnel, nor are we held liable for injuries or damages as a result of those repairs. If you desire a specific form of repair, such as those provided by a licensed roofing contractor, you need to request the specific repair at the time of the proposal. The owner is responsible for repair methods that are not specified in the proposal.

READ RESPONSIBILITY CLAUSES CAREFULLY.

Environmental site assessments/evaluations are less exact than other design disciplines because they are based extensively on judgment and opinion and there may not have been any (or very limited) investigation of actual subsurface conditions. Wholly unwarranted claims have been lodged against consultants. To limit this exposure, consultants have developed a number of clauses for use in their contracts, reports, and other documents. These responsibility clauses are not exculpatory clauses designed to transfer the consultant's liabilities to other parties; rather, they are definitive clauses that identify where responsibilities begin and end. Their use helps all parties involved recognize their individual responsibilities and take appropriate action. Some of these definitive clauses may appear in this report, and you are encouraged to read them closely. Your consultant will be pleased to give full and frank answers to your questions.

Consultants cannot accept responsibility for problems that may develop if they are not consulted after factors considered in their reports have changed or conditions at the site have changed. Therefore, it is incumbent upon you to notify your consultant of any factors that may have changed prior to submission of the final assessment/evaluation.

An assessment/evaluation of a site helps reduce your risk but does not eliminate it. Even the most rigorous professional assessment may fail to identify all existing conditions.

ONE OF THE OBLIGATIONS OF YOUR CONSULTANT IS TO PROTECT THE SAFETY, HEALTH, PROPERTY, AND WELFARE OF THE PUBLIC.

If our environmental site assessment/evaluation discloses the existence of conditions that may endanger the safety, health, property, or welfare of the public, we may be obligated under rules of professional conduct, statutory law, or common law to notify you and others of these conditions.

The preceding paragraphs are based on information provided by the ASFE/Association of Engineering Firms Practicing in the Geosciences, Silver Spring, Maryland