

**E-MAILED**  
FEB 06 2020

February 6<sup>th</sup> 2020

WA Dept of Ecology  
Attn: Tamara Welty, LG, LHG Periodic Reviewer & Site Manager  
3190 160<sup>th</sup> Ave SE,  
Bellevue, WA. 98008-5452

Re: 4500 4<sup>th</sup> Ave S Also, Parcel's 3958900601, 3958900645 and 3958900600  
Seattle, WA. 98134

To Whom It May Concern:

Day & Nite Plumbing & Heating, Inc is proposing to REPLACE an existing water service at the above noted address and parcel #'s.

We will excavate necessary locations, (see attached drawing) by means of manual, mechanical & Hydro Vac at a depth of approximately 3ft deep dependent on whether there are any obstructions in our proposed path. All soils removed will be treated as contaminated soils and disposed of per State & Federal applicable laws. We will take necessary precautions using eye and hand protection. During this scope of work we will have caution cones and or barricades to cordon off our work site. Any open trenches that are left unattended will be properly secured. The length of this project should take about 2 weeks. We will import appropriate soils and backfill our excavation areas and compact. Final restoration will be asphalt patching to existing.

Sincerely,

*David*

*David Lalonde*

*Assistant General Manager*

*Service Manager, Plumbing*

*Licensed Journeyman Plumber - PL01*

*AHERA Building Inspector*

*State Certified Continuing Education Instructor*

*(425) 508-5033, Cell*

*(425) 775 – 6464, Office*

*'Serving You at Day & Nite for over 29yrs...'*



Since 1954

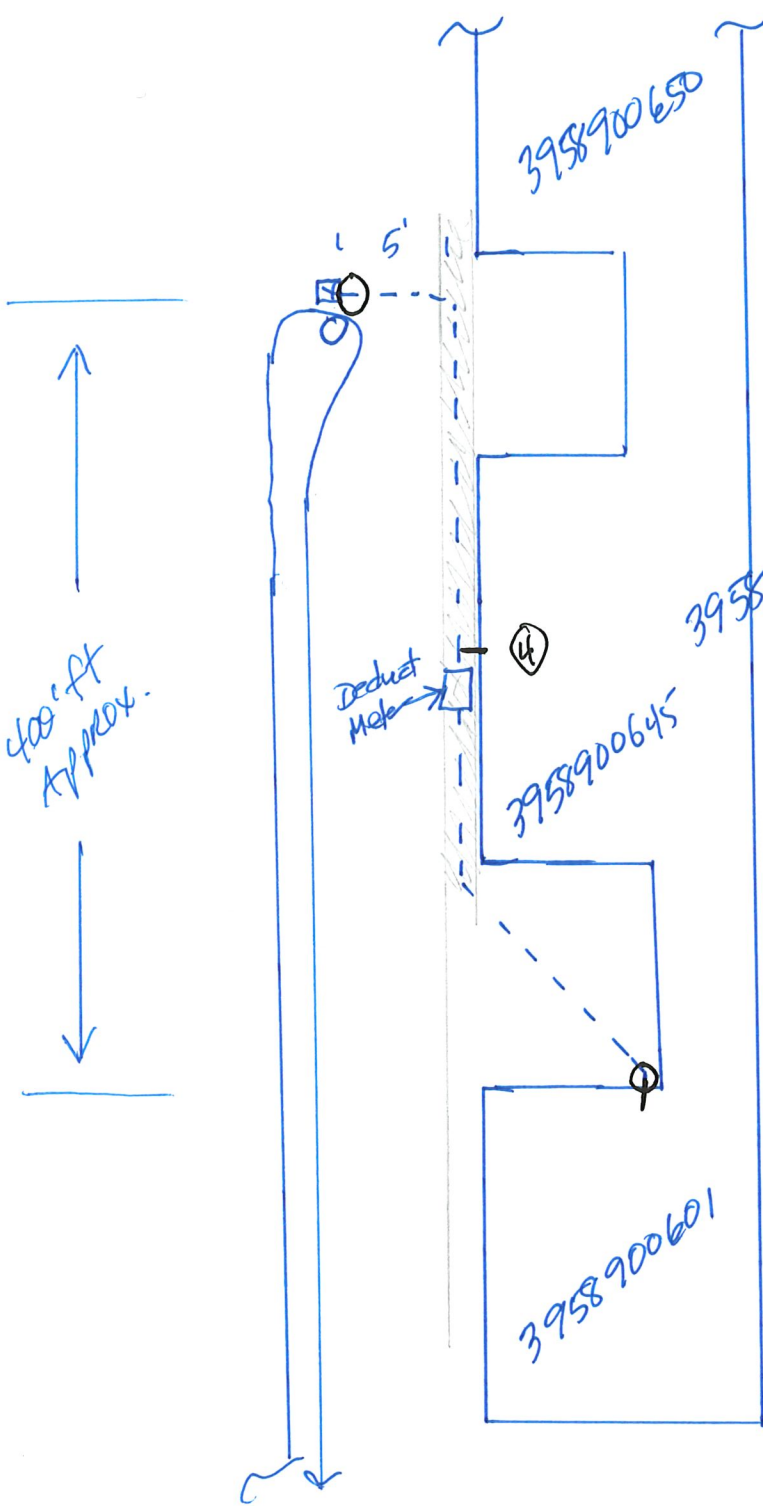


Maintaining an A+ Rating

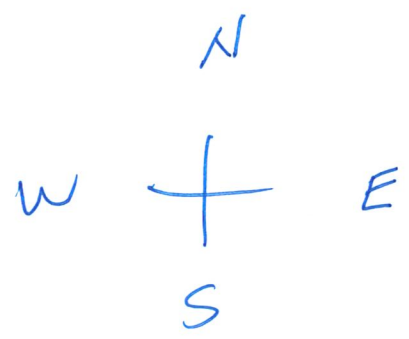
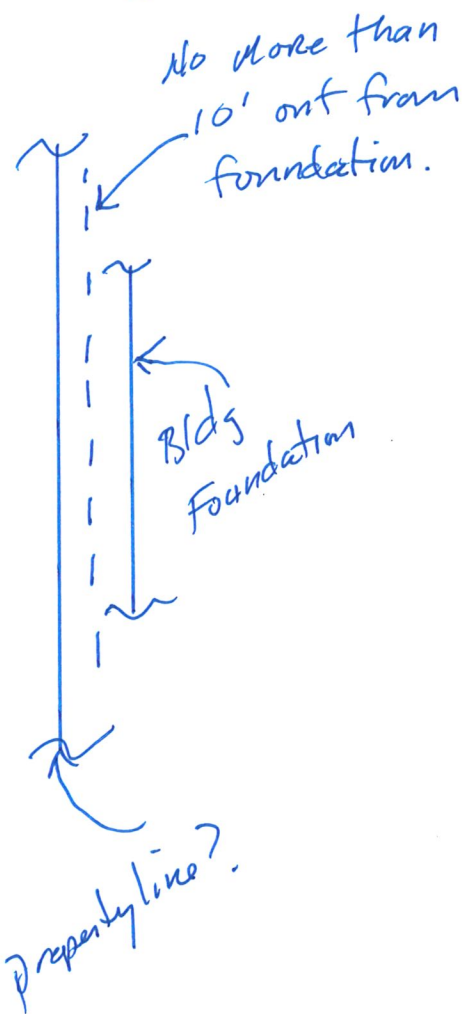


*please consider the environment before printing this e-mail*

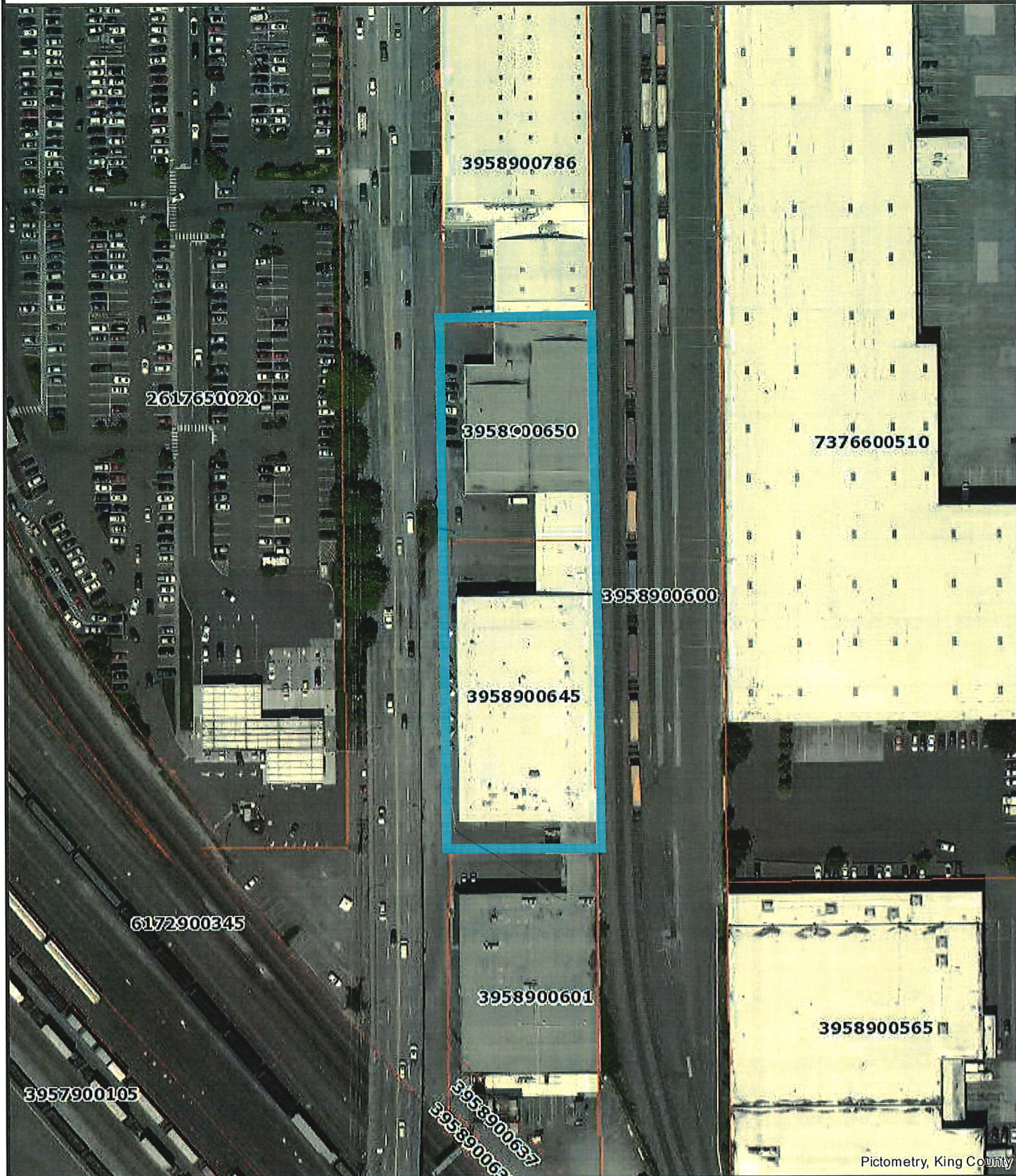
*Copying, reproducing or sharing enclosed correspondence without direct approval in writing from sender is prohibited*



20' 2" Type L  
 8 - Pack Joint  
 1 - 1 1/2 Meter  
 1 - 1/2 Embstop  
 --- waterline



# King County iMap



Pictometry, King County

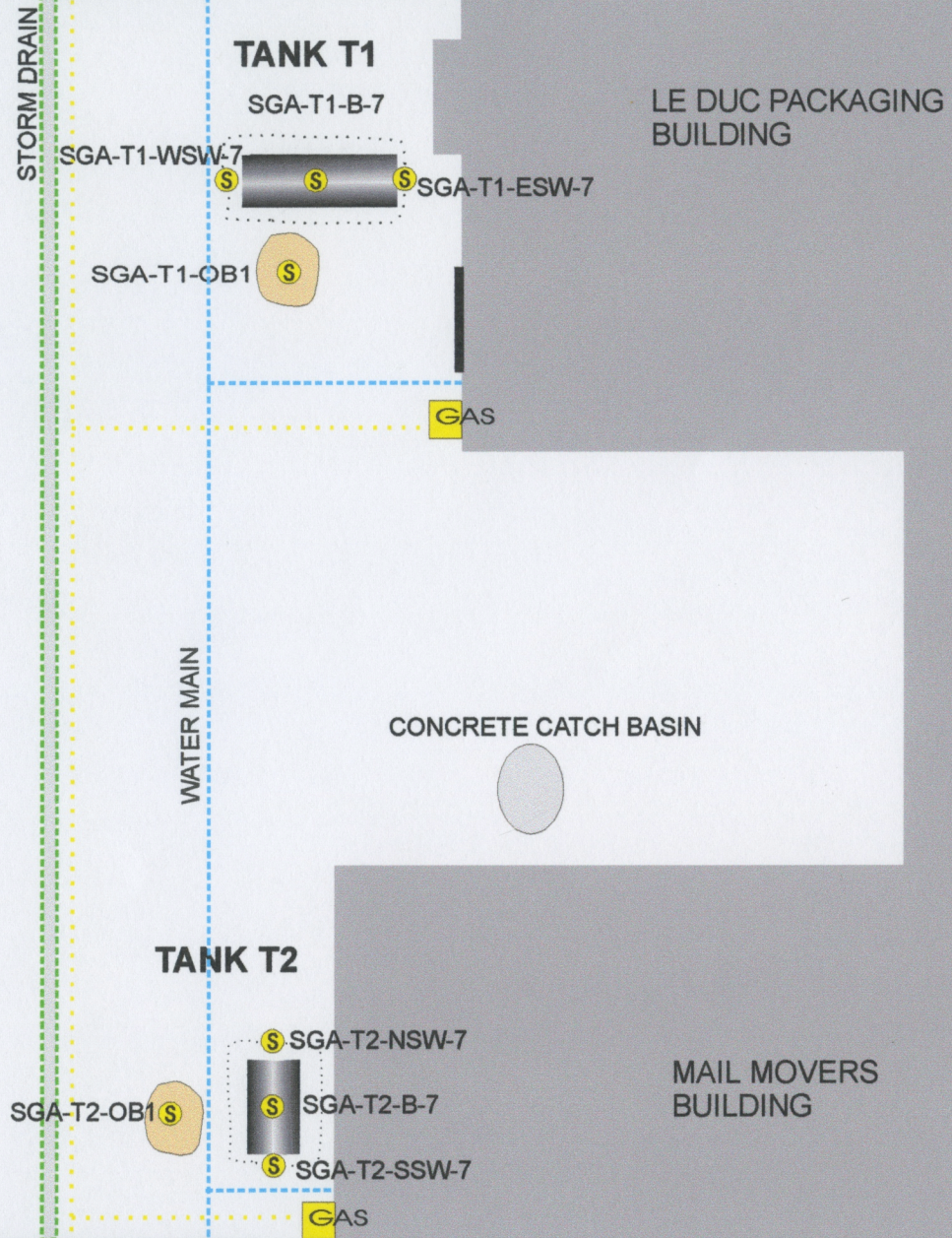
The information included on this map has been compiled by King County staff from a variety of sources and is subject to change without notice. King County makes no representations or warranties, express or implied, as to accuracy, completeness, timeliness, or rights to the use of such information. This document is not intended for use as a survey product. King County shall not be liable for any general, special, indirect, incidental, or consequential damages including, but not limited to, lost revenues or lost profits resulting from the use or misuse of the information contained on this map. Any sale of this map or information on this map is prohibited except by written permission of King County.

Date: 8/21/2019

Notes:



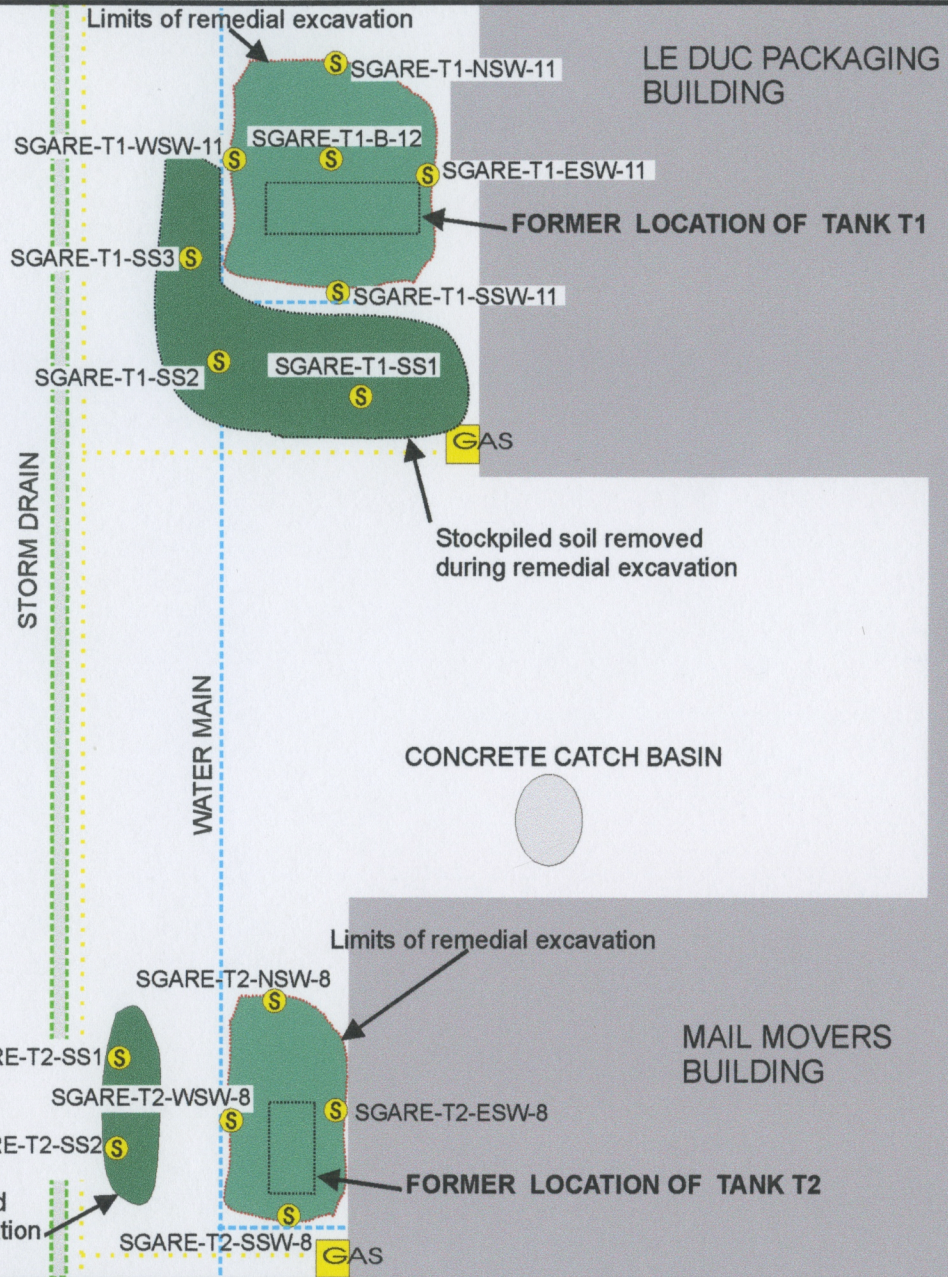
**King County**



GNEISS CONTRACTING, LLC  
SEATTLE, WASHINGTON

- KEY TO SITE SCHEMATIC**
- FORMER UNDERGROUND STORAGE TANK
  - STOCKPILED OVERBURDEN SOIL
  - SITE ASSESSMENT SOIL SAMPLES
  - APPROX. LOCATION OF UTILITIES; WATER, STORM, GAS

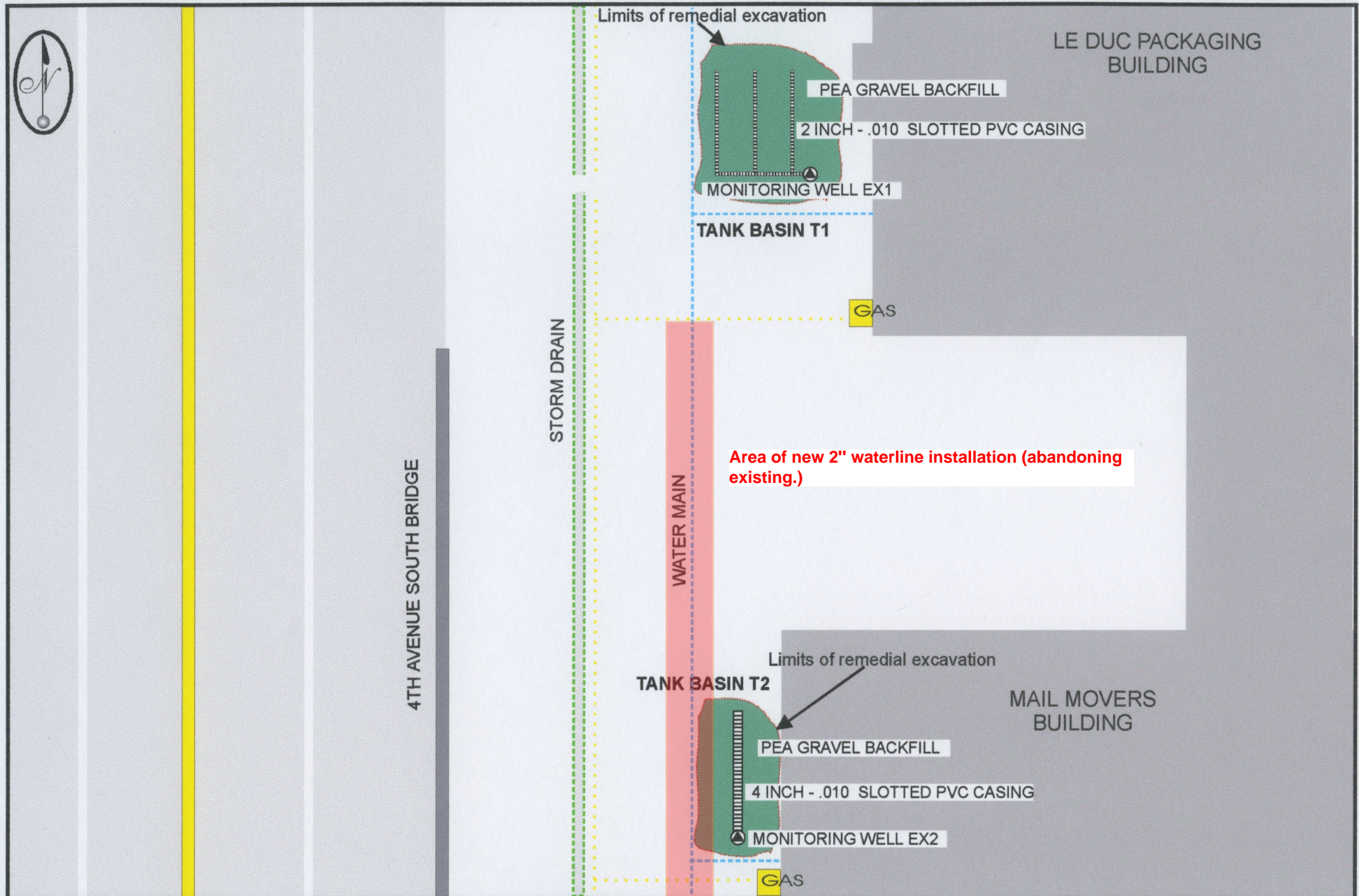
**FIGURE 2 SITE SCHEMATIC**  
**Ricchiazzi Property**  
**SEATTLE, WASHINGTON**



### KEY TO SITE SCHEMATIC

- LIMITS OF REMEDIAL EXCAVATION
- STOCKPILED PETROLEUM HYDROCARBON IMPACTED SOIL
- INDEPENDENT CLEANUP SOIL SAMPLES
- APPROX. LOCATION OF UTILITIES: WATER, STORM, GAS

**FIGURE 3 SITE SCHEMATIC**  
Independent Cleanup Sampling Sites  
Ricchiuzzi Industrial Property  
Seattle, Washington



Limits of remedial excavation

LE DUC PACKAGING BUILDING

PEA GRAVEL BACKFILL

2 INCH - .010 SLOTTED PVC CASING

MONITORING WELL EX1

TANK BASIN T1

GAS

STORM DRAIN

4TH AVENUE SOUTH BRIDGE

WATER MAIN

Area of new 2" waterline installation (abandoning existing.)

Limits of remedial excavation

MAIL MOVERS BUILDING

TANK BASIN T2

PEA GRAVEL BACKFILL

4 INCH - .010 SLOTTED PVC CASING

MONITORING WELL EX2

GAS

### KEY TO SITE SCHEMATIC

- LIMITS OF REMEDIAL EXCAVATION
- GROUNDWATER MONITORING/EXTRACTION WELL
- APPROX. LOCATION OF UTILITIES; WATER, STORM, GAS

### FIGURE 4 SITE SCHEMATIC

MONITORING WELL CONSTRUCTION  
Ricchiuzzi Industrial Property  
Seattle, Washington

GNEISS CONTRACTING, LLC  
  
SEATTLE, WASHINGTON