

Reserve Silica Corporation Site Cleanup Status Update Winter 2020

Solid Waste Management Program
Northwest Regional Office



Ecology Contacts

Site managers

Alan Noell, PhD, PE

Tim O'Connor, LHG

Public participation coordinator

Nancy Lui

Communication manager

Dave Bennett



Agenda

- Public update review
- Cleanup site distinctions
- Agreed order
- Public participation
- Ecology websites
- Questions & answers



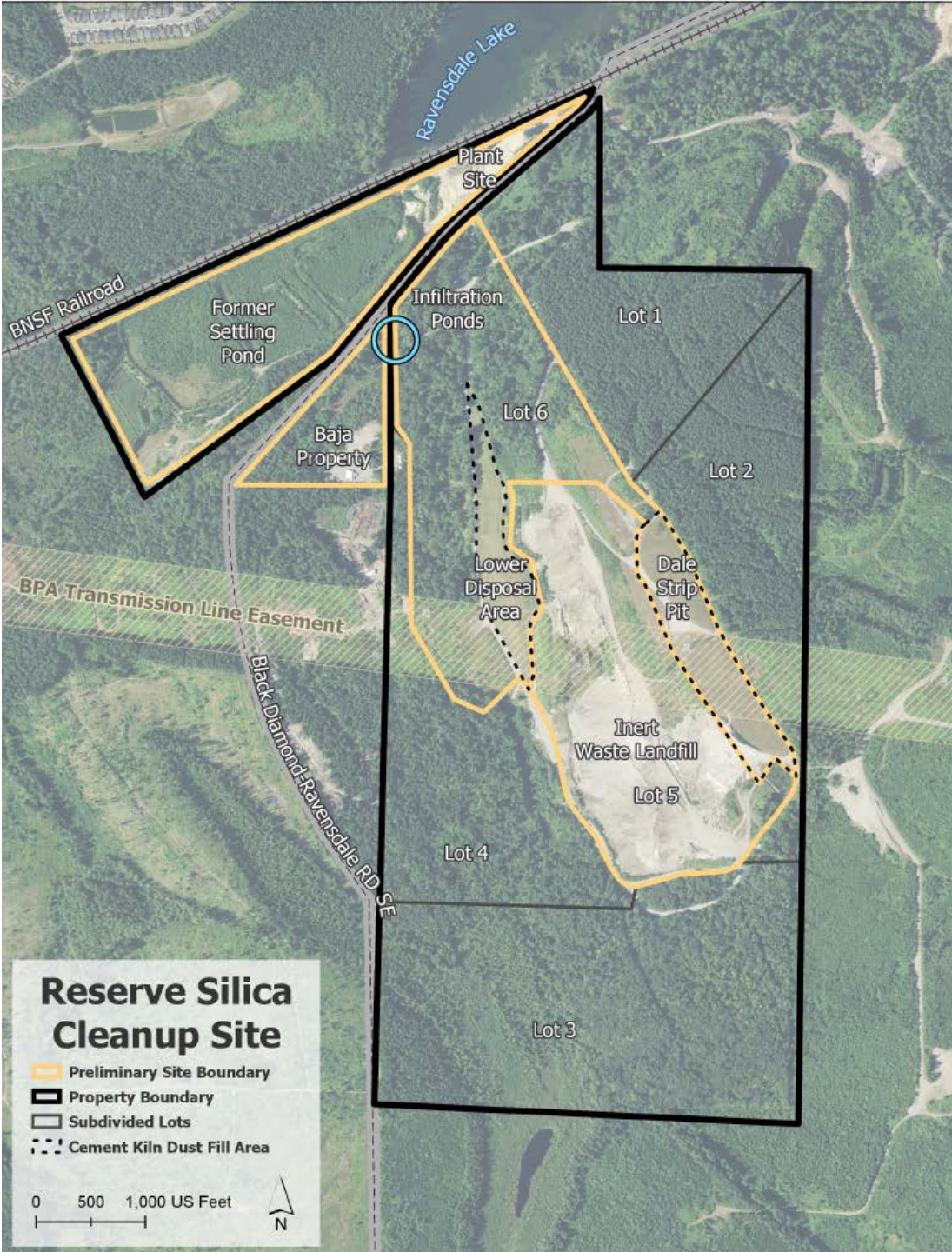
Public Update Review

- Introduced site and cleanup regulations (6/5/2017, 5/7/2018)
- Solicited comments on proposed Agreed Order and Public Participation Plan (11/16/2018)
- Status update on interim action (3/4/2019)
- New Agreed Order (2/3/2020)





Model Toxics Control Act Cleanup Site Distinctions



Historical mining activities

- Underground coal mining
- Surface coal and sand mining and reclamation
- Coal and sand processing areas

Parcel descriptions

- Reserve Silica Corporation parcel boundaries outlined in black
- Parcels impacted by contamination outlined in yellow

Preliminary site boundaries

- Reserve Silica Reclamation site
 - South of Black Diamond-Ravensdale Road
- Reserve Silica Plant site
 - North of Black Diamond-Ravensdale Road

Separate Sites under Model Toxics Control Act

- Sources and types of contamination are distinct
- Permit, interim action, and restoration time frame differences
 - Landfills require post-closure care and financial assurance until functionally stable.
- Different potentially liable persons (PLPs) and remedial investigation/feasibility studies (RI/FS's) proposed



Why Sites managed separately

Reclamation Site

- Mining works and mine reclamation
- Complex geology and hydrogeology
- Landfill permit
- Cement kiln dust, high pH leachate release
- Multiple interim actions
- Long-term post-closure care and financial assurance
- PLPs: Reserve Silica, Holcim, BNSF
- Formal cleanup process

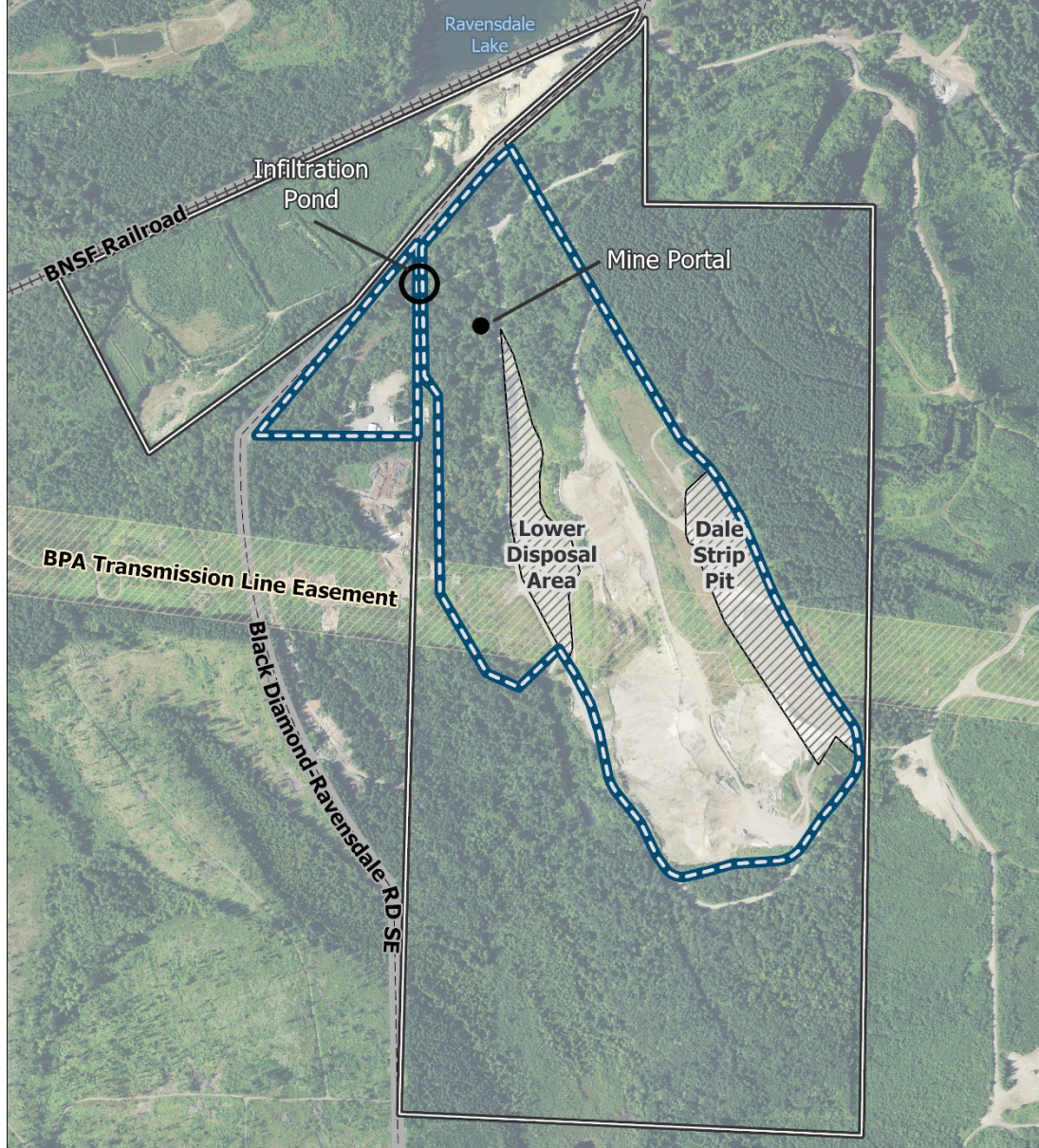
Plant Site

- Historical coal and sand processing
- Petroleum impacts
- Relatively low environmental risk
- Short-term cleanup alternatives preferred
- PLP: Reserve Silica
- Independent cleanup process


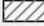


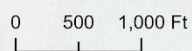
Reserve Silica
Reclamation Site
Formal Cleanup
Agreed Order





Reserve Silica Reclamation Site

-  Preliminary Site Boundary
-  Reserve Silica Property Boundary
-  Cement Kiln Dust Fill Area



Reserve Silica Reclamation Site

- Agreed Order
 - Remedial Investigation (RI) Work Plan
 - Remedial Investigation (RI)
 - Feasibility Study (FS)
 - Draft Cleanup Action Plan (DCAP)



Reserve Silica Reclamation Site

- Public Participation
 - Draft Agreed Order (11/16/2018)
 - Comments received
 - Responsiveness summary (1/29/2020)
 - RI Work Plan will be available for review
 - Comments will be considered
 - Formal review process planned for RI, FS, DCAP
 - Responsiveness summary will be issued



Reserve Silica Reclamation Site Webpage



[https://apps.ecology.wa.gov/gsp/
Sitepage.aspx?csid=4728](https://apps.ecology.wa.gov/gsp/Sitepage.aspx?csid=4728)



Reserve Silica Plant Site Independent Cleanup



Reserve Silica Plant Site

26000 Black Diamond & Ravensdale Rd Ravensdale, WA



Plant Site Detail



Reserve Silica Plant Site

- Confirmed and Suspected Contaminated Sites List
- Independent cleanup process
 - Abide by Model Toxics Control Act
 - Proceed at own pace
 - Options to consult with Ecology
 - Ecology reserves option to require formal cleanup process





Reserve Silica Plant Site Website

<https://apps.ecology.wa.gov/gsp/Sitepage.aspx?csid=15125>



Questions and Answers