

## Blakely Harbor Park: The next chapter in the history of the bay



**Comments invited through April 1, 2020**



<https://tinyurl.com/uehbqtv>



John Evered, Toxics Cleanup Program  
Washington Dept of Ecology  
PO Box 47600  
Olympia, WA 98504-7600

**Questions?**

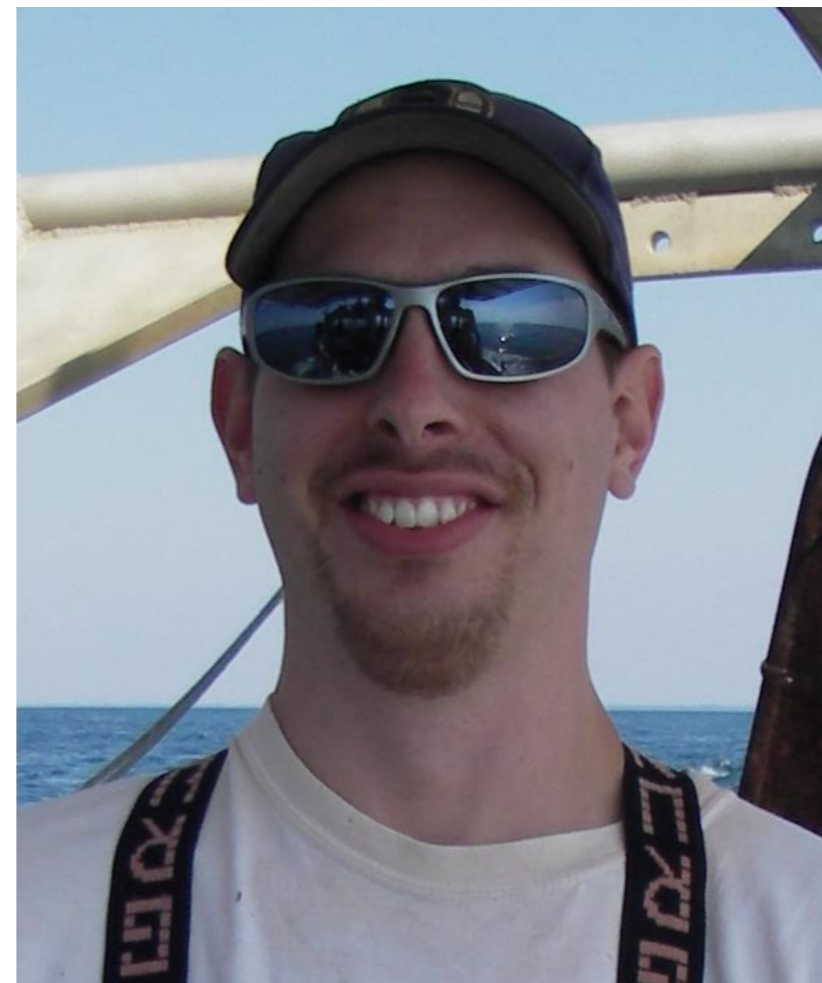
Contact site manager John Evered: [John.Evered@ecy.wa.gov](mailto:John.Evered@ecy.wa.gov), 360-407-7071



## Today's presenters



**John Evered**  
Site Manager, Ecology



**Leonard Machut**  
Aquatic Lands Supervisor, Ecology



**Megan MacClellan**  
Environmental Planner, Ecology



**Mike Warjone**  
Vice President, Port Blakely Tree Farms



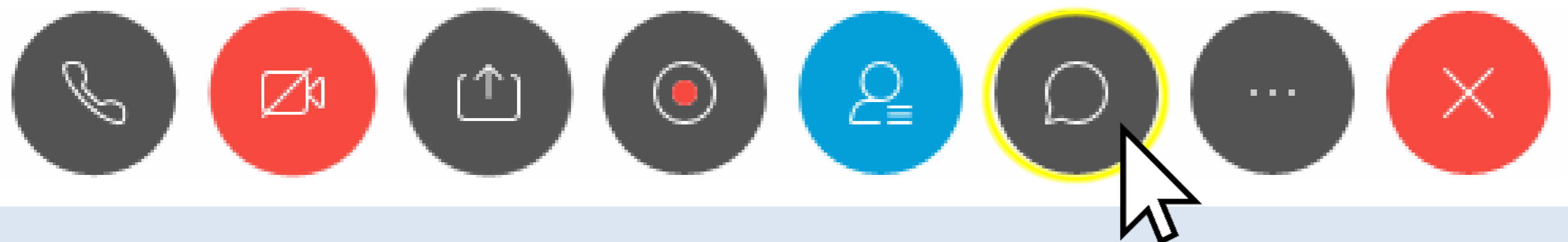
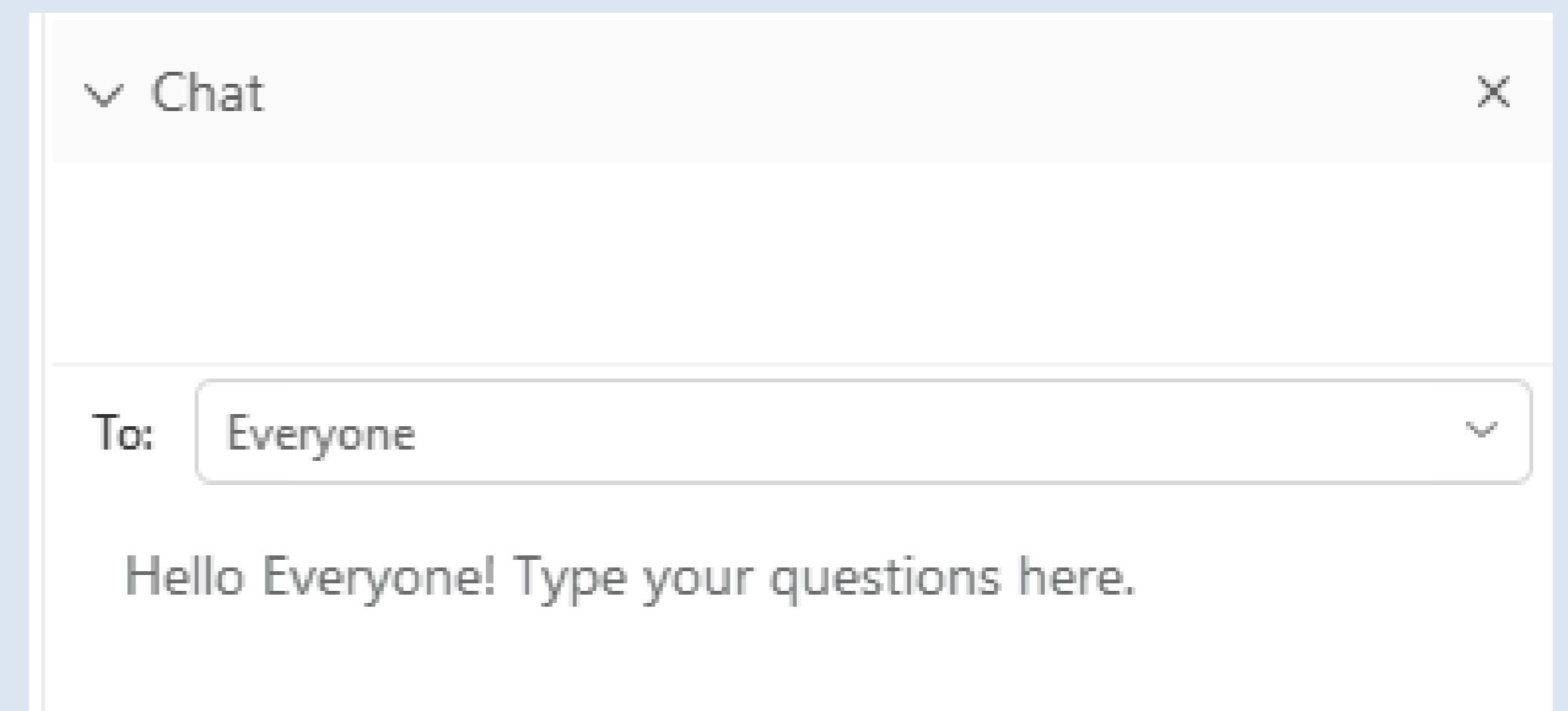
**Anne Fitzpatrick**  
Principle Scientist, Geosyntec Consultants



## Let's make this INTERACTIVE!



You can ask questions  
via the chat function



Facilitator will read your typed questions

We will either:

1. Answer your questions throughout the presentation.

--OR--

2. Collect your questions for the Q/A session at the end.

## Let's make this ACCESSIBLE!



We will record and share  
this online public meeting.

After the meeting, you can view a copy:  
<https://tinyurl.com/y336vk28>



We respect your privacy.

Everyone is welcome to stay connected to this online public meeting. Your screen name and any typed or spoken questions will be recorded.

You can log-off now before we record and view the presentation later at the link above.

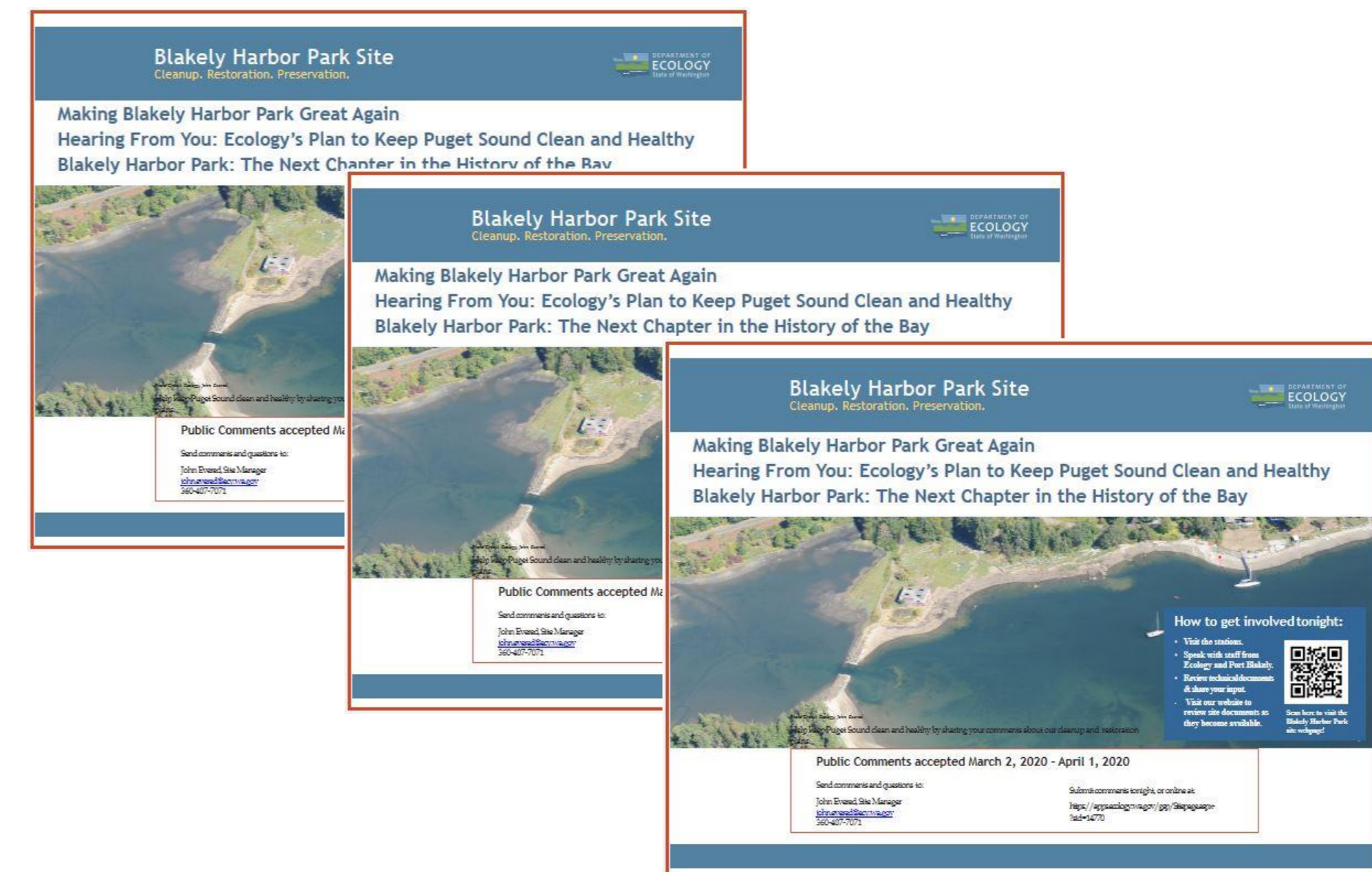
## Agenda

### Slide presentation (30 min.)

- The cleanup process
- What we know
- The next steps
- Documents for public comment
- How to stay involved

### Question and answer (30 min.)

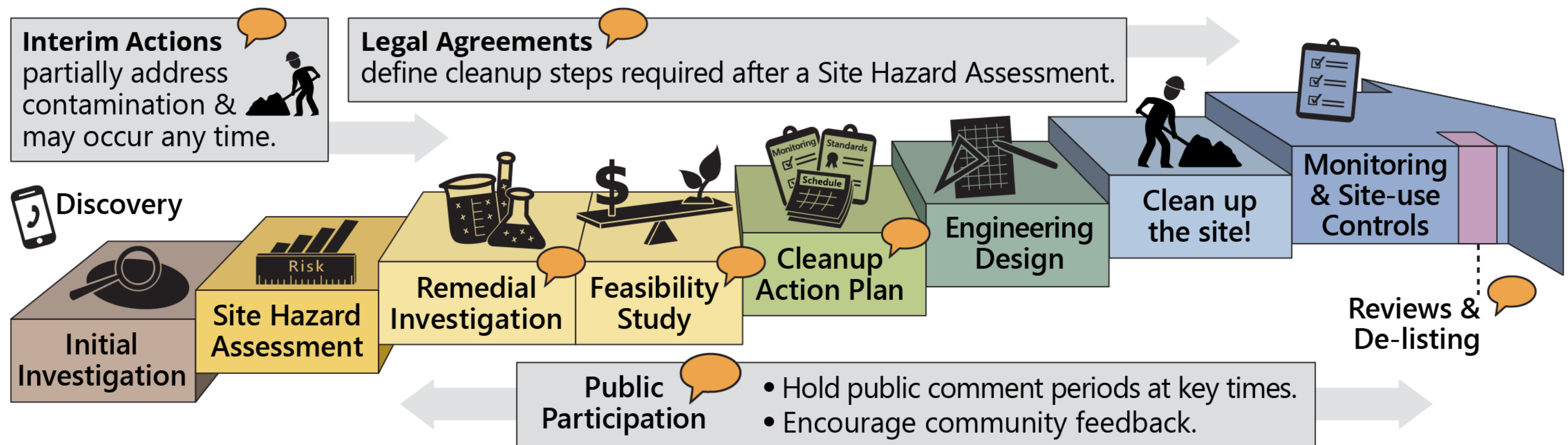
- For Ecology staff
- For Port Blakely Tree Farms
- What interests you





# The Model Toxics Control Act

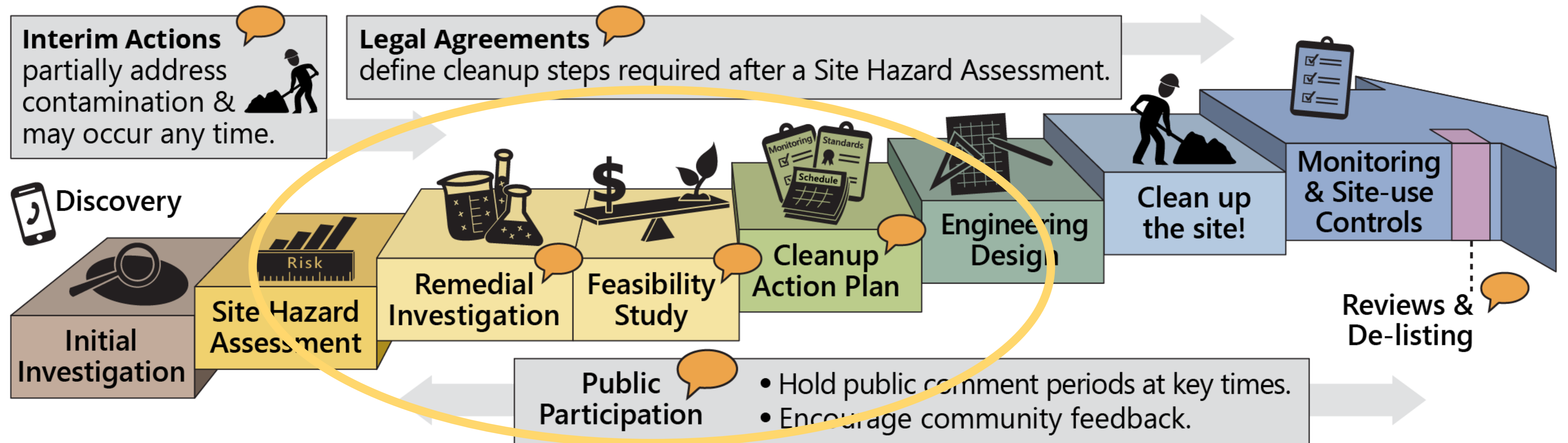
## Washington's formal cleanup process



## Goals

- A linear process to maximize active cleanup as promptly as possible while minimizing cleanup impacts.
- Address threats to human health and the environment posed by contamination.

## Washington's formal cleanup process



**We are here.**

Working with Port Blakely Tree Farms to investigate legacy contamination and find potential cleanup options.



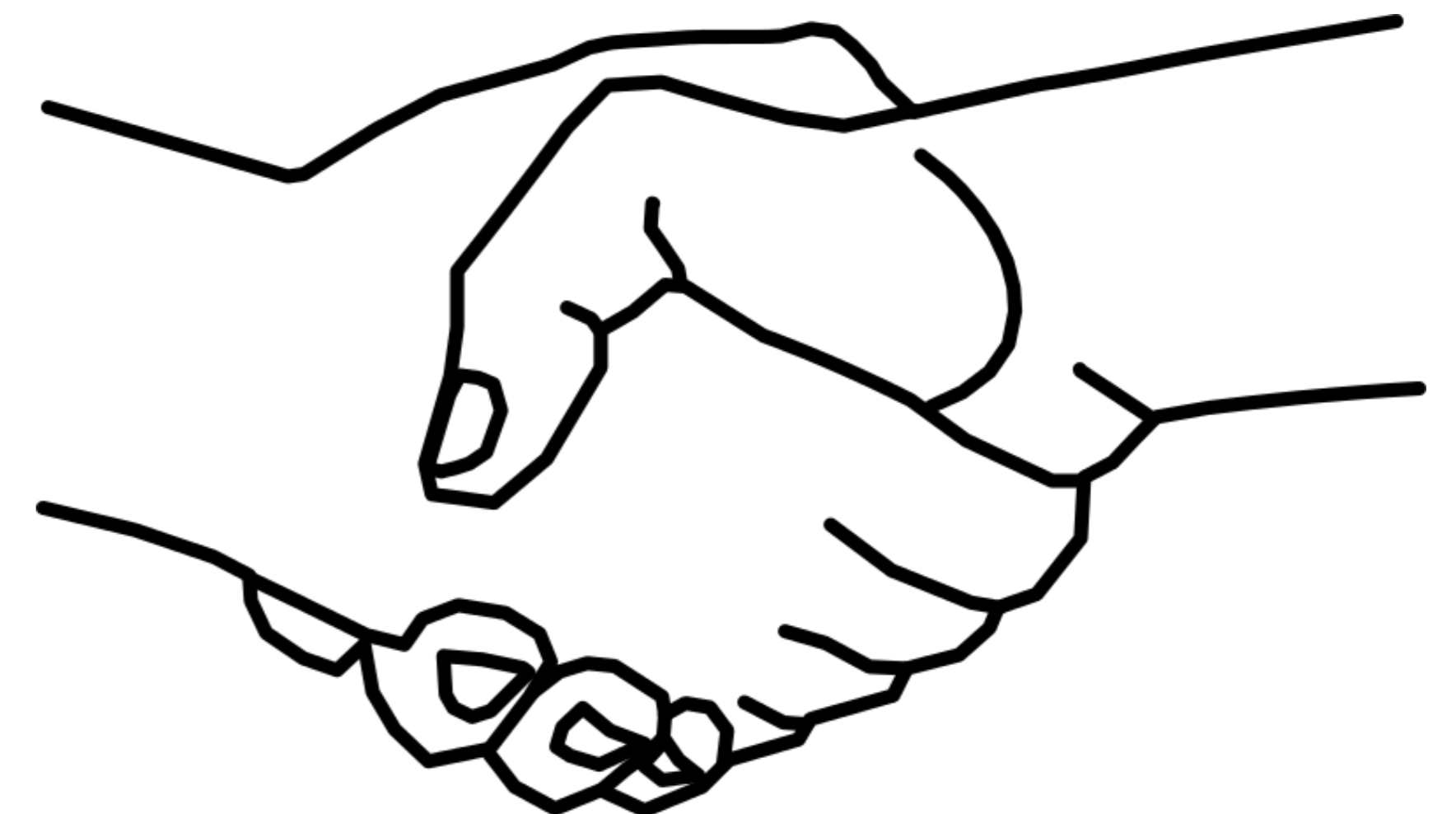
## Your comments are invited on the...

### Agreed Order

This formal legal agreement between Ecology and Port Blakely Tree Farms requires Port Blakely Tree Farms to:

- Conduct a **remedial investigation** to describe the nature and extent of the contamination on the site.
- Conduct a **feasibility study** to evaluate cleanup options for the site.
- Submit a draft **cleanup action plan** to outline proposed cleanup actions for the site.

...in accordance with the Model Toxics Control Act, and with oversight from Ecology.





## Your comments are invited on the...

### Public Participation Plan

This plan details how Ecology follows the Model Toxics Control Act in our commitment to informing and engaging the public about this project. This includes:

- Distributing notices to anyone who lives within a one-mile radius or who expresses interest.
- Holding public comment periods before key planning documents are final.
- Making information available online and at the Bainbridge Public Library (as available) during comment periods.

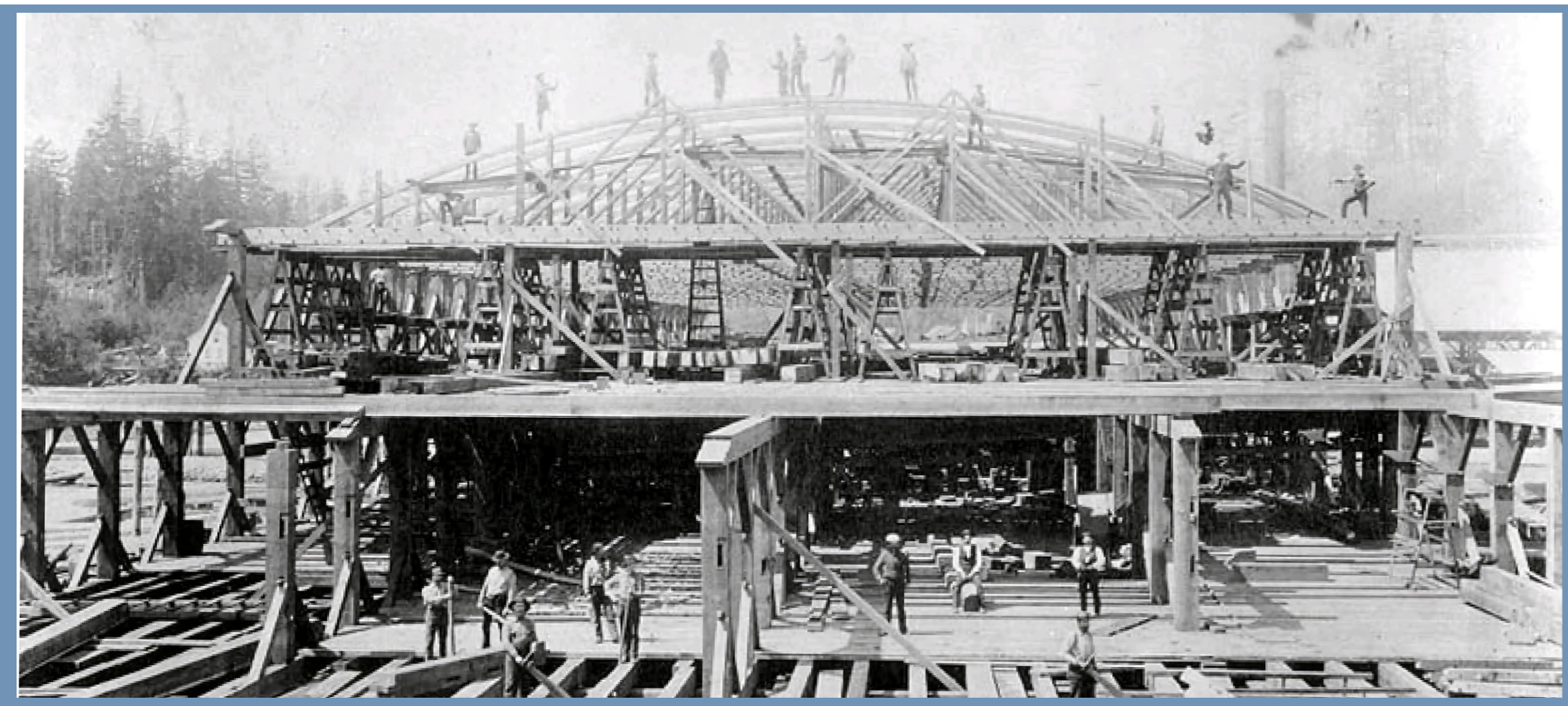




# Blakely Harbor Park Site

## Cleanup. Restoration. Preservation.

*Re-building the mill after fire in 1888.*

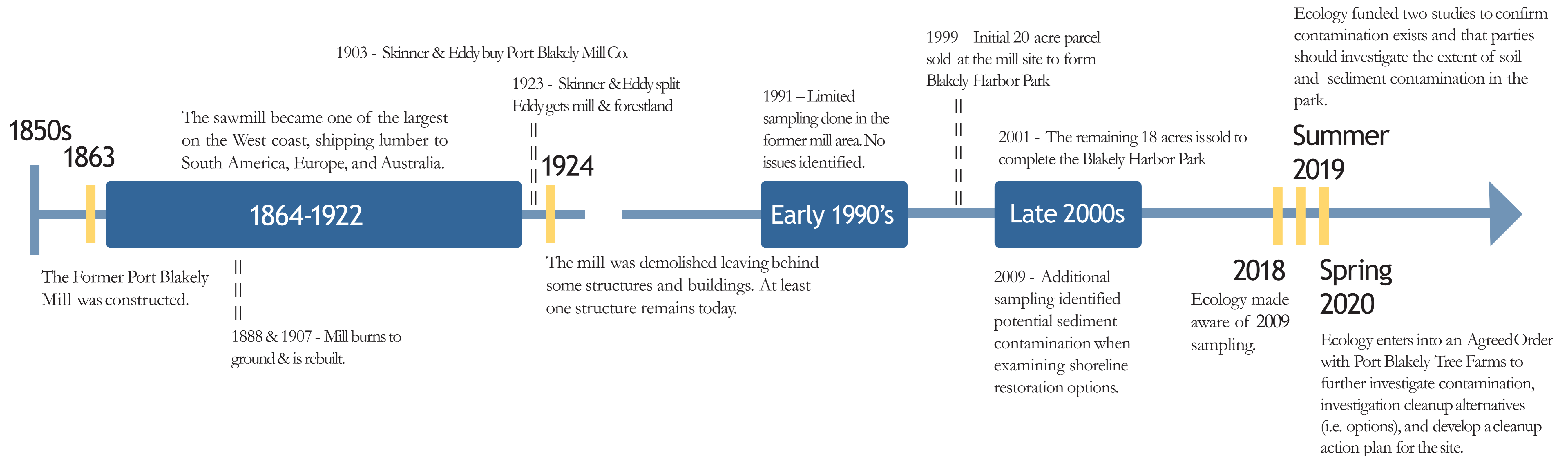


*Photo Credit: Port Blakely*

*Islandwood field trip, 2019.*



*Photo Credit: Islandwood*



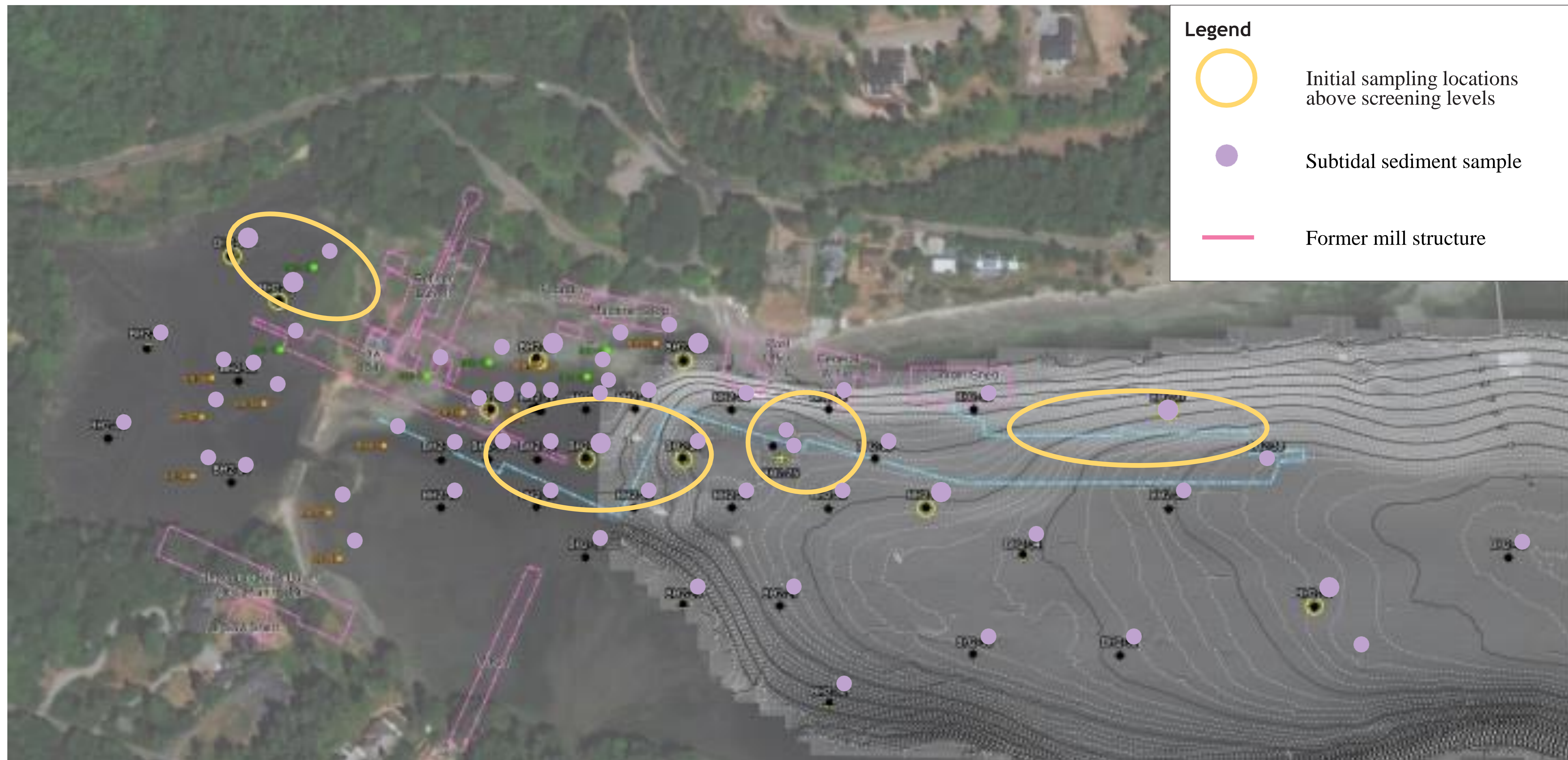


## Ecology's 2019 soil and intertidal sediment sampling locations





## Ecology's 2019 subtidal sediment sampling locations





## What comes next?

### 1. Remedial investigation

- Port Blakely Tree Farms will define the extent and nature of contamination on the site by conducting additional sampling.
- The sampling results will assess potential risks to human health and the environment, and will indicate where cleanup is needed.



*Photo Credit: Ecology, John Eckerd*



## What comes next?

### 2. Feasibility study

- The feasibility study will develop a number of cleanup options and recommend a preferred alternative.
- To choose the preferred alternative, Ecology will weigh protectiveness, permanence, cost, effectiveness over the long term, management of short-term risks, and technical implementability.



*Photo Credit: Ecology, John Eckerd*



## What comes next?

### 3. Cleanup action plan

- Presents cleanup goals and describes the preferred method of cleanup.
- Directly informed by the remedial investigation and feasibility study.

Public review and comments will be invited on all of these plans before they are final.



*Photo Credit: Ecology, John Eckerd*

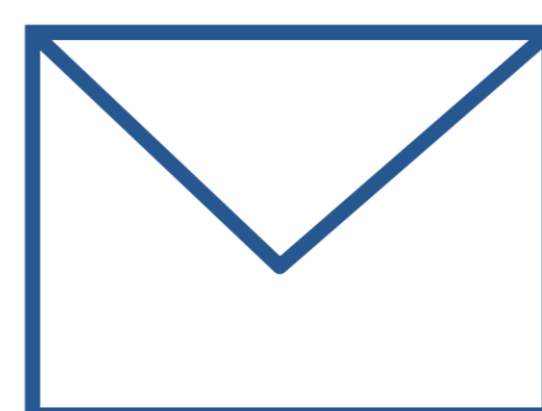


Thank you for attending our online open house!

Submit written comments by April 1, 2020



<https://tinyurl.com/uehbqtv>



John Evered, Toxics Cleanup Program  
Washington Dept of Ecology  
PO Box 47600  
Olympia, WA 98504-7600

## Questions?

- Read more online at: <https://tinyurl.com/y336vk28>
- Contact site manager: John.Evered@ecy.wa.gov, 360-407-7071



Photo Credit: Bainbridge Historical Society