

APPENDIX A

Photographs of Historical Land Use

Creosoting Plant Facility (Photographs 1 to 4)



Bridge stringers as they arrive at the creosoting plant for treatment. The daily capacity of this plant is 40,000 feet is the both will. Photograph 1. "Bridge stringers as they arrive at the creosoting plant for treatment. The daily capacity is 40,000 feet." (American Lumberman, 1921)



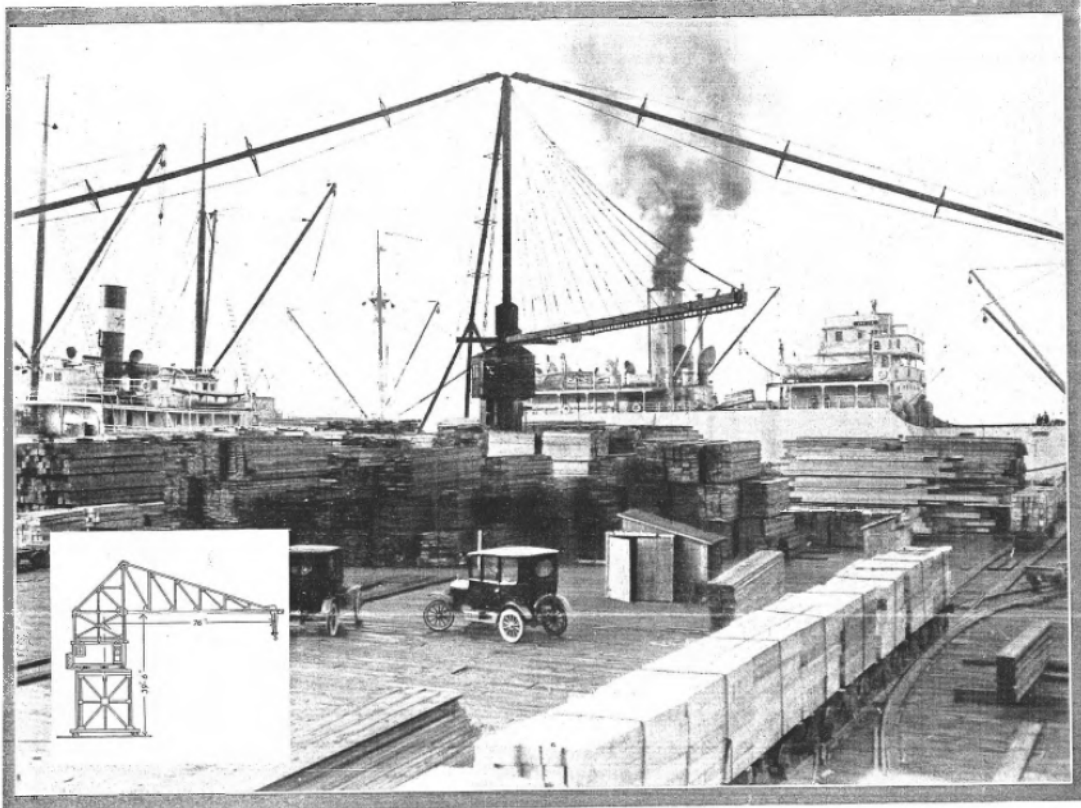
A partial view of the creosoting plant of the St. Paul & Tacoma Lumber Co., at Tacoma, Wash. In the foreground are shown treated piling. Piling, poles, timbers, and railroad ties are the principal creosoted products

Photograph 2. “A partial view of the creosoting plant of the St. Paul & Tacoma Lumber Co., at Tacoma, Wash. In the foreground are shown treated piling. Piling, poles, timbers, and railroad ties are the principal creosoted products.” (American Lumberman, 1921)



Immense quantities of ties are produced by the St. Paul & Tacoma Lumber Co., for both domestic and export trade. Those here shown are on the cargo dock ready for export.

Photograph 3. “Immense quantities of ties are produced by the St. Paul & Tacoma Lumber Co., for both domestic and export trade. Those here shown are on the cargo dock ready for export.” (American Lumberman, 1921)



Cargo dock of the St. Paul & Tacoma Lumber Co. at Tacoma, Wash., showing two steamers being loaded at one time. The electric railway terminating here leads direct to every shed, yard and mill on the entire plant. Insert shows new electric crane now installed and in operation.

Photograph 4. "Cargo dock of the St. Paul & Tacoma Lumber Co., at Tacoma, Wash., showing two steamers being loaded at one time. The electric railway terminating here leads direct to every shed, yard and mill on the entire plant. Insert shows new electric crane now installed and in operation." (American Lumberman, 1921)

Coke Plant (Photographs 5 to 10)



Photograph 5. “Coke plant interior and exterior for Wilkeson Products. On May 28, 1943, the first coke oven was charged at this site. After its success six more ovens were charged the following day. During the first week of June 1943, operations began at this million-dollar Pacific Northwest coke plant.” (Richards Studio D17139-1; image date: 1944-03-09)



Photograph 6. "Coke plant interior and exterior for Wilkeson Products. The Wilkeson Products Coke plant is an affiliate of the St. Paul and Tacoma Lumber Company and only uses Wilkeson coal, the only coking coal in Washington." (Richards Studio D17139-3; image date: 1944-03-09)



Photograph 7. “Coke plant interior and exterior for Wilkeson Products. The Wilkeson Coke plant will provide shipments to defense plants in the Pacific Northwest, as well as, gas supplies for heating and cooking in Tacoma. Tacoma will be fortunate enough to have unlimited gas supplies during [he cold winter months.” (Richards Studio D17139-4; image date: 1944-03-09)



Photograph 8. “Coke plant interior and exterior for Wilkeson Products. The Wilkeson Coke plant produces a high grade metallurgical coke that goes into the new carbide plant. Another by product is coal-tar.” (Richards Studio D17139-5; image date: 1944-03-09)



Photograph 9. “Coke plant interior and exterior for Wilkeson Products. This war-sponsored new industry has suffered endless labor shortages. The plant demands full operation on a 24-hour, 7-day basis. The increase in production will result in endless supplies of gas locally.” (Richards Studio D17139-6; image date: 1944-03-09)



Turner Richards Studio, Tacoma

Photograph 10. “Coke plant interior and exterior for Wilkeson Products. Non-stop operations at the Wilkeson Coke plant have been difficult to maintain, but a necessary task. Plant provides shipments to commercial businesses and residents of Tacoma. Coke plant is the only one of its kind to the Pacific Northwest.” (Richards Studio D17139-8; image date: 1944-03-09)

Metals Recycling Facility (Photograph 11)



Photograph 11. “Aerial view of General Metals of Tacoma Inc. The company was located at 1919 Canal (now Portland Ave.) It was established In 1954 and specialized in scrap recovery and junk dealing. Leslie P. Sussman was the company president. General Metals is located to the north of bottom bridge next to the Puyallup River. Railroad tracks and open freight cars stand amid huge piles of metal. The large complex of buildings with the log boom pond at the top of the photos is St. Paul & Tacoma Lumber Co.” (Richards Studio D102514-1; image date: 1956-10-21)

RCRA INSPECTION REPORT

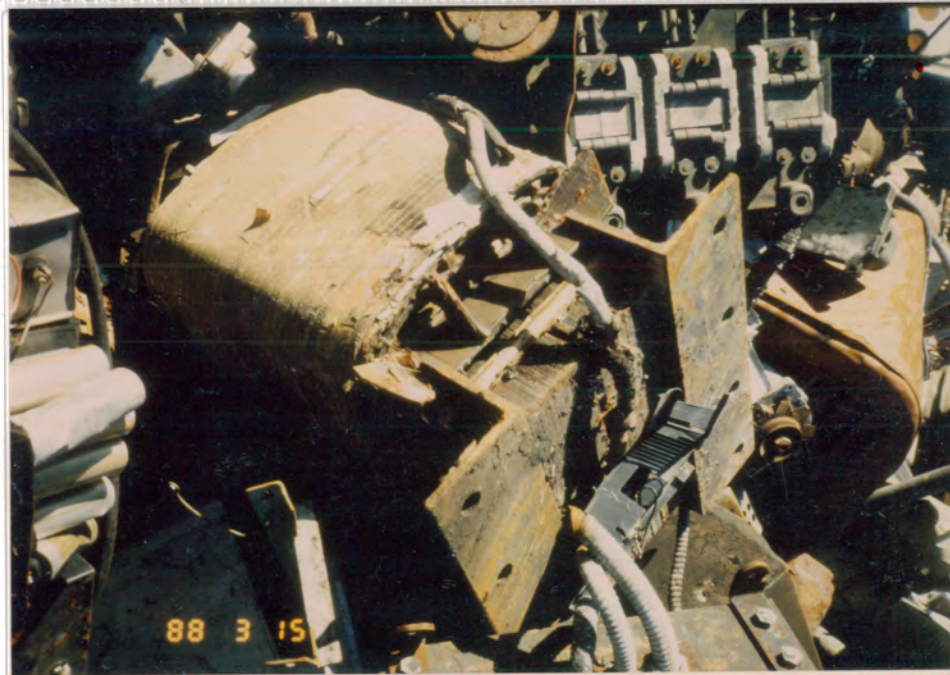
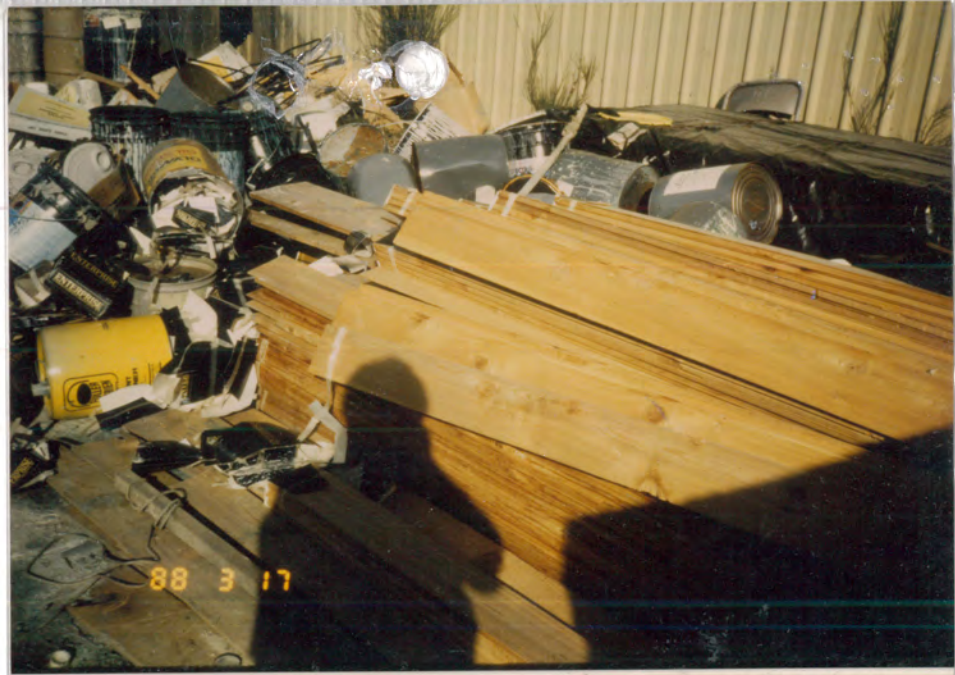
Date March 15 1988Inspector Paul Stasch
Toly MicheleroTacoma Metals

Toly and I met with Ecology and Environment personnel Dave Roland Doug Gresham and ~~Bob~~ John ~~Sanbury~~ Sanbury at 0900 at Dennys for a breakfast meeting to plan the strategy for the ECE ST and Ecology inspectors. I was conducting a Dangerous Waste inspection, Toly was conducting a TSCA inspection. The inspection had been announced by ECE much to our displeasure but I don't feel it made a difference. We entered the site at approximately 1015 and met with Bob Pollock, President. We discussed the site history in his office. Tacoma Metals use to be affiliated with General Metals but has been separate since May 15 1983. The site is fascinating with various areas dedicated exclusively to this kind of metal or that type of scrap. The tour was led by Mr. Pollock and the four regulators just fanned out and would return when a question arose. Mr. Pollock is a heavy set man who limped badly so was not as agile. Metal contamination

Paul Stasch

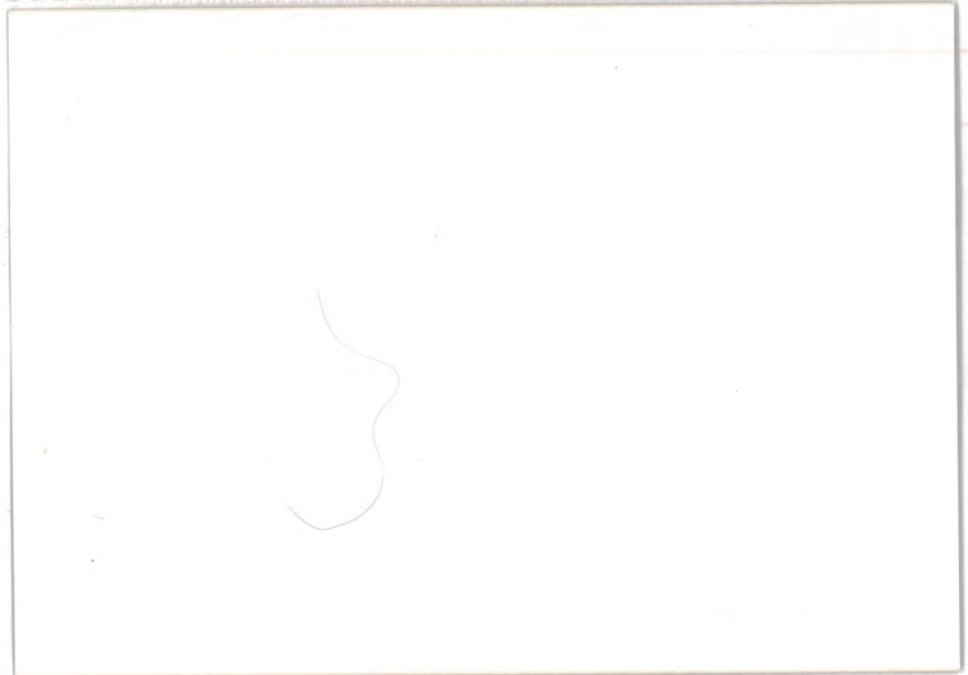
(Inspector's Signature)

can reasonably be expected. I will return in approximately two weeks to give the laboratory proper notice and will sample the storm drains that empty into the adjacent River. After lunch we returned to sample. E E E set up grids to characterize different areas. They did not feel they could accomplish their goals by the end of the 15th and planned on returning on the 16th. Today took two PCB samples, one PP metals and one E.P. tox metals.

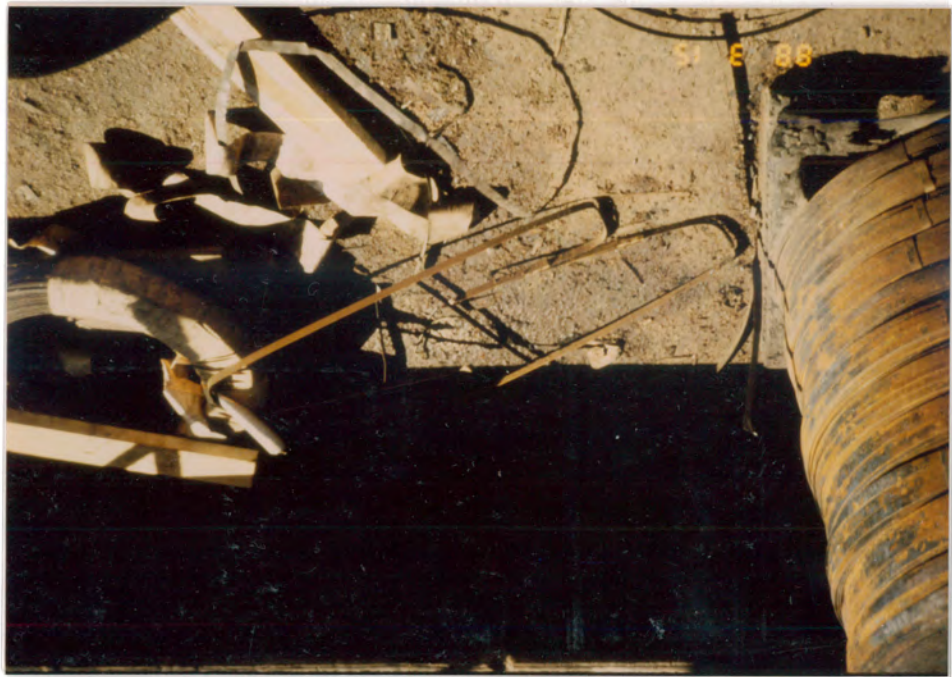


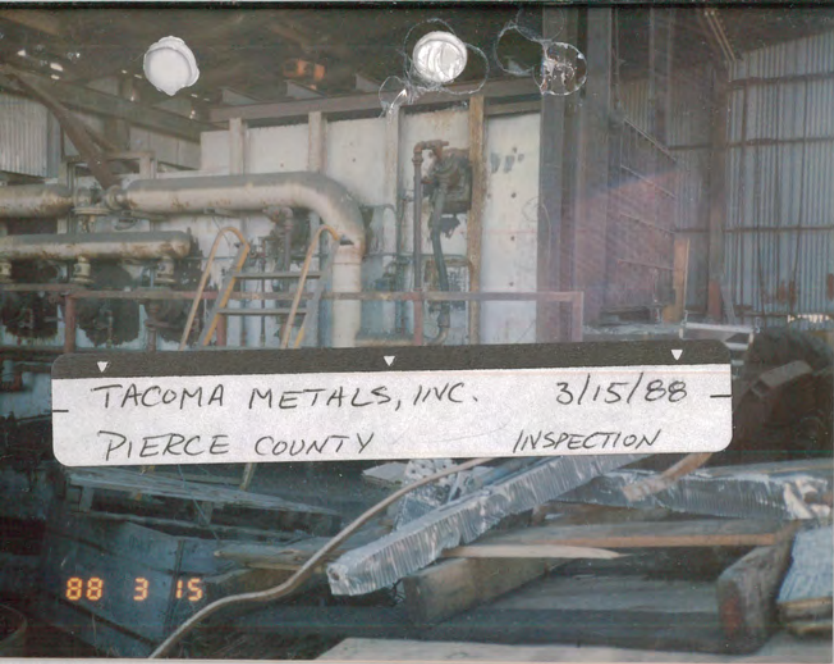












TACOMA METALS, INC. 3/15/88
PIERCE COUNTY INSPECTION

88 3 15



88 3 15



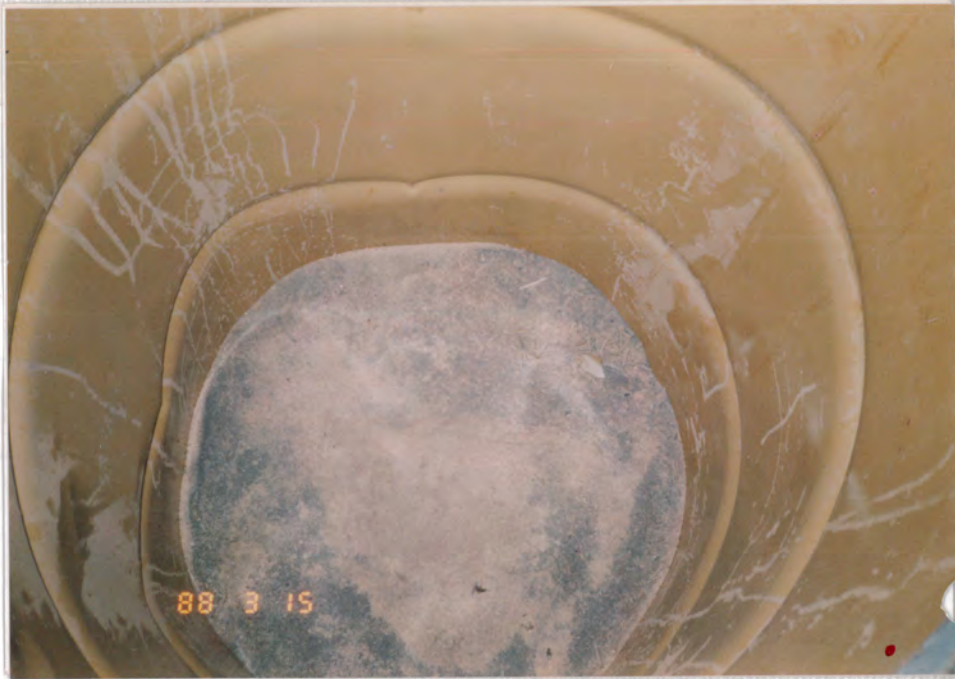
88 3 15



88 3 15



88 3 15



3/15/88 Inspection



3/15/88 Disposition

① Tacoma Metals, March 15 1988. Aluminum cross on the outside of the fence. Paul Stasch Toly Michelene

② Tacoma Metals March 15 1988 Aluminum cross on the inside of the fence along the River. Paul Stasch Toly Michelene

③ Tacoma Metals March 15 1988. Radiator pile west end of the scrap yard Paul Stasch Toly Michelene



④ Tacoma Metals March 15
1988. Aluminium Dross on the
outside of the fence. Paul
Storch Toby Michelene

④

Tacoma Metals March 15
1988. Radiator Pile. Paul
Storch Toby Michelene

⑤ Tacoma metal, March
15 1988. Mercury storage.
Paul Storch Toby Michelene





⑦

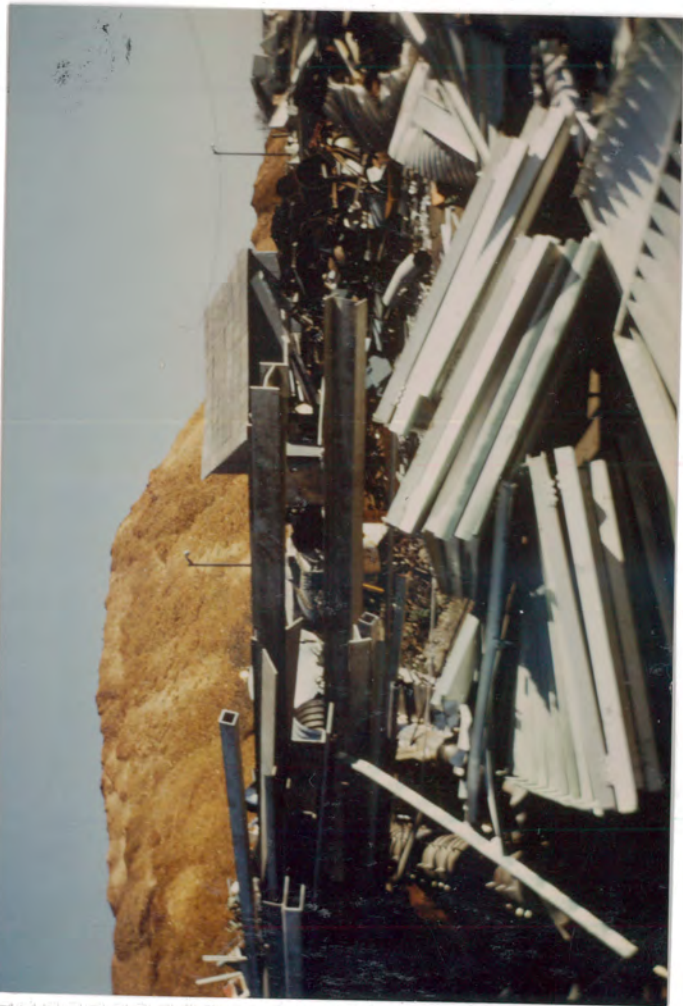
Tacoma Metals March 15 1988.
Radiator pile on the west
end of the scrap yard.
Paul Starck Toby Michelena

⑧

Tacoma metal, March 15
1988. Aluminium coils Paul
Starck Toby Michelena

⑨

Tacoma Metals March 15
1988. Radiator pile on the
west end of the scrap
yard. Paul Starck Toby
Michelena



(10)

Tacoma Metals March 15
1988 Paul Stoeck Toly
Michelena

(11)

Tacoma Metals, March 15
1988. Aluminium. Paul
Stoeck Toly Michelena

(12)

Tacoma Metals March
15 1988. Aluminium. Moss on
the outside of the jars along
the river. Paul Stoeck
Toly Michelena



13

Tacoma Metals March
15 1988. Drums of cross.
Paul Starck Tony Michelera

Tacoma Metals
 I.I / Pre SHA Reconnaissance
 4/3/92 - R. Heggen / Ecology Swfo
 Camera = Olympus infinity Twin.

Set 1



↑ View = Looking North at West end of Site - Mostly Aluminum Scrap.
 Note wood chips (Simpson) Pulp pile in background - (Adjacent Property to North)



↑ View = to West of Drain in foreground and main Building in background.



Sump at or Near Location SD-1 East of Main Building



View to west of site from east end. Note Puyallup River to Northend dike with flood on top between site & river. Also note dark slag-like deposit between site and fence.



North side of Storage building - Sample location SD-2 - (Storm drain) under piles of scrap.



Close up of dark slag like deposit near North east end of site sample # TACMET-1



↑ View to North and East from (approx.) Sample Location - 378 & 380 - panorama
Cont'd ↓



View (approximate) of Sample Location 378
& 380
to N.E.





Panoramic view to North & East of Tacoma Metals site shot from across (south side) Portland Ave.



View of Boiler Building looking west
Drum is located next to the Rusty Drum in front



Close up of drain just east of Boiler Building.
(Same location 376 & 37)

20th Century Plastics
1-800-767-0777
STOCK # PPV830-000

