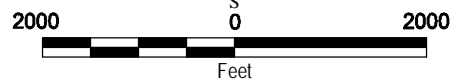
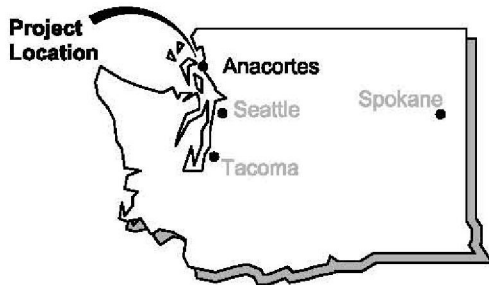
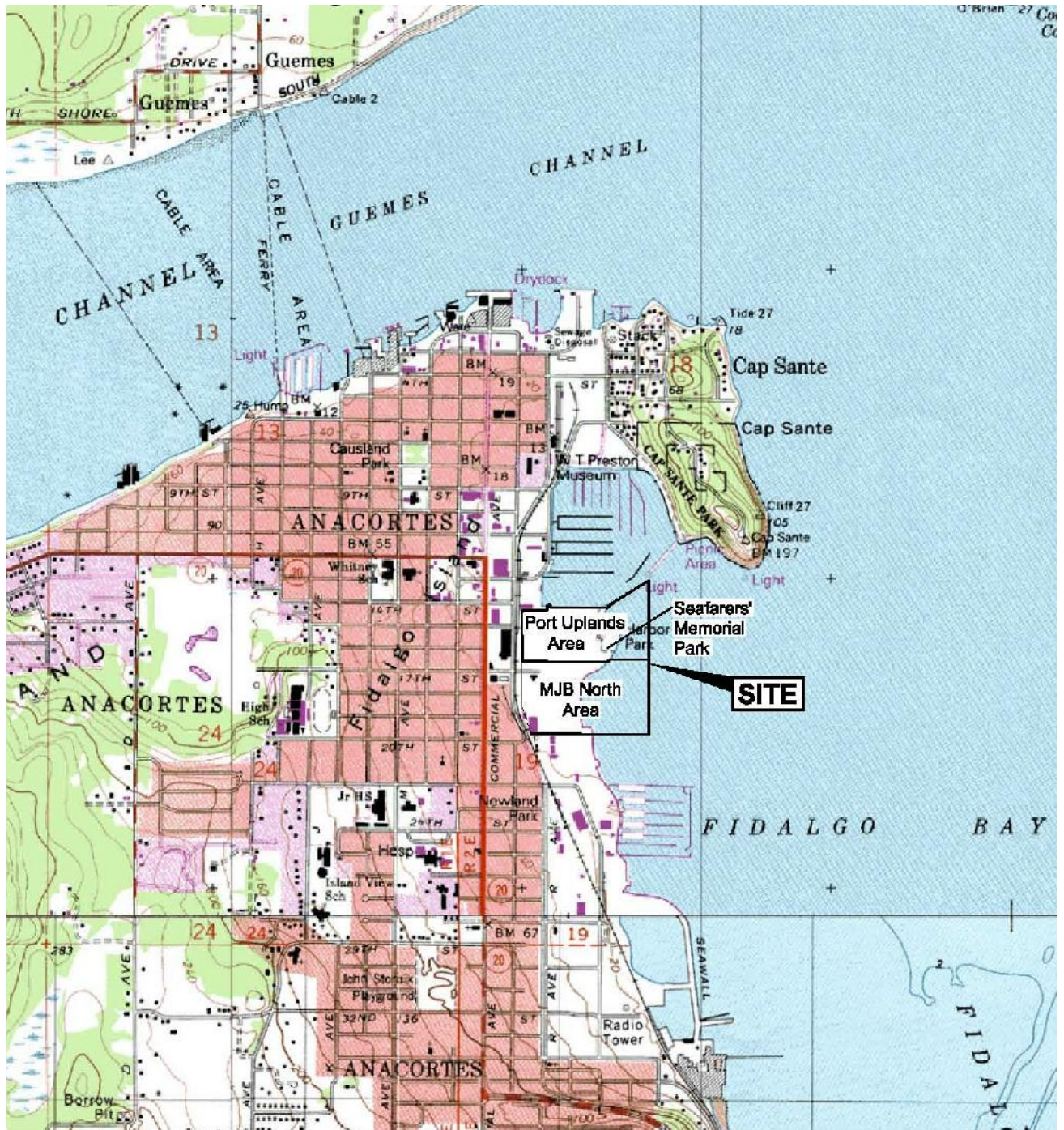


W:\SEATTLE\PROJECTS\515147007\02\CAD\APRIL 08 RI FIGURES\514700702\FI.DWG\TAB\FI MODIFIED BY LKNOWLTON ON MAR 18, 2008 - 13:36



Vicinity Map

Scott Paper Mill
Anacortes, Washington



Figure 1

Source: PDF of Figure 1, Vicinity Map, provided by Landau Associates, dated 10/05/06.



Source: AutoCAD figure provided by Landau Associates, dated September 2006. Base map source: David C. Smith and Associates, July 2004.

Legend

-  Existing Building
-  Monitoring Well with Designation

Site Plan

Scott Paper Mill
Anacortes, Washington



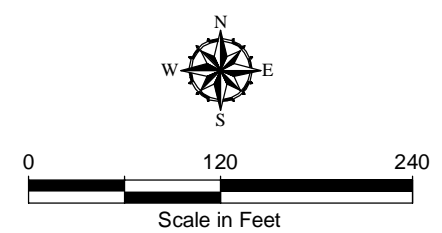
Figure 2

W:\SEATTLE\PROJECTS\151514\7007102\CAD\F3-CURRENT FIGURES\F3-3.DWG\TAB\F3 MODIFIED BY LKNOWLTON ON APR 08, 2008 - 15:07



Reference Information

1. The locations of all features shown are approximate.
 2. This drawing is for information purposes. It is intended to assist in showing features discussed in an attached document. GeoEngineers, Inc. can not guarantee the accuracy and content of electronic files. The master file is stored by GeoEngineers, Inc. and will serve as the official record of this communication.
- Source: AutoCAD drawing entitled "ES-4, Port Uplands Area Preliminary Soil Cleanup Level Exceedance Locations (0-2 ft BGS)", dated 9/18/2006, provided by Landau Associates. Base map source: Port of Anacortes, June 2004.



Port Uplands Area Preliminary Soil Cleanup Level Exceedance Locations (0-2 ft BGS)

Scott Paper Mill
Anacortes, Washington

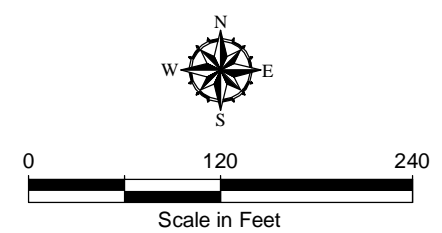
GEOENGINEERS  **Figure 3**

W:\SEATTLE\PROJECTS\151514\7007\02\CAD\IFS-CURRENT FIGURES\FS-4.dwg\TAB\F4 MODIFIED BY LKNOWLTON ON APR 08, 2008 - 15:15



Reference Information

- The locations of all features shown are approximate.
 - This drawing is for information purposes. It is intended to assist in showing features discussed in an attached document. GeoEngineers, Inc. can not guarantee the accuracy and content of electronic files. The master file is stored by GeoEngineers, Inc. and will serve as the official record of this communication.
- Source: AutoCAD drawing entitled "ES-5, Port Uplands Area Preliminary Soil Cleanup and Remediation Level Exceedance Locations (2-6 ft BGS)", dated 9/18/2006, provided by Landau Associates. Base map source: Port of Anacortes, June 2004.



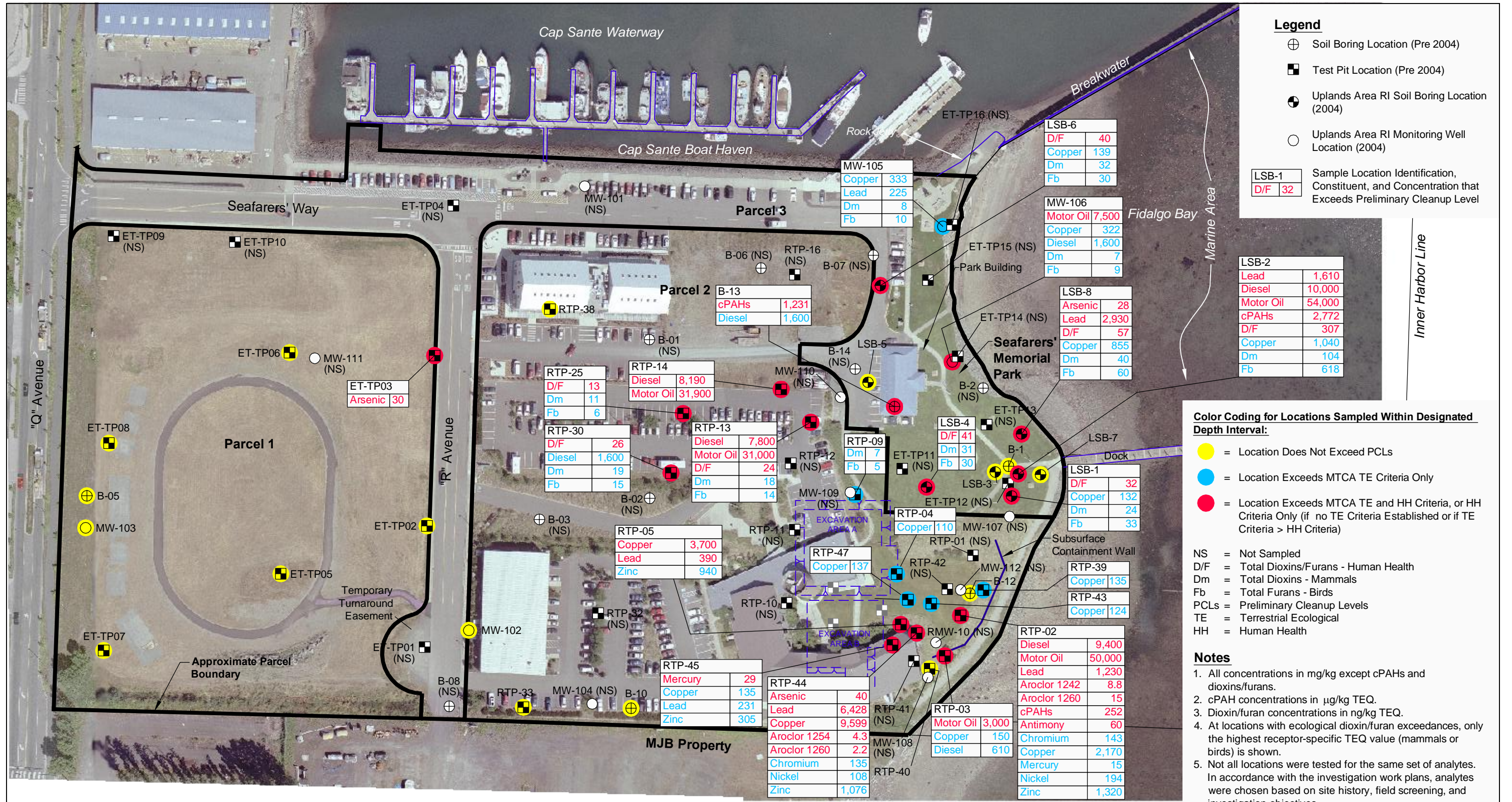
Port Uplands Area Preliminary Soil Cleanup Level Exceedance Locations (2-6 ft BGS)

Scott Paper Mill
Anacortes, Washington

GEOENGINEERS

Figure 4

W:\SEATTLE\PROJECTS\1516\47007\02\CAD\FS-CURRENT FIGURES\FS-5.DWG\TAB\F5 MODIFIED BY LKNOWLTON ON APR 08, 2008 - 15:23



Legend

- ⊕ Soil Boring Location (Pre 2004)
- Test Pit Location (Pre 2004)
- ⊕ Uplands Area RI Soil Boring Location (2004)
- Uplands Area RI Monitoring Well Location (2004)

LSB-1	Sample Location Identification, Constituent, and Concentration that Exceeds Preliminary Cleanup Level
D/F	32

LSB-2	Lead	1,610
	Diesel	10,000
	Motor Oil	54,000
	cPAHs	2,772
	D/F	307
	Copper	1,040
	Dm	104
	Fb	618

Color Coding for Locations Sampled Within Designated Depth Interval:

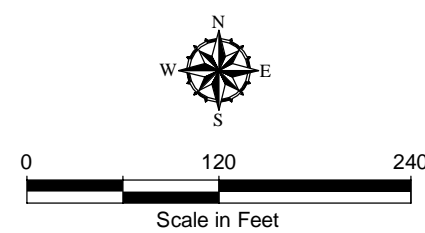
- = Location Does Not Exceed PCLs
- = Location Exceeds MTCA TE Criteria Only
- = Location Exceeds MTCA TE and HH Criteria, or HH Criteria Only (if no TE Criteria Established or if TE Criteria > HH Criteria)

- NS = Not Sampled
- D/F = Total Dioxins/Furans - Human Health
- Dm = Total Dioxins - Mammals
- Fb = Total Furans - Birds
- PCLs = Preliminary Cleanup Levels
- TE = Terrestrial Ecological
- HH = Human Health

- Notes**
- All concentrations in mg/kg except cPAHs and dioxins/furans.
 - cPAH concentrations in µg/kg TEQ.
 - Dioxin/furan concentrations in ng/kg TEQ.
 - At locations with ecological dioxin/furan exceedances, only the highest receptor-specific TEQ value (mammals or birds) is shown.
 - Not all locations were tested for the same set of analytes. In accordance with the investigation work plans, analytes were chosen based on site history, field screening, and investigation objectives.

Reference Information

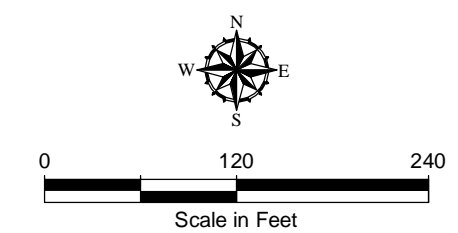
- The locations of all features shown are approximate.
 - This drawing is for information purposes. It is intended to assist in showing features discussed in an attached document. GeoEngineers, Inc. can not guarantee the accuracy and content of electronic files. The master file is stored by GeoEngineers, Inc. and will serve as the official record of this communication.
- Source: AutoCAD drawing entitled "ES-6, Port Uplands Area Preliminary Soil Cleanup and Remediation Level Exceedance Locations (6-10 ft BGS)", dated 9/18/2006, provided by Landau Associates. Base map source: Port of Anacortes, June 2004.



Port Uplands Area Preliminary Soil Cleanup Level Exceedance Locations (6-10 ft BGS)

Scott Paper Mill
Anacortes, Washington

Figure 5



Port Uplands Area Preliminary Soil Cleanup Level Exceedance Locations (10-15 ft BGS)

Scott Paper Mill
Anacortes, Washington

GEOENGINEERS

Figure 6

Plot Date: 03/14/08 - 4:33pm. Plotted by: astenberg
 Drawing Path: S:\10131\002_RL Drawing Name: MJB Uplands Prelim Soil Cleanup Fig 1.dwg



EXPLANATION

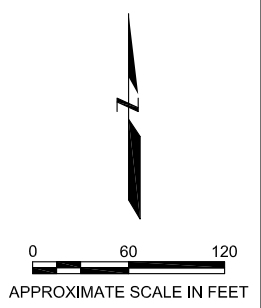
- Monitoring Well Location
- Push Probe Soil Sample Location
- ◆ Test Pit Sample Location
- ▲ Soil Sample Location
- ⊕ Soil Boring Location
- Shore Line (approximate)
- - - Property Line
- Parcel Line
- x - Fence Line
- x - Proposed Security Fence
- ▨ Parking or Tree Area

Color Coding for Locations Sampled Within Designated Depth Interval:

- Location Does Not Exceed PCLs (4 or More Constituents analyzed)
- Location Exceeds MTCA TE Criteria Only
- Location Exceeds MTCA TE and HH Criteria, or HH Criteria Only (if no TE Criteria Established or if TE > HH Criteria)

Notes:

- Soil Samples not highlighted were below PCL's and fewer than 4 constituent analytes.
- Not all locations were tested for the same set of analytes. In accordance with the investigation work plans, analytes were chosen based on site history, field screening, and investigation objectives.
- Results shown in mg/kg.
- Aerial photograph from City of Anacortes (2003)



**PRELIMINARY SOIL CLEANUP LEVEL
 EXCEEDANCE LOCATIONS
 (0-2 ft BGS)
 MJB North Area
 Anacortes, Washington**

By: APS Date: 03/14/08 Project No. 10131

Geomatrix Figure **7**

Plot Date: 03/14/08 - 4:35pm. Plotted by: astenberg
 Drawing Path: S:\10131\002_RL Drawing Name: MJB Uplands Prelim Soil Cleanup Fig 2.dwg



EXPLANATION

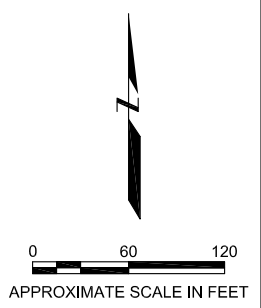
- Monitoring Well Location
- Push Probe Soil Sample Location
- ◆ Test Pit Sample Location
- ▲ Soil Sample Location
- ⊕ Soil Boring Location
- Shore Line (approximate)
- - - Property Line
- Parcel Line
- x - Fence Line
- x - Proposed Security Fence
- ▨ Parking or Tree Area

Color Coding for Locations Sampled Within Designated Depth Interval:

- Location Does Not Exceed PCLs (4 or More Constituents analyzed)
- Location Exceeds MTCA TE Criteria Only
- Location Exceeds MTCA TE and HH Criteria, or HH Criteria Only (if no TE Criteria Established or if TE > HH Criteria)

Notes:

- Soil Samples not highlighted were below PCL's and fewer than 4 constituent analytes.
- Not all locations were tested for the same set of analytes. In accordance with the investigation work plans, analytes were chosen based on site history, field screening, and investigation objectives.
- Results shown in mg/kg.
- Aerial photograph from City of Anacortes (2003)

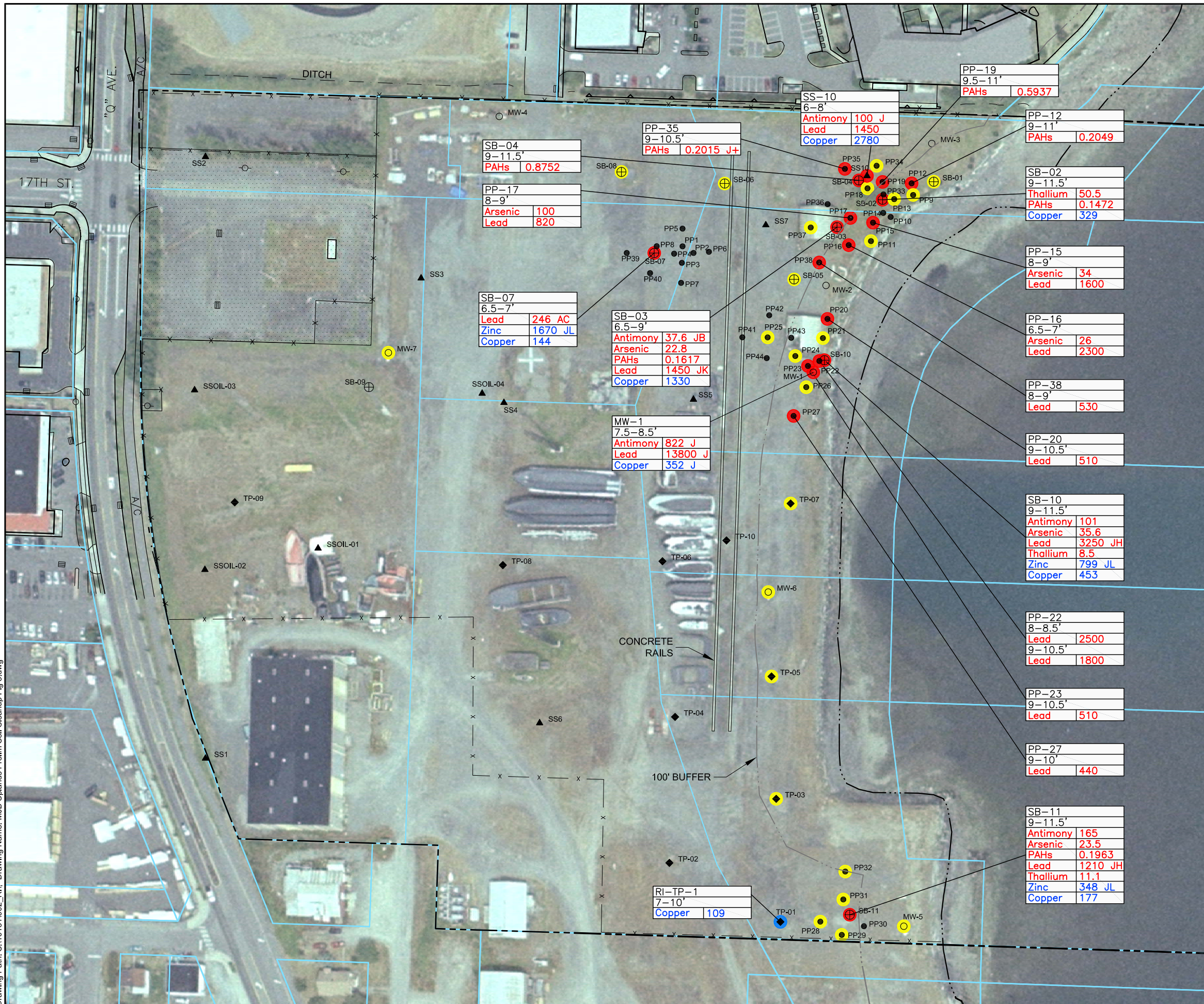


PRELIMINARY SOIL CLEANUP LEVEL EXCEEDANCE LOCATIONS (2-6 ft BGS)
MJB North Area
Anacortes, Washington

By: APS	Date: 03/14/08	Project No. 10131
---------	----------------	-------------------

Geomatrix Figure **8**

Plot Date: 03/14/08 - 4:43pm. Plotted by: astenberg
 Drawing Path: S:\10131\002_RL Drawing Name: MJB Uplands Prelim Soil Cleanup Fig 3.dwg



EXPLANATION

- Monitoring Well Location
- Push Probe Soil Sample Location
- ◆ Test Pit Sample Location
- ▲ Soil Sample Location
- ⊕ Soil Boring Location
- Shore Line (approximate)
- - - Property Line
- Parcel Line
- x - Fence Line
- x - Proposed Security Fence
- ▨ Parking or Tree Area

Color Coding for Locations Sampled Within Designated Depth Interval:

- Location Does Not Exceed PCLs (4 or More Constituents analyzed)
- Location Exceeds MTCA TE Criteria Only
- Location Exceeds MTCA TE and HH Criteria, or HH Criteria Only (if no TE Criteria Established or if TE > HH Criteria)

Notes:

1. Soil Samples not highlighted were below PCL's and fewer than 4 constituent analytes.
2. Not all locations were tested for the same set of analytes. In accordance with the investigation work plans, analytes were chosen based on site history, field screening, and investigation objectives.
3. Results shown in mg/kg.
4. Aerial photograph from City of Anacortes (2003)

SB-04
9-11.5'
PAHs 0.8752

PP-17
8-9'
Arsenic 100
Lead 820

SB-07
6.5-7'
Lead 246 AC
Zinc 1670 JL
Copper 144

SB-03
6.5-9'
Antimony 37.6 JB
Arsenic 22.8
PAHs 0.1617
Lead 1450 JK
Copper 1330

MW-1
7.5-8.5'
Antimony 822 J
Lead 13800 J
Copper 352 J

RI-TP-1
7-10'
Copper 109

SS-10
6-8'
Antimony 100 J
Lead 1450
Copper 2780

PP-35
9-10.5'
PAHs 0.2015 J+

PP-19
9.5-11'
PAHs 0.5937

PP-12
9-11'
PAHs 0.2049

SB-02
9-11.5'
Thallium 50.5
PAHs 0.1472
Copper 329

PP-15
8-9'
Arsenic 34
Lead 1600

PP-16
6.5-7'
Arsenic 26
Lead 2300

PP-38
8-9'
Lead 530

PP-20
9-10.5'
Lead 510

SB-10
9-11.5'
Antimony 101
Arsenic 35.6
Lead 3250 JH
Thallium 8.5
Zinc 799 JL
Copper 453

PP-22
8-8.5'
Lead 2500
9-10.5'
Lead 1800

PP-23
9-10.5'
Lead 510

PP-27
9-10'
Lead 440

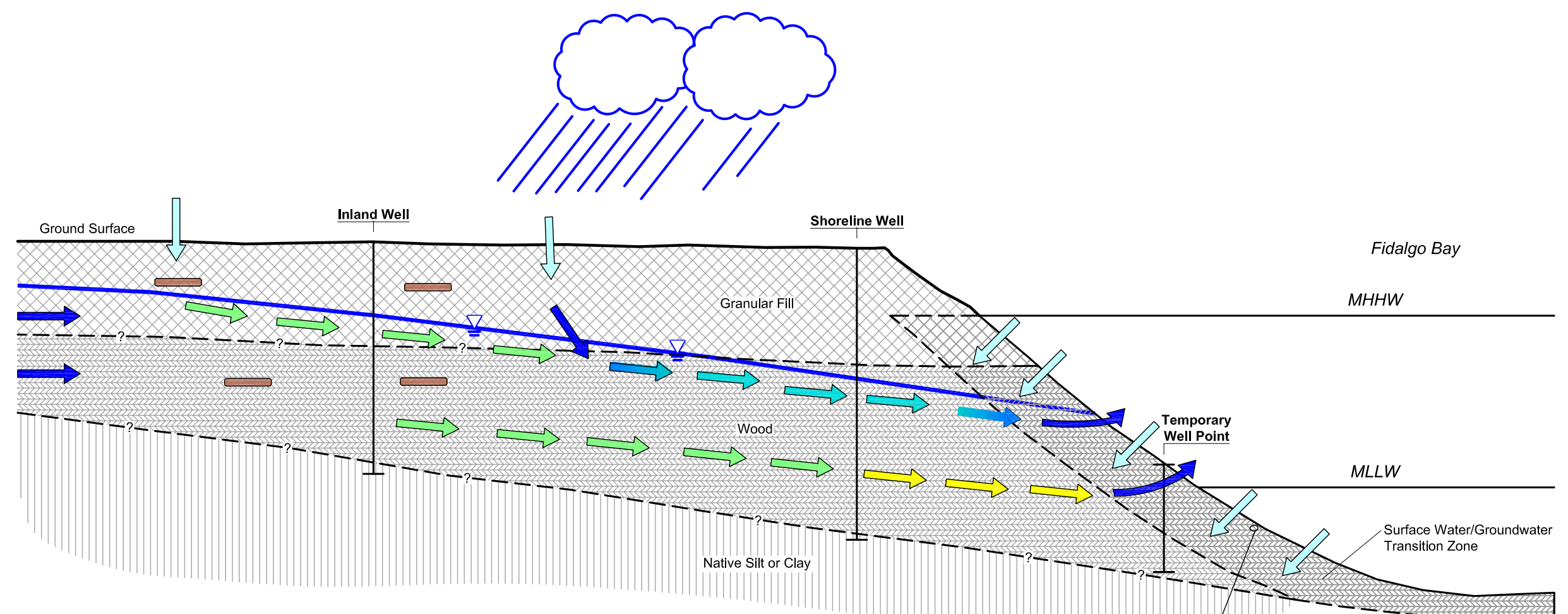
SB-11
9-11.5'
Antimony 165
Arsenic 23.5
PAHs 0.1963
Lead 1210 JH
Thallium 11.1
Zinc 348 JL
Copper 177

PRELIMINARY SOIL CLEANUP LEVEL EXCEEDANCE LOCATIONS (6-15 ft BGS) MJB North Area Anacortes, Washington

By: APS Date: 03/14/08 Project No. 10131



W:\SEATTLE\PROJECTS\5\14\7007\02\CAD\RI-CURRENT FIGURES\5\14\7007\02\F4.2.DWG\TAB.F4.2 MODIFIED BY LKNOWLTON ON MAR 31, 2008 - 14:04



Legend

- Groundwater Flow Direction not Adversely Impacted by Site Conditions
- Groundwater Impacted by Site Conditions Due to Leaching of Contaminants from Soil (Concentrations Exceed Preliminary Screening Levels)
- Groundwater Impacted by Site Conditions but at Concentrations Below the Preliminary Cleanup Levels
- Groundwater Affected by Sulfide as a Result of Decaying Wood Debris
- Surface Water Infiltration
- Localized Soil Interval with Contaminant (Arsenic, Lead, cPAHs, TPH, Dioxin/Furan) Concentrations Exceeding Preliminary Screening Levels
- Groundwater Table

Not to Scale

Reference Information

1. Black and white reproduction of this color original may reduce its effectiveness and lead to incorrect interpretation.
 2. The locations of all features shown are approximate.
 3. This drawing is for information purposes. It is intended to assist in showing features discussed in an attached document. GeoEngineers, Inc. can not guarantee the accuracy and content of electronic files. The master file is stored by GeoEngineers, Inc. and will serve as the official record of this communication.
- Source: AutoCAD figure provided by Landau Associates, dated September 2006.

Conceptual Site Model	
Scott Paper Mill Anacortes, Washington	
	Figure 10

J:\Jobs\00010501_Kimberly Clark_Anacortes\Maps\RI_FS_Figures_Working\Draft_RI_Report_May_2006\Sediment_PCB_results.mxd SMS_08/30/2006 10:43 AM

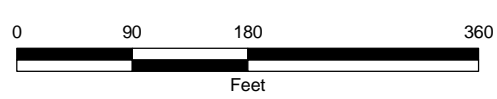
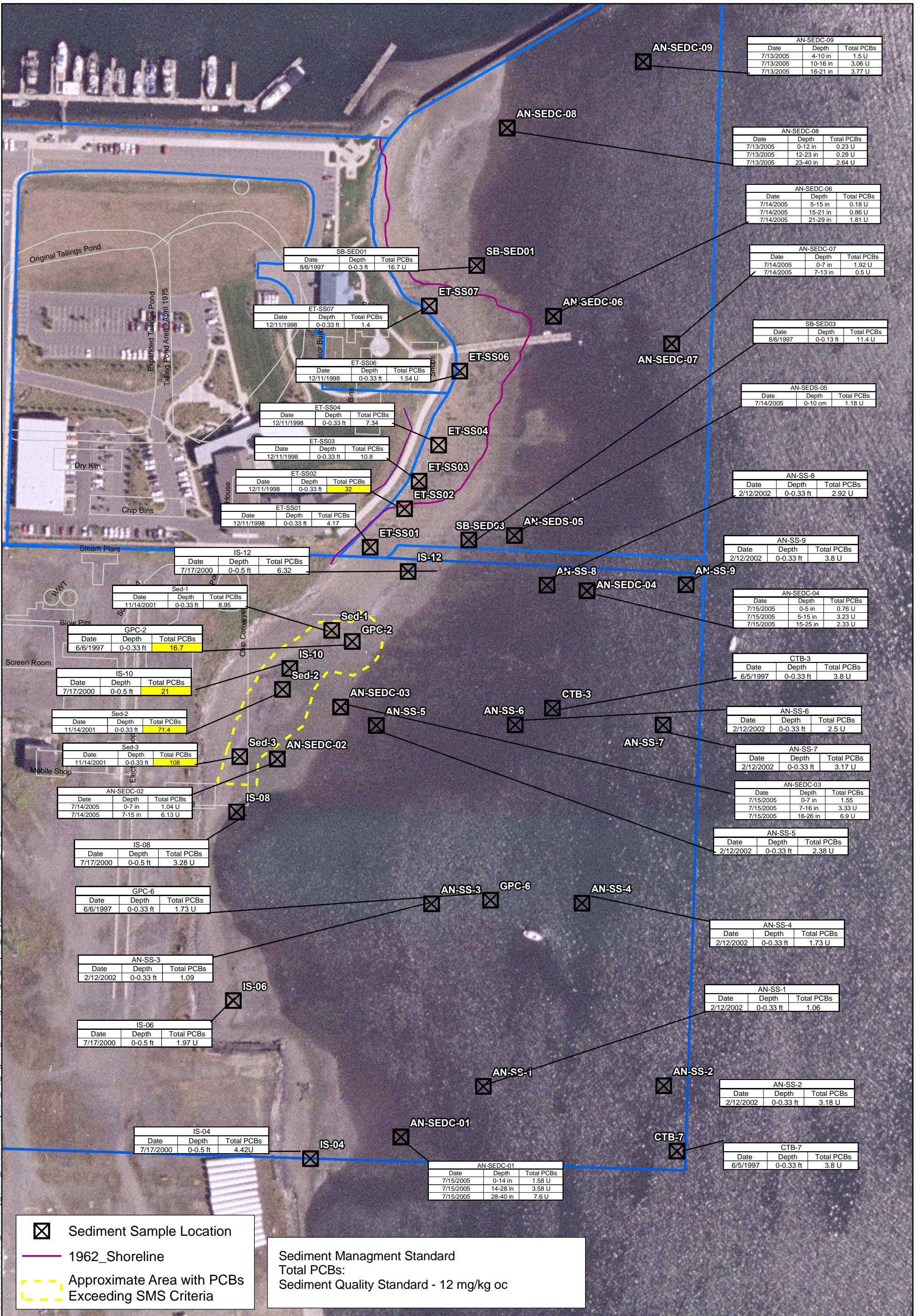
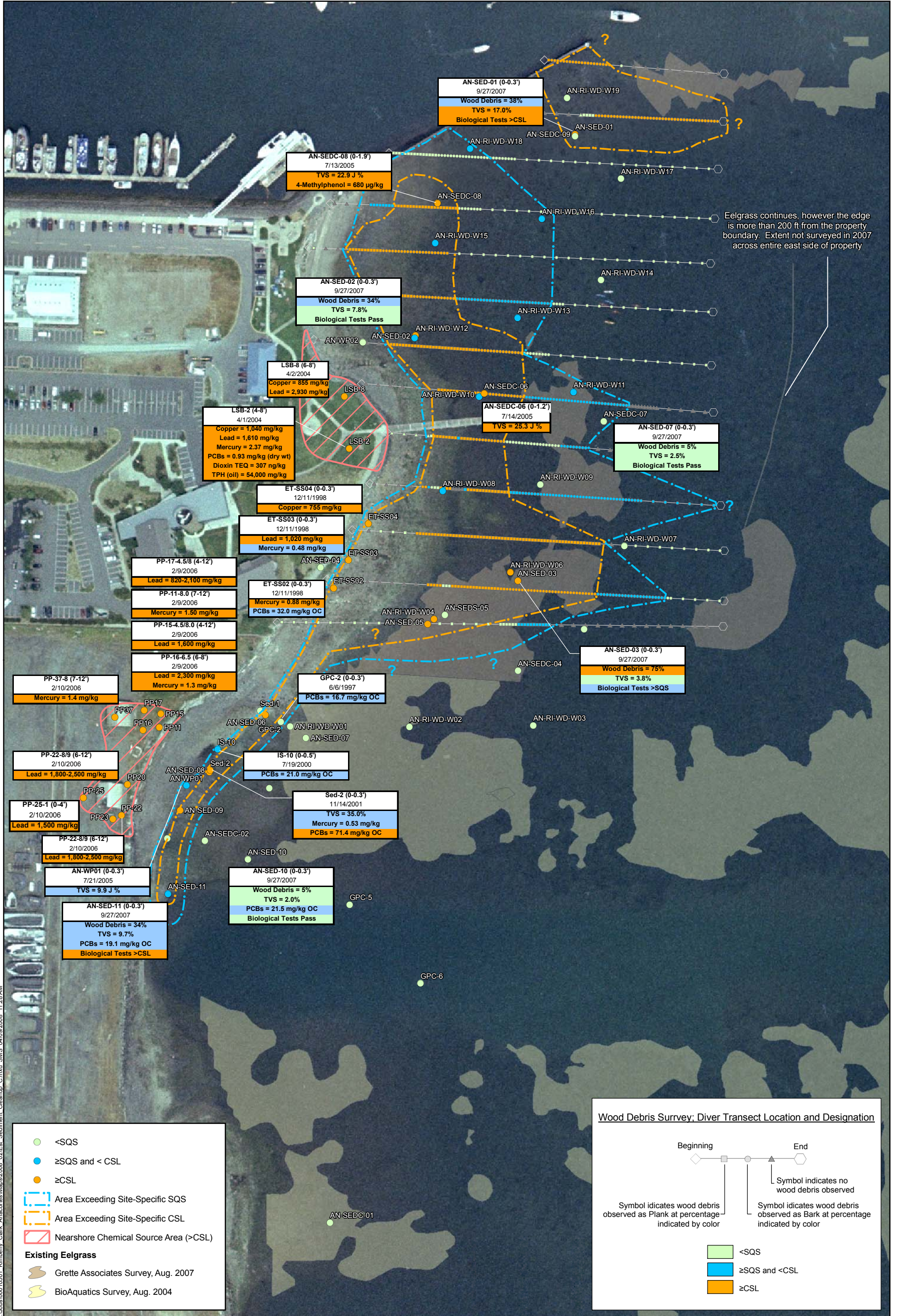


Figure 11
Summary of Total PCB Concentrations in Sediment
Marine Area
Former Scott Paper Mill



Eelgrass continues, however the edge is more than 200 ft from the property boundary. Extent not surveyed in 2007 across entire east side of property

J:\Jobs\000\0501 - Kimberly Clark Anacortes\Maps\2008_02\Est. Sediment Cleanup. C:\msd\SMS 04/09/2008 11:28 AM

K:\Jobs\000105-Kimberly Clark\000105-01\00010501-35.dwg FIG 35
Jul 27, 2006 11:30am aroark



SOURCE: Bathymetry shown is from survey provided by David Evans and Associates dated April 16, 2004.

- AN-RI-SEDC-02** ⊙ Sediment Core Location and Designation
- AN-RI-TP-07** ▣ Testpit Location and Designation
- MW-1** ⊕ Boring Location and Designation
- AN-RI-WP-01** ⊕ Well Point Location and Designation



Cross Section Location and Designation



0 200
Scale in Feet

Jul 27, 2006 11:31am cdavidson K:\Jobs\000105-Kimberly Clark\000105-01_00010501-36.dwg FIG 36

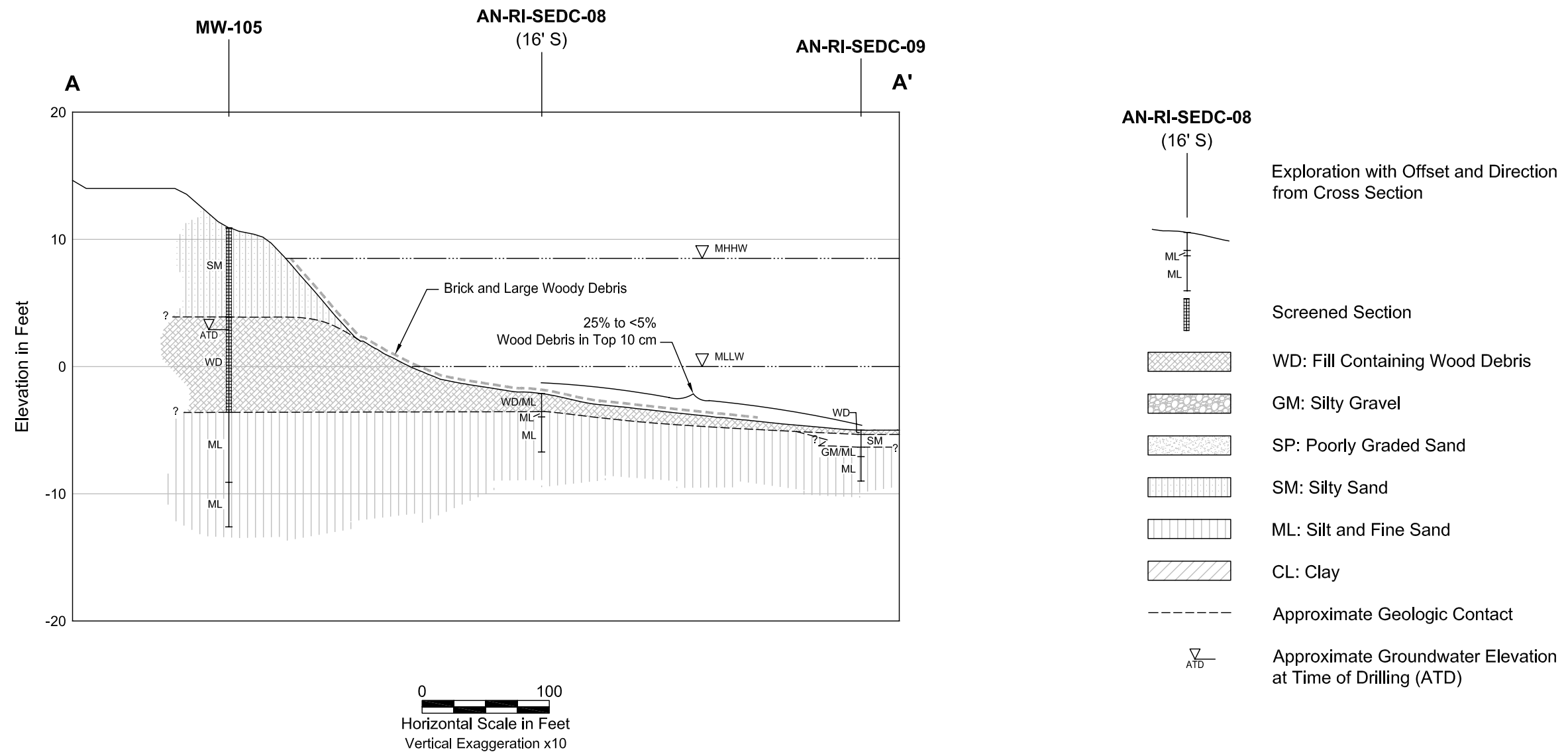


Figure 14
Cross Sections A-A'
Former Scott Paper Mill

Jul 27, 2006 11:31am cdavidson K:\Jobs\000105-01\00010501-36.dwg FIG 37

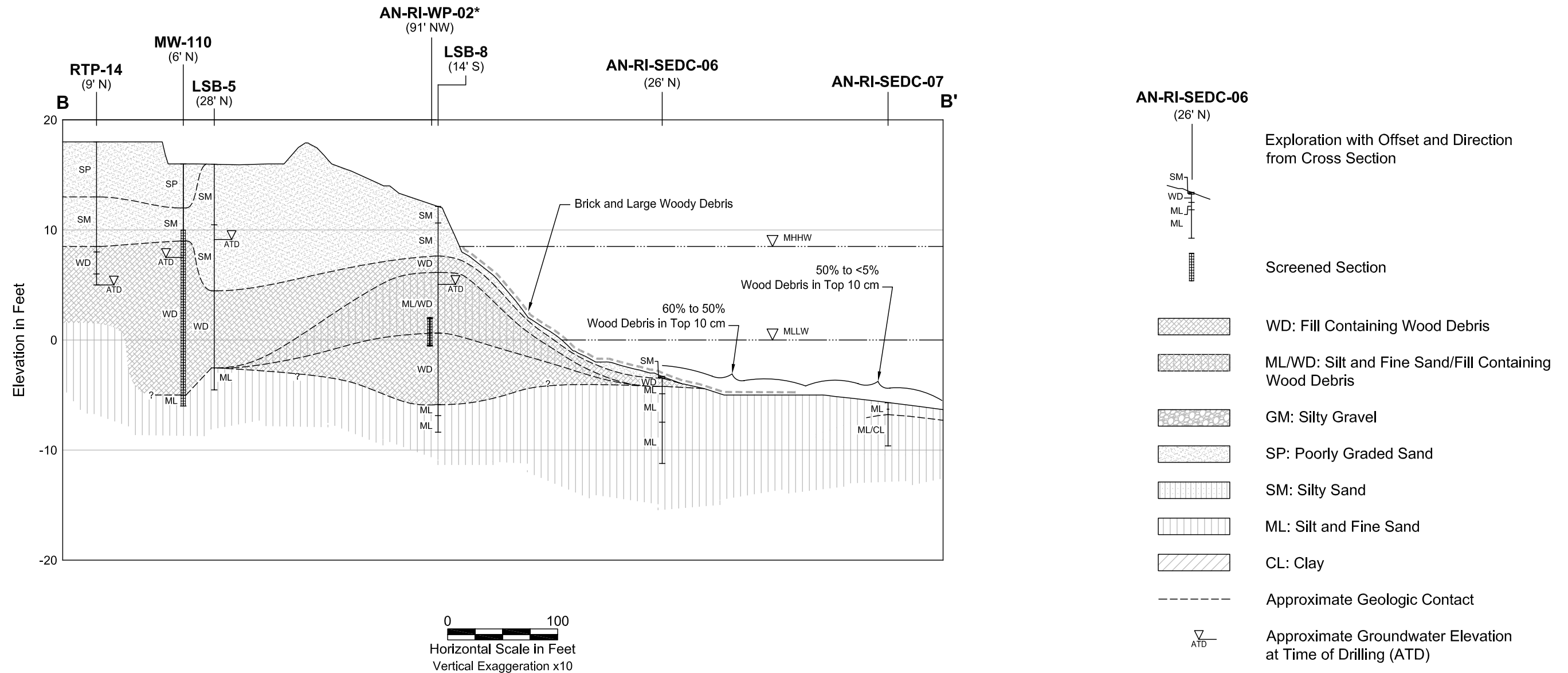
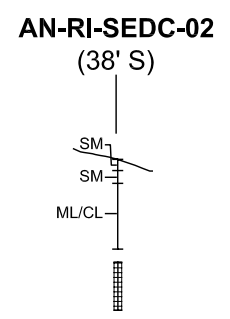
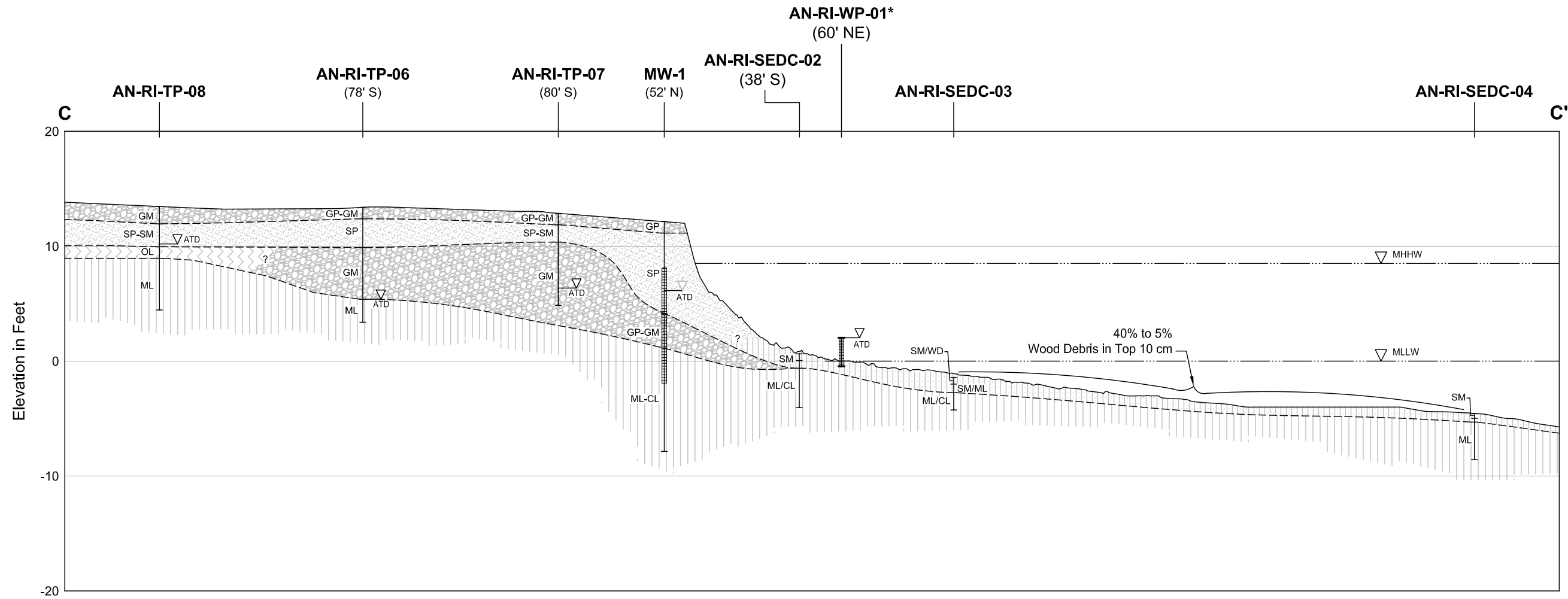


Figure 15
Cross Sections B-B'
Former Scott Paper Mill

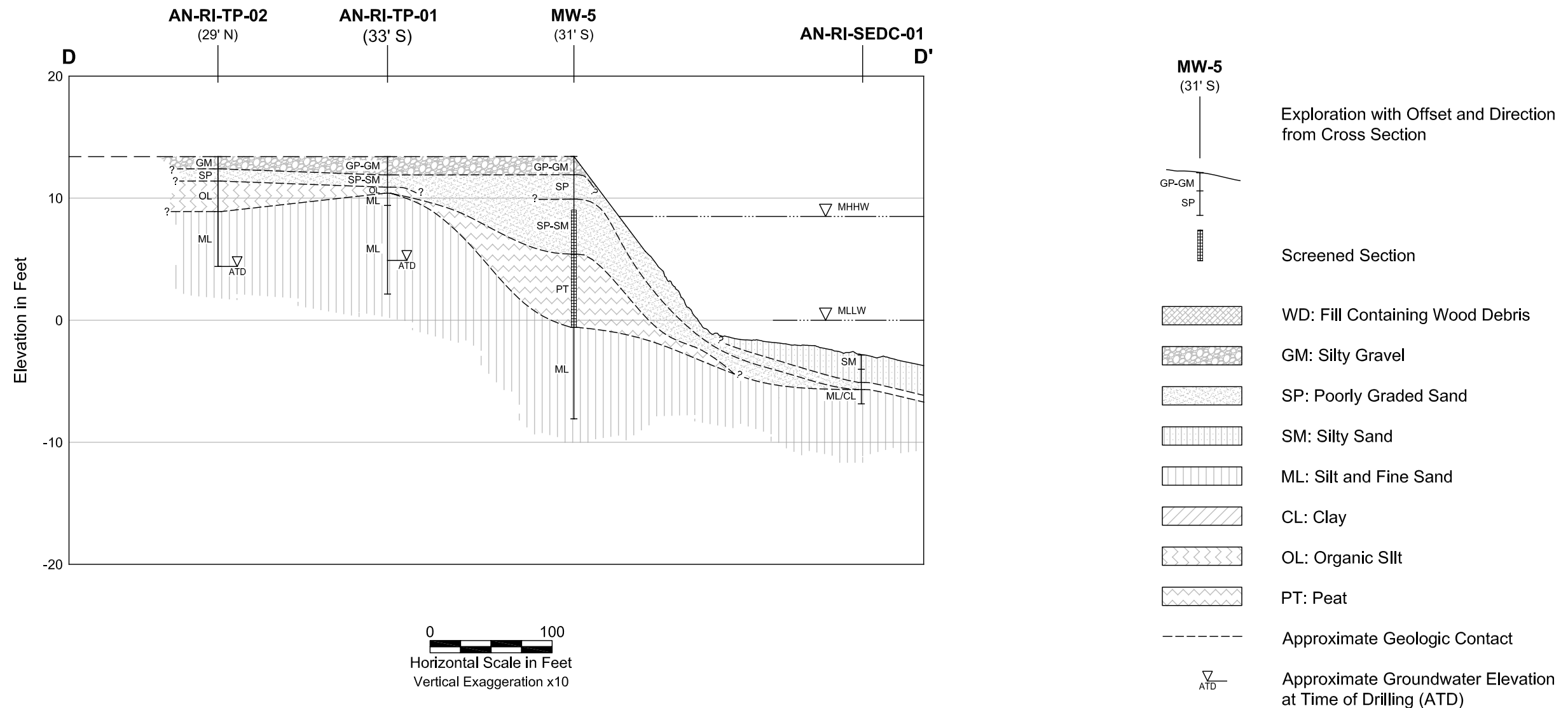
Jul 27, 2006 11:34am cdavidson K:\Jobs\000105-01\00010501-36.dwg FIG 38



- WD: Fill Containing Wood Debris
- GM: Silty Gravel
- SP: Poorly Graded Sand
- SM: Silty Sand
- OL: Organic Silt
- ML: Silt and Fine Sand
- CL: Clay
- Approximate Geologic Contact
- Approximate Groundwater Elevation at Time of Drilling (ATD)

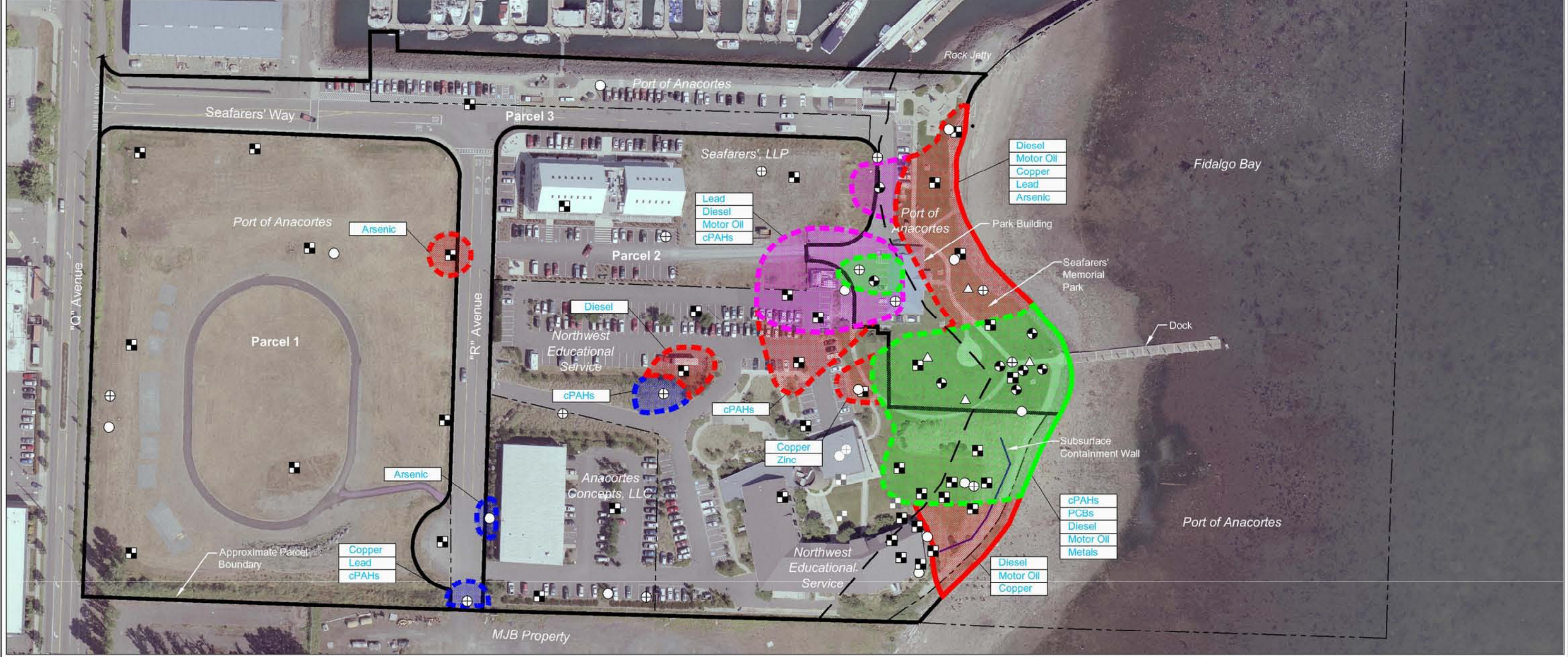
* AN-RI-WP-01 Depicted at approximate elevation. Offset is to the NE, see Figure 1 for confirmed location.

Jul 27, 2006 11:35am cdavidson K:\Jobs\000105-01\00010501-36.dwg FIG 39



Legend

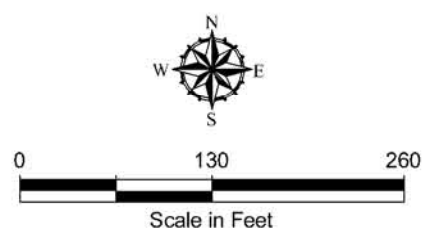
- | | | |
|---|--|--|
| ⊕ Soil Boring Location (Pre 2004) | — Cleanup Parcel Boundary | Areas of Proposed Remedial Excavation (Dashed where Uncertain) |
| ■ Test Pit Location (Pre 2004) | - - - Property Ownership Boundary (overlies property border) | Limit of Excavation from 0 to 6' BGS |
| △ Surface Soil Sample Location (2005) | Diesel Constituent Exceeding Cleanup Level | Limit of Excavation from 0 to 10' BGS |
| ⊙ Uplands Area RI Soil Boring Location (2004) | D/F Dioxins and Furans | Limit of Excavation from 0 to 12' BGS |
| ○ Uplands Area RI Monitoring Well Location (2004) | cPAHs Carcinogenic Polycyclic Aromatic Hydrocarbons | Limit of Excavation from 0 to 15' BGS |
| — Shoreline Sediment Protection Buffer Zone | PCBs Polychlorinated Biphenyls | |



C:\DOCUMENTS AND SETTINGS\GGLADDEN\DESKTOP\SEA\FS-18.DWG\TAB:FS-18 MODIFIED BY GGLADDEN ON AUG 13, 2008 - 16:28

Notes

1. The locations of all features shown are approximate.
2. This drawing is for information purposes. It is intended to assist in showing features discussed in an attached document. GeoEngineers, Inc. can not guarantee the accuracy and content of electronic files. The master file is stored by GeoEngineers, Inc. and will serve as the official record of this communication. Reference: AutoCAD drawing entitled "ES-4, Port Uplands Area Preliminary Soil Cleanup Level Exceedance Locations (0-2 ft BGS)", dated 9/18/2006, provided by Landau Associates. Base map source: Port of Anacortes, 2007.



Alternative PUA-1	
Scott Paper Mill Anacortes, Washington	
GEOENGINEERS	Figure 18

Legend

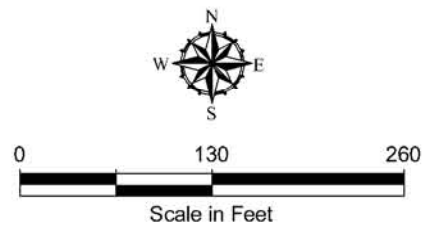
- | | | |
|---|--|--|
| ⊕ Soil Boring Location (Pre 2004) | — Cleanup Parcel Boundary | Areas of Proposed Remedial Excavation (Dashed where Uncertain) |
| ■ Test Pit Location (Pre 2004) | - - - Property Ownership Boundary (overlies property border) | Limit of Excavation from 0 to 6' BGS |
| △ Surface Soil Sample Location (2005) | Diesel Constituent Exceeding Cleanup Level | Limit of Excavation from 0 to 10' BGS |
| ⊙ Uplands Area RI Soil Boring Location (2004) | D/F Dioxins and Furans | Limit of Excavation from 0 to 12' BGS |
| ○ Uplands Area RI Monitoring Well Location (2004) | cPAHs Carcinogenic Polycyclic Aromatic Hydrocarbons | Limit of Excavation from 0 to 15' BGS |
| — Shoreline Sediment Protection Buffer Zone | PCBs Polychlorinated Biphenyls | |



C:\DOCUMENTS AND SETTINGS\GGLADDEN\DESKTOP\SEAFARERS-19.DWG\TAB.FS-19 MODIFIED BY GGLADDEN ON AUG 13, 2008 - 16:18

Notes

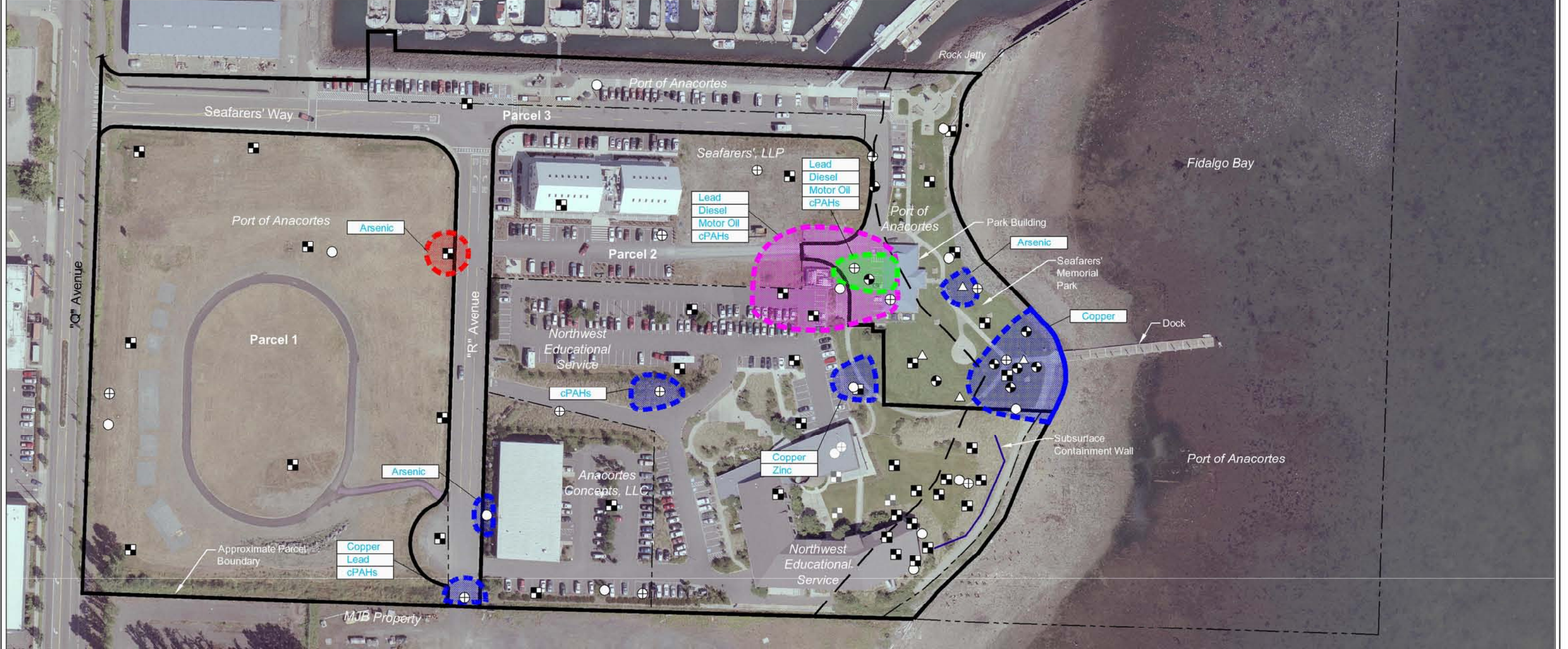
1. The locations of all features shown are approximate.
2. This drawing is for information purposes. It is intended to assist in showing features discussed in an attached document. GeoEngineers, Inc. can not guarantee the accuracy and content of electronic files. The master file is stored by GeoEngineers, Inc. and will serve as the official record of this communication. Reference: AutoCAD drawing entitled "ES-4, Port Uplands Area Preliminary Soil Cleanup Level Exceedance Locations (0-2 ft BGS)", dated 9/18/2006, provided by Landau Associates. Base map source: Port of Anacortes, 2007.



Alternative PUA-2	
Scott Paper Mill Anacortes, Washington	
GEOENGINEERS	Figure 19

Legend

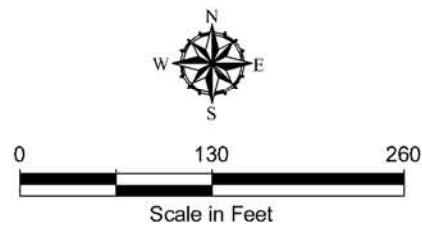
- | | | |
|---|--|--|
| ⊕ Soil Boring Location (Pre 2004) | — Cleanup Parcel Boundary | Areas of Proposed Remedial Excavation (Dashed where Uncertain) |
| ■ Test Pit Location (Pre 2004) | - - - Property Ownership Boundary (overlies property border) | Limit of Excavation from 0 to 6' BGS |
| △ Surface Soil Sample Location (2005) | Diesel Constituent Exceeding Cleanup Level | Limit of Excavation from 0 to 10' BGS |
| ⊙ Uplands Area RI Soil Boring Location (2004) | D/F Dioxins and Furans | Limit of Excavation from 0 to 12' BGS |
| ○ Uplands Area RI Monitoring Well Location (2004) | cPAHs Carcinogenic Polycyclic Aromatic Hydrocarbons | Limit of Excavation from 0 to 15' BGS |
| — Shoreline Sediment Protection Buffer Zone | PCBs Polychlorinated Biphenyls | |



C:\DOCUMENTS AND SETTINGS\GGLADDEN\DESKTOP\SEA\FS-20.DWG\TAB:FS-20 MODIFIED BY GGLADDEN ON AUG 13, 2008 - 16:33

Notes

1. The locations of all features shown are approximate.
2. This drawing is for information purposes. It is intended to assist in showing features discussed in an attached document. GeoEngineers, Inc. can not guarantee the accuracy and content of electronic files. The master file is stored by GeoEngineers, Inc. and will serve as the official record of this communication. Reference: AutoCAD drawing entitled "ES-4, Port Uplands Area Preliminary Soil Cleanup Level Exceedance Locations (0-2 ft BGS)", dated 9/18/2006, provided by Landau Associates. Base map source: Port of Anacortes, 2007.



Alternative PUA-3

Scott Paper Mill
Anacortes, Washington



Figure 20

Legend

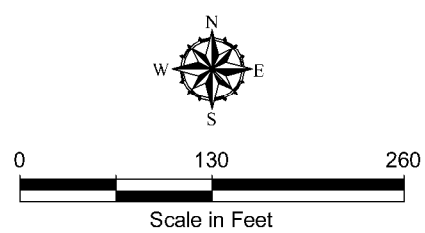
- | | | |
|---|--|--|
| ⊕ Soil Boring Location (Pre 2004) | — Cleanup Parcel Boundary | Areas of Proposed Remedial Excavation (Dashed where Uncertain) |
| ■ Test Pit Location (Pre 2004) | - - - Property Ownership Boundary (overlies property border) | Limit of Excavation from 0 to 6' BGS |
| △ Surface Soil Sample Location (2005) | Diesel Constituent Exceeding Cleanup Level | Limit of Excavation from 0 to 10' BGS |
| ⊙ Uplands Area RI Soil Boring Location (2004) | D/F Dioxins and Furans | Limit of Excavation from 0 to 12' BGS |
| ○ Uplands Area RI Monitoring Well Location (2004) | cPAHs Carcinogenic Polycyclic Aromatic Hydrocarbons | Limit of Excavation from 0 to 15' BGS |
| — Shoreline Sediment Protection Buffer Zone | PCBs Polychlorinated Biphenyls | |



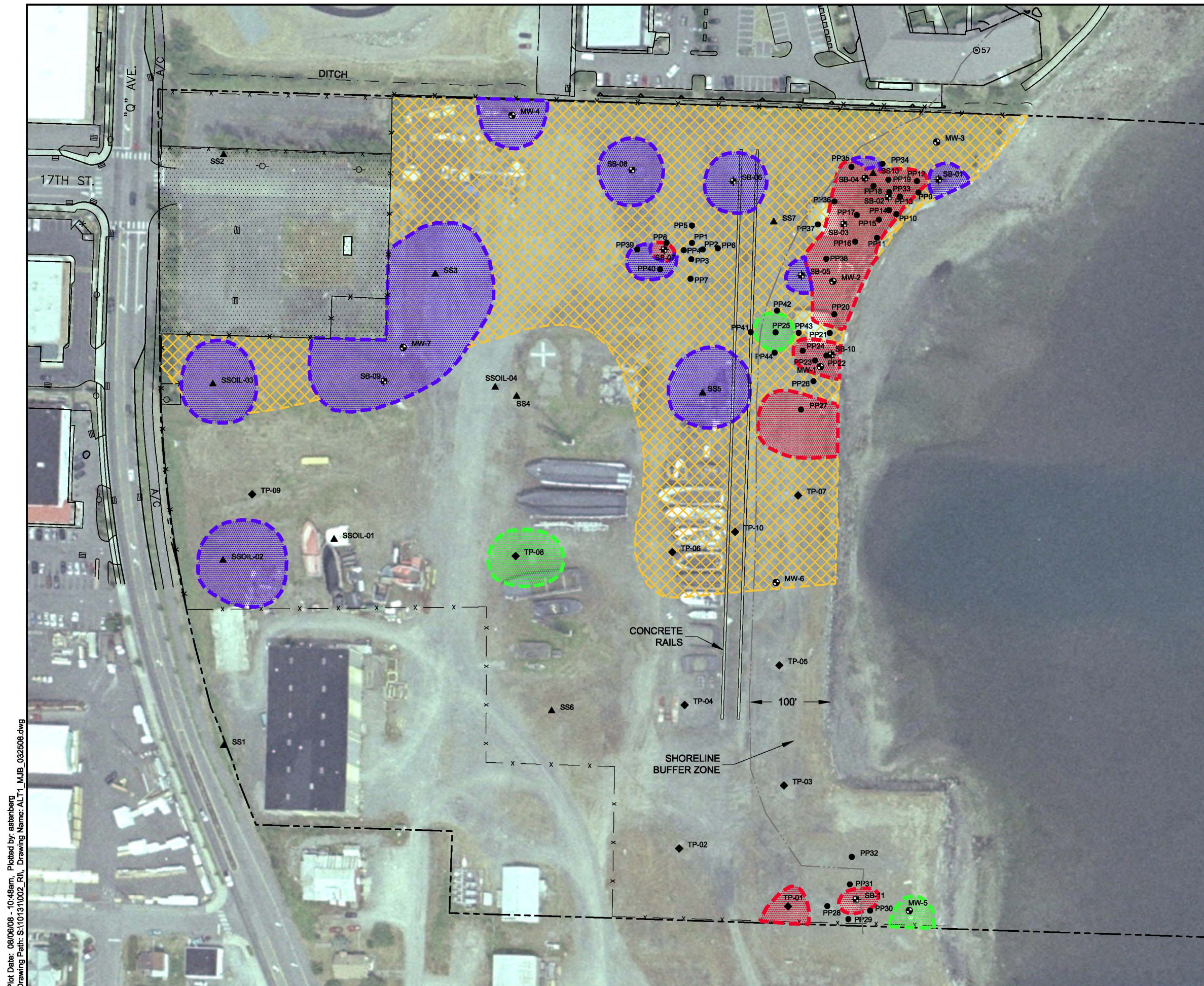
C:\DOCUMENTS AND SETTINGS\GGLADDEN\DESKTOP\SEA\F5-21.DWG\TAB\F5-21 MODIFIED BY 6GLADDEN ON AUG 13, 2008 - 16:35

Notes

1. The locations of all features shown are approximate.
2. This drawing is for information purposes. It is intended to assist in showing features discussed in an attached document. GeoEngineers, Inc. can not guarantee the accuracy and content of electronic files. The master file is stored by GeoEngineers, Inc. and will serve as the official record of this communication. Reference: AutoCAD drawing entitled "ES-4, Port Uplands Area Preliminary Soil Cleanup Level Exceedance Locations (0-2 ft BGS)", dated 9/18/2006, provided by Landau Associates. Base map source: Port of Anacortes, 2007.



Alternative PUA-4	
Scott Paper Mill Anacortes, Washington	
GEOENGINEERS	Figure 21

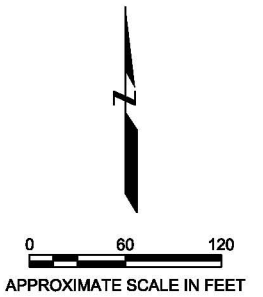


LEGEND

- Monitoring Well Location
- Push Probe Soil Sample Location
- ◆ Test Pit Sample Location
- ▲ Soil Sample Location
- ⊕ Soil Boring Location
- Property Line
- x-x- Fence Line
- x-x- Proposed Security Fence
- ▨ Parking Area

Areas of Proposed Remediation Excavation

- ▨ Anticipated Limit of Excavation from 0 to 2' BGS
- ▨ Anticipated Limit of Excavation from 0 to 6' BGS
- ▨ Anticipated Limit of Excavation from 0 to 15' BGS
- ▨ Potential Upper Limit of Excavation from 0 to 2' BGS



**ALTERNATIVE MJB-1
MJB North Area
Anacortes, Washington**

By: APS Date: 08/06/08 Project No. 10131



Plot Date: 08/06/08 - 10:48am, Plotted by: astenberg
Drawing Path: S:\10\13\1002_RL, Drawing Name: ALT1_MJB_032508.dwg



LEGEND

- Monitoring Well Location
- Push Probe Soil Sample Location
- ◆ Test Pit Sample Location
- ▲ Soil Sample Location
- ⊕ Soil Boring Location
- Property Line
- x-x- Fence Line
- x-x- Proposed Security Fence
- ▨ Parking Area

Areas of Proposed Remediation

- ▨ Anticipated Limit of Excavation from 0 to 2' BGS
- ▨ Anticipated Limit of Excavation from 0 to 6' BGS
- ▨ Anticipated Limit of Homogenization from 0 to 4' BGS
- ▨ Potential Upper Limit of Homogenization from 0 to 4' BGS
- ▨ Potential Upper Limit of Excavation from 0 to 2' BGS

Plot Date: 08/06/08 - 1:39pm, Plotted by: astenberg
 Drawing Path: S:\10\13\1002_RL, Drawing Name: ALT2_MJB_032508.dwg

ALTERNATIVE MJB-2
MJB North Area
Anacortes, Washington

By: APS Date: 08/06/08 Project No. 10131



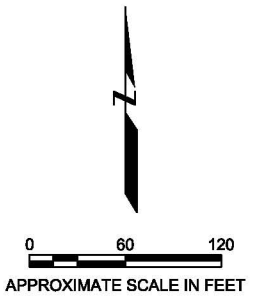


LEGEND

- Monitoring Well Location
- Push Probe Soil Sample Location
- ◆ Test Pit Sample Location
- ▲ Soil Sample Location
- ⊕ Soil Boring Location
- Property Line
- x-x- Fence Line
- x-x- Proposed Security Fence
- ▨ Parking Area

Areas of Proposed Remedial Excavation

- ▨ Anticipated Limit of Excavation from 0 to 2' BGS
- ▨ Anticipated Limit of Excavation from 0 to 6' BGS
- ▨ Anticipated Limit of Asphalt Cover
- ▨ Potential Upper Limit of Asphalt Cover
- ▨ Potential Upper Limit of Excavation from 0 to 2' BGS



**ALTERNATIVE MJB-3
MJB North Area
Anacortes, Washington**

By: APS Date: 08/06/08 Project No. 10131

Plot Date: 08/06/08 - 1:24pm, Plotted by: astenberg
Drawing Path: S:\10\13\1002_RL, Drawing Name: ALT3_MJB_032508.dwg

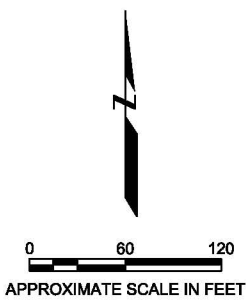


LEGEND

- Monitoring Well Location
- Push Probe Soil Sample Location
- ◆ Test Pit Sample Location
- ▲ Soil Sample Location
- ⊕ Soil Boring Location
- Property Line
- x-x- Fence Line
- x-x- Proposed Security Fence
- ▨ Parking Area

Areas of Proposed Remediation Excavation

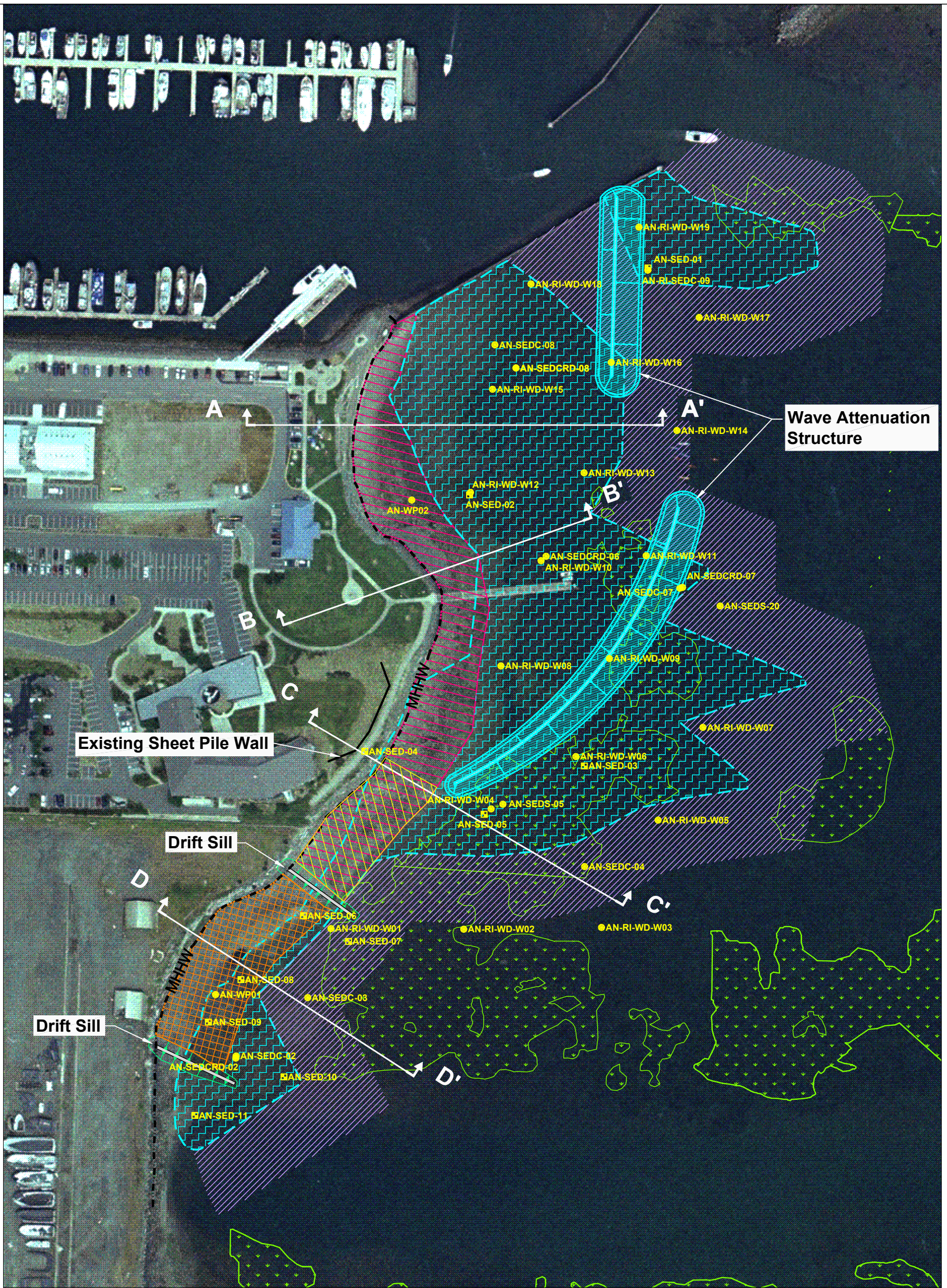
- ▨ Anticipated Limit of Excavation from 0 to 2' BGS
- ▨ Anticipated Limit of Excavation from 0 to 6' BGS
- ▨ Anticipated Limit of Excavation from 0 to 10' BGS
- ▨ Anticipated Limit of Homogenization from 0 to 4' BGS
- ▨ Potential Upper Limit of Homogenization from 0 to 4' BGS
- ▨ Potential Upper Limit of Excavation from 0 to 2' BGS


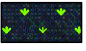






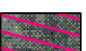
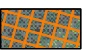



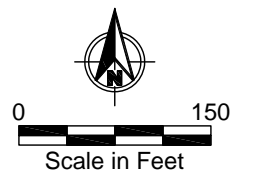
**ALTERNATIVE MJB-4
MJB North Area
Anacortes, Washington**

By: APS Date: 08/06/08 Project No. 10131

Plot Date: 08/06/08 - 1:46pm. Plotted by: astenberg
Drawing Path: S:\10\131002_RL\ Drawing Name: ALT4_MJB_080508.dwg



-  6-inch Sand Cover Placed over Anticipated Dredging Residuals
-  Eelgrass
-  SQS Boundary
-  Dredge and Backfill Area (2-ft-thick)
-  MHHW
-  Mean Higher High Water Line
-  AN-RI-WD-W03
-  Sample Location and I.D.
-  Dredge and Cap Area (3-ft-thick Sand and Gravel Cap)
-  Dredge and Cap Area (4-ft-thick Armored Cap)
-  Dredge and Cap Area (2-ft-thick Armored Cap)



Aug 07, 2008 8:55am heriksen K:\Jobs\000105-Kimberly Clark\000105-01\00010501-51.dwg F26

Figure 26
Plan View Marine Alternative M-1
Former Scott Paper Mill

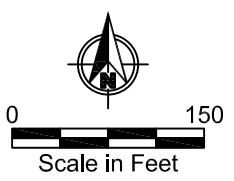
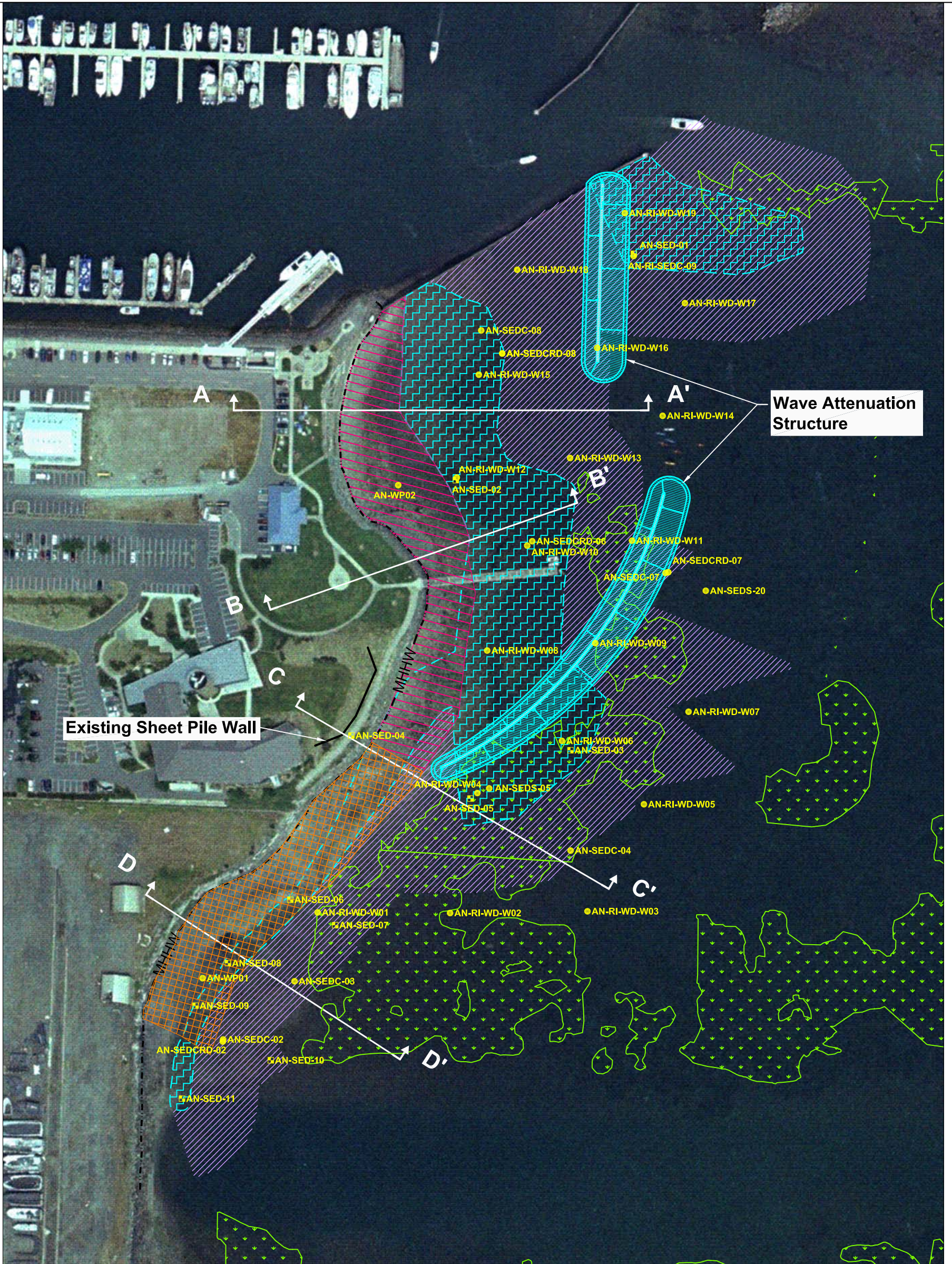


Figure 27
Plan View Marine Alternative M-2
Former Scott Paper Mill

Aug 07, 2008 9:02am heriksen K:\Jobs\000105-Kimberly Clark\000105-01\00010501-52.dwg F28

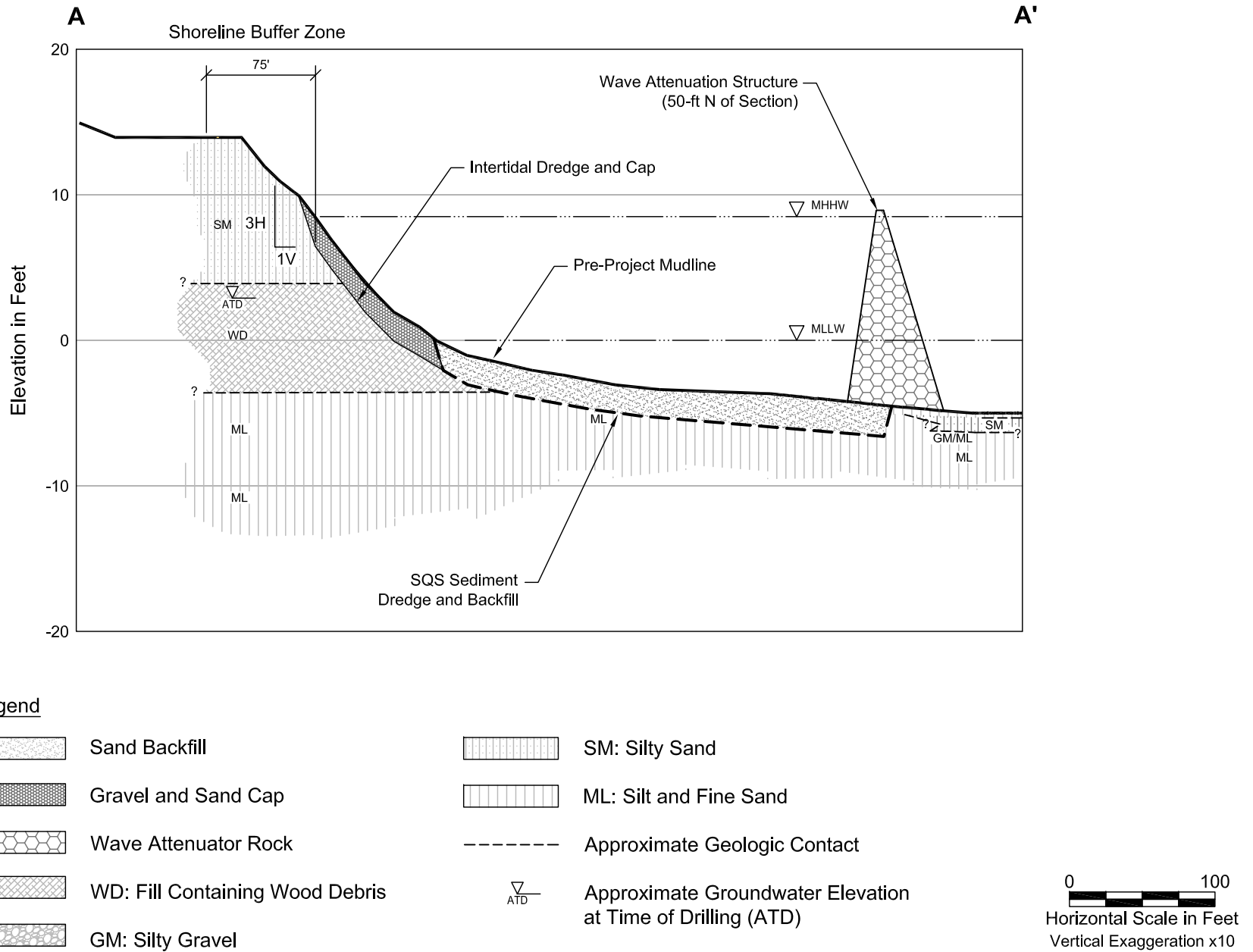
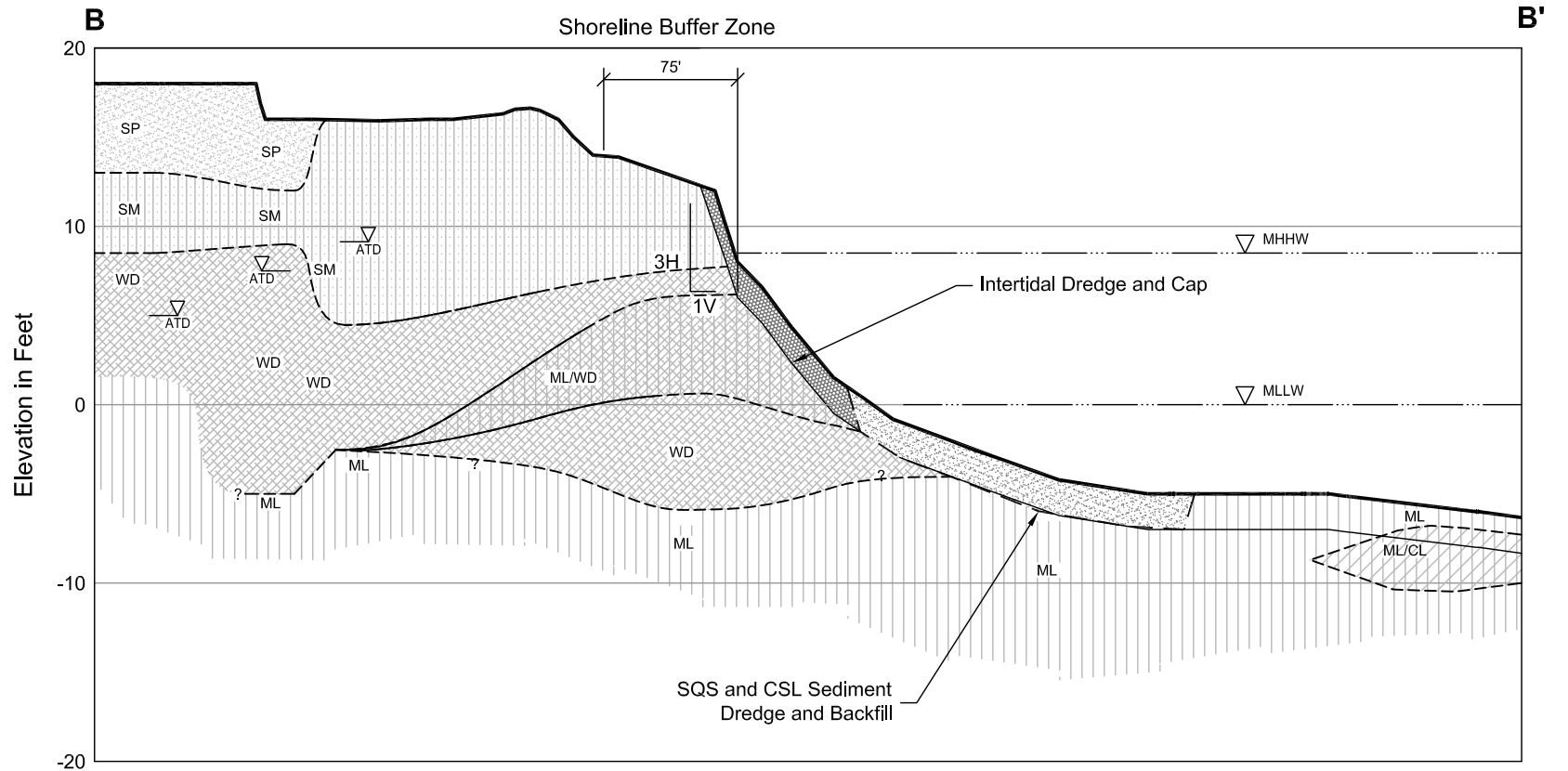


Figure 28
Cross-Section A-A': Marine Alternative M-1
Former Scott Paper Mill

Aug 07, 2008 9:03am heriksen K:\jobs\000105-Kimberly Clark\000105-01\00010501-52.dwg F29



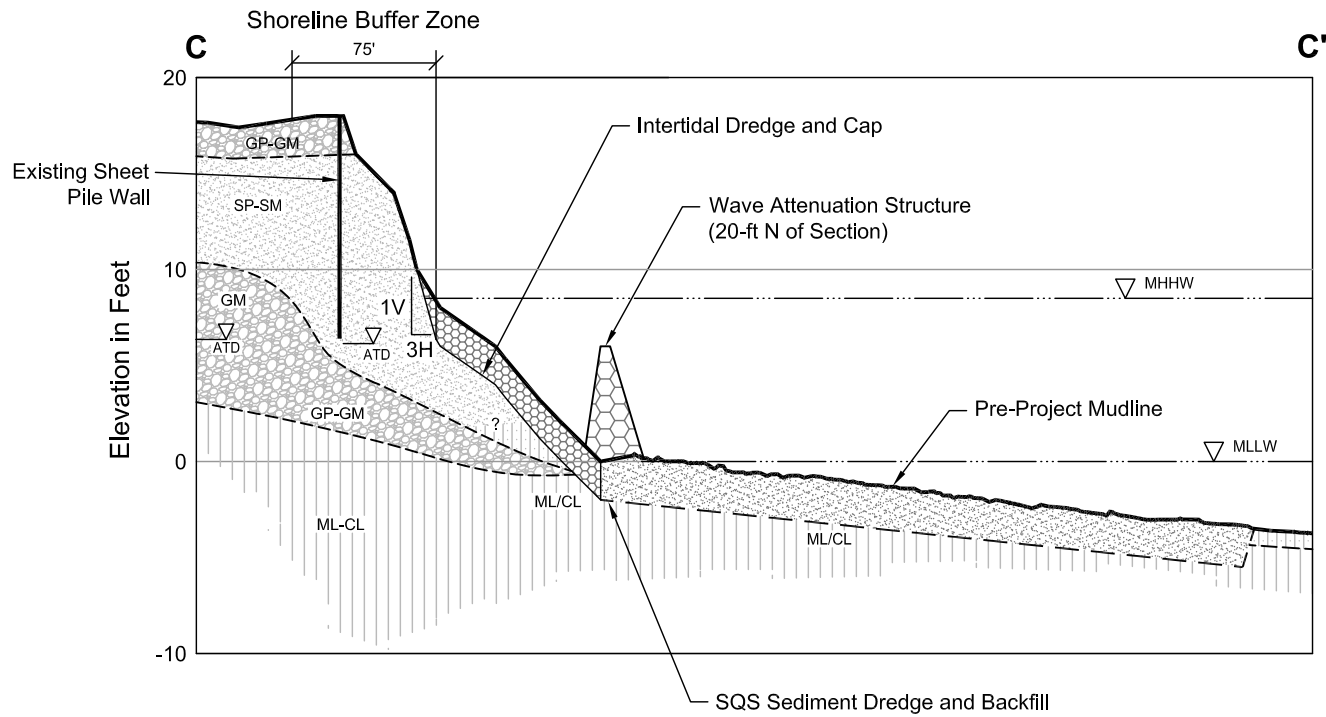
Legend

- | | |
|---|--|
| <ul style="list-style-type: none"> Sand Backfill Gravel and Sand Cap WD: Fill Containing Wood Debris ML/WD: Silt and Fine Sand/Fill Containing Wood Debris SP: Poorly Graded Sand | <ul style="list-style-type: none"> SM: Silty Sand ML: Silt and Fine Sand CL: Clay Approximate Geologic Contact Approximate Groundwater Elevation at Time of Drilling (ATD) |
|---|--|



Figure 29
Cross-Section B-B': Marine Alternatives M-1 and M-2
Former Scott Paper Mill

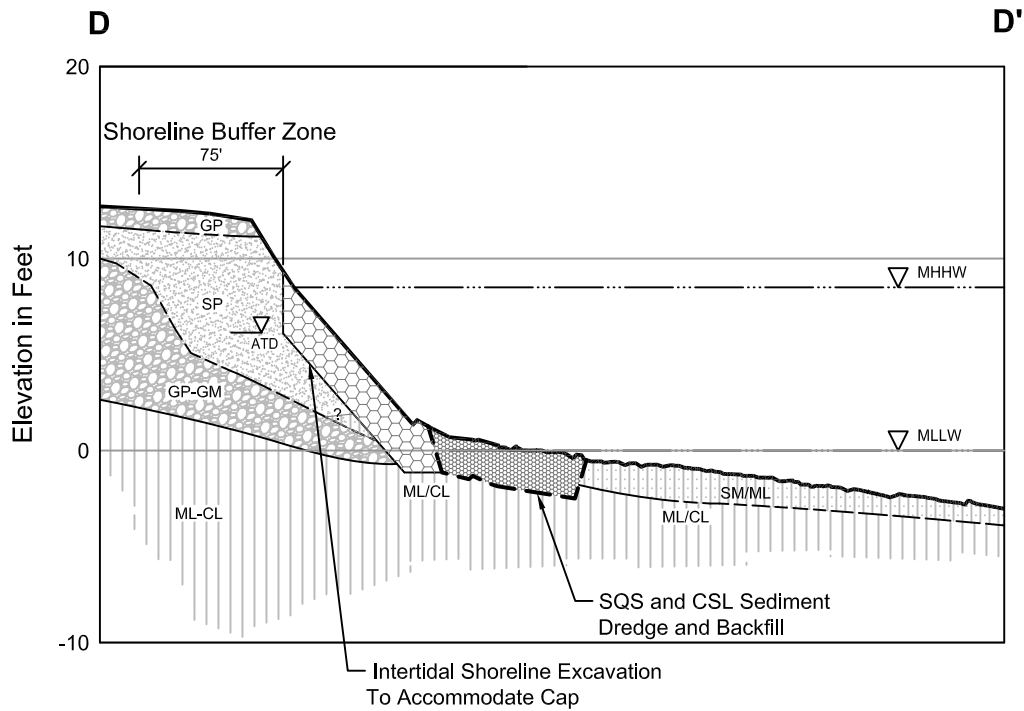
Aug 07, 2008 9:04am heriksen K:\Jobs\000105-Kimberly Clark\000105-01\00010501-52.dwg F30




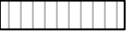

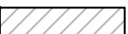


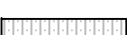
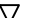


Legend

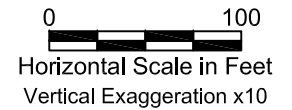
- | | | | |
|--|---------------------------------|--|---|
| | Sand Backfill | | Wave Attenuator Rock |
| | WD: Fill Containing Wood Debris | | ML: Silt and Fine Sand |
| | GM: Silty Gravel | | CL: Clay |
| | SP: Poorly Graded Sand | | Approximate Geologic Contact |
| | SM: Silty Sand | | Approximate Groundwater Elevation at Time of Drilling (ATD) |
| | Gravel Cap | | |

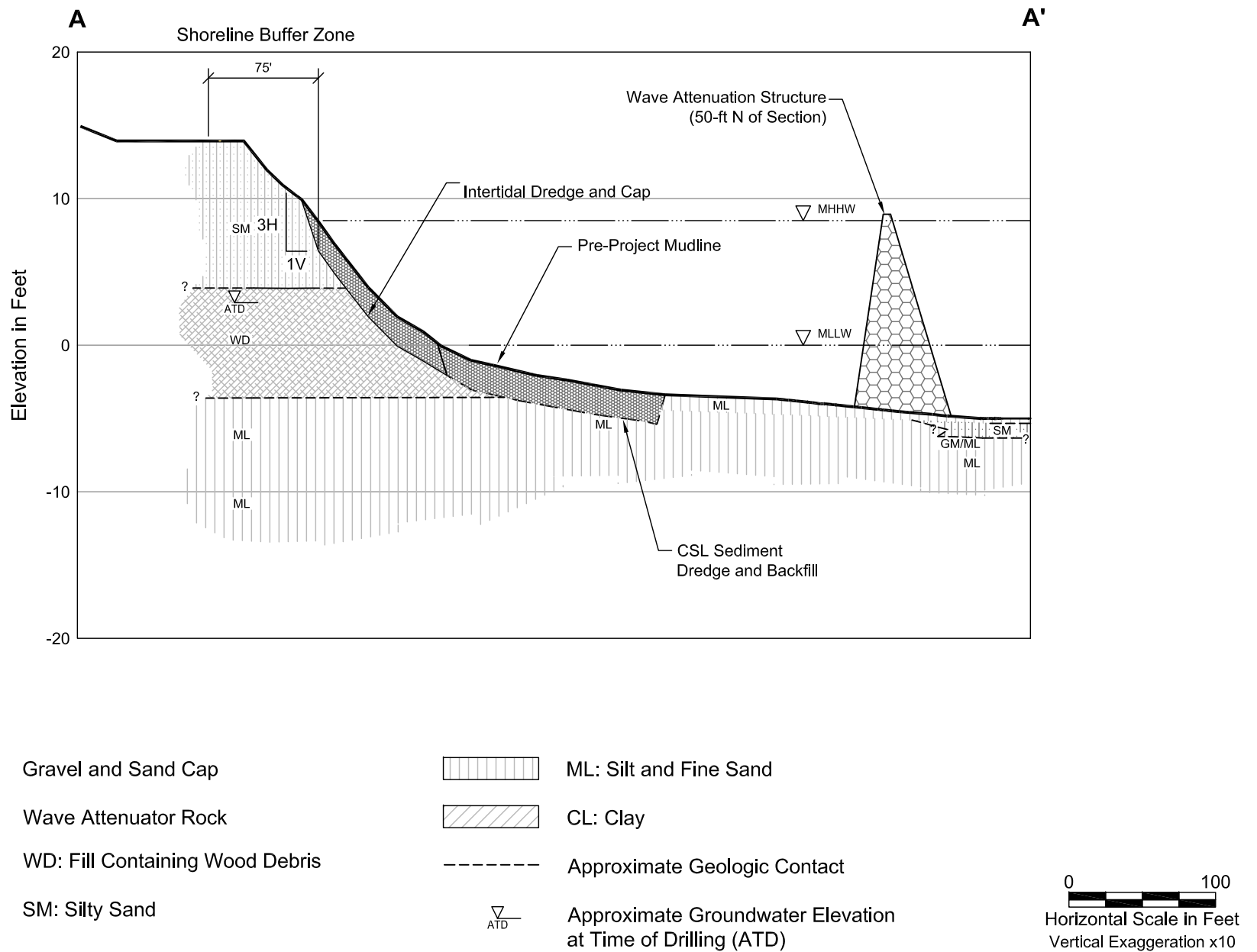




Legend

- | | | | |
|---|---------------------------------|--|---|
|  | WD: Fill Containing Wood Debris |  | ML: Silt and Fine Sand |
|  | GM: Silty Gravel |  | CL: Clay |
|  | SP: Poorly Graded Sand |  | Approximate Geologic Contact |
|  | SM: Silty Sand |  | Approximate Groundwater Elevation at Time of Drilling (ATD) |
|  | OL: Organic Silt | | |
|  | Armored Cap | | |





Aug 07, 2008 9:06am heriksen K:\Jobs\000105-Kimberly Clark\000105-01\00010501-52.dwg F33

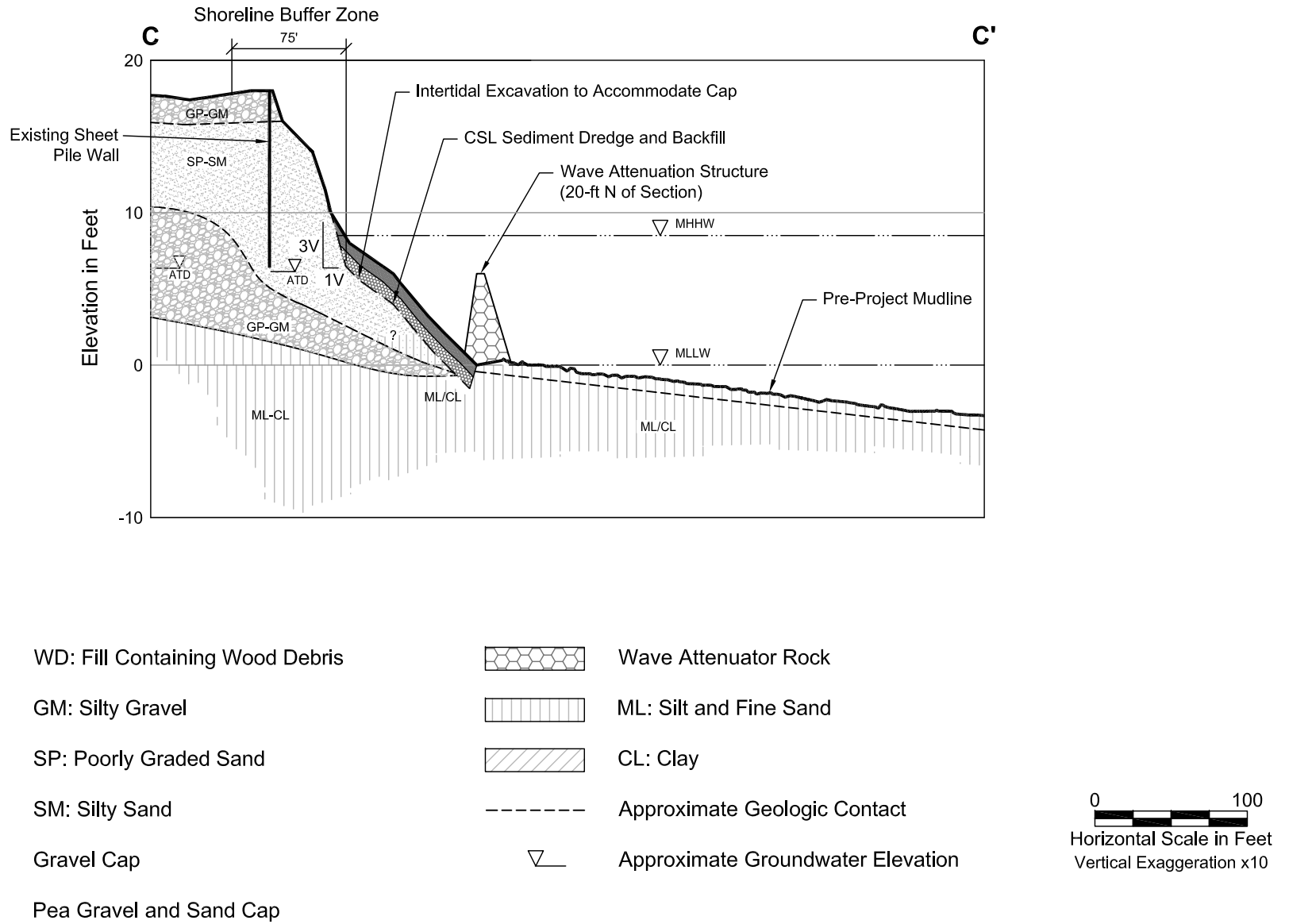


Figure 33
Cross-Section C-C': Marine Alternative M-2
Former Scott Paper Mill