



DEPARTMENT OF
ECOLOGY
State of Washington

Public Participation Plan

Time Oil Bulk Terminal Cleanup Site 2787 W. Commodore Way, Seattle WA

Facility Site ID: 75486194
Cleanup Site ID: 14604

July 2020

Publication and Contact Information

This plan is available on the Department of Ecology's website at:
[Ecology's Time Oil Bulk Terminal Web Page](#)

For more information contact:

Northwest Regional Office
3190 160th Ave SE
Bellevue, WA 98008

Washington State Department of Ecology – [Department of Ecology Homepage](#)

- Headquarters, Olympia 360-407-6000
- Northwest Regional Office, Bellevue 425-649-7000
- Southwest Regional Office, Olympia 360-407-6300
- Central Regional Office, Union Gap 509-575-2490
- Eastern Regional Office, Spokane 509-329-3400

To request ADA accommodation including materials in a format for the visually impaired, call Ecology at (360) 407-6831 or visit [Department of Ecology's Accessibility Homepage](#). People with impaired hearing may call Washington Relay Service at 711. People with speech disability may call TTY at 877-833-6341.

Public Participation Plan

Time Oil Bulk Terminal

Toxics Cleanup Program
Northwest Region
Washington State Department of Ecology
Bellevue, Washington

This page is purposely left blank

Table of Contents

Public Involvement in Contamination Cleanup	1
Site contacts	1
Ecology	1
PLP	1
Public Participation Grants	2
Washington’s Cleanup Laws	2
Model Toxics Control Act (MTCA)	2,3
State Environmental Policy Act.....	4
Site History	4
Contamination.....	5
Site Parcels.....	5
Cleanup Plans.....	6
Community Profile.....	6
EPA Environmental Justice Screens of community.....	7-13
Public Participation Activities	14
How we share information with the community.....	14
Postal mailing list.....	14
Site Register	15
Newspaper display ads or legal notices	15
Email lists.....	15
Ecology’s website and social media platforms	15
Document repositories	16
Signs around the cleanup site.....	16
How to share information with us.....	16
Public comment periods.....	16
Public events	17
Plan Amendments	17

Public Involvement in Contamination Cleanup

The Washington State Department of Ecology (Ecology) developed this Public Participation Plan (Plan) in cooperation with TOC Seattle Terminal, LLC, a prospective purchaser seeking an ownership interest in the Time Oil Bulk Terminal Cleanup Site (Site). TOC Seattle Terminal, LLC intends to purchase, clean up, and redevelop four parcels that make up a portion of the Site. The parcels associated with this purchase are referred to herein as the Property. The purpose of the Plan is to promote meaningful community involvement during cleanup.

This Plan describes ways Ecology will inform the public about contamination investigations and cleanup options throughout the cleanup process. Ecology encourages the public to learn about and get involved in decision-making opportunities. It identifies how and when the public can get involved during different stages of the investigation and cleanup of contamination.

This Plan is being developed for the Prospective Purchaser Consent Decree (PPCD) and associated documents for the Site.

Site contacts

To be included in the site record, comments about the cleanup process must be submitted during comment periods. Questions and informal comments or information about the site's history are welcome anytime.

Ecology

Northwest Regional Office
3190 160th Ave SE
Bellevue WA 98008

Mark Adams, Project Manager
Mark.Adams@ecy.wa.gov
425-649-7107

Brad Petrovich, Communications
brad.petrovich@ecy.wa.gov
425-649-4486

Prospective Purchaser

TOC Seattle Terminal, LLC
2753 West 31st Street
Chicago IL 60608

Doug Ciserella, Manager
doug@cantera-group.com
773-722-9200

Allison Geiselbrecht, Consultant
Allison.Geiselbrecht@floydsnider.com
206-292-2078

Public Participation Grants

Grants may be available to neighborhood committees, non-profits, and other groups interested in the site. For contaminated sites, these funds can be used to:

- Hire an expert to help interpret technical information¹
- Conduct activities that enhance the public's understanding of, and participation in, the cleanup process

For more information about public participation grants, please contact Lynn Gooding at 360-407-6062 or lynn.gooding@ecy.wa.gov, or visit the [Public Participation Grant website](#).²

Washington's Cleanup Laws

Ecology uses the Model Toxics Control Act (MTCA) and accompanying regulations for cleanup activities. This Plan is required under MTCA, a law that passed in 1989. MTCA provides guidelines for contaminated site cleanup in Washington State and sets standards to ensure the cleanup protects human health and the environment.

Model Toxics Control Act (MTCA)

MTCA began as a grassroots citizen's initiative in 1988, and started the process of systematically cleaning up contaminated sites in Washington. Under MTCA, a current or past property owner or operator may be held responsible for cleaning up contamination on, or coming from, their property to standards that are safe for human health and the environment.

Ecology enacts MTCA and oversees cleanups in the state and issues regulations and guidance governing those cleanups. The regulations are found in [Chapter 173-340 Washington Administrative Code \(WAC\)](#).³ Ecology investigates reports of property contamination, and if the contamination is seen as a significant threat to human health or the environment, the contaminated property is placed on the Hazardous Sites List, and the cleanup process begins.

¹ Ecology currently does not have a citizen technical advisor for providing technical assistance to citizens on issues related to the investigation and cleanup of the site.

² ecology.wa.gov/About-us/How-we-operate/Grants-loans/Find-a-grant-or-loan/Public-participation-grants

³ <https://fortress.wa.gov/ecy/publications/publications/9406.pdf>

A public participation is an important part of cleanup under the MTCA process. Participation needs are assessed at each cleanup site according to the level of public interest and the degree of risk posed by the contamination. Individuals who live near the site, community groups, businesses, government, other organizations, and interested parties have the opportunity to get involved by commenting on the cleanup process. Under MTCA, the cleanup process generally includes five phases. Each phase includes an opportunity for the public to review and comment.

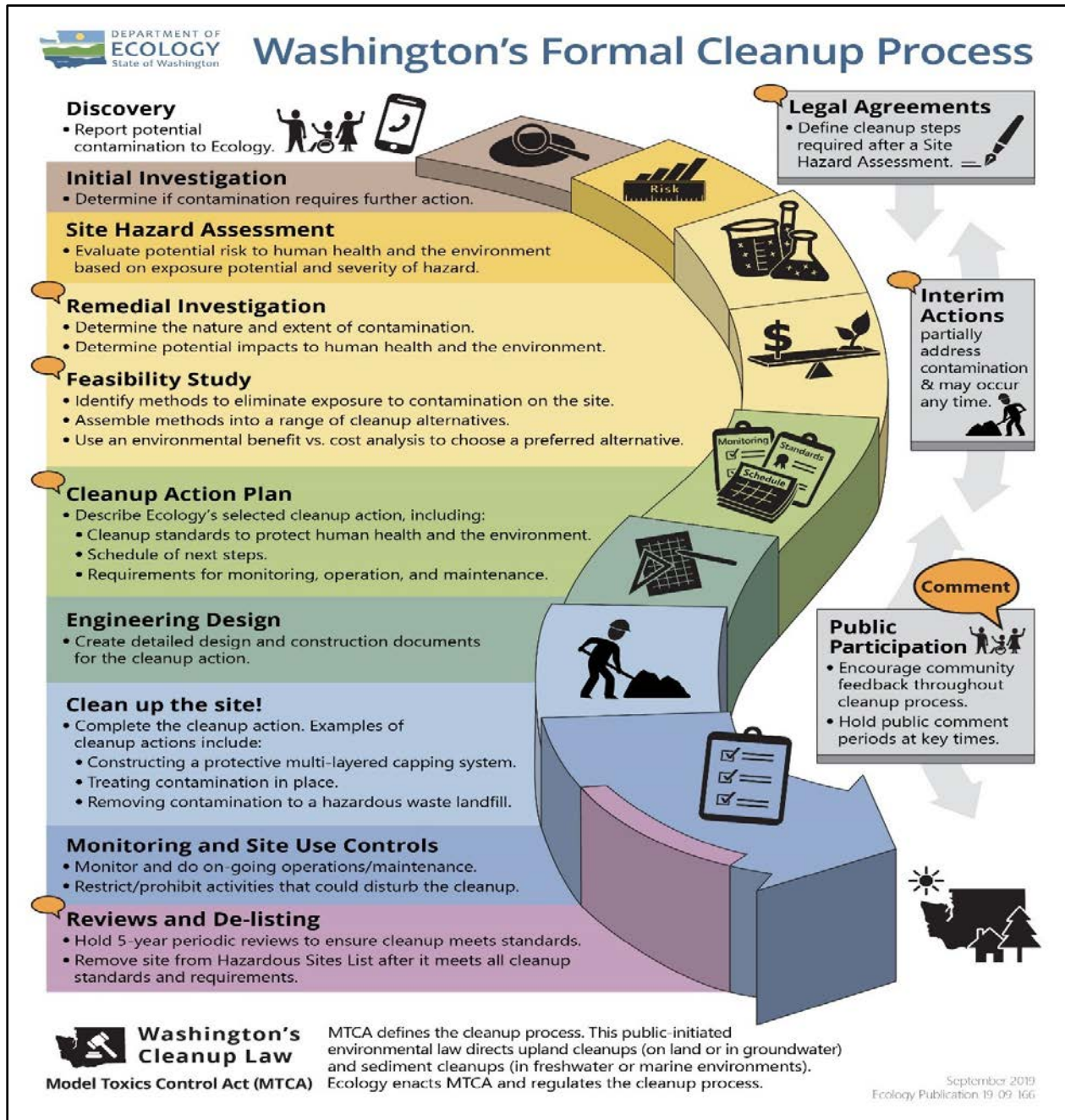


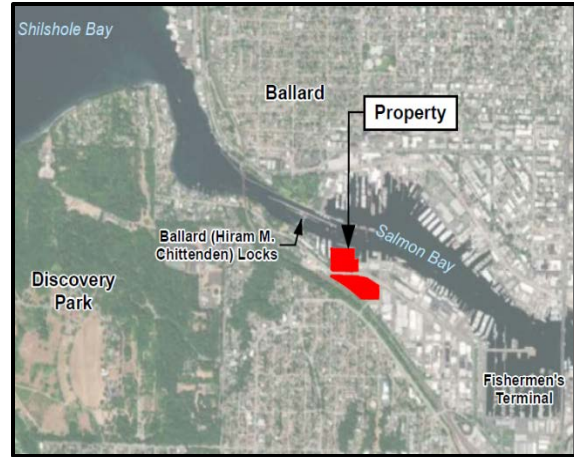
Figure 1. Steps in Washington's Cleanup Process

State Environmental Policy Act

The State Environmental Policy Act (SEPA) is followed during review and development of cleanup plans.

Site History

The Property is generally located at 2737-2805 West Commodore Way in Seattle, along the industrial waterfront area of Salmon Bay on the Lake Washington Ship Canal. It is approximately 10.4 acres in size and consists of four parcels. Time Oil began bulk fuel operations at the Property in the early 1940s, primarily to support World War II efforts. The former Time Oil Bulk Terminal supported large quantities of fuel being stored and distributed during and after the war. In later years, portions of it were leased to other parties for industrial purposes.



The historical operations and uses resulted in releases of petroleum hydrocarbons, chlorinated solvents, wood preservative, and metals into soil and groundwater on the Property and the adjacent West Commodore Way right-of-way. Several interim cleanup actions were done between 1991 and 2017 to remove some contamination. A final cleanup action is proposed now to address the remaining contamination at three of the parcels that comprise the Property, including parts of the West Commodore right-of-way.

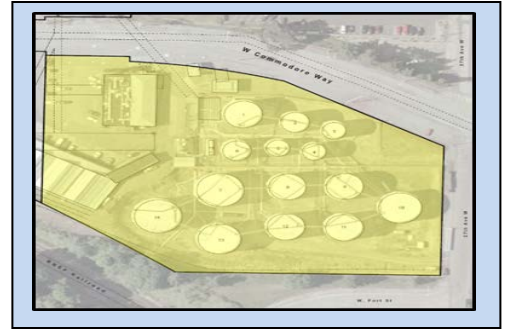


Portions of the Property, referred to as the Remedial Action Area, are subject to the proposed cleanup action plan. These parcels are identified in the figure (Figure 2) as the **Bulk Terminal**, **ASKO**, and **East Waterfront** parcels and are described on Page 3. The other parcel (West Waterfront parcel) is part of the Property to be purchased, but is not included in the Remedial Action Area. An adjacent parcel is owned by BNSF Railway Company and is a continuing source of contamination within the Site. Ecology is currently negotiating a legal agreement with BNSF for that parcel.

Bulk Terminal Parcel

Previous Uses: Bulk petroleum fuel terminal from 1941 to 2001 for distribution of various petroleum products and formulation and distribution of wood preservative.

Current Uses: Vacant office building (former Time Oil office) and warehouse space. A marine retail facility also operates on a portion of the property. All tanks and associated fueling infrastructure have been removed.



Contaminants of Concern: Gasoline, diesel, and oil petroleum hydrocarbons; benzene and other petroleum-related volatile organic compounds (VOCs); and pentachlorophenol (penta).

Proposed Cleanup Action: Remedial excavation and in situ solidification/stabilization (ISS) to remove or encapsulate contaminated soil & liquid phase petroleum; protective cap & deed restriction.

ASKO Parcel

Previous Uses: Support operations for the bulk terminal including drum storage and barreling operations, vehicle maintenance and parking, and oil storage. Between 1974 and 2017, Time Oil leased a portion of the property to various industrial/marine shops including ASKO Hydraulic Repair, later known as ASKO Industrial Repair. ASKO's hydraulic repair and machine shop included oil and solvent storage.



Current Uses: Commercial fishing marine supply store for retail sales, storage, and equipment on a portion of the property. Vacant warehouse.

Contaminants of Concern: Gasoline, diesel, & oil petroleum hydrocarbons; benzene; chlorinated solvents; metals.

Proposed Cleanup Action: Remedial excavation and ISS to remove or encapsulate contaminated soil; in situ groundwater treatment to reduce dissolved contaminants; protective cap & deed restriction.

East Waterfront Parcel

Previous uses: Fueling transport ships and other support operations for the former Time Oil Bulk Terminal including barrel transfer operations, oil quality testing, vehicle/equipment repair and maintenance, and general storage. Between 1972 and 2014 Time Oil leased portions of the property to other parties for various purposes, including a sailing and rigging business, an Icicle Seafoods boat maintenance base, and warehouse use.



Current uses: Vacant property.

Contaminants of concern: Gasoline, diesel, and oil petroleum hydrocarbons; benzene; and metals.

Proposed Cleanup Action: Remedial excavation to remove contaminated soil

Cleanup plans

As of July 20, 2020, Ecology will conduct a 30-day public comment period on the Prospective Purchaser Consent Decree, the Remedial Investigation/Feasibility Study (RI/FS), Draft Cleanup Action Plan (DCAP), State Environmental Policy Act – Determination of Non-Significance (SEPA DNS), and this Public Participation Plan. Ecology will also host an online public meeting on July 29, 2020 to present these documents and information about the Site. These documents will direct TOC Seattle Terminal, LLC to investigate contamination, suggest cleanup alternatives, and develop a cleanup action plan. Should any comments from public comment result in significant changes to these documents, the new version will be put out for a new comment period. If there are no public comments that require significant changes to the documents, they will be signed and considered final. TOC Seattle Terminal, LLC will then move ahead with the cleanup process at the Site.

Community Profile

The Environmental Protection Agency (EPA) has developed a new environmental justice (EJ) mapping and screening tool called EJSCREEN. It is based on nationally consistent data and an approach that combines environmental and demographic indicators in maps and reports. Ecology uses this information to tailor its communications to particular needs of a community, and develop services such as language translations, interpreters, and other aids for the community. See below for information about demographics in the area of the Time Oil Bulk Terminal Site in Seattle.



EJSCREEN Report (Version 2019)

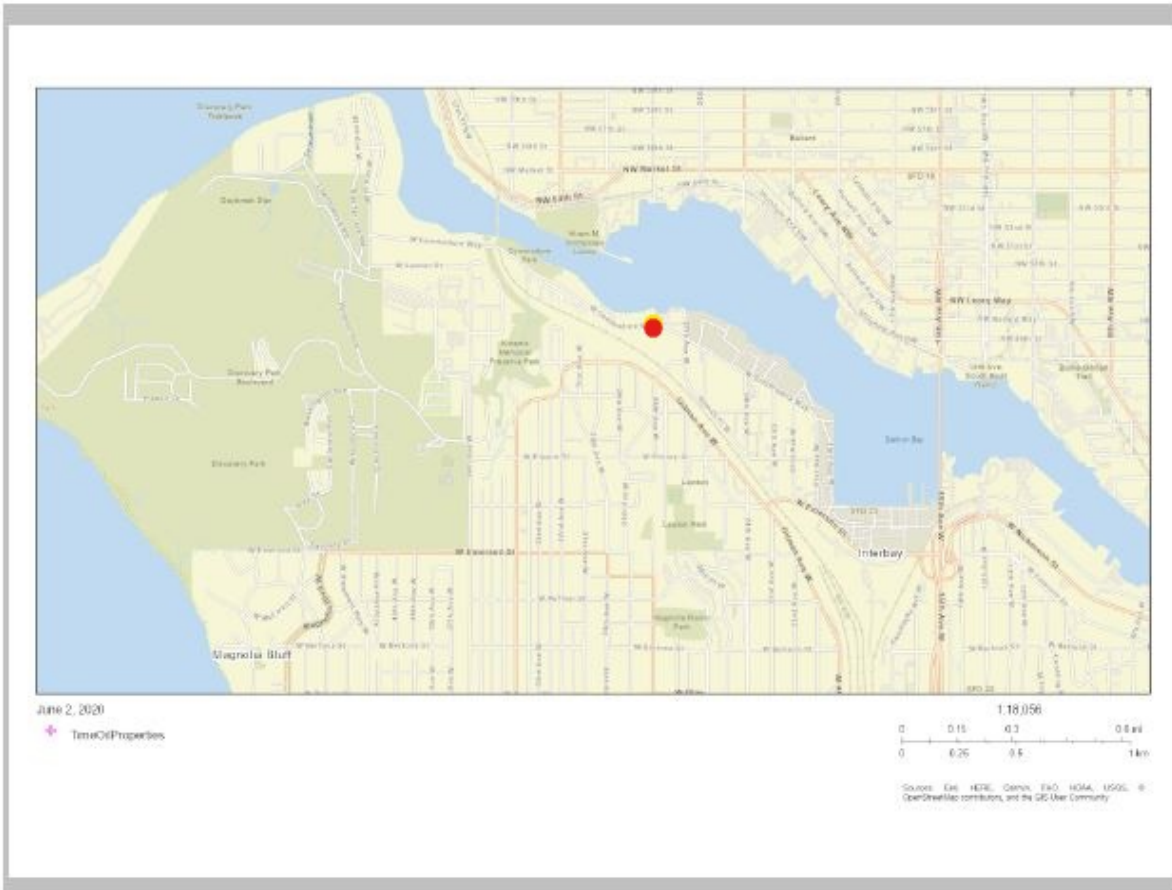


1 miles Ring Centered at 47.662683,-122.393061, WASHINGTON, EPA Region 10

Approximate Population: 23,754

Input Area (sq. miles): 3.14

TimeOilProperties



Sites reporting to EPA	
Superfund NPL	0
Hazardous Waste Treatment, Storage, and Disposal Facilities (TSDF)	5



EJSCREEN Report (Version 2019)



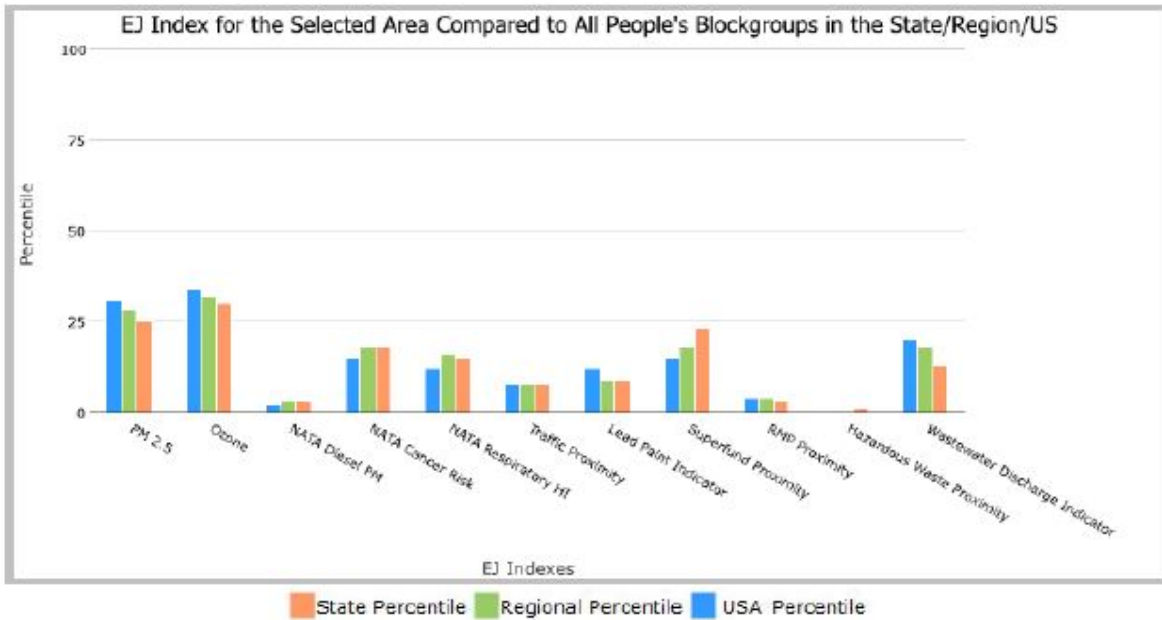
1 miles Ring Centered at 47.662683,-122.393061, WASHINGTON, EPA Region 10

Approximate Population: 23,754

Input Area (sq. miles): 3.14

TimeOilProperties

Selected Variables	State Percentile	EPA Region Percentile	USA Percentile
EJ Indexes			
EJ Index for PM2.5	25	28	31
EJ Index for Ozone	30	32	34
EJ Index for NATA* Diesel PM	3	3	2
EJ Index for NATA* Air Toxics Cancer Risk	18	18	15
EJ Index for NATA* Respiratory Hazard Index	15	16	12
EJ Index for Traffic Proximity and Volume	8	8	8
EJ Index for Lead Paint Indicator	9	9	12
EJ Index for Superfund Proximity	23	18	15
EJ Index for RMP Proximity	3	4	4
EJ Index for Hazardous Waste Proximity	1	0	0
EJ Index for Wastewater Discharge Indicator	13	18	20



This report shows the values for environmental and demographic indicators and EJSCREEN indexes. It shows environmental and demographic raw data (e.g., the estimated concentration of ozone in the air), and also shows what percentile each raw data value represents. These percentiles provide perspective on how the selected block group or buffer area compares to the entire state, EPA region, or nation. For example, if a given location is at the 95th percentile nationwide, this means that only 5 percent of the US population has a higher block group value than the average person in the location being analyzed. The years for which the data are available, and the methods used, vary across these indicators. Important caveats and uncertainties apply to this screening-level information, so it is essential to understand the limitations on appropriate interpretations and applications of these indicators. Please see EJSCREEN documentation for discussion of these issues before using reports.

June 02, 2020

1/3



EJSCREEN Report (Version 2019)



1 miles Ring Centered at 47.662683,-122.393061, WASHINGTON, EPA Region 10

Approximate Population: 23,754

Input Area (sq. miles): 3.14

TimeOilProperties

Selected Variables	Value	State Avg.	%ile in State	EPA Region Avg.	%ile in EPA Region	USA Avg.	%ile in USA
Environmental Indicators							
Particulate Matter (PM 2.5 in $\mu\text{g}/\text{m}^3$)	6.24	6.4	52	6.6	41	8.3	9
Ozone (ppb)	29.8	33.7	5	35.1	4	43	2
NATA* Diesel PM ($\mu\text{g}/\text{m}^3$)	1.24	0.583	94	0.479	95-100th	0.479	95-100th
NATA* Cancer Risk (lifetime risk per million)	39	34	73	31	80-90th	32	80-90th
NATA* Respiratory Hazard Index	0.61	0.5	85	0.46	80-90th	0.44	80-90th
Traffic Proximity and Volume (daily traffic count/distance to road)	490	600	68	500	73	750	68
Lead Paint Indicator (% Pre-1960 Housing)	0.37	0.23	76	0.23	78	0.28	68
Superfund Proximity (site count/km distance)	0.11	0.19	54	0.13	67	0.13	69
RMP Proximity (facility count/km distance)	1.4	0.63	87	0.65	86	0.74	84
Hazardous Waste Proximity (facility count/km distance)	10	1.9	96	1.5	97	4	95
Wastewater Discharge Indicator (toxicity-weighted concentration/m distance)	0.00046	50	73	31	69	14	62
Demographic Indicators							
Demographic Index	18%	29%	28	29%	27	36%	26
Minority Population	21%	30%	41	27%	48	39%	40
Low Income Population	15%	28%	27	31%	22	33%	23
Linguistically Isolated Population	2%	4%	51	3%	56	4%	53
Population With Less Than High School Education	2%	9%	19	9%	17	13%	13
Population Under 5 years of age	5%	6%	40	6%	39	6%	41
Population over 64 years of age	12%	14%	46	15%	45	15%	43

* The National-Scale Air Toxics Assessment (NATA) is EPA's ongoing, comprehensive evaluation of air toxics in the United States. EPA developed the NATA to prioritize air toxics, emission sources, and locations of interest for further study. It is important to remember that NATA provides broad estimates of health risks over geographic areas of the country, not definitive risks to specific individuals or locations. More information on the NATA analysis can be found at: <https://www.epa.gov/national-air-toxics-assessment>.

For additional information, see: www.epa.gov/environmentaljustice

EJSCREEN is a screening tool for pre-decisional use only. It can help identify areas that may warrant additional consideration, analysis, or outreach. It does not provide a basis for decision-making, but it may help identify potential areas of EJ concern. Users should keep in mind that screening tools are subject to substantial uncertainty in their demographic and environmental data, particularly when looking at small geographic areas. Important caveats and uncertainties apply to this screening-level information, so it is essential to understand the limitations on appropriate interpretations and applications of these indicators. Please see EJSCREEN documentation for discussion of these issues before using reports. This screening tool does not provide data on every environmental impact and demographic factor that may be relevant to a particular location. EJSCREEN outputs should be supplemented with additional information and local knowledge before taking any action to address potential EJ concerns.

June 02, 2020

3/3



EJSCREEN ACS Summary Report



Location: User-specified point center at 47.662025, -122.392816
 Ring (buffer): 1-miles radius
 Description: Time Oil

Summary of ACS Estimates	2013 - 2017
Population	23,586
Population Density (per sq. mile)	9,029
Minority Population	5,090
% Minority	22%
Households	12,681
Housing Units	13,238
Housing Units Built Before 1950	3,442
Per Capita Income	58,278
Land Area (sq. miles) (Source: SF1)	2.61
% Land Area	82%
Water Area (sq. miles) (Source: SF1)	0.57
% Water Area	18%

	2013 - 2017 ACS Estimates	Percent	MOE (±)
Population by Race			
Total	23,586	100%	589
Population Reporting One Race	22,286	94%	1,147
White	19,651	83%	567
Black	533	2%	133
American Indian	88	0%	52
Asian	1,755	7%	284
Pacific Islander	0	0%	12
Some Other Race	260	1%	99
Population Reporting Two or More Races	1,300	6%	224
Total Hispanic Population	1,653	7%	264
Total Non-Hispanic Population	21,932		
White Alone	18,495	78%	516
Black Alone	515	2%	133
American Indian Alone	67	0%	52
Non-Hispanic Asian Alone	1,755	7%	284
Pacific Islander Alone	0	0%	12
Other Race Alone	20	0%	23
Two or More Races Alone	1,081	5%	224
Population by Sex			
Male	11,694	50%	363
Female	11,891	50%	346
Population by Age			
Age 0-4	1,164	5%	123
Age 0-17	3,096	13%	260
Age 18+	20,489	87%	517
Age 65+	2,944	12%	228

Data Note: Detail may not sum to totals due to rounding. Hispanic population can be of any race.
 N/A means not available. Source: U.S. Census Bureau, American Community Survey (ACS) 2013 - 2017.



EJSCREEN ACS Summary Report



Location: User-specified point center at 47.662025, -122.392816
 Ring (buffer): 1-miles radius
 Description: Time Oil

	2013 - 2017 ACS Estimates	Percent	MOE (±)
Population 25+ by Educational Attainment			
Total	19,363	100%	416
Less than 9th Grade	169	1%	89
9th - 12th Grade, No Diploma	291	2%	97
High School Graduate	1,605	8%	141
Some College, No Degree	4,105	21%	198
Associate Degree	1,418	7%	127
Bachelor's Degree or more	13,193	68%	448
Population Age 5+ Years by Ability to Speak English			
Total	22,421	100%	548
Speak only English	19,374	86%	498
Non-English at Home ^{1,2,3,4}	3,047	14%	338
¹ Speak English "very well"	2,323	10%	230
² Speak English "well"	329	1%	104
³ Speak English "not well"	378	2%	270
⁴ Speak English "not at all"	17	0%	30
^{3,4} Speak English "less than well"	395	2%	270
^{2,3,4} Speak English "less than very well"	725	3%	270
Linguistically Isolated Households*			
Total	205	100%	134
Speak Spanish	15	7%	24
Speak Other Indo-European Languages	52	26%	39
Speak Asian-Pacific Island Languages	119	58%	133
Speak Other Languages	19	9%	35
Households by Household Income			
Household Income Base	12,681	100%	283
< \$15,000	781	6%	157
\$15,000 - \$25,000	841	7%	133
\$25,000 - \$50,000	2,014	16%	193
\$50,000 - \$75,000	2,186	17%	186
\$75,000 +	6,858	54%	341
Occupied Housing Units by Tenure			
Total	12,681	100%	283
Owner Occupied	5,069	40%	190
Renter Occupied	7,612	60%	267
Employed Population Age 16+ Years			
Total	20,856	100%	470
In Labor Force	16,140	77%	406
Civilian Unemployed in Labor Force	696	3%	142
Not In Labor Force	4,717	23%	274

Data Note: Detail may not sum to totals due to rounding. Hispanic population can be of anyrace.

N/A means not available. Source: U.S. Census Bureau, American Community Survey (ACS)

*Households in which no one 14 and over speaks English "very well" or speaks English only.



EJSCREEN ACS Summary Report



Location: User-specified point center at 47.662025, -122.392816
 Ring (buffer): 1-miles radius
 Description: Time Oil

	2013 - 2017 ACS Estimates	Percent	MOE (±)
Population by Language Spoken at Home*			
Total (persons age 5 and above)	20,655	100%	636
English	18,000	87%	604
Spanish	633	3%	133
French	167	1%	137
French Creole	N/A	N/A	N/A
Italian	N/A	N/A	N/A
Portuguese	N/A	N/A	N/A
German	279	1%	118
Yiddish	N/A	N/A	N/A
Other West Germanic	N/A	N/A	N/A
Scandinavian	N/A	N/A	N/A
Greek	N/A	N/A	N/A
Russian	N/A	N/A	N/A
Polish	N/A	N/A	N/A
Serbo-Croatian	N/A	N/A	N/A
Other Slavic	N/A	N/A	N/A
Armenian	N/A	N/A	N/A
Persian	N/A	N/A	N/A
Gujarathi	N/A	N/A	N/A
Hindi	N/A	N/A	N/A
Urdu	N/A	N/A	N/A
Other Indic	N/A	N/A	N/A
Other Indo-European	299	1%	137
Chinese	226	1%	232
Japanese	N/A	N/A	N/A
Korean	185	1%	279
Mon-Khmer, Cambodian	N/A	N/A	N/A
Hmong	N/A	N/A	N/A
Thai	N/A	N/A	N/A
Laotian	N/A	N/A	N/A
Vietnamese	49	0%	49
Other Asian	247	1%	160
Tagalog	103	0%	109
Other Pacific Island	N/A	N/A	N/A
Navajo	N/A	N/A	N/A
Other Native American	N/A	N/A	N/A
Hungarian	N/A	N/A	N/A
Arabic	19	0%	30
Hebrew	N/A	N/A	N/A
African	N/A	N/A	N/A
Other and non-specified	86	0%	91
Total Non-English	2,656	13%	875

Data Note: Detail may not sum to totals due to rounding. Hispanic population can be of any race.
 N/A means not available. Source: U.S. Census Bureau, American Community Survey (ACS) 2013 - 2017.
 *Population by Language Spoken at Home is available at the census tract summary level and up.



EJSCREEN Census 2010 Summary Report



Location: User-specified point center at 47.662025, -122.392816
 Ring (buffer): 1-miles radius
 Description: Time Oil

Summary	Census 2010
Population	19,937
Population Density (per sq. mile)	7,624
Minority Population	3,444
% Minority	17%
Households	10,913
Housing Units	12,113
Land Area (sq. miles)	2.61
% Land Area	82%
Water Area (sq. miles)	0.56
% Water Area	18%

Population by Race	Number	Percent
Total	19,937	-----
Population Reporting One Race	19,073	96%
White	17,076	86%
Black	365	2%
American Indian	142	1%
Asian	1,187	6%
Pacific Islander	47	0%
Some Other Race	255	1%
Population Reporting Two or More Races	864	4%
Total Hispanic Population	958	5%
Total Non-Hispanic Population	18,979	95%
White Alone	16,493	83%
Black Alone	347	2%
American Indian Alone	127	1%
Non-Hispanic Asian Alone	1,165	6%
Pacific Islander Alone	47	0%
Other Race Alone	47	0%
Two or More Races Alone	754	4%

Population by Sex	Number	Percent
Male	9,673	49%
Female	10,264	51%

Population by Age	Number	Percent
Age 0-4	913	5%
Age 0-17	2,499	13%
Age 18+	17,438	87%
Age 65+	2,344	12%

Households by Tenure	Number	Percent
Total	10,913	
Owner Occupied	4,852	44%
Renter Occupied	6,061	56%

Data Note: Detail may not sum to totals due to rounding. Hispanic population can be of any race.
 Source: U.S. Census Bureau, Census 2010 Summary File 1.

Public Participation Activities

Members of the public may ask questions, submit informal comments, or share site information at any time. Interested parties do not need to wait for a formal public comment period to contact Ecology.

However, to be included in the formal site record, comments about the site investigation, cleanup alternatives, or cleanups must be submitted during formal comment periods. In addition, the public is invited to review site documents before they become final. This is the most direct and influential way to learn more about the site and be involved in the cleanup's decision-making.

How we share information with the community

During specific stages of the cleanup, Ecology will mail notices about public comment periods to addresses surrounding the site. The mailing list area will vary depending on the type of contamination and where it's located, but the list will at least include addresses within a 1/4-mile radius of the site and other interested organizations and individuals. These notices will provide general information about the site, contact information for submitting comments, and times and locations of public meetings or hearings or how to request one if not yet scheduled.

Ecology may also develop documents outside of comment periods to keep the community updated on the site's status. These informational documents will be available online and at document repositories. Print copies may be mailed to the nearby community if we feel the message warrants the associated cost and resources.

Comment period notices and other site announcements may also be posted in various locations throughout the community (for example, local businesses, schools, libraries).

Postal mailing list

Ecology maintains a mailing list that includes addresses within the neighborhoods of Seattle, relevant local, state, and federal government contacts, and other interested parties.

These people receive public comment notices when draft documents are available.

We will add additional individuals, organizations, and other interested parties to the mailing list as requested. If you would like to be added to the mailing list for this site, please contact Brad Petrovich at 425-533-5537 or brad.petrovich@ecy.wa.gov.

Site Register

Public comment periods, events, and other cleanup notices are published in Ecology's [Site Register](#).⁴ To receive the *Site Register* by email, please contact Cheryl Ann Bishop at 360-407-6848 or cherylann.bishop@ecy.wa.gov, or [subscribe online](#).⁵

Newspaper display ads or legal notices

We announce public comment periods and events in ads or notices published in *The Seattle Times*. We will also publish notice on our [Public Input & Events Listing](#).⁶

Email lists

Ecology maintains an email list to update interested persons about this site. If you would like to be added to the email list for this site, please email Brad Petrovich at brad.petrovich@ecy.wa.gov.

Ecology's website and social media platforms

We maintain a website for the Time Oil Bulk Terminal Cleanup Site.⁷ The website provides site information, and you may download cleanup documents.

We may also share information about cleanup sites through [news releases, our ECOconnect blog, and social media](#).⁸

⁴ ecology.wa.gov/Regulations-Permits/Guidance-technical-assistance/Site-Register-lists-and-data

⁵ <http://listserv.wa.gov/cgi-bin/wa?SUBED1=siteregister&A=1>

⁶ ecology.wa.gov/Events/Search/Listing

⁷ <https://fortress.wa.gov/ecy/gsp/Sitepage.aspx?csid=14604>

⁸ ecology.wa.gov/About-us/Get-to-know-us/News

Document repositories

During public comment periods, you can find print documents at the Ecology Northwest Regional Office and physical locations close to the Site. However due to public health and safety concerns at the time of this document, Ecology cannot offer in-person review options. Please refer to the Site website, or contact Brad Petrovich at (425) 533-5537.

Signs around the cleanup site

We may also install signs displaying information about project status, traffic impacts, and health risks around the cleanup site.

How to share information with us

At minimum, MTCA requires 30-day public comment periods for certain draft cleanup documents and 14-day comment periods for SEPA documents. SEPA documents are often made available for review with other cleanup documents. We may hold comment periods longer than 30 days.

We may also identify public concerns and cleanup goals by meeting with and soliciting information from interested community members and organizations. To collaborate with us about this site, contact the cleanup site manager, Mark Adams, at 425-649-7107 or Mark.Adams@ecy.wa.gov.

Public comment periods

Formal 30-day comment periods allow interested members of the public to comment on draft documents, legal agreements, and proposed cleanup actions. If there is significant interest, Ecology may extend the public comment period. When Ecology oversees SEPA determinations, we hold comment periods for at least two weeks. In this case Ecology is not overseeing SEPA.

Following a comment period, we publish all the input we received and respond to significant comments and questions. If the comments result in significant changes to the cleanup documents, then the documents will be revised and re-issued for public review. If the comments do not result in significant changes, then they become final.

Public events

We hold public meetings, workshops, open houses, and public hearings based on community interest. If we have not scheduled a meeting during a public comment period, we will hold one if 10 people request it, and this may cause us to extend a public comment period so the meeting occurs during it.

Events are held at locations close to the site that meet Americans with Disabilities Act standards. Public meetings, workshops, open houses, and hearings are always announced in advance using a variety of methods.

Plan Amendments

Ecology developed this plan following MTCA regulations (WAC 173-340-600). We review it as the cleanup progresses and amend it as necessary. You may suggest amendments to Brad Petrovich at 425-533-5537 or brad.petrovich@ecy.wa.gov.

This plan includes information for the public regarding opportunities for public involvement and comment. The outreach activities discussed in this section reflect Ecology's current plans for keeping the public informed and providing ways for those interested in the site to communicate their concerns and questions to us.

If you feel the planned outreach activities and mechanisms described in this plan are insufficient, or should otherwise be modified, we will work to find solutions. New outreach activities or outreach tools established as a result can be implemented right away, with or without amending this plan.