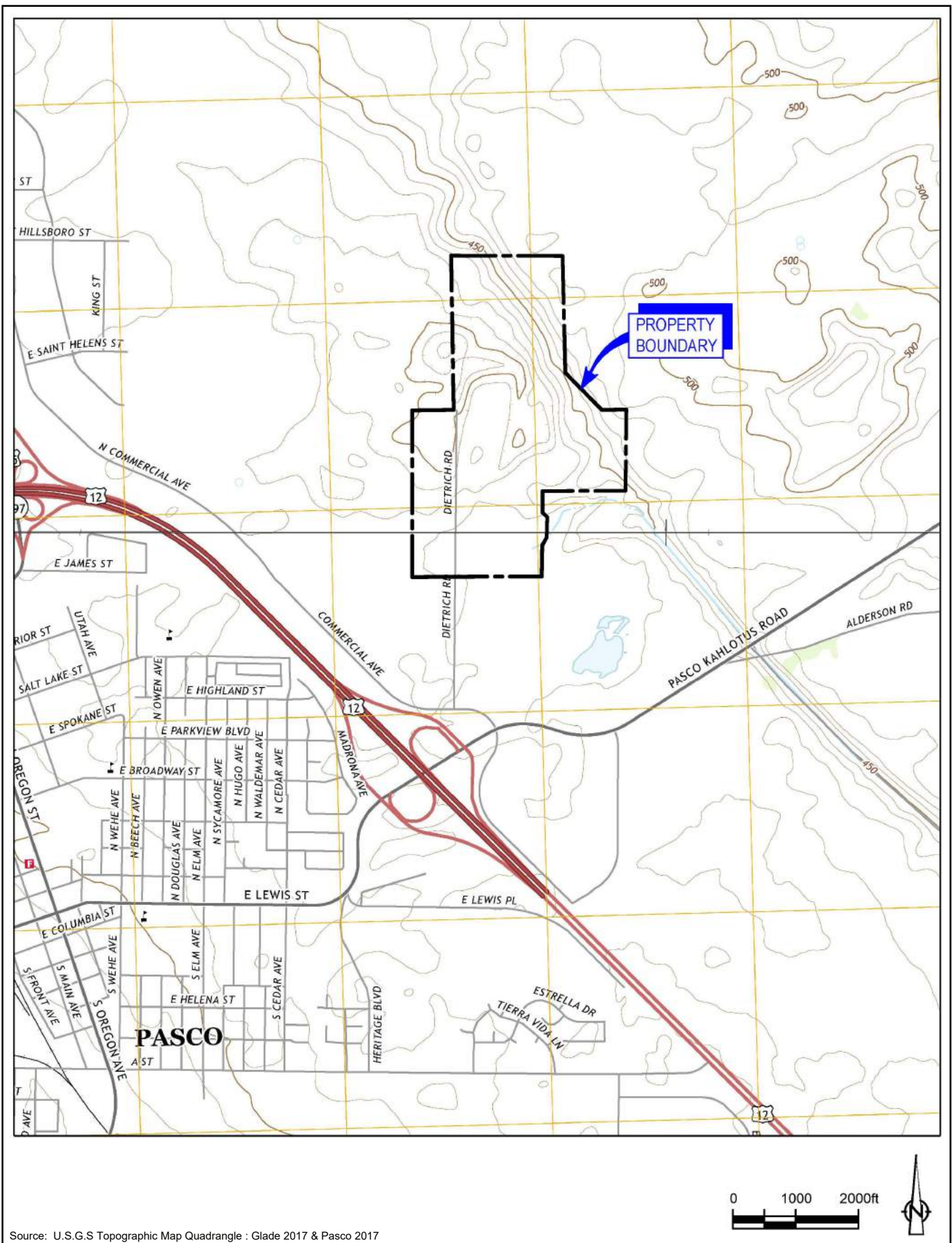


Pasco Sanitary Landfill NPL Site
Zone A Removal Action
Engineering Design Report

Figures

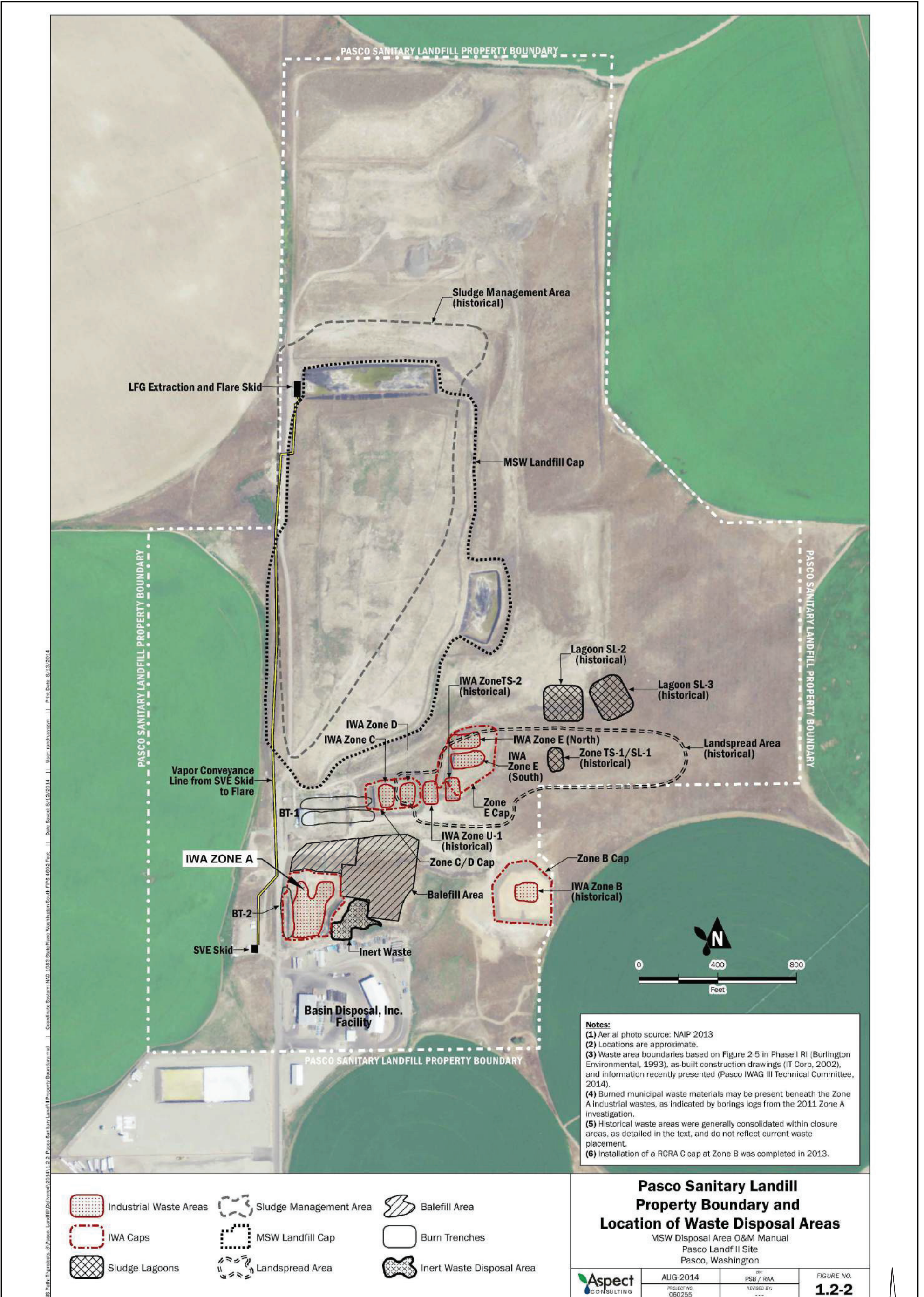
FINAL



Source: U.S.G.S Topographic Map Quadrangle : Glade 2017 & Pasco 2017

**Zone A Removal Action Engineering Design Report
 Pasco Sanitary Landfill NPL Site
 Pasco, Washington**

Figure 1.1
 Pasco Sanitary Landfill
 Property Location



Source: FIGURE 1.2-2 DRAFT FINAL FOCUSED FEASIBILITY STUDY, ANCHOR QEA, AUGUST 2017.

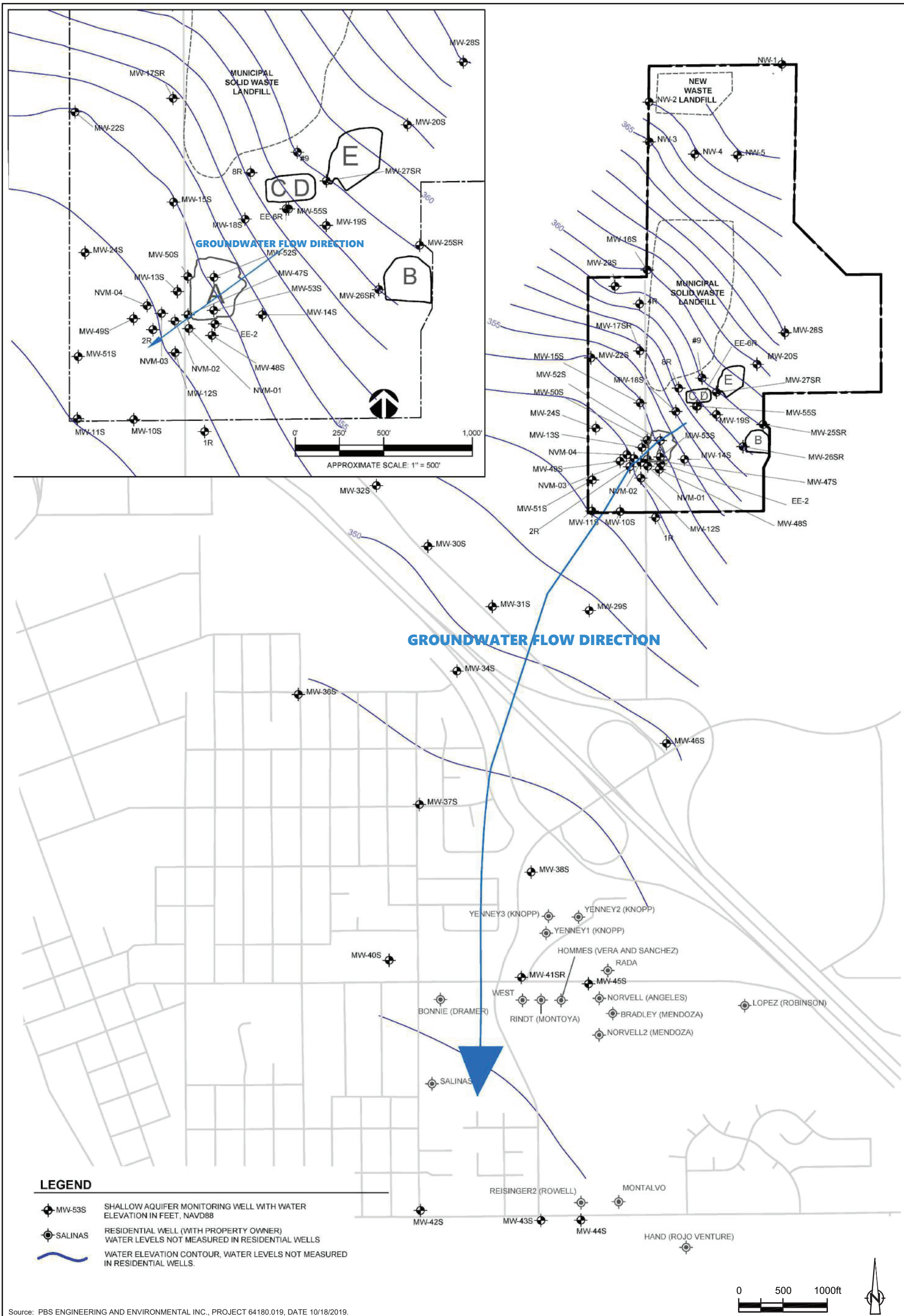
I:\GIS\Projects\IWAG-Pasco\A\IDraft EDR\Figure 1.2 Zone A Location at the Site.ai
 12/02/2019 MSW shape added by PBS 5/29/2020

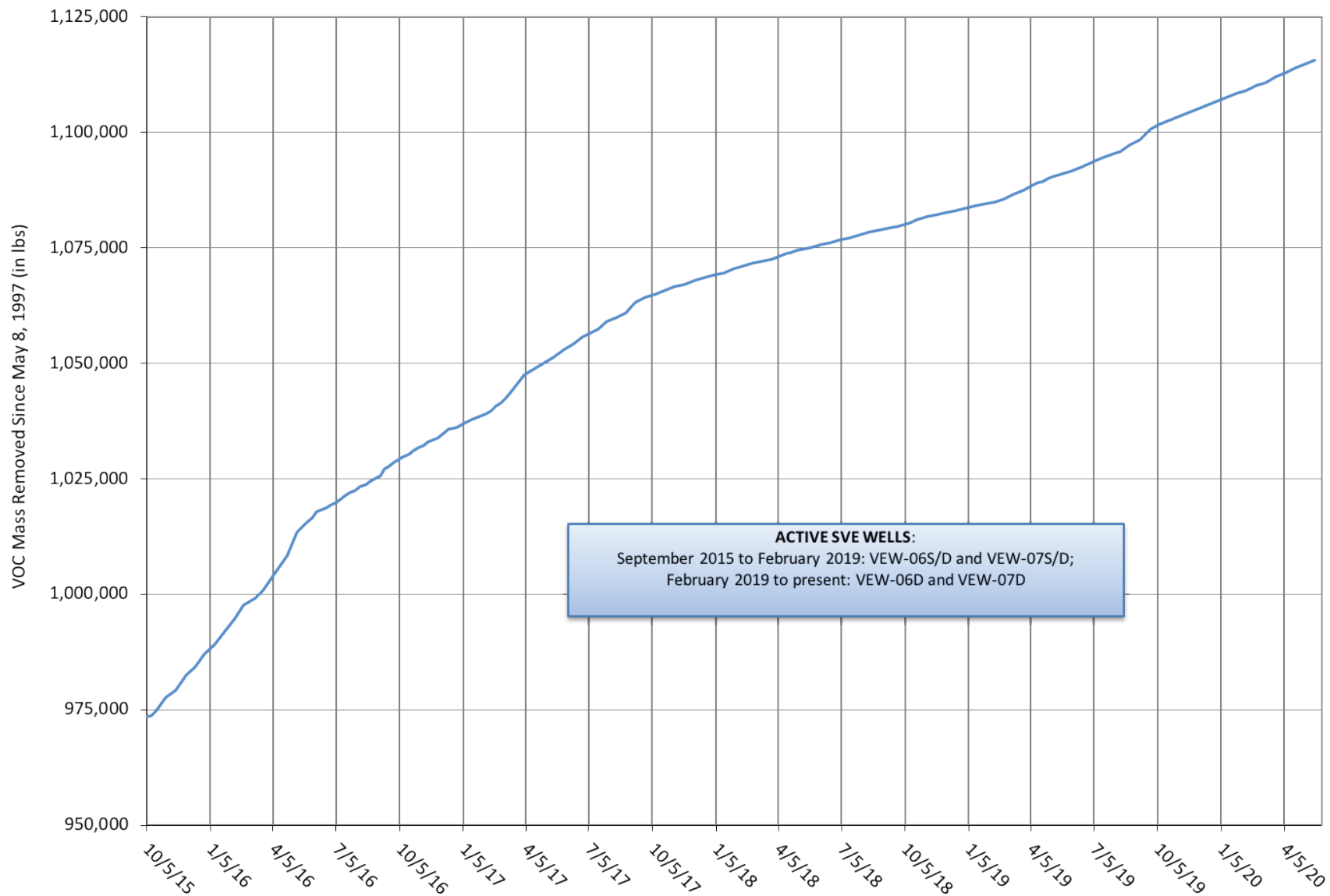


Source: Google earth Imagery, Date 7/20/2018

**Zone A Removal Action Engineering Design Report
Pasco Sanitary Landfill NPL Site
Pasco, Washington**

Figure 3.1
Groundwater Protection Areas



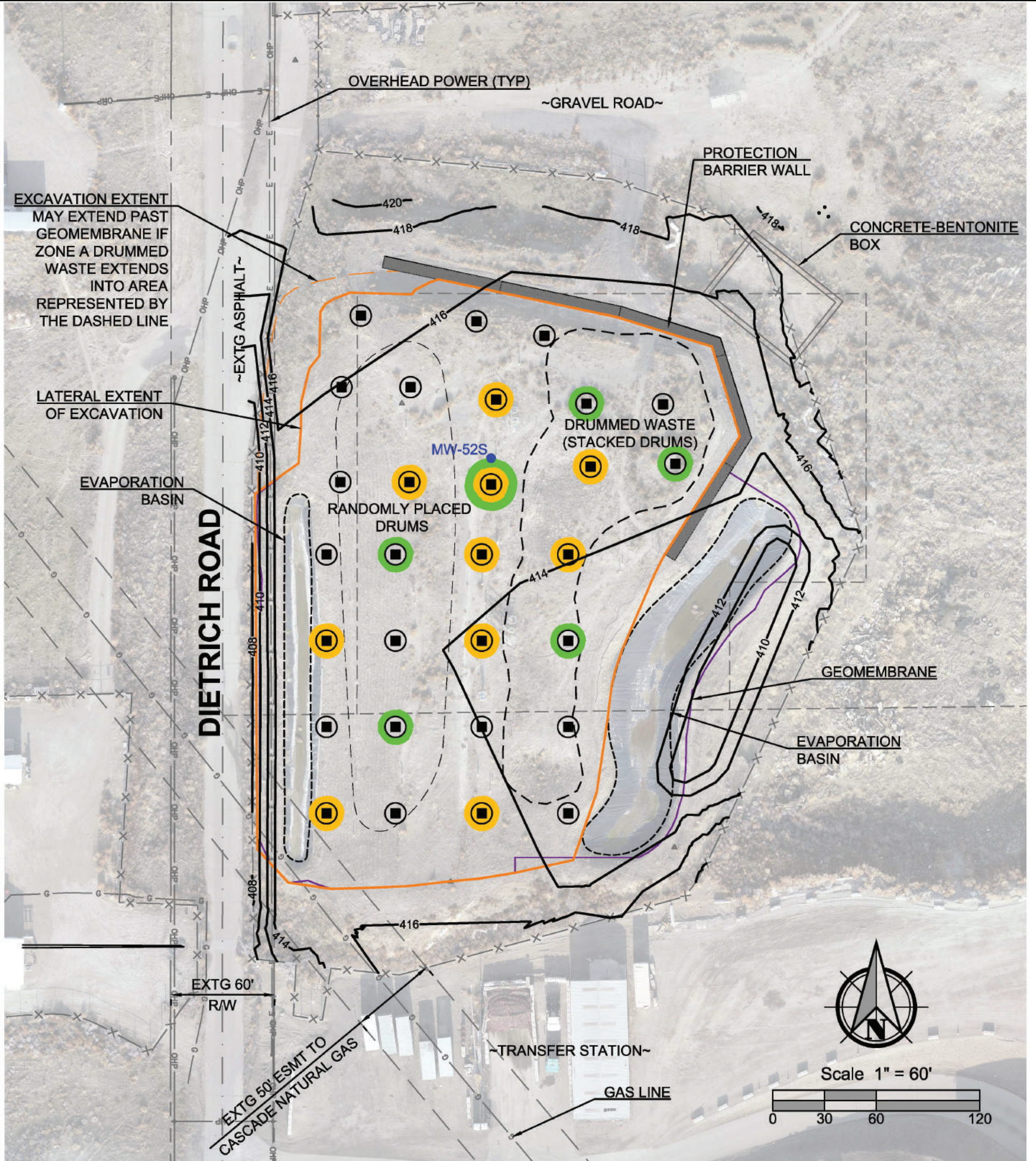


Source: PBS Engineering and Environmental Inc., Chart of Cumulative VOC Mass Removal Since May 8, 1997 from Monthly Status Report No. 122 for May 2020.

**Zone A Removal Action Engineering Design Report
 Pasco Sanitary Landfill NPL Site
 Pasco, Washington**

Figure 3.3
 Cumulative VOC Mass Removed Since
 October 2015 by Zone A SVE System

Full Size Sheet Format is 11x17, If Printed Size is Not 11x17, Then This Sheet Format Has Been Modified & Indicated Drawing Scale is Not Accurate.

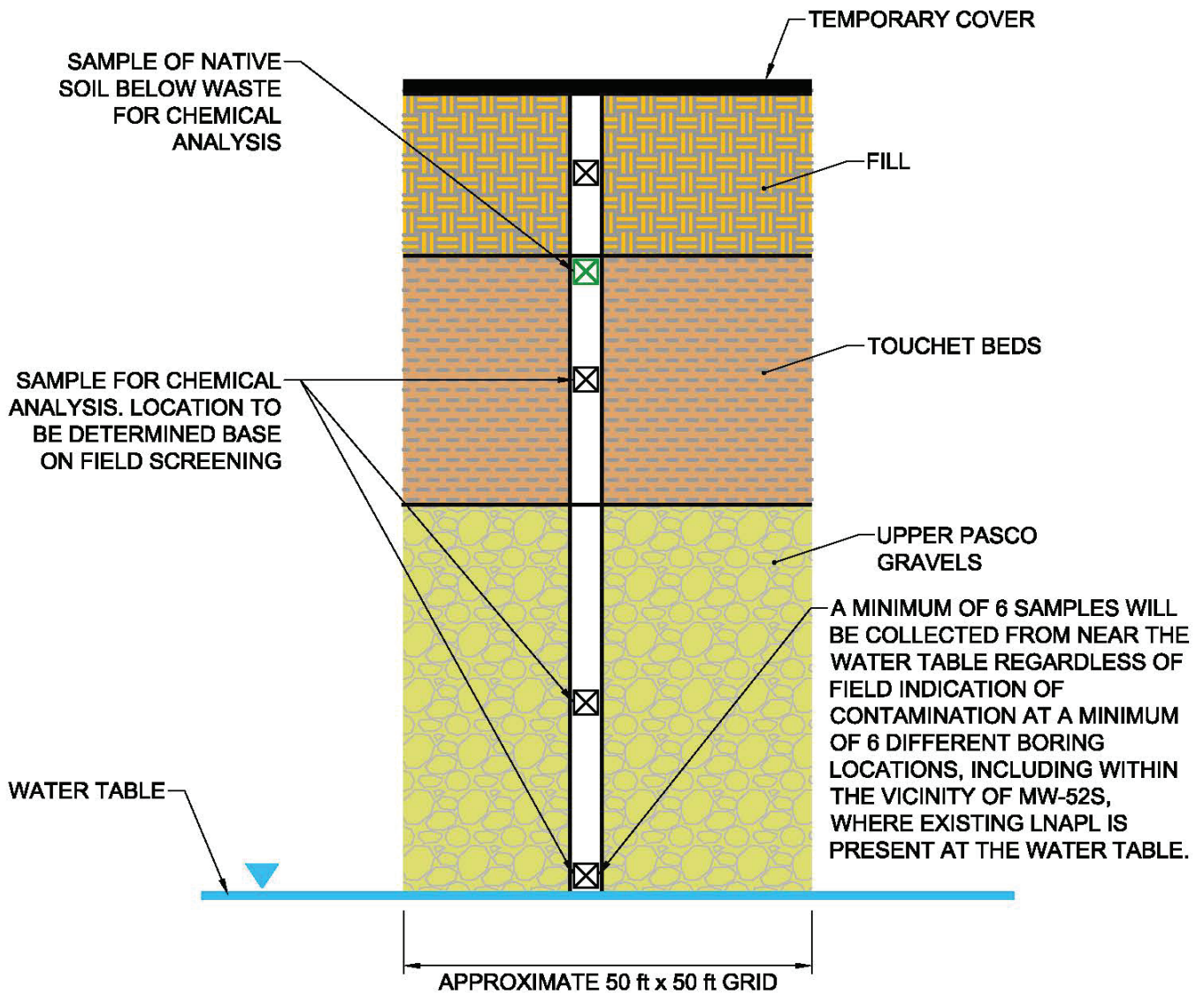


NOTES:

1. LOCATIONS ARE APPROXIMATE AND MAY NEED TO BE ADJUSTED IN THE FIELD DEPENDING ON ENCOUNTERED CONDITIONS
2. A MINIMUM OF 6 SAMPLES WILL BE COLLECTED FROM THE LOCATION SHOWN. UP TO 10 ADDITIONAL SAMPLES MAY BE COLLECTED FOR PCB, RCRA METALS, AND PESTICIDE ANALYSES FROM ADDITIONAL LOCATIONS IF NAPL IS OBSERVED.
3. A MINIMUM OF 10 SAMPLES WILL BE COLLECTED FROM THE LOCATIONS SHOWN, REGARDLESS OF FIELD INDICATIONS OF CONTAMINATION. ADDITIONAL SAMPLES MAY BE COLLECTED FROM THIS ZONE FROM OTHER BOREHOLE LOCATIONS IF EVIDENCE OF CONTAMINATION IS OBSERVED SUCH AS ELEVATED PID READINGS OR THE PRESENCE OF NAPL.
4. ADDITIONAL STEP-OUT SOIL BORINGS MAY BE ADVANCED AS NECESSARY TO DEFINE THE LATERAL EXTENTS OF CONTAMINATION BASED ON FIELD OBSERVATIONS.

LEGEND

- X — EXISTING FENCE
- G — EXISTING GAS LINE
- - - - - EVAPORATION BASIN
- xxx — PROPOSED CONTOUR
- GROUNDWATER MONITORING WELL TO BE ABANDONED
- ⊠ PROPOSED BOREHOLE
- ADDITIONAL SOIL SAMPLE FOR PCB, RCRA METALS, AND PESTICIDE ANALYSIS TO BE COLLECTED FROM DEPTH INTERVAL WITH GREATEST FIELD EVIDENCE OF CONTAMINATION. (SEE NOTE 2).
- ADDITIONAL SOIL SAMPLE TO BE COLLECTED AT THE WATER TABLE. (SEE NOTE 3).

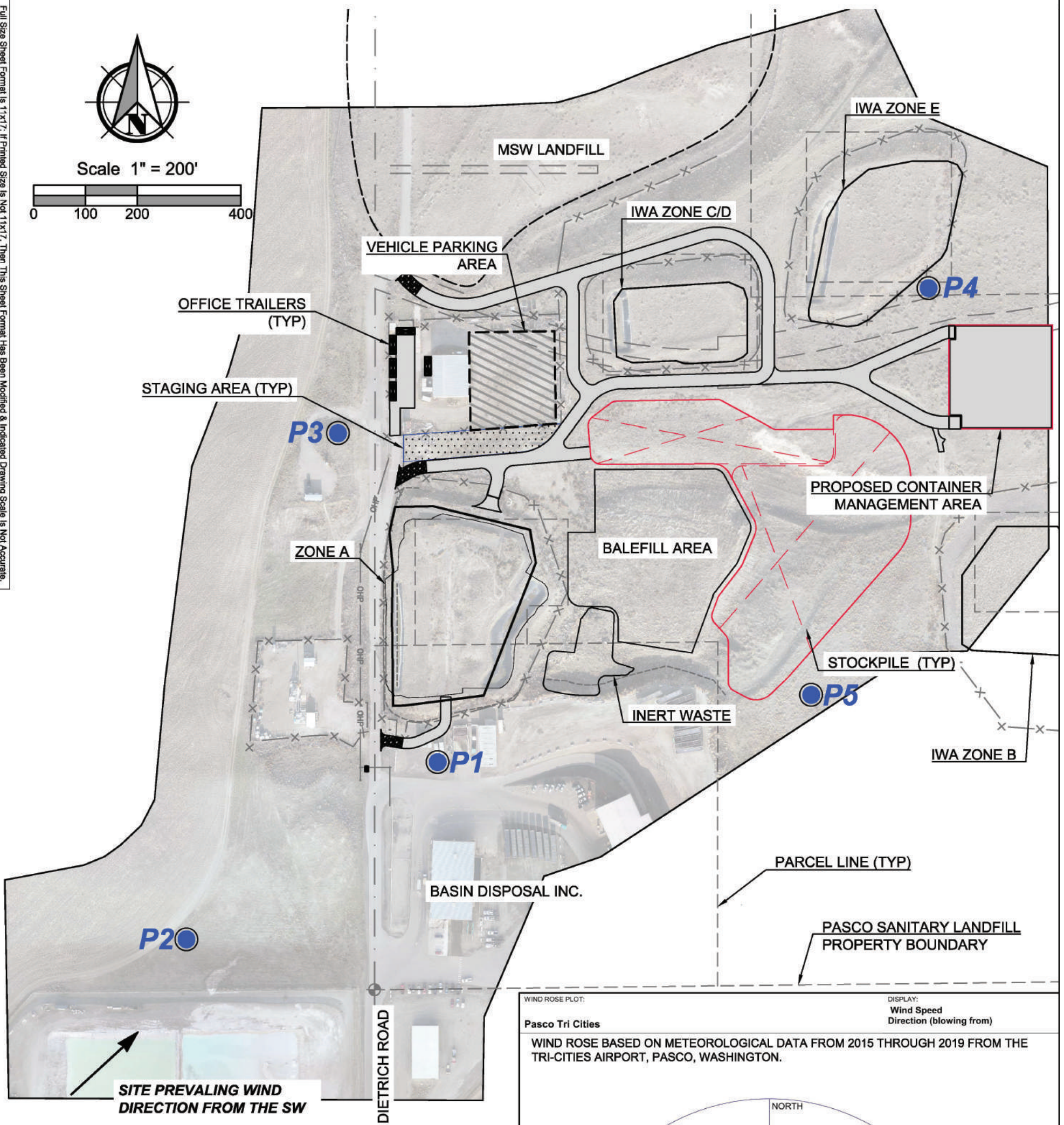
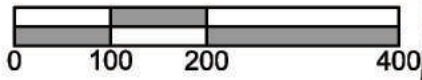


NOT TO SCALE

Full Size Sheet Format is 11x17. If Printed Size is Not 11x17, Then This Sheet Format Has Been Modified & Indicated Drawing Scale is Not Accurate.

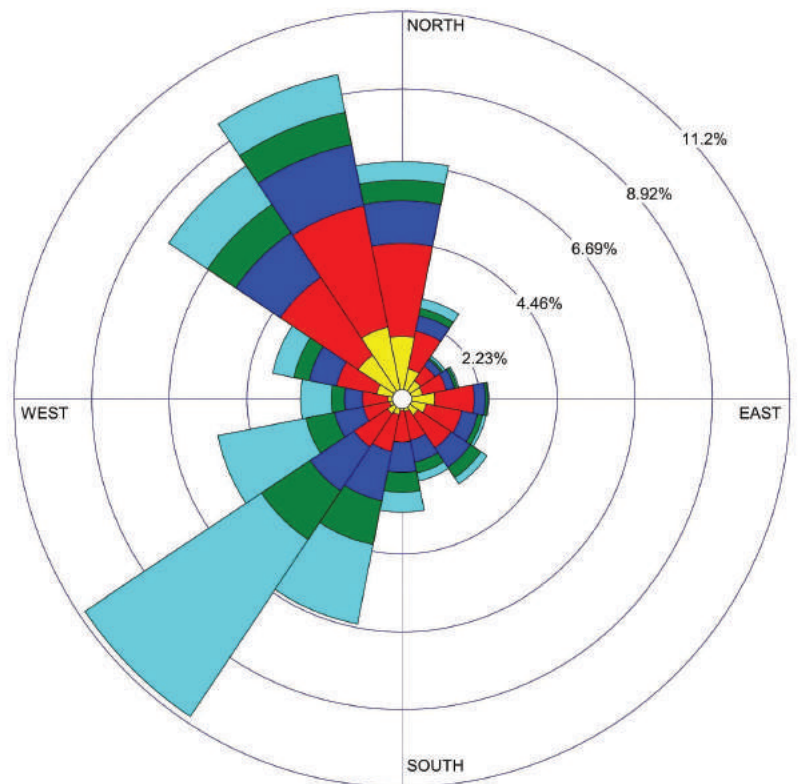


Scale 1" = 200'



WIND ROSE PLOT:
 Pasco Tri Cities
 WIND ROSE BASED ON METEOROLOGICAL DATA FROM 2015 THROUGH 2019 FROM THE TRI-CITIES AIRPORT, PASCO, WASHINGTON.

DISPLAY:
 Wind Speed
 Direction (blowing from)



WIND SPEED (m/s)
 >= 5.00
 4.00 - 5.00
 3.00 - 4.00
 2.00 - 3.00
 1.00 - 2.00
 0.50 - 1.00
 Calms: 26.40%

LEGEND

- PROPOSED AIR MONITORING STATIONS APPROXIMATE LOCATION. (TO BE CONFIRMED IN FIELD)
- PROPOSED STOCKPILE
- PROPOSED STAGING AREA
- PROPOSED CONTAINER MANAGEMENT AREA