

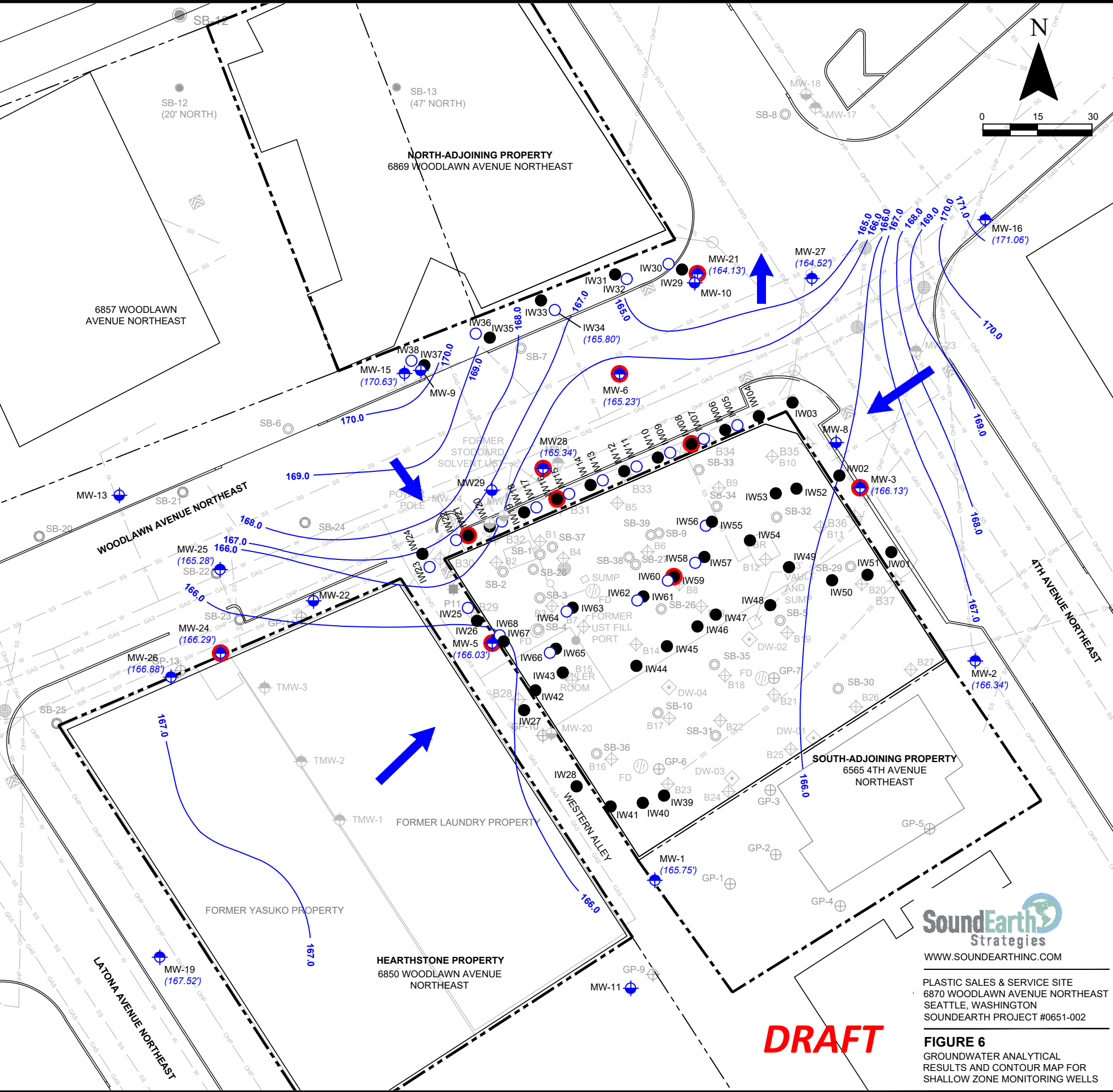
LEGEND

- CATCH BASIN
- MANHOLE
- SHALLOW-ZONE MONITORING WELL
- DEEP-ZONE MONITORING WELL
- DEEP DEWATERING WELL
- SHALLOW INJECTION WELL
- DEEP INJECTION WELL
- APPROXIMATE DIRECTION OF GROUNDWATER FLOW (SHALLOW ZONE)
- SHALLOW ZONE POTENTIOMETRIC SURFACE CONTOUR (OCTOBER 19-20, 2020)
- GROUNDWATER ELEVATION
- DECOMMISSIONED WELL
- DIRECT-PUSH BORING (GEOENGINEERS 2002/2003)
- DIRECT-PUSH BORING (GEOENGINEERS 2004)
- DIRECT-PUSH BORING (FARALLON 2004)
- DIRECT-PUSH BORING (FARALLON 2006/2007)
- DIRECT-PUSH BORING (FARALLON 2010)
- DIRECT-PUSH BORING (SOUNDEARTH 2008)
- HOLLOW-STEM AUGER (SOUNDEARTH 2009)
- POST-ELECTRICAL RESISTANCE HEATING BORING LOCATION
- STORMWATER LINE
- GAS LINE
- SANITARY SEWER LINE
- WATER LINE
- OVERHEAD POWER LINE
- PROPERTY BOUNDARY LINE
- PARCEL BOUNDARY
- FD FLOOR DRAIN
- DECOM DECOMMISSIONED WELL
- bgs BELOW GROUND SURFACE
- DCE DICHOROETHENE
- PCE TETRACHOROETHENE
- TCE TRICHLOROETHENE
- UST UNDERGROUND STORAGE TANK
- MTCA WASHINGTON STATE MODEL TOXICS CONTROL ACT
- RED DENOTES CONCENTRATION EXCEEDS MTCA METHOD A OR B CLEANUP LEVEL
- * DENOTES SAMPLE WAS COLLECTED USING A PASSIVE MEMBRANE SAMPLER

NOTES:

1. FIGURE DERIVED FROM BASEMAP BY FARALLON CONSULTING, 2010.
2. HISTORICAL DATA FOR DECOMMISSIONED MONITORING WELLS IS NOT INCLUDED. PLEASE SEE FULL DATA TABLES FOR DECOMMISSIONED MONITORING WELL DATA.

Well ID	Sample Date	Analytical Results (micrograms per liter)				VWF Chloride		
		PCE	TCE	Trans-1,2-DCE	1,1-DCE			
Shallow Zone Wells								
MW01	10/30/03	< 2.0	< 2.0	< 2.0	< 2.0	< 2.0		
	06/02/06	1.1	< 0.20	< 0.20	< 0.20	< 0.20		
	11/20/08	1.5	< 0.20	< 0.20	< 0.20	< 0.20		
	05/04/10	1.8	< 0.20	< 0.20	< 0.20	< 0.20		
	09/10/14	1.6	< 0.20	< 0.20	< 0.20	< 0.20		
	09/10/14	0.85	< 0.20	< 0.20	< 0.20	< 0.20		
	01/29/20	1.8	< 0.20	< 0.20	< 0.20	< 0.20		
	04/21/20	1.0	< 0.20	< 0.20	< 0.20	< 0.20		
	07/21/20	1.3	< 0.20	< 0.20	< 0.20	< 0.20		
	10/20/20	2.1	< 0.20	< 0.20	< 0.20	< 0.20		
MW02	10/30/03	< 2.0	< 2.0	< 2.0	< 2.0	< 2.0		
	06/02/06	< 0.20	3.5	< 0.20	< 0.20	< 0.20		
	11/20/08	6.8	4.6	< 0.20	< 0.20	< 0.20		
	05/04/10	8.5	3.5	< 0.20	< 0.20	< 0.20		
	09/10/14	4.0	0.49	< 0.20	< 0.20	< 0.20		
	09/10/14	1.7	0.61	< 0.20	< 0.20	< 0.20		
	01/29/20	1.1	0.80	< 0.20	< 0.20	< 0.20		
	04/21/20	1.3	0.53	< 0.20	< 0.20	< 0.20		
	07/21/20	2.0	1.1	< 0.20	< 0.20	< 0.20		
	10/20/20	2.7	1.2	< 0.20	< 0.20	< 0.20		
MW03	10/30/03	190	< 2.0	< 2.0	< 2.0	< 2.0		
	06/02/06	150	1.1	< 1.0	< 1.0	< 1.0		
	11/20/08	230	1.6	2.0	< 1.0	< 1.0		
	05/04/10	150	< 1.0	< 1.0	< 1.0	< 1.0		
	09/10/14	64	0.38	0.79	< 0.20	< 0.20		
	09/10/14	54	0.61	< 0.40	< 0.40	< 0.40		
	01/29/20	< 0.40	< 0.40	44	0.57	< 16		
	02/12/20	< 0.40	2.6	30	0.62	< 15		
	04/21/20	< 0.20	0.20	6.3	0.55	< 74		
	07/20/20	< 0.20	0.36	13	0.65	< 13		
MW05	10/30/03	270	46	< 2.0	< 2.0	< 2.0		
	06/02/06	34	3.6	3.3	< 0.40	< 0.40		
	09/28/08	19	110	40	< 1.0	< 2.0		
	11/20/08	86	87	37	1.4	< 5.5		
	05/04/10	82	34	27	0.44	< 0.88		
	09/11/14	71	22	3.6	0.27	< 0.20		
	09/27/19	36	7.6	1.7	< 0.20	< 0.20		
	01/28/20	3.4	1.4	130	< 1.0	< 10		
	02/12/20	1.1	1.1	130	< 1.0	< 10		
	04/21/20	2.3	1.2	170	1.3	< 29		
MW06	10/30/03	1100	330	440	< 2.0	< 110		
	09/10/14	10000	450	220	< 50	< 72		
	09/27/19	1400	110	600	< 2.0	< 18		
	01/28/20	38	130	210	< 0.20	< 26		
	04/21/20	1.2	8.7	42	0.89	< 26		
	07/21/20	0.95	10	29	0.81	< 29		
	10/20/20	1.7	19	69	0.90	< 36		
	06/01/06	0.22	< 0.20	< 0.20	< 0.20	< 0.20		
	11/20/08	0.26	< 0.20	< 0.20	< 0.20	< 0.20		
	05/04/10	< 1.0	< 0.20	< 0.20	< 0.20	< 0.20		
MW15	10/30/03	< 0.20	< 0.20	< 0.20	< 0.20	< 0.20		
	09/10/14	< 0.20	< 0.20	< 0.20	< 0.20	< 0.20		
	10/22/18	0.78	< 0.20	< 0.20	< 0.20	< 0.20		
	01/28/20	< 0.20	< 0.20	< 0.20	< 0.20	< 0.20		
	04/21/20	< 0.20	< 0.20	< 0.20	< 0.20	< 0.20		
	07/21/20	< 0.20	< 0.20	< 0.20	< 0.20	< 0.20		
	10/20/20	< 0.20	< 0.20	< 0.20	< 0.20	< 0.20		
	06/01/06	< 0.20	< 0.20	< 0.20	< 0.20	< 0.20		
	11/20/08	< 0.20	< 0.20	< 0.20	< 0.20	< 0.20		
	05/05/10	< 1.0	< 0.20	< 0.20	< 0.20	< 0.20		
MW16	10/30/03	< 0.20	< 0.20	< 0.20	< 0.20	< 0.20		
	09/10/14	< 0.20	< 0.20	< 0.20	< 0.20	< 0.20		
	10/22/18	< 0.20	< 0.20	< 0.20	< 0.20	< 0.20		
	09/28/08	< 1.0	< 1.0	< 1.0	< 1.0	< 0.20		
	06/05/10	< 1.00	< 0.20	< 0.20	< 0.20	< 0.20		
	09/10/14	< 0.20	< 0.20	< 0.20	< 0.20	< 0.20		
	10/22/18	< 0.20	< 0.20	< 0.20	< 0.20	< 0.20		
	09/24/18	< 0.20	< 0.20	< 0.20	< 0.20	< 0.20		
	11/20/08	< 0.20	< 0.20	< 0.20	< 0.20	< 0.20		
	05/04/10	< 1.0	< 0.20	< 0.20	< 0.20	< 0.20		
MW19	10/30/03	< 0.20	< 0.20	< 0.20	< 0.20	< 0.20		
	06/02/06	< 0.20	< 0.20	< 0.20	< 0.20	< 0.20		
	11/20/08	< 0.20	< 0.20	< 0.20	< 0.20	< 0.20		
	05/04/10	< 1.0	< 0.20	< 0.20	< 0.20	< 0.20		
	09/10/14	< 0.20	< 0.20	< 0.20	< 0.20	< 0.20		
	10/22/18	0.20	< 0.20	1.7	< 0.20	0.79		
	01/29/20	0.67	< 0.20	8.0	< 0.20	1.9		
	04/21/20	< 0.20	< 0.20	3.9	< 0.20	3.0		
	07/21/20	< 0.20	< 0.20	4.4	< 0.20	2.3		
	10/20/20	0.23	< 0.20	5.6	< 0.20	4.5		
MW21	10/30/03	650	< 10	< 10	< 10	< 2.0		
	06/02/06	360	3.4	< 2.0	< 2.0	< 2.0		
	09/10/14	290	< 10	< 10	< 10	< 2.0		
	05/05/10	40	0.42	< 0.20	< 0.20	< 0.20		
	09/10/14	17	0.27	< 0.20	< 0.20	< 0.20		
	10/24/18	20	0.24	< 0.20	< 0.20	< 0.20		
	01/29/20	1.2	< 0.20	2.4	< 0.20	< 0.20		
	04/21/20	1.3	< 0.20	2.7	< 0.20	< 0.20		
	07/21/20	1.1	< 0.20	6.0	< 0.20	< 0.20		
	10/20/20	0.92	< 0.20	8.6	< 0.20	< 0.43		
MW24	10/30/03	14	0.31	1.1	< 0.20	< 0.20		
	10/07/14	12	0.36	0.37	< 0.20	< 0.20		
	10/25/18	0.28	< 0.20	0.75	< 0.20	< 0.20		
	04/21/20	< 0.20	< 0.20	< 0.20	< 0.20	< 0.20		
	07/21/20	< 0.20	< 0.20	< 0.20	< 0.20	< 0.20		
	10/20/20	0.20	0.50	0.45	< 0.20	< 0.20		
	10/20/20	1.6	0.59	1.4	< 0.20	< 0.20		
	05/04/10	< 1.0	< 0.20	< 0.20	< 0.20	< 0.20		
	09/10/14	< 0.20	< 0.20	< 0.20	< 0.20	< 0.20		
	10/22/18	0.24	< 0.20	< 0.20	< 0.20	< 0.20		
MW25	10/30/03	190	190	710	6.3	< 180		
	07/21/20	21	18	200	1.7	< 60		
	10/20/20	16	13	170	1.3	< 50		
	02/12/20	1.0	0.32	12	< 0.20	< 0.30		
	05/26/20	1.2	0.32	12	< 0.20	< 0.20		
	07/20/20	0.77	0.48	14	< 0.20	< 0.20		
	10/19/20	1.2	0.44	17	< 0.20	< 1.2		
	02/12/20	< 1.0	1.2	37	< 1.0	< 180		
	06/26/20	< 1.0	1.5	36	< 1.0	< 150		
	07/20/20	0.71	1.4	33	< 0.50	< 150		
MW26	10/30/03	0.81	1.2	24	< 0.40	< 75		
	02/12/20	< 1.0	< 1.0	81	< 1.0	< 1500		
	05/26/20	< 2.0	< 2.0	< 2.0	< 2.0	< 2.0		
	07/20/20	< 2.0	< 2.0	6.7	< 2.0	< 400		
	10/19/20	< 4.0	< 4.0	< 4.0	< 4.0	< 740		
	02/12/20	0.36	< 0.20	< 0.20	< 0.20	< 0.20		
	05/26/20	0.23	< 0.20	< 0.20	< 0.20	< 0.20		
	07/20/20	0.28	< 0.20	< 0.20	< 0.20	< 0.20		
	10/19/20	0.35	< 0.20	< 0.20	< 0.20	< 0.20		
	03/12/19	6.3	< 1.0	< 1.0	< 1.0	< 0.20		
MW27	10/30/03	1.1	< 0.20	< 0.20	< 0.20	< 0.20		
	05/26/20	1.1	< 0.20	< 0.20	< 0.20	< 0.20		
	07/20/20	1.2	< 0.20	< 0.20	< 0.20	< 0.20		
	10/19/20	1.0	< 0.20	< 0.20	< 0.20	< 0.20		
	02/12/20	< 0.20	0.55	1.0	< 0.20	< 0.24		
	05/26/20	< 0.20	0.51	1.4	< 0.20	< 0.40		
	07/20/20	0.22	1.8	5.0	< 0.20	< 1.5		
	10/19/20	0.22	1.8	5.0	< 0.20	< 1.5		
	MTCA Cleanup Levels for Groundwater		5	5	16	160	400	0.2



SoundEarth Strategies
 WWW.SOUNDEARTHINC.COM

PLASTIC SALES & SERVICE SITE
 6870 WOODLAWN AVENUE NORTHEAST
 SEATTLE, WASHINGTON
 SOUNDEARTH PROJECT #0651-002

FIGURE 6
 GROUNDWATER ANALYTICAL RESULTS AND CONTOUR MAP FOR SHALLOW ZONE MONITORING WELLS